

SPEED READ

- Loads on wheels decreased overnight, marking reduced CP volumes offset by a rise in CN volumes. On a net basis, volumes decreased due to reduced traffic in the Vancouver offset by higher traffic in the Thunder Bay, Prince Rupert, E. Canada and USA/MEX corridors.
- Network fluidity improved overnight, led by a decline in idle car counts on both CN and CP by 22% (-200) and 17% (-145), respectively. The total count of cars for 4+ days on both railways fell 6% (-46) overnight - presently at 665 cars.
- Week 35 unloads concluded ahead of prior week's performance by 100 unloads, reflecting improved week over week performance at Vancouver and Thunder Bay offset by reduced unloads at Prince Rupert.

Loads on Wheels

- Loads on wheels fell marginally (-10) overnight, due to reduced volumes on CP offset by higher traffic on CN - combined total at 9,543 and 10% below the trailing 30-day average.
- On a net basis, the decline in loads on wheels indicates reduced traffic in the Vancouver offset by higher traffic in the Thunder Bay, Prince Rupert, E. Canada and USA/MEX corridors.
- CN volumes increased significantly by 10% (+496) overnight, with higher traffic across all corridors - Vancouver, Thunder Bay, Prince Rupert, USA/MEX and E. Canada. System wide CN loads on wheels now at 5,342 and 7% below the trailing 30-day average.
- CP volumes decreased significantly by 12% (-510) overnight, driven by a decline in volumes across all corridors - Vancouver, Thunder Bay, USA/MEX and E. Canada. CP system wide loads on wheels now at 3,786 and 15% below the trailing 30-day average.
- Vancouver now at 5,156, decreased slightly by 1% (-64) overnight, now 15% below the trailing 30-day average.
- The Prince Rupert pipeline now at 1,396, gained for the third consecutive day, up 1% (+13) overnight, and 19% below the trailing 30-day average.
- Thunder Bay volumes increased for the fourth consecutive day, up 3% (+26) overnight - presently at 891, the highest seen in the last 30 days, and 173% above the trailing 30-day average, with 36% of traffic moving on CP.

Hopper Car Rationing

- CN rationed 894 hopper cars in week 34.

Loads Not Moving

- **The count of cars not moving for 48+ hours fell 20% (-345) overnight, reflecting reduced counts on both CN and CP. Idle car counts now at 1,408, the lowest seen in the last 30 days, and 54% below the trailing 30-day average.**
- CN
 - **The count of idle cars for 48+ hours decreased 22% (-200) overnight - now at 723 cars, the lowest seen in the last 30 days.**
 - The number of cars idle for 4+ days gained 4% (+14) overnight - now at 370 cars.
 - The count of cars not moving for 7+ days decreased significantly by 60% (-105) overnight - presently at 69 cars, the lowest seen in the last 30 days.
 - Vancouver represents 22% of all idle cars.
 - In total 41% of all idle cars are dwelling at origin locations.
- CP
 - **CP idle car counts for 48+ hours decreased 17% (-145) overnight - now at 685 cars.**
 - The number of cars idle for 4+ days decreased 17% (-59) overnight - now at 295 cars.

- The number of cars idle for 7+ days decreased 3% (-3) overnight - presently at 106 cars.
- Vancouver accounts for 47% of all idle cars.
- In total 43% of all idle cars are dwelling at origin locations.

Port Performance

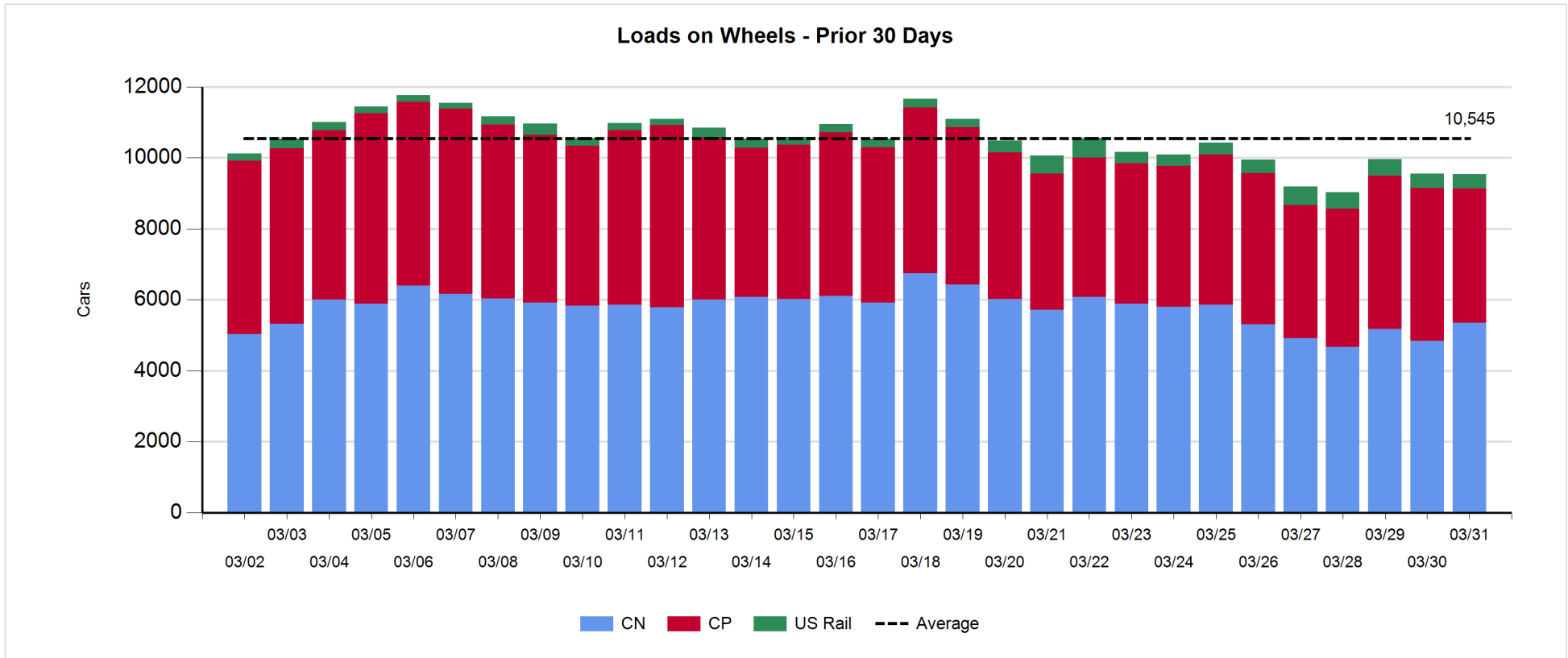
- CN and CP reported a total of 823 cars unloaded at the three major ports, now 1% below the trailing 30-day average. Week 35 unloads concluded ahead of last week's pace by 100 unloads, reflecting higher unloads at Vancouver and Thunder Bay offset by reduced unloads at Prince Rupert.
- Vancouver
 - 659 unloads reported by CN and CP at the Port of Vancouver; CN - 276 and CP - 383. Week 35 unloads concluded ahead of last week's performance by more than 400 unloads.
 - There are 1,300 cars on site at Vancouver with 700 cars arriving at the port in the last 24 hours.
 - CN and CP have 1,100 cars in British Columbia en route to Vancouver, with more than 450 cars at Kamloops and west, and 62% of traffic moving on CP.
- Prince Rupert
 - Prince Rupert reported 74 unloads, concluded behind last week's unloads by 350 unloads.
 - Loads on wheels now above 1,000 cars - now at 1,396 cars.
 - There are more than 650 cars west of Jasper en route to Prince Rupert.
 - There are 200 cars on site at Prince Rupert with 100 cars arriving at the port in the last 24 hours.
- Thunder Bay
 - 90 unloads were reported at Thunder Bay yesterday. Week 35 unloads ended ahead of last week's pace by 14 unloads.
 - There are 450 cars on site at Thunder Bay with more than 300 cars arriving at the port in the prior 24 hours.
 - There are 2 cars en route to Thunder Bay from Winnipeg and east.

Daily Loads on Wheels - 3/31/2019

	E Canada	Prince Rupert	Thunder Bay	USA/MEX	Vancouver	Total
CN	654	1,396	572	269	2,451	5,342
CP	435		319	378	2,654	3,786
Short Line	41				51	92
US Rail				323		323
	1,130	1,396	891	970	5,156	9,543

Change in Loads on Wheels - Prior 24 Hours

	E Canada	Prince Rupert	Thunder Bay	USA/MEX	Vancouver	Total
CN	13	14	116	45	308	496
CP	-2	-1	-90	-40	-377	-510
Short Line	2				5	7
US Rail				-3		-3
	13	13	26	2	-64	-10

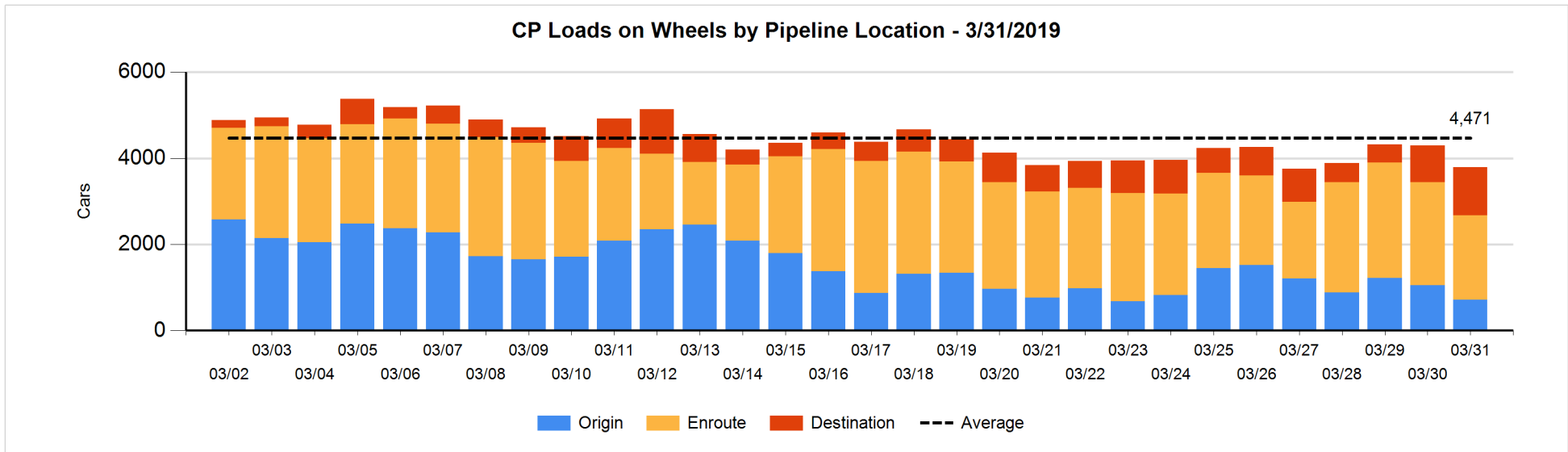
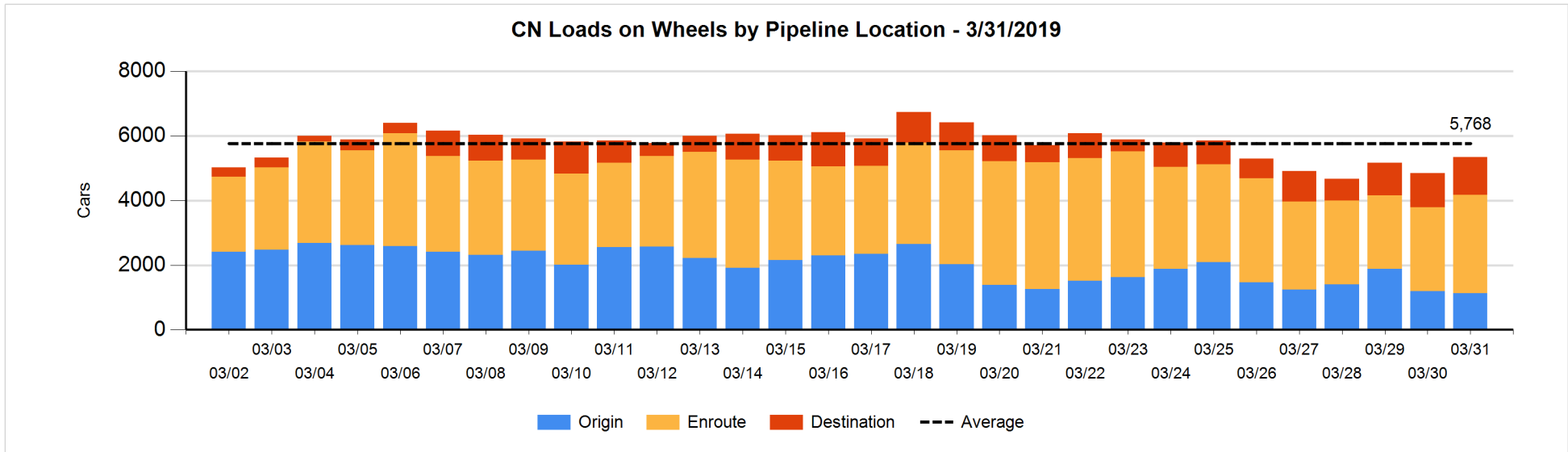


Daily Loads on Wheels By Pipeline Location - 3/31/2019

	E Canada	Prince Rupert	Thunder Bay	USA/MEX	Vancouver	Total
CN						
Origin	50	217	215	50	603	1,135
Enroute	372	972	167	154	1,378	3,043
Destination	232	207	190	65	470	1,164
	654	1,396	572	269	2,451	5,342
CP						
Origin	232		67	1	413	713
Enroute	201		1	303	1,457	1,962
Destination	2		251	74	784	1,111
	435		319	378	2,654	3,786
US Rail / Short Line						
Origin						
Enroute	2			276		278
Destination	39			47	51	137
	41			323	51	415

Change in Daily Loads on Wheels By Pipeline Location - Prior 24 Hours

	E Canada	Prince Rupert	Thunder Bay	USA/MEX	Vancouver	Total
CN						
Origin	50	-118	116	36	-136	-52
Enroute	-19	99	-85	-48	490	437
Destination	-18	33	85	57	-46	111
	13	14	116	45	308	496
CP						
Origin	0		0	0	-340	-340
Enroute	-2		-240	-70	-115	-427
Destination	0	-1	150	30	78	257
	-2	-1	-90	-40	-377	-510
US Rail / Short Line						
Origin						
Enroute	2			1		3
Destination	0			-4	5	1
	2			-3	5	4

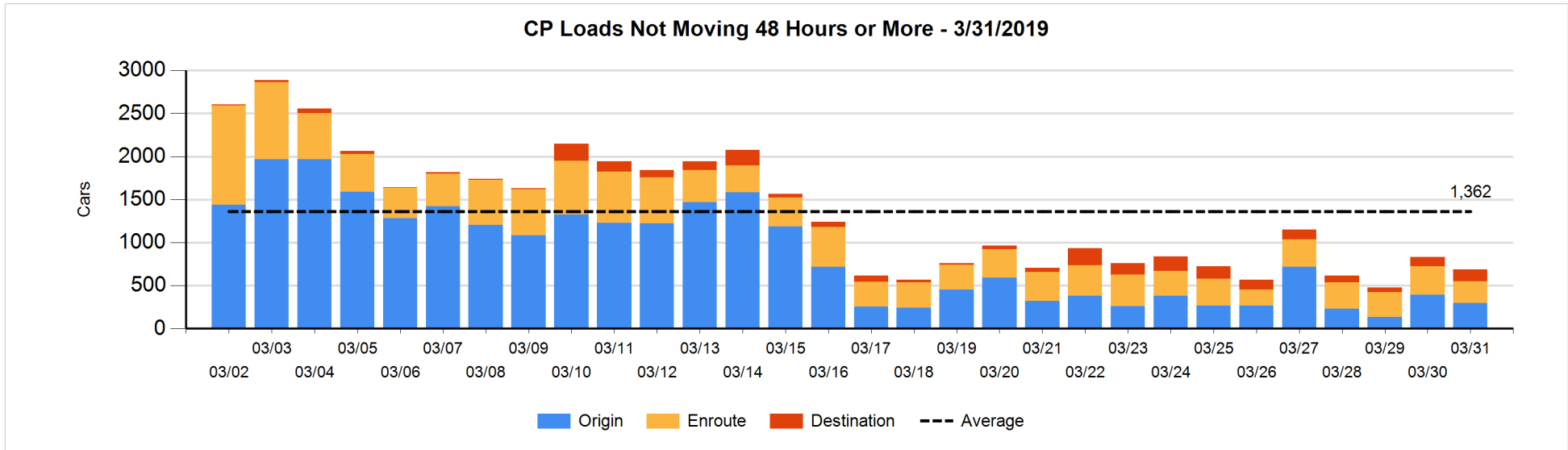
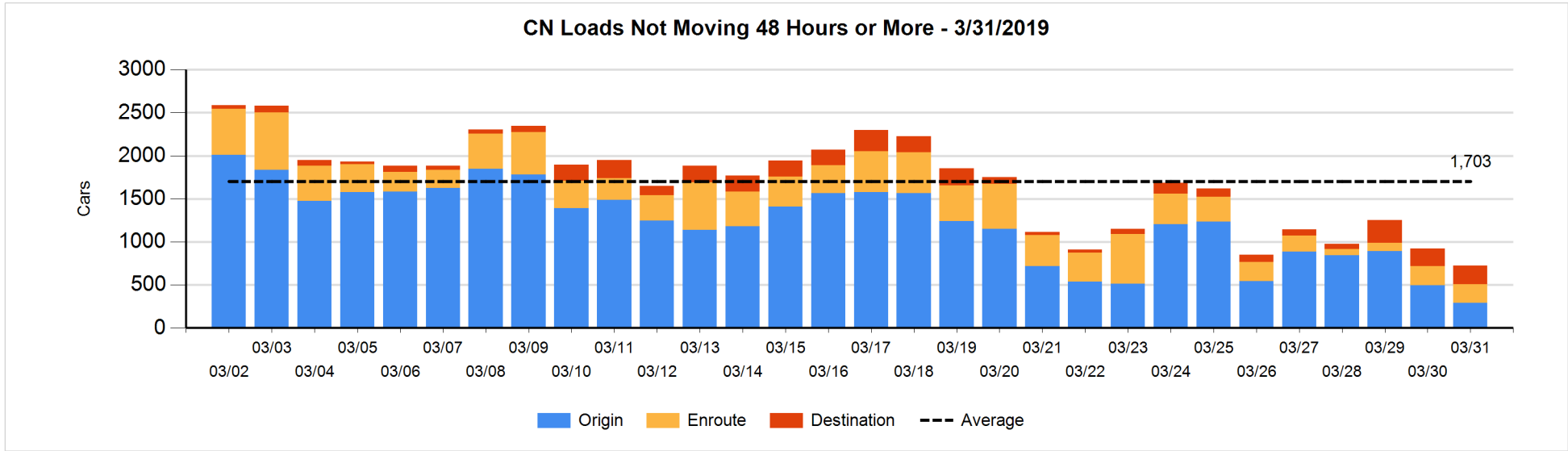


Loads Not Moving 48 Hours or More - 3/31/2019

	E Canada	Prince Rupert	Thunder Bay	USA/MEX	Vancouver	Total
CN						
Origin		77	99		117	293
Enroute	190	12		2	10	214
Destination	73	103	3	8	29	216
	263	192	102	10	156	723
CP						
Origin	132		67	1	97	297
Enroute	49		1	104	99	253
Destination	1		11		123	135
	182		79	105	319	685
US Rail / Short Line						
Origin						
Enroute				25		25
Destination	39			39	40	118
	39			64	40	143

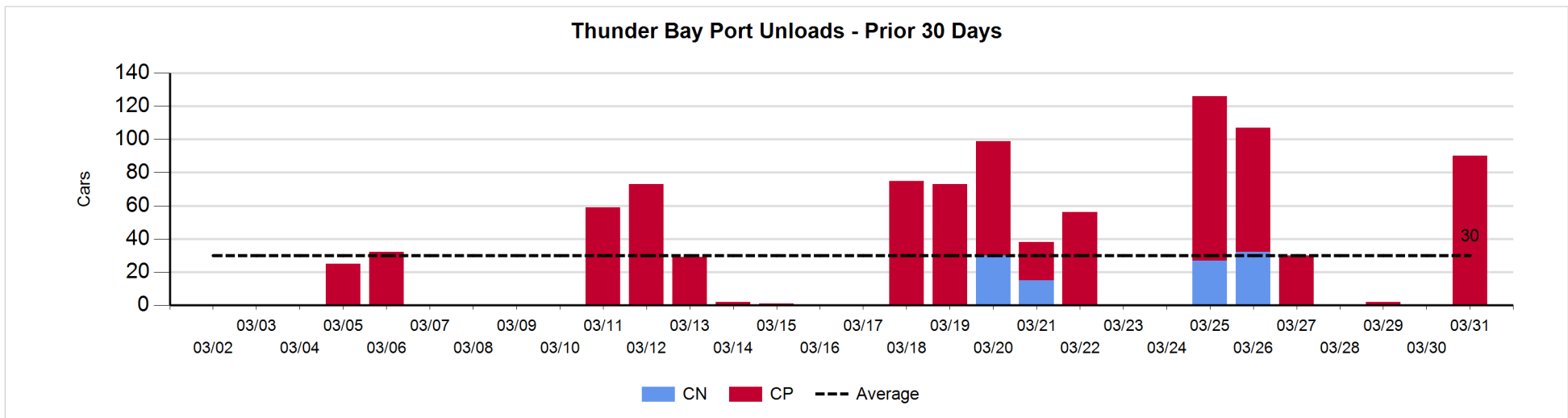
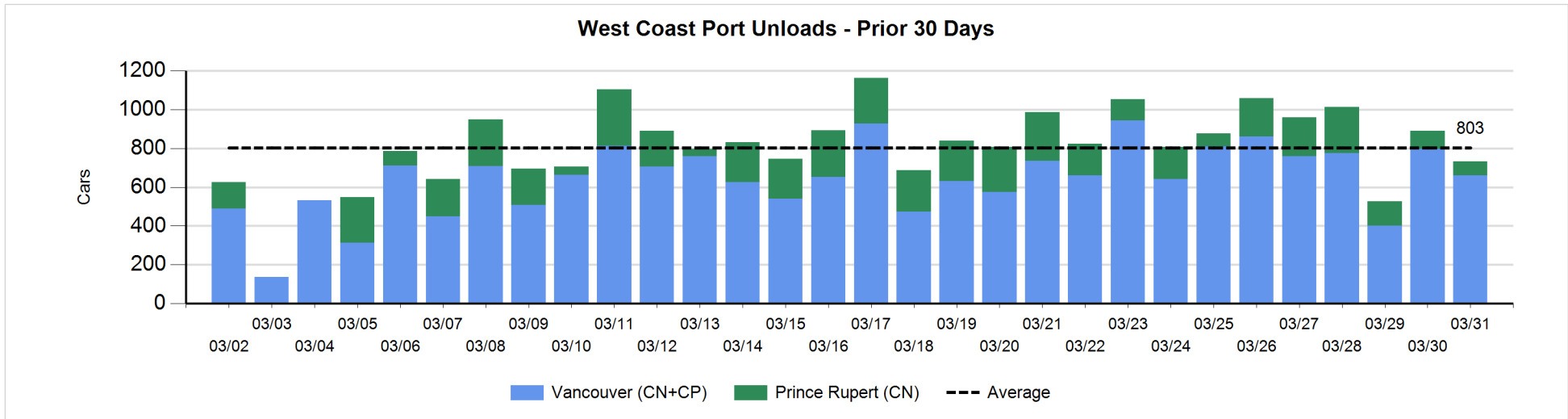
Change in Loads Not Moving 48 Hours or More - 3/31/2019

	E Canada	Prince Rupert	Thunder Bay	USA/MEX	Vancouver	Total
CN						
Origin		-93	0	-7	-100	-200
Enroute	-1	-2		-8	2	-9
Destination	5	0	2	6	-4	9
	4	-95	2	-9	-102	-200
CP						
Origin	18		56	0	-172	-98
Enroute	8		1	-63	-21	-75
Destination	0		11		17	28
	26		68	-63	-176	-145
US Rail / Short Line						
Origin						
Enroute				-11		-11
Destination	27			-5	4	26
	27			-16	4	15



Port Unloads - 3/31/2019

	Prince Rupert	Vancouver	West Coast Total	Thunder Bay	Total
CN	73	276	349		349
CP	1	383	384	90	474
	74	659	733	90	823



Port Terminal Status

Vancouver

Daily Activity for 3/31/2019

	Cars Arrived	Cars Received in Interchange	Cars Delivered in Interchange	Cars Placed for Unloading	Loads on Wheels at Destination As of 3/31/2019
CN	44	440	44	391	470
CP	653	44	446	443	784
SRY				4	51

Port Unloads

	03/31	03/30	Week To Date	Last Week
CN	276	407	2,124	2,358
CP	383	389	2,937	2,302
SRY	1	13	101	78

Age Profile of Loaded Cars Waiting Placement for Unloading

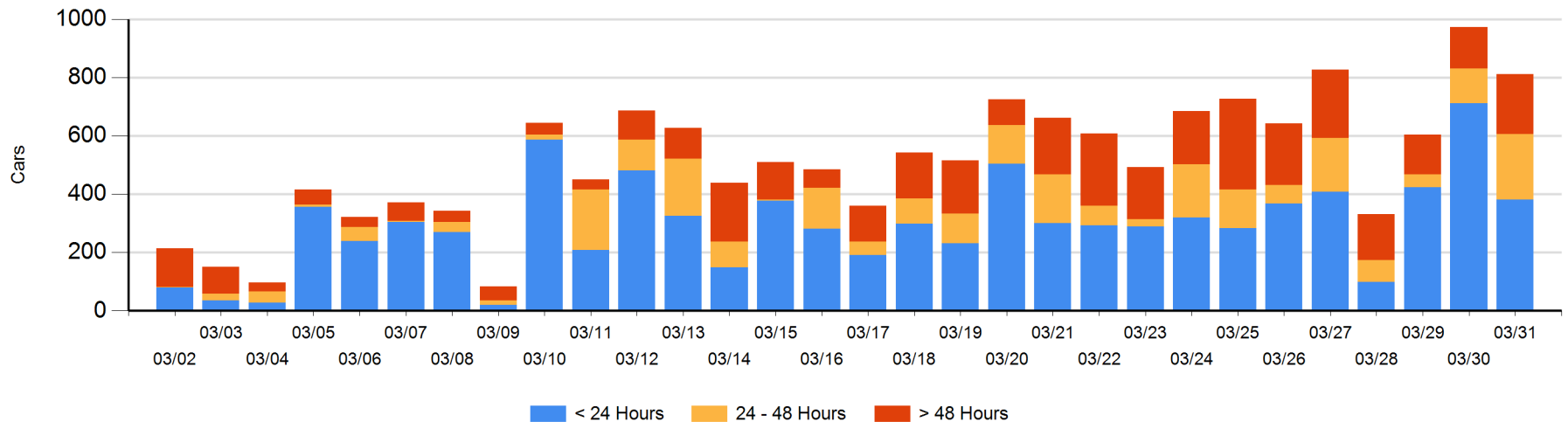
Today

	< 24 Hrs	24 - 48 Hrs	> 48-72 Hrs	> 72 Hrs	Total On Hand
CN	44	126	19	9	198
CP	338	99	74	103	614
SRY					0

Change in Last 24 Hours

	< 24 Hrs	24-48 Hrs	48 - 72 Hrs	> 72 Hrs
CN	-278	87	16	-26
CP	-51	18	33	40
SRY				

Loaded Cars on Hand Vancouver Waiting for Placement - Last 30 Days All Railways



Port Terminal Status

Prince Rupert

Daily Activity for 3/31/2019

	Cars Arrived	Cars Received in Interchange	Cars Delivered in Interchange	Cars Placed for Unloading	Loads on Wheels at Destination As of 3/31/2019
CN	106			106	207

Port Unloads

	03/31	03/30	Week To Date	Last Week
CN	73	94	995	1,343

Age Profile of Loaded Cars Waiting Placement for Unloading

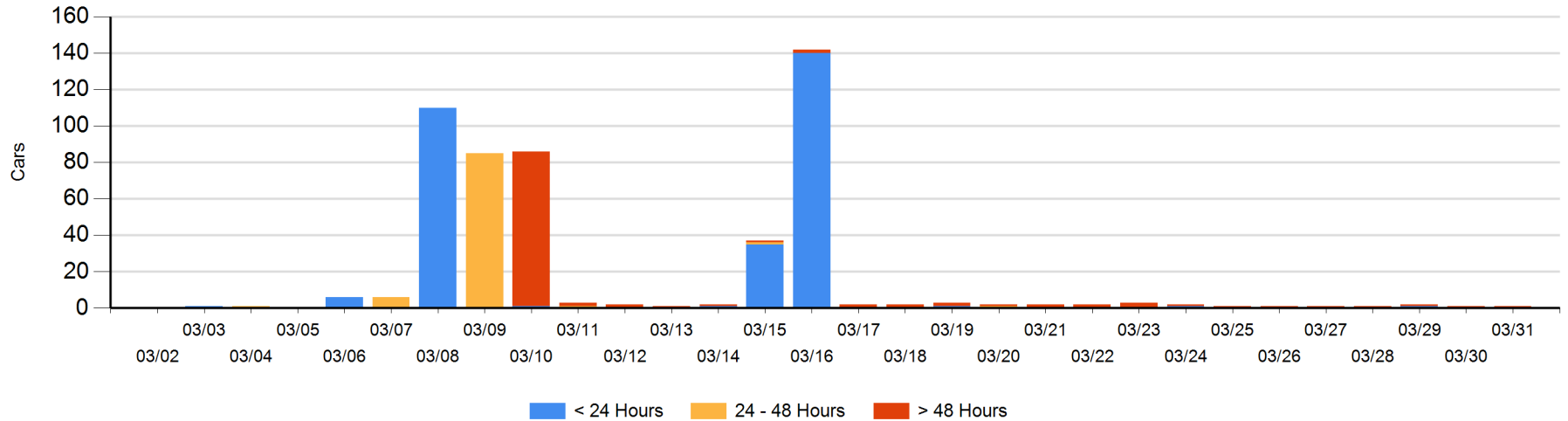
Today

	< 24 Hrs	24 - 48 Hrs	> 48-72 Hrs	> 72 Hrs	Total On Hand
CN				1	1

Change in Last 24 Hours

	< 24 Hrs	24-48 Hrs	48 - 72 Hrs	> 72 Hrs
CN				0

Loaded Cars on Hand Prince Rupert Waiting for Placement - Last 30 Days All Railways



Port Terminal Status

Thunder Bay

Daily Activity for 3/31/2019

	Cars Arrived	Cars Received in Interchange	Cars Delivered in Interchange	Cars Placed for Unloading	Loads on Wheels at Destination As of 3/31/2019
CN	85				190
CP	240				251

Port Unloads

	03/31	03/30	Week To Date	Last Week
CN			59	45
CP	90		296	296

Age Profile of Loaded Cars Waiting Placement for Unloading

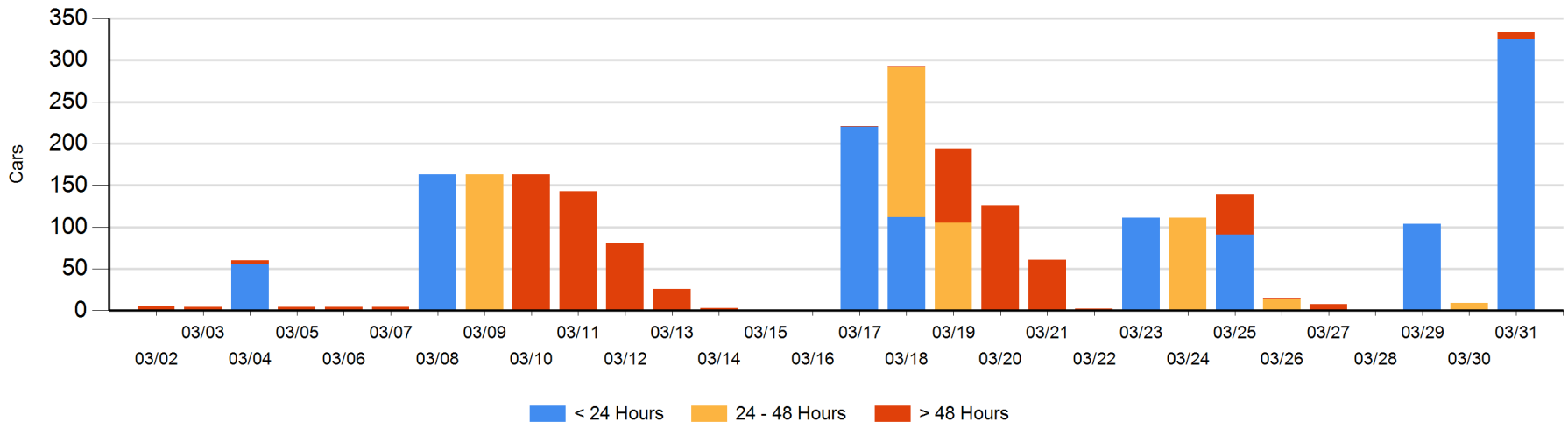
Today

	< 24 Hrs	24 - 48 Hrs	> 48-72 Hrs	> 72 Hrs	Total On Hand
CN	85		2		87
CP	240		7		247

Change in Last 24 Hours

	< 24 Hrs	24-48 Hrs	48 - 72 Hrs	> 72 Hrs
CN	85	-2	2	
CP	240	-7	7	

Loaded Cars on Hand Thunder Bay Waiting for Placement - Last 30 Days All Railways



Measurement Definitions

Loads on Wheels	<p>Count of loaded rail cars including all rail cars that have been released loaded at origin and have not been reported by the railway as unloaded at destination.</p> <p>Counts include all rail cars (hopper cars and boxcars) moving within a pipeline.</p>
Loads Not Moving	<p>Loaded rail cars for which the railways have not reported a movement event for 48 hours or more whether the rail car is at origin, enroute or at destination.</p>
Port Unloads	<p>Count of rail cars reported by railways as unloaded at the western port destinations of Vancouver, Prince Rupert and Thunder Bay.</p> <p>Unload counts include all rail cars (hopper cars and boxcars) unloaded by all receivers including major port terminals, transloaders and other receivers.</p>
Cars Arrived	<p>Count of rail cars reported as arrived at the destination railway terminal.</p>
Cars Received in Interchange	<p>Count of rail cars received in interchange by each railway within a destination railway terminal. Interchange activity is tracked for the Vancouver and Thunder Bay pipelines as applicable.</p>
Cars Delivered in Interchange	<p>Count of rail cars delivered in interchange by each railway within a destination railway terminal. Interchange activity is tracked for the Vancouver and Thunder Bay pipelines as applicable.</p>
Cars Placed for Unloading	<p>Count of rail cars reported by the railways as placed loaded at the receiver's facility for unloading.</p>
Loads on Wheels at Destination	<p>Count of rail cars that remain under load within the destination railway terminal including rail cars that have been reported as placed for unloading but not yet reported as unloaded.</p>
Waiting Placement for Unloading	<p>Count of rail cars that have been reported as arrived at the destination railway terminal but not reported as placed for unloading by the railway.</p> <p>For the Ports of Vancouver, Prince Rupert and Thunder Bay the count of rail cars waiting placement for unloading is categorized by age – i.e. the elapsed time from arrival at destination to the current report date.</p>