

SPEED READ

- Loads on wheels decreased overnight, marking a decline in both CN and CP volumes. On a net basis, volumes fell due to lower traffic in the Vancouver, USA/MEX and E. Canada corridors offset by higher volumes in the Thunder Bay and Prince Rupert corridors.
- Network fluidity deteriorated overnight, led by a rise in idle car counts on both CN and CP by 26% (+270) and 33% (+247), respectively. The total count of cars for 4+ days on both railways declined 21% (-158) overnight - now at 594 cars.
- Three days in Week 40 unloads now ahead of prior week's performance by nearly 700 unloads, reflecting improved week over week performance at Vancouver and Thunder Bay offset by lower unloads at Prince Rupert.

Loads on Wheels

- Loads on wheels declined for the third consecutive day, down 5% (-583) overnight, due to lower volumes on both CN and CP - combined total at 11,105 and in line with the trailing 30-day average.
- On a net basis, the decline in loads on wheels reflects lower volumes in the Vancouver, USA/MEX and E. Canada corridors offset by higher volumes in the Thunder Bay and Prince Rupert corridors.
- CN volumes fell 3% (-148) overnight and have now decreased for the third consecutive day, with reduced volumes in the Vancouver, E. Canada and USA/MEX corridors offset by higher volumes in the Prince Rupert and Thunder Bay corridors. System wide CN loads on wheels presently at 5,701 and 6% below the trailing 30-day average.
- CP volumes declined 8% (-440) overnight, driven by a decline in volumes in the Vancouver and USA/MEX corridors offset by a rise in traffic in the Thunder Bay and E. Canada corridors. CP system wide loads on wheels currently at 5,252 and 8% above the trailing 30-day average.
- Vancouver presently at 6,570, declined for the third consecutive day, down 8% (-571) overnight, now 3% below the trailing 30-day average.
- The Prince Rupert pipeline presently at 1,598, rose 4% (+60) overnight, and 3% above the trailing 30-day average.
- Thunder Bay volumes rose 4% (+71) overnight - now at 2,014, the highest seen in the last 30 days, and 55% above the trailing 30-day average, with 75% of traffic moving on CP.

Hopper Car Rationing

- CN rationed 100 hopper cars in week 38.

Loads Not Moving

- **The count of cars not moving for 48+ hours increased 29% (+517) overnight, marking higher counts on both CN and CP. Idle car counts presently at 2,306 and 32% above the trailing 30-day average.**
- CN
 - **The count of idle cars for 48+ hours increased 26% (+270) overnight - currently at 1,309 cars.**
 - The number of cars idle for 4+ days fell 11% (-49) overnight - presently at 384 cars.
 - The count of cars not moving for 7+ days increased significantly by 47% (+92) overnight - currently at 288 cars.
 - Vancouver represents 58% of all idle cars.
 - In total 34% of all idle cars are dwelling at origin locations.
- CP
 - **CP idle car counts for 48+ hours increased 33% (+247) overnight - presently at 997 cars.**
 - The number of cars idle for 4+ days fell 34% (-109) overnight - presently at 210 cars.

- The number of cars idle for 7+ days decreased 32% (-18) overnight - presently at 38 cars, the lowest seen in the last 30 days.
- Vancouver accounts for 80% of all idle cars.
- In total 38% of all idle cars are dwelling at origin locations.

Port Performance

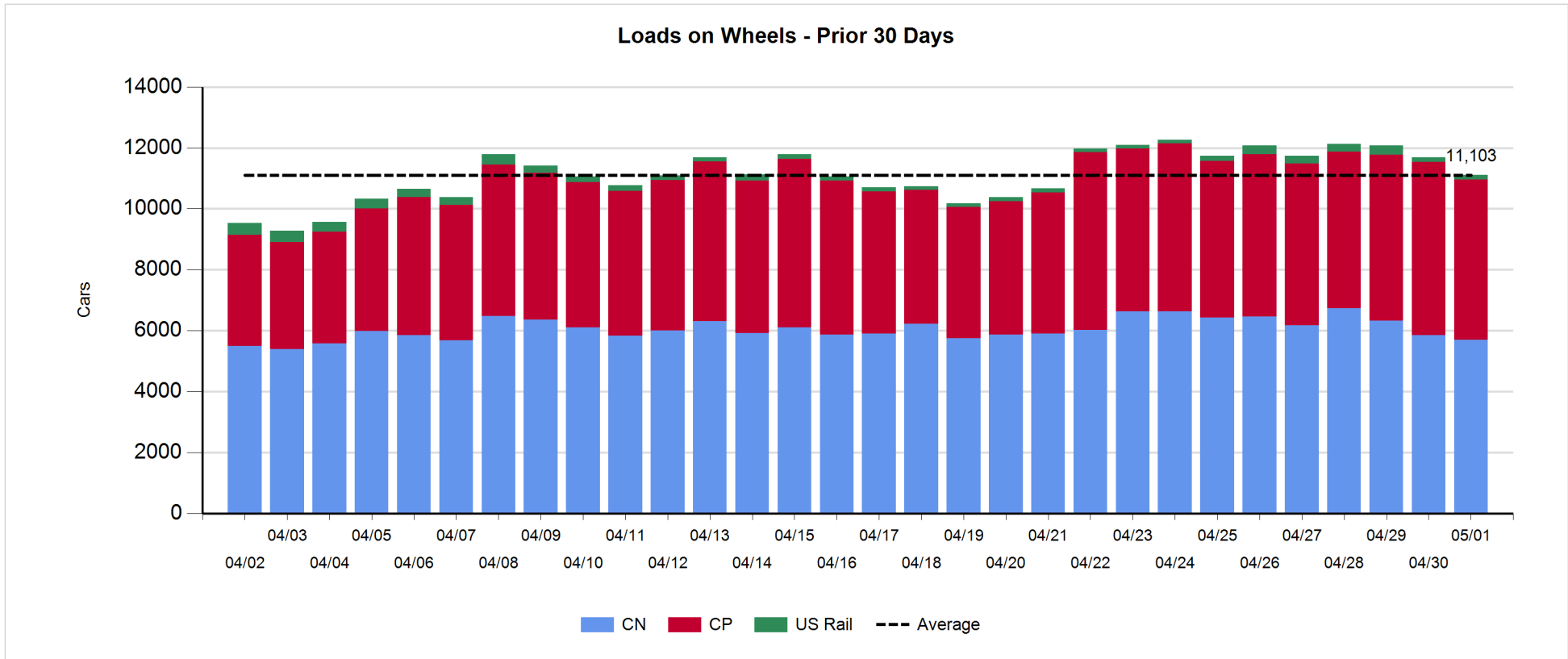
- CN and CP reported a total of 1,370 cars unloaded at the three major ports, now 14% above the trailing 30-day average. Three days in Week 40 unloads now ahead of last week's pace by nearly 700 unloads, reflecting higher unloads at Vancouver and Thunder Bay offset by lower unloads at Prince Rupert.
- Vancouver
 - 922 unloads reported by CN and CP at the Port of Vancouver; CN - 365 and CP - 557. Three days in Week 40 unloads are tracking ahead of last week's performance by more than 600 unloads.
 - There are 1,400 cars on site at Vancouver with nearly 700 cars arriving at the port in the last 24 hours.
 - CN and CP have more than 2,700 cars in British Columbia en route to Vancouver, with more than 1,400 cars at Kamloops and west, and 54% of traffic moving on CP.
- Prince Rupert
 - Prince Rupert reported 186 unloads, now behind last week's unloads after three days by 100 unloads.
 - Loads on wheels now above 1,000 cars - now at 1,598 cars.
 - There are more than 500 cars west of Jasper en route to Prince Rupert.
 - There are more than 200 cars on site at Prince Rupert with 200 cars arriving at the port in the last 24 hours.
- Thunder Bay
 - 262 unloads were reported at Thunder Bay yesterday. Three days in Week 40 unloads are tracking ahead of last week's pace by 150 unloads.
 - There are more than 650 cars on site at Thunder Bay with more than 400 cars arriving at the port in the prior 24 hours.
 - There are 600 cars en route to Thunder Bay from Winnipeg and east.

Daily Loads on Wheels - 5/1/2019

	E Canada	Prince Rupert	Thunder Bay	USA/MEX	Vancouver	Total
CN	419	1,598	495	167	3,022	5,701
CP	140		1,519	84	3,509	5,252
Short Line	20				39	59
US Rail				93		93
	579	1,598	2,014	344	6,570	11,105

Change in Loads on Wheels - Prior 24 Hours

	E Canada	Prince Rupert	Thunder Bay	USA/MEX	Vancouver	Total
CN	-95	60	34	-21	-126	-148
CP	17		37	-39	-455	-440
Short Line	8				10	18
US Rail				-13		-13
	-70	60	71	-73	-571	-583

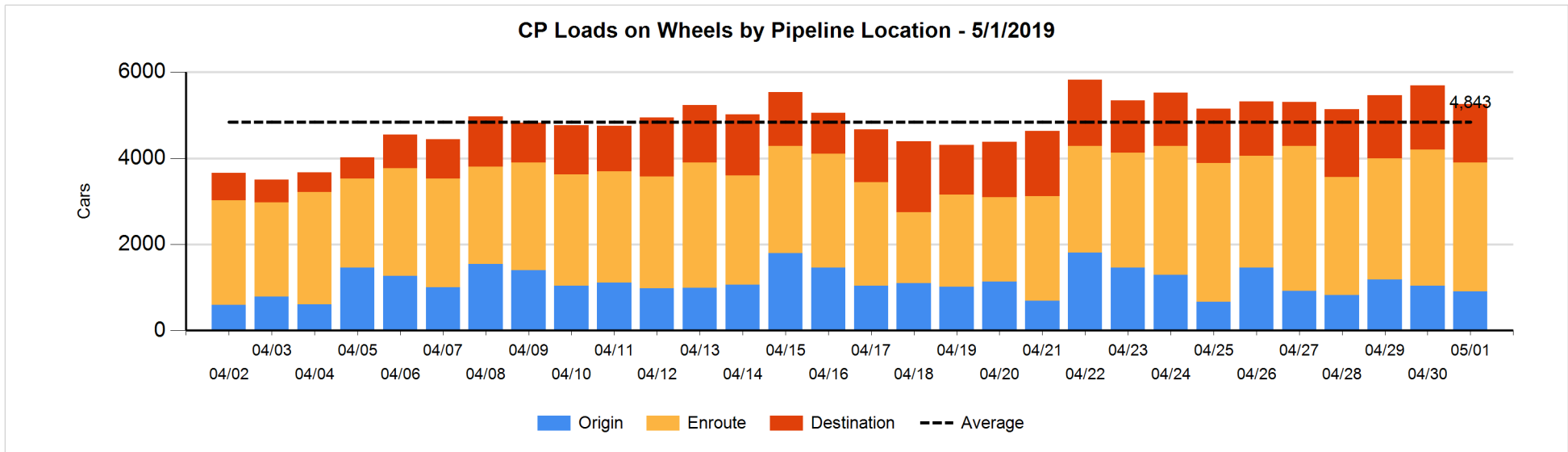
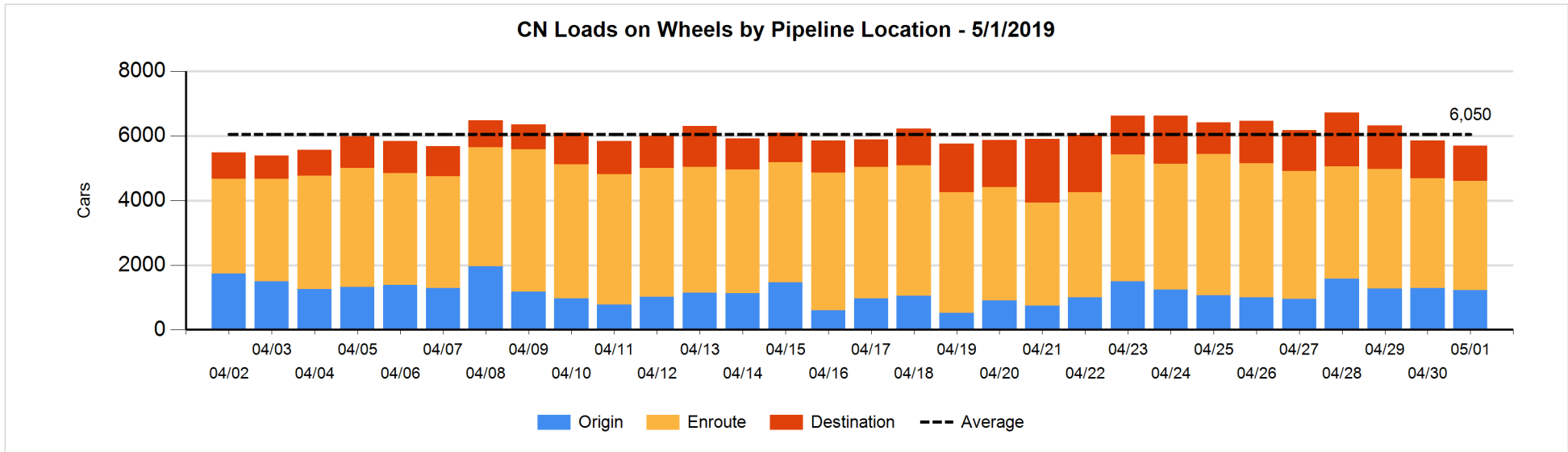


Daily Loads on Wheels By Pipeline Location - 5/1/2019

	E Canada	Prince Rupert	Thunder Bay	USA/MEX	Vancouver	Total
CN						
Origin		485	99	15	624	1,223
Enroute	337	886	208	121	1,831	3,383
Destination	82	227	188	31	567	1,095
	419	1,598	495	167	3,022	5,701
CP						
Origin	64		249	1	598	912
Enroute	71		781	20	2,116	2,988
Destination	5		489	63	795	1,352
	140		1,519	84	3,509	5,252
US Rail / Short Line						
Origin						
Enroute				47		47
Destination	20			46	39	105
	20			93	39	152

Change in Daily Loads on Wheels By Pipeline Location - Prior 24 Hours

	E Canada	Prince Rupert	Thunder Bay	USA/MEX	Vancouver	Total
CN						
Origin	-8	-195	-5	7	132	-69
Enroute	-10	252	-49	-5	-203	-15
Destination	-77	3	88	-23	-55	-64
	-95	60	34	-21	-126	-148
CP						
Origin	19		-16	0	-129	-126
Enroute	-5		-24	-41	-103	-173
Destination	3		77	2	-223	-141
	17		37	-39	-455	-440
US Rail / Short Line						
Origin						
Enroute				5		5
Destination	8			-18	10	0
	8			-13	10	5

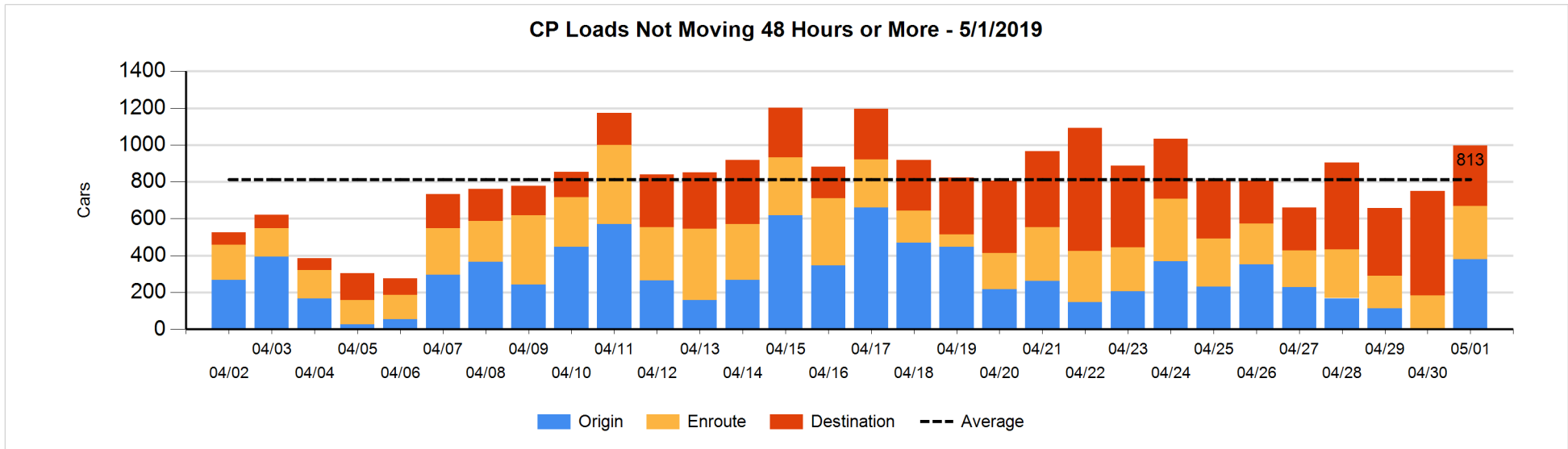
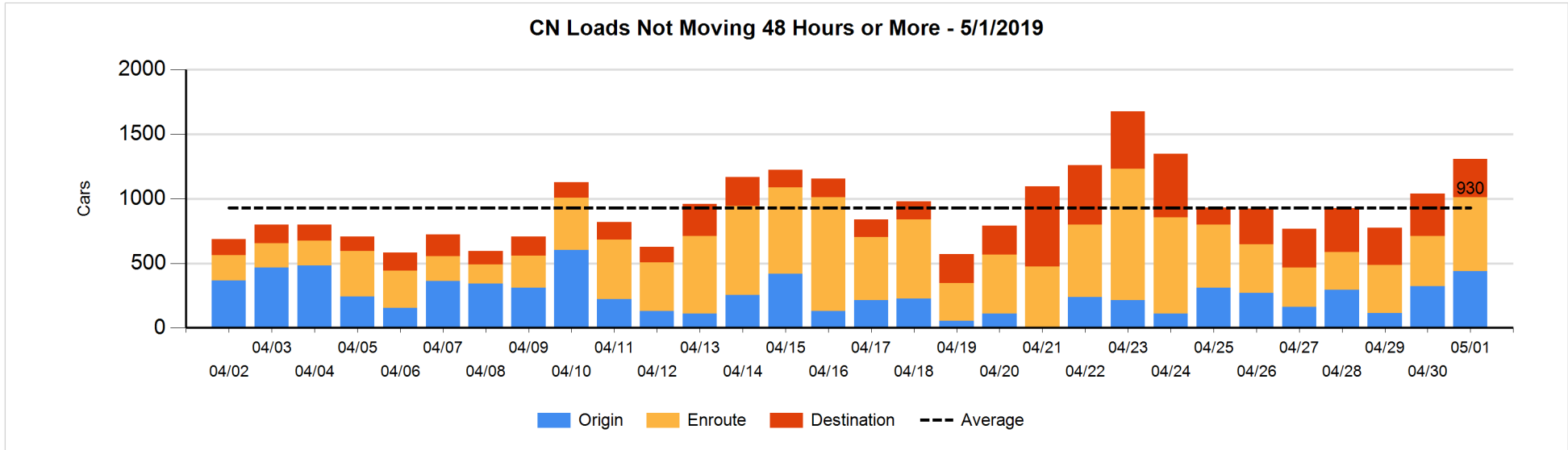


Loads Not Moving 48 Hours or More - 5/1/2019

	E Canada	Prince Rupert	Thunder Bay	USA/MEX	Vancouver	Total
CN						
Origin		205		3	232	440
Enroute	61	40		61	410	572
Destination	66	103	3	14	111	297
	127	348	3	78	753	1309
CP						
Origin	36		15		329	380
Enroute	1		1	12	275	289
Destination	1		102	31	194	328
	38		118	43	798	997
US Rail / Short Line						
Origin						
Enroute				23		23
Destination				21	13	34
				44	13	57

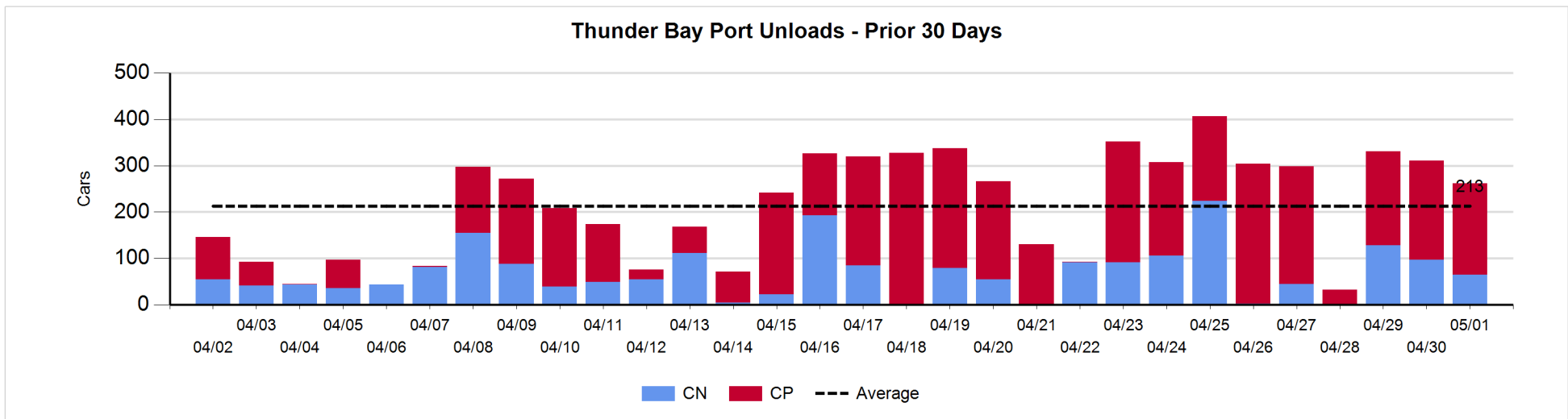
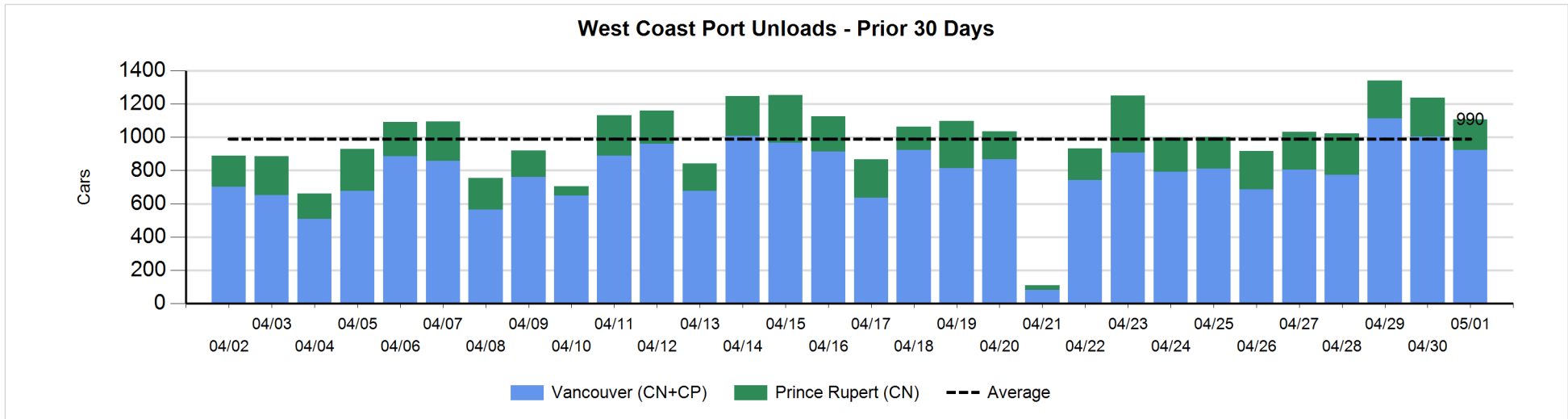
Change in Loads Not Moving 48 Hours or More - 5/1/2019

	E Canada	Prince Rupert	Thunder Bay	USA/MEX	Vancouver	Total
CN						
Origin		-2		2	118	118
Enroute	-52	-41	-1	6	273	185
Destination	42	-16	-93	12	22	-33
	-10	-59	-94	20	413	270
CP						
Origin	36		15		328	379
Enroute	0		0	-3	109	106
Destination	0		-118	-5	-115	-238
	36		-103	-8	322	247
US Rail / Short Line						
Origin						
Enroute				-2		-2
Destination				-3	-6	-9
				-5	-6	-11



Port Unloads - 5/1/2019

	Prince Rupert	Vancouver	West Coast Total	Thunder Bay	Total
CN	186	365	551	65	616
CP		557	557	197	754
	186	922	1,108	262	1,370



Port Terminal Status

Vancouver

Daily Activity for 5/1/2019

	Cars Arrived	Cars Received in Interchange	Cars Delivered in Interchange	Cars Placed for Unloading	Loads on Wheels at Destination As of 5/1/2019
CN	260	158	83	474	567
CP	428	63	158	448	795
SRY	1	20		8	39

Port Unloads

	05/01	04/30	Week To Date	Last Week
CN	365	484	1,450	2,384
CP	557	519	1,587	3,132
SRY	12	27	52	42

Age Profile of Loaded Cars Waiting Placement for Unloading

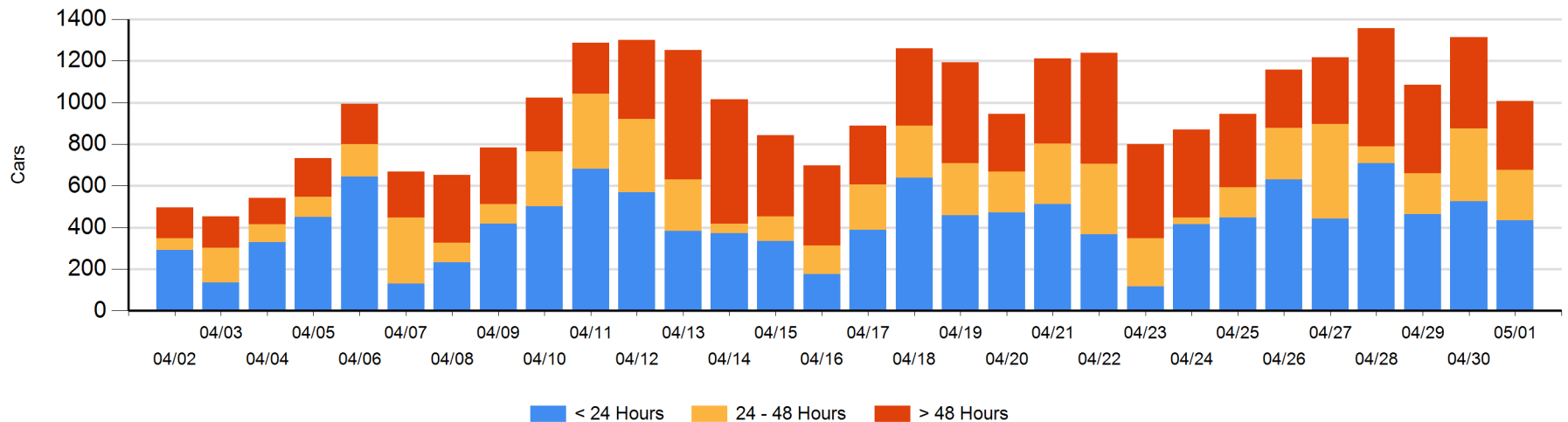
Today

	< 24 Hrs	24 - 48 Hrs	> 48-72 Hrs	> 72 Hrs	Total On Hand
CN	221	78	27	71	397
CP	213	165	31	200	609
SRY					0

Change in Last 24 Hours

	< 24 Hrs	24-48 Hrs	48 - 72 Hrs	> 72 Hrs
CN	5	-102	8	-33
CP	-98	-3	-25	-61
SRY				

Loaded Cars on Hand Vancouver Waiting for Placement - Last 30 Days All Railways



Port Terminal Status

Prince Rupert

Daily Activity for 5/1/2019

	Cars Arrived	Cars Received in Interchange	Cars Delivered in Interchange	Cars Placed for Unloading	Loads on Wheels at Destination As of 5/1/2019
CN	194			191	227

Port Unloads

	05/01	04/30	Week To Date	Last Week
CN	186	234	649	1,640

Age Profile of Loaded Cars Waiting Placement for Unloading

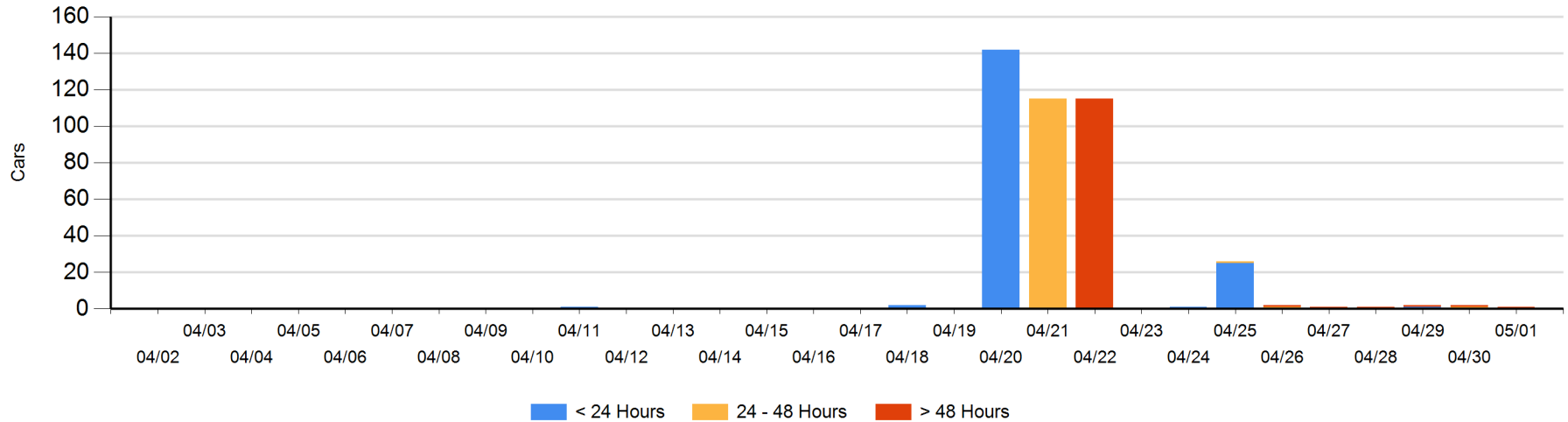
Today

	< 24 Hrs	24 - 48 Hrs	> 48-72 Hrs	> 72 Hrs	Total On Hand
CN				1	1

Change in Last 24 Hours

	< 24 Hrs	24-48 Hrs	48 - 72 Hrs	> 72 Hrs
CN		-1		0

Loaded Cars on Hand Prince Rupert Waiting for Placement - Last 30 Days All Railways



Port Terminal Status

Thunder Bay

Daily Activity for 5/1/2019

	Cars Arrived	Cars Received in Interchange	Cars Delivered in Interchange	Cars Placed for Unloading	Loads on Wheels at Destination As of 5/1/2019
CN	153			89	188
CP	274			318	489

Port Unloads

	05/01	04/30	Week To Date	Last Week
CN	65	97	290	559
CP	197	214	614	1,233

Age Profile of Loaded Cars Waiting Placement for Unloading

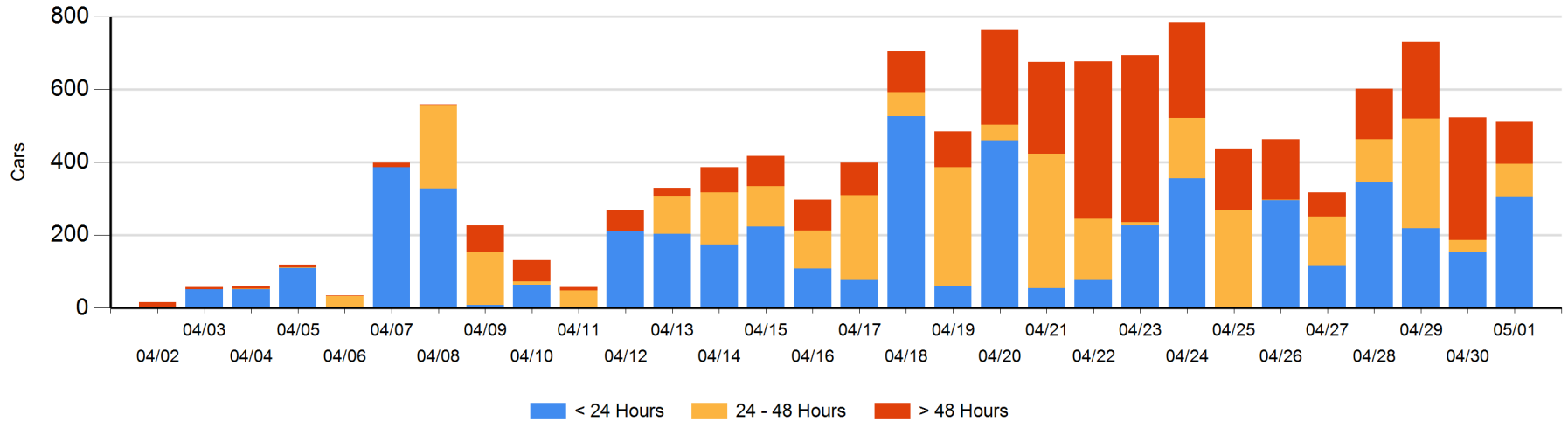
Today

	< 24 Hrs	24 - 48 Hrs	> 48-72 Hrs	> 72 Hrs	Total On Hand
CN	153			6	159
CP	154	88	9	101	352

Change in Last 24 Hours

	< 24 Hrs	24-48 Hrs	48 - 72 Hrs	> 72 Hrs
CN	153		-88	-1
CP	-1	57	-164	32

Loaded Cars on Hand Thunder Bay Waiting for Placement - Last 30 Days All Railways



Measurement Definitions

Loads on Wheels	<p>Count of loaded rail cars including all rail cars that have been released loaded at origin and have not been reported by the railway as unloaded at destination.</p> <p>Counts include all rail cars (hopper cars and boxcars) moving within a pipeline.</p>
Loads Not Moving	<p>Loaded rail cars for which the railways have not reported a movement event for 48 hours or more whether the rail car is at origin, enroute or at destination.</p>
Port Unloads	<p>Count of rail cars reported by railways as unloaded at the western port destinations of Vancouver, Prince Rupert and Thunder Bay.</p> <p>Unload counts include all rail cars (hopper cars and boxcars) unloaded by all receivers including major port terminals, transloaders and other receivers.</p>
Cars Arrived	<p>Count of rail cars reported as arrived at the destination railway terminal.</p>
Cars Received in Interchange	<p>Count of rail cars received in interchange by each railway within a destination railway terminal. Interchange activity is tracked for the Vancouver and Thunder Bay pipelines as applicable.</p>
Cars Delivered in Interchange	<p>Count of rail cars delivered in interchange by each railway within a destination railway terminal. Interchange activity is tracked for the Vancouver and Thunder Bay pipelines as applicable.</p>
Cars Placed for Unloading	<p>Count of rail cars reported by the railways as placed loaded at the receiver's facility for unloading.</p>
Loads on Wheels at Destination	<p>Count of rail cars that remain under load within the destination railway terminal including rail cars that have been reported as placed for unloading but not yet reported as unloaded.</p>
Waiting Placement for Unloading	<p>Count of rail cars that have been reported as arrived at the destination railway terminal but not reported as placed for unloading by the railway.</p> <p>For the Ports of Vancouver, Prince Rupert and Thunder Bay the count of rail cars waiting placement for unloading is categorized by age – i.e. the elapsed time from arrival at destination to the current report date.</p>