

SPEED READ

- Loads on wheels decreased overnight, marking lower CP traffic offset by a rise in CN volumes. On a net basis, volumes fell due to lower traffic in the Vancouver, Prince Rupert and USA/MEX corridors offset by higher volumes in the Thunder Bay and E. Canada corridors.
- Network fluidity deteriorated overnight, led by a rise in idle car counts on both CN and CP by 3% (+19) and 15% (+102), respectively. The total count of cars for 4+ days on both railways fell 31% (-212) overnight - now at 463 cars.
- Week 40 unloads concluded ahead of prior week's performance by around 1,450 unloads, marking improved week over week performance across all three major ports - Vancouver, Thunder Bay and Prince Rupert.

Loads on Wheels

- Loads on wheels decreased 3% (-283) overnight, due to lower volumes on CP offset by higher volumes on CN - combined total at 9,978, the lowest seen in the last 30 days, and 11% below the trailing 30-day average.
- On a net basis, the decline in loads on wheels reflects reduced traffic in the Vancouver, Prince Rupert and USA/MEX corridors offset by higher volumes in the Thunder Bay and E. Canada corridors.
- CN volumes increased 2% (+125) overnight, with higher volumes in the E. Canada and Vancouver corridors offset by reduced traffic in the Prince Rupert, Thunder Bay and USA/MEX corridors. System wide CN loads on wheels now at 5,524 and 9% below the trailing 30-day average.
- CP volumes fell 9% (-420) overnight and have now decreased for the fifth consecutive day, driven by a decline in traffic across all corridors other than Thunder Bay. CP system wide loads on wheels currently at 4,321 and 13% below the trailing 30-day average.
- Vancouver currently at 5,912, fell 6% (-399) overnight, now 13% below the trailing 30-day average.
- The Prince Rupert pipeline now at 1,579, declined 3% (-41) overnight, and 2% below the trailing 30-day average.
- Thunder Bay volumes increased 6% (+99) overnight - currently at 1,642 and 14% above the trailing 30-day average, with 70% of traffic moving on CP.

Hopper Car Rationing

- CN rationed 104 hopper cars in week 39.

Loads Not Moving

- **The count of cars not moving for 48+ hours increased 10% (+121) overnight, marking higher counts on both CN and CP. Idle car counts currently at 1,386 and 23% below the trailing 30-day average.**
- CN
 - **The count of idle cars for 48+ hours increased 3% (+19) overnight - currently at 620 cars.**
 - The number of cars idle for 4+ days decreased significantly by 64% (-208) overnight - now at 119 cars, the lowest seen in the last 30 days.
 - The count of cars not moving for 7+ days increased significantly by 70% (+19) overnight - now at 46 cars.
 - Vancouver represents 60% of all idle cars.
 - In total 18% of all idle cars are dwelling at origin locations.
- CP
 - **CP idle car counts for 48+ hours increased 15% (+102) overnight - now at 766 cars.**
 - The number of cars idle for 4+ days decreased marginally by 1% (-4) overnight - now at 344 cars.
 - The number of cars idle for 7+ days increased significantly by 124% (+87) overnight - presently at 157 cars.

- Vancouver accounts for 72% of all idle cars.
- In total 2% of all idle cars are dwelling at origin locations.

Port Performance

- CN and CP reported a total of 1,097 cars unloaded at the three major ports, now 14% below the trailing 30-day average. Week 40 unloads concluded ahead of last week's pace by about 1,450 unloads, marking higher unloads across all three major ports - Vancouver, Thunder Bay and Prince Rupert.
- Vancouver
 - 719 unloads reported by CN and CP at the Port of Vancouver; CN - 251 and CP - 468. Week 40 unloads concluded ahead of last week's performance by 1,100 unloads.
 - There are less than 1,850 cars on site at Vancouver with more than 650 cars arriving at the port in the last 24 hours.
 - CN and CP have 1,450 cars in British Columbia en route to Vancouver, with 500 cars at Kamloops and west, and 81% of traffic moving on CP.
- Prince Rupert
 - Prince Rupert reported 253 unloads, concluded ahead of last week's unloads by 12 unloads.
 - Loads on wheels now above 1,000 cars - presently at 1,579 cars.
 - There are fewer than 650 cars west of Jasper en route to Prince Rupert.
 - There are 150 cars on site at Prince Rupert with 350 cars arriving at the port in the last 24 hours.
- Thunder Bay
 - 125 unloads were reported at Thunder Bay yesterday. Week 40 unloads ended ahead of last week's pace by more than 300 unloads.
 - There are more than 1,000 cars on site at Thunder Bay with less than 150 cars arriving at the port in the prior 24 hours.
 - There are 50 cars en route to Thunder Bay from Winnipeg and east.

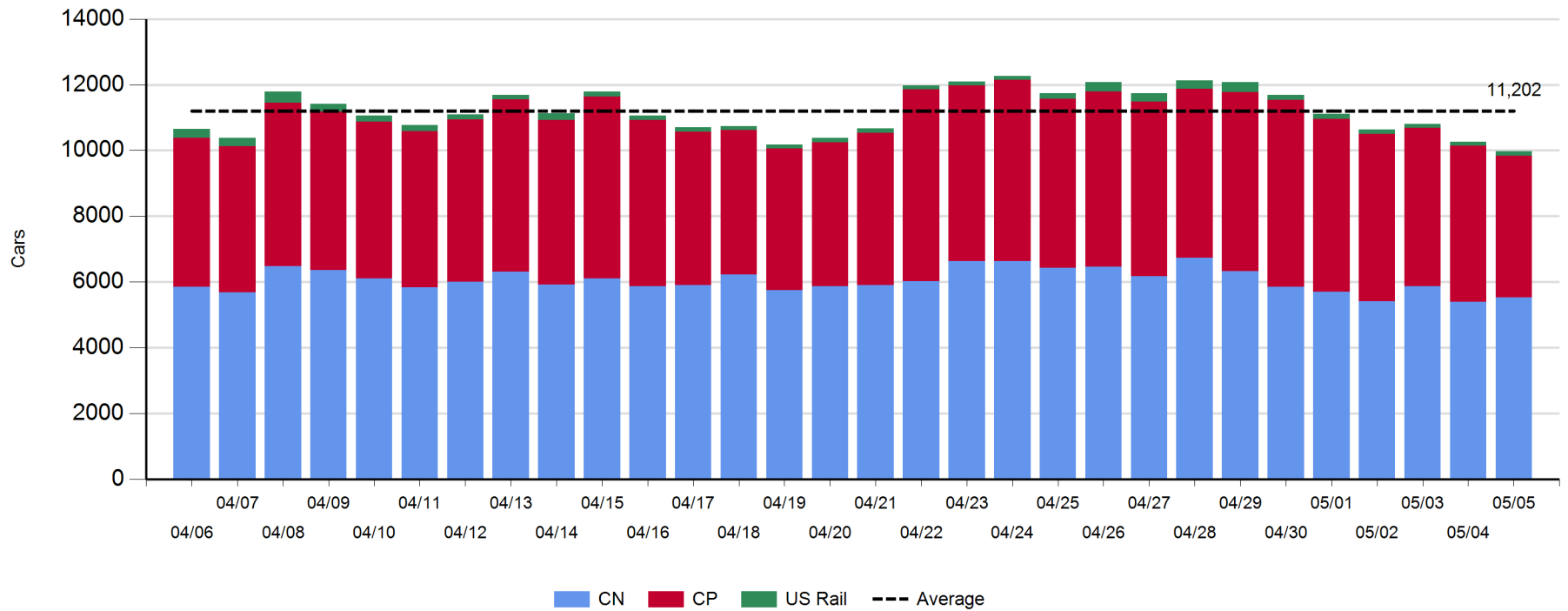
Daily Loads on Wheels - 5/5/2019

	E Canada	Prince Rupert	Thunder Bay	USA/MEX	Vancouver	Total
CN	483	1,579	495	127	2,840	5,524
CP	104		1,147	40	3,030	4,321
Short Line	8				42	50
US Rail				83		83
	595	1,579	1,642	250	5,912	9,978

Change in Loads on Wheels - Prior 24 Hours

	E Canada	Prince Rupert	Thunder Bay	USA/MEX	Vancouver	Total
CN	115	-41	-1	-1	53	125
CP	-46		100	-11	-463	-420
Short Line	5				11	16
US Rail				-4		-4
	74	-41	99	-16	-399	-283

Loads on Wheels - Prior 30 Days

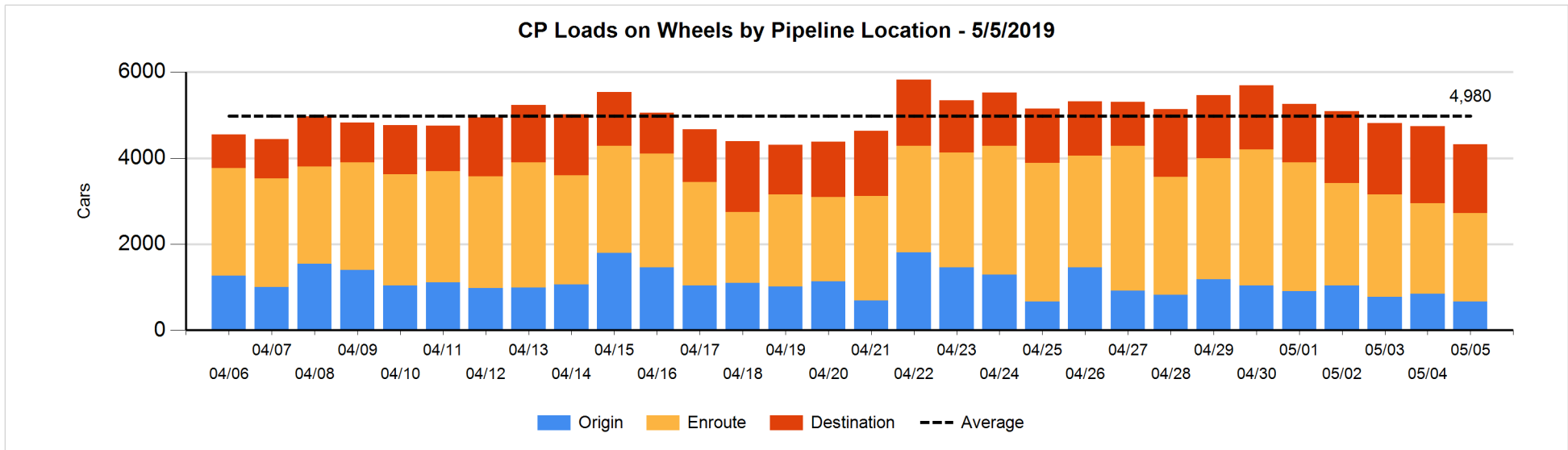
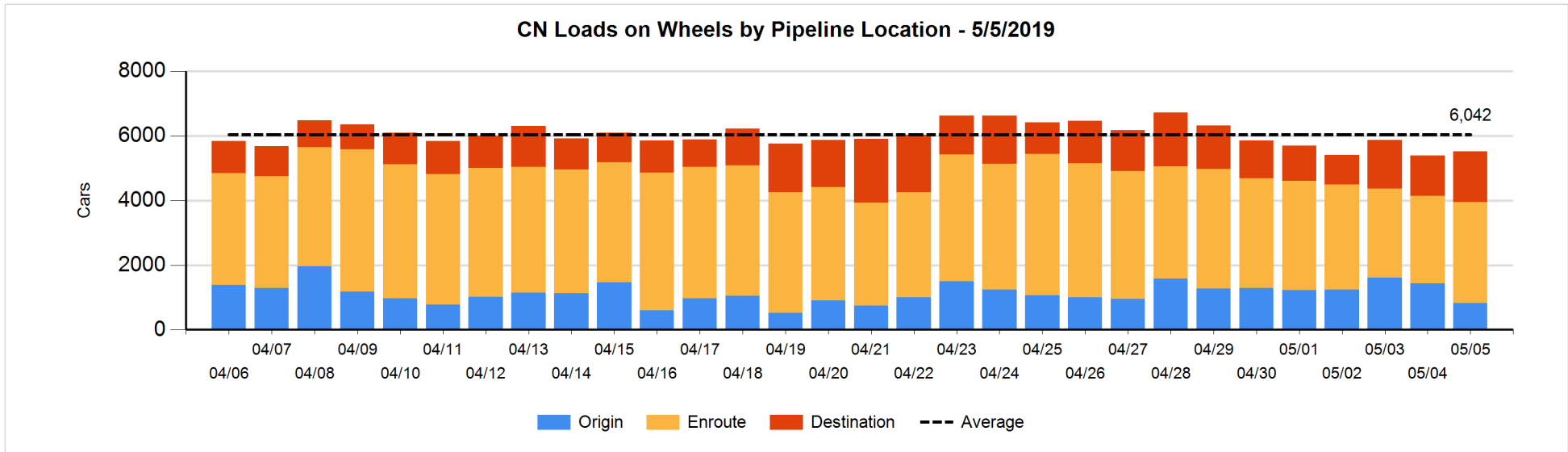


Daily Loads on Wheels By Pipeline Location - 5/5/2019

	E Canada	Prince Rupert	Thunder Bay	USA/MEX	Vancouver	Total
CN						
Origin	2	317	25	1	472	817
Enroute	317	1,119	124	96	1,474	3,130
Destination	164	143	346	30	894	1,577
	483	1,579	495	127	2,840	5,524
CP						
Origin			224	2	438	664
Enroute	90		258	12	1,693	2,053
Destination	14		665	26	899	1,604
	104		1,147	40	3,030	4,321
US Rail / Short Line						
Origin						
Enroute	5			66		71
Destination	3			17	42	62
	8			83	42	133

Change in Daily Loads on Wheels By Pipeline Location - Prior 24 Hours

	E Canada	Prince Rupert	Thunder Bay	USA/MEX	Vancouver	Total
CN						
Origin	-26	-138	-25	-4	-416	-609
Enroute	131	5	22	2	257	417
Destination	10	92	2	1	212	317
	115	-41	-1	-1	53	125
CP						
Origin	-40		-25	0	-118	-183
Enroute	15		115	-2	-172	-44
Destination	-21		10	-9	-173	-193
	-46		100	-11	-463	-420
US Rail / Short Line						
Origin						
Enroute	5			0		5
Destination	0			-4	11	7
	5			-4	11	12

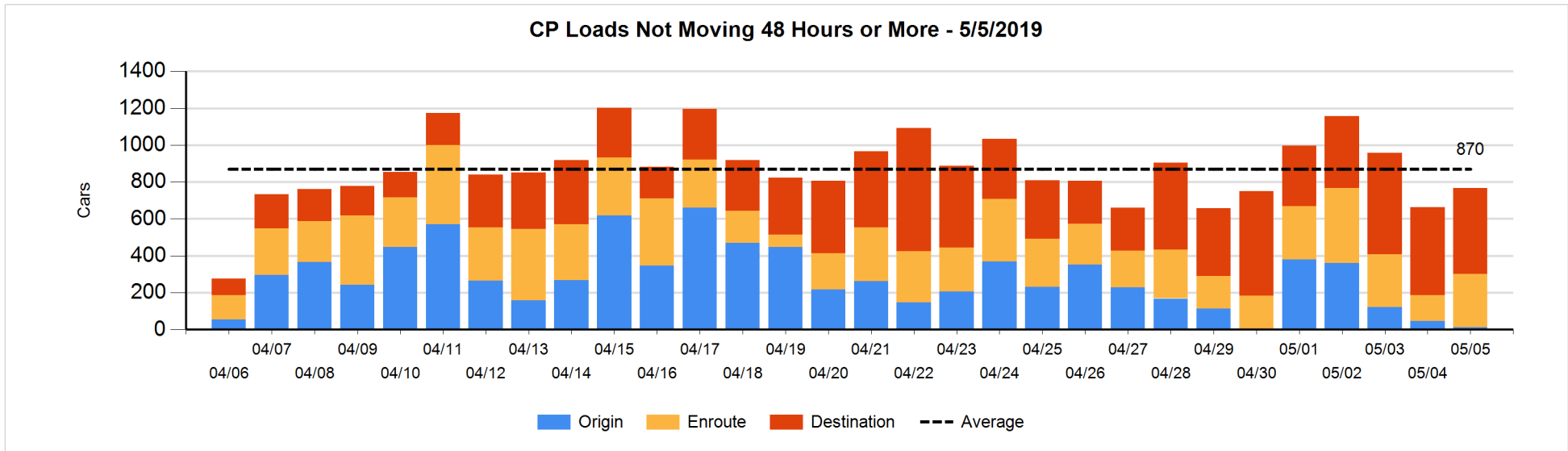
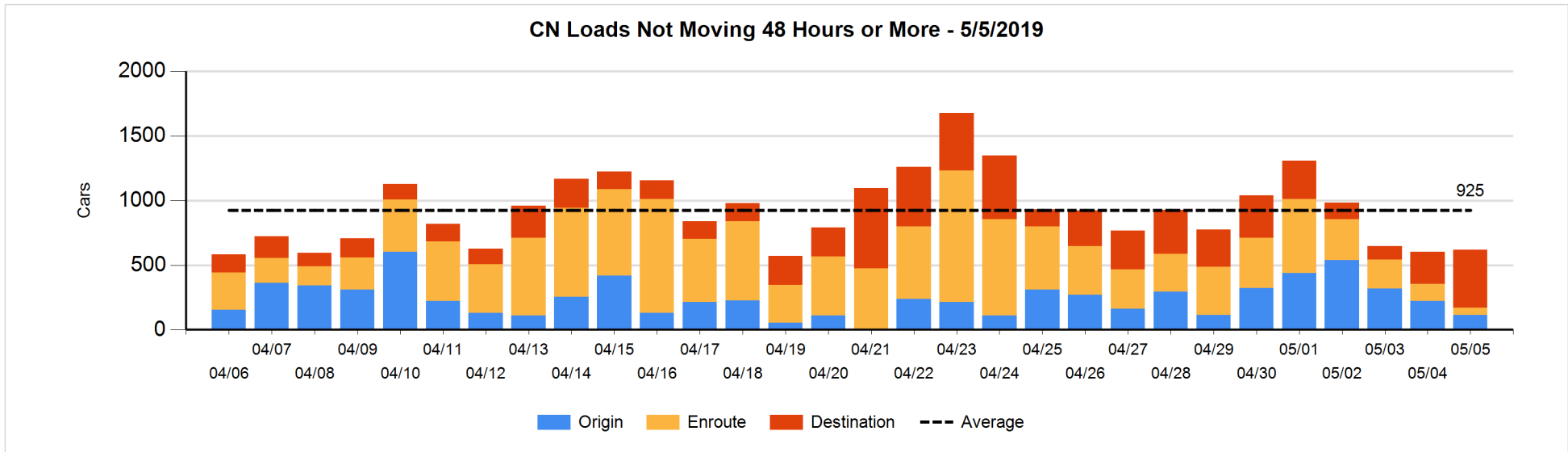


Loads Not Moving 48 Hours or More - 5/5/2019

	E Canada	Prince Rupert	Thunder Bay	USA/MEX	Vancouver	Total
CN						
Origin		3		1	109	113
Enroute	7	11		37	2	57
Destination	131	4	25	29	261	450
	138	18	25	67	372	620
CP						
Origin				2	11	13
Enroute			3	3	283	289
Destination			183	26	255	464
			186	31	549	766
US Rail / Short Line						
Origin						
Enroute				22		22
Destination	3			16	26	45
	3			38	26	67

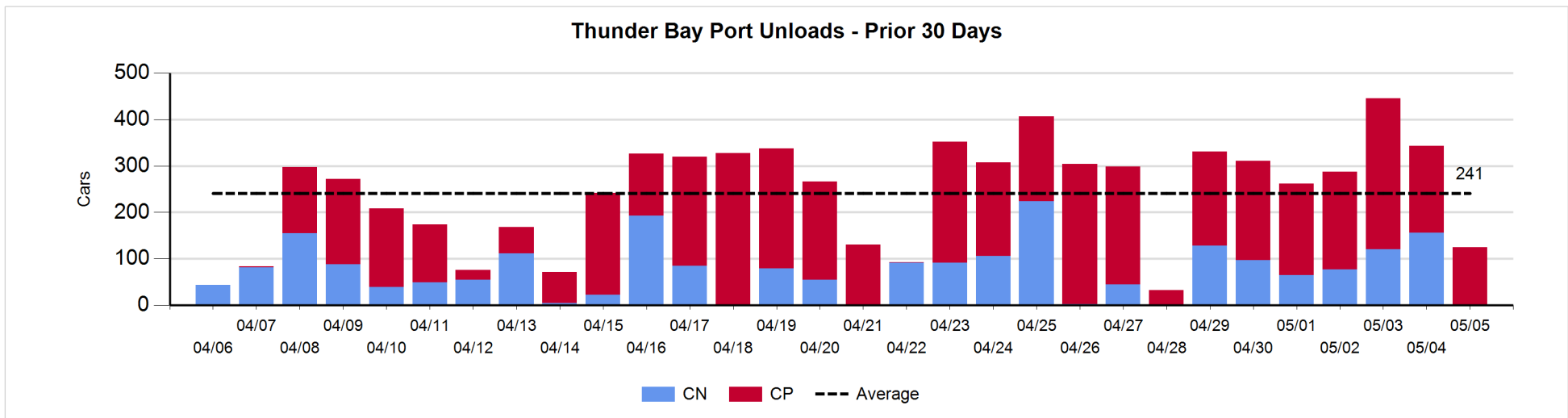
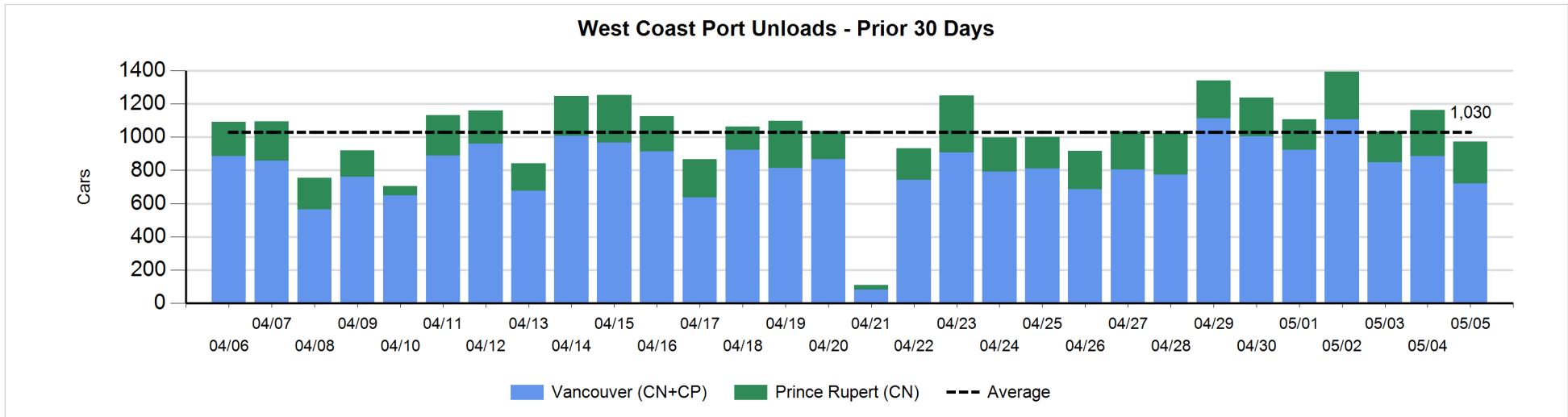
Change in Loads Not Moving 48 Hours or More - 5/5/2019

	E Canada	Prince Rupert	Thunder Bay	USA/MEX	Vancouver	Total
CN						
Origin		2		0	-110	-108
Enroute	-18	-12		5	-50	-75
Destination	123	0	15	21	43	202
	105	-10	15	26	-117	19
CP						
Origin	-35			1	1	-33
Enroute	-16		-3	1	167	149
Destination			20	6	-40	-14
	-51		17	8	128	102
US Rail / Short Line						
Origin						
Enroute				-1		-1
Destination	2			-3	5	4
	2			-4	5	3



Port Unloads - 5/5/2019

	Prince Rupert	Vancouver	West Coast Total	Thunder Bay	Total
CN	253	251	504	1	505
CP		468	468	124	592
	253	719	972	125	1,097



Port Terminal Status

Vancouver

Daily Activity for 5/5/2019

	Cars Arrived	Cars Received in Interchange	Cars Delivered in Interchange	Cars Placed for Unloading	Loads on Wheels at Destination As of 5/5/2019
CN	377	243	135	410	894
CP	292	129	252	500	899
SRY		15		5	42

Port Unloads

	05/05	05/04	Week To Date	Last Week
CN	251	451	3,072	2,384
CP	468	434	3,523	3,132
SRY		4	73	42

Age Profile of Loaded Cars Waiting Placement for Unloading

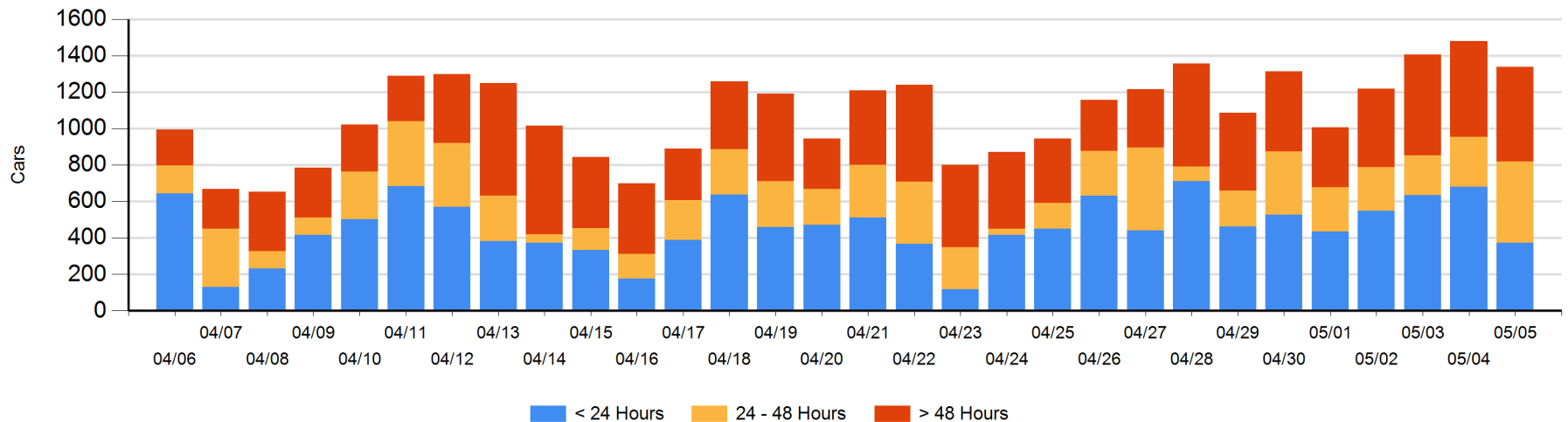
Today

	< 24 Hrs	24 - 48 Hrs	> 48-72 Hrs	> 72 Hrs	Total On Hand
CN	191	312	42	183	728
CP	181	134	55	242	612
SRY					0

Change in Last 24 Hours

	< 24 Hrs	24-48 Hrs	48 - 72 Hrs	> 72 Hrs
CN	-103	269	-75	51
CP	-207	-94	28	-10
SRY				

Loaded Cars on Hand Vancouver Waiting for Placement - Last 30 Days All Railways



Port Terminal Status

Prince Rupert

Daily Activity for 5/5/2019

	Cars Arrived	Cars Received in Interchange	Cars Delivered in Interchange	Cars Placed for Unloading	Loads on Wheels at Destination As of 5/5/2019
CN	345			367	143

Port Unloads

	05/05	05/04	Week To Date	Last Week
CN	253	279	1,652	1,640

Age Profile of Loaded Cars Waiting Placement for Unloading

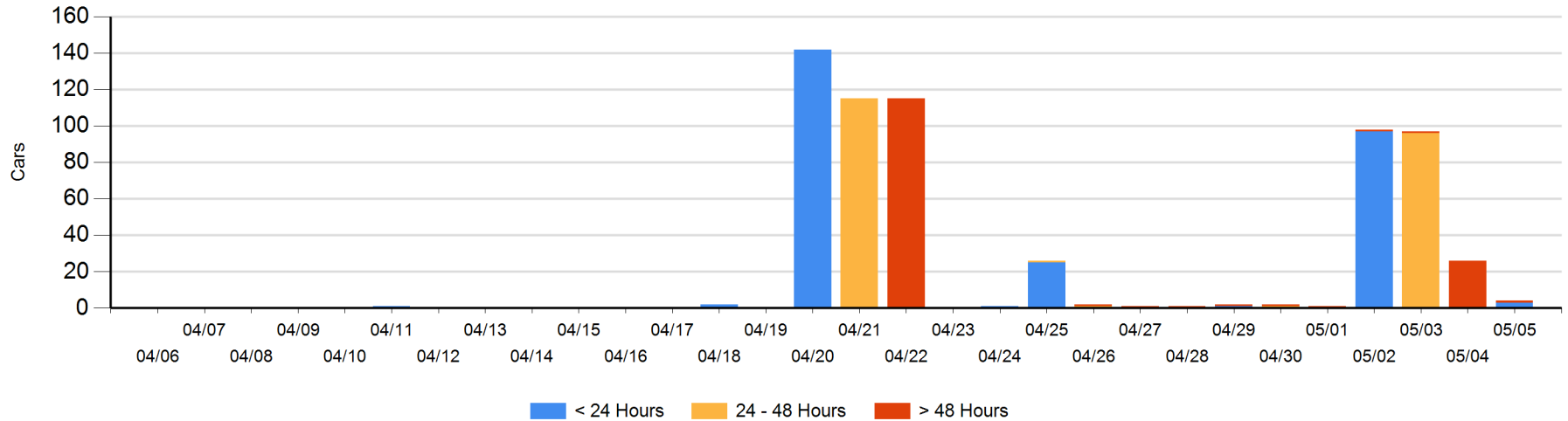
Today

	< 24 Hrs	24 - 48 Hrs	> 48-72 Hrs	> 72 Hrs	Total On Hand
CN	3			1	4

Change in Last 24 Hours

	< 24 Hrs	24-48 Hrs	48 - 72 Hrs	> 72 Hrs
CN	3		-25	0

Loaded Cars on Hand Prince Rupert Waiting for Placement - Last 30 Days All Railways



Port Terminal Status

Thunder Bay

Daily Activity for 5/5/2019

	Cars Arrived	Cars Received in Interchange	Cars Delivered in Interchange	Cars Placed for Unloading	Loads on Wheels at Destination As of 5/5/2019
CN	3			129	346
CP	134			155	665

Port Unloads

	05/05	05/04	Week To Date	Last Week
CN	1	156	644	559
CP	124	187	1,461	1,233

Age Profile of Loaded Cars Waiting Placement for Unloading

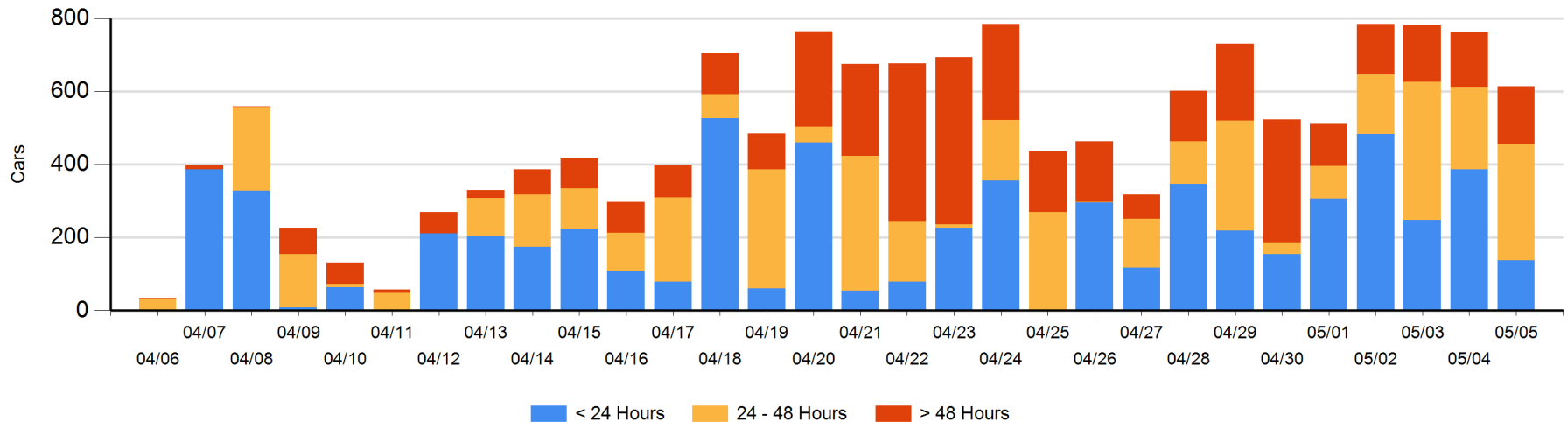
Today

	< 24 Hrs	24 - 48 Hrs	> 48-72 Hrs	> 72 Hrs	Total On Hand
CN	3	67	6	14	90
CP	134	252	77	61	524

Change in Last 24 Hours

	< 24 Hrs	24-48 Hrs	48 - 72 Hrs	> 72 Hrs
CN	-100	-32	-2	8
CP	-149	125	6	-4

Loaded Cars on Hand Thunder Bay Waiting for Placement - Last 30 Days All Railways



Measurement Definitions

Loads on Wheels	<p>Count of loaded rail cars including all rail cars that have been released loaded at origin and have not been reported by the railway as unloaded at destination.</p> <p>Counts include all rail cars (hopper cars and boxcars) moving within a pipeline.</p>
Loads Not Moving	<p>Loaded rail cars for which the railways have not reported a movement event for 48 hours or more whether the rail car is at origin, enroute or at destination.</p>
Port Unloads	<p>Count of rail cars reported by railways as unloaded at the western port destinations of Vancouver, Prince Rupert and Thunder Bay.</p> <p>Unload counts include all rail cars (hopper cars and boxcars) unloaded by all receivers including major port terminals, transloaders and other receivers.</p>
Cars Arrived	<p>Count of rail cars reported as arrived at the destination railway terminal.</p>
Cars Received in Interchange	<p>Count of rail cars received in interchange by each railway within a destination railway terminal. Interchange activity is tracked for the Vancouver and Thunder Bay pipelines as applicable.</p>
Cars Delivered in Interchange	<p>Count of rail cars delivered in interchange by each railway within a destination railway terminal. Interchange activity is tracked for the Vancouver and Thunder Bay pipelines as applicable.</p>
Cars Placed for Unloading	<p>Count of rail cars reported by the railways as placed loaded at the receiver's facility for unloading.</p>
Loads on Wheels at Destination	<p>Count of rail cars that remain under load within the destination railway terminal including rail cars that have been reported as placed for unloading but not yet reported as unloaded.</p>
Waiting Placement for Unloading	<p>Count of rail cars that have been reported as arrived at the destination railway terminal but not reported as placed for unloading by the railway.</p> <p>For the Ports of Vancouver, Prince Rupert and Thunder Bay the count of rail cars waiting placement for unloading is categorized by age – i.e. the elapsed time from arrival at destination to the current report date.</p>