

SPEED READ

- Loads on wheels decreased overnight, reflecting a decline in CN traffic offset by higher CP volumes. On a net basis, volumes fell due to lower traffic across all corridors other than USA/MEX.
- Network fluidity improved overnight, led by a decline in idle car counts on both CN and CP by 4% (-31) and 22% (-239), respectively. The total count of cars for 4+ days on both railways increased 39% (+195) overnight - currently at 699 cars.
- Two days in Week 41 unloads now behind prior week's performance by more than 450 unloads, marking reduced unloads at Vancouver and Prince Rupert offset by improved week over week performance at Thunder Bay.

Loads on Wheels

- Loads on wheels declined 4% (-425) overnight, due to reduced traffic on CN offset by higher traffic on CP - combined total at 9,961, the lowest seen in the last 30 days, and 11% below the trailing 30-day average.
- On a net basis, the decline in loads on wheels reflects reduced traffic across all corridors other than USA/MEX.
- CN volumes decreased 8% (-429) overnight, with reduced traffic in the Vancouver, E. Canada and Prince Rupert corridors offset by higher traffic in the Thunder Bay and USA/MEX corridors. System wide CN loads on wheels currently at 4,970, the lowest seen in the last 30 days, and 17% below the trailing 30-day average.
- CP volumes increased marginally by 1% (+37) overnight, driven by an increase in traffic in the Vancouver and E. Canada corridors offset by a decline in volumes in the Thunder Bay and USA/MEX corridors. CP system wide loads on wheels currently at 4,881 and 3% below the trailing 30-day average.
- Vancouver currently at 6,139, decreased 5% (-320) overnight, now 9% below the trailing 30-day average.
- The Prince Rupert pipeline currently at 1,534, decreased 2% (-33) overnight and have now decreased for the fourth consecutive day, and 6% below the trailing 30-day average.
- Thunder Bay volumes decreased 5% (-69) overnight - currently at 1,428 and 3% below the trailing 30-day average, with 76% of traffic moving on CP.

Hopper Car Rationing

- CN rationed 104 hopper cars in week 39.

Loads Not Moving

- **The count of cars not moving for 48+ hours decreased 14% (-270) overnight, reflecting reduced counts on both CN and CP. Idle car counts currently at 1,676 and 9% below the trailing 30-day average.**
- CN
 - **The count of idle cars for 48+ hours fell 4% (-31) overnight - now at 829 cars.**
 - The number of cars idle for 4+ days increased significantly by 46% (+69) overnight - now at 218 cars.
 - The count of cars not moving for 7+ days decreased 16% (-11) overnight - currently at 56 cars.
 - Vancouver represents 63% of all idle cars.
 - In total 26% of all idle cars are dwelling at origin locations.
- CP
 - **CP idle car counts for 48+ hours decreased 22% (-239) overnight - currently at 847 cars.**
 - The number of cars idle for 4+ days increased 35% (+126) overnight - now at 481 cars.

- The number of cars idle for 7+ days increased for the third consecutive day, up 46% (+77) overnight - currently at 245 cars.
- Vancouver accounts for 68% of all idle cars.
- In total 0% of all idle cars are dwelling at origin locations.

Port Performance

- CN and CP reported a total of 1,266 cars unloaded at the three major ports, now 2% below the trailing 30-day average. Two days in Week 41 unloads now behind last week's pace by more than 450 unloads, marking reduced unloads at Vancouver and Prince Rupert offset by higher unloads at Thunder Bay.
- Vancouver
 - 800 unloads reported by CN and CP at the Port of Vancouver; CN - 358 and CP - 442. Two days in Week 41 unloads are tracking behind last week's performance by more than 450 unloads.
 - There are more than 1,600 cars on site at Vancouver with 950 cars arriving at the port in the last 24 hours.
 - CN and CP have 1,050 cars in British Columbia en route to Vancouver, with more than 450 cars at Kamloops and west, and 56% of traffic moving on CP.
- Prince Rupert
 - Prince Rupert reported 162 unloads, now behind last week's unloads after two days by more than 50 unloads.
 - Loads on wheels now above 1,000 cars - currently at 1,534 cars.
 - There are more than 500 cars west of Jasper en route to Prince Rupert.
 - There are 150 cars on site at Prince Rupert with more than 100 cars arriving at the port in the last 24 hours.
- Thunder Bay
 - 304 unloads were reported at Thunder Bay yesterday. Two days in Week 41 unloads are tracking ahead of last week's pace by more than 50 unloads.
 - There are 650 cars on site at Thunder Bay with 200 cars arriving at the port in the prior 24 hours.
 - There are 450 cars en route to Thunder Bay from Winnipeg and east.

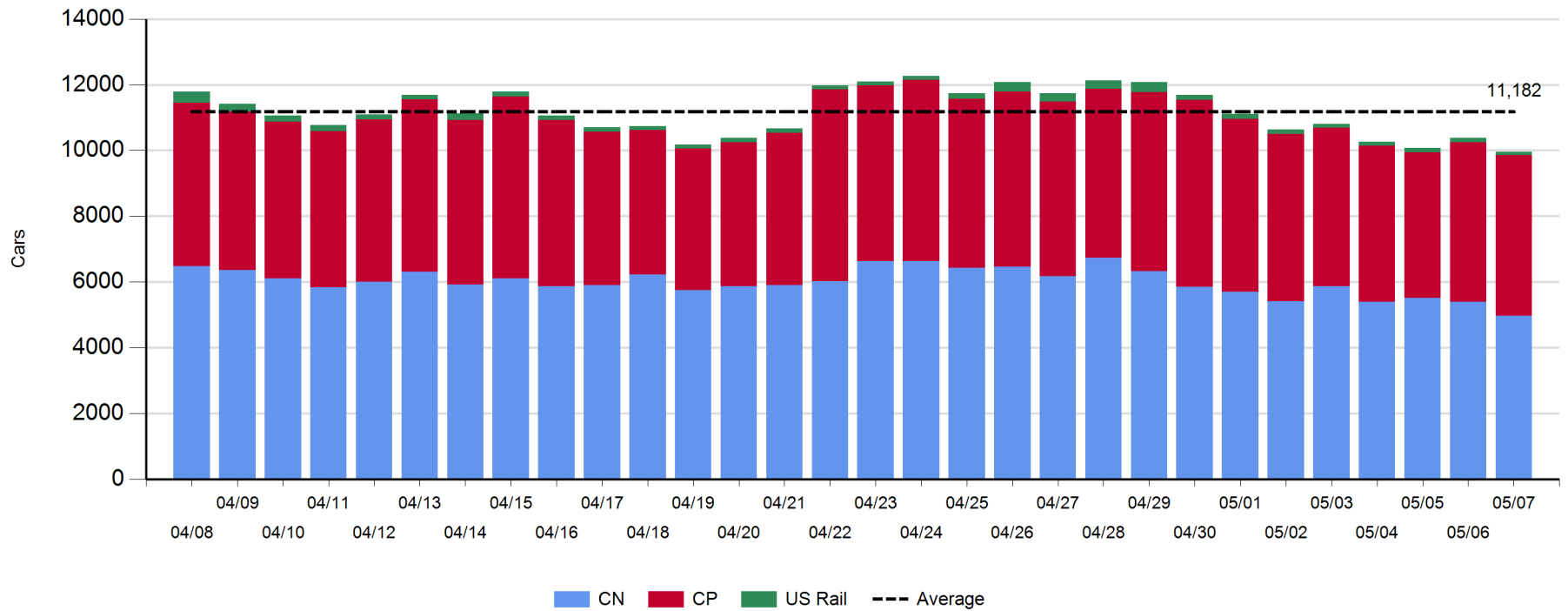
Daily Loads on Wheels - 5/7/2019

| | E Canada | Prince Rupert | Thunder Bay | USA/MEX | Vancouver | Total |
|------------|----------|---------------|-------------|---------|-----------|-------|
| CN | 387 | 1,534 | 337 | 180 | 2,532 | 4,970 |
| CP | 142 | | 1,091 | 76 | 3,572 | 4,881 |
| Short Line | 2 | | | | 35 | 37 |
| US Rail | | | | 73 | | 73 |
| | 531 | 1,534 | 1,428 | 329 | 6,139 | 9,961 |

Change in Loads on Wheels - Prior 24 Hours

| | E Canada | Prince Rupert | Thunder Bay | USA/MEX | Vancouver | Total |
|------------|----------|---------------|-------------|---------|-----------|-------|
| CN | -43 | -33 | 49 | 39 | -441 | -429 |
| CP | 23 | | -118 | -6 | 138 | 37 |
| Short Line | -10 | | | | -17 | -27 |
| US Rail | | | | -6 | | -6 |
| | -30 | -33 | -69 | 27 | -320 | -425 |

Loads on Wheels - Prior 30 Days

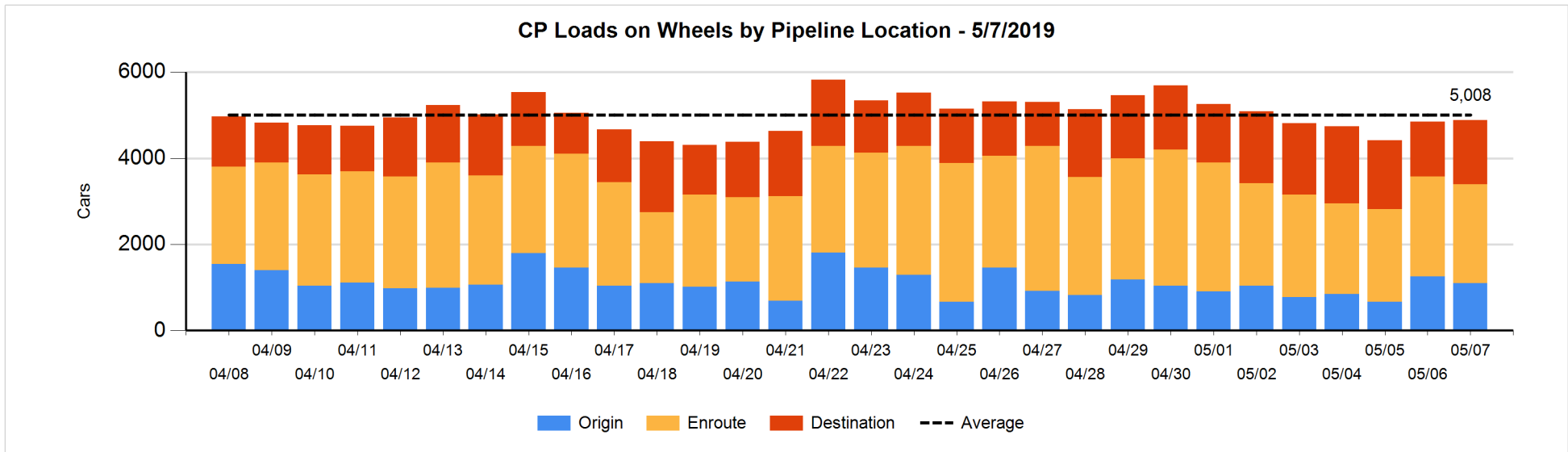
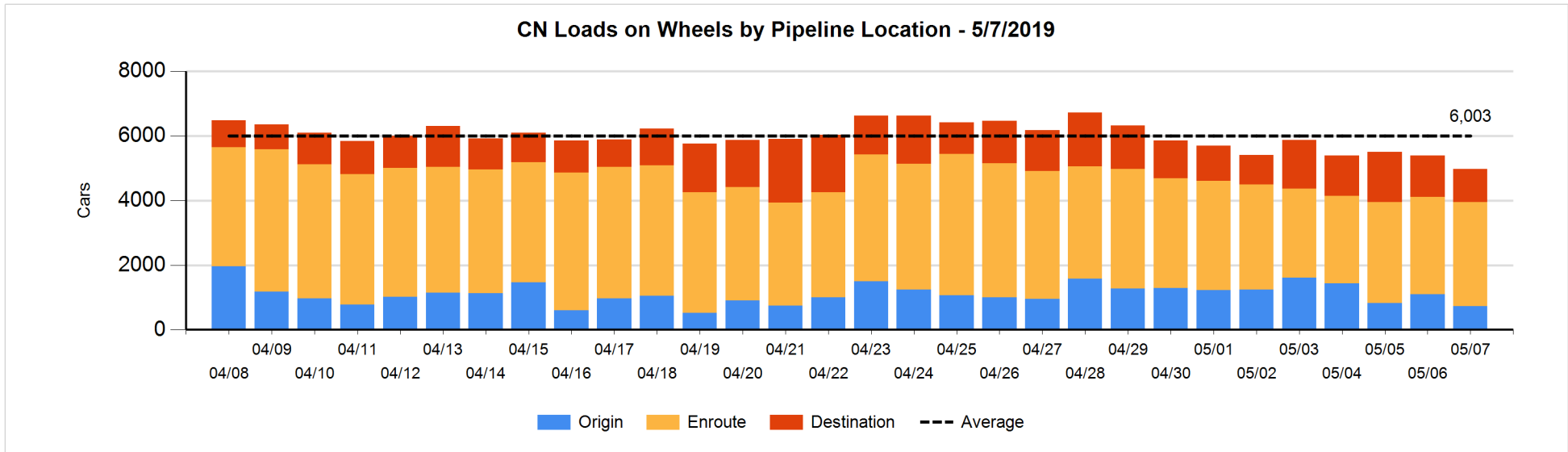


Daily Loads on Wheels By Pipeline Location - 5/7/2019

| | E Canada | Prince Rupert | Thunder Bay | USA/MEX | Vancouver | Total |
|----------------------|----------|---------------|-------------|---------|-----------|-------|
| CN | | | | | | |
| Origin | 26 | 328 | | 5 | 370 | 729 |
| Enroute | 283 | 1,056 | 151 | 149 | 1,581 | 3,220 |
| Destination | 78 | 150 | 186 | 26 | 581 | 1,021 |
| | 387 | 1,534 | 337 | 180 | 2,532 | 4,970 |
| CP | | | | | | |
| Origin | 25 | | 196 | 2 | 871 | 1,094 |
| Enroute | 101 | | 439 | 58 | 1,705 | 2,303 |
| Destination | 16 | | 456 | 16 | 996 | 1,484 |
| | 142 | | 1,091 | 76 | 3,572 | 4,881 |
| US Rail / Short Line | | | | | | |
| Origin | | | | | | |
| Enroute | | | | 53 | | 53 |
| Destination | 2 | | | 20 | 35 | 57 |
| | 2 | | | 73 | 35 | 110 |

Change in Daily Loads on Wheels By Pipeline Location - Prior 24 Hours

| | E Canada | Prince Rupert | Thunder Bay | USA/MEX | Vancouver | Total |
|----------------------|----------|---------------|-------------|---------|-----------|-------|
| CN | | | | | | |
| Origin | 26 | -83 | | -24 | -282 | -363 |
| Enroute | -12 | 93 | 3 | 64 | 62 | 210 |
| Destination | -57 | -43 | 46 | -1 | -221 | -276 |
| | -43 | -33 | 49 | 39 | -441 | -429 |
| CP | | | | | | |
| Origin | 10 | | 33 | -50 | -155 | -162 |
| Enroute | 12 | | -11 | 50 | -73 | -22 |
| Destination | 1 | | -140 | -6 | 366 | 221 |
| | 23 | | -118 | -6 | 138 | 37 |
| US Rail / Short Line | | | | | | |
| Origin | | | | | | |
| Enroute | | | | -10 | | -10 |
| Destination | -10 | | | 4 | -17 | -23 |
| | -10 | | | -6 | -17 | -33 |

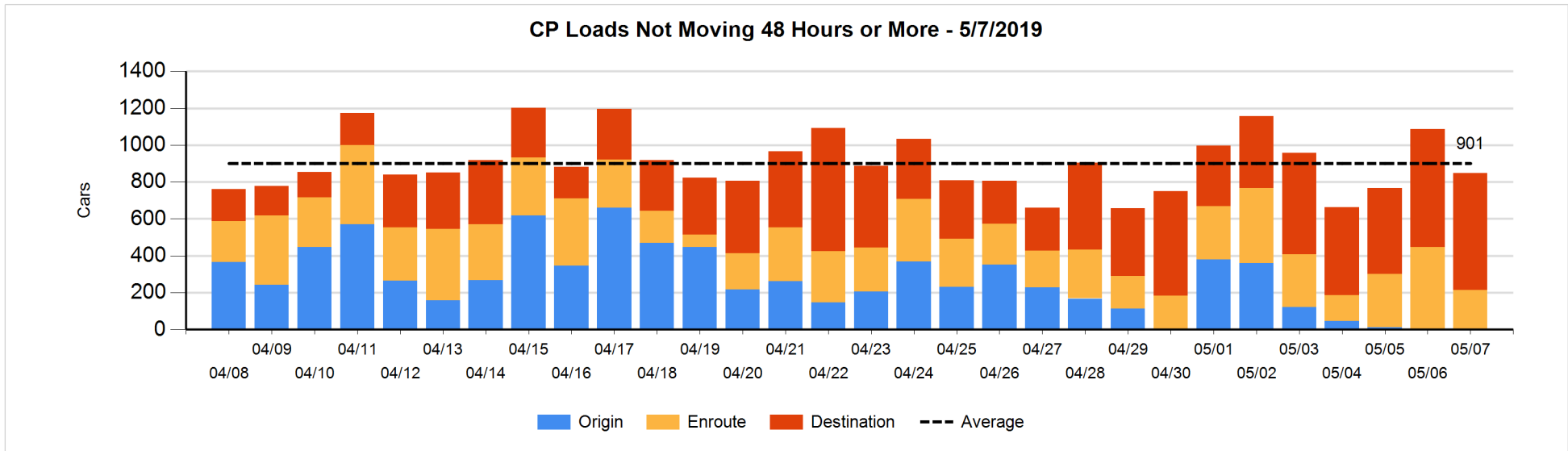
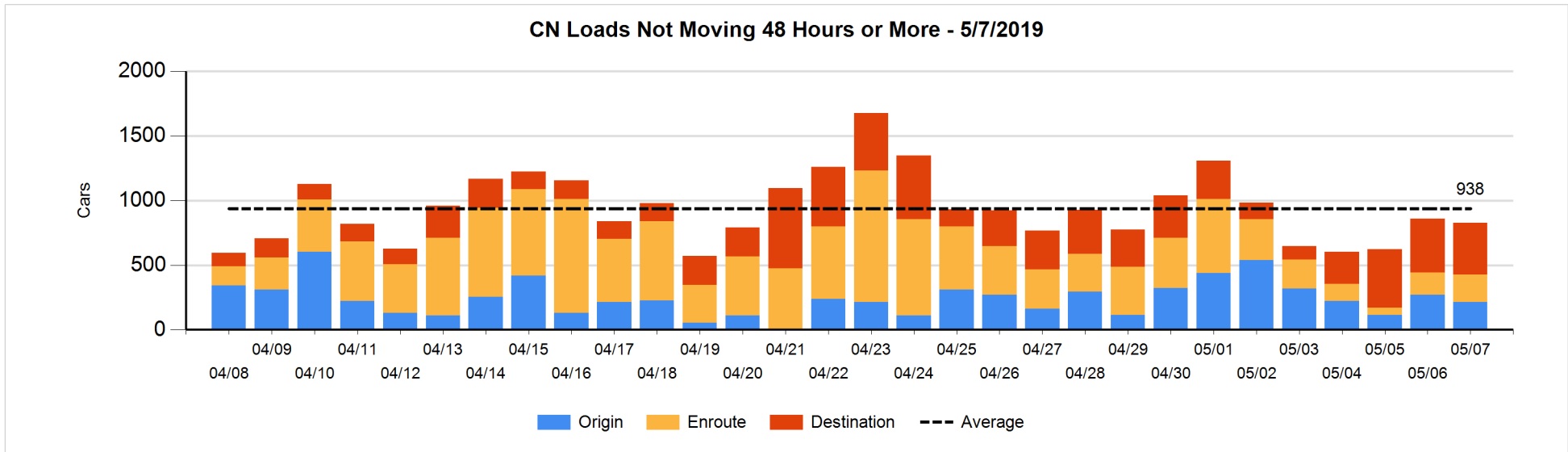


Loads Not Moving 48 Hours or More - 5/7/2019

| | E Canada | Prince Rupert | Thunder Bay | USA/MEX | Vancouver | Total |
|----------------------|----------|---------------|-------------|---------|-----------|-------|
| CN | | | | | | |
| Origin | | 104 | | 1 | 110 | 215 |
| Enroute | 8 | 14 | 1 | 35 | 152 | 210 |
| Destination | 64 | | 74 | 7 | 259 | 404 |
| | 72 | 118 | 75 | 43 | 521 | 829 |
| CP | | | | | | |
| Origin | | | | | 4 | 4 |
| Enroute | | | 4 | 2 | 204 | 210 |
| Destination | 1 | | 252 | 11 | 369 | 633 |
| | 1 | | 256 | 13 | 577 | 847 |
| US Rail / Short Line | | | | | | |
| Origin | | | | | | |
| Enroute | | | | 23 | | 23 |
| Destination | 1 | | | 6 | 19 | 26 |
| | 1 | | | 29 | 19 | 49 |

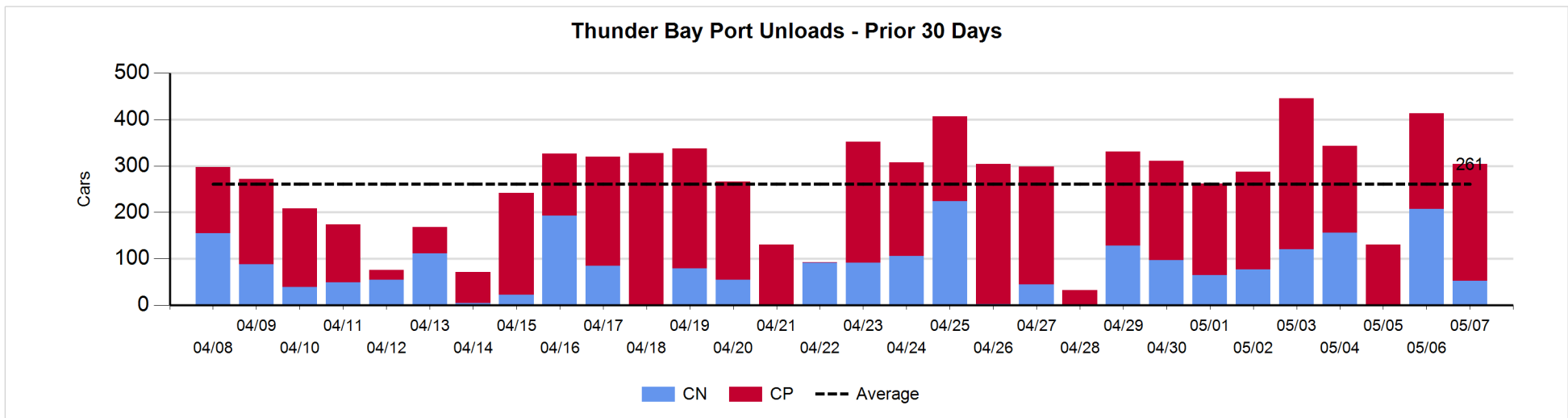
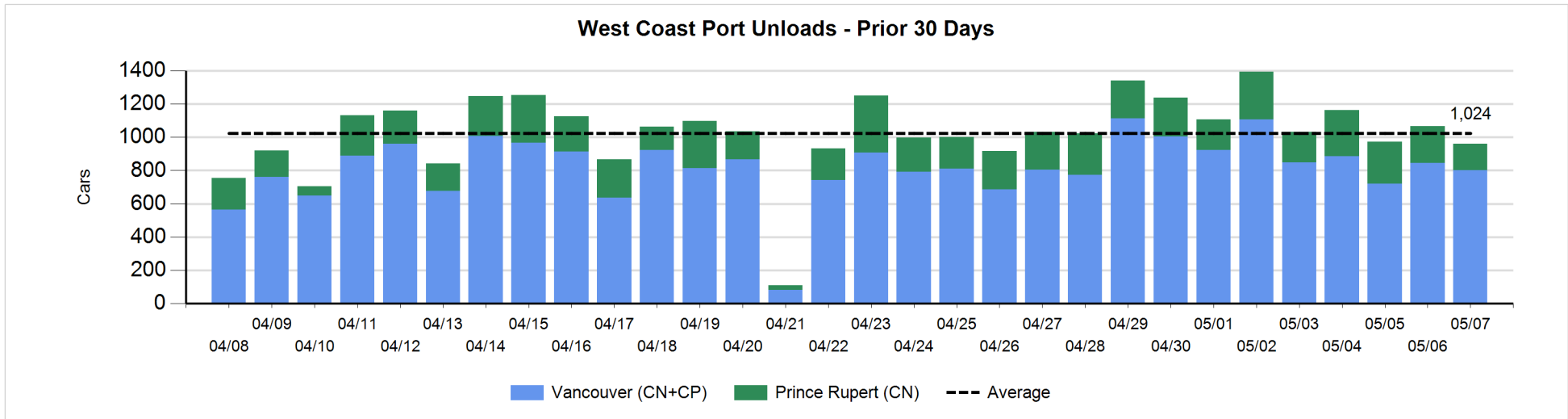
Change in Loads Not Moving 48 Hours or More - 5/7/2019

| | E Canada | Prince Rupert | Thunder Bay | USA/MEX | Vancouver | Total |
|----------------------|----------|---------------|-------------|---------|-----------|-------|
| CN | | | | | | |
| Origin | | 2 | | 0 | -59 | -57 |
| Enroute | 4 | -8 | 1 | 0 | 43 | 40 |
| Destination | -66 | -1 | 9 | -4 | 48 | -14 |
| | -62 | -7 | 10 | -4 | 32 | -31 |
| CP | | | | | | |
| Origin | | | | | 0 | 0 |
| Enroute | -3 | | 3 | -2 | -231 | -233 |
| Destination | 1 | | -157 | -6 | 156 | -6 |
| | -2 | | -154 | -8 | -75 | -239 |
| US Rail / Short Line | | | | | | |
| Origin | | | | | | |
| Enroute | | | | 3 | | 3 |
| Destination | 0 | | | 0 | -1 | -1 |
| | 0 | | | 3 | -1 | 2 |



Port Unloads - 5/7/2019

| | Prince Rupert | Vancouver | West Coast Total | Thunder Bay | Total |
|----|---------------|-----------|------------------|-------------|-------|
| CN | 162 | 358 | 520 | 52 | 572 |
| CP | | 442 | 442 | 252 | 694 |
| | 162 | 800 | 962 | 304 | 1,266 |



Port Terminal Status

Vancouver

Daily Activity for 5/7/2019

| | Cars Arrived | Cars Received in Interchange | Cars Delivered in Interchange | Cars Placed for Unloading | Loads on Wheels at Destination As of 5/7/2019 |
|-----|--------------|------------------------------|-------------------------------|---------------------------|-----------------------------------------------|
| CN | 365 | 213 | 127 | 252 | 581 |
| CP | 581 | 127 | 213 | 400 | 996 |
| SRY | | | | 16 | 35 |

Port Unloads

| | 05/07 | 05/06 | Week To Date | Last Week |
|-----|-------|-------|--------------|-----------|
| CN | 358 | 461 | 819 | 3,072 |
| CP | 442 | 384 | 826 | 3,523 |
| SRY | 25 | 16 | 41 | 73 |

Age Profile of Loaded Cars Waiting Placement for Unloading

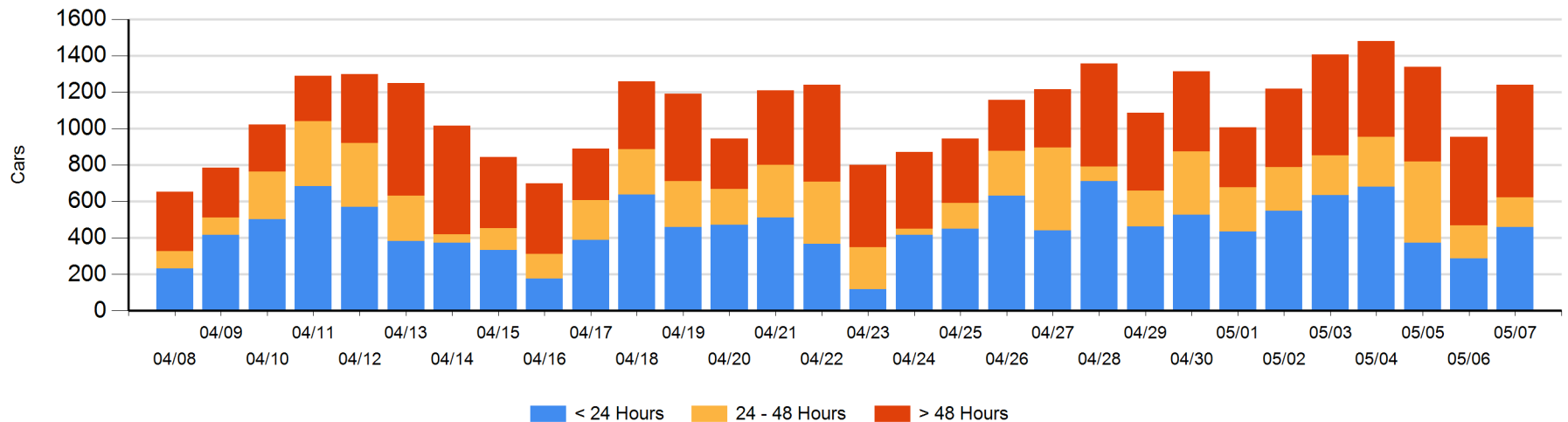
Today

| | < 24 Hrs | 24 - 48 Hrs | > 48-72 Hrs | > 72 Hrs | Total On Hand |
|-----|----------|-------------|-------------|----------|---------------|
| CN | 327 | 43 | 57 | 210 | 637 |
| CP | 132 | 119 | 126 | 225 | 602 |
| SRY | | | | | 0 |

Change in Last 24 Hours

| | < 24 Hrs | 24-48 Hrs | 48 - 72 Hrs | > 72 Hrs |
|-----|----------|-----------|-------------|----------|
| CN | 159 | -14 | -99 | 121 |
| CP | 13 | -7 | 106 | 5 |
| SRY | | | | |

Loaded Cars on Hand Vancouver Waiting for Placement - Last 30 Days All Railways



Port Terminal Status

Prince Rupert

Daily Activity for 5/7/2019

| | Cars Arrived | Cars Received in Interchange | Cars Delivered in Interchange | Cars Placed for Unloading | Loads on Wheels at Destination As of 5/7/2019 |
|----|--------------|------------------------------|-------------------------------|---------------------------|-----------------------------------------------|
| CN | 119 | | | 119 | 150 |

Port Unloads

| | 05/07 | 05/06 | Week To Date | Last Week |
|----|-------|-------|--------------|-----------|
| CN | 162 | 222 | 384 | 1,652 |

Age Profile of Loaded Cars Waiting Placement for Unloading

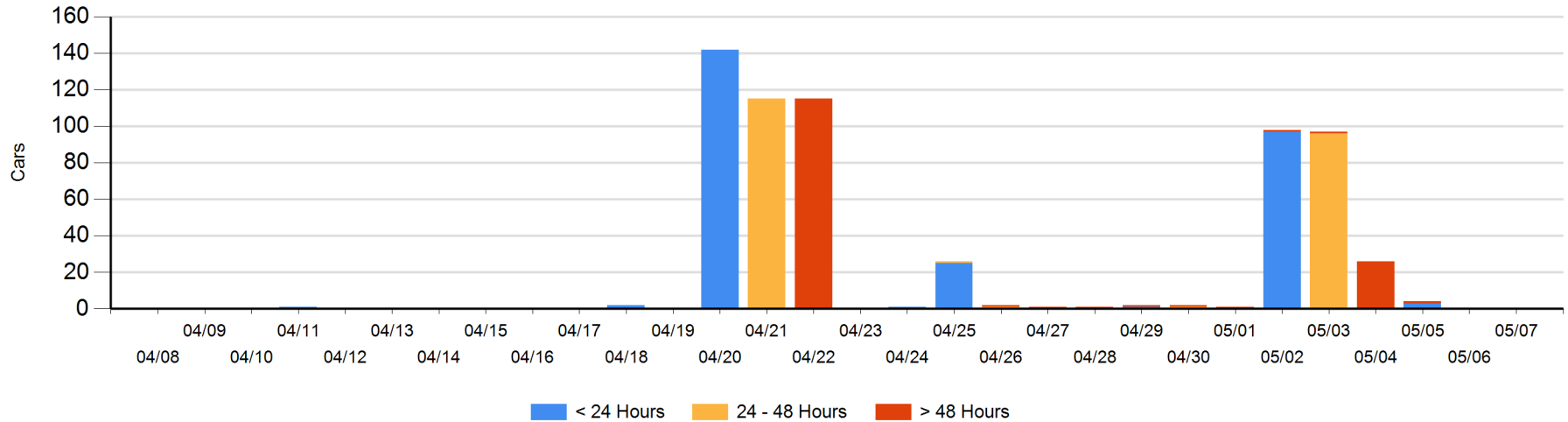
Today

| | < 24 Hrs | 24 - 48 Hrs | > 48-72 Hrs | > 72 Hrs | Total On Hand |
|----|----------|-------------|-------------|----------|---------------|
| CN | | | | | 0 |

Change in Last 24 Hours

| | < 24 Hrs | 24-48 Hrs | 48 - 72 Hrs | > 72 Hrs |
|----|----------|-----------|-------------|----------|
| CN | | | | |

Loaded Cars on Hand Prince Rupert Waiting for Placement - Last 30 Days All Railways



Port Terminal Status

Thunder Bay

Daily Activity for 5/7/2019

| | Cars Arrived | Cars Received in Interchange | Cars Delivered in Interchange | Cars Placed for Unloading | Loads on Wheels at Destination As of 5/7/2019 |
|----|--------------|------------------------------|-------------------------------|---------------------------|-----------------------------------------------|
| CN | 98 | | | 42 | 186 |
| CP | 112 | | | 264 | 456 |

Port Unloads

| | 05/07 | 05/06 | Week To Date | Last Week |
|----|-------|-------|--------------|-----------|
| CN | 52 | 207 | 259 | 644 |
| CP | 252 | 206 | 458 | 1,466 |

Age Profile of Loaded Cars Waiting Placement for Unloading

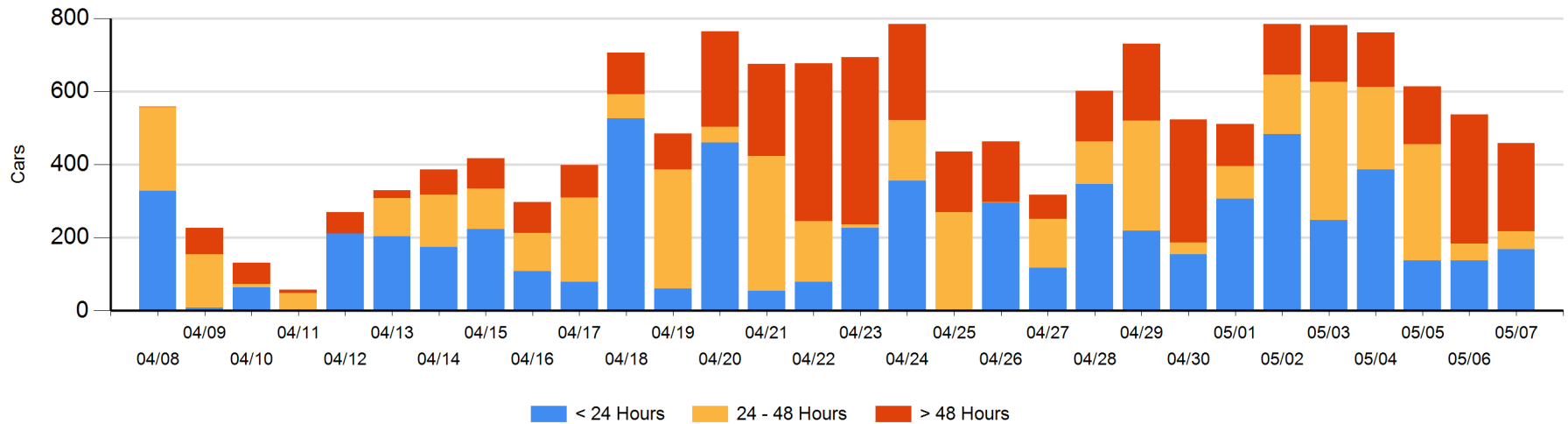
Today

| | < 24 Hrs | 24 - 48 Hrs | > 48-72 Hrs | > 72 Hrs | Total On Hand |
|----|----------|-------------|-------------|----------|---------------|
| CN | 56 | 1 | 3 | | 60 |
| CP | 112 | 48 | 43 | 195 | 398 |

Change in Last 24 Hours

| | < 24 Hrs | 24-48 Hrs | 48 - 72 Hrs | > 72 Hrs |
|----|----------|-----------|-------------|----------|
| CN | 55 | -2 | 3 | |
| CP | -25 | 5 | -177 | 62 |

Loaded Cars on Hand Thunder Bay Waiting for Placement - Last 30 Days All Railways



Measurement Definitions

| | |
|---------------------------------|-----------------------------------------------------------------------------------------------------------------------------------------------------------------------------------------------------------------------------------------------------------------------------------------------------------------------------------------------------------------------------------------|
| Loads on Wheels | <p>Count of loaded rail cars including all rail cars that have been released loaded at origin and have not been reported by the railway as unloaded at destination.</p> <p>Counts include all rail cars (hopper cars and boxcars) moving within a pipeline.</p> |
| Loads Not Moving | <p>Loaded rail cars for which the railways have not reported a movement event for 48 hours or more whether the rail car is at origin, enroute or at destination.</p> |
| Port Unloads | <p>Count of rail cars reported by railways as unloaded at the western port destinations of Vancouver, Prince Rupert and Thunder Bay.</p> <p>Unload counts include all rail cars (hopper cars and boxcars) unloaded by all receivers including major port terminals, transloaders and other receivers.</p> |
| Cars Arrived | <p>Count of rail cars reported as arrived at the destination railway terminal.</p> |
| Cars Received in Interchange | <p>Count of rail cars received in interchange by each railway within a destination railway terminal. Interchange activity is tracked for the Vancouver and Thunder Bay pipelines as applicable.</p> |
| Cars Delivered in Interchange | <p>Count of rail cars delivered in interchange by each railway within a destination railway terminal. Interchange activity is tracked for the Vancouver and Thunder Bay pipelines as applicable.</p> |
| Cars Placed for Unloading | <p>Count of rail cars reported by the railways as placed loaded at the receiver's facility for unloading.</p> |
| Loads on Wheels at Destination | <p>Count of rail cars that remain under load within the destination railway terminal including rail cars that have been reported as placed for unloading but not yet reported as unloaded.</p> |
| Waiting Placement for Unloading | <p>Count of rail cars that have been reported as arrived at the destination railway terminal but not reported as placed for unloading by the railway.</p> <p>For the Ports of Vancouver, Prince Rupert and Thunder Bay the count of rail cars waiting placement for unloading is categorized by age – i.e. the elapsed time from arrival at destination to the current report date.</p> |