

SPEED READ

- Loads on wheels decreased overnight, marking a decline in CN volumes offset by higher CP volumes. On a net basis, volumes fell due to lower traffic in the Vancouver, Thunder Bay and E. Canada corridors offset by higher volumes in the Prince Rupert and USA/MEX corridors.
- Network fluidity deteriorated overnight, led by a rise in idle car counts on CP by 24% (+207) offset by a decline in idle car counts on CN by 19% (-148). The total count of cars for 4+ days on both railways decreased 10% (-67) overnight - currently at 589 cars.
- Three days in Week 41 unloads now behind prior week's performance by 500 unloads, reflecting lower unloads at Vancouver and Prince Rupert offset by improved week over week performance at Thunder Bay.

Loads on Wheels

- Loads on wheels decreased 3% (-347) overnight, due to lower traffic on CN offset by higher volumes on CP - combined total at 9,724, the lowest seen in the last 30 days, and 13% below the trailing 30-day average.
- On a net basis, the decline in loads on wheels indicates lower traffic in the Vancouver, Thunder Bay and E. Canada corridors offset by higher volumes in the Prince Rupert and USA/MEX corridors.
- CN volumes decreased for the third consecutive day, down 9% (-468) overnight, with lower volumes in the Vancouver, Thunder Bay and E. Canada corridors offset by higher traffic in the Prince Rupert and USA/MEX corridors. System wide CN loads on wheels currently at 4,509, the lowest seen in the last 30 days, and 24% below the trailing 30-day average.
- CP volumes increased 2% (+121) overnight and have now increased for the third consecutive day, driven by a rise in volumes across all corridors other than USA/MEX. CP system wide loads on wheels currently at 5,105 and 2% above the trailing 30-day average.
- Vancouver now at 6,009, decreased 4% (-240) overnight, now 11% below the trailing 30-day average.
- The Prince Rupert pipeline currently at 1,580, increased 3% (+46) overnight, and 3% below the trailing 30-day average.
- Thunder Bay volumes declined significantly by 10% (-143) overnight and have now decreased for the third consecutive day - now at 1,285 and 14% below the trailing 30-day average, with 86% of traffic moving on CP.

Hopper Car Rationing

- CN rationed 104 hopper cars in week 39.

Loads Not Moving

- **The count of cars not moving for 48+ hours increased 4% (+59) overnight, reflecting higher counts on CP offset by lower counts on CN. Idle car counts currently at 1,692 and 9% below the trailing 30-day average.**
- CN
 - **The count of idle cars for 48+ hours decreased 19% (-148) overnight - currently at 638 cars.**
 - The number of cars idle for 4+ days increased for the third consecutive day, up 44% (+77) overnight - now at 252 cars.
 - The count of cars not moving for 7+ days decreased 13% (-7) overnight - now at 49 cars.
 - Vancouver represents 49% of all idle cars.
 - In total 33% of all idle cars are dwelling at origin locations.
- CP
 - **CP idle car counts for 48+ hours increased 24% (+207) overnight - now at 1,054 cars.**
 - The number of cars idle for 4+ days decreased 30% (-144) overnight - presently at 337 cars.

- The number of cars idle for 7+ days declined 44% (-107) overnight - now at 138 cars.
- Vancouver accounts for 83% of all idle cars.
- In total 28% of all idle cars are dwelling at origin locations.

Port Performance

- CN and CP reported a total of 1,343 cars unloaded at the three major ports, now 4% above the trailing 30-day average. Three days in Week 41 unloads now behind last week's pace by 500 unloads, reflecting lower unloads at Vancouver and Prince Rupert offset by higher unloads at Thunder Bay.
- Vancouver
 - 775 unloads reported by CN and CP at the Port of Vancouver; CN - 365 and CP - 410. Three days in Week 41 unloads are tracking behind last week's performance by more than 600 unloads.
 - There are 1,500 cars on site at Vancouver with more than 650 cars arriving at the port in the last 24 hours.
 - CN and CP have fewer than 1,700 cars in British Columbia en route to Vancouver, with more than 550 cars at Kamloops and west, and 60% of traffic moving on CP.
- Prince Rupert
 - Prince Rupert reported 239 unloads, now behind last week's unloads after three days by 26 unloads.
 - Loads on wheels now above 1,000 cars - now at 1,580 cars.
 - There are more than 350 cars west of Jasper en route to Prince Rupert.
 - There are more than 250 cars on site at Prince Rupert with 350 cars arriving at the port in the last 24 hours.
- Thunder Bay
 - 329 unloads were reported at Thunder Bay yesterday. Three days in Week 41 unloads are tracking ahead of last week's pace by 150 unloads.
 - There are fewer than 750 cars on site at Thunder Bay with more than 400 cars arriving at the port in the prior 24 hours.
 - There are 27 cars en route to Thunder Bay from Winnipeg and east.

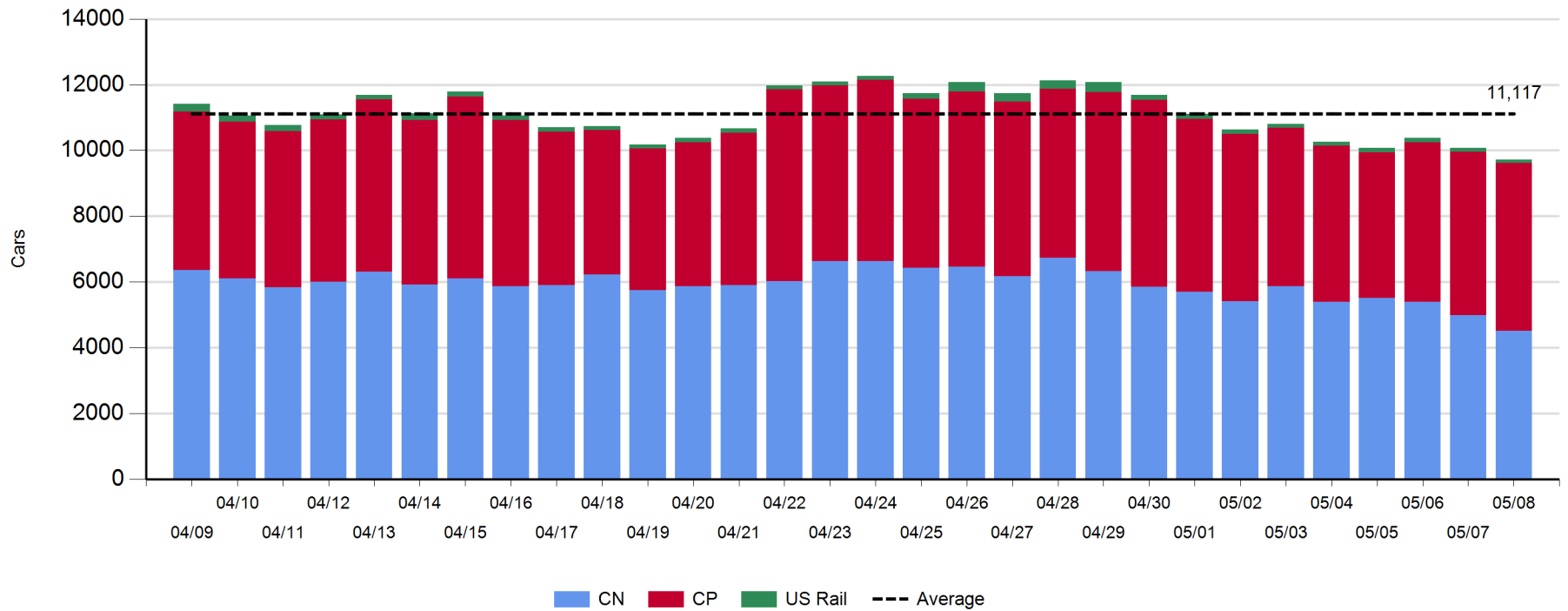
Daily Loads on Wheels - 5/8/2019

	E Canada	Prince Rupert	Thunder Bay	USA/MEX	Vancouver	Total
CN	344	1,580	174	194	2,217	4,509
CP	154		1,111	74	3,766	5,105
Short Line	4				26	30
US Rail				80		80
	502	1,580	1,285	348	6,009	9,724

Change in Loads on Wheels - Prior 24 Hours

	E Canada	Prince Rupert	Thunder Bay	USA/MEX	Vancouver	Total
CN	-49	46	-163	14	-316	-468
CP	18		20	-2	85	121
Short Line	2				-9	-7
US Rail				7		7
	-29	46	-143	19	-240	-347

Loads on Wheels - Prior 30 Days

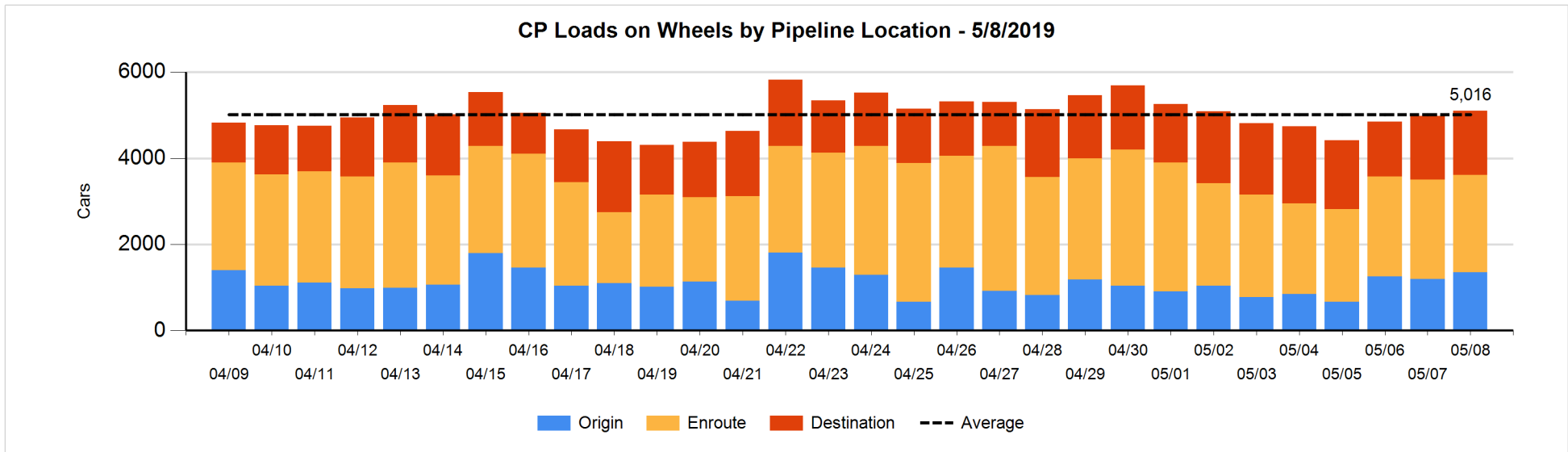
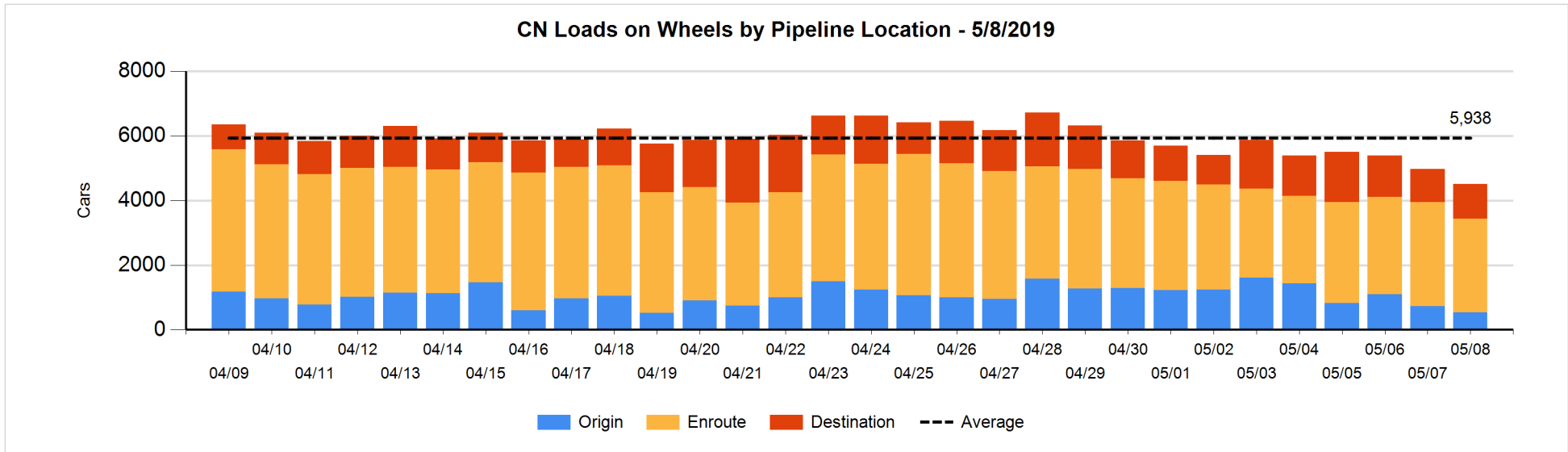


Daily Loads on Wheels By Pipeline Location - 5/8/2019

	E Canada	Prince Rupert	Thunder Bay	USA/MEX	Vancouver	Total
CN						
Origin		403		23	112	538
Enroute	286	912	127	150	1,419	2,894
Destination	58	265	47	21	686	1,077
	344	1,580	174	194	2,217	4,509
CP						
Origin	58		265	2	1,021	1,346
Enroute	89		155	60	1,967	2,271
Destination	7		691	12	778	1,488
	154		1,111	74	3,766	5,105
US Rail / Short Line						
Origin						
Enroute				56		56
Destination	4			24	26	54
	4			80	26	110

Change in Daily Loads on Wheels By Pipeline Location - Prior 24 Hours

	E Canada	Prince Rupert	Thunder Bay	USA/MEX	Vancouver	Total
CN						
Origin	-26	75		18	-258	-191
Enroute	-3	-144	-24	1	-163	-333
Destination	-20	115	-139	-5	105	56
	-49	46	-163	14	-316	-468
CP						
Origin	33		69	0	54	156
Enroute	-6		-284	2	249	-39
Destination	-9		235	-4	-218	4
	18		20	-2	85	121
US Rail / Short Line						
Origin						
Enroute				3		3
Destination	2			4	-9	-3
	2			7	-9	0

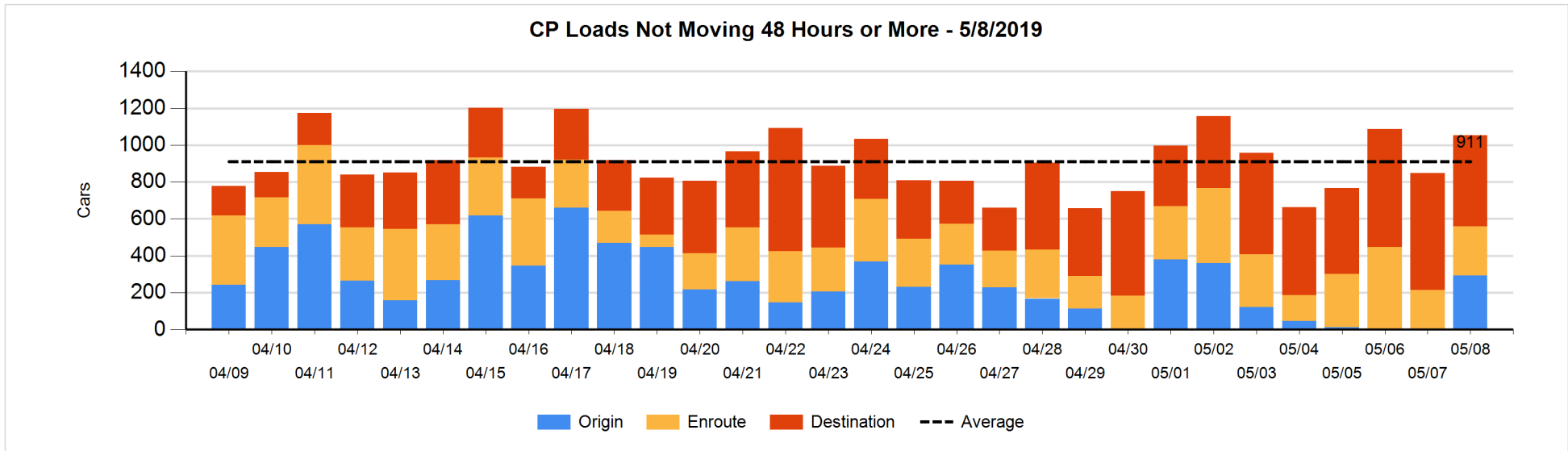
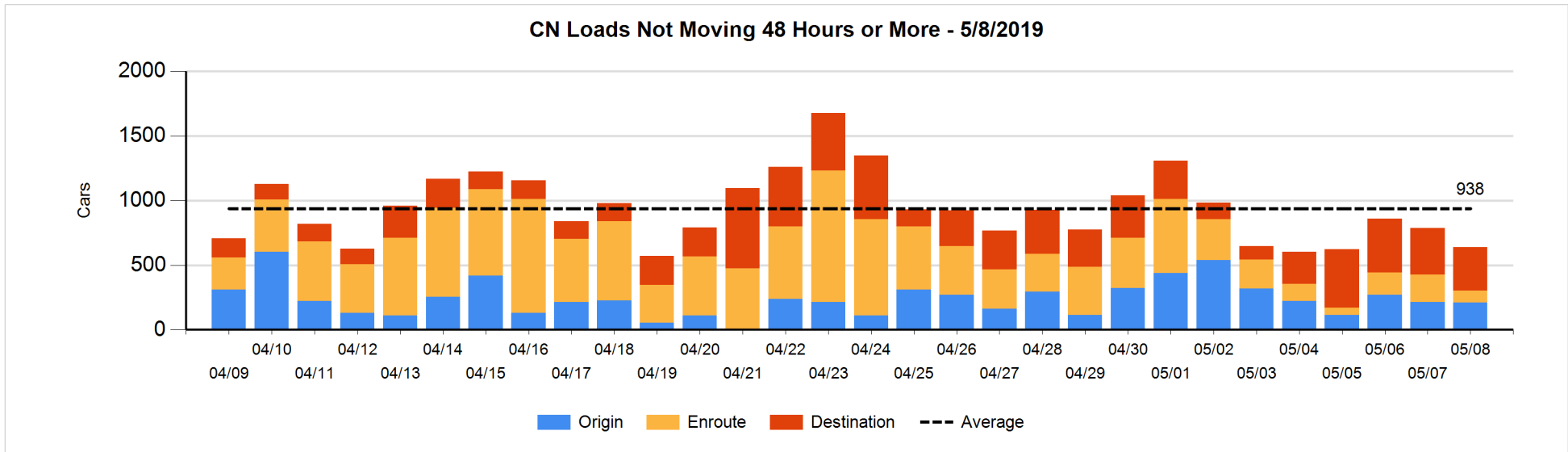


Loads Not Moving 48 Hours or More - 5/8/2019

	E Canada	Prince Rupert	Thunder Bay	USA/MEX	Vancouver	Total
CN						
Origin		105		1	105	211
Enroute	13	17	1	35	24	90
Destination	2	105	41	7	182	337
	15	227	42	43	311	638
CP						
Origin			62		231	293
Enroute			4	2	260	266
Destination			97	12	386	495
			163	14	877	1054
US Rail / Short Line						
Origin						
Enroute				22		22
Destination	1			12	13	26
	1			34	13	48

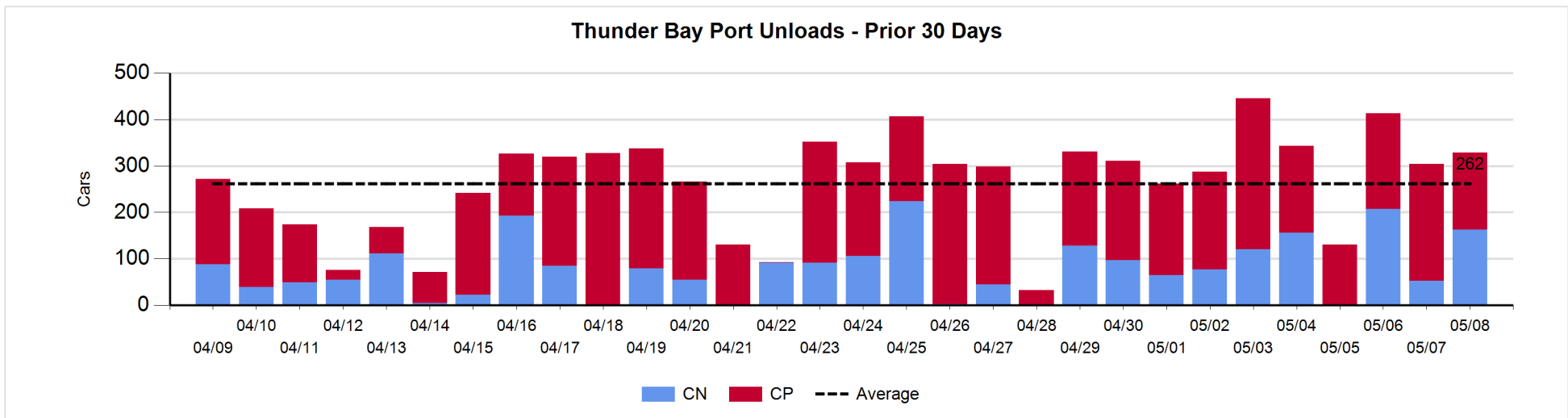
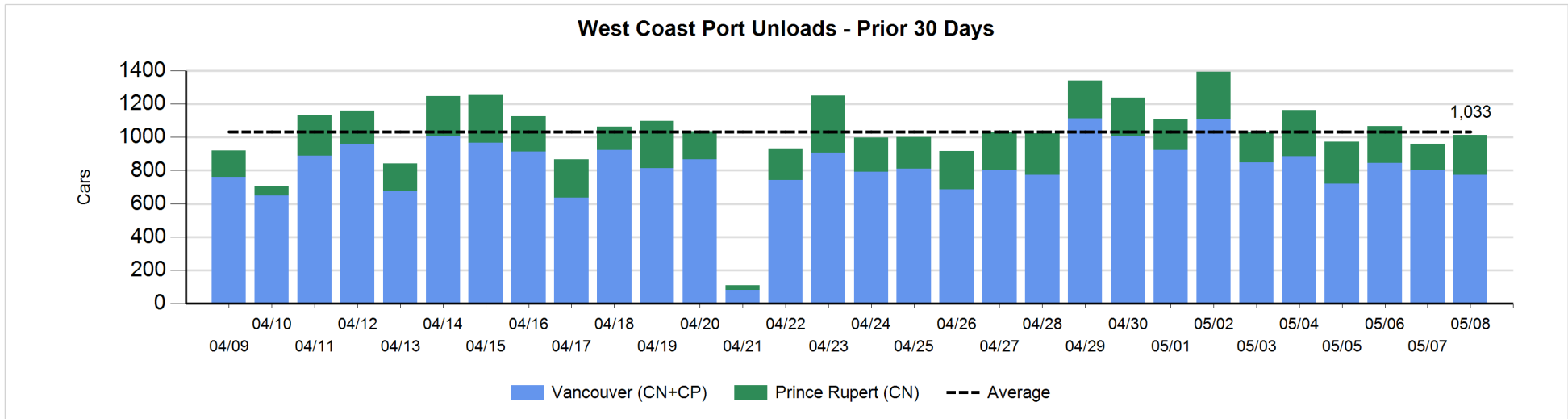
Change in Loads Not Moving 48 Hours or More - 5/8/2019

	E Canada	Prince Rupert	Thunder Bay	USA/MEX	Vancouver	Total
CN						
Origin		1		0	-5	-4
Enroute	5	3	0	0	-128	-120
Destination	-19	105	-33	0	-77	-24
	-14	109	-33	0	-210	-148
CP						
Origin			62		227	289
Enroute			0	0	56	56
Destination	-1		-155	1	17	-138
	-1		-93	1	300	207
US Rail / Short Line						
Origin						
Enroute				-1		-1
Destination	0			6	-6	0
	0			5	-6	-1



Port Unloads - 5/8/2019

	Prince Rupert	Vancouver	West Coast Total	Thunder Bay	Total
CN	239	365	604	163	767
CP		410	410	166	576
	239	775	1,014	329	1,343



Port Terminal Status

Vancouver

Daily Activity for 5/8/2019

	Cars Arrived	Cars Received in Interchange	Cars Delivered in Interchange	Cars Placed for Unloading	Loads on Wheels at Destination As of 5/8/2019
CN	305	111	178	403	686
CP	358	178	111	472	778
SRY				8	26

Port Unloads

	05/08	05/07	Week To Date	Last Week
CN	365	358	1,184	3,072
CP	410	442	1,236	3,523
SRY	15	25	56	73

Age Profile of Loaded Cars Waiting Placement for Unloading

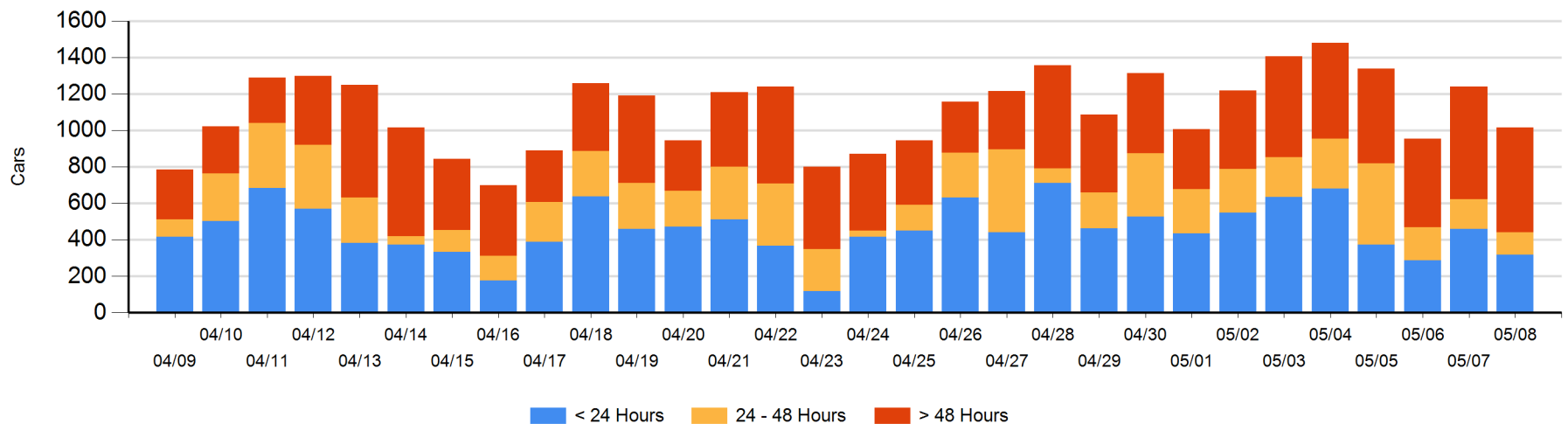
Today

	< 24 Hrs	24 - 48 Hrs	> 48-72 Hrs	> 72 Hrs	Total On Hand
CN	305	37	28	163	533
CP	13	86	118	266	483
SRY					0

Change in Last 24 Hours

	< 24 Hrs	24-48 Hrs	48 - 72 Hrs	> 72 Hrs
CN	-23	-6	-29	-47
CP	-118	-33	-8	41
SRY				

Loaded Cars on Hand Vancouver Waiting for Placement - Last 30 Days All Railways



Port Terminal Status

Prince Rupert

Daily Activity for 5/8/2019

	Cars Arrived	Cars Received in Interchange	Cars Delivered in Interchange	Cars Placed for Unloading	Loads on Wheels at Destination As of 5/8/2019
CN	354			353	265

Port Unloads

	05/08	05/07	Week To Date	Last Week
CN	239	162	623	1,652

Age Profile of Loaded Cars Waiting Placement for Unloading

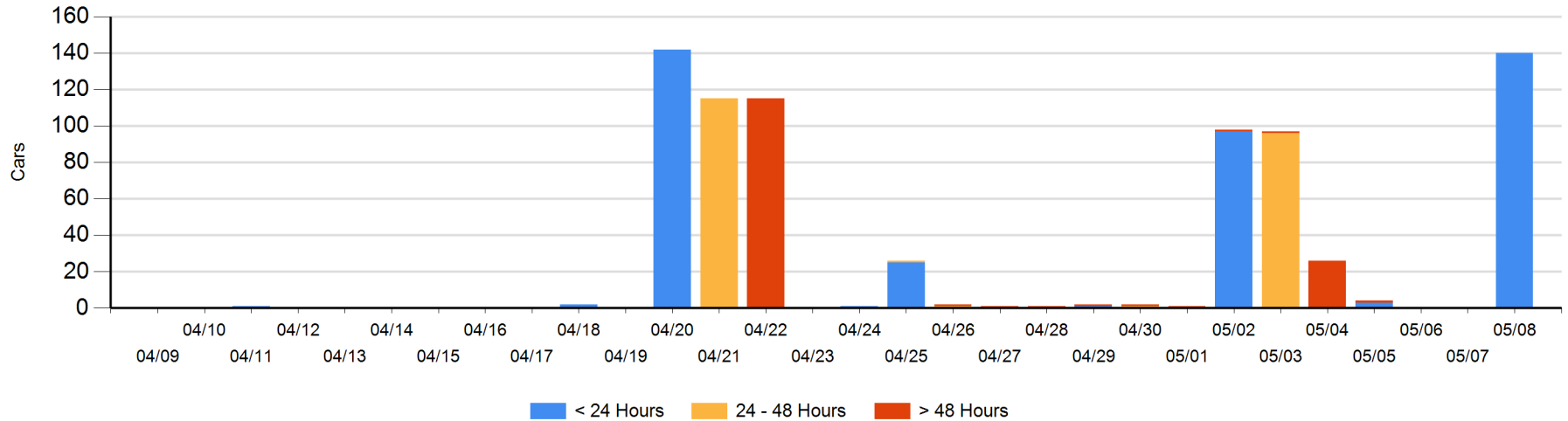
Today

	< 24 Hrs	24 - 48 Hrs	> 48-72 Hrs	> 72 Hrs	Total On Hand
CN	140				140

Change in Last 24 Hours

	< 24 Hrs	24-48 Hrs	48 - 72 Hrs	> 72 Hrs
CN	140			

Loaded Cars on Hand Prince Rupert Waiting for Placement - Last 30 Days All Railways



Port Terminal Status

Thunder Bay

Daily Activity for 5/8/2019

	Cars Arrived	Cars Received in Interchange	Cars Delivered in Interchange	Cars Placed for Unloading	Loads on Wheels at Destination As of 5/8/2019
CN	24			82	47
CP	401			208	691

Port Unloads

	05/08	05/07	Week To Date	Last Week
CN	163	52	422	644
CP	166	252	624	1,466

Age Profile of Loaded Cars Waiting Placement for Unloading

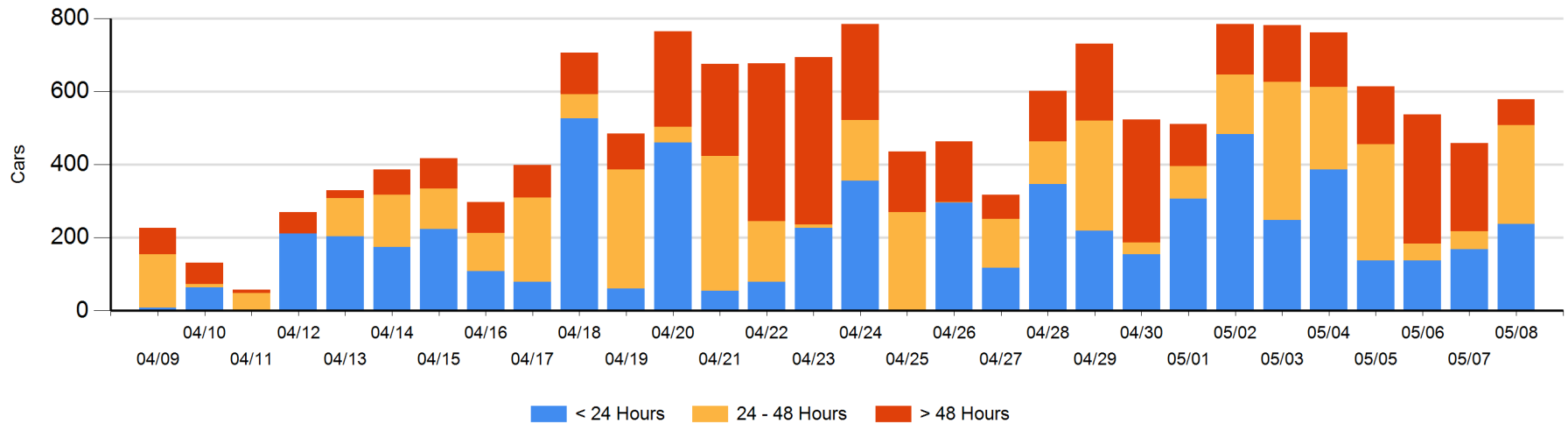
Today

	< 24 Hrs	24 - 48 Hrs	> 48-72 Hrs	> 72 Hrs	Total On Hand
CN				2	2
CP	237	271	29	39	576

Change in Last 24 Hours

	< 24 Hrs	24-48 Hrs	48 - 72 Hrs	> 72 Hrs
CN	-56	-1	-3	2
CP	125	223	-14	-156

Loaded Cars on Hand Thunder Bay Waiting for Placement - Last 30 Days All Railways



Measurement Definitions

Loads on Wheels	<p>Count of loaded rail cars including all rail cars that have been released loaded at origin and have not been reported by the railway as unloaded at destination.</p> <p>Counts include all rail cars (hopper cars and boxcars) moving within a pipeline.</p>
Loads Not Moving	<p>Loaded rail cars for which the railways have not reported a movement event for 48 hours or more whether the rail car is at origin, enroute or at destination.</p>
Port Unloads	<p>Count of rail cars reported by railways as unloaded at the western port destinations of Vancouver, Prince Rupert and Thunder Bay.</p> <p>Unload counts include all rail cars (hopper cars and boxcars) unloaded by all receivers including major port terminals, transloaders and other receivers.</p>
Cars Arrived	<p>Count of rail cars reported as arrived at the destination railway terminal.</p>
Cars Received in Interchange	<p>Count of rail cars received in interchange by each railway within a destination railway terminal. Interchange activity is tracked for the Vancouver and Thunder Bay pipelines as applicable.</p>
Cars Delivered in Interchange	<p>Count of rail cars delivered in interchange by each railway within a destination railway terminal. Interchange activity is tracked for the Vancouver and Thunder Bay pipelines as applicable.</p>
Cars Placed for Unloading	<p>Count of rail cars reported by the railways as placed loaded at the receiver's facility for unloading.</p>
Loads on Wheels at Destination	<p>Count of rail cars that remain under load within the destination railway terminal including rail cars that have been reported as placed for unloading but not yet reported as unloaded.</p>
Waiting Placement for Unloading	<p>Count of rail cars that have been reported as arrived at the destination railway terminal but not reported as placed for unloading by the railway.</p> <p>For the Ports of Vancouver, Prince Rupert and Thunder Bay the count of rail cars waiting placement for unloading is categorized by age – i.e. the elapsed time from arrival at destination to the current report date.</p>