

SPEED READ

- Loads on wheels increased overnight, reflecting a rise in both CN and CP volumes. On a net basis, volumes gained due to higher traffic in the Vancouver, Thunder Bay and E. Canada corridors offset by reduced volumes in the Prince Rupert and USA/MEX corridors.
- Network fluidity deteriorated overnight, led by a rise in idle car counts on both CN and CP by 82% (+369) and 50% (+487), respectively. The total count of cars for 4+ days on both railways increased 14% (+107) overnight - currently at 851 cars.
- One day in Week 42 unloads now behind prior week's performance by 450 unloads, reflecting reduced unloads across all three major ports - Vancouver, Thunder Bay and Prince Rupert.

=====

Loads on Wheels

- Loads on wheels increased 2% (+215) overnight, due to higher traffic on both CN and CP - combined total at 9,304 and 14% below the trailing 30-day average.
- On a net basis, the rise in loads on wheels reflects higher traffic in the Vancouver, Thunder Bay and E. Canada corridors offset by reduced volumes in the Prince Rupert and USA/MEX corridors.
- CN volumes increased 4% (+185) overnight, with higher volumes in the Vancouver, E. Canada and Thunder Bay corridors offset by reduced volumes in the Prince Rupert and USA/MEX corridors. System wide CN loads on wheels currently at 4,468 and 21% below the trailing 30-day average.
- CP volumes increased marginally by 1% (+47) overnight, driven by a rise in traffic in the Thunder Bay corridor offset by a decline in traffic in the Vancouver, USA/MEX and E. Canada corridors. CP system wide loads on wheels currently at 4,655 and 7% below the trailing 30-day average.
- Vancouver currently at 5,829, increased 4% (+248) overnight, now 10% below the trailing 30-day average.
- The Prince Rupert pipeline currently at 1,292, the lowest seen in the last 30 days, decreased significantly by 12% (-171) overnight, and 21% below the trailing 30-day average.
- Thunder Bay volumes gained significantly by 13% (+165) overnight - presently at 1,420 and 9% below the trailing 30-day average, with 56% of traffic moving on CP.

Hopper Car Rationing

- CN rationed 104 hopper cars in week 40. No rationing reported to date for week 41.

Loads Not Moving

- **The count of cars not moving for 48+ hours increased significantly by 60% (+856) overnight, marking higher counts on both CN and CP. Idle car counts currently at 2,282 and 24% above the trailing 30-day average.**
- CN
 - **The count of idle cars for 48+ hours increased significantly by 82% (+369) overnight - presently at 820 cars.**
 - The number of cars idle for 4+ days increased 36% (+73) overnight - presently at 274 cars.
 - The count of cars not moving for 7+ days increased 9% (+5) overnight - currently at 61 cars.
 - Vancouver represents 49% of all idle cars.
 - In total 29% of all idle cars are dwelling at origin locations.
- CP
 - **CP idle car counts for 48+ hours increased significantly by 50% (+487) overnight - currently at 1,462 cars, the highest seen in the last 30 days.**

- The number of cars idle for 4+ days increased 6% (+34) overnight - presently at 577 cars.
- The number of cars idle for 7+ days increased 37% (+123) overnight - currently at 457 cars, the highest seen in the last 30 days.
- Vancouver accounts for 89% of all idle cars.
- In total 31% of all idle cars are dwelling at origin locations.

Port Performance

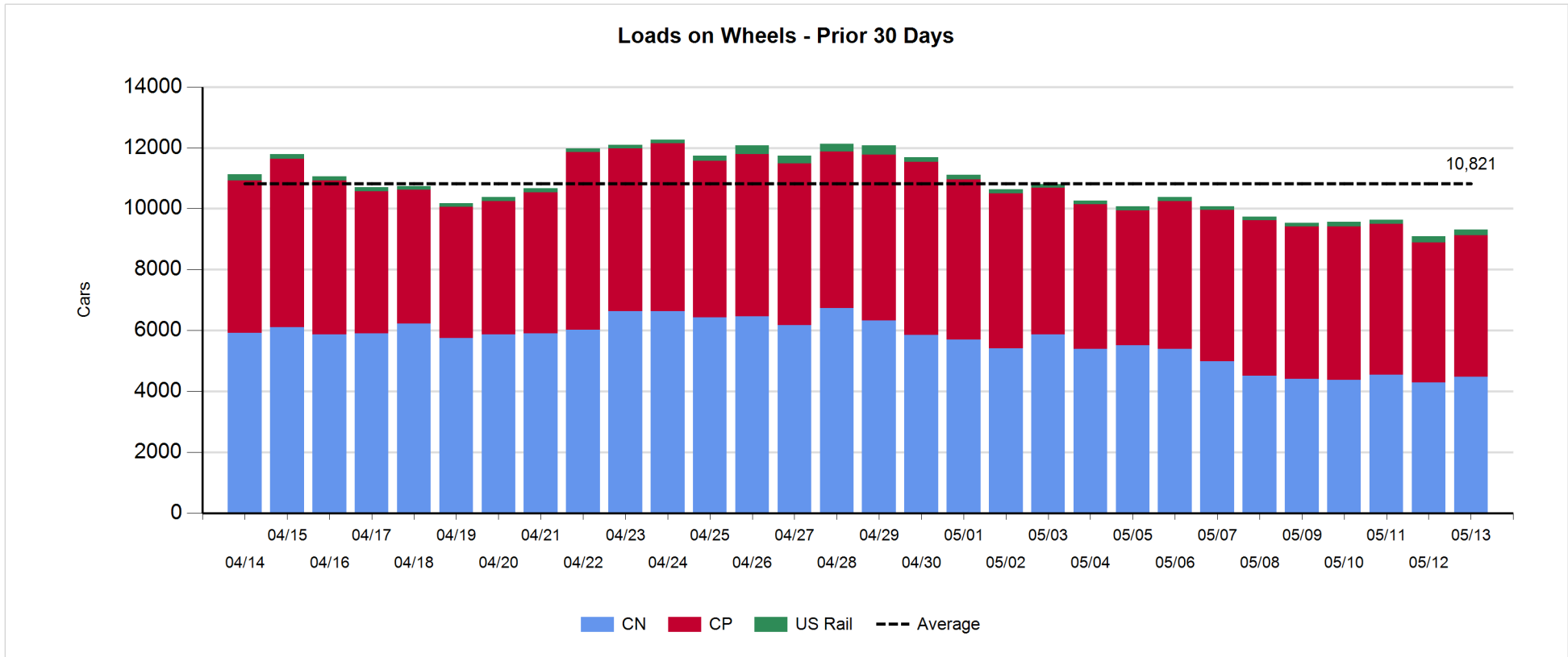
- CN and CP reported a total of 1,034 cars unloaded at the three major ports, now 20% below the trailing 30-day average. One day in Week 42 unloads now behind last week's pace by 450 unloads, reflecting reduced unloads across all three major ports - Vancouver, Thunder Bay and Prince Rupert.
- Vancouver
 - 478 unloads reported by CN and CP at the Port of Vancouver; CN - 180 and CP - 298. One day in Week 42 unloads are tracking behind last week's performance by more than 350 unloads.
 - There are more than 1,800 cars on site at Vancouver with 550 cars arriving at the port in the last 24 hours.
 - CN and CP have more than 1,350 cars in British Columbia en route to Vancouver, with more than 700 cars at Kamloops and west, and 78% of traffic moving on CP.
- Prince Rupert
 - Prince Rupert reported 211 unloads, now behind last week's unloads after one day by 11 unloads.
 - Loads on wheels now above 1,000 cars - presently at 1,292 cars.
 - There are more than 700 cars west of Jasper en route to Prince Rupert.
 - There are 50 cars on site at Prince Rupert with less than 100 cars arriving at the port in the last 24 hours.
- Thunder Bay
 - 345 unloads were reported at Thunder Bay yesterday. One day in Week 42 unloads are tracking behind last week's pace by more than 50 unloads.
 - There are 650 cars on site at Thunder Bay with more than 100 cars arriving at the port in the prior 24 hours.
 - There are more than 200 cars en route to Thunder Bay from Winnipeg and east.

Daily Loads on Wheels - 5/13/2019

	E Canada	Prince Rupert	Thunder Bay	USA/MEX	Vancouver	Total
CN	307	1,292	623	202	2,044	4,468
CP	101		797	33	3,724	4,655
Short Line	7				61	68
US Rail				113		113
	415	1,292	1,420	348	5,829	9,304

Change in Loads on Wheels - Prior 24 Hours

	E Canada	Prince Rupert	Thunder Bay	USA/MEX	Vancouver	Total
CN	41	-171	7	-18	326	185
CP	-20		158	-27	-64	47
Short Line	-3				-14	-17
US Rail				0		0
	18	-171	165	-45	248	215

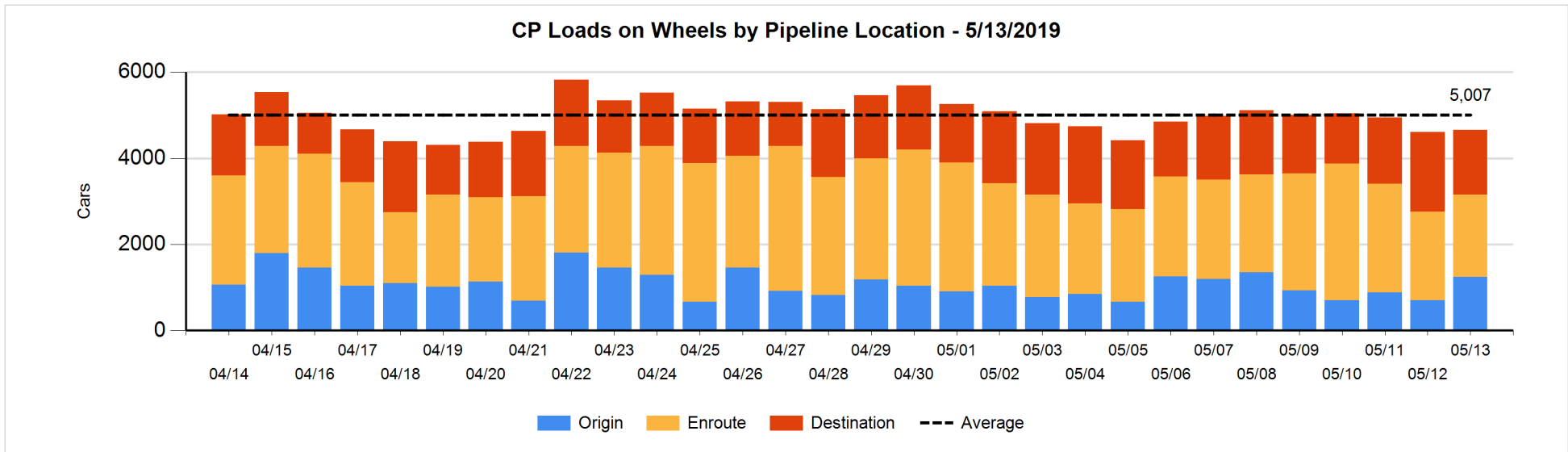
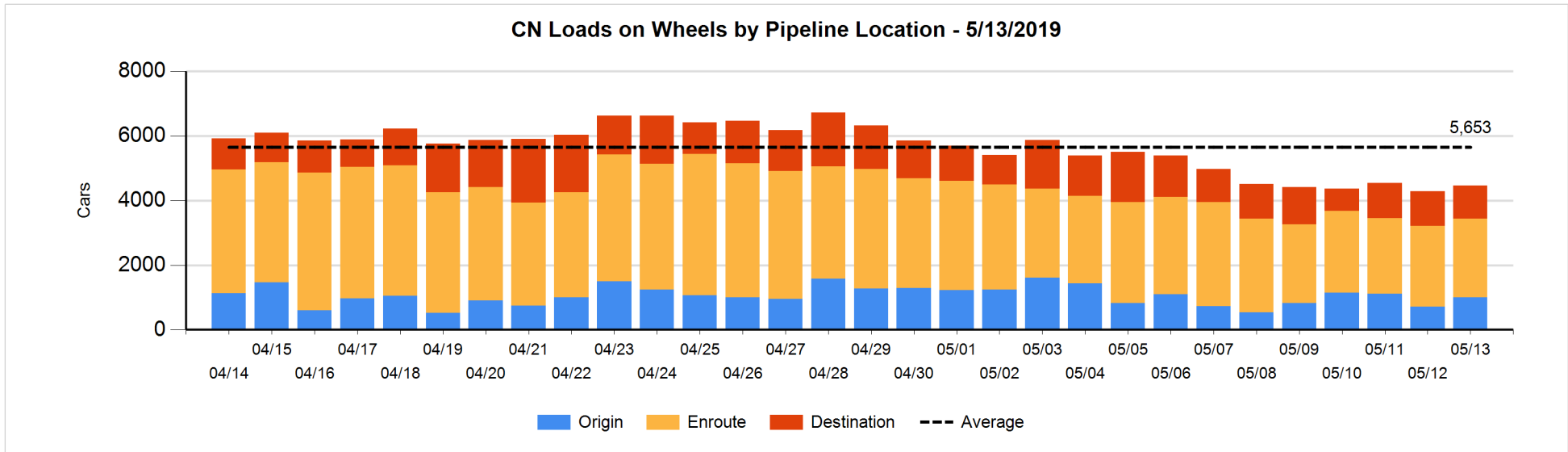


Daily Loads on Wheels By Pipeline Location - 5/13/2019

	E Canada	Prince Rupert	Thunder Bay	USA/MEX	Vancouver	Total
CN						
Origin	132	104	51	7	712	1,006
Enroute	165	1,146	204	154	755	2,424
Destination	10	42	368	41	577	1,038
	307	1,292	623	202	2,044	4,468
CP						
Origin	1		386	4	853	1,244
Enroute	99		120	10	1,684	1,913
Destination	1		291	19	1,187	1,498
	101		797	33	3,724	4,655
US Rail / Short Line						
Origin						
Enroute				66		66
Destination	7			47	61	115
	7			113	61	181

Change in Daily Loads on Wheels By Pipeline Location - Prior 24 Hours

	E Canada	Prince Rupert	Thunder Bay	USA/MEX	Vancouver	Total
CN						
Origin	132	30	-52	-2	190	298
Enroute	0	-78	4	-18	10	-82
Destination	-91	-123	55	2	126	-31
	41	-171	7	-18	326	185
CP						
Origin	-1		350	1	190	540
Enroute	-14		84	-20	-185	-135
Destination	-5		-276	-8	-69	-358
	-20		158	-27	-64	47
US Rail / Short Line						
Origin						
Enroute				-6		-6
Destination	-3			6	-14	-11
	-3			0	-14	-17

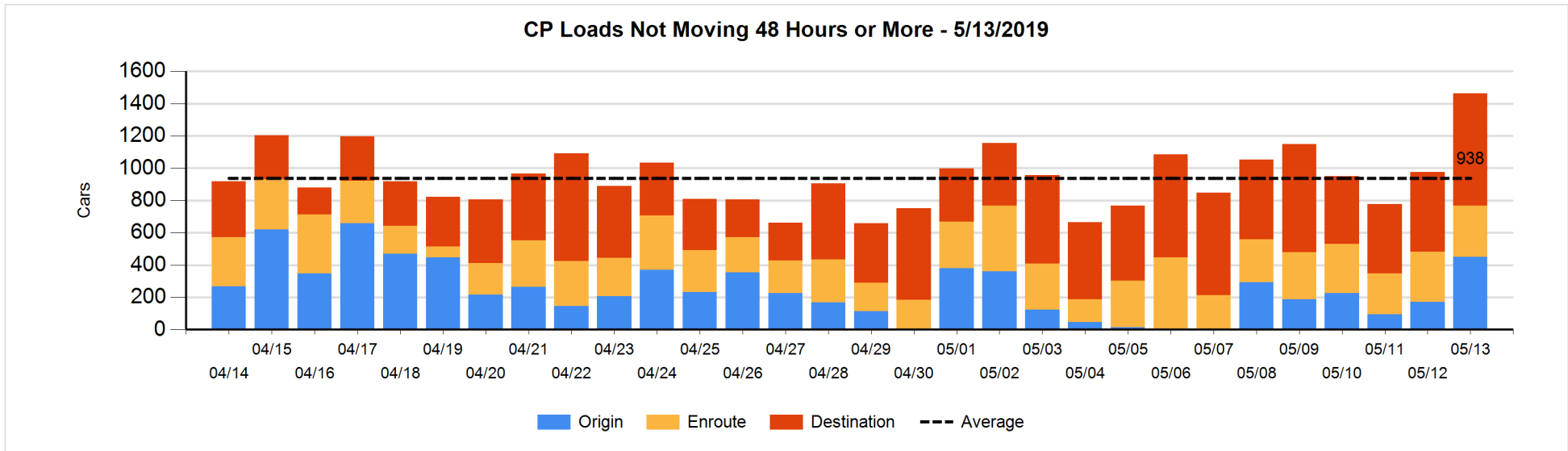
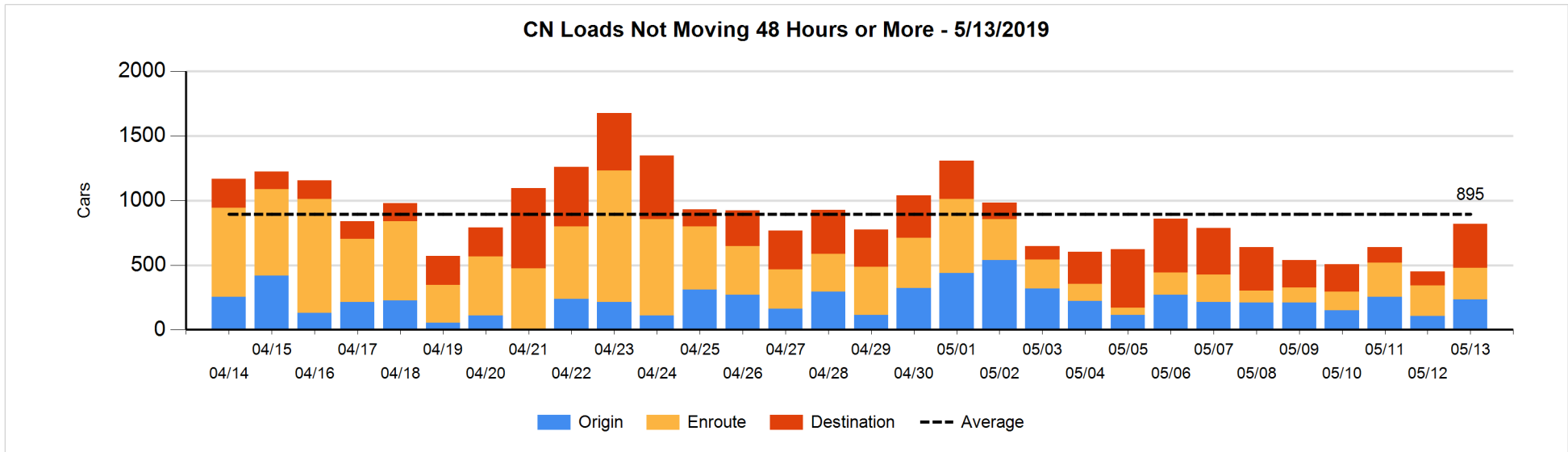


Loads Not Moving 48 Hours or More - 5/13/2019

	E Canada	Prince Rupert	Thunder Bay	USA/MEX	Vancouver	Total
CN						
Origin		74		6	155	235
Enroute	15	102	1	23	101	242
Destination	10	2	168	17	146	343
	25	178	169	46	402	820
CP						
Origin	1		36	3	411	451
Enroute	52		3	4	259	318
Destination			68		625	693
	53		107	7	1295	1462
US Rail / Short Line						
Origin						
Enroute				23		23
Destination	6			19	15	40
	6			42	15	63

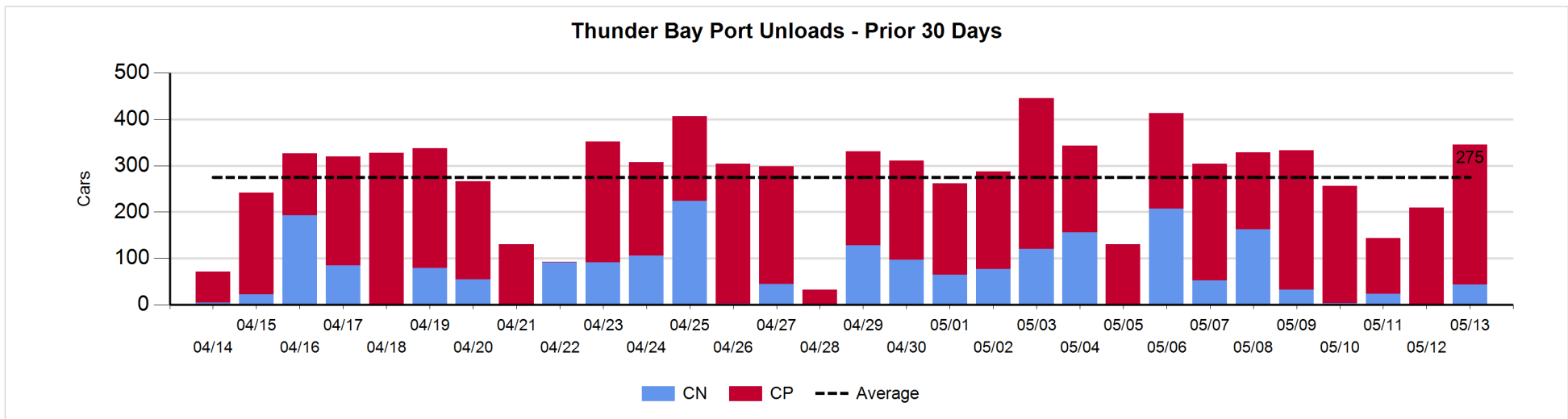
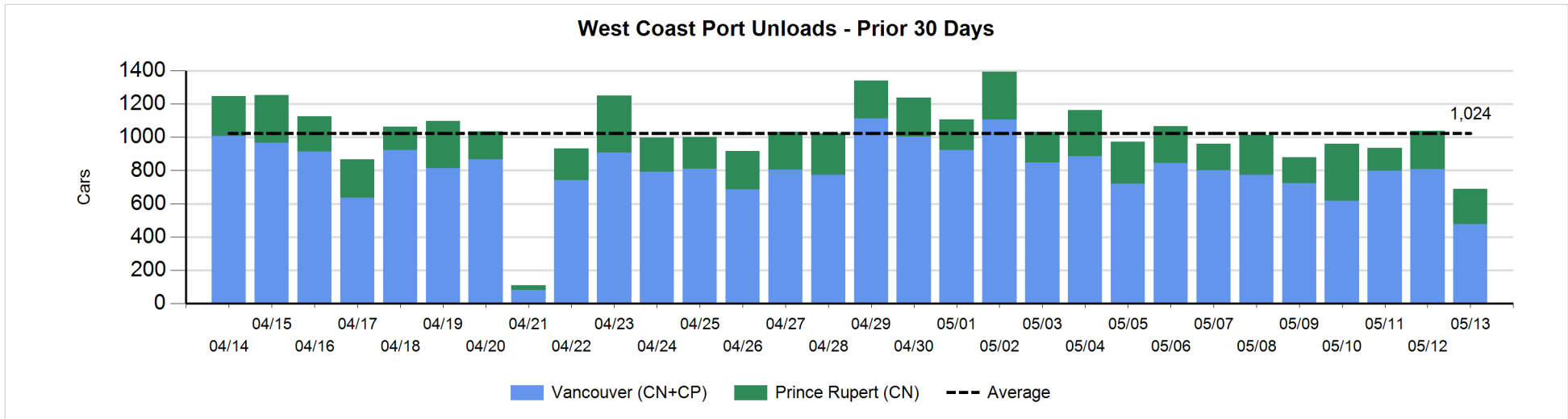
Change in Loads Not Moving 48 Hours or More - 5/13/2019

	E Canada	Prince Rupert	Thunder Bay	USA/MEX	Vancouver	Total
CN						
Origin		73		0	58	131
Enroute	0	5	0	-3	1	3
Destination	-8	0	156	-1	88	235
	-8	78	156	-4	147	369
CP						
Origin	-1		0	0	281	280
Enroute	48		0	2	-42	8
Destination	-6		20	-2	187	199
	41		20	0	426	487
US Rail / Short Line						
Origin						
Enroute				-9		-9
Destination	-4			1	-34	-37
	-4			-8	-34	-46



Port Unloads - 5/13/2019

	Prince Rupert	Vancouver	West Coast Total	Thunder Bay	Total
CN	211	180	391	44	435
CP		298	298	301	599
	211	478	689	345	1,034



Port Terminal Status

Vancouver

Daily Activity for 5/13/2019

	Cars Arrived	Cars Received in Interchange	Cars Delivered in Interchange	Cars Placed for Unloading	Loads on Wheels at Destination As of 5/13/2019
CN	123	234	66	233	577
CP	419	62	234	337	1,187
SRY		4		44	61

Port Unloads

	05/13	05/12	Week To Date	Last Week
CN	180	430	180	2,583
CP	298	379	298	2,786
SRY	21		21	79

Age Profile of Loaded Cars Waiting Placement for Unloading

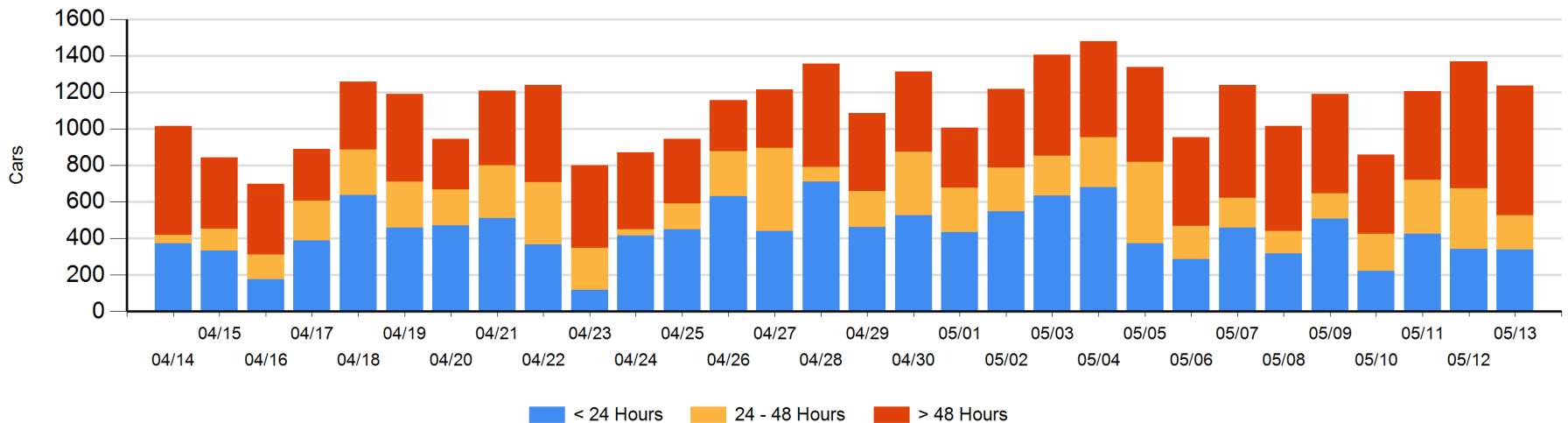
Today

	< 24 Hrs	24 - 48 Hrs	> 48-72 Hrs	> 72 Hrs	Total On Hand
CN	123	5	31	236	395
CP	217	182	160	283	842
SRY					0

Change in Last 24 Hours

	< 24 Hrs	24-48 Hrs	48 - 72 Hrs	> 72 Hrs
CN	59	-160	-126	45
CP	-63	16	22	76
SRY				

Loaded Cars on Hand Vancouver Waiting for Placement - Last 30 Days All Railways



Port Terminal Status

Prince Rupert

Daily Activity for 5/13/2019

	Cars Arrived	Cars Received in Interchange	Cars Delivered in Interchange	Cars Placed for Unloading	Loads on Wheels at Destination As of 5/13/2019
CN	88			88	42

Port Unloads

	05/13	05/12	Week To Date	Last Week
CN	211	228	211	1,489

Age Profile of Loaded Cars Waiting Placement for Unloading

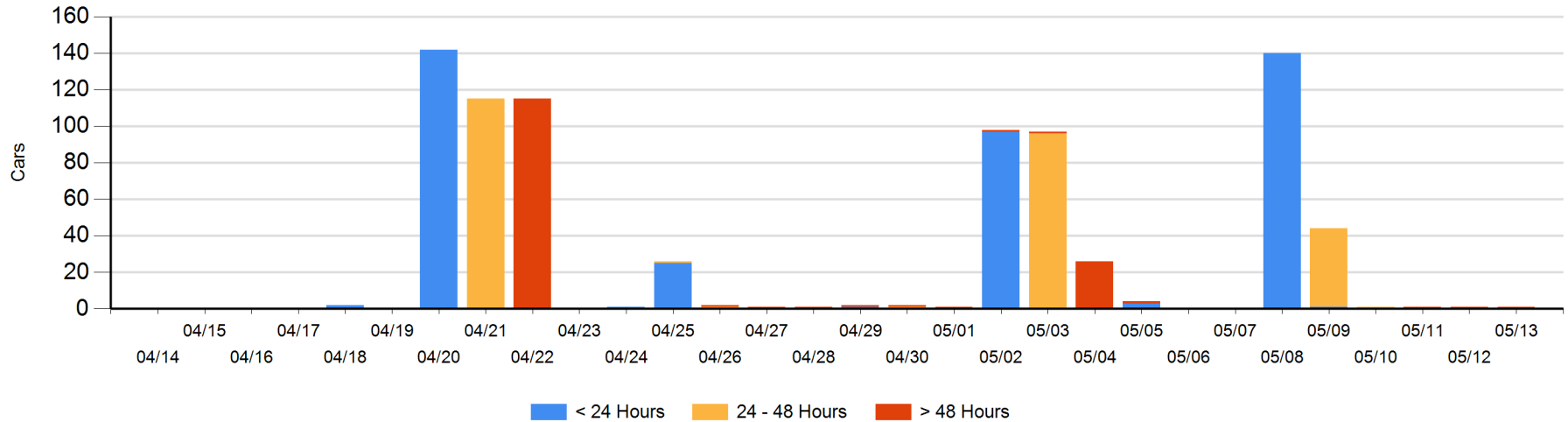
Today

	< 24 Hrs	24 - 48 Hrs	> 48-72 Hrs	> 72 Hrs	Total On Hand
CN				1	1

Change in Last 24 Hours

	< 24 Hrs	24-48 Hrs	48 - 72 Hrs	> 72 Hrs
CN				0

Loaded Cars on Hand Prince Rupert Waiting for Placement - Last 30 Days All Railways



Port Terminal Status

Thunder Bay

Daily Activity for 5/13/2019

	Cars Arrived	Cars Received in Interchange	Cars Delivered in Interchange	Cars Placed for Unloading	Loads on Wheels at Destination As of 5/13/2019
CN	99			99	368
CP	25			196	291

Port Unloads

	05/13	05/12	Week To Date	Last Week
CN	44		44	482
CP	301	210	301	1,507

Age Profile of Loaded Cars Waiting Placement for Unloading

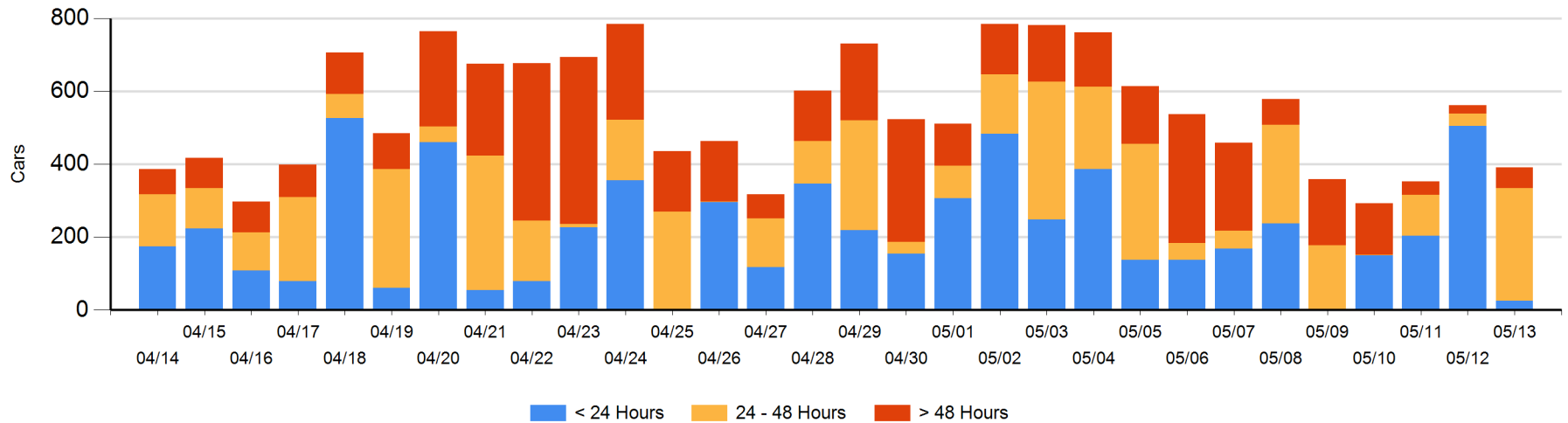
Today

	< 24 Hrs	24 - 48 Hrs	> 48-72 Hrs	> 72 Hrs	Total On Hand
CN		101		2	103
CP	25	208	34	21	288

Change in Last 24 Hours

	< 24 Hrs	24-48 Hrs	48 - 72 Hrs	> 72 Hrs
CN	-101	101		0
CP	-379	174	22	13

Loaded Cars on Hand Thunder Bay Waiting for Placement - Last 30 Days All Railways



Measurement Definitions

Loads on Wheels	<p>Count of loaded rail cars including all rail cars that have been released loaded at origin and have not been reported by the railway as unloaded at destination.</p> <p>Counts include all rail cars (hopper cars and boxcars) moving within a pipeline.</p>
Loads Not Moving	<p>Loaded rail cars for which the railways have not reported a movement event for 48 hours or more whether the rail car is at origin, enroute or at destination.</p>
Port Unloads	<p>Count of rail cars reported by railways as unloaded at the western port destinations of Vancouver, Prince Rupert and Thunder Bay.</p> <p>Unload counts include all rail cars (hopper cars and boxcars) unloaded by all receivers including major port terminals, transloaders and other receivers.</p>
Cars Arrived	<p>Count of rail cars reported as arrived at the destination railway terminal.</p>
Cars Received in Interchange	<p>Count of rail cars received in interchange by each railway within a destination railway terminal. Interchange activity is tracked for the Vancouver and Thunder Bay pipelines as applicable.</p>
Cars Delivered in Interchange	<p>Count of rail cars delivered in interchange by each railway within a destination railway terminal. Interchange activity is tracked for the Vancouver and Thunder Bay pipelines as applicable.</p>
Cars Placed for Unloading	<p>Count of rail cars reported by the railways as placed loaded at the receiver's facility for unloading.</p>
Loads on Wheels at Destination	<p>Count of rail cars that remain under load within the destination railway terminal including rail cars that have been reported as placed for unloading but not yet reported as unloaded.</p>
Waiting Placement for Unloading	<p>Count of rail cars that have been reported as arrived at the destination railway terminal but not reported as placed for unloading by the railway.</p> <p>For the Ports of Vancouver, Prince Rupert and Thunder Bay the count of rail cars waiting placement for unloading is categorized by age – i.e. the elapsed time from arrival at destination to the current report date.</p>