

SPEED READ

- Loads on wheels declined overnight, reflecting reduced CP volumes offset by an increase in CN volumes. On a net basis, volumes fell due to reduced traffic in the Vancouver and Prince Rupert corridors offset by higher volumes in the Thunder Bay, E. Canada and USA/MEX corridors.
- Network fluidity improved overnight, led by a decline in idle car counts on both CN and CP by 27% (-224) and 5% (-80), respectively. The total count of cars for 4+ days on both railways fell 11% (-95) overnight - presently at 757 cars.
- Two days in Week 42 unloads now behind prior week's performance by more than 450 unloads, reflecting reduced unloads at Vancouver and Thunder Bay offset by improved week over week performance at Prince Rupert.

Loads on Wheels

- Loads on wheels fell 3% (-301) overnight, due to reduced traffic on CP offset by higher volumes on CN - combined total at 9,006, the lowest seen in the last 30 days, and 16% below the trailing 30-day average.
- On a net basis, the decline in loads on wheels indicates reduced volumes in the Vancouver and Prince Rupert corridors offset by higher volumes in the Thunder Bay, E. Canada and USA/MEX corridors.
- CN volumes increased 3% (+136) overnight, with higher volumes across all corridors other than Prince Rupert. System wide CN loads on wheels now at 4,604 and 18% below the trailing 30-day average.
- CP volumes fell 9% (-421) overnight, driven by a decline in traffic in the Vancouver offset by a rise in volumes in the Thunder Bay, USA/MEX and E. Canada corridors. CP system wide loads on wheels currently at 4,237, the lowest seen in the last 30 days, and 15% below the trailing 30-day average.
- Vancouver presently at 5,390, the lowest seen in the last 30 days, fell 8% (-441) overnight, now 16% below the trailing 30-day average.
- The Prince Rupert pipeline currently at 1,228, the lowest seen in the last 30 days, fell for the third consecutive day, down 5% (-64) overnight, and 24% below the trailing 30-day average.
- Thunder Bay volumes increased 7% (+102) overnight - now at 1,523 and 3% below the trailing 30-day average, with 57% of traffic moving on CP.

Hopper Car Rationing

- No hopper car rationing was reported for either CN or CP in week 40.

Loads Not Moving

- **The count of cars not moving for 48+ hours fell 13% (-304) overnight, reflecting lower counts on both CN and CP. Idle car counts currently at 1,979 and 8% above the trailing 30-day average.**
- CN
 - **The count of idle cars for 48+ hours decreased 27% (-224) overnight - currently at 596 cars.**
 - The number of cars idle for 4+ days declined 34% (-92) overnight - presently at 182 cars.
 - The count of cars not moving for 7+ days increased for the third consecutive day, up 2% (+1) overnight - now at 62 cars.
 - Vancouver represents 68% of all idle cars.
 - In total 37% of all idle cars are dwelling at origin locations.
- CP
 - **CP idle car counts for 48+ hours fell 5% (-80) overnight - presently at 1,383 cars.**
 - The number of cars idle for 4+ days decreased marginally by 1% (-3) overnight - now at 575 cars.

- The number of cars idle for 7+ days declined 17% (-77) overnight - presently at 380 cars.
- Vancouver accounts for 86% of all idle cars.
- In total 31% of all idle cars are dwelling at origin locations.

Port Performance

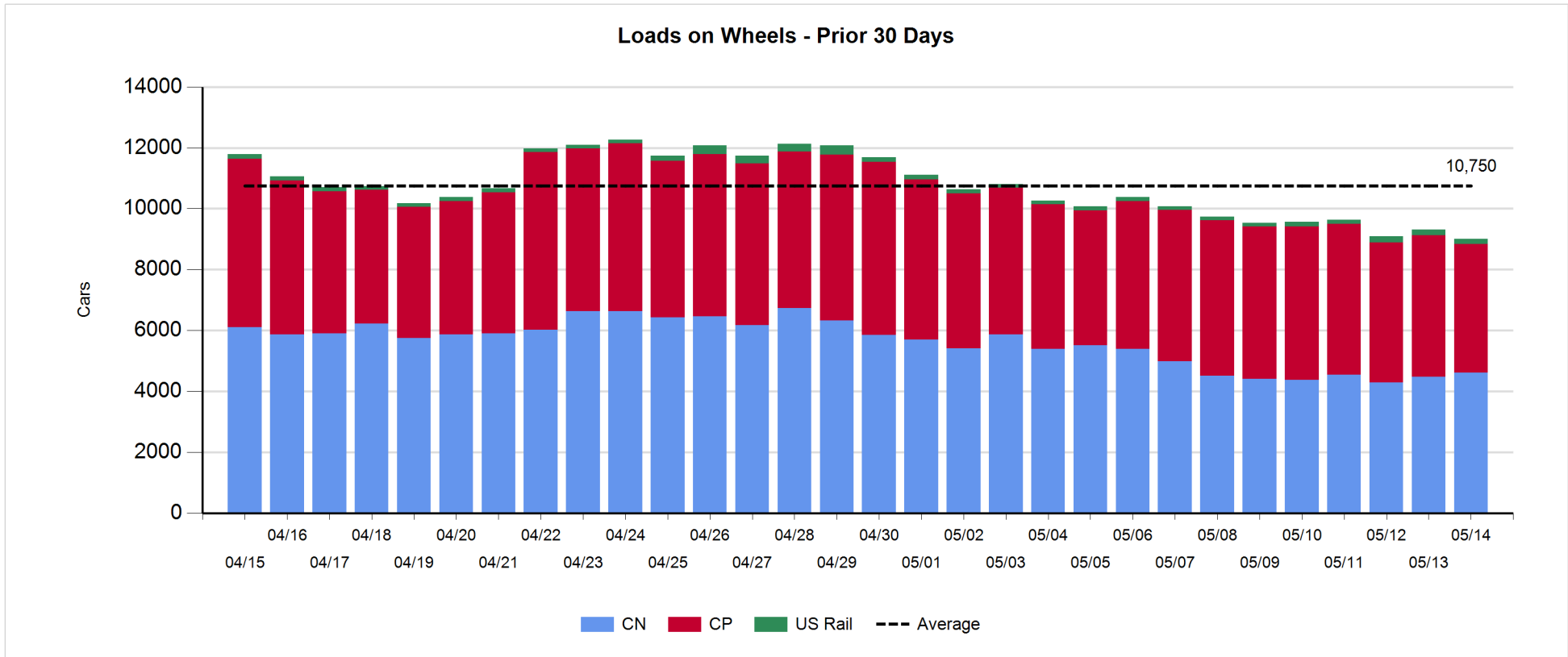
- CN and CP reported a total of 1,249 cars unloaded at the three major ports, now 4% below the trailing 30-day average. Two days in Week 42 unloads now behind last week's pace by more than 450 unloads, reflecting reduced unloads at Vancouver and Thunder Bay offset by higher unloads at Prince Rupert.
- Vancouver
 - 793 unloads reported by CN and CP at the Port of Vancouver; CN - 344 and CP - 449. Two days in Week 42 unloads are tracking behind last week's performance by more than 350 unloads.
 - There are 1,700 cars on site at Vancouver with more than 700 cars arriving at the port in the last 24 hours.
 - CN and CP have about 1,250 cars in British Columbia en route to Vancouver, with fewer than 950 cars at Kamloops and west, and 69% of traffic moving on CP.
- Prince Rupert
 - Prince Rupert reported 244 unloads, now ahead of last week's unloads after two days by more than 50 unloads.
 - Loads on wheels now above 1,000 cars - presently at 1,228 cars.
 - There are more than 850 cars west of Jasper en route to Prince Rupert.
 - There are 11 cars on site at Prince Rupert with more than 200 cars arriving at the port in the last 24 hours.
- Thunder Bay
 - 212 unloads were reported at Thunder Bay yesterday. Two days in Week 42 unloads are tracking behind last week's pace by 150 unloads.
 - There are 600 cars on site at Thunder Bay with 150 cars arriving at the port in the prior 24 hours.
 - There are 200 cars en route to Thunder Bay from Winnipeg and east.

Daily Loads on Wheels - 5/14/2019

	E Canada	Prince Rupert	Thunder Bay	USA/MEX	Vancouver	Total
CN	364	1,228	661	212	2,139	4,604
CP	117		862	49	3,209	4,237
Short Line	7				42	49
US Rail				116		116
	488	1,228	1,523	377	5,390	9,006

Change in Loads on Wheels - Prior 24 Hours

	E Canada	Prince Rupert	Thunder Bay	USA/MEX	Vancouver	Total
CN	57	-64	38	10	95	136
CP	16		64	16	-517	-421
Short Line	0				-19	-19
US Rail				3		3
	73	-64	102	29	-441	-301

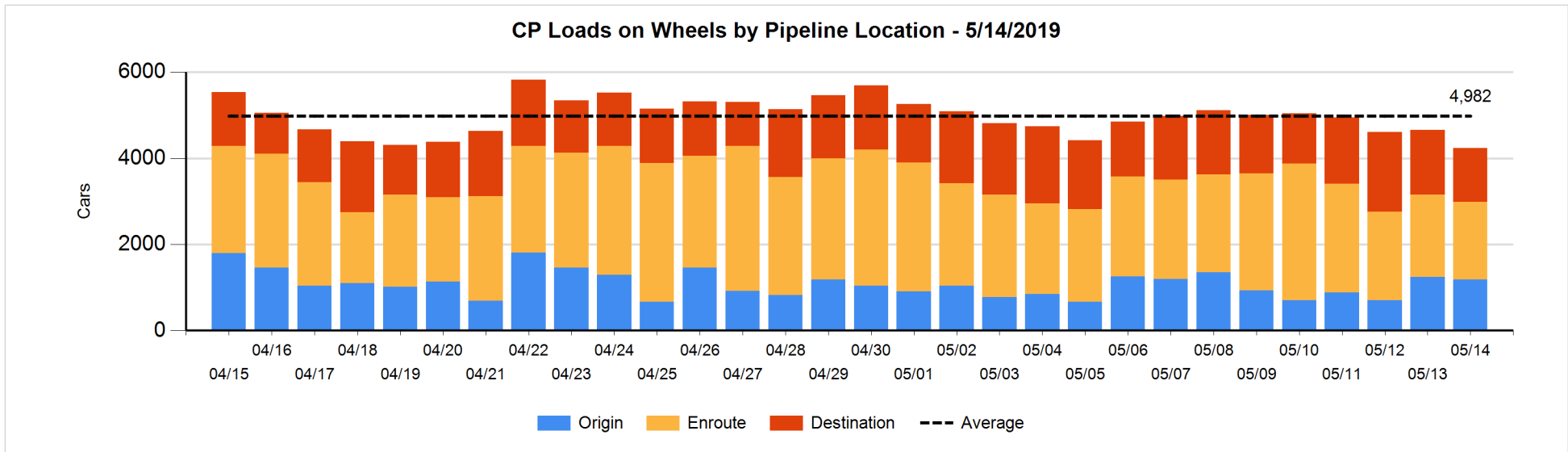
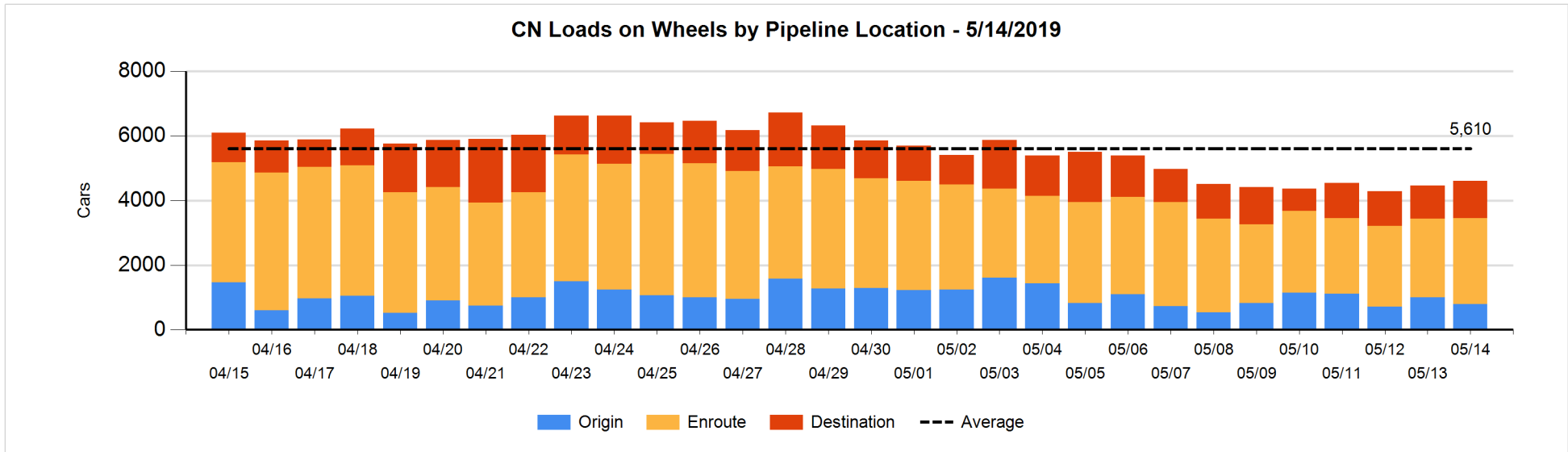


Daily Loads on Wheels By Pipeline Location - 5/14/2019

	E Canada	Prince Rupert	Thunder Bay	USA/MEX	Vancouver	Total
CN						
Origin	49	101	111	38	498	797
Enroute	284	1,116	107	143	1,013	2,663
Destination	31	11	443	31	628	1,144
	364	1,228	661	212	2,139	4,604
CP						
Origin	21		342	22	794	1,179
Enroute	57		360	13	1,375	1,805
Destination	39		160	14	1,040	1,253
	117		862	49	3,209	4,237
US Rail / Short Line						
Origin						
Enroute				71		71
Destination	7			45	42	94
	7			116	42	165

Change in Daily Loads on Wheels By Pipeline Location - Prior 24 Hours

	E Canada	Prince Rupert	Thunder Bay	USA/MEX	Vancouver	Total
CN						
Origin	-83	-3	60	31	-214	-209
Enroute	119	-30	-97	-11	258	239
Destination	21	-31	75	-10	51	106
	57	-64	38	10	95	136
CP						
Origin	20		-45	18	-61	-68
Enroute	-42		240	3	-309	-108
Destination	38		-131	-5	-147	-245
	16		64	16	-517	-421
US Rail / Short Line						
Origin						
Enroute				5		5
Destination	0			-2	-19	-21
	0			3	-19	-16

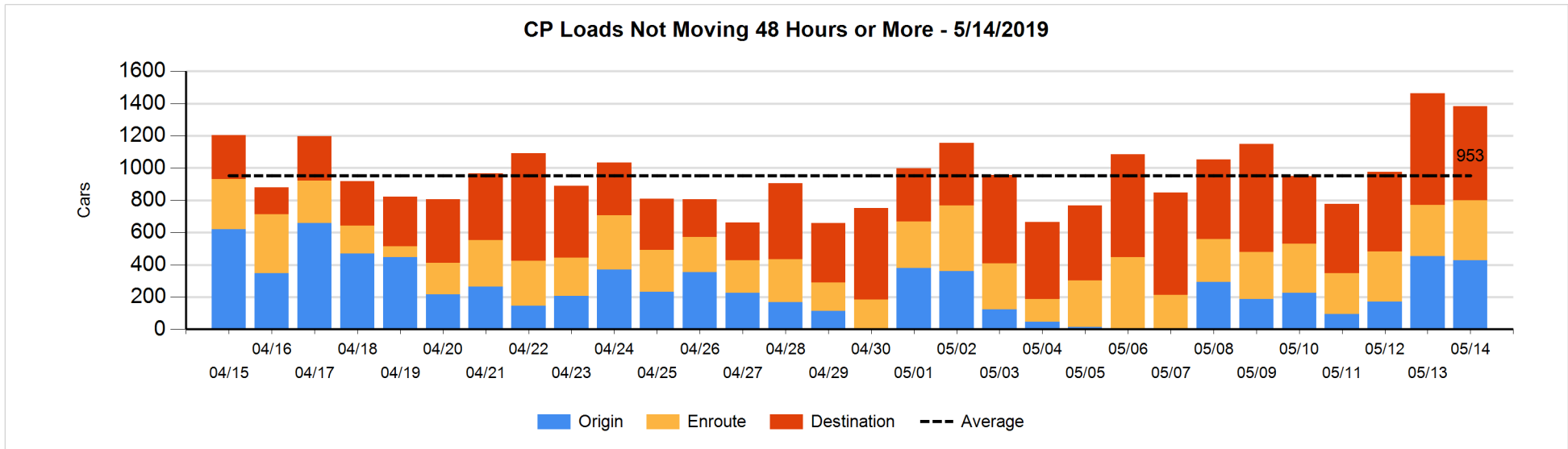
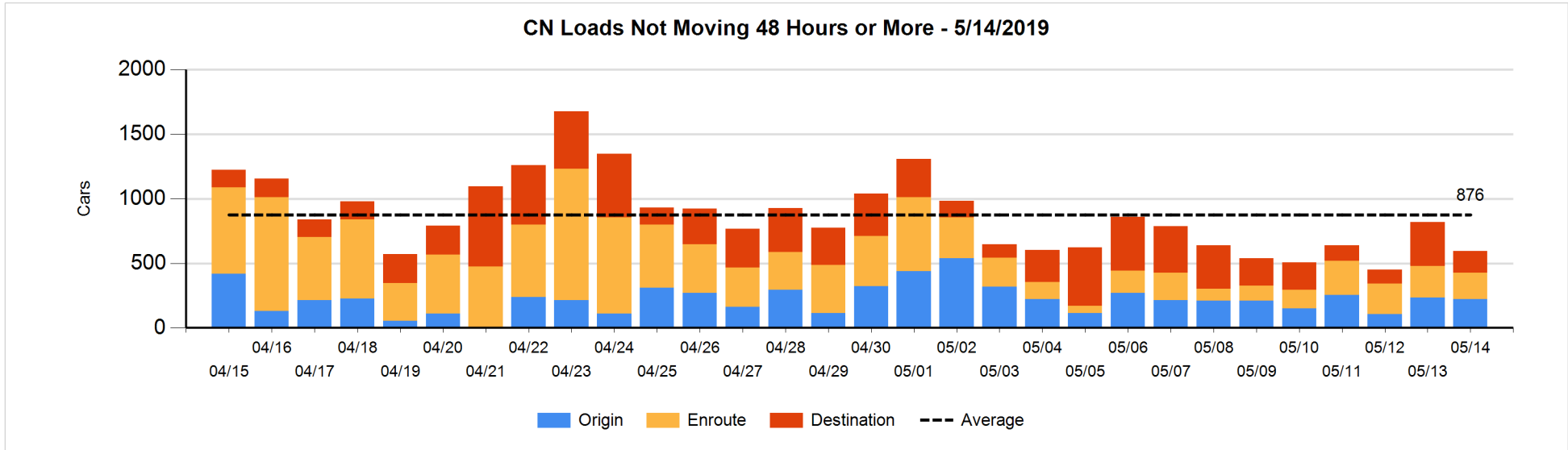


Loads Not Moving 48 Hours or More - 5/14/2019

	E Canada	Prince Rupert	Thunder Bay	USA/MEX	Vancouver	Total
CN						
Origin		1		6	214	221
Enroute	12	106	1	26	59	204
Destination	8	1	20	10	132	171
	20	108	21	42	405	596
CP						
Origin	1		16	1	411	429
Enroute	50		3	9	310	372
Destination			115		467	582
	51		134	10	1188	1383
US Rail / Short Line						
Origin						
Enroute				23		23
Destination	6			16	9	31
	6			39	9	54

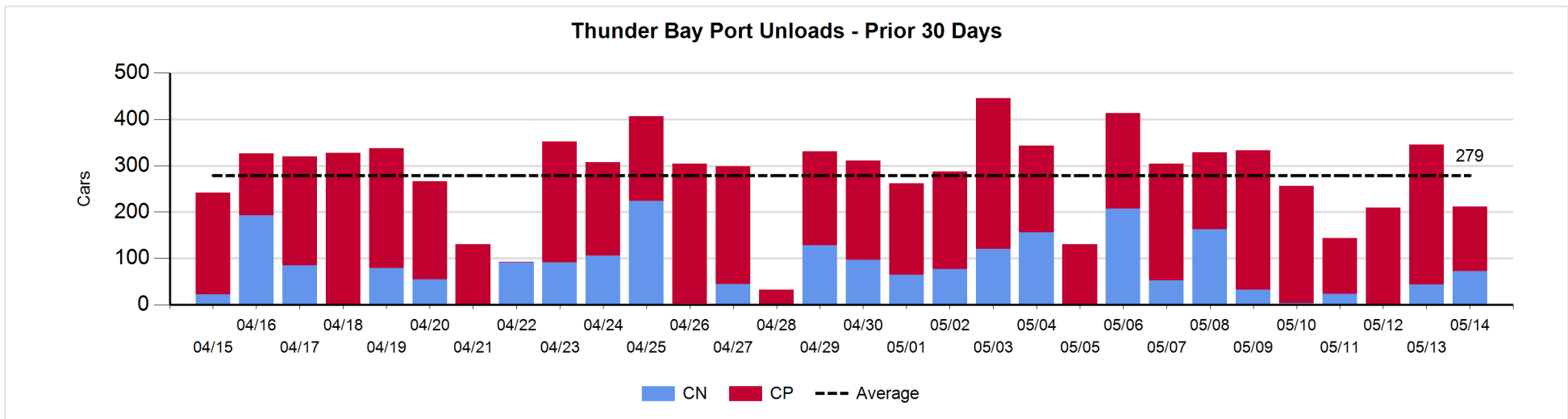
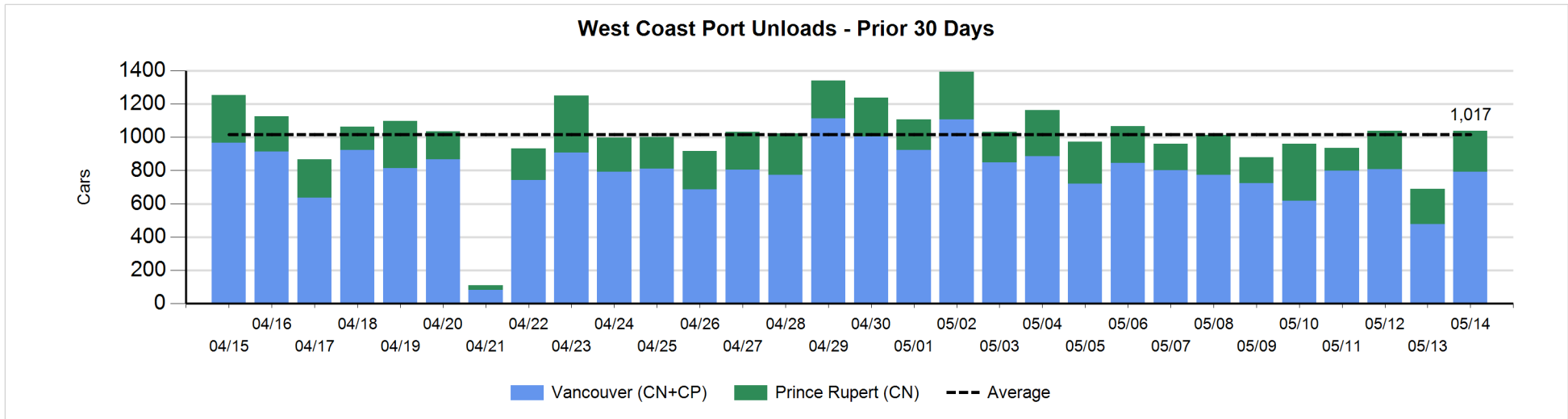
Change in Loads Not Moving 48 Hours or More - 5/14/2019

	E Canada	Prince Rupert	Thunder Bay	USA/MEX	Vancouver	Total
CN						
Origin		-73		0	59	-14
Enroute	-3	4	0	3	-42	-38
Destination	-2	-1	-148	-7	-14	-172
	-5	-70	-148	-4	3	-224
CP						
Origin	0		-21	-2	0	-23
Enroute	-2		0	5	51	54
Destination			47		-158	-111
	-2		26	3	-107	-80
US Rail / Short Line						
Origin						
Enroute				0		0
Destination	0			-3	-6	-9
	0			-3	-6	-9



Port Unloads - 5/14/2019

	Prince Rupert	Vancouver	West Coast Total	Thunder Bay	Total
CN	244	344	588	73	661
CP		449	449	139	588
	244	793	1,037	212	1,249



Port Terminal Status

Vancouver

Daily Activity for 5/14/2019

	Cars Arrived	Cars Received in Interchange	Cars Delivered in Interchange	Cars Placed for Unloading	Loads on Wheels at Destination As of 5/14/2019
CN	35	360		267	628
CP	680		366	286	1,040
SRY		6		6	42

Port Unloads

	05/14	05/13	Week To Date	Last Week
CN	344	180	524	2,583
CP	449	298	747	2,786
SRY	22	21	43	79

Age Profile of Loaded Cars Waiting Placement for Unloading

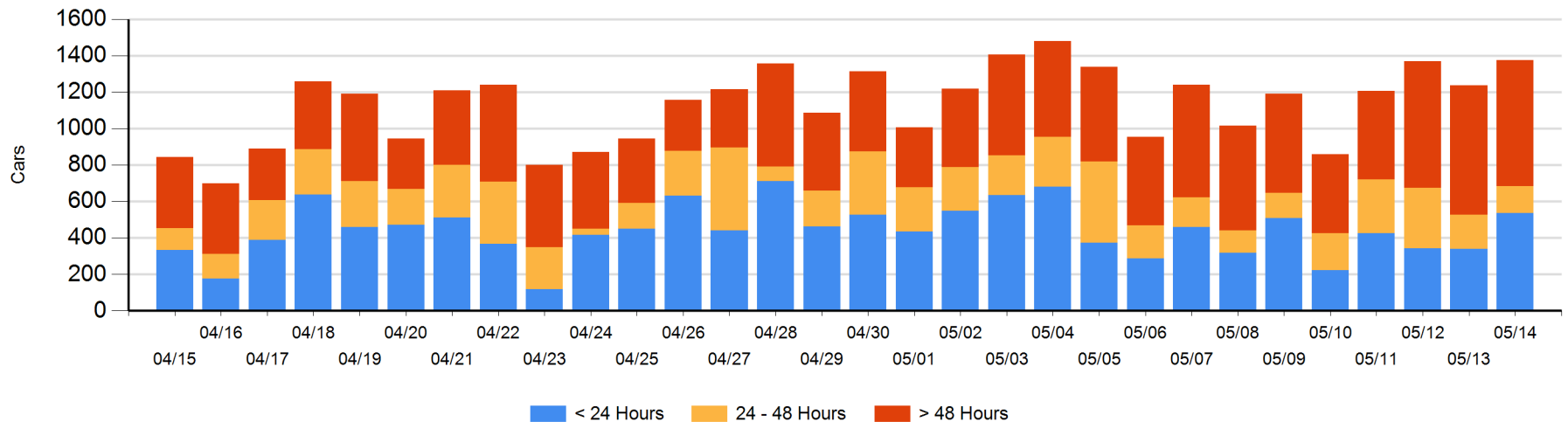
Today

	< 24 Hrs	24 - 48 Hrs	> 48-72 Hrs	> 72 Hrs	Total On Hand
CN	31	119	5	256	411
CP	506	27	99	332	964
SRY					0

Change in Last 24 Hours

	< 24 Hrs	24-48 Hrs	48 - 72 Hrs	> 72 Hrs
CN	-92	114	-26	20
CP	289	-155	-61	49
SRY				

Loaded Cars on Hand Vancouver Waiting for Placement - Last 30 Days All Railways



Port Terminal Status

Prince Rupert

Daily Activity for 5/14/2019

	Cars Arrived	Cars Received in Interchange	Cars Delivered in Interchange	Cars Placed for Unloading	Loads on Wheels at Destination As of 5/14/2019
CN	214			214	11

Port Unloads

	05/14	05/13	Week To Date	Last Week
CN	244	211	455	1,489

Age Profile of Loaded Cars Waiting Placement for Unloading

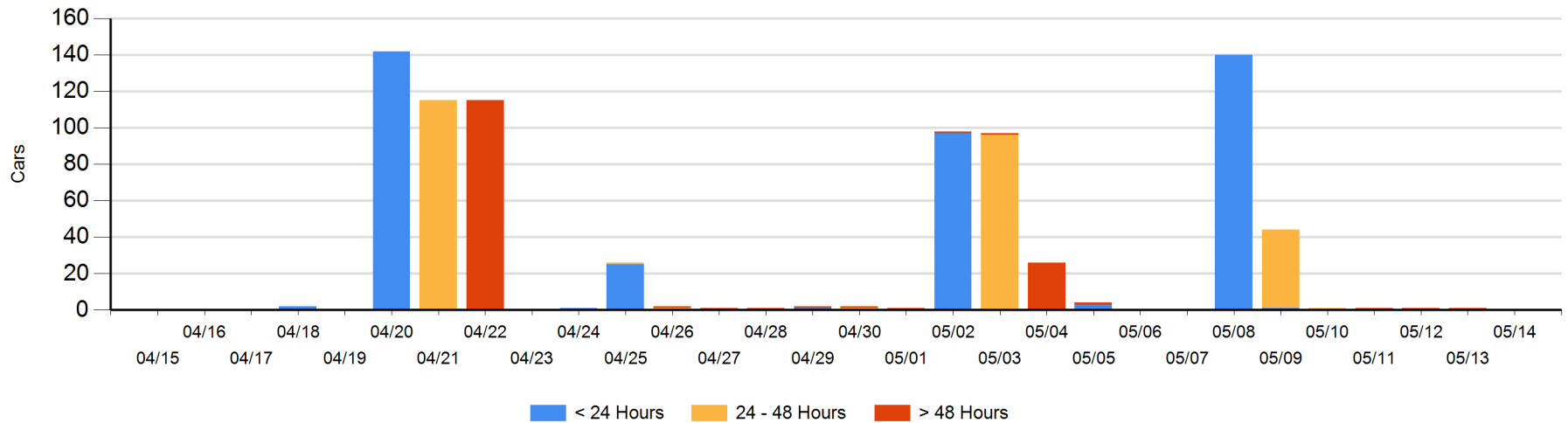
Today

	< 24 Hrs	24 - 48 Hrs	> 48-72 Hrs	> 72 Hrs	Total On Hand
CN					0

Change in Last 24 Hours

	< 24 Hrs	24-48 Hrs	48 - 72 Hrs	> 72 Hrs
CN				-1

Loaded Cars on Hand Prince Rupert Waiting for Placement - Last 30 Days All Railways



Port Terminal Status

Thunder Bay

Daily Activity for 5/14/2019

	Cars Arrived	Cars Received in Interchange	Cars Delivered in Interchange	Cars Placed for Unloading	Loads on Wheels at Destination As of 5/14/2019
CN	148			101	443
CP	8			139	160

Port Unloads

	05/14	05/13	Week To Date	Last Week
CN	73	44	117	482
CP	139	301	440	1,507

Age Profile of Loaded Cars Waiting Placement for Unloading

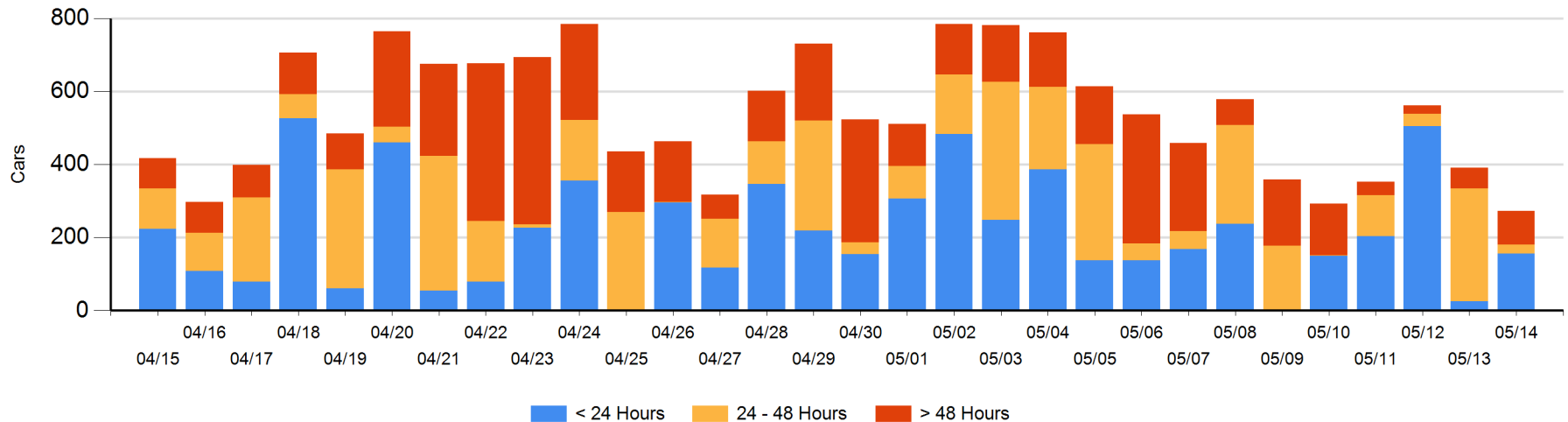
Today

	< 24 Hrs	24 - 48 Hrs	> 48-72 Hrs	> 72 Hrs	Total On Hand
CN	148			2	150
CP	8	25	49	40	122

Change in Last 24 Hours

	< 24 Hrs	24-48 Hrs	48 - 72 Hrs	> 72 Hrs
CN	148	-101		0
CP	-17	-183	15	19

Loaded Cars on Hand Thunder Bay Waiting for Placement - Last 30 Days All Railways



Measurement Definitions

Loads on Wheels	<p>Count of loaded rail cars including all rail cars that have been released loaded at origin and have not been reported by the railway as unloaded at destination.</p> <p>Counts include all rail cars (hopper cars and boxcars) moving within a pipeline.</p>
Loads Not Moving	<p>Loaded rail cars for which the railways have not reported a movement event for 48 hours or more whether the rail car is at origin, enroute or at destination.</p>
Port Unloads	<p>Count of rail cars reported by railways as unloaded at the western port destinations of Vancouver, Prince Rupert and Thunder Bay.</p> <p>Unload counts include all rail cars (hopper cars and boxcars) unloaded by all receivers including major port terminals, transloaders and other receivers.</p>
Cars Arrived	<p>Count of rail cars reported as arrived at the destination railway terminal.</p>
Cars Received in Interchange	<p>Count of rail cars received in interchange by each railway within a destination railway terminal. Interchange activity is tracked for the Vancouver and Thunder Bay pipelines as applicable.</p>
Cars Delivered in Interchange	<p>Count of rail cars delivered in interchange by each railway within a destination railway terminal. Interchange activity is tracked for the Vancouver and Thunder Bay pipelines as applicable.</p>
Cars Placed for Unloading	<p>Count of rail cars reported by the railways as placed loaded at the receiver's facility for unloading.</p>
Loads on Wheels at Destination	<p>Count of rail cars that remain under load within the destination railway terminal including rail cars that have been reported as placed for unloading but not yet reported as unloaded.</p>
Waiting Placement for Unloading	<p>Count of rail cars that have been reported as arrived at the destination railway terminal but not reported as placed for unloading by the railway.</p> <p>For the Ports of Vancouver, Prince Rupert and Thunder Bay the count of rail cars waiting placement for unloading is categorized by age – i.e. the elapsed time from arrival at destination to the current report date.</p>