

## SPEED READ

- Loads on wheels increased overnight, marking an increase in CN volumes offset by lower CP volumes. On a net basis, volumes increased due to higher volumes across all corridors other than E. Canada.
- Network fluidity improved overnight, led by a decline in idle car counts on CN by 40% (-103) offset by a rise in idle car counts on CP by 16% (+68). The total count of cars for 4+ days on both railways decreased significantly by 57% (-235) overnight - presently at 180 cars, the lowest seen in the last 30 days.
- Three days in Week 44 unloads now behind prior week's performance by more than 350 unloads, marking reduced unloads at Vancouver and Prince Rupert offset by improved week over week performance at Thunder Bay.

---

## Loads on Wheels

- Loads on wheels increased 4% (+312) overnight and have now increased for the fourth consecutive day, due to higher volumes on CN offset by lower volumes on CP - combined total at 7,918 and 12% below the trailing 30-day average.
- On a net basis, the rise in loads on wheels reflects higher volumes across all corridors other than E. Canada.
- CN volumes increased significantly by 10% (+359) overnight, with higher volumes in the Vancouver, Prince Rupert and USA/MEX corridors offset by reduced volumes in the Thunder Bay and E. Canada corridors. System wide CN loads on wheels now at 3,879 and 14% below the trailing 30-day average.
- CP volumes decreased slightly by 1% (-44) overnight, driven by a decline in traffic across all corridors other than Thunder Bay. CP system wide loads on wheels now at 3,920 and 11% below the trailing 30-day average.
- Vancouver now at 4,541, rose 2% (+96) overnight and have now increased for the third consecutive day, now 16% below the trailing 30-day average.
- The Prince Rupert pipeline now at 1,112, increased significantly by 16% (+152) overnight, and 16% below the trailing 30-day average.
- Thunder Bay volumes increased 4% (+50) overnight - presently at 1,293 and 7% below the trailing 30-day average, with 79% of traffic moving on CP.

## Hopper Car Rationing

- CN rationed 212 hopper cars in week 42.

## Loads Not Moving

- **The count of cars not moving for 48+ hours fell 5% (-35) overnight, marking reduced counts on CN offset by higher counts on CP. Idle car counts presently at 658, the lowest seen in the last 30 days, and 57% below the trailing 30-day average.**
- CN
  - **The count of idle cars for 48+ hours decreased 40% (-103) overnight - currently at 157 cars, the lowest seen in the last 30 days.**
  - The number of cars idle for 4+ days fell for the third consecutive day, down 30% (-37) overnight - now at 87 cars.
  - The count of cars not moving for 7+ days increased 44% (+20) overnight - now at 65 cars.
  - Vancouver represents 46% of all idle cars.
  - In total 11% of all idle cars are dwelling at origin locations.
- CP
  - **CP idle car counts for 48+ hours increased 16% (+68) overnight - now at 501 cars.**
  - The number of cars idle for 4+ days declined significantly by 68% (-198) overnight - presently at 93 cars, the lowest seen in the last 30 days.
  - The number of cars idle for 7+ days declined significantly by 53% (-38) overnight and have now decreased for the fourth consecutive day - presently at 34 cars, the lowest seen in the last 30 days.

- Vancouver accounts for 44% of all idle cars.
- In total 36% of all idle cars are dwelling at origin locations.

### **Port Performance**

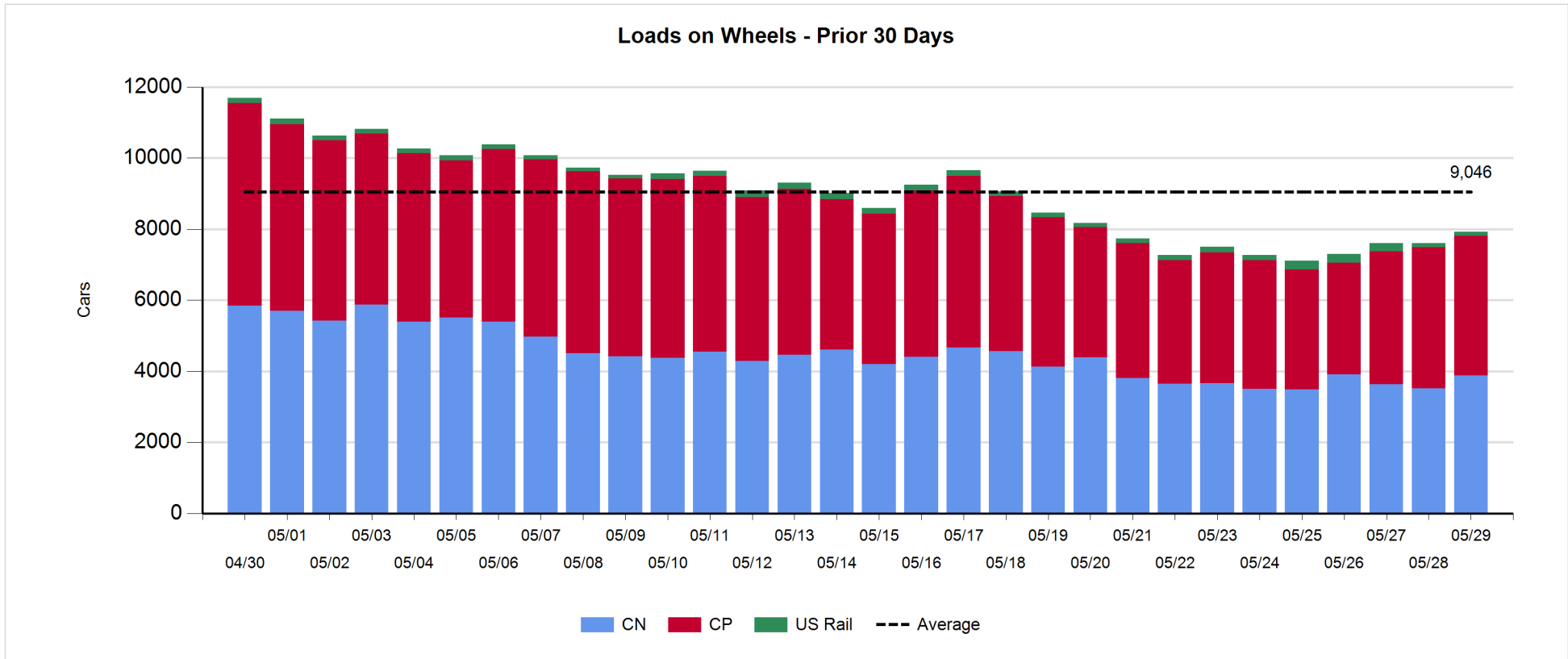
- CN and CP reported a total of 741 cars unloaded at the three major ports, the lowest seen in the last 30 days, now 37% below the trailing 30-day average. Three days in Week 44 unloads now behind last week's pace by more than 350 unloads, marking reduced unloads at Vancouver and Prince Rupert offset by higher unloads at Thunder Bay.
- Vancouver
  - 532 unloads reported by CN and CP at the Port of Vancouver; CN - 143 and CP - 389. Three days in Week 44 unloads are tracking behind last week's performance by more than 500 unloads.
  - There are more than 850 cars on site at Vancouver with less than 450 cars arriving at the port in the last 24 hours.
  - CN and CP have more than 950 cars in British Columbia en route to Vancouver, with less than 500 cars at Kamloops and west, and 66% of traffic moving on CP.
- Prince Rupert
  - Prince Rupert reported 45 unloads, now behind last week's unloads after three days by more than 150 unloads.
  - Loads on wheels now above 1,000 cars - now at 1,112 cars.
  - There are more than 500 cars west of Jasper en route to Prince Rupert.
  - There are zero cars on site at Prince Rupert with zero cars arriving at the port in the last 24 hours.
- Thunder Bay
  - 164 unloads were reported at Thunder Bay yesterday. Three days in Week 44 unloads are tracking ahead of last week's pace by more than 300 unloads.
  - There are 350 cars on site at Thunder Bay with about 250 cars arriving at the port in the prior 24 hours.
  - There are more than 400 cars en route to Thunder Bay from Winnipeg and east.

**Daily Loads on Wheels - 5/29/2019**

	E Canada	Prince Rupert	Thunder Bay	USA/MEX	Vancouver	Total
CN	238	1,112	276	215	2,038	3,879
CP	74		1,017	363	2,466	3,920
Short Line	4				37	41
US Rail				78		78
	316	1,112	1,293	656	4,541	7,918

**Change in Loads on Wheels - Prior 24 Hours**

	E Canada	Prince Rupert	Thunder Bay	USA/MEX	Vancouver	Total
CN	-10	152	-85	64	238	359
CP	-12		135	-27	-140	-44
Short Line	3				-2	1
US Rail				-4		-4
	-19	152	50	33	96	312

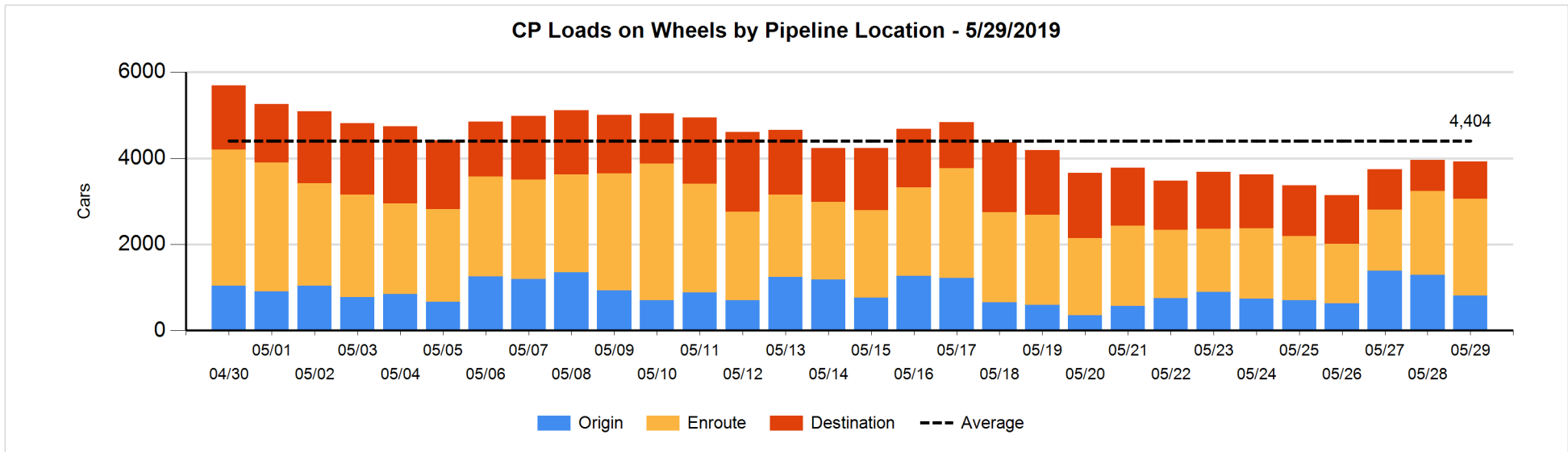
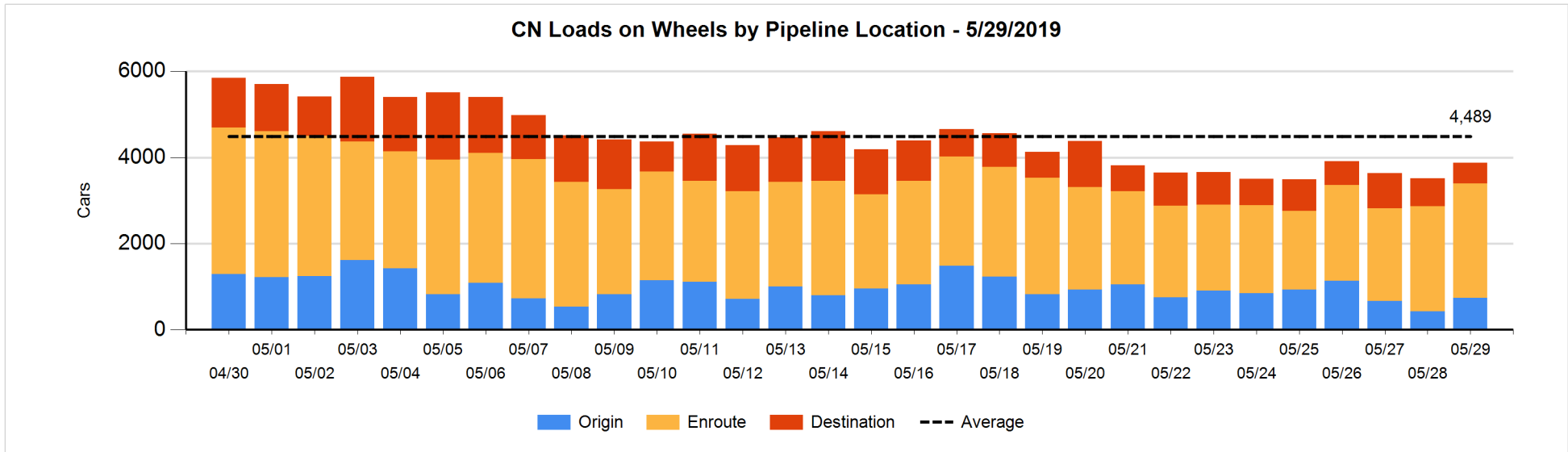


**Daily Loads on Wheels By Pipeline Location - 5/29/2019**

	E Canada	Prince Rupert	Thunder Bay	USA/MEX	Vancouver	Total
CN						
Origin	13	304		69	355	741
Enroute	157	808	132	130	1,428	2,655
Destination	68		144	16	255	483
	238	1,112	276	215	2,038	3,879
CP						
Origin			367	15	427	809
Enroute	69		448	277	1,461	2,255
Destination	5		202	71	579	857
	74		1,017	363	2,467	3,921
US Rail / Short Line						
Origin						
Enroute				55		55
Destination	4			23	37	64
	4			78	37	119

**Change in Daily Loads on Wheels By Pipeline Location - Prior 24 Hours**

	E Canada	Prince Rupert	Thunder Bay	USA/MEX	Vancouver	Total
CN						
Origin	-60	96	-53	51	282	316
Enroute	57	101	-25	19	64	216
Destination	-7	-45	-7	-6	-108	-173
	-10	152	-85	64	238	359
CP						
Origin	-57		-71	-25	-328	-481
Enroute	50		125	-48	178	305
Destination	-5		81	46	10	132
	-12		135	-27	-140	-44
US Rail / Short Line						
Origin						
Enroute				-1		-1
Destination	3			-3	-2	-2
	3			-4	-2	-3

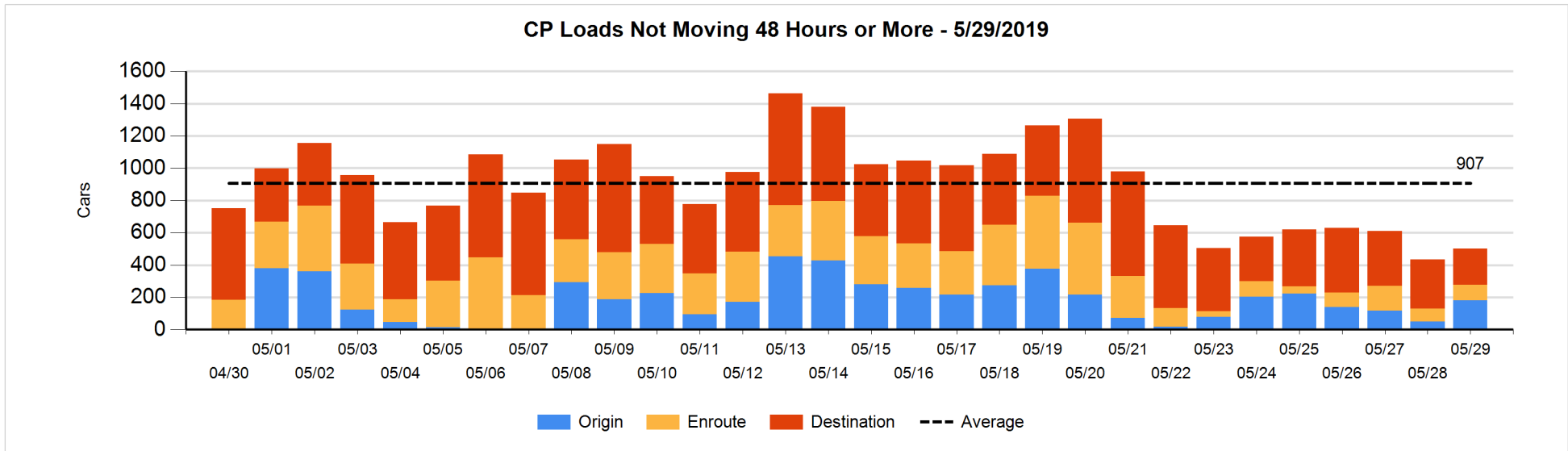
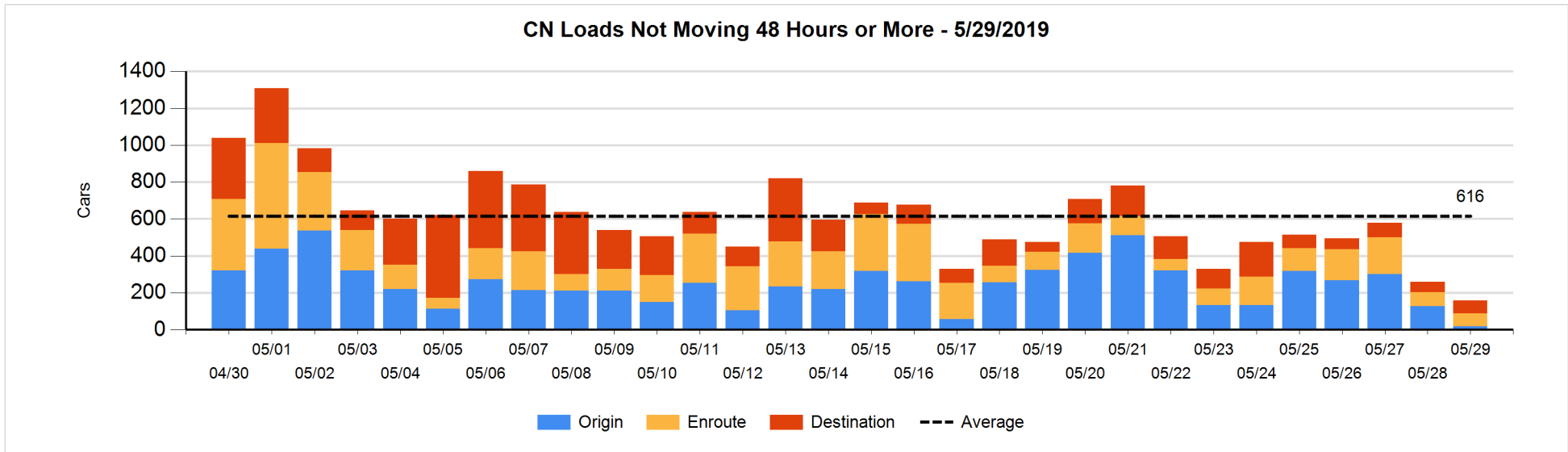


**Loads Not Moving 48 Hours or More - 5/29/2019**

	E Canada	Prince Rupert	Thunder Bay	USA/MEX	Vancouver	Total
<b>CN</b>						
Origin		7			11	18
Enroute	45	4	1	12	8	70
Destination	6		1	8	54	69
	51	11	2	20	73	157
<b>CP</b>						
Origin			148	15	18	181
Enroute			1	75	19	95
Destination			44		181	225
			193	90	218	501
<b>US Rail / Short Line</b>						
Origin						
Enroute				25		25
Destination				20	9	29
				45	9	54

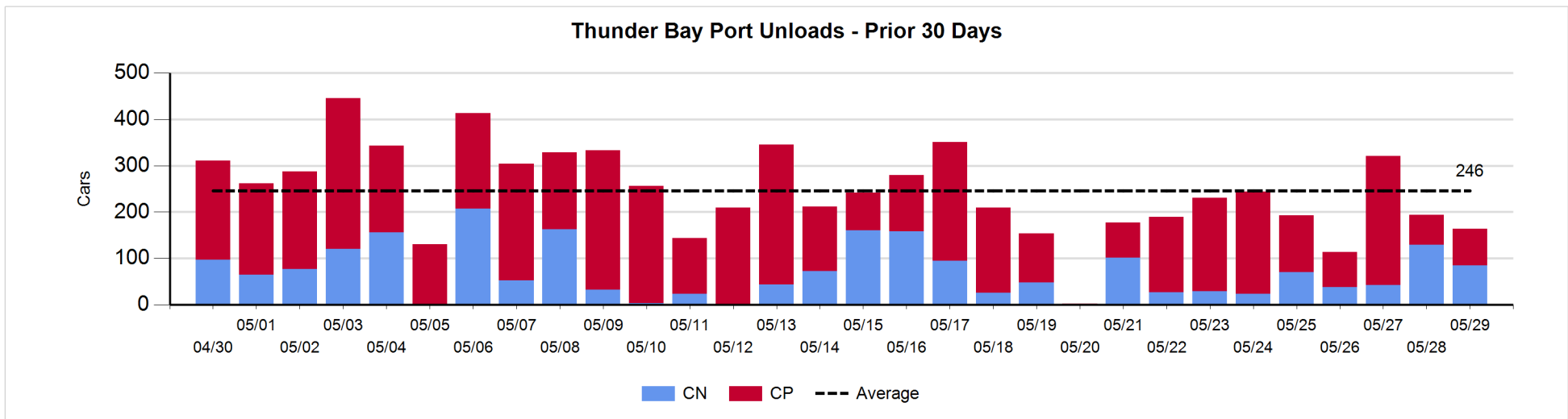
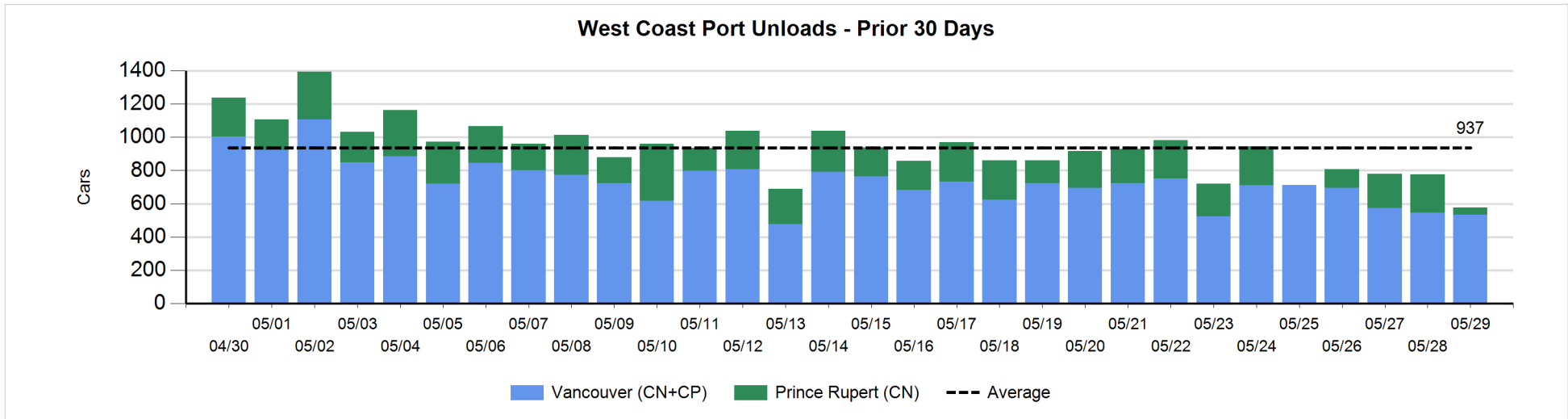
**Change in Loads Not Moving 48 Hours or More - 5/29/2019**

	E Canada	Prince Rupert	Thunder Bay	USA/MEX	Vancouver	Total
<b>CN</b>						
Origin		0	-53	-6	-51	-110
Enroute	-1	1	0	-4	-1	-5
Destination	-35		-2	3	46	12
	-36	1	-55	-7	-6	-103
<b>CP</b>						
Origin	-1		148	-11	-4	132
Enroute			1	69	-55	15
Destination			-49		-30	-79
	-1		100	58	-89	68
<b>US Rail / Short Line</b>						
Origin						
Enroute				1		1
Destination	-1			-1	-10	-12
	-1			0	-10	-11



Port Unloads - 5/29/2019

	Prince Rupert	Vancouver	West Coast Total	Thunder Bay	Total
CN	45	143	188	85	273
CP		389	389	79	468
	45	532	577	164	741





**Port Terminal Status**

**Vancouver**

Daily Activity for 5/29/2019

	Cars Arrived	Cars Received in Interchange	Cars Delivered in Interchange	Cars Placed for Unloading	Loads on Wheels at Destination As of 5/29/2019
CN	34	3	8	122	255
CP	402		5	544	579
SRY	2	10		17	37

**Port Unloads**

	05/29	05/28	Week To Date	Last Week
CN	143	170	430	1,751
CP	389	377	1,222	3,063
SRY	14	8	28	43

**Age Profile of Loaded Cars Waiting Placement for Unloading**

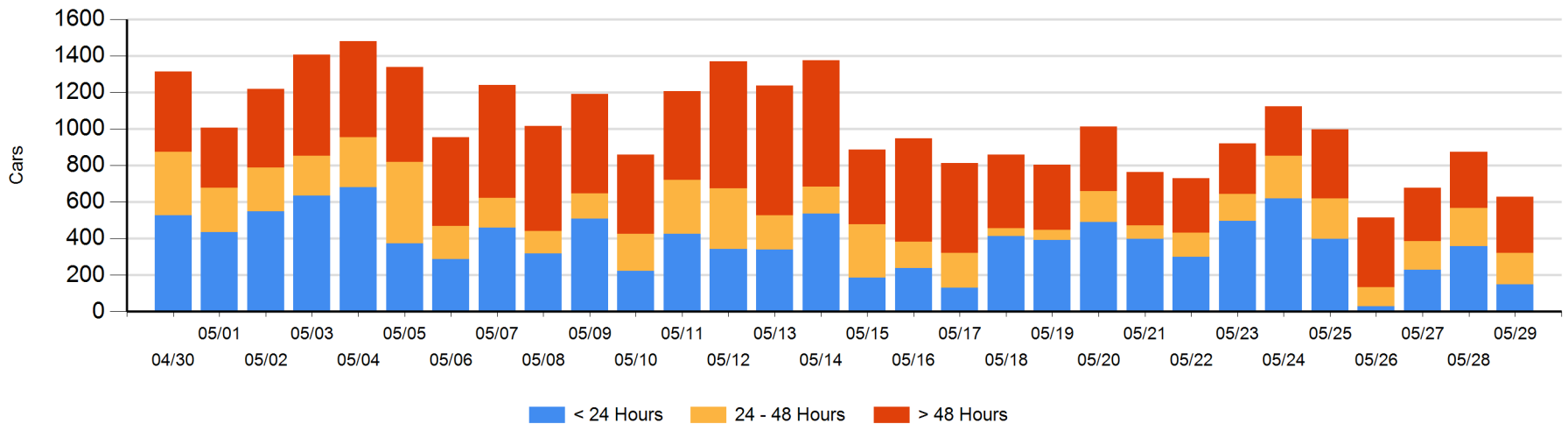
**Today**

	< 24 Hrs	24 - 48 Hrs	> 48-72 Hrs	> 72 Hrs	Total On Hand
CN	34	102	103	22	261
CP	113	72	106	75	366
SRY	1				1

**Change in Last 24 Hours**

	< 24 Hrs	24-48 Hrs	48 - 72 Hrs	> 72 Hrs
CN	-183	-2	103	-11
CP	-27	-35	68	-159
SRY	1			

**Loaded Cars on Hand Vancouver Waiting for Placement - Last 30 Days All Railways**



**Port Terminal Status**

**Prince Rupert**

Daily Activity for 5/29/2019

Cars Arrived	Cars Received in Interchange	Cars Delivered in Interchange	Cars Placed for Unloading	Loads on Wheels at Destination As of 5/29/2019
CN				

**Port Unloads**

	05/29	05/28	Week To Date	Last Week
CN	45	231	482	1,201

**Age Profile of Loaded Cars Waiting Placement for Unloading**

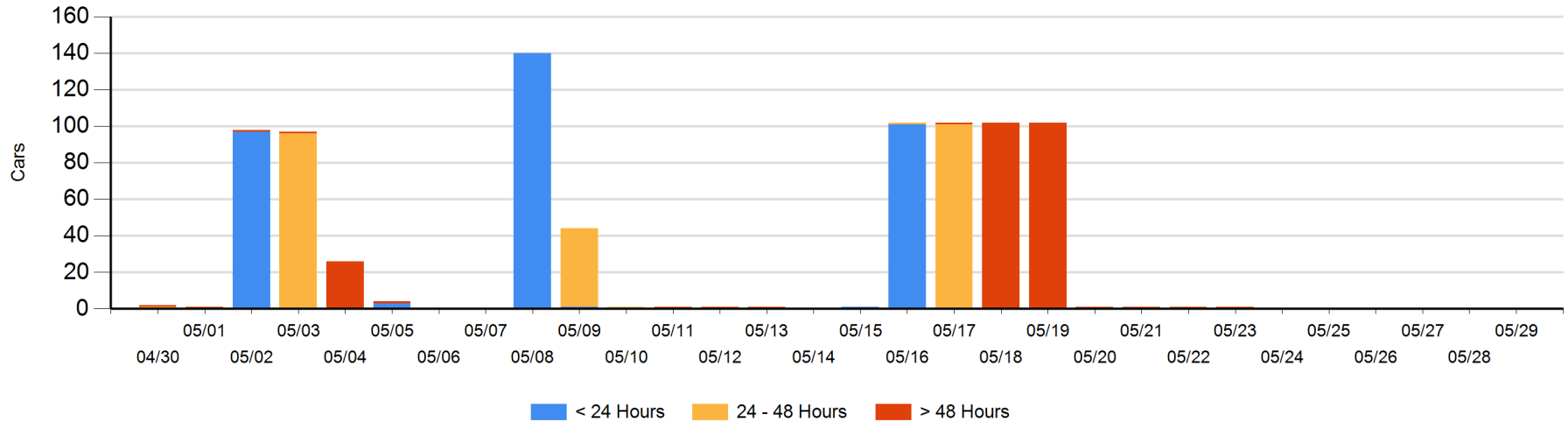
**Today**

< 24 Hrs	24 - 48 Hrs	> 48-72 Hrs	> 72 Hrs	Total On Hand
CN				0

**Change in Last 24 Hours**

< 24 Hrs	24-48 Hrs	48 - 72 Hrs	> 72 Hrs
CN			

Loaded Cars on Hand Prince Rupert Waiting for Placement - Last 30 Days All Railways



**Port Terminal Status**

**Thunder Bay**

Daily Activity for 5/29/2019

	Cars Arrived	Cars Received in Interchange	Cars Delivered in Interchange	Cars Placed for Unloading	Loads on Wheels at Destination As of 5/29/2019
CN	78			62	144
CP	155			51	202

**Port Unloads**

	05/29	05/28	Week To Date	Last Week
CN	85	129	257	288
CP	79	65	422	862

**Age Profile of Loaded Cars Waiting Placement for Unloading**

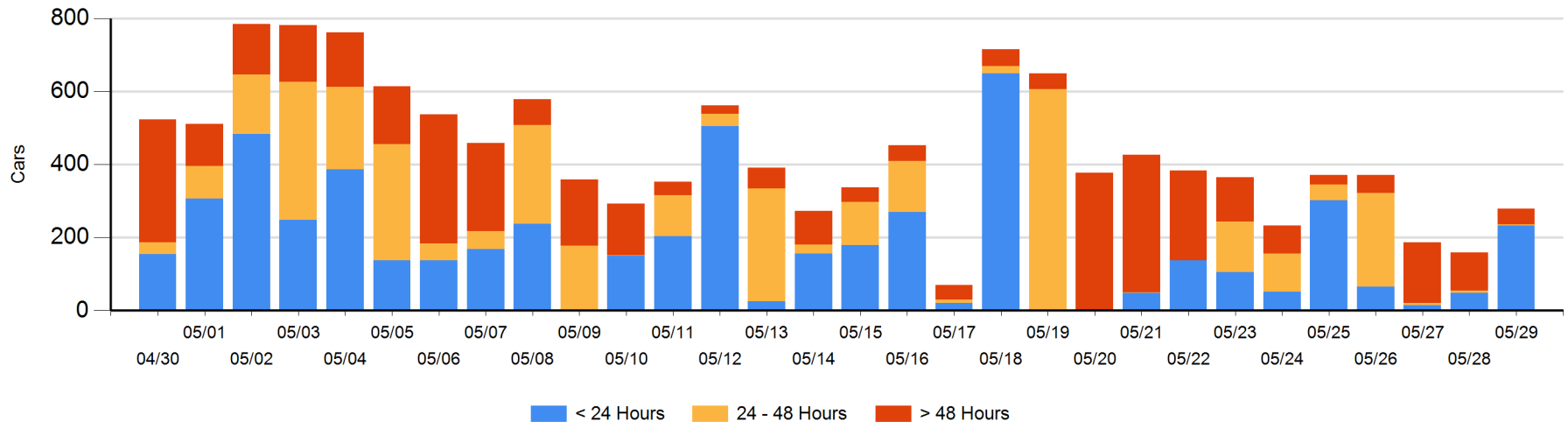
**Today**

	< 24 Hrs	24 - 48 Hrs	> 48-72 Hrs	> 72 Hrs	Total On Hand
CN	78				78
CP	155	3	2	41	201

**Change in Last 24 Hours**

	< 24 Hrs	24-48 Hrs	48 - 72 Hrs	> 72 Hrs
CN	32	-3		-13
CP	152	1	-4	-45

**Loaded Cars on Hand Thunder Bay Waiting for Placement - Last 30 Days All Railways**



## Measurement Definitions

Loads on Wheels	<p>Count of loaded rail cars including all rail cars that have been released loaded at origin and have not been reported by the railway as unloaded at destination.</p> <p>Counts include all rail cars (hopper cars and boxcars) moving within a pipeline.</p>
Loads Not Moving	<p>Loaded rail cars for which the railways have not reported a movement event for 48 hours or more whether the rail car is at origin, enroute or at destination.</p>
Port Unloads	<p>Count of rail cars reported by railways as unloaded at the western port destinations of Vancouver, Prince Rupert and Thunder Bay.</p> <p>Unload counts include all rail cars (hopper cars and boxcars) unloaded by all receivers including major port terminals, transloaders and other receivers.</p>
Cars Arrived	<p>Count of rail cars reported as arrived at the destination railway terminal.</p>
Cars Received in Interchange	<p>Count of rail cars received in interchange by each railway within a destination railway terminal. Interchange activity is tracked for the Vancouver and Thunder Bay pipelines as applicable.</p>
Cars Delivered in Interchange	<p>Count of rail cars delivered in interchange by each railway within a destination railway terminal. Interchange activity is tracked for the Vancouver and Thunder Bay pipelines as applicable.</p>
Cars Placed for Unloading	<p>Count of rail cars reported by the railways as placed loaded at the receiver's facility for unloading.</p>
Loads on Wheels at Destination	<p>Count of rail cars that remain under load within the destination railway terminal including rail cars that have been reported as placed for unloading but not yet reported as unloaded.</p>
Waiting Placement for Unloading	<p>Count of rail cars that have been reported as arrived at the destination railway terminal but not reported as placed for unloading by the railway.</p> <p>For the Ports of Vancouver, Prince Rupert and Thunder Bay the count of rail cars waiting placement for unloading is categorized by age – i.e. the elapsed time from arrival at destination to the current report date.</p>