

SPEED READ

- Loads on wheels decreased overnight, reflecting lower CP volumes offset by an increase in CN volumes. On a net basis, volumes fell due to lower volumes across all corridors - Vancouver, Thunder Bay, Prince Rupert, USA/MEX and E. Canada.
- Network fluidity deteriorated overnight, led by a rise in idle car counts on CN by 10% (+98) offset by a decline in idle car counts on CP by 3% (-52). The total count of cars for 4+ days on both railways increased 21% (+242) overnight - presently at 1,410 cars, the highest seen in the last 30 days.
- Week 14 unloads finished ahead of prior week's performance by 400 unloads, reflecting an improvement in week over week performance at Thunder Bay and Prince Rupert offset by reduced unloads at Vancouver.

Loads on Wheels

- Loads on wheels decreased 5% (-587) overnight, due to reduced traffic on CP offset by higher traffic on CN - combined total at 11,108 and 2% below the trailing 30-day average.
- On a net basis, the decline in loads on wheels indicates lower volumes across all corridors - Vancouver, Thunder Bay, Prince Rupert, USA/MEX and E. Canada.
- CN volumes increased 2% (+103) overnight, with higher volumes in the Vancouver, Thunder Bay and USA/MEX corridors offset by reduced volumes in the Prince Rupert and E. Canada corridors. System wide CN loads on wheels currently at 5,625 and in line with the trailing 30-day average.
- CP volumes decreased significantly by 12% (-691) overnight, driven by a decline in traffic across all corridors other than E. Canada. CP system wide loads on wheels presently at 5,138 and 6% below the trailing 30-day average.
- Vancouver currently at 6,439, decreased for the third consecutive day, down 5% (-352) overnight, now 5% below the trailing 30-day average.
- The Prince Rupert pipeline currently at 1,323, fell significantly by 13% (-205) overnight, and 7% below the trailing 30 day-average.
- Thunder Bay volumes decreased slightly by 1% (-12) overnight - currently at 1,677 and in line with the trailing 30-day average, with 67% of traffic moving on CP.

Hopper Car Rationing

- CP has rationed 8 hopper cars for week 13.

Loads Not Moving

- **The count of cars not moving for 48+ hours increased by 2% (+46) overnight and have now increased for the third consecutive day, reflecting higher counts on CN offset by lower counts on CP. Idle car counts currently at 2,876 and 27% above the trailing 30-day average.**
- CN
 - **The count of idle cars for 48+ hours increased 10% (+98) overnight - currently at 1,046 cars.**
 - The number of cars idle for 4+ days declined 11% (-54) overnight - currently at 447 cars.
 - The count of cars not moving for 7+ days gained 43% (+60) overnight - currently at 198 cars.
 - Vancouver represents 56% of all idle cars.
 - In total 30% of all idle cars are dwelling at origin locations.
- CP
 - **CP idle car counts for 48+ hours declined 3% (-52) overnight - currently at 1,830 cars.**
 - The number of cars idle for 4+ days gained 44% (+296) overnight - presently at 963 cars.

- The number of cars idle for 7+ days increased for the third consecutive day, up 55% (+103) overnight - currently at 289 cars, the highest seen in the last 30 days.
- Vancouver accounts for 50% of all idle cars.
- In total 64% of all idle cars are dwelling at origin locations.

Port Performance

- CN and CP reported a total of 1,254 cars unloaded at the three major ports, now in line with the trailing 30-day average. Week 14 unloads concluded ahead of last week's pace by 400 unloads, reflecting higher unloads at Thunder Bay and Prince Rupert offset by reduced unloads at Vancouver.
- Vancouver
 - 749 unloads reported by CN and CP at the Port of Vancouver; CN - 332 and CP - 417. Week 14 unloads ended behind last week's performance by around 650 unloads.
 - There are more than 2,250 cars on site at Vancouver with more than 900 cars arriving at the port in the last 24 hours.
 - CN and CP have around 1,200 cars in British Columbia en route to Vancouver, with nearly 550 cars at Kamloops and west, and 59% of traffic moving on CN.
- Prince Rupert
 - Prince Rupert reported 308 unloads, finished ahead of last week's unloads by 400 unloads.
 - Loads on wheels now above 1,000 cars - presently at 1,323 cars.
 - There are around 350 cars west of Jasper en route to Prince Rupert.
 - There are 100 cars on site at Prince Rupert with 150 cars arriving at the port in the last 24 hours. Given the structure of the pipeline, there appears to be sufficient cars available to support unloads in the next few days.
- Thunder Bay
 - 197 unloads were reported at Thunder Bay yesterday. Week 14 unloads ended ahead of last week's pace by 650 unloads.
 - There are around 650 cars on site at Thunder Bay with more than 150 cars arriving at the port in the prior 24 hours.
 - There are around 250 cars en route to Thunder Bay from Winnipeg and east. Cars on hand and those en route should support unloads in the next few days.

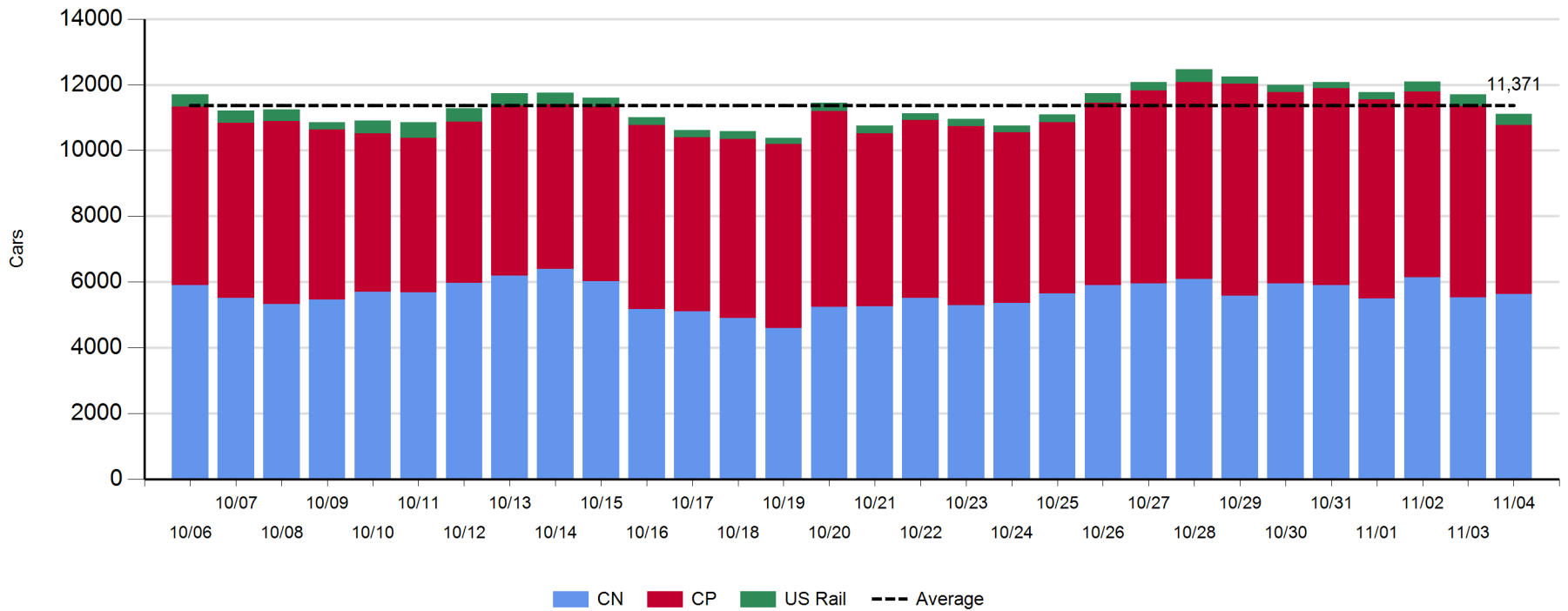
Daily Loads on Wheels - 11/4/2018

	E Canada	Prince Rupert	Thunder Bay	USA/MEX	Vancouver	Total
CN	373	1,323	553	332	3,044	5,625
CP	139		1,124	522	3,353	5,138
Short Line	21				16	37
US Rail				282	26	308
	533	1,323	1,677	1,136	6,439	11,108

Change in Loads on Wheels - Prior 24 Hours

	E Canada	Prince Rupert	Thunder Bay	USA/MEX	Vancouver	Total
CN	-17	-205	157	3	165	103
CP	2		-169	-7	-517	-691
Short Line	0				0	0
US Rail				1	0	1
	-15	-205	-12	-3	-352	-587

Loads on Wheels - Prior 30 Days

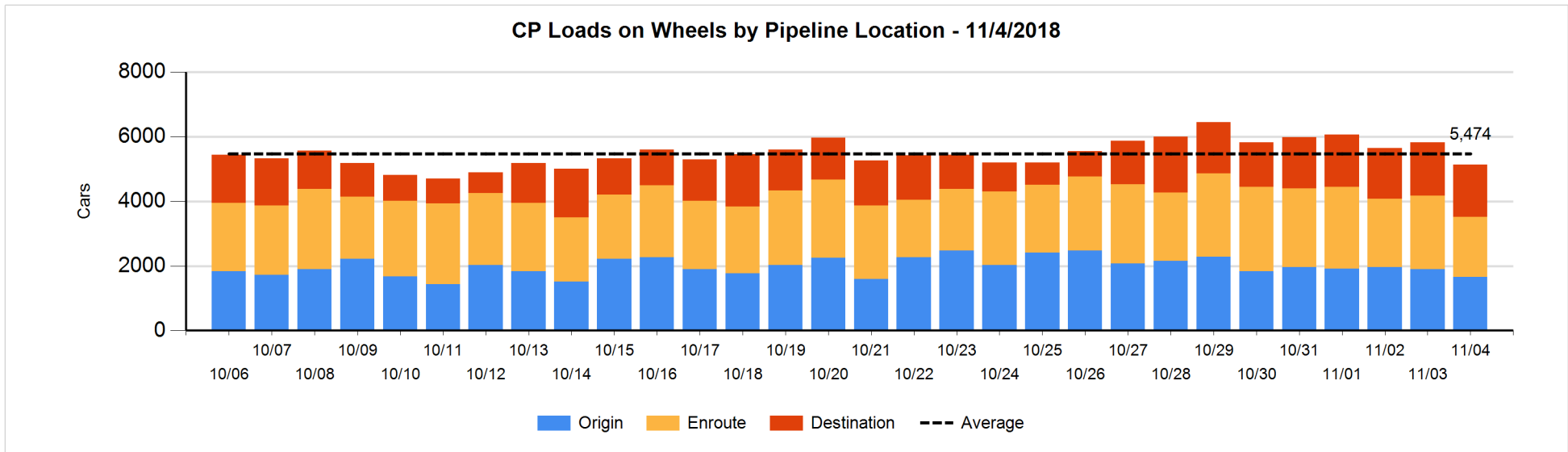
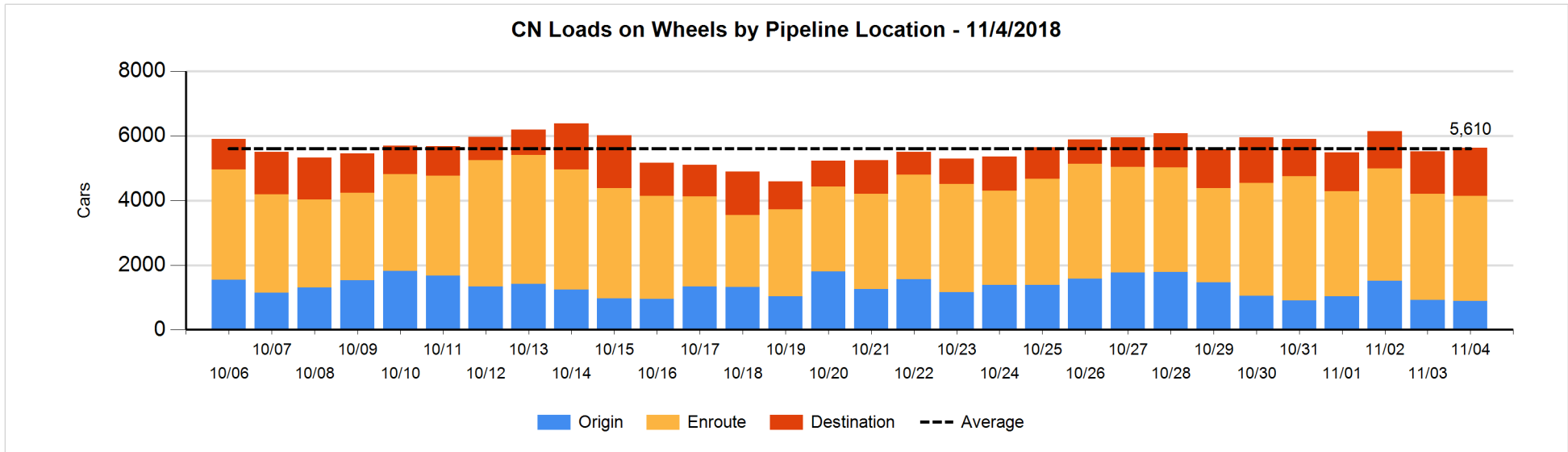


Daily Loads on Wheels By Pipeline Location - 11/4/2018

	E Canada	Prince Rupert	Thunder Bay	USA/MEX	Vancouver	Total
CN						
Origin	7	351	185	102	247	892
Enroute	343	865	219	208	1,617	3,252
Destination	23	107	149	22	1,180	1,481
	373	1,323	553	332	3,044	5,625
CP						
Origin	78		314	173	1,090	1,655
Enroute	61		328	264	1,216	1,869
Destination			482	85	1,047	1,614
	139		1,124	522	3,353	5,138
US Rail / Short Line						
Origin						
Enroute				203		203
Destination	21			79	42	142
	21			282	42	345

Change in Daily Loads on Wheels By Pipeline Location - Prior 24 Hours

	E Canada	Prince Rupert	Thunder Bay	USA/MEX	Vancouver	Total
CN						
Origin	-49	22	185	1	-184	-25
Enroute	34	-75	0	2	2	-37
Destination	-2	-152	-28	0	347	165
	-17	-205	157	3	165	103
CP						
Origin	0		-111	-1	-123	-235
Enroute	5		-56	-30	-330	-411
Destination	-3		-2	24	-64	-45
	2		-169	-7	-517	-691
US Rail / Short Line						
Origin						
Enroute	-4			-10		-14
Destination	4			11	0	15
	0			1	0	1

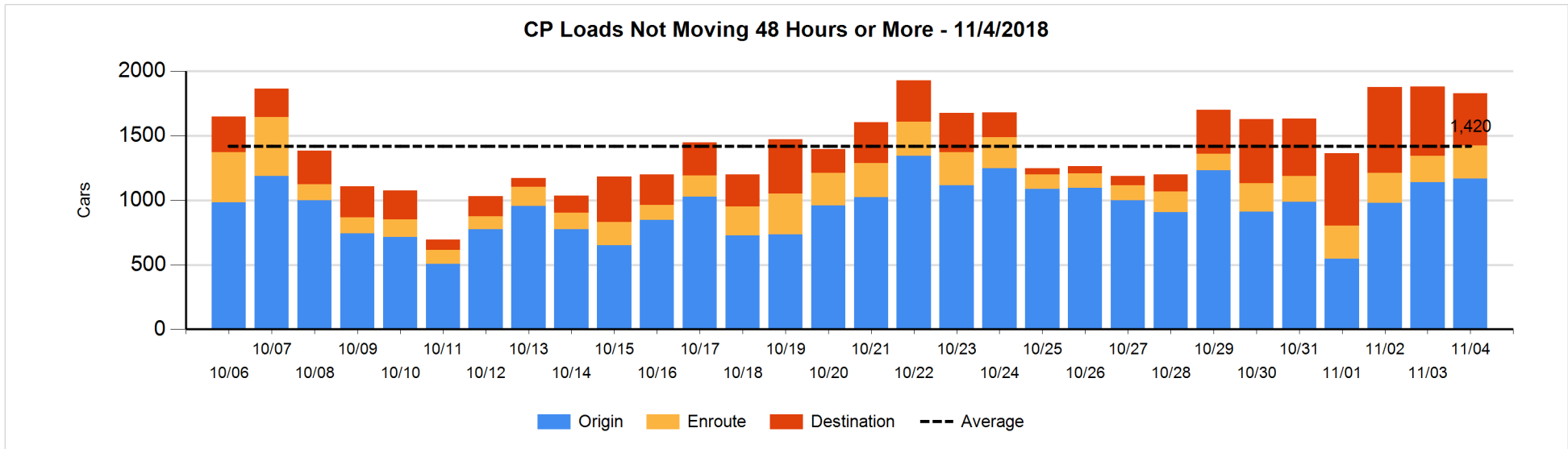
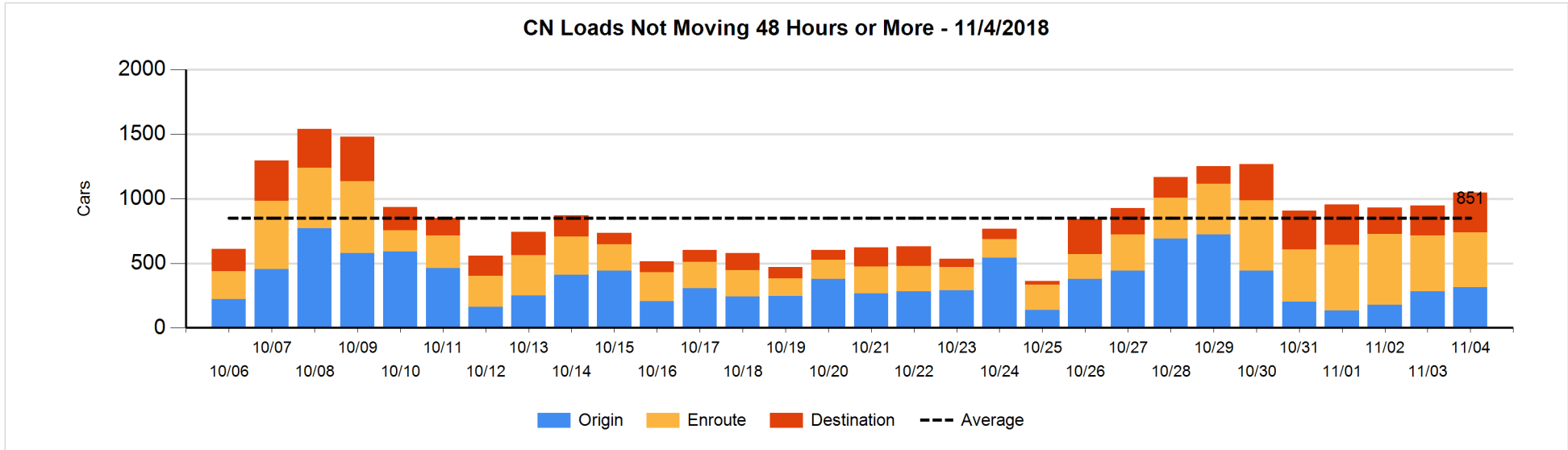


Loads Not Moving 48 Hours or More - 11/4/2018

	E Canada	Prince Rupert	Thunder Bay	USA/MEX	Vancouver	Total
CN						
Origin	7	144		99	63	313
Enroute	67	19		66	272	424
Destination	1	20	16	22	250	309
	75	183	16	187	585	1046
CP						
Origin	78		314	173	602	1167
Enroute	12		4	153	90	259
Destination			190		214	404
	90		508	326	906	1830
US Rail / Short Line						
Origin						
Enroute				128		128
Destination	17			43	3	63
	17			171	3	191

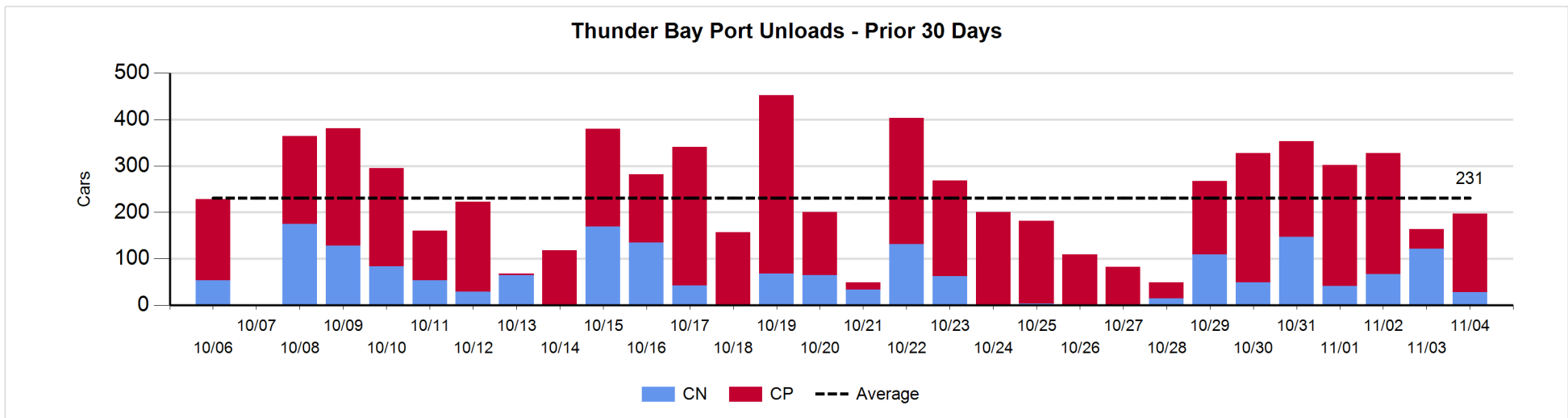
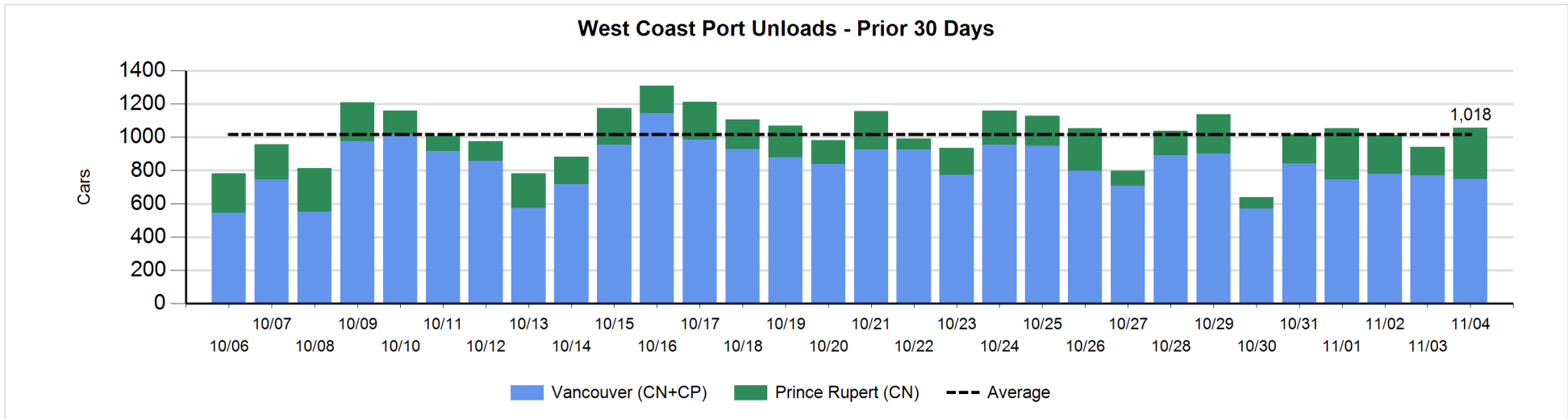
Change in Loads Not Moving 48 Hours or More - 11/4/2018

	E Canada	Prince Rupert	Thunder Bay	USA/MEX	Vancouver	Total
CN						
Origin	3	22		99	-95	29
Enroute	6	5		13	-31	-7
Destination	-21	-24	-1	10	112	76
	-12	3	-1	122	-14	98
CP						
Origin	0		171	3	-146	28
Enroute	0		-61	56	58	53
Destination			-49		-84	-133
	0		61	59	-172	-52
US Rail / Short Line						
Origin						
Enroute	-3			92		89
Destination	17			4	1	22
	14			96	1	111



Port Unloads - 11/4/2018

	Prince Rupert	Vancouver	West Coast Total	Thunder Bay	Total
CN	308	332	640	28	668
CP		417	417	169	586
	308	749	1,057	197	1,254



Port Terminal Status

Vancouver

Daily Activity for 11/4/2018

	Cars Arrived	Cars Received in Interchange	Cars Delivered in Interchange	Cars Placed for Unloading	Loads on Wheels at Destination As of 11/4/2018
CN	429	355	169	407	1,180
CP	485	169	355	552	1,047
SRY					16

Port Unloads

	11/04	11/03	Week To Date	Last Week
CN	332	382	2,382	2,848
CP	417	388	2,975	3,150
SRY		7	36	25

Age Profile of Loaded Cars Waiting Placement for Unloading

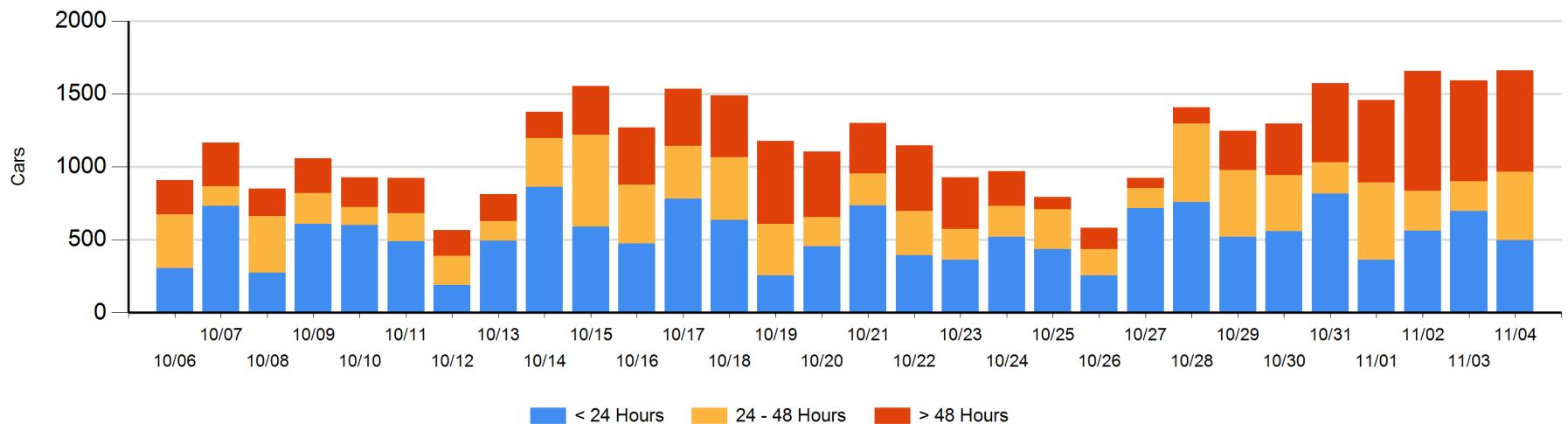
Today

	< 24 Hrs	24 - 48 Hrs	> 48-72 Hrs	> 72 Hrs	Total On Hand
CN	378	137	23	274	812
CP	119	334	156	241	850
SRY				1	1

Change in Last 24 Hours

	< 24 Hrs	24-48 Hrs	48 - 72 Hrs	> 72 Hrs
CN	91	114	-129	92
CP	-292	154	108	-66
SRY				0

Loaded Cars on Hand Vancouver Waiting for Placement - Last 30 Days All Railways



Port Terminal Status

Prince Rupert

Daily Activity for 11/4/2018

	Cars Arrived	Cars Received in Interchange	Cars Delivered in Interchange	Cars Placed for Unloading	Loads on Wheels at Destination As of 11/4/2018
CN	159			209	107

Port Unloads

	11/04	11/03	Week To Date	Last Week
CN	308	172	1,502	1,110

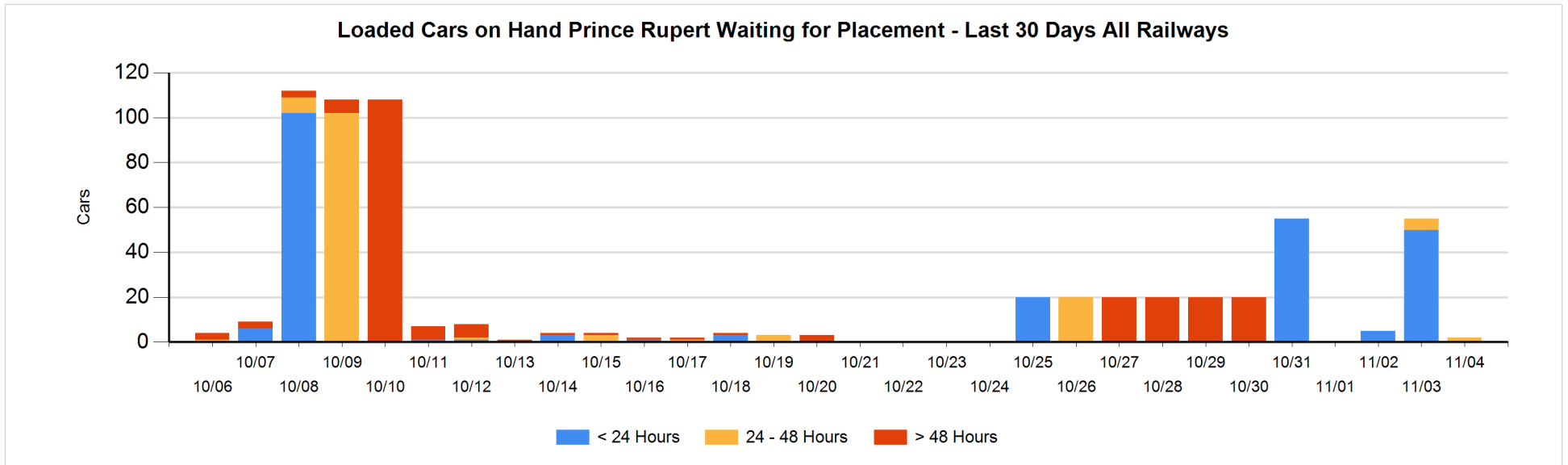
Age Profile of Loaded Cars Waiting Placement for Unloading

Today

	< 24 Hrs	24 - 48 Hrs	> 48-72 Hrs	> 72 Hrs	Total On Hand
CN		2			2

Change in Last 24 Hours

	< 24 Hrs	24-48 Hrs	48 - 72 Hrs	> 72 Hrs
CN	-50	-3		



Port Terminal Status

Thunder Bay

Daily Activity for 11/4/2018

	Cars Arrived	Cars Received in Interchange	Cars Delivered in Interchange	Cars Placed for Unloading	Loads on Wheels at Destination As of 11/4/2018
CN					149
CP	167			162	482

Port Unloads

	11/04	11/03	Week To Date	Last Week
CN	28	121	562	213
CP	169	43	1,375	1,083

Age Profile of Loaded Cars Waiting Placement for Unloading

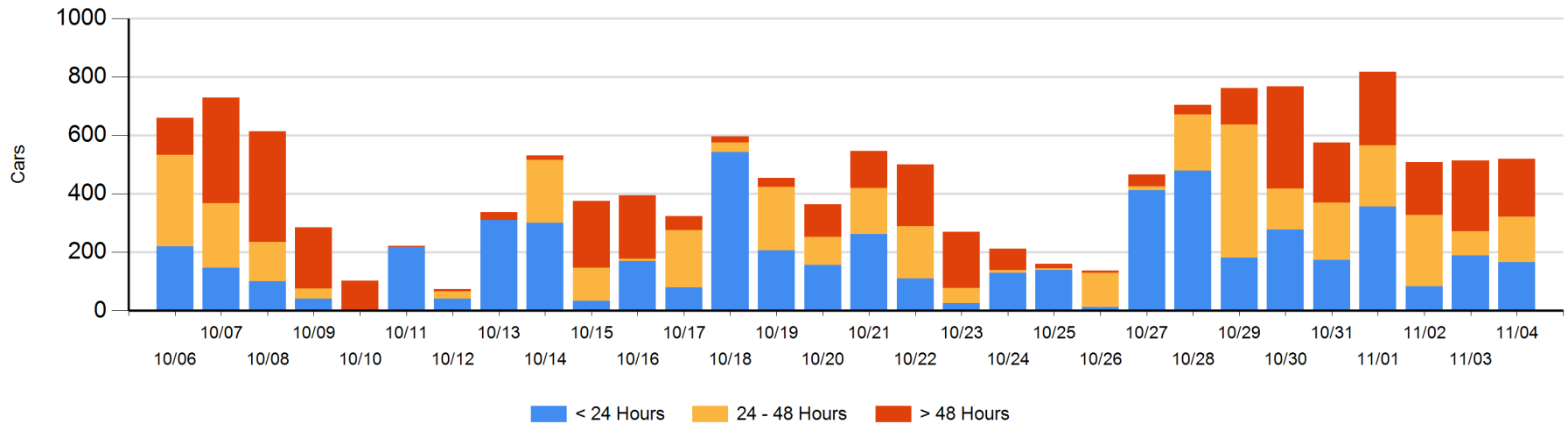
Today

	< 24 Hrs	24 - 48 Hrs	> 48-72 Hrs	> 72 Hrs	Total On Hand
CN		129	1	14	144
CP	167	26	50	132	375

Change in Last 24 Hours

	< 24 Hrs	24-48 Hrs	48 - 72 Hrs	> 72 Hrs
CN	-129	128	-13	14
CP	107	-56	-104	58

Loaded Cars on Hand Thunder Bay Waiting for Placement - Last 30 Days All Railways



Measurement Definitions

Loads on Wheels	<p>Count of loaded rail cars including all rail cars that have been released loaded at origin and have not been reported by the railway as unloaded at destination.</p> <p>Counts include all rail cars (hopper cars and boxcars) moving within a pipeline.</p>
Loads Not Moving	<p>Loaded rail cars for which the railways have not reported a movement event for 48 hours or more whether the rail car is at origin, enroute or at destination.</p>
Port Unloads	<p>Count of rail cars reported by railways as unloaded at the western port destinations of Vancouver, Prince Rupert and Thunder Bay.</p> <p>Unload counts include all rail cars (hopper cars and boxcars) unloaded by all receivers including major port terminals, transloaders and other receivers.</p>
Cars Arrived	<p>Count of rail cars reported as arrived at the destination railway terminal.</p>
Cars Received in Interchange	<p>Count of rail cars received in interchange by each railway within a destination railway terminal. Interchange activity is tracked for the Vancouver and Thunder Bay pipelines as applicable.</p>
Cars Delivered in Interchange	<p>Count of rail cars delivered in interchange by each railway within a destination railway terminal. Interchange activity is tracked for the Vancouver and Thunder Bay pipelines as applicable.</p>
Cars Placed for Unloading	<p>Count of rail cars reported by the railways as placed loaded at the receiver's facility for unloading.</p>
Loads on Wheels at Destination	<p>Count of rail cars that remain under load within the destination railway terminal including rail cars that have been reported as placed for unloading but not yet reported as unloaded.</p>
Waiting Placement for Unloading	<p>Count of rail cars that have been reported as arrived at the destination railway terminal but not reported as placed for unloading by the railway.</p> <p>For the Ports of Vancouver, Prince Rupert and Thunder Bay the count of rail cars waiting placement for unloading is categorized by age – i.e. the elapsed time from arrival at destination to the current report date.</p>