

## SPEED READ

- Loads on wheels decreased overnight, reflecting a decline in both CN and CP volumes. On a net basis, volumes declined due to lower volumes across all corridors other than E. Canada.
- Network fluidity deteriorated overnight, led by an increase in idle car counts on both CN and CP by 46% (+280) and 23% (+207), respectively. The total count of cars for 4+ days on both railways increased slightly by 1% (+8) overnight - now at 1,015 cars.
- Three days in Week 15 unloads now ahead of prior week's performance by about 400 unloads, marking improved week over week performance across all three major ports - Vancouver, Thunder Bay and Prince Rupert.

---

## Loads on Wheels

- Loads on wheels fell 4% (-466) overnight, due to lower volumes on both CN and CP - combined total at 10,958 and 4% below the trailing 30-day average.
- On a net basis, the decline in loads on wheels indicates reduced volumes across all corridors other than E. Canada.
- CN volumes fell 3% (-165) overnight, with lower traffic in the Thunder Bay, Prince Rupert and USA/MEX corridors offset by higher traffic in the E. Canada and Vancouver corridors. System wide CN loads on wheels presently at 5,365 and 4% below the trailing 30-day average.
- CP volumes declined 6% (-310) overnight, driven by a decline in traffic across all corridors - Vancouver, Thunder Bay, USA/MEX and E. Canada. CP system wide loads on wheels presently at 5,318 and 3% below the trailing 30-day average.
- Vancouver currently at 7,020, fell 2% (-157) overnight, now 3% above the trailing 30-day average.
- The Prince Rupert pipeline presently at 1,364, declined 3% (-49) overnight, and 3% below the trailing 30 day-average.
- Thunder Bay volumes fell significantly by 17% (-239) overnight - presently at 1,148, the lowest seen in the last 30 days, and 31% below the trailing 30-day average, with 81% of traffic moving on CP.

## Hopper Car Rationing

- CP rationed 8 hopper cars in week 13. CN rationed 104 hopper cars in week 14.

## Loads Not Moving

- **The count of cars not moving for 48+ hours increased 32% (+487) overnight, marking higher counts on both CN and CP. Idle car counts currently at 2,018 and 8% below the trailing 30 day-average.**
- CN
  - **The count of idle cars for 48+ hours increased significantly by 46% (+280) overnight - currently at 893 cars.**
  - The number of cars idle for 4+ days declined 24% (-94) overnight - currently at 300 cars.
  - The count of cars not moving for 7+ days declined 28% (-93) overnight - currently at 241 cars.
  - Vancouver represents 64% of all idle cars.
  - In total 50% of all idle cars are dwelling at origin locations.
- CP
  - **CP idle car counts for 48+ hours rose 23% (+207) overnight - presently at 1,125 cars.**
  - The number of cars idle for 4+ days increased 17% (+102) overnight - now at 715 cars.
  - The number of cars idle for 7+ days surged by 146% (+190) overnight - presently at 320 cars, the highest seen in the last 30 days.
  - Vancouver accounts for 52% of all idle cars.

- In total 72% of all idle cars are dwelling at origin locations.

### **Port Performance**

- CN and CP reported a total of 1,371 cars unloaded at the three major ports, now 7% above the trailing 30-day average. Three days in Week 15 unloads now ahead of last week's pace by nearly 400 unloads, marking higher unloads across all three major ports - Vancouver, Thunder Bay and Prince Rupert.
- Vancouver
  - 808 unloads reported by CN and CP at the Port of Vancouver; CN - 356 and CP - 452. Three days in Week 15 unloads are tracking ahead of last week's performance by 300 unloads.
  - There are 1,600 cars on site at Vancouver with around 800 cars arriving at the port in the last 24 hours.
  - CN and CP have 1,400 cars in British Columbia en route to Vancouver, with more than 600 cars at Kamloops and west, and 52% of traffic moving on CN.
- Prince Rupert
  - Prince Rupert reported 213 unloads, now ahead of last week's unloads after three days by more than 50 unloads.
  - Loads on wheels now above 1,000 cars - currently at 1,364 cars.
  - There are more than 150 cars west of Jasper en route to Prince Rupert.
  - There are more than 300 cars on site at Prince Rupert with 300 cars arriving at the port in the last 24 hours. Given the structure of the pipeline, there appears to be sufficient cars available to support unloads in the next few days.
- Thunder Bay
  - 350 unloads were reported at Thunder Bay yesterday. Three days in Week 15 unloads are tracking ahead of last week's pace by 16 unloads.
  - There are 400 cars on site at Thunder Bay with 200 cars arriving at the port in the prior 24 hours.
  - There are more than 100 cars en route to Thunder Bay from Winnipeg and east. Cars on hand and those en route should support unloads in the next few days.

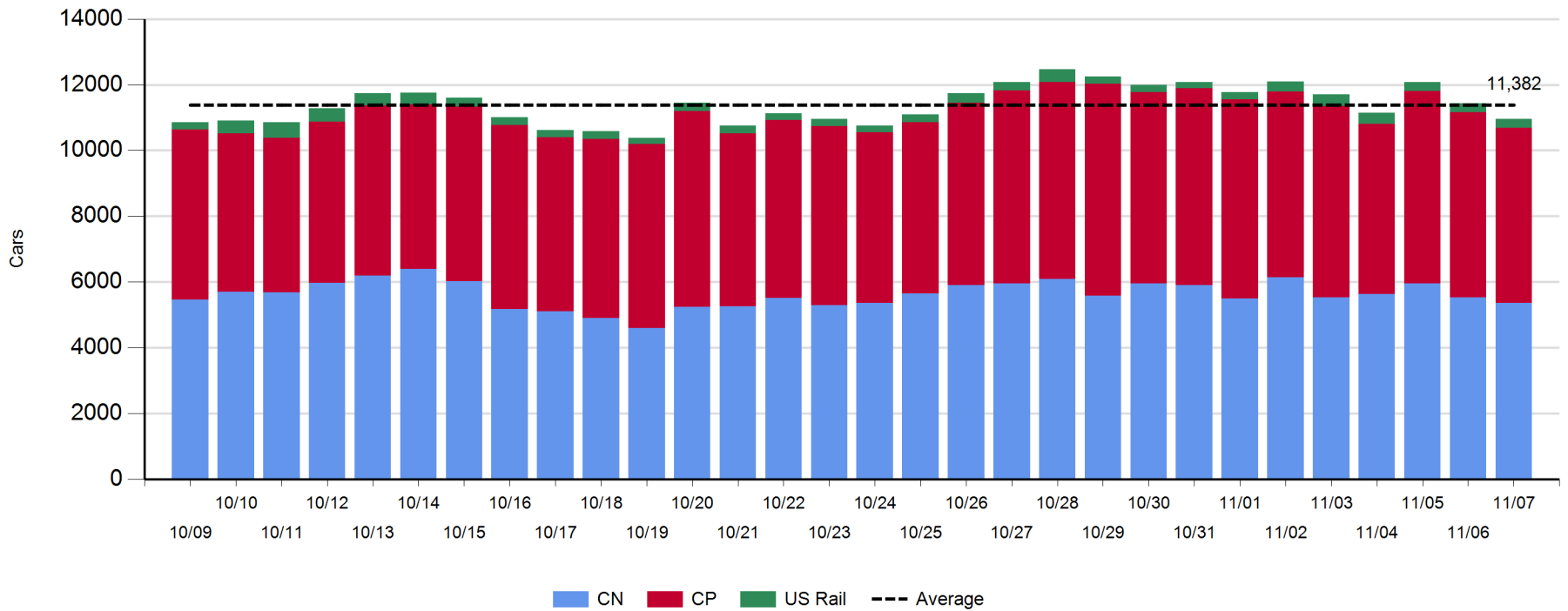
**Daily Loads on Wheels - 11/7/2018**

|            | E Canada | Prince Rupert | Thunder Bay | USA/MEX | Vancouver | Total  |
|------------|----------|---------------|-------------|---------|-----------|--------|
| CN         | 427      | 1,364         | 213         | 288     | 3,073     | 5,365  |
| CP         | 94       |               | 935         | 377     | 3,912     | 5,318  |
| Short Line | 44       |               |             |         | 35        | 79     |
| US Rail    |          |               |             | 196     |           | 196    |
|            | 565      | 1,364         | 1,148       | 861     | 7,020     | 10,958 |

**Change in Loads on Wheels - Prior 24 Hours**

|            | E Canada | Prince Rupert | Thunder Bay | USA/MEX | Vancouver | Total |
|------------|----------|---------------|-------------|---------|-----------|-------|
| CN         | 72       | -49           | -176        | -37     | 25        | -165  |
| CP         | -26      |               | -63         | -38     | -183      | -310  |
| Short Line | 10       |               |             |         | 1         | 11    |
| US Rail    |          |               |             | -2      |           | -2    |
|            | 56       | -49           | -239        | -77     | -157      | -466  |

**Loads on Wheels - Prior 30 Days**

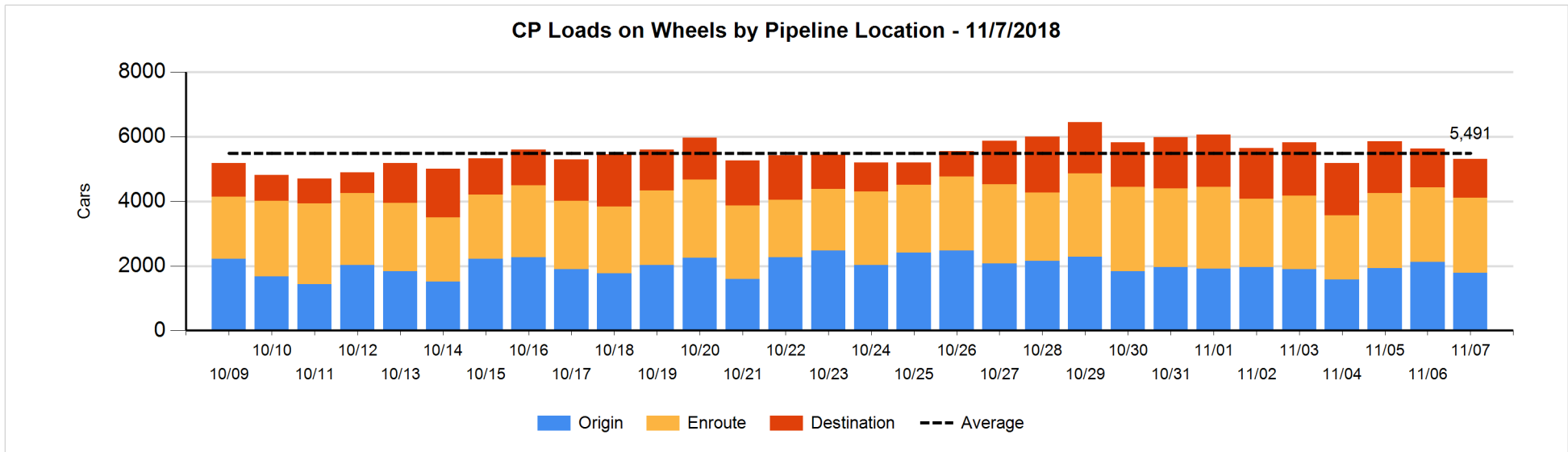
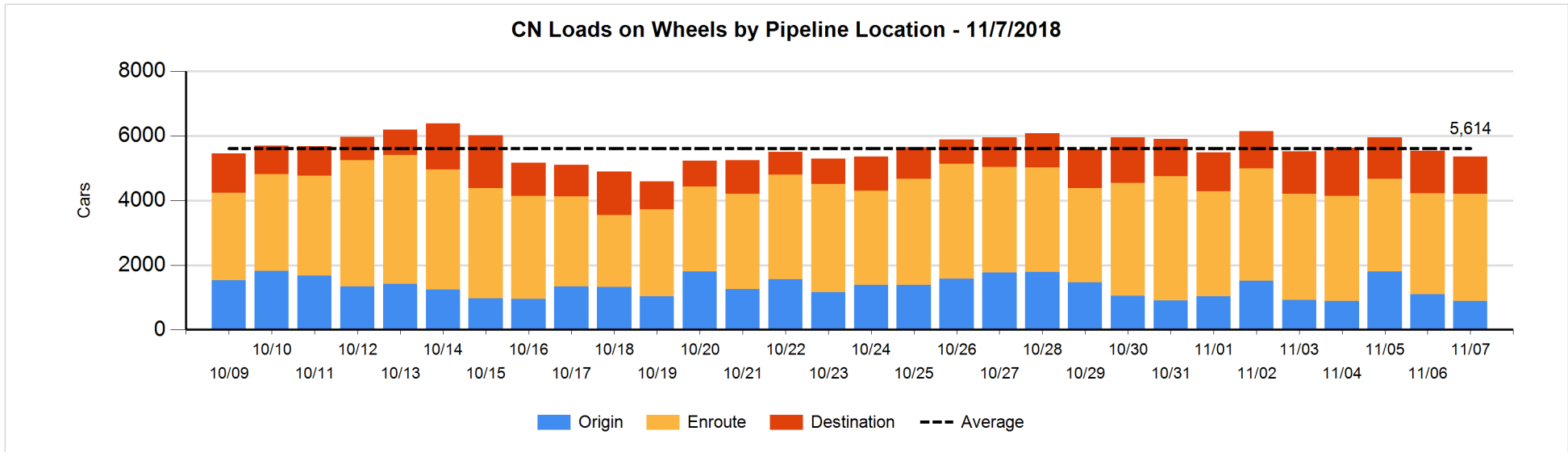


**Daily Loads on Wheels By Pipeline Location - 11/7/2018**

|                      | E Canada | Prince Rupert | Thunder Bay | USA/MEX | Vancouver | Total |
|----------------------|----------|---------------|-------------|---------|-----------|-------|
| CN                   |          |               |             |         |           |       |
| Origin               | 103      | 284           |             | 19      | 487       | 893   |
| Enroute              | 267      | 760           | 118         | 240     | 1,925     | 3,310 |
| Destination          | 57       | 320           | 95          | 29      | 661       | 1,162 |
|                      | 427      | 1,364         | 213         | 288     | 3,073     | 5,365 |
| CP                   |          |               |             |         |           |       |
| Origin               | 5        |               | 412         | 124     | 1,246     | 1,787 |
| Enroute              | 88       |               | 220         | 239     | 1,768     | 2,315 |
| Destination          | 1        |               | 303         | 14      | 898       | 1,216 |
|                      | 94       |               | 935         | 377     | 3,912     | 5,318 |
| US Rail / Short Line |          |               |             |         |           |       |
| Origin               |          |               |             |         |           |       |
| Enroute              | 4        |               |             | 106     |           | 110   |
| Destination          | 40       |               |             | 90      | 35        | 165   |
|                      | 44       |               |             | 196     | 35        | 275   |

**Change in Daily Loads on Wheels By Pipeline Location - Prior 24 Hours**

|                      | E Canada | Prince Rupert | Thunder Bay | USA/MEX | Vancouver | Total |
|----------------------|----------|---------------|-------------|---------|-----------|-------|
| CN                   |          |               |             |         |           |       |
| Origin               | 74       | -156          | -4          | 0       | -125      | -211  |
| Enroute              | 2        | 24            | -81         | -27     | 275       | 193   |
| Destination          | -4       | 83            | -91         | -10     | -125      | -147  |
|                      | 72       | -49           | -176        | -37     | 25        | -165  |
| CP                   |          |               |             |         |           |       |
| Origin               | -11      |               | 0           | -6      | -322      | -339  |
| Enroute              | -15      |               | -1          | -14     | 43        | 13    |
| Destination          | 0        |               | -62         | -18     | 96        | 16    |
|                      | -26      |               | -63         | -38     | -183      | -310  |
| US Rail / Short Line |          |               |             |         |           |       |
| Origin               |          |               |             |         |           |       |
| Enroute              | 2        |               |             | -27     |           | -25   |
| Destination          | 8        |               |             | 25      | 1         | 34    |
|                      | 10       |               |             | -2      | 1         | 9     |

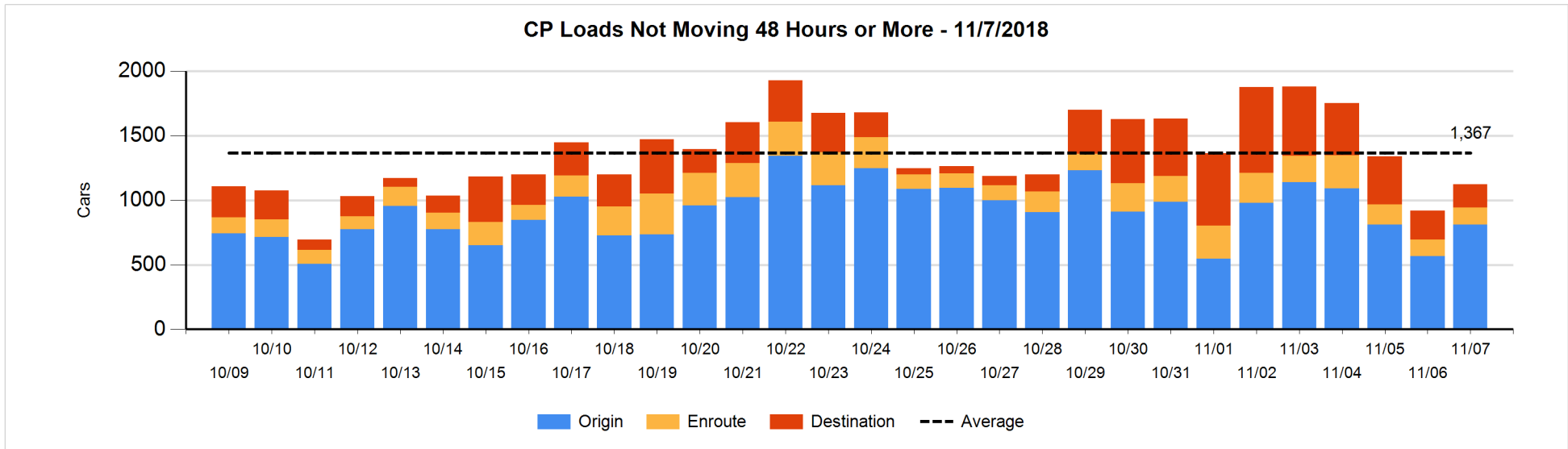
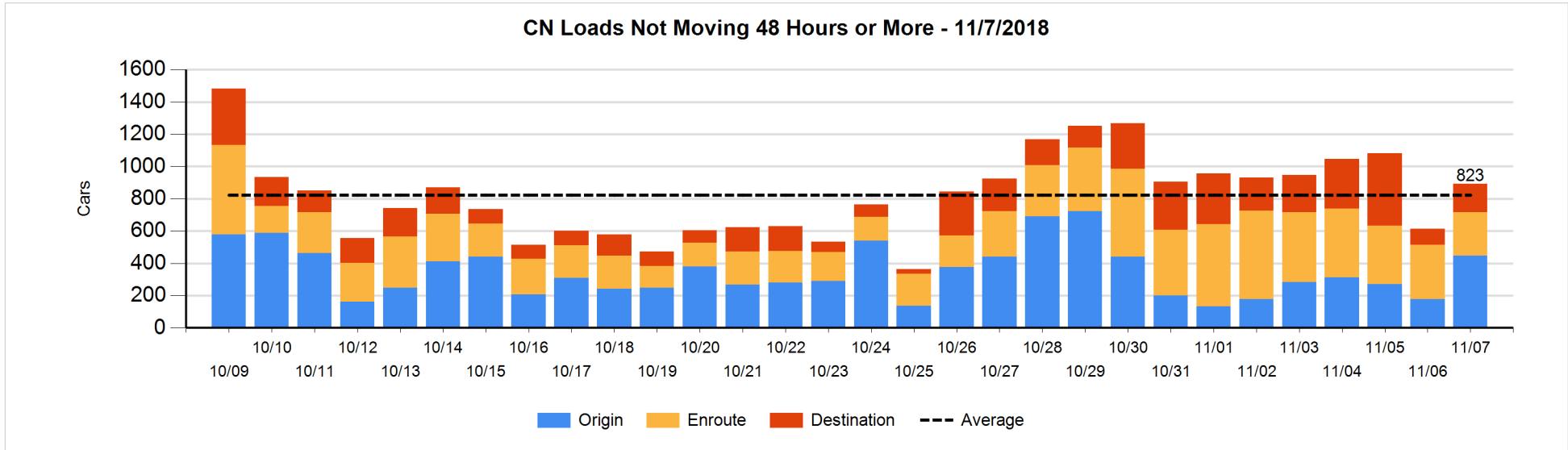


**Loads Not Moving 48 Hours or More - 11/7/2018**

|                             | E Canada | Prince Rupert | Thunder Bay | USA/MEX | Vancouver | Total |
|-----------------------------|----------|---------------|-------------|---------|-----------|-------|
| <b>CN</b>                   |          |               |             |         |           |       |
| Origin                      |          | 134           |             | 6       | 307       | 447   |
| Enroute                     | 45       | 18            |             | 46      | 161       | 270   |
| Destination                 | 33       | 1             | 37          | 4       | 101       | 176   |
|                             | 78       | 153           | 37          | 56      | 569       | 893   |
| <b>CP</b>                   |          |               |             |         |           |       |
| Origin                      | 5        |               | 299         | 118     | 387       | 809   |
| Enroute                     | 15       |               | 2           | 87      | 32        | 136   |
| Destination                 | 1        |               | 1           | 10      | 168       | 180   |
|                             | 21       |               | 302         | 215     | 587       | 1125  |
| <b>US Rail / Short Line</b> |          |               |             |         |           |       |
| Origin                      |          |               |             |         |           |       |
| Enroute                     |          |               |             | 57      |           | 57    |
| Destination                 |          |               |             | 47      | 2         | 49    |
|                             |          |               |             | 104     | 2         | 106   |

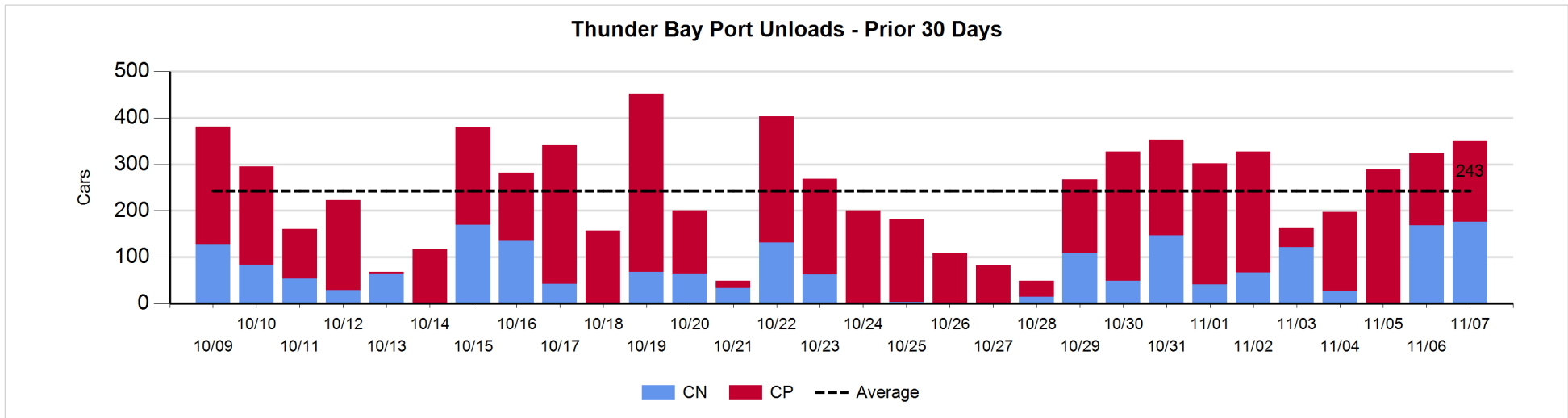
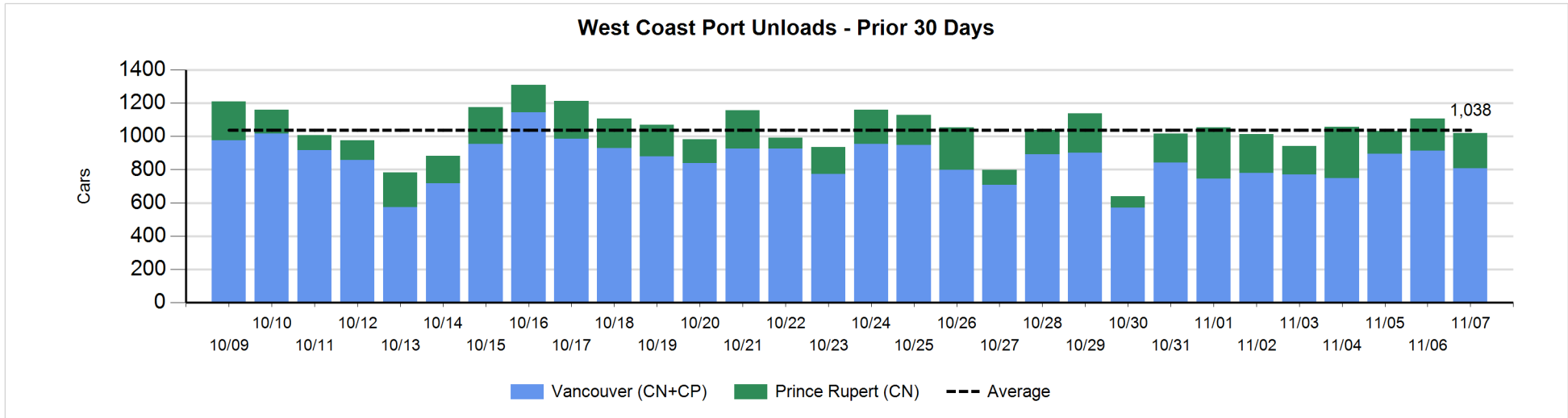
**Change in Loads Not Moving 48 Hours or More - 11/7/2018**

|                             | E Canada | Prince Rupert | Thunder Bay | USA/MEX | Vancouver | Total |
|-----------------------------|----------|---------------|-------------|---------|-----------|-------|
| <b>CN</b>                   |          |               |             |         |           |       |
| Origin                      |          | 13            |             | 4       | 253       | 270   |
| Enroute                     | 25       | 0             | -4          | -10     | -79       | -68   |
| Destination                 | 29       | 0             | 10          | -3      | 42        | 78    |
|                             | 54       | 13            | 6           | -9      | 216       | 280   |
| <b>CP</b>                   |          |               |             |         |           |       |
| Origin                      | 4        |               | 103         | -6      | 140       | 241   |
| Enroute                     | 0        |               | 0           | 2       | 9         | 11    |
| Destination                 | 1        |               | -20         | 2       | -28       | -45   |
|                             | 5        |               | 83          | -2      | 121       | 207   |
| <b>US Rail / Short Line</b> |          |               |             |         |           |       |
| Origin                      |          |               |             |         |           |       |
| Enroute                     |          |               |             | -11     |           | -11   |
| Destination                 | -4       |               |             | 24      | 1         | 21    |
|                             | -4       |               |             | 13      | 1         | 10    |



**Port Unloads - 11/7/2018**

|    | Prince Rupert | Vancouver | West Coast Total | Thunder Bay | Total |
|----|---------------|-----------|------------------|-------------|-------|
| CN | 213           | 356       | 569              | 176         | 745   |
| CP |               | 452       | 452              | 174         | 626   |
|    | 213           | 808       | 1,021            | 350         | 1,371 |





**Port Terminal Status**

**Vancouver**

Daily Activity for 11/7/2018

|     | Cars Arrived | Cars Received in Interchange | Cars Delivered in Interchange | Cars Placed for Unloading | Loads on Wheels at Destination As of 11/7/2018 |
|-----|--------------|------------------------------|-------------------------------|---------------------------|--|
| CN  | 240          | 135                          | 7                             | 505                       | 661  |
| CP  | 548          | 1                            | 135                           | 452                       | 898  |
| SRY |              | 6                            |                               | 2                         | 35   |

**Port Unloads**

|     | 11/07 | 11/06 | Week To Date | Last Week |
|-----|-------|-------|--------------|-----------|
| CN  | 356   | 426   | 1,318        | 2,382     |
| CP  | 452   | 487   | 1,297        | 2,975     |
| SRY | 3     | 3     | 17           | 36        |

**Age Profile of Loaded Cars Waiting Placement for Unloading**

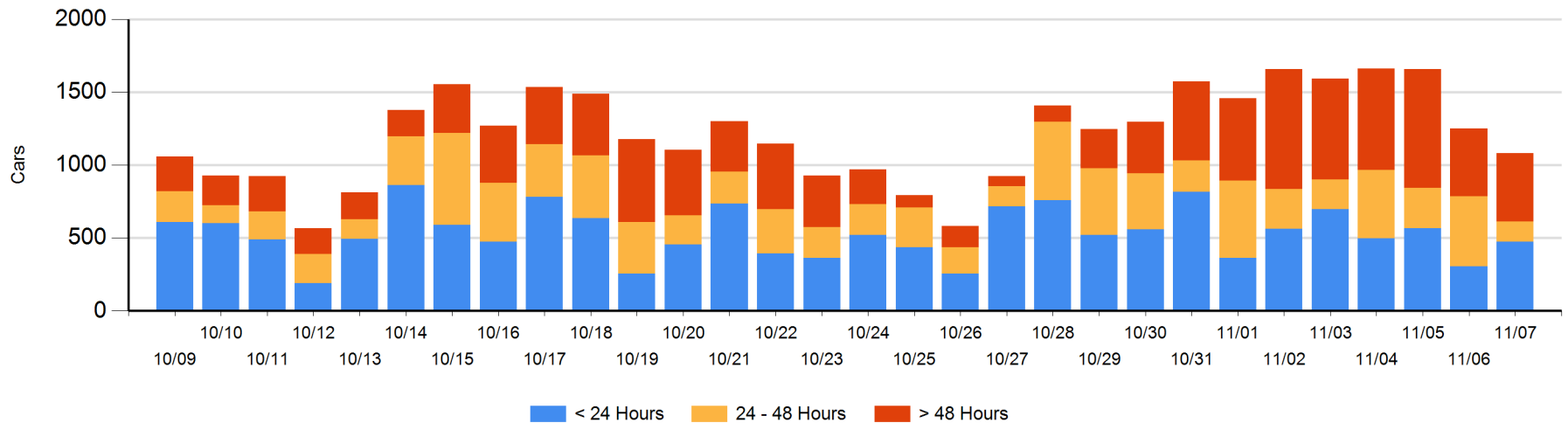
**Today**

|     | < 24 Hrs | 24 - 48 Hrs | > 48-72 Hrs | > 72 Hrs | Total On Hand |
|-----|----------|-------------|-------------|----------|---------------|
| CN  | 138      | 112         | 26          | 55       | 331           |
| CP  | 335      | 28          | 203         | 184      | 750           |
| SRY |          |             |             |          | 0             |

**Change in Last 24 Hours**

|     | < 24 Hrs | 24-48 Hrs | 48 - 72 Hrs | > 72 Hrs |
|-----|----------|-----------|-------------|----------|
| CN  | 5        | -11       | -6          | -132     |
| CP  | 161      | -327      | 178         | -39      |
| SRY |          |           |             |          |

**Loaded Cars on Hand Vancouver Waiting for Placement - Last 30 Days All Railways**



**Port Terminal Status**

**Prince Rupert**

Daily Activity for 11/7/2018

|    | Cars Arrived | Cars Received in Interchange | Cars Delivered in Interchange | Cars Placed for Unloading | Loads on Wheels at Destination As of 11/7/2018 |
|----|--------------|------------------------------|-------------------------------|---------------------------|--|
| CN | 292          |                              |                               | 293                       | 320  |

**Port Unloads**

|    | 11/07 | 11/06 | Week To Date | Last Week |
|----|-------|-------|--------------|-----------|
| CN | 213   | 193   | 543          | 1,502     |

**Age Profile of Loaded Cars Waiting Placement for Unloading**

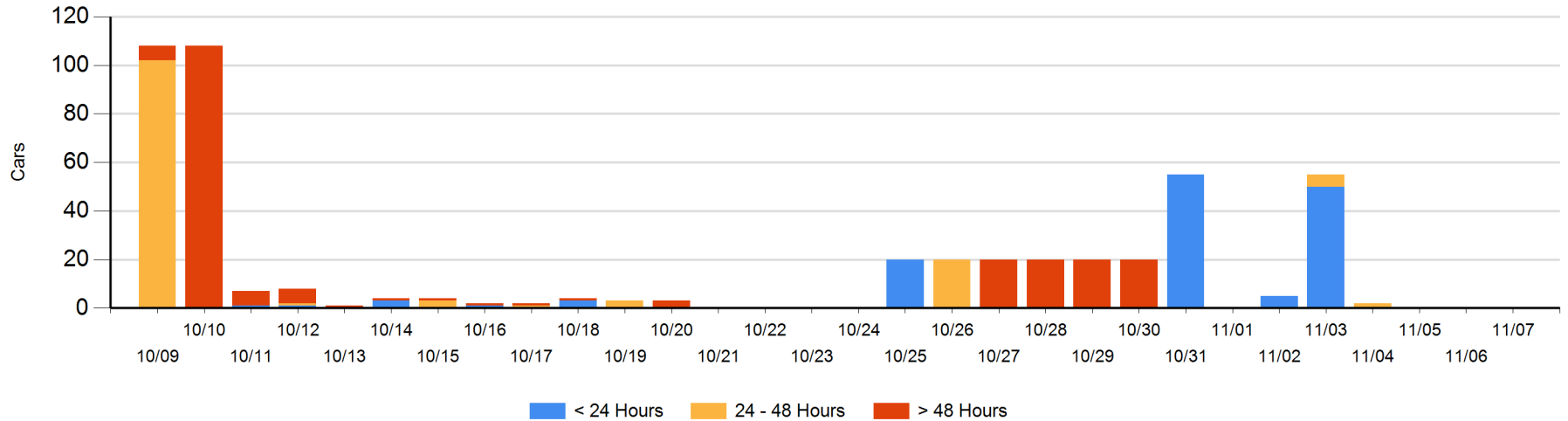
**Today**

|    | < 24 Hrs | 24 - 48 Hrs | > 48-72 Hrs | > 72 Hrs | Total On Hand |
|----|----------|-------------|-------------|----------|---------------|
| CN |          |             |             |          | 0             |

**Change in Last 24 Hours**

|    | < 24 Hrs | 24-48 Hrs | 48 - 72 Hrs | > 72 Hrs |
|----|----------|-----------|-------------|----------|
| CN |          |           |             |          |

Loaded Cars on Hand Prince Rupert Waiting for Placement - Last 30 Days All Railways



**Port Terminal Status**

**Thunder Bay**

Daily Activity for 11/7/2018

|    | Cars Arrived | Cars Received in Interchange | Cars Delivered in Interchange | Cars Placed for Unloading | Loads on Wheels at Destination As of 11/7/2018 |
|----|--------------|------------------------------|-------------------------------|---------------------------|--|
| CN | 85           |                              |                               | 51                        | 95   |
| CP | 112          |                              |                               | 279                       | 303  |

**Port Unloads**

|    | 11/07 | 11/06 | Week To Date | Last Week |
|----|-------|-------|--------------|-----------|
| CN | 176   | 168   | 344          | 562       |
| CP | 174   | 156   | 619          | 1,375     |

**Age Profile of Loaded Cars Waiting Placement for Unloading**

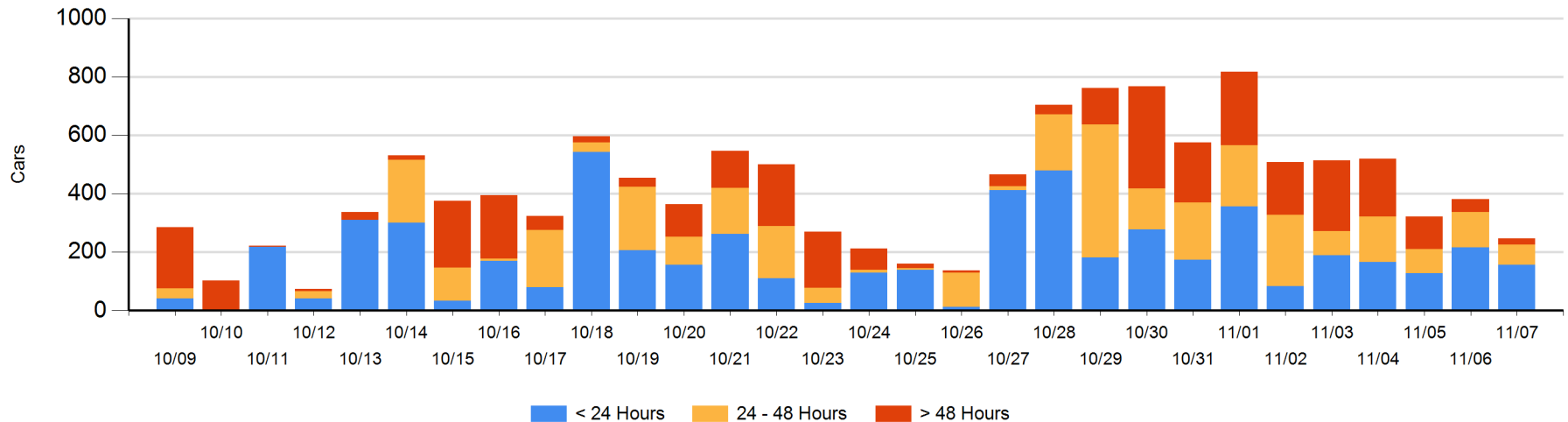
**Today**

|    | < 24 Hrs | 24 - 48 Hrs | > 48-72 Hrs | > 72 Hrs | Total On Hand |
|----|----------|-------------|-------------|----------|---------------|
| CN | 45       | 2           |             | 22       | 69            |
| CP | 112      | 66          |             |          | 178           |

**Change in Last 24 Hours**

|    | < 24 Hrs | 24-48 Hrs | 48 - 72 Hrs | > 72 Hrs |
|----|----------|-----------|-------------|----------|
| CN | 32       | 2         |             | 0        |
| CP | -91      | -56       |             | -21      |

Loaded Cars on Hand Thunder Bay Waiting for Placement - Last 30 Days All Railways



## Measurement Definitions

|                                 |   |
|---------------------------------|---|
| Loads on Wheels                 | <p>Count of loaded rail cars including all rail cars that have been released loaded at origin and have not been reported by the railway as unloaded at destination.</p> <p>Counts include all rail cars (hopper cars and boxcars) moving within a pipeline.</p>   |
| Loads Not Moving                | <p>Loaded rail cars for which the railways have not reported a movement event for 48 hours or more whether the rail car is at origin, enroute or at destination.</p>  |
| Port Unloads                    | <p>Count of rail cars reported by railways as unloaded at the western port destinations of Vancouver, Prince Rupert and Thunder Bay.</p> <p>Unload counts include all rail cars (hopper cars and boxcars) unloaded by all receivers including major port terminals, transloaders and other receivers.</p>   |
| Cars Arrived                    | <p>Count of rail cars reported as arrived at the destination railway terminal.</p>  |
| Cars Received in Interchange    | <p>Count of rail cars received in interchange by each railway within a destination railway terminal. Interchange activity is tracked for the Vancouver and Thunder Bay pipelines as applicable.</p>   |
| Cars Delivered in Interchange   | <p>Count of rail cars delivered in interchange by each railway within a destination railway terminal. Interchange activity is tracked for the Vancouver and Thunder Bay pipelines as applicable.</p>  |
| Cars Placed for Unloading       | <p>Count of rail cars reported by the railways as placed loaded at the receiver's facility for unloading.</p>   |
| Loads on Wheels at Destination  | <p>Count of rail cars that remain under load within the destination railway terminal including rail cars that have been reported as placed for unloading but not yet reported as unloaded.</p>  |
| Waiting Placement for Unloading | <p>Count of rail cars that have been reported as arrived at the destination railway terminal but not reported as placed for unloading by the railway.</p> <p>For the Ports of Vancouver, Prince Rupert and Thunder Bay the count of rail cars waiting placement for unloading is categorized by age – i.e. the elapsed time from arrival at destination to the current report date.</p> |