

SPEED READ

- Loads on wheels increased slightly overnight, marking a rise in both CN and CP volumes. On a net basis, volumes increased due to higher volumes in the Vancouver and Prince Rupert corridors offset by lower traffic in the Thunder Bay, USA/MEX and E. Canada corridors.
- Network fluidity improved overnight, led by a decline in idle car counts on both CN and CP by 9% (-62) and 8% (-85), respectively. The total count of cars for 4+ days on both railways fell 6% (-43) overnight - currently at 732 cars.
- Three days in Week 16 unloads now behind prior week's performance by 500 unloads, reflecting reduced unloads at Vancouver and Thunder Bay offset by improved week over week performance at Prince Rupert.

Loads on Wheels

- Loads on wheels gained marginally by 2% (+189) overnight, due to higher traffic on both CN and CP - combined total at 11,220 and 1% below the trailing 30-day average.
- On a net basis, the rise in loads on wheels reflects higher volumes in the Vancouver and Prince Rupert corridors offset by lower traffic in the Thunder Bay, USA/MEX and E. Canada corridors.
- CN volumes increased slightly by 1% (+49) overnight, with higher traffic in the Prince Rupert and Vancouver corridors offset by lower volumes in the Thunder Bay, E. Canada and USA/MEX corridors. System wide CN loads on wheels presently at 5,948 and 7% above the trailing 30-day average.
- CP volumes increased 5% (+251) overnight, driven by a rise in volumes in the Vancouver and USA/MEX corridors offset by a decline in volumes in the Thunder Bay and E. Canada corridors. CP system wide loads on wheels presently at 5,011 and 9% below the trailing 30-day average.
- Vancouver currently at 7,048, increased 6% (+373) overnight, now 3% above the trailing 30-day average.
- The Prince Rupert pipeline presently at 1,439, increased 7% (+90) overnight, and in line with the trailing 30-day average.
- Thunder Bay volumes fell 9% (-145) overnight - now at 1,459 and 7% below the trailing 30-day average, with 65% of traffic moving on CP.

Hopper Car Rationing

- CN rationed 104 hopper cars in week 14.

Loads Not Moving

- **The count of cars not moving for 48+ hours fell 8% (-147) overnight, reflecting reduced counts on both CN and CP. Idle car counts now at 1,594 and 28% below the trailing 30 day-average.**
- CN
 - **The count of idle cars for 48+ hours fell 9% (-62) overnight - presently at 638 cars.**
 - The number of cars idle for 4+ days decreased 38% (-102) overnight - currently at 170 cars.
 - The count of cars not moving for 7+ days gained 14% (+13) overnight - presently at 107 cars.
 - Vancouver represents 58% of all idle cars.
 - In total 32% of all idle cars are dwelling at origin locations.
- CP
 - **CP idle car counts for 48+ hours declined 8% (-85) overnight - now at 956 cars.**
 - The number of cars idle for 4+ days increased 12% (+59) overnight - currently at 562 cars.
 - The number of cars idle for 7+ days fell 13% (-30) overnight - presently at 197 cars.

- Vancouver accounts for 67% of all idle cars.
- In total 70% of all idle cars are dwelling at origin locations.

Port Performance

- CN and CP reported a total of 1,120 cars unloaded at the three major ports, now 12% below the trailing 30 day-average. Three days in Week 16 unloads now behind last week's pace by 500 unloads, reflecting reduced unloads at Vancouver and Thunder Bay offset by higher unloads at Prince Rupert.
- Vancouver
 - 799 unloads reported by CN and CP at the Port of Vancouver; CN - 481 and CP - 318. Three days in Week 16 unloads are tracking behind last week's performance by 300 unloads.
 - There are about 1,500 cars on site at Vancouver with fewer than 1,000 cars arriving at the port in the last 24 hours.
 - CN and CP have 1,550 cars in British Columbia en route to Vancouver, with 850 cars at Kamloops and west, and 52% of traffic moving on CP.
- Prince Rupert
 - Prince Rupert reported 124 unloads, now ahead of last week's unloads after three days by 100 unloads.
 - Loads on wheels now above 1,000 cars - presently at 1,439 cars.
 - There are about 750 cars west of Jasper en route to Prince Rupert.
 - There are 100 cars on site at Prince Rupert with more than 200 cars arriving at the port in the last 24 hours. Given the structure of the pipeline, there appears to be sufficient cars available to support unloads in the next few days.
- Thunder Bay
 - 197 unloads were reported at Thunder Bay yesterday. Three days in Week 16 unloads are tracking behind last week's pace by 300 unloads.
 - There are nearly 250 cars on site at Thunder Bay with more than 200 cars arriving at the port in the prior 24 hours.
 - There are 2 cars en route to Thunder Bay from Winnipeg and east. Cars on hand and those en route might be challenged in the next day or two.

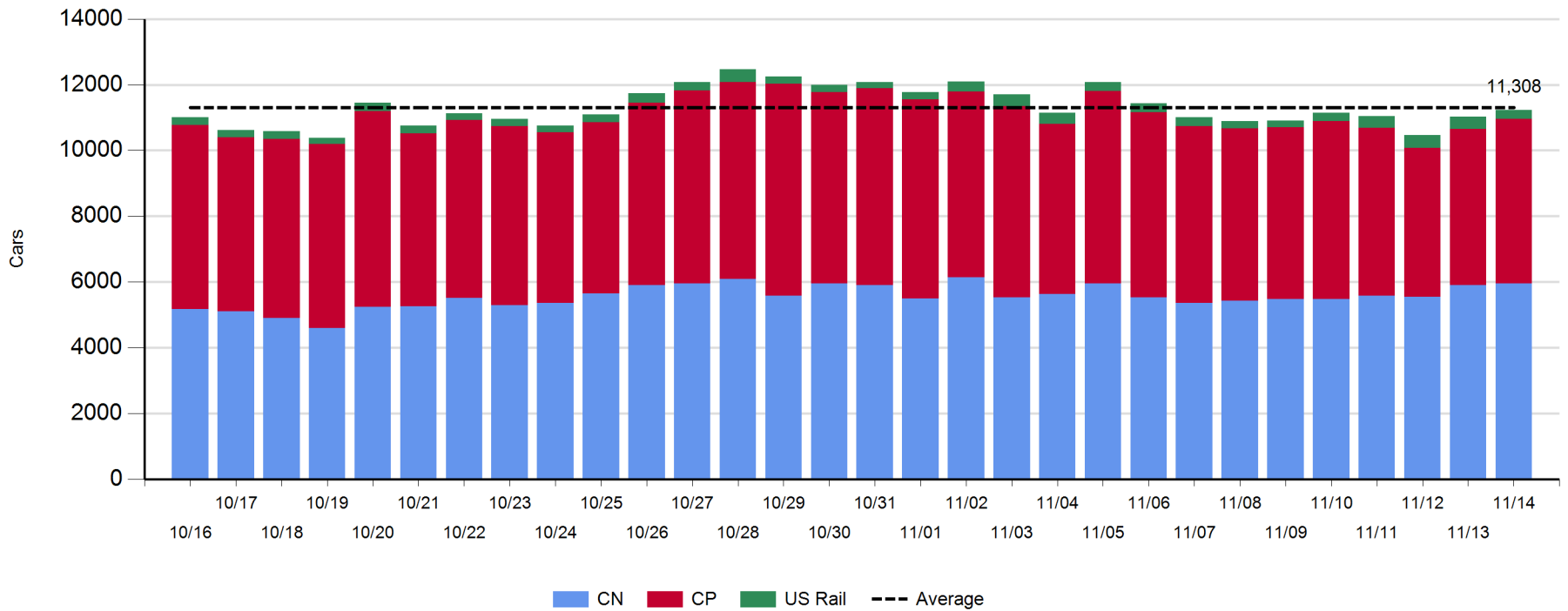
Daily Loads on Wheels - 11/14/2018

	E Canada	Prince Rupert	Thunder Bay	USA/MEX	Vancouver	Total
CN	365	1,439	507	191	3,446	5,948
CP	77		952	417	3,565	5,011
Short Line	20				37	57
US Rail				204		204
	462	1,439	1,459	812	7,048	11,220

Change in Loads on Wheels - Prior 24 Hours

	E Canada	Prince Rupert	Thunder Bay	USA/MEX	Vancouver	Total
CN	-20	90	-51	-10	40	49
CP	-21		-94	17	349	251
Short Line	-10				-16	-26
US Rail				-85		-85
	-51	90	-145	-78	373	189

Loads on Wheels - Prior 30 Days

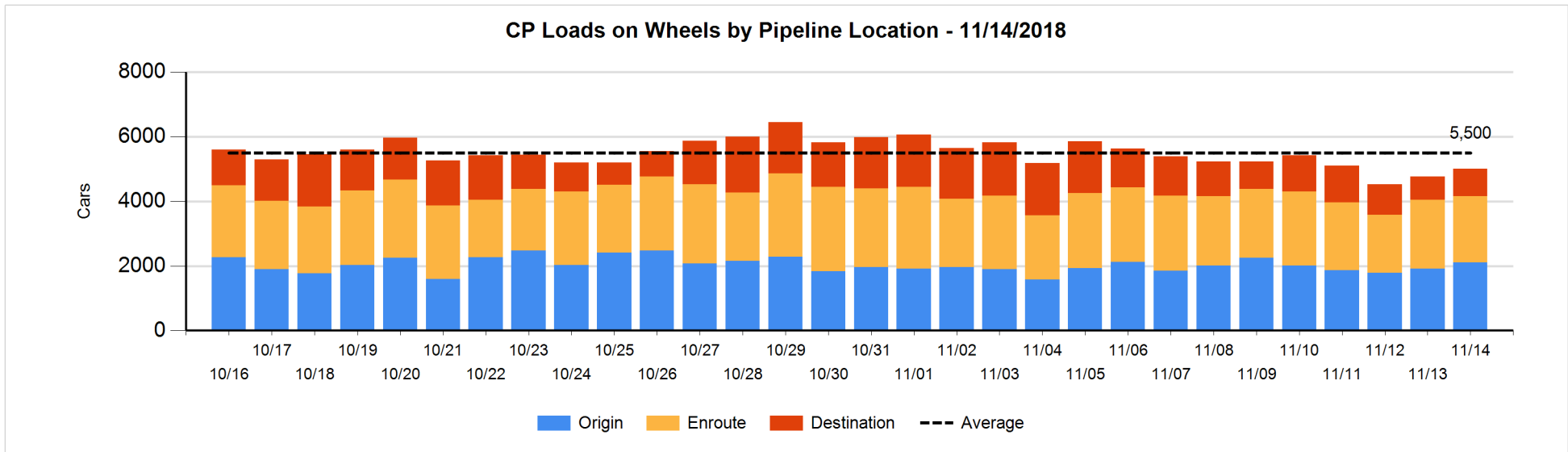
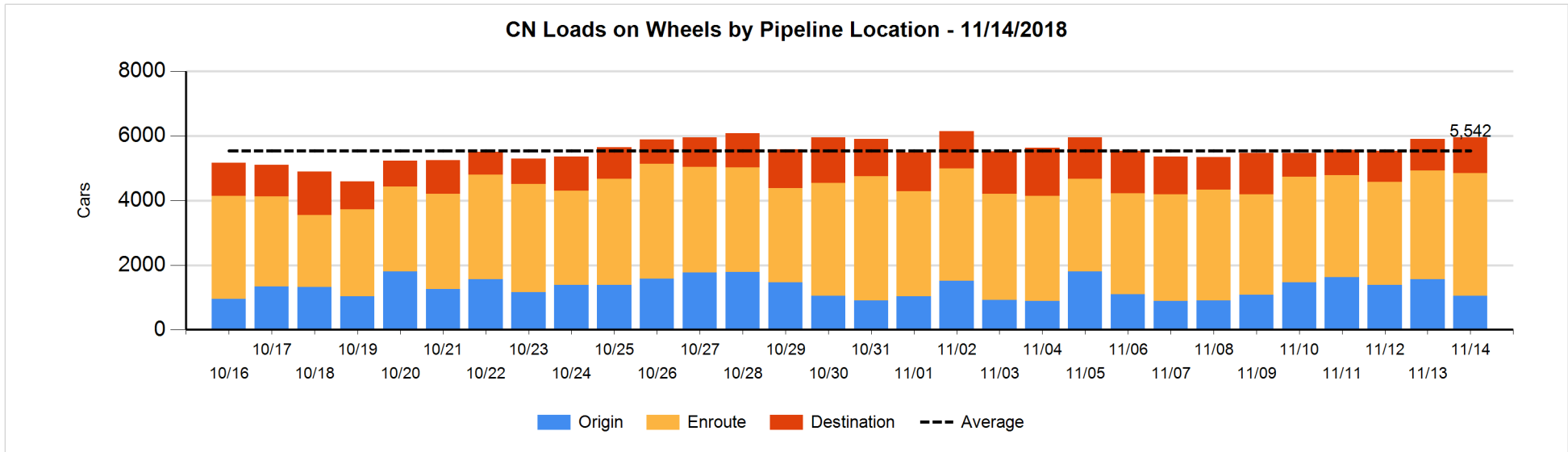


Daily Loads on Wheels By Pipeline Location - 11/14/2018

	E Canada	Prince Rupert	Thunder Bay	USA/MEX	Vancouver	Total
CN						
Origin	7	277	147	5	620	1,056
Enroute	234	1,056	346	163	1,991	3,790
Destination	124	106	14	23	835	1,102
	365	1,439	507	191	3,446	5,948
CP						
Origin	33		278	195	1,593	2,099
Enroute	42		451	215	1,357	2,065
Destination	2		223	7	615	847
	77		952	417	3,565	5,011
US Rail / Short Line						
Origin						
Enroute	4			71		75
Destination	16			133	37	186
	20			204	37	261

Change in Daily Loads on Wheels By Pipeline Location - Prior 24 Hours

	E Canada	Prince Rupert	Thunder Bay	USA/MEX	Vancouver	Total
CN						
Origin	-35	-53	-197	4	-217	-498
Enroute	21	41	247	-4	116	421
Destination	-6	102	-101	-10	141	126
	-20	90	-51	-10	40	49
CP						
Origin	2		-127	-25	339	189
Enroute	-1		-91	46	-30	-76
Destination	-22		124	-4	40	138
	-21		-94	17	349	251
US Rail / Short Line						
Origin						
Enroute	-16			-4		-20
Destination	6			-81	-16	-91
	-10			-85	-16	-111

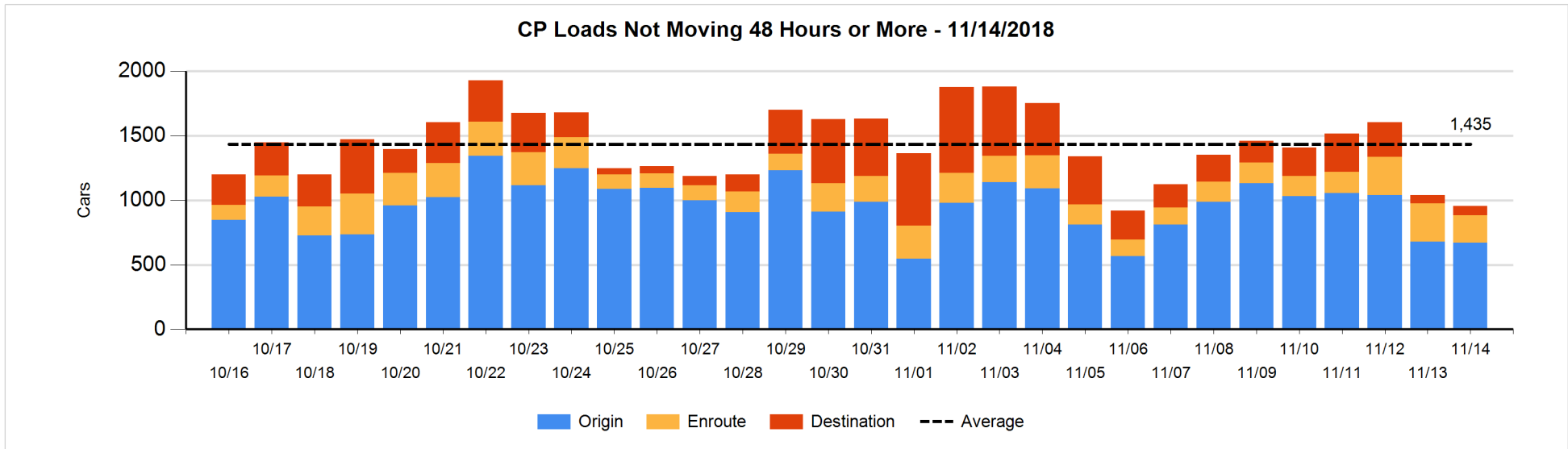
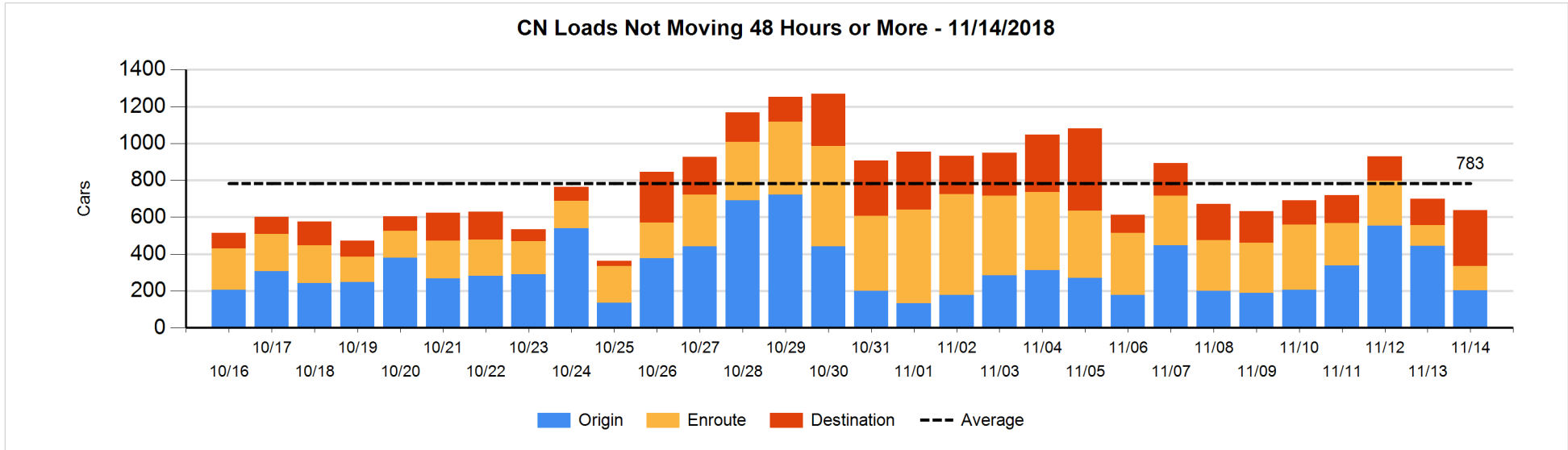


Loads Not Moving 48 Hours or More - 11/14/2018

	E Canada	Prince Rupert	Thunder Bay	USA/MEX	Vancouver	Total
CN						
Origin		98			106	204
Enroute	10	5	48	45	23	131
Destination	44		2	18	239	303
	54	103	50	63	368	638
CP						
Origin			113	25	533	671
Enroute	26		56	92	37	211
Destination	1			5	68	74
	27		169	122	638	956
US Rail / Short Line						
Origin						
Enroute	4			23		27
Destination				29	14	43
	4			52	14	70

Change in Loads Not Moving 48 Hours or More - 11/14/2018

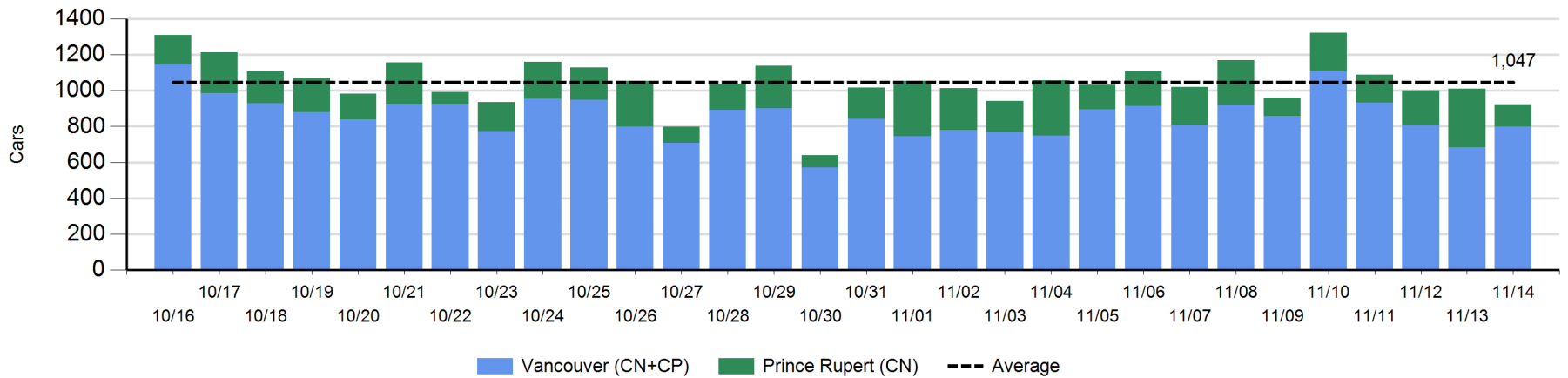
	E Canada	Prince Rupert	Thunder Bay	USA/MEX	Vancouver	Total
CN						
Origin	-39	98	-49		-250	-240
Enroute	-10	0	48	1	-21	18
Destination	8		-4	4	152	160
	-41	98	-5	5	-119	-62
CP						
Origin			-127	-31	149	-9
Enroute	0		-29	-51	-5	-85
Destination	0		-1	-4	14	9
	0		-157	-86	158	-85
US Rail / Short Line						
Origin						
Enroute	-9			-2		-11
Destination				-1	-22	-23
	-9			-3	-22	-34



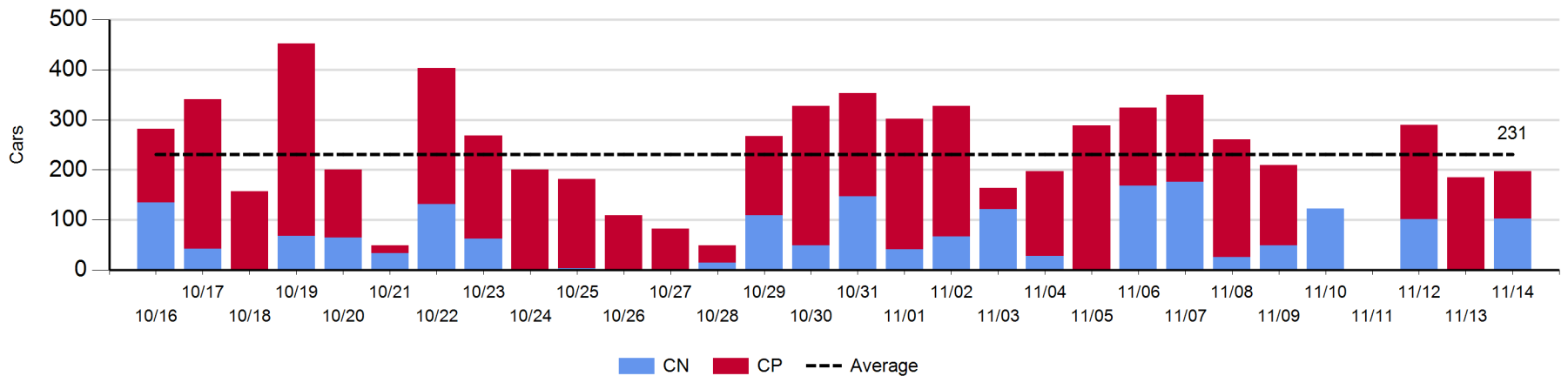
Port Unloads - 11/14/2018

	Prince Rupert	Vancouver	West Coast Total	Thunder Bay	Total
CN	124	481	605	103	708
CP		318	318	94	412
	124	799	923	197	1,120

West Coast Port Unloads - Prior 30 Days



Thunder Bay Port Unloads - Prior 30 Days



Port Terminal Status

Vancouver

Daily Activity for 11/14/2018

	Cars Arrived	Cars Received in Interchange	Cars Delivered in Interchange	Cars Placed for Unloading	Loads on Wheels at Destination As of 11/14/2018
CN	577	180	98	379	835
CP	408	92	180	423	615
SRY		6		18	37

Port Unloads

	11/14	11/13	Week To Date	Last Week
CN	481	241	1,107	3,283
CP	318	441	1,179	3,148
SRY	21	14	41	51

Age Profile of Loaded Cars Waiting Placement for Unloading

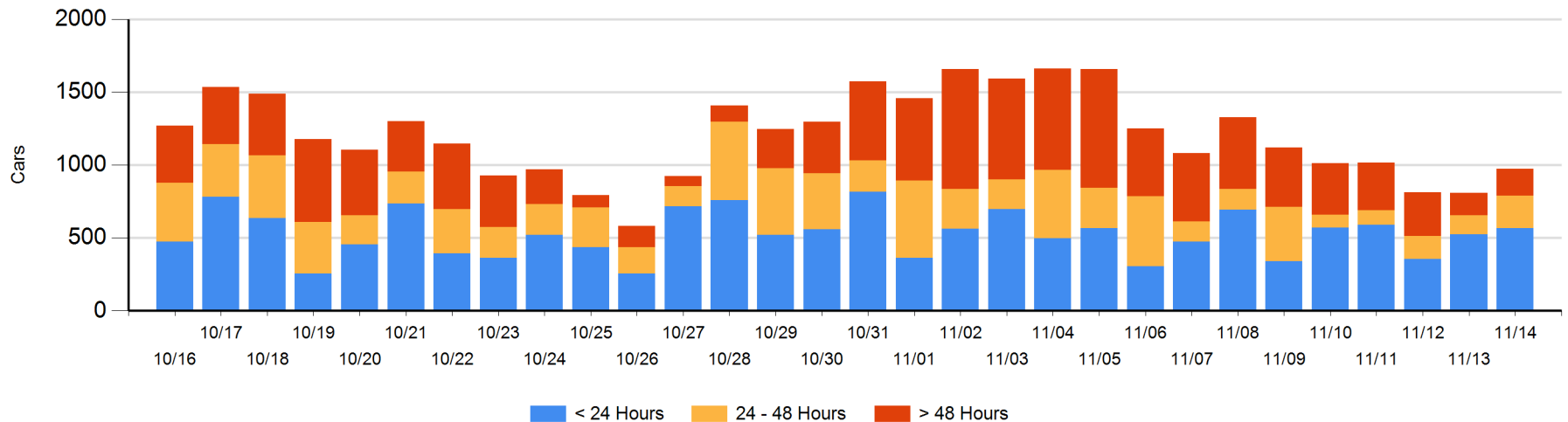
Today

	< 24 Hrs	24 - 48 Hrs	> 48-72 Hrs	> 72 Hrs	Total On Hand
CN	398	67	33	64	562
CP	168	155	52	37	412
SRY					0

Change in Last 24 Hours

	< 24 Hrs	24-48 Hrs	48 - 72 Hrs	> 72 Hrs
CN	141	34	-19	28
CP	-100	58	31	-7
SRY				

Loaded Cars on Hand Vancouver Waiting for Placement - Last 30 Days All Railways



Port Terminal Status

Prince Rupert

Daily Activity for 11/14/2018

	Cars Arrived	Cars Received in Interchange	Cars Delivered in Interchange	Cars Placed for Unloading	Loads on Wheels at Destination As of 11/14/2018
CN	226			125	106

Port Unloads

	11/14	11/13	Week To Date	Last Week
CN	124	327	647	1,266

Age Profile of Loaded Cars Waiting Placement for Unloading

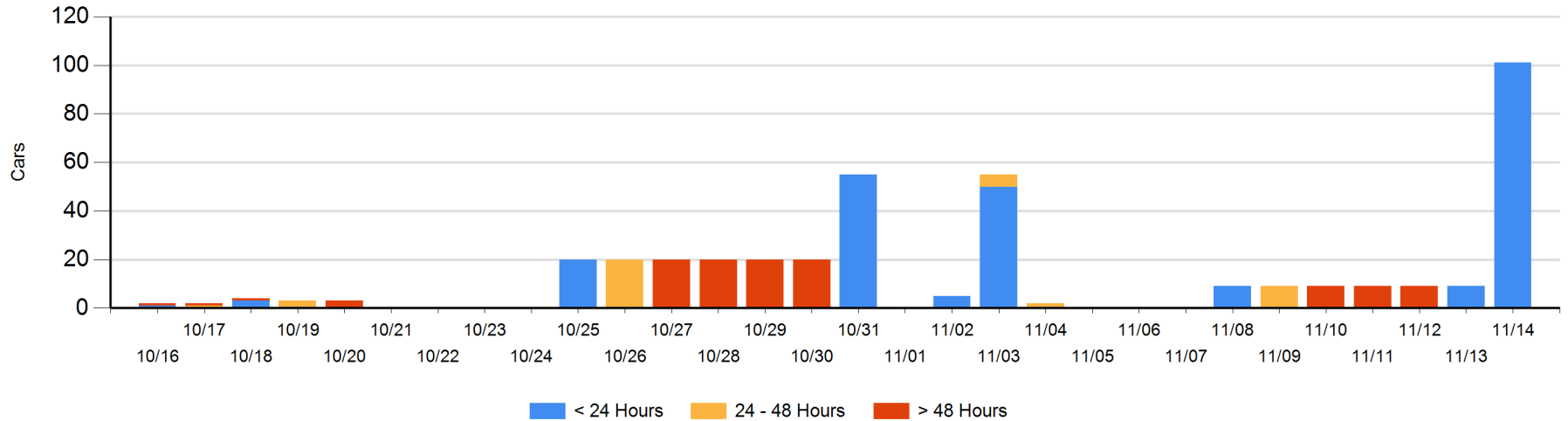
Today

	< 24 Hrs	24 - 48 Hrs	> 48-72 Hrs	> 72 Hrs	Total On Hand
CN	101				101

Change in Last 24 Hours

	< 24 Hrs	24-48 Hrs	48 - 72 Hrs	> 72 Hrs
CN	101			-9

Loaded Cars on Hand Prince Rupert Waiting for Placement - Last 30 Days All Railways



Port Terminal Status

Thunder Bay

Daily Activity for 11/14/2018

	Cars Arrived	Cars Received in Interchange	Cars Delivered in Interchange	Cars Placed for Unloading	Loads on Wheels at Destination As of 11/14/2018
CN	2			2	14
CP	218			108	223

Port Unloads

	11/14	11/13	Week To Date	Last Week
CN	103	1	206	542
CP	94	184	466	1,015

Age Profile of Loaded Cars Waiting Placement for Unloading

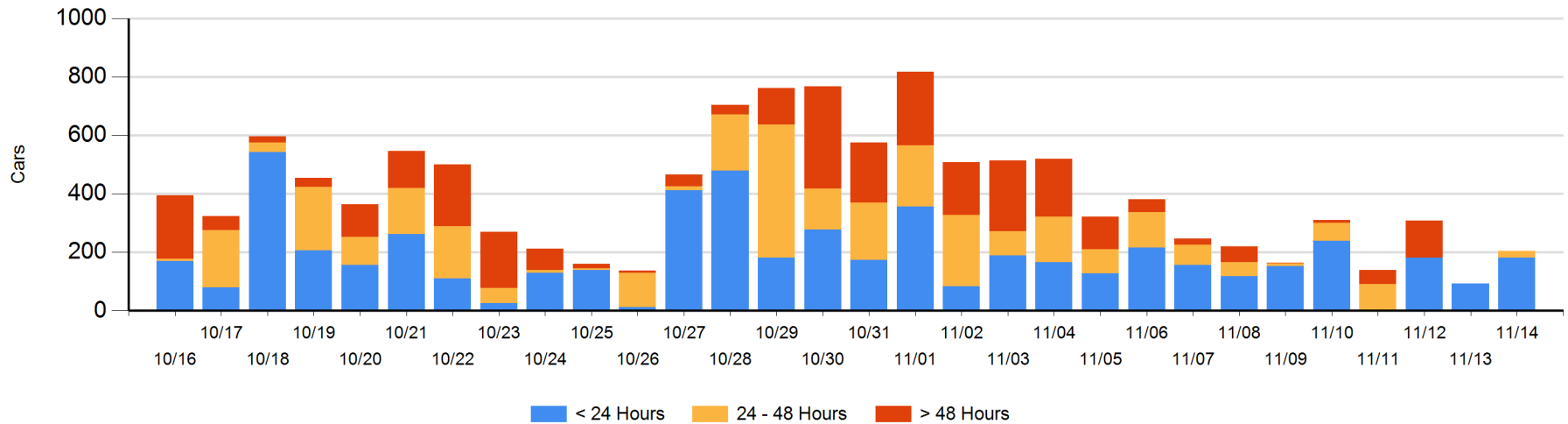
Today

	< 24 Hrs	24 - 48 Hrs	> 48-72 Hrs	> 72 Hrs	Total On Hand
CN		2			2
CP	182	20			202

Change in Last 24 Hours

	< 24 Hrs	24-48 Hrs	48 - 72 Hrs	> 72 Hrs
CN	-2	2		
CP	90	20		

Loaded Cars on Hand Thunder Bay Waiting for Placement - Last 30 Days All Railways



Measurement Definitions

Loads on Wheels	<p>Count of loaded rail cars including all rail cars that have been released loaded at origin and have not been reported by the railway as unloaded at destination.</p> <p>Counts include all rail cars (hopper cars and boxcars) moving within a pipeline.</p>
Loads Not Moving	<p>Loaded rail cars for which the railways have not reported a movement event for 48 hours or more whether the rail car is at origin, enroute or at destination.</p>
Port Unloads	<p>Count of rail cars reported by railways as unloaded at the western port destinations of Vancouver, Prince Rupert and Thunder Bay.</p> <p>Unload counts include all rail cars (hopper cars and boxcars) unloaded by all receivers including major port terminals, transloaders and other receivers.</p>
Cars Arrived	<p>Count of rail cars reported as arrived at the destination railway terminal.</p>
Cars Received in Interchange	<p>Count of rail cars received in interchange by each railway within a destination railway terminal. Interchange activity is tracked for the Vancouver and Thunder Bay pipelines as applicable.</p>
Cars Delivered in Interchange	<p>Count of rail cars delivered in interchange by each railway within a destination railway terminal. Interchange activity is tracked for the Vancouver and Thunder Bay pipelines as applicable.</p>
Cars Placed for Unloading	<p>Count of rail cars reported by the railways as placed loaded at the receiver's facility for unloading.</p>
Loads on Wheels at Destination	<p>Count of rail cars that remain under load within the destination railway terminal including rail cars that have been reported as placed for unloading but not yet reported as unloaded.</p>
Waiting Placement for Unloading	<p>Count of rail cars that have been reported as arrived at the destination railway terminal but not reported as placed for unloading by the railway.</p> <p>For the Ports of Vancouver, Prince Rupert and Thunder Bay the count of rail cars waiting placement for unloading is categorized by age – i.e. the elapsed time from arrival at destination to the current report date.</p>