

## SPEED READ

- Loads on wheels fell marginally overnight, reflecting a decline in CN volumes offset by higher CP volumes. On a net basis, volumes decreased due to lower traffic in the Vancouver, USA/MEX and E. Canada corridors offset by increased volumes in the Thunder Bay and Prince Rupert corridors.
- Network fluidity deteriorated overnight, led by a decline in idle car counts on CN by 18% (-115) offset by a rise in idle car counts on CP by 14% (+158). The total count of cars for 4+ days on both railways fell 18% (-154) overnight - currently at 702 cars.
- Four days in Week 16 unloads now behind prior week's performance by more than 750 unloads, reflecting reduced unloads at Thunder Bay and Vancouver offset by an improvement in week over week performance at Prince Rupert.

---

## Loads on Wheels

- Loads on wheels decreased slightly (-16) overnight, due to lower traffic on CN offset by higher traffic on CP - combined total at 11,348 and in line with the trailing 30-day average.
- On a net basis, the decline in loads on wheels reflects reduced traffic in the Vancouver, USA/MEX and E. Canada corridors offset by higher volumes in the Thunder Bay and Prince Rupert corridors.
- CN volumes decreased slightly by 1% (-54) overnight, with reduced volumes in the Vancouver, E. Canada and USA/MEX corridors offset by higher volumes in the Thunder Bay and Prince Rupert corridors. System wide CN loads on wheels presently at 5,894 and 6% above the trailing 30-day average.
- CP volumes increased for the third consecutive day, up 2% (+126) overnight, driven by a rise in volumes in the Thunder Bay and Vancouver corridors offset by a decline in traffic in the USA/MEX and E. Canada corridors. CP system wide loads on wheels now at 5,281 and 4% below the trailing 30-day average.
- Vancouver currently at 6,762, decreased 4% (-288) overnight, now 1% below the trailing 30-day average.
- The Prince Rupert pipeline presently at 1,535, gained 7% (+96) overnight, and 6% above the trailing 30-day average.
- Thunder Bay volumes rose significantly by 19% (+306) overnight - presently at 1,904 and 21% above the trailing 30-day average, with 64% of traffic moving on CP.

## Hopper Car Rationing

- CN rationed 104 hopper cars in week 14.

## Loads Not Moving

- **The count of cars not moving for 48+ hours rose 2% (+43) overnight, reflecting lower counts on CN offset by higher counts on CP. Idle car counts presently at 1,779 and 20% below the trailing 30 day-average.**
- CN
  - **The count of idle cars for 48+ hours decreased for the third consecutive day, down 18% (-115) overnight - presently at 523 cars.**
  - The number of cars idle for 4+ days rose 15% (+26) overnight - presently at 196 cars.
  - The count of cars not moving for 7+ days decreased 44% (-47) overnight - currently at 60 cars.
  - Vancouver represents 55% of all idle cars.
  - In total 21% of all idle cars are dwelling at origin locations.
- CP
  - **CP idle car counts for 48+ hours rose 14% (+158) overnight - presently at 1,256 cars.**
  - The number of cars idle for 4+ days decreased 26% (-180) overnight - presently at 506 cars.

- The number of cars idle for 7+ days gained marginally by 1% (+1) overnight - presently at 198 cars.
- Vancouver accounts for 66% of all idle cars.
- In total 66% of all idle cars are dwelling at origin locations.

### **Port Performance**

- CN and CP reported a total of 1,152 cars unloaded at the three major ports, now 9% below the trailing 30 day-average. Four days in Week 16 unloads now behind last week's pace by more than 750 unloads, reflecting reduced unloads at Thunder Bay and Vancouver offset by higher unloads at Prince Rupert.
- Vancouver
  - 837 unloads reported by CN and CP at the Port of Vancouver; CN - 527 and CP - 310. Four days in Week 16 unloads are tracking behind last week's performance by around 400 unloads.
  - There are around 1,200 cars on site at Vancouver with 550 cars arriving at the port in the last 24 hours.
  - CN and CP have around 1,600 cars in British Columbia en route to Vancouver, with 1,100 cars at Kamloops and west, and 59% of traffic moving on CP.
- Prince Rupert
  - Prince Rupert reported 225 unloads, now ahead of last week's unloads after four days by fewer than 100 unloads.
  - Loads on wheels now above 1,000 cars - now at 1,535 cars.
  - There are more than 650 cars west of Jasper en route to Prince Rupert.
  - There are more than 100 cars on site at Prince Rupert with fewer than 250 cars arriving at the port in the last 24 hours. Given the structure of the pipeline, there appears to be sufficient cars available to support unloads in the next few days.
- Thunder Bay
  - 90 unloads were reported at Thunder Bay yesterday. Four days in Week 16 unloads are tracking behind last week's pace by more than 450 unloads.
  - There are 150 cars on site at Thunder Bay with zero cars arriving at the port in the prior 24 hours.
  - There are fewer than 900 cars en route to Thunder Bay from Winnipeg and east. Cars on hand and those en route should support unloads for the balance of the week.

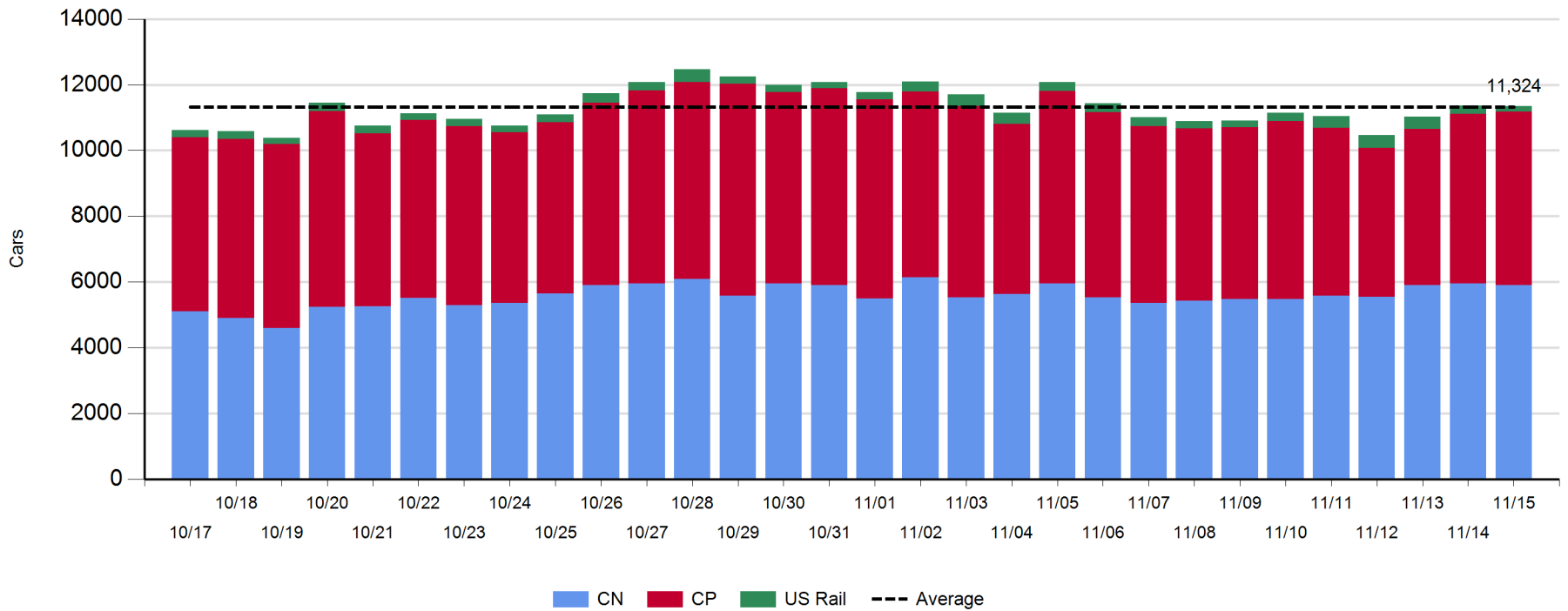
**Daily Loads on Wheels - 11/15/2018**

	E Canada	Prince Rupert	Thunder Bay	USA/MEX	Vancouver	Total
CN	343	1,535	681	190	3,145	5,894
CP	75		1,223	408	3,575	5,281
Short Line	4				42	46
US Rail				127		127
	422	1,535	1,904	725	6,762	11,348

**Change in Loads on Wheels - Prior 24 Hours**

	E Canada	Prince Rupert	Thunder Bay	USA/MEX	Vancouver	Total
CN	-22		96	174	-1	-301
CP	-2			132	-12	8
Short Line	-16					5
US Rail				-77		-77
	-40	96	306	-90	-288	-16

**Loads on Wheels - Prior 30 Days**

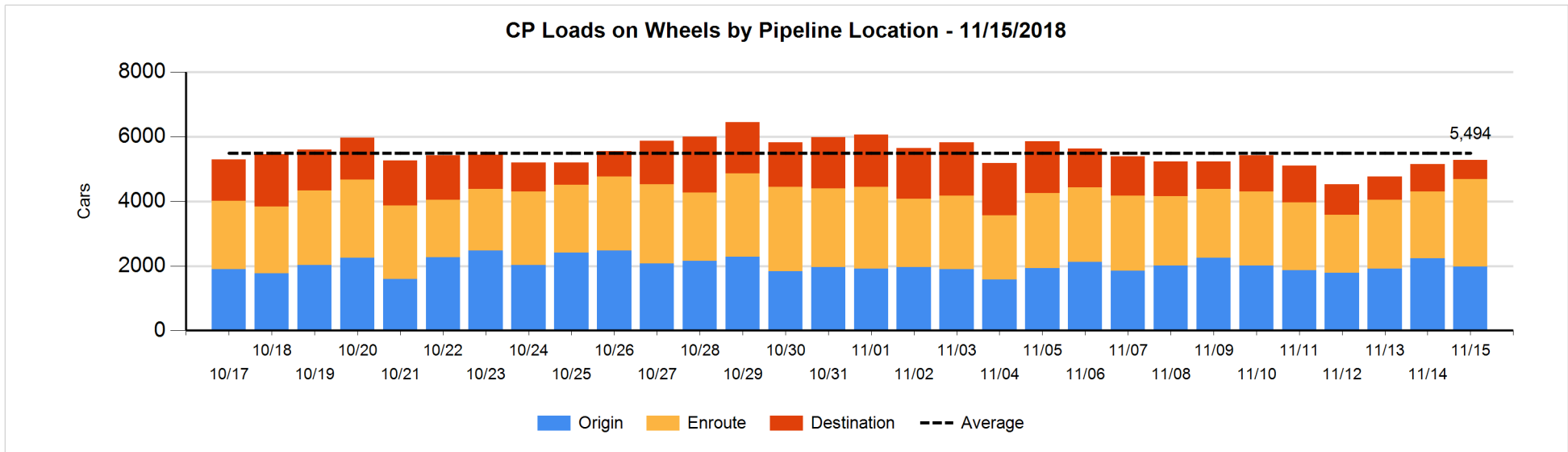
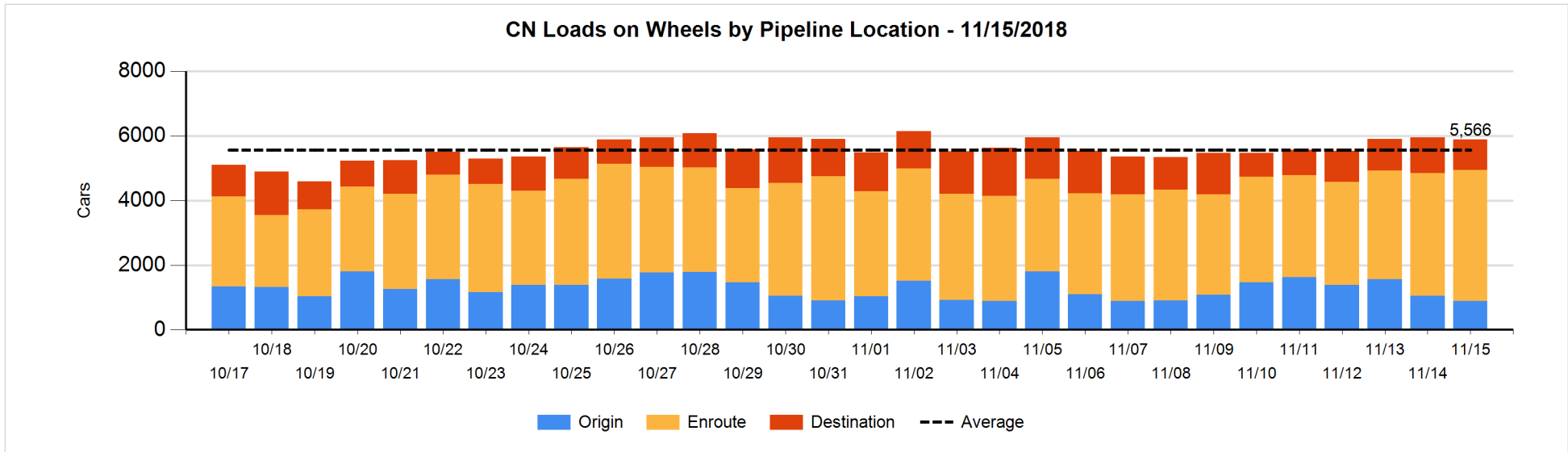


**Daily Loads on Wheels By Pipeline Location - 11/15/2018**

	E Canada	Prince Rupert	Thunder Bay	USA/MEX	Vancouver	Total
CN						
Origin	18	345	183	11	325	882
Enroute	229	1,062	493	157	2,123	4,064
Destination	96	128	5	22	697	948
	343	1,535	681	190	3,145	5,894
CP						
Origin	12		324	195	1,451	1,982
Enroute	62		757	210	1,675	2,704
Destination	1		142	3	449	595
	75		1,223	408	3,575	5,281
US Rail / Short Line						
Origin						
Enroute	4			87		91
Destination				40	42	82
	4			127	42	173

**Change in Daily Loads on Wheels By Pipeline Location - Prior 24 Hours**

	E Canada	Prince Rupert	Thunder Bay	USA/MEX	Vancouver	Total
CN						
Origin	11	68	36	6	-295	-174
Enroute	-5	6	147	-6	132	274
Destination	-28	22	-9	-1	-138	-154
	-22	96	174	-1	-301	-54
CP						
Origin	-21		-93	0	-144	-258
Enroute	20		306	-8	318	636
Destination	-1		-81	-4	-166	-252
	-2		132	-12	8	126
US Rail / Short Line						
Origin						
Enroute	0			16		16
Destination	-16			-93	5	-104
	-16			-77	5	-88

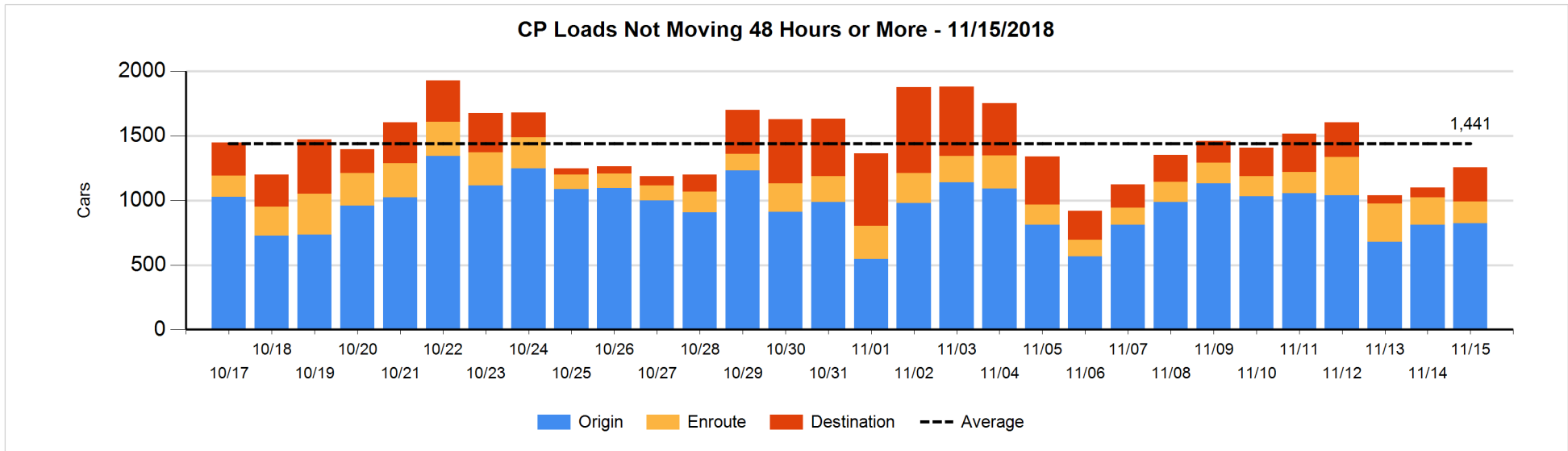
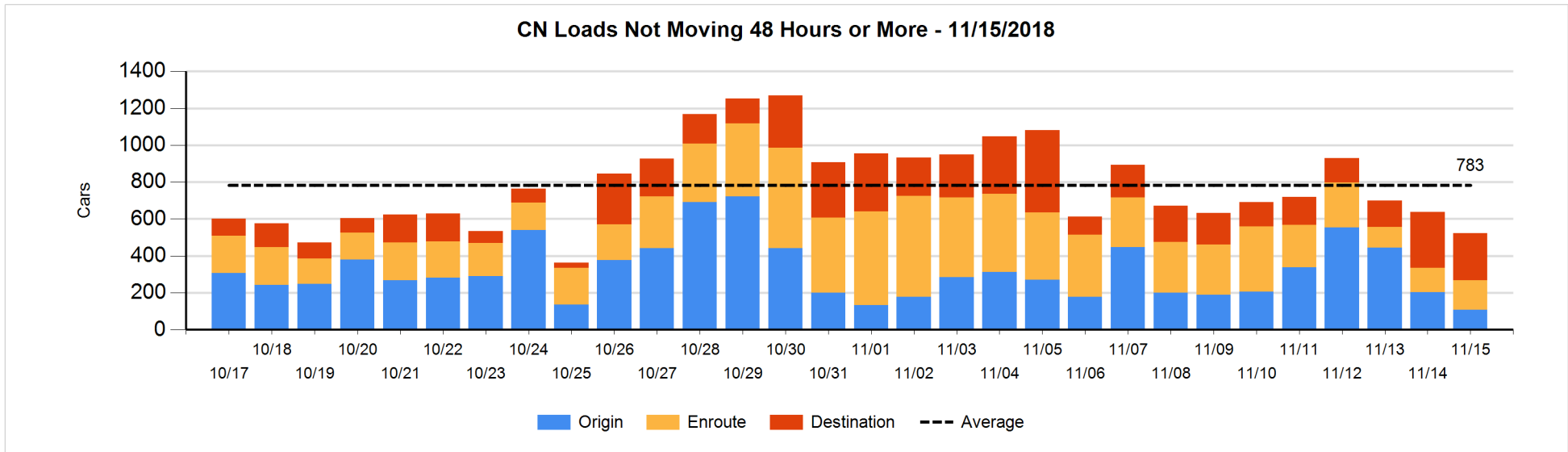


**Loads Not Moving 48 Hours or More - 11/15/2018**

	E Canada	Prince Rupert	Thunder Bay	USA/MEX	Vancouver	Total
<b>CN</b>						
Origin				1	107	108
Enroute	89	7		48	15	159
Destination	69		5	17	165	256
	158	7	5	66	287	523
<b>CP</b>						
Origin	9		111	164	539	823
Enroute	34		23	84	27	168
Destination	1			1	263	265
	44		134	249	829	1256
<b>US Rail / Short Line</b>						
Origin						
Enroute				30		30
Destination				36	16	52
				66	16	82

**Change in Loads Not Moving 48 Hours or More - 11/15/2018**

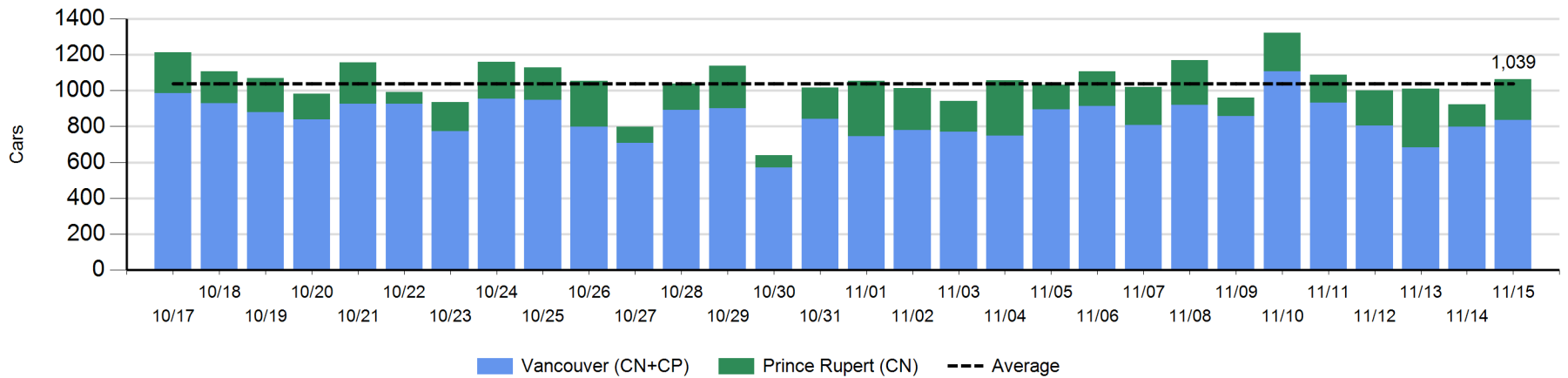
	E Canada	Prince Rupert	Thunder Bay	USA/MEX	Vancouver	Total
<b>CN</b>						
Origin		-98		1	1	-96
Enroute	79	2	-48	3	-8	28
Destination	25		3	-1	-74	-47
	104	-96	-45	3	-81	-115
<b>CP</b>						
Origin	9		-141	139	6	13
Enroute	8		-33	-11	-10	-46
Destination	0			-4	195	191
	17		-174	124	191	158
<b>US Rail / Short Line</b>						
Origin						
Enroute	-4			7		3
Destination				7	2	9
	-4			14	2	12



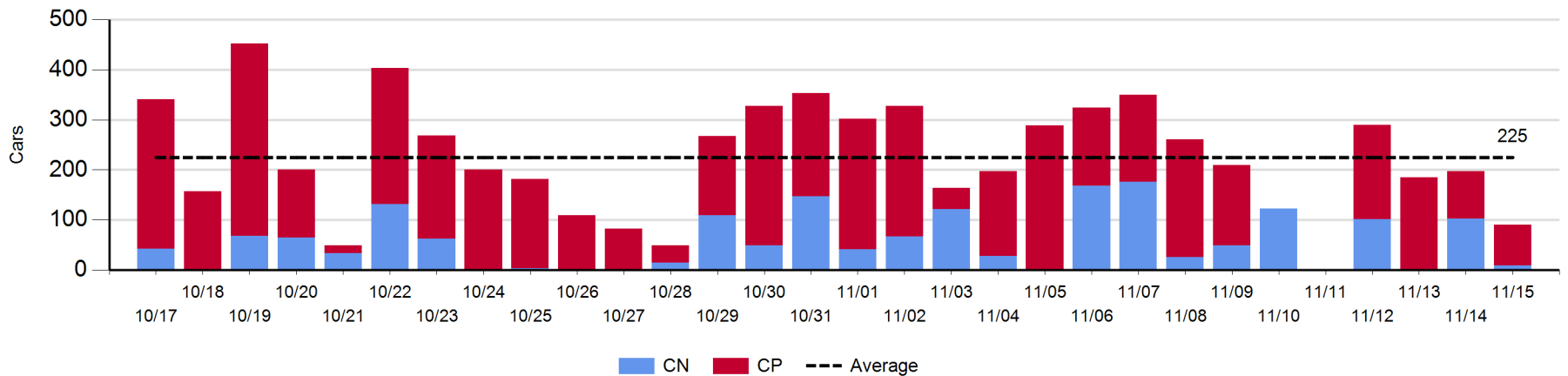
**Port Unloads - 11/15/2018**

	Prince Rupert	Vancouver	West Coast Total	Thunder Bay	Total
CN	225	527	752	9	761
CP		310	310	81	391
	225	837	1,062	90	1,152

**West Coast Port Unloads - Prior 30 Days**



**Thunder Bay Port Unloads - Prior 30 Days**





**Port Terminal Status**

**Vancouver**

Daily Activity for 11/15/2018

	Cars Arrived	Cars Received in Interchange	Cars Delivered in Interchange	Cars Placed for Unloading	Loads on Wheels at Destination As of 11/15/2018
CN	203	201	108	454	697
CP	346	102	201	250	449
SRY		6		8	42

**Port Unloads**

	11/15	11/14	Week To Date	Last Week
CN	527	481	1,634	3,283
CP	310	318	1,489	3,148
SRY	8	21	49	51

**Age Profile of Loaded Cars Waiting Placement for Unloading**

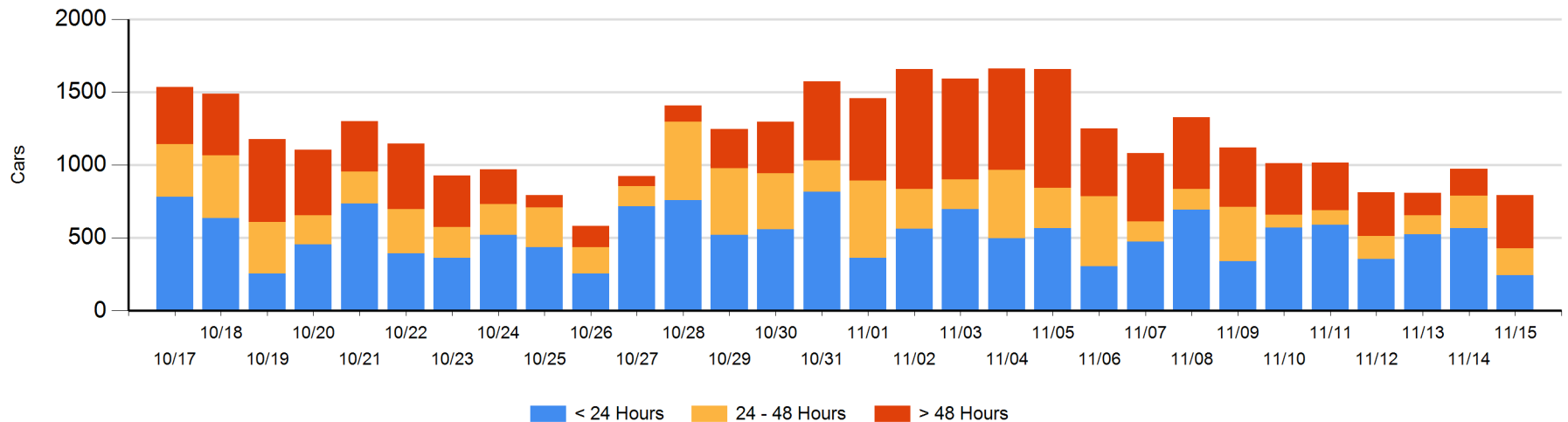
**Today**

	< 24 Hrs	24 - 48 Hrs	> 48-72 Hrs	> 72 Hrs	Total On Hand
CN	94	143	67	88	392
CP	149	42	155	57	403
SRY					0

**Change in Last 24 Hours**

	< 24 Hrs	24-48 Hrs	48 - 72 Hrs	> 72 Hrs
CN	-304	76	34	24
CP	-19	-113	103	20
SRY				

**Loaded Cars on Hand Vancouver Waiting for Placement - Last 30 Days All Railways**



**Port Terminal Status**

**Prince Rupert**

Daily Activity for 11/15/2018

	Cars Arrived	Cars Received in Interchange	Cars Delivered in Interchange	Cars Placed for Unloading	Loads on Wheels at Destination As of 11/15/2018
CN	237			348	128

**Port Unloads**

	11/15	11/14	Week To Date	Last Week
CN	225	124	872	1,266

**Age Profile of Loaded Cars Waiting Placement for Unloading**

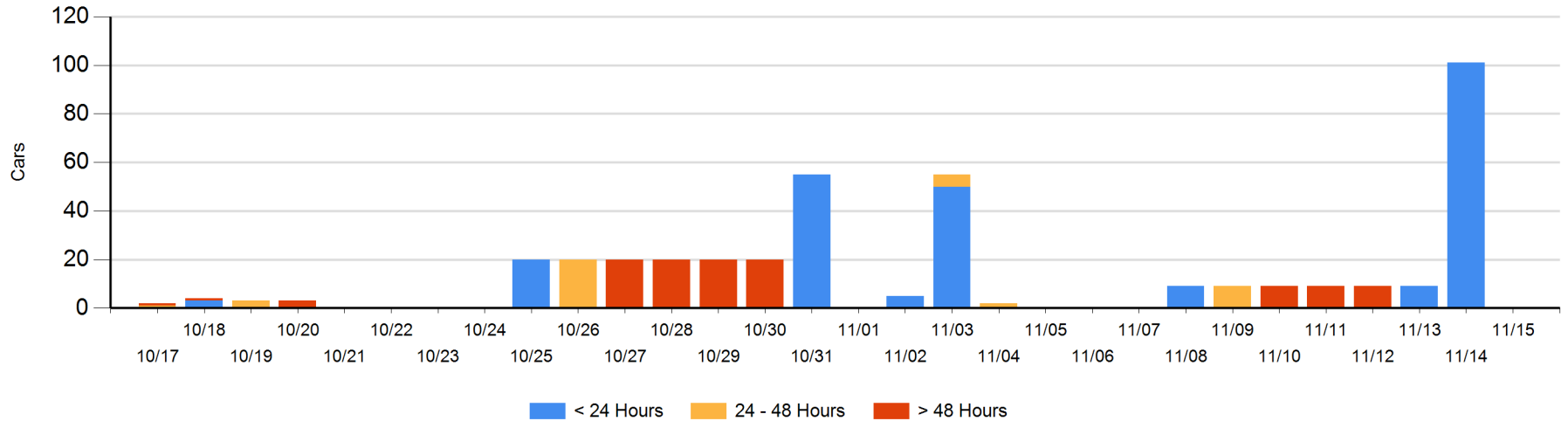
**Today**

	< 24 Hrs	24 - 48 Hrs	> 48-72 Hrs	> 72 Hrs	Total On Hand
CN					0

**Change in Last 24 Hours**

	< 24 Hrs	24-48 Hrs	48 - 72 Hrs	> 72 Hrs
CN	-101			

Loaded Cars on Hand Prince Rupert Waiting for Placement - Last 30 Days All Railways



**Port Terminal Status**

**Thunder Bay**

Daily Activity for 11/15/2018

	Cars Arrived	Cars Received in Interchange	Cars Delivered in Interchange	Cars Placed for Unloading	Loads on Wheels at Destination As of 11/15/2018
CN					5
CP				129	142

**Port Unloads**

	11/15	11/14	Week To Date	Last Week
CN	9	103	215	542
CP	81	94	547	1,015

**Age Profile of Loaded Cars Waiting Placement for Unloading**

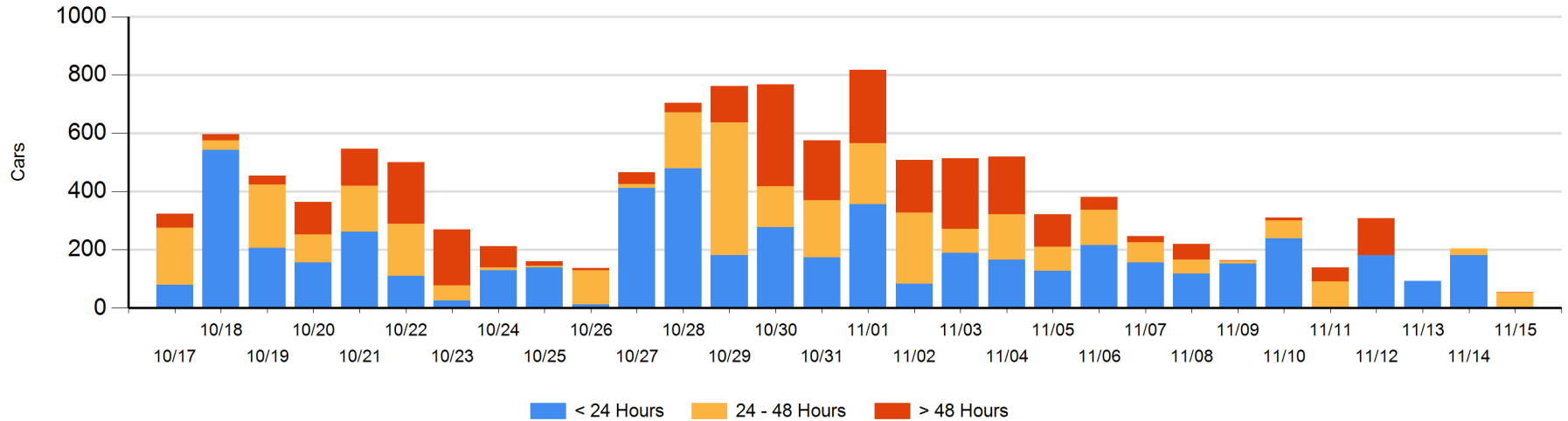
**Today**

	< 24 Hrs	24 - 48 Hrs	> 48-72 Hrs	> 72 Hrs	Total On Hand
CN			2		2
CP		53			53

**Change in Last 24 Hours**

	< 24 Hrs	24-48 Hrs	48 - 72 Hrs	> 72 Hrs
CN		-2	2	
CP	-182	33		

**Loaded Cars on Hand Thunder Bay Waiting for Placement - Last 30 Days All Railways**



## Measurement Definitions

Loads on Wheels	<p>Count of loaded rail cars including all rail cars that have been released loaded at origin and have not been reported by the railway as unloaded at destination.</p> <p>Counts include all rail cars (hopper cars and boxcars) moving within a pipeline.</p>
Loads Not Moving	<p>Loaded rail cars for which the railways have not reported a movement event for 48 hours or more whether the rail car is at origin, enroute or at destination.</p>
Port Unloads	<p>Count of rail cars reported by railways as unloaded at the western port destinations of Vancouver, Prince Rupert and Thunder Bay.</p> <p>Unload counts include all rail cars (hopper cars and boxcars) unloaded by all receivers including major port terminals, transloaders and other receivers.</p>
Cars Arrived	<p>Count of rail cars reported as arrived at the destination railway terminal.</p>
Cars Received in Interchange	<p>Count of rail cars received in interchange by each railway within a destination railway terminal. Interchange activity is tracked for the Vancouver and Thunder Bay pipelines as applicable.</p>
Cars Delivered in Interchange	<p>Count of rail cars delivered in interchange by each railway within a destination railway terminal. Interchange activity is tracked for the Vancouver and Thunder Bay pipelines as applicable.</p>
Cars Placed for Unloading	<p>Count of rail cars reported by the railways as placed loaded at the receiver's facility for unloading.</p>
Loads on Wheels at Destination	<p>Count of rail cars that remain under load within the destination railway terminal including rail cars that have been reported as placed for unloading but not yet reported as unloaded.</p>
Waiting Placement for Unloading	<p>Count of rail cars that have been reported as arrived at the destination railway terminal but not reported as placed for unloading by the railway.</p> <p>For the Ports of Vancouver, Prince Rupert and Thunder Bay the count of rail cars waiting placement for unloading is categorized by age – i.e. the elapsed time from arrival at destination to the current report date.</p>