

## SPEED READ

- Loads on wheels decreased overnight, marking a decline in both CN and CP volumes. On a net basis, volumes fell due to lower traffic across all corridors other than E. Canada.
- Network fluidity deteriorated overnight, led by an increase in idle car counts on both CN and CP by 4% (+58) and 3% (+43). The total count of cars for 4+ days on both railways increased 38% (+475) overnight - currently at 1,724 cars, the highest seen in the last 30 days.
- Three days in Week 18 unloads now behind prior week's performance by 150 unloads, reflecting lower unloads at Vancouver and Prince Rupert offset by improved week over week performance at Thunder Bay.

---

## Loads on Wheels

- Loads on wheels fell 5% (-583) overnight, due to reduced traffic on both CN and CP - combined total at 12,181 and 3% above the trailing 30-day average.
- On a net basis, the decline in loads on wheels indicates reduced volumes across all corridors other than E. Canada.
- CN volumes decreased for the third consecutive day, down 1% (-55) overnight, with lower volumes across all corridors other than Vancouver. System wide CN loads on wheels currently at 6,478 and 9% above the trailing 30-day average.
- CP volumes decreased 8% (-493) overnight, driven by a decline in traffic in the Thunder Bay and Vancouver corridors. CP system wide loads on wheels currently at 5,551 and 2% below the trailing 30-day average.
- Vancouver currently at 7,788, fell slightly by 1% (-42) overnight, now 8% above the trailing 30-day average.
- The Prince Rupert pipeline presently at 1,560, decreased 9% (-148) overnight, and 7% above the trailing 30-day average.
- Thunder Bay volumes declined significantly by 16% (-365) overnight - currently at 1,947 and 5% above the trailing 30-day average, with 63% of traffic moving on CP.

## Hopper Car Rationing

- CN rationed 166 hopper cars in week 16.

## Loads Not Moving

- **The count of cars not moving for 48+ hours increased 3% (+101) overnight, marking higher counts on both CN and CP. Idle car counts currently at 3,119 and 22% above the trailing 30-day average.**
- CN
  - **The count of idle cars for 48+ hours rose 4% (+58) overnight - currently at 1,470 cars.**
  - The number of cars idle for 4+ days increased 29% (+141) overnight - currently at 627 cars, the highest seen in the last 30 days.
  - The count of cars not moving for 7+ days increased for the fourth consecutive day, up 33% (+72) overnight - currently at 288 cars.
  - Vancouver represents 83% of all idle cars.
  - In total 50% of all idle cars are dwelling at origin locations.
- CP
  - **CP idle car counts for 48+ hours increased 3% (+43) overnight - currently at 1,649 cars.**
  - The number of cars idle for 4+ days increased 44% (+334) overnight - currently at 1,097 cars.
  - The number of cars idle for 7+ days fell significantly by 69% (-242) overnight - currently at 111 cars, the lowest seen in the last 30 days.
  - Vancouver accounts for 63% of all idle cars.

- In total 71% of all idle cars are dwelling at origin locations.

## **Port Performance**

- CN and CP reported a total of 1,504 cars unloaded at the three major ports, the highest seen in the last 30 days, now 19% above the trailing 30-day average. Three days in Week 18 unloads now behind last week's pace by 150 unloads, reflecting lower unloads at Vancouver and Prince Rupert offset by higher unloads at Thunder Bay.
- Vancouver
  - 891 unloads reported by CN and CP at the Port of Vancouver; CN - 458 and CP - 433. Three days in Week 18 unloads are tracking behind last week's performance by more than 200 unloads.
  - There are more than 1,150 cars on site at Vancouver with more than 550 cars arriving at the port in the last 24 hours.
  - CN and CP have more than 2,000 cars in British Columbia en route to Vancouver, with about 1,450 cars at Kamloops and west, and 54% of traffic moving on CP.
- Prince Rupert
  - Prince Rupert reported 200 unloads, now behind last week's unloads after three days by fewer than 50 unloads.
  - Loads on wheels now above 1,000 cars - currently at 1,560 cars.
  - There are more than 400 cars west of Jasper en route to Prince Rupert.
  - There are fewer than 100 cars on site at Prince Rupert with fewer than 150 cars arriving at the port in the last 24 hours. Given the structure of the pipeline, there appears to be sufficient cars available to support unloads in the next few days.
- Thunder Bay
  - 413 unloads, the highest seen in the last 30 days, were reported at Thunder Bay yesterday. Three days in Week 18 unloads are tracking ahead of last week's pace by 100 unloads.
  - There are 800 cars on site at Thunder Bay with 350 cars arriving at the port in the prior 24 hours.
  - There are 500 cars en route to Thunder Bay from Winnipeg and east. Cars on hand and those en route should support unloads for the balance of the week.

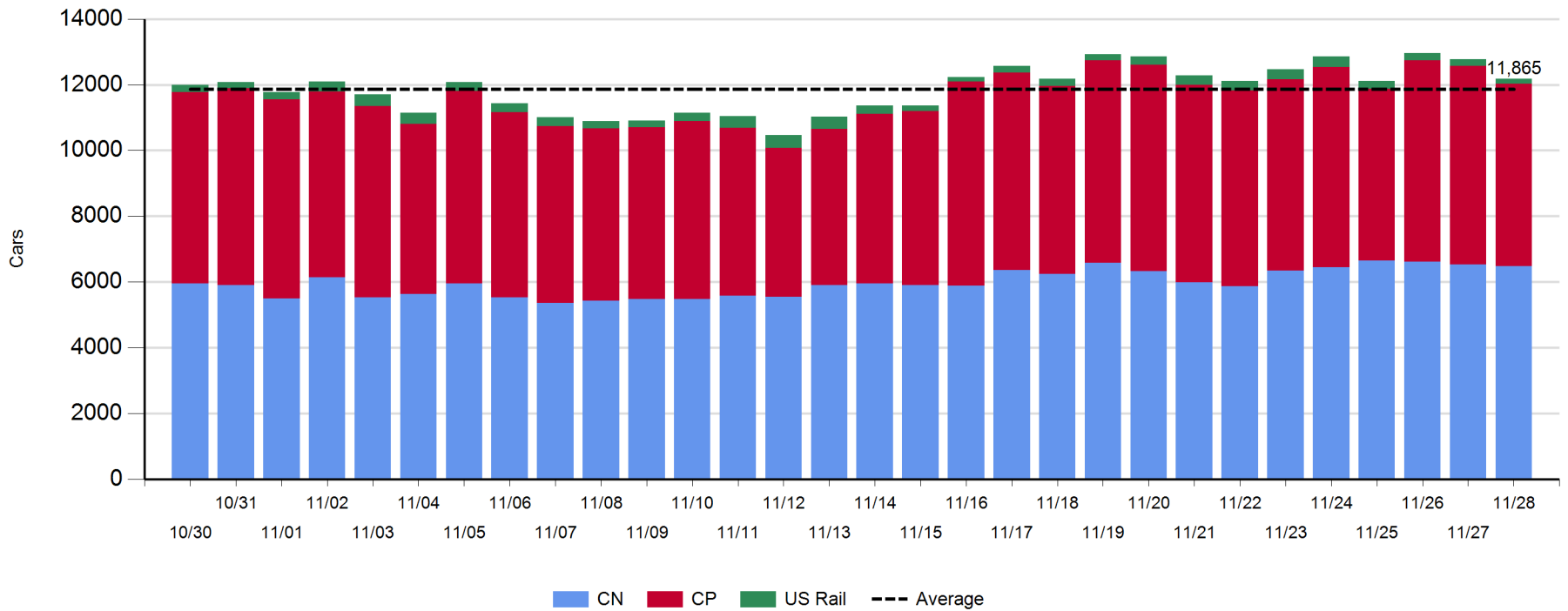
**Daily Loads on Wheels - 11/28/2018**

	E Canada	Prince Rupert	Thunder Bay	USA/MEX	Vancouver	Total
CN	292	1,560	714	201	3,711	6,478
CP	48		1,233	221	4,049	5,551
Short Line	1				28	29
US Rail				123		123
	341	1,560	1,947	545	7,788	12,181

**Change in Loads on Wheels - Prior 24 Hours**

	E Canada	Prince Rupert	Thunder Bay	USA/MEX	Vancouver	Total
CN	-1	-148	-70	-16	180	-55
CP	0		-295	0	-198	-493
Short Line	1				-24	-23
US Rail				-12		-12
	0	-148	-365	-28	-42	-583

**Loads on Wheels - Prior 30 Days**

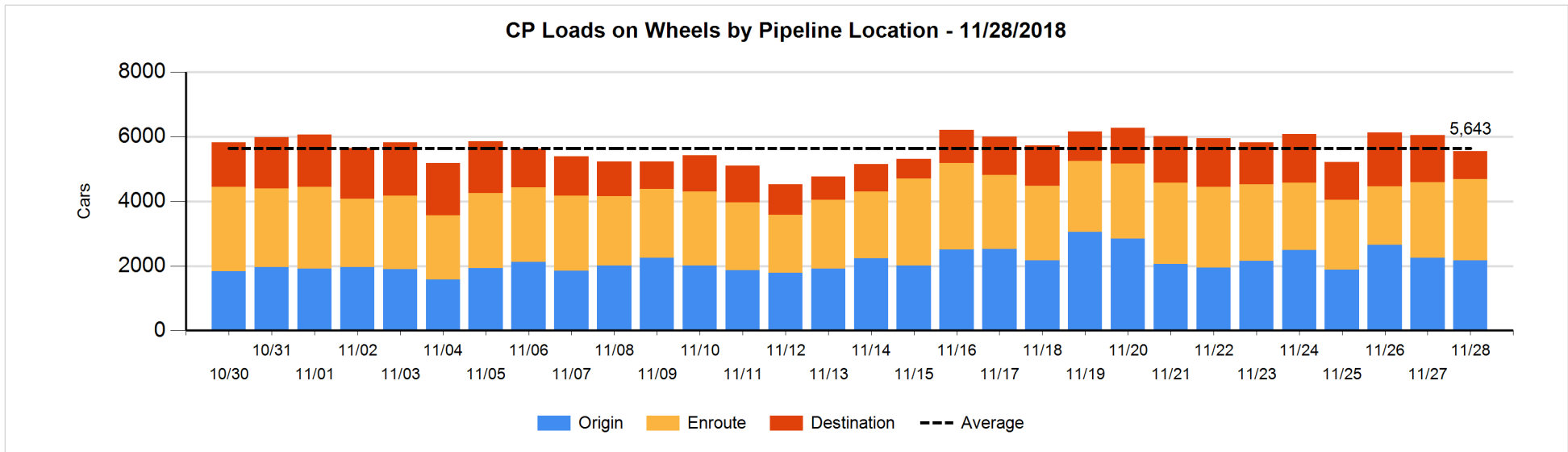
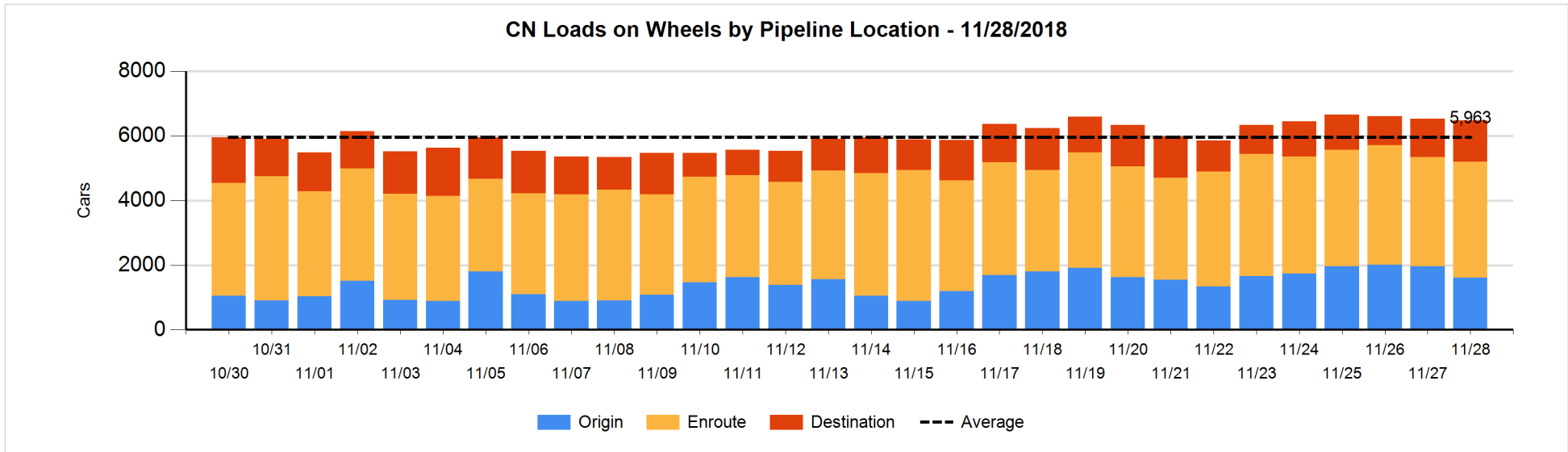


**Daily Loads on Wheels By Pipeline Location - 11/28/2018**

	E Canada	Prince Rupert	Thunder Bay	USA/MEX	Vancouver	Total
CN						
Origin	35	248	81	39	1,200	1,603
Enroute	178	1,225	153	151	1,887	3,594
Destination	79	87	480	11	624	1,281
	292	1,560	714	201	3,711	6,478
CP						
Origin	2		468	26	1,674	2,170
Enroute	46		453	162	1,861	2,522
Destination			312	33	514	859
	48		1,233	221	4,049	5,551
US Rail / Short Line						
Origin						
Enroute				82		82
Destination	1			41	28	70
	1			123	28	152

**Change in Daily Loads on Wheels By Pipeline Location - Prior 24 Hours**

	E Canada	Prince Rupert	Thunder Bay	USA/MEX	Vancouver	Total
CN						
Origin	32	-458	-76	14	127	-361
Enroute	-27	427	-250	-11	82	221
Destination	-6	-117	256	-19	-29	85
	-1	-148	-70	-16	180	-55
CP						
Origin	0		21	-8	-92	-79
Enroute	0		1	-15	187	173
Destination			-317	23	-293	-587
	0		-295	0	-198	-493
US Rail / Short Line						
Origin						
Enroute				-18		-18
Destination	1			6	-24	-17
	1			-12	-24	-35

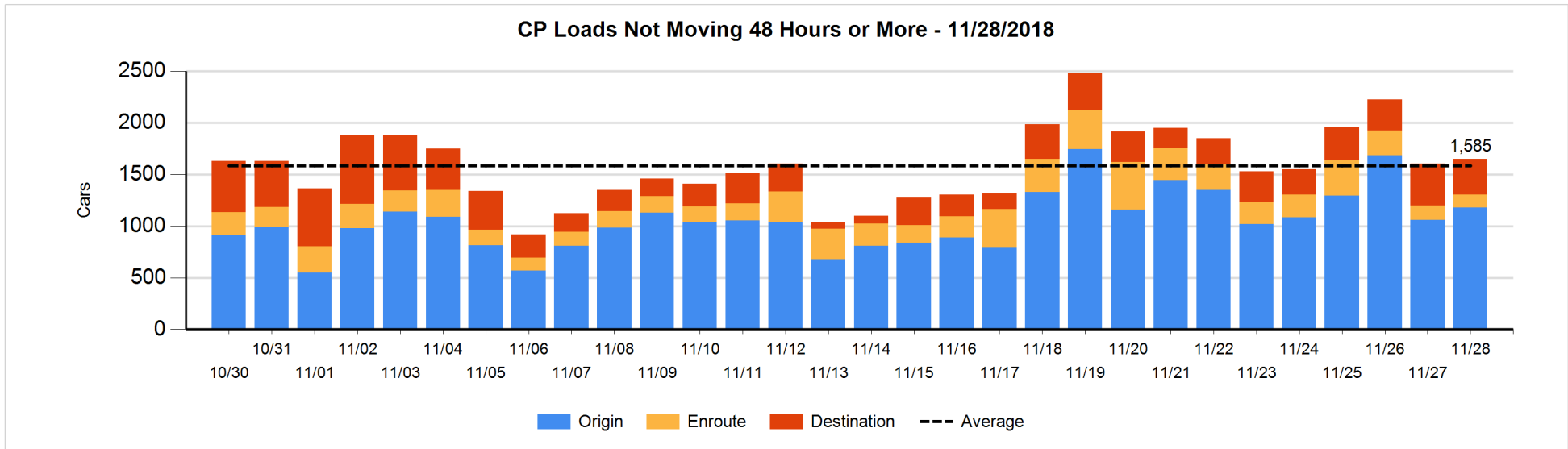
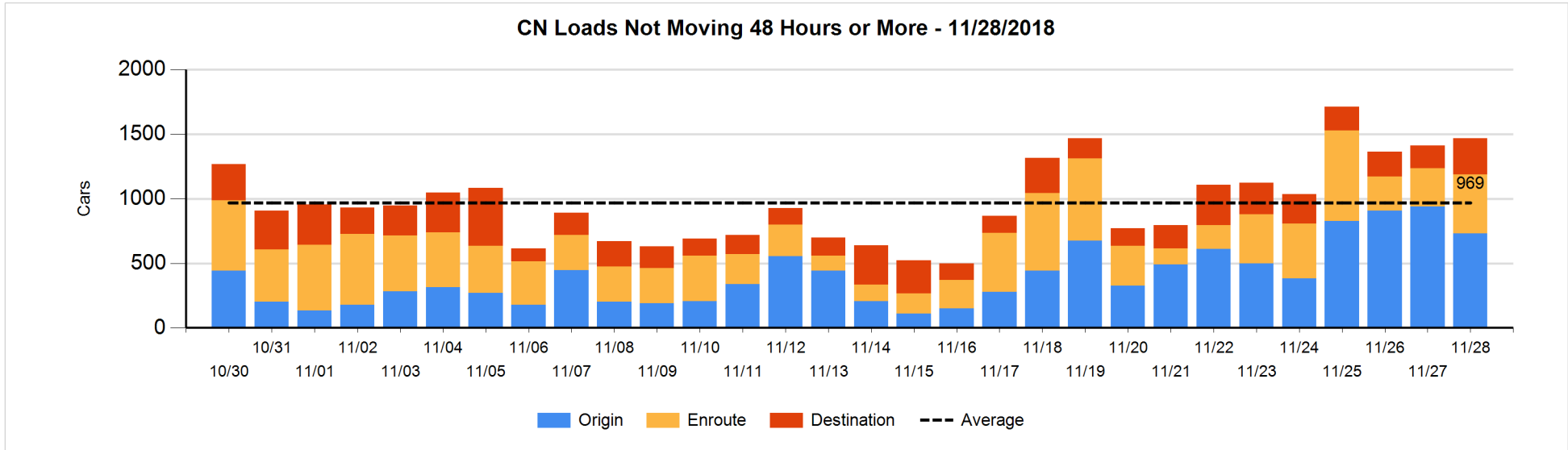


**Loads Not Moving 48 Hours or More - 11/28/2018**

	E Canada	Prince Rupert	Thunder Bay	USA/MEX	Vancouver	Total
<b>CN</b>						
Origin		95		20	615	730
Enroute	57	13	1	11	374	456
Destination	7	2	32	10	233	284
	64	110	33	41	1222	1470
<b>CP</b>						
Origin	1		223	6	949	1179
Enroute	16		5	75	28	124
Destination			292		54	346
	17		520	81	1031	1649
<b>US Rail / Short Line</b>						
Origin						
Enroute				22		22
Destination				24	23	47
				46	23	69

**Change in Loads Not Moving 48 Hours or More - 11/28/2018**

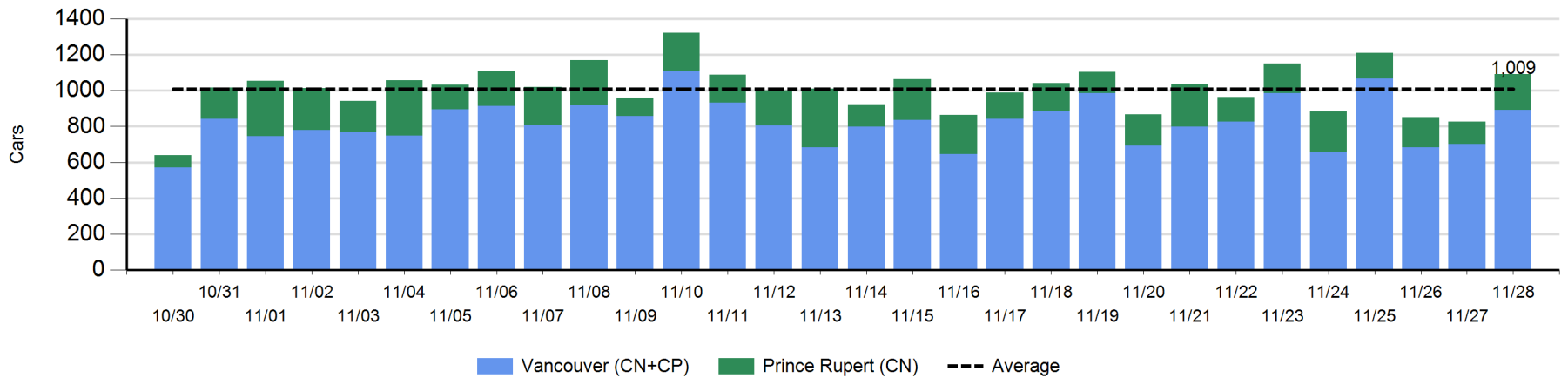
	E Canada	Prince Rupert	Thunder Bay	USA/MEX	Vancouver	Total
<b>CN</b>						
Origin		-309		18	83	-208
Enroute	45	-24	0	-15	153	159
Destination	0	0	9	0	98	107
	45	-333	9	3	334	58
<b>CP</b>						
Origin	0		223	3	-107	119
Enroute	-4		-1	20	-30	-15
Destination			11		-72	-61
	-4		233	23	-209	43
<b>US Rail / Short Line</b>						
Origin						
Enroute				-5		-5
Destination				2	-3	-1
				-3	-3	-6



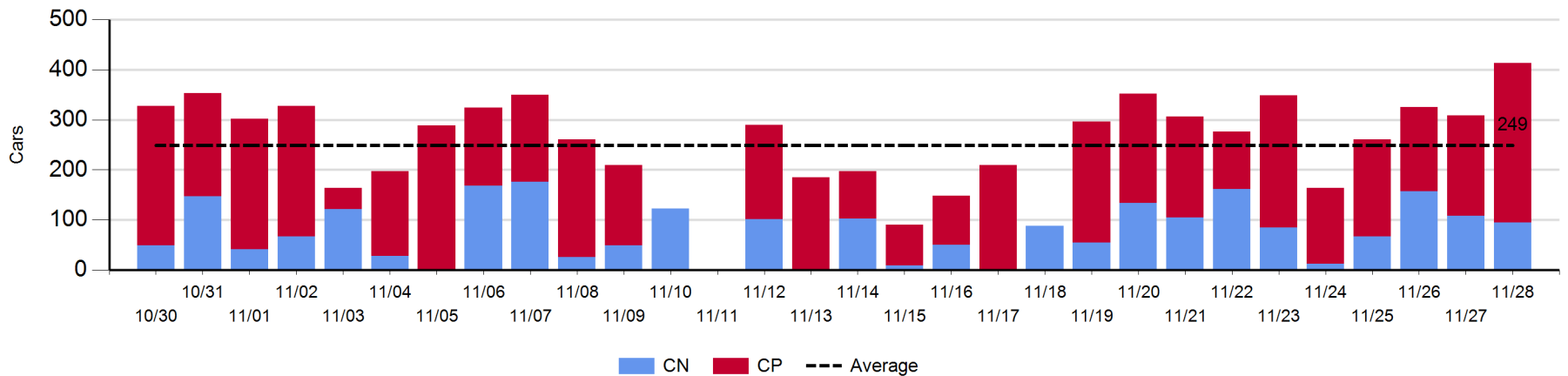
Port Unloads - 11/28/2018

	Prince Rupert	Vancouver	West Coast Total	Thunder Bay	Total
CN	200	458	658	95	753
CP		433	433	318	751
	200	891	1,091	413	1,504

West Coast Port Unloads - Prior 30 Days



Thunder Bay Port Unloads - Prior 30 Days





**Port Terminal Status**

**Vancouver**

Daily Activity for 11/28/2018

	Cars Arrived	Cars Received in Interchange	Cars Delivered in Interchange	Cars Placed for Unloading	Loads on Wheels at Destination As of 11/28/2018
CN	437	269		368	624
CP	132		269	488	514
SRY				27	28

**Port Unloads**

	11/28	11/27	Week To Date	Last Week
CN	458	357	1,159	2,955
CP	433	345	1,116	3,061
SRY	24	13	43	89

**Age Profile of Loaded Cars Waiting Placement for Unloading**

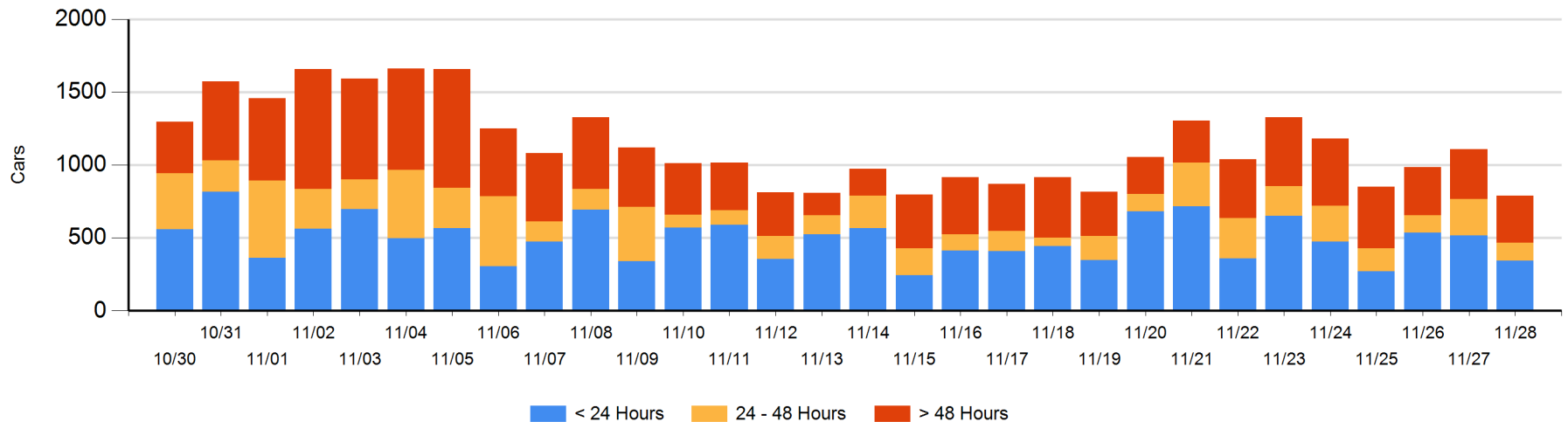
**Today**

	< 24 Hrs	24 - 48 Hrs	> 48-72 Hrs	> 72 Hrs	Total On Hand
CN	212	78	41	134	465
CP	130	45	56	93	324
SRY					0

**Change in Last 24 Hours**

	< 24 Hrs	24-48 Hrs	48 - 72 Hrs	> 72 Hrs
CN	122	-20	29	-6
CP	-297	-106	-34	-6
SRY				

**Loaded Cars on Hand Vancouver Waiting for Placement - Last 30 Days All Railways**



**Port Terminal Status**

**Prince Rupert**

Daily Activity for 11/28/2018

	Cars Arrived	Cars Received in Interchange	Cars Delivered in Interchange	Cars Placed for Unloading	Loads on Wheels at Destination As of 11/28/2018
CN	131			137	87

**Port Unloads**

	11/28	11/27	Week To Date	Last Week
CN	200	123	491	1,196

**Age Profile of Loaded Cars Waiting Placement for Unloading**

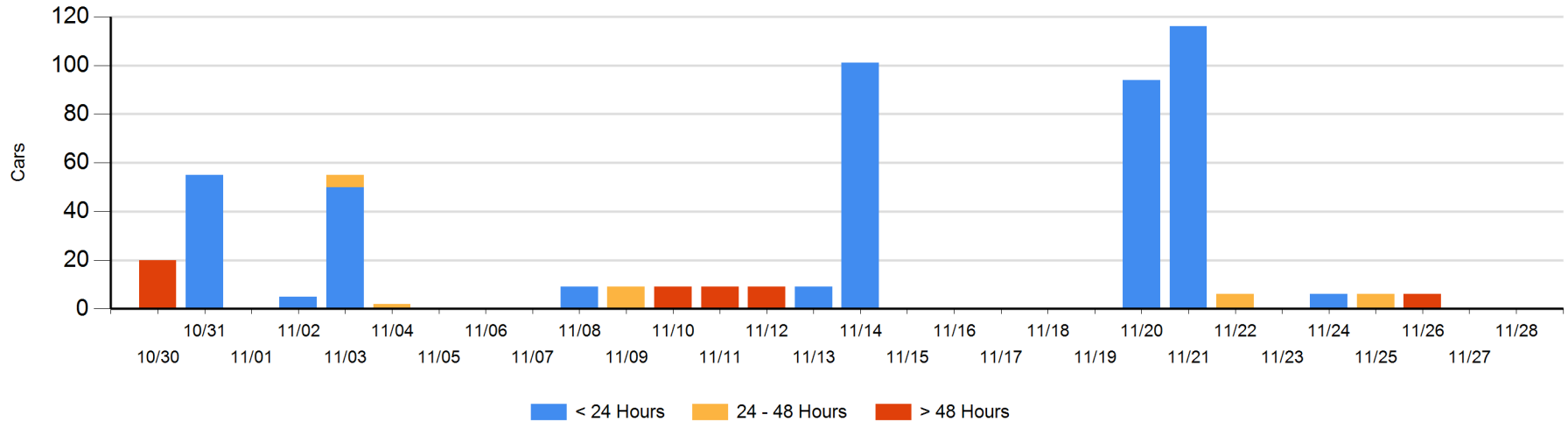
**Today**

	< 24 Hrs	24 - 48 Hrs	> 48-72 Hrs	> 72 Hrs	Total On Hand
CN					0

**Change in Last 24 Hours**

	< 24 Hrs	24-48 Hrs	48 - 72 Hrs	> 72 Hrs
CN				

Loaded Cars on Hand Prince Rupert Waiting for Placement - Last 30 Days All Railways



**Port Terminal Status**

**Thunder Bay**

Daily Activity for 11/28/2018

	Cars Arrived	Cars Received in Interchange	Cars Delivered in Interchange	Cars Placed for Unloading	Loads on Wheels at Destination As of 11/28/2018
CN	351			142	480
CP	1			224	312

**Port Unloads**

	11/28	11/27	Week To Date	Last Week
CN	95	108	360	620
CP	318	201	687	1,384

**Age Profile of Loaded Cars Waiting Placement for Unloading**

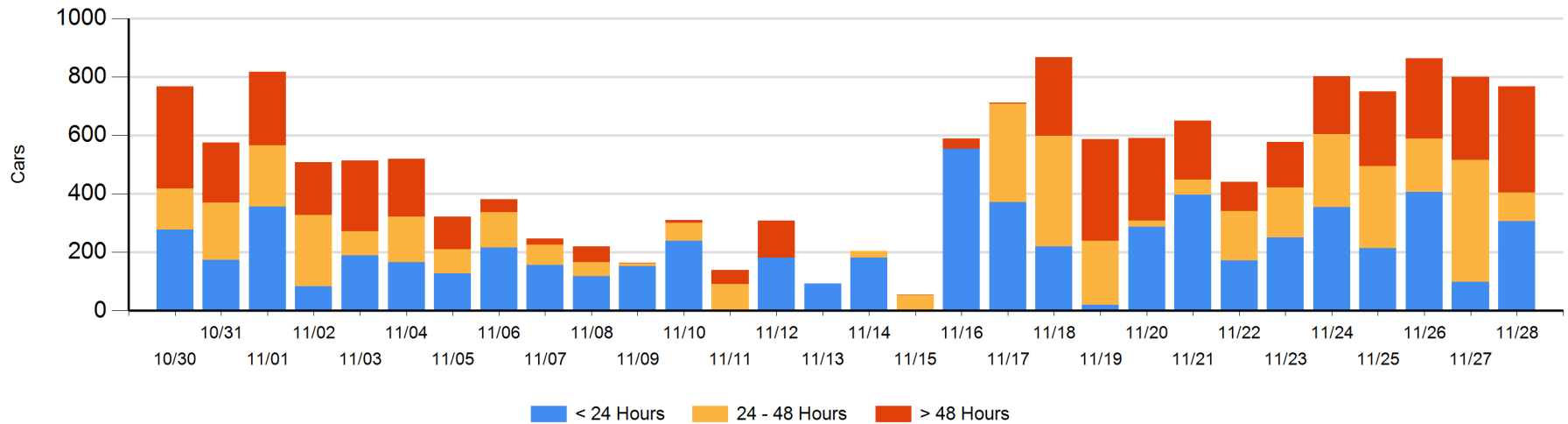
**Today**

	< 24 Hrs	24 - 48 Hrs	> 48-72 Hrs	> 72 Hrs	Total On Hand
CN	305	96	7	20	428
CP	1	2	145	192	340

**Change in Last 24 Hours**

	< 24 Hrs	24-48 Hrs	48 - 72 Hrs	> 72 Hrs
CN	209	-7	-13	20
CP	-1	-312	66	6

Loaded Cars on Hand Thunder Bay Waiting for Placement - Last 30 Days All Railways



## Measurement Definitions

Loads on Wheels	<p>Count of loaded rail cars including all rail cars that have been released loaded at origin and have not been reported by the railway as unloaded at destination.</p> <p>Counts include all rail cars (hopper cars and boxcars) moving within a pipeline.</p>
Loads Not Moving	<p>Loaded rail cars for which the railways have not reported a movement event for 48 hours or more whether the rail car is at origin, enroute or at destination.</p>
Port Unloads	<p>Count of rail cars reported by railways as unloaded at the western port destinations of Vancouver, Prince Rupert and Thunder Bay.</p> <p>Unload counts include all rail cars (hopper cars and boxcars) unloaded by all receivers including major port terminals, transloaders and other receivers.</p>
Cars Arrived	<p>Count of rail cars reported as arrived at the destination railway terminal.</p>
Cars Received in Interchange	<p>Count of rail cars received in interchange by each railway within a destination railway terminal. Interchange activity is tracked for the Vancouver and Thunder Bay pipelines as applicable.</p>
Cars Delivered in Interchange	<p>Count of rail cars delivered in interchange by each railway within a destination railway terminal. Interchange activity is tracked for the Vancouver and Thunder Bay pipelines as applicable.</p>
Cars Placed for Unloading	<p>Count of rail cars reported by the railways as placed loaded at the receiver's facility for unloading.</p>
Loads on Wheels at Destination	<p>Count of rail cars that remain under load within the destination railway terminal including rail cars that have been reported as placed for unloading but not yet reported as unloaded.</p>
Waiting Placement for Unloading	<p>Count of rail cars that have been reported as arrived at the destination railway terminal but not reported as placed for unloading by the railway.</p> <p>For the Ports of Vancouver, Prince Rupert and Thunder Bay the count of rail cars waiting placement for unloading is categorized by age – i.e. the elapsed time from arrival at destination to the current report date.</p>