

SPEED READ

- Loads on wheels increased overnight, reflecting a rise in both CN and CP volumes. On a net basis, volumes increased due to higher traffic in the Prince Rupert, Vancouver and USA/MEX corridors offset by lower volumes in the Thunder Bay and E. Canada corridors.
- Network fluidity improved overnight, led by a decline in idle car counts on CN by 12% (-162) offset by an increase in idle car counts on CP by 2% (+36). The total count of cars for 4+ days on both railways increased 43% (+375) overnight - presently at 1,245 cars, the highest seen in the last 30 days.
- One day in Week 10 unloads now ahead of prior week's performance by 300 unloads, reflecting improved week over week performance across all three major ports - Vancouver, Thunder Bay and Prince Rupert.

Loads on Wheels

- Loads on wheels rose 2% (+237) overnight, due to higher traffic levels on both CN and CP - combined total at 11,112, the highest seen in the last 30 days, and 15% above the trailing 30-day average.
- On a net basis, the rise in loads on wheels reflects higher volumes in the Prince Rupert, Vancouver and USA/MEX corridors offset by lower volumes in the Thunder Bay and E. Canada corridors.
- CN volumes increased 2% (+104) overnight, with higher traffic in the Prince Rupert and Vancouver corridors offset by reduced traffic in the Thunder Bay and E. Canada corridors. System wide CN loads on wheels currently at 5,208 and 12% above the trailing 30-day average.
- CP volumes rose 3% (+141) overnight and have now increased for the fourth consecutive day, driven by a rise in volumes across all corridors other than Thunder Bay. CP system wide loads on wheels presently at 5,676, the highest seen in the last 30 days, and 20% above the trailing 30-day average.
- Vancouver now at 5,979, increased 3% (+147) overnight, now 16% above the trailing 30-day average.
- The Prince Rupert pipeline presently at 1,883, the highest seen in the last 30 days, rose 10% (+169) overnight and 39% above the trailing 30-day average.
- Thunder Bay volumes fell 5% (-122) overnight - now at 2,138 and 23% above the trailing 30-day average, with 74% of traffic moving on CP.

Hopper Car Rationing

- No hopper car rationing was reported for either CN or CP in week 9.

Loads Not Moving

- **The count of cars not moving for 48+ hours declined 4% (-126) overnight, reflecting lower counts on CN offset by higher counts on CP. Idle car counts presently at 3,136 and 92% above the trailing 30-day average.**
- CN
 - **The count of idle cars for 48+ hours declined 12% (-162) overnight - currently at 1,204 cars.**
 - The number of cars idle for 4+ days surged by 65% (+271) overnight and have now increased for the third consecutive day - presently at 686 cars, the highest seen in the last 30 days.
 - The count of cars not moving for 7+ days increased 4% (+2) overnight - presently at 56 cars.
 - Vancouver represents 76% of all idle cars.
 - In total 46% of all idle cars are dwelling at origin locations.
- CP
 - **CP idle car counts for 48+ hours rose by 2% (+36) overnight and have now increased for three consecutive days - currently at 1,932 cars, the highest seen in the last 30 days.**
 - The number of cars idle for 4+ days gained 23% (+104) overnight - currently at 559 cars.

- The number of cars idle for 7+ days decreased 11% (-19) overnight - presently at 153 cars.
- Vancouver accounts for 55% of all idle cars.
- In total 54% of all idle cars are dwelling at origin locations.

Port Performance

- CN and CP reported a total of 1,332 cars unloaded at the three major ports, now 22% above the trailing 30-day average. One day in Week 10 unloads are tracking ahead of last week's pace by 300 unloads, marking higher unloads across all three major ports - Vancouver, Thunder Bay and Prince Rupert.
- Vancouver
 - 649 unloads reported by CN and CP at the Port of Vancouver; CN - 250 and CP - 399. One day in Week 10 unloads are tracking ahead of last week's performance by more than 100 unloads.
 - There are 1,400 cars on site at Vancouver with more than 700 cars arriving at the port in the last 24 hours.
 - CN and CP have more than 600 cars in British Columbia en route to Vancouver, with around 400 cars at Kamloops and west, and 71% of traffic currently moving on CP.
- Prince Rupert
 - Prince Rupert reported 331 unloads, now ahead of last week's unloads after one day by about 150 unloads.
 - Loads on wheels now above 1,000 cars - currently at 1,883 cars.
 - There are 600 cars west of Jasper en route to Prince Rupert.
 - There are about 50 cars on site at Prince Rupert with around 150 cars arriving at the port in the last 24 hours. Given the structure of the pipeline, there appears to be sufficient cars available to support unloads in the next few days.
- Thunder Bay
 - 352 unloads were reported at Thunder Bay yesterday. One day in Week 10 unloads are tracking ahead of last week's pace by more than 50 unloads.
 - There are 1,000 cars on site at Thunder Bay with more than 300 cars arriving at the port in the prior 24 hours.
 - There are more than 150 cars en route to Thunder Bay from Winnipeg and east. Cars on hand and those en route should support unloads in the next few days.

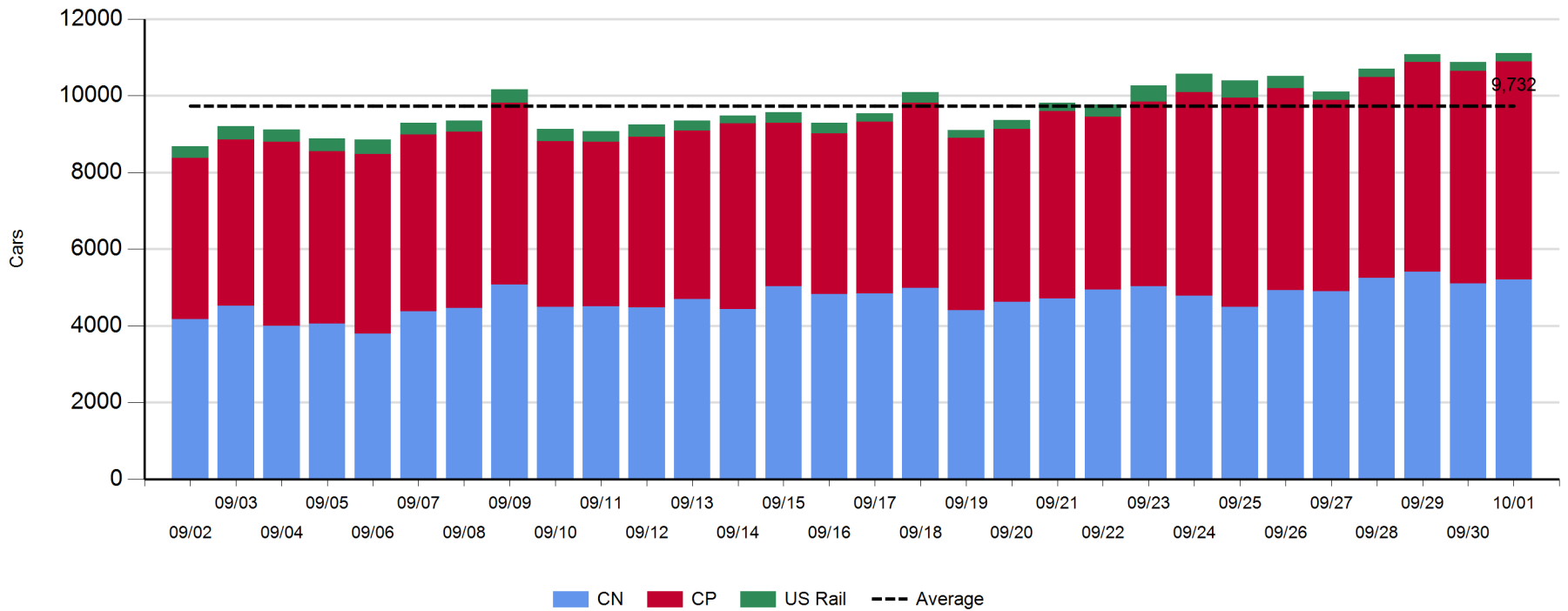
Daily Loads on Wheels - 10/1/2018

	E Canada	Prince Rupert	Thunder Bay	USA/MEX	Vancouver	Total
CN	121	1,883	564	179	2,461	5,208
CP	141		1,574	474	3,487	5,676
Short Line	32				31	63
US Rail				165		165
	294	1,883	2,138	818	5,979	11,112

Change in Loads on Wheels - Prior 24 Hours

	E Canada	Prince Rupert	Thunder Bay	USA/MEX	Vancouver	Total
CN	-57	169	-66	0	58	104
CP	1		-56	104	92	141
Short Line	13				-3	10
US Rail				-18		-18
	-43	169	-122	86	147	237

Loads on Wheels - Prior 30 Days

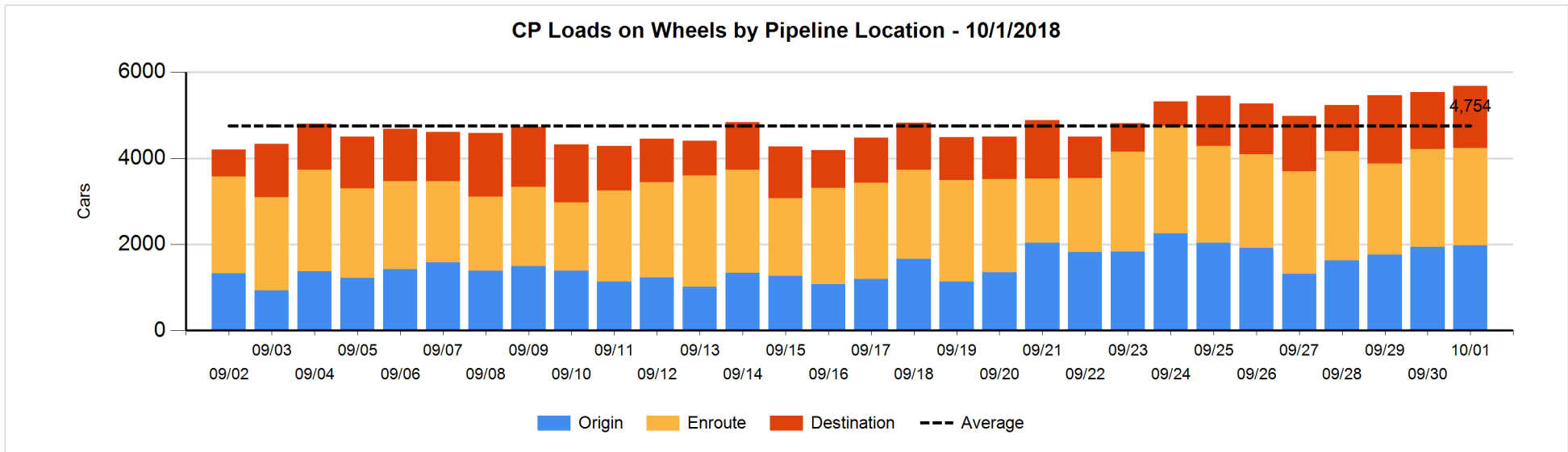
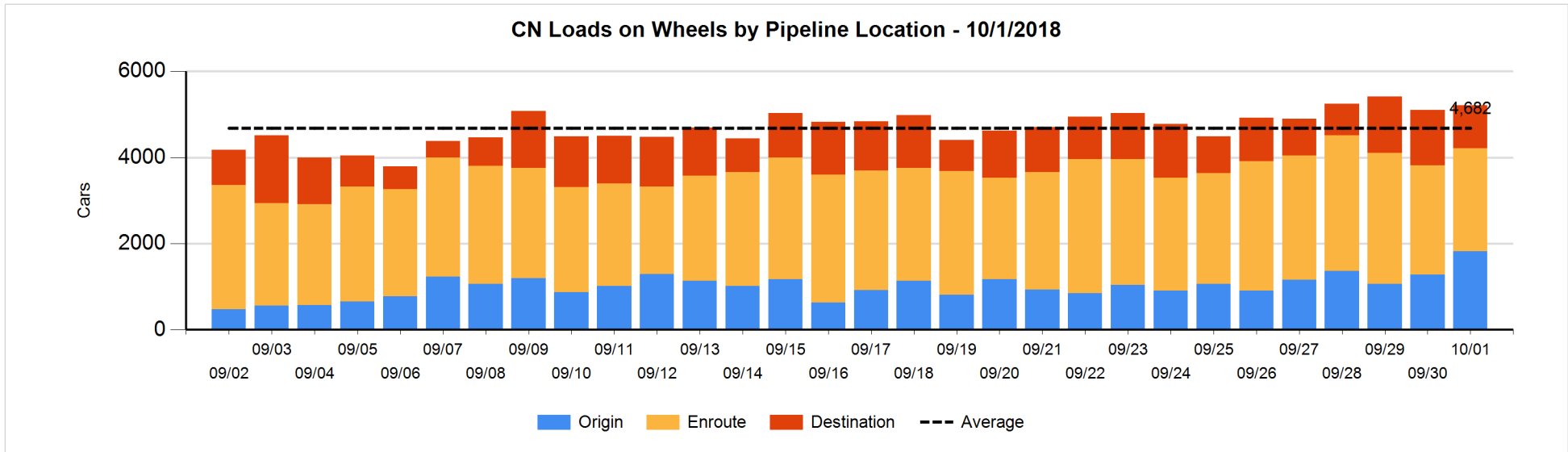


Daily Loads on Wheels By Pipeline Location - 10/1/2018

	E Canada	Prince Rupert	Thunder Bay	USA/MEX	Vancouver	Total
CN						
Origin	10	929	98	4	774	1,815
Enroute	100	923	48	156	1,175	2,402
Destination	11	31	418	19	512	991
	121	1,883	564	179	2,461	5,208
CP						
Origin	24		457	186	1,304	1,971
Enroute	117		527	288	1,331	2,263
Destination			590		852	1,442
	141		1,574	474	3,487	5,676
US Rail / Short Line						
Origin						
Enroute	11			106		117
Destination	21			59	31	111
	32			165	31	228

Change in Daily Loads on Wheels By Pipeline Location - Prior 24 Hours

	E Canada	Prince Rupert	Thunder Bay	USA/MEX	Vancouver	Total
CN						
Origin	0	368	98	-15	89	540
Enroute	-45	-4	-104	18	-3	-138
Destination	-12	-195	-60	-3	-28	-298
	-57	169	-66	0	58	104
CP						
Origin	1		-150	73	105	29
Enroute	0		66	31	-106	-9
Destination			28		93	121
	1		-56	104	92	141
US Rail / Short Line						
Origin						
Enroute	2			3		5
Destination	11			-21	-3	-13
	13			-18	-3	-8

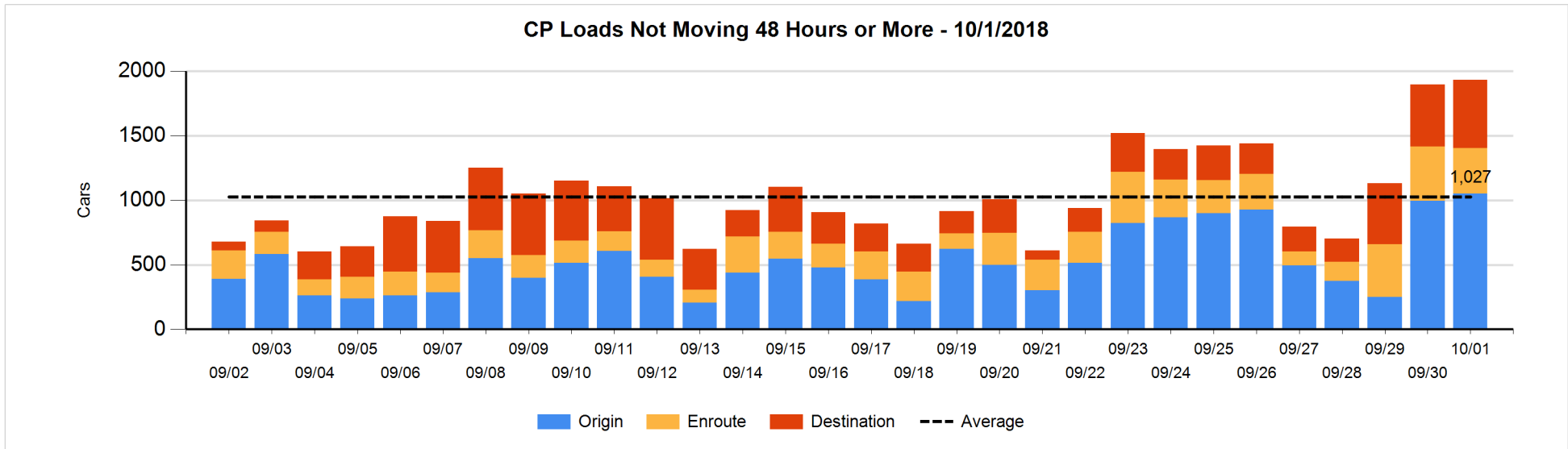
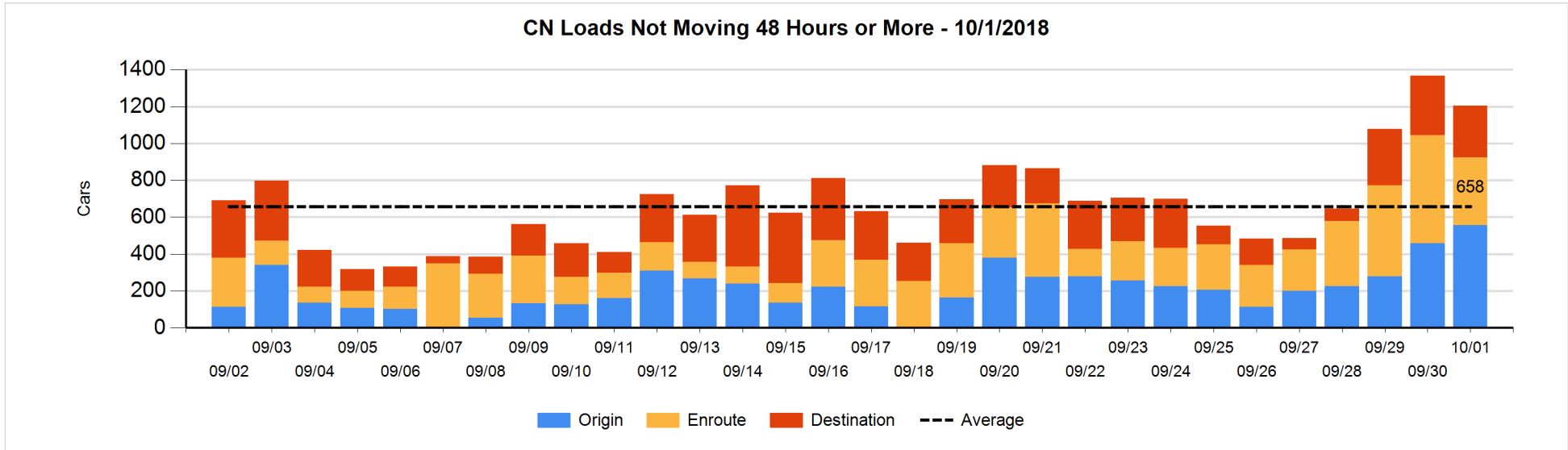


Loads Not Moving 48 Hours or More - 10/1/2018

	E Canada	Prince Rupert	Thunder Bay	USA/MEX	Vancouver	Total
CN						
Origin	10	105			442	557
Enroute	50	41	1	45	230	367
Destination	9	1	6	15	249	280
	69	147	7	60	921	1204
CP						
Origin	23		287	44	696	1050
Enroute	4		44	153	152	353
Destination			309		220	529
	27		640	197	1068	1932
US Rail / Short Line						
Origin						
Enroute	9			19		28
Destination				27	20	47
	9			46	20	75

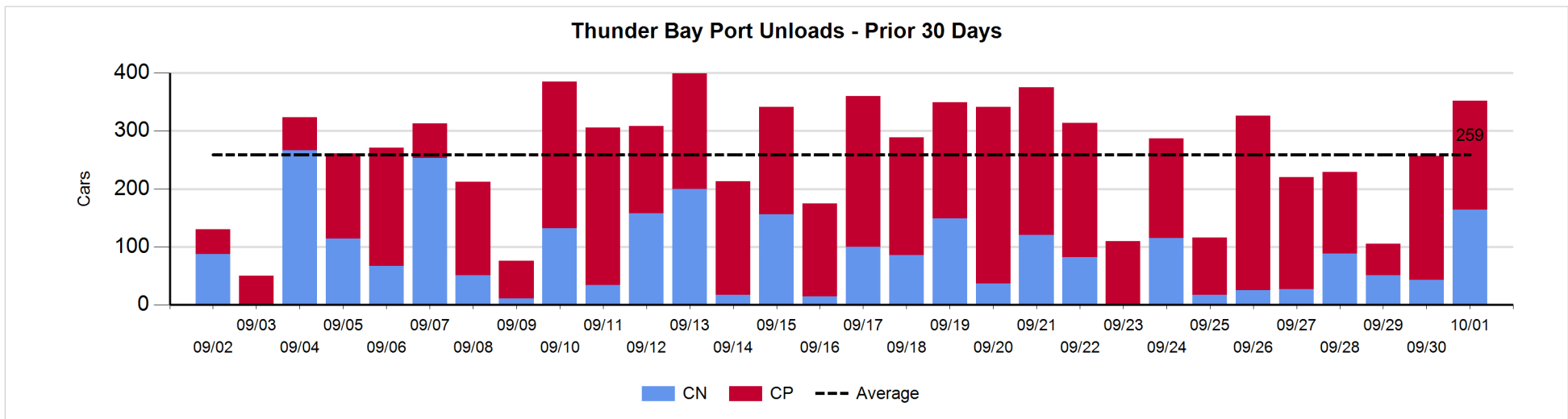
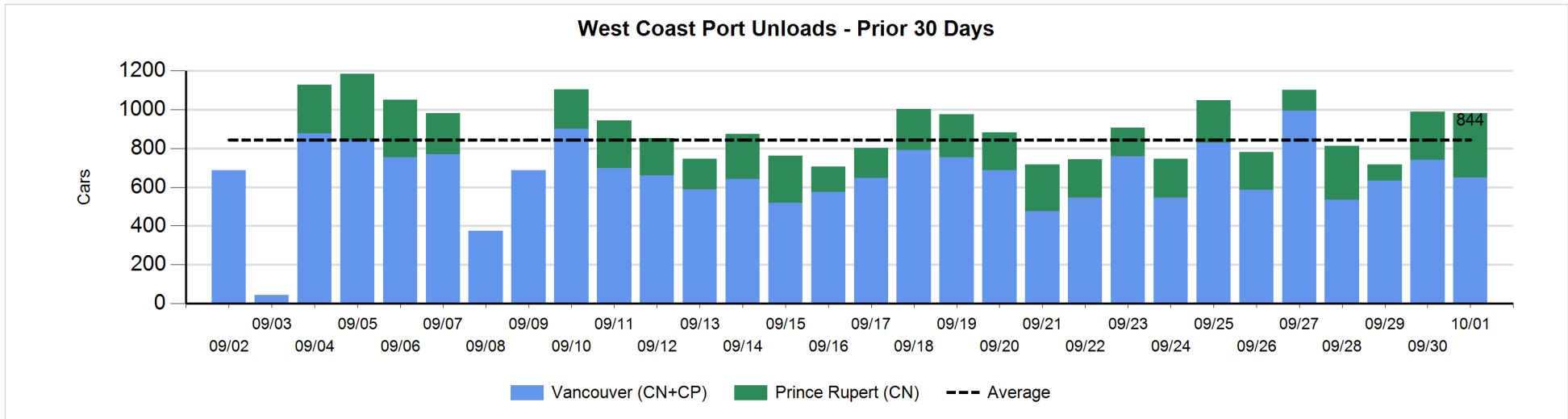
Change in Loads Not Moving 48 Hours or More - 10/1/2018

	E Canada	Prince Rupert	Thunder Bay	USA/MEX	Vancouver	Total
CN						
Origin	4	-103		-15	214	100
Enroute	-22	0	0	6	-205	-221
Destination	-10	-1	-9	-3	-18	-41
	-28	-104	-9	-12	-9	-162
CP						
Origin	7		99	-1	-49	56
Enroute	1		-83	2	12	-68
Destination			215		-167	48
	8		231	1	-204	36
US Rail / Short Line						
Origin						
Enroute	0			2		2
Destination	-10			-16	-1	-27
	-10			-14	-1	-25



Port Unloads - 10/1/2018

	Prince Rupert	Vancouver	West Coast Total	Thunder Bay	Total
CN	331	250	581	164	745
CP		399	399	188	587
	331	649	980	352	1,332



Port Terminal Status

Vancouver

Daily Activity for 10/1/2018

	Cars Arrived	Cars Received in Interchange	Cars Delivered in Interchange	Cars Placed for Unloading	Loads on Wheels at Destination As of 10/1/2018
CN	119	111	111	209	512
CP	601	111	112	444	852
SRY		1		3	31

Port Unloads

	10/01	09/30	Week To Date	Last Week
CN	250	315	250	2,284
CP	399	426	399	2,581
SRY	10		10	37

Age Profile of Loaded Cars Waiting Placement for Unloading

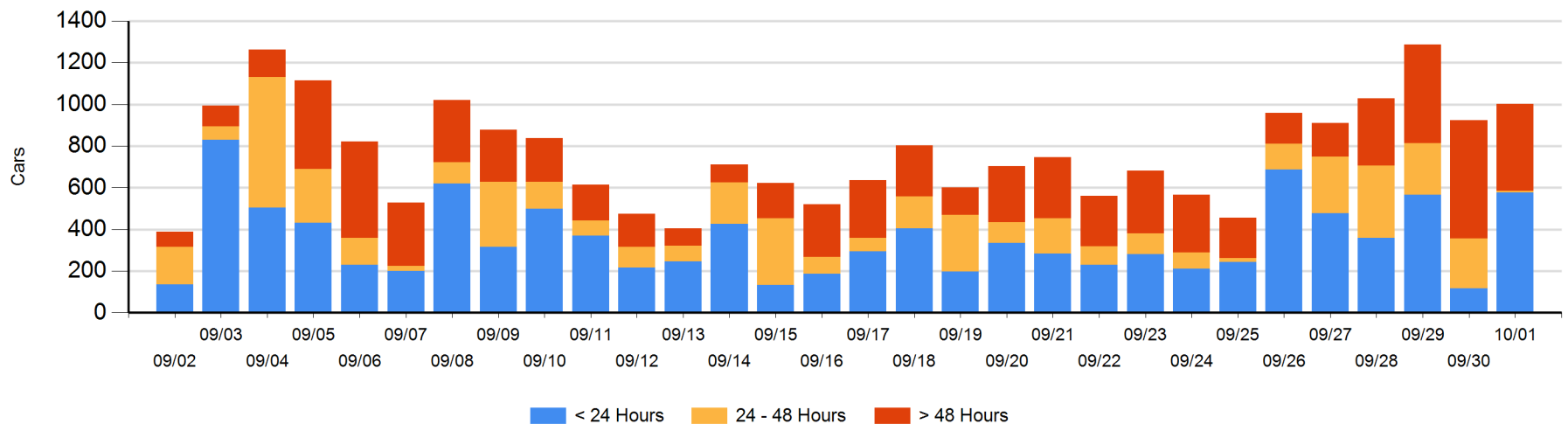
Today

	< 24 Hrs	24 - 48 Hrs	> 48-72 Hrs	> 72 Hrs	Total On Hand
CN	51	1	64	206	322
CP	525	7	51	98	681
SRY					0

Change in Last 24 Hours

	< 24 Hrs	24-48 Hrs	48 - 72 Hrs	> 72 Hrs
CN	50	-63	-46	-9
CP	410	-168	-74	-20
SRY				

Loaded Cars on Hand Vancouver Waiting for Placement - Last 30 Days All Railways



Port Terminal Status

Prince Rupert

Daily Activity for 10/1/2018

	Cars Arrived	Cars Received in Interchange	Cars Delivered in Interchange	Cars Placed for Unloading	Loads on Wheels at Destination As of 10/1/2018
CN	136			217	31

Port Unloads

	10/01	09/30	Week To Date	Last Week
CN	331	248	331	1,327

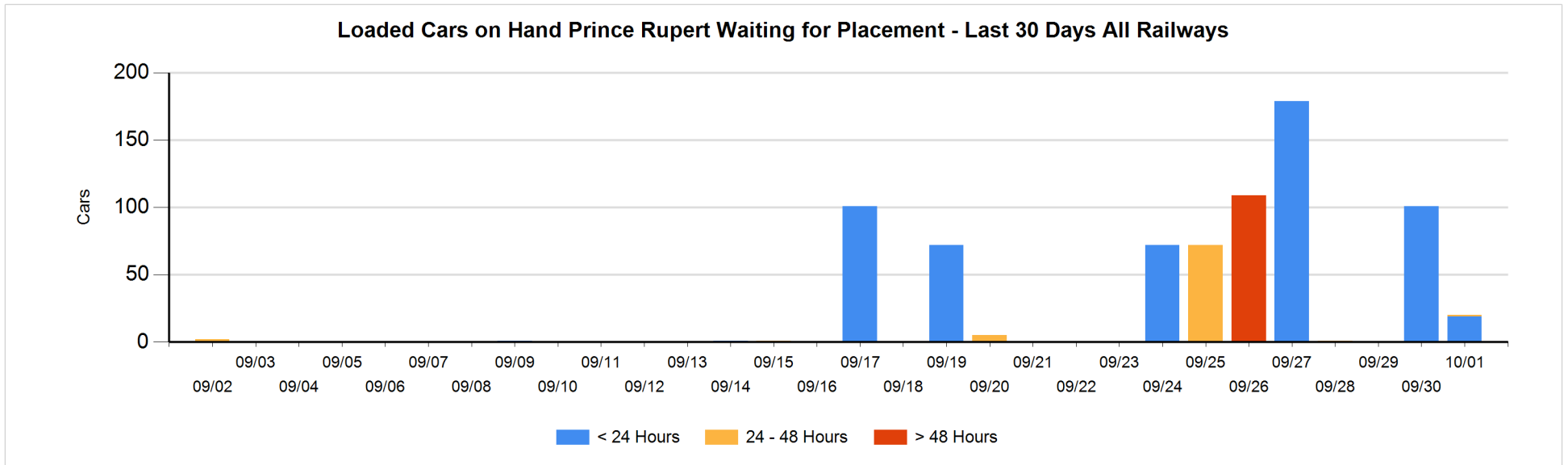
Age Profile of Loaded Cars Waiting Placement for Unloading

Today

	< 24 Hrs	24 - 48 Hrs	> 48-72 Hrs	> 72 Hrs	Total On Hand
CN	19	1			20

Change in Last 24 Hours

	< 24 Hrs	24-48 Hrs	48 - 72 Hrs	> 72 Hrs
CN	-82	1		



Port Terminal Status

Thunder Bay

Daily Activity for 10/1/2018

	Cars Arrived	Cars Received in Interchange	Cars Delivered in Interchange	Cars Placed for Unloading	Loads on Wheels at Destination As of 10/1/2018
CN	104			131	418
CP	216			139	590

Port Unloads

	10/01	09/30	Week To Date	Last Week
CN	164	43	164	366
CP	188	214	188	1,174

Age Profile of Loaded Cars Waiting Placement for Unloading

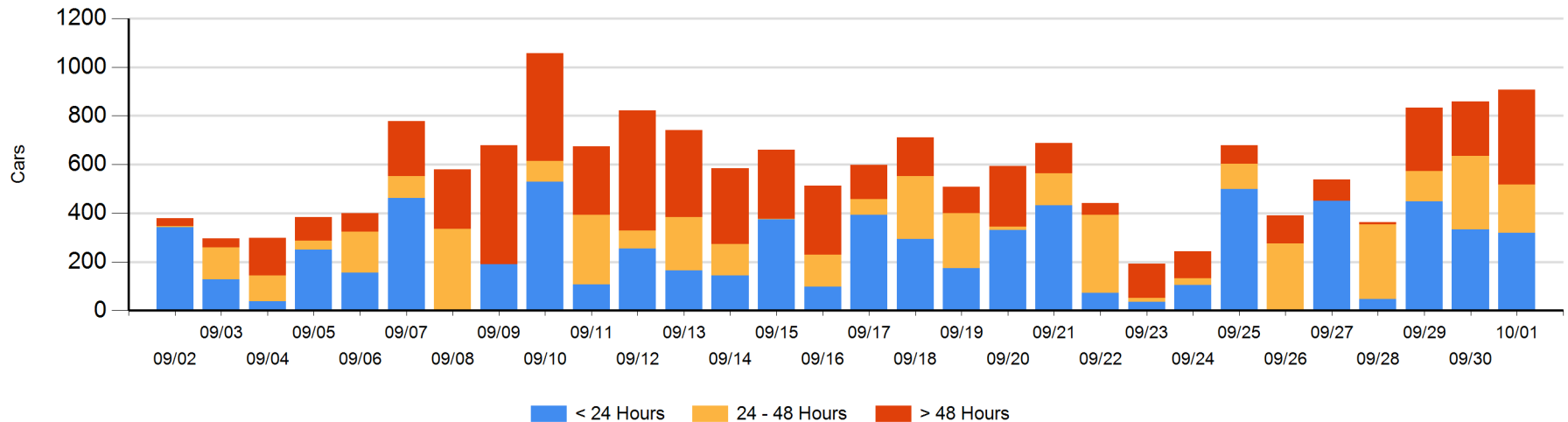
Today

	< 24 Hrs	24 - 48 Hrs	> 48-72 Hrs	> 72 Hrs	Total On Hand
CN	104	175	4	12	295
CP	216	22	257	118	613

Change in Last 24 Hours

	< 24 Hrs	24-48 Hrs	48 - 72 Hrs	> 72 Hrs
CN	-202	171	4	0
CP	188	-276	140	25

Loaded Cars on Hand Thunder Bay Waiting for Placement - Last 30 Days All Railways



Measurement Definitions

Loads on Wheels	<p>Count of loaded rail cars including all rail cars that have been released loaded at origin and have not been reported by the railway as unloaded at destination.</p> <p>Counts include all rail cars (hopper cars and boxcars) moving within a pipeline.</p>
Loads Not Moving	<p>Loaded rail cars for which the railways have not reported a movement event for 48 hours or more whether the rail car is at origin, enroute or at destination.</p>
Port Unloads	<p>Count of rail cars reported by railways as unloaded at the western port destinations of Vancouver, Prince Rupert and Thunder Bay.</p> <p>Unload counts include all rail cars (hopper cars and boxcars) unloaded by all receivers including major port terminals, transloaders and other receivers.</p>
Cars Arrived	<p>Count of rail cars reported as arrived at the destination railway terminal.</p>
Cars Received in Interchange	<p>Count of rail cars received in interchange by each railway within a destination railway terminal. Interchange activity is tracked for the Vancouver and Thunder Bay pipelines as applicable.</p>
Cars Delivered in Interchange	<p>Count of rail cars delivered in interchange by each railway within a destination railway terminal. Interchange activity is tracked for the Vancouver and Thunder Bay pipelines as applicable.</p>
Cars Placed for Unloading	<p>Count of rail cars reported by the railways as placed loaded at the receiver's facility for unloading.</p>
Loads on Wheels at Destination	<p>Count of rail cars that remain under load within the destination railway terminal including rail cars that have been reported as placed for unloading but not yet reported as unloaded.</p>
Waiting Placement for Unloading	<p>Count of rail cars that have been reported as arrived at the destination railway terminal but not reported as placed for unloading by the railway.</p> <p>For the Ports of Vancouver, Prince Rupert and Thunder Bay the count of rail cars waiting placement for unloading is categorized by age – i.e. the elapsed time from arrival at destination to the current report date.</p>