

SPEED READ

- Loads on wheels decreased overnight, reflecting lower CP volumes offset by a rise in CN volumes. On a net basis, volumes fell due to reduced traffic across all corridors other than USA/MEX.
- Network fluidity improved overnight, led by a decline in idle car counts on both CN and CP by 13% (-145) and 38% (-746), respectively. The total count of cars for 4+ days on both railways increased 2% (+27) overnight and have now increased for three consecutive days - presently at 1,255 cars, the highest seen in the last 30 days.
- Two days in Week 10 unloads now ahead of prior week's performance by nearly 350 unloads, marking an improvement in week over week performance at Thunder Bay and Prince Rupert offset by lower unloads at Vancouver.

Loads on Wheels

- Loads on wheels fell 5% (-615) overnight, due to higher traffic on CN offset by reduced volumes on CP - combined total at 10,692 and 9% above the trailing 30-day average.
- On a net basis, the decline in loads on wheels indicates reduced volumes across all corridors other than USA/MEX.
- CN volumes increased marginally by 1% (+59) overnight, with higher volumes in the Vancouver and USA/MEX corridors offset by reduced traffic levels in the Thunder Bay, Prince Rupert and E. Canada corridors. System wide CN loads on wheels now at 5,279 and 12% above the trailing 30-day average.
- CP volumes fell significantly by 11% (-623) overnight, driven by a decline in traffic levels across all corridors other than E. Canada. CP system wide loads on wheels currently at 5,224 and 9% above the trailing 30-day average.
- Vancouver presently at 6,037, decreased 2% (-110) overnight, now 15% above the trailing 30-day average.
- The Prince Rupert pipeline now at 1,770, fell 6% (-113) overnight and 27% above the trailing 30-day average.
- Thunder Bay volumes declined significantly by 17% (-362) overnight - now at 1,784 and 2% above the trailing 30-day average, with 76% of traffic moving on CP.

Hopper Car Rationing

- No hopper car rationing was reported for either CN or CP in week 9.

Loads Not Moving

- **The count of cars not moving for 48+ hours decreased 29% (-891) overnight, marking reduced counts on both CN and CP. Idle car counts currently at 2,143 and 25% above the trailing 30-day average.**
- CN
 - **The count of idle cars for 48+ hours decreased 13% (-145) overnight - now at 950 cars.**
 - The number of cars idle for 4+ days decreased 15% (-98) overnight - presently at 571 cars.
 - The count of cars not moving for 7+ days fell 5% (-3) overnight - now at 52 cars.
 - Vancouver represents 58% of all idle cars.
 - In total 33% of all idle cars are dwelling at origin locations.
- CP
 - **CP idle car counts for 48+ hours decreased 38% (-746) overnight - now at 1,193 cars.**
 - The number of cars idle for 4+ days rose 22% (+125) overnight and have now increased for the third consecutive day - presently at 684 cars, the highest seen in the last 30 days.

- The number of cars idle for 7+ days increased 16% (+25) overnight - now at 178 cars.
- Vancouver accounts for 43% of all idle cars.
- In total 47% of all idle cars are dwelling at origin locations.

Port Performance

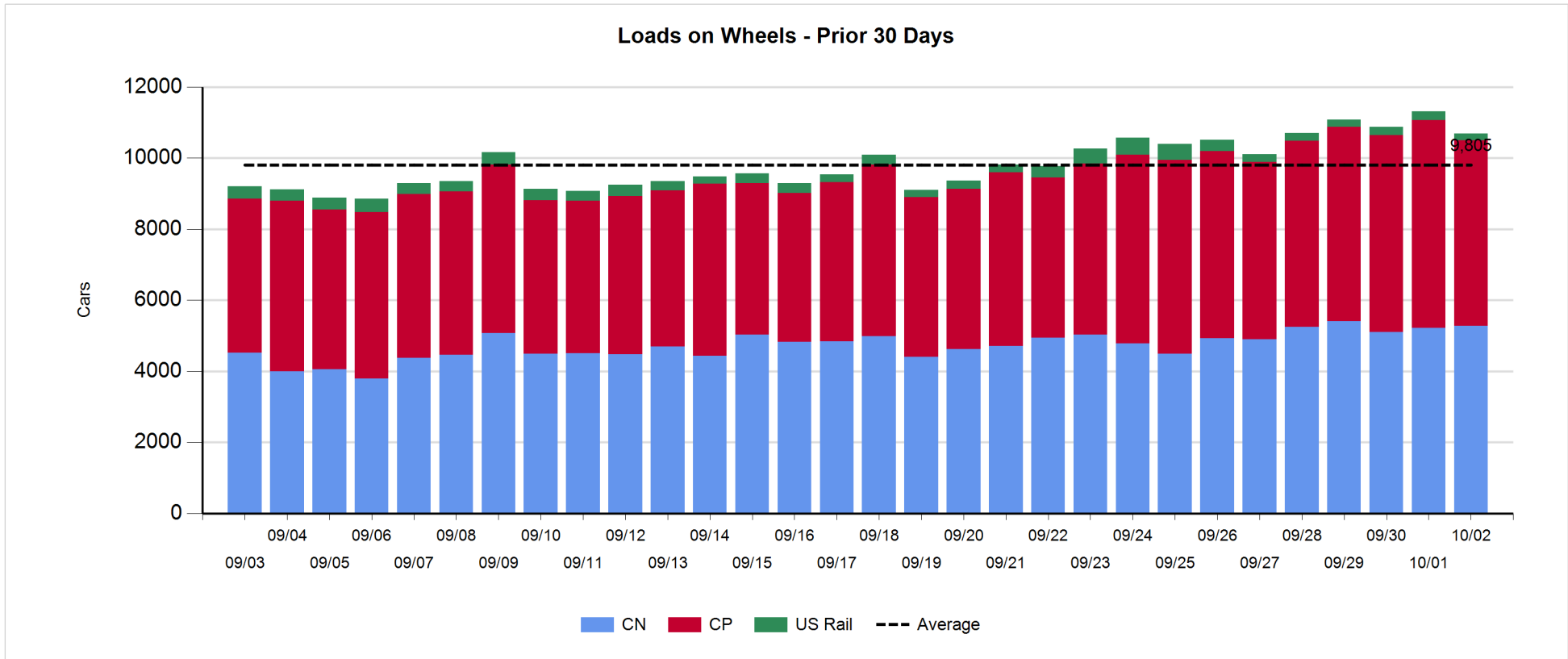
- CN and CP reported a total of 1,187 cars unloaded at the three major ports, now 6% above the trailing 30-day average. Two days in Week 10 unloads are tracking ahead of last week's pace by about 350 unloads, marking higher unloads at Thunder Bay and Prince Rupert offset by lower unloads at Vancouver.
- Vancouver
 - 675 unloads reported by CN and CP at the Port of Vancouver; CN - 270 and CP - 405. Two days in Week 10 unloads are tracking behind last week's performance by nearly 50 unloads.
 - There are about 1,300 cars on site at Vancouver with more than 550 cars arriving at the port in the last 24 hours.
 - CN and CP have around 750 cars in British Columbia en route to Vancouver, with 150 cars at Kamloops and west, and 66% of traffic moving on CP.
- Prince Rupert
 - Prince Rupert reported 133 unloads, now ahead of last week's unloads after two days by 50 unloads.
 - Loads on wheels now above 1,000 cars - now at 1,770 cars.
 - There are more than 600 cars west of Jasper en route to Prince Rupert.
 - There are 100 cars on site at Prince Rupert with 200 cars arriving at the port in the last 24 hours. Given the structure of the pipeline, there appears to be sufficient cars available to support unloads in the next few days.
- Thunder Bay
 - 379 unloads were reported at Thunder Bay yesterday. Two days in Week 10 unloads are tracking ahead of last week's pace by more than 300 unloads.
 - There are more than 700 cars on site at Thunder Bay with 100 cars arriving at the port in the prior 24 hours.
 - There are around 450 cars en route to Thunder Bay from Winnipeg and east. Cars on hand and those en route should support unloads in the next few days.

Daily Loads on Wheels - 10/2/2018

	E Canada	Prince Rupert	Thunder Bay	USA/MEX	Vancouver	Total
CN	104	1,770	430	222	2,753	5,279
CP	141		1,354	469	3,260	5,224
Short Line	19				24	43
US Rail				146		146
	264	1,770	1,784	837	6,037	10,692

Change in Loads on Wheels - Prior 24 Hours

	E Canada	Prince Rupert	Thunder Bay	USA/MEX	Vancouver	Total
CN	-17	-113	-134	43	280	59
CP	0		-228	-12	-383	-623
Short Line	-13				-7	-20
US Rail				-31		-31
	-30	-113	-362	0	-110	-615

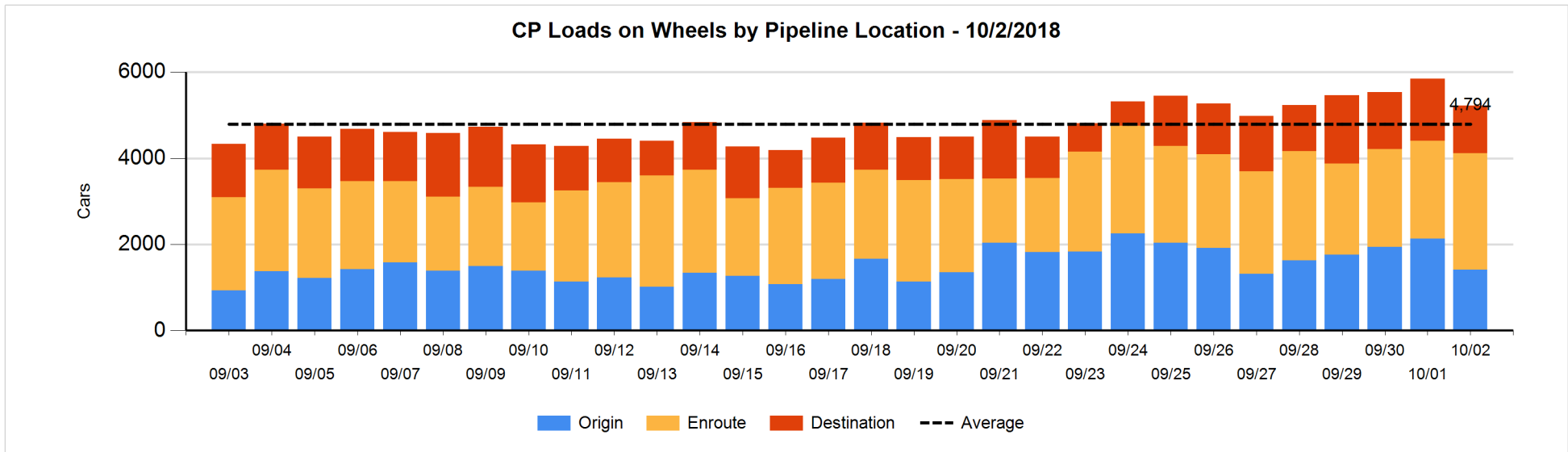
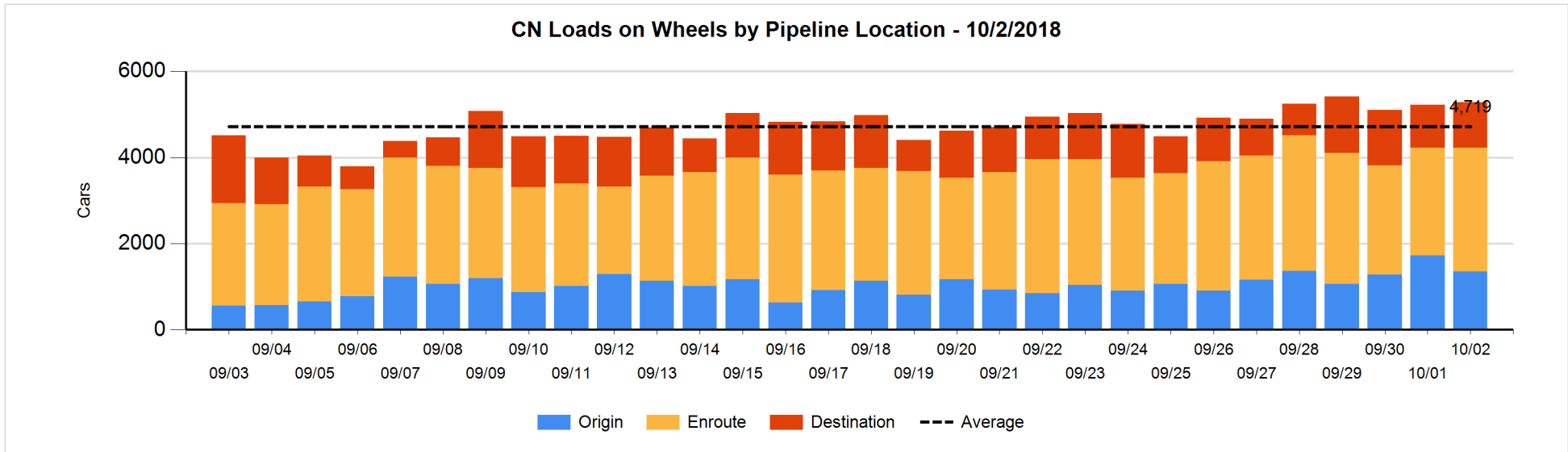


Daily Loads on Wheels By Pipeline Location - 10/2/2018

	E Canada	Prince Rupert	Thunder Bay	USA/MEX	Vancouver	Total
CN						
Origin	1	562	98	45	651	1,357
Enroute	93	1,111	1	159	1,506	2,870
Destination	10	97	331	18	596	1,052
	104	1,770	430	222	2,753	5,279
CP						
Origin	26		262	187	931	1,406
Enroute	60		698	282	1,664	2,704
Destination	55		394		665	1,114
	141		1,354	469	3,260	5,224
US Rail / Short Line						
Origin						
Enroute	12			100		112
Destination	7			46	24	77
	19			146	24	189

Change in Daily Loads on Wheels By Pipeline Location - Prior 24 Hours

	E Canada	Prince Rupert	Thunder Bay	USA/MEX	Vancouver	Total
CN						
Origin	-9	-367	0	41	-27	-362
Enroute	-7	188	-47	3	223	360
Destination	-1	66	-87	-1	84	61
	-17	-113	-134	43	280	59
CP						
Origin	2		-202	1	-529	-728
Enroute	-57		171	-13	333	434
Destination	55		-197		-187	-329
	0		-228	-12	-383	-623
US Rail / Short Line						
Origin						
Enroute	1			-18		-17
Destination	-14			-13	-7	-34
	-13			-31	-7	-51

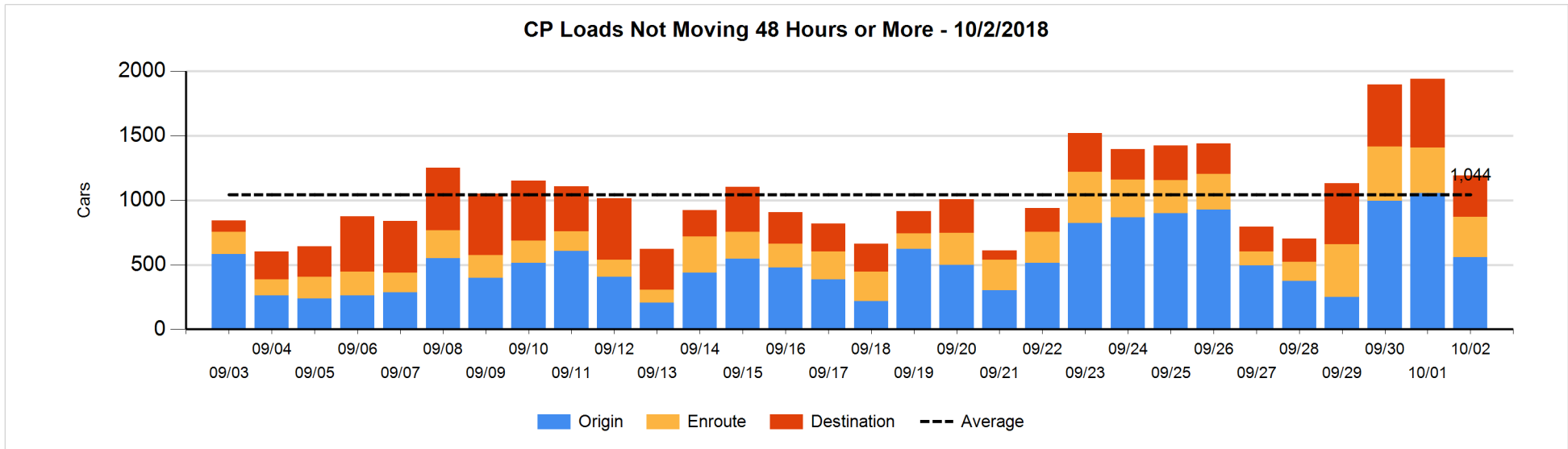
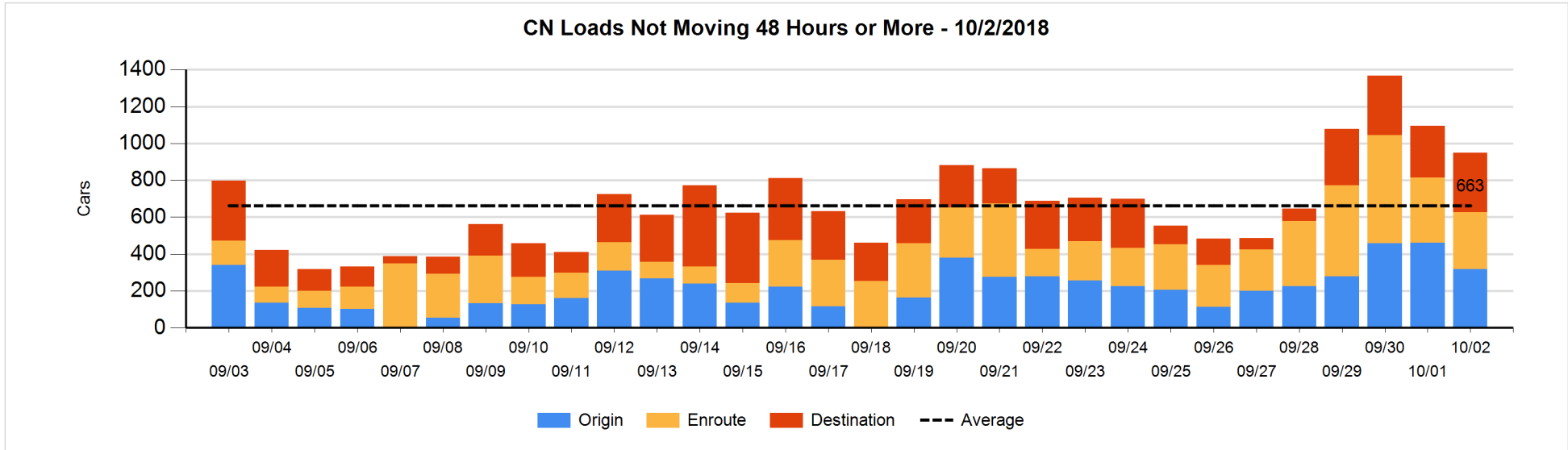


Loads Not Moving 48 Hours or More - 10/2/2018

	E Canada	Prince Rupert	Thunder Bay	USA/MEX	Vancouver	Total
CN						
Origin	1	199			118	318
Enroute	54	63	1	46	146	310
Destination	9	1	15	13	284	322
	64	263	16	59	548	950
CP						
Origin	23		246	41	248	558
Enroute	3		27	136	147	313
Destination			208		114	322
	26		481	177	509	1193
US Rail / Short Line						
Origin						
Enroute	9			21		30
Destination				14	14	28
	9			35	14	58

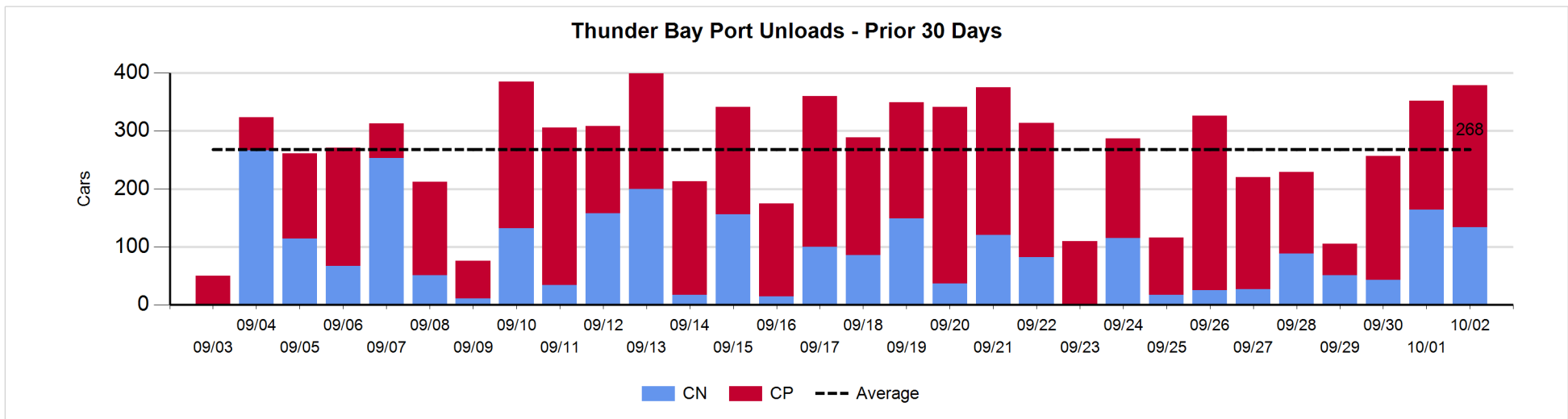
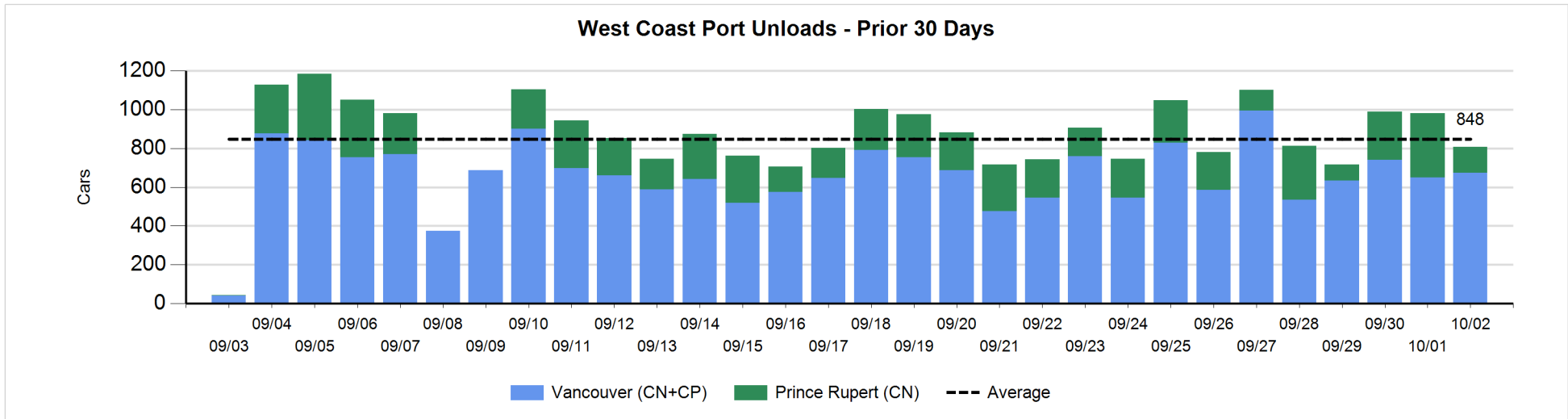
Change in Loads Not Moving 48 Hours or More - 10/2/2018

	E Canada	Prince Rupert	Thunder Bay	USA/MEX	Vancouver	Total
CN						
Origin	-9	94			-228	-143
Enroute	4	35	0	1	-84	-44
Destination	0	0	9	-2	35	42
	-5	129	9	-1	-277	-145
CP						
Origin	0		-48	-3	-448	-499
Enroute	-1		-17	-17	-5	-40
Destination			-101		-106	-207
	-1		-166	-20	-559	-746
US Rail / Short Line						
Origin						
Enroute	0			2		2
Destination				-13	-6	-19
	0			-11	-6	-17



Port Unloads - 10/2/2018

	Prince Rupert	Vancouver	West Coast Total	Thunder Bay	Total
CN	133	270	403	134	537
CP		405	405	245	650
	133	675	808	379	1,187



Port Terminal Status

Vancouver

Daily Activity for 10/2/2018

	Cars Arrived	Cars Received in Interchange	Cars Delivered in Interchange	Cars Placed for Unloading	Loads on Wheels at Destination As of 10/2/2018
CN	247	244		358	596
CP	326		245	411	665
SRY		1		6	24

Port Unloads

	10/02	10/01	Week To Date	Last Week
CN	270	250	520	2,284
CP	405	400	805	2,581
SRY	8	10	18	37

Age Profile of Loaded Cars Waiting Placement for Unloading

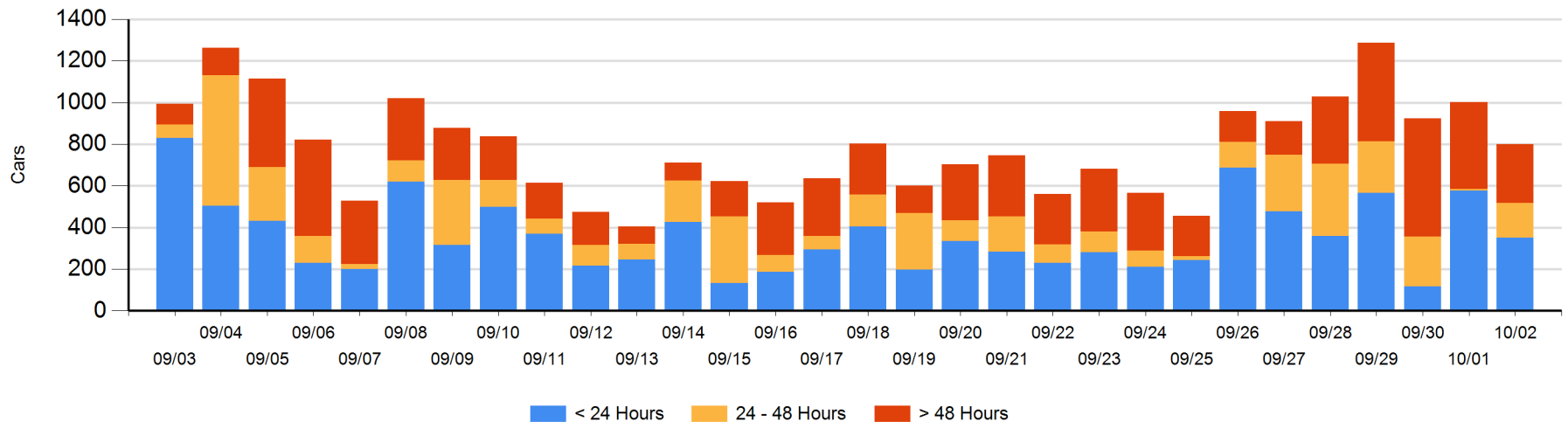
Today

	< 24 Hrs	24 - 48 Hrs	> 48-72 Hrs	> 72 Hrs	Total On Hand
CN	32	21	1	227	281
CP	320	146	1	52	519
SRY					0

Change in Last 24 Hours

	< 24 Hrs	24-48 Hrs	48 - 72 Hrs	> 72 Hrs
CN	-19	20	-63	21
CP	-205	139	-50	-46
SRY				

Loaded Cars on Hand Vancouver Waiting for Placement - Last 30 Days All Railways



Port Terminal Status

Prince Rupert

Daily Activity for 10/2/2018

	Cars Arrived	Cars Received in Interchange	Cars Delivered in Interchange	Cars Placed for Unloading	Loads on Wheels at Destination As of 10/2/2018
CN	200			199	97

Port Unloads

	10/02	10/01	Week To Date	Last Week
CN	133	331	464	1,327

Age Profile of Loaded Cars Waiting Placement for Unloading

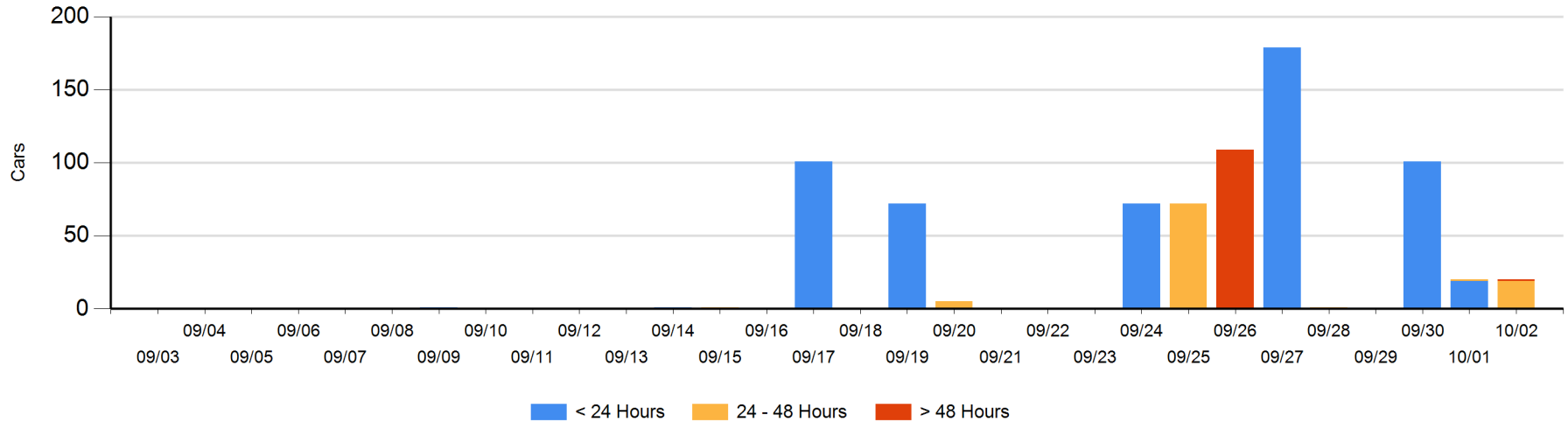
Today

	< 24 Hrs	24 - 48 Hrs	> 48-72 Hrs	> 72 Hrs	Total On Hand
CN		19	1		20

Change in Last 24 Hours

	< 24 Hrs	24-48 Hrs	48 - 72 Hrs	> 72 Hrs
CN	-19	18	1	

Loaded Cars on Hand Prince Rupert Waiting for Placement - Last 30 Days All Railways



Port Terminal Status

Thunder Bay

Daily Activity for 10/2/2018

	Cars Arrived	Cars Received in Interchange	Cars Delivered in Interchange	Cars Placed for Unloading	Loads on Wheels at Destination As of 10/2/2018
CN	47			138	331
CP	48			214	394

Port Unloads

	10/02	10/01	Week To Date	Last Week
CN	134	164	298	366
CP	245	188	433	1,174

Age Profile of Loaded Cars Waiting Placement for Unloading

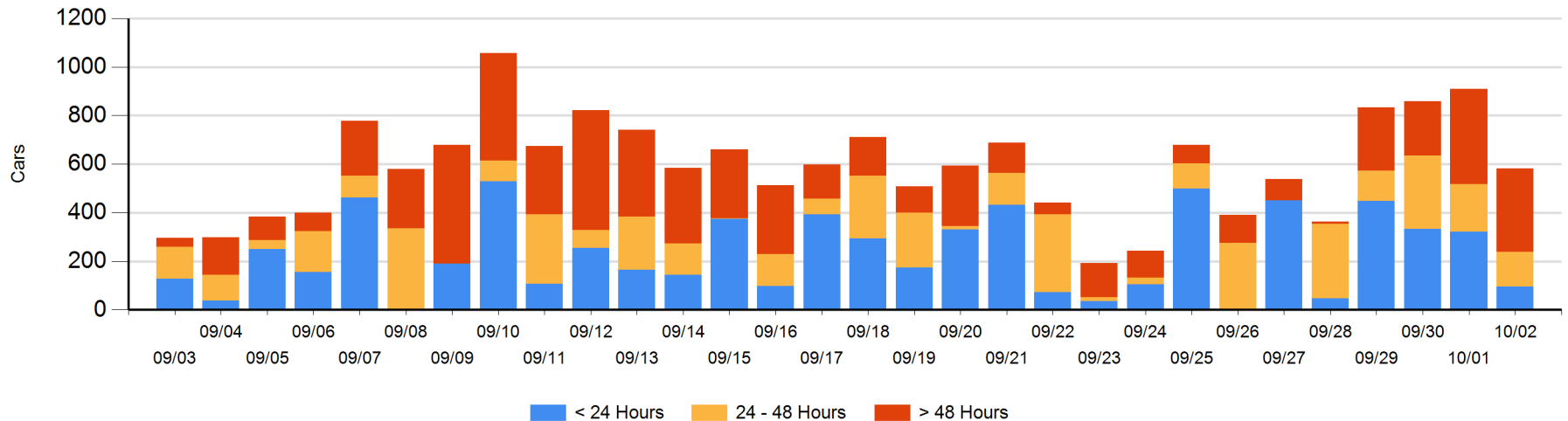
Today

	< 24 Hrs	24 - 48 Hrs	> 48-72 Hrs	> 72 Hrs	Total On Hand
CN	47	25	116	16	204
CP	48	119	12	198	377

Change in Last 24 Hours

	< 24 Hrs	24-48 Hrs	48 - 72 Hrs	> 72 Hrs
CN	-57	-150	112	4
CP	-169	97	-245	80

Loaded Cars on Hand Thunder Bay Waiting for Placement - Last 30 Days All Railways



Measurement Definitions

Loads on Wheels	<p>Count of loaded rail cars including all rail cars that have been released loaded at origin and have not been reported by the railway as unloaded at destination.</p> <p>Counts include all rail cars (hopper cars and boxcars) moving within a pipeline.</p>
Loads Not Moving	<p>Loaded rail cars for which the railways have not reported a movement event for 48 hours or more whether the rail car is at origin, enroute or at destination.</p>
Port Unloads	<p>Count of rail cars reported by railways as unloaded at the western port destinations of Vancouver, Prince Rupert and Thunder Bay.</p> <p>Unload counts include all rail cars (hopper cars and boxcars) unloaded by all receivers including major port terminals, transloaders and other receivers.</p>
Cars Arrived	<p>Count of rail cars reported as arrived at the destination railway terminal.</p>
Cars Received in Interchange	<p>Count of rail cars received in interchange by each railway within a destination railway terminal. Interchange activity is tracked for the Vancouver and Thunder Bay pipelines as applicable.</p>
Cars Delivered in Interchange	<p>Count of rail cars delivered in interchange by each railway within a destination railway terminal. Interchange activity is tracked for the Vancouver and Thunder Bay pipelines as applicable.</p>
Cars Placed for Unloading	<p>Count of rail cars reported by the railways as placed loaded at the receiver's facility for unloading.</p>
Loads on Wheels at Destination	<p>Count of rail cars that remain under load within the destination railway terminal including rail cars that have been reported as placed for unloading but not yet reported as unloaded.</p>
Waiting Placement for Unloading	<p>Count of rail cars that have been reported as arrived at the destination railway terminal but not reported as placed for unloading by the railway.</p> <p>For the Ports of Vancouver, Prince Rupert and Thunder Bay the count of rail cars waiting placement for unloading is categorized by age – i.e. the elapsed time from arrival at destination to the current report date.</p>