

SPEED READ

- Loads on wheels decreased overnight, reflecting a decline in CN volumes, while CP's performance stayed unchanged. On a net basis, volumes fell due to reduced traffic in the Prince Rupert, Thunder Bay and Vancouver corridors offset by higher traffic in the USA/MEX and E. Canada corridors.
- Network fluidity improved overnight, led by a decline in idle car counts on CN by 18% (-170) offset by a rise in idle car counts on CP by 12% (+142). The total count of cars for 4+ days on both railways decreased 16% (-207) overnight - presently at 1,049 cars.
- Three days in Week 10 unloads now ahead of prior week's performance by 600 unloads, reflecting improved week over week performance across all three major ports - Vancouver, Thunder Bay and Prince Rupert.

Loads on Wheels

- Loads on wheels decreased 2% (-261) overnight, due to lower traffic on CN, while CP volumes remained unchanged - combined total at 10,482 and 6% above the trailing 30-day average.
- On a net basis, the decline in loads on wheels reflects reduced volumes in the Prince Rupert, Thunder Bay and Vancouver corridors offset by higher traffic in the USA/MEX and E. Canada corridors.
- CN volumes fell 5% (-265) overnight, with lower traffic in the Prince Rupert and Thunder Bay corridors offset by increased traffic in the E. Canada, Vancouver and USA/MEX corridors. System wide CN loads on wheels presently at 5,064 and 7% above the trailing 30-day average.
- CP volumes were unchanged (0) overnight, driven by a decline in volumes in the Thunder Bay and Vancouver corridors cancelled out by a rise in traffic levels in the USA/MEX and E. Canada corridors. CP system wide loads on wheels presently at 5,233 and 8% above the trailing 30-day average.
- Vancouver presently at 6,012, fell slightly by 1% (-36) overnight, now 14% above the trailing 30-day average.
- The Prince Rupert pipeline presently at 1,612, decreased significantly by 11% (-207) overnight and 15% above the trailing 30-day average.
- Thunder Bay volumes declined for the third consecutive day, down 9% (-169) overnight - currently at 1,615 and 8% below the trailing 30-day average, with 79% of traffic moving on CP.

Hopper Car Rationing

- CP has rationed 25 hopper car orders for week 9.

Loads Not Moving

- **The count of cars not moving for 48+ hours declined slightly by 1% (-28) overnight and have now decreased for three consecutive days, marking reduced counts on CN offset by higher counts on CP. Idle car counts presently at 2,117 and 23% above the trailing 30-day average.**
- CN
 - **The count of idle cars for 48+ hours fell 18% (-170) overnight and have now decreased for the third consecutive day - presently at 781 cars.**
 - The number of cars idle for 4+ days decreased significantly by 58% (-334) overnight - presently at 238 cars.
 - The count of cars not moving for 7+ days surged by 236% (+125) overnight - presently at 178 cars.
 - Vancouver represents 52% of all idle cars.
 - In total 54% of all idle cars are dwelling at origin locations.
- CP
 - **CP idle car counts for 48+ hours increased 12% (+142) overnight - presently at 1,336 cars.**
 - The number of cars idle for 4+ days increased for the fourth consecutive day, up 19% (+127) overnight - presently at 811 cars, the highest seen in

the last 30 days.

- The number of cars idle for 7+ days decreased slightly by 1% (-2) overnight - presently at 176 cars.
- Vancouver accounts for 55% of all idle cars.
- In total 51% of all idle cars are dwelling at origin locations.

Port Performance

- CN and CP reported a total of 1,372 cars unloaded at the three major ports, now 18% above the trailing 30-day average. Three days in Week 10 unloads are tracking ahead of last week's pace by 600 unloads, reflecting higher unloads across all three major ports - Vancouver, Thunder Bay and Prince Rupert.
- Vancouver
 - 776 unloads reported by CN and CP at the Port of Vancouver; CN - 359 and CP - 417. Three days in Week 10 unloads are tracking ahead of last week's performance by 150 unloads.
 - There are 750 cars on site at Vancouver with nearly 250 cars arriving at the port in the last 24 hours.
 - CN and CP have 1,600 cars in British Columbia en route to Vancouver, with 900 cars at Kamloops and west, and 70% of traffic moving on CP.
- Prince Rupert
 - Prince Rupert reported 275 unloads, now ahead of last week's unloads after three days by more than 100 unloads.
 - Loads on wheels now above 1,000 cars - currently at 1,612 cars.
 - There are 600 cars west of Jasper en route to Prince Rupert.
 - There are 30 cars on site at Prince Rupert with 200 cars arriving at the port in the last 24 hours. Given the structure of the pipeline, there appears to be sufficient cars available to support unloads in the next few days.
- Thunder Bay
 - 321 unloads were reported at Thunder Bay yesterday. Three days in Week 10 unloads are tracking ahead of last week's pace by more than 300 unloads.
 - There are more than 750 cars on site at Thunder Bay with more than 350 cars arriving at the port in the prior 24 hours.
 - There are 400 cars en route to Thunder Bay from Winnipeg and east. Cars on hand and those en route should support unloads for the balance of the week.

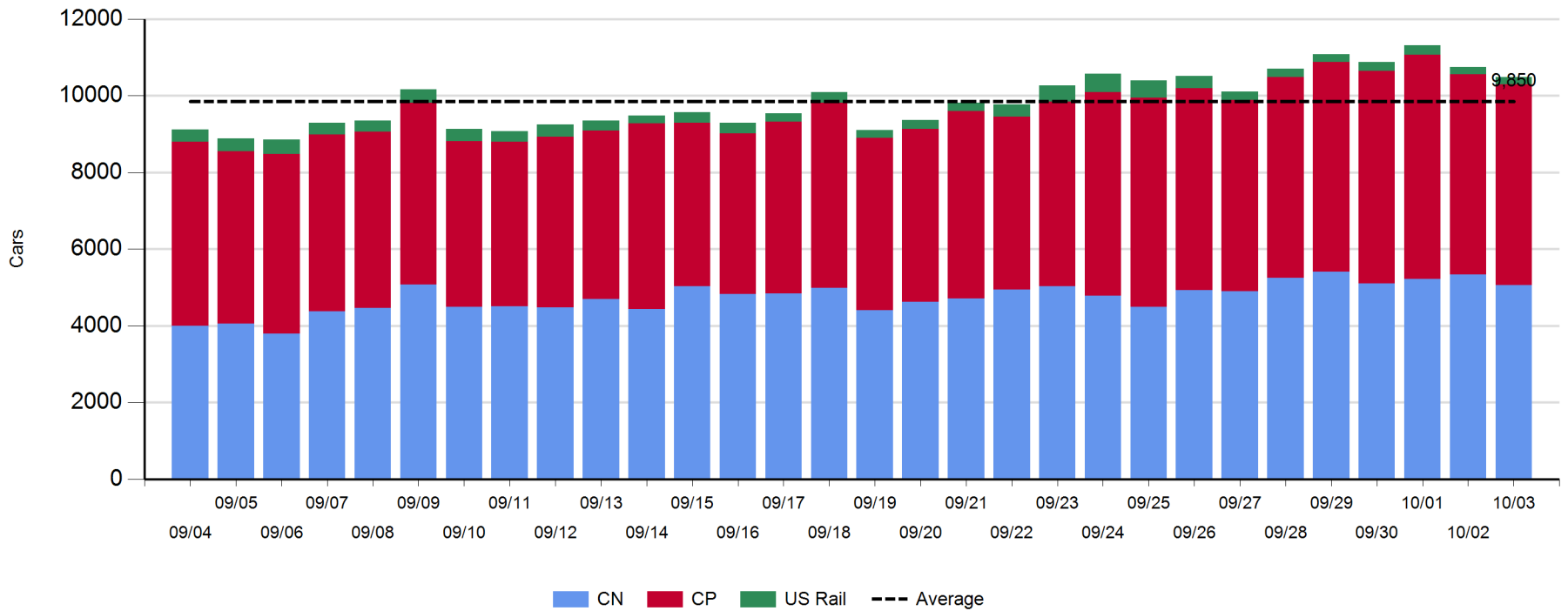
Daily Loads on Wheels - 10/3/2018

	E Canada	Prince Rupert	Thunder Bay	USA/MEX	Vancouver	Total
CN	122	1,612	340	225	2,765	5,064
CP	158		1,275	589	3,211	5,233
Short Line	12				36	48
US Rail				137		137
	292	1,612	1,615	951	6,012	10,482

Change in Loads on Wheels - Prior 24 Hours

	E Canada	Prince Rupert	Thunder Bay	USA/MEX	Vancouver	Total
CN	17	-207	-90	3	12	-265
CP	17		-79	122	-60	0
Short Line	-7				12	5
US Rail				-1		-1
	27	-207	-169	124	-36	-261

Loads on Wheels - Prior 30 Days

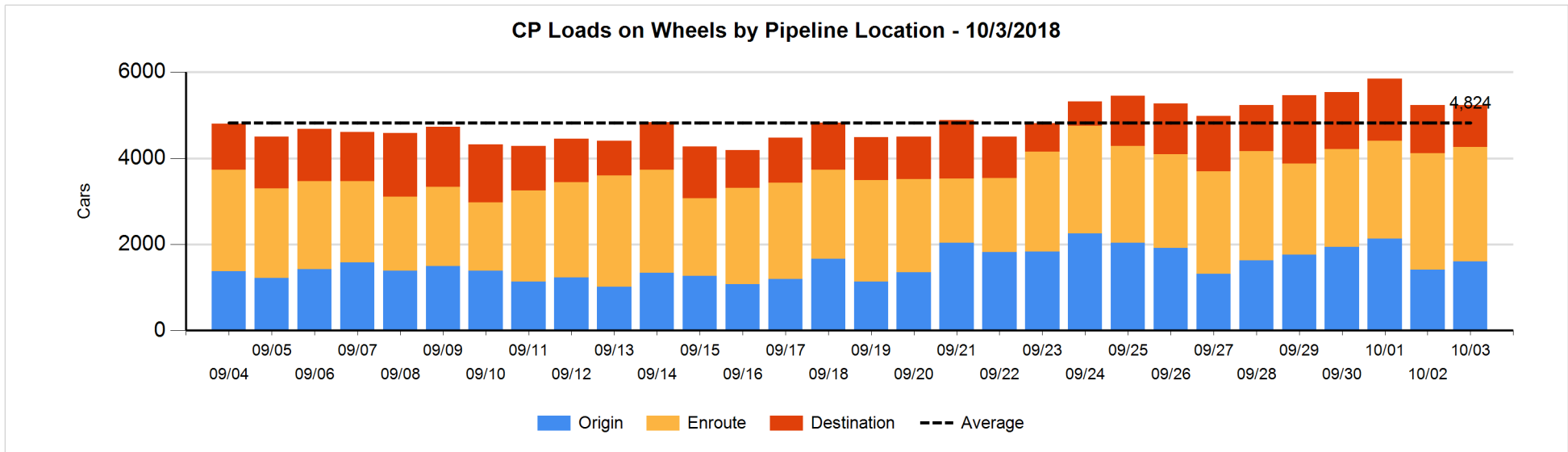
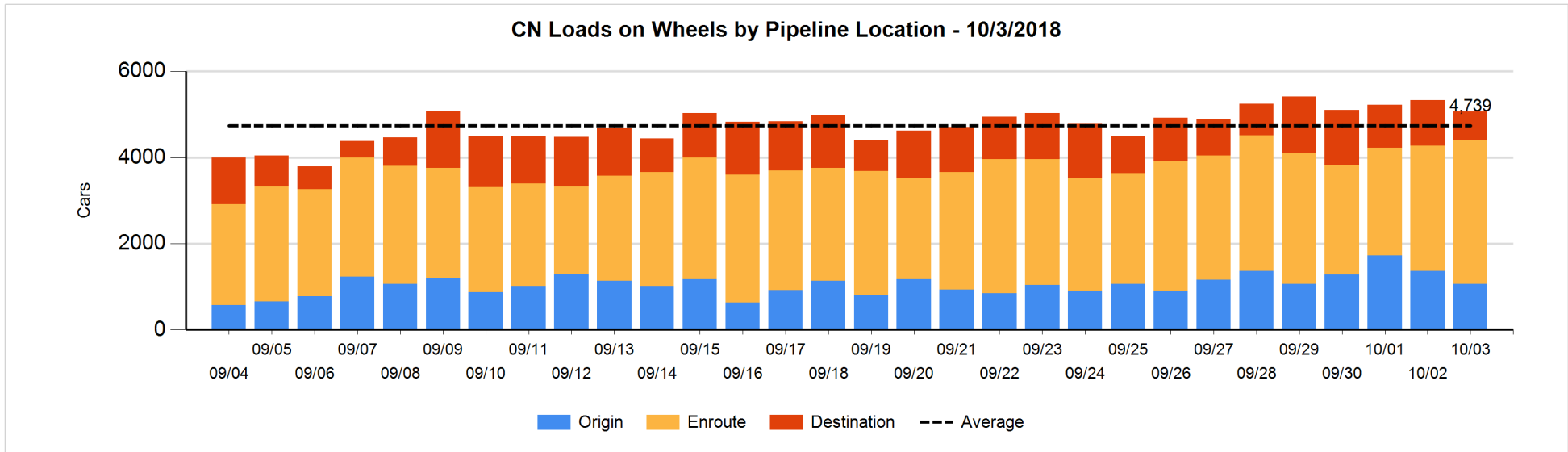


Daily Loads on Wheels By Pipeline Location - 10/3/2018

	E Canada	Prince Rupert	Thunder Bay	USA/MEX	Vancouver	Total
CN						
Origin	30	254	50	41	684	1,059
Enroute	82	1,330	149	168	1,605	3,334
Destination	10	28	141	16	476	671
	122	1,612	340	225	2,765	5,064
CP						
Origin	44		201	136	1,222	1,603
Enroute	6		441	453	1,755	2,655
Destination	108		633		234	975
	158		1,275	589	3,211	5,233
US Rail / Short Line						
Origin						
Enroute	12			68		80
Destination				69	36	105
	12			137	36	185

Change in Daily Loads on Wheels By Pipeline Location - Prior 24 Hours

	E Canada	Prince Rupert	Thunder Bay	USA/MEX	Vancouver	Total
CN						
Origin	28	-308	-48	-4	33	-299
Enroute	-11	170	148	9	99	415
Destination	0	-69	-190	-2	-120	-381
	17	-207	-90	3	12	-265
CP						
Origin	18		-61	-51	289	195
Enroute	-54		-257	173	82	-56
Destination	53		239		-431	-139
	17		-79	122	-60	0
US Rail / Short Line						
Origin						
Enroute	0			-32		-32
Destination	-7			31	12	36
	-7			-1	12	4

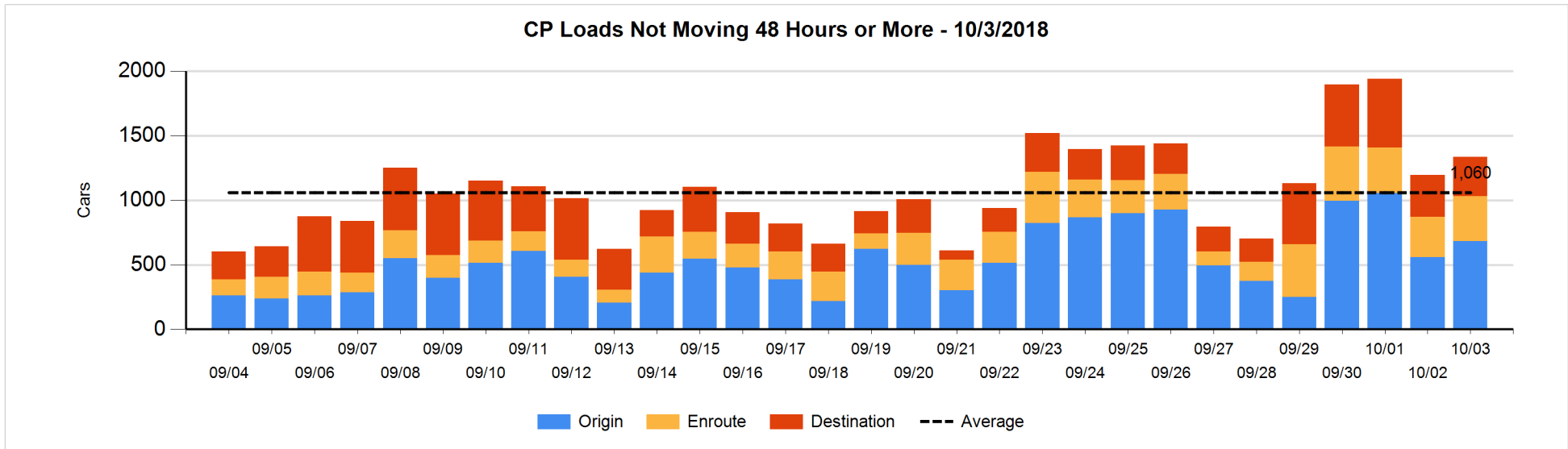
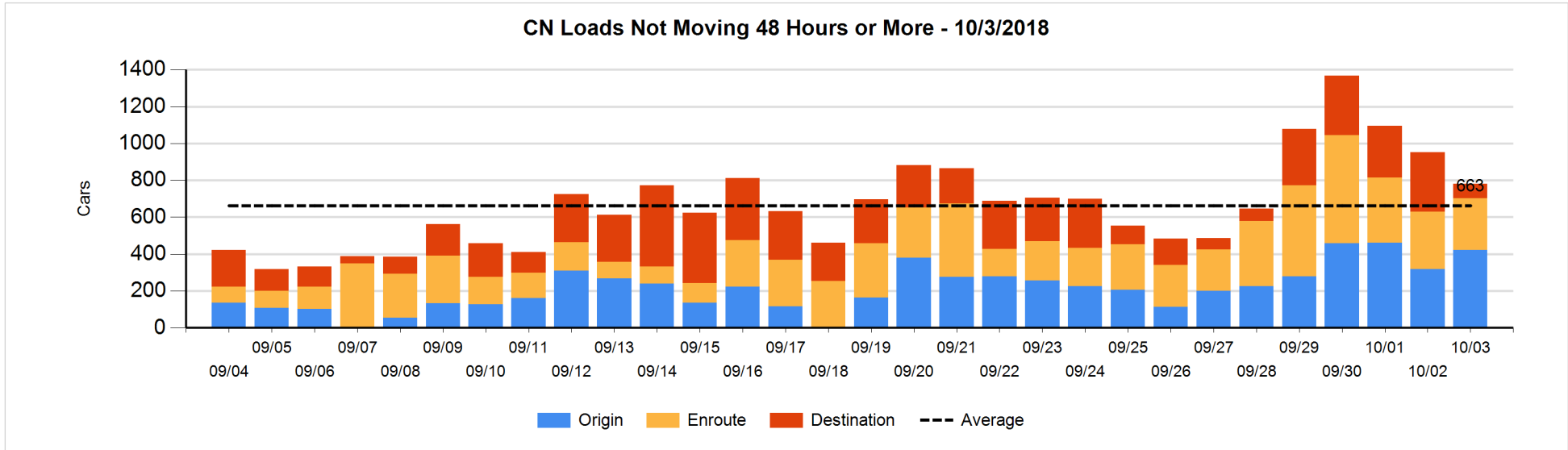


Loads Not Moving 48 Hours or More - 10/3/2018

	E Canada	Prince Rupert	Thunder Bay	USA/MEX	Vancouver	Total
CN						
Origin		207			215	422
Enroute	4	32	1	93	150	280
Destination	9	1	16	8	45	79
	13	240	17	101	410	781
CP						
Origin	24		133	20	504	681
Enroute	3		27	175	146	351
Destination			214		90	304
	27		374	195	740	1336
US Rail / Short Line						
Origin						
Enroute	2			20		22
Destination				17	19	36
	2			37	19	58

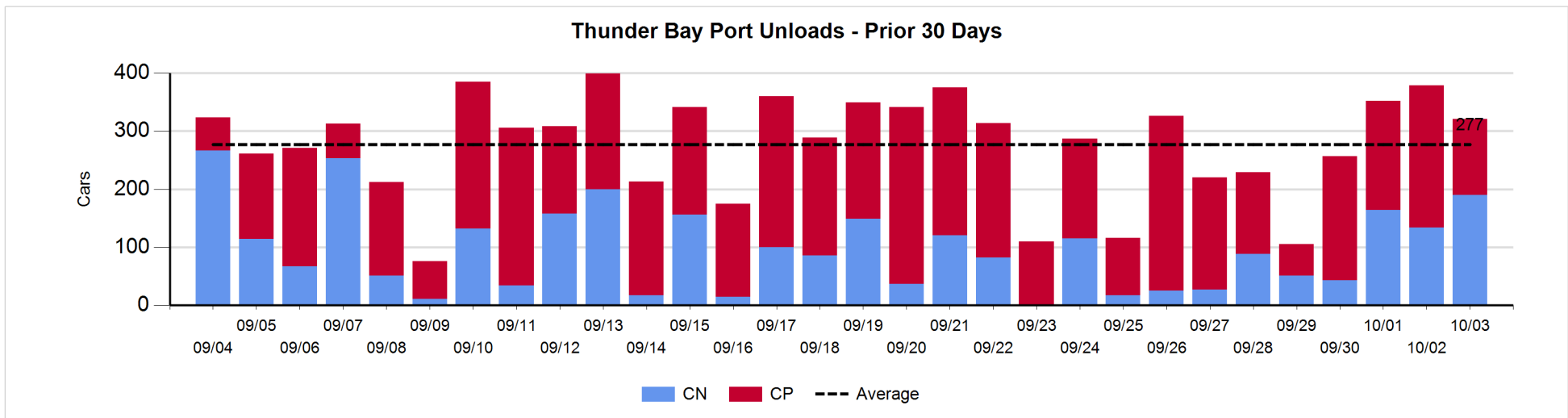
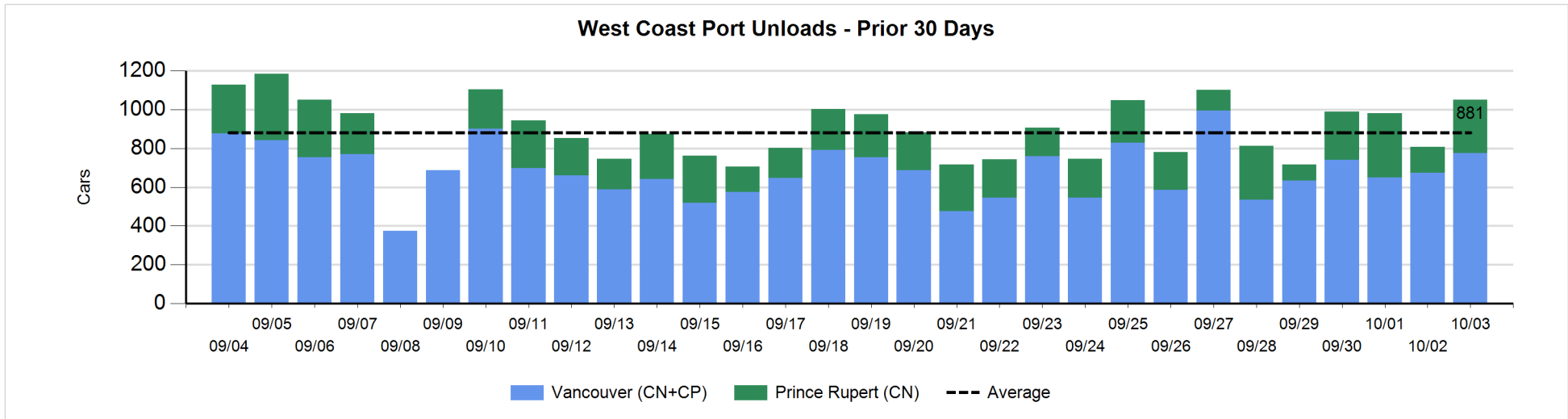
Change in Loads Not Moving 48 Hours or More - 10/3/2018

	E Canada	Prince Rupert	Thunder Bay	USA/MEX	Vancouver	Total
CN						
Origin	-2	8			97	103
Enroute	-50	-31	0	47	4	-30
Destination	0	0	1	-5	-239	-243
	-52	-23	1	42	-138	-170
CP						
Origin	1		-113	-21	256	123
Enroute	0		0	38	-1	37
Destination			6		-24	-18
	1		-107	17	231	142
US Rail / Short Line						
Origin						
Enroute	-7			-1		-8
Destination				3	5	8
	-7			2	5	0



Port Unloads - 10/3/2018

	Prince Rupert	Vancouver	West Coast Total	Thunder Bay	Total
CN	275	359	634	190	824
CP		417	417	131	548
	275	776	1,051	321	1,372



Port Terminal Status

Vancouver

Daily Activity for 10/3/2018

	Cars Arrived	Cars Received in Interchange	Cars Delivered in Interchange	Cars Placed for Unloading	Loads on Wheels at Destination As of 10/3/2018
CN	169	112	112	416	476
CP	65	99	124	262	234
SRY		25		3	36

Port Unloads

	10/03	10/02	Week To Date	Last Week
CN	359	270	879	2,284
CP	417	405	1,222	2,581
SRY	1	8	19	37

Age Profile of Loaded Cars Waiting Placement for Unloading

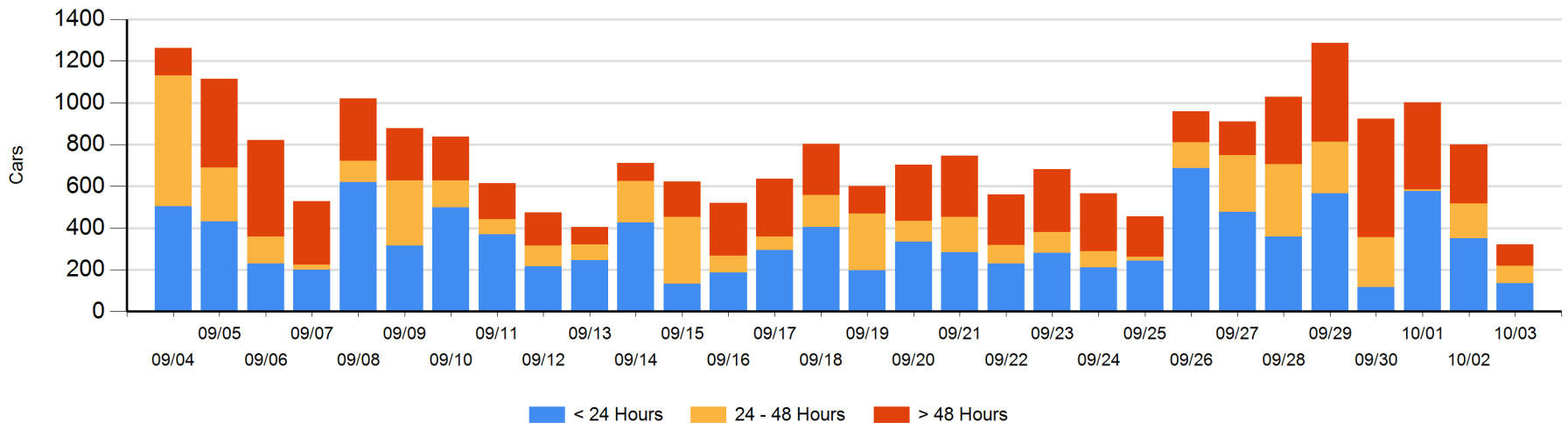
Today

	< 24 Hrs	24 - 48 Hrs	> 48-72 Hrs	> 72 Hrs	Total On Hand
CN	114	27	1	43	185
CP	21	56	22	37	136
SRY					0

Change in Last 24 Hours

	< 24 Hrs	24-48 Hrs	48 - 72 Hrs	> 72 Hrs
CN	82	6	0	-184
CP	-299	-90	21	-15
SRY				

Loaded Cars on Hand Vancouver Waiting for Placement - Last 30 Days All Railways



Port Terminal Status

Prince Rupert

Daily Activity for 10/3/2018

	Cars Arrived	Cars Received in Interchange	Cars Delivered in Interchange	Cars Placed for Unloading	Loads on Wheels at Destination As of 10/3/2018
CN		206		222	28

Port Unloads

	10/03	10/02	Week To Date	Last Week
CN	275	133	739	1,327

Age Profile of Loaded Cars Waiting Placement for Unloading

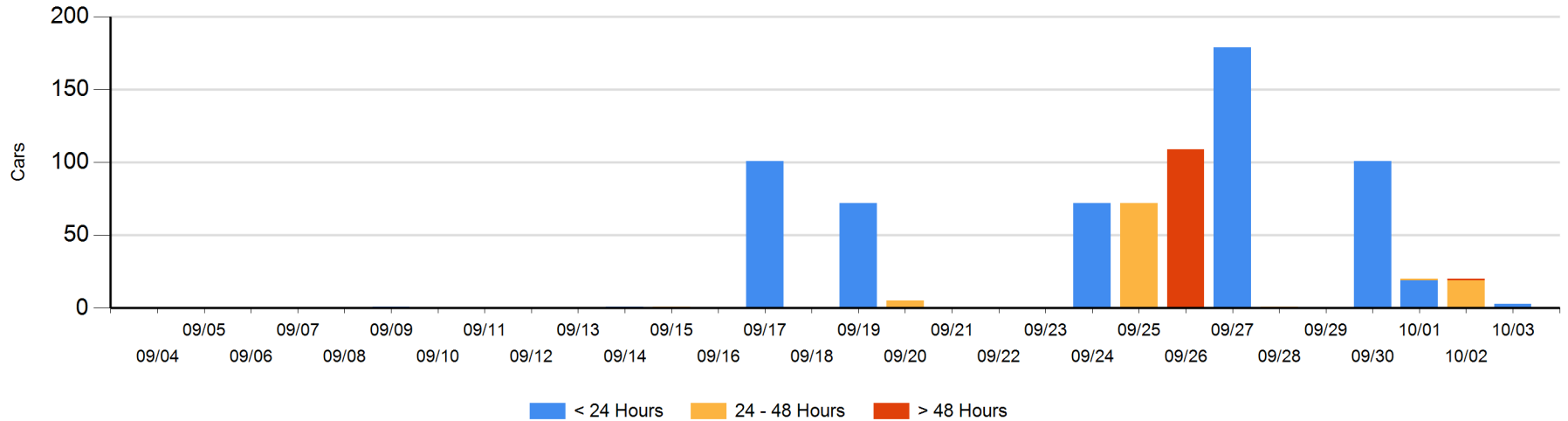
Today

	< 24 Hrs	24 - 48 Hrs	> 48-72 Hrs	> 72 Hrs	Total On Hand
CN	3				3

Change in Last 24 Hours

	< 24 Hrs	24-48 Hrs	48 - 72 Hrs	> 72 Hrs
CN	3	-19	-1	

Loaded Cars on Hand Prince Rupert Waiting for Placement - Last 30 Days All Railways



Port Terminal Status

Thunder Bay

Daily Activity for 10/3/2018

	Cars Arrived	Cars Received in Interchange	Cars Delivered in Interchange	Cars Placed for Unloading	Loads on Wheels at Destination As of 10/3/2018
CN				121	141
CP	370			114	633

Port Unloads

	10/03	10/02	Week To Date	Last Week
CN	190	134	488	366
CP	131	245	564	1,174

Age Profile of Loaded Cars Waiting Placement for Unloading

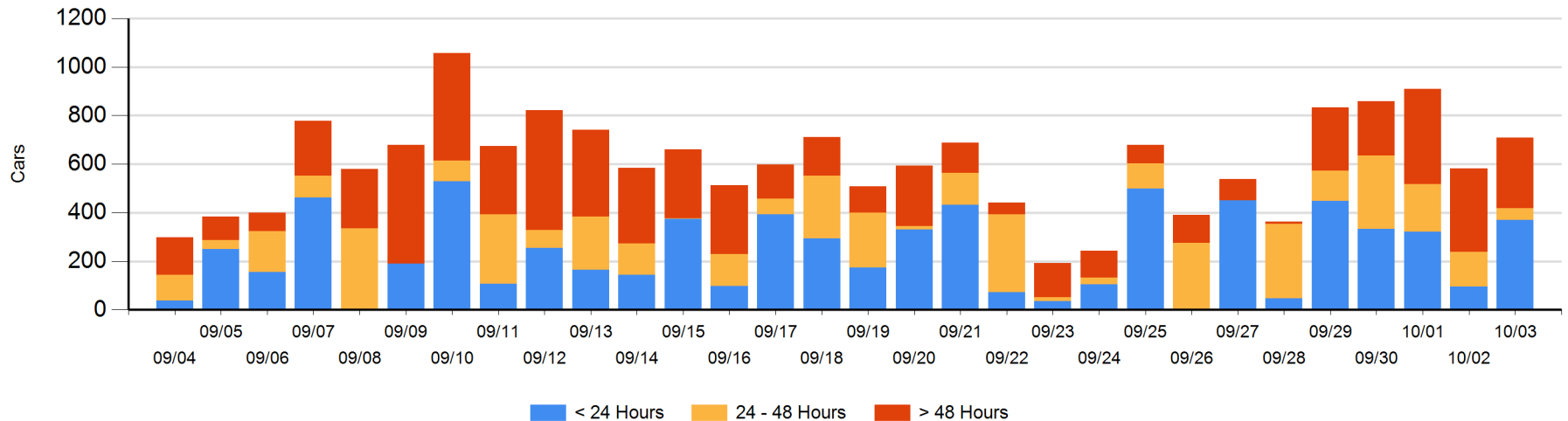
Today

	< 24 Hrs	24 - 48 Hrs	> 48-72 Hrs	> 72 Hrs	Total On Hand
CN		1		82	83
CP	370	48	119	89	626

Change in Last 24 Hours

	< 24 Hrs	24-48 Hrs	48 - 72 Hrs	> 72 Hrs
CN	-47	-24	-116	66
CP	322	-71	107	-109

Loaded Cars on Hand Thunder Bay Waiting for Placement - Last 30 Days All Railways



Measurement Definitions

Loads on Wheels	<p>Count of loaded rail cars including all rail cars that have been released loaded at origin and have not been reported by the railway as unloaded at destination.</p> <p>Counts include all rail cars (hopper cars and boxcars) moving within a pipeline.</p>
Loads Not Moving	<p>Loaded rail cars for which the railways have not reported a movement event for 48 hours or more whether the rail car is at origin, enroute or at destination.</p>
Port Unloads	<p>Count of rail cars reported by railways as unloaded at the western port destinations of Vancouver, Prince Rupert and Thunder Bay.</p> <p>Unload counts include all rail cars (hopper cars and boxcars) unloaded by all receivers including major port terminals, transloaders and other receivers.</p>
Cars Arrived	<p>Count of rail cars reported as arrived at the destination railway terminal.</p>
Cars Received in Interchange	<p>Count of rail cars received in interchange by each railway within a destination railway terminal. Interchange activity is tracked for the Vancouver and Thunder Bay pipelines as applicable.</p>
Cars Delivered in Interchange	<p>Count of rail cars delivered in interchange by each railway within a destination railway terminal. Interchange activity is tracked for the Vancouver and Thunder Bay pipelines as applicable.</p>
Cars Placed for Unloading	<p>Count of rail cars reported by the railways as placed loaded at the receiver's facility for unloading.</p>
Loads on Wheels at Destination	<p>Count of rail cars that remain under load within the destination railway terminal including rail cars that have been reported as placed for unloading but not yet reported as unloaded.</p>
Waiting Placement for Unloading	<p>Count of rail cars that have been reported as arrived at the destination railway terminal but not reported as placed for unloading by the railway.</p> <p>For the Ports of Vancouver, Prince Rupert and Thunder Bay the count of rail cars waiting placement for unloading is categorized by age – i.e. the elapsed time from arrival at destination to the current report date.</p>