

SPEED READ

- Loads on wheels declined slightly overnight, reflecting lower CP volumes offset by an increase in CN volumes. On a net basis, volumes decreased due to reduced traffic in the Thunder Bay, USA/MEX and E. Canada corridors offset by higher volumes in the Vancouver and Prince Rupert corridors.
- Network fluidity deteriorated overnight, led by a rise in idle car counts on CN by 17% (+128) offset by a decline in idle car counts on CP by 2% (-24). The total count of cars for 4+ days on both railways fell 25% (-211) overnight - now at 627 cars.
- Week 11 unloads concluded ahead of prior week's performance by 200 unloads, marking an improvement in week over week performance at Vancouver offset by lower unloads at Thunder Bay and Prince Rupert.

Loads on Wheels

- Loads on wheels decreased marginally (-8) overnight, due to lower traffic on CP offset by higher volumes on CN - combined total at 11,725 and 11% above the trailing 30-day average.
- On a net basis, the decline in loads on wheels indicates lower traffic in the Thunder Bay, USA/MEX and E. Canada corridors offset by higher volumes in the Vancouver and Prince Rupert corridors.
- CN volumes increased for the third consecutive day, up 3% (+188) overnight, with higher volumes in the Vancouver and Prince Rupert corridors offset by reduced traffic in the USA/MEX, E. Canada and Thunder Bay corridors. System wide CN loads on wheels now at 6,374, the highest seen in the last 30 days, and 22% above the trailing 30-day average.
- CP volumes declined 4% (-197) overnight, driven by a decline in volumes across all corridors other than USA/MEX. CP system wide loads on wheels presently at 4,986 and 2% below the trailing 30-day average.
- Vancouver now at 7,109, the highest seen in the last 30 days, rose slightly by 1% (+89) overnight and have now increased for the third consecutive day, now 20% above the trailing 30-day average.
- The Prince Rupert pipeline now at 1,340, gained 3% (+43) overnight and 13% below the trailing 30 day-average.
- Thunder Bay volumes decreased 3% (-63) overnight - now at 1,950 and 13% above the trailing 30-day average, with 75% of traffic moving on CP.

Hopper Car Rationing

- No hopper car rationing was reported for either CN or CP in week 10 and 11.

Loads Not Moving

- **The count of cars not moving for 48+ hours gained 5% (+104) overnight and have now increased for three consecutive days, reflecting higher counts on CN offset by lower counts on CP. Idle car counts now at 2,018 and 2% above the trailing 30-day average.**
- CN
 - **The count of idle cars for 48+ hours gained 17% (+128) overnight - presently at 871 cars.**
 - The number of cars idle for 4+ days declined 42% (-118) overnight - now at 162 cars.
 - The count of cars not moving for 7+ days decreased 44% (-66) overnight - now at 83 cars.
 - Vancouver represents 72% of all idle cars.
 - In total 47% of all idle cars are dwelling at origin locations.
- CP
 - **CP idle car counts for 48+ hours decreased 2% (-24) overnight - now at 1,147 cars.**
 - The number of cars idle for 4+ days declined 17% (-93) overnight - now at 465 cars.

- The number of cars idle for 7+ days gained 15% (+11) overnight - now at 82 cars.
- Vancouver accounts for 20% of all idle cars.
- In total 77% of all idle cars are dwelling at origin locations.

Port Performance

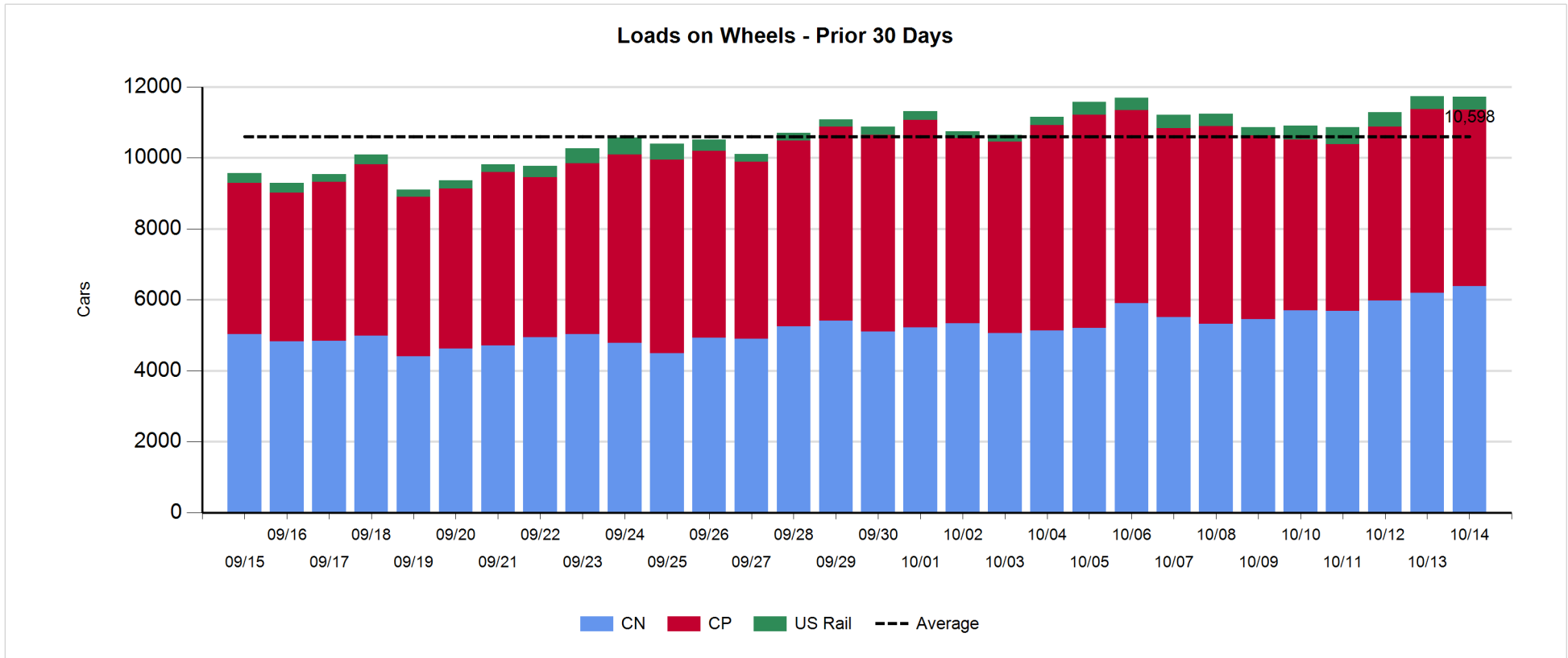
- CN and CP reported a total of 1,000 cars unloaded at the three major ports, now 13% below the trailing 30 day-average. Week 11 unloads concluded ahead of last week's pace by 200 unloads, marking higher unloads at Vancouver offset by lower unloads at Thunder Bay and Prince Rupert.
- Vancouver
 - 716 unloads reported by CN and CP at the Port of Vancouver; CN - 244 and CP - 472. Week 11 unloads finished ahead of last week's performance by 850 unloads.
 - There are around 1,850 cars on site at Vancouver with 1,350 cars arriving at the port in the last 24 hours.
 - CN and CP have 1,350 cars in British Columbia en route to Vancouver, with 600 cars at Kamloops and west, and 66% of traffic moving on CN.
- Prince Rupert
 - Prince Rupert reported 166 unloads, ended behind last week's unloads by more than 200 unloads.
 - Loads on wheels now above 1,000 cars - presently at 1,340 cars.
 - There are 400 cars west of Jasper en route to Prince Rupert.
 - There are more than 50 cars on site at Prince Rupert with 100 cars arriving at the port in the last 24 hours. Given the structure of the pipeline, there appears to be sufficient cars available to support unloads in the next few days.
- Thunder Bay
 - 118 unloads were reported at Thunder Bay yesterday. Week 11 unloads finished behind last week's pace by more than 400 unloads.
 - There are 900 cars on site at Thunder Bay with about 500 cars arriving at the port in the prior 24 hours.
 - There are more than 50 cars en route to Thunder Bay from Winnipeg and east. Cars on hand and those en route should support unloads in the next few days.

Daily Loads on Wheels - 10/14/2018

| | E Canada | Prince Rupert | Thunder Bay | USA/MEX | Vancouver | Total |
|------------|----------|---------------|-------------|---------|-----------|--------|
| CN | 192 | 1,333 | 494 | 232 | 4,123 | 6,374 |
| CP | 116 | 7 | 1,456 | 438 | 2,969 | 4,986 |
| Short Line | 9 | | | | 17 | 26 |
| US Rail | | | | 339 | | 339 |
| | 317 | 1,340 | 1,950 | 1,009 | 7,109 | 11,725 |

Change in Loads on Wheels - Prior 24 Hours

| | E Canada | Prince Rupert | Thunder Bay | USA/MEX | Vancouver | Total |
|------------|----------|---------------|-------------|---------|-----------|-------|
| CN | -19 | 43 | -1 | -63 | 228 | 188 |
| CP | -6 | 0 | -62 | 4 | -133 | -197 |
| Short Line | 0 | | | | -6 | -6 |
| US Rail | | | | 7 | | 7 |
| | -25 | 43 | -63 | -52 | 89 | -8 |



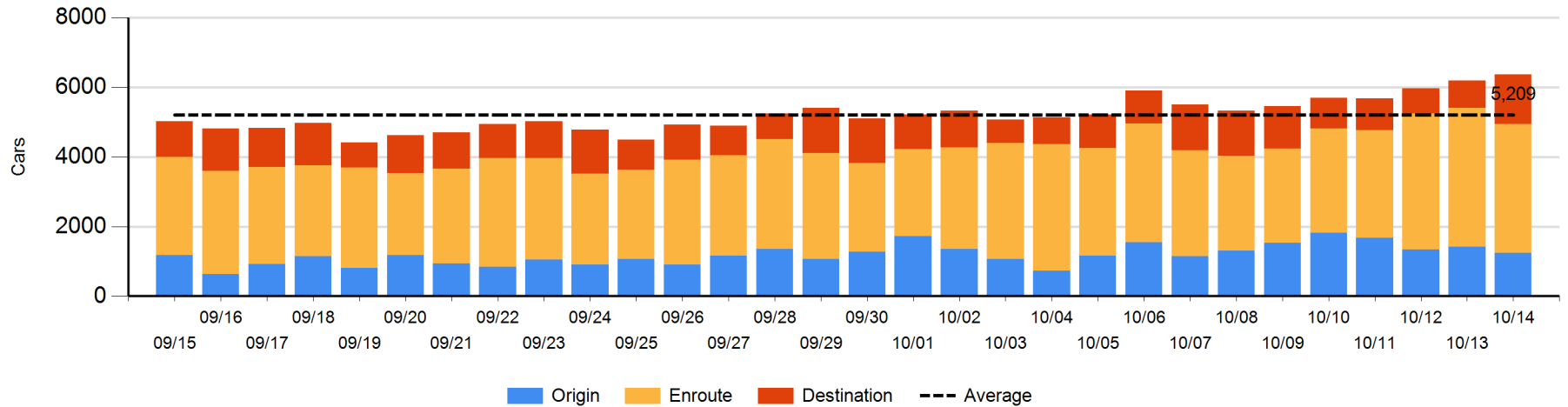
Daily Loads on Wheels By Pipeline Location - 10/14/2018

| | E Canada | Prince Rupert | Thunder Bay | USA/MEX | Vancouver | Total |
|----------------------|----------|---------------|-------------|---------|-----------|-------|
| CN | | | | | | |
| Origin | 2 | 311 | | 5 | 917 | 1,235 |
| Enroute | 141 | 960 | 150 | 176 | 2,285 | 3,712 |
| Destination | 49 | 62 | 344 | 51 | 921 | 1,427 |
| | 192 | 1,333 | 494 | 232 | 4,123 | 6,374 |
| CP | | | | | | |
| Origin | 9 | 7 | 672 | 145 | 762 | 1,595 |
| Enroute | 104 | | 238 | 232 | 1,306 | 1,880 |
| Destination | 3 | | 546 | 61 | 901 | 1,511 |
| | 116 | 7 | 1,456 | 438 | 2,969 | 4,986 |
| US Rail / Short Line | | | | | | |
| Origin | | | | | | |
| Enroute | 3 | | | 222 | | 225 |
| Destination | 6 | | | 117 | 17 | 140 |
| | 9 | | | 339 | 17 | 365 |

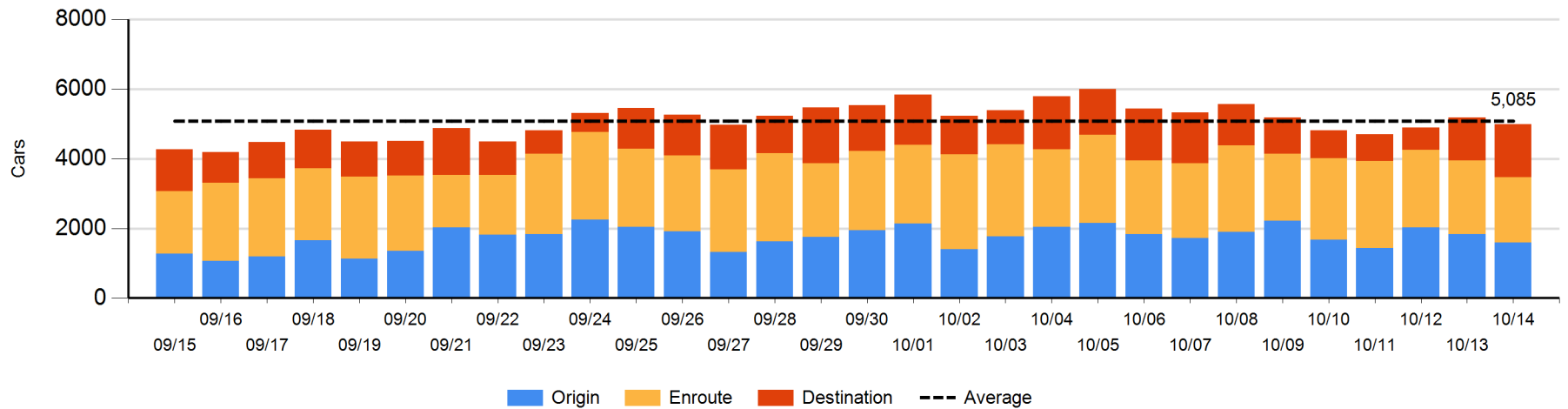
Change in Daily Loads on Wheels By Pipeline Location - Prior 24 Hours

| | E Canada | Prince Rupert | Thunder Bay | USA/MEX | Vancouver | Total |
|----------------------|----------|---------------|-------------|---------|-----------|-------|
| CN | | | | | | |
| Origin | 0 | -82 | | -24 | -83 | -189 |
| Enroute | -3 | 179 | -264 | -32 | -155 | -275 |
| Destination | -16 | -54 | 263 | -7 | 466 | 652 |
| | -19 | 43 | -1 | -63 | 228 | 188 |
| CP | | | | | | |
| Origin | 0 | 0 | -113 | -4 | -121 | -238 |
| Enroute | -9 | | -55 | -1 | -174 | -239 |
| Destination | 3 | | 106 | 9 | 162 | 280 |
| | -6 | 0 | -62 | 4 | -133 | -197 |
| US Rail / Short Line | | | | | | |
| Origin | | | | | | |
| Enroute | 0 | | | -28 | | -28 |
| Destination | 0 | | | 35 | -6 | 29 |
| | 0 | | | 7 | -6 | 1 |

CN Loads on Wheels by Pipeline Location - 10/14/2018



CP Loads on Wheels by Pipeline Location - 10/14/2018

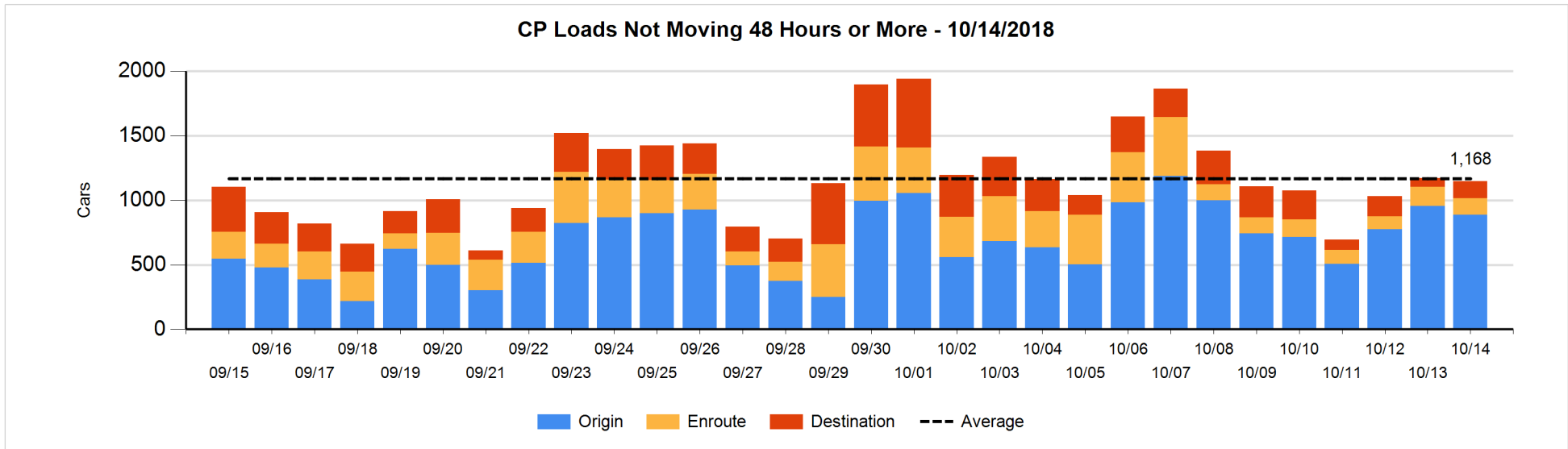
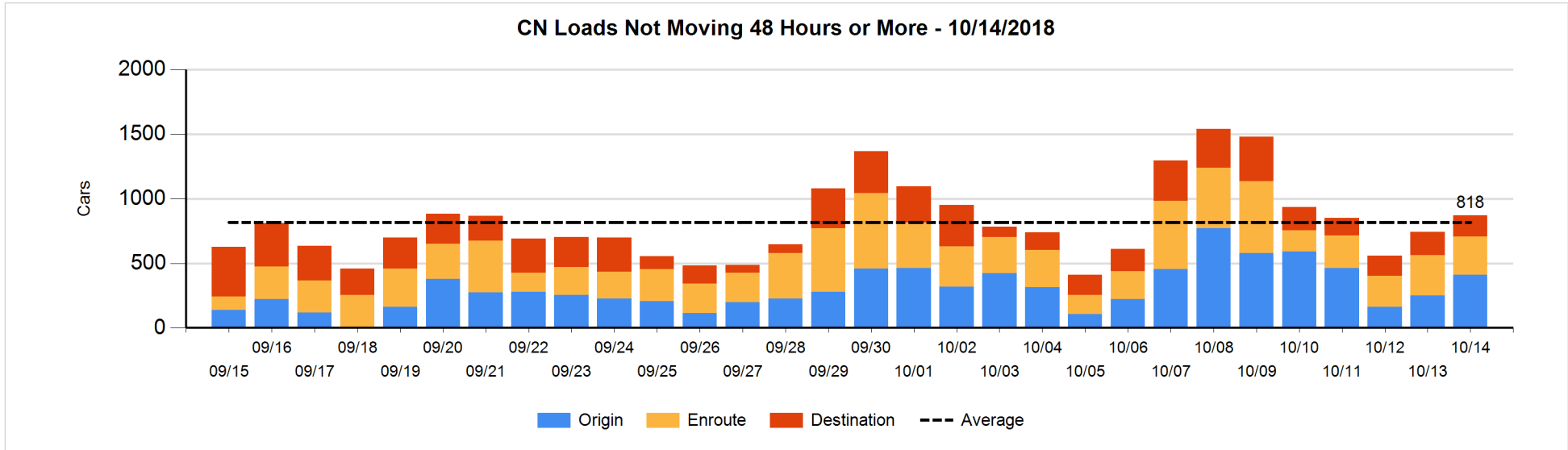


Loads Not Moving 48 Hours or More - 10/14/2018

| | E Canada | Prince Rupert | Thunder Bay | USA/MEX | Vancouver | Total |
|----------------------|----------|---------------|-------------|---------|-----------|-------|
| CN | | | | | | |
| Origin | 2 | | | 5 | 403 | 410 |
| Enroute | 26 | 50 | 5 | 34 | 180 | 295 |
| Destination | 33 | 3 | 38 | 46 | 46 | 166 |
| | 61 | 53 | 43 | 85 | 629 | 871 |
| CP | | | | | | |
| Origin | 8 | 7 | 617 | 143 | 112 | 887 |
| Enroute | 1 | | 42 | 70 | 16 | 129 |
| Destination | | | 28 | | 103 | 131 |
| | 9 | 7 | 687 | 213 | 231 | 1147 |
| US Rail / Short Line | | | | | | |
| Origin | | | | | | |
| Enroute | 3 | | | 86 | | 89 |
| Destination | 6 | | | 72 | 2 | 80 |
| | 9 | | | 158 | 2 | 169 |

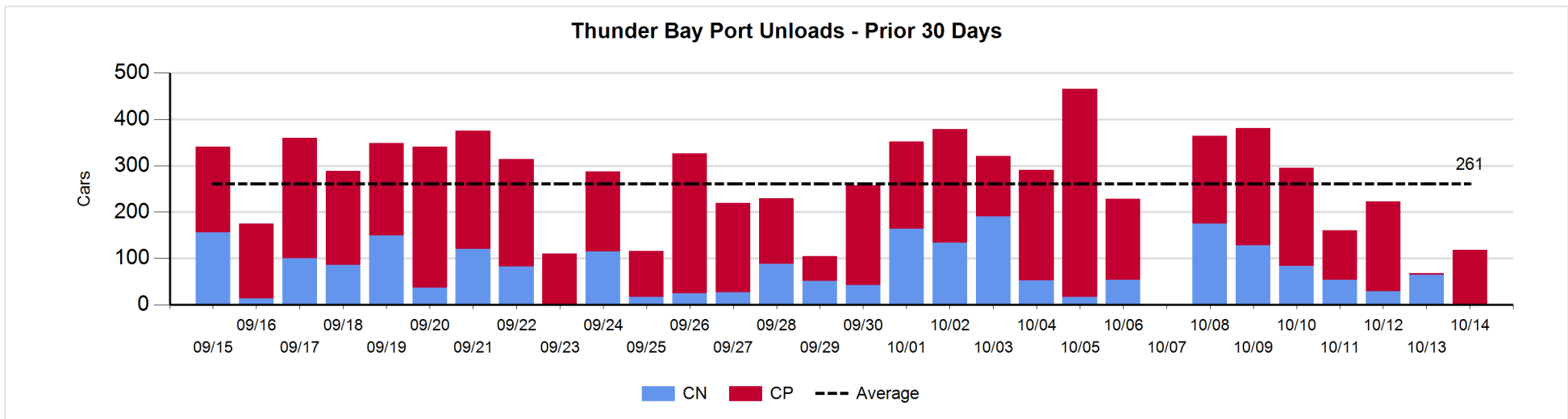
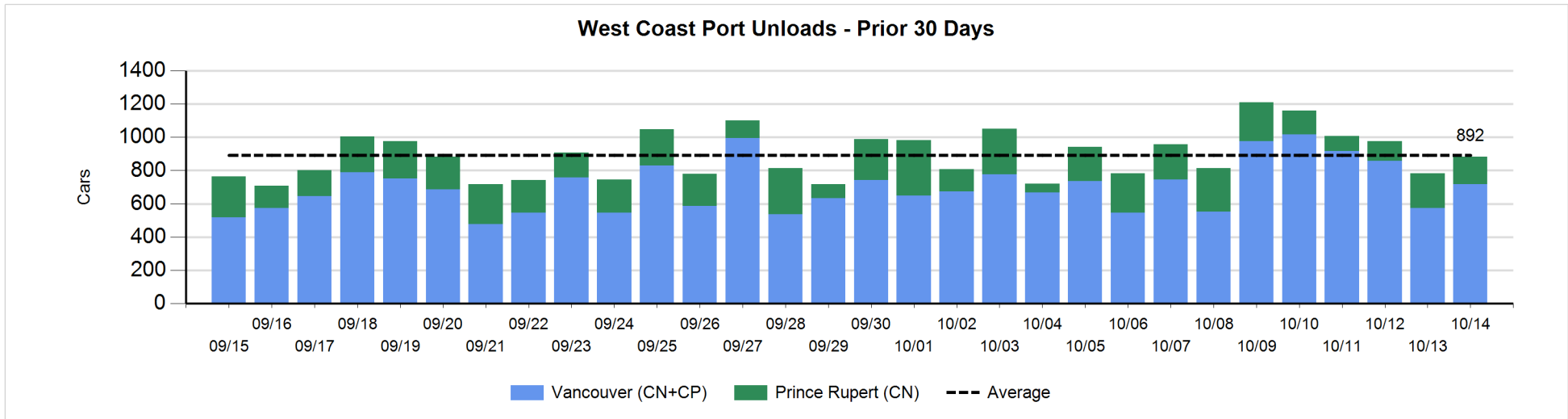
Change in Loads Not Moving 48 Hours or More - 10/14/2018

| | E Canada | Prince Rupert | Thunder Bay | USA/MEX | Vancouver | Total |
|----------------------|----------|---------------|-------------|---------|-----------|-------|
| CN | | | | | | |
| Origin | 0 | -45 | | 5 | 201 | 161 |
| Enroute | 18 | -14 | 0 | -32 | 8 | -20 |
| Destination | 23 | 1 | 31 | 10 | -78 | -13 |
| | 41 | -58 | 31 | -17 | 131 | 128 |
| CP | | | | | | |
| Origin | 7 | 0 | 167 | 93 | -336 | -69 |
| Enroute | -2 | | 1 | 15 | -34 | -20 |
| Destination | | | -11 | -2 | 78 | 65 |
| | 5 | 0 | 157 | 106 | -292 | -24 |
| US Rail / Short Line | | | | | | |
| Origin | | | | | | |
| Enroute | 0 | | | 65 | | 65 |
| Destination | 1 | | | 15 | -4 | 12 |
| | 1 | | | 80 | -4 | 77 |



Port Unloads - 10/14/2018

| | Prince Rupert | Vancouver | West Coast Total | Thunder Bay | Total |
|----|---------------|-----------|------------------|-------------|-------|
| CN | 166 | 244 | 410 | 1 | 411 |
| CP | | 472 | 472 | 117 | 589 |
| | 166 | 716 | 882 | 118 | 1,000 |



Port Terminal Status

Vancouver

Daily Activity for 10/14/2018

| | Cars Arrived | Cars Received in Interchange | Cars Delivered in Interchange | Cars Placed for Unloading | Loads on Wheels at Destination As of 10/14/2018 |
|-----|--------------|------------------------------|-------------------------------|---------------------------|---|
| CN | 514 | 226 | 201 | 301 | 921 |
| CP | 831 | 201 | 228 | 481 | 901 |
| SRY | | 2 | | 1 | 17 |

Port Unloads

| | 10/14 | 10/13 | Week To Date | Last Week |
|-----|-------|-------|--------------|-----------|
| CN | 244 | 267 | 2,453 | 1,982 |
| CP | 472 | 308 | 3,158 | 2,817 |
| SRY | 8 | 1 | 97 | 49 |

Age Profile of Loaded Cars Waiting Placement for Unloading

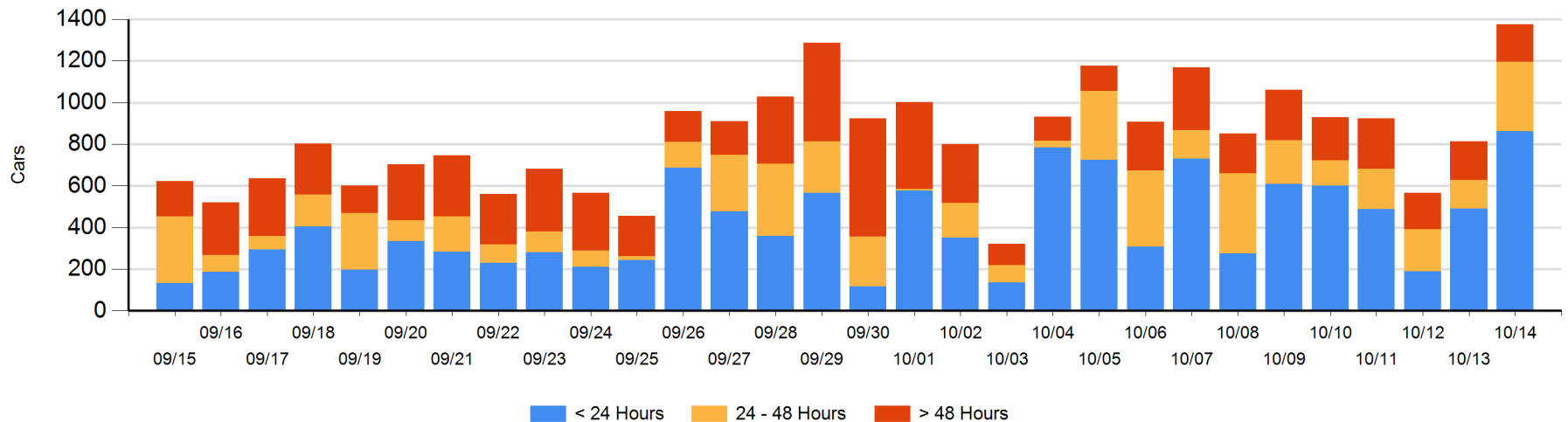
Today

| | < 24 Hrs | 24 - 48 Hrs | > 48-72 Hrs | > 72 Hrs | Total On Hand |
|-----|----------|-------------|-------------|----------|---------------|
| CN | 432 | 107 | 19 | 34 | 592 |
| CP | 431 | 225 | 7 | 121 | 784 |
| SRY | | | | | 0 |

Change in Last 24 Hours

| | < 24 Hrs | 24-48 Hrs | 48 - 72 Hrs | > 72 Hrs |
|-----|----------|-----------|-------------|----------|
| CN | 325 | 88 | -21 | 19 |
| CP | 46 | 107 | -86 | 85 |
| SRY | | | | |

Loaded Cars on Hand Vancouver Waiting for Placement - Last 30 Days All Railways



Port Terminal Status

Prince Rupert

Daily Activity for 10/14/2018

| | Cars Arrived | Cars Received in Interchange | Cars Delivered in Interchange | Cars Placed for Unloading | Loads on Wheels at Destination As of 10/14/2018 |
|----|--------------|------------------------------|-------------------------------|---------------------------|---|
| CN | 105 | | | 106 | 62 |

Port Unloads

| | 10/14 | 10/13 | Week To Date | Last Week |
|----|-------|-------|--------------|-----------|
| CN | 166 | 207 | 1,223 | 1,446 |

Age Profile of Loaded Cars Waiting Placement for Unloading

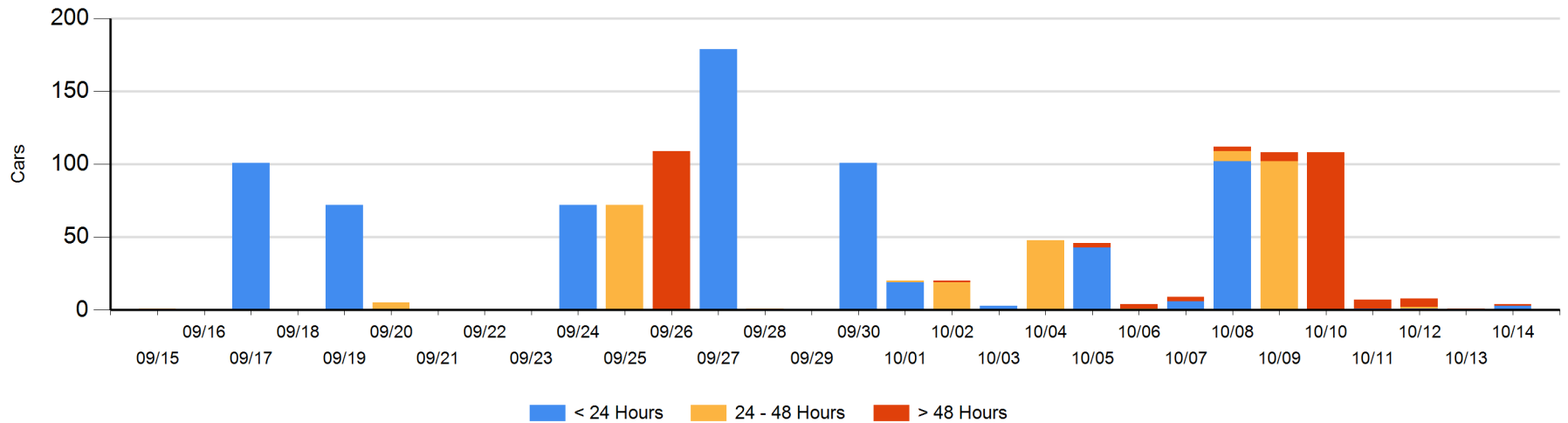
Today

| | < 24 Hrs | 24 - 48 Hrs | > 48-72 Hrs | > 72 Hrs | Total On Hand |
|----|----------|-------------|-------------|----------|---------------|
| CN | 3 | | | 1 | 4 |

Change in Last 24 Hours

| | < 24 Hrs | 24-48 Hrs | 48 - 72 Hrs | > 72 Hrs |
|----|----------|-----------|-------------|----------|
| CN | 3 | | -1 | 1 |

Loaded Cars on Hand Prince Rupert Waiting for Placement - Last 30 Days All Railways



Port Terminal Status

Thunder Bay

Daily Activity for 10/14/2018

| | Cars Arrived | Cars Received in Interchange | Cars Delivered in Interchange | Cars Placed for Unloading | Loads on Wheels at Destination As of 10/14/2018 |
|----|--------------|------------------------------|-------------------------------|---------------------------|---|
| CN | 264 | | | 37 | 344 |
| CP | 223 | | | 256 | 546 |

Port Unloads

| | 10/14 | 10/13 | Week To Date | Last Week |
|----|-------|-------|--------------|-----------|
| CN | 1 | 65 | 536 | 612 |
| CP | 117 | 3 | 1,073 | 1,424 |

Age Profile of Loaded Cars Waiting Placement for Unloading

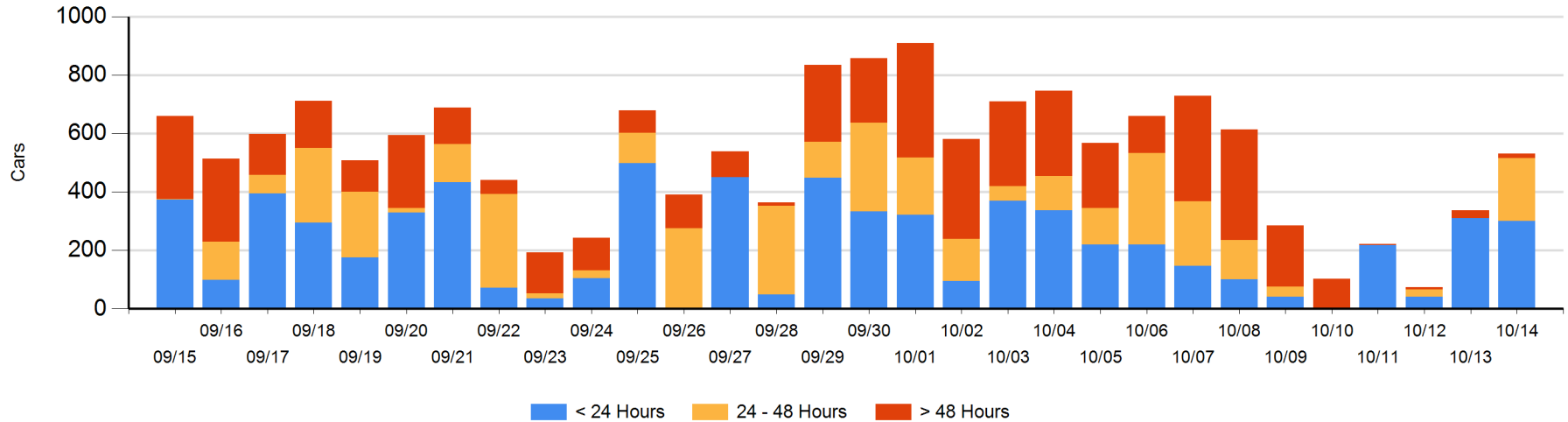
Today

| | < 24 Hrs | 24 - 48 Hrs | > 48-72 Hrs | > 72 Hrs | Total On Hand |
|----|----------|-------------|-------------|----------|---------------|
| CN | 227 | | | | 227 |
| CP | 74 | 214 | | 17 | 305 |

Change in Last 24 Hours

| | < 24 Hrs | 24-48 Hrs | 48 - 72 Hrs | > 72 Hrs |
|----|----------|-----------|-------------|----------|
| CN | 227 | | | |
| CP | -236 | 214 | -24 | 14 |

Loaded Cars on Hand Thunder Bay Waiting for Placement - Last 30 Days All Railways



Measurement Definitions

| | |
|---------------------------------|---|
| Loads on Wheels | <p>Count of loaded rail cars including all rail cars that have been released loaded at origin and have not been reported by the railway as unloaded at destination.</p> <p>Counts include all rail cars (hopper cars and boxcars) moving within a pipeline.</p> |
| Loads Not Moving | <p>Loaded rail cars for which the railways have not reported a movement event for 48 hours or more whether the rail car is at origin, enroute or at destination.</p> |
| Port Unloads | <p>Count of rail cars reported by railways as unloaded at the western port destinations of Vancouver, Prince Rupert and Thunder Bay.</p> <p>Unload counts include all rail cars (hopper cars and boxcars) unloaded by all receivers including major port terminals, transloaders and other receivers.</p> |
| Cars Arrived | <p>Count of rail cars reported as arrived at the destination railway terminal.</p> |
| Cars Received in Interchange | <p>Count of rail cars received in interchange by each railway within a destination railway terminal. Interchange activity is tracked for the Vancouver and Thunder Bay pipelines as applicable.</p> |
| Cars Delivered in Interchange | <p>Count of rail cars delivered in interchange by each railway within a destination railway terminal. Interchange activity is tracked for the Vancouver and Thunder Bay pipelines as applicable.</p> |
| Cars Placed for Unloading | <p>Count of rail cars reported by the railways as placed loaded at the receiver's facility for unloading.</p> |
| Loads on Wheels at Destination | <p>Count of rail cars that remain under load within the destination railway terminal including rail cars that have been reported as placed for unloading but not yet reported as unloaded.</p> |
| Waiting Placement for Unloading | <p>Count of rail cars that have been reported as arrived at the destination railway terminal but not reported as placed for unloading by the railway.</p> <p>For the Ports of Vancouver, Prince Rupert and Thunder Bay the count of rail cars waiting placement for unloading is categorized by age – i.e. the elapsed time from arrival at destination to the current report date.</p> |