

SPEED READ

- Loads on wheels decreased marginally overnight, marking higher CP volumes offset by a decline in CN volumes. On a net basis, volumes fell due to lower traffic across all corridors other than Thunder Bay.
- Network fluidity deteriorated overnight, led by a decline in idle car counts on CN by 15% (-135) offset by an increase in idle car counts on CP by 18% (+181). The total count of cars for 4+ days on both railways decreased 6% (-29) overnight - now at 487 cars.
- One day in Week 12 unloads now ahead of prior week's performance by more than 350 unloads, reflecting improved week over week performance at Vancouver and Thunder Bay offset by reduced unloads at Prince Rupert.

Loads on Wheels

- Loads on wheels decreased slightly by 1% (-133) overnight, due to higher volumes on CP offset by lower volumes on CN - combined total at 11,621 and 9% above the trailing 30-day average.
- On a net basis, the decline in loads on wheels reflects reduced traffic across all corridors other than Thunder Bay.
- CN volumes fell 6% (-374) overnight, with reduced traffic across all corridors - Vancouver, Thunder Bay, Prince Rupert, USA/MEX and E. Canada. System wide CN loads on wheels presently at 6,012 and 15% above the trailing 30-day average.
- CP volumes increased 7% (+340) overnight, driven by an increase in traffic across all corridors - Vancouver, Thunder Bay, USA/MEX and E. Canada. CP system wide loads on wheels now at 5,348 and 4% above the trailing 30-day average.
- Vancouver now at 7,016, fell 2% (-128) overnight, now 17% above the trailing 30-day average.
- The Prince Rupert pipeline now at 1,324, decreased marginally by 1% (-16) overnight and 14% below the trailing 30 day-average.
- Thunder Bay volumes increased 3% (+65) overnight - now at 2,016 and 16% above the trailing 30-day average, with 80% of traffic moving on CP.

Hopper Car Rationing

- No hopper car rationing was reported for either CN or CP in week 10 and 11.

Loads Not Moving

- **The count of cars not moving for 48+ hours increased 2% (+46) overnight, reflecting reduced counts on CN offset by higher counts on CP. Idle car counts now at 1,951 and 2% below the trailing 30 day-average.**
- CN
 - **The count of idle cars for 48+ hours declined 15% (-135) overnight - now at 736 cars.**
 - The number of cars idle for 4+ days rose 14% (+22) overnight - now at 184 cars.
 - The count of cars not moving for 7+ days decreased 14% (-12) overnight - now at 71 cars.
 - Vancouver represents 68% of all idle cars.
 - In total 60% of all idle cars are dwelling at origin locations.
- CP
 - **CP idle car counts for 48+ hours gained 18% (+181) overnight - now at 1,215 cars.**
 - The number of cars idle for 4+ days decreased 14% (-51) overnight - now at 303 cars.
 - The number of cars idle for 7+ days declined significantly by 45% (-37) overnight - now at 45 cars, the lowest seen in the last 30 days.
 - Vancouver accounts for 20% of all idle cars.

- In total 53% of all idle cars are dwelling at origin locations.

Port Performance

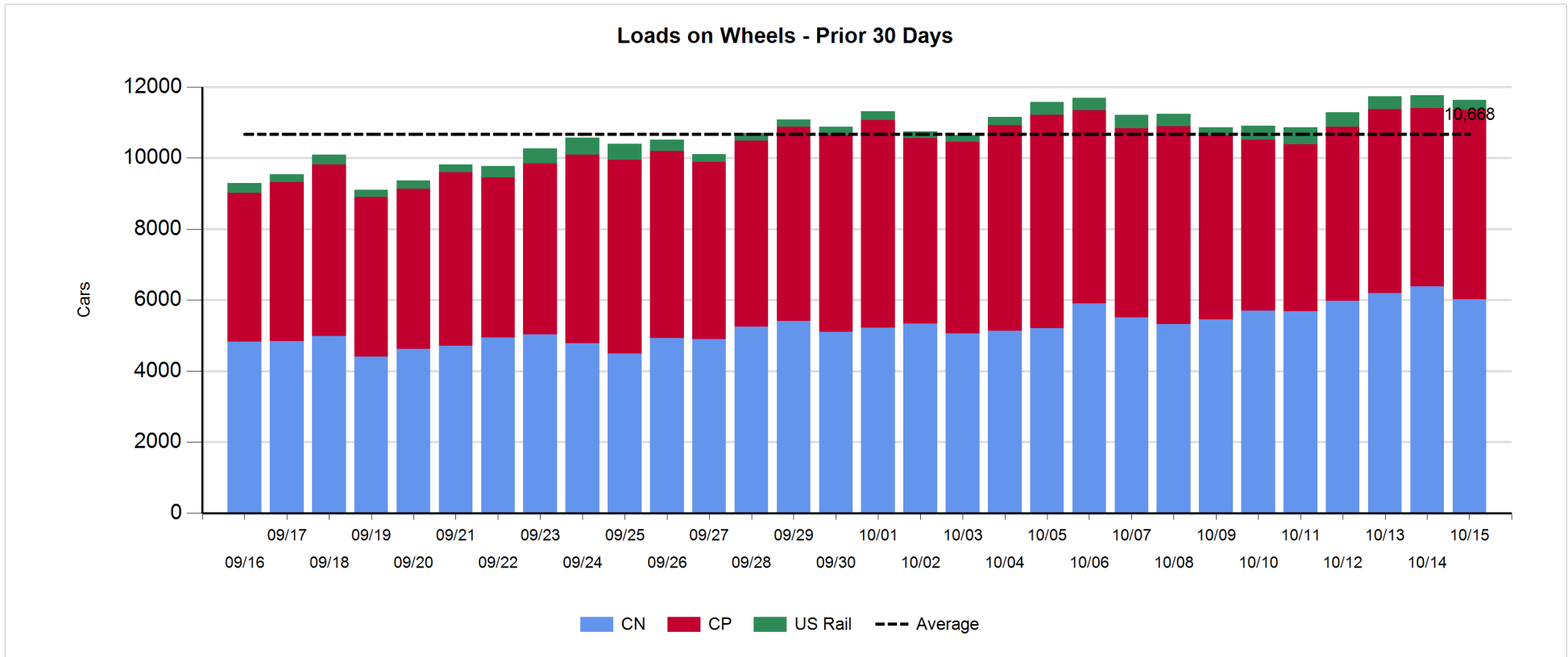
- CN and CP reported a total of 1,556 cars unloaded at the three major ports, now 33% above the trailing 30-day average. One day in Week 12 unloads are tracking ahead of last week's pace by more than 350 unloads, reflecting higher unloads at Vancouver and Thunder Bay offset by reduced unloads at Prince Rupert.
- Vancouver
 - 954 unloads reported by CN and CP at the Port of Vancouver; CN - 476 and CP - 478. One day in Week 12 unloads are tracking ahead of last week's performance by 400 unloads.
 - There are more than 1,900 cars on site at Vancouver with 1,150 cars arriving at the port in the last 24 hours.
 - CN and CP have 1,300 cars in British Columbia en route to Vancouver, with more than 900 cars at Kamloops and west, and 57% of traffic moving on CN.
- Prince Rupert
 - Prince Rupert reported 222 unloads, now behind last week's unloads after one day by 50 unloads.
 - Loads on wheels now above 1,000 cars - presently at 1,324 cars.
 - There are fewer than 300 cars west of Jasper en route to Prince Rupert.
 - There are more than 150 cars on site at Prince Rupert with less than 350 cars arriving at the port in the last 24 hours. Given the structure of the pipeline, there appears to be sufficient cars available to support unloads in the next few days.
- Thunder Bay
 - 380 unloads were reported at Thunder Bay yesterday. One day in Week 12 unloads are tracking ahead of last week's pace by 16 unloads.
 - There are 550 cars on site at Thunder Bay with about 50 cars arriving at the port in the prior 24 hours.
 - There are 400 cars en route to Thunder Bay from Winnipeg and east. Cars on hand and those en route should support unloads in the next few days.

Daily Loads on Wheels - 10/15/2018

	E Canada	Prince Rupert	Thunder Bay	USA/MEX	Vancouver	Total
CN	164	1,317	410	219	3,902	6,012
CP	119	7	1,606	512	3,104	5,348
Short Line	16				10	26
US Rail				242		242
	299	1,324	2,016	973	7,016	11,628

Change in Loads on Wheels - Prior 24 Hours

	E Canada	Prince Rupert	Thunder Bay	USA/MEX	Vancouver	Total
CN	-28	-16	-84	-13	-233	-374
CP	3	0	149	76	112	340
Short Line	7				-7	0
US Rail				-99		-99
	-18	-16	65	-36	-128	-133

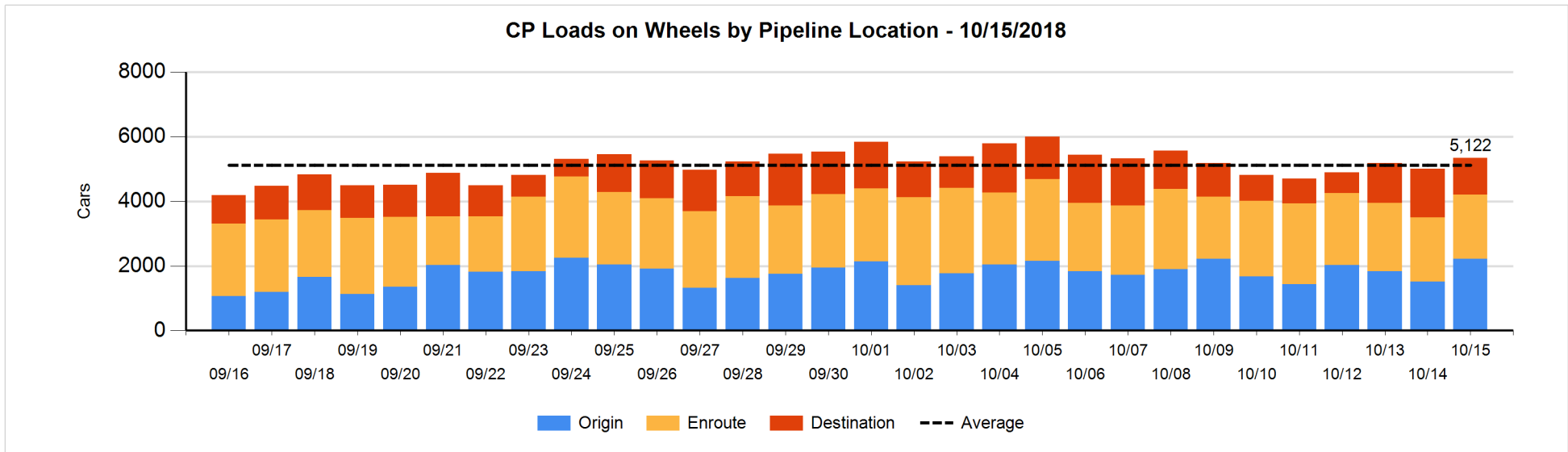
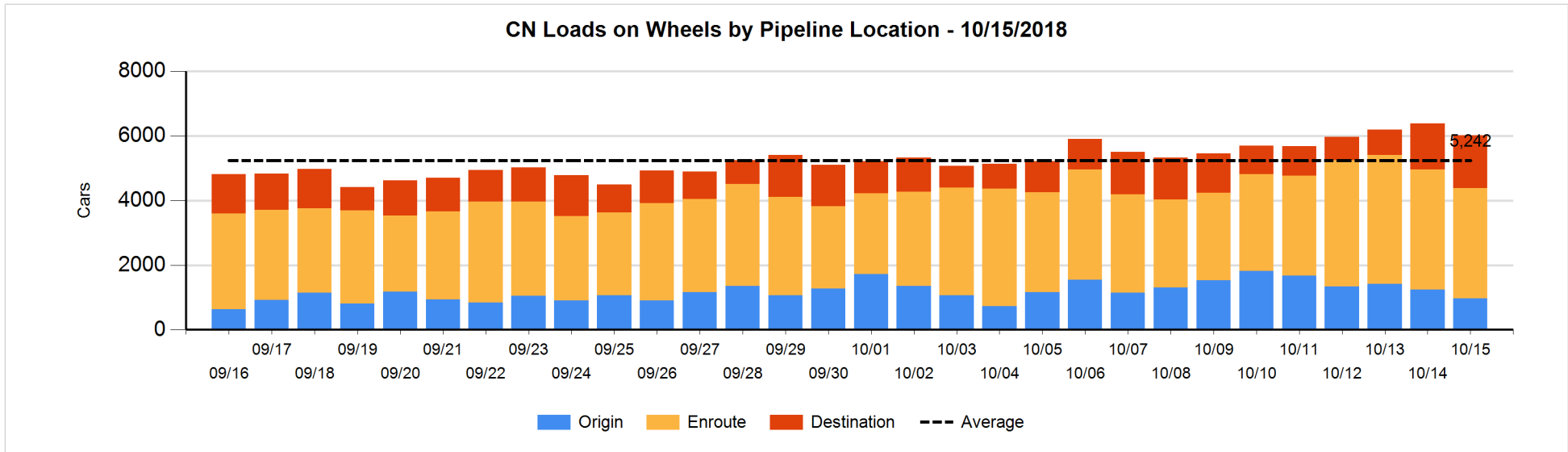


Daily Loads on Wheels By Pipeline Location - 10/15/2018

	E Canada	Prince Rupert	Thunder Bay	USA/MEX	Vancouver	Total
CN						
Origin	2	407	85	6	473	973
Enroute	127	735	142	178	2,228	3,410
Destination	35	175	183	35	1,201	1,629
	164	1,317	410	219	3,902	6,012
CP						
Origin	15		809	173	1,215	2,212
Enroute	103	7	436	273	1,177	1,996
Destination	1		361	66	712	1,140
	119	7	1,606	512	3,104	5,348
US Rail / Short Line						
Origin						
Enroute	1			116		117
Destination	15			126	10	151
	16			242	10	268

Change in Daily Loads on Wheels By Pipeline Location - Prior 24 Hours

	E Canada	Prince Rupert	Thunder Bay	USA/MEX	Vancouver	Total
CN						
Origin	0	96	85	1	-454	-272
Enroute	-14	-225	-8	2	-59	-304
Destination	-14	113	-161	-16	280	202
	-28	-16	-84	-13	-233	-374
CP						
Origin	6	-7	248	28	430	705
Enroute	-1	7	86	43	-129	6
Destination	-2		-185	5	-189	-371
	3	0	149	76	112	340
US Rail / Short Line						
Origin						
Enroute	-2			-108		-110
Destination	9			9	-7	11
	7			-99	-7	-99

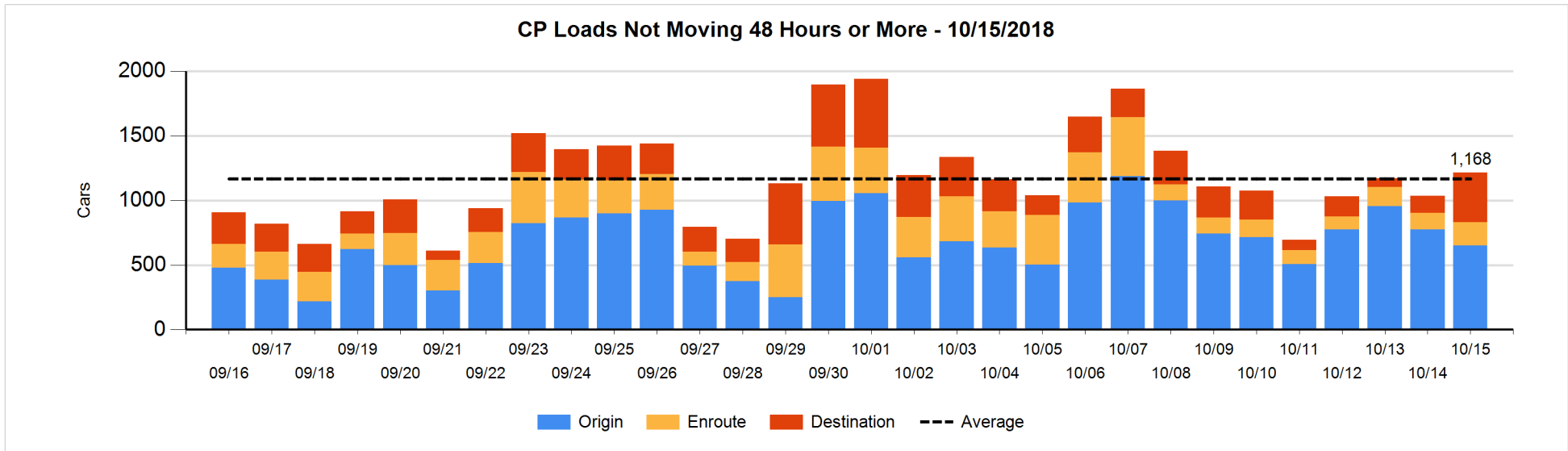
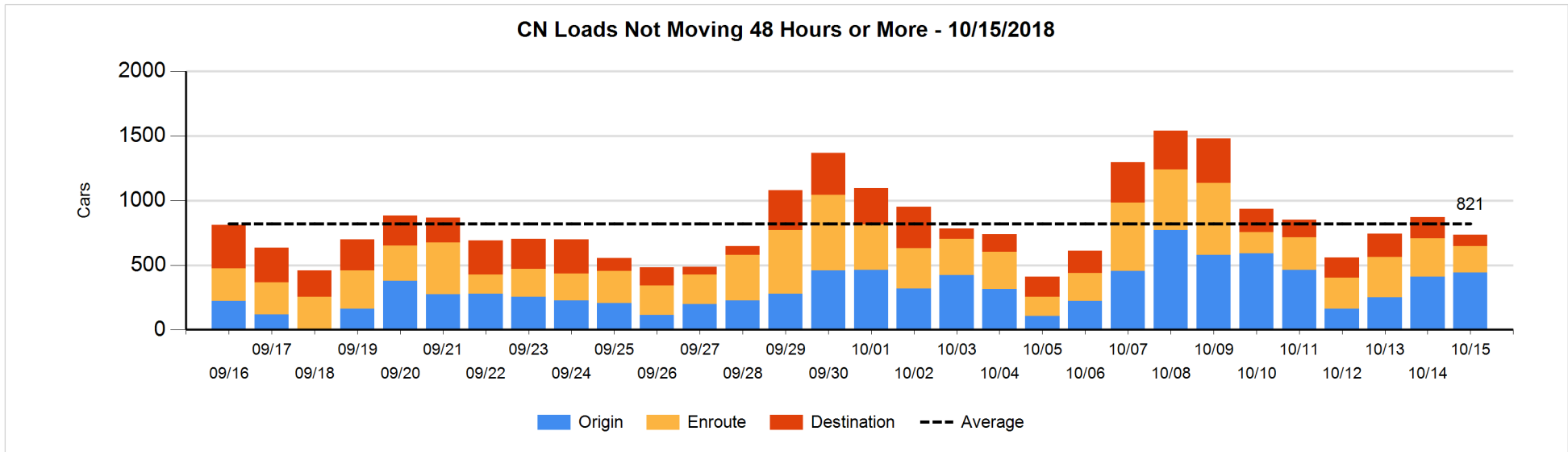


Loads Not Moving 48 Hours or More - 10/15/2018

	E Canada	Prince Rupert	Thunder Bay	USA/MEX	Vancouver	Total
CN						
Origin	2	99			341	442
Enroute	13	49		5	137	204
Destination	26	2	7	29	26	90
	41	150	7	34	504	736
CP						
Origin	9		394	125	121	649
Enroute	4		26	116	37	183
Destination			242	50	91	383
	13		662	291	249	1215
US Rail / Short Line						
Origin						
Enroute	1			40		41
Destination	5			53	6	64
	6			93	6	105

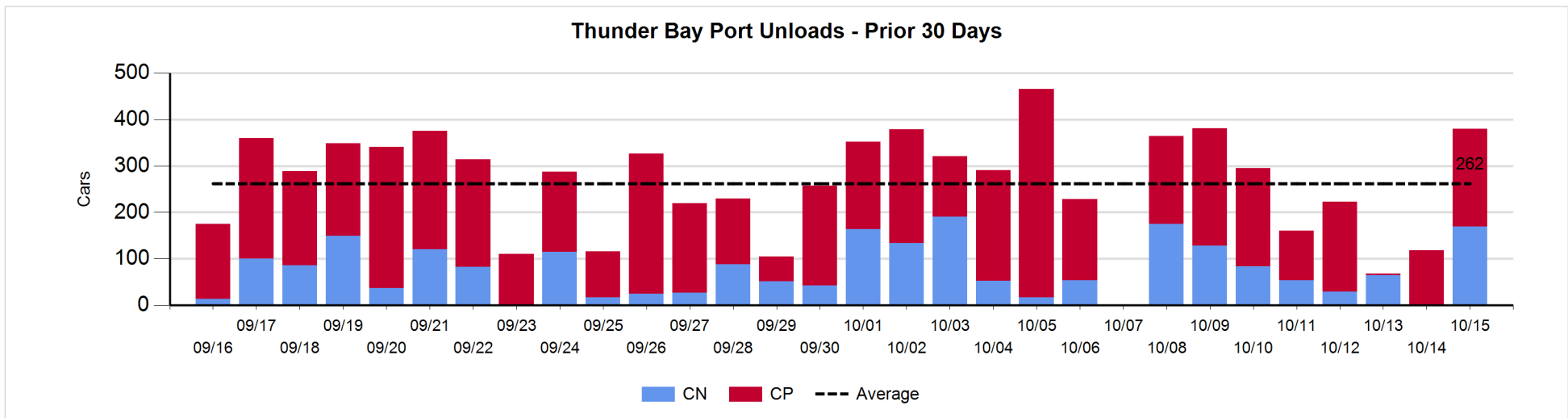
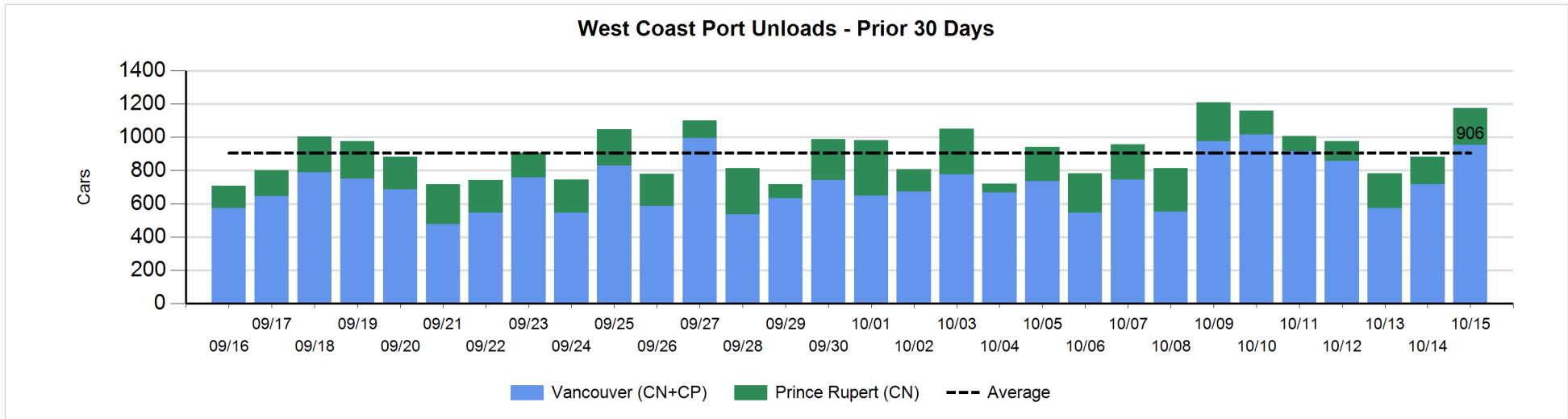
Change in Loads Not Moving 48 Hours or More - 10/15/2018

	E Canada	Prince Rupert	Thunder Bay	USA/MEX	Vancouver	Total
CN						
Origin	0	99		-5	-62	32
Enroute	-13	-1	-5	-29	-43	-91
Destination	-7	-1	-31	-17	-20	-76
	-20	97	-36	-51	-125	-135
CP						
Origin	1	-7	-112	-18	9	-127
Enroute	3		-16	48	21	56
Destination			214	50	-12	252
	4	-7	86	80	18	181
US Rail / Short Line						
Origin						
Enroute	-2			-46		-48
Destination	-1			-19	4	-16
	-3			-65	4	-64



Port Unloads - 10/15/2018

	Prince Rupert	Vancouver	West Coast Total	Thunder Bay	Total
CN	222	476	698	169	867
CP		478	478	211	689
	222	954	1,176	380	1,556



Port Terminal Status

Vancouver

Daily Activity for 10/15/2018

	Cars Arrived	Cars Received in Interchange	Cars Delivered in Interchange	Cars Placed for Unloading	Loads on Wheels at Destination As of 10/15/2018
CN	707	227	428	451	1,201
CP	450	428	227	418	712
SRY					10

Port Unloads

	10/15	10/14	Week To Date	Last Week
CN	476	244	476	2,453
CP	478	472	478	3,158
SRY	9	8	9	97

Age Profile of Loaded Cars Waiting Placement for Unloading

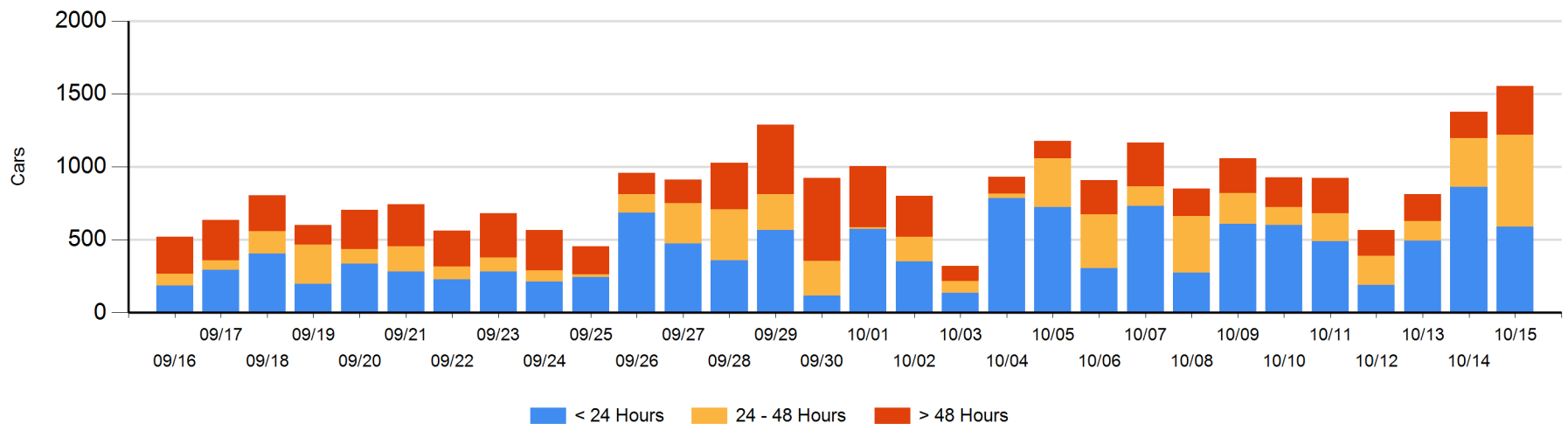
Today

	< 24 Hrs	24 - 48 Hrs	> 48-72 Hrs	> 72 Hrs	Total On Hand
CN	269	358	107	37	771
CP	319	275	84	105	783
SRY					0

Change in Last 24 Hours

	< 24 Hrs	24-48 Hrs	48 - 72 Hrs	> 72 Hrs
CN	-163	251	88	3
CP	-112	50	77	-16
SRY				

Loaded Cars on Hand Vancouver Waiting for Placement - Last 30 Days All Railways



Port Terminal Status

Prince Rupert

Daily Activity for 10/15/2018

	Cars Arrived	Cars Received in Interchange	Cars Delivered in Interchange	Cars Placed for Unloading	Loads on Wheels at Destination As of 10/15/2018
CN	332			335	175

Port Unloads

	10/15	10/14	Week To Date	Last Week
CN	222	166	222	1,223

Age Profile of Loaded Cars Waiting Placement for Unloading

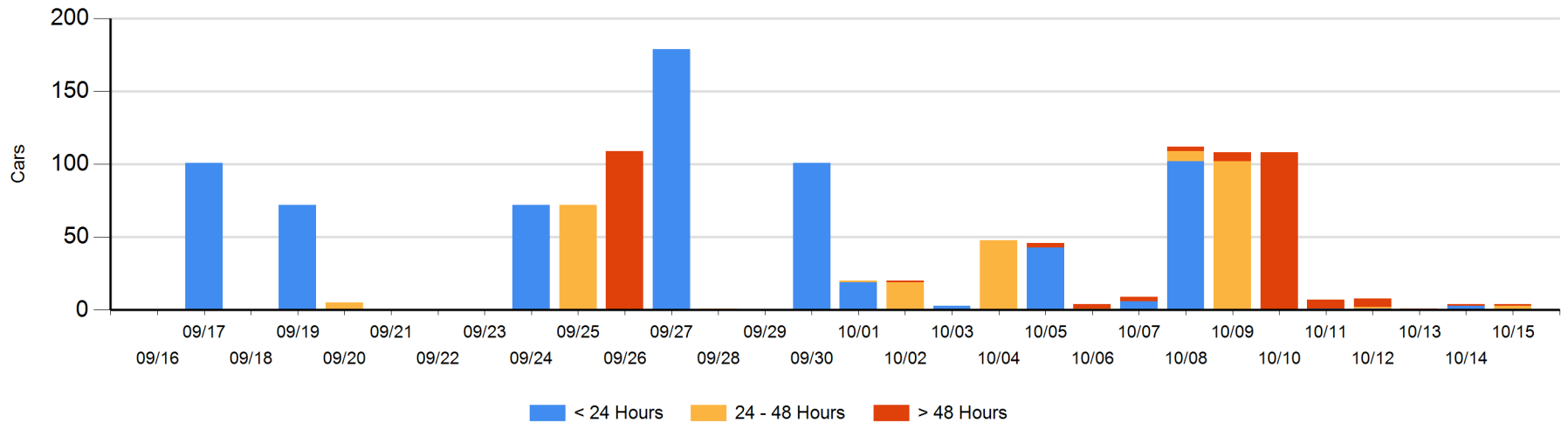
Today

	< 24 Hrs	24 - 48 Hrs	> 48-72 Hrs	> 72 Hrs	Total On Hand
CN		3		1	4

Change in Last 24 Hours

	< 24 Hrs	24-48 Hrs	48 - 72 Hrs	> 72 Hrs
CN	-3	3		0

Loaded Cars on Hand Prince Rupert Waiting for Placement - Last 30 Days All Railways



Port Terminal Status

Thunder Bay

Daily Activity for 10/15/2018

	Cars Arrived	Cars Received in Interchange	Cars Delivered in Interchange	Cars Placed for Unloading	Loads on Wheels at Destination As of 10/15/2018
CN	8			188	183
CP	26				361

Port Unloads

	10/15	10/14	Week To Date	Last Week
CN	169	1	169	536
CP	211	117	211	1,073

Age Profile of Loaded Cars Waiting Placement for Unloading

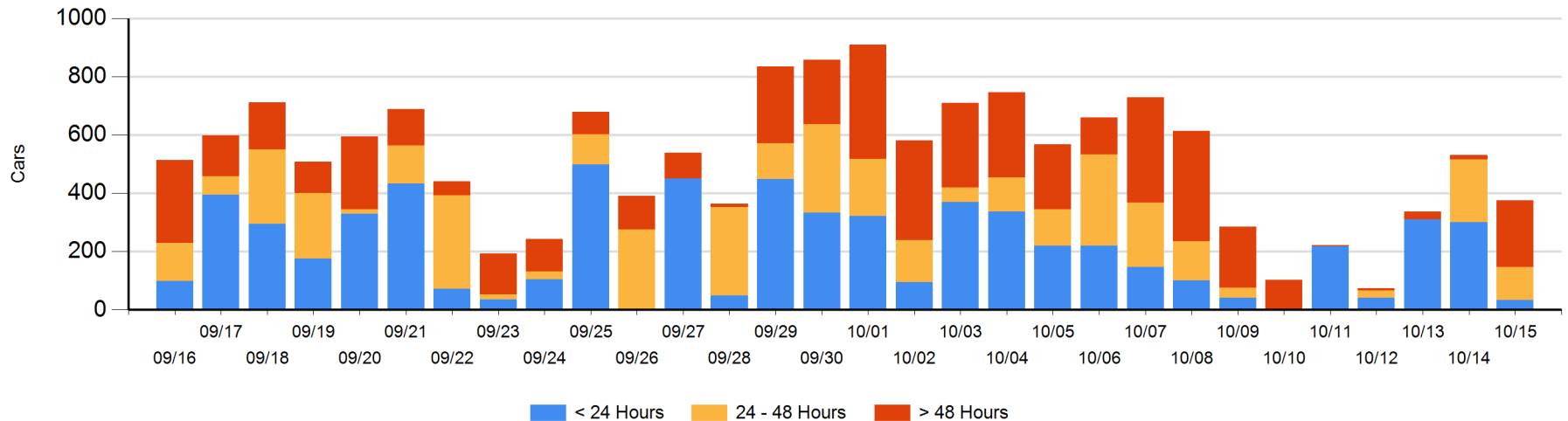
Today

	< 24 Hrs	24 - 48 Hrs	> 48-72 Hrs	> 72 Hrs	Total On Hand
CN	8	39			47
CP	26	74	214	15	329

Change in Last 24 Hours

	< 24 Hrs	24-48 Hrs	48 - 72 Hrs	> 72 Hrs
CN	-219	39		
CP	-48	-140	214	-2

Loaded Cars on Hand Thunder Bay Waiting for Placement - Last 30 Days All Railways



Measurement Definitions

Loads on Wheels	<p>Count of loaded rail cars including all rail cars that have been released loaded at origin and have not been reported by the railway as unloaded at destination.</p> <p>Counts include all rail cars (hopper cars and boxcars) moving within a pipeline.</p>
Loads Not Moving	<p>Loaded rail cars for which the railways have not reported a movement event for 48 hours or more whether the rail car is at origin, enroute or at destination.</p>
Port Unloads	<p>Count of rail cars reported by railways as unloaded at the western port destinations of Vancouver, Prince Rupert and Thunder Bay.</p> <p>Unload counts include all rail cars (hopper cars and boxcars) unloaded by all receivers including major port terminals, transloaders and other receivers.</p>
Cars Arrived	<p>Count of rail cars reported as arrived at the destination railway terminal.</p>
Cars Received in Interchange	<p>Count of rail cars received in interchange by each railway within a destination railway terminal. Interchange activity is tracked for the Vancouver and Thunder Bay pipelines as applicable.</p>
Cars Delivered in Interchange	<p>Count of rail cars delivered in interchange by each railway within a destination railway terminal. Interchange activity is tracked for the Vancouver and Thunder Bay pipelines as applicable.</p>
Cars Placed for Unloading	<p>Count of rail cars reported by the railways as placed loaded at the receiver's facility for unloading.</p>
Loads on Wheels at Destination	<p>Count of rail cars that remain under load within the destination railway terminal including rail cars that have been reported as placed for unloading but not yet reported as unloaded.</p>
Waiting Placement for Unloading	<p>Count of rail cars that have been reported as arrived at the destination railway terminal but not reported as placed for unloading by the railway.</p> <p>For the Ports of Vancouver, Prince Rupert and Thunder Bay the count of rail cars waiting placement for unloading is categorized by age – i.e. the elapsed time from arrival at destination to the current report date.</p>