

SPEED READ

- Loads on wheels decreased overnight, marking higher CP volumes offset by a decline in CN volumes. On a net basis, volumes decreased due to reduced traffic across all corridors - Vancouver, Thunder Bay, Prince Rupert, USA/MEX and E. Canada.
- Network fluidity improved overnight, led by a decline in idle car counts on CN by 30% (-221) offset by an increase in idle car counts on CP by 1% (+9). The total count of cars for 4+ days on both railways increased significantly by 110% (+536) overnight - now at 1,023 cars.
- Two days in Week 12 unloads now ahead of prior week's performance by more than 350 unloads, marking an improvement in week over week performance at Vancouver offset by reduced unloads at Prince Rupert and Thunder Bay.

Loads on Wheels

- Loads on wheels declined 5% (-612) overnight, due to higher volumes on CP offset by lower traffic on CN - combined total at 10,987 and 2% above the trailing 30-day average.
- On a net basis, the decline in loads on wheels reflects lower traffic across all corridors - Vancouver, Thunder Bay, Prince Rupert, USA/MEX and E. Canada.
- CN volumes decreased significantly by 14% (-843) overnight, with lower traffic in the Vancouver, Prince Rupert and Thunder Bay corridors offset by higher traffic in the USA/MEX and E. Canada corridors. System wide CN loads on wheels currently at 5,169 and 2% below the trailing 30-day average.
- CP volumes increased 5% (+256) overnight, driven by an increase in traffic in the Vancouver and E. Canada corridors offset by a decline in traffic in the Thunder Bay and USA/MEX corridors. CP system wide loads on wheels now at 5,576 and 8% above the trailing 30-day average.
- Vancouver now at 6,813, decreased 3% (-204) overnight, now 12% above the trailing 30-day average.
- The Prince Rupert pipeline now at 1,155, the lowest seen in the last 30 days, declined significantly by 13% (-169) overnight and 25% below the trailing 30 day-average.
- Thunder Bay volumes fell 9% (-180) overnight - now at 1,836 and 6% above the trailing 30-day average, with 80% of traffic moving on CP.

Hopper Car Rationing

- No hopper car rationing was reported for either CN or CP in week 10 and 11.

Loads Not Moving

- **The count of cars not moving for 48+ hours declined 11% (-212) overnight, marking lower counts on CN offset by higher counts on CP. Idle car counts currently at 1,709 and 14% below the trailing 30 day-average.**
- CN
 - **The count of idle cars for 48+ hours decreased 30% (-221) overnight - presently at 515 cars.**
 - The number of cars idle for 4+ days surged by 121% (+223) overnight - currently at 407 cars.
 - The count of cars not moving for 7+ days rose 11% (+8) overnight - now at 79 cars.
 - Vancouver represents 73% of all idle cars.
 - In total 40% of all idle cars are dwelling at origin locations.
- CP
 - **CP idle car counts for 48+ hours increased slightly by 1% (+9) overnight - now at 1,194 cars.**
 - The number of cars idle for 4+ days increased significantly by 103% (+313) overnight - now at 616 cars.
 - The number of cars idle for 7+ days rose 31% (+14) overnight - presently at 59 cars.

- Vancouver accounts for 35% of all idle cars.
- In total 71% of all idle cars are dwelling at origin locations.

Port Performance

- CN and CP reported a total of 1,592 cars unloaded at the three major ports, the highest seen in the last 30 days, now 34% above the trailing 30-day average. Two days in Week 12 unloads are tracking ahead of last week's pace by more than 350 unloads, marking higher unloads at Vancouver offset by reduced unloads at Prince Rupert and Thunder Bay.
- Vancouver
 - 1,144 unloads, the highest seen in the last 30 days, was reported by CN and CP at the Port of Vancouver; CN - 681 and CP - 463. Two days in Week 12 unloads are tracking ahead of last week's performance by 550 unloads.
 - There are 1,600 cars on site at Vancouver with more than 700 cars arriving at the port in the last 24 hours.
 - CN and CP have 1,400 cars in British Columbia en route to Vancouver, with more than 800 cars at Kamloops and west, and 50% of traffic moving on CN.
- Prince Rupert
 - Prince Rupert reported 166 unloads, now behind last week's unloads after two days by 100 unloads.
 - Loads on wheels now above 1,000 cars - currently at 1,155 cars.
 - There are more than 550 cars west of Jasper en route to Prince Rupert.
 - There are 6 cars on site at Prince Rupert with 1 car arriving at the port in the last 24 hours. Given the structure of the pipeline, there appears to be sufficient cars available to support unloads in the next few days.
- Thunder Bay
 - 282 unloads were reported at Thunder Bay yesterday. Two days in Week 12 unloads are tracking behind last week's pace by around 100 unloads.
 - There are 450 cars on site at Thunder Bay with 200 cars arriving at the port in the prior 24 hours.
 - There are more than 350 cars en route to Thunder Bay from Winnipeg and east. Cars on hand and those en route should support unloads in the next few days.

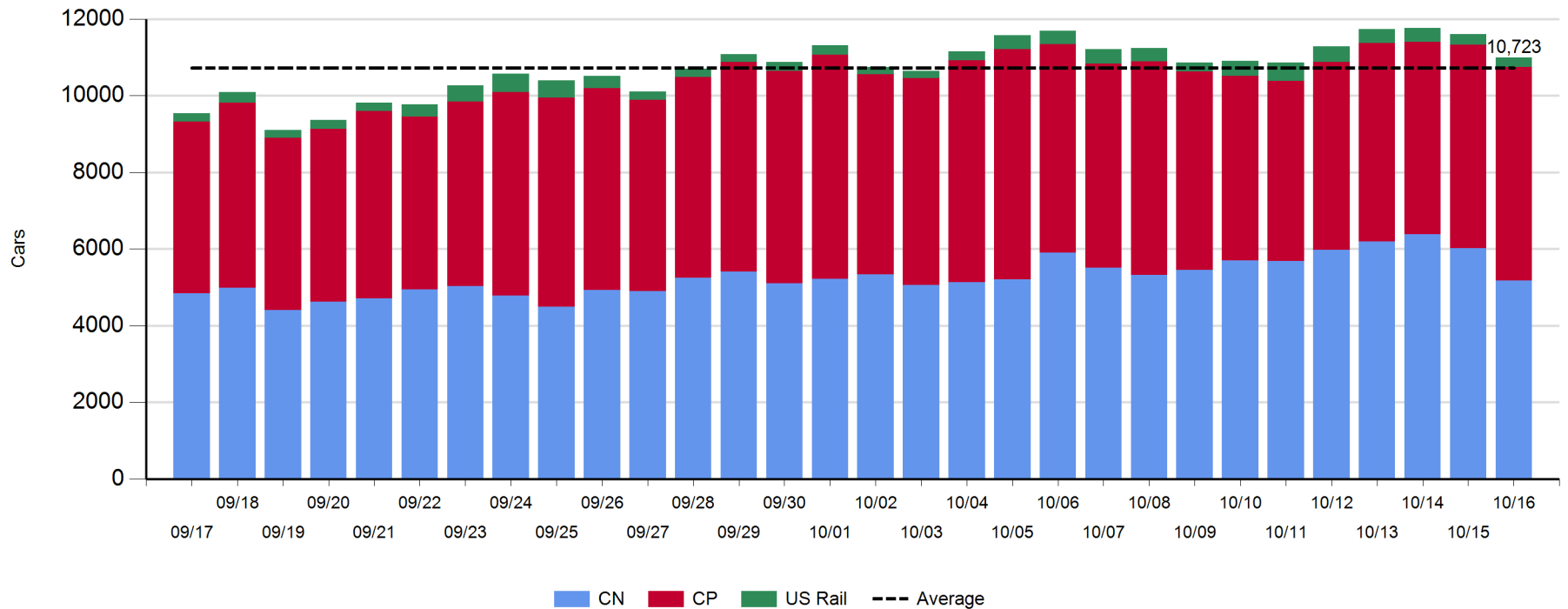
Daily Loads on Wheels - 10/16/2018

	E Canada	Prince Rupert	Thunder Bay	USA/MEX	Vancouver	Total
CN	170	1,148	364	246	3,241	5,169
CP	121	7	1,472	424	3,552	5,576
Short Line	6				20	26
US Rail				216		216
	297	1,155	1,836	886	6,813	10,987

Change in Loads on Wheels - Prior 24 Hours

	E Canada	Prince Rupert	Thunder Bay	USA/MEX	Vancouver	Total
CN	6	-169	-46	27	-661	-843
CP	2	0	-134	-59	447	256
Short Line	-10				10	0
US Rail				-25		-25
	-2	-169	-180	-57	-204	-612

Loads on Wheels - Prior 30 Days

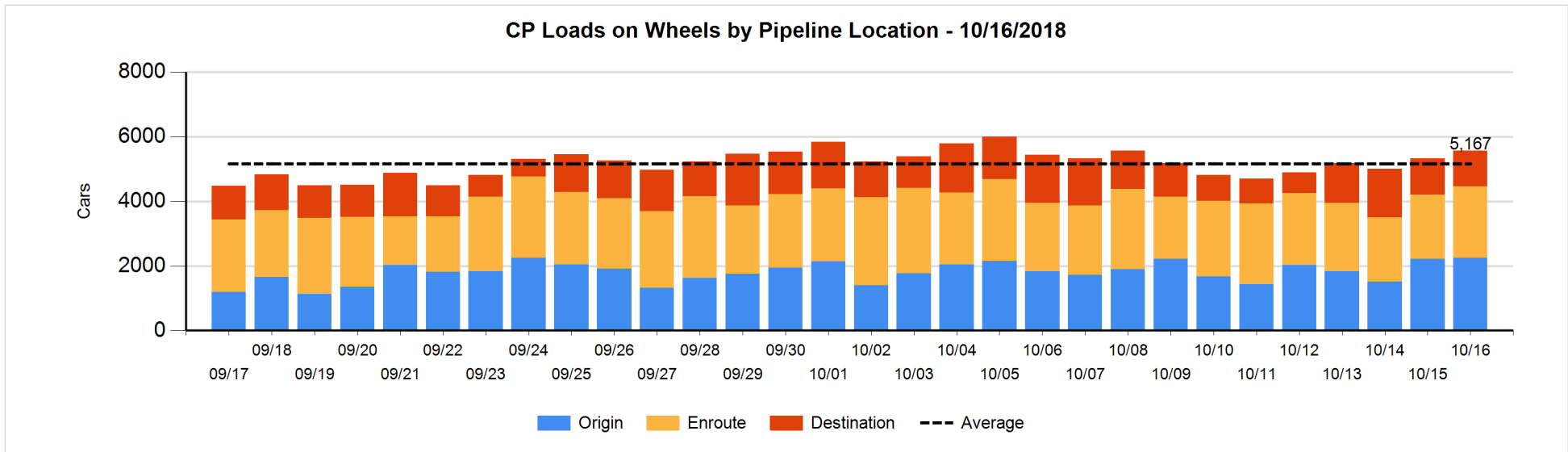
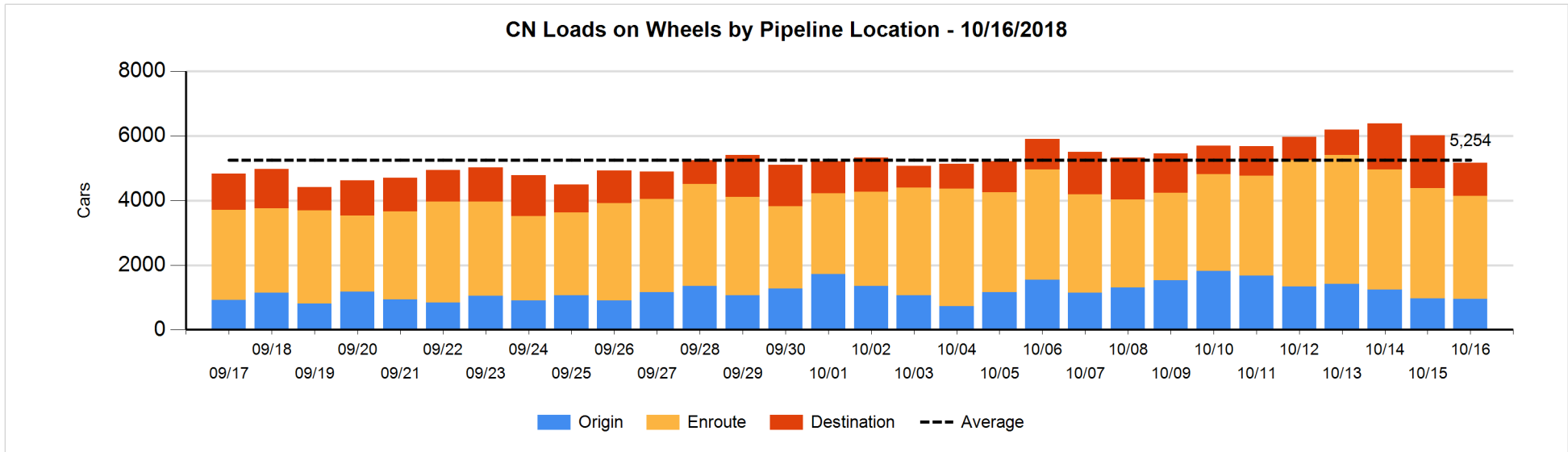


Daily Loads on Wheels By Pipeline Location - 10/16/2018

	E Canada	Prince Rupert	Thunder Bay	USA/MEX	Vancouver	Total
CN						
Origin	30	200	174	6	546	956
Enroute	121	942	121	202	1,793	3,179
Destination	19	6	69	38	902	1,034
	170	1,148	364	246	3,241	5,169
CP						
Origin	14		744	189	1,298	2,245
Enroute	68	7	344	231	1,573	2,223
Destination	39		384	4	681	1,108
	121	7	1,472	424	3,552	5,576
US Rail / Short Line						
Origin						
Enroute	1			102		103
Destination	5			114	20	139
	6			216	20	242

Change in Daily Loads on Wheels By Pipeline Location - Prior 24 Hours

	E Canada	Prince Rupert	Thunder Bay	USA/MEX	Vancouver	Total
CN						
Origin	28	-207	89	0	73	-17
Enroute	-6	207	-21	24	-435	-231
Destination	-16	-169	-114	3	-299	-595
	6	-169	-46	27	-661	-843
CP						
Origin	-1		-65	16	83	33
Enroute	-35	0	-92	-43	395	225
Destination	38		23	-32	-31	-2
	2	0	-134	-59	447	256
US Rail / Short Line						
Origin						
Enroute	0			-13		-13
Destination	-10			-12	10	-12
	-10			-25	10	-25

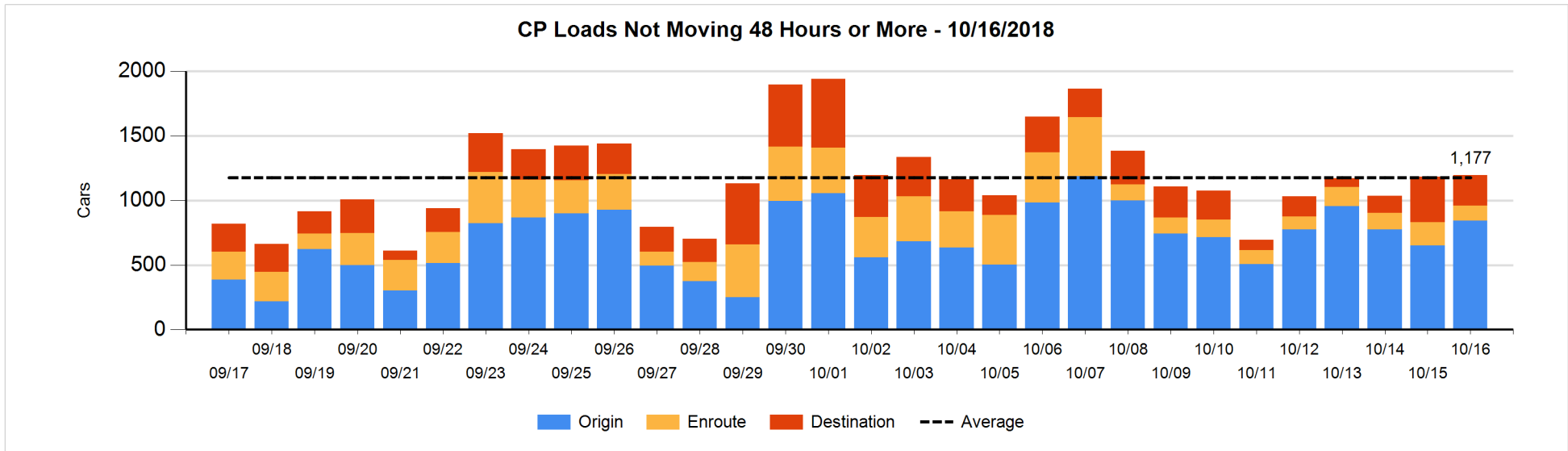
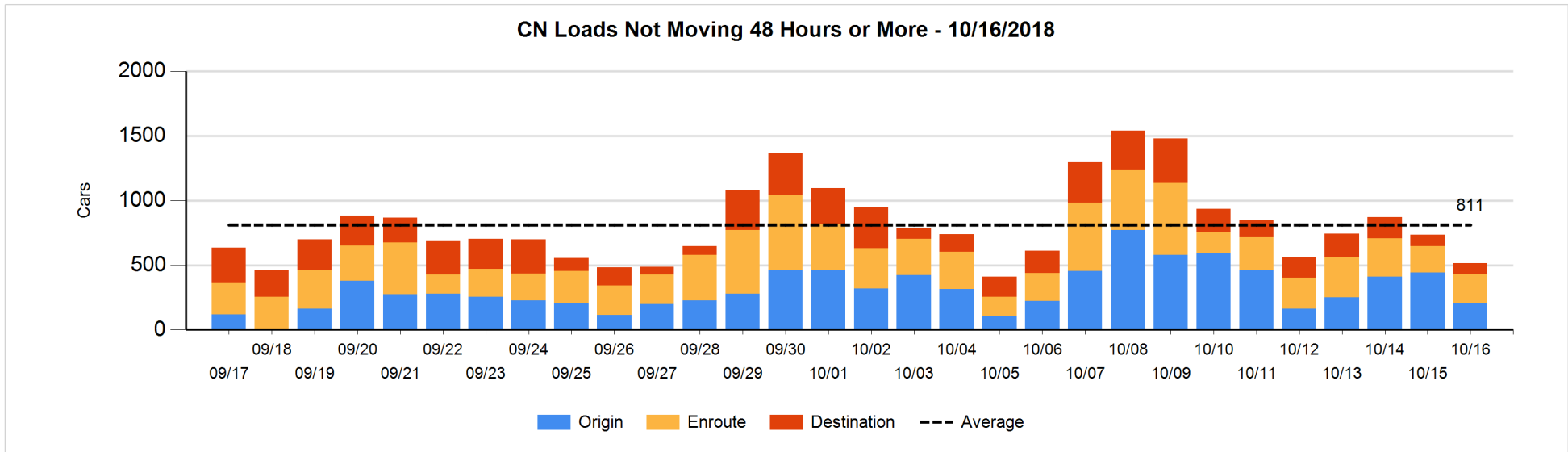


Loads Not Moving 48 Hours or More - 10/16/2018

	E Canada	Prince Rupert	Thunder Bay	USA/MEX	Vancouver	Total
CN						
Origin	2				205	207
Enroute	21	50		8	143	222
Destination	2	5	45	6	28	86
	25	55	45	14	376	515
CP						
Origin	7		372	122	341	842
Enroute	8		24	52	34	118
Destination			190	4	40	234
	15		586	178	415	1194
US Rail / Short Line						
Origin						
Enroute	1			20		21
Destination	5			59	7	71
	6			79	7	92

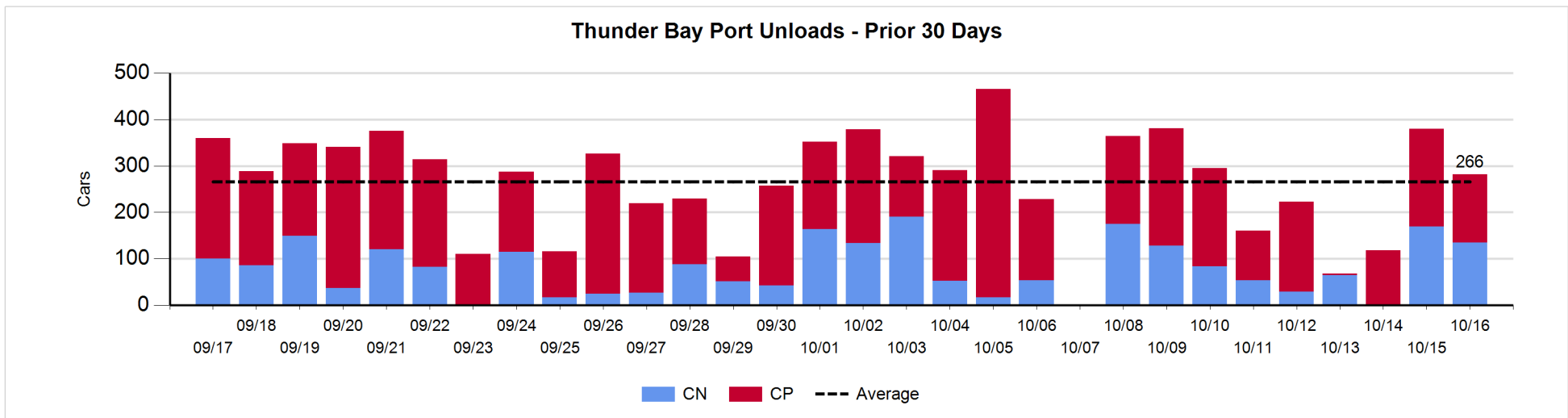
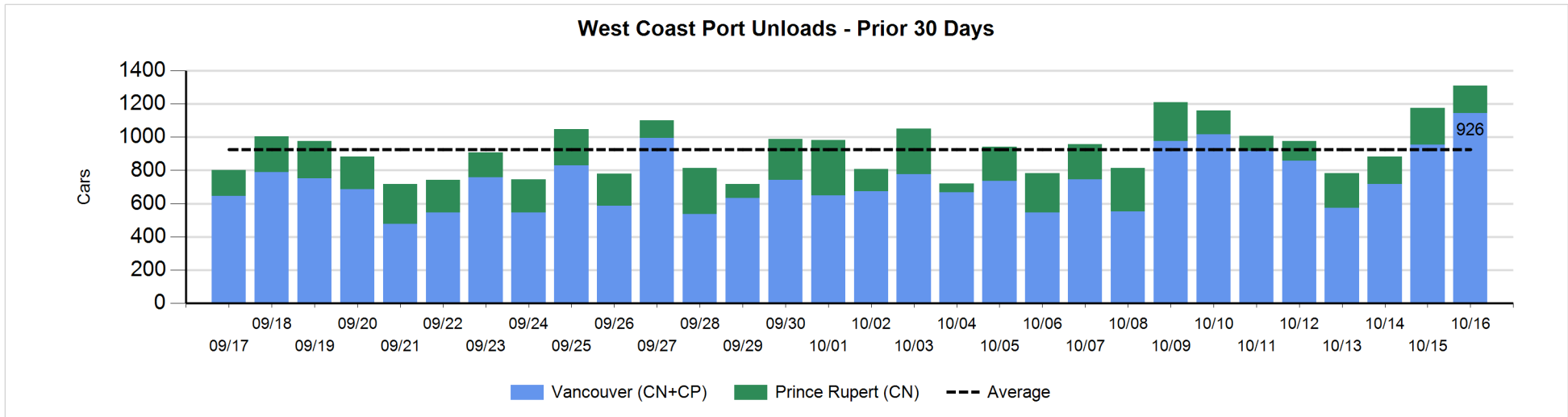
Change in Loads Not Moving 48 Hours or More - 10/16/2018

	E Canada	Prince Rupert	Thunder Bay	USA/MEX	Vancouver	Total
CN						
Origin	0	-99			-136	-235
Enroute	8	1		3	6	18
Destination	-24	3	38	-23	2	-4
	-16	-95	38	-20	-128	-221
CP						
Origin	-2		-22	-3	220	193
Enroute	4		-2	-64	-3	-65
Destination			-52	-16	-51	-119
	2		-76	-83	166	9
US Rail / Short Line						
Origin						
Enroute	0			-20		-20
Destination	0			6	1	7
	0			-14	1	-13



Port Unloads - 10/16/2018

	Prince Rupert	Vancouver	West Coast Total	Thunder Bay	Total
CN	166	681	847	135	982
CP		463	463	147	610
	166	1,144	1,310	282	1,592



Port Terminal Status

Vancouver

Daily Activity for 10/16/2018

	Cars Arrived	Cars Received in Interchange	Cars Delivered in Interchange	Cars Placed for Unloading	Loads on Wheels at Destination As of 10/16/2018
CN	490	20	1	576	902
CP	223	1	31	532	681
SRY		11			20

Port Unloads

	10/16	10/15	Week To Date	Last Week
CN	681	476	1,157	2,453
CP	463	478	941	3,158
SRY	1	9	10	97

Age Profile of Loaded Cars Waiting Placement for Unloading

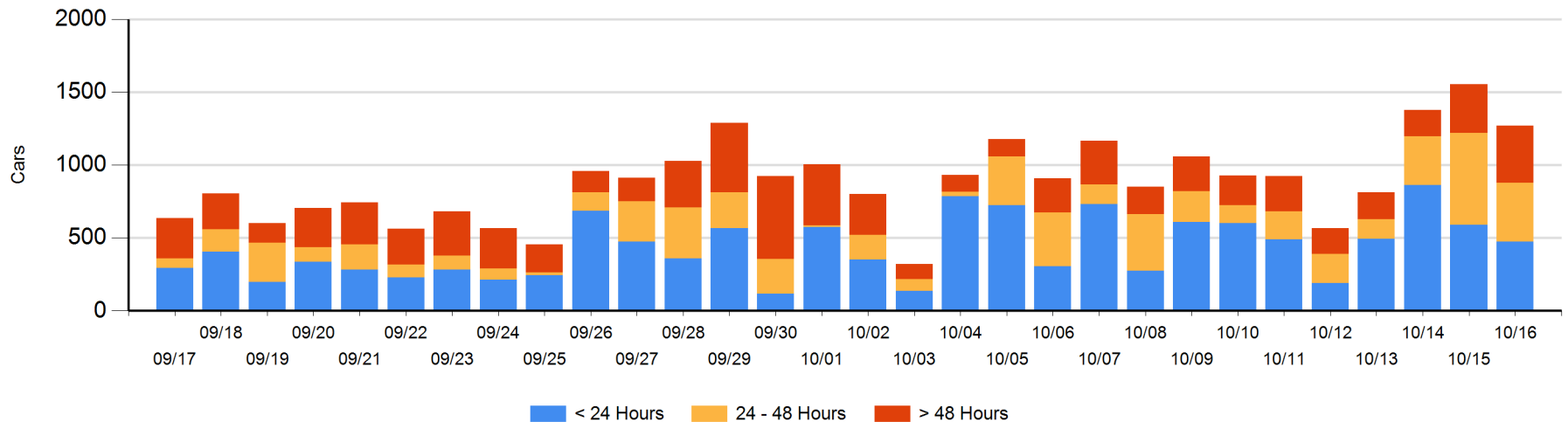
Today

	< 24 Hrs	24 - 48 Hrs	> 48-72 Hrs	> 72 Hrs	Total On Hand
CN	414	163	200	34	811
CP	62	238	96	62	458
SRY					0

Change in Last 24 Hours

	< 24 Hrs	24-48 Hrs	48 - 72 Hrs	> 72 Hrs
CN	143	-191	93	-3
CP	-255	-41	12	-43
SRY				

Loaded Cars on Hand Vancouver Waiting for Placement - Last 30 Days All Railways



Port Terminal Status

Prince Rupert

Daily Activity for 10/16/2018

	Cars Arrived	Cars Received in Interchange	Cars Delivered in Interchange	Cars Placed for Unloading	Loads on Wheels at Destination As of 10/16/2018
CN		1		2	6

Port Unloads

	10/16	10/15	Week To Date	Last Week
CN	166	222	388	1,223

Age Profile of Loaded Cars Waiting Placement for Unloading

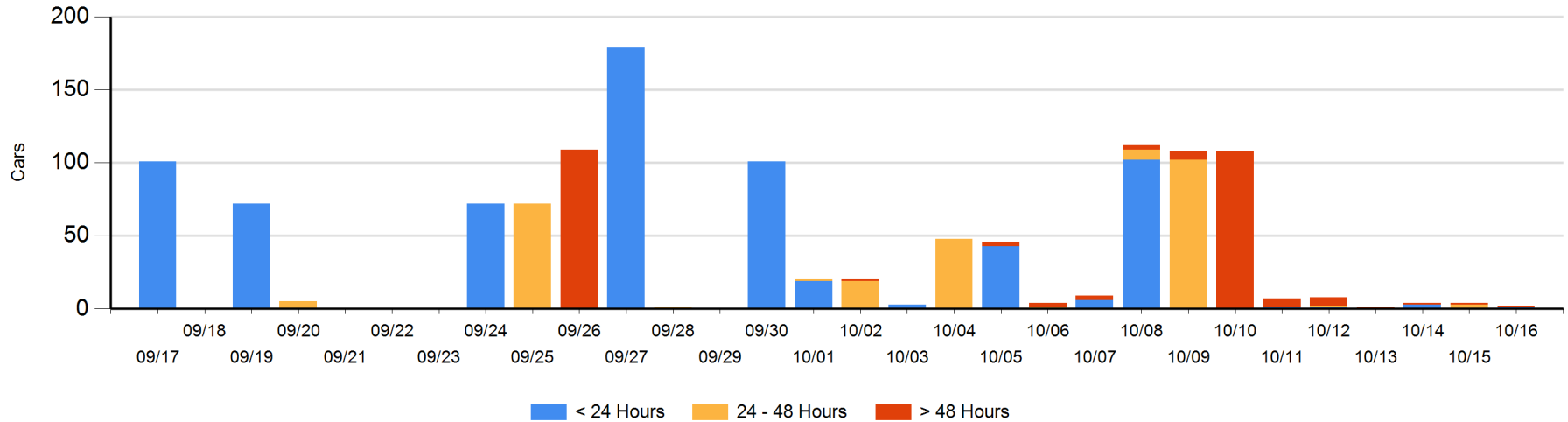
Today

	< 24 Hrs	24 - 48 Hrs	> 48-72 Hrs	> 72 Hrs	Total On Hand
CN	1			1	2

Change in Last 24 Hours

	< 24 Hrs	24-48 Hrs	48 - 72 Hrs	> 72 Hrs
CN	1	-3		0

Loaded Cars on Hand Prince Rupert Waiting for Placement - Last 30 Days All Railways



Port Terminal Status

Thunder Bay

Daily Activity for 10/16/2018

	Cars Arrived	Cars Received in Interchange	Cars Delivered in Interchange	Cars Placed for Unloading	Loads on Wheels at Destination As of 10/16/2018
CN	21			21	69
CP	170			152	384

Port Unloads

	10/16	10/15	Week To Date	Last Week
CN	135	169	304	536
CP	147	211	358	1,073

Age Profile of Loaded Cars Waiting Placement for Unloading

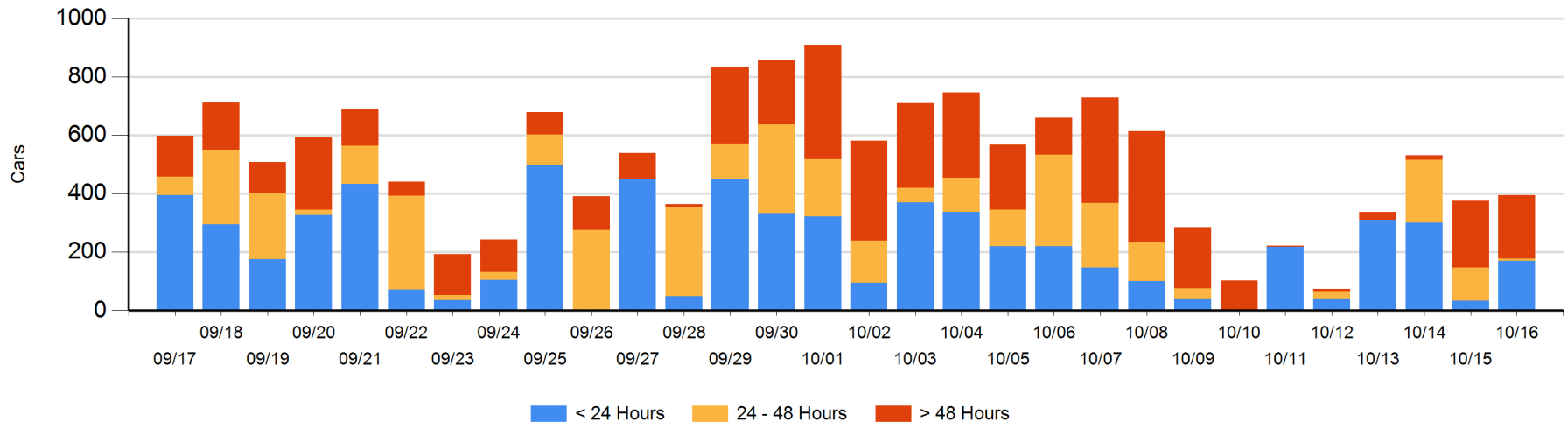
Today

	< 24 Hrs	24 - 48 Hrs	> 48-72 Hrs	> 72 Hrs	Total On Hand
CN		8	39		47
CP	170		18	159	347

Change in Last 24 Hours

	< 24 Hrs	24-48 Hrs	48 - 72 Hrs	> 72 Hrs
CN	-8	-31	39	
CP	144	-74	-196	144

Loaded Cars on Hand Thunder Bay Waiting for Placement - Last 30 Days All Railways



Measurement Definitions

Loads on Wheels	<p>Count of loaded rail cars including all rail cars that have been released loaded at origin and have not been reported by the railway as unloaded at destination.</p> <p>Counts include all rail cars (hopper cars and boxcars) moving within a pipeline.</p>
Loads Not Moving	<p>Loaded rail cars for which the railways have not reported a movement event for 48 hours or more whether the rail car is at origin, enroute or at destination.</p>
Port Unloads	<p>Count of rail cars reported by railways as unloaded at the western port destinations of Vancouver, Prince Rupert and Thunder Bay.</p> <p>Unload counts include all rail cars (hopper cars and boxcars) unloaded by all receivers including major port terminals, transloaders and other receivers.</p>
Cars Arrived	<p>Count of rail cars reported as arrived at the destination railway terminal.</p>
Cars Received in Interchange	<p>Count of rail cars received in interchange by each railway within a destination railway terminal. Interchange activity is tracked for the Vancouver and Thunder Bay pipelines as applicable.</p>
Cars Delivered in Interchange	<p>Count of rail cars delivered in interchange by each railway within a destination railway terminal. Interchange activity is tracked for the Vancouver and Thunder Bay pipelines as applicable.</p>
Cars Placed for Unloading	<p>Count of rail cars reported by the railways as placed loaded at the receiver's facility for unloading.</p>
Loads on Wheels at Destination	<p>Count of rail cars that remain under load within the destination railway terminal including rail cars that have been reported as placed for unloading but not yet reported as unloaded.</p>
Waiting Placement for Unloading	<p>Count of rail cars that have been reported as arrived at the destination railway terminal but not reported as placed for unloading by the railway.</p> <p>For the Ports of Vancouver, Prince Rupert and Thunder Bay the count of rail cars waiting placement for unloading is categorized by age – i.e. the elapsed time from arrival at destination to the current report date.</p>