

SPEED READ

- Loads on wheels decreased overnight, reflecting a decline in both CN and CP volumes. On a net basis, volumes fell due to lower traffic in the Thunder Bay and Vancouver corridors offset by higher volumes in the USA/MEX, E. Canada and Prince Rupert corridors.
- Network fluidity deteriorated overnight, led by a rise in idle car counts on both CN and CP by 17% (+89) and 21% (+250), respectively. The total count of cars for 4+ days on both railways decreased significantly by 46% (-470) overnight - presently at 558 cars.
- Three days in Week 12 unloads now ahead of prior week's performance by more than 450 unloads, marking improved week over week performance at Vancouver offset by lower unloads at Thunder Bay and Prince Rupert.

Loads on Wheels

- Loads on wheels declined 3% (-391) overnight and have now decreased for the third consecutive day, due to lower volumes on both CN and CP - combined total at 10,621 and 1% below the trailing 30-day average.
- On a net basis, the decline in loads on wheels reflects lower traffic in the Thunder Bay and Vancouver corridors offset by higher volumes in the USA/MEX, E. Canada and Prince Rupert corridors.
- CN volumes decreased for the third consecutive day, down 1% (-69) overnight, with reduced traffic in the Vancouver, Thunder Bay and USA/MEX corridors offset by higher traffic in the E. Canada and Prince Rupert corridors. System wide CN loads on wheels currently at 5,100 and 3% below the trailing 30-day average.
- CP volumes fell 5% (-302) overnight, driven by a decline in traffic across all corridors other than USA/MEX. CP system wide loads on wheels presently at 5,299 and 2% above the trailing 30-day average.
- Vancouver presently at 6,535, fell 4% (-278) overnight and have now decreased for three consecutive days, now 6% above the trailing 30-day average.
- The Prince Rupert pipeline presently at 1,183, rose 3% (+28) overnight and 22% below the trailing 30 day-average.
- Thunder Bay volumes declined significantly by 16% (-289) overnight - presently at 1,548 and 10% below the trailing 30-day average, with 78% of traffic moving on CP.

Hopper Car Rationing

- No hopper car rationing was reported for either CN or CP in week 10 and 11.

Loads Not Moving

- **The count of cars not moving for 48+ hours increased 20% (+339) overnight, reflecting higher counts on both CN and CP. Idle car counts currently at 2,053 and 2% above the trailing 30-day average.**
- CN
 - **The count of idle cars for 48+ hours increased 17% (+89) overnight - presently at 604 cars.**
 - The number of cars idle for 4+ days decreased 31% (-128) overnight - presently at 279 cars.
 - The count of cars not moving for 7+ days decreased 8% (-6) overnight - presently at 73 cars.
 - Vancouver represents 48% of all idle cars.
 - In total 51% of all idle cars are dwelling at origin locations.
- CP
 - **CP idle car counts for 48+ hours rose 21% (+250) overnight and have now increased for the third consecutive day - presently at 1,449 cars.**

- The number of cars idle for 4+ days declined significantly by 55% (-342) overnight - currently at 279 cars.
- The number of cars idle for 7+ days gained 14% (+9) overnight - presently at 67 cars.
- Vancouver accounts for 58% of all idle cars.
- In total 71% of all idle cars are dwelling at origin locations.

Port Performance

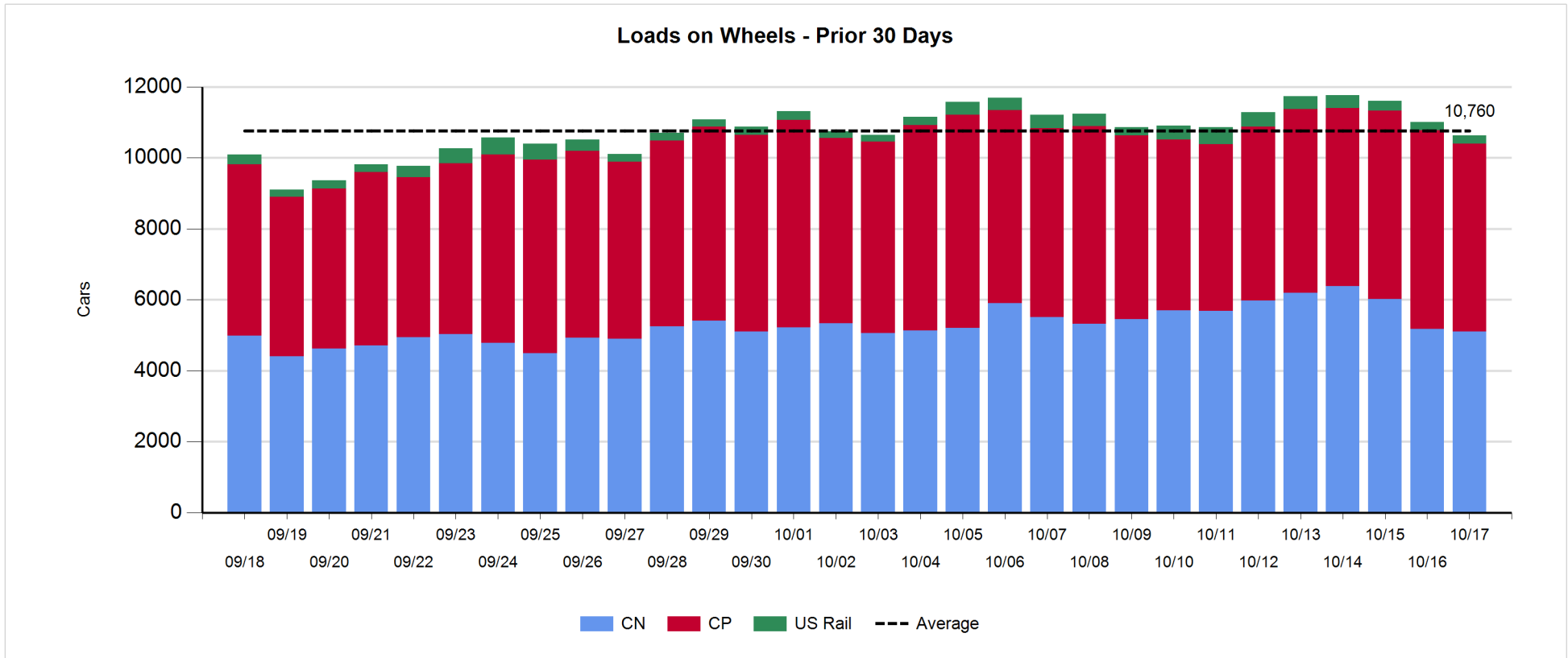
- CN and CP reported a total of 1,554 cars unloaded at the three major ports, now 29% above the trailing 30-day average. Three days in Week 12 unloads are tracking ahead of last week's pace by more than 450 unloads, marking higher unloads at Vancouver offset by lower unloads at Thunder Bay and Prince Rupert.
- Vancouver
 - 986 unloads reported by CN and CP at the Port of Vancouver; CN - 499 and CP - 487. Three days in Week 12 unloads are tracking ahead of last week's performance by more than 500 unloads.
 - There are 1,800 cars on site at Vancouver with fewer than 1,200 cars arriving at the port in the last 24 hours.
 - CN and CP have more than 1,600 cars in British Columbia en route to Vancouver, with 900 cars at Kamloops and west, and 51% of traffic moving on CN.
- Prince Rupert
 - Prince Rupert reported 227 unloads, now behind last week's unloads after three days by 24 unloads.
 - Loads on wheels now above 1,000 cars - presently at 1,183 cars.
 - There are more than 400 cars west of Jasper en route to Prince Rupert.
 - There are more than 50 cars on site at Prince Rupert with around 300 cars arriving at the port in the last 24 hours. Given the structure of the pipeline, there appears to be sufficient cars available to support unloads in the next few days.
- Thunder Bay
 - 341 unloads were reported at Thunder Bay yesterday. Three days in Week 12 unloads are tracking behind last week's pace by about 50 unloads.
 - There are more than 350 cars on site at Thunder Bay with 250 cars arriving at the port in the prior 24 hours.
 - There are around 400 cars en route to Thunder Bay from Winnipeg and east. Cars on hand and those en route should support unloads in the next few days.

Daily Loads on Wheels - 10/17/2018

| | E Canada | Prince Rupert | Thunder Bay | USA/MEX | Vancouver | Total |
|------------|----------|---------------|-------------|---------|-----------|--------|
| CN | 272 | 1,183 | 335 | 234 | 3,076 | 5,100 |
| CP | 96 | | 1,213 | 547 | 3,443 | 5,299 |
| Short Line | 20 | | | | 16 | 36 |
| US Rail | | | | 186 | | 186 |
| | 388 | 1,183 | 1,548 | 967 | 6,535 | 10,621 |

Change in Loads on Wheels - Prior 24 Hours

| | E Canada | Prince Rupert | Thunder Bay | USA/MEX | Vancouver | Total |
|------------|----------|---------------|-------------|---------|-----------|-------|
| CN | 102 | 35 | -29 | -12 | -165 | -69 |
| CP | -44 | -7 | -260 | 118 | -109 | -302 |
| Short Line | 14 | | | | -4 | 10 |
| US Rail | | | | -30 | | -30 |
| | 72 | 28 | -289 | 76 | -278 | -391 |

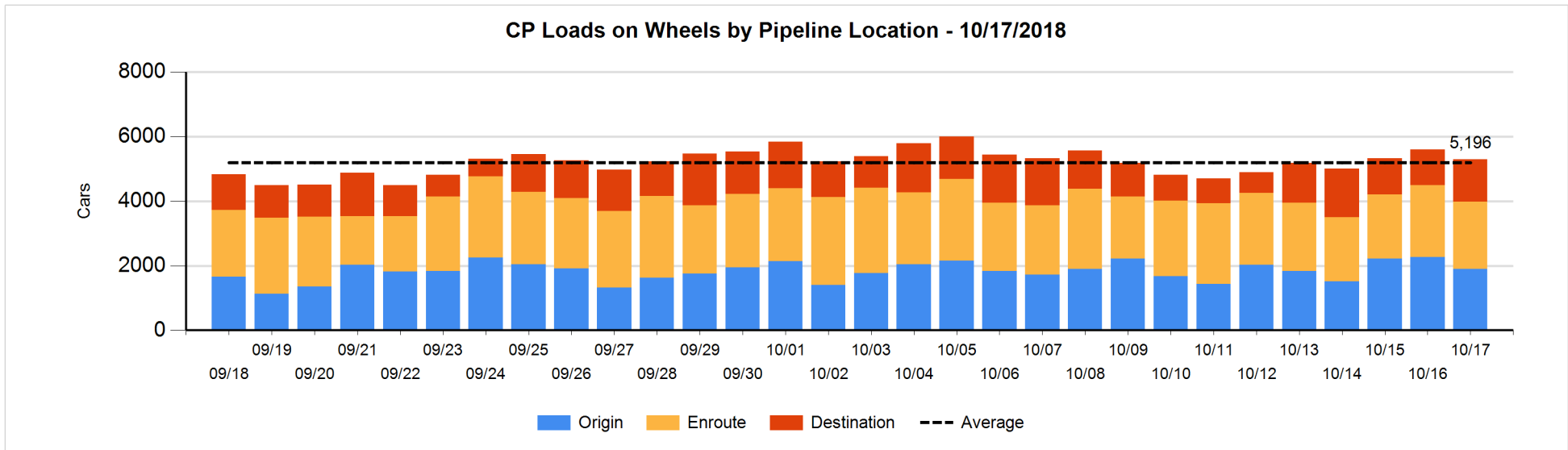
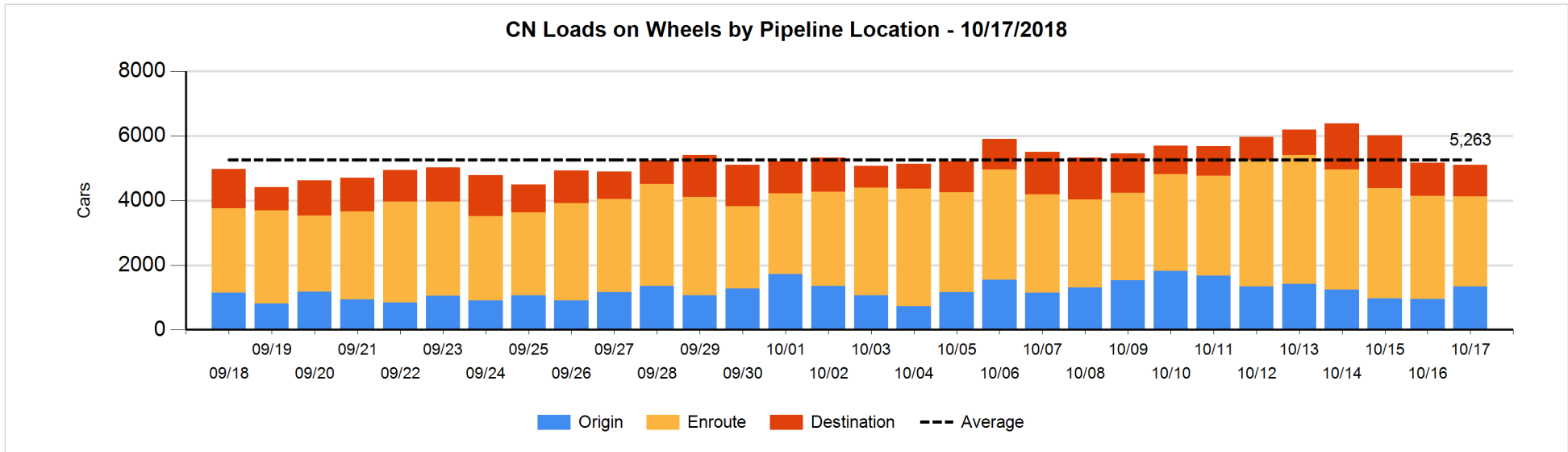


Daily Loads on Wheels By Pipeline Location - 10/17/2018

| | E Canada | Prince Rupert | Thunder Bay | USA/MEX | Vancouver | Total |
|----------------------|----------|---------------|-------------|---------|-----------|-------|
| CN | | | | | | |
| Origin | 29 | 455 | 13 | 4 | 831 | 1,332 |
| Enroute | 228 | 660 | 280 | 192 | 1,428 | 2,788 |
| Destination | 15 | 68 | 42 | 38 | 817 | 980 |
| | 272 | 1,183 | 335 | 234 | 3,076 | 5,100 |
| CP | | | | | | |
| Origin | 14 | | 428 | 193 | 1,270 | 1,905 |
| Enroute | 81 | | 463 | 315 | 1,211 | 2,070 |
| Destination | 1 | | 322 | 39 | 962 | 1,324 |
| | 96 | | 1,213 | 547 | 3,443 | 5,299 |
| US Rail / Short Line | | | | | | |
| Origin | | | | | | |
| Enroute | 15 | | | 104 | | 119 |
| Destination | 5 | | | 82 | 16 | 103 |
| | 20 | | | 186 | 16 | 222 |

Change in Daily Loads on Wheels By Pipeline Location - Prior 24 Hours

| | E Canada | Prince Rupert | Thunder Bay | USA/MEX | Vancouver | Total |
|----------------------|----------|---------------|-------------|---------|-----------|-------|
| CN | | | | | | |
| Origin | -1 | 255 | -161 | -2 | 285 | 376 |
| Enroute | 107 | -282 | 159 | -10 | -365 | -391 |
| Destination | -4 | 62 | -27 | 0 | -85 | -54 |
| | 102 | 35 | -29 | -12 | -165 | -69 |
| CP | | | | | | |
| Origin | -19 | | -316 | -1 | -28 | -364 |
| Enroute | 13 | -7 | 118 | 84 | -362 | -154 |
| Destination | -38 | | -62 | 35 | 281 | 216 |
| | -44 | -7 | -260 | 118 | -109 | -302 |
| US Rail / Short Line | | | | | | |
| Origin | | | | | | |
| Enroute | 14 | | | 2 | | 16 |
| Destination | 0 | | | -32 | -4 | -36 |
| | 14 | | | -30 | -4 | -20 |

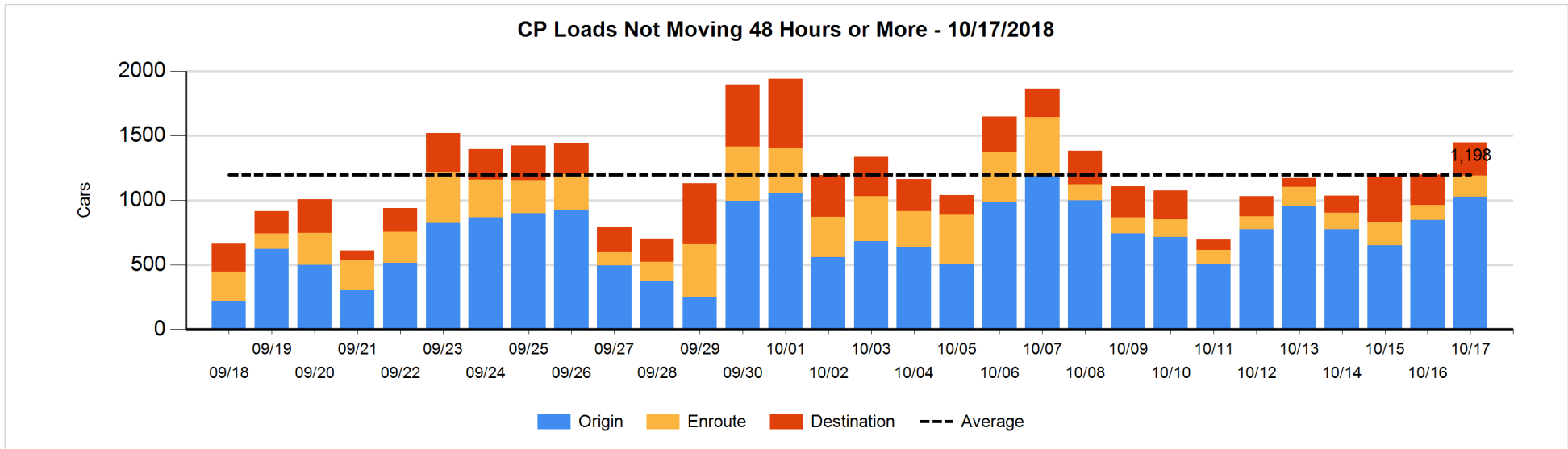
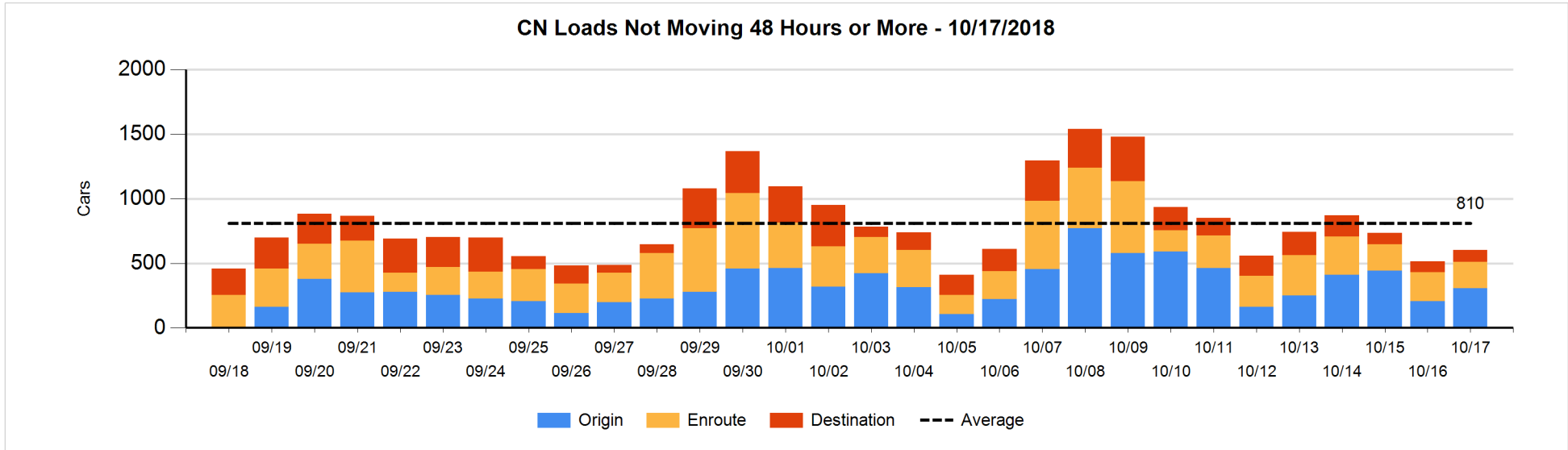


Loads Not Moving 48 Hours or More - 10/17/2018

| | E Canada | Prince Rupert | Thunder Bay | USA/MEX | Vancouver | Total |
|-----------------------------|----------|---------------|-------------|---------|-----------|-------|
| CN | | | | | | |
| Origin | 2 | 200 | | | 106 | 308 |
| Enroute | 8 | 64 | 1 | 5 | 124 | 202 |
| Destination | 4 | 7 | 23 | 3 | 57 | 94 |
| | 14 | 271 | 24 | 8 | 287 | 604 |
| CP | | | | | | |
| Origin | 12 | | 376 | 42 | 596 | 1026 |
| Enroute | 52 | | 29 | 53 | 33 | 167 |
| Destination | 1 | | 40 | 4 | 211 | 256 |
| | 65 | | 445 | 99 | 840 | 1449 |
| US Rail / Short Line | | | | | | |
| Origin | | | | | | |
| Enroute | 1 | | | 45 | | 46 |
| Destination | 5 | | | 51 | 5 | 61 |
| | 6 | | | 96 | 5 | 107 |

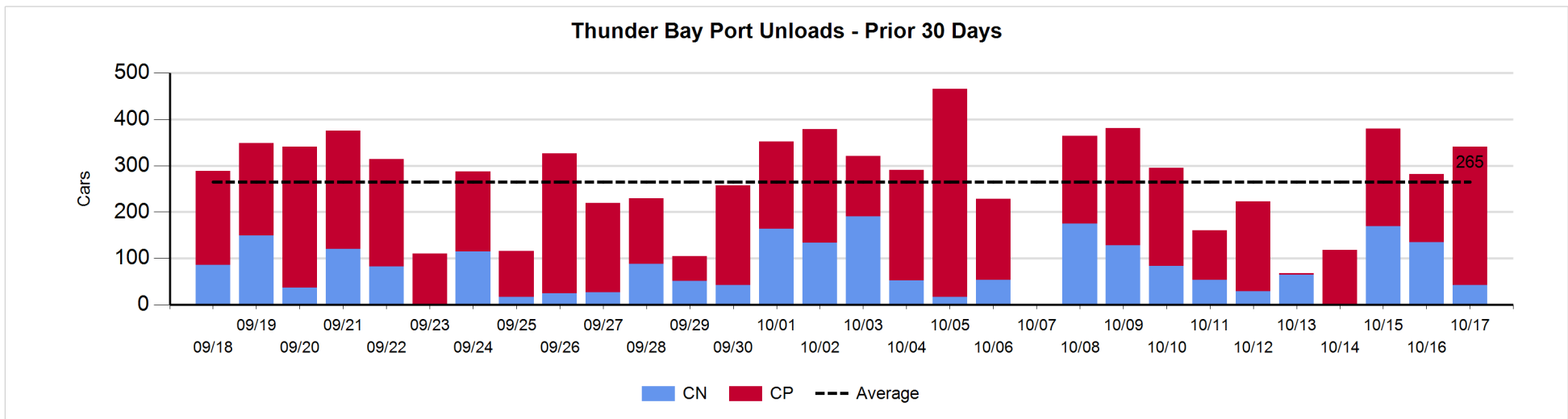
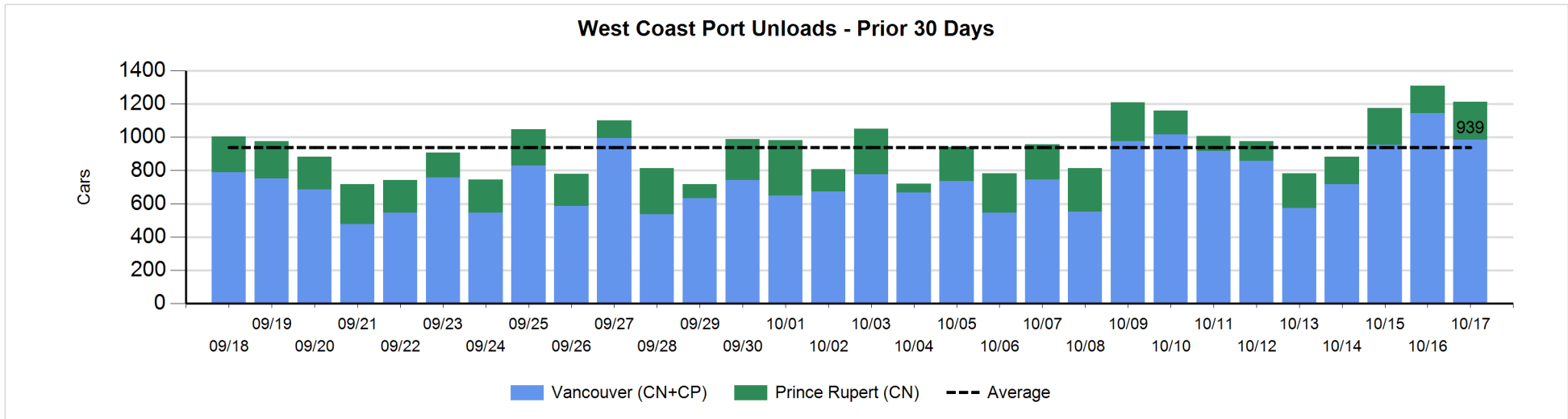
Change in Loads Not Moving 48 Hours or More - 10/17/2018

| | E Canada | Prince Rupert | Thunder Bay | USA/MEX | Vancouver | Total |
|-----------------------------|----------|---------------|-------------|---------|-----------|-------|
| CN | | | | | | |
| Origin | 0 | 200 | | | -99 | 101 |
| Enroute | -13 | 14 | 1 | -3 | -19 | -20 |
| Destination | 2 | 2 | -22 | -3 | 29 | 8 |
| | -11 | 216 | -21 | -6 | -89 | 89 |
| CP | | | | | | |
| Origin | 5 | | 4 | -85 | 255 | 179 |
| Enroute | 44 | | 5 | 1 | -1 | 49 |
| Destination | 1 | | -150 | 0 | 171 | 22 |
| | 50 | | -141 | -84 | 425 | 250 |
| US Rail / Short Line | | | | | | |
| Origin | | | | | | |
| Enroute | 0 | | | 25 | | 25 |
| Destination | 0 | | | -8 | -2 | -10 |
| | 0 | | | 17 | -2 | 15 |



Port Unloads - 10/17/2018

| | Prince Rupert | Vancouver | West Coast Total | Thunder Bay | Total |
|----|---------------|-----------|------------------|-------------|-------|
| CN | 227 | 499 | 726 | 42 | 768 |
| CP | | 487 | 487 | 299 | 786 |
| | 227 | 986 | 1,213 | 341 | 1,554 |



Port Terminal Status

Vancouver

Daily Activity for 10/17/2018

| | Cars Arrived | Cars Received in Interchange | Cars Delivered in Interchange | Cars Placed for Unloading | Loads on Wheels at Destination As of 10/17/2018 |
|-----|--------------|------------------------------|-------------------------------|---------------------------|---|
| CN | 347 | 122 | 192 | 389 | 817 |
| CP | 838 | 192 | 122 | 521 | 962 |
| SRY | 1 | | | 7 | 16 |

Port Unloads

| | 10/17 | 10/16 | Week To Date | Last Week |
|-----|-------|-------|--------------|-----------|
| CN | 499 | 681 | 1,656 | 2,453 |
| CP | 487 | 463 | 1,428 | 3,158 |
| SRY | 9 | 1 | 19 | 97 |

Age Profile of Loaded Cars Waiting Placement for Unloading

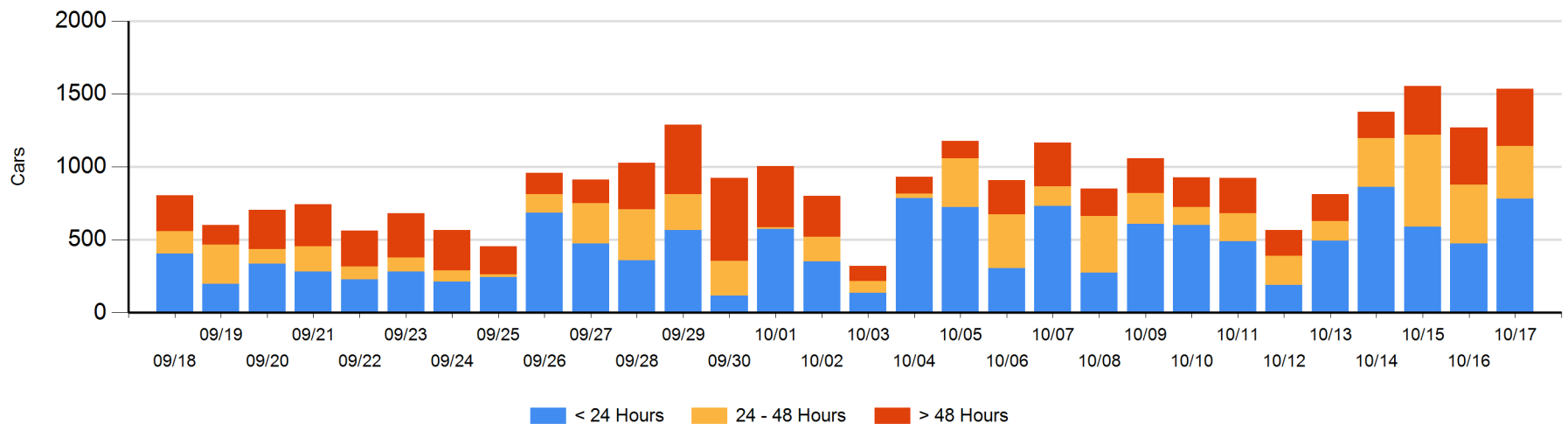
Today

| | < 24 Hrs | 24 - 48 Hrs | > 48-72 Hrs | > 72 Hrs | Total On Hand |
|-----|----------|-------------|-------------|----------|---------------|
| CN | 164 | 359 | 87 | 144 | 754 |
| CP | 616 | 3 | 75 | 86 | 780 |
| SRY | | | | | 0 |

Change in Last 24 Hours

| | < 24 Hrs | 24-48 Hrs | 48 - 72 Hrs | > 72 Hrs |
|-----|----------|-----------|-------------|----------|
| CN | -250 | 196 | -113 | 110 |
| CP | 554 | -235 | -21 | 24 |
| SRY | | | | |

Loaded Cars on Hand Vancouver Waiting for Placement - Last 30 Days All Railways



Port Terminal Status

Prince Rupert

Daily Activity for 10/17/2018

| | Cars Arrived | Cars Received in Interchange | Cars Delivered in Interchange | Cars Placed for Unloading | Loads on Wheels at Destination As of 10/17/2018 |
|----|--------------|------------------------------|-------------------------------|---------------------------|---|
| CN | 287 | | | 287 | 68 |

Port Unloads

| | 10/17 | 10/16 | Week To Date | Last Week |
|----|-------|-------|--------------|-----------|
| CN | 227 | 167 | 616 | 1,223 |

Age Profile of Loaded Cars Waiting Placement for Unloading

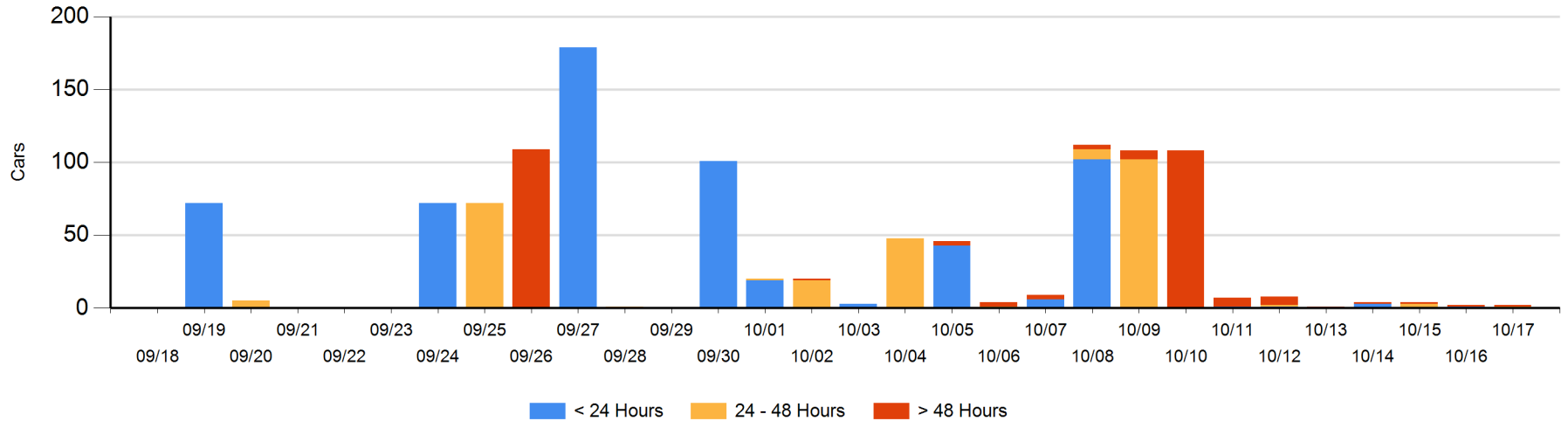
Today

| | < 24 Hrs | 24 - 48 Hrs | > 48-72 Hrs | > 72 Hrs | Total On Hand |
|----|----------|-------------|-------------|----------|---------------|
| CN | | 1 | | 1 | 2 |

Change in Last 24 Hours

| | < 24 Hrs | 24-48 Hrs | 48 - 72 Hrs | > 72 Hrs |
|----|----------|-----------|-------------|----------|
| CN | -1 | 1 | | 0 |

Loaded Cars on Hand Prince Rupert Waiting for Placement - Last 30 Days All Railways



Port Terminal Status

Thunder Bay

Daily Activity for 10/17/2018

| | Cars Arrived | Cars Received in Interchange | Cars Delivered in Interchange | Cars Placed for Unloading | Loads on Wheels at Destination As of 10/17/2018 |
|----|--------------|------------------------------|-------------------------------|---------------------------|---|
| CN | 15 | | | 26 | 42 |
| CP | 236 | | | 295 | 322 |

Port Unloads

| | 10/17 | 10/16 | Week To Date | Last Week |
|----|-------|-------|--------------|-----------|
| CN | 42 | 135 | 346 | 536 |
| CP | 299 | 147 | 657 | 1,073 |

Age Profile of Loaded Cars Waiting Placement for Unloading

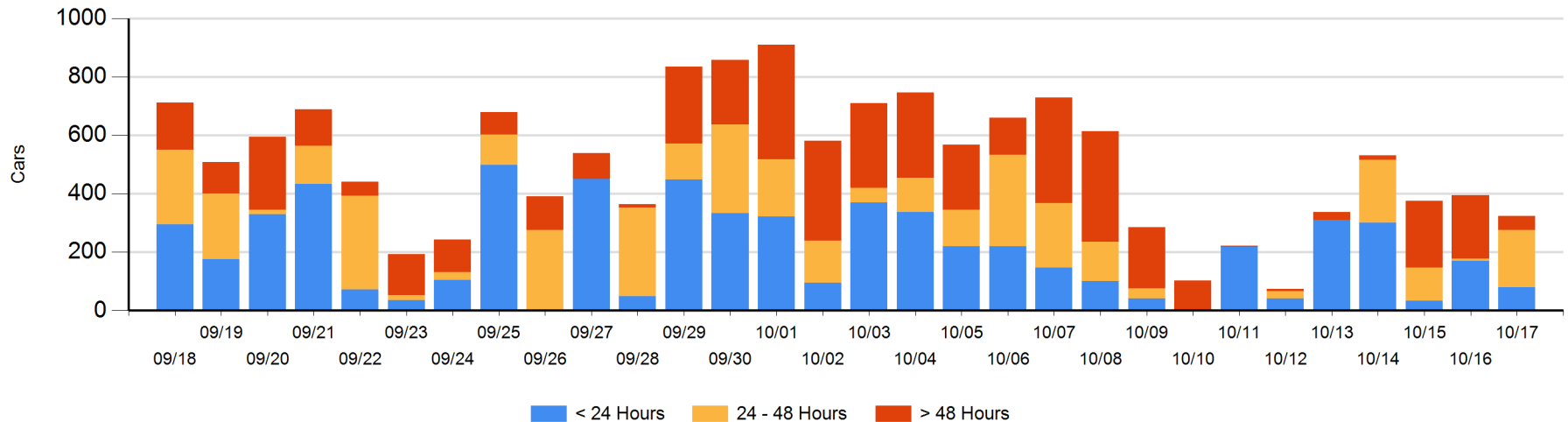
Today

| | < 24 Hrs | 24 - 48 Hrs | > 48-72 Hrs | > 72 Hrs | Total On Hand |
|----|----------|-------------|-------------|----------|---------------|
| CN | 15 | | 8 | 13 | 36 |
| CP | 64 | 196 | | 27 | 287 |

Change in Last 24 Hours

| | < 24 Hrs | 24-48 Hrs | 48 - 72 Hrs | > 72 Hrs |
|----|----------|-----------|-------------|----------|
| CN | 15 | -8 | -31 | 13 |
| CP | -106 | 196 | -18 | -132 |

Loaded Cars on Hand Thunder Bay Waiting for Placement - Last 30 Days All Railways



Measurement Definitions

| | |
|---------------------------------|---|
| Loads on Wheels | <p>Count of loaded rail cars including all rail cars that have been released loaded at origin and have not been reported by the railway as unloaded at destination.</p> <p>Counts include all rail cars (hopper cars and boxcars) moving within a pipeline.</p> |
| Loads Not Moving | <p>Loaded rail cars for which the railways have not reported a movement event for 48 hours or more whether the rail car is at origin, enroute or at destination.</p> |
| Port Unloads | <p>Count of rail cars reported by railways as unloaded at the western port destinations of Vancouver, Prince Rupert and Thunder Bay.</p> <p>Unload counts include all rail cars (hopper cars and boxcars) unloaded by all receivers including major port terminals, transloaders and other receivers.</p> |
| Cars Arrived | <p>Count of rail cars reported as arrived at the destination railway terminal.</p> |
| Cars Received in Interchange | <p>Count of rail cars received in interchange by each railway within a destination railway terminal. Interchange activity is tracked for the Vancouver and Thunder Bay pipelines as applicable.</p> |
| Cars Delivered in Interchange | <p>Count of rail cars delivered in interchange by each railway within a destination railway terminal. Interchange activity is tracked for the Vancouver and Thunder Bay pipelines as applicable.</p> |
| Cars Placed for Unloading | <p>Count of rail cars reported by the railways as placed loaded at the receiver's facility for unloading.</p> |
| Loads on Wheels at Destination | <p>Count of rail cars that remain under load within the destination railway terminal including rail cars that have been reported as placed for unloading but not yet reported as unloaded.</p> |
| Waiting Placement for Unloading | <p>Count of rail cars that have been reported as arrived at the destination railway terminal but not reported as placed for unloading by the railway.</p> <p>For the Ports of Vancouver, Prince Rupert and Thunder Bay the count of rail cars waiting placement for unloading is categorized by age – i.e. the elapsed time from arrival at destination to the current report date.</p> |