

SPEED READ

- Loads on wheels decreased marginally overnight, reflecting higher CP volumes offset by a decline in CN volumes. On a net basis, volumes fell due to lower volumes in the Vancouver, Thunder Bay and Prince Rupert corridors offset by higher traffic in the USA/MEX and E. Canada corridors.
- Network fluidity improved overnight, led by a decline in idle car counts on both CN and CP by 4% (-25) and 17% (-251), respectively. The total count of cars for 4+ days on both railways increased 5% (+26) overnight - presently at 584 cars.
- Four days in Week 12 unloads now ahead of prior week's performance by 550 unloads, reflecting an improvement in week over week performance at Vancouver and Prince Rupert offset by lower unloads at Thunder Bay.

Loads on Wheels

- Loads on wheels fell for the fourth consecutive day, down 2% (-166) overnight, due to higher traffic on CP offset by reduced traffic on CN - combined total at 10,457 and 3% below the trailing 30-day average.
- On a net basis, the decline in loads on wheels indicates lower volumes in the Vancouver, Thunder Bay and Prince Rupert corridors offset by higher traffic in the USA/MEX and E. Canada corridors.
- CN volumes fell 4% (-206) overnight and have now decreased for four consecutive days, with lower volumes across all corridors other than Thunder Bay and USA/MEX. System wide CN loads on wheels now at 4,894 and 7% below the trailing 30-day average.
- CP volumes increased slightly by 1% (+38) overnight, driven by an increase in traffic across all corridors other than Thunder Bay. CP system wide loads on wheels presently at 5,339 and 2% above the trailing 30-day average.
- Vancouver presently at 6,340, declined for the fourth consecutive day, down 3% (-197) overnight, now 3% above the trailing 30-day average.
- The Prince Rupert pipeline now at 1,177, was largely unchanged (-5) overnight and 21% below the trailing 30 day-average.
- Thunder Bay volumes decreased for the third consecutive day, down 3% (-48) overnight - now at 1,501 and 13% below the trailing 30-day average, with 78% of traffic moving on CP.

Hopper Car Rationing

- No hopper car rationing was reported for either CN or CP in week 10 and 11.

Loads Not Moving

- **The count of cars not moving for 48+ hours decreased 13% (-276) overnight, reflecting lower counts on both CN and CP. Idle car counts presently at 1,775 and 13% below the trailing 30 day-average.**
- CN
 - **The count of idle cars for 48+ hours fell 4% (-25) overnight - now at 577 cars.**
 - The number of cars idle for 4+ days declined 9% (-25) overnight - presently at 254 cars.
 - The count of cars not moving for 7+ days surged by 73% (+53) overnight - currently at 126 cars.
 - Vancouver represents 76% of all idle cars.
 - In total 42% of all idle cars are dwelling at origin locations.
- CP
 - **CP idle car counts for 48+ hours fell 17% (-251) overnight - now at 1,198 cars.**
 - The number of cars idle for 4+ days rose 18% (+51) overnight - now at 330 cars.

- The number of cars idle for 7+ days increased for the third consecutive day, up 76% (+51) overnight - presently at 118 cars.
- Vancouver accounts for 57% of all idle cars.
- In total 61% of all idle cars are dwelling at origin locations.

Port Performance

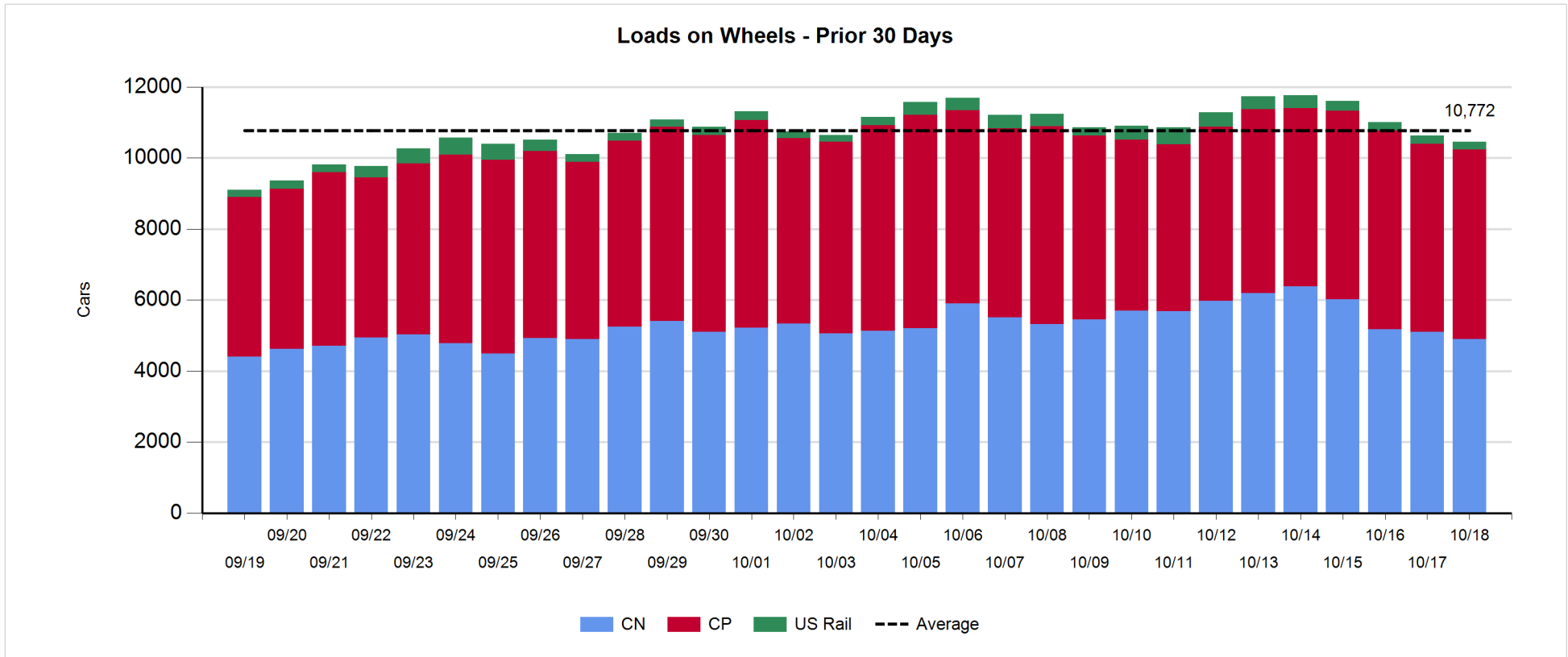
- CN and CP reported a total of 1,264 cars unloaded at the three major ports, now 5% above the trailing 30-day average. Four days in Week 12 unloads are tracking ahead of last week's pace by 550 unloads, reflecting higher unloads at Vancouver and Prince Rupert offset by lower unloads at Thunder Bay.
- Vancouver
 - 930 unloads reported by CN and CP at the Port of Vancouver; CN - 444 and CP - 486. Four days in Week 12 unloads are tracking ahead of last week's performance by more than 500 unloads.
 - There are more than 1,900 cars on site at Vancouver with 1,050 cars arriving at the port in the last 24 hours.
 - CN and CP have 850 cars in British Columbia en route to Vancouver, with about 600 cars at Kamloops and west, and 67% of traffic moving on CP.
- Prince Rupert
 - Prince Rupert reported 177 unloads, now ahead of last week's unloads after four days by more than 50 unloads.
 - Loads on wheels now above 1,000 cars - now at 1,177 cars.
 - There are about 200 cars west of Jasper en route to Prince Rupert.
 - There are more than 200 cars on site at Prince Rupert with around 350 cars arriving at the port in the last 24 hours. Given the structure of the pipeline, there appears to be sufficient cars available to support unloads in the next few days.
- Thunder Bay
 - 157 unloads were reported at Thunder Bay yesterday. Four days in Week 12 unloads are tracking behind last week's pace by 50 unloads.
 - There are 750 cars on site at Thunder Bay with 550 cars arriving at the port in the prior 24 hours.
 - There are 100 cars en route to Thunder Bay from Winnipeg and east. Cars on hand and those en route should support unloads for the balance of the week.

Daily Loads on Wheels - 10/18/2018

	E Canada	Prince Rupert	Thunder Bay	USA/MEX	Vancouver	Total
CN	269	1,177	335	240	2,873	4,894
CP	101		1,166	613	3,459	5,339
Short Line	29				8	37
US Rail				187		187
	399	1,177	1,501	1,040	6,340	10,457

Change in Loads on Wheels - Prior 24 Hours

	E Canada	Prince Rupert	Thunder Bay	USA/MEX	Vancouver	Total
CN	-3	-5	0	5	-203	-206
CP	5		-48	67	14	38
Short Line	9				-8	1
US Rail				1		1
	11	-5	-48	73	-197	-166

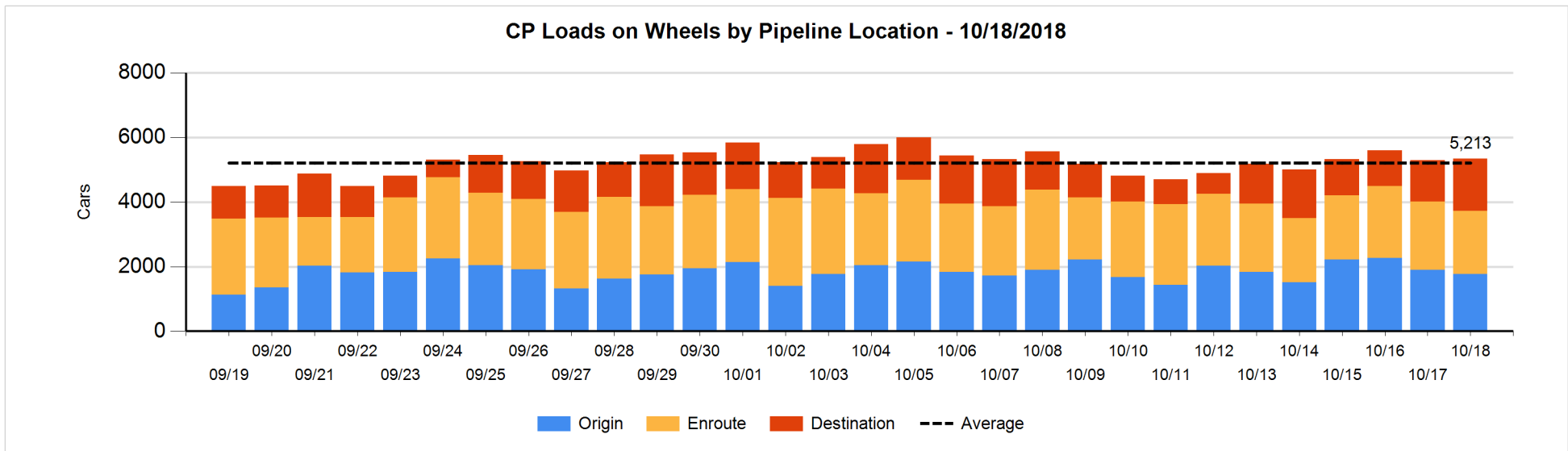
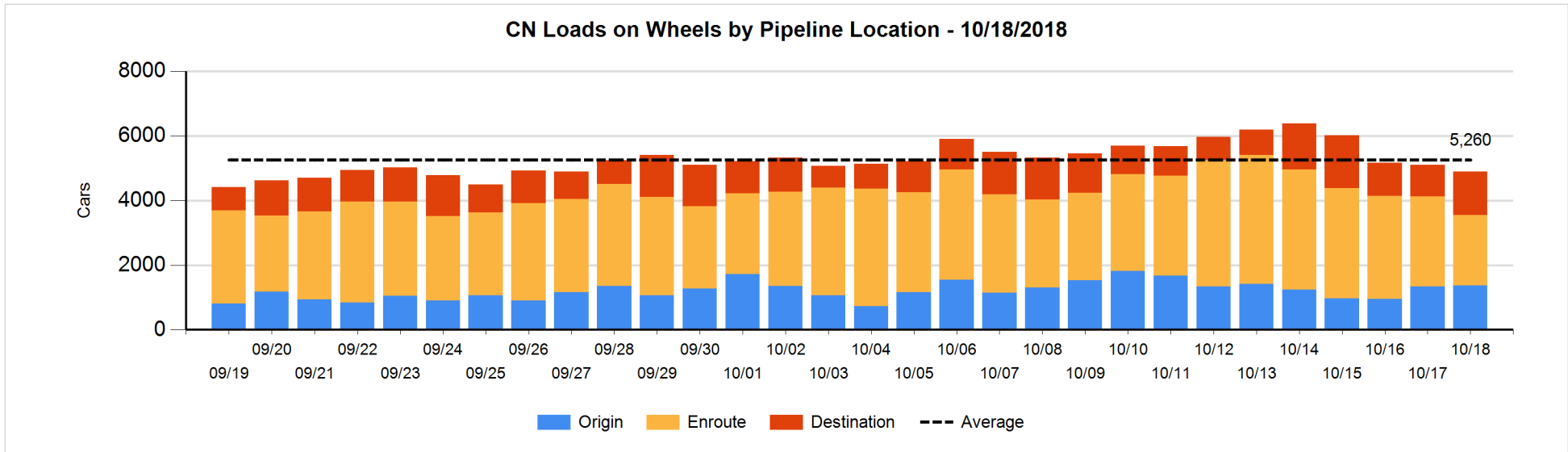


Daily Loads on Wheels By Pipeline Location - 10/18/2018

	E Canada	Prince Rupert	Thunder Bay	USA/MEX	Vancouver	Total
CN						
Origin	59	372	13	38	884	1,366
Enroute	178	588	90	168	1,162	2,186
Destination	32	217	232	34	827	1,342
	269	1,177	335	240	2,873	4,894
CP						
Origin	17		412	281	1,064	1,774
Enroute	83		237	312	1,315	1,947
Destination	1		517	20	1,080	1,618
	101		1,166	613	3,459	5,339
US Rail / Short Line						
Origin						
Enroute	2			107		109
Destination	27			80	8	115
	29			187	8	224

Change in Daily Loads on Wheels By Pipeline Location - Prior 24 Hours

	E Canada	Prince Rupert	Thunder Bay	USA/MEX	Vancouver	Total
CN						
Origin	30	-83	0	34	53	34
Enroute	-50	-74	-190	-25	-266	-605
Destination	17	152	190	-4	10	365
	-3	-5	0	5	-203	-206
CP						
Origin	3		-16	88	-206	-131
Enroute	2		-227	-34	102	-157
Destination	0		195	13	118	326
	5		-48	67	14	38
US Rail / Short Line						
Origin						
Enroute	-13			3		-10
Destination	22			-2	-8	12
	9			1	-8	2

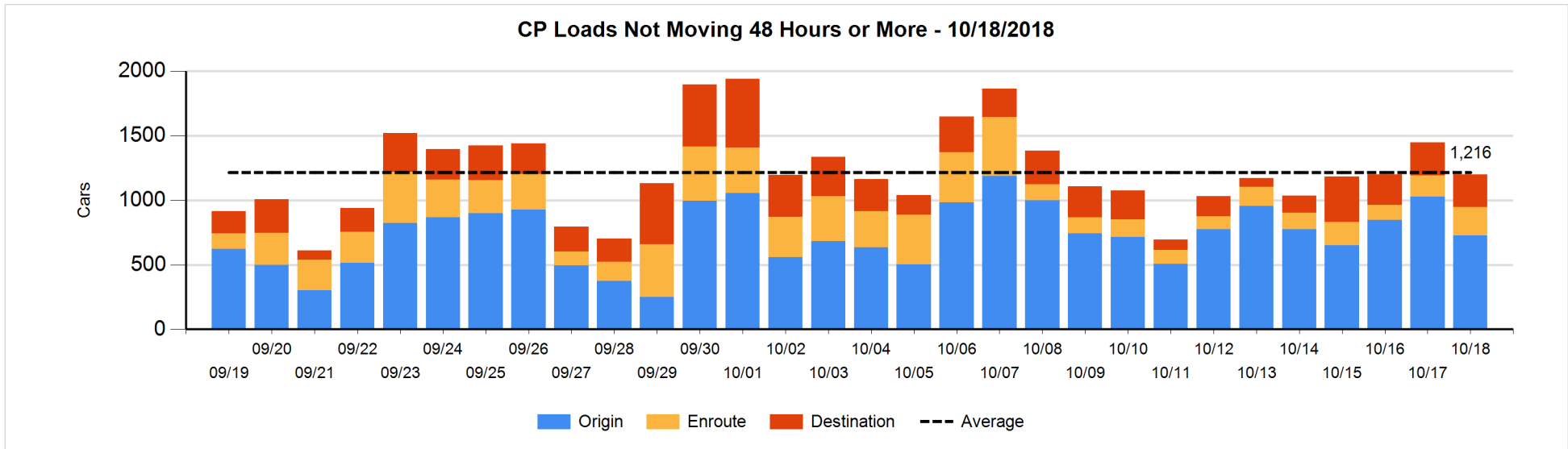
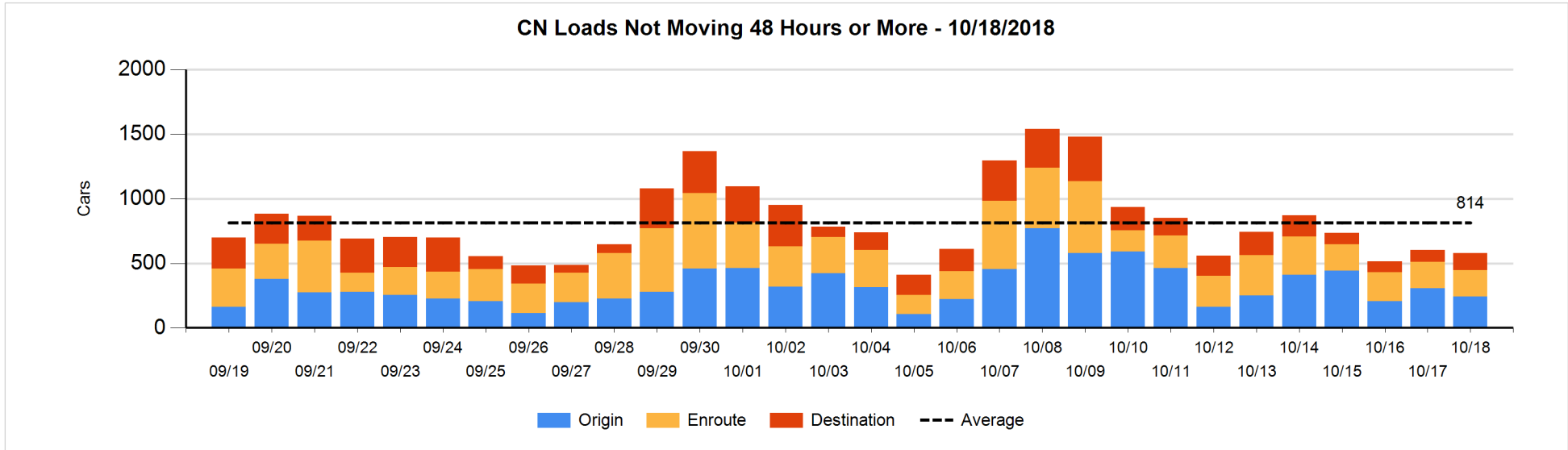


Loads Not Moving 48 Hours or More - 10/18/2018

	E Canada	Prince Rupert	Thunder Bay	USA/MEX	Vancouver	Total
CN						
Origin	27				214	241
Enroute	5	49	1	32	120	207
Destination	2	2	10	11	104	129
	34	51	11	43	438	577
CP						
Origin	12		264	49	400	725
Enroute	59		29	68	67	223
Destination	1		25	4	220	250
	72		318	121	687	1198
US Rail / Short Line						
Origin						
Enroute	1			38		39
Destination	5			63	8	76
	6			101	8	115

Change in Loads Not Moving 48 Hours or More - 10/18/2018

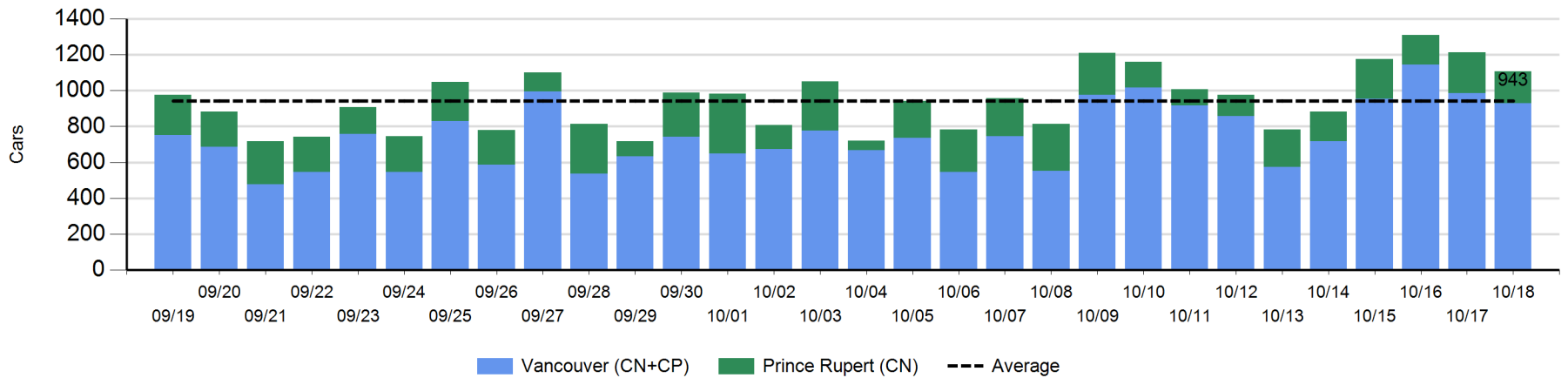
	E Canada	Prince Rupert	Thunder Bay	USA/MEX	Vancouver	Total
CN						
Origin	25	-200			108	-67
Enroute	-3	-15	0	27	-4	5
Destination	-2	-3	-13	8	47	37
	20	-218	-13	35	151	-25
CP						
Origin	0		-112	7	-196	-301
Enroute	7		0	15	34	56
Destination	0		-15	0	9	-6
	7		-127	22	-153	-251
US Rail / Short Line						
Origin						
Enroute	0			-7		-7
Destination	0			12	3	15
	0			5	3	8



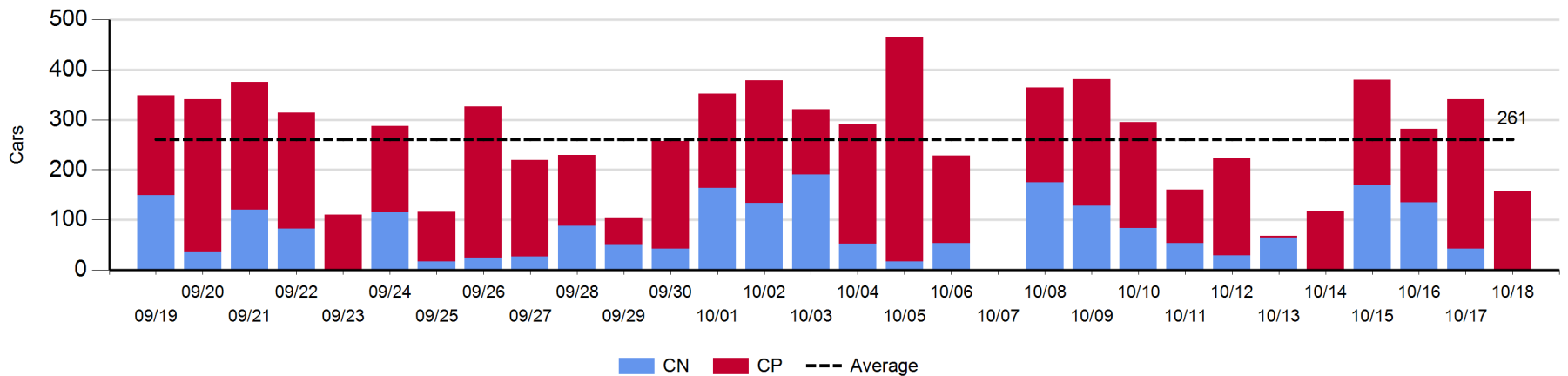
Port Unloads - 10/18/2018

	Prince Rupert	Vancouver	West Coast Total	Thunder Bay	Total
CN	177	444	621		621
CP		486	486	157	643
	177	930	1,107	157	1,264

West Coast Port Unloads - Prior 30 Days



Thunder Bay Port Unloads - Prior 30 Days



Port Terminal Status

Vancouver

Daily Activity for 10/18/2018

	Cars Arrived	Cars Received in Interchange	Cars Delivered in Interchange	Cars Placed for Unloading	Loads on Wheels at Destination As of 10/18/2018
CN	451	15	140	620	827
CP	604	140	16	470	1,080
SRY	1	1		7	8

Port Unloads

	10/18	10/17	Week To Date	Last Week
CN	444	499	2,100	2,453
CP	486	487	1,914	3,158
SRY	9	9	28	97

Age Profile of Loaded Cars Waiting Placement for Unloading

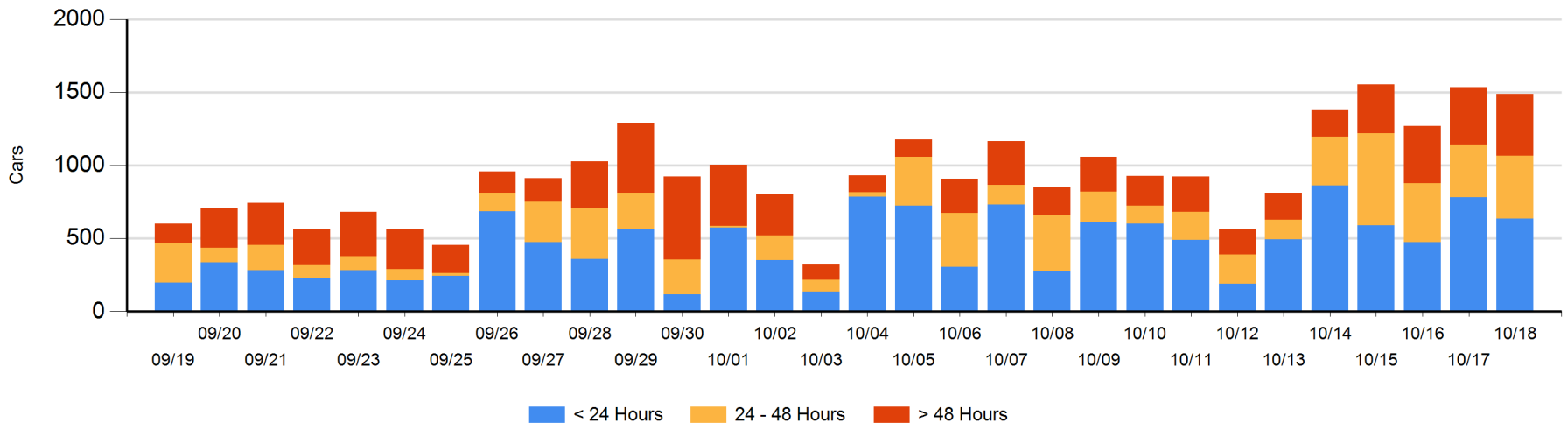
Today

	< 24 Hrs	24 - 48 Hrs	> 48-72 Hrs	> 72 Hrs	Total On Hand
CN	254	48	100	192	594
CP	382	382	2	130	896
SRY					0

Change in Last 24 Hours

	< 24 Hrs	24-48 Hrs	48 - 72 Hrs	> 72 Hrs
CN	90	-311	13	48
CP	-234	379	-73	44
SRY				

Loaded Cars on Hand Vancouver Waiting for Placement - Last 30 Days All Railways



Port Terminal Status

Prince Rupert

Daily Activity for 10/18/2018

	Cars Arrived	Cars Received in Interchange	Cars Delivered in Interchange	Cars Placed for Unloading	Loads on Wheels at Destination As of 10/18/2018
CN		334		330	217

Port Unloads

	10/18	10/17	Week To Date	Last Week
CN	177	228	794	1,223

Age Profile of Loaded Cars Waiting Placement for Unloading

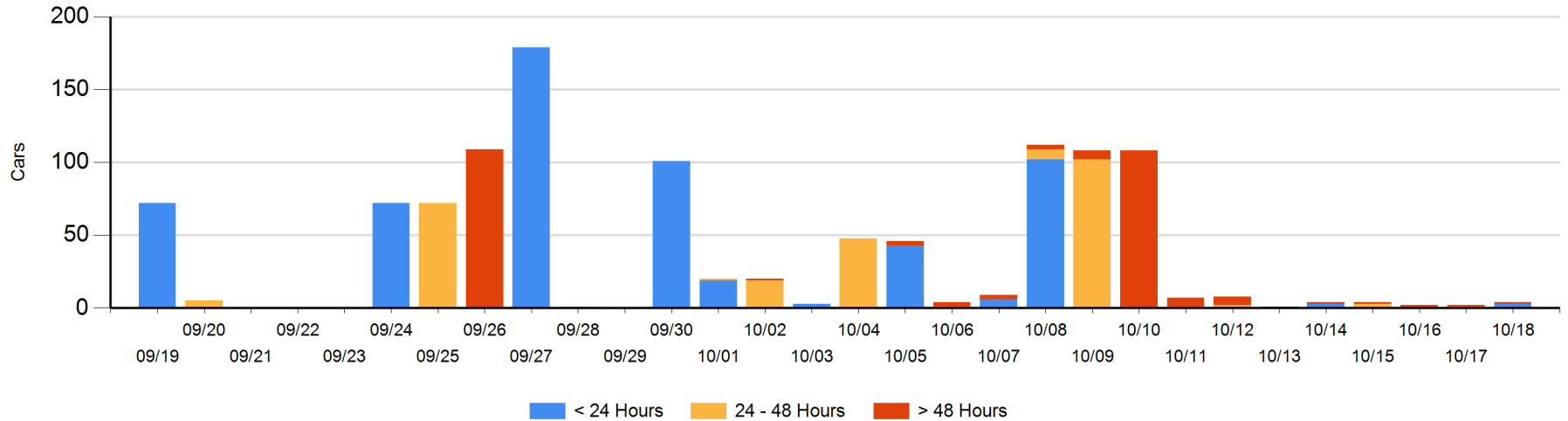
Today

	< 24 Hrs	24 - 48 Hrs	> 48-72 Hrs	> 72 Hrs	Total On Hand
CN	3			1	4

Change in Last 24 Hours

	< 24 Hrs	24-48 Hrs	48 - 72 Hrs	> 72 Hrs
CN	3	-1		0

Loaded Cars on Hand Prince Rupert Waiting for Placement - Last 30 Days All Railways



Port Terminal Status

Thunder Bay

Daily Activity for 10/18/2018

	Cars Arrived	Cars Received in Interchange	Cars Delivered in Interchange	Cars Placed for Unloading	Loads on Wheels at Destination As of 10/18/2018
CN	190			17	232
CP	353			254	517

Port Unloads

	10/18	10/17	Week To Date	Last Week
CN		42	346	536
CP	157	299	814	1,073

Age Profile of Loaded Cars Waiting Placement for Unloading

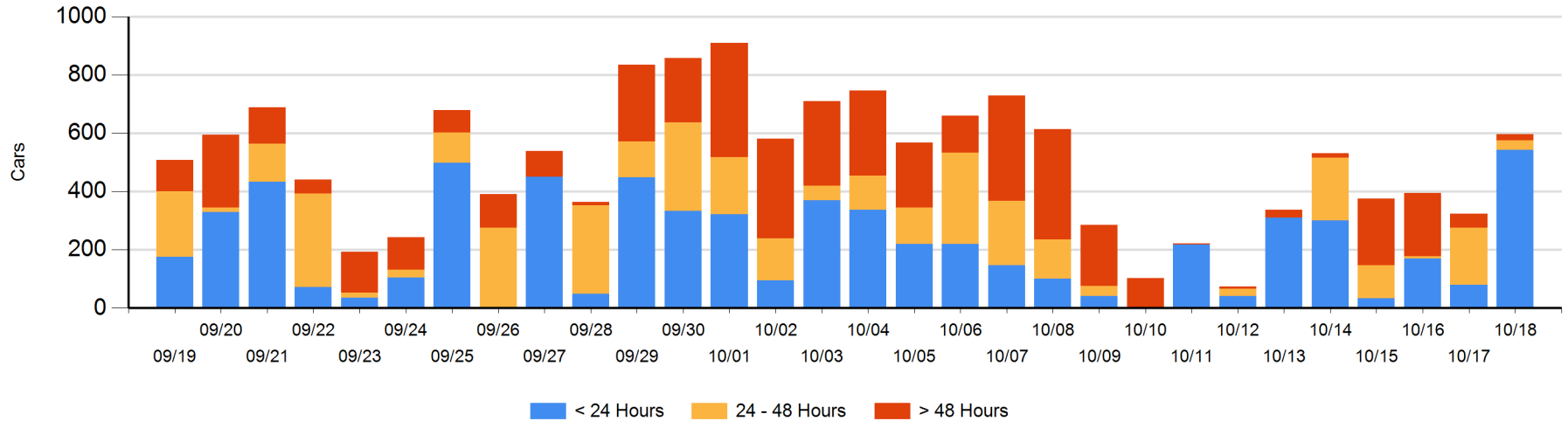
Today

	< 24 Hrs	24 - 48 Hrs	> 48-72 Hrs	> 72 Hrs	Total On Hand
CN	190	15		4	209
CP	352	18	9	9	388

Change in Last 24 Hours

	< 24 Hrs	24-48 Hrs	48 - 72 Hrs	> 72 Hrs
CN	175	15	-8	-9
CP	288	-178	9	-18

Loaded Cars on Hand Thunder Bay Waiting for Placement - Last 30 Days All Railways



Measurement Definitions

Loads on Wheels	<p>Count of loaded rail cars including all rail cars that have been released loaded at origin and have not been reported by the railway as unloaded at destination.</p> <p>Counts include all rail cars (hopper cars and boxcars) moving within a pipeline.</p>
Loads Not Moving	<p>Loaded rail cars for which the railways have not reported a movement event for 48 hours or more whether the rail car is at origin, enroute or at destination.</p>
Port Unloads	<p>Count of rail cars reported by railways as unloaded at the western port destinations of Vancouver, Prince Rupert and Thunder Bay.</p> <p>Unload counts include all rail cars (hopper cars and boxcars) unloaded by all receivers including major port terminals, transloaders and other receivers.</p>
Cars Arrived	<p>Count of rail cars reported as arrived at the destination railway terminal.</p>
Cars Received in Interchange	<p>Count of rail cars received in interchange by each railway within a destination railway terminal. Interchange activity is tracked for the Vancouver and Thunder Bay pipelines as applicable.</p>
Cars Delivered in Interchange	<p>Count of rail cars delivered in interchange by each railway within a destination railway terminal. Interchange activity is tracked for the Vancouver and Thunder Bay pipelines as applicable.</p>
Cars Placed for Unloading	<p>Count of rail cars reported by the railways as placed loaded at the receiver's facility for unloading.</p>
Loads on Wheels at Destination	<p>Count of rail cars that remain under load within the destination railway terminal including rail cars that have been reported as placed for unloading but not yet reported as unloaded.</p>
Waiting Placement for Unloading	<p>Count of rail cars that have been reported as arrived at the destination railway terminal but not reported as placed for unloading by the railway.</p> <p>For the Ports of Vancouver, Prince Rupert and Thunder Bay the count of rail cars waiting placement for unloading is categorized by age – i.e. the elapsed time from arrival at destination to the current report date.</p>