

SPEED READ

- Loads on wheels decreased overnight, marking lower CP volumes while CN volumes remained unchanged. On a net basis, volumes fell due to lower volumes across all corridors - Vancouver, Thunder Bay, Prince Rupert, USA/MEX and E. Canada.
- Network fluidity deteriorated overnight, led by an increase in idle car counts on both CN and CP by 3% (+17) and 15% (+208), respectively. The total count of cars for 4+ days on both railways gained 35% (+172) overnight - currently at 662 cars.
- Week 12 unloads concluded ahead of prior week's performance by more than 1,350 unloads, reflecting an improvement in week over week performance across all three major ports - Vancouver, Thunder Bay and Prince Rupert.

Loads on Wheels

- Loads on wheels fell 6% (-682) overnight, due to reduced volumes on CP while CN volumes stayed unchanged - combined total at 10,770 and 1% below the trailing 30-day average.
- On a net basis, the decline in loads on wheels indicates lower volumes across all corridors - Vancouver, Thunder Bay, Prince Rupert, USA/MEX and E. Canada.
- CN volumes were largely unchanged (+8) overnight, with higher traffic in the Vancouver corridor offset by lower volumes in the Prince Rupert, USA/MEX, Thunder Bay and E. Canada corridors. System wide CN loads on wheels now at 5,246 and 1% below the trailing 30-day average.
- CP volumes decreased significantly by 12% (-691) overnight, driven by a decline in traffic across all corridors - Vancouver, Thunder Bay, USA/MEX and E. Canada. CP system wide loads on wheels currently at 5,271 and 1% below the trailing 30-day average.
- Vancouver now at 6,489, decreased 7% (-459) overnight, now 2% above the trailing 30-day average.
- The Prince Rupert pipeline currently at 1,587, declined 7% (-124) overnight and 5% above the trailing 30-day average.
- Thunder Bay volumes declined 4% (-49) overnight and have now decreased for the third consecutive day - now at 1,284, the lowest seen in the last 30 days, and 25% below the trailing 30-day average, with 83% of traffic moving on CP.

Hopper Car Rationing

- No hopper car rationing was reported for either CN or CP in week 11.

Loads Not Moving

- **The count of cars not moving for 48+ hours increased 11% (+225) overnight and have now increased for three consecutive days, marking higher counts on both CN and CP. Idle car counts now at 2,227 and 8% above the trailing 30-day average.**
- CN
 - **The count of idle cars for 48+ hours increased 3% (+17) overnight - presently at 621 cars.**
 - The number of cars idle for 4+ days fell 2% (-3) overnight - presently at 172 cars.
 - The count of cars not moving for 7+ days was unchanged (0) overnight - currently at 74 cars.
 - Vancouver represents 54% of all idle cars.
 - In total 43% of all idle cars are dwelling at origin locations.
- CP
 - **CP idle car counts for 48+ hours increased 15% (+208) overnight - presently at 1,606 cars.**
 - The number of cars idle for 4+ days increased significantly by 56% (+175) overnight - now at 490 cars.

- The number of cars idle for 7+ days rose 16% (+24) overnight - currently at 173 cars.
- Vancouver accounts for 66% of all idle cars.
- In total 64% of all idle cars are dwelling at origin locations.

Port Performance

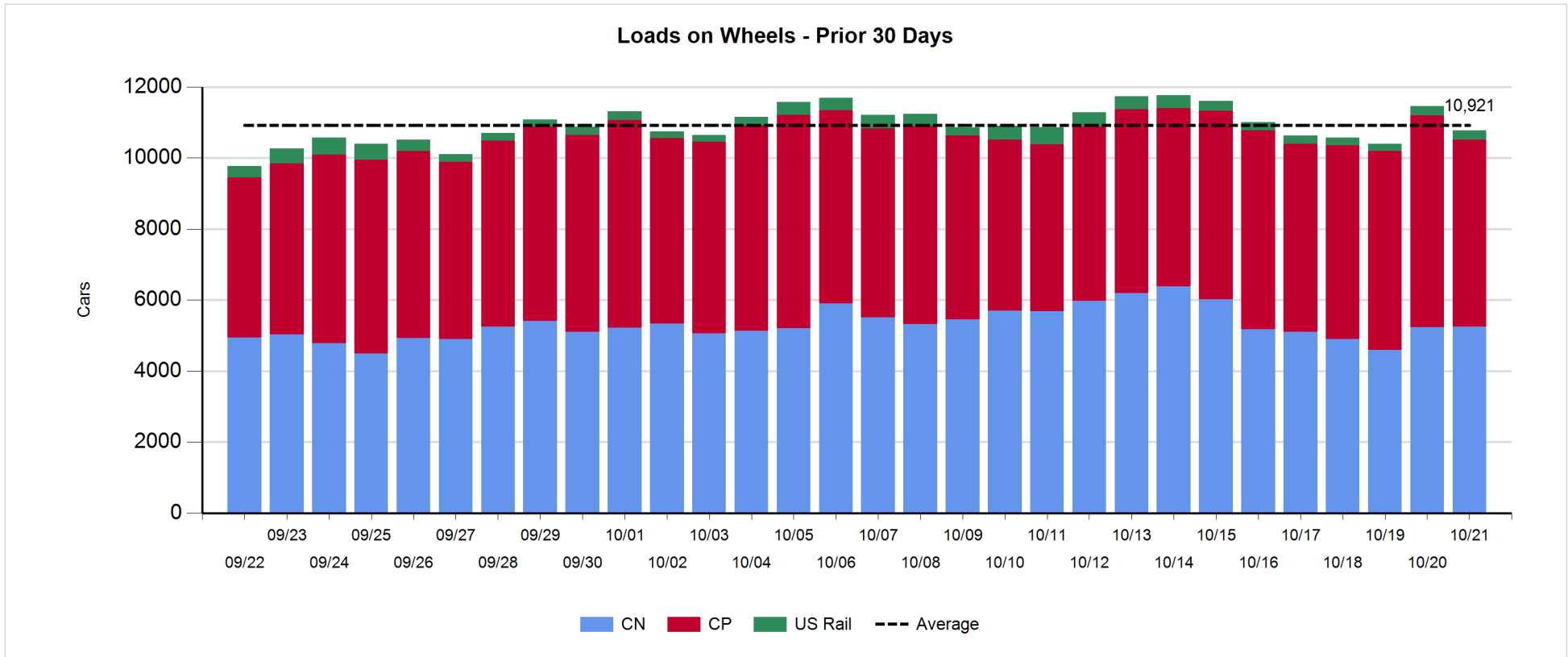
- CN and CP reported a total of 1,205 cars unloaded at the three major ports, now 1% below the trailing 30 day-average. Week 12 unloads finished ahead of last week's pace by more than 1,350 unloads, marking higher unloads across all three major ports - Vancouver, Thunder Bay and Prince Rupert.
- Vancouver
 - 925 unloads reported by CN and CP at the Port of Vancouver; CN - 417 and CP - 508. Week 12 unloads concluded ahead of last week's performance by less than 1,000 unloads.
 - There are 1,550 cars on site at Vancouver with 1,000 cars arriving at the port in the last 24 hours.
 - CN and CP have 1,400 cars in British Columbia en route to Vancouver, with 750 cars at Kamloops and west, and 65% of traffic moving on CP.
- Prince Rupert
 - Prince Rupert reported 231 unloads, ended ahead of last week's unloads by less than 150 unloads.
 - Loads on wheels now above 1,000 cars - presently at 1,587 cars.
 - There are 350 cars west of Jasper en route to Prince Rupert.
 - There are more than 50 cars on site at Prince Rupert with 200 cars arriving at the port in the last 24 hours. Given the structure of the pipeline, there appears to be sufficient cars available to support unloads in the next few days.
- Thunder Bay
 - 49 unloads were reported at Thunder Bay yesterday. Week 12 unloads finished ahead of last week's pace by 250 unloads.
 - There are more than 750 cars on site at Thunder Bay with more than 350 cars arriving at the port in the prior 24 hours.
 - There are less than 200 cars en route to Thunder Bay from Winnipeg and east. Cars on hand and those en route should support unloads in the next few days.

Daily Loads on Wheels - 10/21/2018

| | E Canada | Prince Rupert | Thunder Bay | USA/MEX | Vancouver | Total |
|------------|----------|---------------|-------------|---------|-----------|--------|
| CN | 330 | 1,587 | 214 | 171 | 2,944 | 5,246 |
| CP | 117 | | 1,070 | 553 | 3,531 | 5,271 |
| Short Line | 14 | | | | 14 | 28 |
| US Rail | | | | 225 | | 225 |
| | 461 | 1,587 | 1,284 | 949 | 6,489 | 10,770 |

Change in Loads on Wheels - Prior 24 Hours

| | E Canada | Prince Rupert | Thunder Bay | USA/MEX | Vancouver | Total |
|------------|----------|---------------|-------------|---------|-----------|-------|
| CN | -4 | -120 | -33 | -34 | 199 | 8 |
| CP | -11 | -4 | -16 | -2 | -658 | -691 |
| Short Line | 4 | | | | 0 | 4 |
| US Rail | | | | -3 | | -3 |
| | -11 | -124 | -49 | -39 | -459 | -682 |

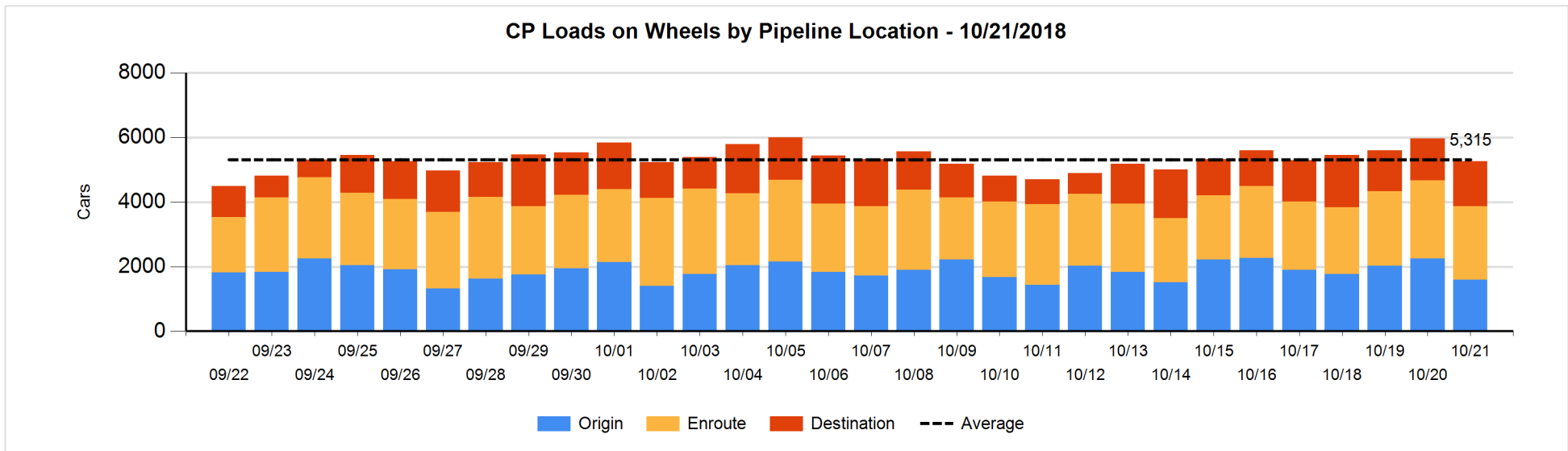
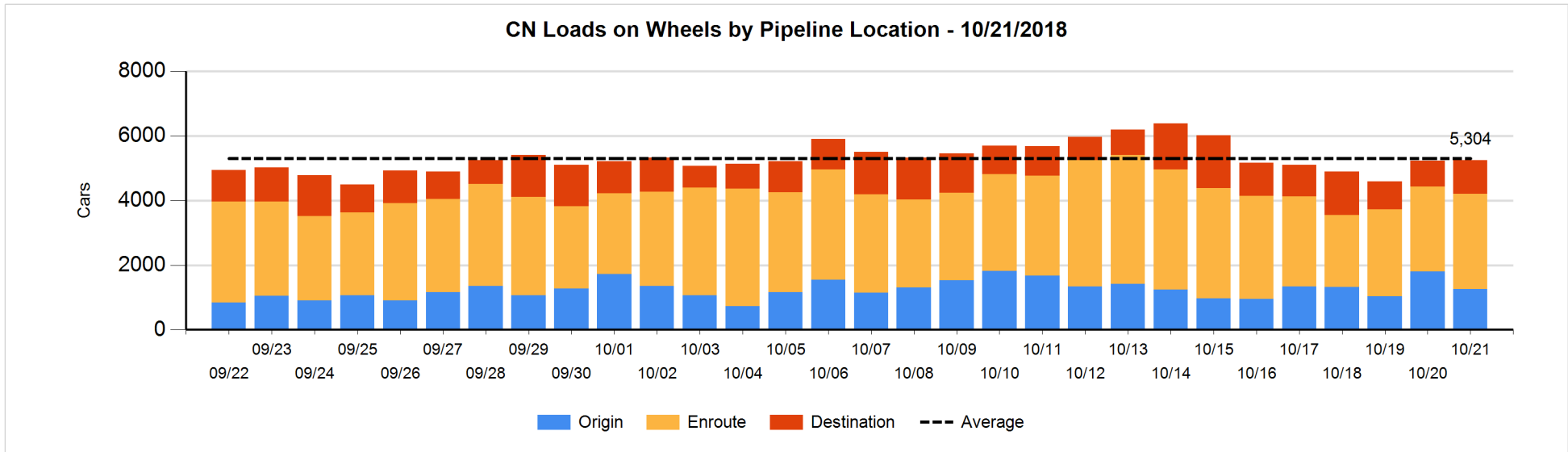


Daily Loads on Wheels By Pipeline Location - 10/21/2018

| | E Canada | Prince Rupert | Thunder Bay | USA/MEX | Vancouver | Total |
|----------------------|----------|---------------|-------------|---------|-----------|-------|
| CN | | | | | | |
| Origin | | 334 | | 5 | 915 | 1,254 |
| Enroute | 323 | 1,178 | 59 | 116 | 1,271 | 2,947 |
| Destination | 7 | 75 | 155 | 50 | 758 | 1,045 |
| | 330 | 1,587 | 214 | 171 | 2,944 | 5,246 |
| CP | | | | | | |
| Origin | 7 | | 287 | 49 | 1,255 | 1,598 |
| Enroute | 109 | | 165 | 497 | 1,504 | 2,275 |
| Destination | 1 | | 618 | 7 | 772 | 1,398 |
| | 117 | | 1,070 | 553 | 3,531 | 5,271 |
| US Rail / Short Line | | | | | | |
| Origin | | | | | | |
| Enroute | 9 | | | 96 | | 105 |
| Destination | 5 | | | 129 | 14 | 148 |
| | 14 | | | 225 | 14 | 253 |

Change in Daily Loads on Wheels By Pipeline Location - Prior 24 Hours

| | E Canada | Prince Rupert | Thunder Bay | USA/MEX | Vancouver | Total |
|----------------------|----------|---------------|-------------|---------|-----------|-------|
| CN | | | | | | |
| Origin | -35 | -448 | | -45 | -23 | -551 |
| Enroute | 40 | 362 | -42 | 0 | -46 | 314 |
| Destination | -9 | -34 | 9 | 11 | 268 | 245 |
| | -4 | -120 | -33 | -34 | 199 | 8 |
| CP | | | | | | |
| Origin | -23 | | -119 | -110 | -403 | -655 |
| Enroute | 14 | -4 | -201 | 106 | -57 | -142 |
| Destination | -2 | | 304 | 2 | -198 | 106 |
| | -11 | -4 | -16 | -2 | -658 | -691 |
| US Rail / Short Line | | | | | | |
| Origin | | | | | | |
| Enroute | 4 | | | 6 | | 10 |
| Destination | 0 | | | -9 | 0 | -9 |
| | 4 | | | -3 | 0 | 1 |

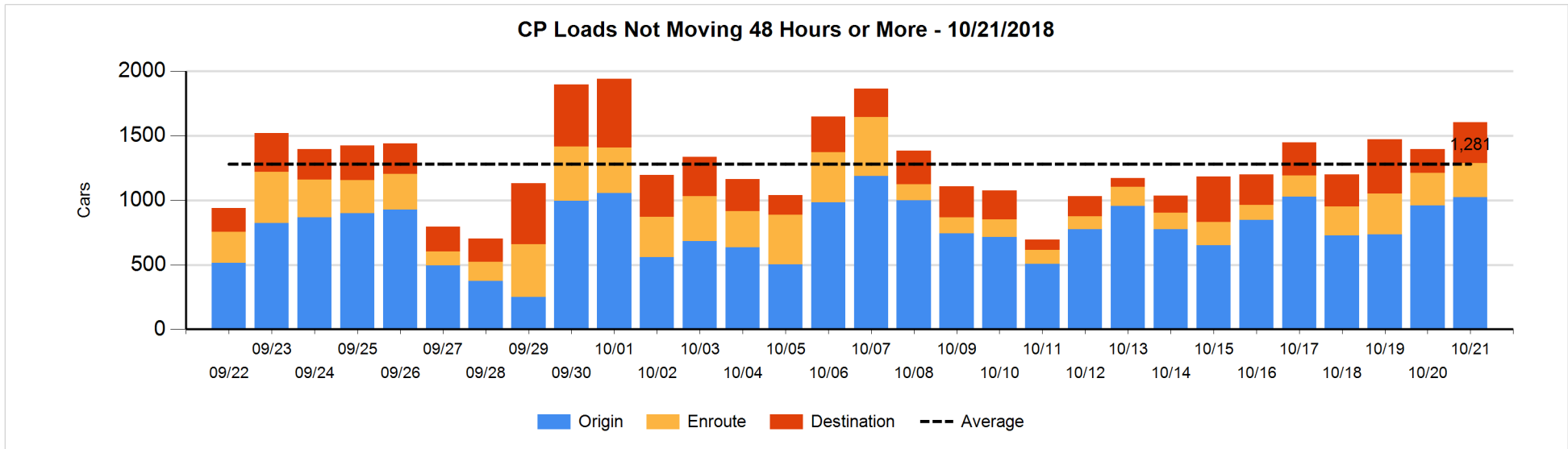
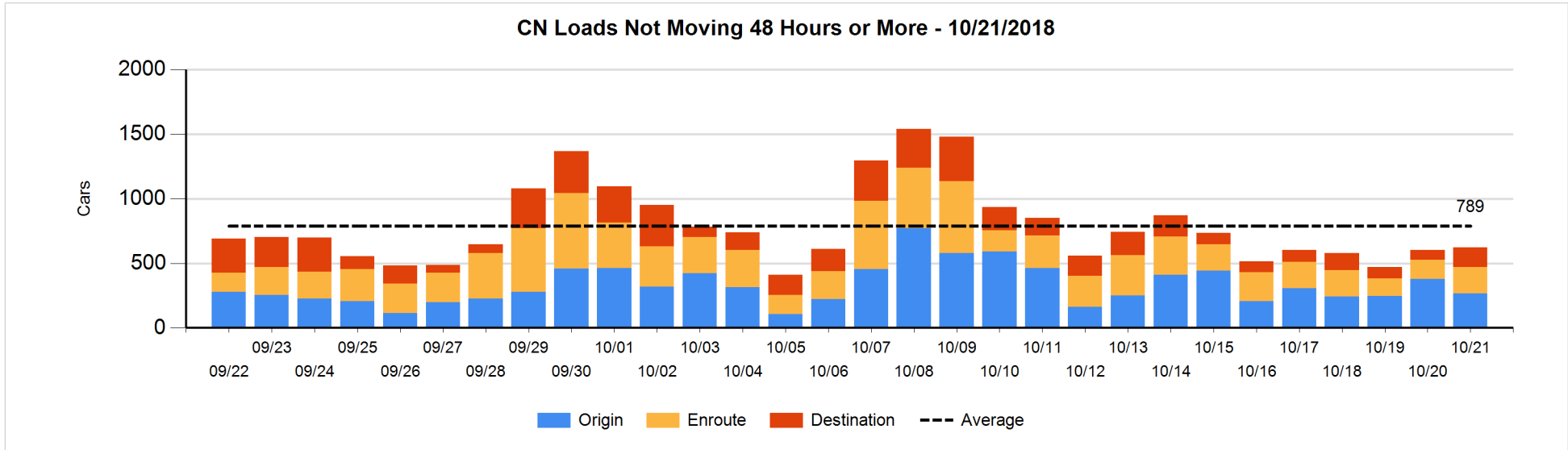


Loads Not Moving 48 Hours or More - 10/21/2018

| | E Canada | Prince Rupert | Thunder Bay | USA/MEX | Vancouver | Total |
|----------------------|----------|---------------|-------------|---------|-----------|-------|
| CN | | | | | | |
| Origin | | 102 | | 5 | 160 | 267 |
| Enroute | 39 | 77 | | 28 | 60 | 204 |
| Destination | 3 | 2 | 18 | 14 | 113 | 150 |
| | 42 | 181 | 18 | 47 | 333 | 621 |
| CP | | | | | | |
| Origin | 6 | | 287 | 42 | 688 | 1023 |
| Enroute | 2 | | 23 | 86 | 153 | 264 |
| Destination | 1 | | 95 | 7 | 216 | 319 |
| | 9 | | 405 | 135 | 1057 | 1606 |
| US Rail / Short Line | | | | | | |
| Origin | | | | | | |
| Enroute | 5 | | | 48 | | 53 |
| Destination | 5 | | | 50 | 7 | 62 |
| | 10 | | | 98 | 7 | 115 |

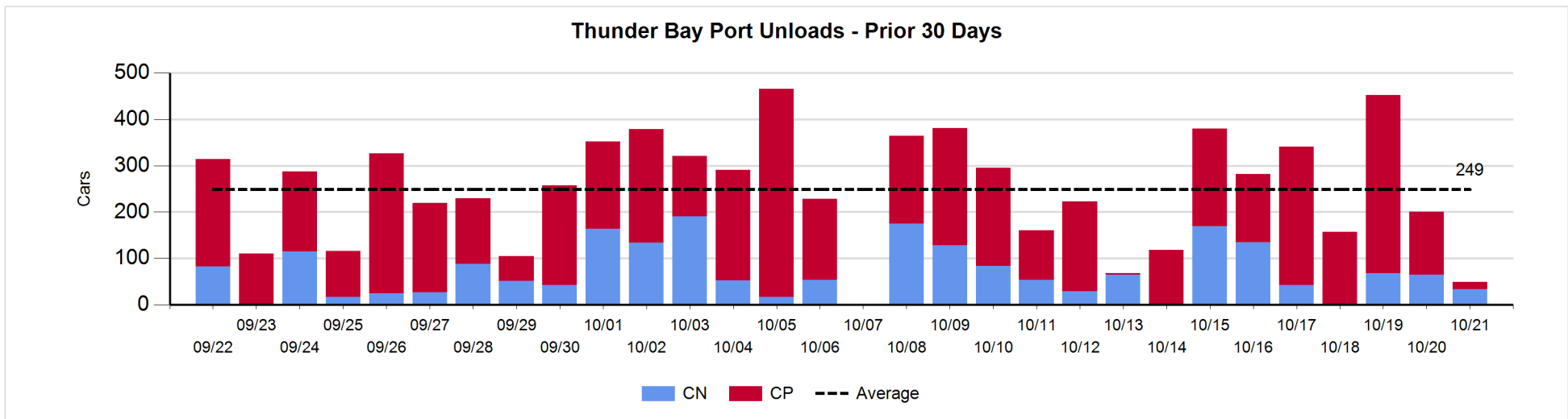
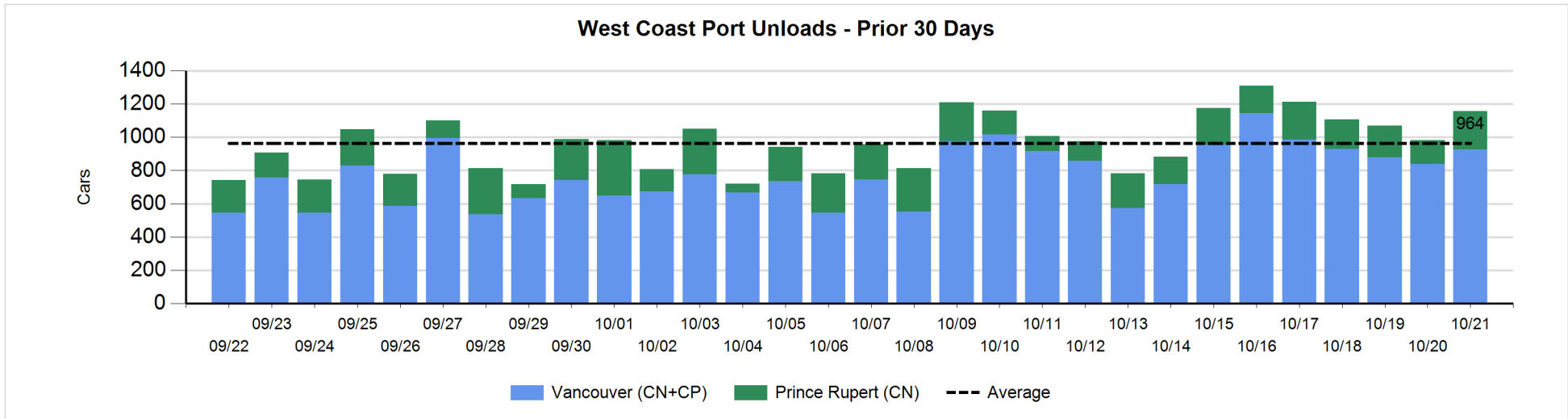
Change in Loads Not Moving 48 Hours or More - 10/21/2018

| | E Canada | Prince Rupert | Thunder Bay | USA/MEX | Vancouver | Total |
|----------------------|----------|---------------|-------------|---------|-----------|-------|
| CN | | | | | | |
| Origin | -35 | -63 | | -23 | 9 | -112 |
| Enroute | 32 | -2 | | -1 | 28 | 57 |
| Destination | -2 | -4 | 6 | 3 | 69 | 72 |
| | -5 | -69 | 6 | -21 | 106 | 17 |
| CP | | | | | | |
| Origin | 1 | | 97 | -117 | 83 | 64 |
| Enroute | 0 | | -7 | 14 | 5 | 12 |
| Destination | 0 | | 47 | 2 | 83 | 132 |
| | 1 | | 137 | -101 | 171 | 208 |
| US Rail / Short Line | | | | | | |
| Origin | | | | | | |
| Enroute | 3 | | | 6 | | 9 |
| Destination | 0 | | | 0 | 4 | 4 |
| | 3 | | | 6 | 4 | 13 |



Port Unloads - 10/21/2018

| | Prince Rupert | Vancouver | West Coast Total | Thunder Bay | Total |
|----|---------------|-----------|------------------|-------------|-------|
| CN | 231 | 417 | 648 | 33 | 681 |
| CP | | 508 | 508 | 16 | 524 |
| | 231 | 925 | 1,156 | 49 | 1,205 |



Port Terminal Status

Vancouver

Daily Activity for 10/21/2018

| | Cars Arrived | Cars Received in Interchange | Cars Delivered in Interchange | Cars Placed for Unloading | Loads on Wheels at Destination As of 10/21/2018 |
|-----|--------------|------------------------------|-------------------------------|---------------------------|---|
| CN | 503 | 238 | 104 | 309 | 758 |
| CP | 492 | 104 | 238 | 479 | 772 |
| SRY | | | | | 14 |

Port Unloads

| | 10/21 | 10/20 | Week To Date | Last Week |
|-----|-------|-------|--------------|-----------|
| CN | 417 | 256 | 3,235 | 2,453 |
| CP | 508 | 582 | 3,422 | 3,158 |
| SRY | | | 33 | 97 |

Age Profile of Loaded Cars Waiting Placement for Unloading

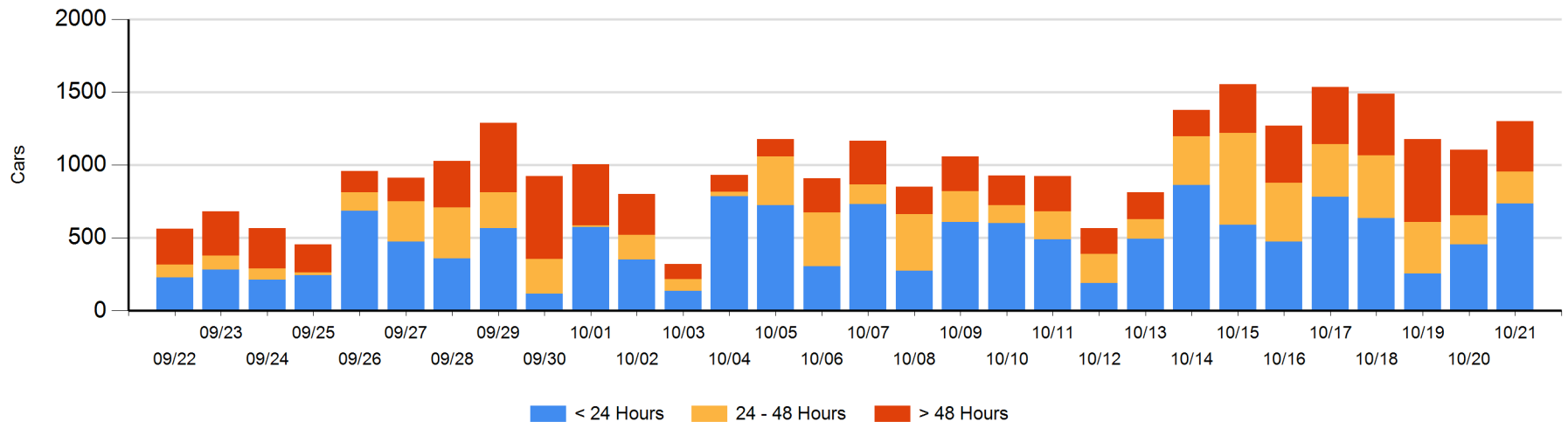
Today

| | < 24 Hrs | 24 - 48 Hrs | > 48-72 Hrs | > 72 Hrs | Total On Hand |
|-----|----------|-------------|-------------|----------|---------------|
| CN | 475 | 22 | 51 | 160 | 708 |
| CP | 259 | 200 | 106 | 26 | 591 |
| SRY | | | | | 0 |

Change in Last 24 Hours

| | < 24 Hrs | 24-48 Hrs | 48 - 72 Hrs | > 72 Hrs |
|-----|----------|-----------|-------------|----------|
| CN | 430 | -70 | -78 | 13 |
| CP | -153 | 94 | 41 | -84 |
| SRY | | | | |

Loaded Cars on Hand Vancouver Waiting for Placement - Last 30 Days All Railways



Port Terminal Status

Prince Rupert

Daily Activity for 10/21/2018

| | Cars Arrived | Cars Received in Interchange | Cars Delivered in Interchange | Cars Placed for Unloading | Loads on Wheels at Destination As of 10/21/2018 |
|----|--------------|------------------------------|-------------------------------|---------------------------|---|
| CN | 200 | | | 200 | 75 |

Port Unloads

| | 10/21 | 10/20 | Week To Date | Last Week |
|----|-------|-------|--------------|-----------|
| CN | 231 | 144 | 1,360 | 1,223 |

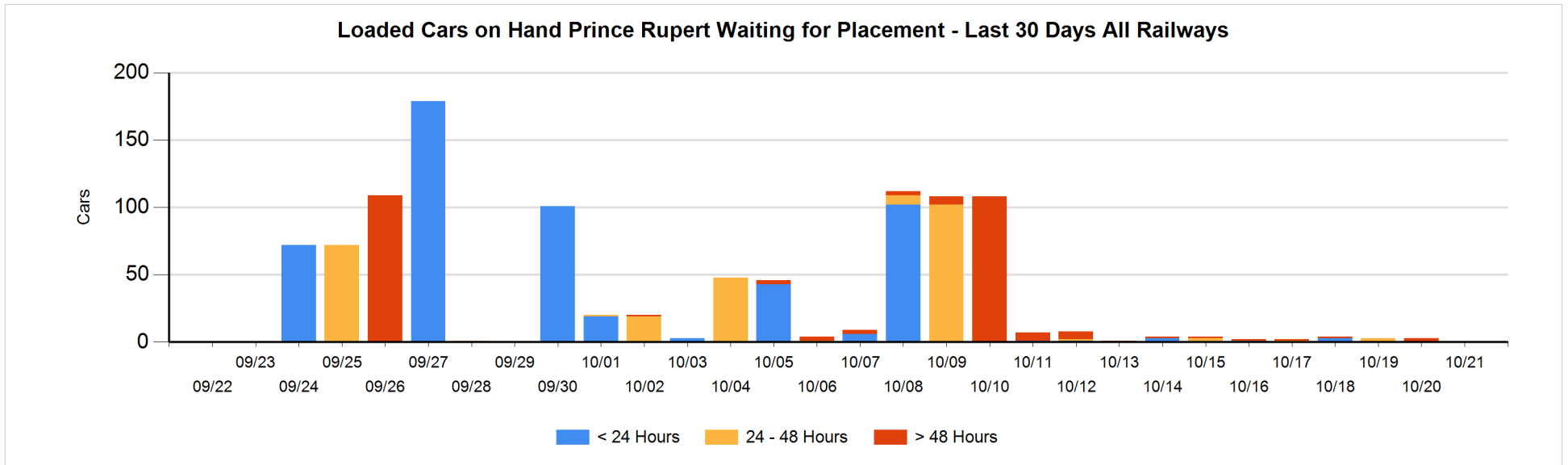
Age Profile of Loaded Cars Waiting Placement for Unloading

Today

| | < 24 Hrs | 24 - 48 Hrs | > 48-72 Hrs | > 72 Hrs | Total On Hand |
|----|----------|-------------|-------------|----------|---------------|
| CN | | | | | 0 |

Change in Last 24 Hours

| | < 24 Hrs | 24-48 Hrs | 48 - 72 Hrs | > 72 Hrs |
|----|----------|-----------|-------------|----------|
| CN | | | -3 | |



Port Terminal Status

Thunder Bay

Daily Activity for 10/21/2018

| | Cars Arrived | Cars Received in Interchange | Cars Delivered in Interchange | Cars Placed for Unloading | Loads on Wheels at Destination As of 10/21/2018 |
|----|--------------|------------------------------|-------------------------------|---------------------------|---|
| CN | 42 | | | 47 | 155 |
| CP | 320 | | | 131 | 618 |

Port Unloads

| | 10/21 | 10/20 | Week To Date | Last Week |
|----|-------|-------|--------------|-----------|
| CN | 33 | 65 | 512 | 536 |
| CP | 16 | 136 | 1,350 | 1,073 |

Age Profile of Loaded Cars Waiting Placement for Unloading

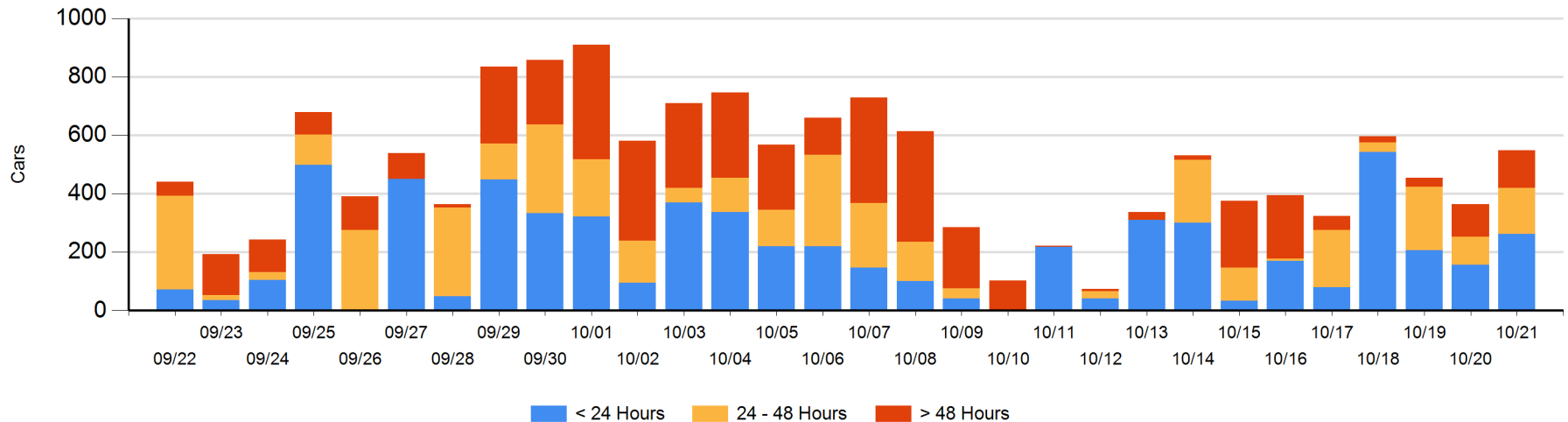
Today

| | < 24 Hrs | 24 - 48 Hrs | > 48-72 Hrs | > 72 Hrs | Total On Hand |
|----|----------|-------------|-------------|----------|---------------|
| CN | 42 | 47 | | 15 | 104 |
| CP | 221 | 110 | 77 | 36 | 444 |

Change in Last 24 Hours

| | < 24 Hrs | 24-48 Hrs | 48 - 72 Hrs | > 72 Hrs |
|----|----------|-----------|-------------|----------|
| CN | -5 | 47 | -43 | -4 |
| CP | 111 | 15 | 39 | 24 |

Loaded Cars on Hand Thunder Bay Waiting for Placement - Last 30 Days All Railways



Measurement Definitions

| | |
|---------------------------------|---|
| Loads on Wheels | <p>Count of loaded rail cars including all rail cars that have been released loaded at origin and have not been reported by the railway as unloaded at destination.</p> <p>Counts include all rail cars (hopper cars and boxcars) moving within a pipeline.</p> |
| Loads Not Moving | <p>Loaded rail cars for which the railways have not reported a movement event for 48 hours or more whether the rail car is at origin, enroute or at destination.</p> |
| Port Unloads | <p>Count of rail cars reported by railways as unloaded at the western port destinations of Vancouver, Prince Rupert and Thunder Bay.</p> <p>Unload counts include all rail cars (hopper cars and boxcars) unloaded by all receivers including major port terminals, transloaders and other receivers.</p> |
| Cars Arrived | <p>Count of rail cars reported as arrived at the destination railway terminal.</p> |
| Cars Received in Interchange | <p>Count of rail cars received in interchange by each railway within a destination railway terminal. Interchange activity is tracked for the Vancouver and Thunder Bay pipelines as applicable.</p> |
| Cars Delivered in Interchange | <p>Count of rail cars delivered in interchange by each railway within a destination railway terminal. Interchange activity is tracked for the Vancouver and Thunder Bay pipelines as applicable.</p> |
| Cars Placed for Unloading | <p>Count of rail cars reported by the railways as placed loaded at the receiver's facility for unloading.</p> |
| Loads on Wheels at Destination | <p>Count of rail cars that remain under load within the destination railway terminal including rail cars that have been reported as placed for unloading but not yet reported as unloaded.</p> |
| Waiting Placement for Unloading | <p>Count of rail cars that have been reported as arrived at the destination railway terminal but not reported as placed for unloading by the railway.</p> <p>For the Ports of Vancouver, Prince Rupert and Thunder Bay the count of rail cars waiting placement for unloading is categorized by age – i.e. the elapsed time from arrival at destination to the current report date.</p> |