

## SPEED READ

- Loads on wheels increased overnight, marking a rise in both CN and CP volumes. On a net basis, volumes rose due to higher traffic in the Vancouver, Thunder Bay and E. Canada corridors offset by lower volumes in the USA/MEX and Prince Rupert corridors.
- Network fluidity deteriorated overnight, led by a rise in idle car counts on both CN and CP by 1% (+5) and 13% (+216), respectively. The total count of cars for 4+ days on both railways increased significantly by 71% (+468) overnight - currently at 1,131 cars.
- One day in Week 13 unloads now behind prior week's performance by more than 150 unloads, marking lower unloads at Prince Rupert and Vancouver offset by improved week over week performance at Thunder Bay.

---

## Loads on Wheels

- Loads on wheels rose 2% (+253) overnight, due to higher volumes on both CN and CP - combined total at 11,014 and in line with the trailing 30-day average.
- On a net basis, the increase in loads on wheels reflects higher traffic in the Vancouver, Thunder Bay and E. Canada corridors offset by reduced volumes in the USA/MEX and Prince Rupert corridors.
- CN volumes rose 5% (+263) overnight and have now increased for the third consecutive day, with higher volumes in the Vancouver and USA/MEX corridors offset by lower traffic in the Thunder Bay and Prince Rupert corridors. System wide CN loads on wheels currently at 5,510 and 3% above the trailing 30-day average.
- CP volumes increased slightly by 1% (+30) overnight, driven by a rise in traffic in the Thunder Bay and E. Canada corridors offset by a decline in traffic in the USA/MEX and Vancouver corridors. CP system wide loads on wheels now at 5,295 and 1% below the trailing 30-day average.
- Vancouver now at 6,749, rose 4% (+259) overnight, now 6% above the trailing 30-day average.
- The Prince Rupert pipeline now at 1,543, declined 3% (-44) overnight and 2% above the trailing 30-day average.
- Thunder Bay volumes gained 6% (+72) overnight - presently at 1,356 and 21% below the trailing 30-day average, with 94% of traffic moving on CP.

## Hopper Car Rationing

- No hopper car rationing was reported for either CN or CP in week 11.

## Loads Not Moving

- **The count of cars not moving for 48+ hours rose 10% (+221) overnight and have now increased for the fourth consecutive day, marking higher counts on both CN and CP. Idle car counts presently at 2,448 and 17% above the trailing 30-day average.**
- CN
  - **The count of idle cars for 48+ hours increased for three consecutive days, up 1% (+5) overnight - currently at 628 cars.**
  - The number of cars idle for 4+ days surged by 104% (+181) overnight - presently at 355 cars.
  - The count of cars not moving for 7+ days fell 12% (-9) overnight - presently at 65 cars.
  - Vancouver represents 55% of all idle cars.
  - In total 45% of all idle cars are dwelling at origin locations.
- CP
  - **CP idle car counts for 48+ hours rose 13% (+216) overnight - currently at 1,820 cars.**
  - The number of cars idle for 4+ days increased significantly by 59% (+287) overnight - now at 776 cars.

- The number of cars idle for 7+ days gained 22% (+38) overnight - now at 211 cars.
- Vancouver accounts for 70% of all idle cars.
- In total 67% of all idle cars are dwelling at origin locations.

### **Port Performance**

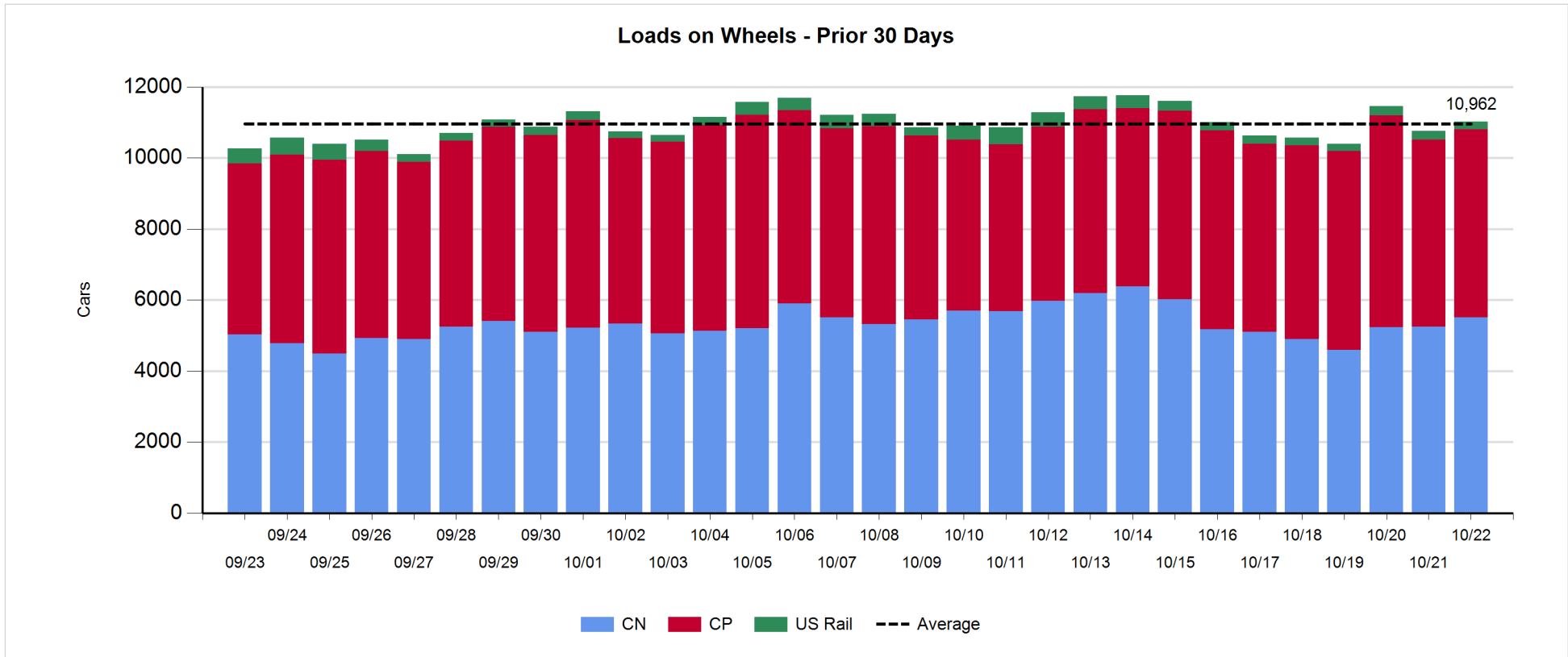
- CN and CP reported a total of 1,394 cars unloaded at the three major ports, now 14% above the trailing 30-day average. One day in Week 13 unloads are tracking behind last week's pace by more than 150 unloads, marking reduced unloads at Prince Rupert and Vancouver offset by higher unloads at Thunder Bay.
- Vancouver
  - 925 unloads reported by CN and CP at the Port of Vancouver; CN - 398 and CP - 527. One day in Week 13 unloads are tracking behind last week's performance by fewer than 50 unloads.
  - There are more than 1,450 cars on site at Vancouver with 850 cars arriving at the port in the last 24 hours.
  - CN and CP have fewer than 1,200 cars in British Columbia en route to Vancouver, with about 650 cars at Kamloops and west, and 55% of traffic moving on CP.
- Prince Rupert
  - Prince Rupert reported 66 unloads, now behind last week's unloads after one day by 150 unloads.
  - Loads on wheels now above 1,000 cars - presently at 1,543 cars.
  - There are about 550 cars west of Jasper en route to Prince Rupert.
  - There are about 50 cars on site at Prince Rupert with 29 cars arriving at the port in the last 24 hours. Given the structure of the pipeline, there appears to be sufficient cars available to support unloads in the next few days.
- Thunder Bay
  - 403 unloads were reported at Thunder Bay yesterday. One day in Week 13 unloads are tracking ahead of last week's pace by 23 unloads.
  - There are more than 500 cars on site at Thunder Bay with 150 cars arriving at the port in the prior 24 hours.
  - There are 50 cars en route to Thunder Bay from Winnipeg and east. Cars on hand and those en route should support unloads in the next few days.

**Daily Loads on Wheels - 10/22/2018**

	E Canada	Prince Rupert	Thunder Bay	USA/MEX	Vancouver	Total
CN	334	1,543	83	255	3,295	5,510
CP	143		1,273	439	3,440	5,295
Short Line	18				14	32
US Rail				177		177
	495	1,543	1,356	871	6,749	11,014

**Change in Loads on Wheels - Prior 24 Hours**

	E Canada	Prince Rupert	Thunder Bay	USA/MEX	Vancouver	Total
CN	0	-44	-131	83	355	263
CP	30		203	-112	-91	30
Short Line	4				-5	-1
US Rail				-39		-39
	34	-44	72	-68	259	253

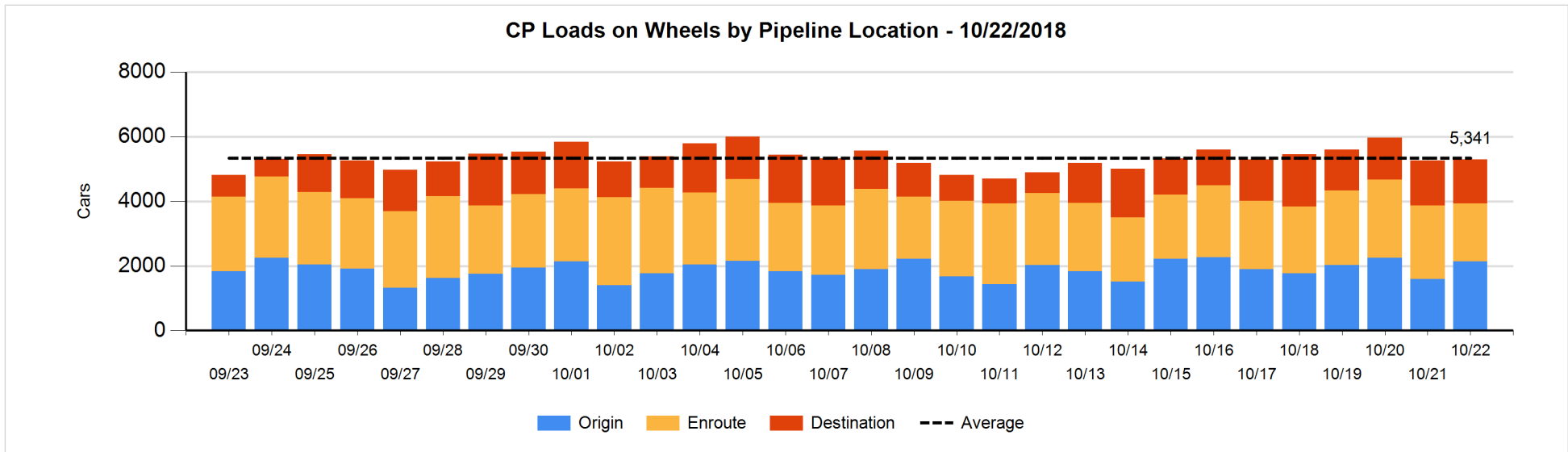
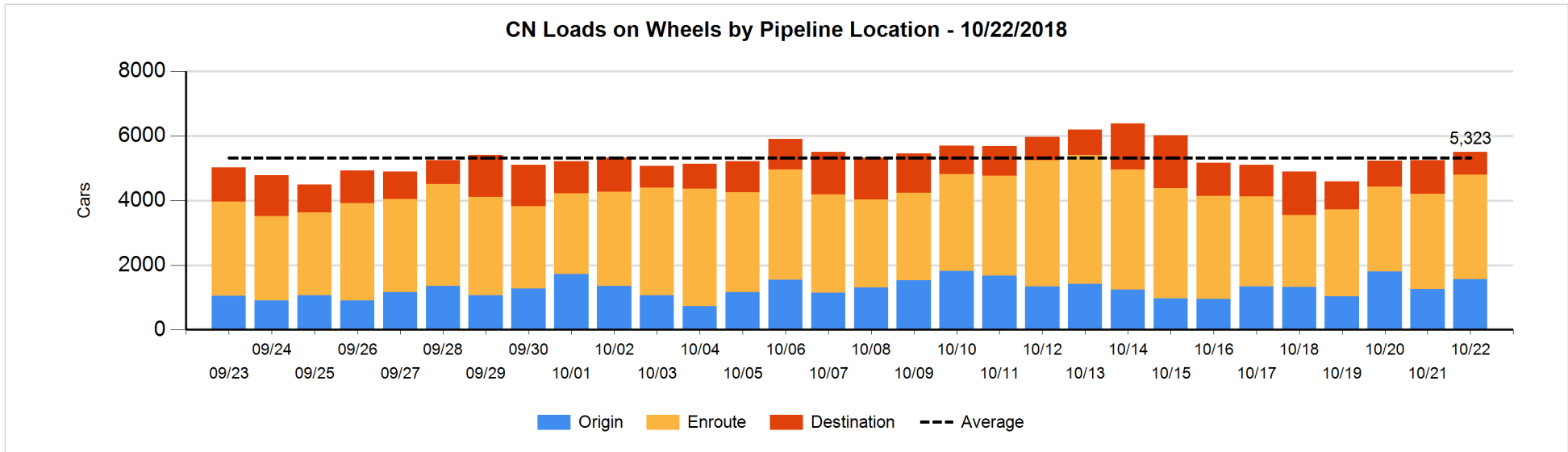


**Daily Loads on Wheels By Pipeline Location - 10/22/2018**

	E Canada	Prince Rupert	Thunder Bay	USA/MEX	Vancouver	Total
CN						
Origin	26	234		94	1,205	1,559
Enroute	296	1,270	13	116	1,537	3,232
Destination	12	39	70	45	553	719
	334	1,543	83	255	3,295	5,510
CP						
Origin	86		639	48	1,373	2,146
Enroute	56		179	386	1,167	1,788
Destination	1		455	5	900	1,361
	143		1,273	439	3,440	5,295
US Rail / Short Line						
Origin						
Enroute	9			77		86
Destination	9			100	14	123
	18			177	14	209

**Change in Daily Loads on Wheels By Pipeline Location - Prior 24 Hours**

	E Canada	Prince Rupert	Thunder Bay	USA/MEX	Vancouver	Total
CN						
Origin	26	-100		89	289	304
Enroute	-31	92	-46	-1	266	280
Destination	5	-36	-85	-5	-200	-321
	0	-44	-131	83	355	263
CP						
Origin	79		352	-1	118	548
Enroute	-49		14	-110	-337	-482
Destination	0		-163	-1	128	-36
	30		203	-112	-91	30
US Rail / Short Line						
Origin						
Enroute	0			-19		-19
Destination	4			-20	-5	-21
	4			-39	-5	-40

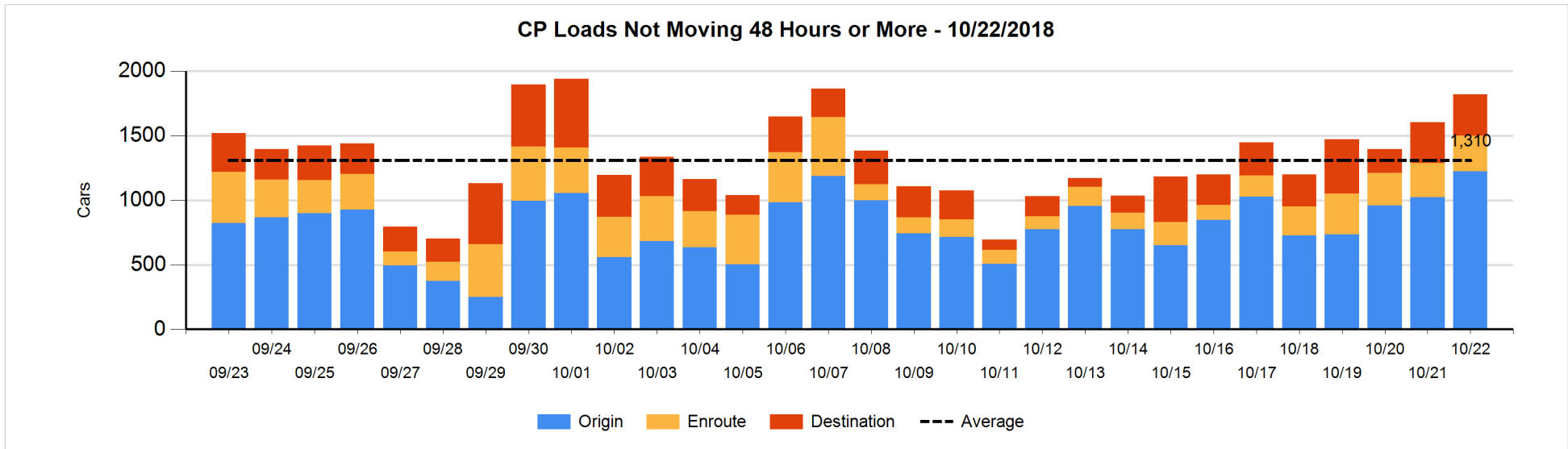
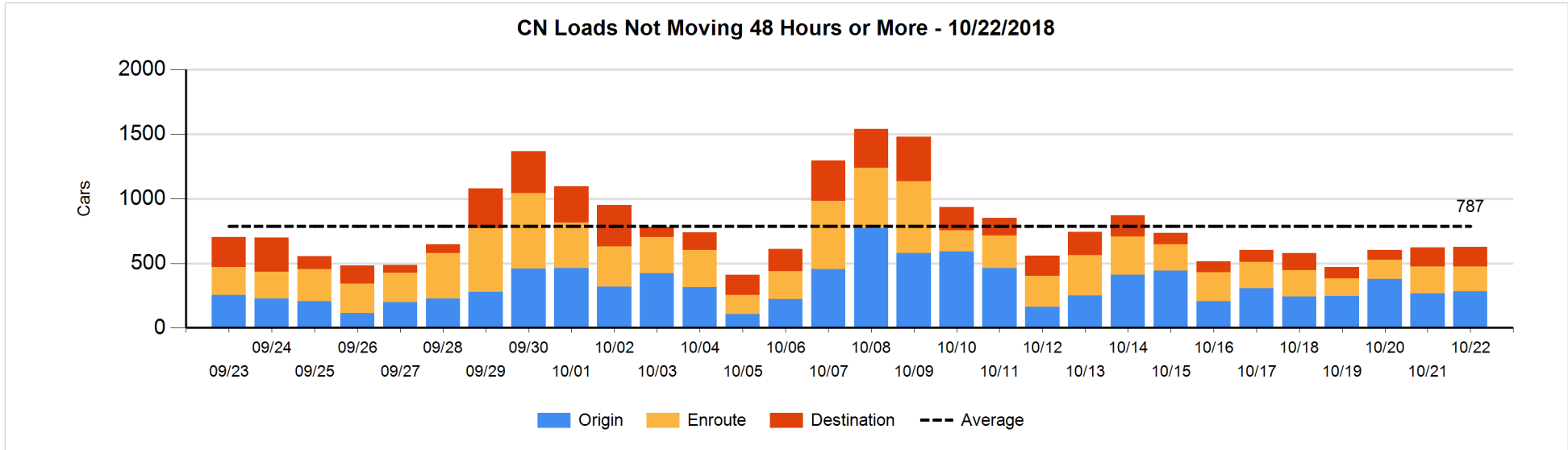


**Loads Not Moving 48 Hours or More - 10/22/2018**

	E Canada	Prince Rupert	Thunder Bay	USA/MEX	Vancouver	Total
<b>CN</b>						
Origin		102		5	174	281
Enroute	34	80	13	29	39	195
Destination	1	2	6	9	134	152
	35	184	19	43	347	628
<b>CP</b>						
Origin	6		274	35	907	1222
Enroute	13		23	81	161	278
Destination	1		109	5	205	320
	20		406	121	1273	1820
<b>US Rail / Short Line</b>						
Origin						
Enroute	5			24		29
Destination				58	6	64
	5			82	6	93

**Change in Loads Not Moving 48 Hours or More - 10/22/2018**

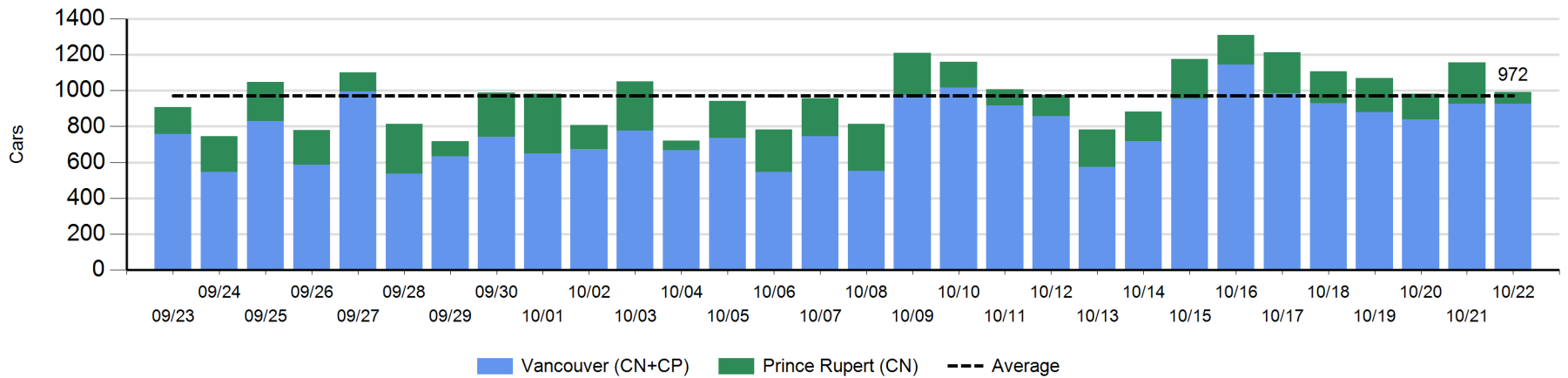
	E Canada	Prince Rupert	Thunder Bay	USA/MEX	Vancouver	Total
<b>CN</b>						
Origin		0		0	13	13
Enroute	-5	3	13	0	-21	-10
Destination	-2	0	-12	-5	21	2
	-7	3	1	-5	13	5
<b>CP</b>						
Origin	0		-13	-7	219	199
Enroute	11		0	-4	8	15
Destination	0		14	-1	-11	2
	11		1	-12	216	216
<b>US Rail / Short Line</b>						
Origin						
Enroute	0			-24		-24
Destination	-5			7	-1	1
	-5			-17	-1	-23



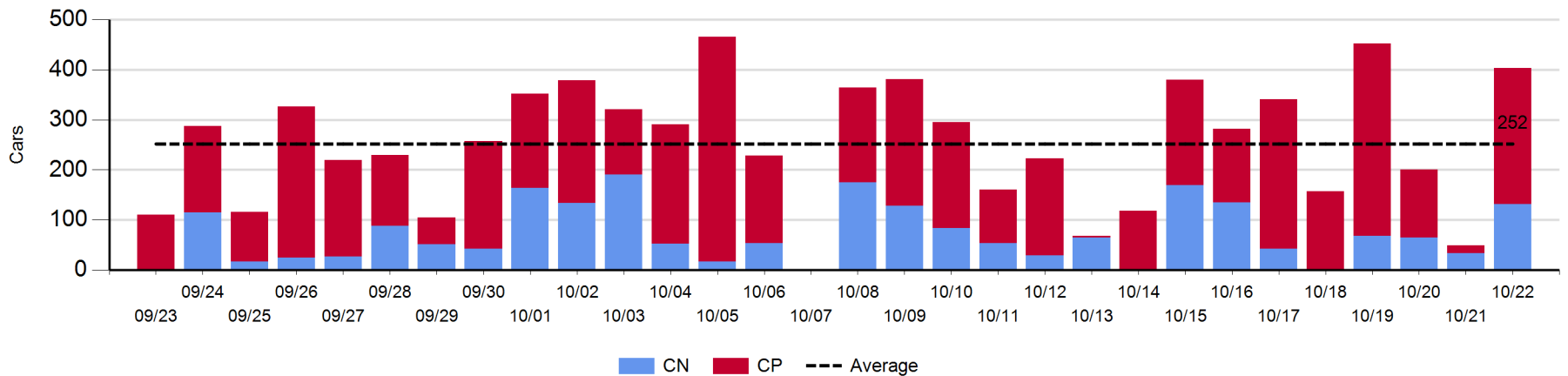
**Port Unloads - 10/22/2018**

	Prince Rupert	Vancouver	West Coast Total	Thunder Bay	Total
CN	66	398	464	131	595
CP		527	527	272	799
	66	925	991	403	1,394

**West Coast Port Unloads - Prior 30 Days**



**Thunder Bay Port Unloads - Prior 30 Days**





**Port Terminal Status**

**Vancouver**

Daily Activity for 10/22/2018

	Cars Arrived	Cars Received in Interchange	Cars Delivered in Interchange	Cars Placed for Unloading	Loads on Wheels at Destination As of 10/22/2018
CN	169	112	85	412	553
CP	683	85	112	600	900
SRY				6	14

**Port Unloads**

	10/22	10/21	Week To Date	Last Week
CN	398	417	398	3,235
CP	527	508	527	3,422
SRY	5		5	33

**Age Profile of Loaded Cars Waiting Placement for Unloading**

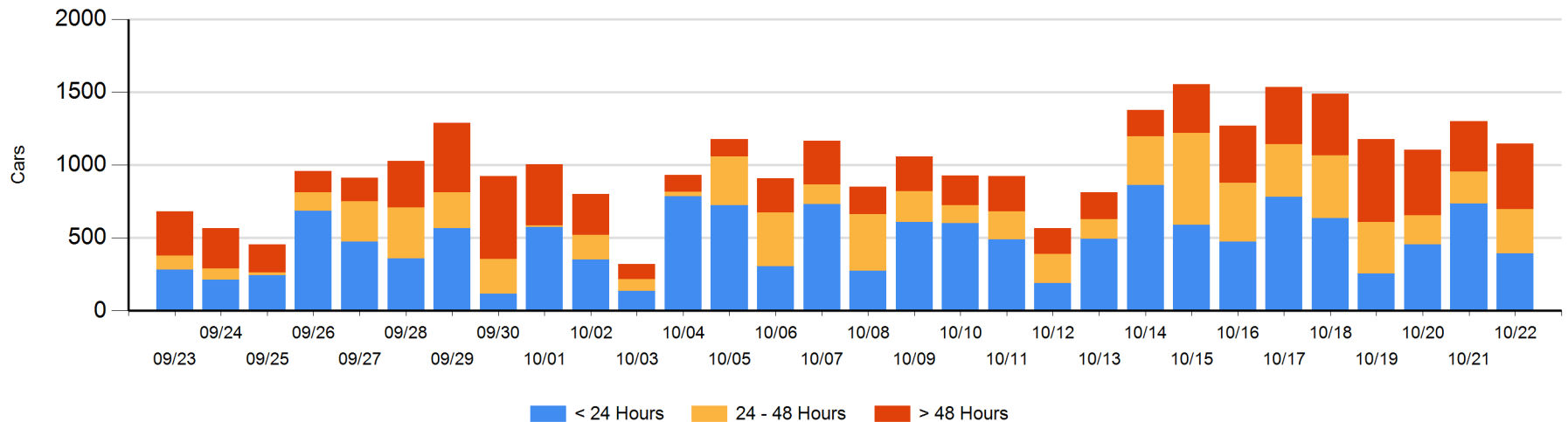
**Today**

	< 24 Hrs	24 - 48 Hrs	> 48-72 Hrs	> 72 Hrs	Total On Hand
CN	22	193	22	155	392
CP	372	111	200	71	754
SRY					0

**Change in Last 24 Hours**

	< 24 Hrs	24-48 Hrs	48 - 72 Hrs	> 72 Hrs
CN	-454	171	-29	-5
CP	114	-89	94	45
SRY				

**Loaded Cars on Hand Vancouver Waiting for Placement - Last 30 Days All Railways**



**Port Terminal Status**

**Prince Rupert**

Daily Activity for 10/22/2018

	Cars Arrived	Cars Received in Interchange	Cars Delivered in Interchange	Cars Placed for Unloading	Loads on Wheels at Destination As of 10/22/2018
CN	29			30	39

**Port Unloads**

	10/22	10/21	Week To Date	Last Week
CN	66	231	66	1,360

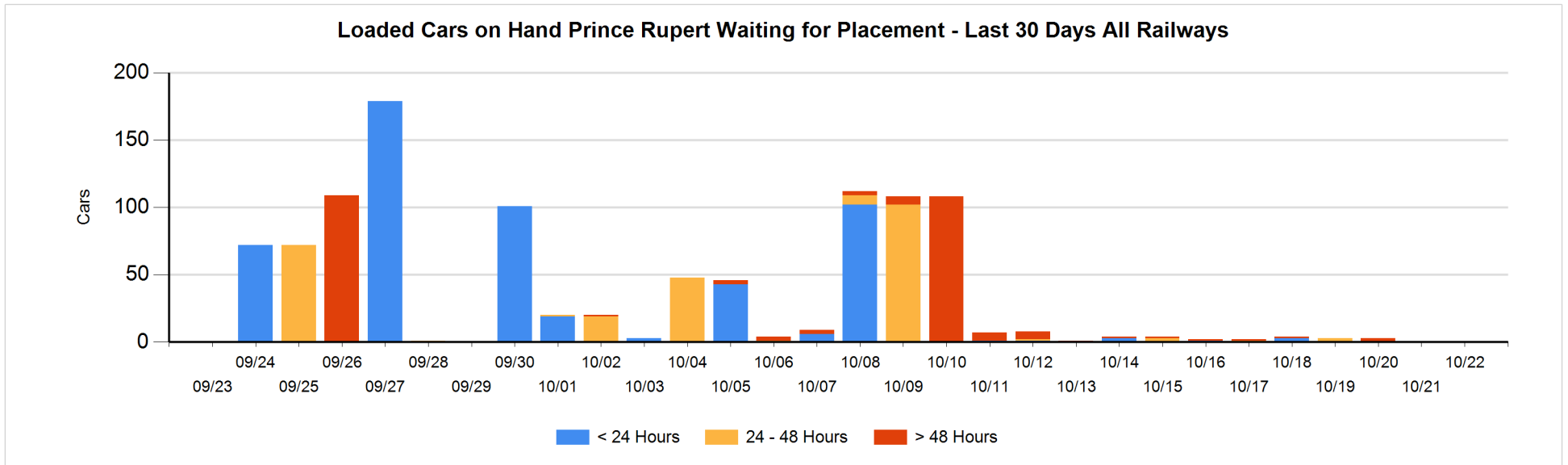
**Age Profile of Loaded Cars Waiting Placement for Unloading**

**Today**

	< 24 Hrs	24 - 48 Hrs	> 48-72 Hrs	> 72 Hrs	Total On Hand
CN					0

**Change in Last 24 Hours**

	< 24 Hrs	24-48 Hrs	48 - 72 Hrs	> 72 Hrs
CN				



**Port Terminal Status**

**Thunder Bay**

Daily Activity for 10/22/2018

	Cars Arrived	Cars Received in Interchange	Cars Delivered in Interchange	Cars Placed for Unloading	Loads on Wheels at Destination As of 10/22/2018
CN	46			107	70
CP	109			96	455

**Port Unloads**

	10/22	10/21	Week To Date	Last Week
CN	131	33	131	512
CP	272	16	272	1,350

**Age Profile of Loaded Cars Waiting Placement for Unloading**

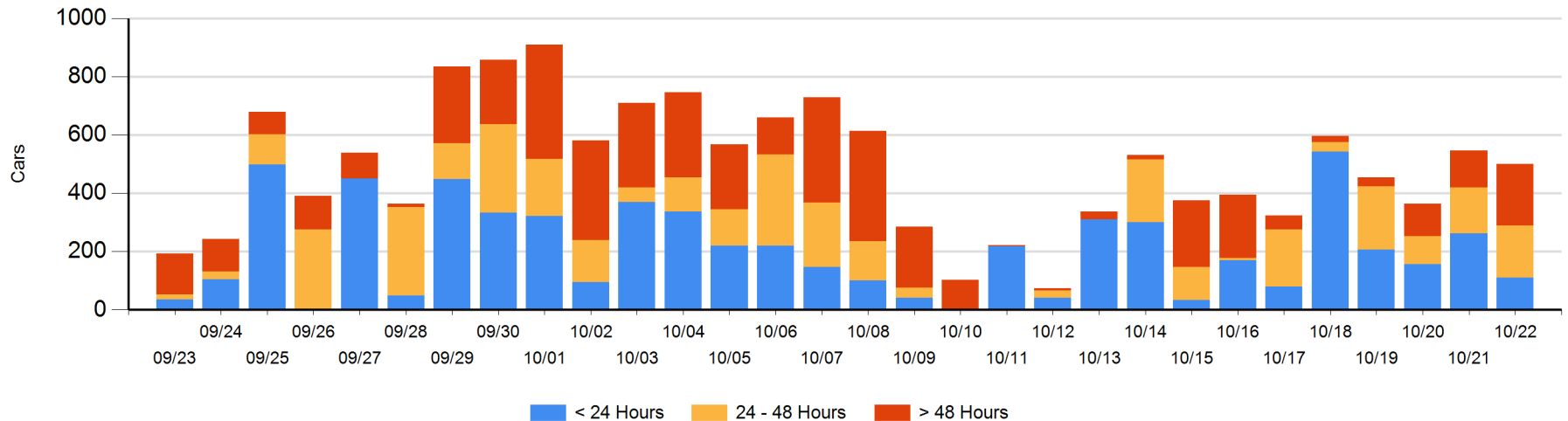
**Today**

	< 24 Hrs	24 - 48 Hrs	> 48-72 Hrs	> 72 Hrs	Total On Hand
CN	1	37		5	43
CP	109	143	109	96	457

**Change in Last 24 Hours**

	< 24 Hrs	24-48 Hrs	48 - 72 Hrs	> 72 Hrs
CN	-41	-10		-10
CP	-112	34	32	60

**Loaded Cars on Hand Thunder Bay Waiting for Placement - Last 30 Days All Railways**



## Measurement Definitions

Loads on Wheels	<p>Count of loaded rail cars including all rail cars that have been released loaded at origin and have not been reported by the railway as unloaded at destination.</p> <p>Counts include all rail cars (hopper cars and boxcars) moving within a pipeline.</p>
Loads Not Moving	<p>Loaded rail cars for which the railways have not reported a movement event for 48 hours or more whether the rail car is at origin, enroute or at destination.</p>
Port Unloads	<p>Count of rail cars reported by railways as unloaded at the western port destinations of Vancouver, Prince Rupert and Thunder Bay.</p> <p>Unload counts include all rail cars (hopper cars and boxcars) unloaded by all receivers including major port terminals, transloaders and other receivers.</p>
Cars Arrived	<p>Count of rail cars reported as arrived at the destination railway terminal.</p>
Cars Received in Interchange	<p>Count of rail cars received in interchange by each railway within a destination railway terminal. Interchange activity is tracked for the Vancouver and Thunder Bay pipelines as applicable.</p>
Cars Delivered in Interchange	<p>Count of rail cars delivered in interchange by each railway within a destination railway terminal. Interchange activity is tracked for the Vancouver and Thunder Bay pipelines as applicable.</p>
Cars Placed for Unloading	<p>Count of rail cars reported by the railways as placed loaded at the receiver's facility for unloading.</p>
Loads on Wheels at Destination	<p>Count of rail cars that remain under load within the destination railway terminal including rail cars that have been reported as placed for unloading but not yet reported as unloaded.</p>
Waiting Placement for Unloading	<p>Count of rail cars that have been reported as arrived at the destination railway terminal but not reported as placed for unloading by the railway.</p> <p>For the Ports of Vancouver, Prince Rupert and Thunder Bay the count of rail cars waiting placement for unloading is categorized by age – i.e. the elapsed time from arrival at destination to the current report date.</p>