

SPEED READ

- Loads on wheels increased overnight, reflecting an increase in both CN and CP volumes. On a net basis, volumes rose due to higher traffic in the Thunder Bay, Prince Rupert and USA/MEX corridors offset by reduced traffic in the Vancouver and E. Canada corridors.
- Network fluidity deteriorated overnight, led by a rise in idle car counts on both CN and CP by 26% (+237) and 2% (+21), respectively. The total count of cars for 4+ days on both railways increased 20% (+149) overnight - now at 897 cars.
- Week 13 unloads concluded behind prior week's performance by nearly 1,500 unloads, marking lower unloads across all three major ports - Vancouver, Thunder Bay and Prince Rupert.

Loads on Wheels

- Loads on wheels increased for the fourth consecutive day, up 3% (+367) overnight, due to higher volumes on both CN and CP - combined total at 12,446, the highest seen in the last 30 days, and 11% above the trailing 30-day average.
- On a net basis, the rise in loads on wheels reflects higher traffic in the Thunder Bay, Prince Rupert and USA/MEX corridors offset by reduced traffic in the Vancouver and E. Canada corridors.
- CN volumes increased for five consecutive days, up 2% (+123) overnight, with higher volumes in the Prince Rupert, Thunder Bay and Vancouver corridors offset by lower traffic in the USA/MEX and E. Canada corridors. System wide CN loads on wheels currently at 6,075 and 11% above the trailing 30-day average.
- CP volumes increased slightly by 2% (+114) overnight and have now increased for the fourth consecutive day, driven by a rise in traffic in the Thunder Bay corridor offset by a decline in volumes in the Vancouver and USA/MEX corridors. CP system wide loads on wheels now at 5,980 and 10% above the trailing 30-day average.
- Vancouver currently at 7,114, decreased slightly by 1% (-38) overnight, now 7% above the trailing 30-day average.
- The Prince Rupert pipeline currently at 1,659, rose for the third consecutive day, up 7% (+107) overnight, and 12% above the trailing 30-day average.
- Thunder Bay volumes increased significantly by 19% (+325) overnight and have now increased for the fifth consecutive day - now at 2,046 and 20% above the trailing 30-day average, with 76% of traffic moving on CP.

Hopper Car Rationing

- No hopper car rationing was reported for either CN or CP in week 12.

Loads Not Moving

- **The count of cars not moving for 48+ hours gained for the third consecutive day, up 12% (+258) overnight, marking higher counts on both CN and CP. Idle car counts now at 2,372 and 9% above the trailing 30-day average.**
- CN
 - **The count of idle cars for 48+ hours increased for the third consecutive day, up 26% (+237) overnight - now at 1,163 cars.**
 - The number of cars idle for 4+ days surged by 136% (+210) overnight - now at 364 cars.
 - The count of cars not moving for 7+ days increased significantly by 48% (+21) overnight - currently at 65 cars.
 - Vancouver represents 45% of all idle cars.
 - In total 59% of all idle cars are dwelling at origin locations.
- CP
 - **CP idle car counts for 48+ hours increased marginally by 2% (+21) overnight - currently at 1,209 cars.**

- The number of cars idle for 4+ days declined 10% (-61) overnight - presently at 533 cars.
- The number of cars idle for 7+ days decreased significantly by 60% (-114) overnight - presently at 76 cars.
- Vancouver accounts for 54% of all idle cars.
- In total 76% of all idle cars are dwelling at origin locations.

Port Performance

- CN and CP reported a total of 1,089 cars unloaded at the three major ports, now 12% below the trailing 30 day-average. Week 13 unloads concluded behind last week's pace by around 1,500 unloads, marking lower unloads across all three major ports - Vancouver, Thunder Bay and Prince Rupert.
- Vancouver
 - 893 unloads reported by CN and CP at the Port of Vancouver; CN - 394 and CP - 499. Week 13 unloads finished behind last week's performance by more than 650 unloads.
 - There are 1,600 cars on site at Vancouver with more than 1,050 cars arriving at the port in the last 24 hours.
 - CN and CP have 1,550 cars in British Columbia en route to Vancouver, with more than 900 cars at Kamloops and west, and 66% of traffic moving on CN.
- Prince Rupert
 - Prince Rupert reported 147 unloads, ended behind last week's unloads by 250 unloads.
 - Loads on wheels now above 1,000 cars - presently at 1,659 cars.
 - There are 400 cars west of Jasper en route to Prince Rupert.
 - There are 200 cars on site at Prince Rupert with 100 cars arriving at the port in the last 24 hours. Given the structure of the pipeline, there appears to be sufficient cars available to support unloads in the next few days.
- Thunder Bay
 - 49 unloads were reported at Thunder Bay yesterday. Week 13 unloads finished behind last week's pace by more than 550 unloads.
 - There are 900 cars on site at Thunder Bay with around 500 cars arriving at the port in the prior 24 hours.
 - There are more than 350 cars en route to Thunder Bay from Winnipeg and east. Cars on hand and those en route should support unloads in the next few days.

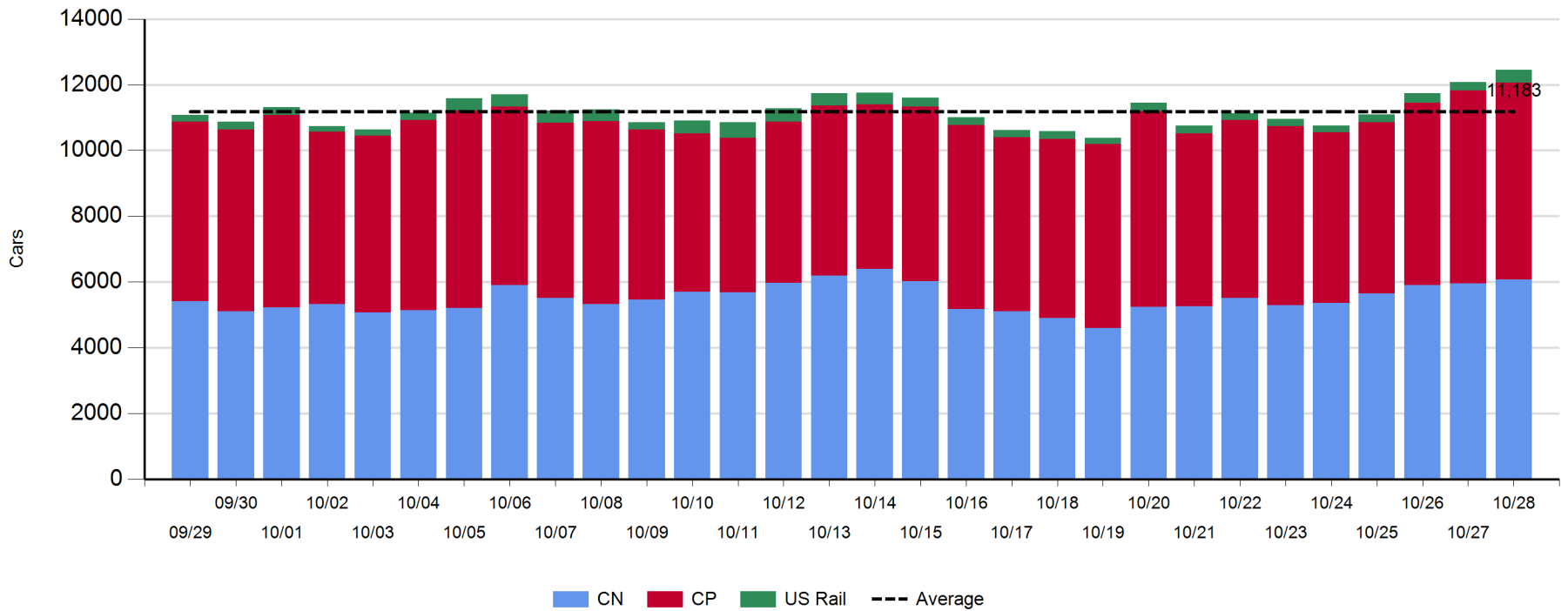
Daily Loads on Wheels - 10/28/2018

| | E Canada | Prince Rupert | Thunder Bay | USA/MEX | Vancouver | Total |
|------------|----------|---------------|-------------|---------|-----------|--------|
| CN | 235 | 1,659 | 483 | 186 | 3,512 | 6,075 |
| CP | 218 | | 1,563 | 617 | 3,582 | 5,980 |
| Short Line | 9 | | | | 20 | 29 |
| US Rail | | | | 362 | | 362 |
| | 462 | 1,659 | 2,046 | 1,165 | 7,114 | 12,446 |

Change in Loads on Wheels - Prior 24 Hours

| | E Canada | Prince Rupert | Thunder Bay | USA/MEX | Vancouver | Total |
|------------|----------|---------------|-------------|---------|-----------|-------|
| CN | -37 | 107 | 89 | -56 | 20 | 123 |
| CP | 0 | | 236 | -52 | -70 | 114 |
| Short Line | 1 | | | | 12 | 13 |
| US Rail | | | | 117 | | 117 |
| | -36 | 107 | 325 | 9 | -38 | 367 |

Loads on Wheels - Prior 30 Days

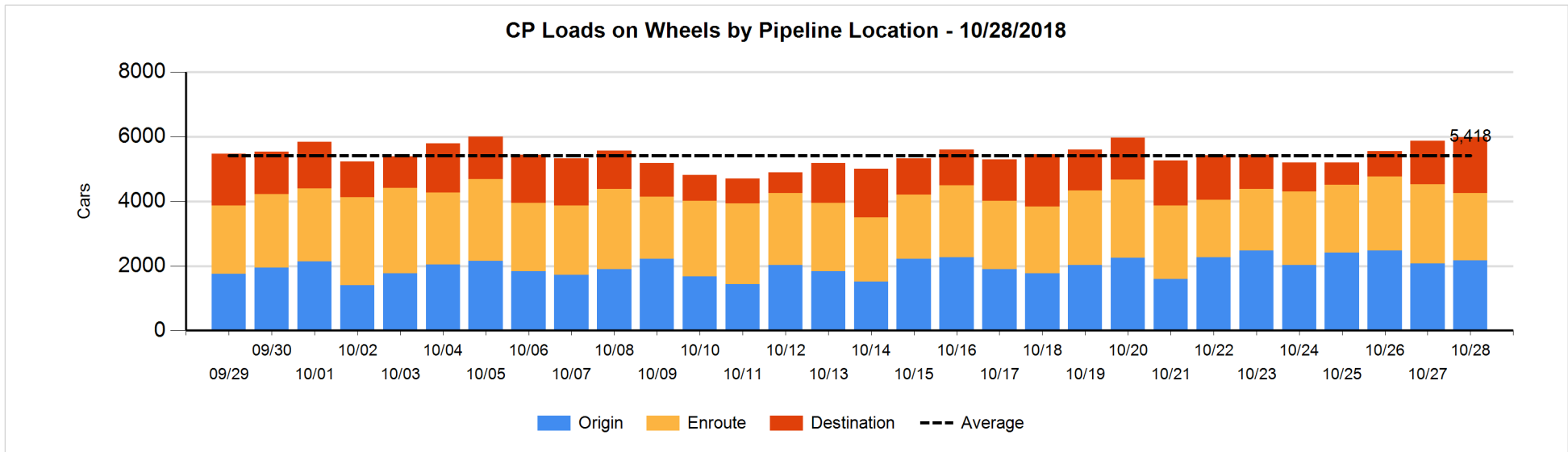
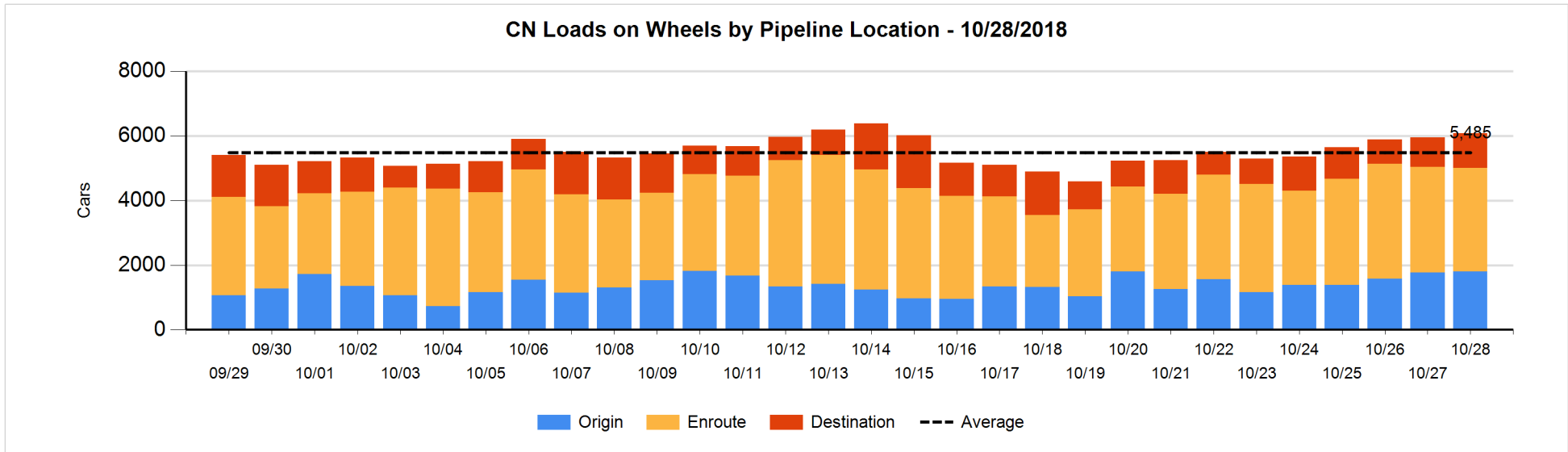


Daily Loads on Wheels By Pipeline Location - 10/28/2018

| | E Canada | Prince Rupert | Thunder Bay | USA/MEX | Vancouver | Total |
|----------------------|----------|---------------|-------------|---------|-----------|-------|
| CN | | | | | | |
| Origin | 30 | 639 | 104 | 38 | 989 | 1,800 |
| Enroute | 119 | 822 | 251 | 126 | 1,896 | 3,214 |
| Destination | 86 | 198 | 128 | 22 | 627 | 1,061 |
| | 235 | 1,659 | 483 | 186 | 3,512 | 6,075 |
| CP | | | | | | |
| Origin | 86 | | 409 | 406 | 1,267 | 2,168 |
| Enroute | 132 | | 377 | 206 | 1,368 | 2,083 |
| Destination | | | 777 | 5 | 947 | 1,729 |
| | 218 | | 1,563 | 617 | 3,582 | 5,980 |
| US Rail / Short Line | | | | | | |
| Origin | | | | | | |
| Enroute | 6 | | | 140 | | 146 |
| Destination | 3 | | | 222 | 20 | 245 |
| | 9 | | | 362 | 20 | 391 |

Change in Daily Loads on Wheels By Pipeline Location - Prior 24 Hours

| | E Canada | Prince Rupert | Thunder Bay | USA/MEX | Vancouver | Total |
|----------------------|----------|---------------|-------------|---------|-----------|-------|
| CN | | | | | | |
| Origin | 0 | -14 | 1 | 0 | 45 | 32 |
| Enroute | -58 | 166 | 103 | -26 | -236 | -51 |
| Destination | 21 | -45 | -15 | -30 | 211 | 142 |
| | -37 | 107 | 89 | -56 | 20 | 123 |
| CP | | | | | | |
| Origin | 0 | | 75 | -59 | 80 | 96 |
| Enroute | 0 | | -285 | 7 | -96 | -374 |
| Destination | | | 446 | 0 | -54 | 392 |
| | 0 | | 236 | -52 | -70 | 114 |
| US Rail / Short Line | | | | | | |
| Origin | | | | | | |
| Enroute | 1 | | | 49 | | 50 |
| Destination | 0 | | | 68 | 12 | 80 |
| | 1 | | | 117 | 12 | 130 |

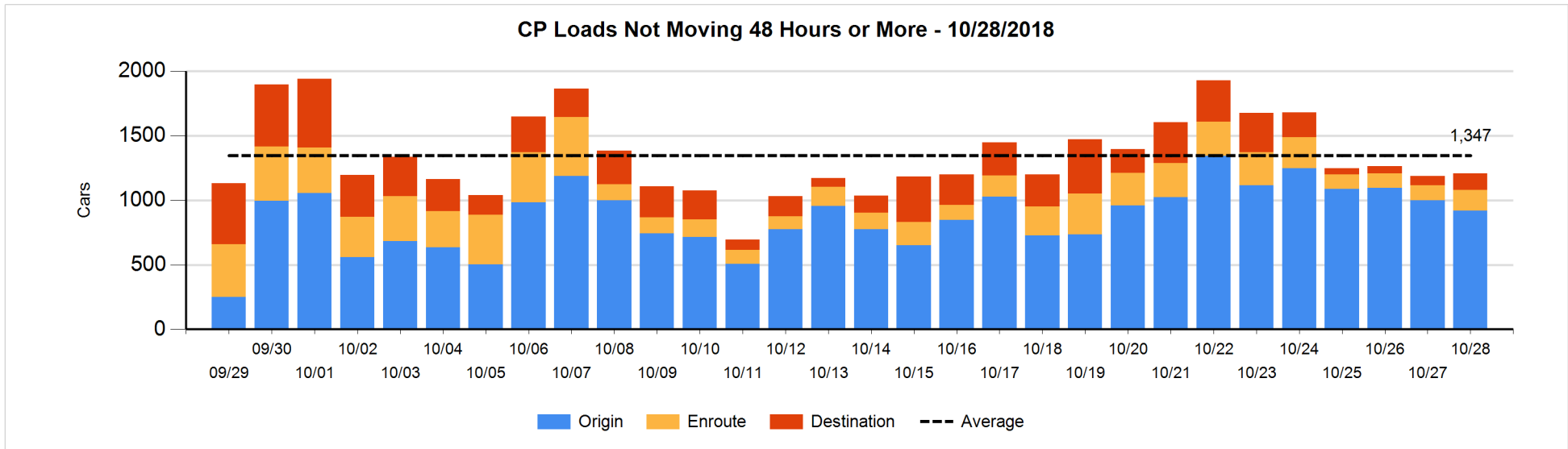
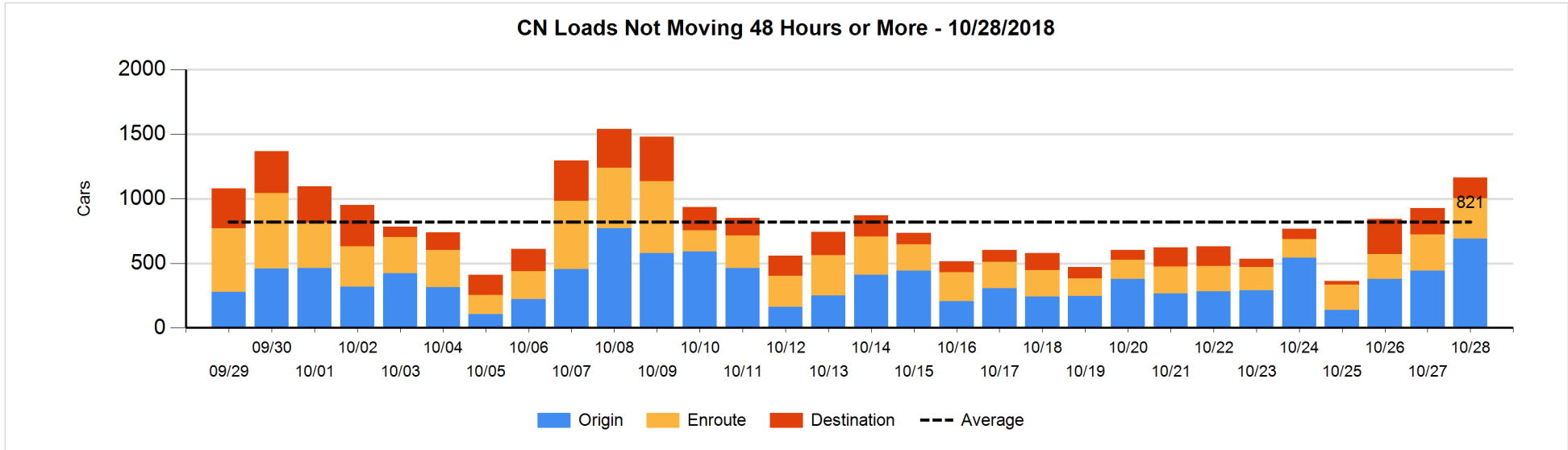


Loads Not Moving 48 Hours or More - 10/28/2018

| | E Canada | Prince Rupert | Thunder Bay | USA/MEX | Vancouver | Total |
|-----------------------------|----------|---------------|-------------|---------|-----------|-------|
| CN | | | | | | |
| Origin | 7 | 240 | | 28 | 414 | 689 |
| Enroute | 8 | 160 | | 45 | 101 | 314 |
| Destination | 32 | 96 | 3 | 16 | 13 | 160 |
| | 47 | 496 | 3 | 89 | 528 | 1163 |
| CP | | | | | | |
| Origin | 33 | | 91 | 305 | 489 | 918 |
| Enroute | 4 | | 21 | 68 | 67 | 160 |
| Destination | | | 34 | 5 | 92 | 131 |
| | 37 | | 146 | 378 | 648 | 1209 |
| US Rail / Short Line | | | | | | |
| Origin | | | | | | |
| Enroute | | | | 50 | | 50 |
| Destination | 3 | | | 92 | 4 | 99 |
| | 3 | | | 142 | 4 | 149 |

Change in Loads Not Moving 48 Hours or More - 10/28/2018

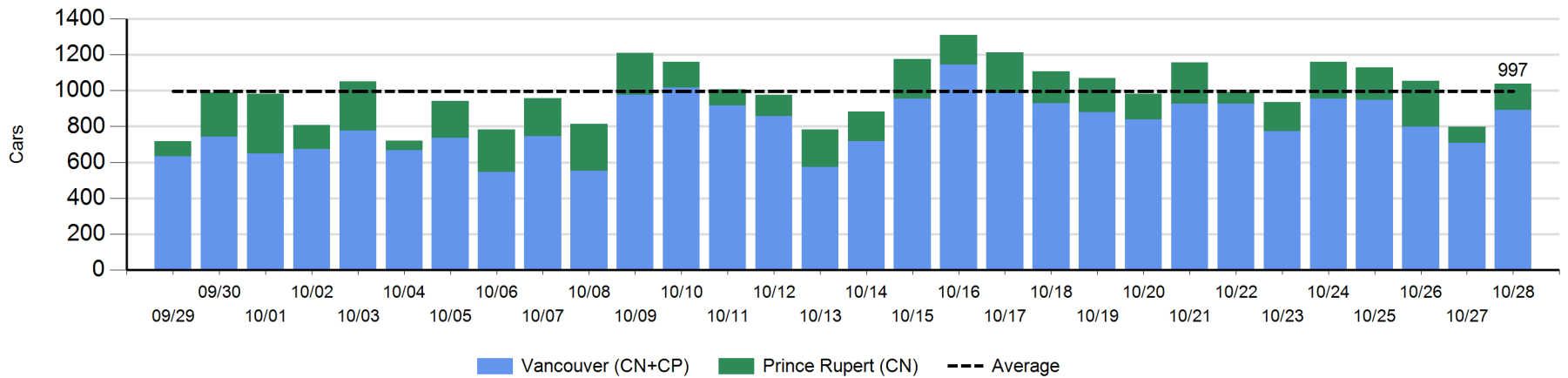
| | E Canada | Prince Rupert | Thunder Bay | USA/MEX | Vancouver | Total |
|-----------------------------|----------|---------------|-------------|---------|-----------|-------|
| CN | | | | | | |
| Origin | 7 | 39 | | 10 | 192 | 248 |
| Enroute | -29 | 70 | | -3 | -6 | 32 |
| Destination | 6 | -53 | 0 | 1 | 3 | -43 |
| | -16 | 56 | 0 | 8 | 189 | 237 |
| CP | | | | | | |
| Origin | 0 | | -92 | 98 | -89 | -83 |
| Enroute | -1 | | -1 | 7 | 40 | 45 |
| Destination | | | 21 | 0 | 38 | 59 |
| | -1 | | -72 | 105 | -11 | 21 |
| US Rail / Short Line | | | | | | |
| Origin | | | | | | |
| Enroute | | | | 10 | | 10 |
| Destination | 3 | | | 51 | -4 | 50 |
| | 3 | | | 61 | -4 | 60 |



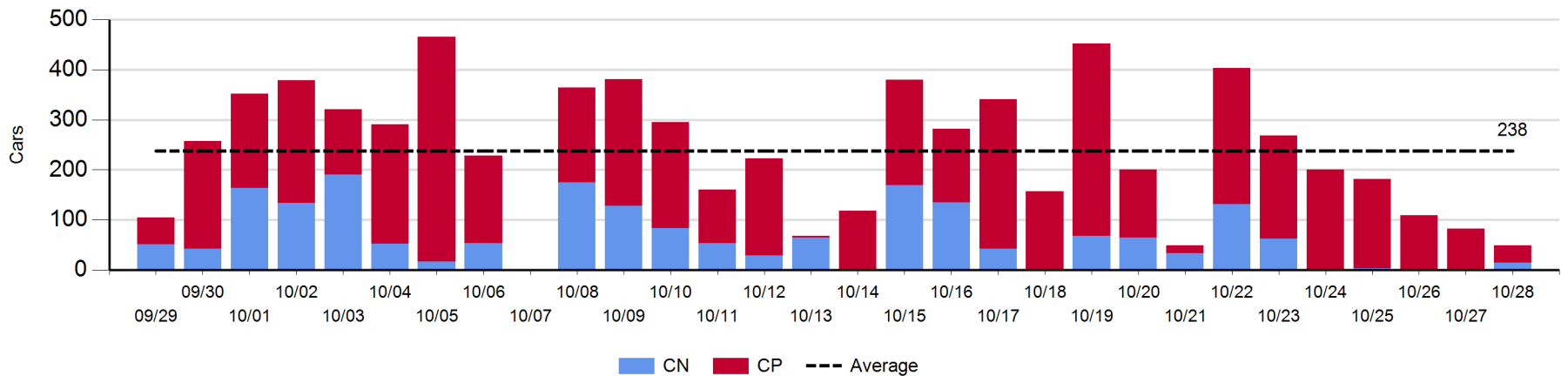
Port Unloads - 10/28/2018

| | Prince Rupert | Vancouver | West Coast Total | Thunder Bay | Total |
|----|---------------|-----------|------------------|-------------|-------|
| CN | 147 | 394 | 541 | 15 | 556 |
| CP | | 499 | 499 | 34 | 533 |
| | 147 | 893 | 1,040 | 49 | 1,089 |

West Coast Port Unloads - Prior 30 Days



Thunder Bay Port Unloads - Prior 30 Days



Port Terminal Status

Vancouver

Daily Activity for 10/28/2018

| | Cars Arrived | Cars Received in Interchange | Cars Delivered in Interchange | Cars Placed for Unloading | Loads on Wheels at Destination As of 10/28/2018 |
|-----|--------------|------------------------------|-------------------------------|---------------------------|---|
| CN | 400 | 242 | 121 | 268 | 627 |
| CP | 666 | 114 | 247 | 306 | 947 |
| SRY | | 12 | | 4 | 20 |

Port Unloads

| | 10/28 | 10/27 | Week To Date | Last Week |
|-----|-------|-------|--------------|-----------|
| CN | 394 | 335 | 2,848 | 3,235 |
| CP | 499 | 373 | 3,150 | 3,422 |
| SRY | | 6 | 25 | 33 |

Age Profile of Loaded Cars Waiting Placement for Unloading

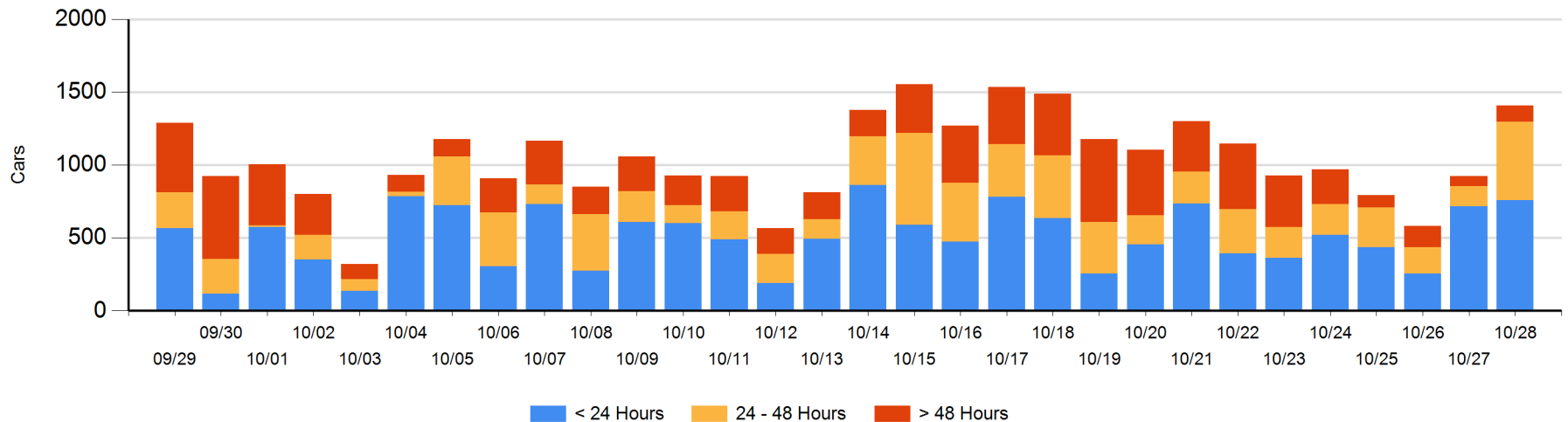
Today

| | < 24 Hrs | 24 - 48 Hrs | > 48-72 Hrs | > 72 Hrs | Total On Hand |
|-----|----------|-------------|-------------|----------|---------------|
| CN | 252 | 337 | 19 | 24 | 632 |
| CP | 506 | 200 | 41 | 30 | 777 |
| SRY | | | | | 0 |

Change in Last 24 Hours

| | < 24 Hrs | 24-48 Hrs | 48 - 72 Hrs | > 72 Hrs |
|-----|----------|-----------|-------------|----------|
| CN | -206 | 318 | 9 | 7 |
| CP | 248 | 82 | 34 | -7 |
| SRY | | | | |

Loaded Cars on Hand Vancouver Waiting for Placement - Last 30 Days All Railways



Port Terminal Status

Prince Rupert

Daily Activity for 10/28/2018

| | Cars Arrived | Cars Received in Interchange | Cars Delivered in Interchange | Cars Placed for Unloading | Loads on Wheels at Destination As of 10/28/2018 |
|----|--------------|------------------------------|-------------------------------|---------------------------|---|
| CN | 102 | | | 102 | 198 |

Port Unloads

| | 10/28 | 10/27 | Week To Date | Last Week |
|----|-------|-------|--------------|-----------|
| CN | 147 | 91 | 1,110 | 1,360 |

Age Profile of Loaded Cars Waiting Placement for Unloading

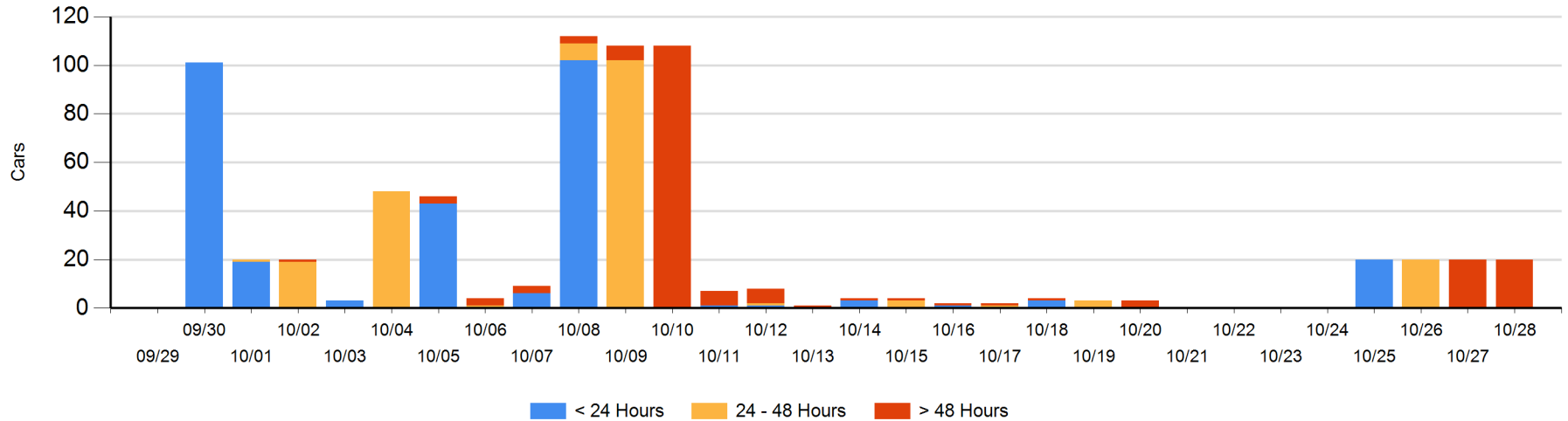
Today

| | < 24 Hrs | 24 - 48 Hrs | > 48-72 Hrs | > 72 Hrs | Total On Hand |
|----|----------|-------------|-------------|----------|---------------|
| CN | | | | 20 | 20 |

Change in Last 24 Hours

| | < 24 Hrs | 24-48 Hrs | 48 - 72 Hrs | > 72 Hrs |
|----|----------|-----------|-------------|----------|
| CN | | | -20 | 20 |

Loaded Cars on Hand Prince Rupert Waiting for Placement - Last 30 Days All Railways



Port Terminal Status

Thunder Bay

Daily Activity for 10/28/2018

| | Cars Arrived | Cars Received in Interchange | Cars Delivered in Interchange | Cars Placed for Unloading | Loads on Wheels at Destination As of 10/28/2018 |
|----|--------------|------------------------------|-------------------------------|---------------------------|---|
| CN | | | | 103 | 128 |
| CP | 480 | | | 137 | 777 |

Port Unloads

| | 10/28 | 10/27 | Week To Date | Last Week |
|----|-------|-------|--------------|-----------|
| CN | 15 | | 213 | 512 |
| CP | 34 | 83 | 1,083 | 1,350 |

Age Profile of Loaded Cars Waiting Placement for Unloading

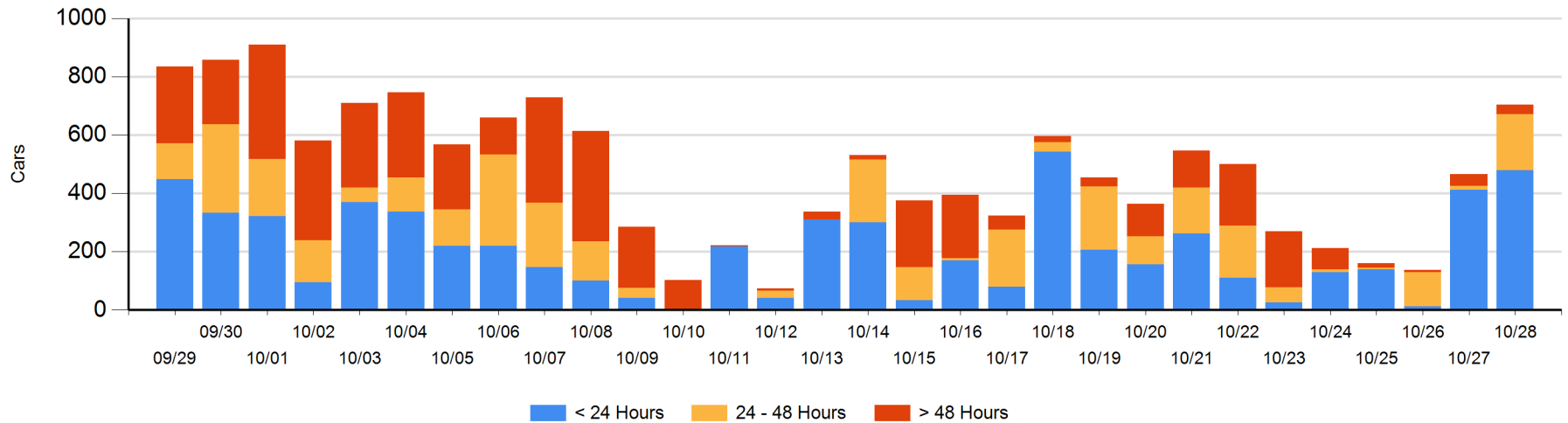
Today

| | < 24 Hrs | 24 - 48 Hrs | > 48-72 Hrs | > 72 Hrs | Total On Hand |
|----|----------|-------------|-------------|----------|---------------|
| CN | | 37 | | | 37 |
| CP | 480 | 155 | | 32 | 667 |

Change in Last 24 Hours

| | < 24 Hrs | 24-48 Hrs | 48 - 72 Hrs | > 72 Hrs |
|----|----------|-----------|-------------|----------|
| CN | -127 | 24 | | -1 |
| CP | 194 | 155 | -30 | 24 |

Loaded Cars on Hand Thunder Bay Waiting for Placement - Last 30 Days All Railways



Measurement Definitions

| | |
|---------------------------------|---|
| Loads on Wheels | <p>Count of loaded rail cars including all rail cars that have been released loaded at origin and have not been reported by the railway as unloaded at destination.</p> <p>Counts include all rail cars (hopper cars and boxcars) moving within a pipeline.</p> |
| Loads Not Moving | <p>Loaded rail cars for which the railways have not reported a movement event for 48 hours or more whether the rail car is at origin, enroute or at destination.</p> |
| Port Unloads | <p>Count of rail cars reported by railways as unloaded at the western port destinations of Vancouver, Prince Rupert and Thunder Bay.</p> <p>Unload counts include all rail cars (hopper cars and boxcars) unloaded by all receivers including major port terminals, transloaders and other receivers.</p> |
| Cars Arrived | <p>Count of rail cars reported as arrived at the destination railway terminal.</p> |
| Cars Received in Interchange | <p>Count of rail cars received in interchange by each railway within a destination railway terminal. Interchange activity is tracked for the Vancouver and Thunder Bay pipelines as applicable.</p> |
| Cars Delivered in Interchange | <p>Count of rail cars delivered in interchange by each railway within a destination railway terminal. Interchange activity is tracked for the Vancouver and Thunder Bay pipelines as applicable.</p> |
| Cars Placed for Unloading | <p>Count of rail cars reported by the railways as placed loaded at the receiver's facility for unloading.</p> |
| Loads on Wheels at Destination | <p>Count of rail cars that remain under load within the destination railway terminal including rail cars that have been reported as placed for unloading but not yet reported as unloaded.</p> |
| Waiting Placement for Unloading | <p>Count of rail cars that have been reported as arrived at the destination railway terminal but not reported as placed for unloading by the railway.</p> <p>For the Ports of Vancouver, Prince Rupert and Thunder Bay the count of rail cars waiting placement for unloading is categorized by age – i.e. the elapsed time from arrival at destination to the current report date.</p> |