

SPEED READ

- Loads on wheels decreased overnight, reflecting higher CP volumes offset by a decline in CN volumes. On a net basis, volumes declined due to reduced volumes across all corridors other than E. Canada.
- Network fluidity deteriorated overnight, led by a rise in idle car counts on both CN and CP by 7% (+85) and 41% (+486), respectively. The total count of cars for 4+ days on both railways increased 27% (+233) overnight - presently at 1,108 cars.
- One day in Week 14 unloads now ahead of prior week's performance by 10 unloads, reflecting an improvement in week over week performance at Prince Rupert offset by lower unloads at Thunder Bay and Vancouver.

Loads on Wheels

- Loads on wheels decreased 2% (-266) overnight, due to higher volumes on CP offset by lower volumes on CN - combined total at 12,202 and 9% above the trailing 30-day average.
- On a net basis, the decline in loads on wheels indicates reduced volumes across all corridors other than E. Canada.
- CN volumes fell 8% (-507) overnight, with reduced volumes in the Vancouver, Prince Rupert and Thunder Bay corridors offset by higher traffic in the E. Canada and USA/MEX corridors. System wide CN loads on wheels presently at 5,577 and 2% above the trailing 30-day average.
- CP volumes gained for the fifth consecutive day, up 7% (+416) overnight, driven by a rise in volumes in the Vancouver and E. Canada corridors offset by a decline in traffic in the USA/MEX and Thunder Bay corridors. CP system wide loads on wheels now at 6,410, the highest seen in the last 30 days, and 18% above the trailing 30-day average.
- Vancouver presently at 7,076, declined slightly by 1% (-60) overnight, now 6% above the trailing 30-day average.
- The Prince Rupert pipeline currently at 1,608, decreased 3% (-51) overnight, and 9% above the trailing 30-day average.
- Thunder Bay volumes fell marginally by 2% (-39) overnight - currently at 2,008 and 18% above the trailing 30-day average, with 76% of traffic moving on CP.

Hopper Car Rationing

- No hopper car rationing was reported for either CN or CP in week 12.

Loads Not Moving

- **The count of cars not moving for 48+ hours increased for the fourth consecutive day, up 24% (+571) overnight, reflecting higher counts on both CN and CP. Idle car counts presently at 2,939 and 34% above the trailing 30-day average.**
- CN
 - **The count of idle cars for 48+ hours gained for four consecutive days, up 7% (+85) overnight - presently at 1,253 cars.**
 - The number of cars idle for 4+ days increased for the third consecutive day, up 75% (+272) overnight - presently at 636 cars.
 - The count of cars not moving for 7+ days increased for the third consecutive day, up 25% (+16) overnight - presently at 81 cars.
 - Vancouver represents 45% of all idle cars.
 - In total 58% of all idle cars are dwelling at origin locations.
- CP
 - **CP idle car counts for 48+ hours rose 41% (+486) overnight - presently at 1,686 cars.**
 - The number of cars idle for 4+ days declined for the third consecutive day, down 8% (-39) overnight - now at 472 cars.

- The number of cars idle for 7+ days increased 11% (+8) overnight - now at 84 cars.
- Vancouver accounts for 58% of all idle cars.
- In total 72% of all idle cars are dwelling at origin locations.

Port Performance

- CN and CP reported a total of 1,404 cars unloaded at the three major ports, now 12% above the trailing 30-day average. One day in Week 14 unloads now ahead of last week's pace by 10 unloads, reflecting higher unloads at Prince Rupert offset by lower unloads at Thunder Bay and Vancouver.
- Vancouver
 - 901 unloads reported by CN and CP at the Port of Vancouver; CN - 405 and CP - 496. One day in Week 14 unloads are tracking behind last week's performance by 24 unloads.
 - There are about 1,550 cars on site at Vancouver with 850 cars arriving at the port in the last 24 hours.
 - CN and CP have more than 1,400 cars in British Columbia en route to Vancouver, with 600 cars at Kamloops and west, and 53% of traffic moving on CN.
- Prince Rupert
 - Prince Rupert reported 236 unloads, now ahead of last week's unloads after one day by more than 150 unloads.
 - Loads on wheels now above 1,000 cars - presently at 1,608 cars.
 - There are more than 250 cars west of Jasper en route to Prince Rupert.
 - There are 150 cars on site at Prince Rupert with 200 cars arriving at the port in the last 24 hours. Given the structure of the pipeline, there appears to be sufficient cars available to support unloads in the next few days.
- Thunder Bay
 - 267 unloads were reported at Thunder Bay yesterday. One day in Week 14 unloads are tracking behind last week's pace by fewer than 150 unloads.
 - There are more than 850 cars on site at Thunder Bay with more than 200 cars arriving at the port in the prior 24 hours.
 - There are about 350 cars en route to Thunder Bay from Winnipeg and east. Cars on hand and those en route should support unloads in the next few days.

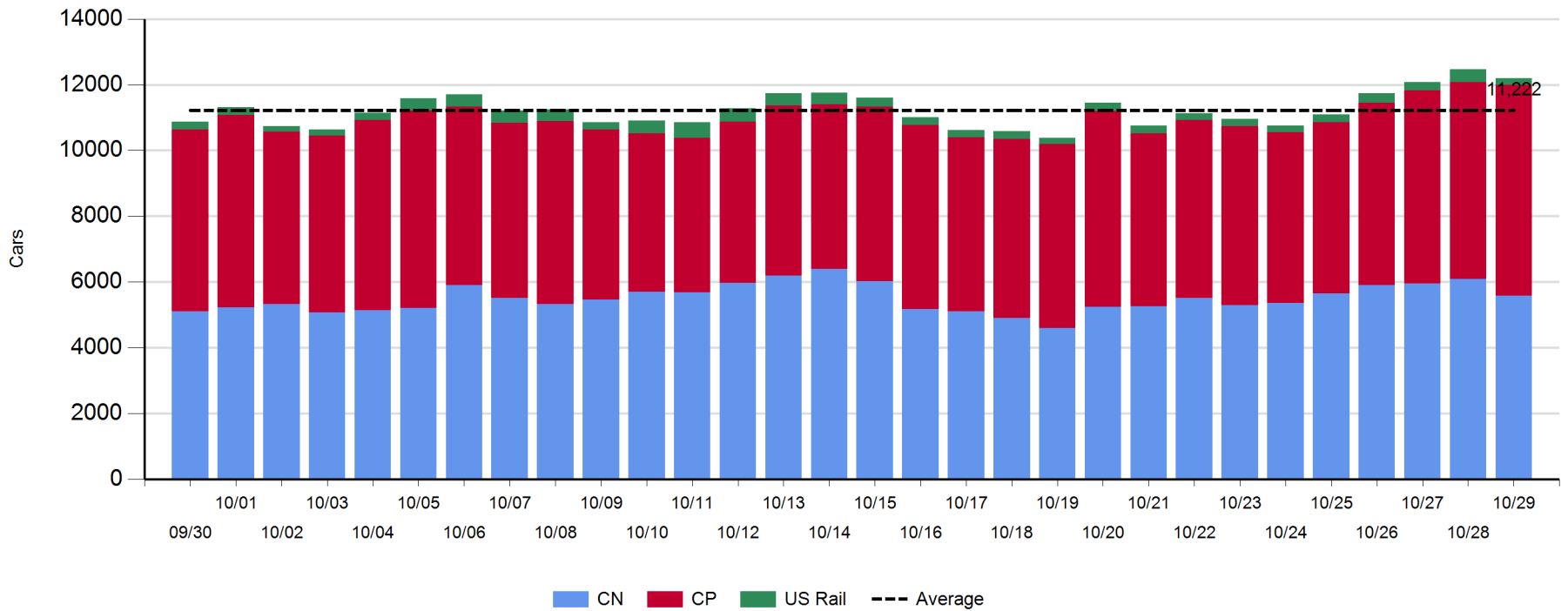
Daily Loads on Wheels - 10/29/2018

	E Canada	Prince Rupert	Thunder Bay	USA/MEX	Vancouver	Total
CN	282	1,608	476	228	2,983	5,577
CP	236		1,532	573	4,069	6,410
Short Line	2				24	26
US Rail				189		189
	520	1,608	2,008	990	7,076	12,202

Change in Loads on Wheels - Prior 24 Hours

	E Canada	Prince Rupert	Thunder Bay	USA/MEX	Vancouver	Total
CN	47	-51	-8	42	-537	-507
CP	18		-31	-44	473	416
Short Line	-7				4	-3
US Rail				-172		-172
	58	-51	-39	-174	-60	-266

Loads on Wheels - Prior 30 Days

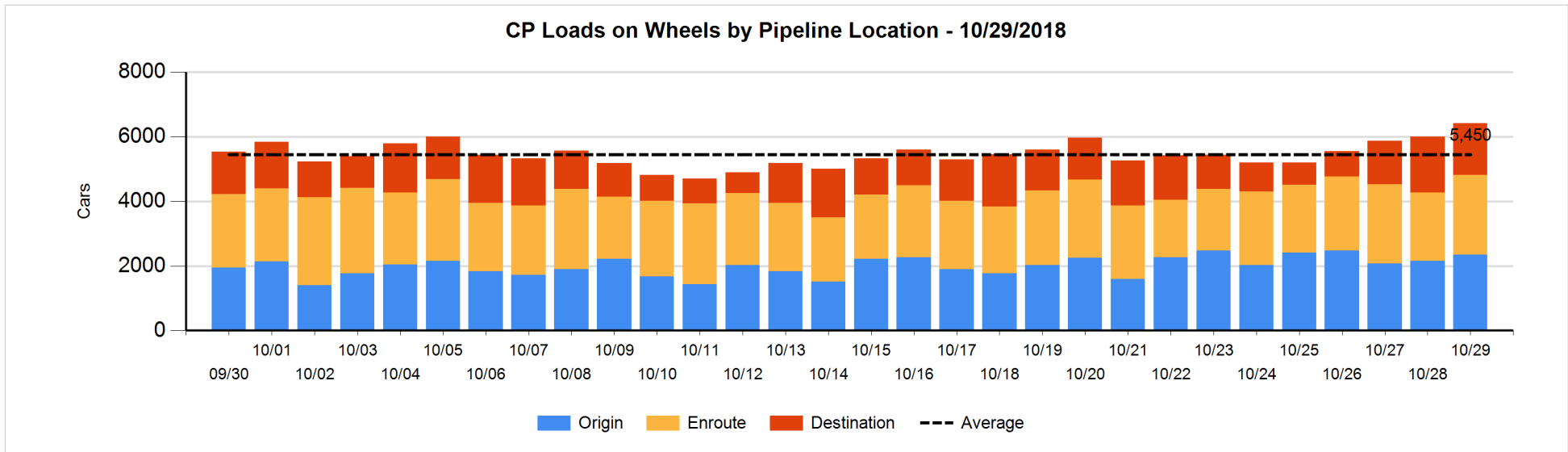
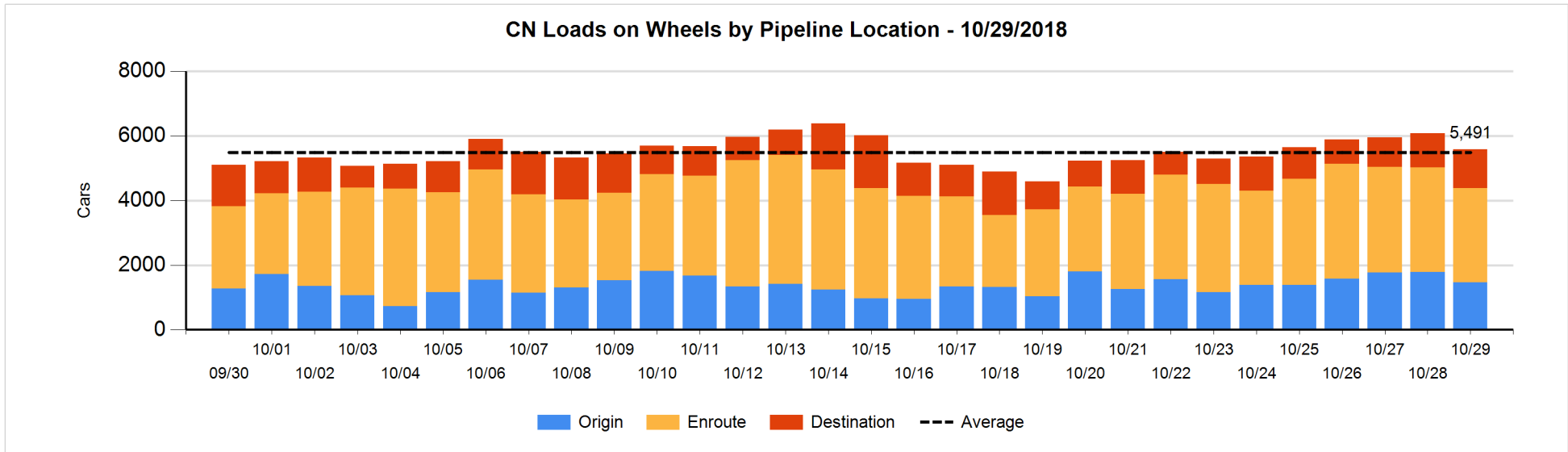


Daily Loads on Wheels By Pipeline Location - 10/29/2018

	E Canada	Prince Rupert	Thunder Bay	USA/MEX	Vancouver	Total
CN						
Origin	52	569	101	52	688	1,462
Enroute	98	886	163	130	1,642	2,919
Destination	132	153	212	46	653	1,196
	282	1,608	476	228	2,983	5,577
CP						
Origin	84		226	407	1,633	2,350
Enroute	70		655	166	1,579	2,470
Destination	82		651		857	1,590
	236		1,532	573	4,069	6,410
US Rail / Short Line						
Origin						
Enroute	2			104		106
Destination				85	24	109
	2			189	24	215

Change in Daily Loads on Wheels By Pipeline Location - Prior 24 Hours

	E Canada	Prince Rupert	Thunder Bay	USA/MEX	Vancouver	Total
CN						
Origin	22	-70	-3	14	-281	-318
Enroute	-21	64	-89	4	-281	-323
Destination	46	-45	84	24	25	134
	47	-51	-8	42	-537	-507
CP						
Origin	-2		-183	1	374	190
Enroute	-62		278	-40	189	365
Destination	82		-126	-5	-90	-139
	18		-31	-44	473	416
US Rail / Short Line						
Origin						
Enroute	-4			-36		-40
Destination	-3			-136	4	-135
	-7			-172	4	-175

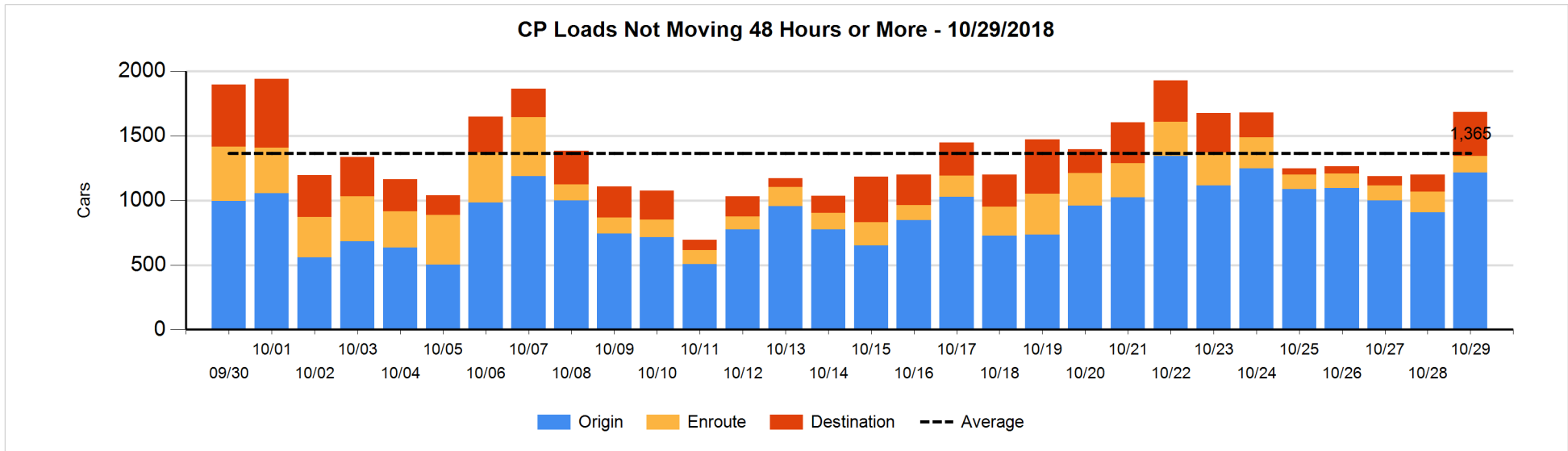
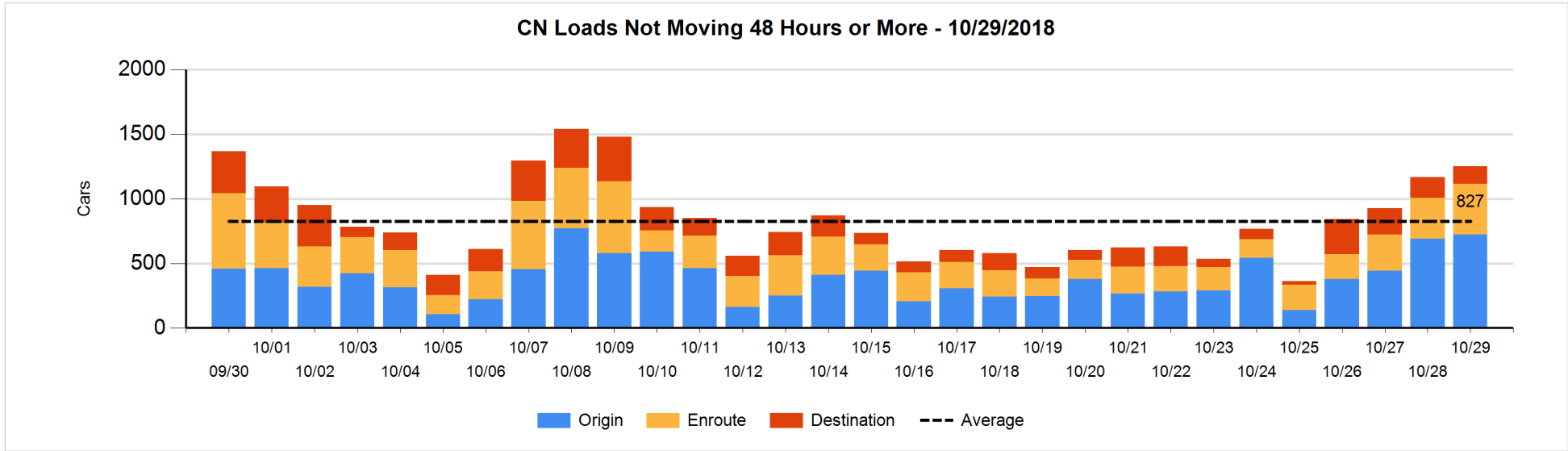


Loads Not Moving 48 Hours or More - 10/29/2018

	E Canada	Prince Rupert	Thunder Bay	USA/MEX	Vancouver	Total
CN						
Origin		294		22	407	723
Enroute	2	196	2	44	150	394
Destination	16	96	1	12	11	136
	18	586	3	78	568	1253
CP						
Origin	56		55	405	700	1216
Enroute	4		22	31	72	129
Destination			127		214	341
	60		204	436	986	1686
US Rail / Short Line						
Origin						
Enroute				23		23
Destination				31	2	33
				54	2	56

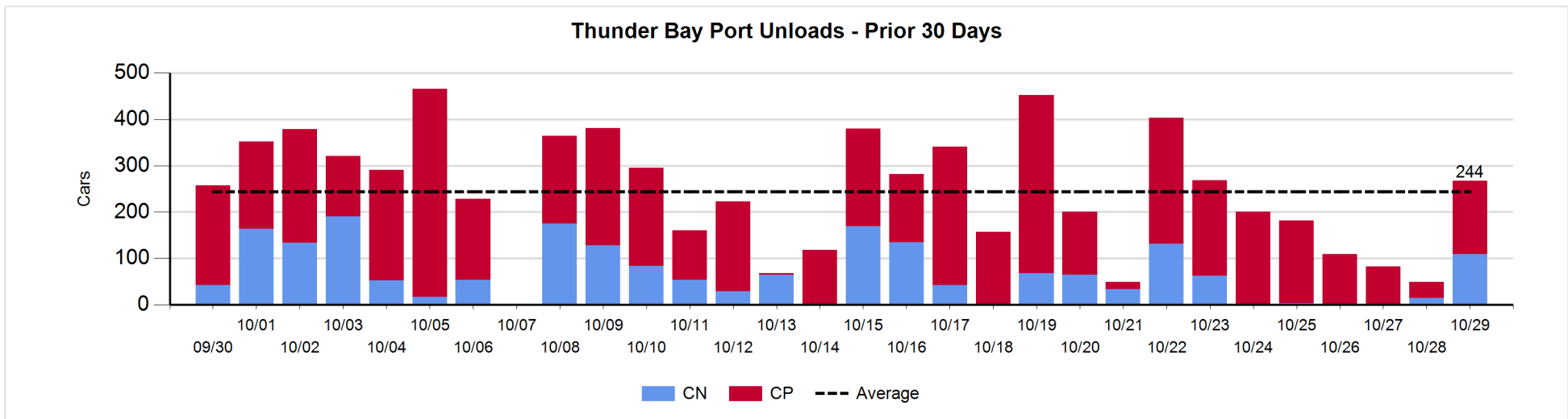
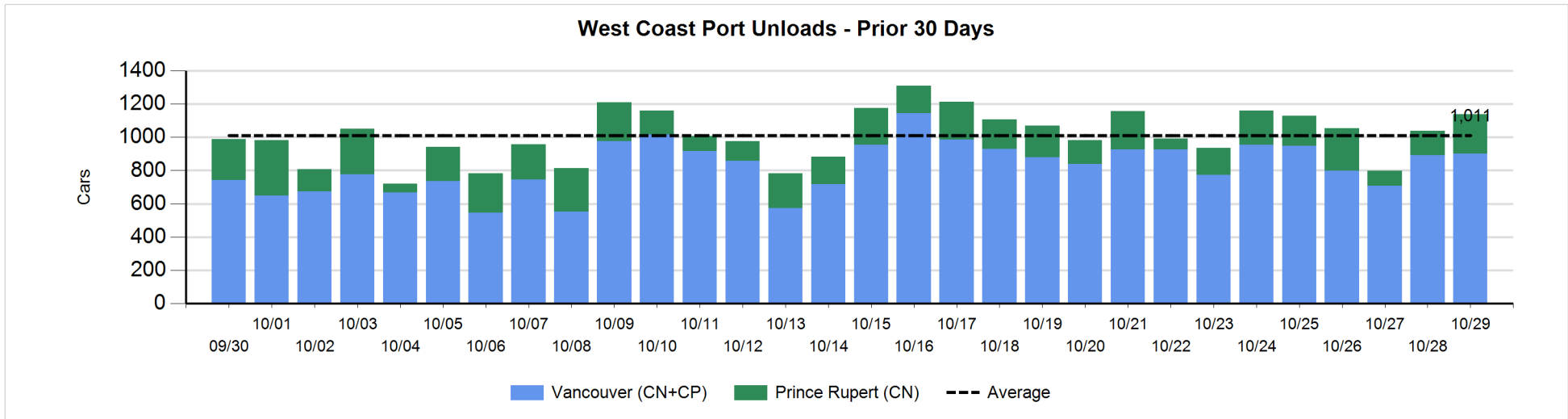
Change in Loads Not Moving 48 Hours or More - 10/29/2018

	E Canada	Prince Rupert	Thunder Bay	USA/MEX	Vancouver	Total
CN						
Origin	-7	54		-6	-10	31
Enroute	-6	36	1	-1	49	79
Destination	-16	0	-2	-4	-3	-25
	-29	90	-1	-11	36	85
CP						
Origin	23		-36	100	220	307
Enroute	0		1	-37	5	-31
Destination			93	-5	122	210
	23		58	58	347	486
US Rail / Short Line						
Origin						
Enroute				-27		-27
Destination	-3			-60	-2	-65
	-3			-87	-2	-92



Port Unloads - 10/29/2018

	Prince Rupert	Vancouver	West Coast Total	Thunder Bay	Total
CN	236	405	641	109	750
CP		496	496	158	654
	236	901	1,137	267	1,404



Port Terminal Status

Vancouver

Daily Activity for 10/29/2018

	Cars Arrived	Cars Received in Interchange	Cars Delivered in Interchange	Cars Placed for Unloading	Loads on Wheels at Destination As of 10/29/2018
CN	556	12	138	496	653
CP	287	136	19	490	857
SRY		9		1	24

Port Unloads

	10/29	10/28	Week To Date	Last Week
CN	405	394	405	2,848
CP	496	499	496	3,150
SRY	5		5	25

Age Profile of Loaded Cars Waiting Placement for Unloading

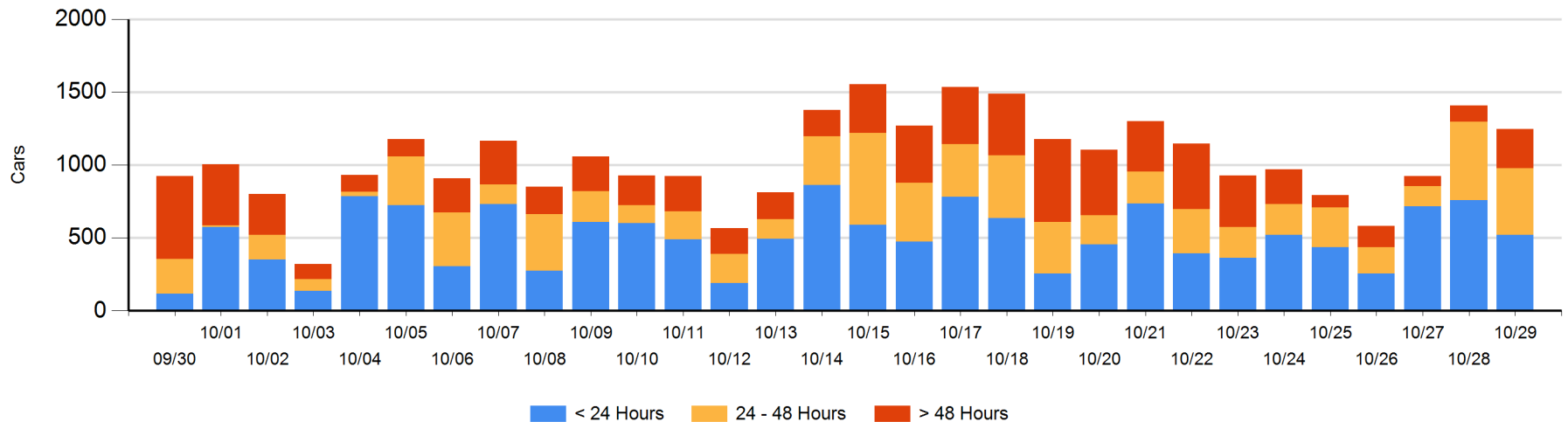
Today

	< 24 Hrs	24 - 48 Hrs	> 48-72 Hrs	> 72 Hrs	Total On Hand
CN	345	252	196	19	812
CP	177	205	7	46	435
SRY					0

Change in Last 24 Hours

	< 24 Hrs	24-48 Hrs	48 - 72 Hrs	> 72 Hrs
CN	93	-85	177	-5
CP	-329	5	-34	16
SRY				

Loaded Cars on Hand Vancouver Waiting for Placement - Last 30 Days All Railways



Port Terminal Status

Prince Rupert

Daily Activity for 10/29/2018

	Cars Arrived	Cars Received in Interchange	Cars Delivered in Interchange	Cars Placed for Unloading	Loads on Wheels at Destination As of 10/29/2018
CN	191			191	153

Port Unloads

	10/29	10/28	Week To Date	Last Week
CN	236	147	236	1,110

Age Profile of Loaded Cars Waiting Placement for Unloading

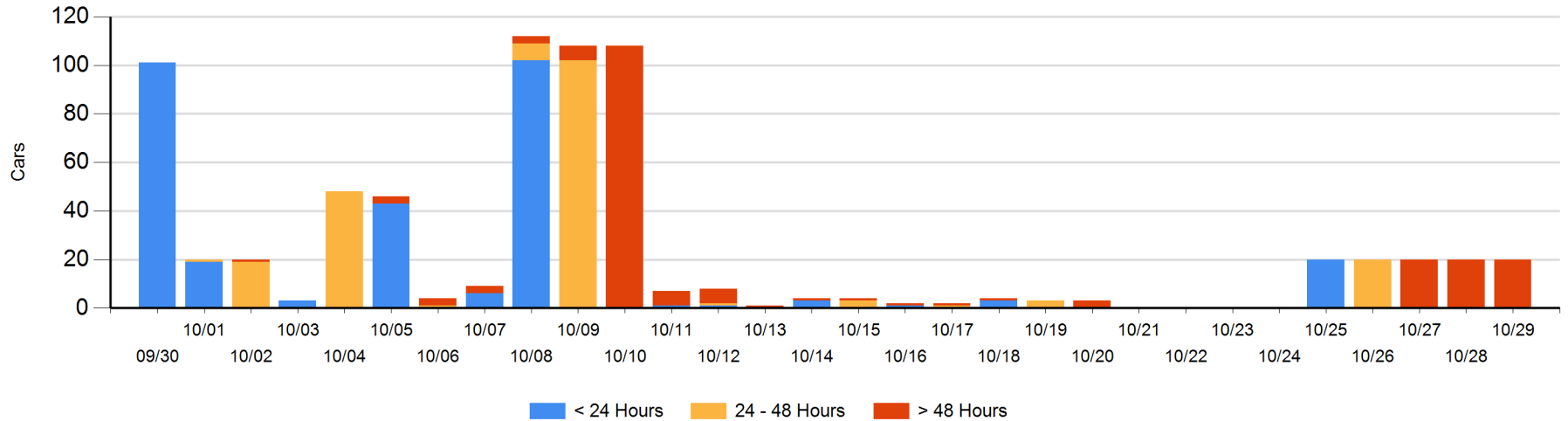
Today

	< 24 Hrs	24 - 48 Hrs	> 48-72 Hrs	> 72 Hrs	Total On Hand
CN				20	20

Change in Last 24 Hours

	< 24 Hrs	24-48 Hrs	48 - 72 Hrs	> 72 Hrs
CN				0

Loaded Cars on Hand Prince Rupert Waiting for Placement - Last 30 Days All Railways



Port Terminal Status

Thunder Bay

Daily Activity for 10/29/2018

	Cars Arrived	Cars Received in Interchange	Cars Delivered in Interchange	Cars Placed for Unloading	Loads on Wheels at Destination As of 10/29/2018
CN	193			75	212
CP	26			86	651

Port Unloads

	10/29	10/28	Week To Date	Last Week
CN	109	15	109	213
CP	158	34	158	1,083

Age Profile of Loaded Cars Waiting Placement for Unloading

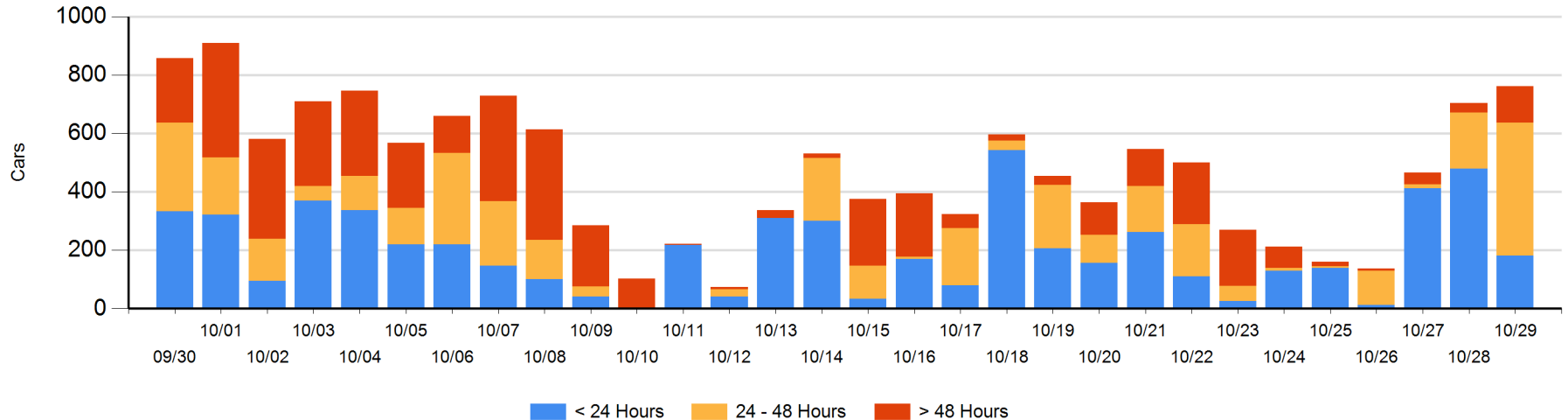
Today

	< 24 Hrs	24 - 48 Hrs	> 48-72 Hrs	> 72 Hrs	Total On Hand
CN	155				155
CP	26	455	121	5	607

Change in Last 24 Hours

	< 24 Hrs	24-48 Hrs	48 - 72 Hrs	> 72 Hrs
CN	155	-37		
CP	-454	300	121	-27

Loaded Cars on Hand Thunder Bay Waiting for Placement - Last 30 Days All Railways



Measurement Definitions

Loads on Wheels	<p>Count of loaded rail cars including all rail cars that have been released loaded at origin and have not been reported by the railway as unloaded at destination.</p> <p>Counts include all rail cars (hopper cars and boxcars) moving within a pipeline.</p>
Loads Not Moving	<p>Loaded rail cars for which the railways have not reported a movement event for 48 hours or more whether the rail car is at origin, enroute or at destination.</p>
Port Unloads	<p>Count of rail cars reported by railways as unloaded at the western port destinations of Vancouver, Prince Rupert and Thunder Bay.</p> <p>Unload counts include all rail cars (hopper cars and boxcars) unloaded by all receivers including major port terminals, transloaders and other receivers.</p>
Cars Arrived	<p>Count of rail cars reported as arrived at the destination railway terminal.</p>
Cars Received in Interchange	<p>Count of rail cars received in interchange by each railway within a destination railway terminal. Interchange activity is tracked for the Vancouver and Thunder Bay pipelines as applicable.</p>
Cars Delivered in Interchange	<p>Count of rail cars delivered in interchange by each railway within a destination railway terminal. Interchange activity is tracked for the Vancouver and Thunder Bay pipelines as applicable.</p>
Cars Placed for Unloading	<p>Count of rail cars reported by the railways as placed loaded at the receiver's facility for unloading.</p>
Loads on Wheels at Destination	<p>Count of rail cars that remain under load within the destination railway terminal including rail cars that have been reported as placed for unloading but not yet reported as unloaded.</p>
Waiting Placement for Unloading	<p>Count of rail cars that have been reported as arrived at the destination railway terminal but not reported as placed for unloading by the railway.</p> <p>For the Ports of Vancouver, Prince Rupert and Thunder Bay the count of rail cars waiting placement for unloading is categorized by age – i.e. the elapsed time from arrival at destination to the current report date.</p>