

SPEED READ

- Loads on wheels decreased marginally overnight, reflecting a slight decline in both CN and CP volumes. On a net basis, volumes decreased due to lower traffic in the Thunder Bay, E. Canada and Vancouver corridors offset by higher traffic levels in the Prince Rupert and USA/MEX corridors.
- Network fluidity deteriorated overnight, led by an increase in idle car counts on CN and CP by 75% (+308) and 18% (-203), respectively. The total count of cars for 4+ days on both railways increased 3% (+24) overnight - currently at 722 cars.
- Three days in Week 7 unloads now ahead of prior week's performance by more than 900 unloads, marking improved week over week performance across all three major ports - Vancouver, Thunder Bay and Prince Rupert.

Loads on Wheels

- Loads on wheels decreased for the third consecutive day, down slightly (-31) overnight, due to lower volumes on both CN and CP - combined total at 9,035 and 6% above the trailing 30-day average.
- On a net basis, the decline in loads on wheels reflects reduced traffic in the Thunder Bay, E. Canada and Vancouver corridors offset by higher traffic levels in the Prince Rupert and USA/MEX corridors.
- CN volumes fell marginally by 1% (-33) overnight, with lower volumes in the Thunder Bay, E. Canada and Vancouver corridors offset by higher traffic in the Prince Rupert and USA/MEX corridors. System wide CN loads on wheels currently at 4,468 and 9% above the trailing 30-day average.
- CP volumes fell for the third consecutive day, down 1% (-39) overnight, driven by declining volumes in the USA/MEX and E. Canada corridors offset by a rise in traffic levels in the Vancouver and Thunder Bay corridors. CP system wide loads on wheels presently at 4,251 and 3% above the trailing 30-day average.
- Vancouver presently at 4,704, was unchanged (-4) overnight, now 5% above the trailing 30-day average.
- The Prince Rupert pipeline currently at 1,169, increased significantly by 11% (+116) overnight and 10% above the trailing 30-day average.
- Thunder Bay volumes declined for three consecutive days, down 9% (-154) overnight - currently at 1,601 and 6% above the trailing 30-day average, with 70% of traffic moving on CP.

Hopper Car Rationing

- No hopper car rationing was reported for either CN or CP in week 6. For the current grain week (7), CN has rationed 100 hopper car orders.

Loads Not Moving

- **The count of cars not moving for 48+ hours increased 7% (+105) overnight, reflecting higher counts on CN offset by lower counts on CP. Idle car counts presently at 1,623 and 23% above the trailing 30-day average.**
- CN
 - **The count of idle cars for 48+ hours increased significantly by 75% (+308) overnight - currently at 718 cars.**
 - The number of cars idle for 4+ days decreased 25% (-37) overnight - currently at 114 cars.
 - The count of cars not moving for 7+ days gained 23% (+17) overnight - currently at 90 cars.
 - Vancouver represents 58% of all idle cars.
 - In total 42% of all idle cars are dwelling at origin locations.
- CP
 - **CP idle car counts for 48+ hours declined 18% (-203) overnight - currently at 905 cars.**
 - The number of cars idle for 4+ days gained 11% (+61) overnight - currently at 608 cars, the highest seen in the last 30 days.

- The number of cars idle for 7+ days rose 20% (+41) overnight - currently at 248 cars, the highest seen in the last 30 days.
- Vancouver accounts for 32% of all idle cars.
- In total 32% of all idle cars are dwelling at origin locations.

Port Performance

- CN and CP reported a total of 1,161 cars unloaded at the three major ports, now 20% above the trailing 30-day average. Three days in Week 7 unloads are tracking ahead of last week's pace by more than 900 unloads, marking higher unloads across all three major ports - Vancouver, Thunder Bay and Prince Rupert.
- Vancouver
 - 660 unloads reported by CN and CP at the Port of Vancouver; CN - 280 and CP - 380. Three days in Week 7 unloads are tracking ahead of last week's performance by 500 unloads.
 - There are 900 cars on site at Vancouver with 550 cars arriving at the port in the last 24 hours.
 - CN and CP have more than 1,000 cars in British Columbia en route to Vancouver, with 400 Kamloops and west and 61% of traffic currently moving on CP.
- Prince Rupert
 - Prince Rupert reported 193 unloads, now ahead of last week's unloads after three days by 50 unloads.
 - Loads on wheels now above 1,000 cars - currently at 1,169 cars.
 - There are 250 cars west of Jasper en route to Prince Rupert.
 - There are more than 50 cars on site at Prince Rupert with nearly 250 cars arriving at the port in the last 24 hours. Given the structure of the pipeline, there appears to be sufficient cars available to support unloads in the next few days.
- Thunder Bay
 - 308 unloads were reported at Thunder Bay yesterday. Three days in Week 7 unloads are tracking ahead of last week's pace by more than 350 unloads.
 - There are more than 1,000 cars on site at Thunder Bay with 350 cars arriving at the port in the prior 24 hours.
 - There are fewer than 300 cars en route to Thunder Bay from Winnipeg and east. Cars on hand and those en route for the balance of the week.

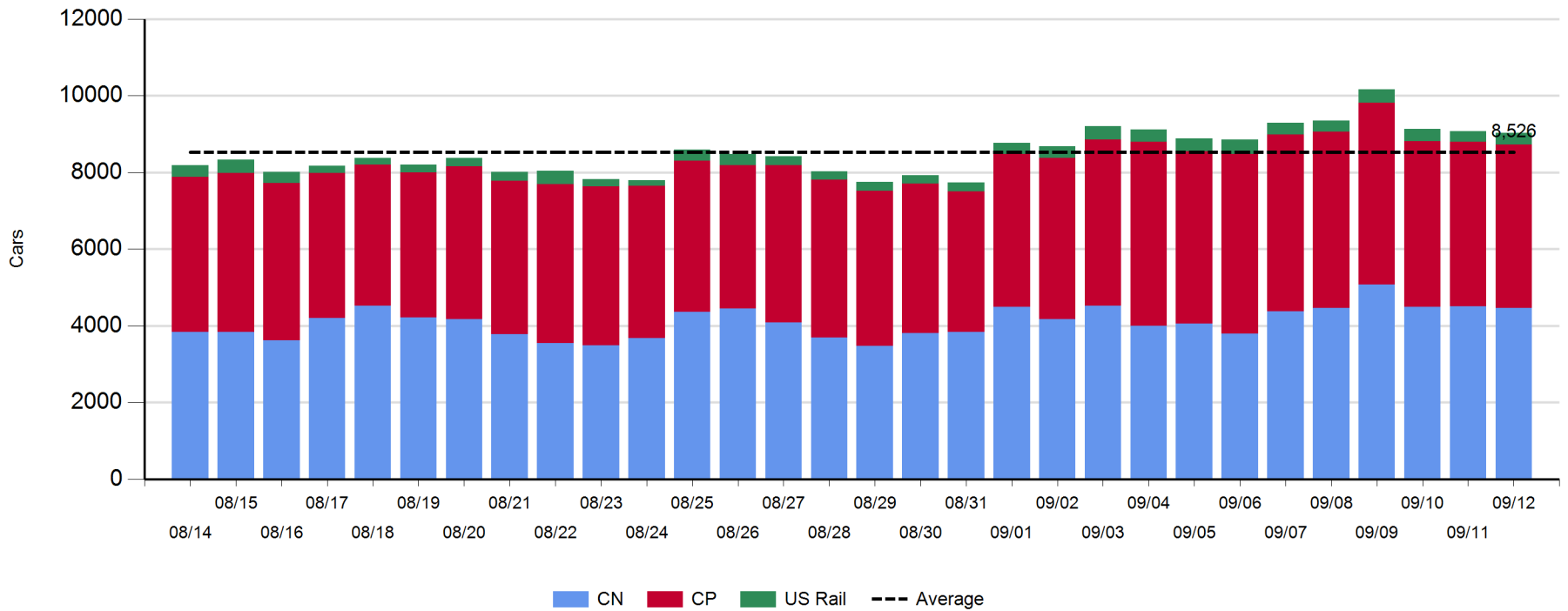
Daily Loads on Wheels - 9/12/2018

	E Canada	Prince Rupert	Thunder Bay	USA/MEX	Vancouver	Total
CN	433	1,169	484	293	2,089	4,468
CP	135		1,117	402	2,597	4,251
Short Line	7				18	25
US Rail				291		291
	575	1,169	1,601	986	4,704	9,035

Change in Loads on Wheels - Prior 24 Hours

	E Canada	Prince Rupert	Thunder Bay	USA/MEX	Vancouver	Total
CN	-33	116	-158	63	-21	-33
CP	-19		4	-46	22	-39
Short Line	-5				-5	-10
US Rail				51		51
	-57	116	-154	68	-4	-31

Loads on Wheels - Prior 30 Days

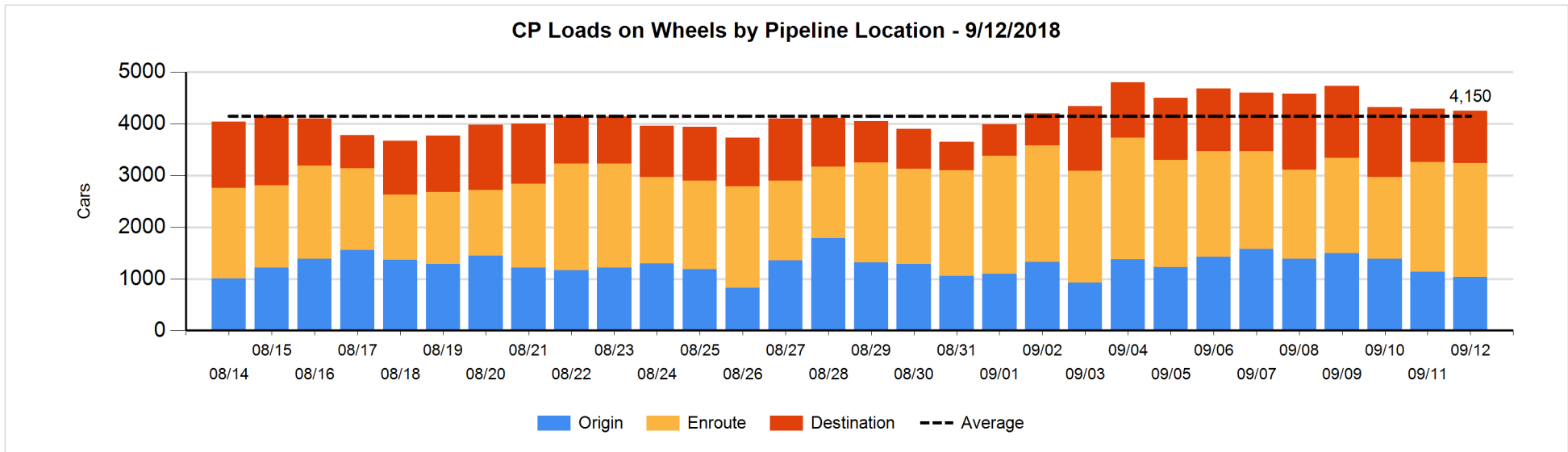
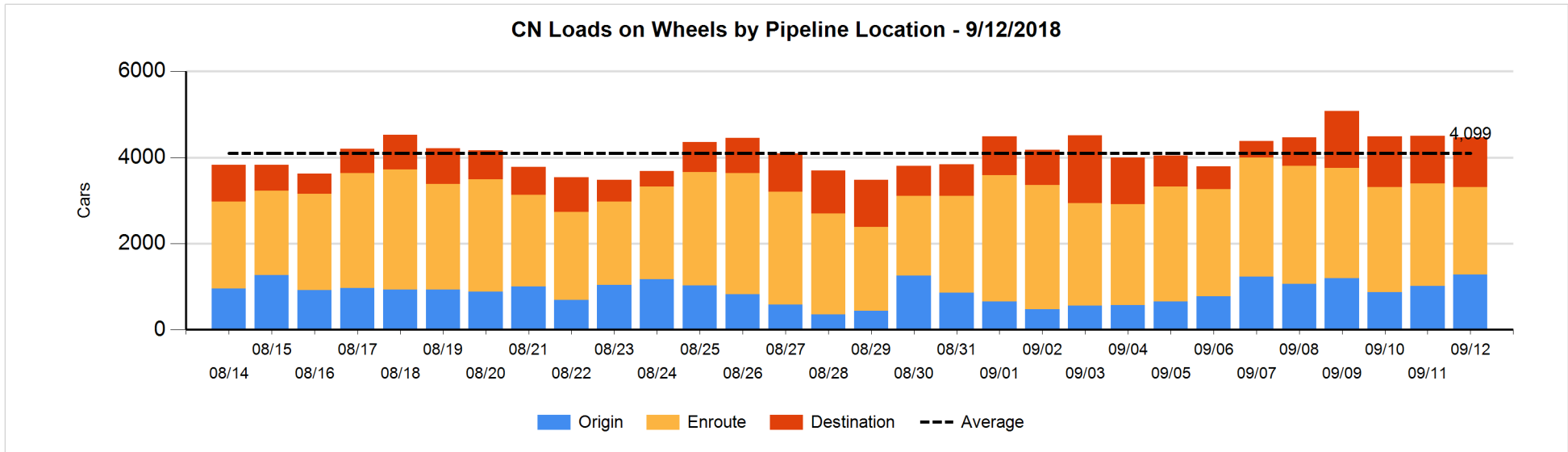


Daily Loads on Wheels By Pipeline Location - 9/12/2018

	E Canada	Prince Rupert	Thunder Bay	USA/MEX	Vancouver	Total
CN						
Origin	16	579		153	534	1,282
Enroute	307	523	33	110	1,059	2,032
Destination	110	67	451	30	496	1,154
	433	1,169	484	293	2,089	4,468
CP						
Origin	84		290	31	629	1,034
Enroute	50		257	316	1,582	2,205
Destination	1		570	55	386	1,012
	135		1,117	402	2,597	4,251
US Rail / Short Line						
Origin						
Enroute				209		209
Destination	7			82	18	107
	7			291	18	316

Change in Daily Loads on Wheels By Pipeline Location - Prior 24 Hours

	E Canada	Prince Rupert	Thunder Bay	USA/MEX	Vancouver	Total
CN						
Origin	-160	309		77	40	266
Enroute	55	-235	-236	-2	70	-348
Destination	72	42	78	-12	-131	49
	-33	116	-158	63	-21	-33
CP						
Origin	0		127	-16	-211	-100
Enroute	-20		-86	-21	211	84
Destination	1		-37	-9	22	-23
	-19		4	-46	22	-39
US Rail / Short Line						
Origin						
Enroute	-4			17		13
Destination	-1			34	-5	28
	-5			51	-5	41

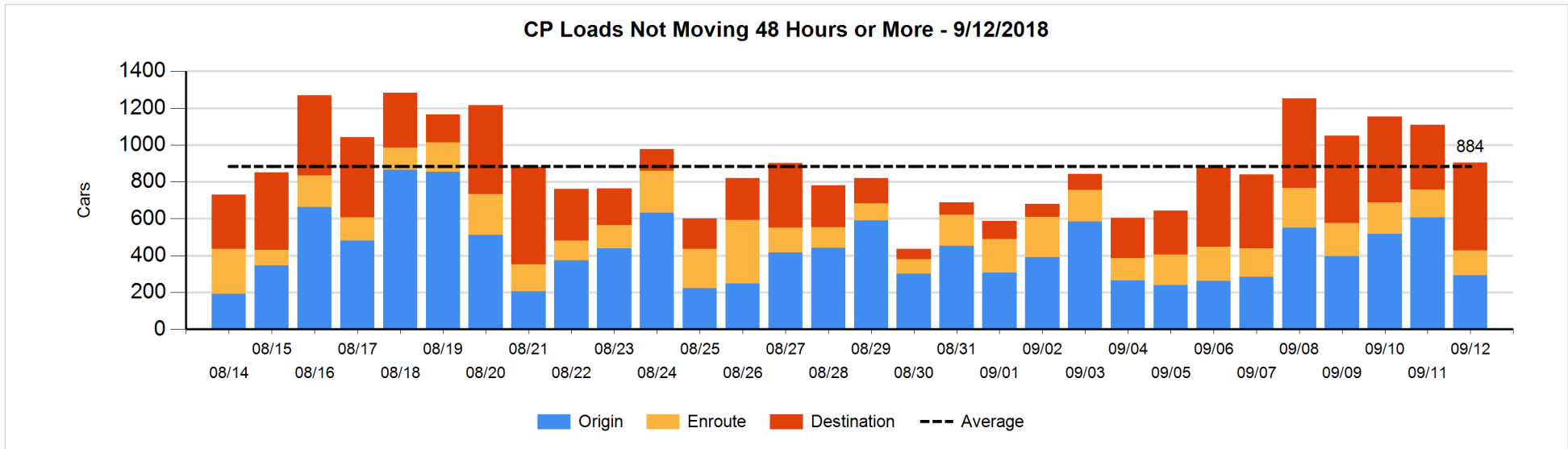
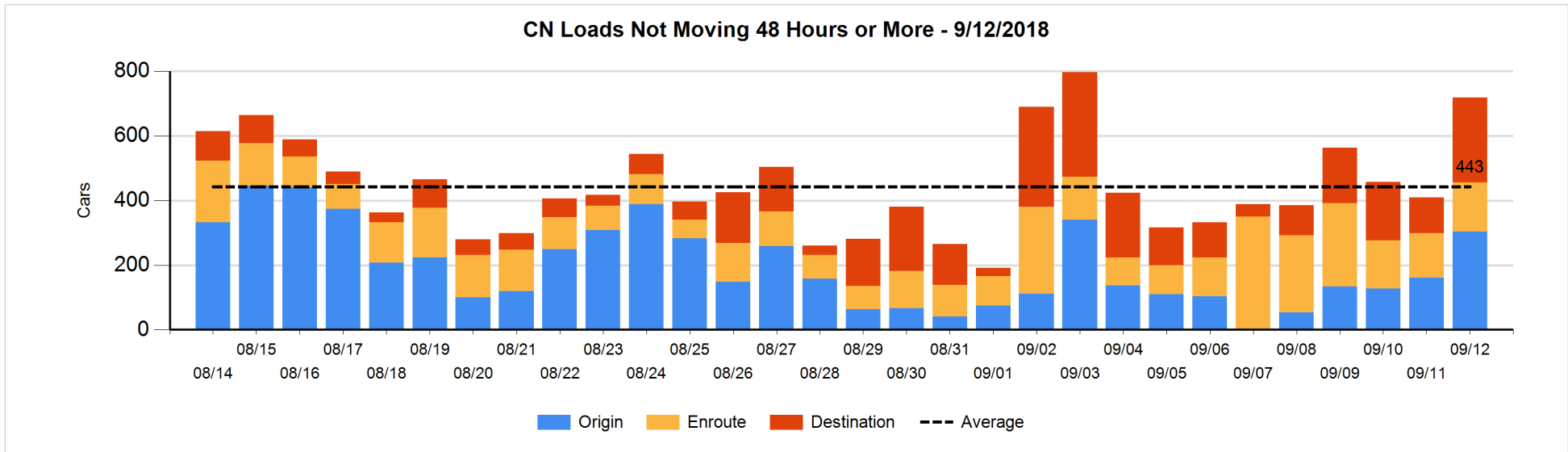


Loads Not Moving 48 Hours or More - 9/12/2018

	E Canada	Prince Rupert	Thunder Bay	USA/MEX	Vancouver	Total
CN						
Origin		54		51	198	303
Enroute	17	8	1	53	74	153
Destination	4	2	100	10	146	262
	21	64	101	114	418	718
CP						
Origin	81		24	29	159	293
Enroute	4		6	83	42	135
Destination			368	16	93	477
	85		398	128	294	905
US Rail / Short Line						
Origin						
Enroute				52		52
Destination				36	9	45
				88	9	97

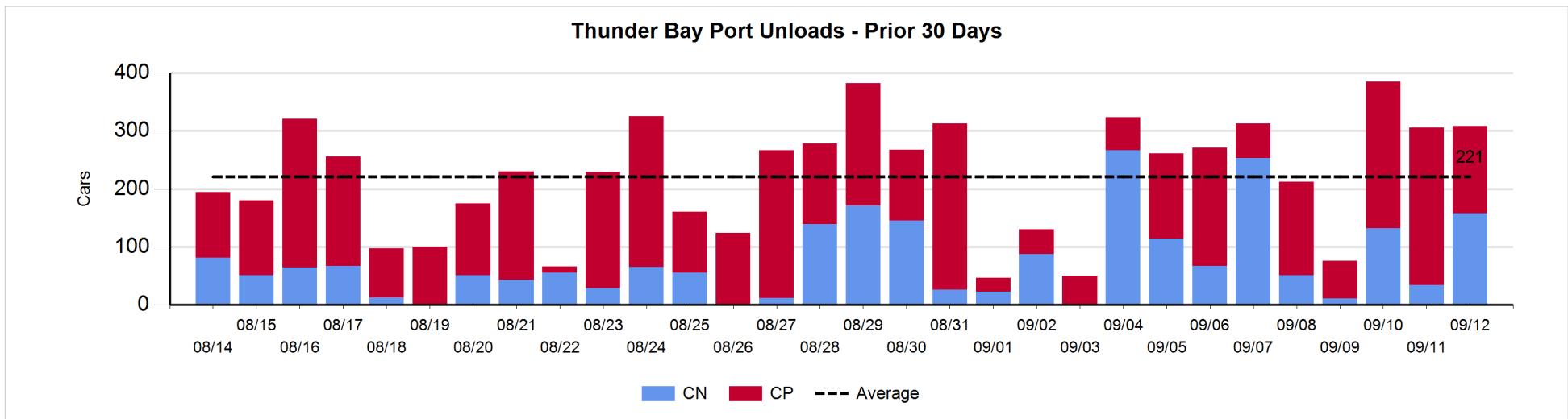
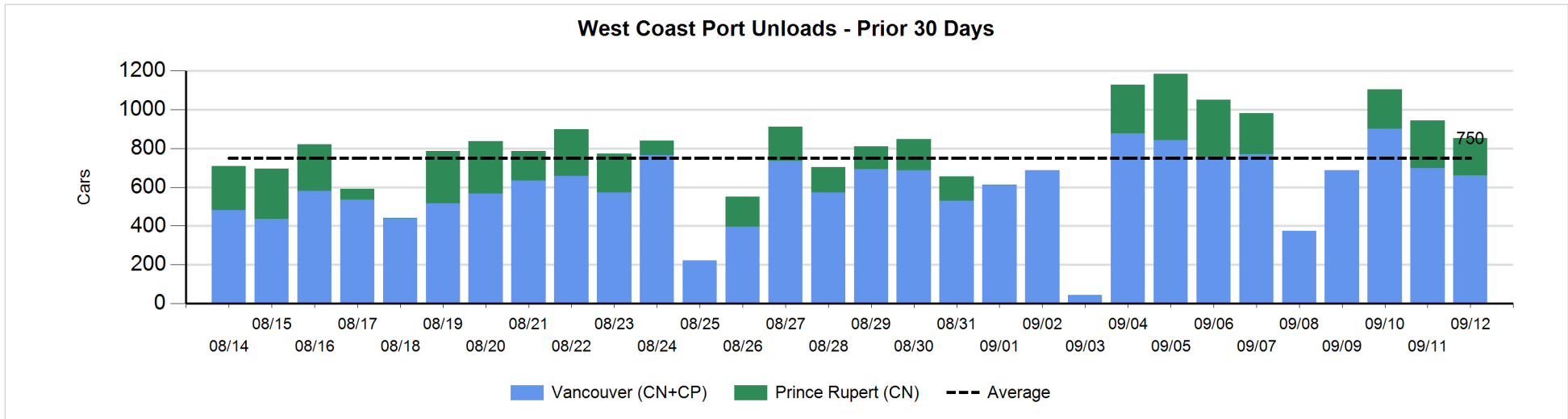
Change in Loads Not Moving 48 Hours or More - 9/12/2018

	E Canada	Prince Rupert	Thunder Bay	USA/MEX	Vancouver	Total
CN						
Origin		-12		50	104	142
Enroute	-1	2	1	-3	16	15
Destination	0	-4	90	-1	66	151
	-1	-14	91	46	186	308
CP						
Origin	0		-27	11	-299	-315
Enroute	2		-1	-1	-16	-16
Destination			107	0	21	128
	2		79	10	-294	-203
US Rail / Short Line						
Origin						
Enroute	-2			-12		-14
Destination				10	-4	6
	-2			-2	-4	-8



Port Unloads - 9/12/2018

	Prince Rupert	Vancouver	West Coast Total	Thunder Bay	Total
CN	193	280	473	158	631
CP		380	380	150	530
	193	660	853	308	1,161



Port Terminal Status

Vancouver

Daily Activity for 9/12/2018

	Cars Arrived	Cars Received in Interchange	Cars Delivered in Interchange	Cars Placed for Unloading	Loads on Wheels at Destination As of 9/12/2018
CN	193	111	106	374	496
CP	353	106	111	308	386
SRY				5	18

Port Unloads

	09/12	09/11	Week To Date	Last Week
CN	280	398	1,184	1,893
CP	380	300	1,074	2,452
SRY	6	13	28	48

Age Profile of Loaded Cars Waiting Placement for Unloading

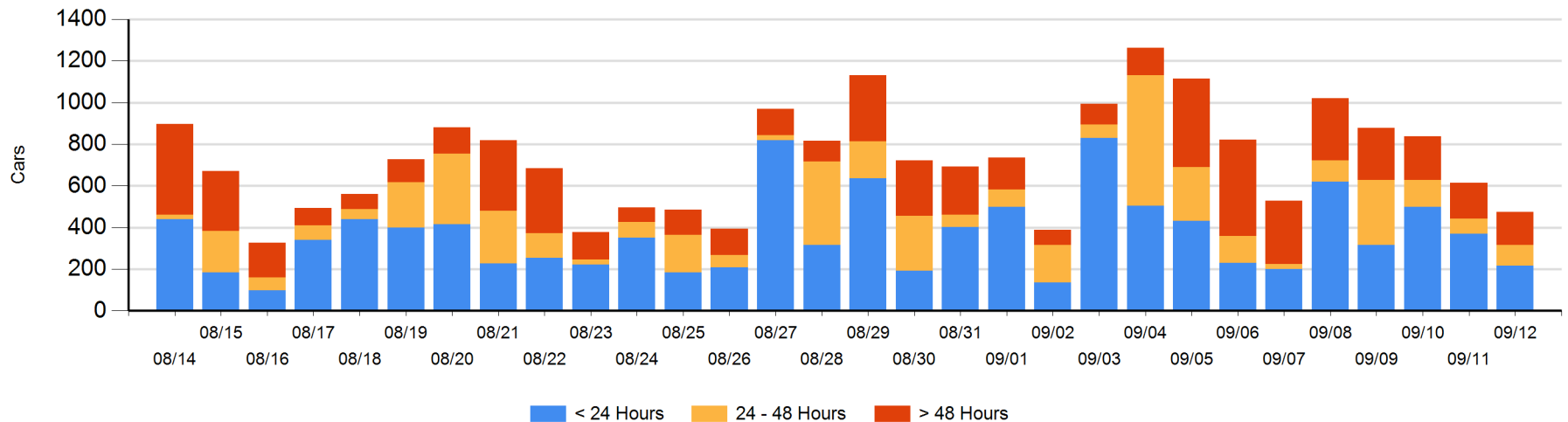
Today

	< 24 Hrs	24 - 48 Hrs	> 48-72 Hrs	> 72 Hrs	Total On Hand
CN	88	63	17	61	229
CP	129	36	29	51	245
SRY					0

Change in Last 24 Hours

	< 24 Hrs	24-48 Hrs	48 - 72 Hrs	> 72 Hrs
CN	-132	43	-24	-3
CP	-22	-16	12	2
SRY				

Loaded Cars on Hand Vancouver Waiting for Placement - Last 30 Days All Railways



Port Terminal Status

Prince Rupert

Daily Activity for 9/12/2018

	Cars Arrived	Cars Received in Interchange	Cars Delivered in Interchange	Cars Placed for Unloading	Loads on Wheels at Destination As of 9/12/2018
CN	235			235	67

Port Unloads

	09/12	09/11	Week To Date	Last Week
CN	193	245	643	1,103

Age Profile of Loaded Cars Waiting Placement for Unloading

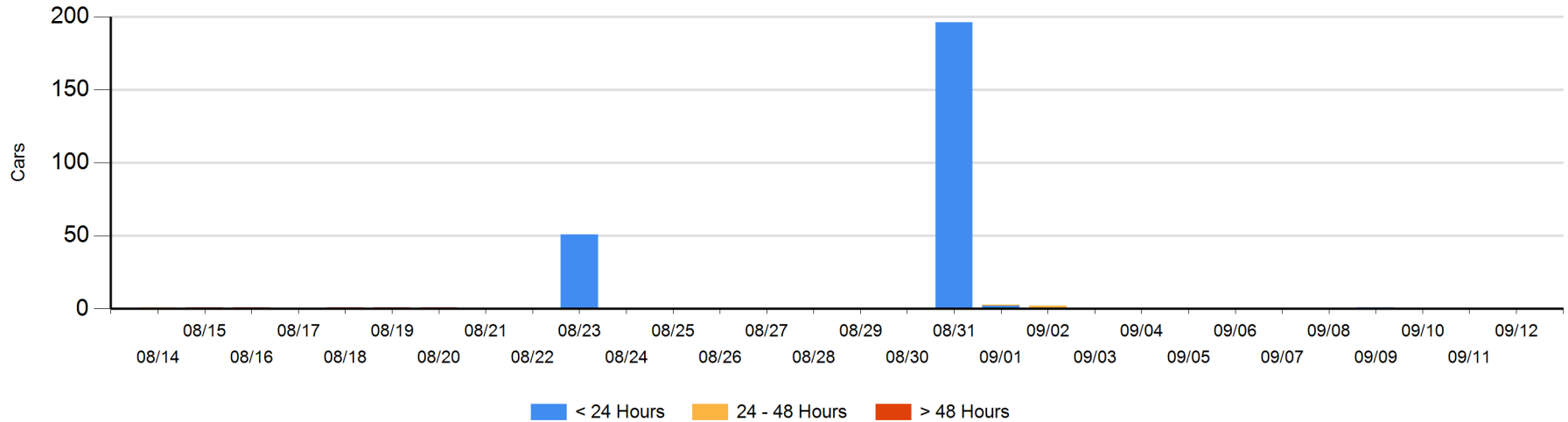
Today

	< 24 Hrs	24 - 48 Hrs	> 48-72 Hrs	> 72 Hrs	Total On Hand
CN					0

Change in Last 24 Hours

	< 24 Hrs	24-48 Hrs	48 - 72 Hrs	> 72 Hrs
CN				

Loaded Cars on Hand Prince Rupert Waiting for Placement - Last 30 Days All Railways



Port Terminal Status

Thunder Bay

Daily Activity for 9/12/2018

	Cars Arrived	Cars Received in Interchange	Cars Delivered in Interchange	Cars Placed for Unloading	Loads on Wheels at Destination As of 9/12/2018
CN	236			111	451
CP	113			61	570

Port Unloads

	09/12	09/11	Week To Date	Last Week
CN	158	34	324	762
CP	150	272	675	744

Age Profile of Loaded Cars Waiting Placement for Unloading

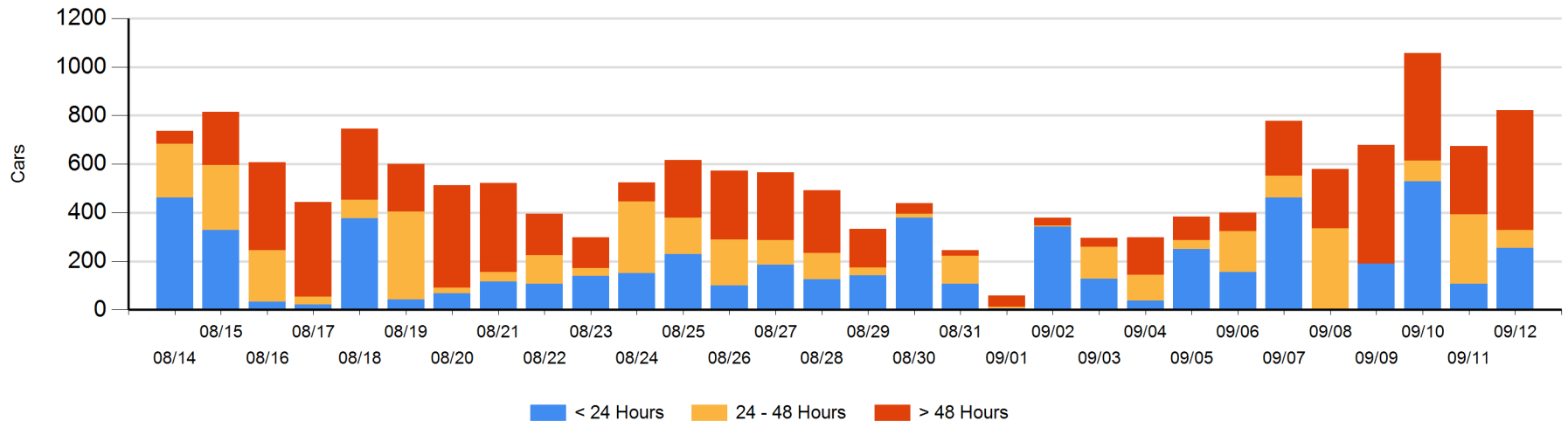
Today

	< 24 Hrs	24 - 48 Hrs	> 48-72 Hrs	> 72 Hrs	Total On Hand
CN	141		106		247
CP	113	74	106	281	574

Change in Last 24 Hours

	< 24 Hrs	24-48 Hrs	48 - 72 Hrs	> 72 Hrs
CN	125	-106	106	
CP	21	-106	81	25

Loaded Cars on Hand Thunder Bay Waiting for Placement - Last 30 Days All Railways



Measurement Definitions

Loads on Wheels	<p>Count of loaded rail cars including all rail cars that have been released loaded at origin and have not been reported by the railway as unloaded at destination.</p> <p>Counts include all rail cars (hopper cars and boxcars) moving within a pipeline.</p>
Loads Not Moving	<p>Loaded rail cars for which the railways have not reported a movement event for 48 hours or more whether the rail car is at origin, enroute or at destination.</p>
Port Unloads	<p>Count of rail cars reported by railways as unloaded at the western port destinations of Vancouver, Prince Rupert and Thunder Bay.</p> <p>Unload counts include all rail cars (hopper cars and boxcars) unloaded by all receivers including major port terminals, transloaders and other receivers.</p>
Cars Arrived	<p>Count of rail cars reported as arrived at the destination railway terminal.</p>
Cars Received in Interchange	<p>Count of rail cars received in interchange by each railway within a destination railway terminal. Interchange activity is tracked for the Vancouver and Thunder Bay pipelines as applicable.</p>
Cars Delivered in Interchange	<p>Count of rail cars delivered in interchange by each railway within a destination railway terminal. Interchange activity is tracked for the Vancouver and Thunder Bay pipelines as applicable.</p>
Cars Placed for Unloading	<p>Count of rail cars reported by the railways as placed loaded at the receiver's facility for unloading.</p>
Loads on Wheels at Destination	<p>Count of rail cars that remain under load within the destination railway terminal including rail cars that have been reported as placed for unloading but not yet reported as unloaded.</p>
Waiting Placement for Unloading	<p>Count of rail cars that have been reported as arrived at the destination railway terminal but not reported as placed for unloading by the railway.</p> <p>For the Ports of Vancouver, Prince Rupert and Thunder Bay the count of rail cars waiting placement for unloading is categorized by age – i.e. the elapsed time from arrival at destination to the current report date.</p>