

## SPEED READ

- Loads on wheels increased slightly overnight, reflecting a rise in both CN and CP volumes. On a net basis, volumes increased due to higher traffic in the Vancouver and Prince Rupert corridors offset by lower traffic in the Thunder Bay, USA/MEX and E. Canada corridors.
- Network fluidity improved overnight, led by a decline in idle car counts on both CN and CP by 22% (-179) and 10% (-88), respectively. The total count of cars for 4+ days on both railways declined 17% (-139) overnight - currently at 685 cars.
- One day in Week 8 unloads now behind prior week's performance by nearly 350 unloads, reflecting lower unloads across all three major ports - Vancouver, Thunder Bay and Prince Rupert.

---

## Loads on Wheels

- Loads on wheels increased marginally by 1% (+132) overnight, due to higher traffic levels on both CN and CP - combined total at 9,424 and 8% above the trailing 30-day average.
- On a net basis, the rise in loads on wheels reflects higher traffic in the Vancouver and Prince Rupert corridors offset by lower volumes in the Thunder Bay, USA/MEX and E. Canada corridors.
- CN volumes increased slightly (+3) overnight, with higher volumes in the Prince Rupert and Vancouver corridors offset by reduced volumes in the Thunder Bay, E. Canada and USA/MEX corridors. System wide CN loads on wheels presently at 4,823 and 15% above the trailing 30-day average.
- CP volumes rose 5% (+192) overnight, driven by an increase in traffic in the Vancouver corridor offset by a decline in traffic in the Thunder Bay, USA/MEX and E. Canada corridors. CP system wide loads on wheels currently at 4,380 and 4% above the trailing 30-day average.
- Vancouver presently at 4,904, gained 10% (+432) overnight, now 7% above the trailing 30-day average.
- The Prince Rupert pipeline currently at 1,487, the highest seen in the last 30 days, increased 7% (+93) overnight and 40% above the trailing 30-day average.
- Thunder Bay volumes decreased significantly by 13% (-249) overnight - currently at 1,680 and 6% above the trailing 30-day average, with 76% of traffic moving on CP.

## Hopper Car Rationing

- CN has rationed 100 hopper car orders for week 7 and none is expected in week 8.

## Loads Not Moving

- **The count of cars not moving for 48+ hours decreased 16% (-267) overnight, reflecting lower counts on both CN and CP. Idle car counts presently at 1,450 and 9% above the trailing 30-day average.**
- CN
  - **The count of idle cars for 48+ hours fell 22% (-179) overnight - currently at 632 cars.**
  - The number of cars idle for 4+ days decreased 15% (-60) overnight - currently at 341 cars.
  - The count of cars not moving for 7+ days declined 4% (-3) overnight - currently at 78 cars.
  - Vancouver represents 66% of all idle cars.
  - In total 19% of all idle cars are dwelling at origin locations.
- CP
  - **CP idle car counts for 48+ hours decreased 10% (-88) overnight - currently at 818 cars.**
  - The number of cars idle for 4+ days declined 19% (-79) overnight and have now decreased for the third consecutive day - now at 344 cars.

- The number of cars idle for 7+ days fell 27% (-61) overnight - currently at 169 cars.
- Vancouver accounts for 51% of all idle cars.
- In total 47% of all idle cars are dwelling at origin locations.

### **Port Performance**

- CN and CP reported a total of 1,163 cars unloaded at the three major ports, now 16% above the trailing 30-day average. One day in Week 8 unloads are tracking behind last week's pace by around 350 unloads, reflecting reduced unloads across all three major ports - Vancouver, Thunder Bay and Prince Rupert.
- Vancouver
  - 646 unloads reported by CN and CP at the Port of Vancouver; CN - 244 and CP - 402. One day in Week 8 unloads are tracking behind last week's performance by more than 250 unloads.
  - There are about 1,150 cars on site at Vancouver with 750 cars arriving at the port in the last 24 hours.
  - CN and CP have more than 1,100 cars in British Columbia en route to Vancouver, with fewer than 850 Kamloops and west and 54% of traffic currently moving on CP.
- Prince Rupert
  - Prince Rupert reported 157 unloads, now behind last week's unloads after one day by 50 unloads.
  - Loads on wheels now above 1,000 cars - currently at 1,487 cars.
  - There are more than 550 cars west of Jasper en route to Prince Rupert.
  - There are 100 cars on site at Prince Rupert with more than 100 cars arriving at the port in the last 24 hours. Given the structure of the pipeline, there appears to be sufficient cars available to support unloads in the next few days.
- Thunder Bay
  - 360 unloads were reported at Thunder Bay yesterday. One day in Week 8 unloads are tracking behind last week's pace by 25 unloads.
  - There are more than 750 cars on site at Thunder Bay with 400 cars arriving at the port in the prior 24 hours.
  - There are around 500 cars en route to Thunder Bay from Winnipeg and east. Cars on hand and those en route should support unloads in the next few days.

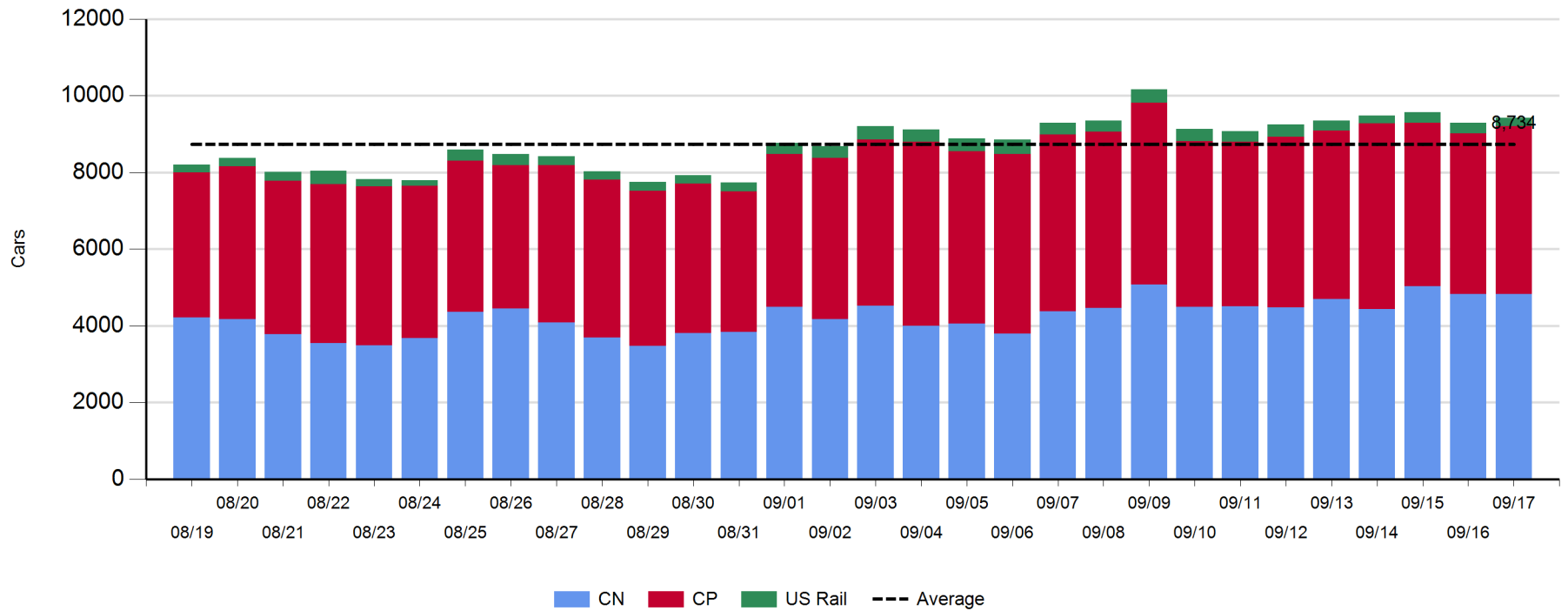
**Daily Loads on Wheels - 9/17/2018**

	E Canada	Prince Rupert	Thunder Bay	USA/MEX	Vancouver	Total
CN	426	1,487	401	392	2,117	4,823
CP	98		1,279	242	2,761	4,380
Short Line	2				26	28
US Rail				193		193
	526	1,487	1,680	827	4,904	9,424

**Change in Loads on Wheels - Prior 24 Hours**

	E Canada	Prince Rupert	Thunder Bay	USA/MEX	Vancouver	Total
CN	-28	93	-100	-1	39	3
CP	-1		-149	-46	388	192
Short Line	-2				6	4
US Rail				-66	-1	-67
	-31	93	-249	-113	432	132

**Loads on Wheels - Prior 30 Days**

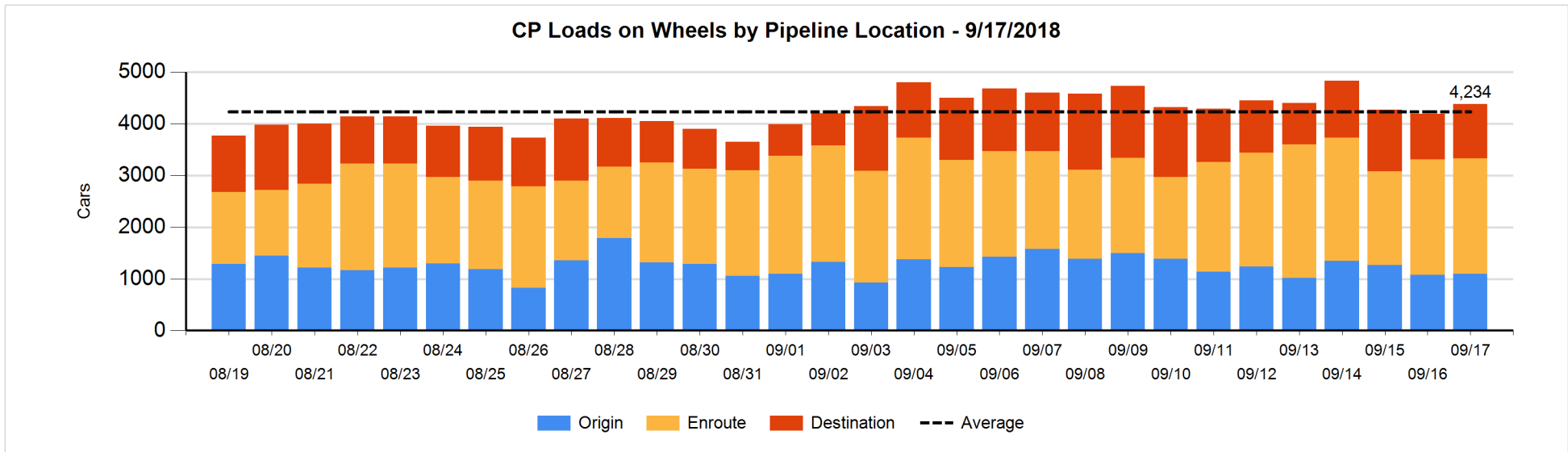
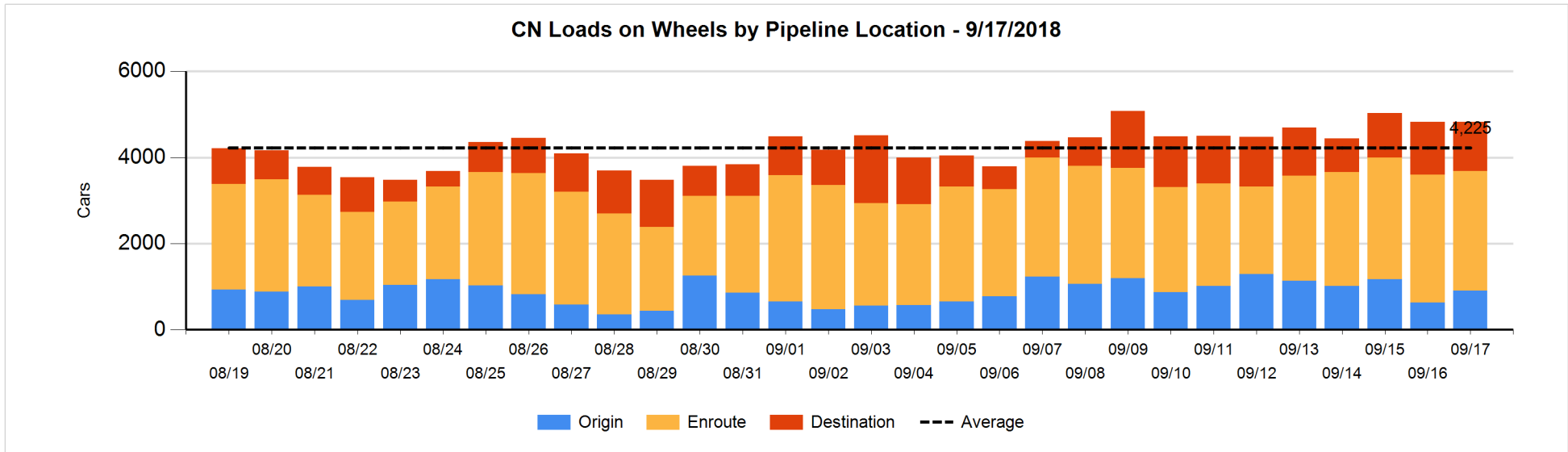


**Daily Loads on Wheels By Pipeline Location - 9/17/2018**

	E Canada	Prince Rupert	Thunder Bay	USA/MEX	Vancouver	Total
CN						
Origin	7	391		11	495	904
Enroute	282	989	103	348	1,063	2,785
Destination	137	107	298	33	559	1,134
	426	1,487	401	392	2,117	4,823
CP						
Origin	4		147	33	913	1,097
Enroute	93		657	186	1,299	2,235
Destination	1		475	23	549	1,048
	98		1,279	242	2,761	4,380
US Rail / Short Line						
Origin						
Enroute	2			113		115
Destination				80	26	106
	2			193	26	221

**Change in Daily Loads on Wheels By Pipeline Location - Prior 24 Hours**

	E Canada	Prince Rupert	Thunder Bay	USA/MEX	Vancouver	Total
CN						
Origin	-46	144	-102	7	272	275
Enroute	70	-18	-1	-31	-203	-183
Destination	-52	-33	3	23	-30	-89
	-28	93	-100	-1	39	3
CP						
Origin	0		-53	-24	103	26
Enroute	-1		-129	-21	151	0
Destination	0		33	-1	134	166
	-1		-149	-46	388	192
US Rail / Short Line						
Origin						
Enroute	2			14		16
Destination	-4			-80	5	-79
	-2			-66	5	-63

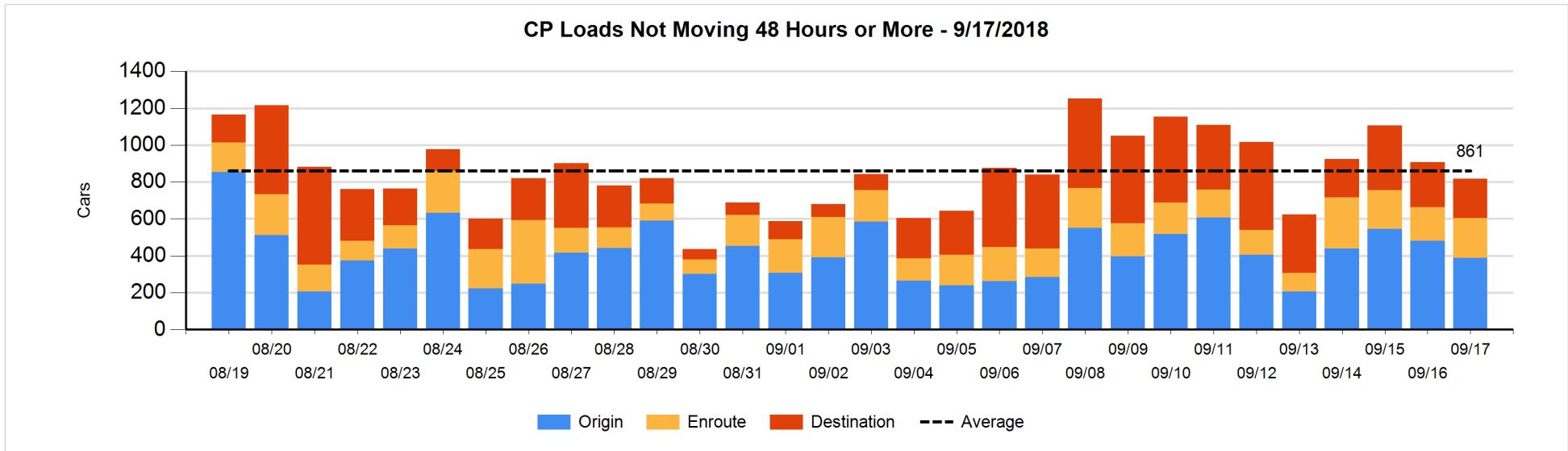
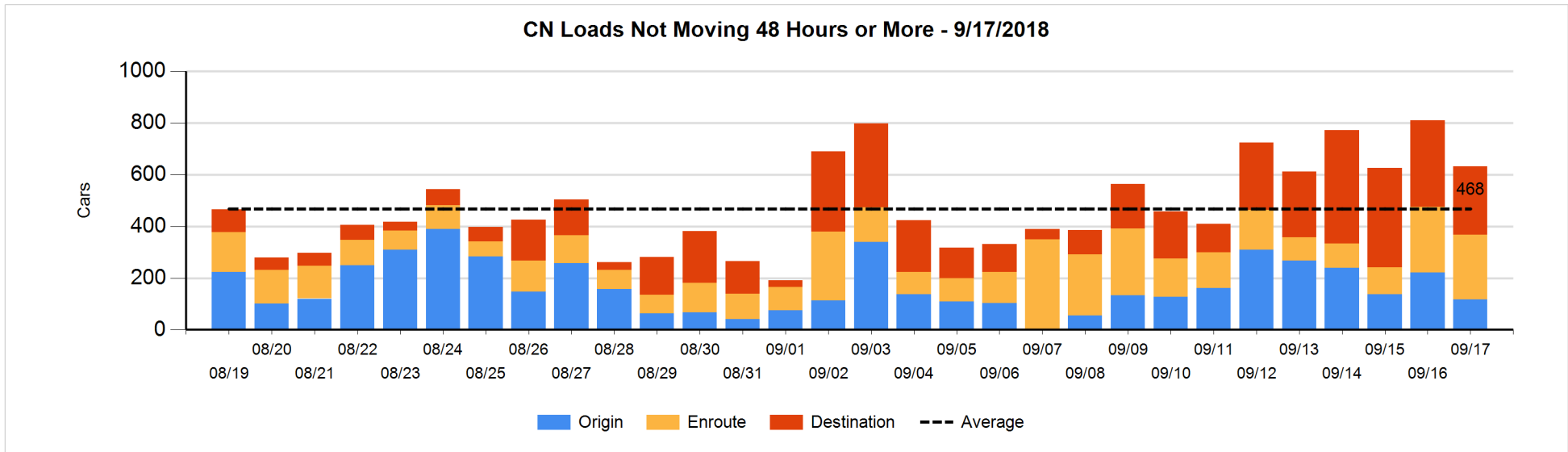


**Loads Not Moving 48 Hours or More - 9/17/2018**

	E Canada	Prince Rupert	Thunder Bay	USA/MEX	Vancouver	Total
<b>CN</b>						
Origin		50		3	64	117
Enroute	28	5	1	87	129	250
Destination	5	1	29	4	226	265
	33	56	30	94	419	632
<b>CP</b>						
Origin	4		36	30	317	387
Enroute	3		62	111	40	216
Destination	1		132	23	59	215
	8		230	164	416	818
<b>US Rail / Short Line</b>						
Origin						
Enroute				62		62
Destination				47	6	53
				109	6	115

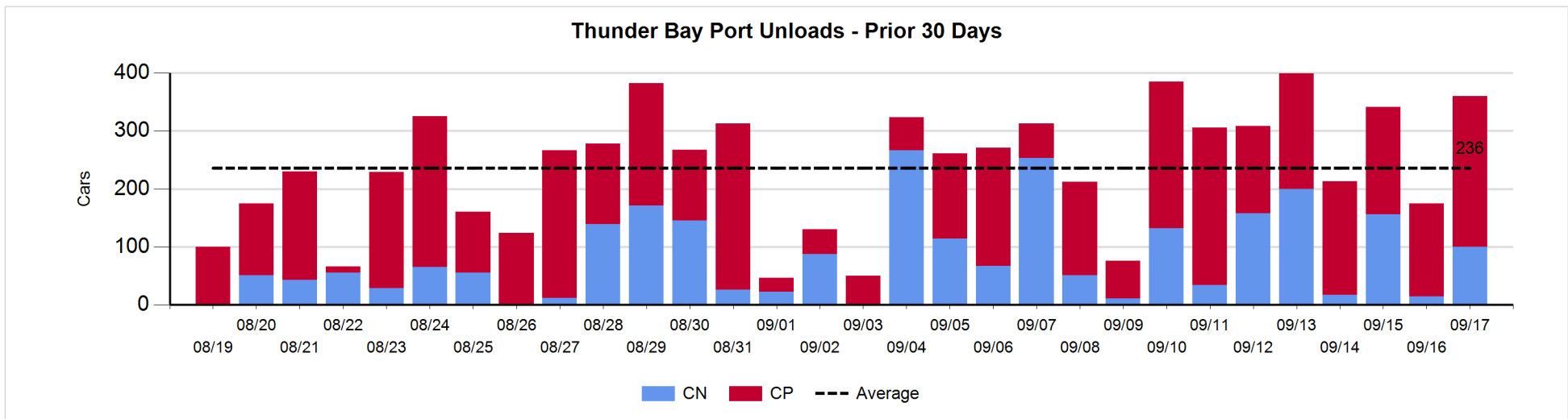
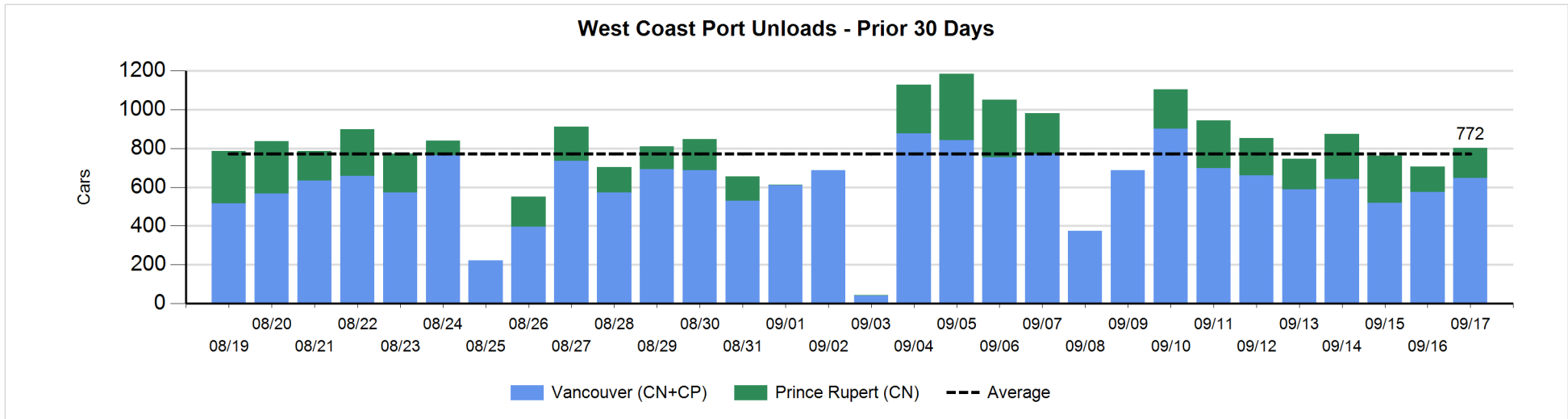
**Change in Loads Not Moving 48 Hours or More - 9/17/2018**

	E Canada	Prince Rupert	Thunder Bay	USA/MEX	Vancouver	Total
<b>CN</b>						
Origin		-55		-1	-49	-105
Enroute	-3	-12	0	1	11	-3
Destination	-13	0	-53	-4	-1	-71
	-16	-67	-53	-4	-39	-179
<b>CP</b>						
Origin	0		-52	26	-67	-93
Enroute	-3		40	0	-3	34
Destination	0		-61	4	28	-29
	-3		-73	30	-42	-88
<b>US Rail / Short Line</b>						
Origin						
Enroute				36		36
Destination	-4			-11	-3	-18
	-4			25	-3	18



**Port Unloads - 9/17/2018**

	Prince Rupert	Vancouver	West Coast Total	Thunder Bay	Total
CN	157	244	401	100	501
CP		402	402	260	662
	157	646	803	360	1,163





**Port Terminal Status**

**Vancouver**

Daily Activity for 9/17/2018

	Cars Arrived	Cars Received in Interchange	Cars Delivered in Interchange	Cars Placed for Unloading	Loads on Wheels at Destination As of 9/17/2018
CN	271	262	316	187	559
CP	486	308	262	445	549
SRY		8		9	26

**Port Unloads**

	09/17	09/16	Week To Date	Last Week
CN	244	163	244	2,011
CP	402	412	402	2,570
SRY	2		2	41

**Age Profile of Loaded Cars Waiting Placement for Unloading**

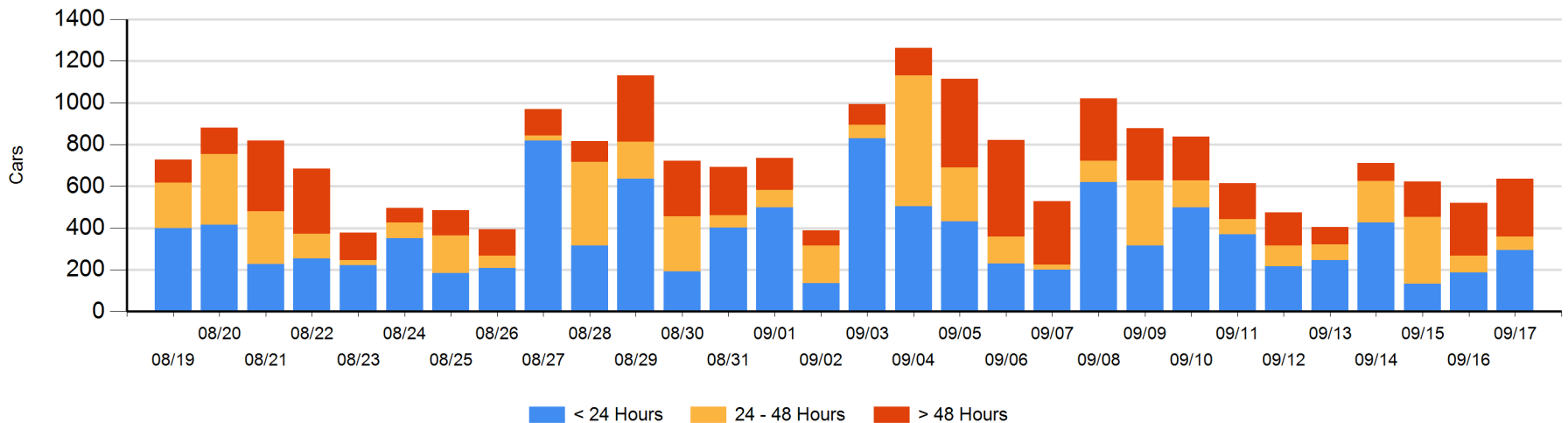
**Today**

	< 24 Hrs	24 - 48 Hrs	> 48-72 Hrs	> 72 Hrs	Total On Hand
CN	71	46	1	65	183
CP	224	17	34	179	454
SRY					0

**Change in Last 24 Hours**

	< 24 Hrs	24-48 Hrs	48 - 72 Hrs	> 72 Hrs
CN	-49	45	-40	41
CP	157	-63	-123	148
SRY				

**Loaded Cars on Hand Vancouver Waiting for Placement - Last 30 Days All Railways**



**Port Terminal Status**

**Prince Rupert**

Daily Activity for 9/17/2018

	Cars Arrived	Cars Received in Interchange	Cars Delivered in Interchange	Cars Placed for Unloading	Loads on Wheels at Destination As of 9/17/2018
CN	123			23	107

**Port Unloads**

	09/17	09/16	Week To Date	Last Week
CN	157	132	157	1,410

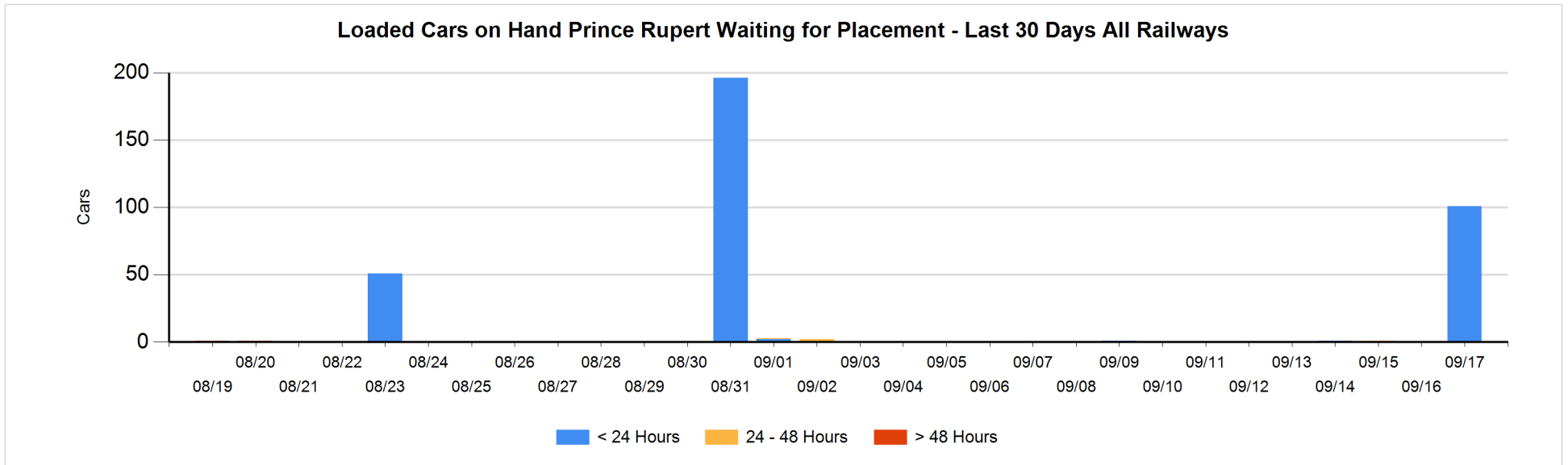
**Age Profile of Loaded Cars Waiting Placement for Unloading**

**Today**

	< 24 Hrs	24 - 48 Hrs	> 48-72 Hrs	> 72 Hrs	Total On Hand
CN	101				101

**Change in Last 24 Hours**

	< 24 Hrs	24-48 Hrs	48 - 72 Hrs	> 72 Hrs
CN	101			



**Port Terminal Status**

**Thunder Bay**

Daily Activity for 9/17/2018

	Cars Arrived	Cars Received in Interchange	Cars Delivered in Interchange	Cars Placed for Unloading	Loads on Wheels at Destination As of 9/17/2018
CN	103			112	298
CP	291			119	475

**Port Unloads**

	09/17	09/16	Week To Date	Last Week
CN	100	14	100	711
CP	260	161	260	1,416

**Age Profile of Loaded Cars Waiting Placement for Unloading**

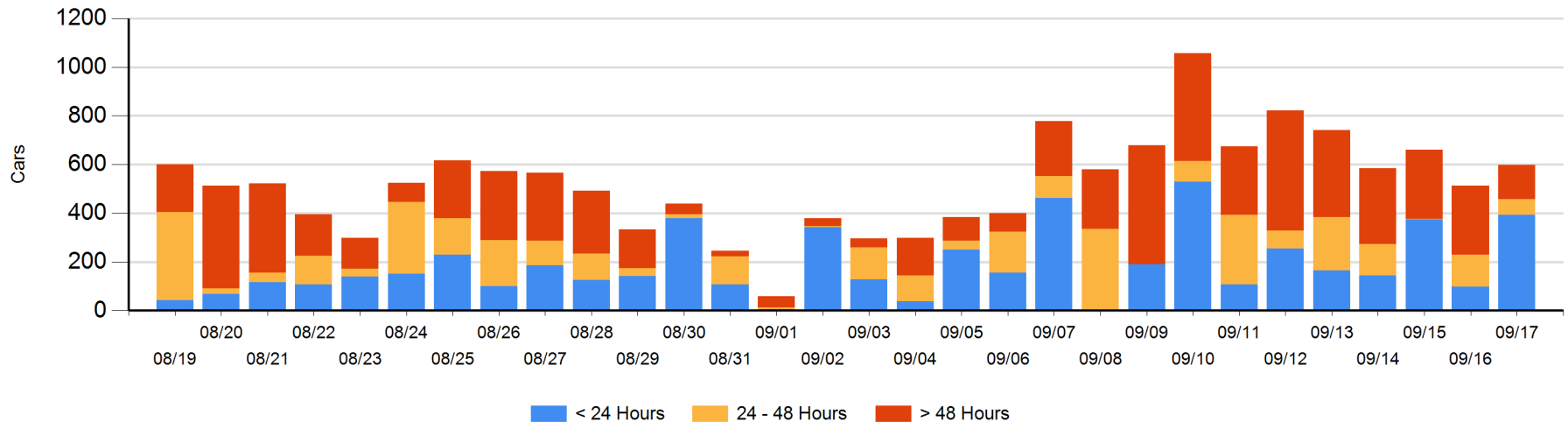
**Today**

	< 24 Hrs	24 - 48 Hrs	> 48-72 Hrs	> 72 Hrs	Total On Hand
CN	103	64		25	192
CP	291		80	36	407

**Change in Last 24 Hours**

	< 24 Hrs	24-48 Hrs	48 - 72 Hrs	> 72 Hrs
CN	4	54	-1	-66
CP	291	-120	80	-156

**Loaded Cars on Hand Thunder Bay Waiting for Placement - Last 30 Days All Railways**



## Measurement Definitions

Loads on Wheels	<p>Count of loaded rail cars including all rail cars that have been released loaded at origin and have not been reported by the railway as unloaded at destination.</p> <p>Counts include all rail cars (hopper cars and boxcars) moving within a pipeline.</p>
Loads Not Moving	<p>Loaded rail cars for which the railways have not reported a movement event for 48 hours or more whether the rail car is at origin, enroute or at destination.</p>
Port Unloads	<p>Count of rail cars reported by railways as unloaded at the western port destinations of Vancouver, Prince Rupert and Thunder Bay.</p> <p>Unload counts include all rail cars (hopper cars and boxcars) unloaded by all receivers including major port terminals, transloaders and other receivers.</p>
Cars Arrived	<p>Count of rail cars reported as arrived at the destination railway terminal.</p>
Cars Received in Interchange	<p>Count of rail cars received in interchange by each railway within a destination railway terminal. Interchange activity is tracked for the Vancouver and Thunder Bay pipelines as applicable.</p>
Cars Delivered in Interchange	<p>Count of rail cars delivered in interchange by each railway within a destination railway terminal. Interchange activity is tracked for the Vancouver and Thunder Bay pipelines as applicable.</p>
Cars Placed for Unloading	<p>Count of rail cars reported by the railways as placed loaded at the receiver's facility for unloading.</p>
Loads on Wheels at Destination	<p>Count of rail cars that remain under load within the destination railway terminal including rail cars that have been reported as placed for unloading but not yet reported as unloaded.</p>
Waiting Placement for Unloading	<p>Count of rail cars that have been reported as arrived at the destination railway terminal but not reported as placed for unloading by the railway.</p> <p>For the Ports of Vancouver, Prince Rupert and Thunder Bay the count of rail cars waiting placement for unloading is categorized by age – i.e. the elapsed time from arrival at destination to the current report date.</p>