

**SPEED READ**

- Loads on wheels increased overnight, reflecting a nominal decline in CN volumes offset by higher CP volumes. On a net basis, volumes rose due to higher traffic levels across all corridors other than USA/MEX.
- Network fluidity deteriorated overnight, led by a decline in idle car counts on CN of 10% (-72) offset by an increase in idle car counts on CP of 61% (+577). The total count of cars for 4+ days on both railways decreased 12% (-69) overnight - currently at 500 cars.
- Week 8 unloads at just above 8,200 came in slightly higher than the prior week (+45), reflecting slightly improved week over week performance at Vancouver and Thunder Bay offset by nominally lower unloads at Prince Rupert.

=====

**Loads on Wheels**

- Loads on wheels increased 4% (+403) overnight, due to slightly reduced traffic levels on CN offset by higher traffic levels on CP - combined total at 10,168, the highest seen in the last 30 days, and 13% above the trailing 30-day average.
- On a net basis, the increase in loads on wheels reflects higher traffic levels across all corridors other than USA/MEX.
- CN volumes were largely unchanged 0% (-5) overnight, with reduced traffic levels in the USA/MEX and E. Canada corridors offset by higher volumes in the Prince Rupert, Thunder Bay and Vancouver corridors. System wide CN loads on wheels now at 4,939 and 12% above the trailing 30-day average.
- CP volumes increased 7% (+314) overnight, driven by an increase in traffic across all corridors other than USA/MEX. CP system wide loads on wheels now at 4,813 and 10% above the trailing 30-day average.
- Vancouver presently at 5,607, the highest seen in the last 30 days, gained 5% (+293) overnight and have now increased for the fourth consecutive day, now 17% above the trailing 30-day average.
- The Prince Rupert pipeline now at 1,414, increased 4% (+55) overnight and 22% above the trailing 30-day average.
- Thunder Bay volumes gained 4% (+49) overnight - currently at 1,437 and 9% below the trailing 30-day average, with 73% of traffic moving on CP.

**Hopper Car Rationing**

- CN rationed 125 hopper car orders for week 7 although no confirmed rationing has been identified yet for weeks 8 or 9.

**Loads Not Moving**

- **The count of cars not moving for 48+ hours gained 31% (+505) overnight, reflecting lower counts on CN offset by higher counts on CP. Idle car counts now at 2,135, the highest seen in the last 30 days, and 57% above the trailing 30-day average.**
- CN
  - **The count of idle cars for 48+ hours decreased 10% (-72) overnight and have now decreased for the third consecutive day - now at 617 cars.**
  - The number of cars idle for 4+ days fell 40% (-121) overnight - now at 183 cars.
  - The count of cars not moving for 7+ days fell 19% (-21) overnight - currently at 88 cars.
  - Vancouver represents 42% of all idle cars.
  - In total 27% of all idle cars are dwelling at origin locations.
- CP
  - **CP idle car counts for 48+ hours increased significantly by 61% (+577) overnight - now at 1,518 cars, the highest seen in the last 30 days.**
  - The number of cars idle for 4+ days rose 20% (+52) overnight - now at 317 cars.
  - The number of cars idle for 7+ days gained 13% (+12) overnight - now at 107 cars.

- Vancouver accounts for 54% of all idle cars.
- In total 54% of all idle cars are dwelling at origin locations.

### **Port Performance**

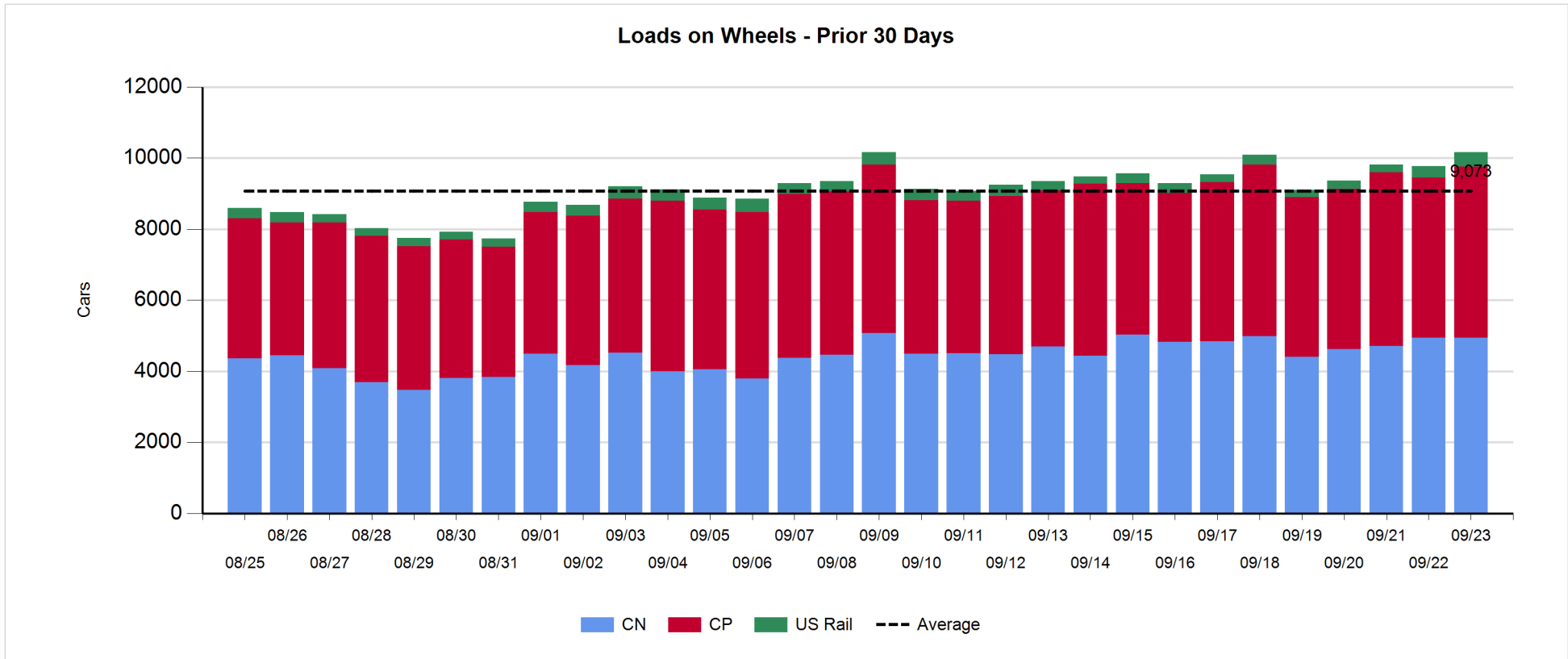
- CN and CP reported a total of 1,017 cars unloaded at the three major ports. Week 8 unloads at slightly more than 8,200 were marginally higher than the prior week, reflecting slightly higher unloads at Vancouver and Thunder Bay offset by slightly lower unloads at Prince Rupert.
- Vancouver
  - 758 unloads reported by CN and CP at the Port of Vancouver; CN - 379 and CP - 379. Week 8 unloads marginally higher than the prior week (+68).
  - There are 1,050 cars on site at Vancouver with 600 cars arriving at the port in the last 24 hours.
  - CN and CP have more than 1,150 cars in British Columbia en route to Vancouver, with 300 Kamloops and west and 56% of traffic currently moving on CP.
- Prince Rupert
  - Prince Rupert reported 149 unloads, finishing the week marginally lower than the prior week (-34).
  - Loads on wheels now above 1,000 cars - currently at 1,414 cars.
  - There are 600 cars west of Jasper en route to Prince Rupert.
  - There are 50 cars on site at Prince Rupert with 200 cars arriving at the port in the last 24 hours. Depending on the timeliness of movement for cars west of Prince George unloads may be negatively impacted in the short term.
- Thunder Bay
  - 110 unloads were reported at Thunder Bay yesterday. Week 8 unloads were marginally higher than the prior week (+11).
  - There are more than 400 cars on site at Thunder Bay with 26 cars arriving at the port in the prior 24 hours.
  - There are more than 450 cars en route to Thunder Bay from Winnipeg and east. Cars on hand and those en route should support unloads in the early part of the week.

**Daily Loads on Wheels - 9/23/2018**

	E Canada	Prince Rupert	Thunder Bay	USA/MEX	Vancouver	Total
CN	397	1,414	389	308	2,431	4,939
CP	135		1,048	476	3,154	4,813
Short Line	14				22	36
US Rail				380		380
	546	1,414	1,437	1,164	5,607	10,168

**Change in Loads on Wheels - Prior 24 Hours**

	E Canada	Prince Rupert	Thunder Bay	USA/MEX	Vancouver	Total
CN	-4	55	48	-120	16	-5
CP	48		1	-6	271	314
Short Line	0				6	6
US Rail				88		88
	44	55	49	-38	293	403

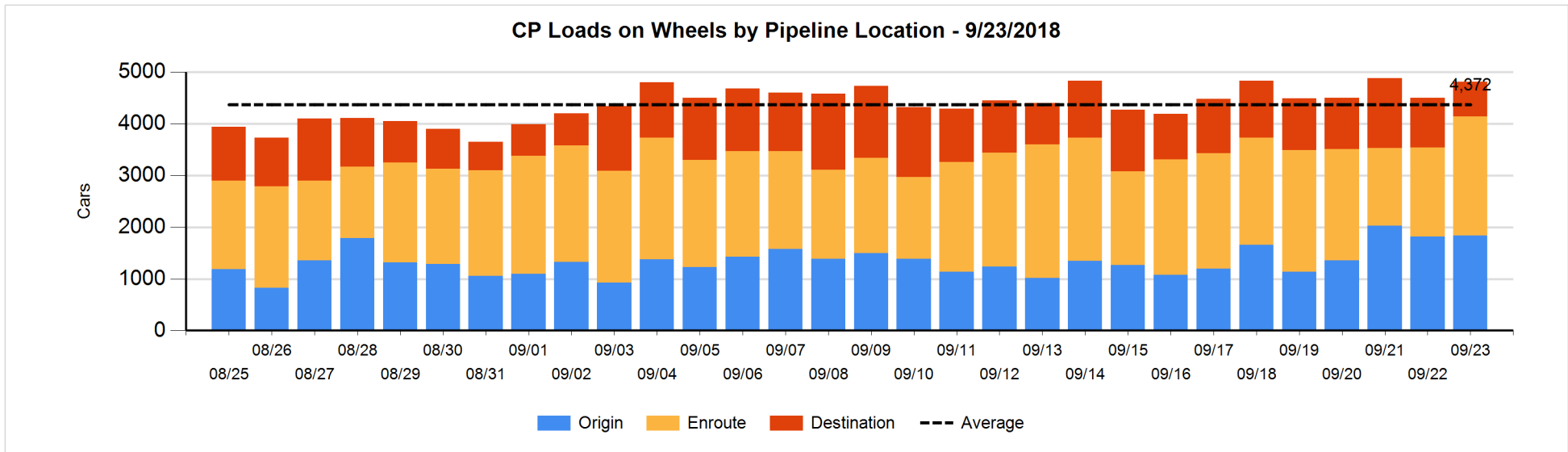
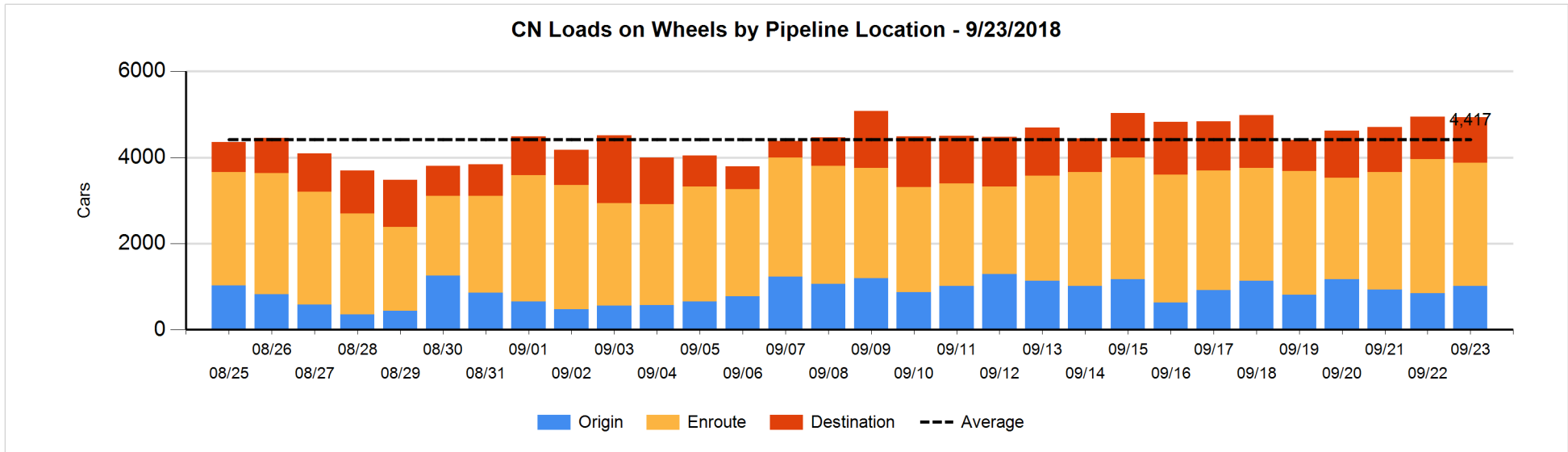


**Daily Loads on Wheels By Pipeline Location - 9/23/2018**

	E Canada	Prince Rupert	Thunder Bay	USA/MEX	Vancouver	Total
CN						
Origin	1	356	48	17	587	1,009
Enroute	302	1,004	208	258	1,094	2,866
Destination	94	54	133	33	750	1,064
	397	1,414	389	308	2,431	4,939
CP						
Origin	122		343	149	1,219	1,833
Enroute	11		422	220	1,658	2,311
Destination	2		283	107	277	669
	135		1,048	476	3,154	4,813
US Rail / Short Line						
Origin				1		1
Enroute	8			138		146
Destination	6			241	22	269
	14			380	22	416

**Change in Daily Loads on Wheels By Pipeline Location - Prior 24 Hours**

	E Canada	Prince Rupert	Thunder Bay	USA/MEX	Vancouver	Total
CN						
Origin	0	204	-53	-5	21	167
Enroute	15	-199	75	-115	-26	-250
Destination	-19	50	26	0	21	78
	-4	55	48	-120	16	-5
CP						
Origin	51		8	-18	-23	18
Enroute	-2		103	12	477	590
Destination	-1		-110	0	-184	-295
	48		1	-6	270	313
US Rail / Short Line						
Origin				0		0
Enroute	0			-20		-20
Destination	0			108	6	114
	0			88	6	94

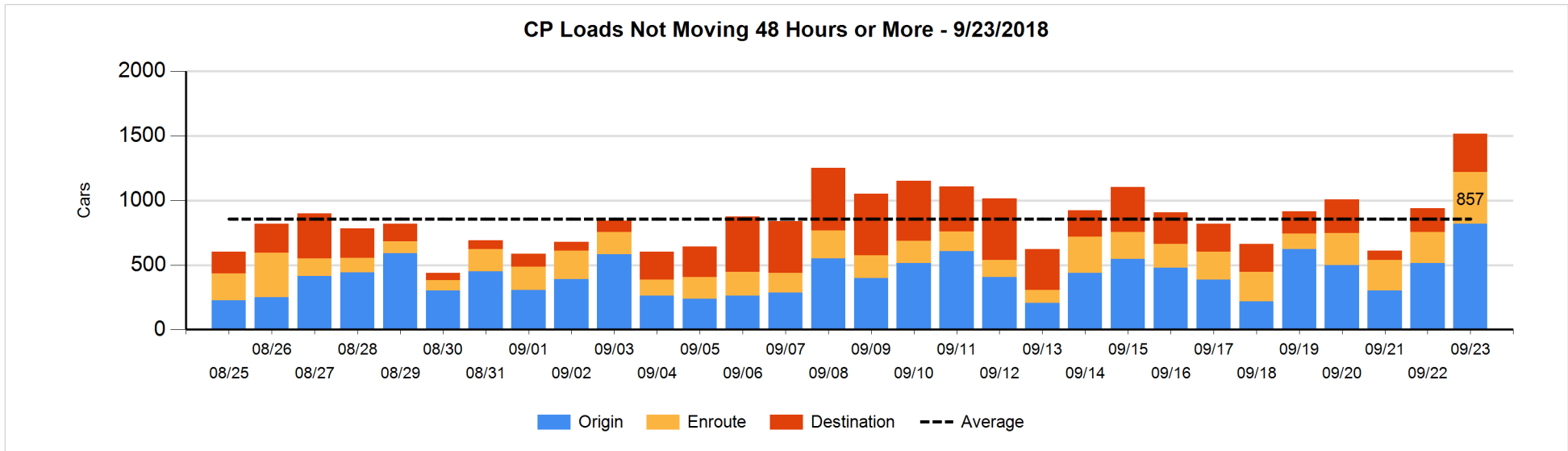
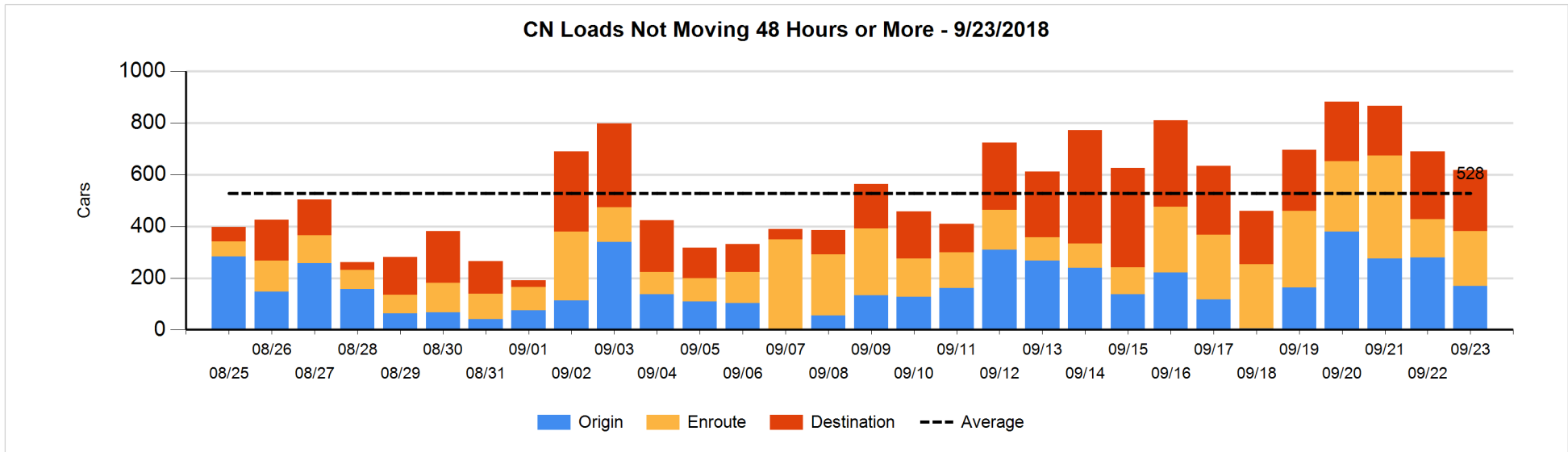


**Loads Not Moving 48 Hours or More - 9/23/2018**

	E Canada	Prince Rupert	Thunder Bay	USA/MEX	Vancouver	Total
<b>CN</b>						
Origin	1	51		17	100	169
Enroute	38	88	2	76	9	213
Destination	54	2	3	27	149	235
	93	141	5	120	258	617
<b>CP</b>						
Origin	28		120	148	525	821
Enroute	4		167	75	152	398
Destination			153	8	138	299
	32		440	231	815	1518
<b>US Rail / Short Line</b>						
Origin				1		1
Enroute	7			17		24
Destination	6			63	6	75
	13			81	6	100

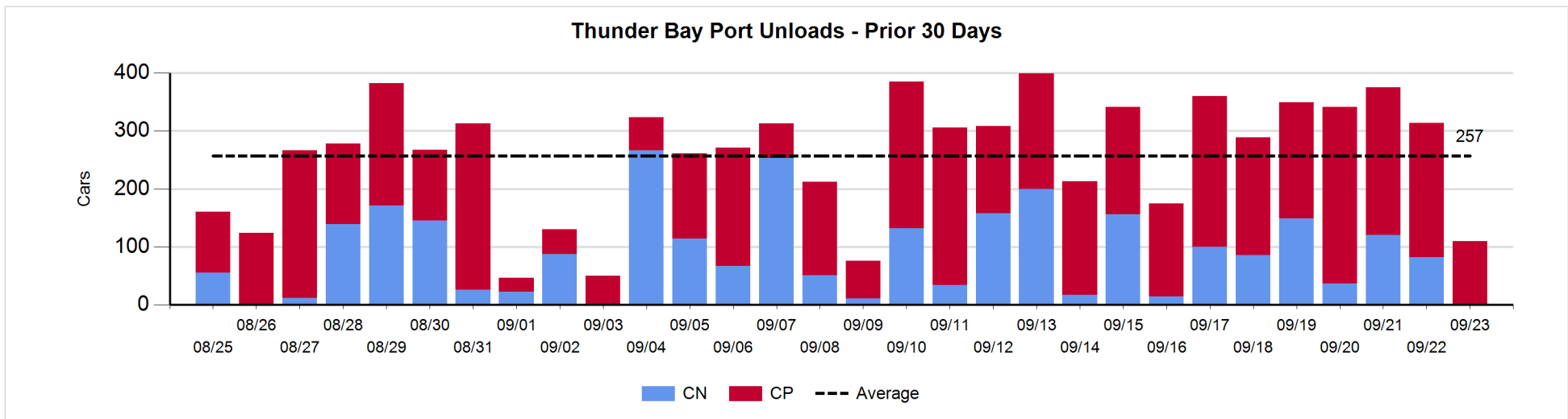
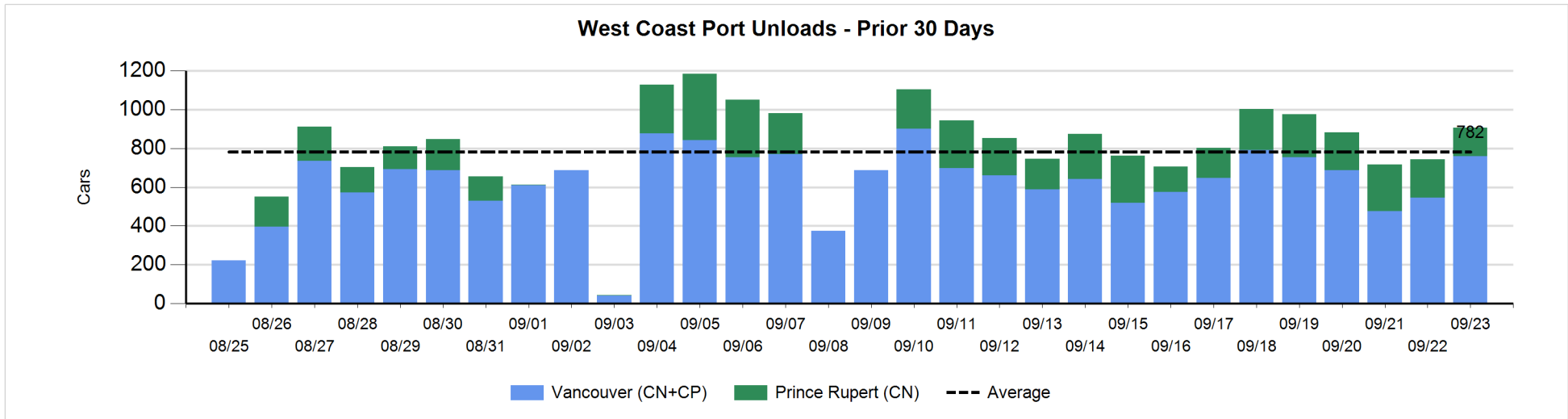
**Change in Loads Not Moving 48 Hours or More - 9/23/2018**

	E Canada	Prince Rupert	Thunder Bay	USA/MEX	Vancouver	Total
<b>CN</b>						
Origin	0	1		8	-119	-110
Enroute	9	85	0	-19	-11	64
Destination	23	0	-2	22	-69	-26
	32	86	-2	11	-199	-72
<b>CP</b>						
Origin	25		120	63	99	307
Enroute	-1		159	1	0	159
Destination	-1		107	-1	6	111
	23		386	63	105	577
<b>US Rail / Short Line</b>						
Origin				1		1
Enroute	0			0		0
Destination	5			11	-2	14
	5			12	-2	15



Port Unloads - 9/23/2018

	Prince Rupert	Vancouver	West Coast Total	Thunder Bay	Total
CN	149	379	528		528
CP		379	379	110	489
	149	758	907	110	1,017





**Port Terminal Status**

**Vancouver**

Daily Activity for 9/23/2018

	Cars Arrived	Cars Received in Interchange	Cars Delivered in Interchange	Cars Placed for Unloading	Loads on Wheels at Destination As of 9/23/2018
CN	308	133	113	143	750
CP	286	113	140	328	277
SRY		7		1	22

**Port Unloads**

	09/23	09/22	Week To Date	Last Week
CN	379	265	1,975	2,011
CP	379	280	2,680	2,570
SRY	1	6	35	41

**Age Profile of Loaded Cars Waiting Placement for Unloading**

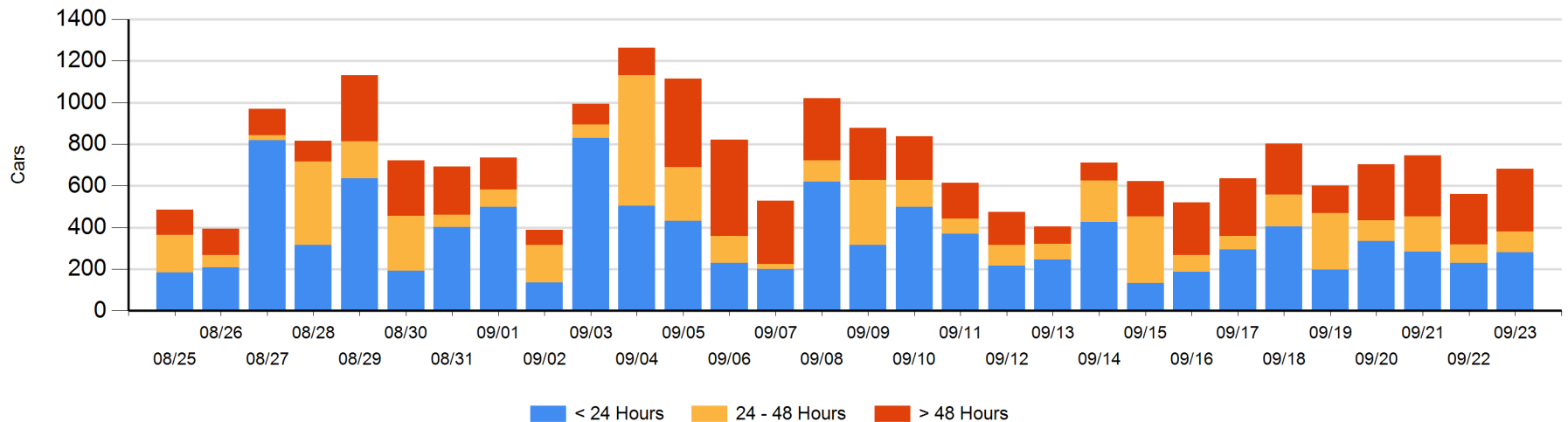
**Today**

	< 24 Hrs	24 - 48 Hrs	> 48-72 Hrs	> 72 Hrs	Total On Hand
CN	257	54	6	113	430
CP	25	44	77	106	252
SRY					0

**Change in Last 24 Hours**

	< 24 Hrs	24-48 Hrs	48 - 72 Hrs	> 72 Hrs
CN	194	48	-35	19
CP	-142	-38	3	71
SRY				

**Loaded Cars on Hand Vancouver Waiting for Placement - Last 30 Days All Railways**



**Port Terminal Status**

**Prince Rupert**

Daily Activity for 9/23/2018

	Cars Arrived	Cars Received in Interchange	Cars Delivered in Interchange	Cars Placed for Unloading	Loads on Wheels at Destination As of 9/23/2018
CN	199			199	54

**Port Unloads**

	09/23	09/22	Week To Date	Last Week
CN	149	198	1,376	1,410

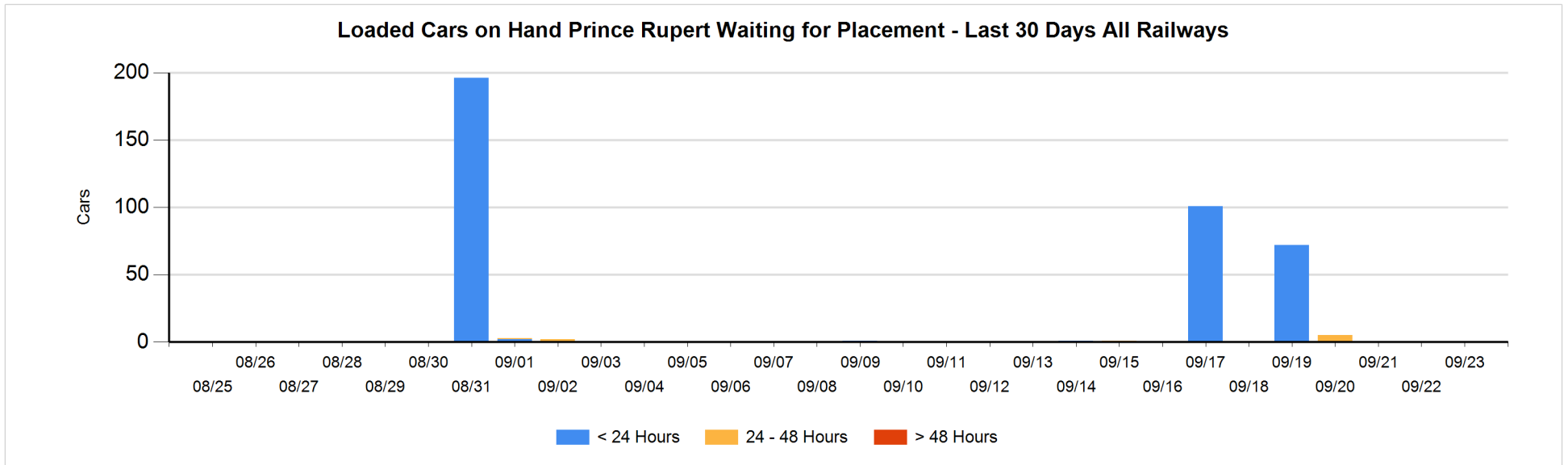
**Age Profile of Loaded Cars Waiting Placement for Unloading**

**Today**

	< 24 Hrs	24 - 48 Hrs	> 48-72 Hrs	> 72 Hrs	Total On Hand
CN					0

**Change in Last 24 Hours**

	< 24 Hrs	24-48 Hrs	48 - 72 Hrs	> 72 Hrs
CN				



**Port Terminal Status**

**Thunder Bay**

Daily Activity for 9/23/2018

	Cars Arrived	Cars Received in Interchange	Cars Delivered in Interchange	Cars Placed for Unloading	Loads on Wheels at Destination As of 9/23/2018
CN	26			59	133
CP				224	283

**Port Unloads**

	09/23	09/22	Week To Date	Last Week
CN		82	574	711
CP	110	232	1,564	1,416

**Age Profile of Loaded Cars Waiting Placement for Unloading**

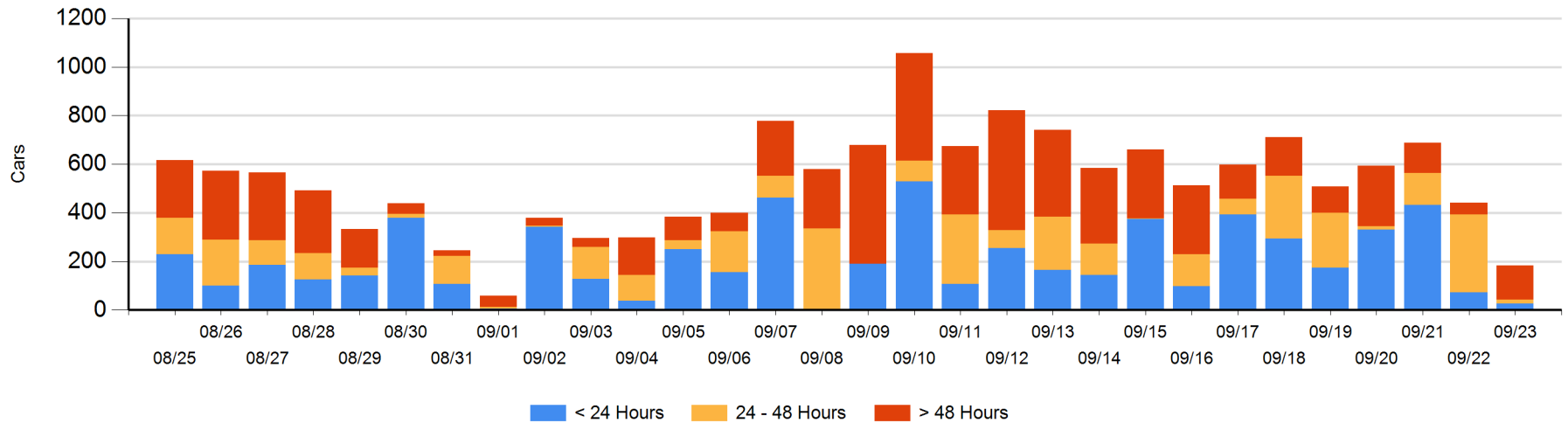
**Today**

	< 24 Hrs	24 - 48 Hrs	> 48-72 Hrs	> 72 Hrs	Total On Hand
CN	26				26
CP		16	132	9	157

**Change in Last 24 Hours**

	< 24 Hrs	24-48 Hrs	48 - 72 Hrs	> 72 Hrs
CN	-30		-3	
CP	-16	-305	94	2

**Loaded Cars on Hand Thunder Bay Waiting for Placement - Last 30 Days All Railways**



## Measurement Definitions

Loads on Wheels	<p>Count of loaded rail cars including all rail cars that have been released loaded at origin and have not been reported by the railway as unloaded at destination.</p> <p>Counts include all rail cars (hopper cars and boxcars) moving within a pipeline.</p>
Loads Not Moving	<p>Loaded rail cars for which the railways have not reported a movement event for 48 hours or more whether the rail car is at origin, enroute or at destination.</p>
Port Unloads	<p>Count of rail cars reported by railways as unloaded at the western port destinations of Vancouver, Prince Rupert and Thunder Bay.</p> <p>Unload counts include all rail cars (hopper cars and boxcars) unloaded by all receivers including major port terminals, transloaders and other receivers.</p>
Cars Arrived	<p>Count of rail cars reported as arrived at the destination railway terminal.</p>
Cars Received in Interchange	<p>Count of rail cars received in interchange by each railway within a destination railway terminal. Interchange activity is tracked for the Vancouver and Thunder Bay pipelines as applicable.</p>
Cars Delivered in Interchange	<p>Count of rail cars delivered in interchange by each railway within a destination railway terminal. Interchange activity is tracked for the Vancouver and Thunder Bay pipelines as applicable.</p>
Cars Placed for Unloading	<p>Count of rail cars reported by the railways as placed loaded at the receiver's facility for unloading.</p>
Loads on Wheels at Destination	<p>Count of rail cars that remain under load within the destination railway terminal including rail cars that have been reported as placed for unloading but not yet reported as unloaded.</p>
Waiting Placement for Unloading	<p>Count of rail cars that have been reported as arrived at the destination railway terminal but not reported as placed for unloading by the railway.</p> <p>For the Ports of Vancouver, Prince Rupert and Thunder Bay the count of rail cars waiting placement for unloading is categorized by age – i.e. the elapsed time from arrival at destination to the current report date.</p>