

## SPEED READ

- Loads on wheels increased overnight, reflecting higher CP traffic offset by a decline in CN volumes. On a net basis, volumes increased due to higher traffic in the Vancouver, Prince Rupert and USA/MEX corridors offset by lower traffic in the Thunder Bay and E. Canada corridors.
- Network fluidity deteriorated overnight, led by a rise in idle car counts on both CN and CP by 24% (+57) and 85% (+389), respectively. The total count of cars for 4+ days on both railways declined 5% (-16) overnight - presently at 318 cars.
- Three days in Week 2 unloads now ahead of prior week's performance by more than 50 unloads, reflecting improved week over week performance at Thunder Bay offset by lower unloads at Vancouver and Prince Rupert.

=====

## Loads on Wheels

- Loads on wheels increased for the third consecutive day, up 2% (+116) overnight, due to higher traffic on CP offset by lower traffic on CN - combined total at 7,390 and 1% below the trailing 30-day average.
- On a net basis, the increase in loads on wheels indicates higher traffic in the Vancouver, Prince Rupert and USA/MEX corridors offset by lower traffic in the Thunder Bay and E. Canada corridors.
- CN volumes declined marginally by 1% (-32) overnight, with lower traffic in the E. Canada, Vancouver and USA/MEX corridors offset by higher volumes in the Prince Rupert and Thunder Bay corridors. System wide CN loads on wheels currently at 3,236 and 9% below the trailing 30-day average.
- CP volumes increased 3% (+123) overnight and have now increased for the third consecutive day, driven by a rise in traffic in the Vancouver corridor offset by a decline in traffic in the Thunder Bay, E. Canada and USA/MEX corridors. CP system wide loads on wheels now at 4,069 and 6% above the trailing 30-day average.
- Vancouver presently at 5,329, the highest seen in the last 30 days, rose 10% (+476) overnight, now 16% above the trailing 30-day average.
- The Prince Rupert pipeline presently at 490, rose for the third consecutive day, up 10% (+46) overnight, and 17% below the trailing 30-day average.
- Thunder Bay volumes declined significantly by 24% (-321) overnight - now at 1,034, the lowest seen in the last 30 days, and 29% below the trailing 30-day average, with 66% of traffic moving on CP.

## Hopper Car Rationing

- No hopper cars were rationed by either CN or CP in week 53.

## Loads Not Moving

- **The count of cars not moving for 48+ hours increased significantly by 64% (+446) overnight, marking higher counts on both CN and CP. Idle car counts currently at 1,141 and 7% above the trailing 30-day average.**
- CN
  - **The count of idle cars for 48+ hours increased 24% (+57) overnight - presently at 293 cars.**
  - The number of cars idle for 4+ days increased 40% (+8) overnight - now at 28 cars.
  - The count of cars not moving for 7+ days increased 17% (+2) overnight - presently at 14 cars.
  - Vancouver represents 13% of all idle cars.
  - In total 0% of all idle cars are dwelling at origin locations.
- CP
  - **CP idle car counts for 48+ hours rose significantly by 85% (+389) overnight - currently at 848 cars.**

- The number of cars idle for 4+ days declined 8% (-24) overnight - presently at 290 cars.
- The number of cars idle for 7+ days increased 2% (+1) overnight - currently at 50 cars.
- Vancouver accounts for 98% of all idle cars.
- In total 46% of all idle cars are dwelling at origin locations.

### **Port Performance**

- CN and CP reported a total of 955 cars unloaded at the three major ports, now 2% above the trailing 30-day average. Three days in Week 2 unloads now ahead of last week's pace by more than 50 unloads, reflecting higher unloads at Thunder Bay offset by lower unloads at Vancouver and Prince Rupert.
- Vancouver
  - 631 unloads reported by CN and CP at the Port of Vancouver; CN - 353 and CP - 278. Three days in Week 2 unloads are tracking behind last week's performance by more than 100 unloads.
  - There are more than 1,300 cars on site at Vancouver with more than 900 cars arriving at the port in the last 24 hours.
  - CN and CP have 1,300 cars in British Columbia en route to Vancouver, with 550 cars at Kamloops and west, and 54% of traffic moving on CP.
- Prince Rupert
  - Prince Rupert reported zero unloads, now behind last week's unloads after three days by 11 unloads.
  - Loads on wheels now below 1,000 cars - currently at 490 cars.
  - There are more than 50 cars west of Jasper en route to Prince Rupert.
  - There are 250 cars on site at Prince Rupert with 22 cars arriving at the port in the last 24 hours.
- Thunder Bay
  - 324 unloads were reported at Thunder Bay yesterday. Three days in Week 2 unloads are tracking ahead of last week's pace by 200 unloads.
  - There are nearly 400 cars on site at Thunder Bay with 300 cars arriving at the port in the prior 24 hours.
  - There are 250 cars en route to Thunder Bay from Winnipeg and east.

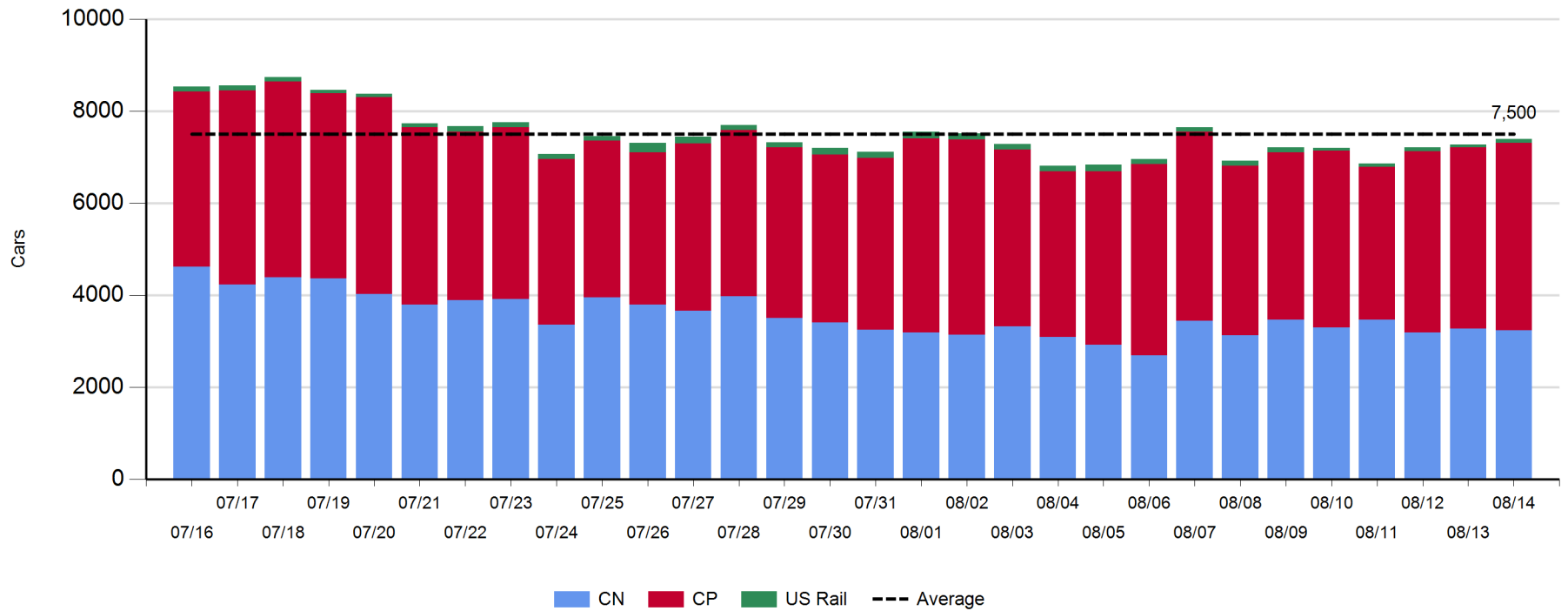
**Daily Loads on Wheels - 8/14/2019**

	E Canada	Prince Rupert	Thunder Bay	USA/MEX	Vancouver	Total
CN	346	490	349	62	1,989	3,236
CP	41		685	9	3,334	4,069
Short Line	6				6	12
US Rail				73		73
	393	490	1,034	144	5,329	7,390

**Change in Loads on Wheels - Prior 24 Hours**

	E Canada	Prince Rupert	Thunder Bay	USA/MEX	Vancouver	Total
CN	-55	46	3	-7	-19	-32
CP	-45		-324	-4	496	123
Short Line	0				-1	-1
US Rail				26		26
	-100	46	-321	15	476	116

**Loads on Wheels - Prior 30 Days**

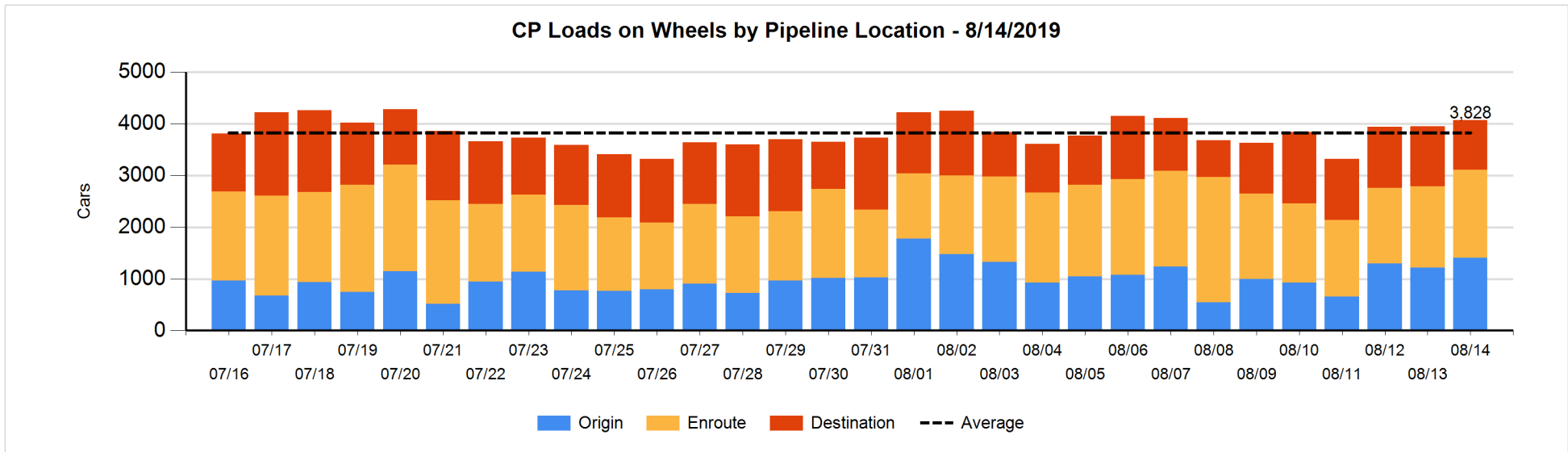
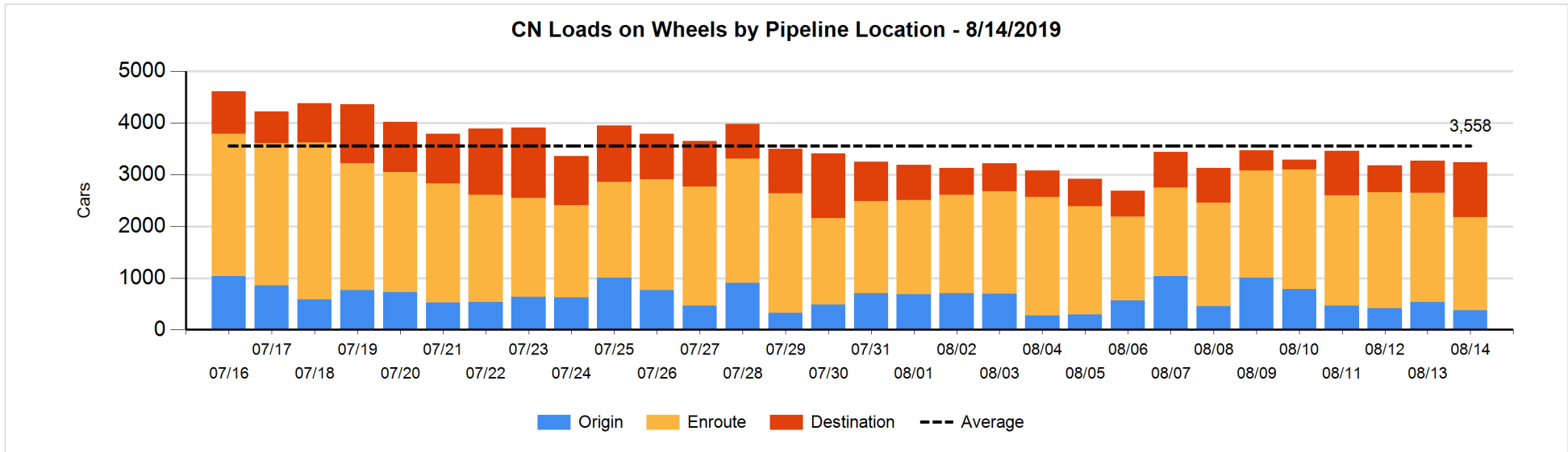


**Daily Loads on Wheels By Pipeline Location - 8/14/2019**

	E Canada	Prince Rupert	Thunder Bay	USA/MEX	Vancouver	Total
CN						
Origin	3	37			330	370
Enroute	296	209	232	45	1,023	1,805
Destination	47	244	117	17	636	1,061
	346	490	349	62	1,989	3,236
CP						
Origin			102	2	1,298	1,402
Enroute	30		317	7	1,352	1,706
Destination	11		266		684	961
	41		685	9	3,334	4,069
US Rail / Short Line						
Origin						
Enroute				56		56
Destination	6			17	6	29
	6			73	6	85

**Change in Daily Loads on Wheels By Pipeline Location - Prior 24 Hours**

	E Canada	Prince Rupert	Thunder Bay	USA/MEX	Vancouver	Total
CN						
Origin	2	-129	-230		197	-160
Enroute	-41	153	130	-11	-545	-314
Destination	-16	22	103	4	329	442
	-55	46	3	-7	-19	-32
CP						
Origin			-111	-5	306	190
Enroute	-30		-89	4	242	127
Destination	-15		-124	-3	-52	-194
	-45		-324	-4	496	123
US Rail / Short Line						
Origin						
Enroute				28		28
Destination	0			-2	-1	-3
	0			26	-1	25

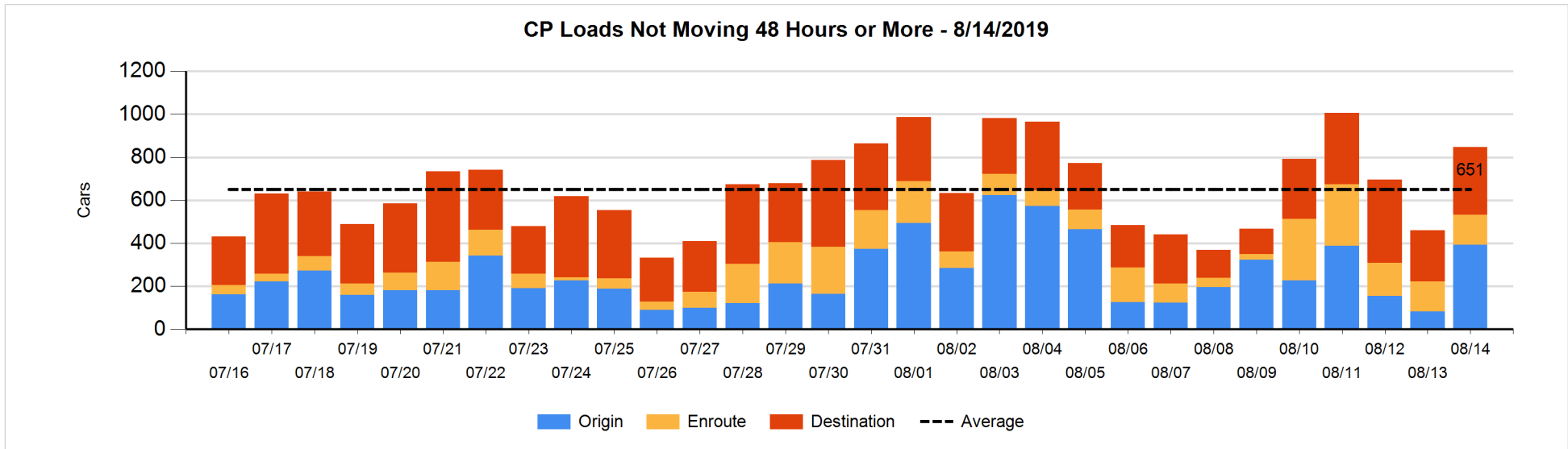
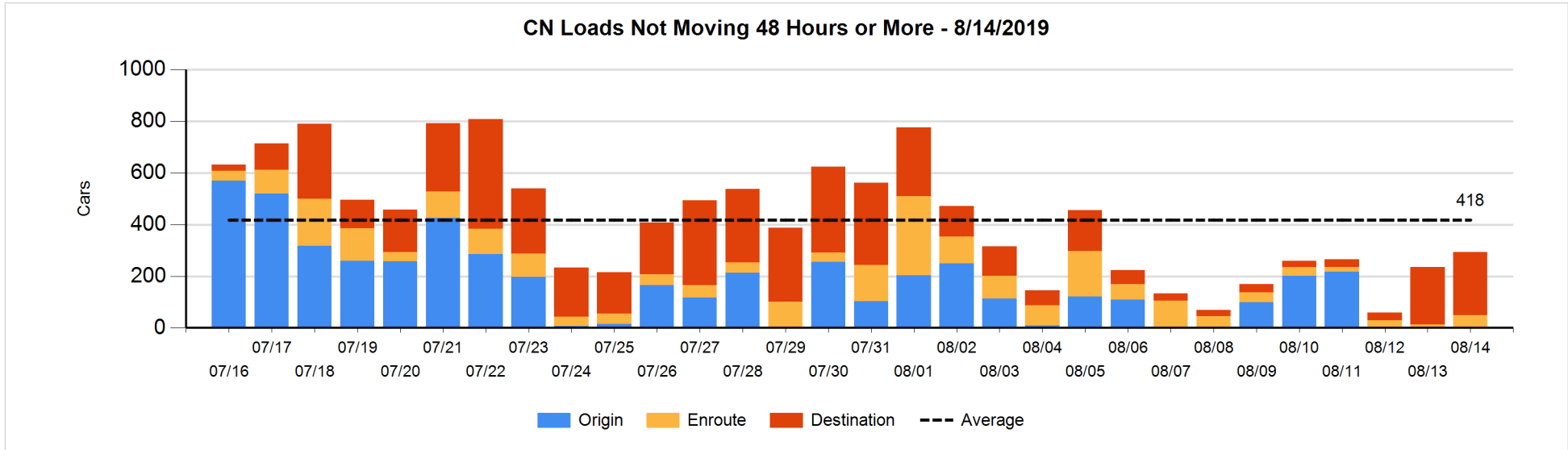


**Loads Not Moving 48 Hours or More - 8/14/2019**

	E Canada	Prince Rupert	Thunder Bay	USA/MEX	Vancouver	Total
<b>CN</b>						
Origin	1					1
Enroute	6	3		1	37	47
Destination	5	222	13	3	2	245
	12	225	13	4	39	293
<b>CP</b>						
Origin				2	390	392
Enroute	2		5	1	133	141
Destination			4		311	315
	2		9	3	834	848
<b>US Rail / Short Line</b>						
Origin						
Enroute				13		13
Destination	4			16	5	25
	4			29	5	38

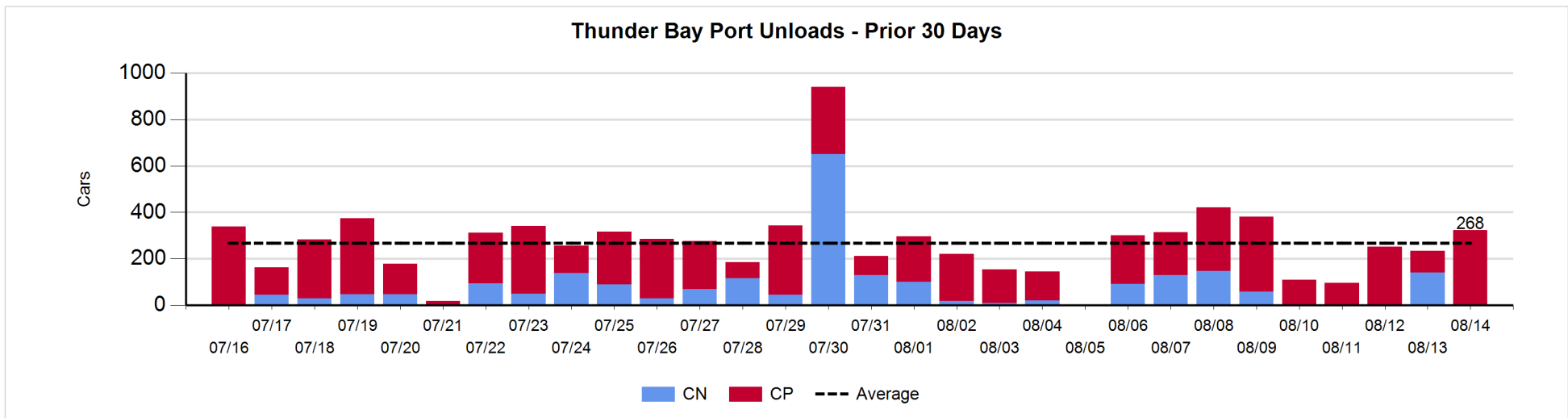
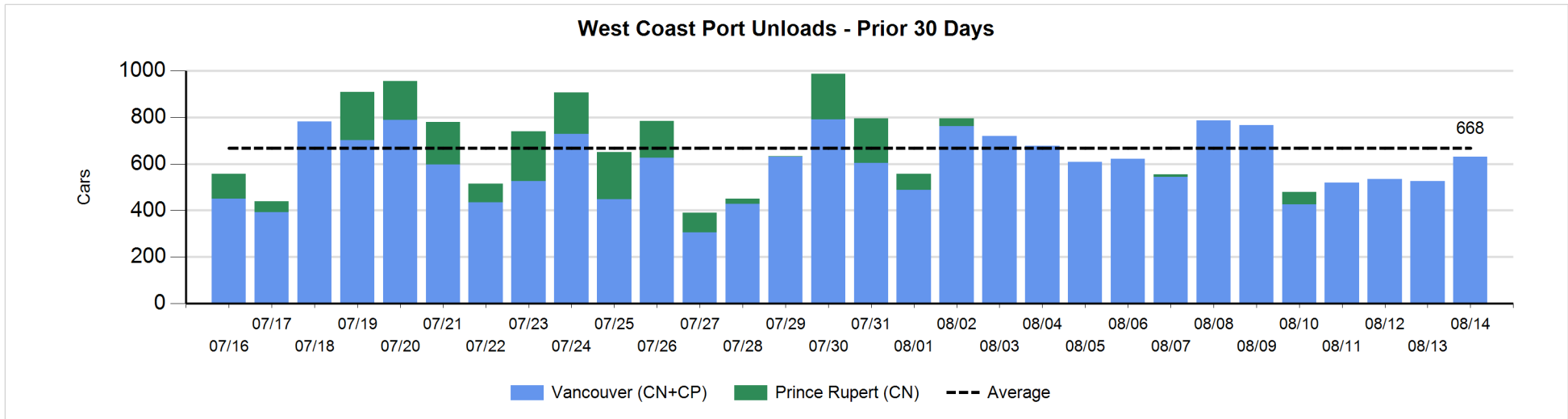
**Change in Loads Not Moving 48 Hours or More - 8/14/2019**

	E Canada	Prince Rupert	Thunder Bay	USA/MEX	Vancouver	Total
<b>CN</b>						
Origin	1					1
Enroute	2	0		0	33	35
Destination	-1	10	11	0	1	21
	2	10	11	0	34	57
<b>CP</b>						
Origin				2	308	310
Enroute	0		0	0	0	0
Destination			-64	-3	146	79
	0		-64	-1	454	389
<b>US Rail / Short Line</b>						
Origin						
Enroute				1		1
Destination	-1			0	1	0
	-1			1	1	1



Port Unloads - 8/14/2019

	Prince Rupert	Vancouver	West Coast Total	Thunder Bay	Total
CN		353	353		353
CP		278	278	324	602
	631	631	631	324	955





## Port Terminal Status

### Vancouver

Daily Activity for 8/14/2019

	Cars Arrived	Cars Received in Interchange	Cars Delivered in Interchange	Cars Placed for Unloading	Loads on Wheels at Destination As of 8/14/2019
CN	526	16	155	312	636
CP	385	155	16	177	684
SRY				3	6

### Port Unloads

	08/14	08/13	Week To Date	Last Week
CN	353	130	681	1,682
CP	278	395	1,010	2,590
SRY	3	10	20	64

## Age Profile of Loaded Cars Waiting Placement for Unloading

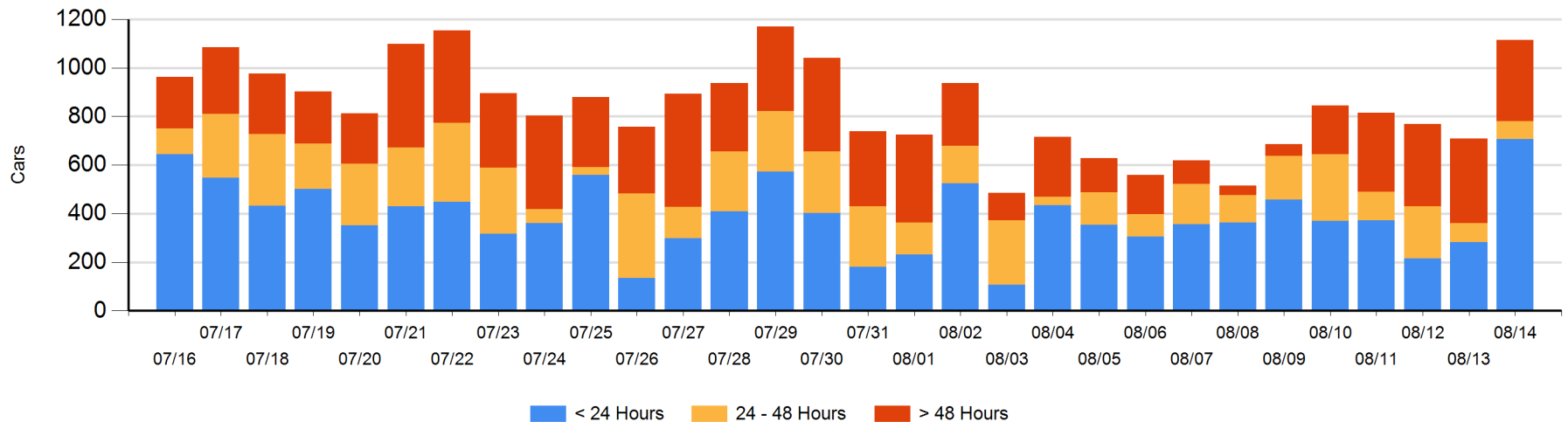
### Today

	< 24 Hrs	24 - 48 Hrs	> 48-72 Hrs	> 72 Hrs	Total On Hand
CN	321	36	41	14	412
CP	385	39	25	253	702
SRY					0

### Change in Last 24 Hours

	< 24 Hrs	24-48 Hrs	48 - 72 Hrs	> 72 Hrs
CN	177	-5	37	1
CP	247	1	-93	41
SRY				

Loaded Cars on Hand Vancouver Waiting for Placement - Last 30 Days All Railways



**Port Terminal Status**

**Prince Rupert**

Daily Activity for 8/14/2019

	Cars Arrived	Cars Received in Interchange	Cars Delivered in Interchange	Cars Placed for Unloading	Loads on Wheels at Destination As of 8/14/2019
CN	22			22	244

**Port Unloads**

	08/14	08/13	Week To Date	Last Week
CN				65

**Age Profile of Loaded Cars Waiting Placement for Unloading**

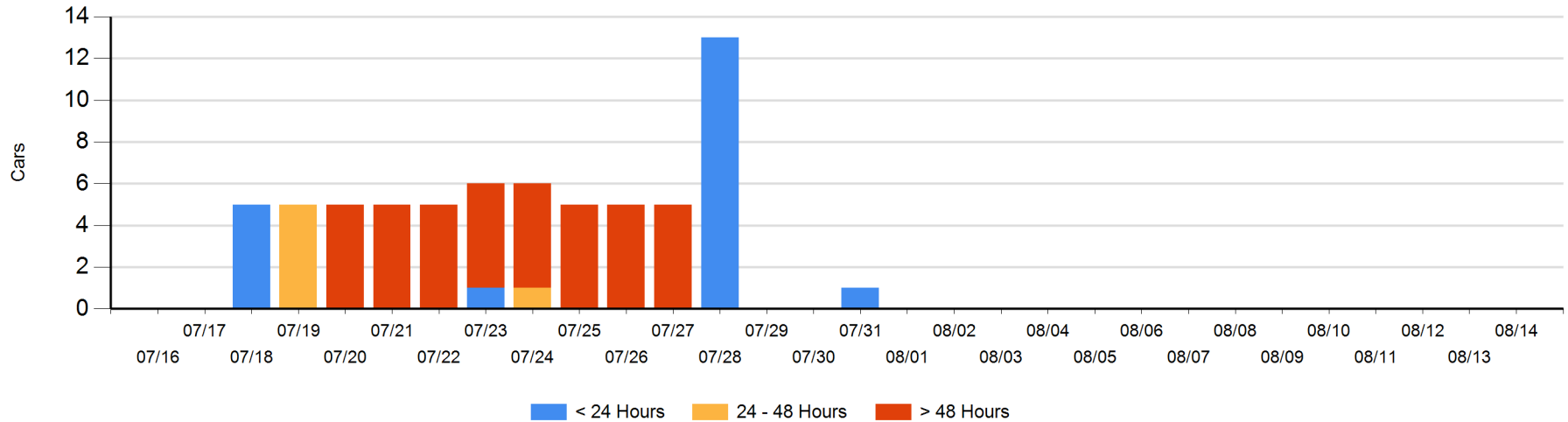
**Today**

	< 24 Hrs	24 - 48 Hrs	> 48-72 Hrs	> 72 Hrs	Total On Hand
CN					0

**Change in Last 24 Hours**

	< 24 Hrs	24-48 Hrs	48 - 72 Hrs	> 72 Hrs
CN				

Loaded Cars on Hand Prince Rupert Waiting for Placement - Last 30 Days All Railways



**Port Terminal Status**

**Thunder Bay**

Daily Activity for 8/14/2019

	Cars Arrived	Cars Received in Interchange	Cars Delivered in Interchange	Cars Placed for Unloading	Loads on Wheels at Destination As of 8/14/2019
CN	102			99	117
CP	200			296	266

**Port Unloads**

	08/14	08/13	Week To Date	Last Week
CN		141	141	426
CP	324	94	670	1,196

**Age Profile of Loaded Cars Waiting Placement for Unloading**

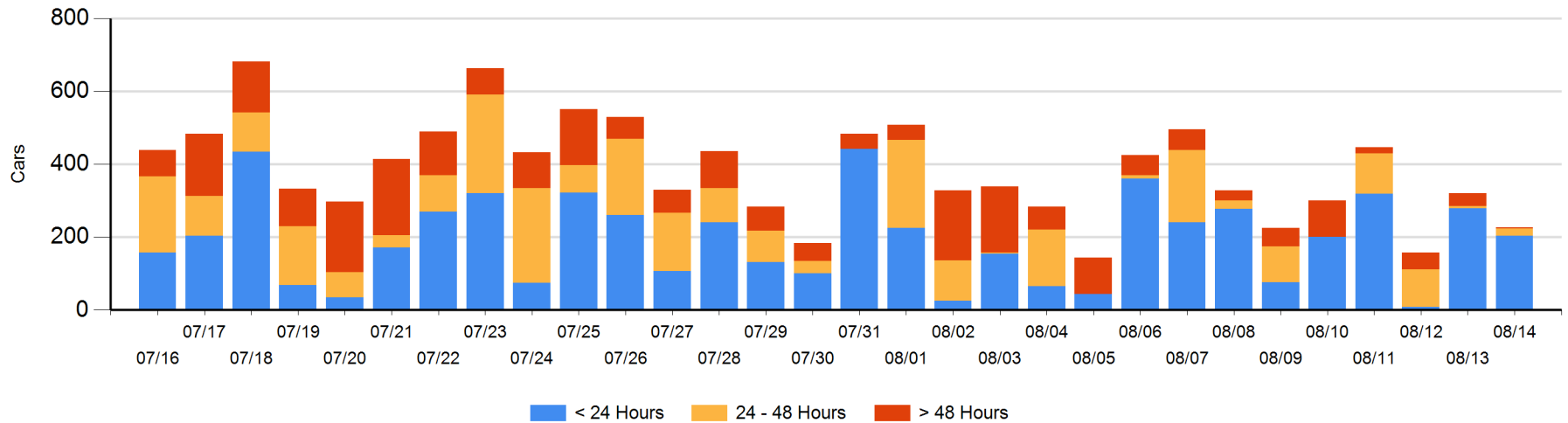
**Today**

	< 24 Hrs	24 - 48 Hrs	> 48-72 Hrs	> 72 Hrs	Total On Hand
CN	3		1		4
CP	200	21	2		223

**Change in Last 24 Hours**

	< 24 Hrs	24-48 Hrs	48 - 72 Hrs	> 72 Hrs
CN	3	-1	1	
CP	-79	16	-31	-2

**Loaded Cars on Hand Thunder Bay Waiting for Placement - Last 30 Days All Railways**



## Measurement Definitions

Loads on Wheels	<p>Count of loaded rail cars including all rail cars that have been released loaded at origin and have not been reported by the railway as unloaded at destination.</p> <p>Counts include all rail cars (hopper cars and boxcars) moving within a pipeline.</p>
Loads Not Moving	<p>Loaded rail cars for which the railways have not reported a movement event for 48 hours or more whether the rail car is at origin, enroute or at destination.</p>
Port Unloads	<p>Count of rail cars reported by railways as unloaded at the western port destinations of Vancouver, Prince Rupert and Thunder Bay.</p> <p>Unload counts include all rail cars (hopper cars and boxcars) unloaded by all receivers including major port terminals, transloaders and other receivers.</p>
Cars Arrived	<p>Count of rail cars reported as arrived at the destination railway terminal.</p>
Cars Received in Interchange	<p>Count of rail cars received in interchange by each railway within a destination railway terminal. Interchange activity is tracked for the Vancouver and Thunder Bay pipelines as applicable.</p>
Cars Delivered in Interchange	<p>Count of rail cars delivered in interchange by each railway within a destination railway terminal. Interchange activity is tracked for the Vancouver and Thunder Bay pipelines as applicable.</p>
Cars Placed for Unloading	<p>Count of rail cars reported by the railways as placed loaded at the receiver's facility for unloading.</p>
Loads on Wheels at Destination	<p>Count of rail cars that remain under load within the destination railway terminal including rail cars that have been reported as placed for unloading but not yet reported as unloaded.</p>
Waiting Placement for Unloading	<p>Count of rail cars that have been reported as arrived at the destination railway terminal but not reported as placed for unloading by the railway.</p> <p>For the Ports of Vancouver, Prince Rupert and Thunder Bay the count of rail cars waiting placement for unloading is categorized by age – i.e. the elapsed time from arrival at destination to the current report date.</p>