

SPEED READ

- Loads on wheels fell overnight, marking lower CP volumes offset by a rise in CN volumes. On a net basis, volumes decreased due to lower volumes in the Vancouver, E. Canada and USA/MEX corridors offset by higher volumes in the Prince Rupert and Thunder Bay corridors.
- Network fluidity improved overnight, led by a decline in idle car counts on both CN and CP by 20% (-133) and 28% (-306), respectively. The total count of cars for 4+ days on both railways decreased 13% (-76) overnight - now at 507 cars.
- One day in Week 3 unloads now ahead of prior week's performance by more than 200 unloads, marking improved week over week performance at Vancouver and Prince Rupert offset by reduced unloads at Thunder Bay.

=====

Loads on Wheels

- Loads on wheels fell 5% (-338) overnight, due to lower volumes on CP offset by higher volumes on CN - combined total at 6,867 and 6% below the trailing 30-day average.
- On a net basis, the decline in loads on wheels reflects lower volumes in the Vancouver, E. Canada and USA/MEX corridors offset by higher volumes in the Prince Rupert and Thunder Bay corridors.
- CN volumes rose 2% (+85) overnight and have now increased for the third consecutive day, with higher volumes in the Vancouver and Prince Rupert corridors offset by lower volumes in the Thunder Bay, E. Canada and USA/MEX corridors. System wide CN loads on wheels now at 3,807 and 12% above the trailing 30-day average.
- CP volumes decreased for the fourth consecutive day, down 12% (-409) overnight, driven by a decline in volumes in the Vancouver corridor offset by a rise in volumes in the Thunder Bay and USA/MEX corridors. CP system wide loads on wheels presently at 2,970, the lowest seen in the last 30 days, and 21% below the trailing 30-day average.
- Vancouver now at 4,142, decreased 8% (-377) overnight and have now decreased for the fifth consecutive day, now 10% below the trailing 30-day average.
- The Prince Rupert pipeline now at 858, gained for the eighth consecutive day, up 5% (+42) overnight, and 69% above the trailing 30-day average.
- Thunder Bay volumes increased 2% (+21) overnight - currently at 1,197 and 13% below the trailing 30-day average, with 64% of traffic moving on CP.

Hopper Car Rationing

- No hopper cars were rationed by either CN or CP in week 1.

Loads Not Moving

- **The count of cars not moving for 48+ hours decreased 25% (-439) overnight, reflecting reduced counts on both CN and CP. Idle car counts now at 1,306 and 19% above the trailing 30-day average.**
- CN
 - **The count of idle cars for 48+ hours fell 20% (-133) overnight - now at 538 cars.**
 - The number of cars idle for 4+ days gained for the seventh consecutive day, up 10% (+29) overnight - now at 334 cars.
 - The count of cars not moving for 7+ days fell 22% (-47) overnight - presently at 167 cars.
 - Vancouver represents 36% of all idle cars.
 - In total 5% of all idle cars are dwelling at origin locations.
- CP
 - **CP idle car counts for 48+ hours decreased 28% (-306) overnight - currently at 768 cars.**

- The number of cars idle for 4+ days decreased 38% (-105) overnight - now at 173 cars.
- The number of cars idle for 7+ days decreased for the third consecutive day, down 28% (-53) overnight - now at 133 cars.
- Vancouver accounts for 82% of all idle cars.
- In total 27% of all idle cars are dwelling at origin locations.

Port Performance

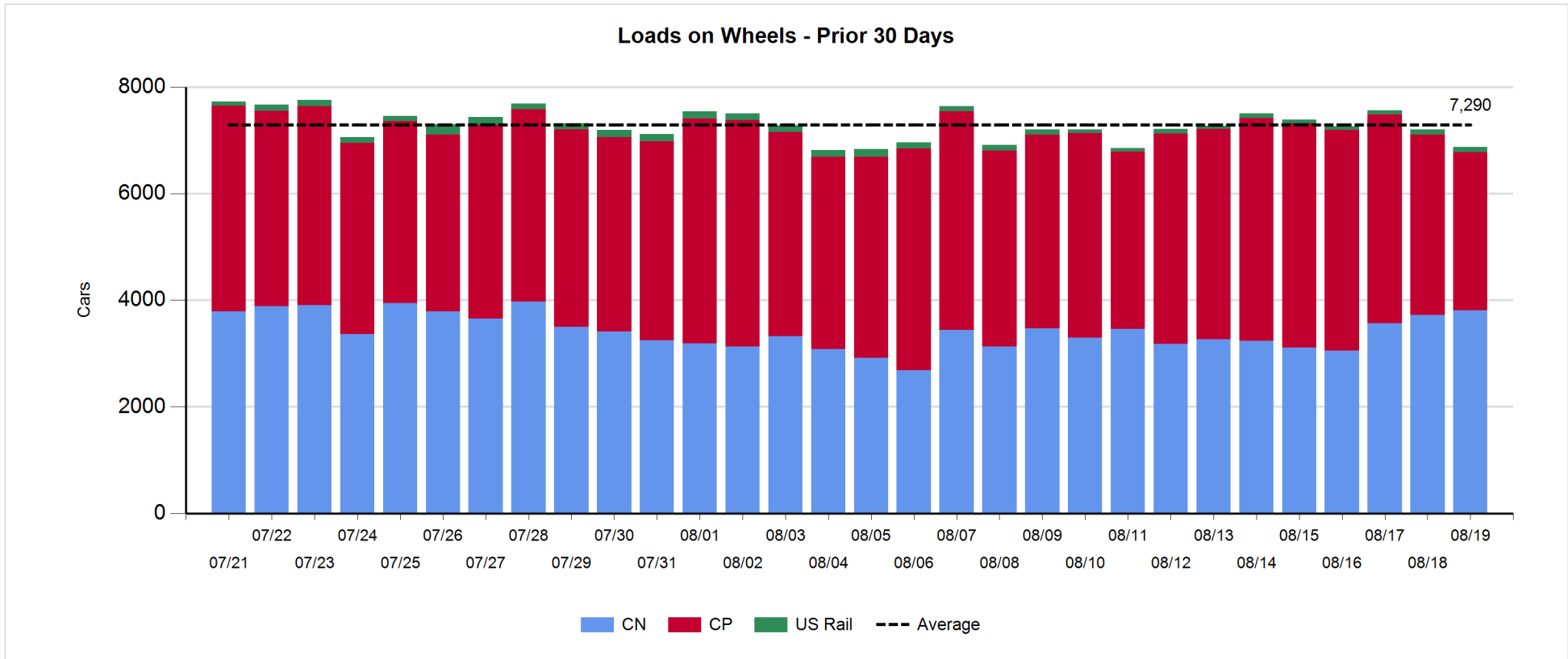
- CN and CP reported a total of 1,009 cars unloaded at the three major ports, now 10% above the trailing 30-day average. One day in Week 3 unloads now ahead of last week's pace by more than 200 unloads, marking higher unloads at Vancouver and Prince Rupert offset by reduced unloads at Thunder Bay.
- Vancouver
 - 743 unloads reported by CN and CP at the Port of Vancouver; CN - 324 and CP - 419. One day in Week 3 unloads are tracking ahead of last week's performance by more than 200 unloads.
 - There are less than 1,700 cars on site at Vancouver with more than 900 cars arriving at the port in the last 24 hours.
 - CN and CP have 750 cars in British Columbia en route to Vancouver, with more than 450 cars at Kamloops and west, and 54% of traffic moving on CP.
- Prince Rupert
 - Prince Rupert reported 77 unloads, now ahead of last week's unloads after one day by more than 50 unloads.
 - Loads on wheels now below 1,000 cars - currently at 858 cars.
 - There are more than 150 cars west of Jasper en route to Prince Rupert.
 - There are more than 400 cars on site at Prince Rupert with fewer than 150 cars arriving at the port in the last 24 hours.
- Thunder Bay
 - 189 unloads were reported at Thunder Bay yesterday. One day in Week 3 unloads are tracking behind last week's pace by more than 50 unloads.
 - There are more than 500 cars on site at Thunder Bay with 300 cars arriving at the port in the prior 24 hours.
 - There are more than 300 cars en route to Thunder Bay from Winnipeg and east.

Daily Loads on Wheels - 8/19/2019

	E Canada	Prince Rupert	Thunder Bay	USA/MEX	Vancouver	Total
CN	457	858	431	128	1,933	3,807
CP	17		766	11	2,176	2,970
Short Line	5				33	38
US Rail				52		52
	479	858	1,197	191	4,142	6,867

Change in Loads on Wheels - Prior 24 Hours

	E Canada	Prince Rupert	Thunder Bay	USA/MEX	Vancouver	Total
CN	-16	42	-78	-5	142	85
CP	0		99	3	-511	-409
Short Line	-4				3	-1
US Rail				-2	-11	-13
	-20	42	21	-4	-377	-338

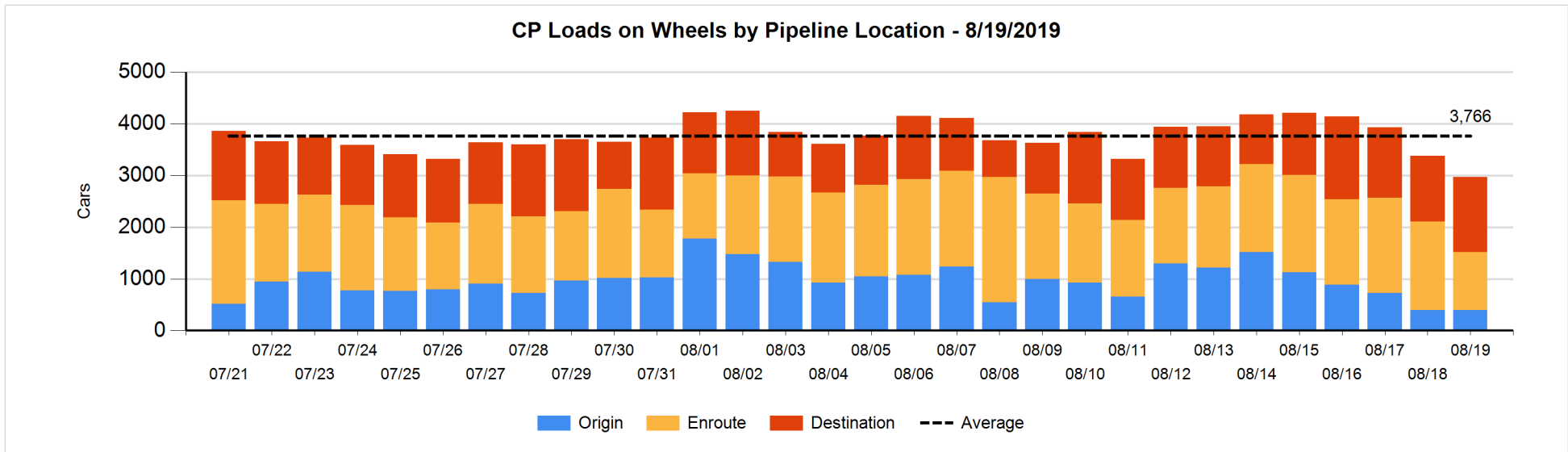
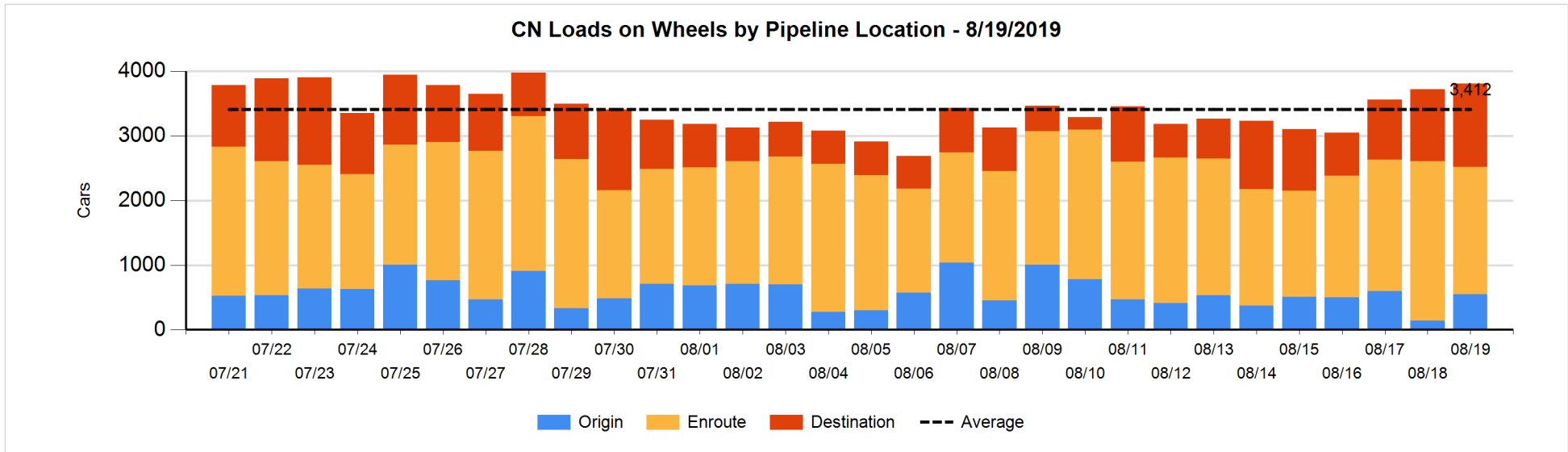


Daily Loads on Wheels By Pipeline Location - 8/19/2019

	E Canada	Prince Rupert	Thunder Bay	USA/MEX	Vancouver	Total
CN						
Origin	33	148		4	365	550
Enroute	288	295	207	114	1,062	1,966
Destination	136	415	224	10	506	1,291
	457	858	431	128	1,933	3,807
CP						
Origin	6		138		249	393
Enroute	2		324	11	785	1,122
Destination	9		304		1,142	1,455
	17		766	11	2,176	2,970
US Rail / Short Line						
Origin						
Enroute				38		38
Destination	5			14	33	52
	5			52	33	90

Change in Daily Loads on Wheels By Pipeline Location - Prior 24 Hours

	E Canada	Prince Rupert	Thunder Bay	USA/MEX	Vancouver	Total
CN						
Origin	33	119		1	254	407
Enroute	-58	-137	-101	0	-203	-499
Destination	9	60	23	-6	91	177
	-16	42	-78	-5	142	85
CP						
Origin	0		110		-109	1
Enroute	-1		-103	3	-490	-591
Destination	1		92		88	181
	0		99	3	-511	-409
US Rail / Short Line						
Origin	-4					-4
Enroute				-4		-4
Destination	0			2	-8	-6
	-4			-2	-8	-14

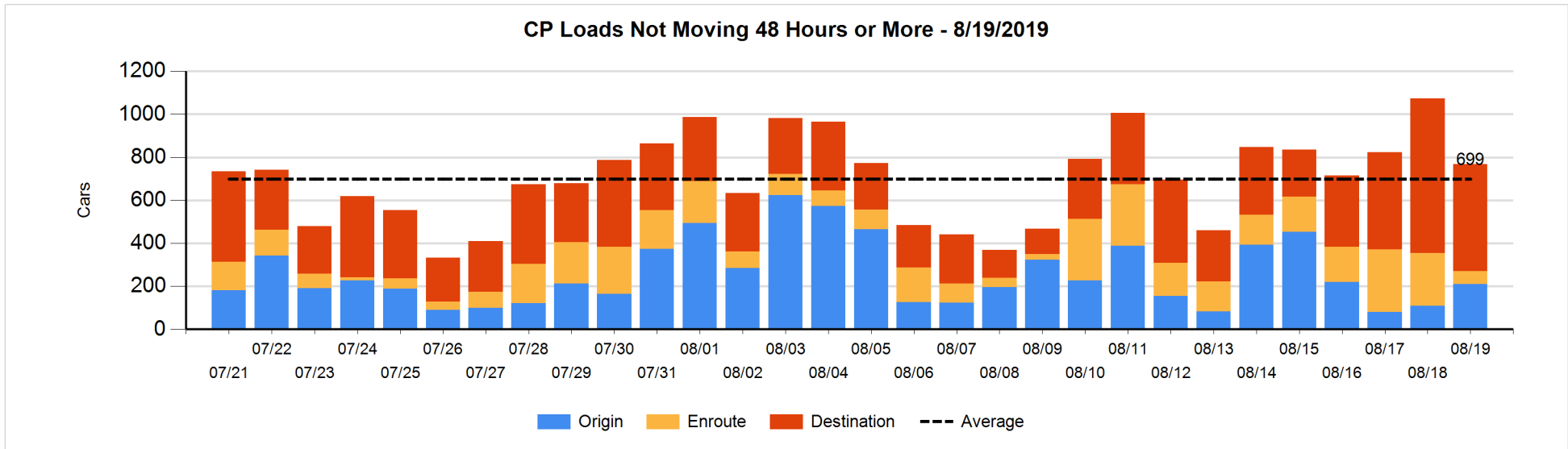
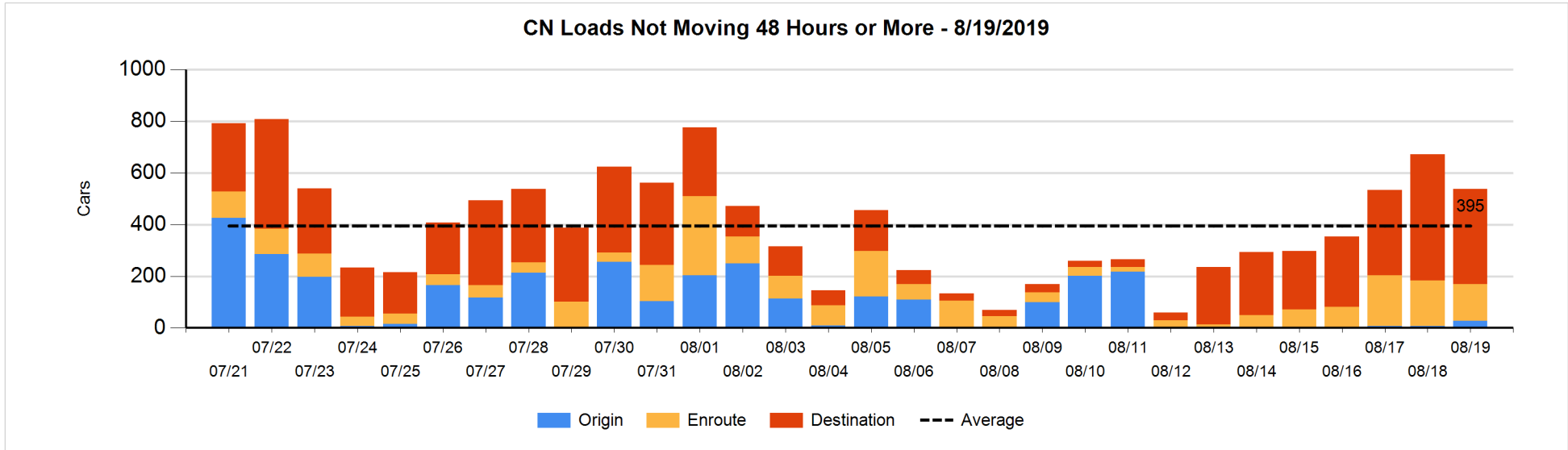


Loads Not Moving 48 Hours or More - 8/19/2019

	E Canada	Prince Rupert	Thunder Bay	USA/MEX	Vancouver	Total
CN						
Origin		14			12	26
Enroute	6	17		3	117	143
Destination	63	165	72	3	66	369
	69	196	72	6	195	538
CP						
Origin	5		27		177	209
Enroute			1	1	60	62
Destination	8		97		392	497
	13		125	1	629	768
US Rail / Short Line						
Origin						
Enroute				11		11
Destination	5			10	2	17
	5			21	2	28

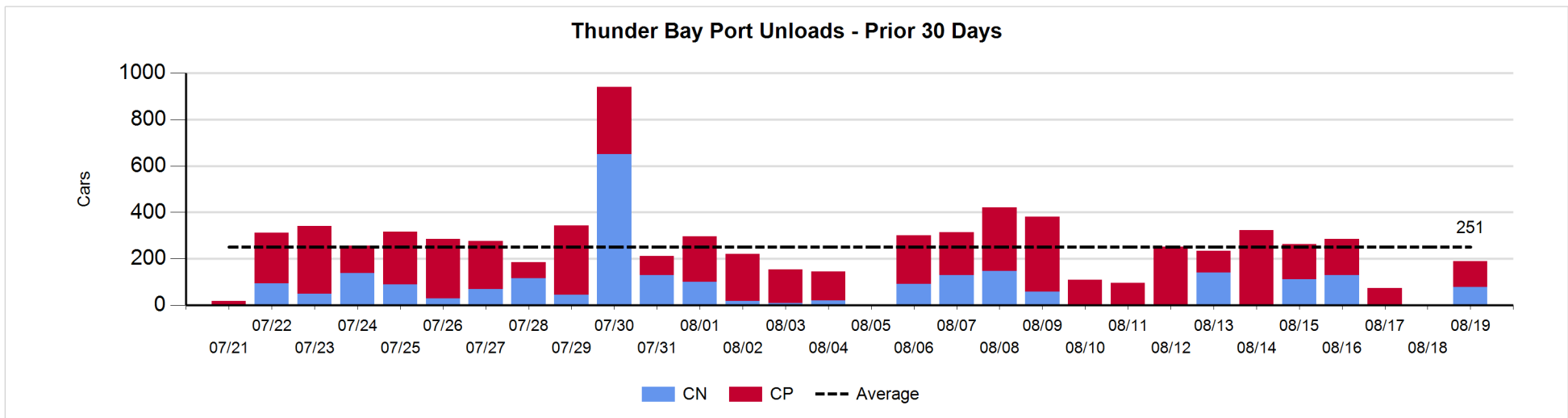
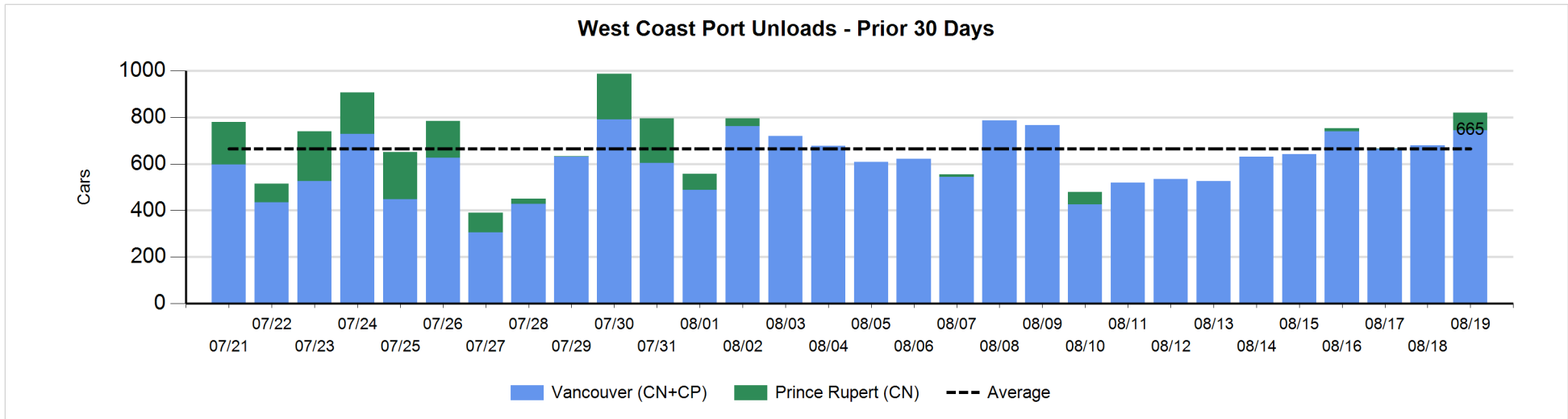
Change in Loads Not Moving 48 Hours or More - 8/19/2019

	E Canada	Prince Rupert	Thunder Bay	USA/MEX	Vancouver	Total
CN						
Origin		13		-3	9	19
Enroute	-52	15		0	3	-34
Destination	-1	-77	-35	-12	7	-118
	-53	-49	-35	-15	19	-133
CP						
Origin	0		-1		100	99
Enroute			0	-2	-180	-182
Destination	0		-4		-219	-223
	0		-5	-2	-299	-306
US Rail / Short Line						
Origin	-4					-4
Enroute				-2		-2
Destination	0			2	-1	1
	-4			0	-1	-5



Port Unloads - 8/19/2019

	Prince Rupert	Vancouver	West Coast Total	Thunder Bay	Total
CN	77	324	401	78	479
CP		419	419	111	530
	77	743	820	189	1,009



Port Terminal Status

Vancouver

Daily Activity for 8/19/2019

	Cars Arrived	Cars Received in Interchange	Cars Delivered in Interchange	Cars Placed for Unloading	Loads on Wheels at Destination As of 8/19/2019
CN	48	333	207	221	506
CP	878	207	333	431	1,142
SRY				13	33

Port Unloads

	08/19	08/18	Week To Date	Last Week
CN	324	253	324	1,678
CP	419	427	419	2,740
SRY	12		12	25

Age Profile of Loaded Cars Waiting Placement for Unloading

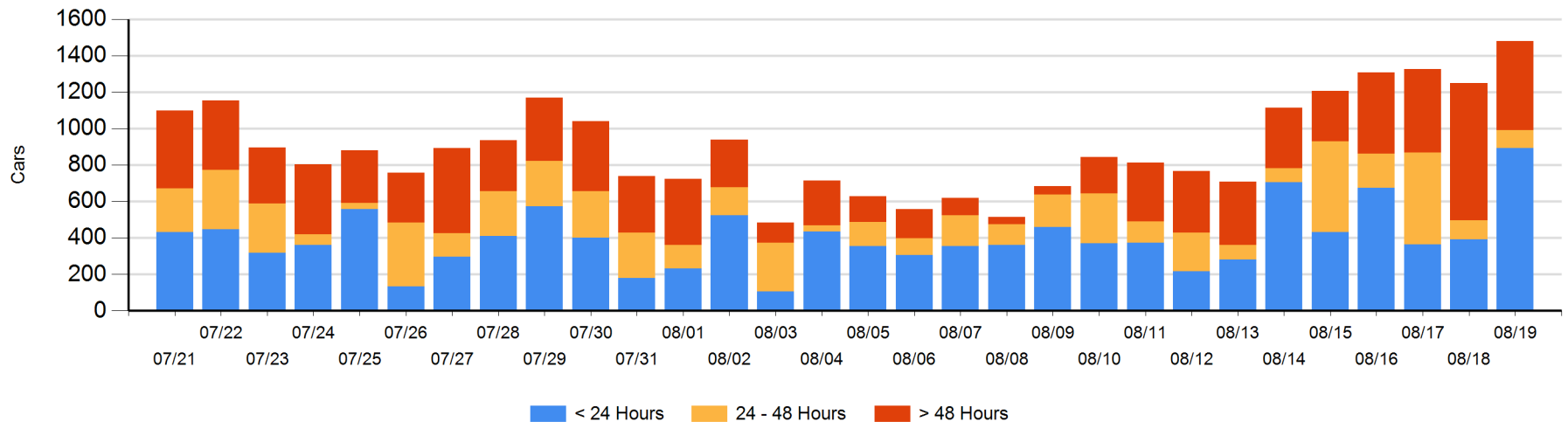
Today

	< 24 Hrs	24 - 48 Hrs	> 48-72 Hrs	> 72 Hrs	Total On Hand
CN	45	25	23	96	189
CP	849	72	29	342	1,292
SRY					0

Change in Last 24 Hours

	< 24 Hrs	24-48 Hrs	48 - 72 Hrs	> 72 Hrs
CN	-73	-50	18	-39
CP	575	43	-396	155
SRY	-1			

Loaded Cars on Hand Vancouver Waiting for Placement - Last 30 Days All Railways



Port Terminal Status

Prince Rupert

Daily Activity for 8/19/2019

	Cars Arrived	Cars Received in Interchange	Cars Delivered in Interchange	Cars Placed for Unloading	Loads on Wheels at Destination As of 8/19/2019
CN	137			137	415

Port Unloads

	08/19	08/18	Week To Date	Last Week
CN	77		77	13

Age Profile of Loaded Cars Waiting Placement for Unloading

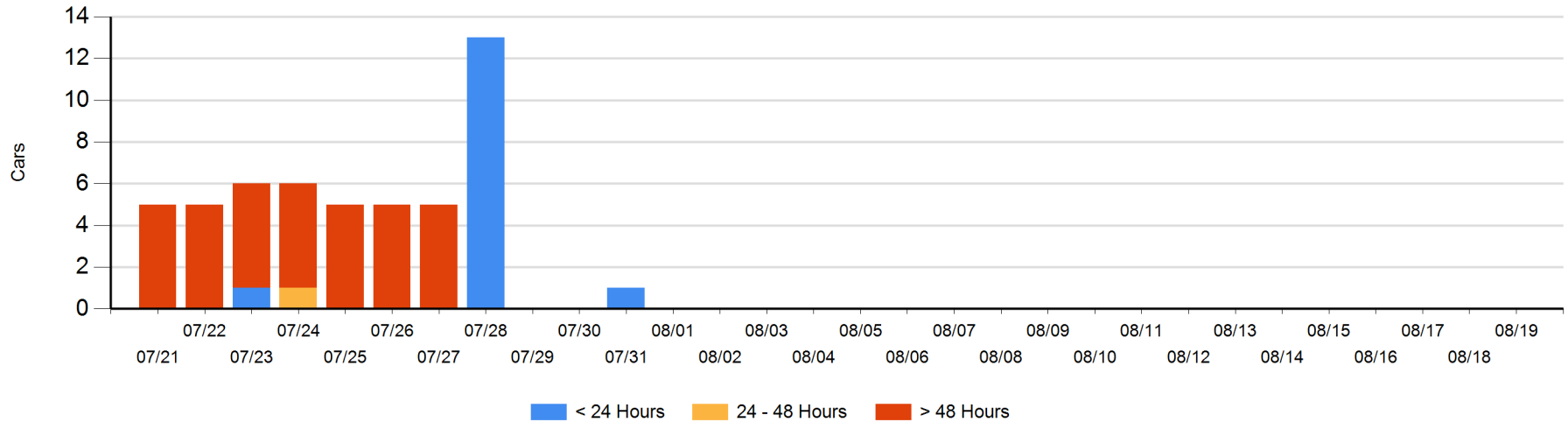
Today

	< 24 Hrs	24 - 48 Hrs	> 48-72 Hrs	> 72 Hrs	Total On Hand
CN					0

Change in Last 24 Hours

	< 24 Hrs	24-48 Hrs	48 - 72 Hrs	> 72 Hrs
CN				

Loaded Cars on Hand Prince Rupert Waiting for Placement - Last 30 Days All Railways



Port Terminal Status

Thunder Bay

Daily Activity for 8/19/2019

	Cars Arrived	Cars Received in Interchange	Cars Delivered in Interchange	Cars Placed for Unloading	Loads on Wheels at Destination As of 8/19/2019
CN	101			152	224
CP	203			5	304

Port Unloads

	08/19	08/18	Week To Date	Last Week
CN	78		78	383
CP	111		111	1,050

Age Profile of Loaded Cars Waiting Placement for Unloading

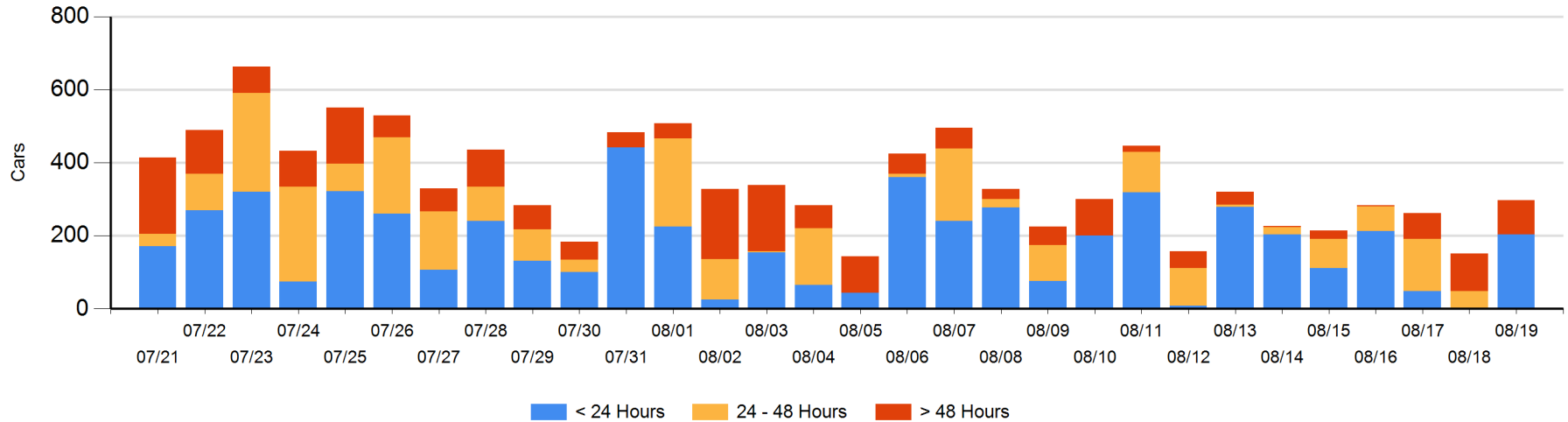
Today

	< 24 Hrs	24 - 48 Hrs	> 48-72 Hrs	> 72 Hrs	Total On Hand
CN					0
CP	203		1	94	298

Change in Last 24 Hours

	< 24 Hrs	24-48 Hrs	48 - 72 Hrs	> 72 Hrs
CN		-47		-4
CP	203	-1	-98	94

Loaded Cars on Hand Thunder Bay Waiting for Placement - Last 30 Days All Railways



Measurement Definitions

Loads on Wheels	<p>Count of loaded rail cars including all rail cars that have been released loaded at origin and have not been reported by the railway as unloaded at destination.</p> <p>Counts include all rail cars (hopper cars and boxcars) moving within a pipeline.</p>
Loads Not Moving	<p>Loaded rail cars for which the railways have not reported a movement event for 48 hours or more whether the rail car is at origin, enroute or at destination.</p>
Port Unloads	<p>Count of rail cars reported by railways as unloaded at the western port destinations of Vancouver, Prince Rupert and Thunder Bay.</p> <p>Unload counts include all rail cars (hopper cars and boxcars) unloaded by all receivers including major port terminals, transloaders and other receivers.</p>
Cars Arrived	<p>Count of rail cars reported as arrived at the destination railway terminal.</p>
Cars Received in Interchange	<p>Count of rail cars received in interchange by each railway within a destination railway terminal. Interchange activity is tracked for the Vancouver and Thunder Bay pipelines as applicable.</p>
Cars Delivered in Interchange	<p>Count of rail cars delivered in interchange by each railway within a destination railway terminal. Interchange activity is tracked for the Vancouver and Thunder Bay pipelines as applicable.</p>
Cars Placed for Unloading	<p>Count of rail cars reported by the railways as placed loaded at the receiver's facility for unloading.</p>
Loads on Wheels at Destination	<p>Count of rail cars that remain under load within the destination railway terminal including rail cars that have been reported as placed for unloading but not yet reported as unloaded.</p>
Waiting Placement for Unloading	<p>Count of rail cars that have been reported as arrived at the destination railway terminal but not reported as placed for unloading by the railway.</p> <p>For the Ports of Vancouver, Prince Rupert and Thunder Bay the count of rail cars waiting placement for unloading is categorized by age – i.e. the elapsed time from arrival at destination to the current report date.</p>