

SPEED READ

- Loads on wheels decreased overnight, marking a decline in both CN and CP volumes. On a net basis, volumes decreased due to lower volumes in the Vancouver, Thunder Bay and E. Canada corridors offset by higher traffic in the USA/MEX and Prince Rupert corridors.
- Network fluidity deteriorated overnight, led by an increase in idle car counts on CN by 18% (+64) offset by a decline in idle car counts on CP by 2% (-11). The total count of cars for 4+ days on both railways decreased 25% (-118) overnight and have now decreased for the third consecutive day - presently at 352 cars.
- Three days in Week 3 unloads now ahead of prior week's performance by around 750 unloads, reflecting improved week over week performance at Prince Rupert and Vancouver offset by reduced unloads at Thunder Bay.

Loads on Wheels

- Loads on wheels declined for the fourth consecutive day, down 7% (-450) overnight, due to lower volumes on both CN and CP - combined total at 6,276, the lowest seen in the last 30 days, and 13% below the trailing 30-day average.
- On a net basis, the decline in loads on wheels reflects lower volumes in the Vancouver, Thunder Bay and E. Canada corridors offset by higher traffic in the USA/MEX and Prince Rupert corridors.
- CN volumes decreased 7% (-261) overnight, with lower traffic in the Vancouver, Thunder Bay and E. Canada corridors offset by higher volumes in the Prince Rupert and USA/MEX corridors. System wide CN loads on wheels currently at 3,574 and 5% above the trailing 30-day average.
- CP volumes decreased 7% (-198) overnight and have now decreased for the sixth consecutive day, driven by a decline in traffic across all corridors other than USA/MEX. CP system wide loads on wheels currently at 2,614, the lowest seen in the last 30 days, and 29% below the trailing 30-day average.
- Vancouver currently at 3,834, the lowest seen in the last 30 days, decreased 9% (-373) overnight, now 17% below the trailing 30-day average.
- The Prince Rupert pipeline currently at 957, the highest seen in the last 30 days, increased for the tenth consecutive day, up 7% (+63) overnight, and 93% above the trailing 30-day average.
- Thunder Bay volumes declined significantly by 36% (-361) overnight - currently at 633, the lowest seen in the last 30 days, and 52% below the trailing 30-day average, with 71% of traffic moving on CP.

Hopper Car Rationing

- No hopper cars were rationed by either CN or CP in week 2.

Loads Not Moving

- **The count of cars not moving for 48+ hours increased 6% (+53) overnight, reflecting higher counts on CN offset by reduced counts on CP. Idle car counts now at 874 and 17% below the trailing 30-day average.**
- CN
 - **The count of idle cars for 48+ hours increased 18% (+64) overnight - now at 422 cars.**
 - The number of cars idle for 4+ days decreased significantly by 68% (-152) overnight - now at 72 cars.
 - The count of cars not moving for 7+ days decreased for the third consecutive day, down 68% (-45) overnight - currently at 21 cars.
 - Vancouver represents 17% of all idle cars.
 - In total 2% of all idle cars are dwelling at origin locations.
- CP
 - **CP idle car counts for 48+ hours decreased for the third consecutive day, down 2% (-11) overnight - presently at 452 cars.**

- The number of cars idle for 4+ days increased 14% (+34) overnight - now at 280 cars.
- The number of cars idle for 7+ days declined significantly by 60% (-34) overnight and have now decreased for the fifth consecutive day - currently at 23 cars, the lowest seen in the last 30 days.
- Vancouver accounts for 77% of all idle cars.
- In total 53% of all idle cars are dwelling at origin locations.

Port Performance

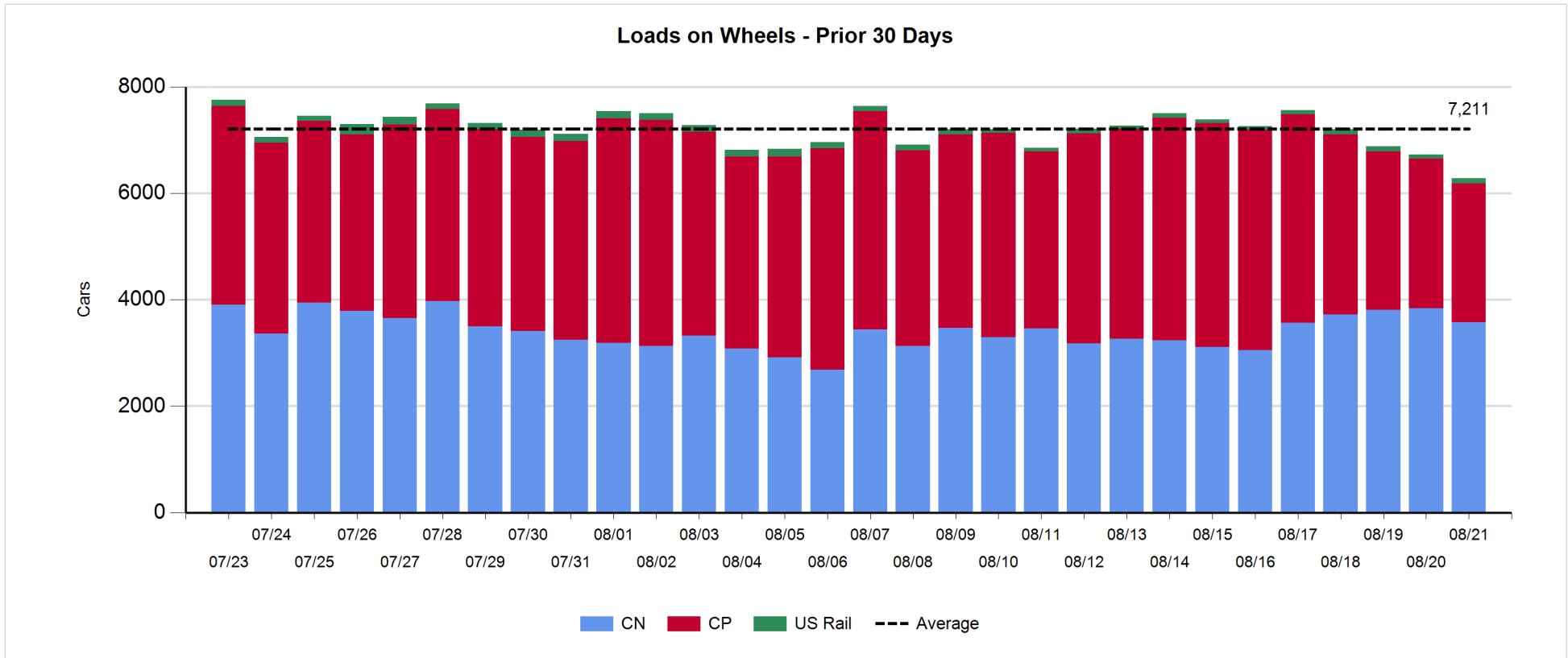
- CN and CP reported a total of 1,201 cars unloaded at the three major ports, now 28% above the trailing 30-day average. Three days in Week 3 unloads now ahead of last week's pace by around 750 unloads, reflecting higher unloads at Prince Rupert and Vancouver offset by reduced unloads at Thunder Bay.
- Vancouver
 - 616 unloads reported by CN and CP at the Port of Vancouver; CN - 286 and CP - 330. Three days in Week 3 unloads are tracking ahead of last week's performance by around 350 unloads.
 - There are 1,400 cars on site at Vancouver with more than 500 cars arriving at the port in the last 24 hours.
 - CN and CP have 700 cars in British Columbia en route to Vancouver, with around 600 cars at Kamloops and west, and 53% of traffic moving on CN.
- Prince Rupert
 - Prince Rupert reported 223 unloads, the highest seen in the last 30 days, now ahead of last week's unloads after three days by 400 unloads.
 - Loads on wheels now below 1,000 cars - now at 957 cars.
 - There are more than 100 cars west of Jasper en route to Prince Rupert.
 - There are less than 250 cars on site at Prince Rupert with less than 50 cars arriving at the port in the last 24 hours.
- Thunder Bay
 - 362 unloads were reported at Thunder Bay yesterday. Three days in Week 3 unloads are tracking behind last week's pace by 6 unloads.
 - There are more than 350 cars on site at Thunder Bay with 26 cars arriving at the port in the prior 24 hours.
 - There are 50 cars en route to Thunder Bay from Winnipeg and east.

Daily Loads on Wheels - 8/21/2019

	E Canada	Prince Rupert	Thunder Bay	USA/MEX	Vancouver	Total
CN	409	957	183	139	1,886	3,574
CP	22		450	215	1,927	2,614
Short Line	4				21	25
US Rail				63		63
	435	957	633	417	3,834	6,276

Change in Loads on Wheels - Prior 24 Hours

	E Canada	Prince Rupert	Thunder Bay	USA/MEX	Vancouver	Total
CN	-7	63	-78	16	-255	-261
CP	-1		-283	199	-113	-198
Short Line	-1				-5	-6
US Rail				15		15
	-9	63	-361	230	-373	-450

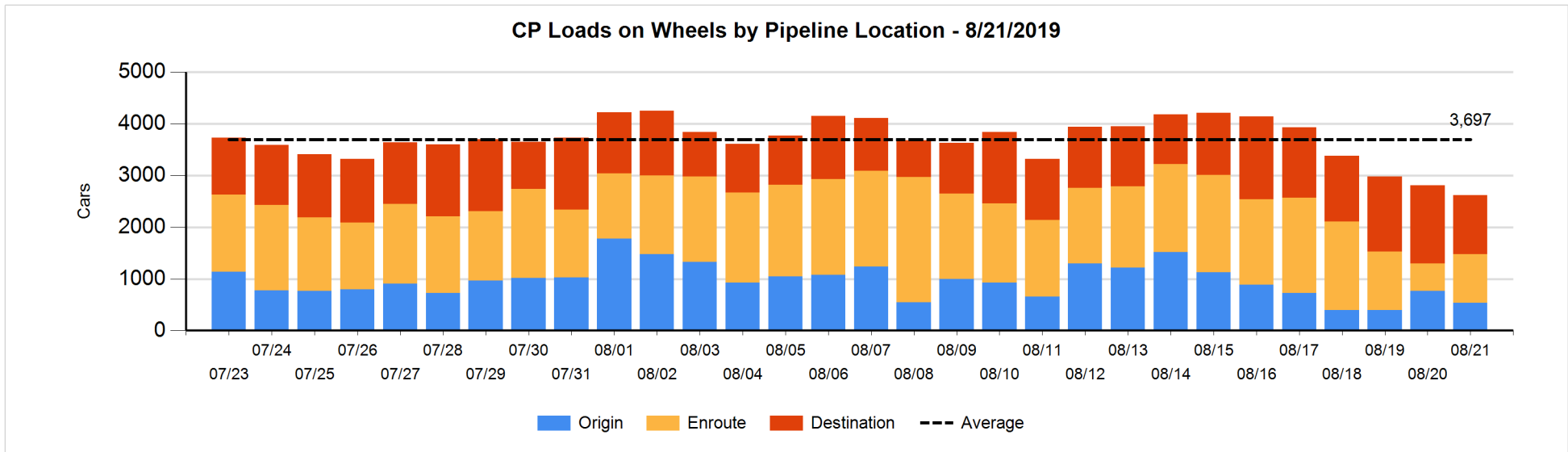
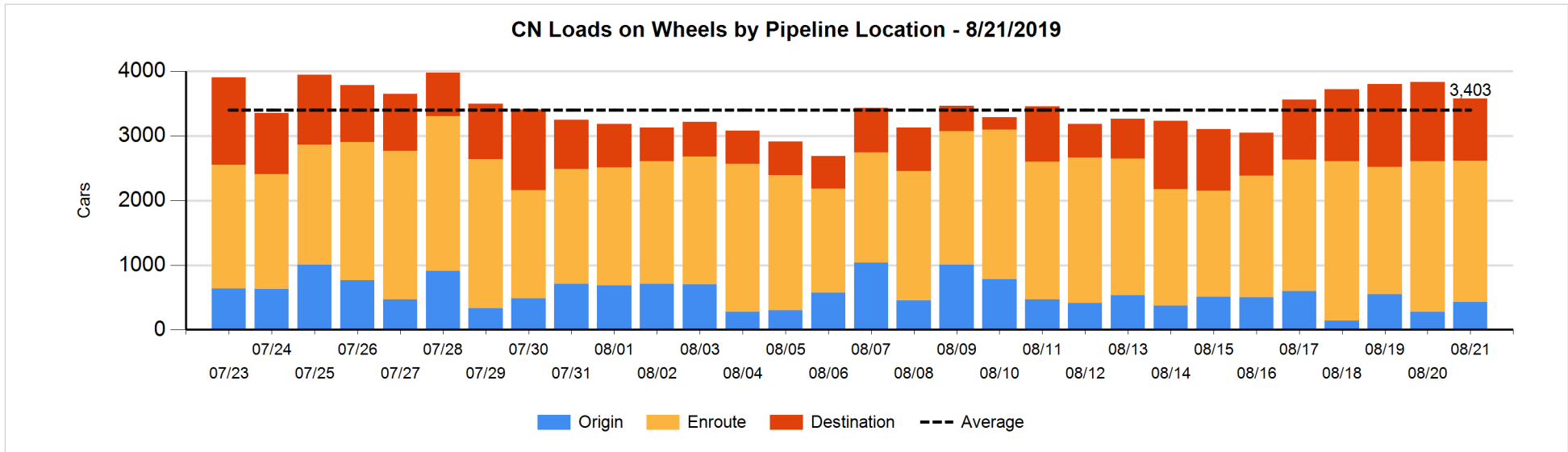


Daily Loads on Wheels By Pipeline Location - 8/21/2019

	E Canada	Prince Rupert	Thunder Bay	USA/MEX	Vancouver	Total
CN						
Origin	4	292		9	126	431
Enroute	311	427	156	121	1,166	2,181
Destination	94	238	27	9	594	962
	409	957	183	139	1,886	3,574
CP						
Origin	4		1	100	429	534
Enroute	9		113	115	704	941
Destination	9		336		794	1,139
	22		450	215	1,927	2,614
US Rail / Short Line						
Origin						
Enroute				55		55
Destination	4			8	21	33
	4			63	21	88

Change in Daily Loads on Wheels By Pipeline Location - Prior 24 Hours

	E Canada	Prince Rupert	Thunder Bay	USA/MEX	Vancouver	Total
CN						
Origin	-29	79		7	99	156
Enroute	26	188	0	7	-372	-151
Destination	-4	-204	-78	2	18	-266
	-7	63	-78	16	-255	-261
CP						
Origin	-4		-137	100	-188	-229
Enroute	3		112	99	189	403
Destination	0		-258		-114	-372
	-1		-283	199	-113	-198
US Rail / Short Line						
Origin						
Enroute				17		17
Destination	-1			-2	-5	-8
	-1			15	-5	9

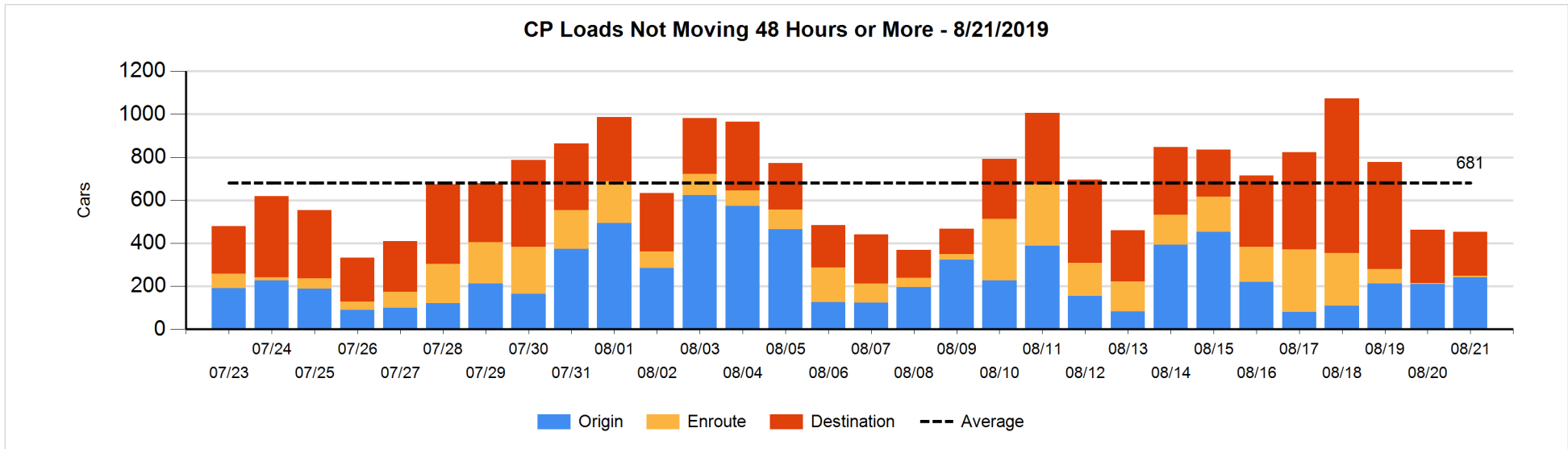
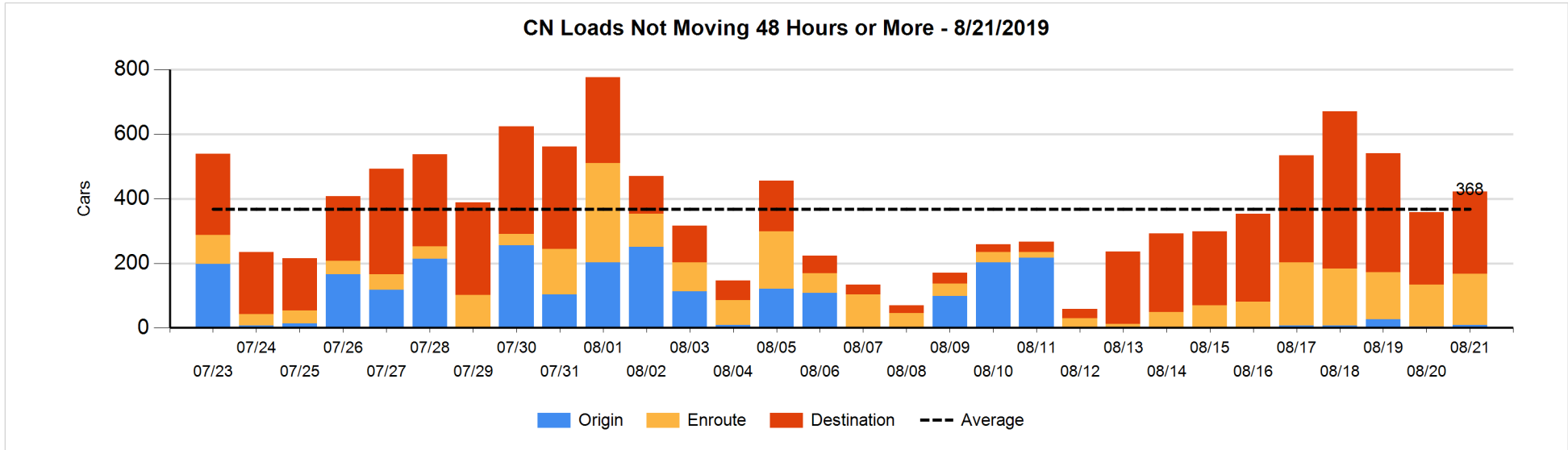


Loads Not Moving 48 Hours or More - 8/21/2019

	E Canada	Prince Rupert	Thunder Bay	USA/MEX	Vancouver	Total
CN						
Origin	4				4	8
Enroute	131	10	1	2	15	159
Destination	21	180	3		51	255
	156	190	4	2	70	422
CP						
Origin	2		1		238	241
Enroute			1	2	4	7
Destination	9		88		107	204
	11		90	2	349	452
US Rail / Short Line						
Origin						
Enroute				9		9
Destination	4			4	19	27
	4			13	19	36

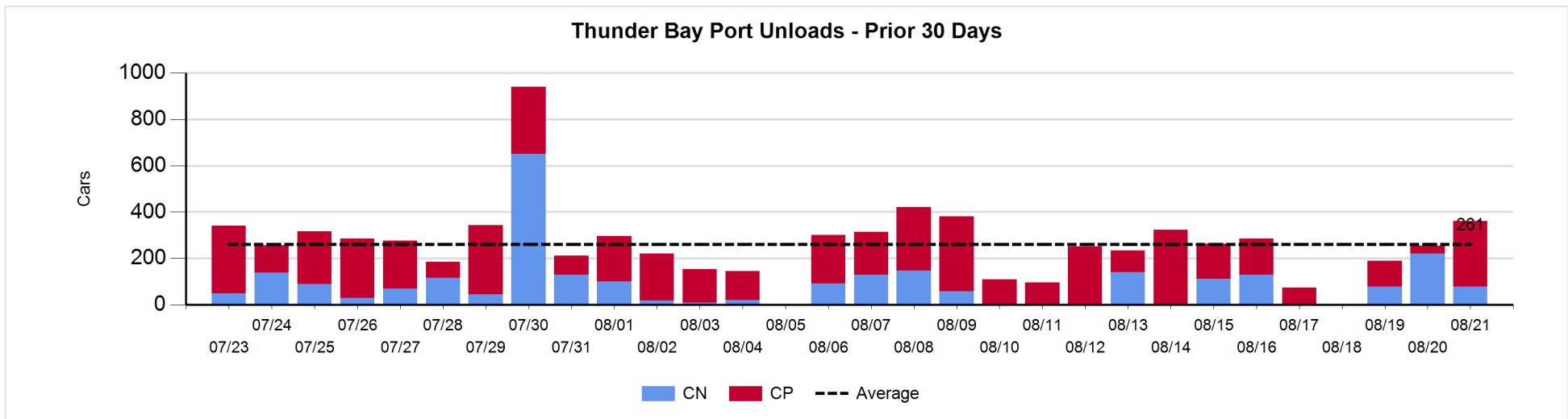
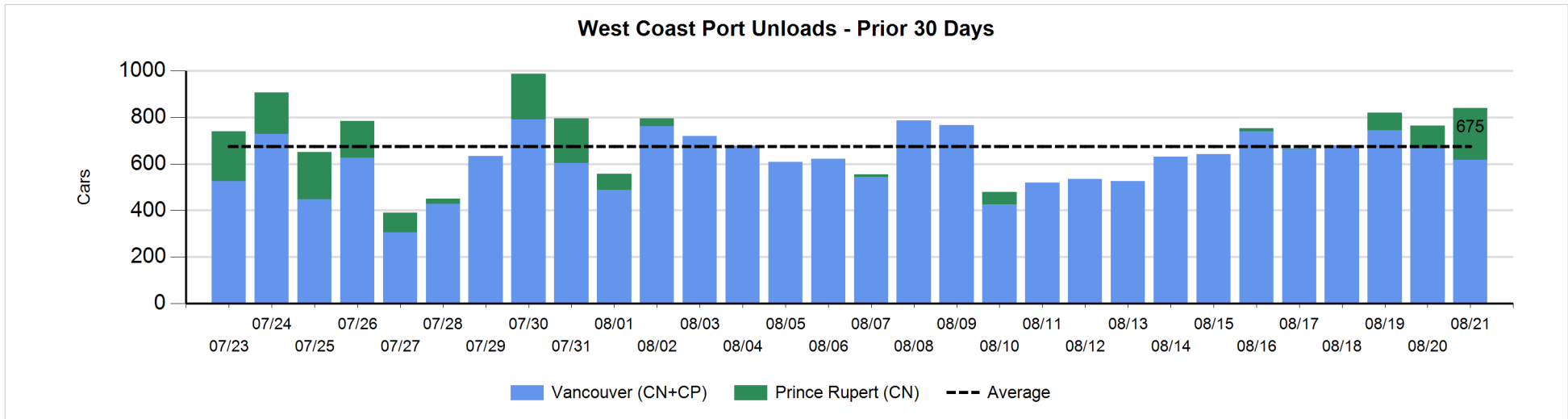
Change in Loads Not Moving 48 Hours or More - 8/21/2019

	E Canada	Prince Rupert	Thunder Bay	USA/MEX	Vancouver	Total
CN						
Origin	4	-1			1	4
Enroute	124	7	0	0	-102	29
Destination	11	1	0		19	31
	139	7	0	0	-82	64
CP						
Origin	-4		-26		62	32
Enroute	-1		0	0	1	0
Destination	1		39		-83	-43
	-4		13	0	-20	-11
US Rail / Short Line						
Origin						
Enroute				-1		-1
Destination	0			1	17	18
	0			0	17	17



Port Unloads - 8/21/2019

	Prince Rupert	Vancouver	West Coast Total	Thunder Bay	Total
CN	223	286	509	78	587
CP		330	330	284	614
	223	616	839	362	1,201



Port Terminal Status

Vancouver

Daily Activity for 8/21/2019

	Cars Arrived	Cars Received in Interchange	Cars Delivered in Interchange	Cars Placed for Unloading	Loads on Wheels at Destination As of 8/21/2019
CN	370	143		323	594
CP	142	11	147	445	794
SRY		4	11	4	21

Port Unloads

	08/21	08/20	Week To Date	Last Week
CN	286	246	856	1,678
CP	330	419	1,168	2,740
SRY	3	9	24	25

Age Profile of Loaded Cars Waiting Placement for Unloading

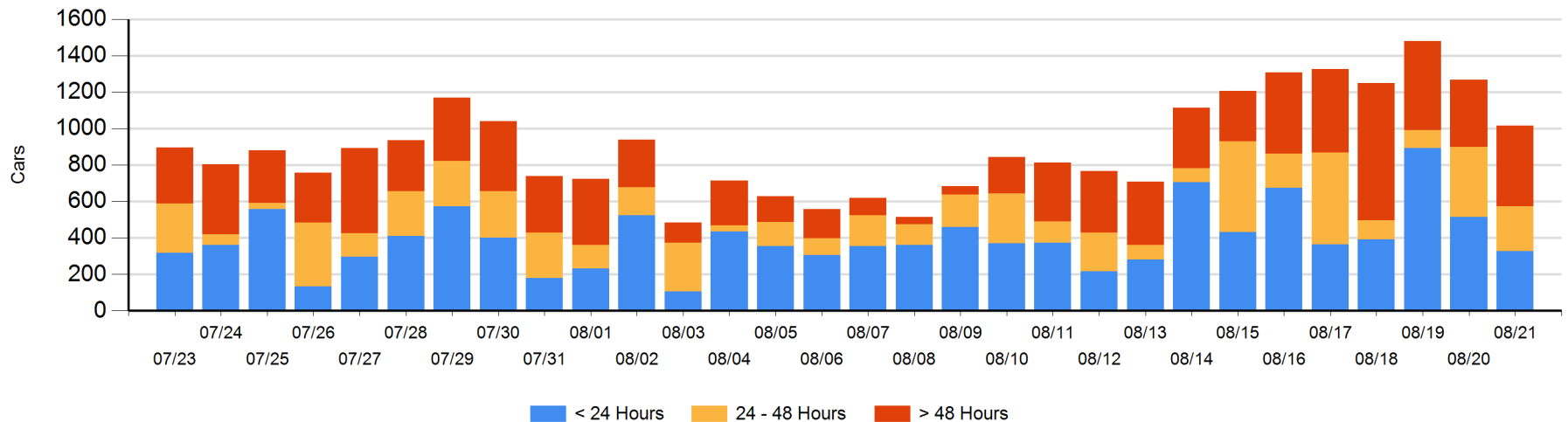
Today

	< 24 Hrs	24 - 48 Hrs	> 48-72 Hrs	> 72 Hrs	Total On Hand
CN	255	9	21	52	337
CP	71	237	211	160	679
SRY					0

Change in Last 24 Hours

	< 24 Hrs	24-48 Hrs	48 - 72 Hrs	> 72 Hrs
CN	144	-18	21	-36
CP	-332	-120	182	-93
SRY				

Loaded Cars on Hand Vancouver Waiting for Placement - Last 30 Days All Railways



Port Terminal Status

Prince Rupert

Daily Activity for 8/21/2019

	Cars Arrived	Cars Received in Interchange	Cars Delivered in Interchange	Cars Placed for Unloading	Loads on Wheels at Destination As of 8/21/2019
CN	38			38	238

Port Unloads

	08/21	08/20	Week To Date	Last Week
CN	223	99	399	13

Age Profile of Loaded Cars Waiting Placement for Unloading

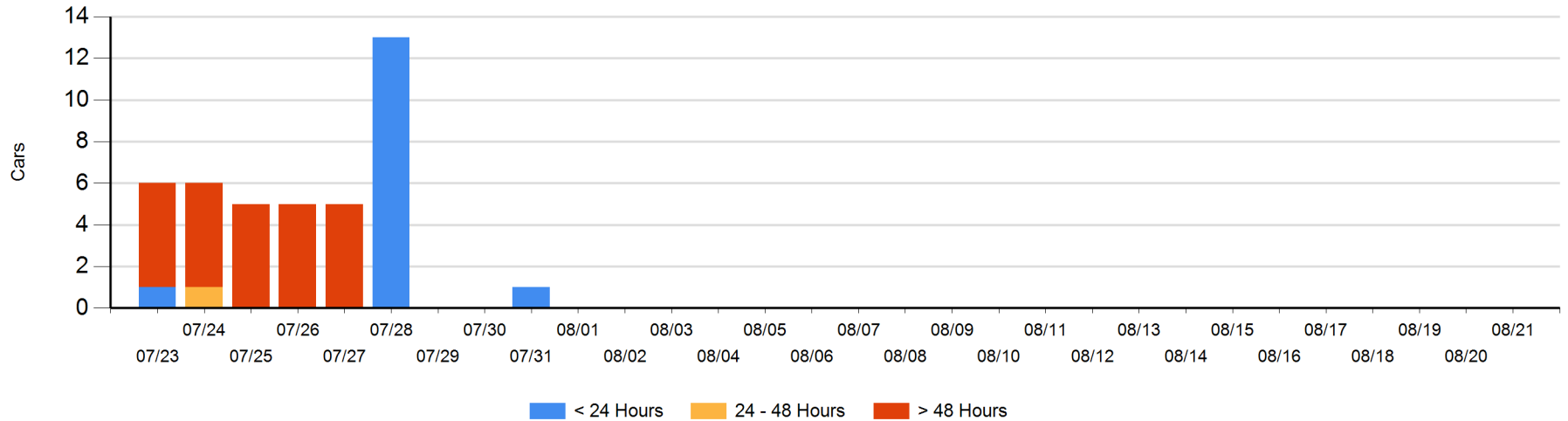
Today

	< 24 Hrs	24 - 48 Hrs	> 48-72 Hrs	> 72 Hrs	Total On Hand
CN					0

Change in Last 24 Hours

	< 24 Hrs	24-48 Hrs	48 - 72 Hrs	> 72 Hrs
CN				

Loaded Cars on Hand Prince Rupert Waiting for Placement - Last 30 Days All Railways



Port Terminal Status

Thunder Bay

Daily Activity for 8/21/2019

	Cars Arrived	Cars Received in Interchange	Cars Delivered in Interchange	Cars Placed for Unloading	Loads on Wheels at Destination As of 8/21/2019
CN				102	27
CP	26			350	336

Port Unloads

	08/21	08/20	Week To Date	Last Week
CN	78	221	377	383
CP	284	33	428	1,050

Age Profile of Loaded Cars Waiting Placement for Unloading

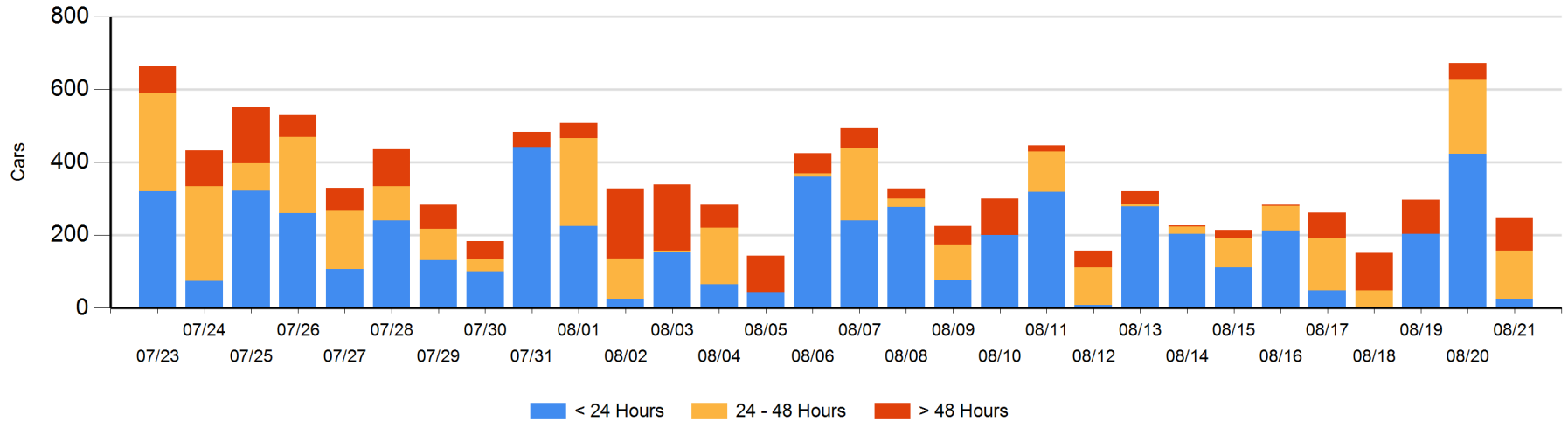
Today

	< 24 Hrs	24 - 48 Hrs	> 48-72 Hrs	> 72 Hrs	Total On Hand
CN					0
CP	26	131	82	8	247

Change in Last 24 Hours

	< 24 Hrs	24-48 Hrs	48 - 72 Hrs	> 72 Hrs
CN	-102			
CP	-296	-72	82	-38

Loaded Cars on Hand Thunder Bay Waiting for Placement - Last 30 Days All Railways



Measurement Definitions

Loads on Wheels	<p>Count of loaded rail cars including all rail cars that have been released loaded at origin and have not been reported by the railway as unloaded at destination.</p> <p>Counts include all rail cars (hopper cars and boxcars) moving within a pipeline.</p>
Loads Not Moving	<p>Loaded rail cars for which the railways have not reported a movement event for 48 hours or more whether the rail car is at origin, enroute or at destination.</p>
Port Unloads	<p>Count of rail cars reported by railways as unloaded at the western port destinations of Vancouver, Prince Rupert and Thunder Bay.</p> <p>Unload counts include all rail cars (hopper cars and boxcars) unloaded by all receivers including major port terminals, transloaders and other receivers.</p>
Cars Arrived	<p>Count of rail cars reported as arrived at the destination railway terminal.</p>
Cars Received in Interchange	<p>Count of rail cars received in interchange by each railway within a destination railway terminal. Interchange activity is tracked for the Vancouver and Thunder Bay pipelines as applicable.</p>
Cars Delivered in Interchange	<p>Count of rail cars delivered in interchange by each railway within a destination railway terminal. Interchange activity is tracked for the Vancouver and Thunder Bay pipelines as applicable.</p>
Cars Placed for Unloading	<p>Count of rail cars reported by the railways as placed loaded at the receiver's facility for unloading.</p>
Loads on Wheels at Destination	<p>Count of rail cars that remain under load within the destination railway terminal including rail cars that have been reported as placed for unloading but not yet reported as unloaded.</p>
Waiting Placement for Unloading	<p>Count of rail cars that have been reported as arrived at the destination railway terminal but not reported as placed for unloading by the railway.</p> <p>For the Ports of Vancouver, Prince Rupert and Thunder Bay the count of rail cars waiting placement for unloading is categorized by age – i.e. the elapsed time from arrival at destination to the current report date.</p>