

SPEED READ

- Loads on wheels gained overnight, reflecting an increase in both CN and CP volumes. On a net basis, volumes increased due to higher volumes in the Vancouver, Thunder Bay and USA/MEX corridors offset by reduced volumes in the Prince Rupert and E. Canada corridors.
- Network fluidity improved overnight, led by a decline in idle car counts on both CN and CP by 54% (-229) and 20% (-87), respectively. The total count of cars for 4+ days on both railways declined 38% (-133) overnight and have now decreased for the fourth consecutive day - now at 220 cars.
- Four days in Week 3 unloads now ahead of prior week's performance by more than 1,000 unloads, reflecting improved week over week performance across all three major ports - Vancouver, Thunder Bay and Prince Rupert.

Loads on Wheels

- Loads on wheels gained 7% (+414) overnight, due to higher traffic on both CN and CP - combined total at 6,692 and 7% below the trailing 30-day average.
- On a net basis, the increase in loads on wheels indicates higher volumes in the Vancouver, Thunder Bay and USA/MEX corridors offset by reduced volumes in the Prince Rupert and E. Canada corridors.
- CN volumes gained slightly by 1% (+47) overnight, with higher volumes in the Vancouver, Thunder Bay and USA/MEX corridors offset by reduced traffic in the Prince Rupert and E. Canada corridors. System wide CN loads on wheels currently at 3,621 and 7% above the trailing 30-day average.
- CP volumes gained significantly by 15% (+381) overnight, driven by an increase in traffic across all corridors other than Thunder Bay. CP system wide loads on wheels presently at 2,997 and 18% below the trailing 30-day average.
- Vancouver presently at 4,301, gained significantly by 12% (+466) overnight, now 6% below the trailing 30-day average.
- The Prince Rupert pipeline presently at 875, declined 9% (-82) overnight, and 77% above the trailing 30-day average.
- Thunder Bay volumes increased 8% (+52) overnight - now at 686 and 46% below the trailing 30-day average, with 63% of traffic moving on CP.

Hopper Car Rationing

- No hopper cars were rationed by either CN or CP in week 2.

Loads Not Moving

- **The count of cars not moving for 48+ hours decreased 36% (-316) overnight, reflecting reduced counts on both CN and CP. Idle car counts presently at 551 and 47% below the trailing 30-day average.**
- CN
 - **The count of idle cars for 48+ hours declined significantly by 54% (-229) overnight - currently at 193 cars.**
 - The number of cars idle for 4+ days declined 19% (-14) overnight and have now decreased for the third consecutive day - presently at 58 cars.
 - The count of cars not moving for 7+ days declined 29% (-6) overnight and have now decreased for the fourth consecutive day - now at 15 cars.
 - Vancouver represents 41% of all idle cars.
 - In total 3% of all idle cars are dwelling at origin locations.
- CP
 - **CP idle car counts for 48+ hours decreased 20% (-87) overnight and have now decreased for the fourth consecutive day - now at 358 cars.**
 - The number of cars idle for 4+ days declined 42% (-119) overnight - presently at 162 cars.
 - The number of cars idle for 7+ days declined 4% (-1) overnight and have now decreased for the sixth consecutive day - now at 23 cars, the lowest seen in the last 30 days.

- Vancouver accounts for 91% of all idle cars.
- In total 29% of all idle cars are dwelling at origin locations.

Port Performance

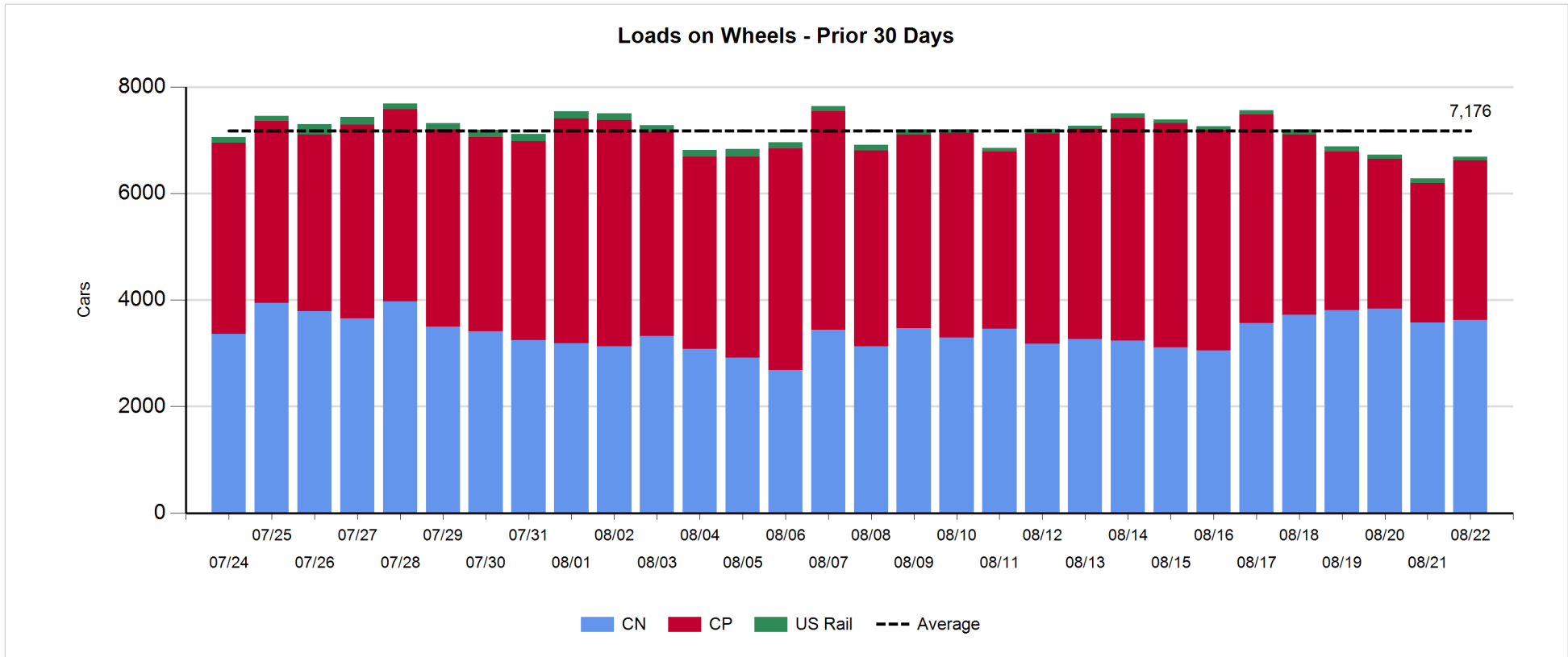
- CN and CP reported a total of 1,247 cars unloaded at the three major ports, now 32% above the trailing 30-day average. Four days in Week 3 unloads now ahead of last week's pace by more than 1,000 unloads, reflecting higher unloads across all three major ports - Vancouver, Thunder Bay and Prince Rupert.
- Vancouver
 - 751 unloads reported by CN and CP at the Port of Vancouver; CN - 313 and CP - 438. Four days in Week 3 unloads are tracking ahead of last week's performance by more than 450 unloads.
 - There are 1,200 cars on site at Vancouver with more than 550 cars arriving at the port in the last 24 hours.
 - CN and CP have more than 700 cars in British Columbia en route to Vancouver, with 300 cars at Kamloops and west, and 99% of traffic moving on CN.
- Prince Rupert
 - Prince Rupert reported 208 unloads, now ahead of last week's unloads after four days by 600 unloads.
 - Loads on wheels now below 1,000 cars - now at 875 cars.
 - There are fewer than 150 cars west of Jasper en route to Prince Rupert.
 - There are fewer than 50 cars on site at Prince Rupert with 24 cars arriving at the port in the last 24 hours.
- Thunder Bay
 - 288 unloads were reported at Thunder Bay yesterday. Four days in Week 3 unloads are tracking ahead of last week's pace by 19 unloads.
 - There are more than 150 cars on site at Thunder Bay with more than 100 cars arriving at the port in the prior 24 hours.
 - There are 100 cars en route to Thunder Bay from Winnipeg and east.

Daily Loads on Wheels - 8/22/2019

	E Canada	Prince Rupert	Thunder Bay	USA/MEX	Vancouver	Total
CN	379	875	255	151	1,961	3,621
CP	24		431	225	2,317	2,997
Short Line	4				23	27
US Rail				47		47
	407	875	686	423	4,301	6,692

Change in Loads on Wheels - Prior 24 Hours

	E Canada	Prince Rupert	Thunder Bay	USA/MEX	Vancouver	Total
CN	-30	-82	72	12	75	47
CP	2		-20	10	389	381
Short Line	0				2	2
US Rail				-16		-16
	-28	-82	52	6	466	414

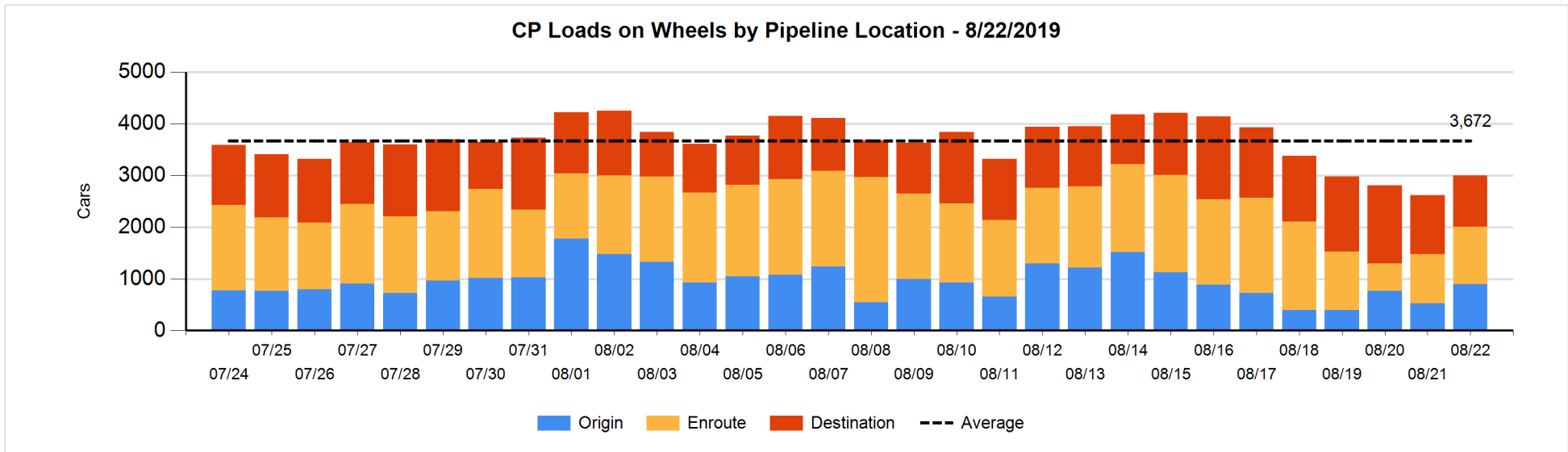
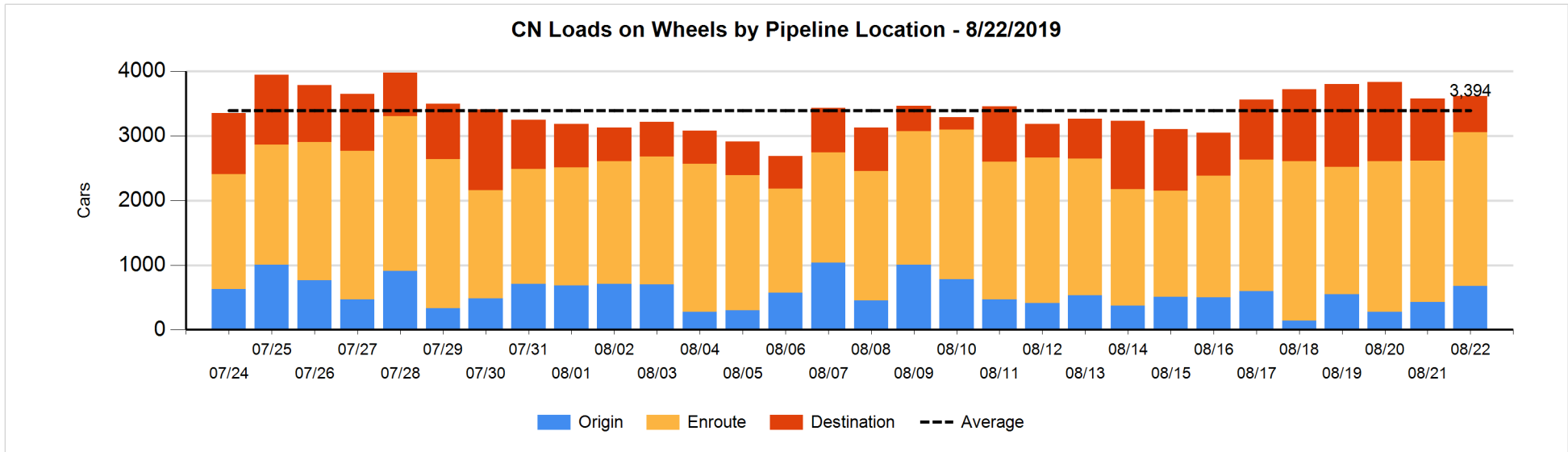


Daily Loads on Wheels By Pipeline Location - 8/22/2019

	E Canada	Prince Rupert	Thunder Bay	USA/MEX	Vancouver	Total
CN						
Origin	1	161		7	504	673
Enroute	256	680	252	132	1,061	2,381
Destination	122	34	3	12	396	567
	379	875	255	151	1,961	3,621
CP						
Origin	6		254	3	633	896
Enroute	9		2	203	894	1,108
Destination	9		175	19	790	993
	24		431	225	2,317	2,997
US Rail / Short Line						
Origin						
Enroute				27		27
Destination	4			20	23	47
	4			47	23	74

Change in Daily Loads on Wheels By Pipeline Location - Prior 24 Hours

	E Canada	Prince Rupert	Thunder Bay	USA/MEX	Vancouver	Total
CN						
Origin	-3	-131		-2	378	242
Enroute	-55	253	96	11	-105	200
Destination	28	-204	-24	3	-198	-395
	-30	-82	72	12	75	47
CP						
Origin	2		253	-97	214	372
Enroute	0		-112	88	179	155
Destination	0		-161	19	-4	-146
	2		-20	10	389	381
US Rail / Short Line						
Origin						
Enroute				-28		-28
Destination	0			12	2	14
	0			-16	2	-14

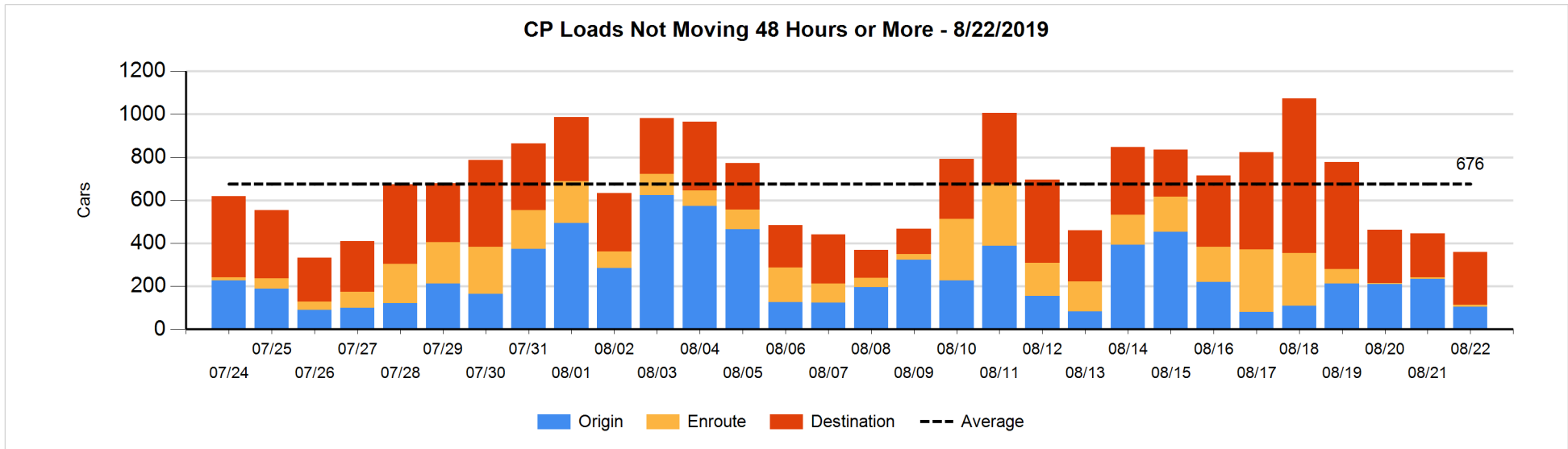
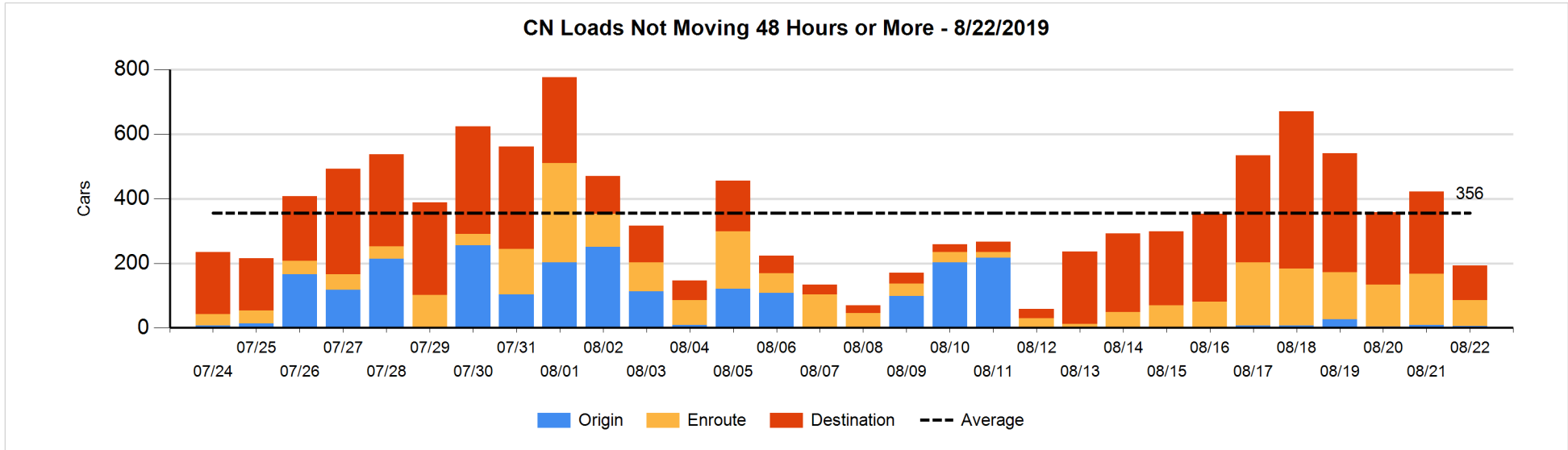


Loads Not Moving 48 Hours or More - 8/22/2019

	E Canada	Prince Rupert	Thunder Bay	USA/MEX	Vancouver	Total
CN						
Origin				2	3	5
Enroute	45	3		7	26	81
Destination	19	34	3	1	50	107
	64	37	3	10	79	193
CP						
Origin	4		1		99	104
Enroute			2	2	5	9
Destination	9		13		223	245
	13		16	2	327	358
US Rail / Short Line						
Origin						
Enroute				7		7
Destination	4			4	13	21
	4			11	13	28

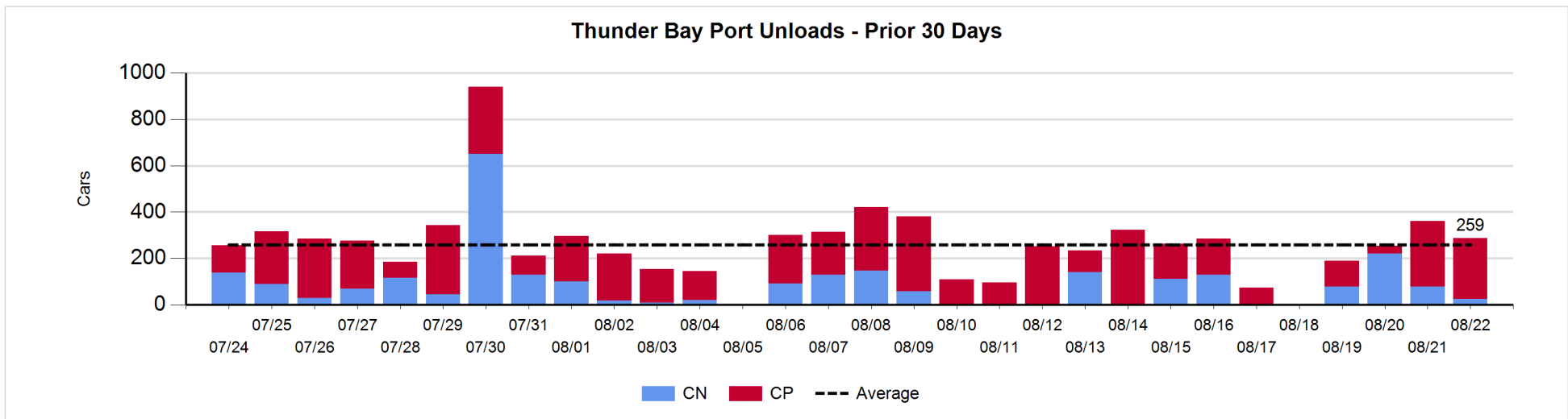
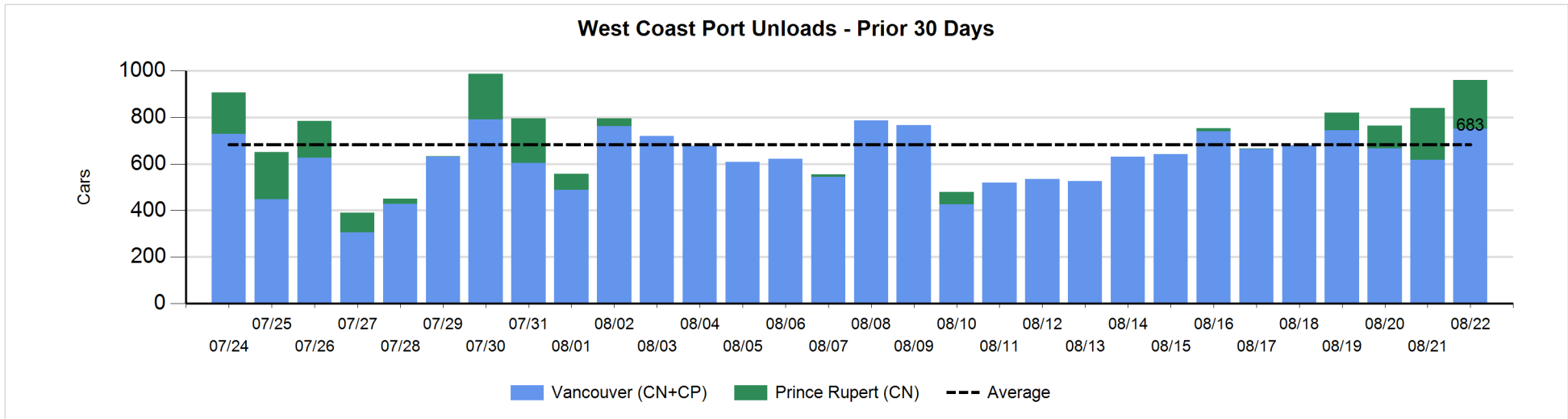
Change in Loads Not Moving 48 Hours or More - 8/22/2019

	E Canada	Prince Rupert	Thunder Bay	USA/MEX	Vancouver	Total
CN						
Origin	-4			2	-1	-3
Enroute	-86	-7	-1	5	11	-78
Destination	-2	-146	0	1	-1	-148
	-92	-153	-1	8	9	-229
CP						
Origin	2		0		-131	-129
Enroute			0	0	1	1
Destination	0		-75		116	41
	2		-75	0	-14	-87
US Rail / Short Line						
Origin						
Enroute				-2		-2
Destination	0			0	-6	-6
	0			-2	-6	-8



Port Unloads - 8/22/2019

	Prince Rupert	Vancouver	West Coast Total	Thunder Bay	Total
CN	208	313	521	24	545
CP		438	438	264	702
	208	751	959	288	1,247



Port Terminal Status

Vancouver

Daily Activity for 8/22/2019

	Cars Arrived	Cars Received in Interchange	Cars Delivered in Interchange	Cars Placed for Unloading	Loads on Wheels at Destination As of 8/22/2019
CN	117	3	129	285	396
CP	450	120	3	388	790
SRY		9		15	23

Port Unloads

	08/22	08/21	Week To Date	Last Week
CN	313	286	1,169	1,678
CP	438	330	1,606	2,740
SRY	16	3	40	25

Age Profile of Loaded Cars Waiting Placement for Unloading

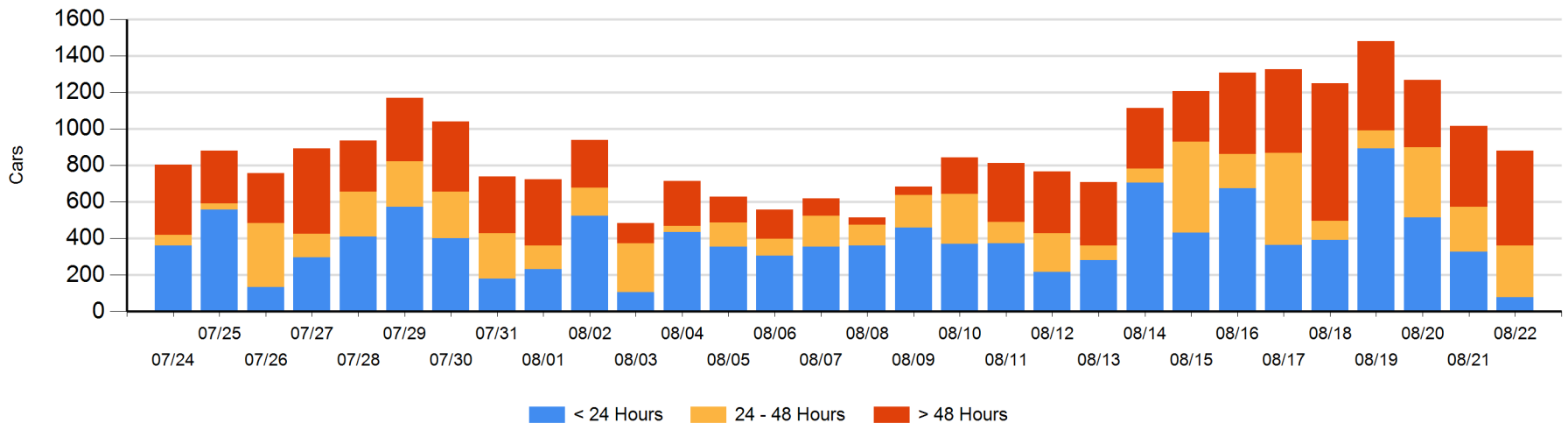
Today

	< 24 Hrs	24 - 48 Hrs	> 48-72 Hrs	> 72 Hrs	Total On Hand
CN	2	104	3	58	167
CP	75	181	211	248	715
SRY					0

Change in Last 24 Hours

	< 24 Hrs	24-48 Hrs	48 - 72 Hrs	> 72 Hrs
CN	-253	95	-18	6
CP	4	-56	0	88
SRY				

Loaded Cars on Hand Vancouver Waiting for Placement - Last 30 Days All Railways



Port Terminal Status

Prince Rupert

Daily Activity for 8/22/2019

	Cars Arrived	Cars Received in Interchange	Cars Delivered in Interchange	Cars Placed for Unloading	Loads on Wheels at Destination As of 8/22/2019
CN	24			24	34

Port Unloads

	08/22	08/21	Week To Date	Last Week
CN	208	223	607	13

Age Profile of Loaded Cars Waiting Placement for Unloading

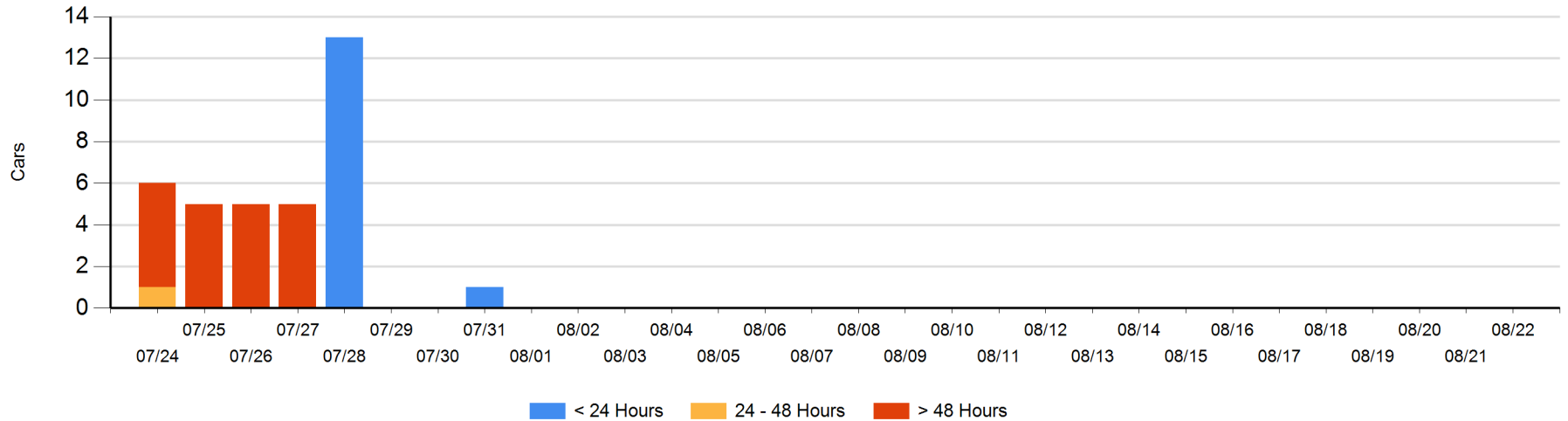
Today

	< 24 Hrs	24 - 48 Hrs	> 48-72 Hrs	> 72 Hrs	Total On Hand
CN					0

Change in Last 24 Hours

	< 24 Hrs	24-48 Hrs	48 - 72 Hrs	> 72 Hrs
CN				

Loaded Cars on Hand Prince Rupert Waiting for Placement - Last 30 Days All Railways



Port Terminal Status

Thunder Bay

Daily Activity for 8/22/2019

	Cars Arrived	Cars Received in Interchange	Cars Delivered in Interchange	Cars Placed for Unloading	Loads on Wheels at Destination As of 8/22/2019
CN					3
CP	113			231	175

Port Unloads

	08/22	08/21	Week To Date	Last Week
CN	24	78	401	383
CP	264	284	692	1,050

Age Profile of Loaded Cars Waiting Placement for Unloading

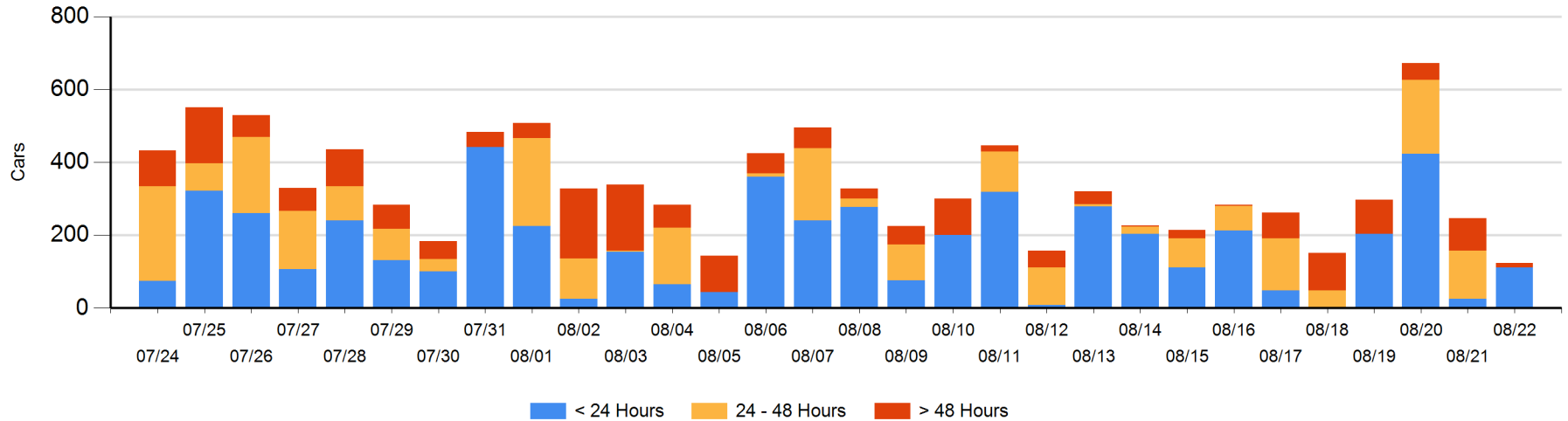
Today

	< 24 Hrs	24 - 48 Hrs	> 48-72 Hrs	> 72 Hrs	Total On Hand
CN					0
CP	112		8	4	124

Change in Last 24 Hours

	< 24 Hrs	24-48 Hrs	48 - 72 Hrs	> 72 Hrs
CN				
CP	86	-131	-74	-4

Loaded Cars on Hand Thunder Bay Waiting for Placement - Last 30 Days All Railways



Measurement Definitions

Loads on Wheels	<p>Count of loaded rail cars including all rail cars that have been released loaded at origin and have not been reported by the railway as unloaded at destination.</p> <p>Counts include all rail cars (hopper cars and boxcars) moving within a pipeline.</p>
Loads Not Moving	<p>Loaded rail cars for which the railways have not reported a movement event for 48 hours or more whether the rail car is at origin, enroute or at destination.</p>
Port Unloads	<p>Count of rail cars reported by railways as unloaded at the western port destinations of Vancouver, Prince Rupert and Thunder Bay.</p> <p>Unload counts include all rail cars (hopper cars and boxcars) unloaded by all receivers including major port terminals, transloaders and other receivers.</p>
Cars Arrived	<p>Count of rail cars reported as arrived at the destination railway terminal.</p>
Cars Received in Interchange	<p>Count of rail cars received in interchange by each railway within a destination railway terminal. Interchange activity is tracked for the Vancouver and Thunder Bay pipelines as applicable.</p>
Cars Delivered in Interchange	<p>Count of rail cars delivered in interchange by each railway within a destination railway terminal. Interchange activity is tracked for the Vancouver and Thunder Bay pipelines as applicable.</p>
Cars Placed for Unloading	<p>Count of rail cars reported by the railways as placed loaded at the receiver's facility for unloading.</p>
Loads on Wheels at Destination	<p>Count of rail cars that remain under load within the destination railway terminal including rail cars that have been reported as placed for unloading but not yet reported as unloaded.</p>
Waiting Placement for Unloading	<p>Count of rail cars that have been reported as arrived at the destination railway terminal but not reported as placed for unloading by the railway.</p> <p>For the Ports of Vancouver, Prince Rupert and Thunder Bay the count of rail cars waiting placement for unloading is categorized by age – i.e. the elapsed time from arrival at destination to the current report date.</p>