

SPEED READ

- Loads on wheels fell marginally overnight, reflecting a decline in CN traffic offset by higher CP volumes. On a net basis, volumes decreased due to lower traffic across all corridors other than Thunder Bay.
- Network fluidity deteriorated overnight, led by an increase in idle car counts on CN by 15% (+41) offset by a decline in idle car counts on CP by 2% (-13). The total count of cars for 4+ days on both railways increased 8% (+15) overnight - presently at 197 cars.
- Week 3 unloads finished ahead of prior week's performance by more than 850 unloads, reflecting improved week over week performance at Prince Rupert and Vancouver offset by lower unloads at Thunder Bay.

=====

Loads on Wheels

- Loads on wheels fell marginally by 1% (-55) overnight, due to reduced volumes on CN offset by higher traffic on CP - combined total at 7,117 and in line with the trailing 30-day average.
- On a net basis, the decline in loads on wheels indicates lower traffic across all corridors other than Thunder Bay.
- CN volumes decreased for the third consecutive day, down 9% (-298) overnight, with lower traffic across all corridors other than Thunder Bay. System wide CN loads on wheels now at 3,014 and 10% below the trailing 30-day average.
- CP volumes increased for the fourth consecutive day, up 6% (+235) overnight, driven by an increase in traffic in the Thunder Bay corridor offset by a decline in volumes in all other corridors. CP system wide loads on wheels presently at 3,989 and 8% above the trailing 30-day average.
- Vancouver now at 3,995, decreased 4% (-149) overnight, now 13% below the trailing 30-day average.
- The Prince Rupert pipeline now at 790, fell significantly by 23% (-238) overnight, and 53% above the trailing 30-day average.
- Thunder Bay volumes rose significantly by 28% (+339) overnight and have now increased for the fourth consecutive day - presently at 1,555 and 25% above the trailing 30-day average, with 59% of traffic moving on CP.

Hopper Car Rationing

- No hopper cars were rationed by either CN or CP in week 2.

Loads Not Moving

- **The count of cars not moving for 48+ hours rose 3% (+28) overnight, marking higher counts on CN offset by lower counts on CP. Idle car counts currently at 829 and 19% below the trailing 30-day average.**
- CN
 - **The count of idle cars for 48+ hours increased 15% (+41) overnight - now at 311 cars.**
 - The number of cars idle for 4+ days gained for the third consecutive day, up 107% (+73) overnight - presently at 141 cars.
 - The count of cars not moving for 7+ days decreased 28% (-5) overnight - presently at 13 cars.
 - Vancouver represents 30% of all idle cars.
 - In total 41% of all idle cars are dwelling at origin locations.
- CP
 - **CP idle car counts for 48+ hours fell 2% (-13) overnight - currently at 518 cars.**
 - The number of cars idle for 4+ days decreased significantly by 51% (-58) overnight - currently at 56 cars, the lowest seen in the last 30 days.
 - The number of cars idle for 7+ days decreased 31% (-5) overnight - currently at 11 cars, the lowest seen in the last 30 days.

- Vancouver accounts for 74% of all idle cars.
- In total 31% of all idle cars are dwelling at origin locations.

Port Performance

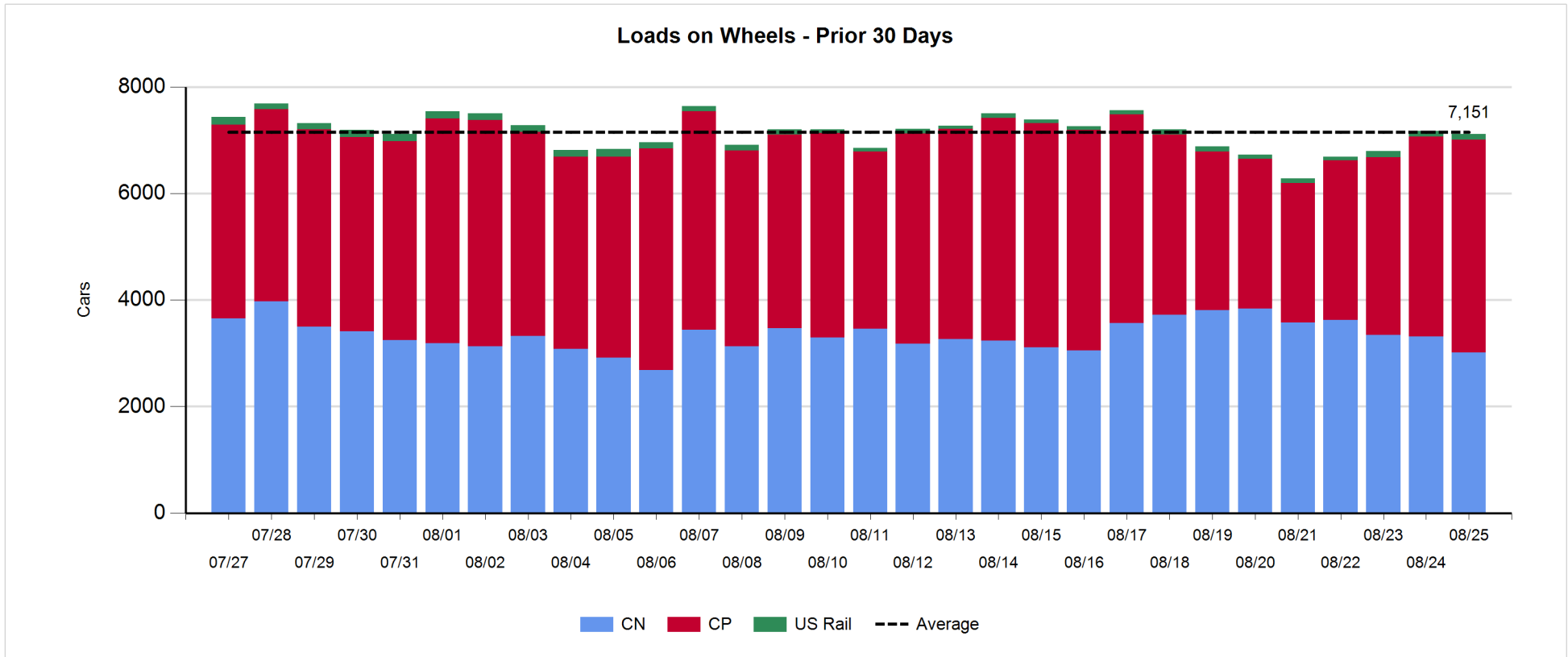
- CN and CP reported a total of 749 cars unloaded at the three major ports, now 18% below the trailing 30-day average. Week 3 unloads finished ahead of last week's pace by more than 850 unloads, reflecting higher unloads at Prince Rupert and Vancouver offset by lower unloads at Thunder Bay.
- Vancouver
 - 471 unloads reported by CN and CP at the Port of Vancouver; CN - 98 and CP - 373. Week 3 unloads ended ahead of last week's performance by around 100 unloads.
 - There are more than 950 cars on site at Vancouver with around 400 cars arriving at the port in the last 24 hours.
 - CN and CP have more than 1,100 cars in British Columbia en route to Vancouver, with fewer than 400 cars at Kamloops and west, and 73% of traffic moving on CP.
- Prince Rupert
 - Prince Rupert reported 238 unloads, the highest seen in the last 30 days, finished ahead of last week's unloads by 950 unloads.
 - Loads on wheels now below 1,000 cars - presently at 790 cars.
 - There are more than 250 cars west of Jasper en route to Prince Rupert.
 - There are 13 cars on site at Prince Rupert with 7 cars arriving at the port in the last 24 hours.
- Thunder Bay
 - 40 unloads were reported at Thunder Bay yesterday. Week 3 unloads finished behind last week's pace by 150 unloads.
 - There are more than 750 cars on site at Thunder Bay with more than 650 cars arriving at the port in the prior 24 hours.
 - There are more than 400 cars en route to Thunder Bay from Winnipeg and east.

Daily Loads on Wheels - 8/25/2019

	E Canada	Prince Rupert	Thunder Bay	USA/MEX	Vancouver	Total
CN	297	790	638	128	1,161	3,014
CP	35		917	227	2,810	3,989
Short Line	3				24	27
US Rail				87		87
	335	790	1,555	442	3,995	7,117

Change in Loads on Wheels - Prior 24 Hours

	E Canada	Prince Rupert	Thunder Bay	USA/MEX	Vancouver	Total
CN	-1	-238	68	-7	-120	-298
CP	-1		271	-1	-34	235
Short Line	0				5	5
US Rail				3		3
	-2	-238	339	-5	-149	-55

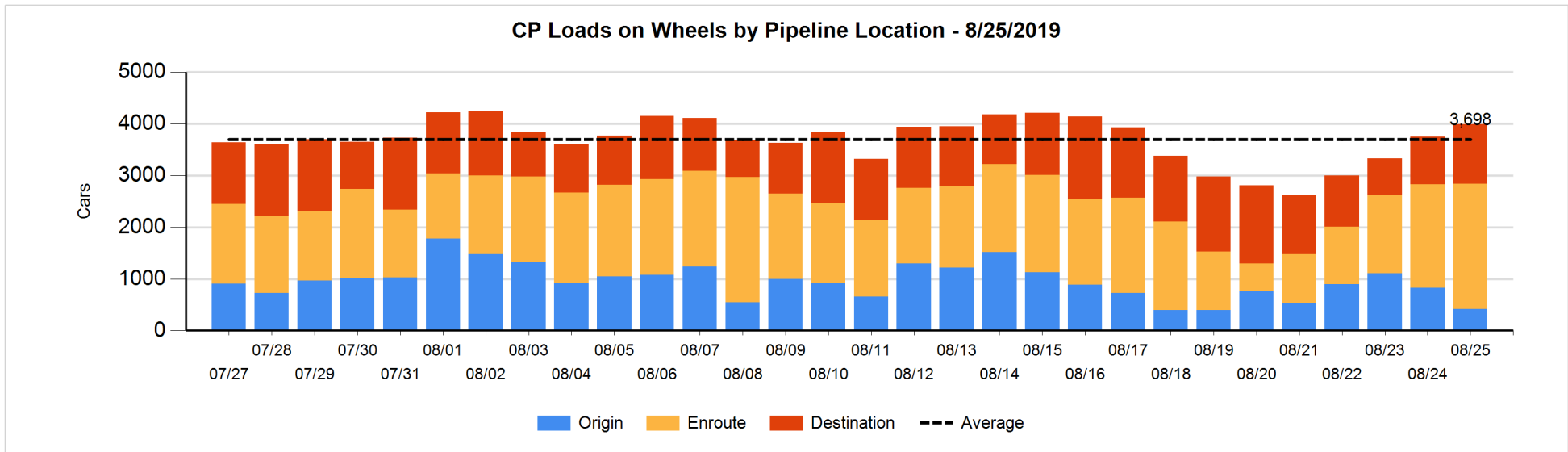
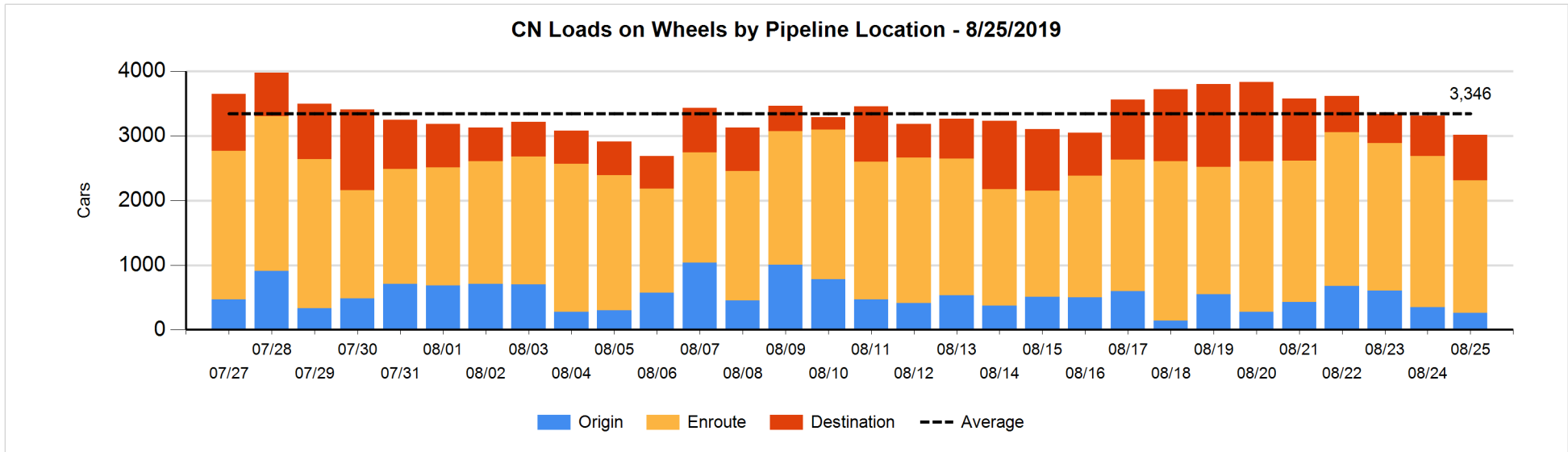


Daily Loads on Wheels By Pipeline Location - 8/25/2019

	E Canada	Prince Rupert	Thunder Bay	USA/MEX	Vancouver	Total
CN						
Origin		91	108	2	55	256
Enroute	206	686	200	121	842	2,055
Destination	91	13	330	5	264	703
	297	790	638	128	1,161	3,014
CP						
Origin	26		50	1	338	415
Enroute	8		426	202	1,787	2,423
Destination	1		441	24	685	1,151
	35		917	227	2,810	3,989
US Rail / Short Line						
Origin						
Enroute				41		41
Destination	3			46	24	73
	3			87	24	114

Change in Daily Loads on Wheels By Pipeline Location - Prior 24 Hours

	E Canada	Prince Rupert	Thunder Bay	USA/MEX	Vancouver	Total
CN						
Origin	-5	-70	108	-8	-119	-94
Enroute	7	64	-316	0	-37	-282
Destination	-3	-232	276	1	36	78
	-1	-238	68	-7	-120	-298
CP						
Origin	-3		-41	-50	-318	-412
Enroute	2		-44	47	414	419
Destination	0		356	2	-130	228
	-1		271	-1	-34	235
US Rail / Short Line						
Origin						
Enroute				6		6
Destination	0			-3	5	2
	0			3	5	8

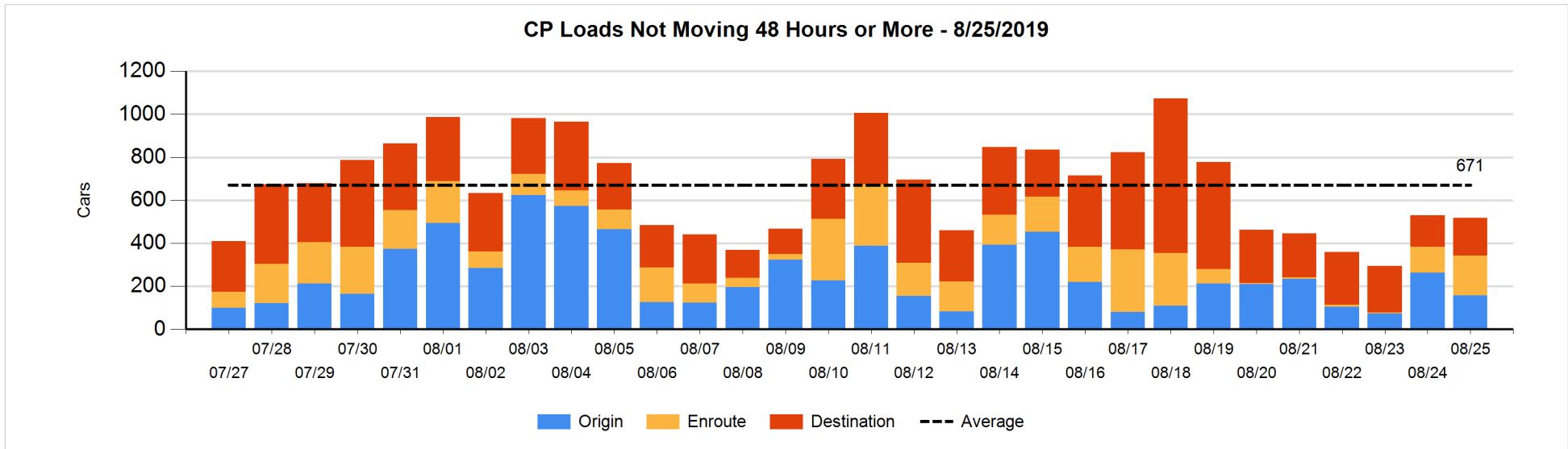
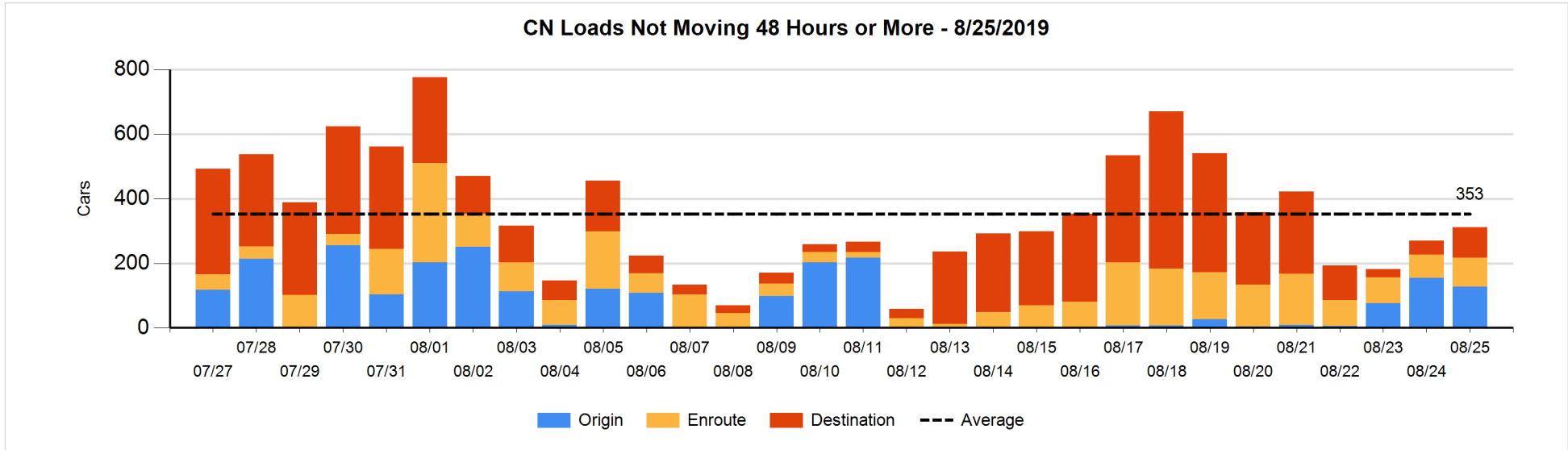


Loads Not Moving 48 Hours or More - 8/25/2019

	E Canada	Prince Rupert	Thunder Bay	USA/MEX	Vancouver	Total
CN						
Origin		79		2	47	128
Enroute	42	10		2	35	89
Destination	26		52	4	12	94
	68	89	52	8	94	311
CP						
Origin	26		1	1	130	158
Enroute	3		1	48	133	185
Destination	1		33	22	119	175
	30		35	71	382	518
US Rail / Short Line						
Origin						
Enroute				10		10
Destination	3			39	10	52
	3			49	10	62

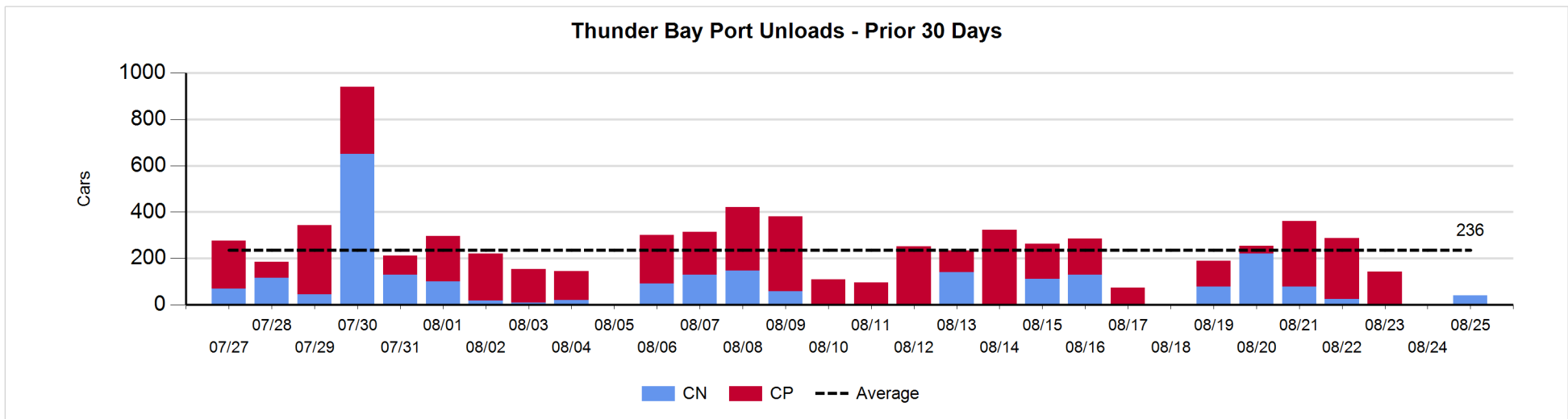
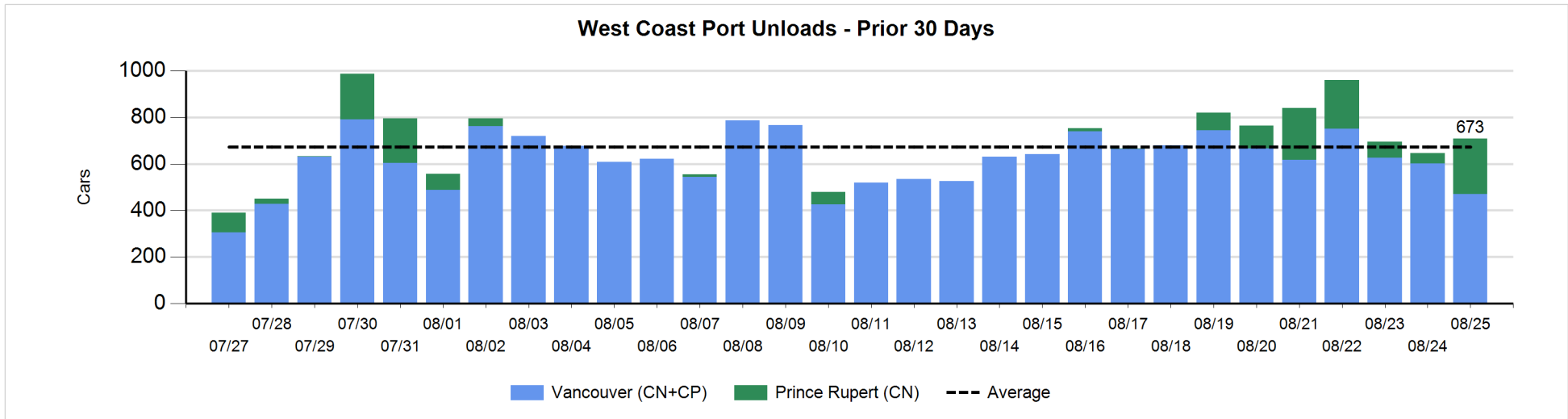
Change in Loads Not Moving 48 Hours or More - 8/25/2019

	E Canada	Prince Rupert	Thunder Bay	USA/MEX	Vancouver	Total
CN						
Origin	-1	0		-3	-22	-26
Enroute	-2	7		-3	14	16
Destination	2		49	2	-2	51
	-1	7	49	-4	-10	41
CP						
Origin	21		-89	-50	12	-106
Enroute	3		0	47	16	66
Destination	0		33	22	-28	27
	24		-56	19	0	-13
US Rail / Short Line						
Origin						
Enroute				2		2
Destination	0			32	2	34
	0			34	2	36



Port Unloads - 8/25/2019

	Prince Rupert	Vancouver	West Coast Total	Thunder Bay	Total
CN	238	98	336	40	376
CP		373	373		373
	238	471	709	40	749



Port Terminal Status

Vancouver

Daily Activity for 8/25/2019

	Cars Arrived	Cars Received in Interchange	Cars Delivered in Interchange	Cars Placed for Unloading	Loads on Wheels at Destination As of 8/25/2019
CN	261	8	135	59	264
CP	125	135	13	310	685
SRY				3	24

Port Unloads

	08/25	08/24	Week To Date	Last Week
CN	98	307	1,792	1,678
CP	373	295	2,681	2,740
SRY		6	54	25

Age Profile of Loaded Cars Waiting Placement for Unloading

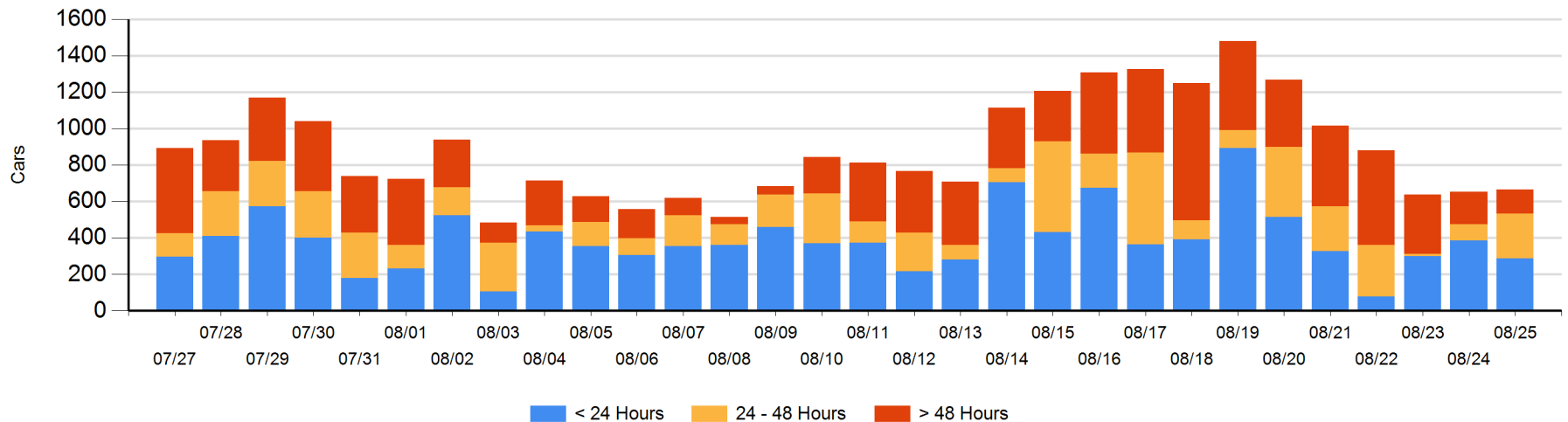
Today

	< 24 Hrs	24 - 48 Hrs	> 48-72 Hrs	> 72 Hrs	Total On Hand
CN	175	72		11	258
CP	112	173	34	87	406
SRY					0

Change in Last 24 Hours

	< 24 Hrs	24-48 Hrs	48 - 72 Hrs	> 72 Hrs
CN	147	20	-2	-1
CP	-246	135	29	-70
SRY				

Loaded Cars on Hand Vancouver Waiting for Placement - Last 30 Days All Railways



Port Terminal Status

Prince Rupert

Daily Activity for 8/25/2019

	Cars Arrived	Cars Received in Interchange	Cars Delivered in Interchange	Cars Placed for Unloading	Loads on Wheels at Destination As of 8/25/2019
CN	7			7	13

Port Unloads

	08/25	08/24	Week To Date	Last Week
CN	238	44	958	13

Age Profile of Loaded Cars Waiting Placement for Unloading

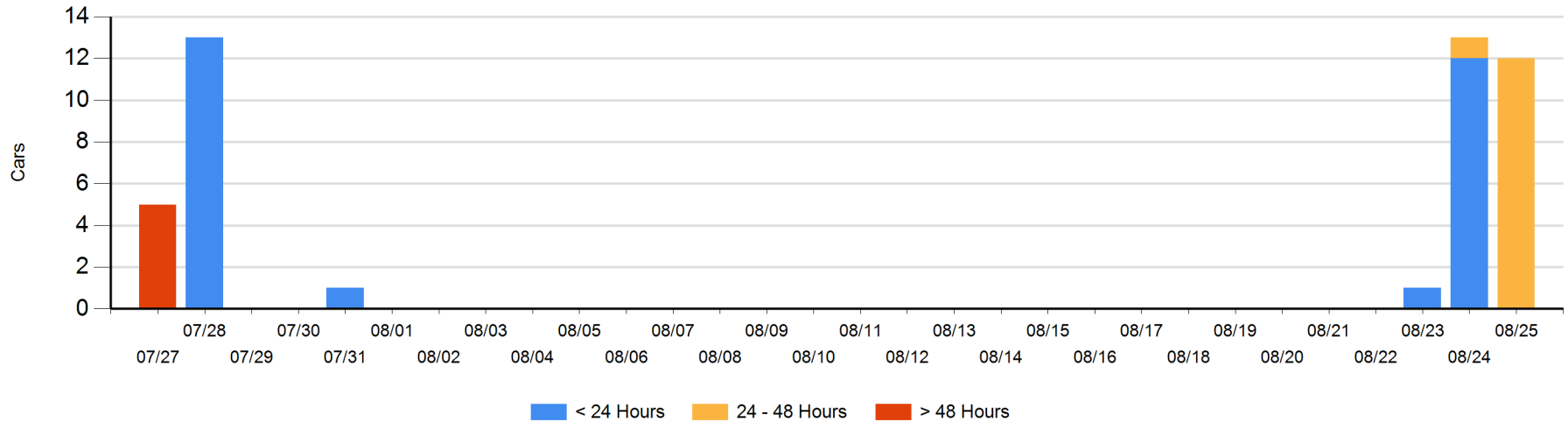
Today

	< 24 Hrs	24 - 48 Hrs	> 48-72 Hrs	> 72 Hrs	Total On Hand
CN		12			12

Change in Last 24 Hours

	< 24 Hrs	24-48 Hrs	48 - 72 Hrs	> 72 Hrs
CN	-12	11		

Loaded Cars on Hand Prince Rupert Waiting for Placement - Last 30 Days All Railways



Port Terminal Status

Thunder Bay

Daily Activity for 8/25/2019

	Cars Arrived	Cars Received in Interchange	Cars Delivered in Interchange	Cars Placed for Unloading	Loads on Wheels at Destination As of 8/25/2019
CN	316			316	330
CP	356			52	441

Port Unloads

	08/25	08/24	Week To Date	Last Week
CN	40		441	383
CP			834	1,050

Age Profile of Loaded Cars Waiting Placement for Unloading

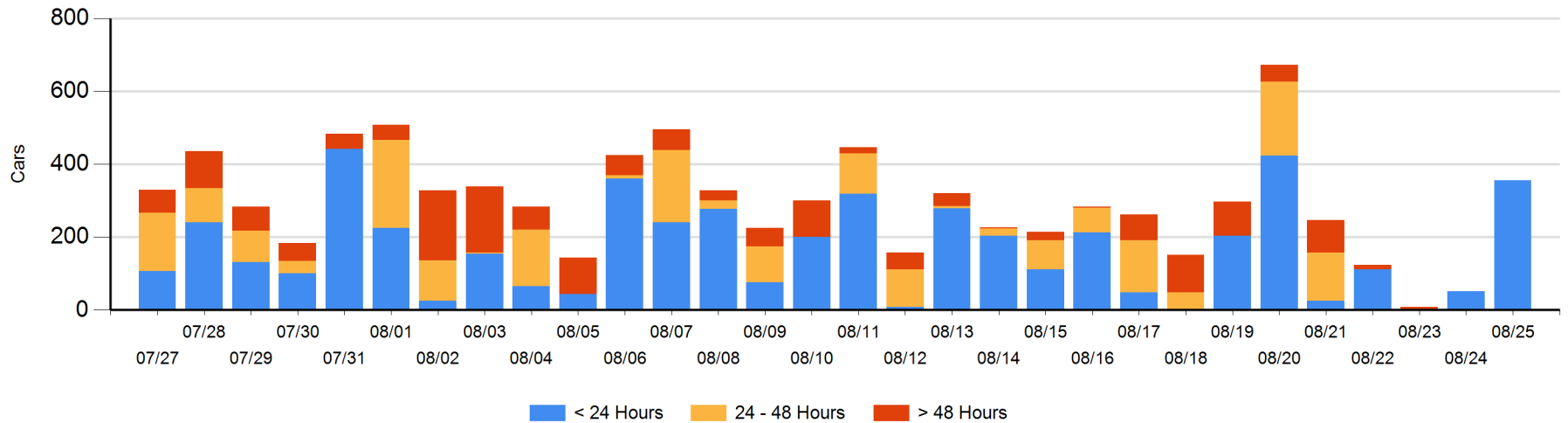
Today

	< 24 Hrs	24 - 48 Hrs	> 48-72 Hrs	> 72 Hrs	Total On Hand
CN					0
CP	356				356

Change in Last 24 Hours

	< 24 Hrs	24-48 Hrs	48 - 72 Hrs	> 72 Hrs
CN				
CP	304			

Loaded Cars on Hand Thunder Bay Waiting for Placement - Last 30 Days All Railways



Measurement Definitions

Loads on Wheels	<p>Count of loaded rail cars including all rail cars that have been released loaded at origin and have not been reported by the railway as unloaded at destination.</p> <p>Counts include all rail cars (hopper cars and boxcars) moving within a pipeline.</p>
Loads Not Moving	<p>Loaded rail cars for which the railways have not reported a movement event for 48 hours or more whether the rail car is at origin, enroute or at destination.</p>
Port Unloads	<p>Count of rail cars reported by railways as unloaded at the western port destinations of Vancouver, Prince Rupert and Thunder Bay.</p> <p>Unload counts include all rail cars (hopper cars and boxcars) unloaded by all receivers including major port terminals, transloaders and other receivers.</p>
Cars Arrived	<p>Count of rail cars reported as arrived at the destination railway terminal.</p>
Cars Received in Interchange	<p>Count of rail cars received in interchange by each railway within a destination railway terminal. Interchange activity is tracked for the Vancouver and Thunder Bay pipelines as applicable.</p>
Cars Delivered in Interchange	<p>Count of rail cars delivered in interchange by each railway within a destination railway terminal. Interchange activity is tracked for the Vancouver and Thunder Bay pipelines as applicable.</p>
Cars Placed for Unloading	<p>Count of rail cars reported by the railways as placed loaded at the receiver's facility for unloading.</p>
Loads on Wheels at Destination	<p>Count of rail cars that remain under load within the destination railway terminal including rail cars that have been reported as placed for unloading but not yet reported as unloaded.</p>
Waiting Placement for Unloading	<p>Count of rail cars that have been reported as arrived at the destination railway terminal but not reported as placed for unloading by the railway.</p> <p>For the Ports of Vancouver, Prince Rupert and Thunder Bay the count of rail cars waiting placement for unloading is categorized by age – i.e. the elapsed time from arrival at destination to the current report date.</p>