

SPEED READ

- Loads on wheels rose overnight, reflecting an increase in both CN and CP volumes. On a net basis, volumes increased due to higher volumes across all corridors other than Thunder Bay.
- Network fluidity improved overnight, led by a decline in idle car counts on CN by 40% (-117) offset by an increase in idle car counts on CP by 29% (+88). The total count of cars for 4+ days on both railways increased 3% (+5) overnight - currently at 184 cars.
- Two days in Week 4 unloads now at par with the prior week's performance, reflecting reduced unloads at Vancouver and Prince Rupert offset by improved week over week performance at Thunder Bay.

=====

Loads on Wheels

- Loads on wheels rose 3% (+227) overnight, due to higher volumes on both CN and CP - combined total at 7,030 and 1% below the trailing 30-day average.
- On a net basis, the increase in loads on wheels reflects higher volumes across all corridors other than Thunder Bay.
- CN volumes increased 6% (+162) overnight, with higher volumes in the Prince Rupert, USA/MEX and E. Canada corridors offset by reduced volumes in the Thunder Bay and Vancouver corridors. System wide CN loads on wheels currently at 2,995 and 9% below the trailing 30-day average.
- CP volumes rose slightly by 1% (+47) overnight, driven by a rise in volumes in the Vancouver and E. Canada corridors offset by a decline in volumes in the Thunder Bay and USA/MEX corridors. CP system wide loads on wheels now at 3,915 and 5% above the trailing 30-day average.
- Vancouver now at 3,912, gained 2% (+59) overnight, now 14% below the trailing 30-day average.
- The Prince Rupert pipeline currently at 1,164, the highest seen in the last 30 days, increased significantly by 42% (+344) overnight, and 113% above the trailing 30-day average.
- Thunder Bay volumes declined significantly by 17% (-232) overnight - now at 1,138 and 8% below the trailing 30-day average, with 66% of traffic moving on CP.

Hopper Car Rationing

- No hopper cars were rationed by either CN or CP in week 2.

Loads Not Moving

- **The count of cars not moving for 48+ hours fell 5% (-29) overnight, reflecting reduced counts on CN offset by higher counts on CP. Idle car counts currently at 566 and 43% below the trailing 30-day average.**
- CN
 - **The count of idle cars for 48+ hours declined 40% (-117) overnight - currently at 174 cars.**
 - The number of cars idle for 4+ days declined significantly by 54% (-85) overnight - currently at 73 cars.
 - The count of cars not moving for 7+ days declined 31% (-4) overnight - currently at 09 cars, the lowest seen in the last 30 days.
 - Vancouver represents 27% of all idle cars.
 - In total 13% of all idle cars are dwelling at origin locations.
- CP
 - **CP idle car counts for 48+ hours rose 29% (+88) overnight - now at 392 cars.**
 - The number of cars idle for 4+ days gained significantly (+90) overnight - currently at 111 cars.
 - The number of cars idle for 7+ days increased 20% (+1) overnight - currently at 06 cars.

- Vancouver accounts for 82% of all idle cars.
- In total 56% of all idle cars are dwelling at origin locations.

Port Performance

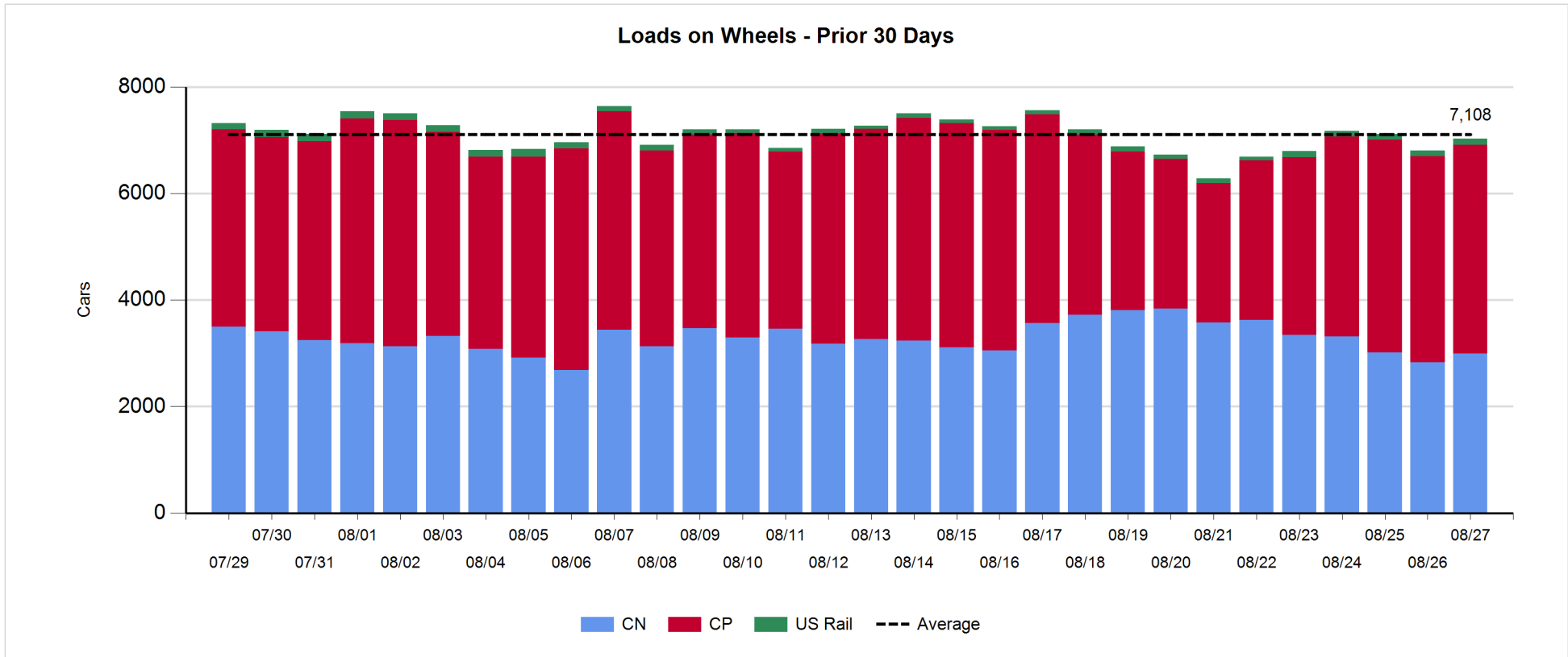
- CN and CP reported a total of 945 cars unloaded at the three major ports, now 1% above the trailing 30-day average. Two days in Week 4 unloads at par with last week's pace, reflecting reduced unloads at Vancouver and Prince Rupert offset by higher unloads at Thunder Bay.
- Vancouver
 - 581 unloads reported by CN and CP at the Port of Vancouver; CN - 133 and CP - 448. Two days in Week 4 unloads are tracking behind last week's performance by 250 unloads.
 - There are 1,450 cars on site at Vancouver with more than 700 cars arriving at the port in the last 24 hours.
 - CN and CP have 600 cars in British Columbia en route to Vancouver, with more than 300 cars at Kamloops and west, and 65% of traffic moving on CP.
- Prince Rupert
 - Prince Rupert reported 03 unloads, now behind last week's unloads after two days by more than 50 unloads.
 - Loads on wheels now above 1,000 cars - currently at 1,164 cars.
 - There are 350 cars west of Jasper en route to Prince Rupert.
 - There are more than 100 cars on site at Prince Rupert with zero cars arriving at the port in the last 24 hours.
- Thunder Bay
 - 361 unloads were reported at Thunder Bay yesterday. Two days in Week 4 unloads are tracking ahead of last week's pace by more than 300 unloads.
 - There are 600 cars on site at Thunder Bay with more than 250 cars arriving at the port in the prior 24 hours.
 - There are approximately 150 cars en route to Thunder Bay from Winnipeg and east.

Daily Loads on Wheels - 8/27/2019

	E Canada	Prince Rupert	Thunder Bay	USA/MEX	Vancouver	Total
CN	297	1,164	387	230	917	2,995
CP	79		751	120	2,965	3,915
Short Line					30	30
US Rail				90		90
	376	1,164	1,138	440	3,912	7,030

Change in Loads on Wheels - Prior 24 Hours

	E Canada	Prince Rupert	Thunder Bay	USA/MEX	Vancouver	Total
CN	4	344	-154	50	-82	162
CP	40		-78	-61	146	47
Short Line					-5	-8
US Rail				26		26
	41	344	-232	15	59	227

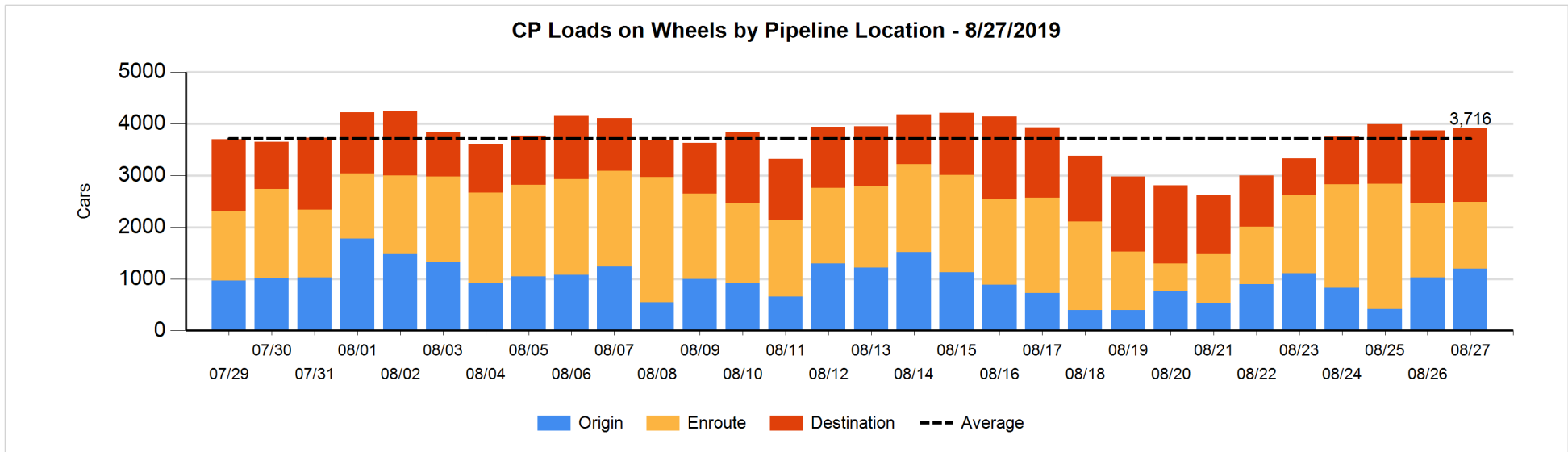
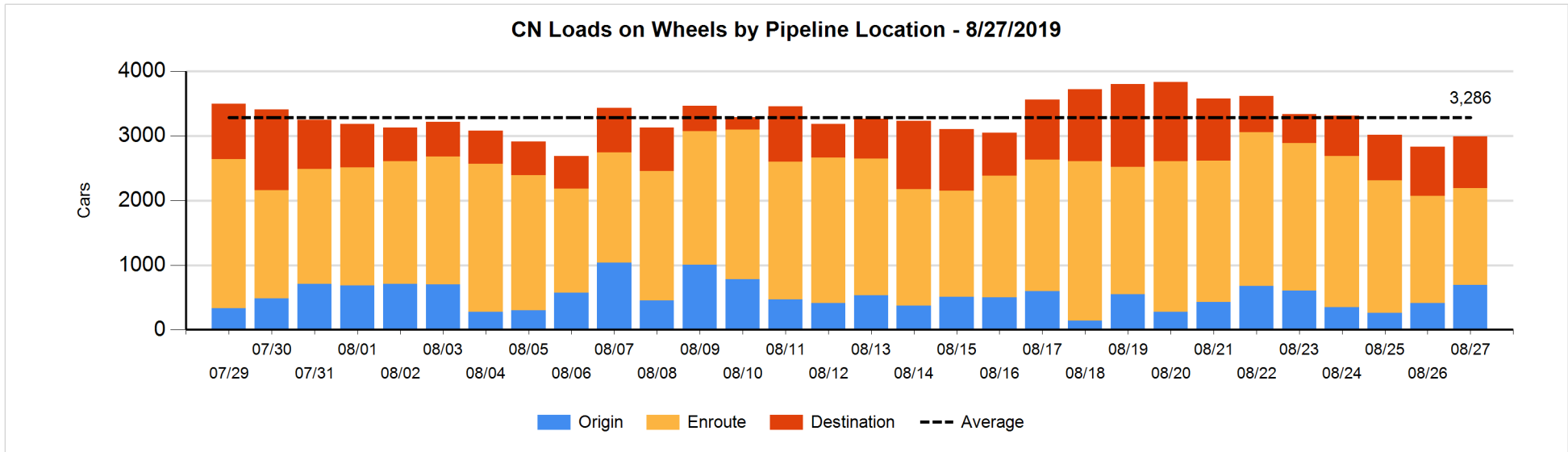


Daily Loads on Wheels By Pipeline Location - 8/27/2019

	E Canada	Prince Rupert	Thunder Bay	USA/MEX	Vancouver	Total
CN						
Origin	94	352	14	68	168	696
Enroute	157	695	134	136	371	1,493
Destination	46	117	239	26	378	806
	297	1,164	387	230	917	2,995
CP						
Origin	52		275	2	865	1,194
Enroute	26		109	115	1,048	1,298
Destination	1		367	3	1,052	1,423
	79		751	120	2,965	3,915
US Rail / Short Line						
Origin						
Enroute				61		61
Destination				29	30	59
				90	30	120

Change in Daily Loads on Wheels By Pipeline Location - Prior 24 Hours

	E Canada	Prince Rupert	Thunder Bay	USA/MEX	Vancouver	Total
CN						
Origin	55	142	14	58	15	284
Enroute	-48	205	-69	-29	-221	-162
Destination	-3	-3	-99	21	124	40
	4	344	-154	50	-82	162
CP						
Origin	23		10	-1	140	172
Enroute	17		-94	-50	-11	-138
Destination	0		6	-10	17	13
	40		-78	-61	146	47
US Rail / Short Line						
Origin						
Enroute				24		24
Destination	-3			2	-5	-6
	-3			26	-5	18

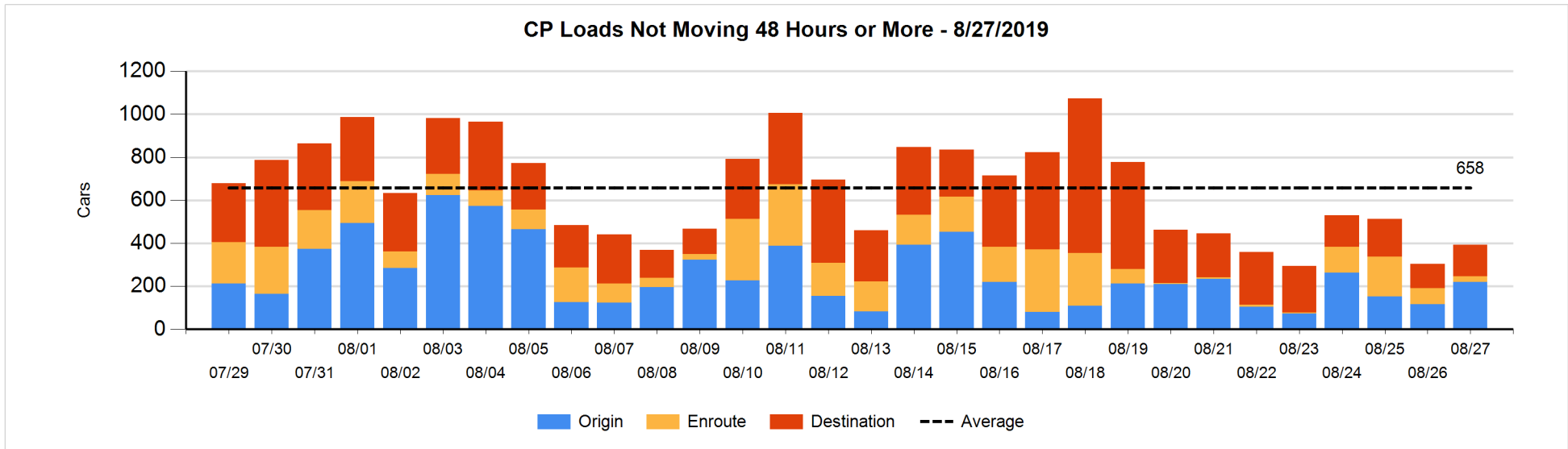
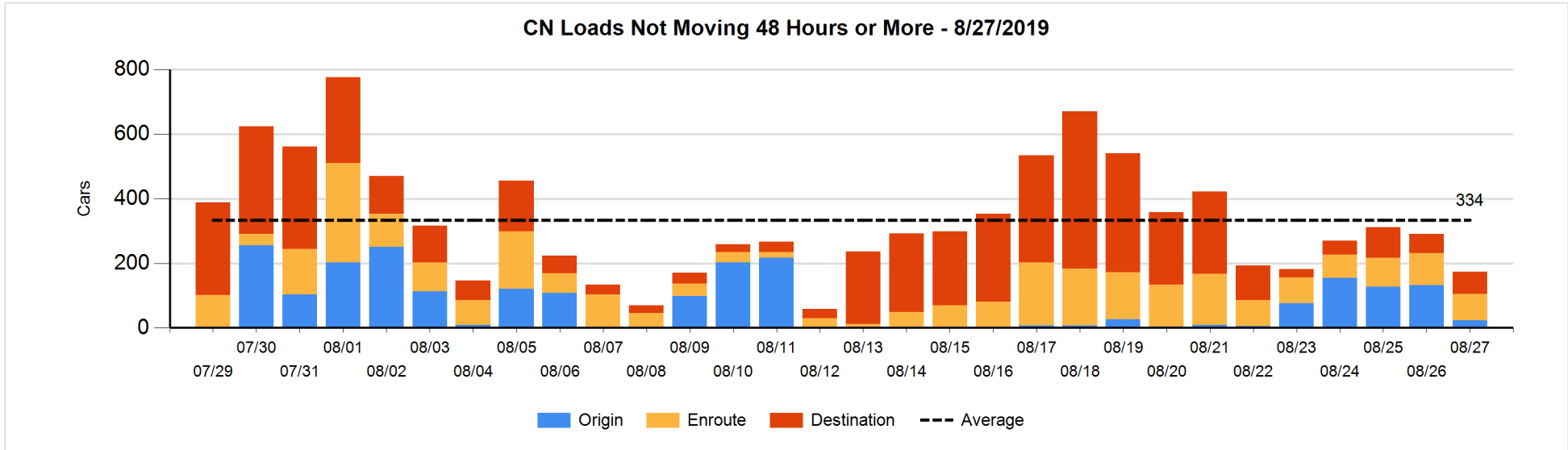


Loads Not Moving 48 Hours or More - 8/27/2019

	E Canada	Prince Rupert	Thunder Bay	USA/MEX	Vancouver	Total
CN						
Origin		1		2	20	23
Enroute	29	22	2	3	26	82
Destination	19	12	35	2	1	69
	48	35	37	7	47	174
CP						
Origin			49	1	170	220
Enroute	2		2	15	8	27
Destination	1				144	145
	3		51	16	322	392
US Rail / Short Line						
Origin						
Enroute				9		9
Destination				6	5	11
				15	5	20

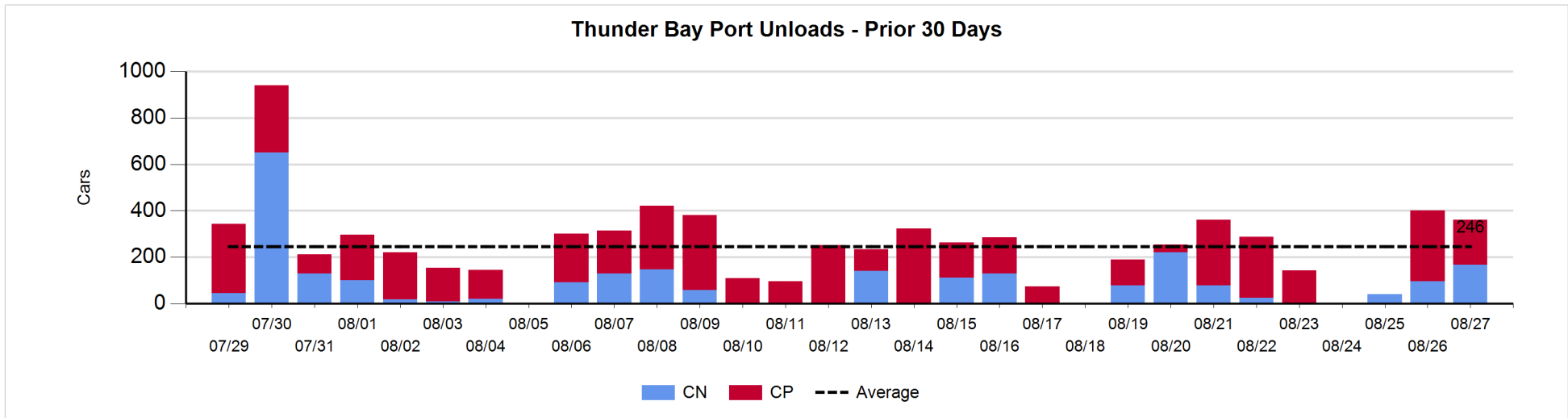
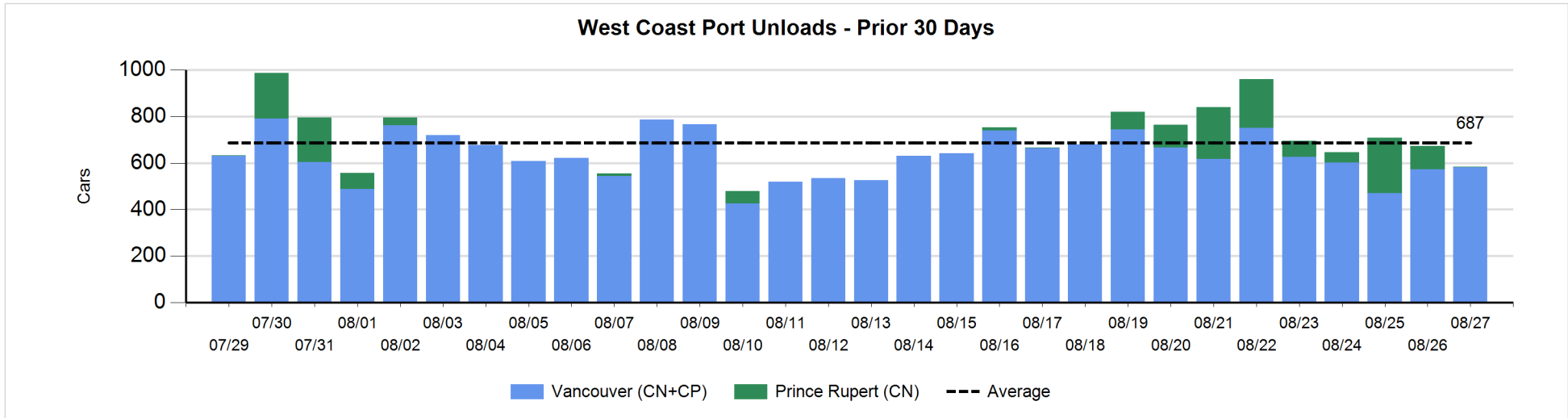
Change in Loads Not Moving 48 Hours or More - 8/27/2019

	E Canada	Prince Rupert	Thunder Bay	USA/MEX	Vancouver	Total
CN						
Origin		-82		0	-27	-109
Enroute	-27	11	1	-1	-1	-17
Destination	-8	0	29	0	-12	9
	-35	-71	30	-1	-40	-117
CP						
Origin	-24		49	0	79	104
Enroute	-2		1	13	-61	-49
Destination	0			-10	43	33
	-26		50	3	61	88
US Rail / Short Line						
Origin						
Enroute				4		4
Destination	-3			-11	-4	-18
	-3			-7	-4	-14



Port Unloads - 8/27/2019

	Prince Rupert	Vancouver	West Coast Total	Thunder Bay	Total
CN	3	133	136	168	304
CP		448	448	193	641
	3	581	584	361	945



Port Terminal Status

Vancouver

Daily Activity for 8/27/2019

	Cars Arrived	Cars Received in Interchange	Cars Delivered in Interchange	Cars Placed for Unloading	Loads on Wheels at Destination As of 8/27/2019
CN	146	116	107	214	378
CP	579	106	125	427	1,052
SRY		10		12	30

Port Unloads

	08/27	08/26	Week To Date	Last Week
CN	133	215	348	1,792
CP	448	358	806	2,681
SRY	11	10	21	54

Age Profile of Loaded Cars Waiting Placement for Unloading

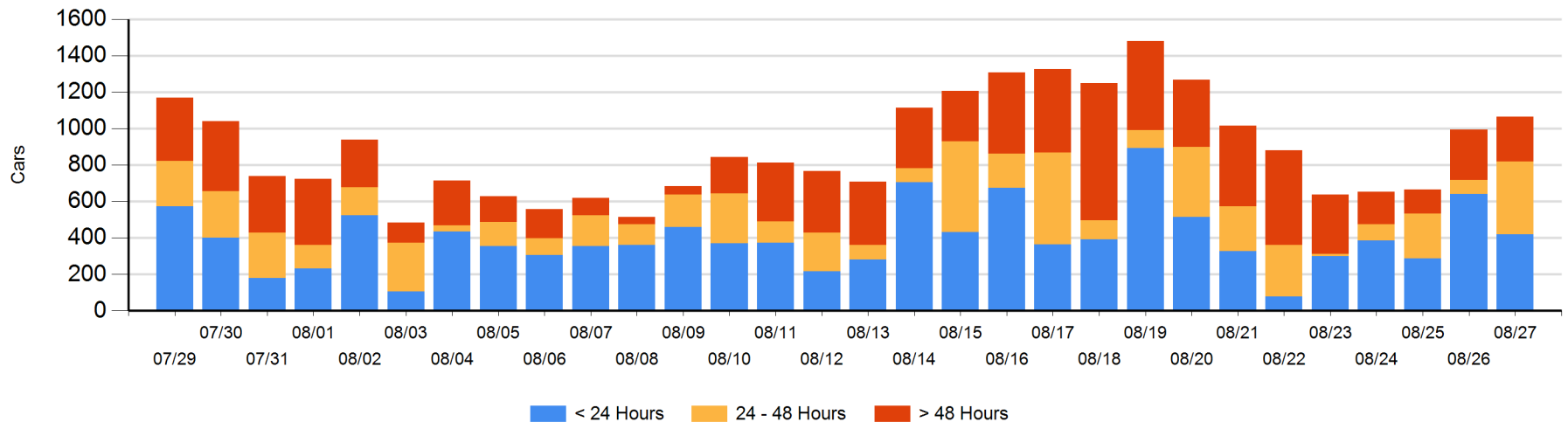
Today

	< 24 Hrs	24 - 48 Hrs	> 48-72 Hrs	> 72 Hrs	Total On Hand
CN	54	185	18	51	308
CP	364	216	25	152	757
SRY					0

Change in Last 24 Hours

	< 24 Hrs	24-48 Hrs	48 - 72 Hrs	> 72 Hrs
CN	-131	133	-38	41
CP	-92	191	-138	105
SRY				

Loaded Cars on Hand Vancouver Waiting for Placement - Last 30 Days All Railways



Port Terminal Status

Prince Rupert

Daily Activity for 8/27/2019

	Cars Arrived	Cars Received in Interchange	Cars Delivered in Interchange	Cars Placed for Unloading	Loads on Wheels at Destination As of 8/27/2019
CN				22	117

Port Unloads

	08/27	08/26	Week To Date	Last Week
CN	3	100	103	958

Age Profile of Loaded Cars Waiting Placement for Unloading

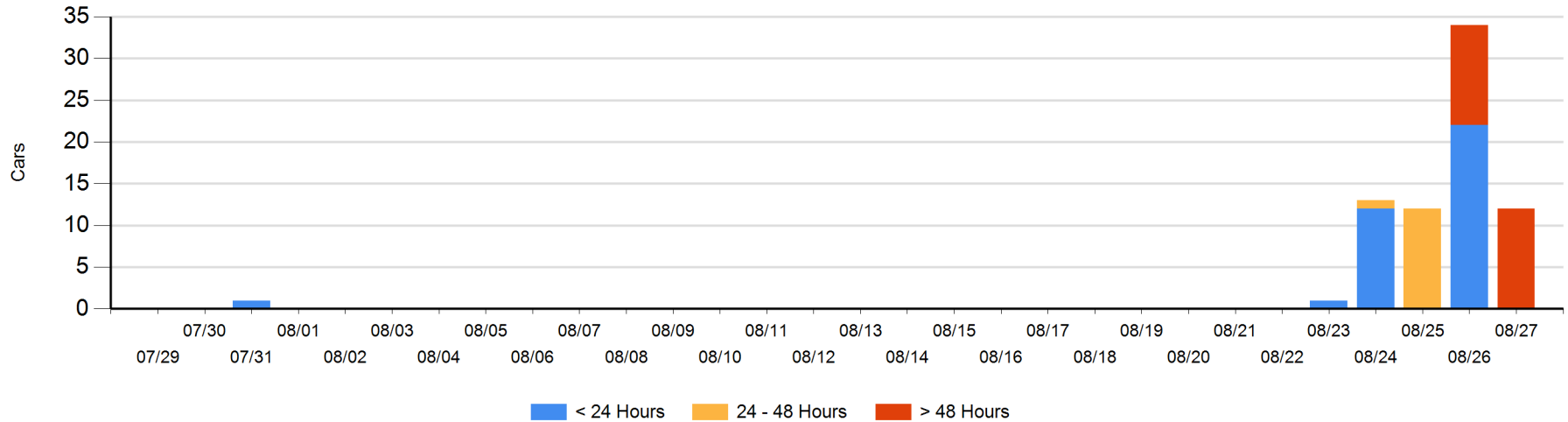
Today

	< 24 Hrs	24 - 48 Hrs	> 48-72 Hrs	> 72 Hrs	Total On Hand
CN				12	12

Change in Last 24 Hours

	< 24 Hrs	24-48 Hrs	48 - 72 Hrs	> 72 Hrs
CN	-22		-12	12

Loaded Cars on Hand Prince Rupert Waiting for Placement - Last 30 Days All Railways



Port Terminal Status

Thunder Bay

Daily Activity for 8/27/2019

	Cars Arrived	Cars Received in Interchange	Cars Delivered in Interchange	Cars Placed for Unloading	Loads on Wheels at Destination As of 8/27/2019
CN	69			105	239
CP	199			315	367

Port Unloads

	08/27	08/26	Week To Date	Last Week
CN	168	97	265	441
CP	193	304	497	834

Age Profile of Loaded Cars Waiting Placement for Unloading

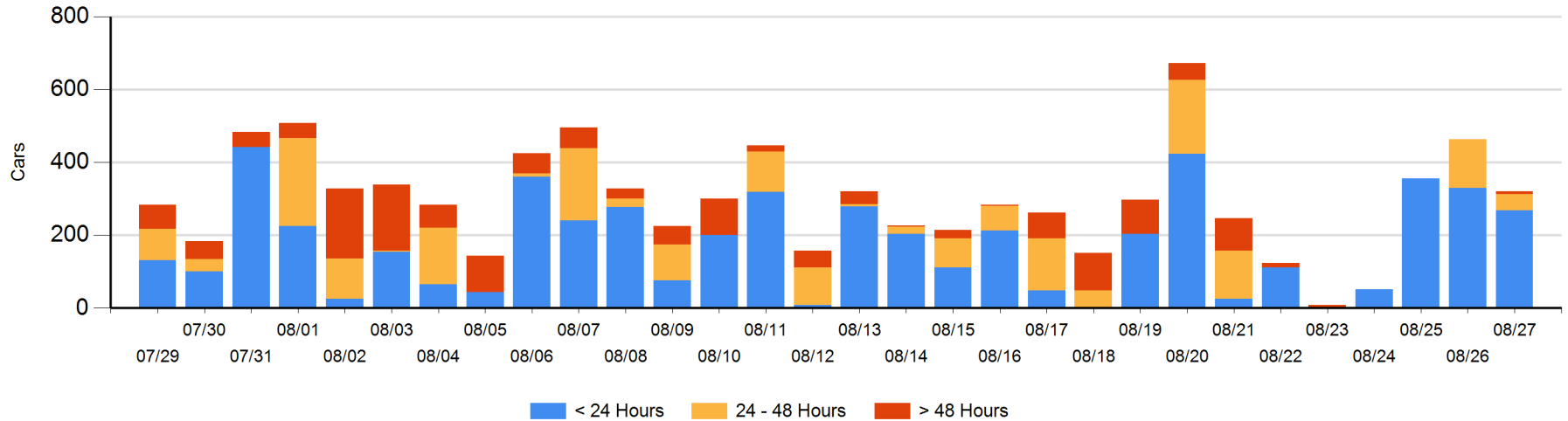
Today

	< 24 Hrs	24 - 48 Hrs	> 48-72 Hrs	> 72 Hrs	Total On Hand
CN	69				69
CP	199	44		8	251

Change in Last 24 Hours

	< 24 Hrs	24-48 Hrs	48 - 72 Hrs	> 72 Hrs
CN	-36			
CP	-25	-91		8

Loaded Cars on Hand Thunder Bay Waiting for Placement - Last 30 Days All Railways



Measurement Definitions

Loads on Wheels	<p>Count of loaded rail cars including all rail cars that have been released loaded at origin and have not been reported by the railway as unloaded at destination.</p> <p>Counts include all rail cars (hopper cars and boxcars) moving within a pipeline.</p>
Loads Not Moving	<p>Loaded rail cars for which the railways have not reported a movement event for 48 hours or more whether the rail car is at origin, enroute or at destination.</p>
Port Unloads	<p>Count of rail cars reported by railways as unloaded at the western port destinations of Vancouver, Prince Rupert and Thunder Bay.</p> <p>Unload counts include all rail cars (hopper cars and boxcars) unloaded by all receivers including major port terminals, transloaders and other receivers.</p>
Cars Arrived	<p>Count of rail cars reported as arrived at the destination railway terminal.</p>
Cars Received in Interchange	<p>Count of rail cars received in interchange by each railway within a destination railway terminal. Interchange activity is tracked for the Vancouver and Thunder Bay pipelines as applicable.</p>
Cars Delivered in Interchange	<p>Count of rail cars delivered in interchange by each railway within a destination railway terminal. Interchange activity is tracked for the Vancouver and Thunder Bay pipelines as applicable.</p>
Cars Placed for Unloading	<p>Count of rail cars reported by the railways as placed loaded at the receiver's facility for unloading.</p>
Loads on Wheels at Destination	<p>Count of rail cars that remain under load within the destination railway terminal including rail cars that have been reported as placed for unloading but not yet reported as unloaded.</p>
Waiting Placement for Unloading	<p>Count of rail cars that have been reported as arrived at the destination railway terminal but not reported as placed for unloading by the railway.</p> <p>For the Ports of Vancouver, Prince Rupert and Thunder Bay the count of rail cars waiting placement for unloading is categorized by age – i.e. the elapsed time from arrival at destination to the current report date.</p>