

**SPEED READ**

- Loads on wheels fell overnight, reflecting lower CP traffic offset by a rise in CN volumes. On a net basis, volumes fell due to reduced traffic in the Thunder Bay, E. Canada and USA/MEX corridors offset by higher traffic in the Vancouver and Prince Rupert corridors.
- Network fluidity deteriorated overnight, led by an increase in idle car counts on CP by 44% (+181). The total count of cars for 4+ days on both railways declined 18% (-42) overnight - presently at 194 cars.
- Four days in Week 4 unloads now behind prior week's performance by more than 300 unloads, marking lower unloads at Prince Rupert and Vancouver offset by improved week over week performance at Thunder Bay.

=====

**Loads on Wheels**

- Loads on wheels fell 2% (-162) overnight, due to lower traffic on CP offset by higher volumes on CN - combined total at 6,393 and 9% below the trailing 30-day average.
- On a net basis, the decline in loads on wheels indicates reduced traffic in the Thunder Bay, E. Canada and USA/MEX corridors offset by higher traffic in the Vancouver and Prince Rupert corridors.
- CN volumes increased 4% (+127) overnight, with higher traffic in the Vancouver and Prince Rupert corridors offset by reduced traffic in the Thunder Bay, E. Canada and USA/MEX corridors. System wide CN loads on wheels currently at 3,120 and 4% below the trailing 30-day average.
- CP volumes declined 8% (-286) overnight, driven by a decline in traffic in the Vancouver corridor offset by an increase in traffic in the Thunder Bay, USA/MEX and E. Canada corridors. CP system wide loads on wheels currently at 3,196 and 13% below the trailing 30-day average.
- Vancouver currently at 3,712, increased marginally by 1% (+45) overnight, now 17% below the trailing 30-day average.
- The Prince Rupert pipeline presently at 1,265, the highest seen in the last 30 days, increased for the fourth consecutive day, up 1% (+10) overnight, and 111% above the trailing 30-day average.
- Thunder Bay volumes fell for the fourth consecutive day, down 18% (-171) overnight - currently at 789 and 35% below the trailing 30-day average, with 83% of traffic moving on CP.

**Hopper Car Rationing**

- No hopper cars were rationed by either CN or CP in week 3.

**Loads Not Moving**

- **The count of cars not moving for 48+ hours rose 29% (+181) overnight, marking higher counts on CP. Idle car counts presently at 812 and 15% below the trailing 30-day average.**
- CN
  - **The count of idle cars for 48+ hours remained unchanged (0) overnight - currently at 216 cars.**
  - The number of cars idle for 4+ days declined 7% (-4) overnight and have now decreased for the third consecutive day - currently at 52 cars.
  - The count of cars not moving for 7+ days declined 6% (-1) overnight - currently at 16 cars.
  - Vancouver represents 22% of all idle cars.
  - In total 14% of all idle cars are dwelling at origin locations.
- CP
  - **CP idle car counts for 48+ hours increased for the third consecutive day, up 44% (+181) overnight - currently at 596 cars.**

- The number of cars idle for 4+ days declined 21% (-38) overnight - currently at 142 cars.
- The number of cars idle for 7+ days rose 33% (+3) overnight and have now increased for the third consecutive day - currently at 12 cars.
- Vancouver accounts for 62% of all idle cars.
- In total 30% of all idle cars are dwelling at origin locations.

### **Port Performance**

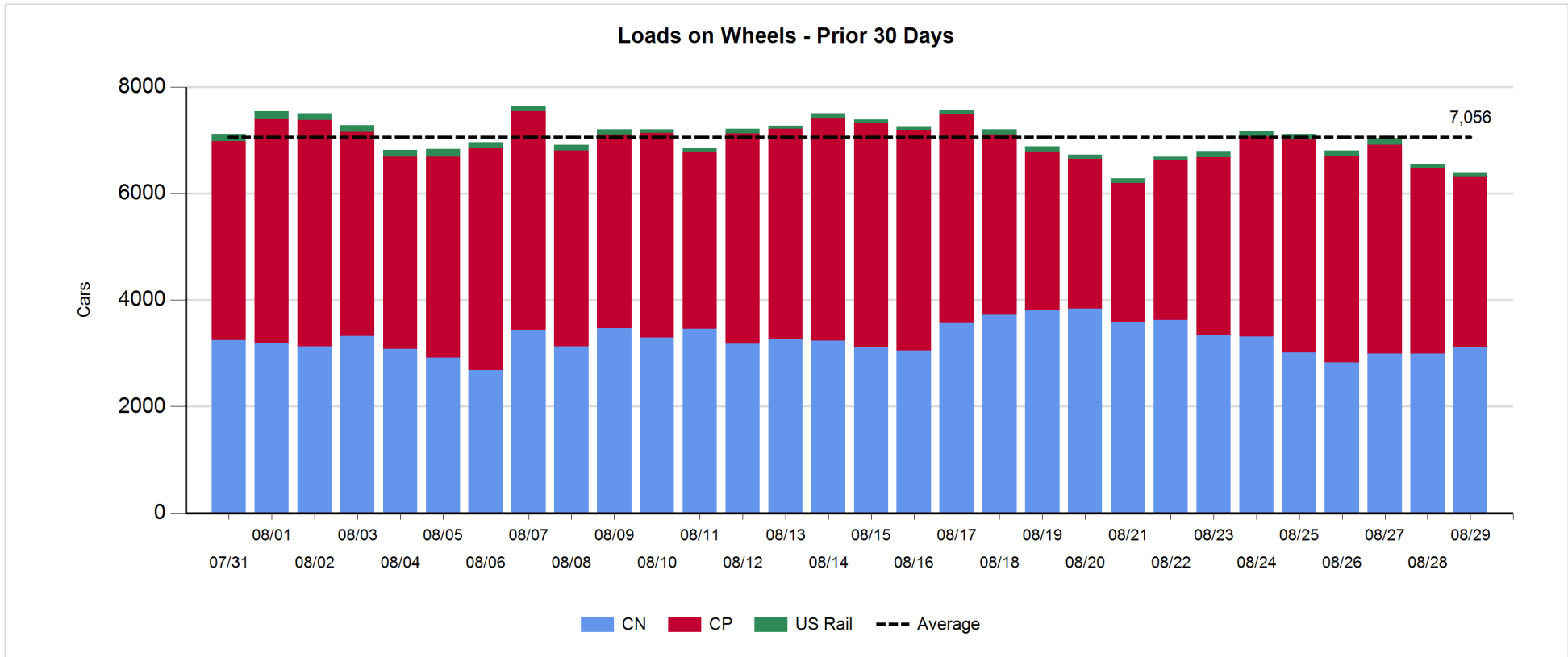
- CN and CP reported a total of 1,125 cars unloaded at the three major ports, now 24% above the trailing 30-day average. Four days in Week 4 unloads now behind last week's pace by more than 300 unloads, marking lower unloads at Prince Rupert and Vancouver offset by higher unloads at Thunder Bay.
- Vancouver
  - 749 unloads reported by CN and CP at the Port of Vancouver; CN - 288 and CP - 461. Four days in Week 4 unloads are tracking behind last week's performance by 150 unloads.
  - There are more than 950 cars on site at Vancouver with more than 500 cars arriving at the port in the last 24 hours.
  - CN and CP have 650 cars in British Columbia en route to Vancouver, with 150 cars at Kamloops and west, and 91% of traffic moving on CP.
- Prince Rupert
  - Prince Rupert reported 93 unloads, now behind last week's unloads after four days by 300 unloads.
  - Loads on wheels now above 1,000 cars - presently at 1,265 cars.
  - There are 500 cars west of Jasper en route to Prince Rupert.
  - There are more than 150 cars on site at Prince Rupert with more than 200 cars arriving at the port in the last 24 hours.
- Thunder Bay
  - 283 unloads were reported at Thunder Bay yesterday. Four days in Week 4 unloads are tracking ahead of last week's pace by more than 100 unloads.
  - There are less than 550 cars on site at Thunder Bay with 250 cars arriving at the port in the prior 24 hours.
  - There are 18 cars en route to Thunder Bay from Winnipeg and east.

**Daily Loads on Wheels - 8/29/2019**

|            | E Canada | Prince Rupert | Thunder Bay | USA/MEX | Vancouver | Total |
|------------|----------|---------------|-------------|---------|-----------|-------|
| CN         | 216      | 1,265         | 135         | 217     | 1,287     | 3,120 |
| CP         | 74       |               | 654         | 60      | 2,408     | 3,196 |
| Short Line |          |               |             |         | 17        | 17    |
| US Rail    |          |               |             | 60      |           | 60    |
|            | 290      | 1,265         | 789         | 337     | 3,712     | 6,393 |

**Change in Loads on Wheels - Prior 24 Hours**

|            | E Canada | Prince Rupert | Thunder Bay | USA/MEX | Vancouver | Total |
|------------|----------|---------------|-------------|---------|-----------|-------|
| CN         | -37      | 10            | -221        | -21     | 396       | 127   |
| CP         | 3        |               | 50          | 12      | -351      | -286  |
| Short Line | -3       |               |             |         | 0         | -3    |
| US Rail    |          |               |             | 0       |           | 0     |
|            | -37      | 10            | -171        | -9      | 45        | -162  |

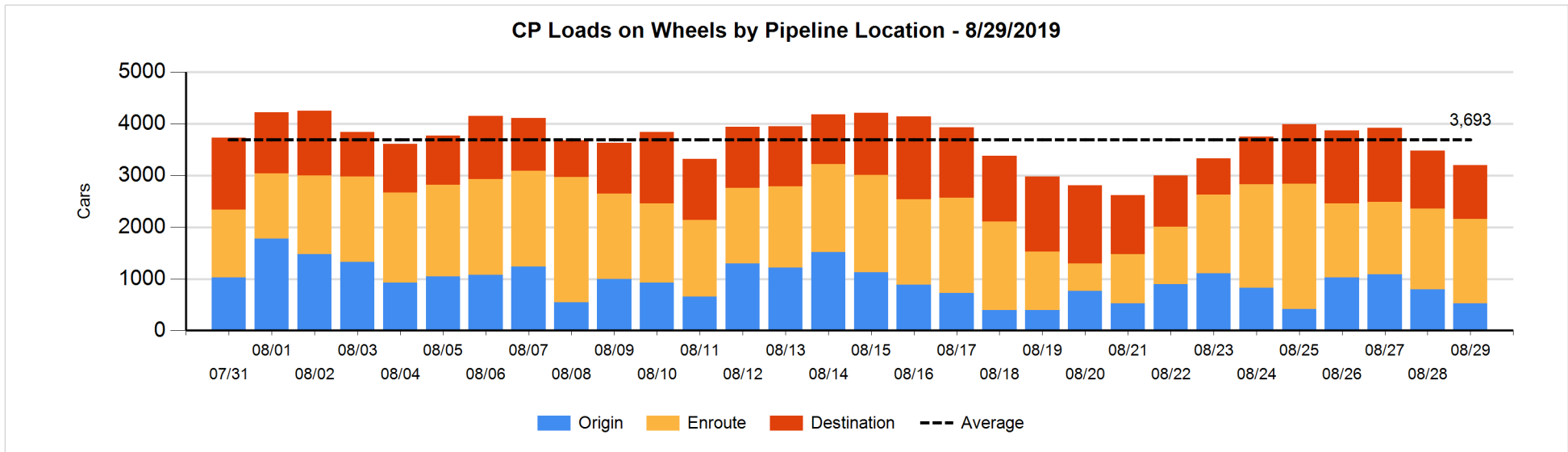
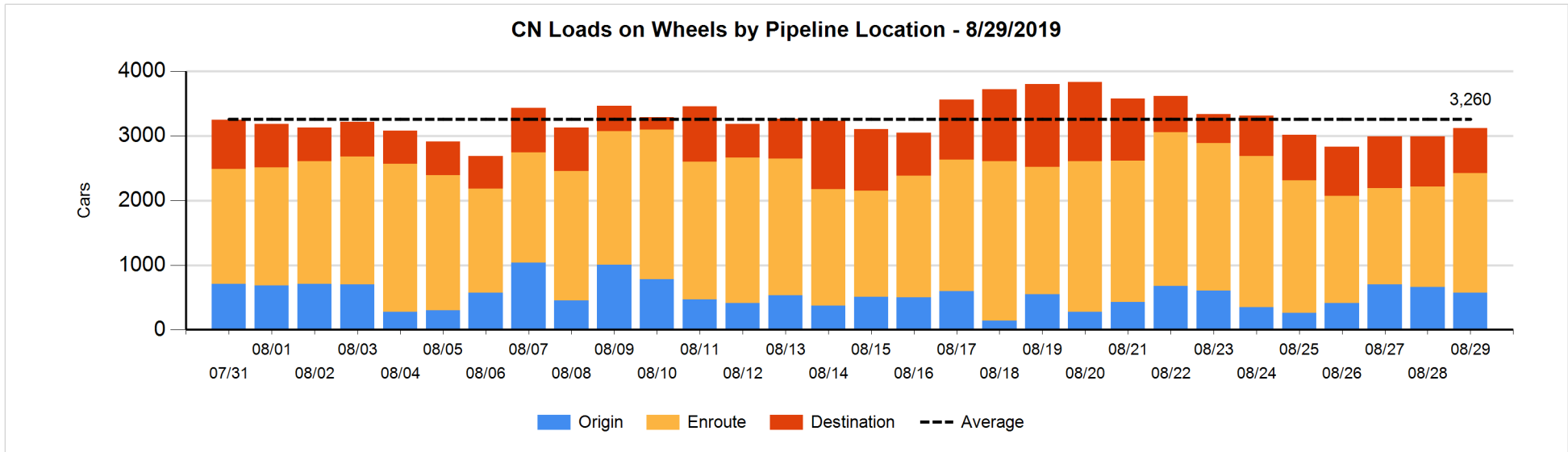


**Daily Loads on Wheels By Pipeline Location - 8/29/2019**

|                      | E Canada | Prince Rupert | Thunder Bay | USA/MEX | Vancouver | Total |
|----------------------|----------|---------------|-------------|---------|-----------|-------|
| CN                   |          |               |             |         |           |       |
| Origin               | 2        | 107           |             | 25      | 442       | 576   |
| Enroute              | 153      | 991           | 16          | 185     | 500       | 1,845 |
| Destination          | 61       | 167           | 119         | 7       | 345       | 699   |
|                      | 216      | 1,265         | 135         | 217     | 1,287     | 3,120 |
| CP                   |          |               |             |         |           |       |
| Origin               | 58       |               | 121         | 3       | 341       | 523   |
| Enroute              | 10       |               | 114         | 40      | 1,467     | 1,631 |
| Destination          | 6        |               | 419         | 17      | 600       | 1,042 |
|                      | 74       |               | 654         | 60      | 2,408     | 3,196 |
| US Rail / Short Line |          |               |             |         |           |       |
| Origin               |          |               |             |         |           |       |
| Enroute              |          |               |             | 43      |           | 43    |
| Destination          |          |               |             | 17      | 17        | 34    |
|                      |          |               |             | 60      | 17        | 77    |

**Change in Daily Loads on Wheels By Pipeline Location - Prior 24 Hours**

|                      | E Canada | Prince Rupert | Thunder Bay | USA/MEX | Vancouver | Total |
|----------------------|----------|---------------|-------------|---------|-----------|-------|
| CN                   |          |               |             |         |           |       |
| Origin               | 0        | -201          |             | -32     | 151       | -82   |
| Enroute              | -18      | 85            | 0           | 22      | 196       | 285   |
| Destination          | -19      | 126           | -221        | -11     | 49        | -76   |
|                      | -37      | 10            | -221        | -21     | 396       | 127   |
| CP                   |          |               |             |         |           |       |
| Origin               | 0        |               | 1           | 1       | -275      | -273  |
| Enroute              | -2       |               | -149        | -3      | 219       | 65    |
| Destination          | 5        |               | 198         | 14      | -295      | -78   |
|                      | 3        |               | 50          | 12      | -351      | -286  |
| US Rail / Short Line |          |               |             |         |           |       |
| Origin               |          |               |             |         |           |       |
| Enroute              |          |               |             | 6       |           | 6     |
| Destination          | -3       |               |             | -6      | 0         | -9    |
|                      | -3       |               |             | 0       | 0         | -3    |

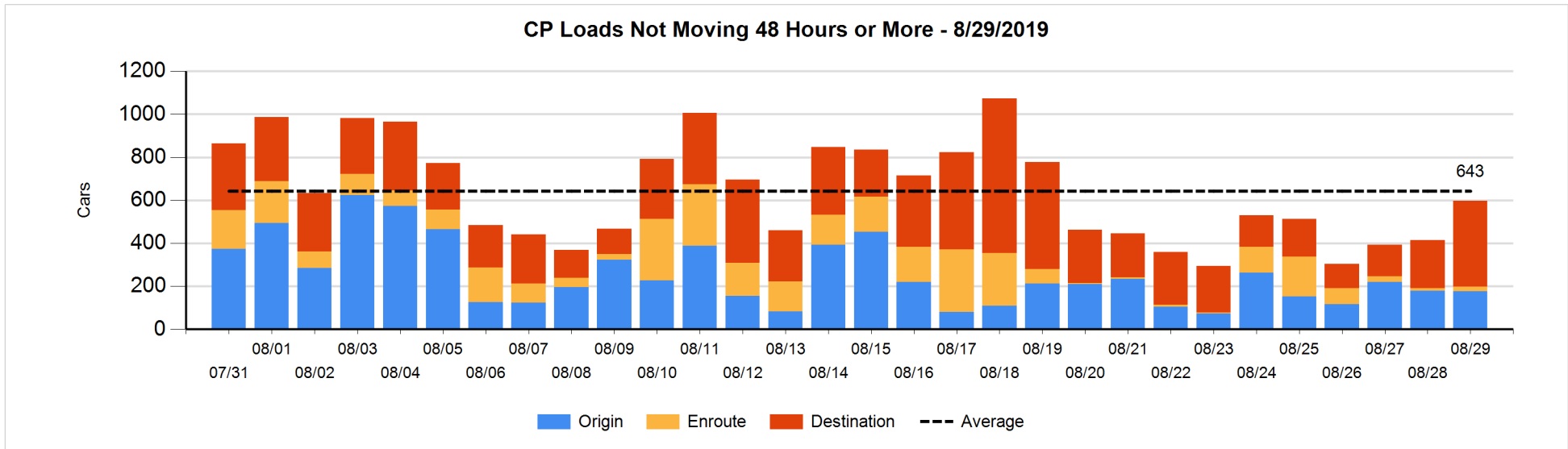
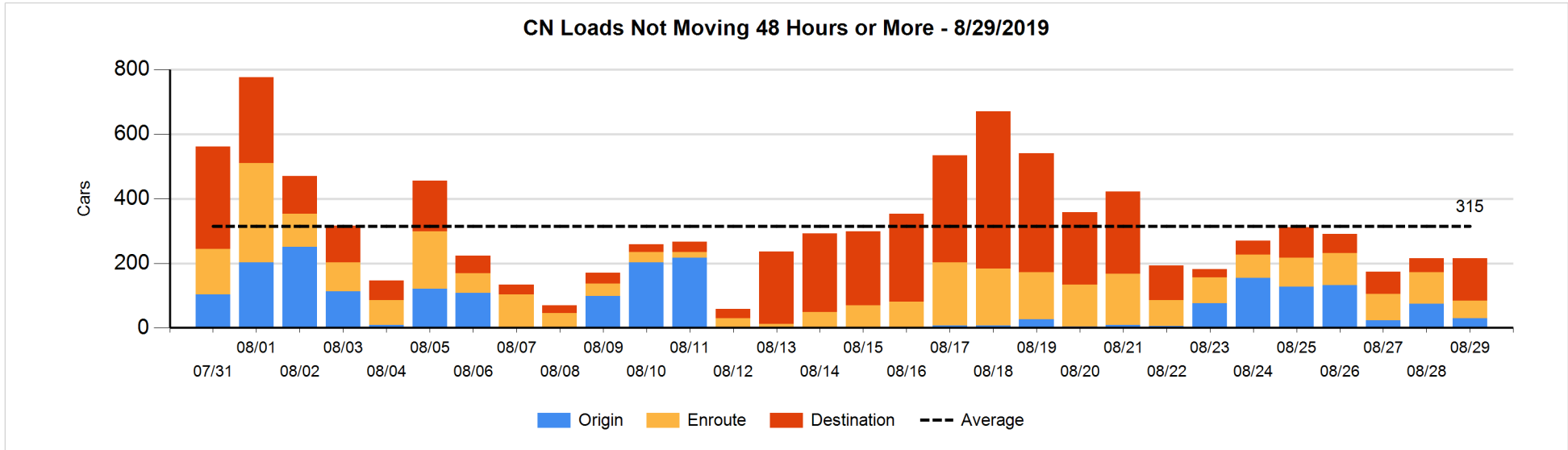


**Loads Not Moving 48 Hours or More - 8/29/2019**

|                             | E Canada | Prince Rupert | Thunder Bay | USA/MEX | Vancouver | Total |
|-----------------------------|----------|---------------|-------------|---------|-----------|-------|
| <b>CN</b>                   |          |               |             |         |           |       |
| Origin                      | 2        |               |             | 25      | 3         | 30    |
| Enroute                     | 18       | 9             |             | 5       | 22        | 54    |
| Destination                 | 13       |               | 95          | 1       | 23        | 132   |
|                             | 33       | 9             | 95          | 31      | 48        | 216   |
| <b>CP</b>                   |          |               |             |         |           |       |
| Origin                      | 52       |               | 8           | 2       | 115       | 177   |
| Enroute                     | 2        |               |             | 2       | 16        | 20    |
| Destination                 | 1        |               | 156         | 3       | 239       | 399   |
|                             | 55       |               | 164         | 7       | 370       | 596   |
| <b>US Rail / Short Line</b> |          |               |             |         |           |       |
| Origin                      |          |               |             |         |           |       |
| Enroute                     |          |               |             | 10      |           | 10    |
| Destination                 |          |               |             | 7       | 4         | 11    |
|                             |          |               |             | 17      | 4         | 21    |

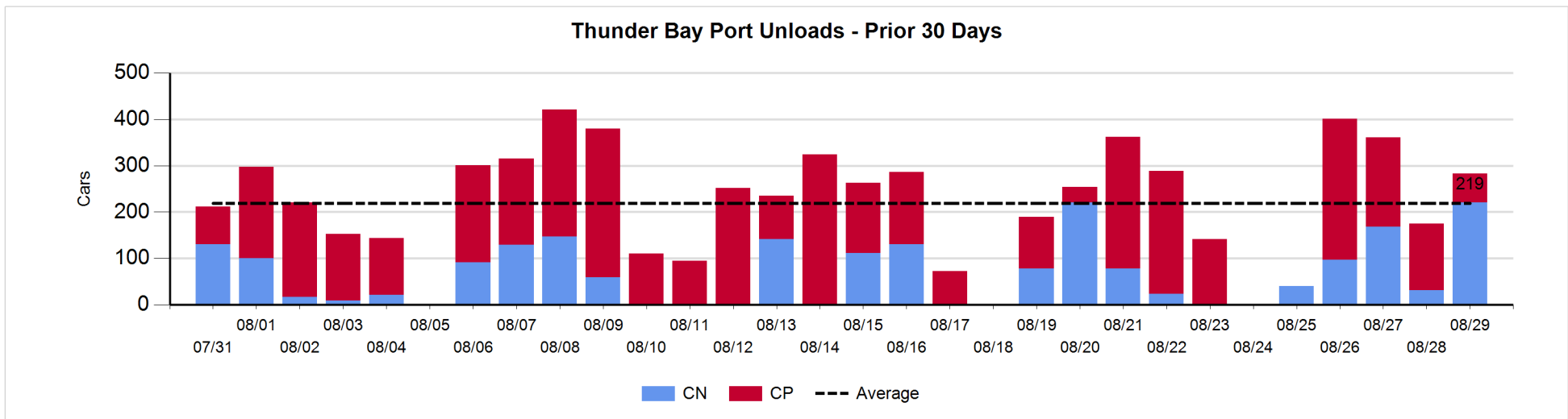
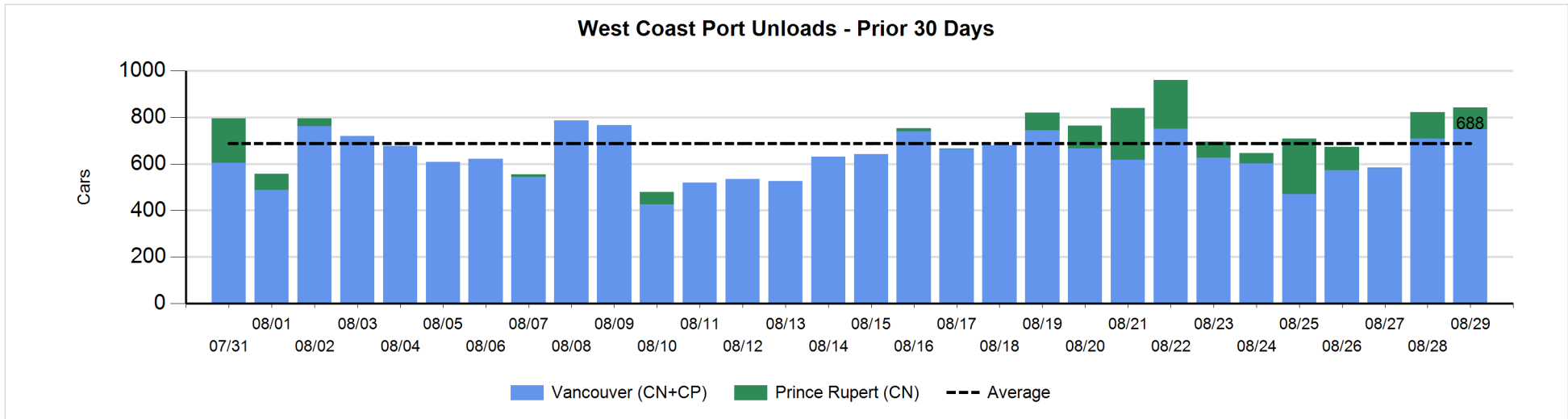
**Change in Loads Not Moving 48 Hours or More - 8/29/2019**

|                             | E Canada | Prince Rupert | Thunder Bay | USA/MEX | Vancouver | Total |
|-----------------------------|----------|---------------|-------------|---------|-----------|-------|
| <b>CN</b>                   |          |               |             |         |           |       |
| Origin                      | 0        |               |             | 15      | -60       | -45   |
| Enroute                     | -3       | 0             | -2          | -9      | -29       | -43   |
| Destination                 | -5       |               | 77          | 1       | 15        | 88    |
|                             | -8       | 0             | 75          | 7       | -74       | 0     |
| <b>CP</b>                   |          |               |             |         |           |       |
| Origin                      | 51       |               | 3           | 0       | -55       | -1    |
| Enroute                     | 0        |               | -1          | 0       | 8         | 7     |
| Destination                 | 0        |               | 156         | 3       | 16        | 175   |
|                             | 51       |               | 158         | 3       | -31       | 181   |
| <b>US Rail / Short Line</b> |          |               |             |         |           |       |
| Origin                      |          |               |             |         |           |       |
| Enroute                     |          |               |             | 3       |           | 3     |
| Destination                 |          |               |             | 1       | -5        | -4    |
|                             |          |               |             | 4       | -5        | -1    |



Port Unloads - 8/29/2019

|    | Prince Rupert | Vancouver | West Coast Total | Thunder Bay | Total |
|----|---------------|-----------|------------------|-------------|-------|
| CN | 93            | 288       | 381              | 221         | 602   |
| CP |               | 461       | 461              | 62          | 523   |
|    | 93            | 749       | 842              | 283         | 1,125 |





**Port Terminal Status**

**Vancouver**

Daily Activity for 8/29/2019

|     | Cars Arrived | Cars Received in Interchange | Cars Delivered in Interchange | Cars Placed for Unloading | Loads on Wheels at Destination As of 8/29/2019 |
|-----|--------------|------------------------------|-------------------------------|---------------------------|--|
| CN  | 89           | 274                          | 96                            | 183                       | 345  |
| CP  | 423          | 96                           | 284                           | 423                       | 600  |
| SRY |              | 10                           |                               | 9                         | 17   |

**Port Unloads**

|     | 08/29 | 08/28 | Week To Date | Last Week |
|-----|-------|-------|--------------|-----------|
| CN  | 288   | 337   | 973          | 1,792     |
| CP  | 461   | 371   | 1,638        | 2,681     |
| SRY | 8     | 19    | 48           | 54        |

**Age Profile of Loaded Cars Waiting Placement for Unloading**

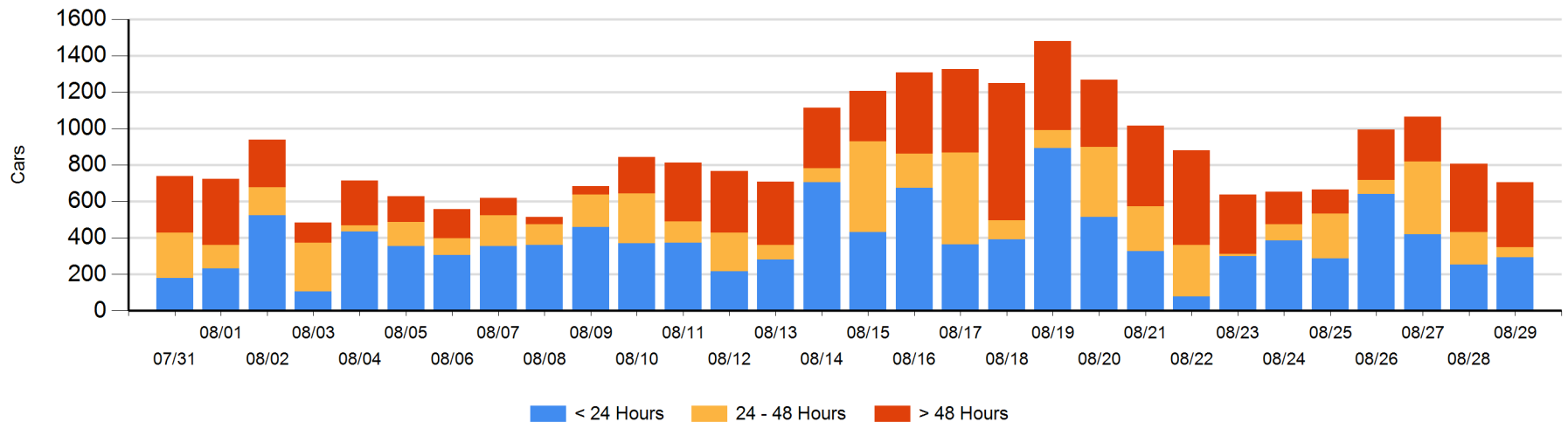
**Today**

|     | < 24 Hrs | 24 - 48 Hrs | > 48-72 Hrs | > 72 Hrs | Total On Hand |
|-----|----------|-------------|-------------|----------|---------------|
| CN  | 38       | 48          | 12          | 34       | 132           |
| CP  | 255      | 8           | 166         | 144      | 573           |
| SRY |          |             |             |          | 0             |

**Change in Last 24 Hours**

|     | < 24 Hrs | 24-48 Hrs | 48 - 72 Hrs | > 72 Hrs |
|-----|----------|-----------|-------------|----------|
| CN  | -96      | 36        | -20         | 30       |
| CP  | 137      | -161      | -11         | -18      |
| SRY |          |           |             |          |

**Loaded Cars on Hand Vancouver Waiting for Placement - Last 30 Days All Railways**



**Port Terminal Status**

**Prince Rupert**

Daily Activity for 8/29/2019

|    | Cars Arrived | Cars Received in Interchange | Cars Delivered in Interchange | Cars Placed for Unloading | Loads on Wheels at Destination As of 8/29/2019 |
|----|--------------|------------------------------|-------------------------------|---------------------------|--|
| CN | 219          |                              |                               | 219                       | 167  |

**Port Unloads**

|    | 08/29 | 08/28 | Week To Date | Last Week |
|----|-------|-------|--------------|-----------|
| CN | 93    | 114   | 310          | 958       |

**Age Profile of Loaded Cars Waiting Placement for Unloading**

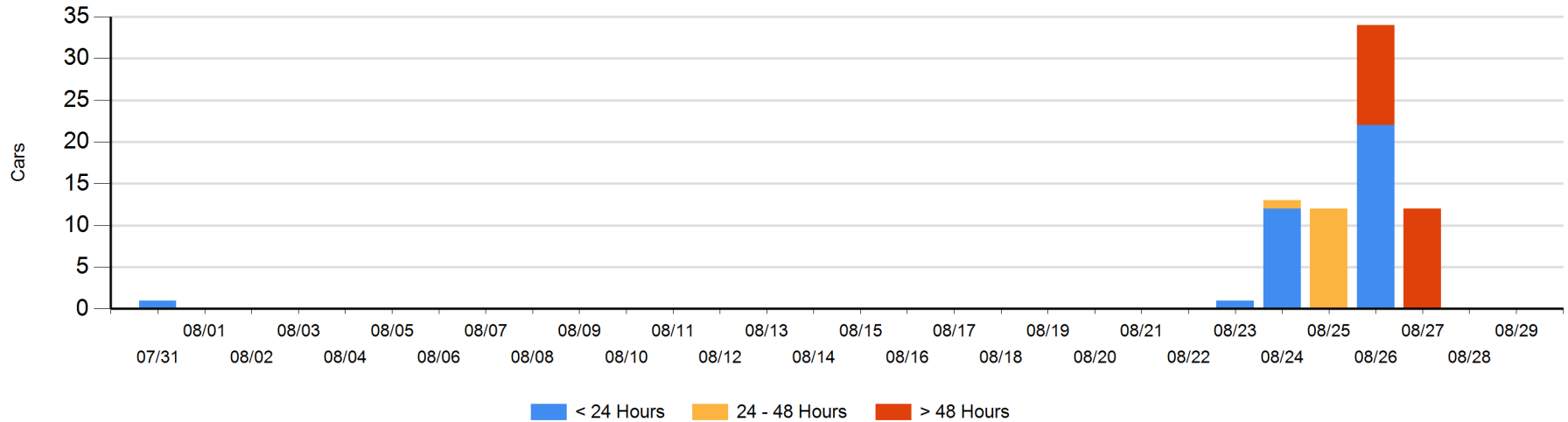
**Today**

|    | < 24 Hrs | 24 - 48 Hrs | > 48-72 Hrs | > 72 Hrs | Total On Hand |
|----|----------|-------------|-------------|----------|---------------|
| CN |          |             |             |          | 0             |

**Change in Last 24 Hours**

|    | < 24 Hrs | 24-48 Hrs | 48 - 72 Hrs | > 72 Hrs |
|----|----------|-----------|-------------|----------|
| CN |          |           |             |          |

Loaded Cars on Hand Prince Rupert Waiting for Placement - Last 30 Days All Railways



**Port Terminal Status**

**Thunder Bay**

Daily Activity for 8/29/2019

|    | Cars Arrived | Cars Received in Interchange | Cars Delivered in Interchange | Cars Placed for Unloading | Loads on Wheels at Destination As of 8/29/2019 |
|----|--------------|------------------------------|-------------------------------|---------------------------|--|
| CN |              |                              |                               | 108                       | 119  |
| CP | 260          |                              |                               | 96                        | 419  |

**Port Unloads**

|    | 08/29 | 08/28 | Week To Date | Last Week |
|----|-------|-------|--------------|-----------|
| CN | 221   | 31    | 517          | 441       |
| CP | 62    | 144   | 703          | 834       |

**Age Profile of Loaded Cars Waiting Placement for Unloading**

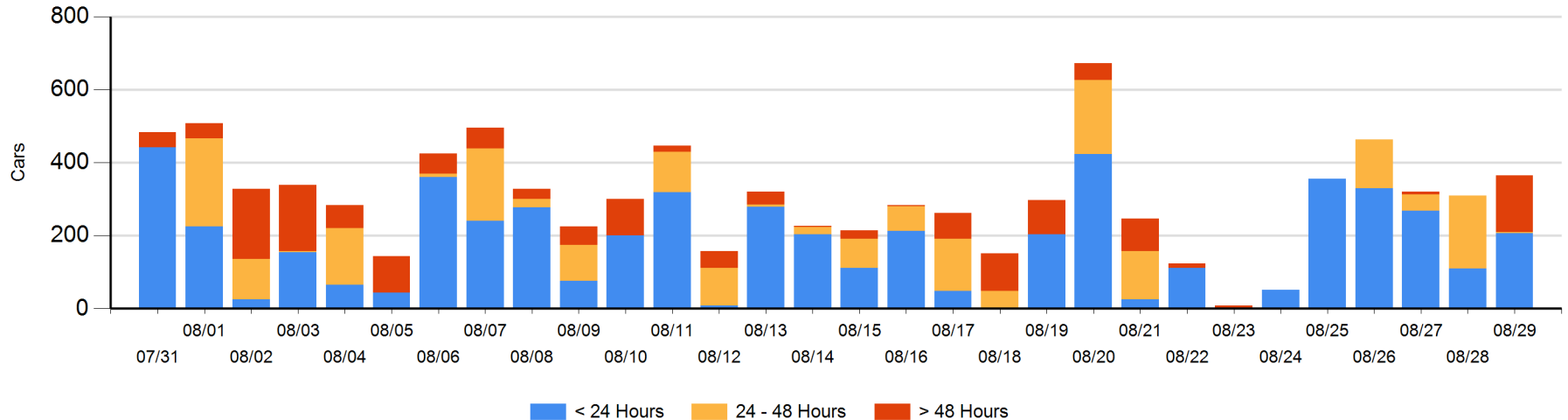
**Today**

|    | < 24 Hrs | 24 - 48 Hrs | > 48-72 Hrs | > 72 Hrs | Total On Hand |
|----|----------|-------------|-------------|----------|---------------|
| CN |          |             |             |          | 0             |
| CP | 207      | 2           | 156         |          | 365           |

**Change in Last 24 Hours**

|    | < 24 Hrs | 24-48 Hrs | 48 - 72 Hrs | > 72 Hrs |
|----|----------|-----------|-------------|----------|
| CN | -108     |           |             |          |
| CP | 205      | -197      | 156         |          |

**Loaded Cars on Hand Thunder Bay Waiting for Placement - Last 30 Days All Railways**



## Measurement Definitions

|                                 |   |
|---------------------------------|---|
| Loads on Wheels                 | <p>Count of loaded rail cars including all rail cars that have been released loaded at origin and have not been reported by the railway as unloaded at destination.</p> <p>Counts include all rail cars (hopper cars and boxcars) moving within a pipeline.</p>   |
| Loads Not Moving                | <p>Loaded rail cars for which the railways have not reported a movement event for 48 hours or more whether the rail car is at origin, enroute or at destination.</p>  |
| Port Unloads                    | <p>Count of rail cars reported by railways as unloaded at the western port destinations of Vancouver, Prince Rupert and Thunder Bay.</p> <p>Unload counts include all rail cars (hopper cars and boxcars) unloaded by all receivers including major port terminals, transloaders and other receivers.</p>   |
| Cars Arrived                    | <p>Count of rail cars reported as arrived at the destination railway terminal.</p>  |
| Cars Received in Interchange    | <p>Count of rail cars received in interchange by each railway within a destination railway terminal. Interchange activity is tracked for the Vancouver and Thunder Bay pipelines as applicable.</p>   |
| Cars Delivered in Interchange   | <p>Count of rail cars delivered in interchange by each railway within a destination railway terminal. Interchange activity is tracked for the Vancouver and Thunder Bay pipelines as applicable.</p>  |
| Cars Placed for Unloading       | <p>Count of rail cars reported by the railways as placed loaded at the receiver's facility for unloading.</p>   |
| Loads on Wheels at Destination  | <p>Count of rail cars that remain under load within the destination railway terminal including rail cars that have been reported as placed for unloading but not yet reported as unloaded.</p>  |
| Waiting Placement for Unloading | <p>Count of rail cars that have been reported as arrived at the destination railway terminal but not reported as placed for unloading by the railway.</p> <p>For the Ports of Vancouver, Prince Rupert and Thunder Bay the count of rail cars waiting placement for unloading is categorized by age – i.e. the elapsed time from arrival at destination to the current report date.</p> |