

## SPEED READ

- Loads on wheels fell overnight, reflecting a decline in CN volumes offset by higher CP volumes. On a net basis, volumes fell due to reduced volumes across all corridors other than Thunder Bay.
- Network fluidity improved overnight, led by a decline in idle car counts on both CN and CP by 34% (-418) and 19% (-327), respectively. The total count of cars for 4+ days on both railways declined 32% (-277) overnight and have now decreased for the eighth consecutive day - now at 576 cars.
- One day in Week 18 unloads now ahead of prior week's performance by more than 300 unloads, marking improved week over week performance at Vancouver and Prince Rupert offset by reduced unloads at Thunder Bay.

---

## Loads on Wheels

- Loads on wheels fell 3% (-334) overnight, due to lower volumes on CN offset by higher volumes on CP - combined total at 12,195 and 8% above the trailing 30-day average.
- On a net basis, the decline in loads on wheels reflects reduced volumes across all corridors other than Thunder Bay.
- CN volumes fell 6% (-358) overnight, with reduced volumes across all corridors. System wide CN loads on wheels currently at 6,138 and 4% above the trailing 30-day average.
- CP volumes increased 2% (+138) overnight, driven by an increase in volumes across all corridors other than E. Canada. CP system wide loads on wheels now at 5,990, the highest seen in the last 30 days, and 14% above the trailing 30-day average.
- Vancouver now at 6,303, fell slightly by 1% (-77) overnight and have now decreased for the third consecutive day, now 10% above the trailing 30-day average.
- The Prince Rupert pipeline presently at 1,504, declined for the third consecutive day, down 8% (-130) overnight, and 14% below the trailing 30-day average.
- Thunder Bay volumes increased slightly by 1% (+31) overnight - now at 2,973 and 18% above the trailing 30-day average, with 71% of traffic moving on CP.

## Hopper Car Rationing

- CN cancelled 529 hopper car orders for week 16 and has cancelled an estimated 90% of orders originally placed by shippers for week 17 as it attempts to recover from the 8 day labour disruption. No hopper cars were rationed or cancelled by CP in week 16.

## Loads Not Moving

- **The count of cars not moving for 48+ hours fell 26% (-745) overnight, marking reduced counts on both CN and CP. Idle car counts presently at 2,163 and 27% below the trailing 30-day average.**
- CN
  - **The count of idle cars for 48+ hours declined 34% (-418) overnight and have now decreased for the eighth consecutive day - now at 797 cars.**
  - The number of cars idle for 4+ days fell 45% (-261) overnight and have now decreased for the eighth consecutive day - now at 314 cars.
  - The count of cars not moving for 7+ days fell for the seventh consecutive day, down 52% (-201) overnight - presently at 188 cars.
  - Vancouver represents 27% of all idle cars.
  - In total 28% of all idle cars are dwelling at origin locations.
- CP
  - **CP idle car counts for 48+ hours declined 19% (-327) overnight - now at 1,366 cars.**

- The number of cars idle for 4+ days declined 6% (-16) overnight and have now decreased for the third consecutive day - now at 262 cars.
- The number of cars idle for 7+ days increased 129% (+53) overnight - currently at 94 cars.
- Vancouver accounts for 28% of all idle cars.
- In total 73% of all idle cars are dwelling at origin locations.

### **Port Performance**

- CN and CP reported a total of 1,392 cars unloaded at the three major ports, 12% above the trailing 30-day average. One day in Week 18 unloads now ahead of last week's pace by more than 300 unloads, marking higher unloads at Vancouver and Prince Rupert offset by reduced unloads at Thunder Bay.
- Vancouver
  - 762 unloads reported by CN and CP at the Port of Vancouver; CN - 322 and CP - 440. One day in Week 18 unloads are tracking ahead of last week's performance by 250 unloads.
  - There are more than 1,350 cars on site at Vancouver with more than 700 cars arriving at the port in the last 24 hours.
  - CN and CP have nearly 1,250 cars in British Columbia en route to Vancouver, with nearly 850 cars at Kamloops and west, and 72% of traffic moving on CN.
- Prince Rupert
  - Prince Rupert reported 229 unloads, now ahead of last week's unloads after one day by more than 100 unloads.
  - Loads on wheels remain above 1,000 cars - currently at 1,504 cars.
  - There are 450 cars west of Jasper en route to Prince Rupert.
  - There are 150 cars on site at Prince Rupert with around 250 cars arriving at the port in the last 24 hours.
- Thunder Bay
  - 401 unloads were reported at Thunder Bay yesterday. One day in Week 18 unloads are tracking behind last week's pace by 50 unloads.
  - There are more than 1,200 cars on site at Thunder Bay with 350 cars arriving at the port in the prior 24 hours.
  - There are more than 400 cars en route to Thunder Bay from Winnipeg and east.

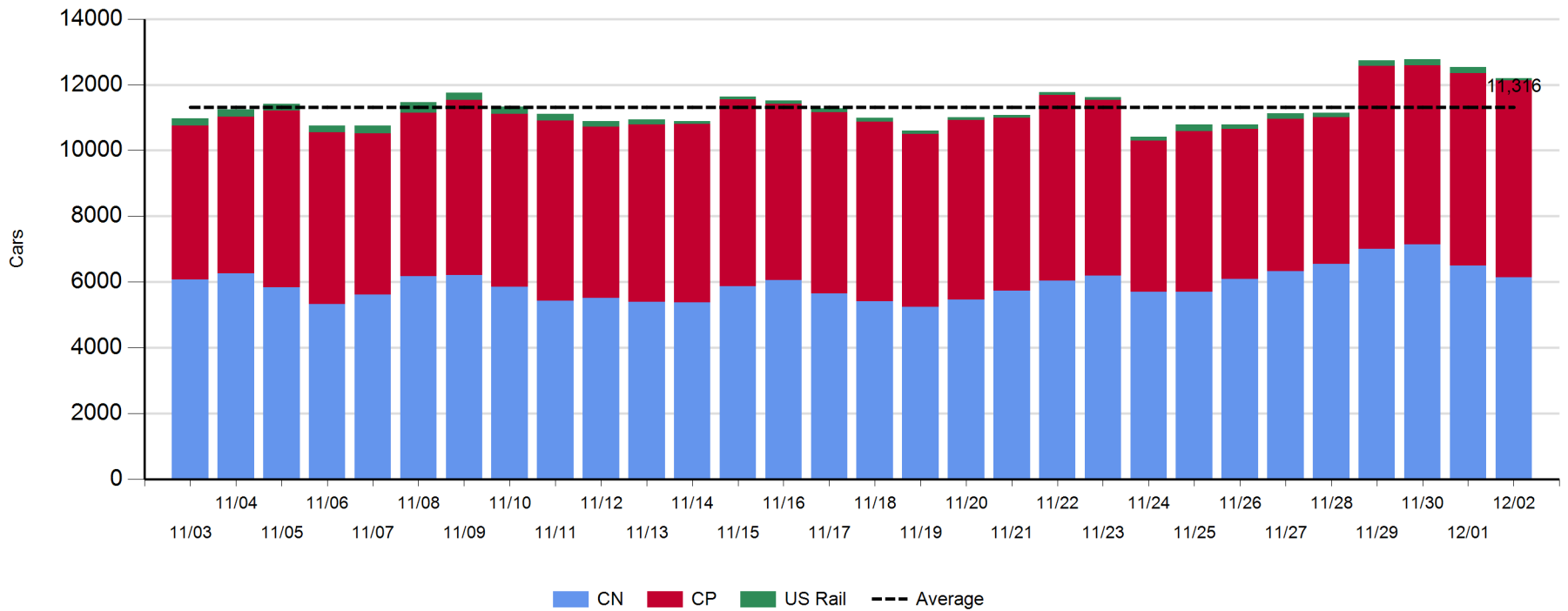
**Daily Loads on Wheels - 12/2/2019**

	E Canada	Prince Rupert	Thunder Bay	USA/MEX	Vancouver	Total
CN	897	1,504	850	103	2,784	6,138
CP	35		2,123	322	3,510	5,990
Short Line					9	9
US Rail				58		58
	932	1,504	2,973	483	6,303	12,195

**Change in Loads on Wheels - Prior 24 Hours**

	E Canada	Prince Rupert	Thunder Bay	USA/MEX	Vancouver	Total
CN	-62	-130	-93	-1	-72	-358
CP	0		124	10	4	138
Short Line					-9	-9
US Rail				-105		-105
	-62	-130	31	-96	-77	-334

**Loads on Wheels - Prior 30 Days**

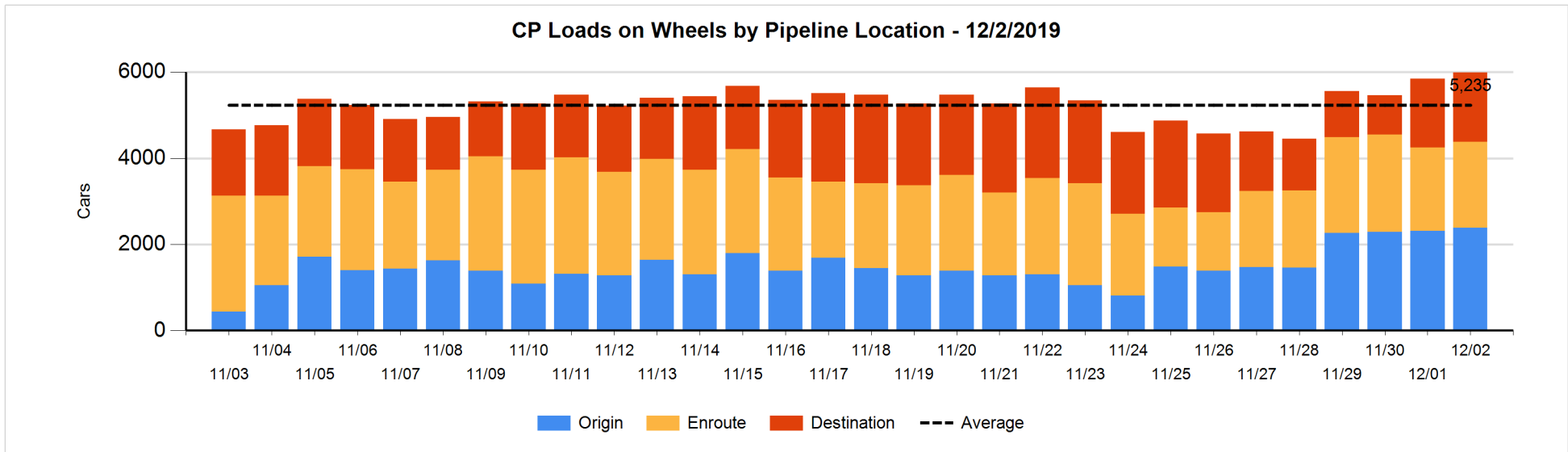
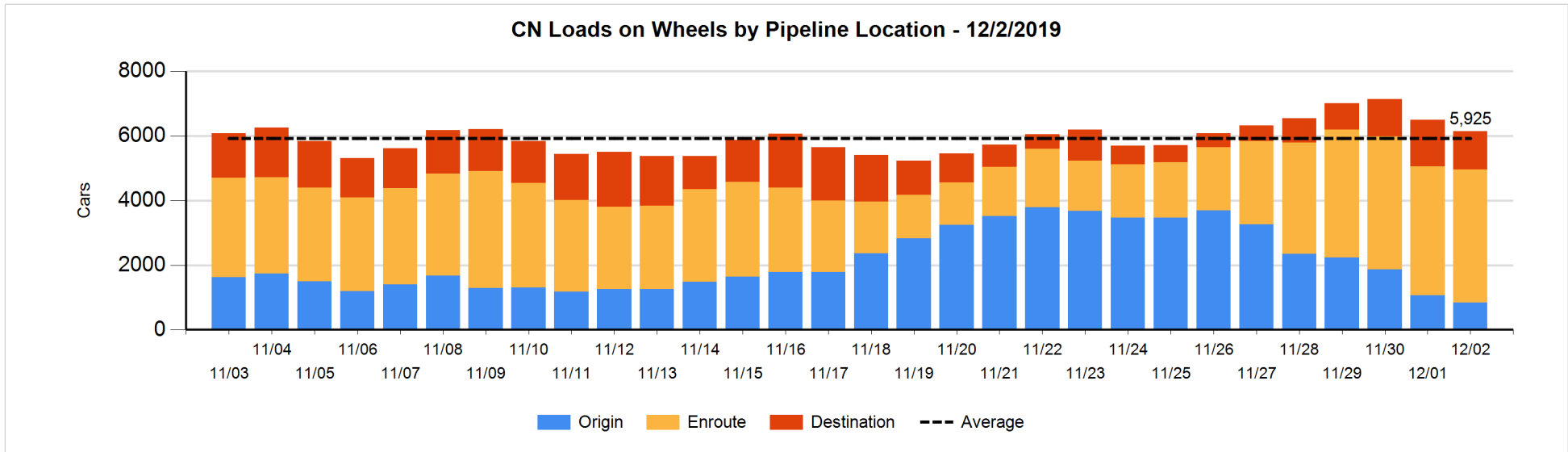


**Daily Loads on Wheels By Pipeline Location - 12/2/2019**

	E Canada	Prince Rupert	Thunder Bay	USA/MEX	Vancouver	Total
CN						
Origin	156	199	100	19	372	846
Enroute	688	1,162	248	83	1,936	4,117
Destination	53	143	502	1	476	1,175
	897	1,504	850	103	2,784	6,138
CP						
Origin	4		1,016	161	1,205	2,386
Enroute	31		384	161	1,415	1,991
Destination			723		890	1,613
	35		2,123	322	3,510	5,990
US Rail / Short Line						
Origin						
Enroute				23		23
Destination				35	9	44
				58	9	67

**Change in Daily Loads on Wheels By Pipeline Location - Prior 24 Hours**

	E Canada	Prince Rupert	Thunder Bay	USA/MEX	Vancouver	Total
CN						
Origin	143	-374	100	7	-96	-220
Enroute	-10	193	-121	-4	63	121
Destination	-195	51	-72	-4	-39	-259
	-62	-130	-93	-1	-72	-358
CP						
Origin	1		193	-19	-100	75
Enroute	-1		-87	29	112	53
Destination			18		-8	10
	0		124	10	4	138
US Rail / Short Line						
Origin						
Enroute				-5		-5
Destination				-100	-9	-109
				-105	-9	-114

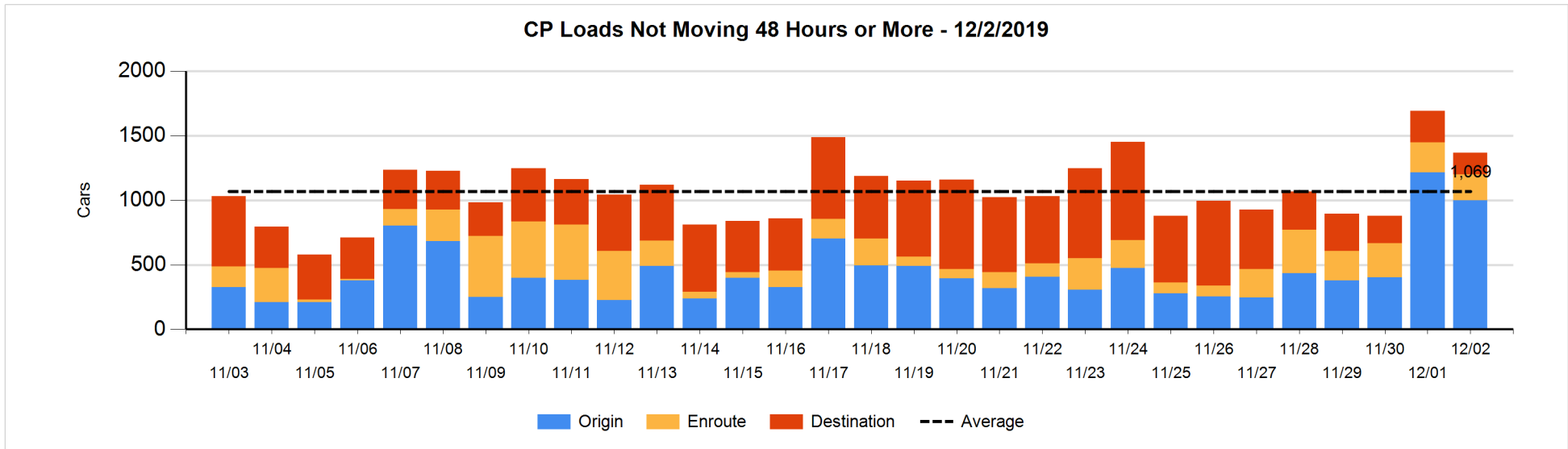
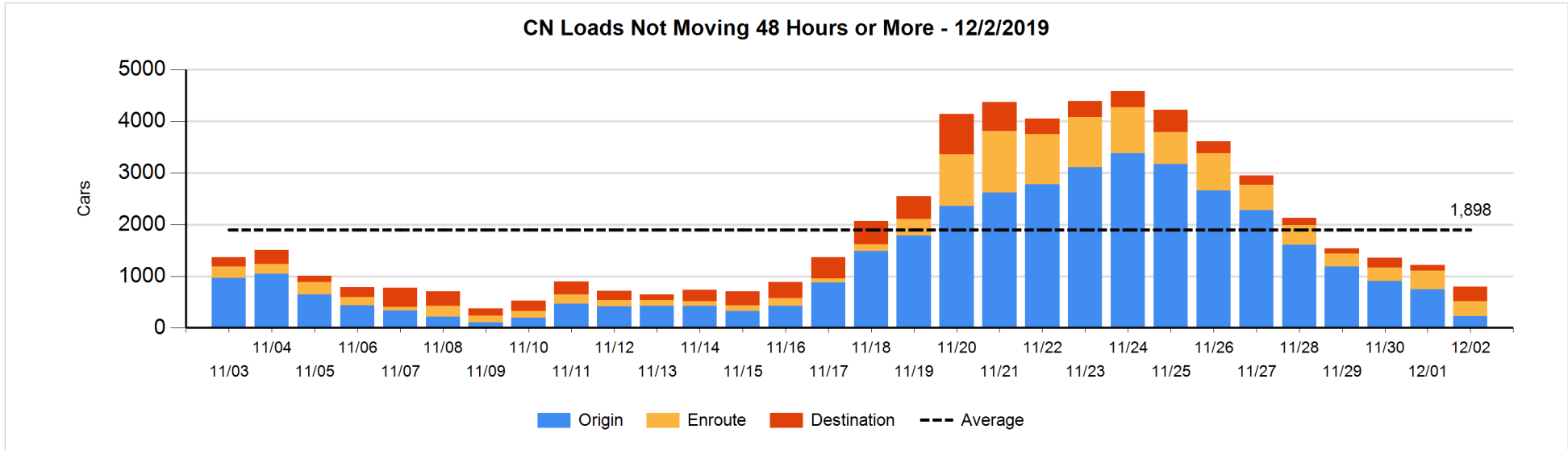


**Loads Not Moving 48 Hours or More - 12/2/2019**

	E Canada	Prince Rupert	Thunder Bay	USA/MEX	Vancouver	Total
<b>CN</b>						
Origin	2	100		2	121	225
Enroute	200	3	1	7	81	292
Destination	17	4	246	1	12	280
	219	107	247	10	214	797
<b>CP</b>						
Origin	3		551	155	291	1000
Enroute	13		106	29	52	200
Destination			121		45	166
	16		778	184	388	1366
<b>US Rail / Short Line</b>						
Origin						
Enroute				9		9
Destination				28	3	31
				37	3	40

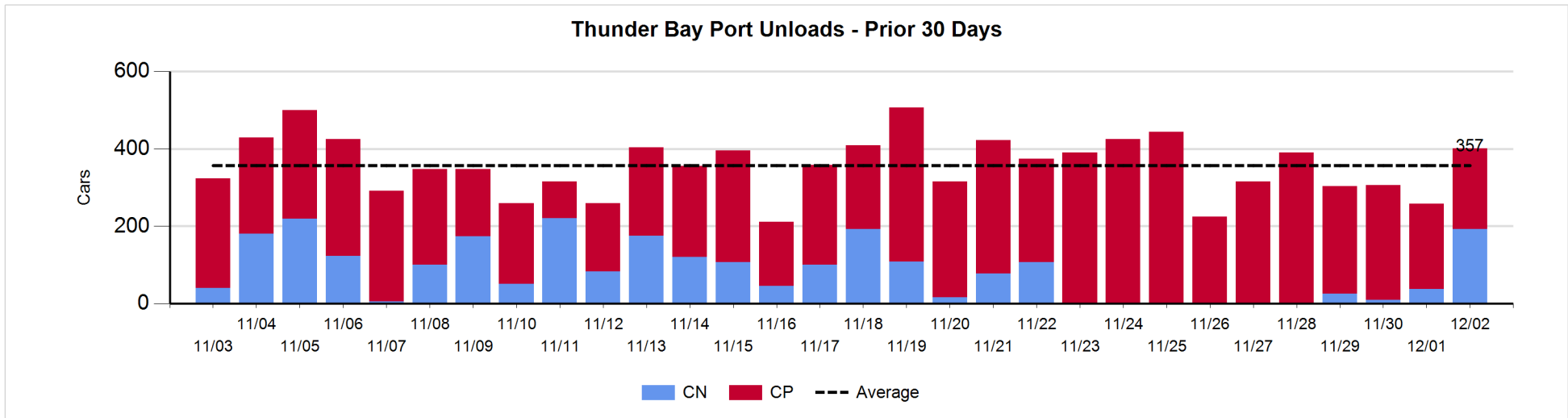
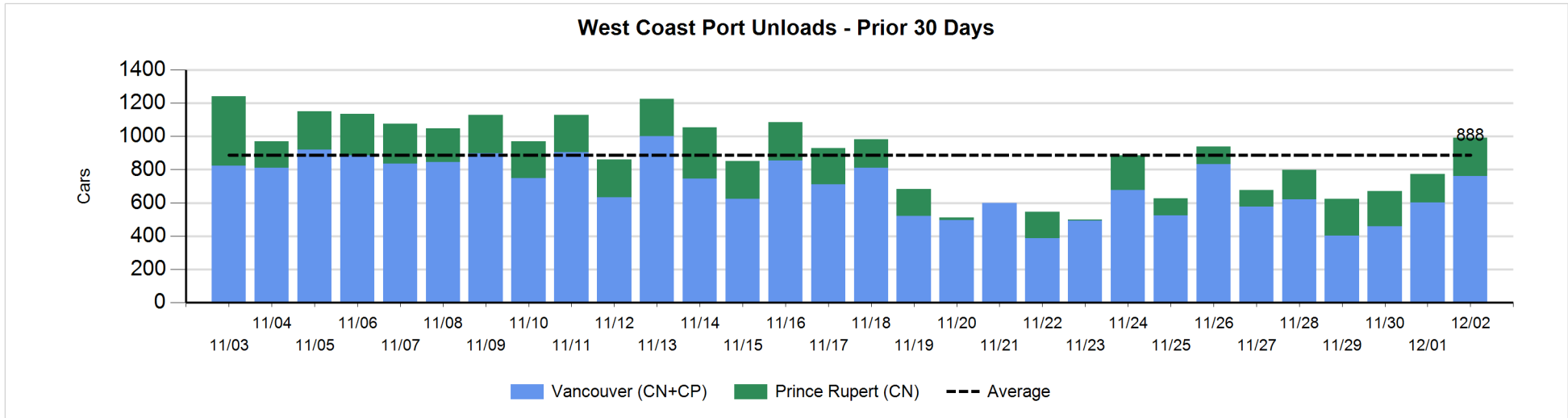
**Change in Loads Not Moving 48 Hours or More - 12/2/2019**

	E Canada	Prince Rupert	Thunder Bay	USA/MEX	Vancouver	Total
<b>CN</b>						
Origin	0	-270		-8	-238	-516
Enroute	-76	-49	1	3	44	-77
Destination	-45	0	227	-4	-3	175
	-121	-319	228	-9	-197	-418
<b>CP</b>						
Origin	0		219	-25	-411	-217
Enroute	3		49	-1	-81	-30
Destination			-21		-59	-80
	3		247	-26	-551	-327
<b>US Rail / Short Line</b>						
Origin						
Enroute				0		0
Destination				-100	-10	-110
				-100	-10	-110



Port Unloads - 12/2/2019

	Prince Rupert	Vancouver	West Coast Total	Thunder Bay	Total
CN	229	322	551	193	744
CP		440	440	208	648
	229	762	991	401	1,392





**Port Terminal Status**

**Vancouver**

Daily Activity for 12/2/2019

	Cars Arrived	Cars Received in Interchange	Cars Delivered in Interchange	Cars Placed for Unloading	Loads on Wheels at Destination As of 12/2/2019
CN	252	111	195	423	476
CP	463	195	111	315	891
SRY	1			11	9

**Port Unloads**

	12/02	12/01	Week To Date	Last Week
CN	322	309	322	1,401
CP	440	293	440	2,617
SRY	10	3	10	70

**Age Profile of Loaded Cars Waiting Placement for Unloading**

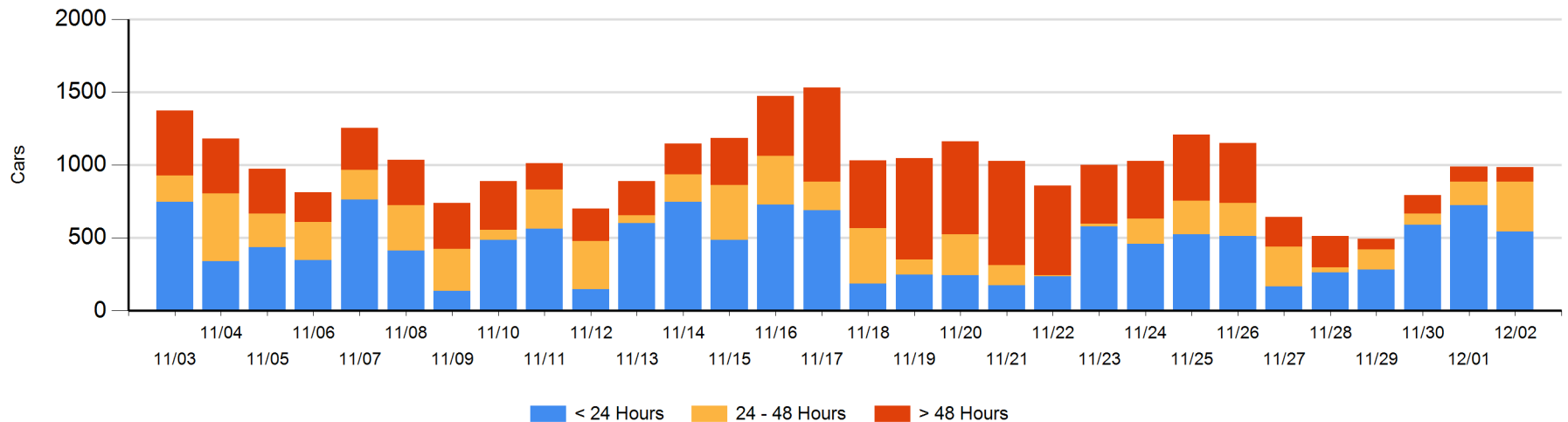
**Today**

	< 24 Hrs	24 - 48 Hrs	> 48-72 Hrs	> 72 Hrs	Total On Hand
CN	193	154	36	20	403
CP	352	186	19	24	581
SRY					0

**Change in Last 24 Hours**

	< 24 Hrs	24-48 Hrs	48 - 72 Hrs	> 72 Hrs
CN	-12	34	29	4
CP	-169	146	-46	9
SRY				

**Loaded Cars on Hand Vancouver Waiting for Placement - Last 30 Days All Railways**



**Port Terminal Status**

**Prince Rupert**

Daily Activity for 12/2/2019

	Cars Arrived	Cars Received in Interchange	Cars Delivered in Interchange	Cars Placed for Unloading	Loads on Wheels at Destination As of 12/2/2019
CN	239			239	143

**Port Unloads**

	12/02	12/01	Week To Date	Last Week
CN	229	171	229	1,092

**Age Profile of Loaded Cars Waiting Placement for Unloading**

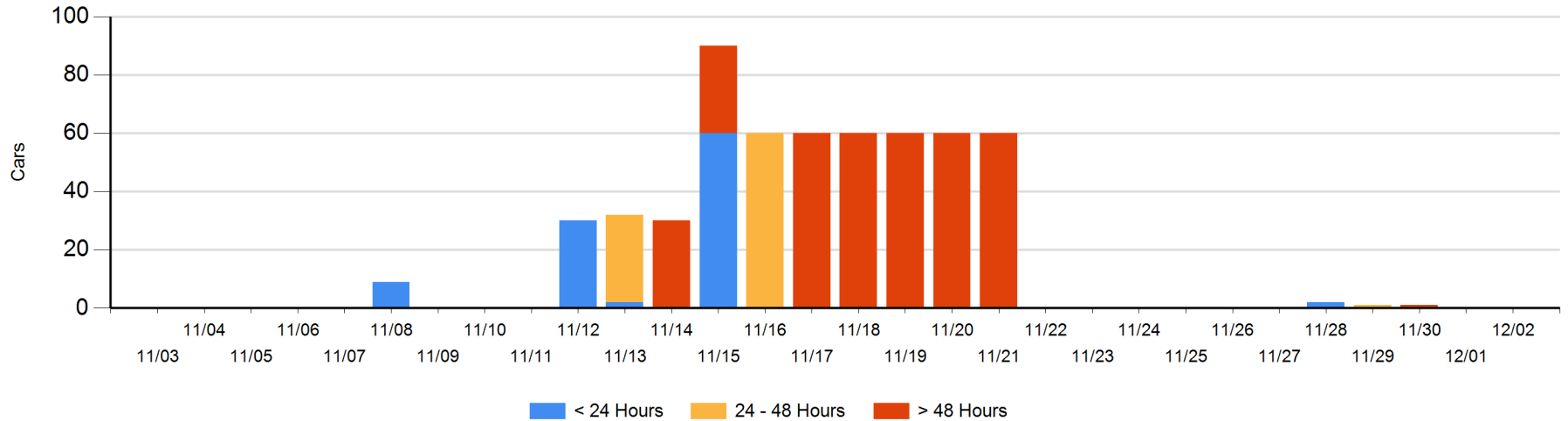
**Today**

	< 24 Hrs	24 - 48 Hrs	> 48-72 Hrs	> 72 Hrs	Total On Hand
CN					0

**Change in Last 24 Hours**

	< 24 Hrs	24-48 Hrs	48 - 72 Hrs	> 72 Hrs
CN				

Loaded Cars on Hand Prince Rupert Waiting for Placement - Last 30 Days All Railways



**Port Terminal Status**

**Thunder Bay**

Daily Activity for 12/2/2019

	Cars Arrived	Cars Received in Interchange	Cars Delivered in Interchange	Cars Placed for Unloading	Loads on Wheels at Destination As of 12/2/2019
CN	121			104	502
CP	225			302	723

**Port Unloads**

	12/02	12/01	Week To Date	Last Week
CN	193	38	193	77
CP	208	220	208	2,165

**Age Profile of Loaded Cars Waiting Placement for Unloading**

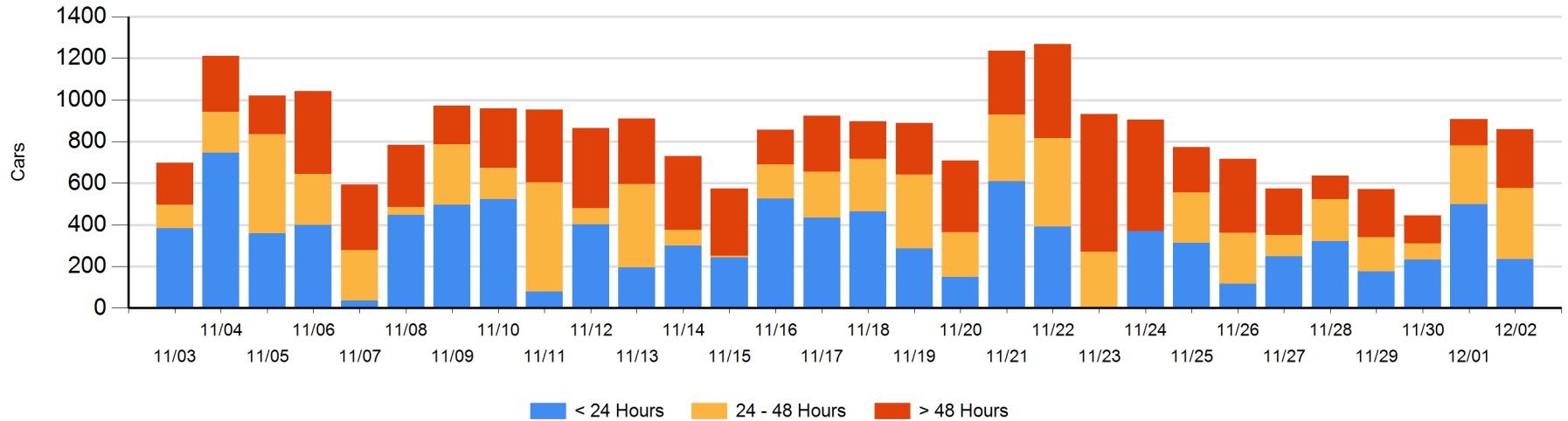
**Today**

	< 24 Hrs	24 - 48 Hrs	> 48-72 Hrs	> 72 Hrs	Total On Hand
CN	121	88	48		257
CP	115	253	134	101	603

**Change in Last 24 Hours**

	< 24 Hrs	24-48 Hrs	48 - 72 Hrs	> 72 Hrs
CN	-71	40	48	
CP	-193	20	84	23

**Loaded Cars on Hand Thunder Bay Waiting for Placement - Last 30 Days All Railways**



## Measurement Definitions

Loads on Wheels	<p>Count of loaded rail cars including all rail cars that have been released loaded at origin and have not been reported by the railway as unloaded at destination.</p> <p>Counts include all rail cars (hopper cars and boxcars) moving within a pipeline.</p>
Loads Not Moving	<p>Loaded rail cars for which the railways have not reported a movement event for 48 hours or more whether the rail car is at origin, enroute or at destination.</p>
Port Unloads	<p>Count of rail cars reported by railways as unloaded at the western port destinations of Vancouver, Prince Rupert and Thunder Bay.</p> <p>Unload counts include all rail cars (hopper cars and boxcars) unloaded by all receivers including major port terminals, transloaders and other receivers.</p>
Cars Arrived	<p>Count of rail cars reported as arrived at the destination railway terminal.</p>
Cars Received in Interchange	<p>Count of rail cars received in interchange by each railway within a destination railway terminal. Interchange activity is tracked for the Vancouver and Thunder Bay pipelines as applicable.</p>
Cars Delivered in Interchange	<p>Count of rail cars delivered in interchange by each railway within a destination railway terminal. Interchange activity is tracked for the Vancouver and Thunder Bay pipelines as applicable.</p>
Cars Placed for Unloading	<p>Count of rail cars reported by the railways as placed loaded at the receiver's facility for unloading.</p>
Loads on Wheels at Destination	<p>Count of rail cars that remain under load within the destination railway terminal including rail cars that have been reported as placed for unloading but not yet reported as unloaded.</p>
Waiting Placement for Unloading	<p>Count of rail cars that have been reported as arrived at the destination railway terminal but not reported as placed for unloading by the railway.</p> <p>For the Ports of Vancouver, Prince Rupert and Thunder Bay the count of rail cars waiting placement for unloading is categorized by age – i.e. the elapsed time from arrival at destination to the current report date.</p>