

## SPEED READ

- Loads on wheels decreased overnight, marking a decline in CN traffic offset by higher CP volumes. On a net basis, volumes fell due to lower volumes across all corridors.
- Network fluidity improved overnight, led by a decline in idle car counts on CN by 26% (-189) offset by an increase in idle car counts on CP by 1% (+12). The total count of cars for 4+ days on both railways increased 4% (+29) overnight - now at 776 cars.
- Three days in Week 18 unloads now ahead of prior week's performance by more than 950 unloads, marking improved week over week performance across all three major ports - Vancouver, Thunder Bay and Prince Rupert.

---

## Loads on Wheels

- Loads on wheels decreased 5% (-569) overnight and have now decreased for the fourth consecutive day, due to lower traffic on CN offset by higher traffic on CP - combined total at 11,323 and in line with the trailing 30-day average.
- On a net basis, the decline in loads on wheels reflects lower volumes across all corridors.
- CN volumes decreased 10% (-586) overnight and have now decreased for the fourth consecutive day, with lower traffic across all corridors other than USA/MEX. System wide CN loads on wheels presently at 5,359 and 9% below the trailing 30-day average.
- CP volumes increased marginally by 1% (+36) overnight, driven by a rise in volumes in the Thunder Bay and E. Canada corridors offset by a decline in volumes in the USA/MEX and Vancouver corridors. CP system wide loads on wheels presently at 5,886 and 11% above the trailing 30-day average.
- Vancouver now at 5,746, decreased 4% (-236) overnight and have now decreased for the fifth consecutive day, now in line with the trailing 30-day average.
- The Prince Rupert pipeline presently at 1,375, the lowest seen in the last 30 days, decreased 3% (-43) overnight and have now decreased for the fifth consecutive day, and 20% below the trailing 30-day average.
- Thunder Bay volumes decreased slightly by 1% (-39) overnight - presently at 2,912 and 14% above the trailing 30-day average, with 74% of traffic moving on CP.

## Hopper Car Rationing

- CN cancelled 529 hopper car orders for week 16 and has cancelled an estimated 90% of orders originally placed by shippers for week 17 as it attempts to recover from the 8 day labour disruption. No hopper cars were rationed or cancelled by CP in week 16

## Loads Not Moving

- **The count of cars not moving for 48+ hours fell 9% (-177) overnight, marking reduced counts on CN offset by higher counts on CP. Idle car counts presently at 1,888 and 36% below the trailing 30-day average.**
- CN
  - **The count of idle cars for 48+ hours decreased 26% (-189) overnight and have now decreased for the tenth consecutive day - currently at 547 cars.**
  - The number of cars idle for 4+ days rose 27% (+81) overnight - presently at 379 cars.
  - The count of cars not moving for 7+ days was unchanged overnight - presently at 143 cars.
  - Vancouver represents 25% of all idle cars.
  - In total 18% of all idle cars are dwelling at origin locations.
- CP
  - **CP idle car counts for 48+ hours rose marginally by 1% (+12) overnight - presently at 1,341 cars.**

- The number of cars idle for 4+ days decreased 12% (-52) overnight - presently at 397 cars.
- The number of cars idle for 7+ days increased 34% (+40) overnight and have now increased for the third consecutive day - presently at 158 cars.
- Vancouver accounts for 56% of all idle cars.
- In total 62% of all idle cars are dwelling at origin locations.

### **Port Performance**

- CN and CP reported a total of 1,437 cars unloaded at the three major ports, 16% above the trailing 30-day average. Three days in Week 18 unloads now ahead of last week's pace by more than 950 unloads, marking higher unloads across all three major ports - Vancouver, Thunder Bay and Prince Rupert.
- Vancouver
  - 775 unloads reported by CN and CP at the Port of Vancouver; CN - 354 and CP - 421. Three days in Week 18 unloads are tracking ahead of last week's performance by 350 unloads.
  - There are 1,500 cars on site at Vancouver with more than 750 cars arriving at the port in the last 24 hours.
  - CN and CP have 1,900 cars in British Columbia en route to Vancouver, with 950 cars at Kamloops and west, and 62% of traffic moving on CP.
- Prince Rupert
  - Prince Rupert reported 246 unloads, now ahead of last week's unloads after three days by 350 unloads.
  - Loads on wheels remain above 1,000 cars - presently at 1,375 cars.
  - There are 700 cars west of Jasper en route to Prince Rupert.
  - There are more than 50 cars on site at Prince Rupert with more than 150 cars arriving at the port in the last 24 hours.
- Thunder Bay
  - 416 unloads were reported at Thunder Bay yesterday. Three days in Week 18 unloads are tracking ahead of last week's pace by 250 unloads.
  - There are more than 950 cars on site at Thunder Bay with less than 350 cars arriving at the port in the prior 24 hours.
  - There are 650 cars en route to Thunder Bay from Winnipeg and east.

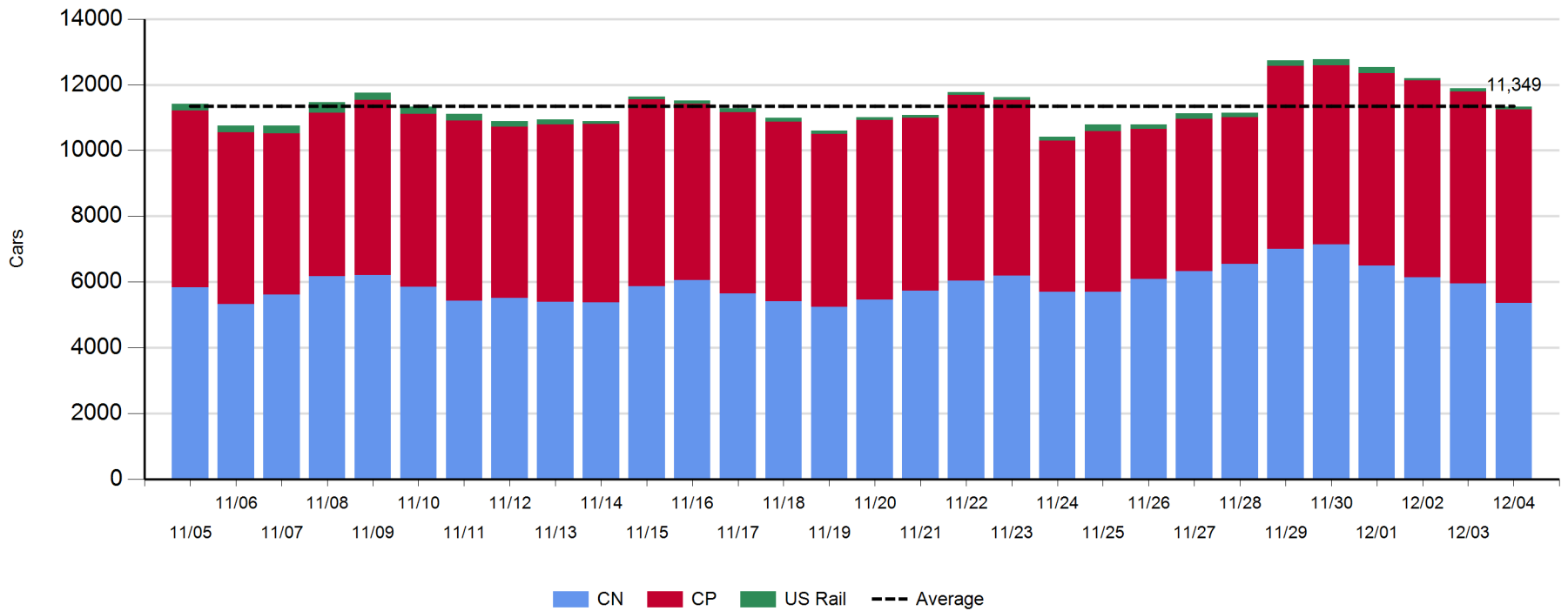
**Daily Loads on Wheels - 12/4/2019**

	E Canada	Prince Rupert	Thunder Bay	USA/MEX	Vancouver	Total
CN	786	1,375	766	159	2,273	5,359
CP	22		2,146	264	3,454	5,886
Short Line	16				19	35
US Rail				43		43
	824	1,375	2,912	466	5,746	11,323

**Change in Loads on Wheels - Prior 24 Hours**

	E Canada	Prince Rupert	Thunder Bay	USA/MEX	Vancouver	Total
CN	-197	-43	-123	12	-235	-586
CP	1		84	-35	-14	36
Short Line	-3				13	10
US Rail				-29		-29
	-199	-43	-39	-52	-236	-569

**Loads on Wheels - Prior 30 Days**



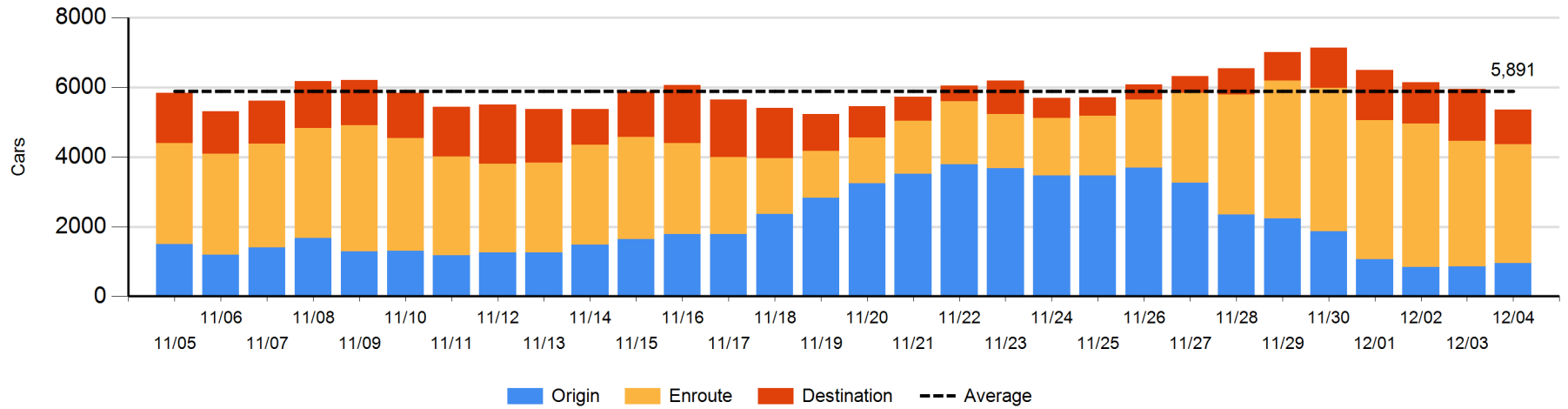
**Daily Loads on Wheels By Pipeline Location - 12/4/2019**

	E Canada	Prince Rupert	Thunder Bay	USA/MEX	Vancouver	Total
CN						
Origin	50	104	301	32	472	959
Enroute	697	1,209	132	96	1,277	3,411
Destination	39	62	333	31	524	989
	786	1,375	766	159	2,273	5,359
CP						
Origin	2		804	31	945	1,782
Enroute	20		702	233	1,549	2,504
Destination			640		960	1,600
	22		2,146	264	3,454	5,886
US Rail / Short Line						
Origin						
Enroute	16			22		38
Destination				21	19	40
	16			43	19	78

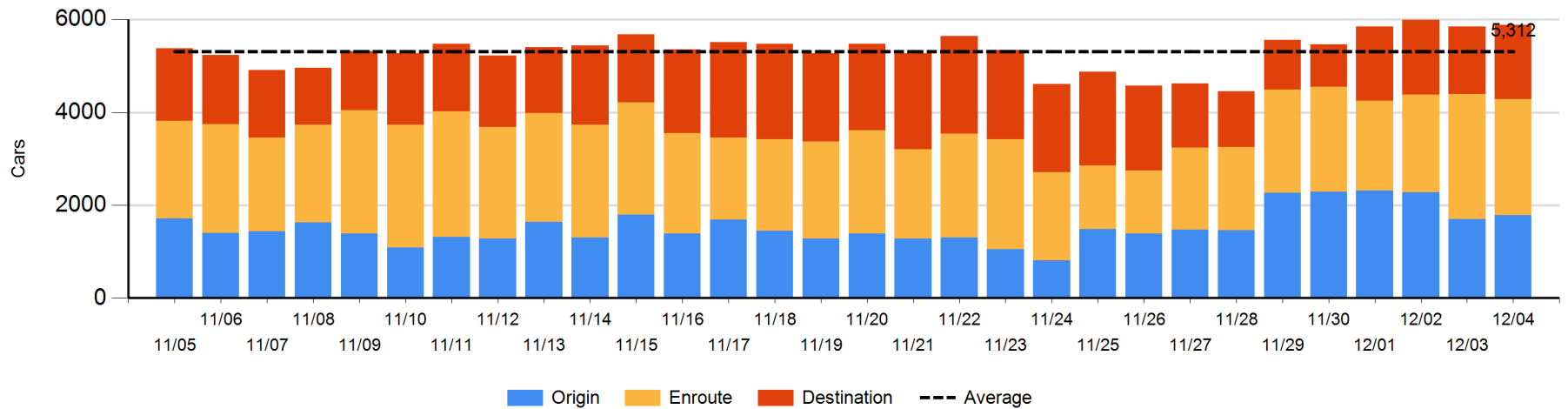
**Change in Daily Loads on Wheels By Pipeline Location - Prior 24 Hours**

	E Canada	Prince Rupert	Thunder Bay	USA/MEX	Vancouver	Total
CN						
Origin	12	-98	147	20	18	99
Enroute	-7	128	0	-38	-273	-190
Destination	-202	-73	-270	30	20	-495
	-197	-43	-123	12	-235	-586
CP						
Origin	-2		68	-9	23	80
Enroute	3		-177	-26	8	-192
Destination			193		-45	148
	1		84	-35	-14	36
US Rail / Short Line						
Origin						
Enroute	0			0		0
Destination	-3			-29	13	-19
	-3			-29	13	-19

**CN Loads on Wheels by Pipeline Location - 12/4/2019**



**CP Loads on Wheels by Pipeline Location - 12/4/2019**

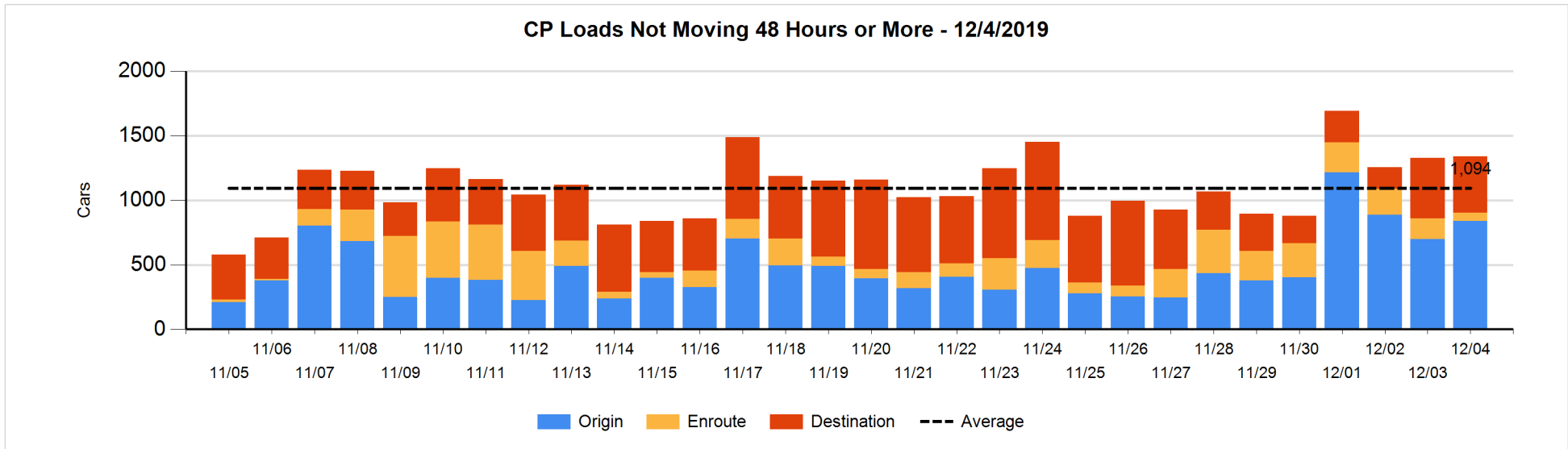
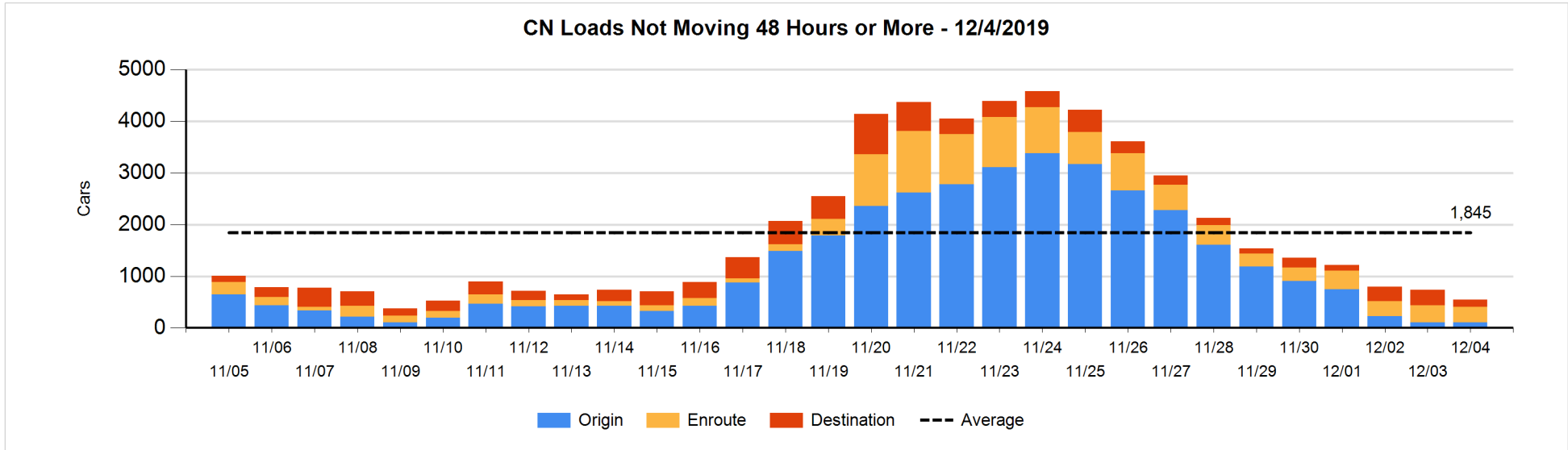


**Loads Not Moving 48 Hours or More - 12/4/2019**

	E Canada	Prince Rupert	Thunder Bay	USA/MEX	Vancouver	Total
<b>CN</b>						
Origin	2				98	100
Enroute	289	2	1	6	9	307
Destination	10	4	97		29	140
	301	6	98	6	136	547
<b>CP</b>						
Origin	1		334		503	838
Enroute	3		24	7	33	67
Destination			223		213	436
	4		581	7	749	1341
<b>US Rail / Short Line</b>						
Origin						
Enroute				6		6
Destination				6	1	7
				12	1	13

**Change in Loads Not Moving 48 Hours or More - 12/4/2019**

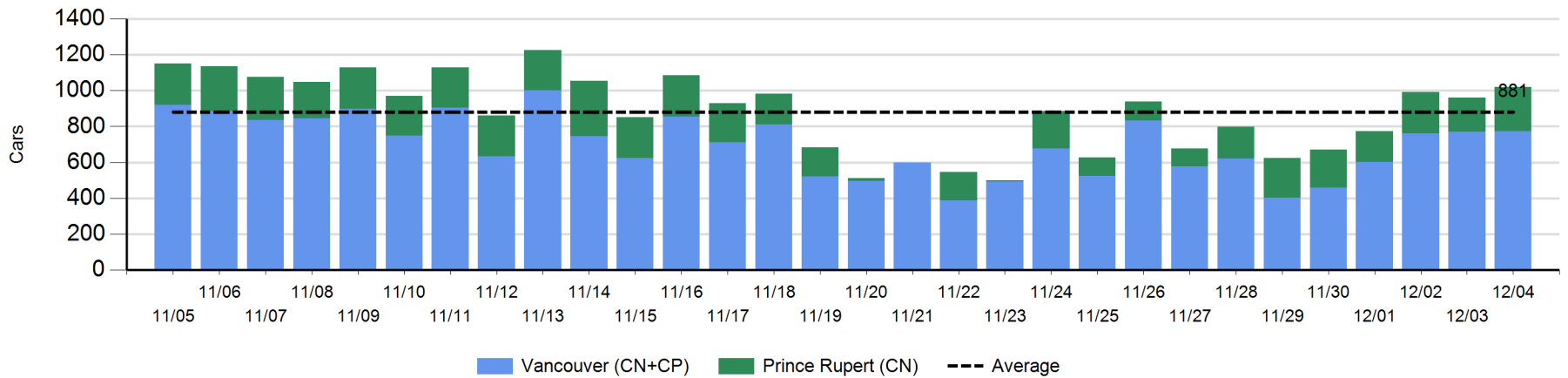
	E Canada	Prince Rupert	Thunder Bay	USA/MEX	Vancouver	Total
<b>CN</b>						
Origin	0				-2	-2
Enroute	45	-68	0	0	-6	-29
Destination	-87	0	-79		8	-158
	-42	-68	-79	0	0	-189
<b>CP</b>						
Origin	-2		58	-33	116	139
Enroute	3		-118	1	22	-92
Destination			-82		47	-35
	1		-142	-32	185	12
<b>US Rail / Short Line</b>						
Origin						
Enroute				-3		-3
Destination				-15	-4	-19
				-18	-4	-22



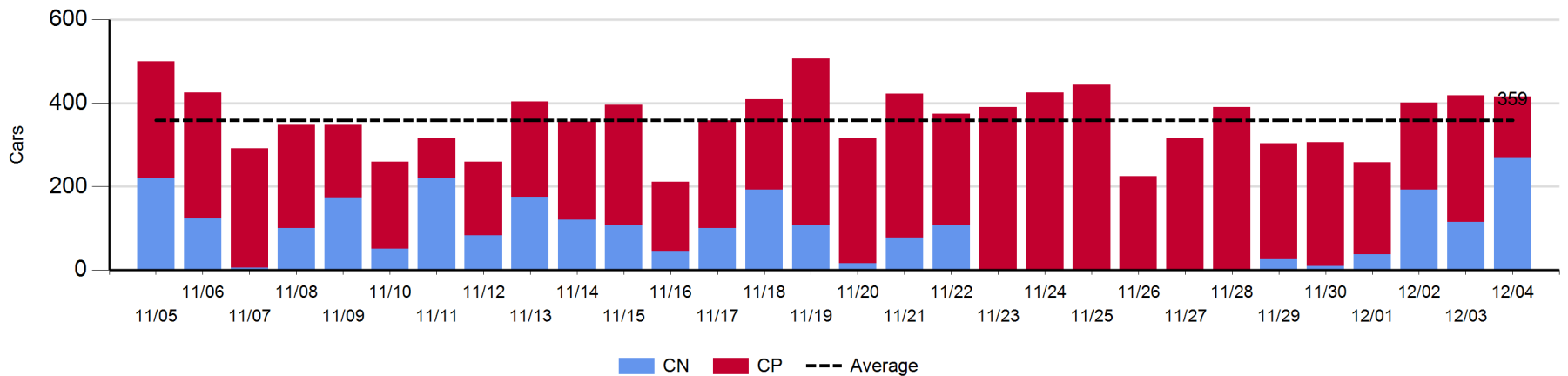
Port Unloads - 12/4/2019

	Prince Rupert	Vancouver	West Coast Total	Thunder Bay	Total
CN	246	354	600	270	870
CP		421	421	146	567
	246	775	1,021	416	1,437

West Coast Port Unloads - Prior 30 Days



Thunder Bay Port Unloads - Prior 30 Days





**Port Terminal Status**

**Vancouver**

Daily Activity for 12/4/2019

	Cars Arrived	Cars Received in Interchange	Cars Delivered in Interchange	Cars Placed for Unloading	Loads on Wheels at Destination As of 12/4/2019
CN	514	87	43	294	524
CP	252	42	121	440	960
SRY	2	35		5	19

**Port Unloads**

	12/04	12/03	Week To Date	Last Week
CN	354	345	1,021	1,401
CP	421	426	1,287	2,617
SRY	5	4	19	70

**Age Profile of Loaded Cars Waiting Placement for Unloading**

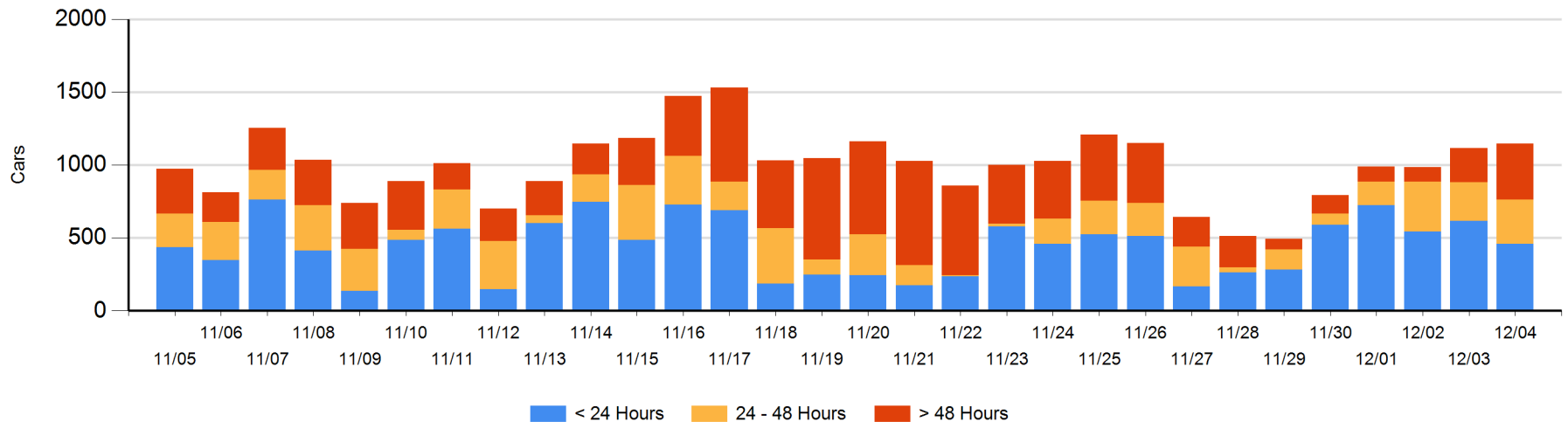
**Today**

	< 24 Hrs	24 - 48 Hrs	> 48-72 Hrs	> 72 Hrs	Total On Hand
CN	364	273	119	70	826
CP	95	32	83	110	320
SRY					0

**Change in Last 24 Hours**

	< 24 Hrs	24-48 Hrs	48 - 72 Hrs	> 72 Hrs
CN	-175	100	23	52
CP	19	-62	5	68
SRY				

**Loaded Cars on Hand Vancouver Waiting for Placement - Last 30 Days All Railways**



**Port Terminal Status**

**Prince Rupert**

Daily Activity for 12/4/2019

	Cars Arrived	Cars Received in Interchange	Cars Delivered in Interchange	Cars Placed for Unloading	Loads on Wheels at Destination As of 12/4/2019
CN	172			172	62

**Port Unloads**

	12/04	12/03	Week To Date	Last Week
CN	246	191	666	1,092

**Age Profile of Loaded Cars Waiting Placement for Unloading**

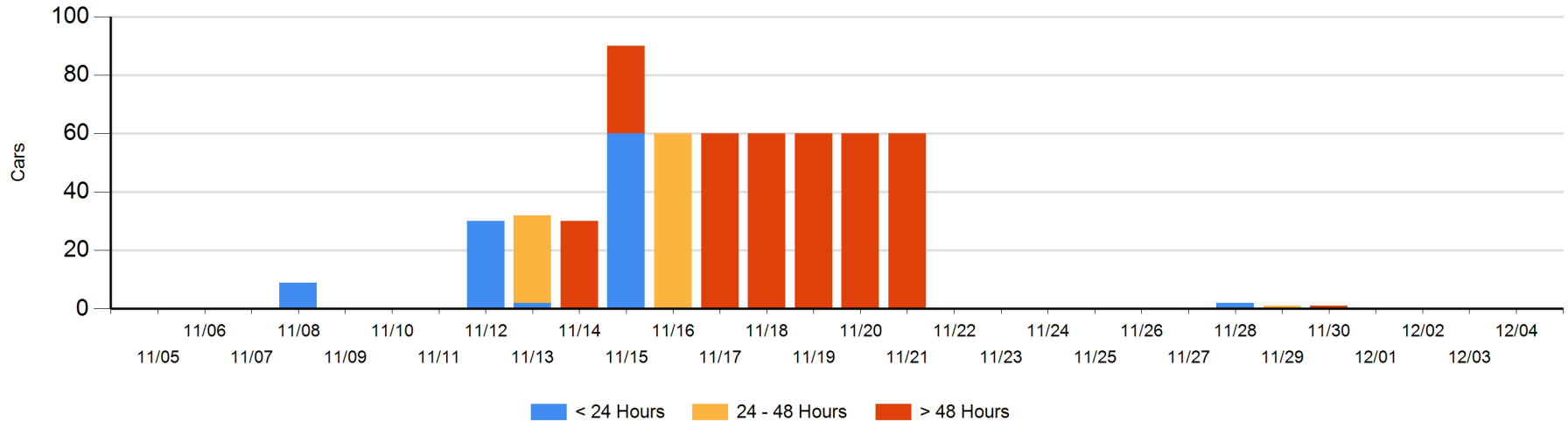
**Today**

	< 24 Hrs	24 - 48 Hrs	> 48-72 Hrs	> 72 Hrs	Total On Hand
CN					0

**Change in Last 24 Hours**

	< 24 Hrs	24-48 Hrs	48 - 72 Hrs	> 72 Hrs
CN				

Loaded Cars on Hand Prince Rupert Waiting for Placement - Last 30 Days All Railways



**Port Terminal Status**

**Thunder Bay**

Daily Activity for 12/4/2019

	Cars Arrived	Cars Received in Interchange	Cars Delivered in Interchange	Cars Placed for Unloading	Loads on Wheels at Destination As of 12/4/2019
CN				143	333
CP	339			198	640

**Port Unloads**

	12/04	12/03	Week To Date	Last Week
CN	270	115	578	77
CP	146	304	658	2,165

**Age Profile of Loaded Cars Waiting Placement for Unloading**

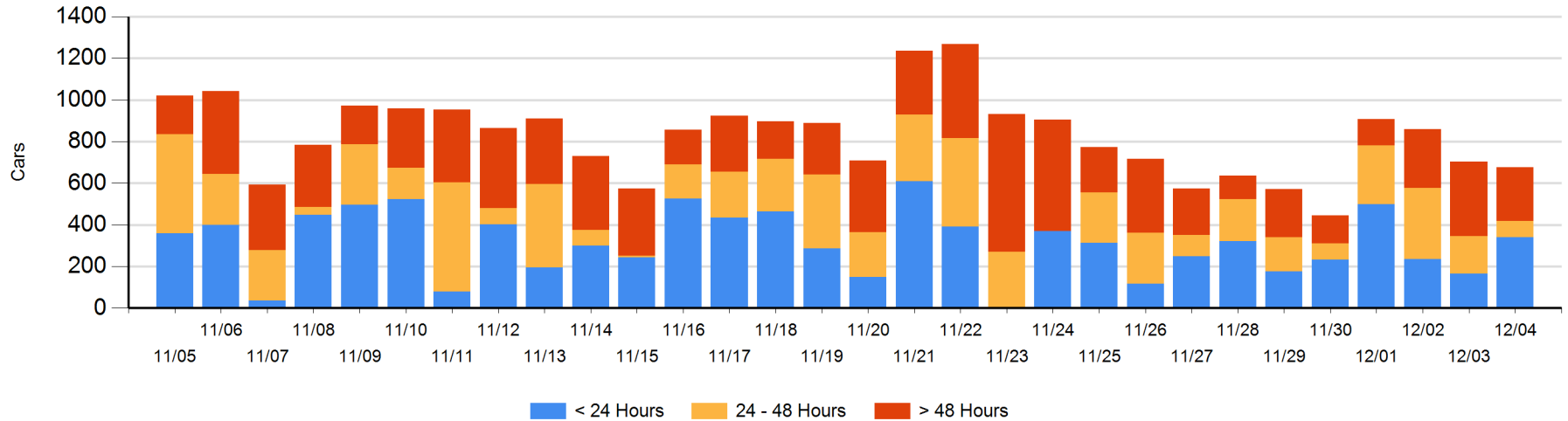
**Today**

	< 24 Hrs	24 - 48 Hrs	> 48-72 Hrs	> 72 Hrs	Total On Hand
CN		54	7	48	109
CP	339	26	88	114	567

**Change in Last 24 Hours**

	< 24 Hrs	24-48 Hrs	48 - 72 Hrs	> 72 Hrs
CN	-140	-10	7	0
CP	313	-89	-97	-11

**Loaded Cars on Hand Thunder Bay Waiting for Placement - Last 30 Days All Railways**



## Measurement Definitions

Loads on Wheels	<p>Count of loaded rail cars including all rail cars that have been released loaded at origin and have not been reported by the railway as unloaded at destination.</p> <p>Counts include all rail cars (hopper cars and boxcars) moving within a pipeline.</p>
Loads Not Moving	<p>Loaded rail cars for which the railways have not reported a movement event for 48 hours or more whether the rail car is at origin, enroute or at destination.</p>
Port Unloads	<p>Count of rail cars reported by railways as unloaded at the western port destinations of Vancouver, Prince Rupert and Thunder Bay.</p> <p>Unload counts include all rail cars (hopper cars and boxcars) unloaded by all receivers including major port terminals, transloaders and other receivers.</p>
Cars Arrived	<p>Count of rail cars reported as arrived at the destination railway terminal.</p>
Cars Received in Interchange	<p>Count of rail cars received in interchange by each railway within a destination railway terminal. Interchange activity is tracked for the Vancouver and Thunder Bay pipelines as applicable.</p>
Cars Delivered in Interchange	<p>Count of rail cars delivered in interchange by each railway within a destination railway terminal. Interchange activity is tracked for the Vancouver and Thunder Bay pipelines as applicable.</p>
Cars Placed for Unloading	<p>Count of rail cars reported by the railways as placed loaded at the receiver's facility for unloading.</p>
Loads on Wheels at Destination	<p>Count of rail cars that remain under load within the destination railway terminal including rail cars that have been reported as placed for unloading but not yet reported as unloaded.</p>
Waiting Placement for Unloading	<p>Count of rail cars that have been reported as arrived at the destination railway terminal but not reported as placed for unloading by the railway.</p> <p>For the Ports of Vancouver, Prince Rupert and Thunder Bay the count of rail cars waiting placement for unloading is categorized by age – i.e. the elapsed time from arrival at destination to the current report date.</p>