

## SPEED READ

- Loads on wheels declined overnight, reflecting a decline in CN volumes offset by slightly higher CP volumes. On a net basis, volumes fell due to reduced traffic in the Vancouver, E. Canada and Prince Rupert corridors offset by higher traffic in the Thunder Bay and USA/MEX corridors.
- Network fluidity improved overnight, led by a decline in idle car counts on CN by 24% (-129) offset by a rise in idle car counts on CP by 7% (+89). The total count of cars for 4+ days on both railways rose for the third consecutive day, up 13% (+103) overnight - now at 880 cars.
- Four days in Week 18 unloads now ahead of prior week's performance by 1,150 unloads, reflecting improved week over week performance across all three major ports.

---

## Loads on Wheels

- Loads on wheels decreased for the fifth consecutive day, down 1% (-170) overnight, due to lower traffic on CN offset by higher volumes on CP - combined total at 11,187 and 1% below the trailing 30-day average.
- On a net basis, the decline in loads on wheels reflects reduced traffic in the Vancouver, E. Canada and Prince Rupert corridors offset by higher traffic in the Thunder Bay and USA/MEX corridors.
- CN volumes decreased for the fifth consecutive day, down 3% (-153) overnight, with lower volumes across all corridors other than Thunder Bay. System wide CN loads on wheels currently at 5,235 and 11% below the trailing 30-day average.
- CP volumes increased marginally by (+13) overnight, driven by an increase in volumes in the USA/MEX and Thunder Bay corridors offset by a decline in volumes in the Vancouver corridor. CP system wide loads on wheels currently at 5,904 and 11% above the trailing 30-day average.
- Vancouver currently at 5,438, declined for the sixth consecutive day, down 5% (-311) overnight, now 5% below the trailing 30-day average.
- The Prince Rupert pipeline currently at 1,362, the lowest seen in the last 30 days, declined for the sixth consecutive day, down 1% (-13) overnight, and 20% below the trailing 30-day average.
- Thunder Bay volumes increased 3% (+99) overnight - currently at 3,013 and 16% above the trailing 30-day average, with 72% of traffic moving on CP.

## Hopper Car Rationing

- CN cancelled more than 4,500 hopper car orders placed by shippers in week 17. No hopper cars were rationed or cancelled by CP in week 17.

## Loads Not Moving

- **The count of cars not moving for 48+ hours fell 2% (-40) overnight, reflecting reduced counts on CN offset by higher counts on CP. Idle car counts currently at 1,850 and 37% below the trailing 30-day average.**
- CN
  - **The count of idle cars for 48+ hours fell 24% (-129) overnight - currently at 418 cars.**
  - The number of cars idle for 4+ days fell 32% (-120) overnight - now at 259 cars.
  - The count of cars not moving for 7+ days rose slightly by 1% (+1) overnight - now at 144 cars.
  - Vancouver represents 31% of all idle cars.
  - In total 0% of all idle cars are dwelling at origin locations.
- CP
  - **CP idle car counts for 48+ hours rose 7% (+89) overnight and have now increased for the third consecutive day - now at 1,432 cars.**
  - The number of cars idle for 4+ days increased 56% (+223) overnight - currently at 621 cars.

- The number of cars idle for 7+ days fell 39% (-61) overnight - currently at 97 cars.
- Vancouver accounts for 58% of all idle cars.
- In total 67% of all idle cars are dwelling at origin locations.

### **Port Performance**

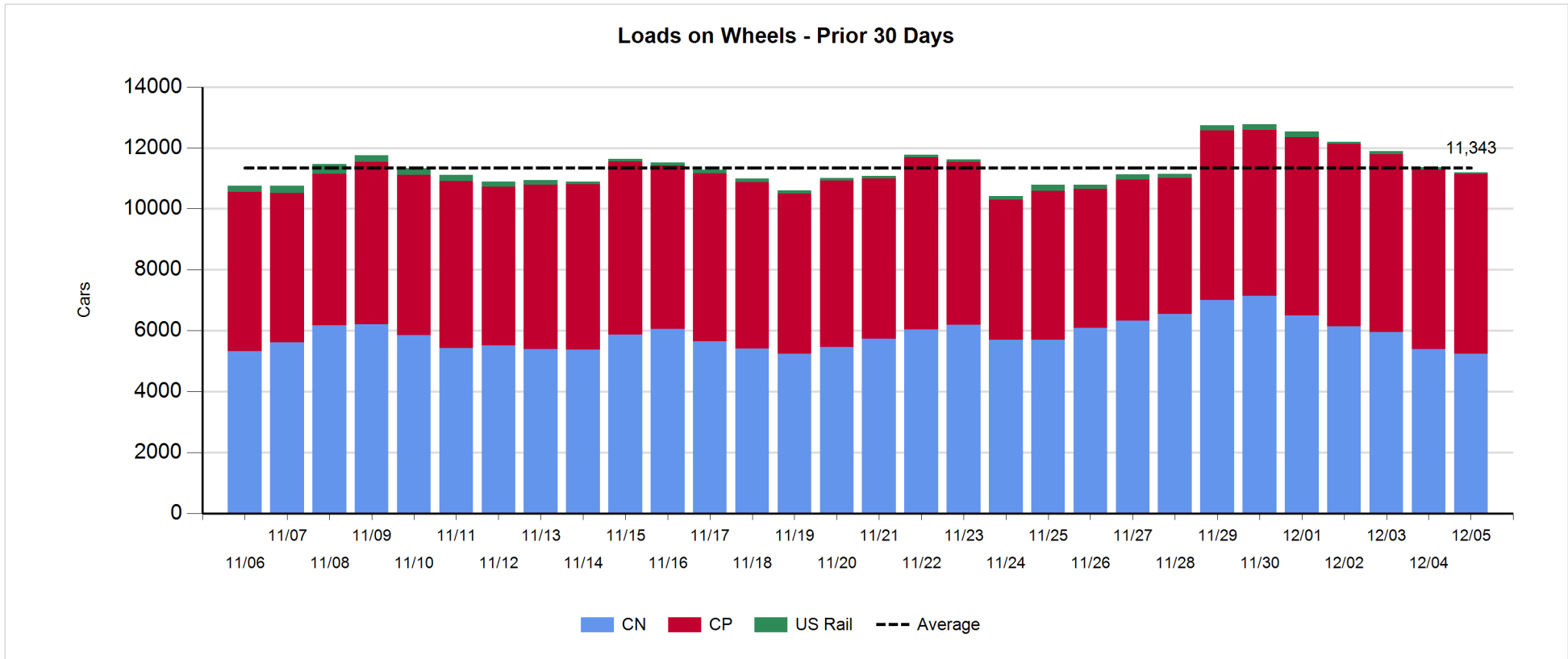
- CN and CP reported a total of 1,370 cars unloaded at the three major ports, 11% above the trailing 30-day average. Four days in Week 18 unloads now ahead of last week's pace by 1,150 unloads, reflecting higher unloads across all three major ports - Vancouver, Thunder Bay and Prince Rupert.
- Vancouver
  - 700 unloads reported by CN and CP at the Port of Vancouver; CN - 328 and CP - 372. Four days in Week 18 unloads are tracking ahead of last week's performance by about 450 unloads.
  - There are 1,750 cars on site at Vancouver with 950 cars arriving at the port in the last 24 hours.
  - CN and CP have 1,450 cars in British Columbia en route to Vancouver, with more than 850 cars at Kamloops and west, and 63% of traffic moving on CP.
- Prince Rupert
  - Prince Rupert reported 219 unloads, now ahead of last week's unloads after four days by 400 unloads.
  - Loads on wheels remains above 1,000 cars - currently at 1,362 cars.
  - There are 300 cars west of Jasper en route to Prince Rupert.
  - There are 350 cars on site at Prince Rupert with 500 cars arriving at the port in the last 24 hours.
- Thunder Bay
  - 451 unloads were reported at Thunder Bay yesterday. Four days in Week 18 unloads are tracking ahead of last week's pace by more than 300 unloads.
  - There are 1,150 cars on site at Thunder Bay with nearly 650 cars arriving at the port in the prior 24 hours.
  - There are nearly 250 cars en route to Thunder Bay from Winnipeg and east.

**Daily Loads on Wheels - 12/5/2019**

	E Canada	Prince Rupert	Thunder Bay	USA/MEX	Vancouver	Total
CN	796	1,362	842	149	2,086	5,235
CP	22		2,171	373	3,338	5,904
Short Line					14	14
US Rail				34		34
	818	1,362	3,013	556	5,438	11,187

**Change in Loads on Wheels - Prior 24 Hours**

	E Canada	Prince Rupert	Thunder Bay	USA/MEX	Vancouver	Total
CN	-19	-13	76	-10	-187	-153
CP	0		23	109	-119	13
Short Line	-16				-5	-21
US Rail				-9		-9
	-35	-13	99	90	-311	-170

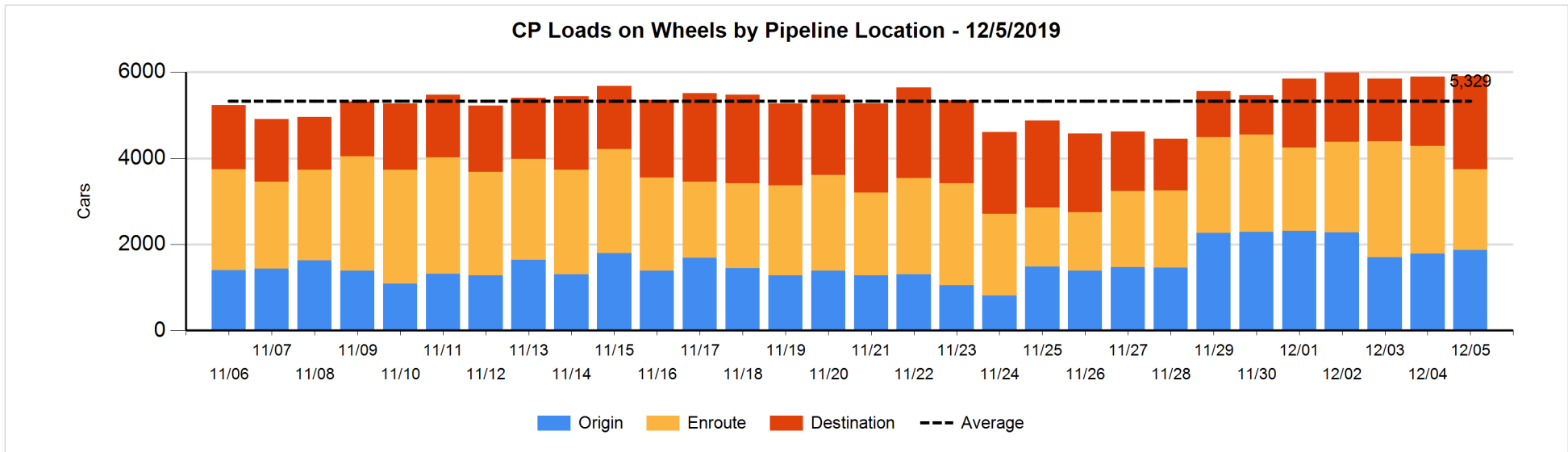
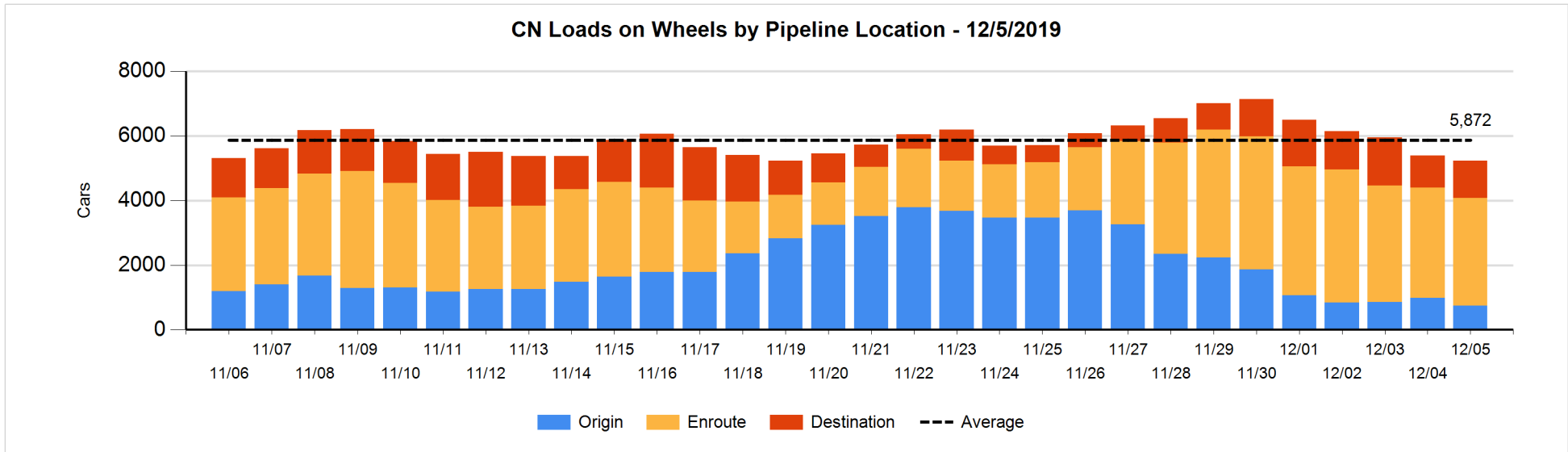


**Daily Loads on Wheels By Pipeline Location - 12/5/2019**

	E Canada	Prince Rupert	Thunder Bay	USA/MEX	Vancouver	Total
CN						
Origin	20	103	305	31	277	736
Enroute	739	908	308	102	1,286	3,343
Destination	37	351	229	16	523	1,156
	796	1,362	842	149	2,086	5,235
CP						
Origin	2		892	139	836	1,869
Enroute	18		351	214	1,290	1,873
Destination	2		928	20	1,212	2,162
	22		2,171	373	3,338	5,904
US Rail / Short Line						
Origin						
Enroute				23		23
Destination				11	14	25
				34	14	48

**Change in Daily Loads on Wheels By Pipeline Location - Prior 24 Hours**

	E Canada	Prince Rupert	Thunder Bay	USA/MEX	Vancouver	Total
CN						
Origin	-59	-1	4	-1	-195	-252
Enroute	42	-301	176	6	9	-68
Destination	-2	289	-104	-15	-1	167
	-19	-13	76	-10	-187	-153
CP						
Origin	0		88	108	-111	85
Enroute	-2		-353	-19	-259	-633
Destination	2		288	20	251	561
	0		23	109	-119	13
US Rail / Short Line						
Origin						
Enroute	-16			1		-15
Destination				-10	-5	-15
	-16			-9	-5	-30

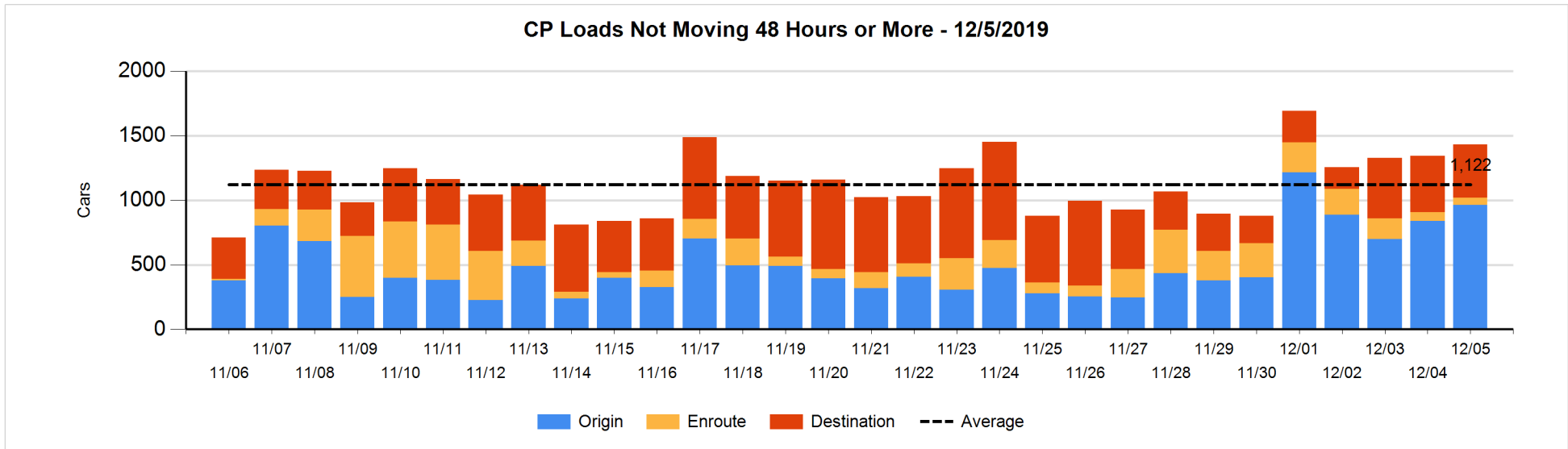
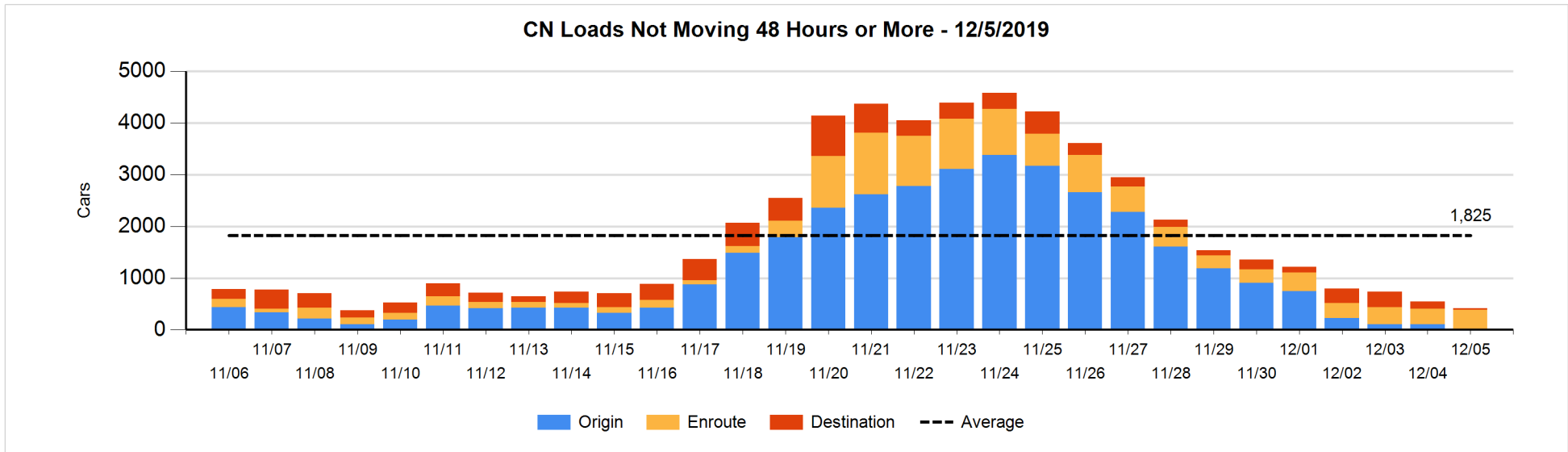


**Loads Not Moving 48 Hours or More - 12/5/2019**

	E Canada	Prince Rupert	Thunder Bay	USA/MEX	Vancouver	Total
<b>CN</b>						
Origin	2					2
Enroute	247	8	2	6	117	380
Destination	14	4	7		11	36
	263	12	9	6	128	418
<b>CP</b>						
Origin	1		417		547	965
Enroute	1		5		50	56
Destination			183		228	411
	2		605		825	1432
<b>US Rail / Short Line</b>						
Origin						
Enroute				7		7
Destination				8	1	9
				15	1	16

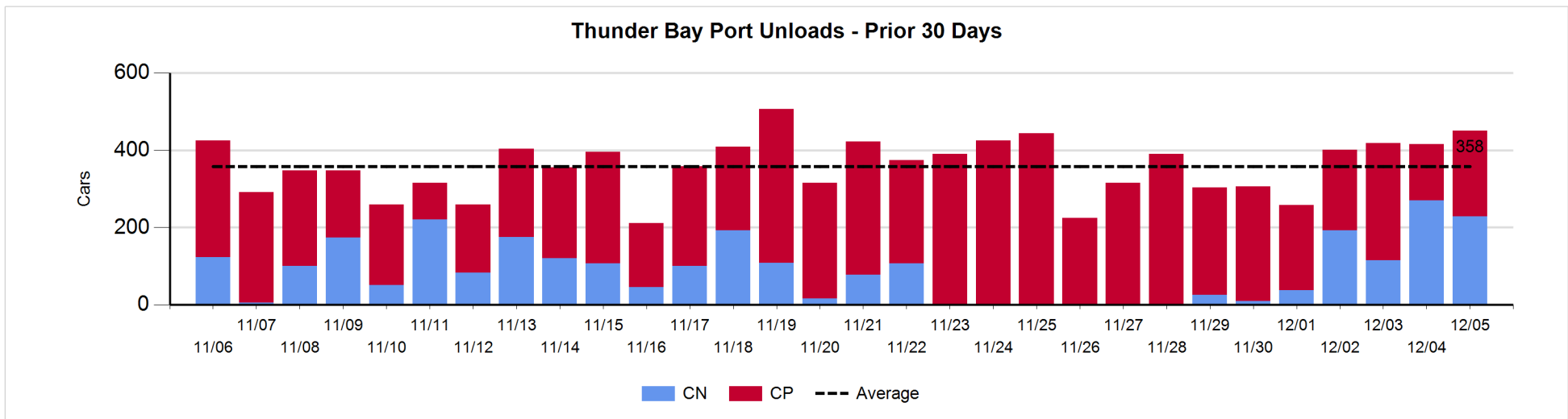
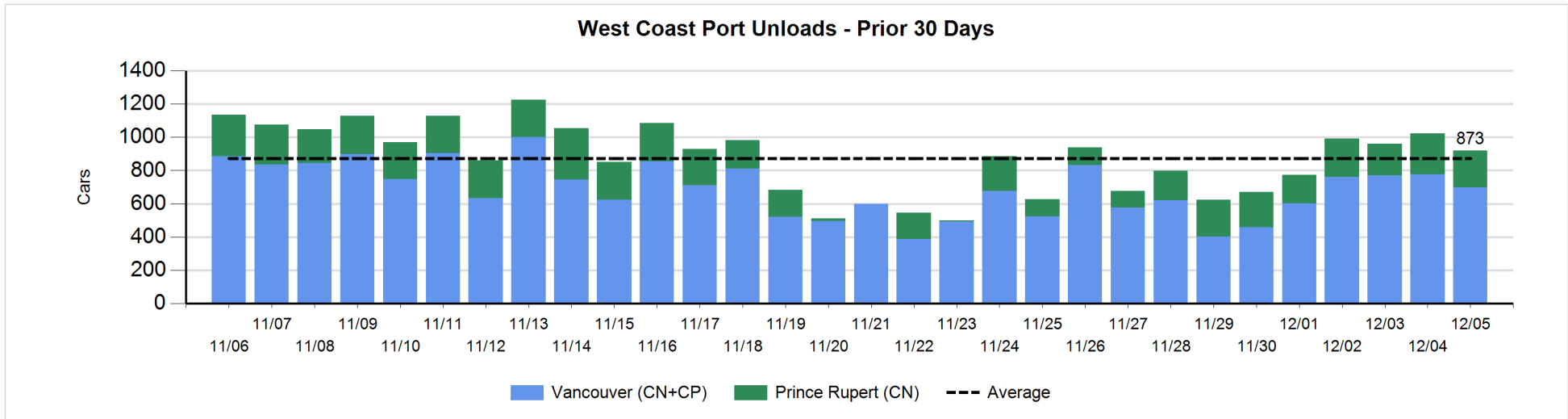
**Change in Loads Not Moving 48 Hours or More - 12/5/2019**

	E Canada	Prince Rupert	Thunder Bay	USA/MEX	Vancouver	Total
<b>CN</b>						
Origin	0				-98	-98
Enroute	-42	6	1	0	108	73
Destination	4	0	-90		-18	-104
	-38	6	-89	0	-8	-129
<b>CP</b>						
Origin	0		83		42	125
Enroute	-2		-19	-6	17	-10
Destination			-40		14	-26
	-2		24	-6	73	89
<b>US Rail / Short Line</b>						
Origin						
Enroute				1		1
Destination				2	0	2
				3	0	3



Port Unloads - 12/5/2019

	Prince Rupert	Vancouver	West Coast Total	Thunder Bay	Total
CN	219	328	547	229	776
CP		372	372	222	594
	219	700	919	451	1,370





**Port Terminal Status**

**Vancouver**

Daily Activity for 12/5/2019

	Cars Arrived	Cars Received in Interchange	Cars Delivered in Interchange	Cars Placed for Unloading	Loads on Wheels at Destination As of 12/5/2019
CN	462	11	146	377	523
CP	493	146	25	471	1,212
SRY		14		10	14

**Port Unloads**

	12/05	12/04	Week To Date	Last Week
CN	328	355	1,350	1,401
CP	372	421	1,659	2,617
SRY	10	5	29	70

**Age Profile of Loaded Cars Waiting Placement for Unloading**

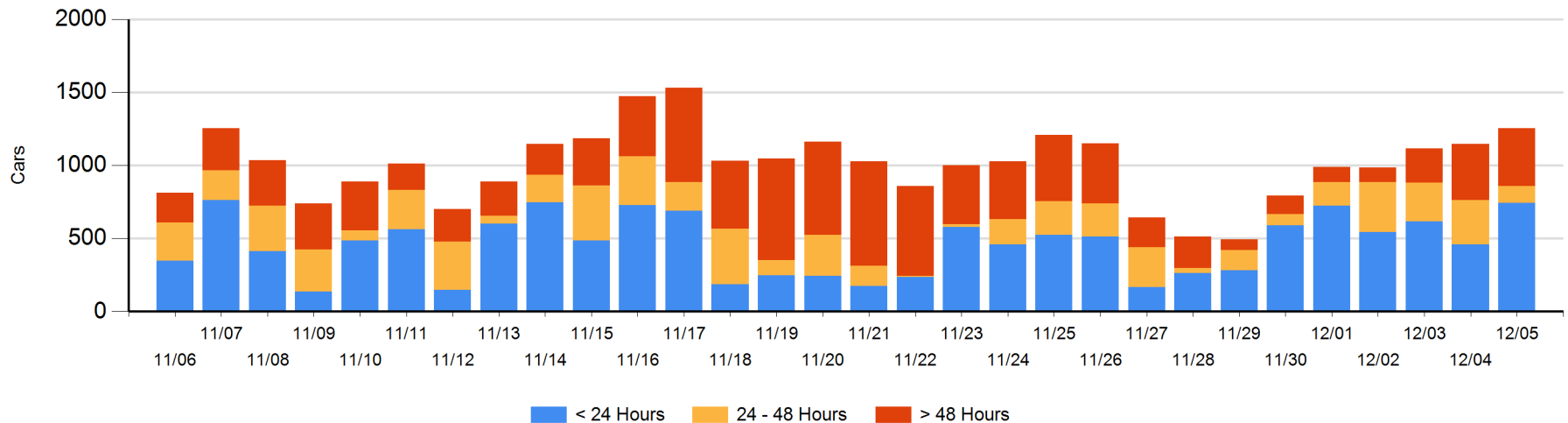
**Today**

	< 24 Hrs	24 - 48 Hrs	> 48-72 Hrs	> 72 Hrs	Total On Hand
CN	360	76	73	146	655
CP	384	39	19	156	598
SRY					0

**Change in Last 24 Hours**

	< 24 Hrs	24-48 Hrs	48 - 72 Hrs	> 72 Hrs
CN	-5	-197	-46	76
CP	290	7	-64	46
SRY				

**Loaded Cars on Hand Vancouver Waiting for Placement - Last 30 Days All Railways**



**Port Terminal Status**

**Prince Rupert**

Daily Activity for 12/5/2019

	Cars Arrived	Cars Received in Interchange	Cars Delivered in Interchange	Cars Placed for Unloading	Loads on Wheels at Destination As of 12/5/2019
CN	508			200	351

**Port Unloads**

	12/05	12/04	Week To Date	Last Week
CN	219	246	885	1,092

**Age Profile of Loaded Cars Waiting Placement for Unloading**

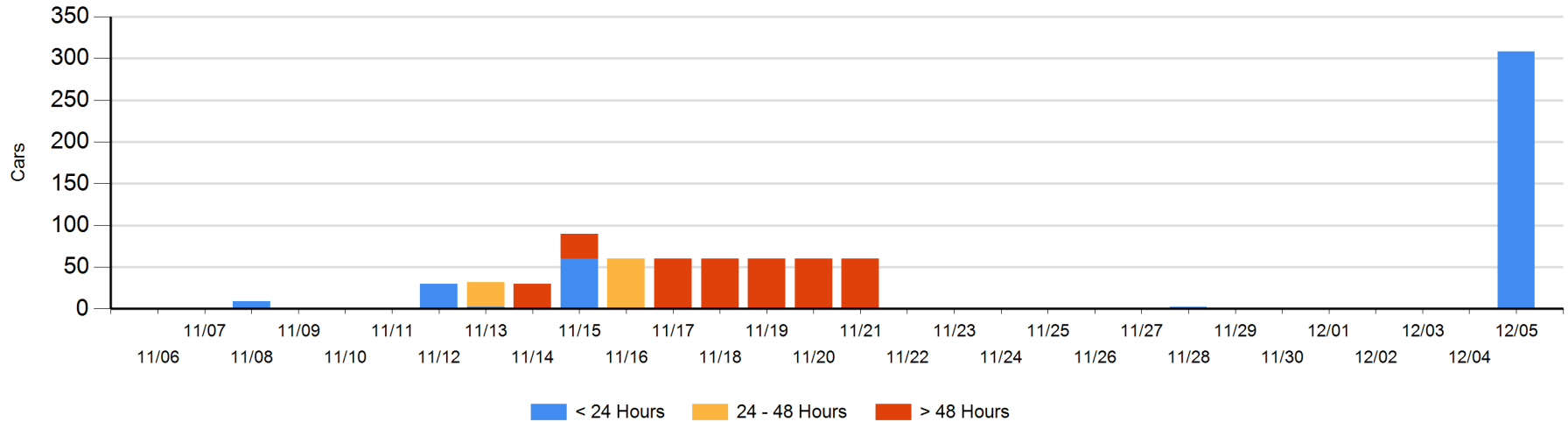
**Today**

	< 24 Hrs	24 - 48 Hrs	> 48-72 Hrs	> 72 Hrs	Total On Hand
CN	308				308

**Change in Last 24 Hours**

	< 24 Hrs	24-48 Hrs	48 - 72 Hrs	> 72 Hrs
CN	308			

Loaded Cars on Hand Prince Rupert Waiting for Placement - Last 30 Days All Railways



**Port Terminal Status**

**Thunder Bay**

Daily Activity for 12/5/2019

	Cars Arrived	Cars Received in Interchange	Cars Delivered in Interchange	Cars Placed for Unloading	Loads on Wheels at Destination As of 12/5/2019
CN	125			93	229
CP	509			178	928

**Port Unloads**

	12/05	12/04	Week To Date	Last Week
CN	229	270	807	77
CP	222	146	880	2,165

**Age Profile of Loaded Cars Waiting Placement for Unloading**

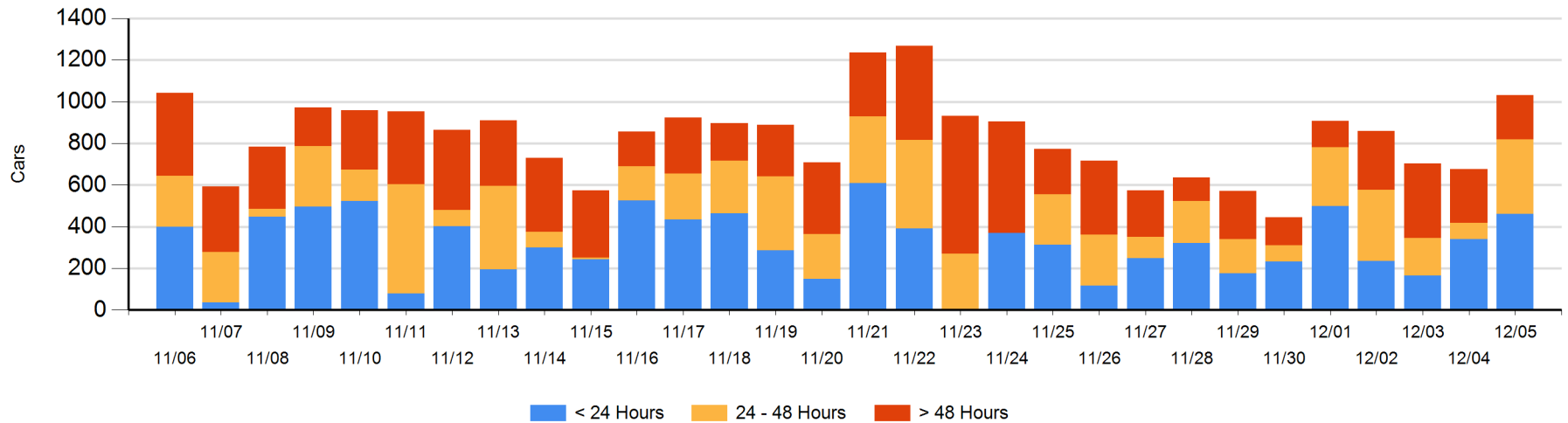
**Today**

	< 24 Hrs	24 - 48 Hrs	> 48-72 Hrs	> 72 Hrs	Total On Hand
CN	100		34	7	141
CP	361	359	26	145	891

**Change in Last 24 Hours**

	< 24 Hrs	24-48 Hrs	48 - 72 Hrs	> 72 Hrs
CN	100	-54	27	-41
CP	22	333	-62	31

**Loaded Cars on Hand Thunder Bay Waiting for Placement - Last 30 Days All Railways**



## Measurement Definitions

Loads on Wheels	<p>Count of loaded rail cars including all rail cars that have been released loaded at origin and have not been reported by the railway as unloaded at destination.</p> <p>Counts include all rail cars (hopper cars and boxcars) moving within a pipeline.</p>
Loads Not Moving	<p>Loaded rail cars for which the railways have not reported a movement event for 48 hours or more whether the rail car is at origin, enroute or at destination.</p>
Port Unloads	<p>Count of rail cars reported by railways as unloaded at the western port destinations of Vancouver, Prince Rupert and Thunder Bay.</p> <p>Unload counts include all rail cars (hopper cars and boxcars) unloaded by all receivers including major port terminals, transloaders and other receivers.</p>
Cars Arrived	<p>Count of rail cars reported as arrived at the destination railway terminal.</p>
Cars Received in Interchange	<p>Count of rail cars received in interchange by each railway within a destination railway terminal. Interchange activity is tracked for the Vancouver and Thunder Bay pipelines as applicable.</p>
Cars Delivered in Interchange	<p>Count of rail cars delivered in interchange by each railway within a destination railway terminal. Interchange activity is tracked for the Vancouver and Thunder Bay pipelines as applicable.</p>
Cars Placed for Unloading	<p>Count of rail cars reported by the railways as placed loaded at the receiver's facility for unloading.</p>
Loads on Wheels at Destination	<p>Count of rail cars that remain under load within the destination railway terminal including rail cars that have been reported as placed for unloading but not yet reported as unloaded.</p>
Waiting Placement for Unloading	<p>Count of rail cars that have been reported as arrived at the destination railway terminal but not reported as placed for unloading by the railway.</p> <p>For the Ports of Vancouver, Prince Rupert and Thunder Bay the count of rail cars waiting placement for unloading is categorized by age – i.e. the elapsed time from arrival at destination to the current report date.</p>