

SPEED READ

- Loads on wheels fell overnight, reflecting a decline in CN volumes offset by higher CP volumes. On a net basis, volumes fell due to reduced volumes in the Vancouver, Prince Rupert and E. Canada corridors offset by higher volumes in the Thunder Bay and USA/MEX corridors.
- Network fluidity deteriorated overnight, led by an increase in idle car counts on both CN and CP by 70% (+408) and 37% (+502), respectively. The total count of cars for 4+ days on both railways rose 16% (+94) overnight - currently at 676 cars.
- Week 18 unloads ended ahead of prior week's performance by more than 2,050 unloads, reflecting improved week over week performance across all three major ports - Vancouver, Thunder Bay and Prince Rupert.

=====

Loads on Wheels

- Loads on wheels fell 4% (-424) overnight, due to reduced volumes on CN offset by higher volumes on CP - combined total at 10,940 and 4% below the trailing 30-day average.
- On a net basis, the decline in loads on wheels indicates reduced volumes in the Vancouver, Prince Rupert and E. Canada corridors offset by higher volumes in the Thunder Bay and USA/MEX corridors.
- CN volumes fell 11% (-652) overnight, with reduced traffic across all corridors other than Thunder Bay. System wide CN loads on wheels presently at 5,341 and 9% below the trailing 30-day average.
- CP volumes rose marginally by 1% (+54) overnight, driven by an increase in volumes in the Vancouver corridor offset by a decline in volumes in the Thunder Bay and USA/MEX corridors. CP system wide loads on wheels currently at 5,309 and 1% below the trailing 30-day average.
- Vancouver presently at 5,488, fell 4% (-241) overnight, now 4% below the trailing 30-day average.
- The Prince Rupert pipeline presently at 1,457, decreased 10% (-159) overnight, and 15% below the trailing 30-day average.
- Thunder Bay volumes rose 2% (+48) overnight - currently at 2,659 and 2% above the trailing 30-day average, with 69% of traffic moving on CP.

Hopper Car Rationing

- CN cancelled 4,624 hopper car orders for week 17 as it attempts to recover from the 8 day labour disruption. No hopper cars were rationed or cancelled by CP in week 17

Loads Not Moving

- **The count of cars not moving for 48+ hours increased significantly by 47% (+910) overnight and have now increased for the third consecutive day, reflecting higher counts on both CN and CP. Idle car counts currently at 2,849 and 5% below the trailing 30-day average.**
- CN
 - **The count of idle cars for 48+ hours increased 70% (+408) overnight and have now increased for the third consecutive day - currently at 987 cars.**
 - The number of cars idle for 4+ days decreased for the fourth consecutive day, down 11% (-25) overnight - currently at 200 cars.
 - The count of cars not moving for 7+ days increased 32% (+38) overnight - presently at 156 cars.
 - Vancouver represents 34% of all idle cars.
 - In total 51% of all idle cars are dwelling at origin locations.
- CP
 - **CP idle car counts for 48+ hours rose 37% (+502) overnight - currently at 1,862 cars, the highest seen in the last 30 days.**
 - The number of cars idle for 4+ days increased 33% (+119) overnight - currently at 476 cars.

- The number of cars idle for 7+ days decreased 3% (-5) overnight - currently at 172 cars.
- Vancouver accounts for 56% of all idle cars.
- In total 37% of all idle cars are dwelling at origin locations.

Port Performance

- CN and CP reported a total of 1,374 cars unloaded at the three major ports, 13% above the trailing 30-day average. Week 18 unloads ended ahead of last week's pace by more than 2,050 unloads, reflecting higher unloads across all three major ports - Vancouver, Thunder Bay and Prince Rupert.
- Vancouver
 - 941 unloads reported by CN and CP at the Port of Vancouver; CN - 538 and CP - 403. Week 18 unloads finished ahead of last week's performance by 1,300 unloads.
 - There are more than 1,500 cars on site at Vancouver with more than 850 cars arriving at the port in the last 24 hours.
 - CN and CP have 1,200 cars in British Columbia en route to Vancouver, with 750 cars at Kamloops and west, and 62% of traffic moving on CN.
- Prince Rupert
 - Prince Rupert reported 159 unloads, finished ahead of last week's unloads by 300 unloads.
 - Loads on wheels remain above 1,000 cars - currently at 1,457 cars.
 - There are more than 450 cars west of Jasper en route to Prince Rupert.
 - There are more than 250 cars on site at Prince Rupert with nearly 400 cars arriving at the port in the last 24 hours.
- Thunder Bay
 - 274 unloads were reported at Thunder Bay yesterday. Week 18 unloads ended ahead of last week's pace by 450 unloads.
 - There are 1,150 cars on site at Thunder Bay with nearly 550 cars arriving at the port in the prior 24 hours.
 - There are nearly 600 cars en route to Thunder Bay from Winnipeg and east.

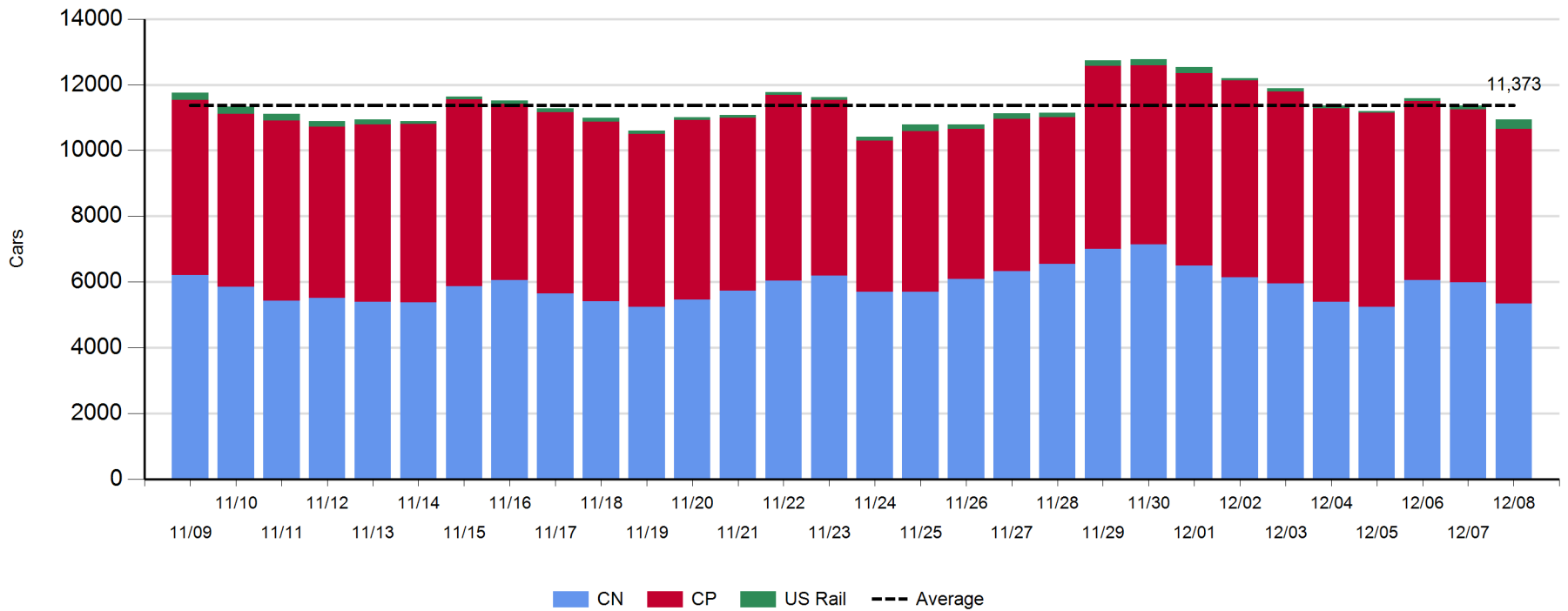
Daily Loads on Wheels - 12/8/2019

	E Canada	Prince Rupert	Thunder Bay	USA/MEX	Vancouver	Total
CN	780	1,457	815	87	2,202	5,341
CP	12		1,844	191	3,262	5,309
Short Line	97				24	121
US Rail				169		169
	889	1,457	2,659	447	5,488	10,940

Change in Loads on Wheels - Prior 24 Hours

	E Canada	Prince Rupert	Thunder Bay	USA/MEX	Vancouver	Total
CN	-189	-159	161	-46	-419	-652
CP	0		-113	-21	188	54
Short Line	97				-10	87
US Rail				87		87
	-92	-159	48	20	-241	-424

Loads on Wheels - Prior 30 Days

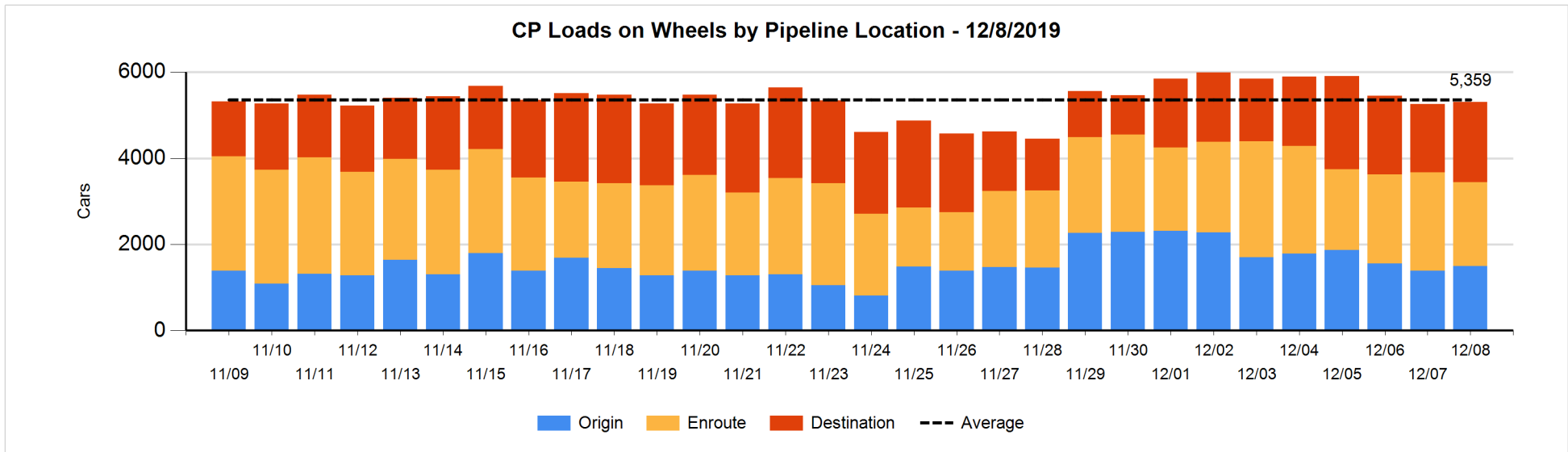
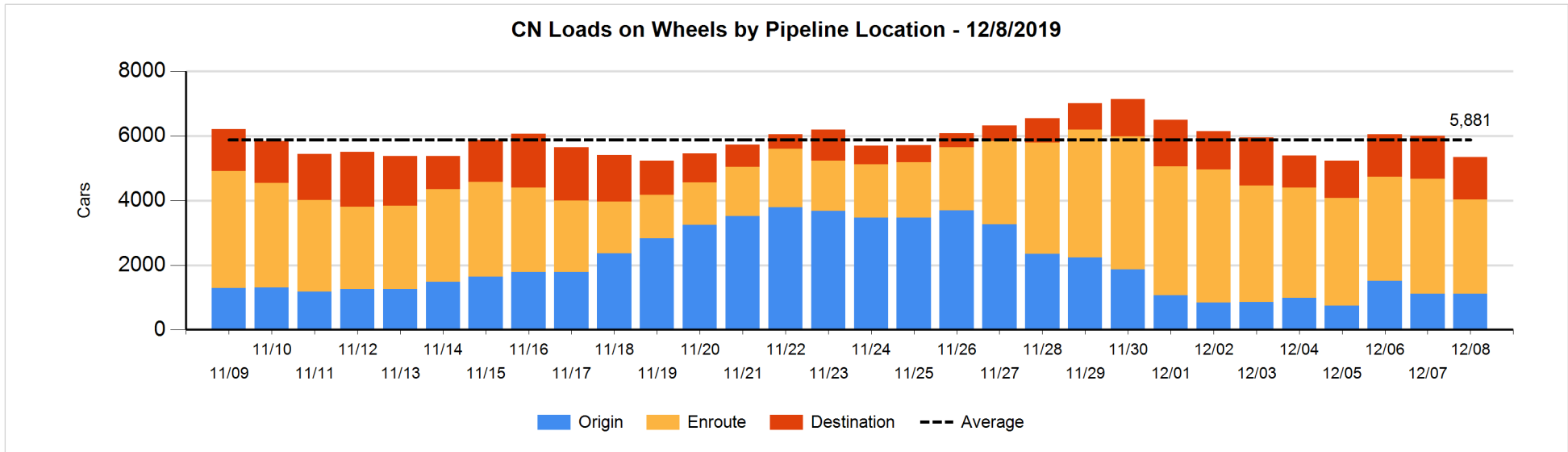


Daily Loads on Wheels By Pipeline Location - 12/8/2019

	E Canada	Prince Rupert	Thunder Bay	USA/MEX	Vancouver	Total
CN						
Origin		303	205		599	1,107
Enroute	596	876	211	78	1,162	2,923
Destination	184	278	399	9	441	1,311
	780	1,457	815	87	2,202	5,341
CP						
Origin	1		546	131	817	1,495
Enroute	9		543	24	1,377	1,953
Destination	2		755	36	1,068	1,861
	12		1,844	191	3,262	5,309
US Rail / Short Line						
Origin						
Enroute	97			159		256
Destination				10	24	34
	97			169	24	290

Change in Daily Loads on Wheels By Pipeline Location - Prior 24 Hours

	E Canada	Prince Rupert	Thunder Bay	USA/MEX	Vancouver	Total
CN						
Origin	-51	-199	205	-5	43	-7
Enroute	21	-182	-260	-41	-174	-636
Destination	-159	222	216	0	-288	-9
	-189	-159	161	-46	-419	-652
CP						
Origin	0		-21	21	112	112
Enroute	0		-140	-52	-139	-331
Destination	0		48	10	215	273
	0		-113	-21	188	54
US Rail / Short Line						
Origin						
Enroute	97			88		185
Destination				-1	-10	-11
	97			87	-10	174

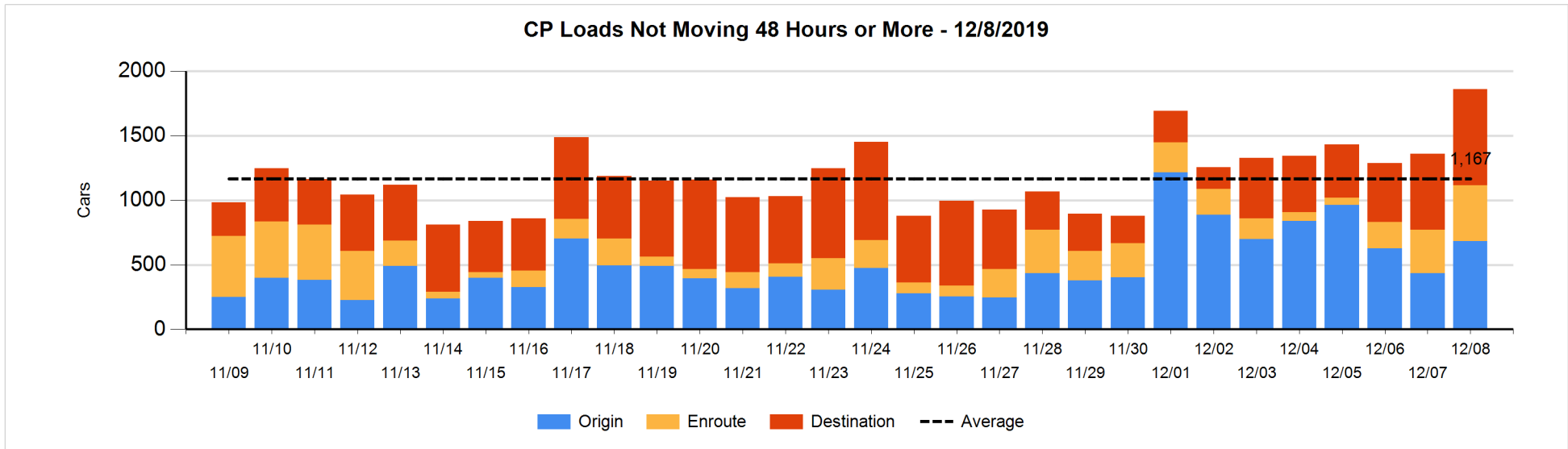
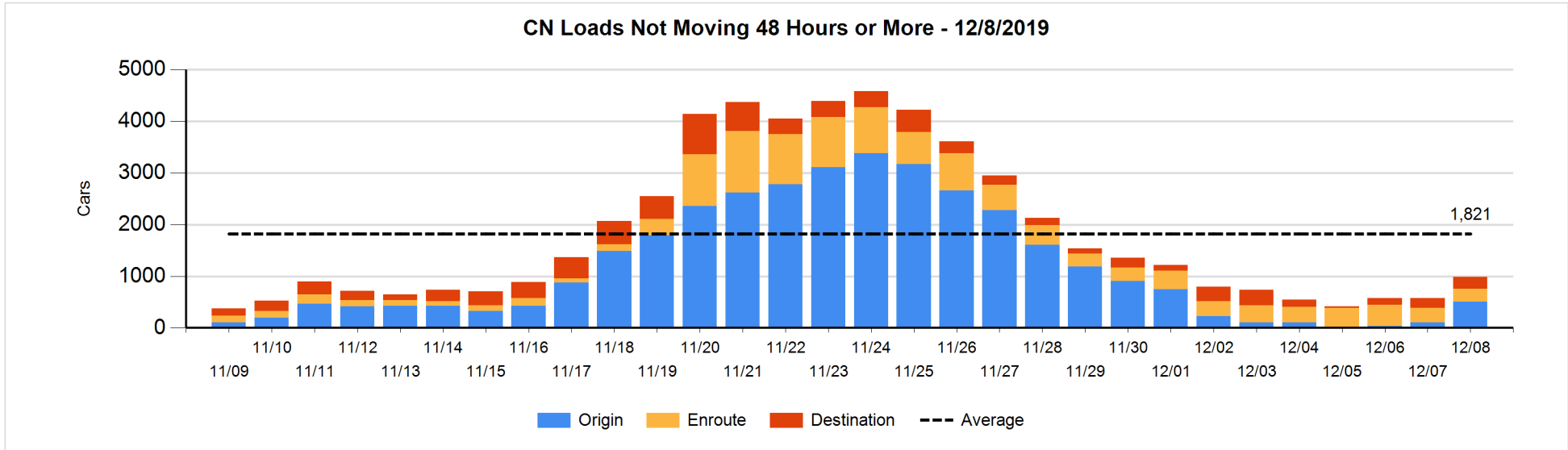


Loads Not Moving 48 Hours or More - 12/8/2019

	E Canada	Prince Rupert	Thunder Bay	USA/MEX	Vancouver	Total
CN						
Origin		204			301	505
Enroute	174	60	3	2	9	248
Destination	111	56	39	5	23	234
	285	320	42	7	333	987
CP						
Origin	1		224	110	349	684
Enroute	8		121	14	288	431
Destination	2		334	4	407	747
	11		679	128	1044	1862
US Rail / Short Line						
Origin						
Enroute				28		28
Destination				9	24	33
				37	24	61

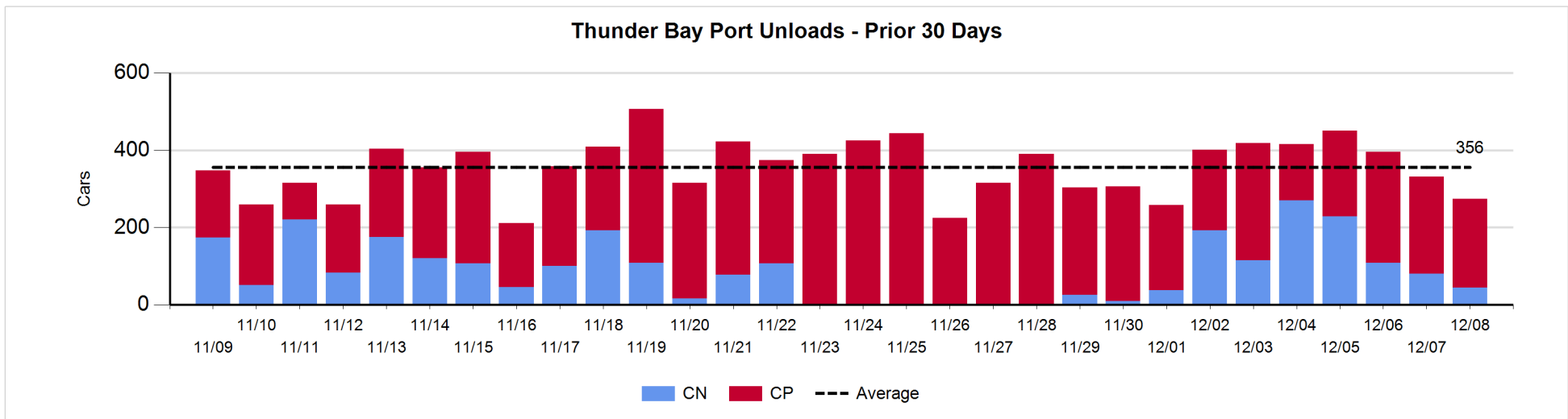
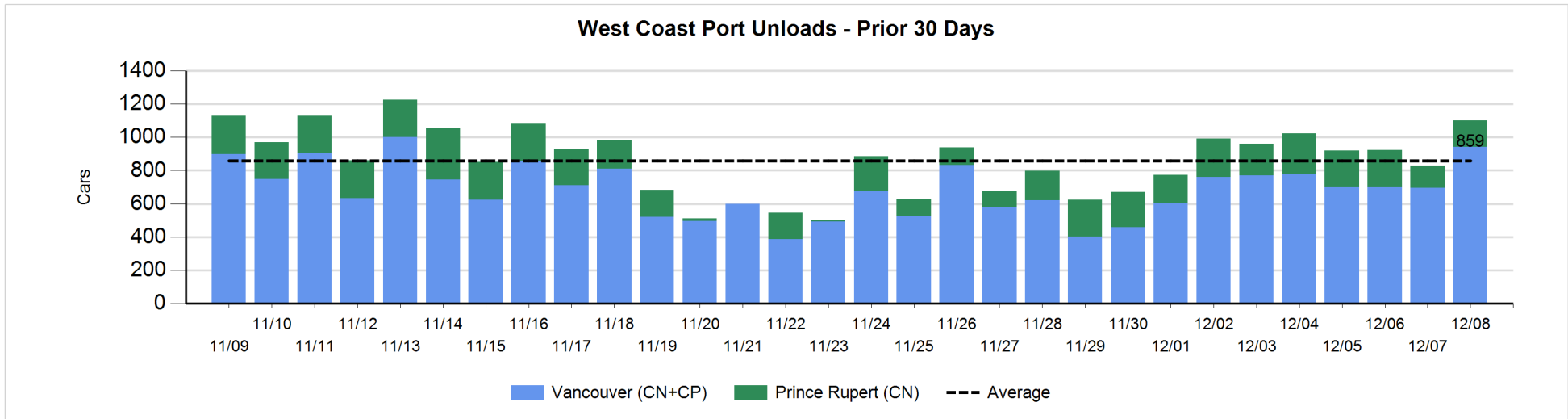
Change in Loads Not Moving 48 Hours or More - 12/8/2019

	E Canada	Prince Rupert	Thunder Bay	USA/MEX	Vancouver	Total
CN						
Origin		101			295	396
Enroute	-31	7	0	2	-10	-32
Destination	98	1	22	0	-77	44
	67	109	22	2	208	408
CP						
Origin	0		-18	1	265	248
Enroute	4		73	-29	48	96
Destination	0		69	4	85	158
	4		124	-24	398	502
US Rail / Short Line						
Origin						
Enroute				19		19
Destination				5	21	26
				24	21	45



Port Unloads - 12/8/2019

	Prince Rupert	Vancouver	West Coast Total	Thunder Bay	Total
CN	159	538	697	44	741
CP		403	403	230	633
	159	941	1,100	274	1,374



Port Terminal Status

Vancouver

Daily Activity for 12/8/2019

	Cars Arrived	Cars Received in Interchange	Cars Delivered in Interchange	Cars Placed for Unloading	Loads on Wheels at Destination As of 12/8/2019
CN	486	15	236	265	441
CP	381	236	30	240	1,068
SRY		15			24

Port Unloads

	12/08	12/07	Week To Date	Last Week
CN	538	293	2,402	1,401
CP	403	403	2,943	2,617
SRY	10	4	52	70

Age Profile of Loaded Cars Waiting Placement for Unloading

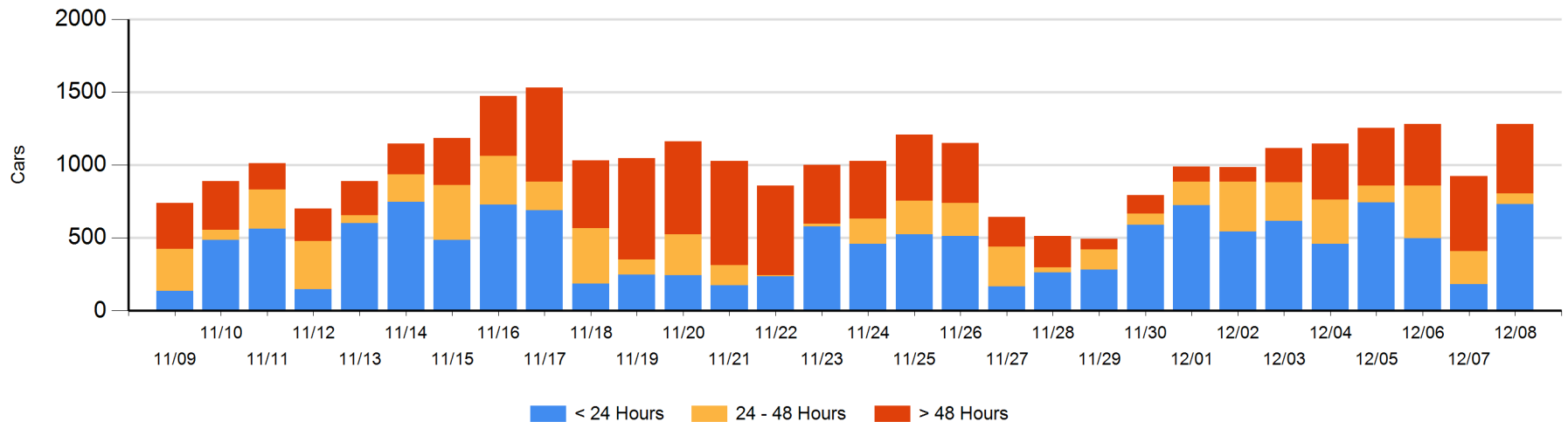
Today

	< 24 Hrs	24 - 48 Hrs	> 48-72 Hrs	> 72 Hrs	Total On Hand
CN	407	65	71	42	585
CP	326	7	22	341	696
SRY			1		1

Change in Last 24 Hours

	< 24 Hrs	24-48 Hrs	48 - 72 Hrs	> 72 Hrs
CN	239	-128	48	-92
CP	313	-26	-186	191
SRY		-1	1	

Loaded Cars on Hand Vancouver Waiting for Placement - Last 30 Days All Railways



Port Terminal Status

Prince Rupert

Daily Activity for 12/8/2019

	Cars Arrived	Cars Received in Interchange	Cars Delivered in Interchange	Cars Placed for Unloading	Loads on Wheels at Destination As of 12/8/2019
CN	381			281	278

Port Unloads

	12/08	12/07	Week To Date	Last Week
CN	159	133	1,400	1,092

Age Profile of Loaded Cars Waiting Placement for Unloading

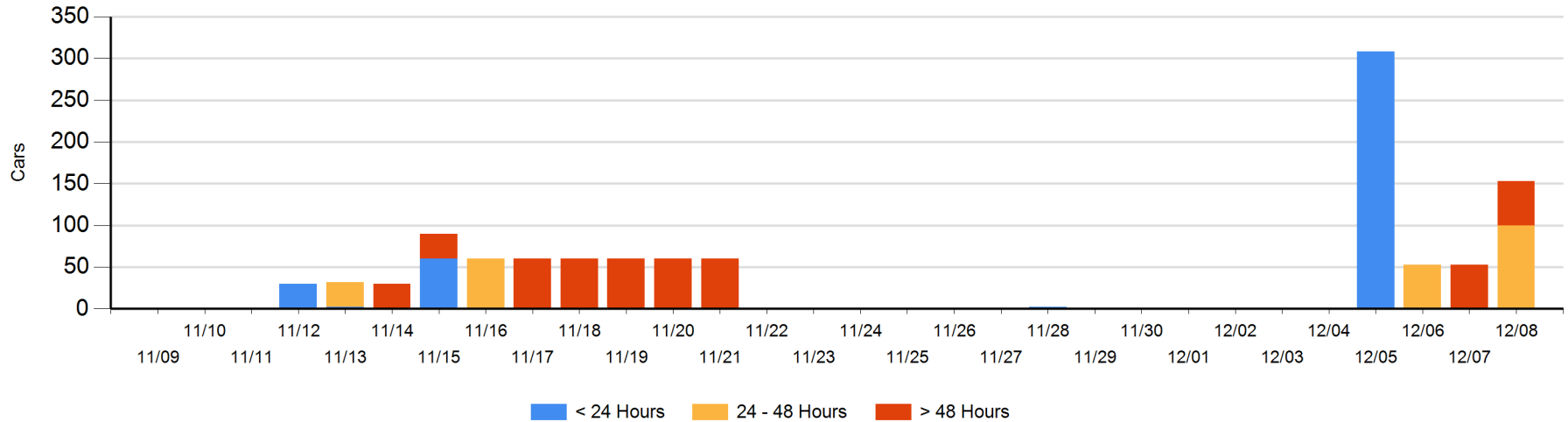
Today

	< 24 Hrs	24 - 48 Hrs	> 48-72 Hrs	> 72 Hrs	Total On Hand
CN		100		53	153

Change in Last 24 Hours

	< 24 Hrs	24-48 Hrs	48 - 72 Hrs	> 72 Hrs
CN		100	-53	53

Loaded Cars on Hand Prince Rupert Waiting for Placement - Last 30 Days All Railways



Port Terminal Status

Thunder Bay

Daily Activity for 12/8/2019

	Cars Arrived	Cars Received in Interchange	Cars Delivered in Interchange	Cars Placed for Unloading	Loads on Wheels at Destination As of 12/8/2019
CN	260			200	399
CP	273			191	755

Port Unloads

	12/08	12/07	Week To Date	Last Week
CN	44	80	1,039	77
CP	230	251	1,649	2,165

Age Profile of Loaded Cars Waiting Placement for Unloading

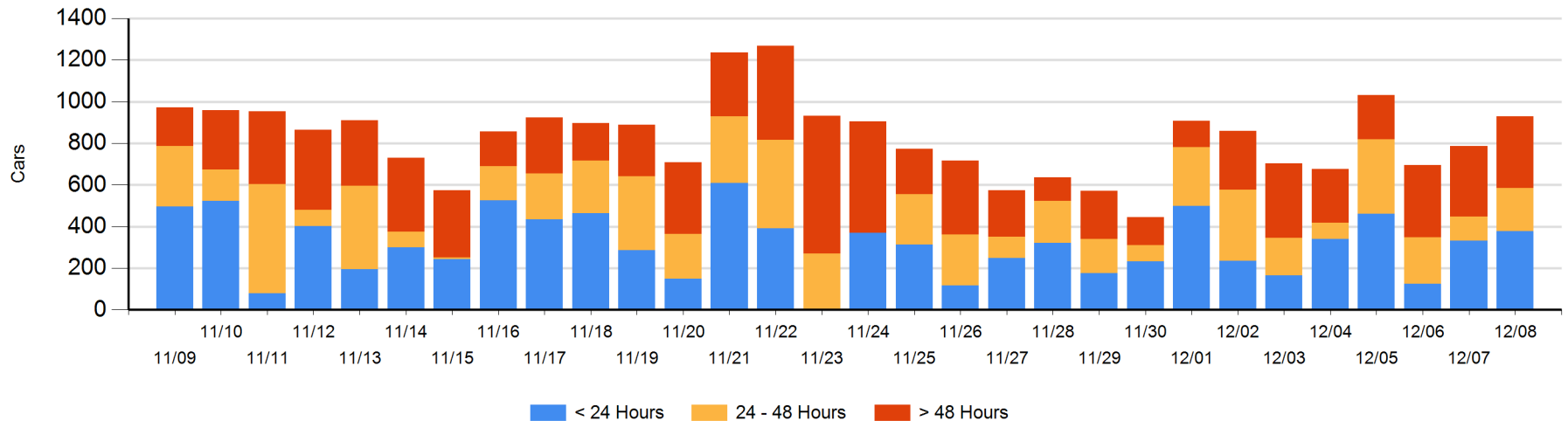
Today

	< 24 Hrs	24 - 48 Hrs	> 48-72 Hrs	> 72 Hrs	Total On Hand
CN	104	98		7	209
CP	273	109	116	221	719

Change in Last 24 Hours

	< 24 Hrs	24-48 Hrs	48 - 72 Hrs	> 72 Hrs
CN	-38	98		0
CP	82	-7	4	3

Loaded Cars on Hand Thunder Bay Waiting for Placement - Last 30 Days All Railways



Measurement Definitions

Loads on Wheels	<p>Count of loaded rail cars including all rail cars that have been released loaded at origin and have not been reported by the railway as unloaded at destination.</p> <p>Counts include all rail cars (hopper cars and boxcars) moving within a pipeline.</p>
Loads Not Moving	<p>Loaded rail cars for which the railways have not reported a movement event for 48 hours or more whether the rail car is at origin, enroute or at destination.</p>
Port Unloads	<p>Count of rail cars reported by railways as unloaded at the western port destinations of Vancouver, Prince Rupert and Thunder Bay.</p> <p>Unload counts include all rail cars (hopper cars and boxcars) unloaded by all receivers including major port terminals, transloaders and other receivers.</p>
Cars Arrived	<p>Count of rail cars reported as arrived at the destination railway terminal.</p>
Cars Received in Interchange	<p>Count of rail cars received in interchange by each railway within a destination railway terminal. Interchange activity is tracked for the Vancouver and Thunder Bay pipelines as applicable.</p>
Cars Delivered in Interchange	<p>Count of rail cars delivered in interchange by each railway within a destination railway terminal. Interchange activity is tracked for the Vancouver and Thunder Bay pipelines as applicable.</p>
Cars Placed for Unloading	<p>Count of rail cars reported by the railways as placed loaded at the receiver's facility for unloading.</p>
Loads on Wheels at Destination	<p>Count of rail cars that remain under load within the destination railway terminal including rail cars that have been reported as placed for unloading but not yet reported as unloaded.</p>
Waiting Placement for Unloading	<p>Count of rail cars that have been reported as arrived at the destination railway terminal but not reported as placed for unloading by the railway.</p> <p>For the Ports of Vancouver, Prince Rupert and Thunder Bay the count of rail cars waiting placement for unloading is categorized by age – i.e. the elapsed time from arrival at destination to the current report date.</p>