

SPEED READ

- Loads on wheels decreased overnight, marking reduced CP traffic offset by a rise in CN volumes. On a net basis, volumes decreased due to reduced volumes across all corridors other than Vancouver.
- Network fluidity improved overnight, led by a decline in idle car counts on both CN and CP by 15% (-148) and 12% (-230), respectively. The total count of cars for 4+ days on both railways increased 39% (+265) overnight - presently at 942 cars.
- One day in Week 19 unloads now behind prior week's performance by 150 unloads, marking reduced unloads at Vancouver and Thunder Bay offset by improved week over week performance at Prince Rupert.

Loads on Wheels

- Loads on wheels decreased for the third consecutive day, down 2% (-264) overnight, due to reduced traffic on CP offset by higher traffic on CN - combined total at 10,678 and 6% below the trailing 30-day average.
- On a net basis, the decline in loads on wheels indicates reduced volumes across all corridors other than Vancouver.
- CN volumes gained 2% (+131) overnight, with higher traffic in the Vancouver and USA/MEX corridors offset by reduced volumes in the E. Canada, Thunder Bay and Prince Rupert corridors. System wide CN loads on wheels presently at 5,474 and 7% below the trailing 30-day average.
- CP volumes fell 7% (-391) overnight, driven by a decline in traffic across all corridors. CP system wide loads on wheels now at 4,918 and 8% below the trailing 30-day average.
- Vancouver presently at 5,632, increased 3% (+144) overnight, now 1% below the trailing 30-day average.
- The Prince Rupert pipeline now at 1,429, decreased 2% (-29) overnight and has now decreased for the third consecutive day, and 16% below the trailing 30-day average.
- Thunder Bay volumes decreased 9% (-227) overnight - now at 2,432 and 7% below the trailing 30-day average, with 69% of traffic moving on CP.

Hopper Car Rationing

- CN cancelled 4,624 hopper car orders for week 17 as it attempts to recover from the 8 day labour disruption. No hopper cars were rationed or cancelled by CP in week 17

Loads Not Moving

- **The count of cars not moving for 48+ hours declined 13% (-378) overnight, reflecting reduced counts on both CN and CP. Idle car counts now at 2,472 and 18% below the trailing 30-day average.**
- CN
 - **The count of idle cars for 48+ hours decreased 15% (-148) overnight - currently at 840 cars.**
 - The number of cars idle for 4+ days declined 19% (-39) overnight and have now decreased for the fifth consecutive day - presently at 162 cars.
 - The count of cars not moving for 7+ days decreased 21% (-32) overnight - currently at 124 cars.
 - Vancouver represents 17% of all idle cars.
 - In total 36% of all idle cars are dwelling at origin locations.
- CP
 - **CP idle car counts for 48+ hours fell 12% (-230) overnight - presently at 1,632 cars.**
 - The number of cars idle for 4+ days increased 64% (+304) overnight - presently at 780 cars, the highest seen in the last 30 days.

- The number of cars idle for 7+ days decreased 14% (-24) overnight - now at 148 cars.
- Vancouver accounts for 41% of all idle cars.
- In total 36% of all idle cars are dwelling at origin locations.

Port Performance

- CN and CP reported a total of 1,236 cars unloaded at the three major ports, 2% above the trailing 30-day average. One day in Week 19 unloads now behind last week's pace by 150 unloads, marking reduced unloads at Vancouver and Thunder Bay offset by higher unloads at Prince Rupert.
- Vancouver
 - 626 unloads reported by CN and CP at the Port of Vancouver; CN - 272 and CP - 354. One day in Week 19 unloads are tracking behind last week's performance by around 150 unloads.
 - There are more than 1,450 cars on site at Vancouver with more than 550 cars arriving at the port in the last 24 hours.
 - CN and CP have 1,300 cars in British Columbia en route to Vancouver, with around 550 cars at Kamloops and west, and 60% of traffic moving on CP.
- Prince Rupert
 - Prince Rupert reported 278 unloads, now ahead of last week's unloads after one day by 50 unloads.
 - Loads on wheels remain above 1,000 cars - presently at 1,429 cars.
 - There are more than 350 cars west of Jasper en route to Prince Rupert.
 - There are more than 250 cars on site at Prince Rupert with more than 250 cars arriving at the port in the last 24 hours.
- Thunder Bay
 - 332 unloads were reported at Thunder Bay yesterday. One day in Week 19 unloads are tracking behind last week's pace by more than 50 unloads.
 - There are more than 1,150 cars on site at Thunder Bay with 350 cars arriving at the port in the prior 24 hours.
 - There are about 600 cars en route to Thunder Bay from Winnipeg and east.

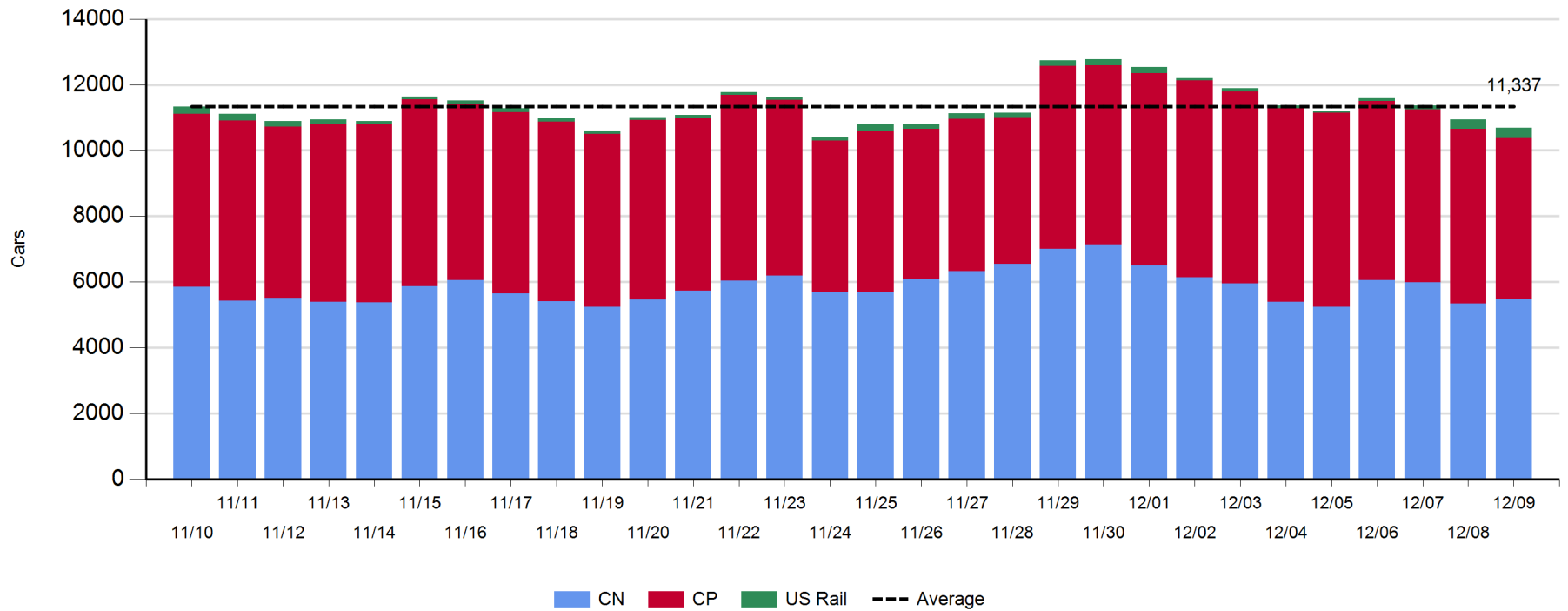
Daily Loads on Wheels - 12/9/2019

	E Canada	Prince Rupert	Thunder Bay	USA/MEX	Vancouver	Total
CN	685	1,429	761	89	2,510	5,474
CP	10		1,671	152	3,085	4,918
Short Line	97				37	134
US Rail				152		152
	792	1,429	2,432	393	5,632	10,678

Change in Loads on Wheels - Prior 24 Hours

	E Canada	Prince Rupert	Thunder Bay	USA/MEX	Vancouver	Total
CN	-96	-29	-54	2	308	131
CP	-2		-173	-39	-177	-391
Short Line	0				13	13
US Rail				-17		-17
	-98	-29	-227	-54	144	-264

Loads on Wheels - Prior 30 Days



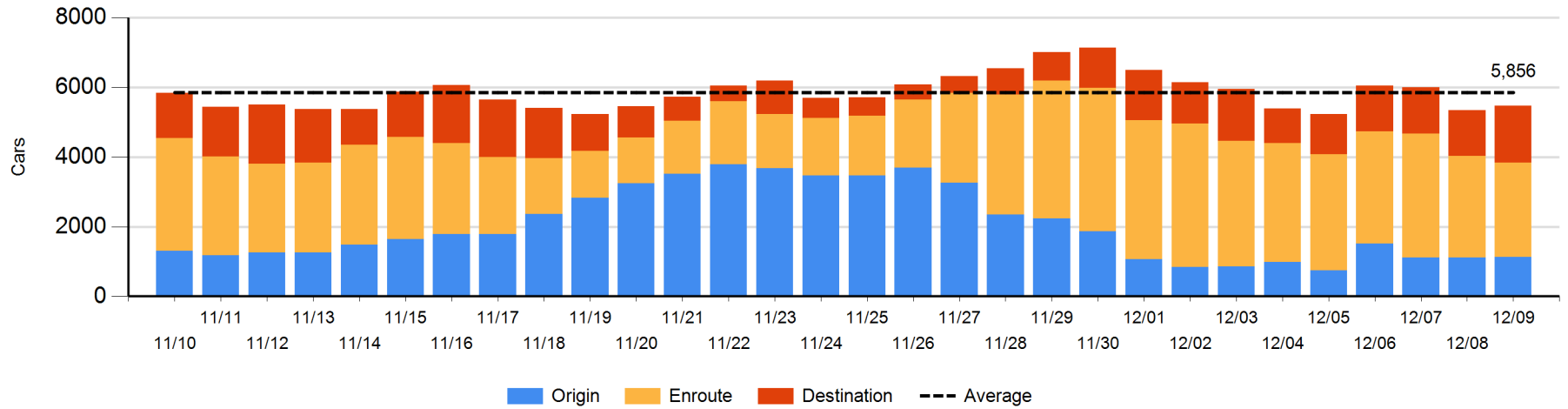
Daily Loads on Wheels By Pipeline Location - 12/9/2019

	E Canada	Prince Rupert	Thunder Bay	USA/MEX	Vancouver	Total
CN						
Origin	47	450	100	5	531	1,133
Enroute	482	702	210	70	1,238	2,702
Destination	156	277	451	14	741	1,639
	685	1,429	761	89	2,510	5,474
CP						
Origin	1		336	132	939	1,408
Enroute	9		616	6	1,455	2,086
Destination			719	14	691	1,424
	10		1,671	152	3,085	4,918
US Rail / Short Line						
Origin						
Enroute	97			144		241
Destination				8	37	45
	97			152	37	286

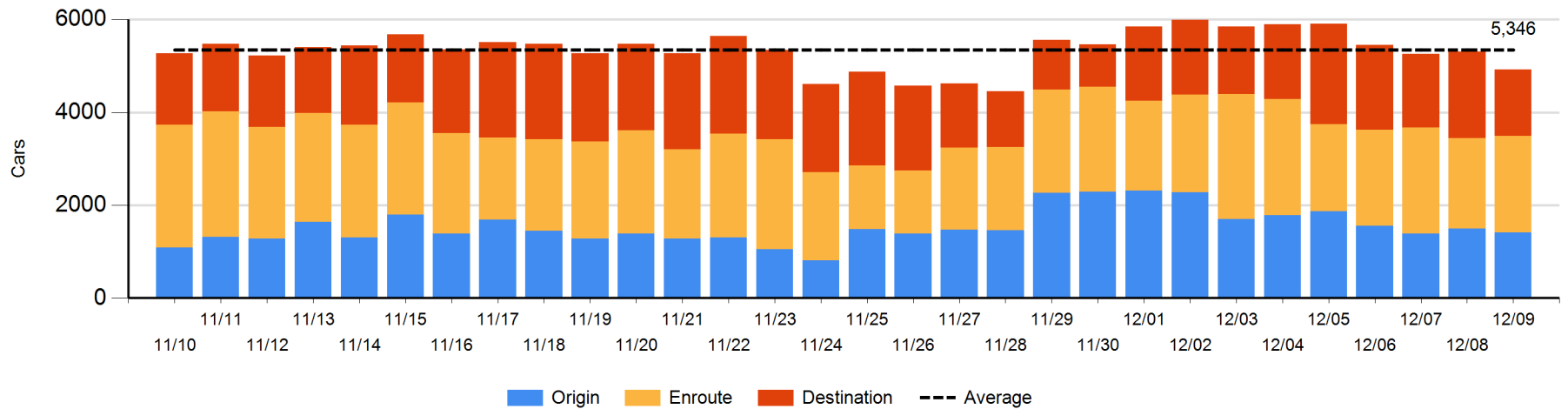
Change in Daily Loads on Wheels By Pipeline Location - Prior 24 Hours

	E Canada	Prince Rupert	Thunder Bay	USA/MEX	Vancouver	Total
CN						
Origin	47	147	-105	5	-68	26
Enroute	-115	-175	-1	-8	76	-223
Destination	-28	-1	52	5	300	328
	-96	-29	-54	2	308	131
CP						
Origin	0		-210	1	122	-87
Enroute	0		73	-18	78	133
Destination	-2		-36	-22	-377	-437
	-2		-173	-39	-177	-391
US Rail / Short Line						
Origin						
Enroute	0			-15		-15
Destination				-2	13	11
	0			-17	13	-4

CN Loads on Wheels by Pipeline Location - 12/9/2019



CP Loads on Wheels by Pipeline Location - 12/9/2019

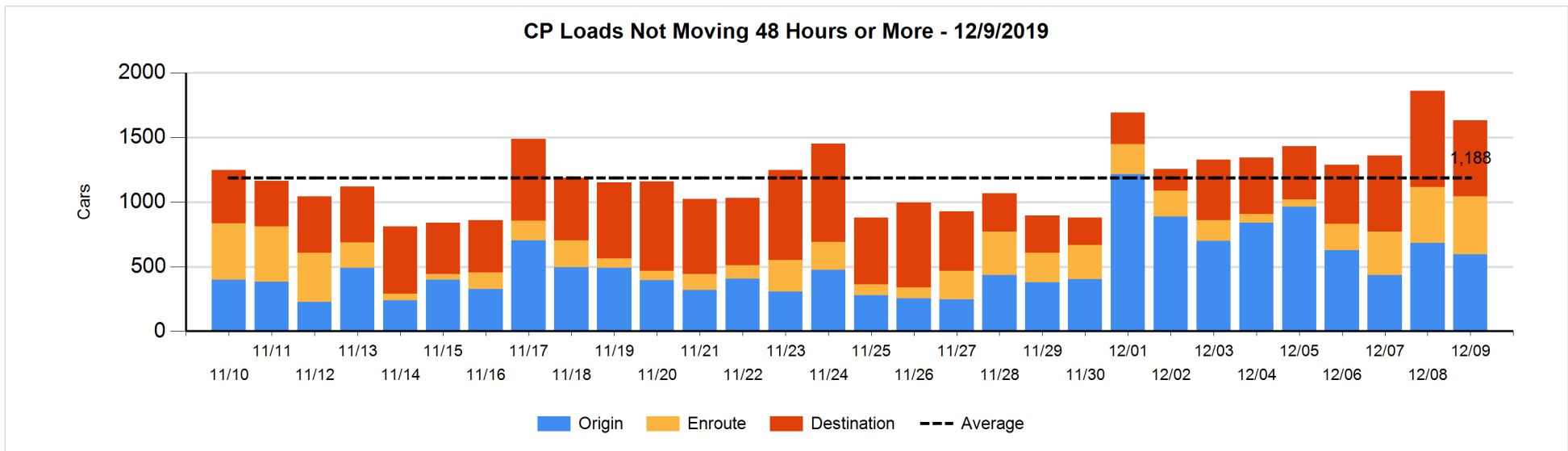
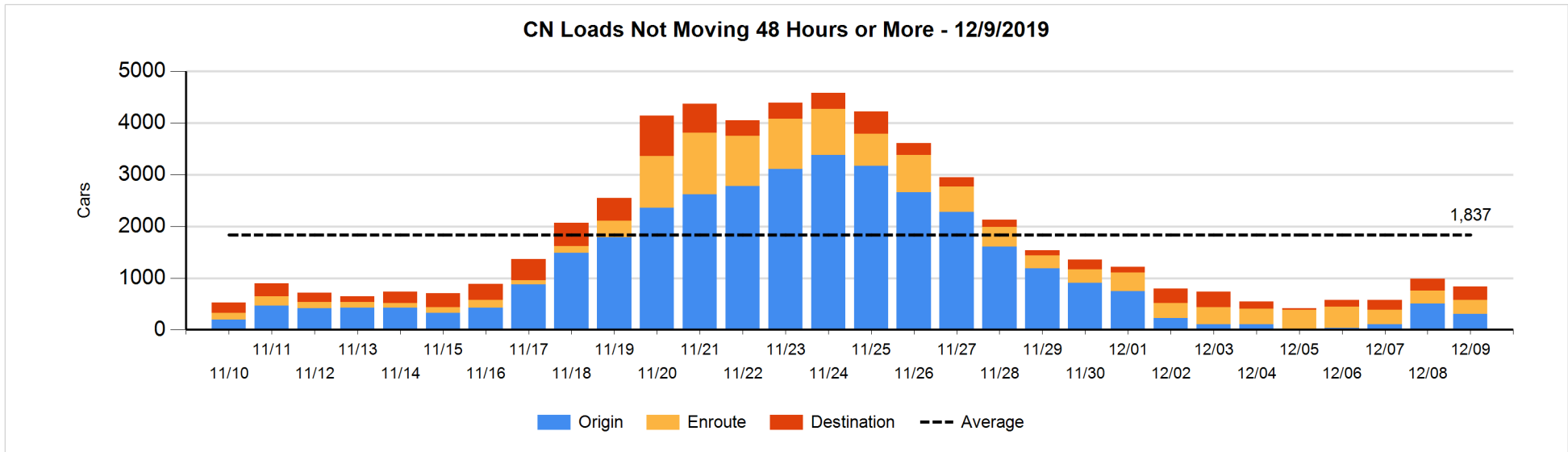


Loads Not Moving 48 Hours or More - 12/9/2019

	E Canada	Prince Rupert	Thunder Bay	USA/MEX	Vancouver	Total
CN						
Origin		200			100	300
Enroute	126	133	3	1	12	275
Destination	43	95	87	6	34	265
	169	428	90	7	146	840
CP						
Origin	1		224	131	239	595
Enroute	4		233	2	209	448
Destination			369		220	589
	5		826	133	668	1632
US Rail / Short Line						
Origin						
Enroute				27		27
Destination				4	19	23
				31	19	50

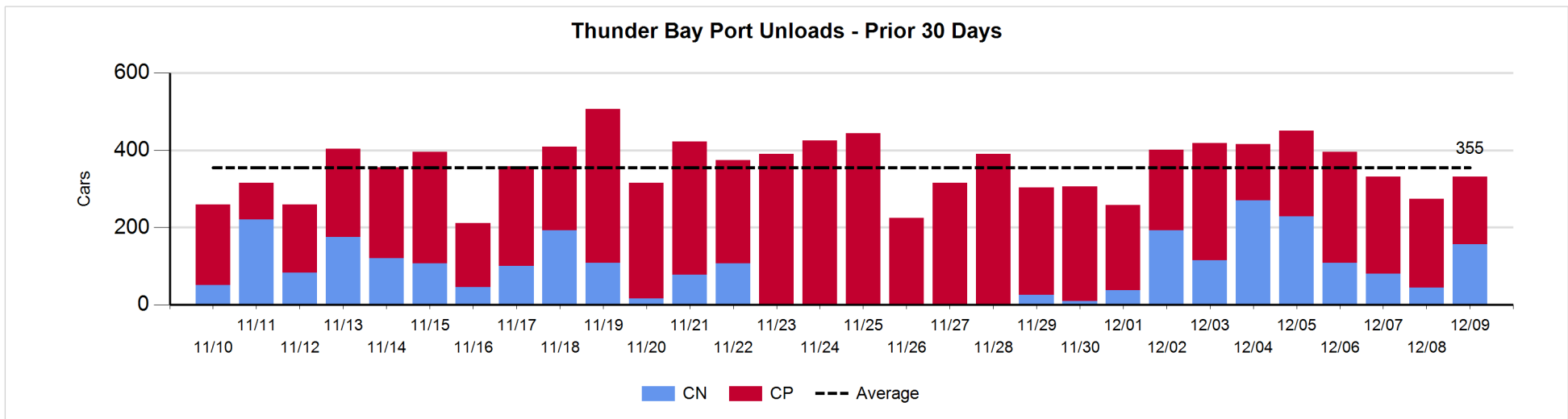
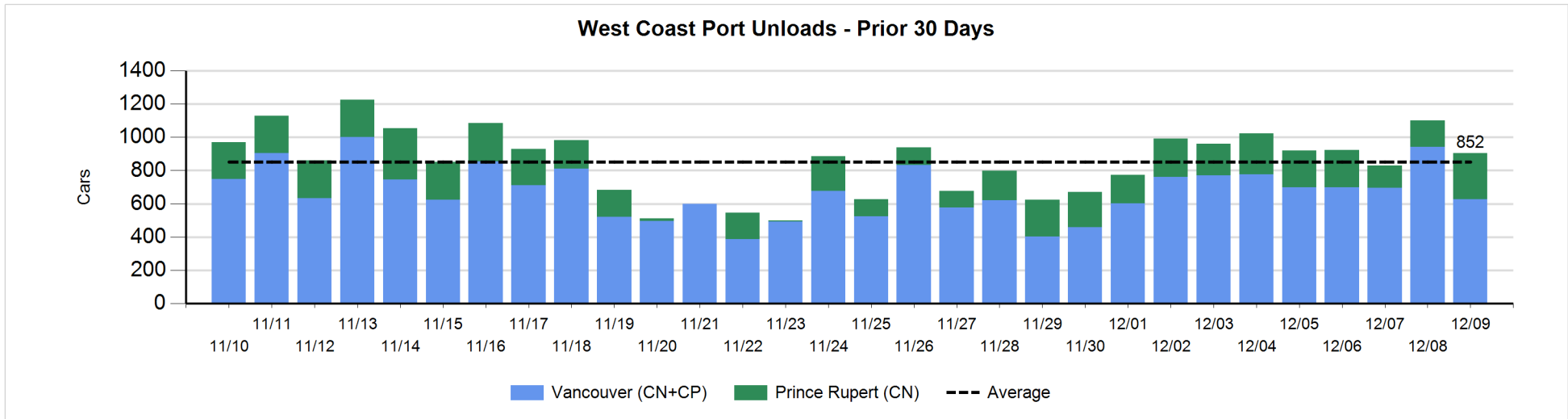
Change in Loads Not Moving 48 Hours or More - 12/9/2019

	E Canada	Prince Rupert	Thunder Bay	USA/MEX	Vancouver	Total
CN						
Origin		-4			-201	-205
Enroute	-48	72	0	-1	3	26
Destination	-68	39	48	1	11	31
	-116	107	48	0	-187	-148
CP						
Origin	0		0	21	-110	-89
Enroute	-4		112	-12	-79	17
Destination	-2		35	-4	-187	-158
	-6		147	5	-376	-230
US Rail / Short Line						
Origin						
Enroute				-1		-1
Destination				-5	-5	-10
				-6	-5	-11



Port Unloads - 12/9/2019

	Prince Rupert	Vancouver	West Coast Total	Thunder Bay	Total
CN	278	272	550	156	706
CP		354	354	176	530
	278	626	904	332	1,236



Port Terminal Status

Vancouver

Daily Activity for 12/9/2019

	Cars Arrived	Cars Received in Interchange	Cars Delivered in Interchange	Cars Placed for Unloading	Loads on Wheels at Destination As of 12/9/2019
CN	379	236	210	382	741
CP	196	193	239	388	691
SRY	1	20		14	37

Port Unloads

	12/09	12/08	Week To Date	Last Week
CN	272	538	272	2,402
CP	354	403	354	2,943
SRY	14	10	14	52

Age Profile of Loaded Cars Waiting Placement for Unloading

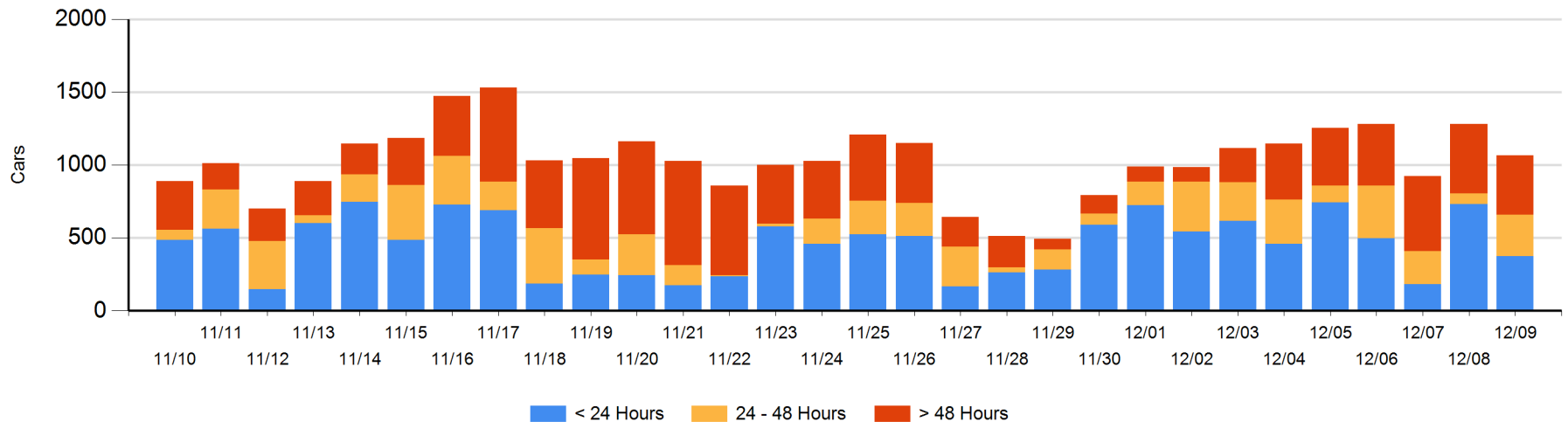
Today

	< 24 Hrs	24 - 48 Hrs	> 48-72 Hrs	> 72 Hrs	Total On Hand
CN	179	181	27	49	436
CP	195	103	6	326	630
SRY				1	1

Change in Last 24 Hours

	< 24 Hrs	24-48 Hrs	48 - 72 Hrs	> 72 Hrs
CN	-228	116	-44	7
CP	-131	96	-16	-15
SRY			-1	1

Loaded Cars on Hand Vancouver Waiting for Placement - Last 30 Days All Railways



Port Terminal Status

Prince Rupert

Daily Activity for 12/9/2019

	Cars Arrived	Cars Received in Interchange	Cars Delivered in Interchange	Cars Placed for Unloading	Loads on Wheels at Destination As of 12/9/2019
CN	278			431	277

Port Unloads

	12/09	12/08	Week To Date	Last Week
CN	278	159	278	1,400

Age Profile of Loaded Cars Waiting Placement for Unloading

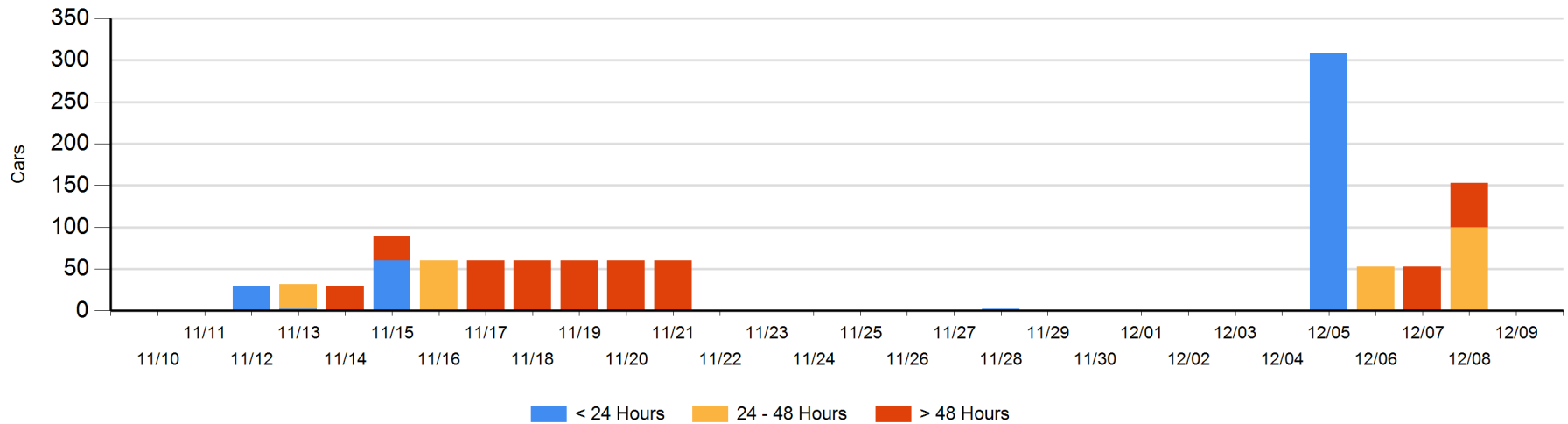
Today

	< 24 Hrs	24 - 48 Hrs	> 48-72 Hrs	> 72 Hrs	Total On Hand
CN					0

Change in Last 24 Hours

	< 24 Hrs	24-48 Hrs	48 - 72 Hrs	> 72 Hrs
CN		-100		-53

Loaded Cars on Hand Prince Rupert Waiting for Placement - Last 30 Days All Railways



Port Terminal Status

Thunder Bay

Daily Activity for 12/9/2019

	Cars Arrived	Cars Received in Interchange	Cars Delivered in Interchange	Cars Placed for Unloading	Loads on Wheels at Destination As of 12/9/2019
CN	210			111	451
CP	140			226	719

Port Unloads

	12/09	12/08	Week To Date	Last Week
CN	156	44	156	1,039
CP	176	230	176	1,649

Age Profile of Loaded Cars Waiting Placement for Unloading

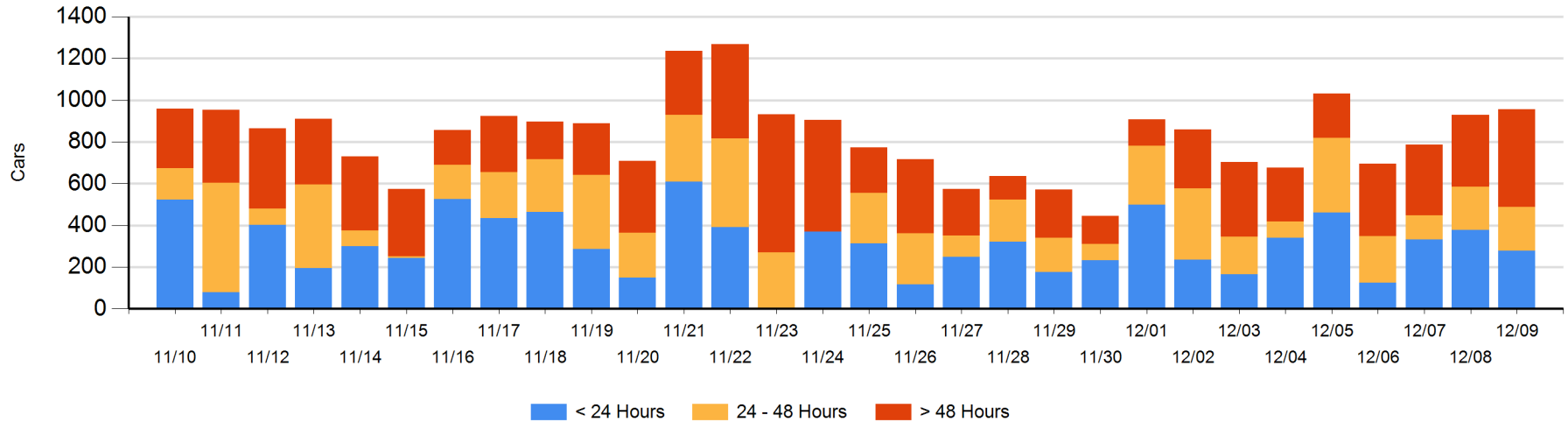
Today

	< 24 Hrs	24 - 48 Hrs	> 48-72 Hrs	> 72 Hrs	Total On Hand
CN	141	104	56	7	308
CP	137	107	96	307	647

Change in Last 24 Hours

	< 24 Hrs	24-48 Hrs	48 - 72 Hrs	> 72 Hrs
CN	37	6	56	0
CP	-136	-2	-20	86

Loaded Cars on Hand Thunder Bay Waiting for Placement - Last 30 Days All Railways



Measurement Definitions

Loads on Wheels	<p>Count of loaded rail cars including all rail cars that have been released loaded at origin and have not been reported by the railway as unloaded at destination.</p> <p>Counts include all rail cars (hopper cars and boxcars) moving within a pipeline.</p>
Loads Not Moving	<p>Loaded rail cars for which the railways have not reported a movement event for 48 hours or more whether the rail car is at origin, enroute or at destination.</p>
Port Unloads	<p>Count of rail cars reported by railways as unloaded at the western port destinations of Vancouver, Prince Rupert and Thunder Bay.</p> <p>Unload counts include all rail cars (hopper cars and boxcars) unloaded by all receivers including major port terminals, transloaders and other receivers.</p>
Cars Arrived	<p>Count of rail cars reported as arrived at the destination railway terminal.</p>
Cars Received in Interchange	<p>Count of rail cars received in interchange by each railway within a destination railway terminal. Interchange activity is tracked for the Vancouver and Thunder Bay pipelines as applicable.</p>
Cars Delivered in Interchange	<p>Count of rail cars delivered in interchange by each railway within a destination railway terminal. Interchange activity is tracked for the Vancouver and Thunder Bay pipelines as applicable.</p>
Cars Placed for Unloading	<p>Count of rail cars reported by the railways as placed loaded at the receiver's facility for unloading.</p>
Loads on Wheels at Destination	<p>Count of rail cars that remain under load within the destination railway terminal including rail cars that have been reported as placed for unloading but not yet reported as unloaded.</p>
Waiting Placement for Unloading	<p>Count of rail cars that have been reported as arrived at the destination railway terminal but not reported as placed for unloading by the railway.</p> <p>For the Ports of Vancouver, Prince Rupert and Thunder Bay the count of rail cars waiting placement for unloading is categorized by age – i.e. the elapsed time from arrival at destination to the current report date.</p>