

SPEED READ

- Loads on wheels rose overnight, reflecting higher CP volumes offset by a decline in CN volumes. On a net basis, volumes increased due to higher traffic across all corridors other than Prince Rupert.
- Network fluidity improved overnight, led by a decline in idle car counts on CP by 12% (-186) offset by a rise in idle car counts on CN by 2% (+14). The total count of cars for 4+ days on both railways increased 18% (+151) overnight and have now increased for the third consecutive day - currently at 984 cars.
- Two days in Week 19 unloads now behind prior week's performance by more than 200 unloads, reflecting reduced unloads at Vancouver and Thunder Bay offset by improved week over week performance at Prince Rupert.

=====

Loads on Wheels

- Loads on wheels rose 5% (+577) overnight, due to higher traffic on CP offset by lower volumes on CN - combined total at 11,372 and in line with the trailing 30-day average.
- On a net basis, the increase in loads on wheels indicates higher traffic across all corridors other than Prince Rupert.
- CN volumes declined 3% (-162) overnight, with reduced volumes in the Vancouver, Prince Rupert and Thunder Bay corridors offset by higher volumes in the E. Canada and USA/MEX corridors. System wide CN loads on wheels now at 5,288 and 9% below the trailing 30-day average.
- CP volumes gained significantly by 14% (+698) overnight, driven by a rise in traffic across all corridors - Vancouver, Thunder Bay, USA/MEX and E. Canada. CP system wide loads on wheels now at 5,732 and 7% above the trailing 30-day average.
- Vancouver presently at 5,817, increased slightly by 1% (+69) overnight, now 2% above the trailing 30-day average.
- The Prince Rupert pipeline currently at 1,285, the lowest seen in the last 30 days, decreased for the fourth consecutive day, down 10% (-144) overnight, and 24% below the trailing 30-day average.
- Thunder Bay volumes gained significantly by 14% (+330) overnight - currently at 2,762 and 6% above the trailing 30-day average, with 75% of traffic moving on CP.

Hopper Car Rationing

- CN cancelled 4,624 hopper car orders for week 17 as it attempts to recover from the 8 day labour disruption. No hopper cars were rationed or cancelled by CP in week 17

Loads Not Moving

- **The count of cars not moving for 48+ hours decreased 7% (-172) overnight, reflecting reduced counts on CP offset by higher counts on CN. Idle car counts currently at 2,191 and 28% below the trailing 30-day average.**
- CN
 - **The count of idle cars for 48+ hours rose 2% (+14) overnight - currently at 854 cars.**
 - The number of cars idle for 4+ days increased 170% (+275) overnight - currently at 437 cars.
 - The count of cars not moving for 7+ days rose 6% (+8) overnight - now at 132 cars.
 - Vancouver represents 26% of all idle cars.
 - In total 47% of all idle cars are dwelling at origin locations.
- CP
 - **CP idle car counts for 48+ hours declined 12% (-186) overnight - presently at 1,337 cars.**

- The number of cars idle for 4+ days fell 18% (-124) overnight - presently at 547 cars.
- The number of cars idle for 7+ days fell for the third consecutive day, down 41% (-60) overnight - currently at 88 cars.
- Vancouver accounts for 54% of all idle cars.
- In total 48% of all idle cars are dwelling at origin locations.

Port Performance

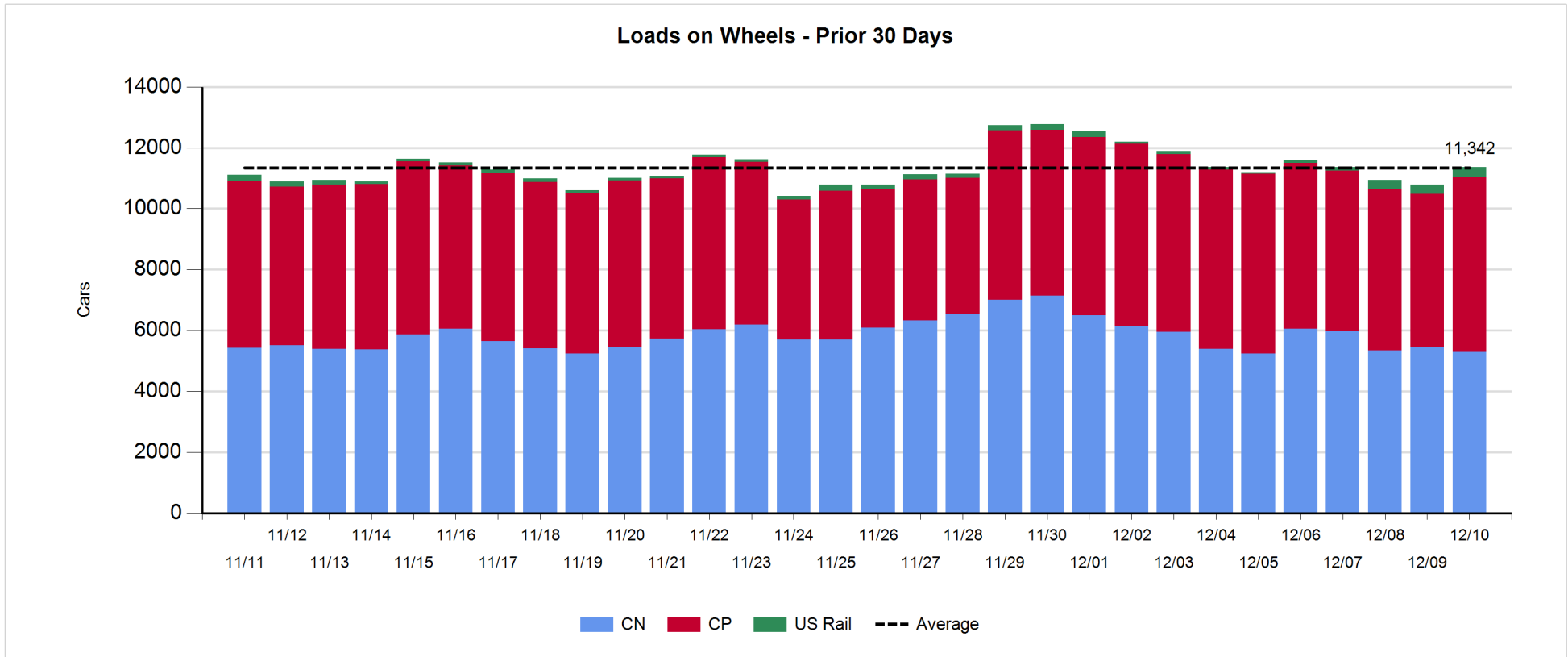
- CN and CP reported a total of 1,297 cars unloaded at the three major ports, 7% above the trailing 30-day average. Two days in Week 19 unloads now behind last week's pace by more than 200 unloads, reflecting reduced unloads at Vancouver and Thunder Bay offset by higher unloads at Prince Rupert.
- Vancouver
 - 724 unloads reported by CN and CP at the Port of Vancouver; CN - 435 and CP - 289. Two days in Week 19 unloads are tracking behind last week's performance by more than 150 unloads.
 - There are around 1,550 cars on site at Vancouver with more than 800 cars arriving at the port in the last 24 hours.
 - CN and CP have more than 1,250 cars in British Columbia en route to Vancouver, with around 1,100 cars at Kamloops and west, and 61% of traffic moving on CP.
- Prince Rupert
 - Prince Rupert reported 233 unloads, now ahead of last week's unloads after two days by 100 unloads.
 - Loads on wheels remain above 1,000 cars - now at 1,285 cars.
 - There are 450 cars west of Jasper en route to Prince Rupert.
 - There are 100 cars on site at Prince Rupert with 50 cars arriving at the port in the last 24 hours.
- Thunder Bay
 - 340 unloads were reported at Thunder Bay yesterday. Two days in Week 19 unloads are tracking behind last week's pace by 150 unloads.
 - There are around 1,150 cars on site at Thunder Bay with 300 cars arriving at the port in the prior 24 hours.
 - There are around 300 cars en route to Thunder Bay from Winnipeg and east.

Daily Loads on Wheels - 12/10/2019

	E Canada	Prince Rupert	Thunder Bay	USA/MEX	Vancouver	Total
CN	828	1,285	697	163	2,315	5,288
CP	35		2,065	197	3,435	5,732
Short Line	97				67	164
US Rail				188		188
	960	1,285	2,762	548	5,817	11,372

Change in Loads on Wheels - Prior 24 Hours

	E Canada	Prince Rupert	Thunder Bay	USA/MEX	Vancouver	Total
CN	142	-144	-64	74	-170	-162
CP	25		394	45	234	698
Short Line	0				5	5
US Rail				36		36
	167	-144	330	155	69	577

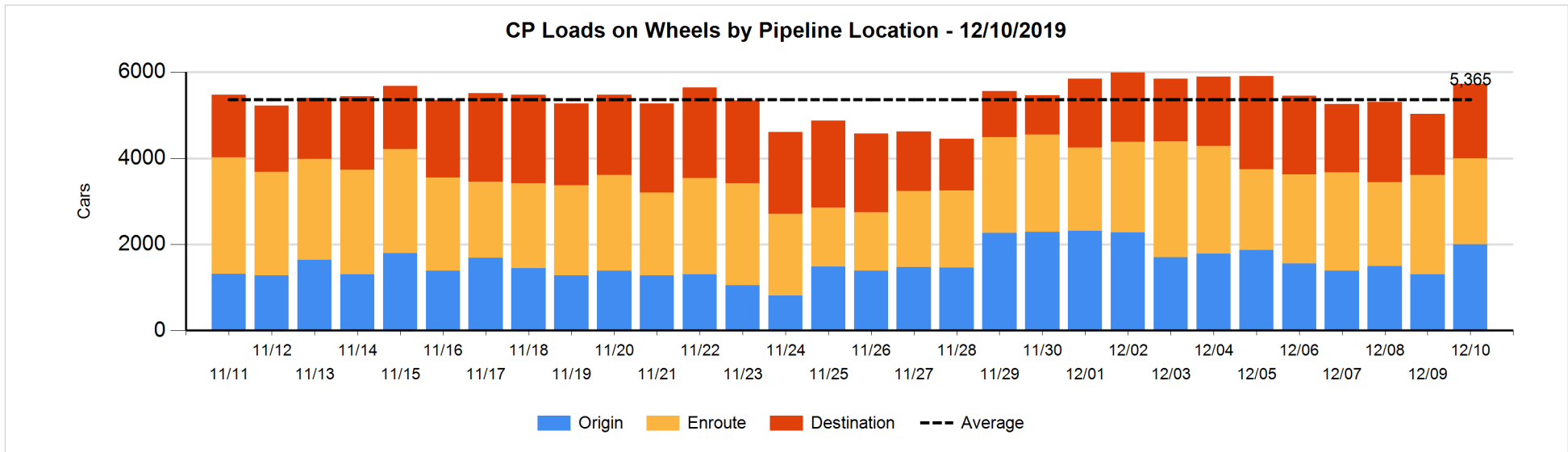
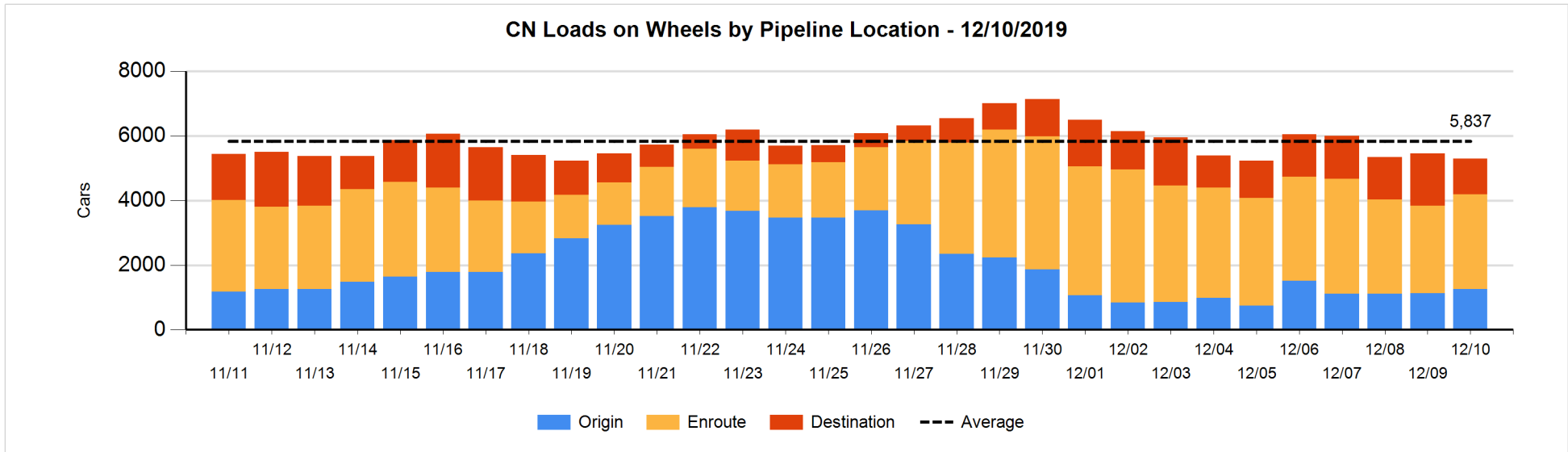


Daily Loads on Wheels By Pipeline Location - 12/10/2019

	E Canada	Prince Rupert	Thunder Bay	USA/MEX	Vancouver	Total
CN						
Origin	239	390	100	79	453	1,261
Enroute	480	800	310	62	1,276	2,928
Destination	109	95	287	22	586	1,099
	828	1,285	697	163	2,315	5,288
CP						
Origin	1		656	71	1,270	1,998
Enroute	33		565	116	1,280	1,994
Destination	1		844	10	885	1,740
	35		2,065	197	3,435	5,732
US Rail / Short Line						
Origin						
Enroute	97			150		247
Destination				38	67	105
	97			188	67	352

Change in Daily Loads on Wheels By Pipeline Location - Prior 24 Hours

	E Canada	Prince Rupert	Thunder Bay	USA/MEX	Vancouver	Total
CN						
Origin	192	-60	0	74	-78	128
Enroute	-3	98	100	-8	38	225
Destination	-47	-182	-164	8	-130	-515
	142	-144	-64	74	-170	-162
CP						
Origin	0		320	48	331	699
Enroute	24		-51	0	-291	-318
Destination	1		125	-3	194	317
	25		394	45	234	698
US Rail / Short Line						
Origin						
Enroute	0			6		6
Destination				30	5	35
	0			36	5	41

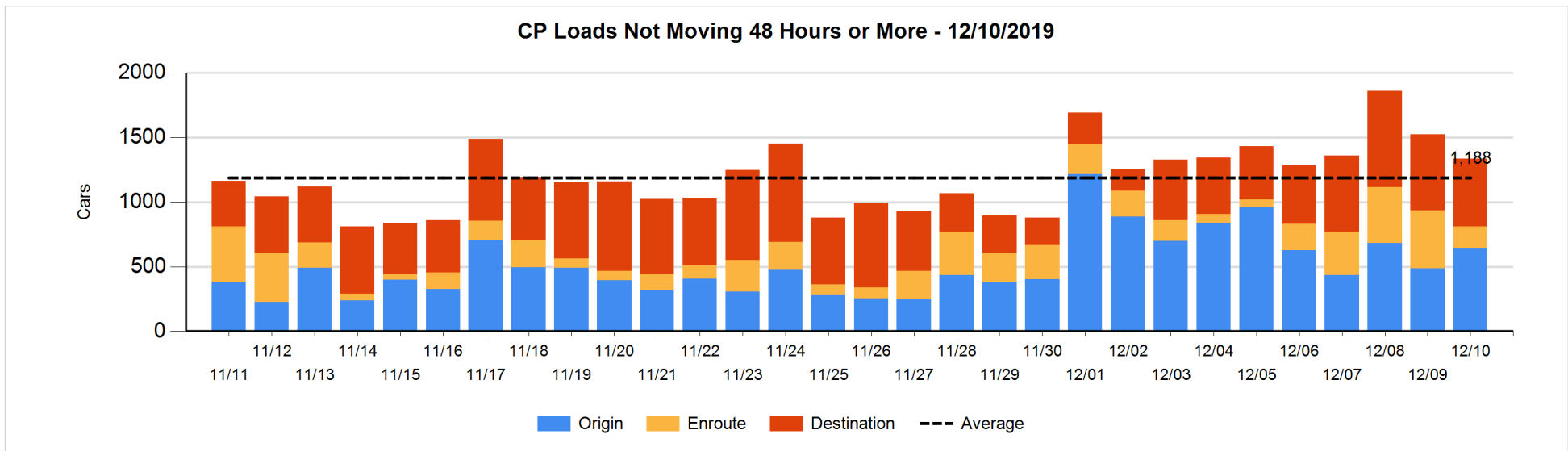
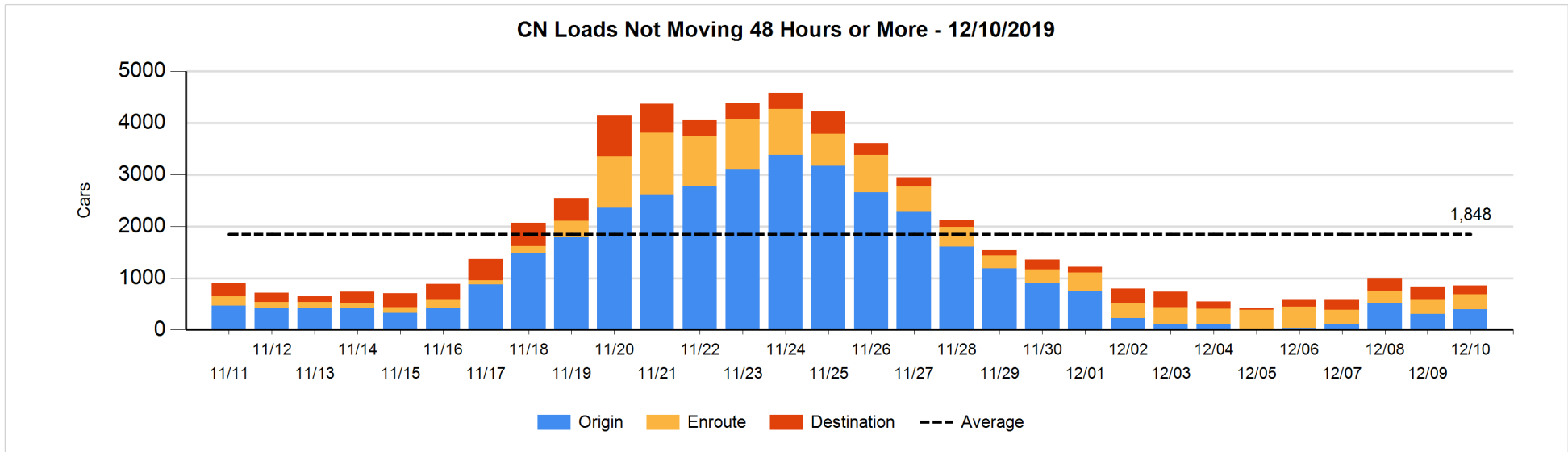


Loads Not Moving 48 Hours or More - 12/10/2019

	E Canada	Prince Rupert	Thunder Bay	USA/MEX	Vancouver	Total
CN						
Origin		200			198	398
Enroute	140	133	3	2	11	289
Destination	40	89	20	5	13	167
	180	422	23	7	222	854
CP						
Origin	1		197	21	420	639
Enroute			106	1	64	171
Destination			277	10	240	527
	1		580	32	724	1337
US Rail / Short Line						
Origin						
Enroute	97			24		121
Destination				4	17	21
	97			28	17	142

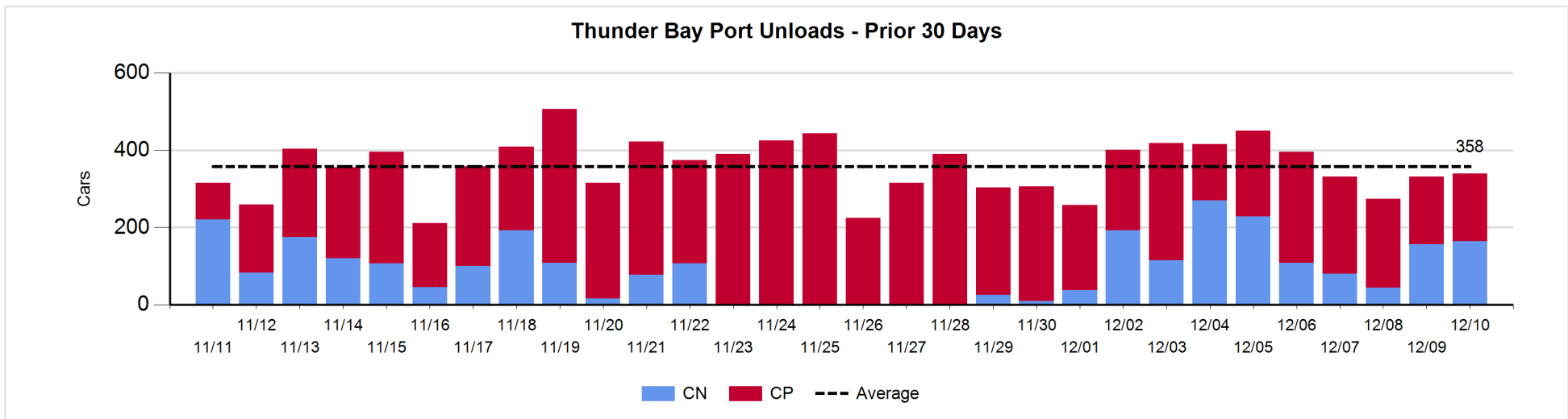
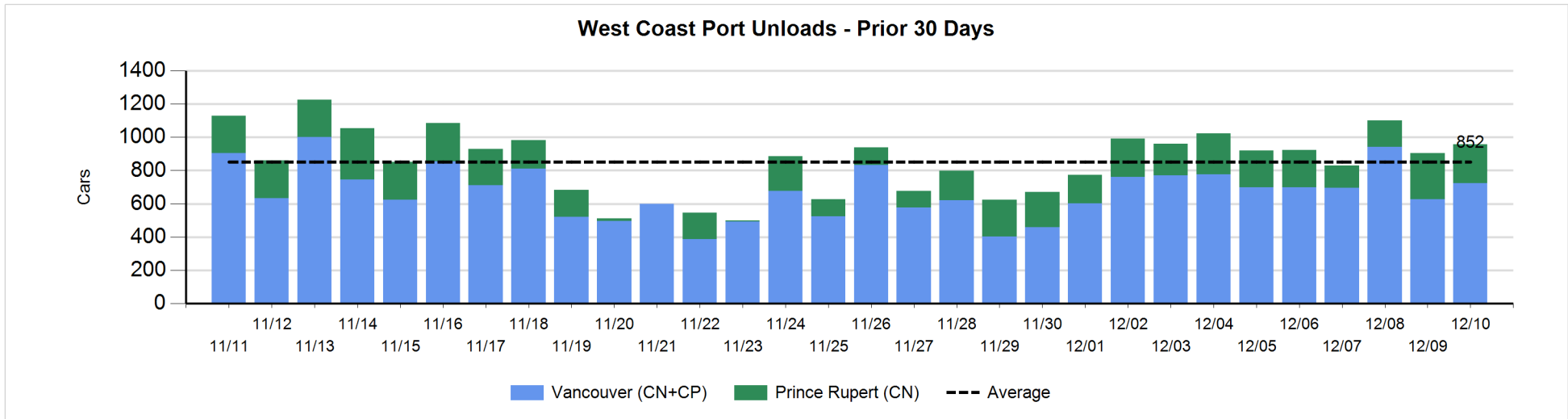
Change in Loads Not Moving 48 Hours or More - 12/10/2019

	E Canada	Prince Rupert	Thunder Bay	USA/MEX	Vancouver	Total
CN						
Origin		0			98	98
Enroute	14	0	0	1	-1	14
Destination	-3	-6	-67	-1	-21	-98
	11	-6	-67	0	76	14
CP						
Origin	0		-27	-1	181	153
Enroute	-4		-127	-1	-145	-277
Destination			-92	10	20	-62
	-4		-246	8	56	-186
US Rail / Short Line						
Origin						
Enroute	97			-3		94
Destination				0	-2	-2
	97			-3	-2	92



Port Unloads - 12/10/2019

	Prince Rupert	Vancouver	West Coast Total	Thunder Bay	Total
CN	233	435	668	164	832
CP		289	289	176	465
	233	724	957	340	1,297



Port Terminal Status

Vancouver

Daily Activity for 12/10/2019

	Cars Arrived	Cars Received in Interchange	Cars Delivered in Interchange	Cars Placed for Unloading	Loads on Wheels at Destination As of 12/10/2019
CN	447	107	40	387	586
CP	365	40	115	367	886
SRY		8		17	67

Port Unloads

	12/10	12/09	Week To Date	Last Week
CN	435	272	707	2,402
CP	289	354	643	2,943
SRY	17	14	31	52

Age Profile of Loaded Cars Waiting Placement for Unloading

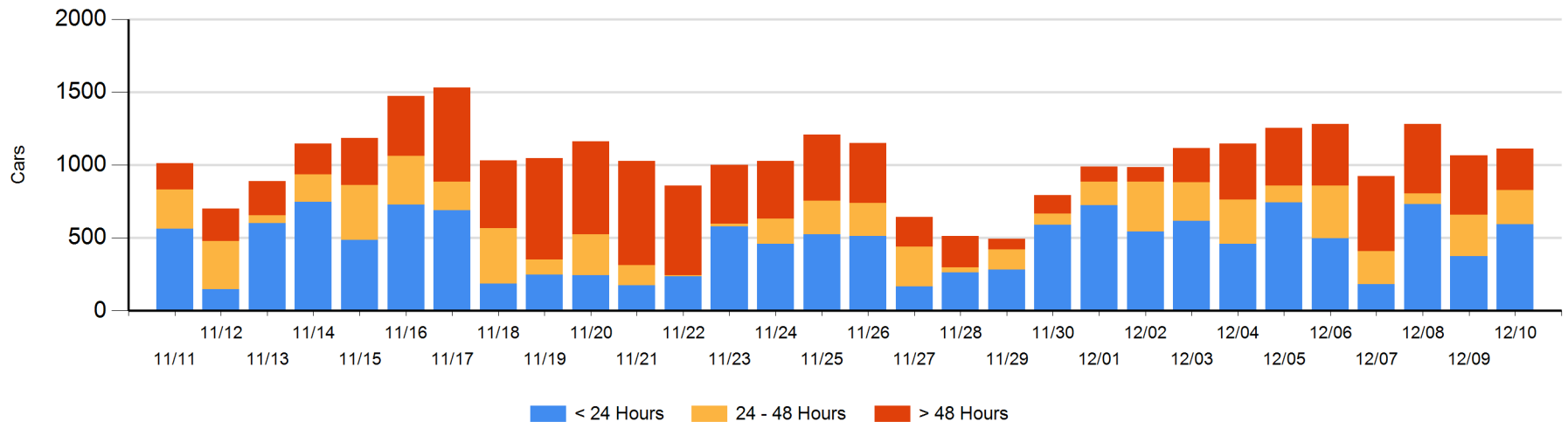
Today

	< 24 Hrs	24 - 48 Hrs	> 48-72 Hrs	> 72 Hrs	Total On Hand
CN	344	166	31	56	597
CP	251	68	44	151	514
SRY				1	1

Change in Last 24 Hours

	< 24 Hrs	24-48 Hrs	48 - 72 Hrs	> 72 Hrs
CN	164	-15	4	7
CP	58	-35	38	-175
SRY				0

Loaded Cars on Hand Vancouver Waiting for Placement - Last 30 Days All Railways



Port Terminal Status

Prince Rupert

Daily Activity for 12/10/2019

	Cars Arrived	Cars Received in Interchange	Cars Delivered in Interchange	Cars Placed for Unloading	Loads on Wheels at Destination As of 12/10/2019
CN	52			52	95

Port Unloads

	12/10	12/09	Week To Date	Last Week
CN	233	278	511	1,400

Age Profile of Loaded Cars Waiting Placement for Unloading

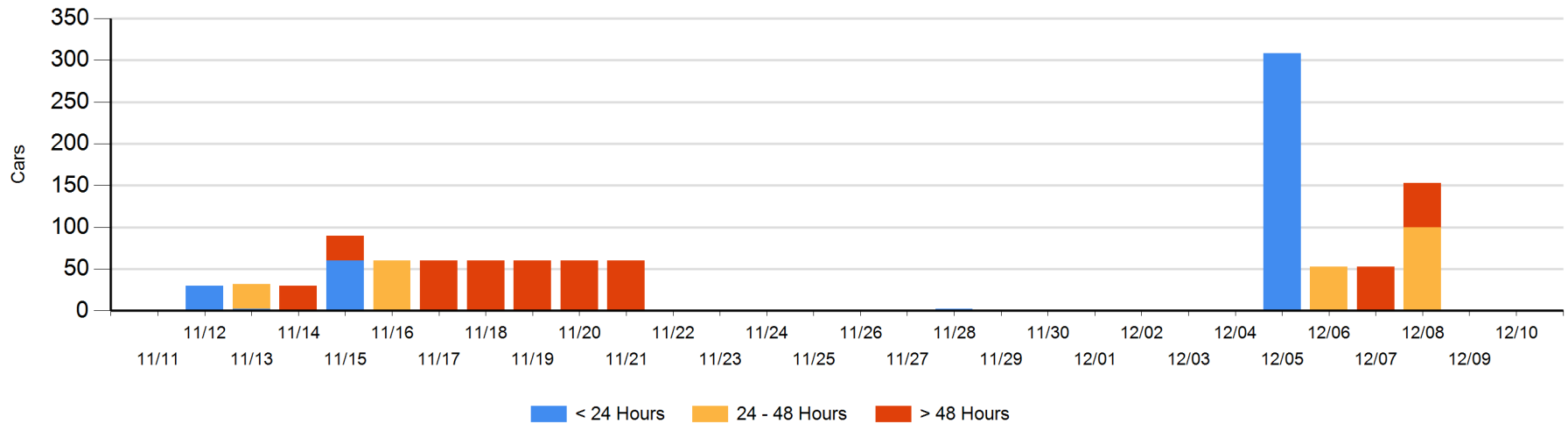
Today

	< 24 Hrs	24 - 48 Hrs	> 48-72 Hrs	> 72 Hrs	Total On Hand
CN					0

Change in Last 24 Hours

	< 24 Hrs	24-48 Hrs	48 - 72 Hrs	> 72 Hrs
CN				

Loaded Cars on Hand Prince Rupert Waiting for Placement - Last 30 Days All Railways



Port Terminal Status

Thunder Bay

Daily Activity for 12/10/2019

	Cars Arrived	Cars Received in Interchange	Cars Delivered in Interchange	Cars Placed for Unloading	Loads on Wheels at Destination As of 12/10/2019
CN				150	287
CP	301			167	844

Port Unloads

	12/10	12/09	Week To Date	Last Week
CN	164	156	320	1,039
CP	176	176	352	1,649

Age Profile of Loaded Cars Waiting Placement for Unloading

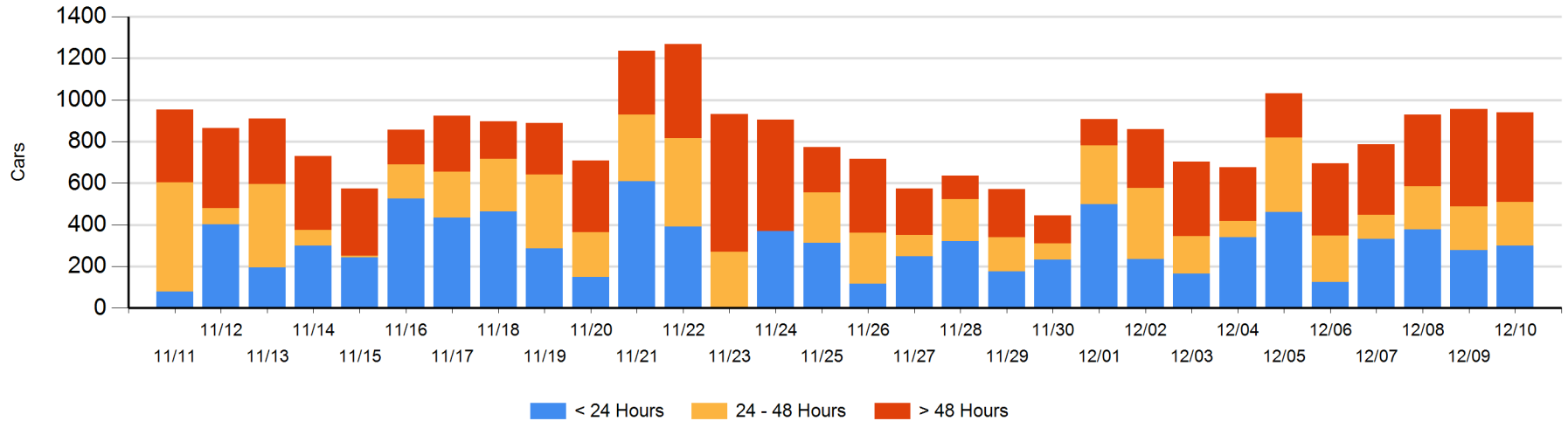
Today

	< 24 Hrs	24 - 48 Hrs	> 48-72 Hrs	> 72 Hrs	Total On Hand
CN		100		58	158
CP	301	109	107	264	781

Change in Last 24 Hours

	< 24 Hrs	24-48 Hrs	48 - 72 Hrs	> 72 Hrs
CN	-141	-4	-56	51
CP	164	2	11	-43

Loaded Cars on Hand Thunder Bay Waiting for Placement - Last 30 Days All Railways



Measurement Definitions

Loads on Wheels	<p>Count of loaded rail cars including all rail cars that have been released loaded at origin and have not been reported by the railway as unloaded at destination.</p> <p>Counts include all rail cars (hopper cars and boxcars) moving within a pipeline.</p>
Loads Not Moving	<p>Loaded rail cars for which the railways have not reported a movement event for 48 hours or more whether the rail car is at origin, enroute or at destination.</p>
Port Unloads	<p>Count of rail cars reported by railways as unloaded at the western port destinations of Vancouver, Prince Rupert and Thunder Bay.</p> <p>Unload counts include all rail cars (hopper cars and boxcars) unloaded by all receivers including major port terminals, transloaders and other receivers.</p>
Cars Arrived	<p>Count of rail cars reported as arrived at the destination railway terminal.</p>
Cars Received in Interchange	<p>Count of rail cars received in interchange by each railway within a destination railway terminal. Interchange activity is tracked for the Vancouver and Thunder Bay pipelines as applicable.</p>
Cars Delivered in Interchange	<p>Count of rail cars delivered in interchange by each railway within a destination railway terminal. Interchange activity is tracked for the Vancouver and Thunder Bay pipelines as applicable.</p>
Cars Placed for Unloading	<p>Count of rail cars reported by the railways as placed loaded at the receiver's facility for unloading.</p>
Loads on Wheels at Destination	<p>Count of rail cars that remain under load within the destination railway terminal including rail cars that have been reported as placed for unloading but not yet reported as unloaded.</p>
Waiting Placement for Unloading	<p>Count of rail cars that have been reported as arrived at the destination railway terminal but not reported as placed for unloading by the railway.</p> <p>For the Ports of Vancouver, Prince Rupert and Thunder Bay the count of rail cars waiting placement for unloading is categorized by age – i.e. the elapsed time from arrival at destination to the current report date.</p>