

SPEED READ

- Loads on wheels declined overnight, marking reduced CP volumes offset by a rise in CN volumes. On a net basis, volumes declined due to reduced volumes in the Vancouver, Thunder Bay and USA/MEX corridors offset by higher volumes in the Prince Rupert and E. Canada corridors.
- Network fluidity deteriorated overnight, led by a rise in idle car counts on CN by 30% (+255) offset by a decline in idle car counts on CP by 0% (-6). The total count of cars for 4+ days on both railways declined 11% (-112) overnight - currently at 932 cars.
- Three days in Week 19 unloads now behind prior week's performance by more than 250 unloads, marking reduced unloads across all three major ports - Vancouver, Thunder Bay and Prince Rupert.

=====

Loads on Wheels

- Loads on wheels declined 6% (-660) overnight, due to reduced volumes on CP offset by higher volumes on CN - combined total at 10,866 and 4% below the trailing 30-day average.
- On a net basis, the decline in loads on wheels indicates reduced volumes in the Vancouver, Thunder Bay and USA/MEX corridors offset by higher volumes in the Prince Rupert and E. Canada corridors.
- CN volumes gained slightly by 1% (+61) overnight, with higher traffic in the Prince Rupert, E. Canada and Thunder Bay corridors offset by reduced volumes in the Vancouver and USA/MEX corridors. System wide CN loads on wheels presently at 5,355 and 8% below the trailing 30-day average.
- CP volumes declined 13% (-743) overnight, driven by a decline in volumes across all corridors. CP system wide loads on wheels currently at 5,138 and 4% below the trailing 30-day average.
- Vancouver now at 5,415, declined 8% (-503) overnight, now 5% below the trailing 30-day average.
- The Prince Rupert pipeline currently at 1,444, gained 12% (+159) overnight, and 14% below the trailing 30-day average.
- Thunder Bay volumes declined 13% (-375) overnight - currently at 2,442 and 7% below the trailing 30-day average, with 71% of traffic moving on CP.

Hopper Car Rationing

- CN cancelled 4,624 hopper car orders for week 17 as it attempts to recover from the 8 day labour disruption. No hopper cars were rationed or cancelled by CP in week 17

Loads Not Moving

- **The count of cars not moving for 48+ hours gained 11% (+249) overnight, marking higher counts on CN offset by reduced counts on CP. Idle car counts now at 2,590 and 15% below the trailing 30-day average.**
- CN
 - **The count of idle cars for 48+ hours increased 30% (+255) overnight - currently at 1,109 cars.**
 - The number of cars idle for 4+ days increased 30% (+130) overnight - currently at 567 cars.
 - The count of cars not moving for 7+ days increased 2% (+2) overnight - currently at 133 cars.
 - Vancouver represents 21% of all idle cars.
 - In total 36% of all idle cars are dwelling at origin locations.
- CP
 - **CP idle car counts for 48+ hours decreased for the third consecutive day, down (-6) overnight - presently at 1,481 cars.**
 - The number of cars idle for 4+ days declined 40% (-242) overnight - currently at 365 cars.

- The number of cars idle for 7+ days declined for the fourth consecutive day, down 2% (-2) overnight - currently at 86 cars.
- Vancouver accounts for 73% of all idle cars.
- In total 58% of all idle cars are dwelling at origin locations.

Port Performance

- CN and CP reported a total of 1,385 cars unloaded at the three major ports, 15% above the trailing 30-day average. Three days in Week 19 unloads now behind last week's pace by more than 250 unloads, marking reduced unloads across all three major ports - Vancouver, Thunder Bay and Prince Rupert.
- Vancouver
 - 879 unloads reported by CN and CP at the Port of Vancouver; CN - 423 and CP - 456. Three days in Week 19 unloads are tracking behind last week's performance by 50 unloads.
 - There are more than 1,400 cars on site at Vancouver with 900 cars arriving at the port in the last 24 hours.
 - CN and CP have more than 900 cars in British Columbia en route to Vancouver, with more than 650 cars at Kamloops and west, and 55% of traffic moving on CN.
- Prince Rupert
 - Prince Rupert reported 80 unloads, now behind last week's unloads after three days by more than 50 unloads.
 - Loads on wheels remain above 1,000 cars - currently at 1,444 cars.
 - There are fewer than 350 cars west of Jasper en route to Prince Rupert.
 - There are 300 cars on site at Prince Rupert with more than 200 cars arriving at the port in the last 24 hours.
- Thunder Bay
 - 426 unloads were reported at Thunder Bay yesterday. Three days in Week 19 unloads are tracking behind last week's pace by less than 150 unloads.
 - There are less than 950 cars on site at Thunder Bay with less than 250 cars arriving at the port in the prior 24 hours.
 - There are 400 cars en route to Thunder Bay from Winnipeg and east.

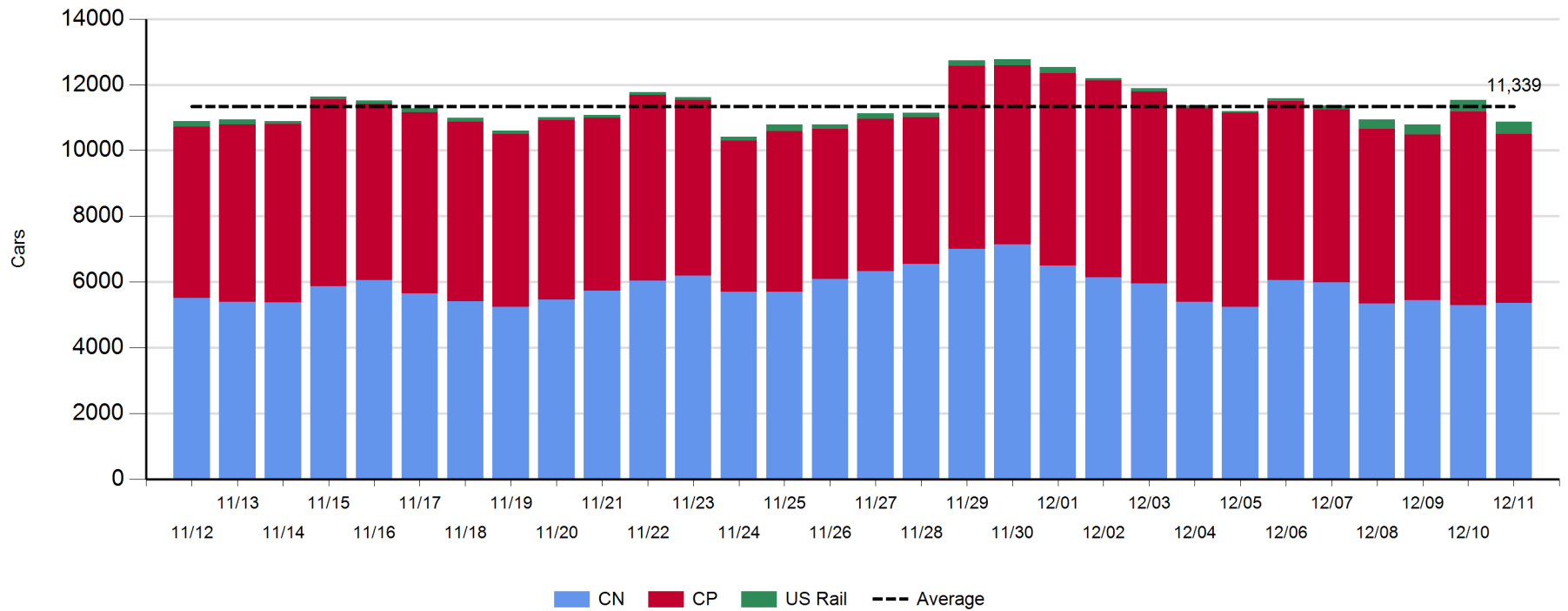
Daily Loads on Wheels - 12/11/2019

	E Canada	Prince Rupert	Thunder Bay	USA/MEX	Vancouver	Total
CN	894	1,444	706	160	2,151	5,355
CP	11		1,736	186	3,205	5,138
Short Line	125				59	184
US Rail				189		189
	1,030	1,444	2,442	535	5,415	10,866

Change in Loads on Wheels - Prior 24 Hours

	E Canada	Prince Rupert	Thunder Bay	USA/MEX	Vancouver	Total
CN	66	159	9	-3	-170	61
CP	-23		-384	-11	-325	-743
Short Line	28				-8	20
US Rail				2		2
	71	159	-375	-12	-503	-660

Loads on Wheels - Prior 30 Days



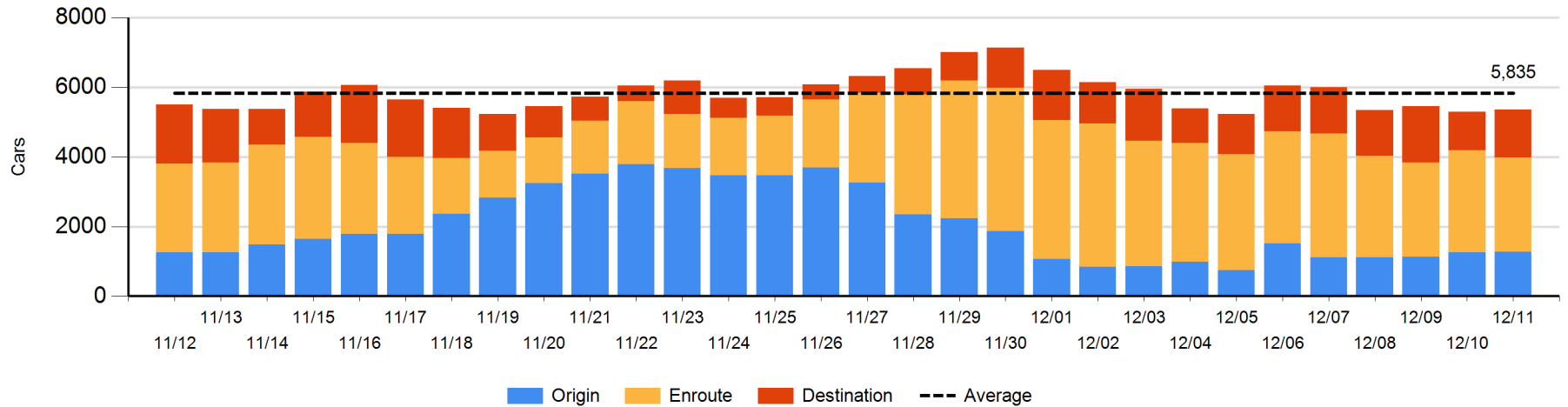
Daily Loads on Wheels By Pipeline Location - 12/11/2019

	E Canada	Prince Rupert	Thunder Bay	USA/MEX	Vancouver	Total
CN						
Origin	219	629	52	43	330	1,273
Enroute	507	512	308	105	1,277	2,709
Destination	168	303	346	12	544	1,373
	894	1,444	706	160	2,151	5,355
CP						
Origin	4		467	72	1,365	1,908
Enroute	6		676	114	1,021	1,817
Destination	1		593		819	1,413
	11		1,736	186	3,205	5,138
US Rail / Short Line						
Origin						
Enroute	97			139		236
Destination	28			50	59	137
	125			189	59	373

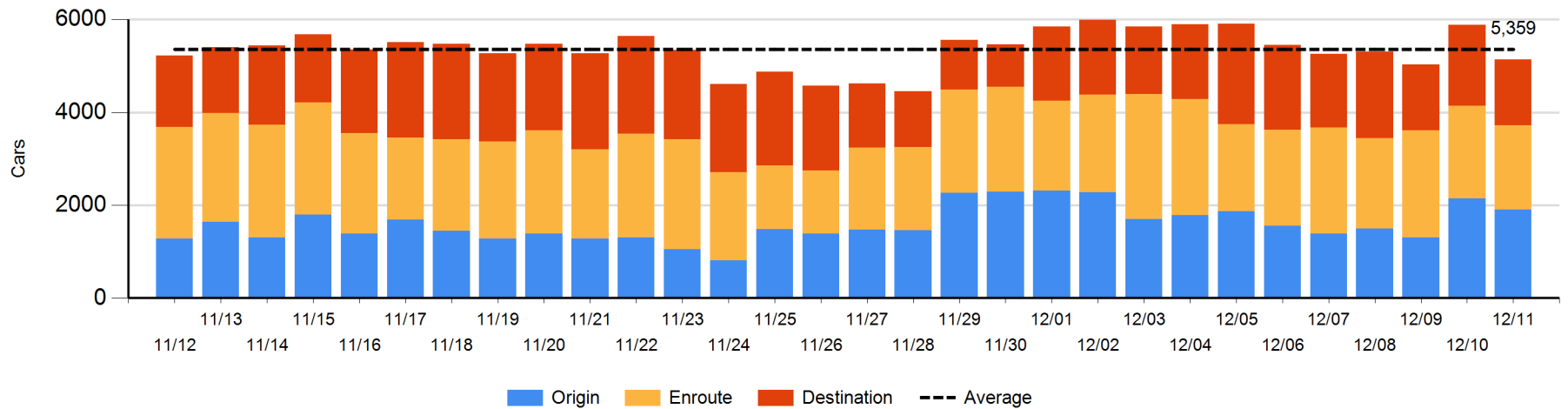
Change in Daily Loads on Wheels By Pipeline Location - Prior 24 Hours

	E Canada	Prince Rupert	Thunder Bay	USA/MEX	Vancouver	Total
CN						
Origin	-22	239	-48	-36	-123	10
Enroute	27	-288	-2	43	1	-219
Destination	61	208	59	-10	-48	270
	66	159	9	-3	-170	61
CP						
Origin	3		-244	1	0	-240
Enroute	-26		111	-2	-259	-176
Destination	0		-251	-10	-66	-327
	-23		-384	-11	-325	-743
US Rail / Short Line						
Origin						
Enroute	0			-10		-10
Destination	28			12	-8	32
	28			2	-8	22

CN Loads on Wheels by Pipeline Location - 12/11/2019



CP Loads on Wheels by Pipeline Location - 12/11/2019

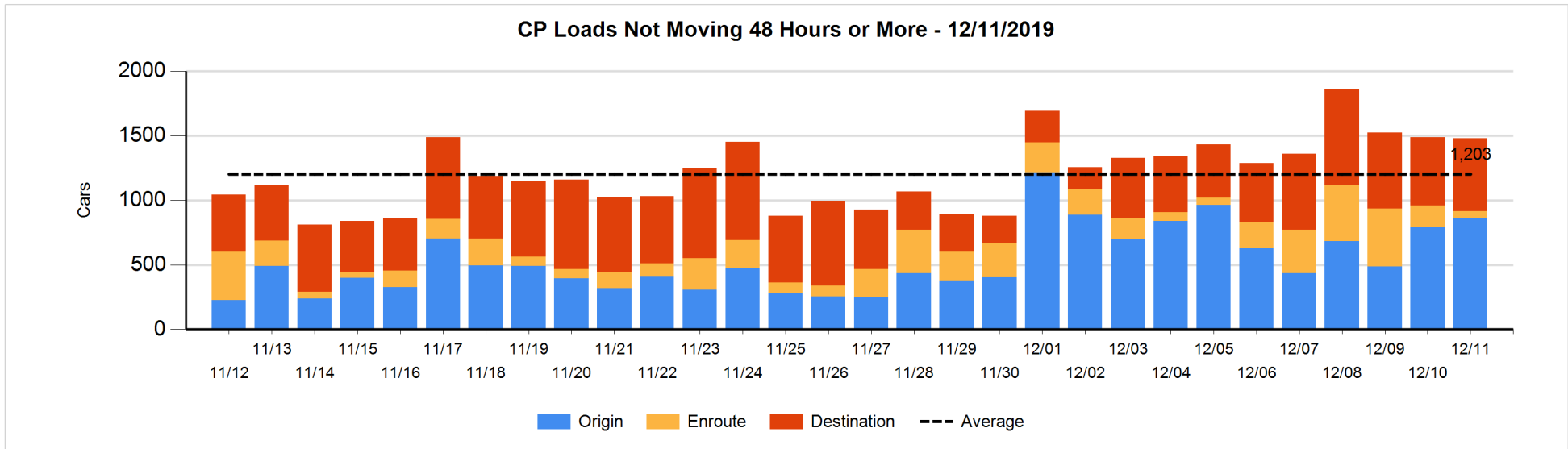
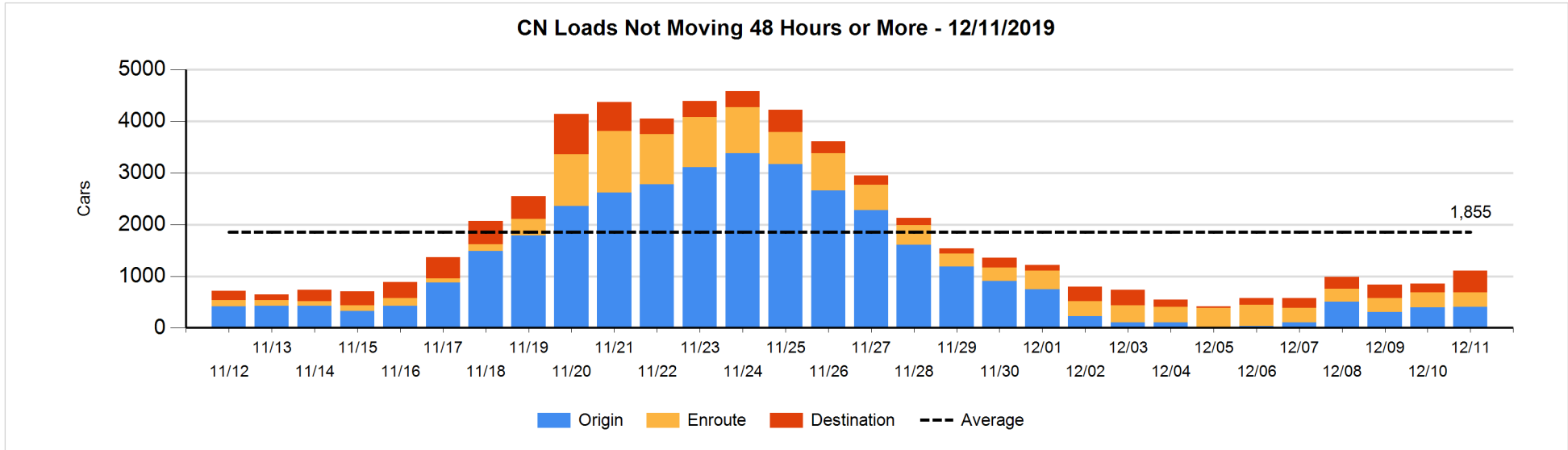


Loads Not Moving 48 Hours or More - 12/11/2019

	E Canada	Prince Rupert	Thunder Bay	USA/MEX	Vancouver	Total
CN						
Origin		300			100	400
Enroute	117	4	46	4	113	284
Destination	67	94	240	5	19	425
	184	398	286	9	232	1109
CP						
Origin	1		119	21	721	862
Enroute	1		25		26	52
Destination			232		335	567
	2		376	21	1082	1481
US Rail / Short Line						
Origin						
Enroute	97			21		118
Destination				4	8	12
	97			25	8	130

Change in Loads Not Moving 48 Hours or More - 12/11/2019

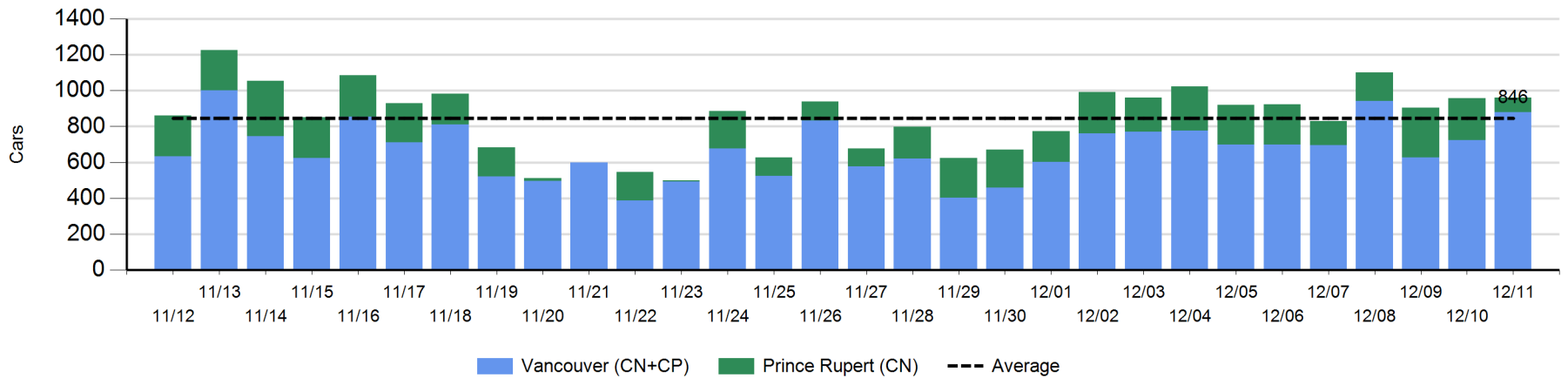
	E Canada	Prince Rupert	Thunder Bay	USA/MEX	Vancouver	Total
CN						
Origin		100			-98	2
Enroute	-23	-129	43	2	102	-5
Destination	27	5	220	0	6	258
	4	-24	263	2	10	255
CP						
Origin	0		-133	0	206	73
Enroute	1		-81	-1	-38	-119
Destination			-45	-10	95	40
	1		-259	-11	263	-6
US Rail / Short Line						
Origin						
Enroute	0			-2		-2
Destination				0	-9	-9
	0			-2	-9	-11



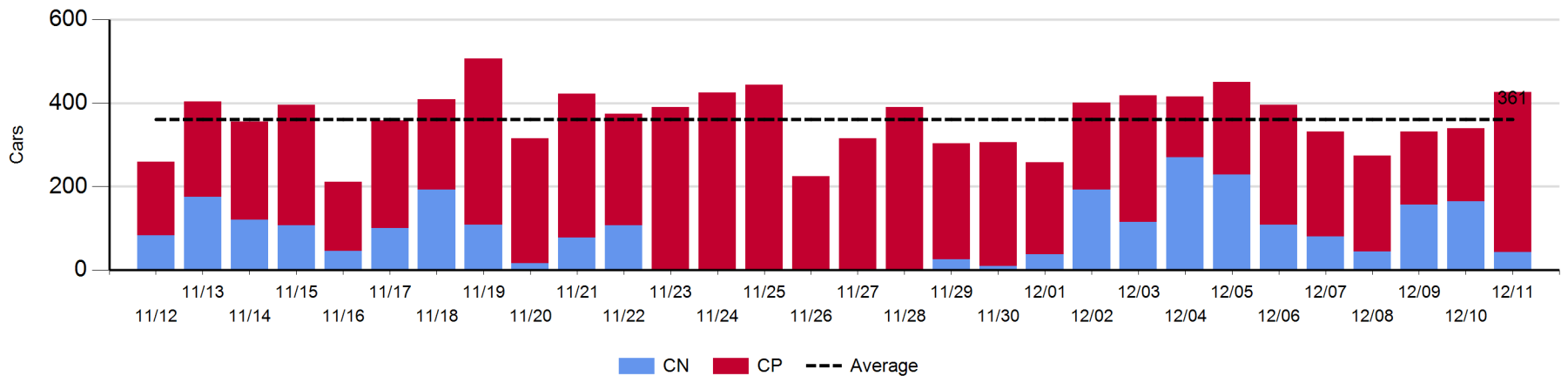
Port Unloads - 12/11/2019

	Prince Rupert	Vancouver	West Coast Total	Thunder Bay	Total
CN	80	423	503	43	546
CP		456	456	383	839
	80	879	959	426	1,385

West Coast Port Unloads - Prior 30 Days



Thunder Bay Port Unloads - Prior 30 Days



Port Terminal Status

Vancouver

Daily Activity for 12/11/2019

	Cars Arrived	Cars Received in Interchange	Cars Delivered in Interchange	Cars Placed for Unloading	Loads on Wheels at Destination As of 12/11/2019
CN	373	261	102	358	544
CP	520	102	272	326	820
SRY	1	11		14	59

Port Unloads

	12/11	12/10	Week To Date	Last Week
CN	423	435	1,130	2,402
CP	456	289	1,099	2,943
SRY	14	17	45	52

Age Profile of Loaded Cars Waiting Placement for Unloading

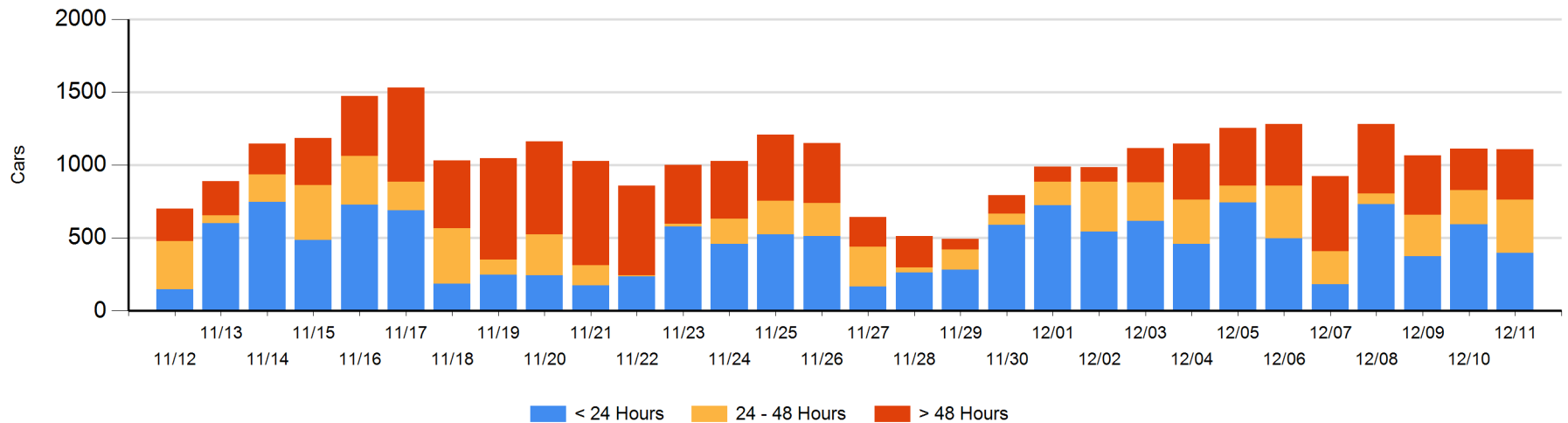
Today

	< 24 Hrs	24 - 48 Hrs	> 48-72 Hrs	> 72 Hrs	Total On Hand
CN	249	177	86	66	578
CP	148	187	68	127	530
SRY					0

Change in Last 24 Hours

	< 24 Hrs	24-48 Hrs	48 - 72 Hrs	> 72 Hrs
CN	-95	11	55	10
CP	-103	119	24	-24
SRY				-1

Loaded Cars on Hand Vancouver Waiting for Placement - Last 30 Days All Railways



Port Terminal Status

Prince Rupert

Daily Activity for 12/11/2019

	Cars Arrived	Cars Received in Interchange	Cars Delivered in Interchange	Cars Placed for Unloading	Loads on Wheels at Destination As of 12/11/2019
CN	221			221	303

Port Unloads

	12/11	12/10	Week To Date	Last Week
CN	80	233	591	1,400

Age Profile of Loaded Cars Waiting Placement for Unloading

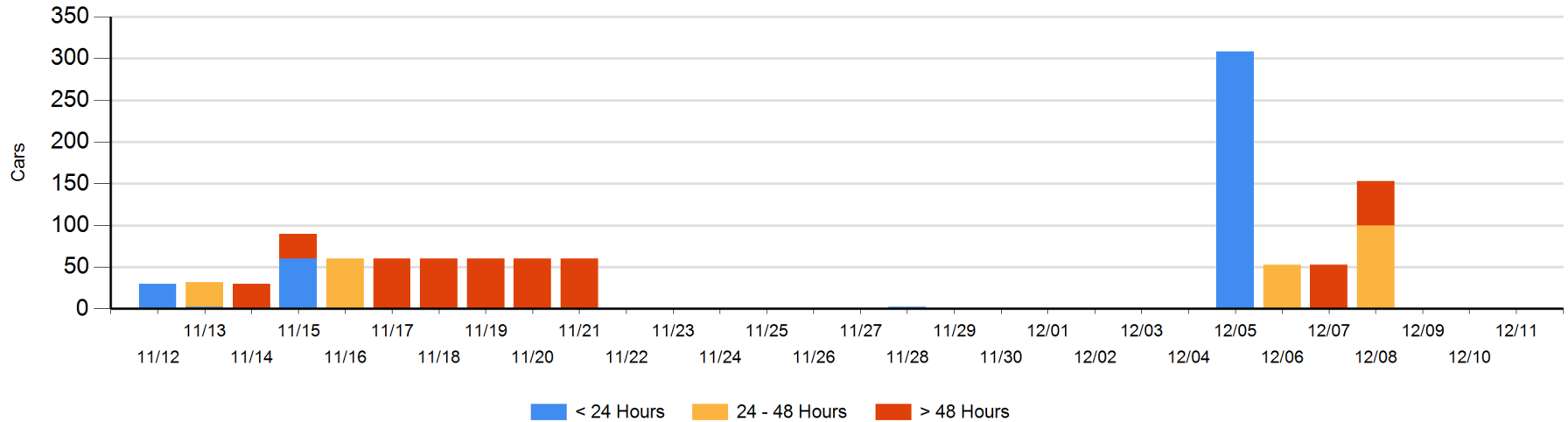
Today

	< 24 Hrs	24 - 48 Hrs	> 48-72 Hrs	> 72 Hrs	Total On Hand
CN					0

Change in Last 24 Hours

	< 24 Hrs	24-48 Hrs	48 - 72 Hrs	> 72 Hrs
CN				

Loaded Cars on Hand Prince Rupert Waiting for Placement - Last 30 Days All Railways



Port Terminal Status

Thunder Bay

Daily Activity for 12/11/2019

	Cars Arrived	Cars Received in Interchange	Cars Delivered in Interchange	Cars Placed for Unloading	Loads on Wheels at Destination As of 12/11/2019
CN	102				346
CP	134			379	593

Port Unloads

	12/11	12/10	Week To Date	Last Week
CN	43	164	363	1,039
CP	383	176	735	1,649

Age Profile of Loaded Cars Waiting Placement for Unloading

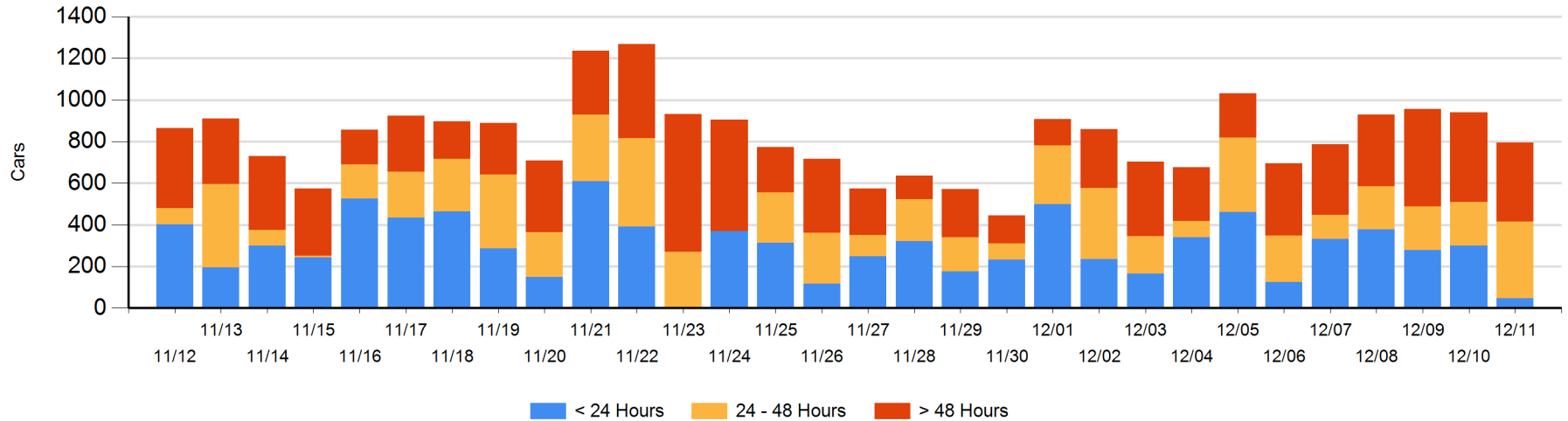
Today

	< 24 Hrs	24 - 48 Hrs	> 48-72 Hrs	> 72 Hrs	Total On Hand
CN		102	100	58	260
CP	47	267	56	166	536

Change in Last 24 Hours

	< 24 Hrs	24-48 Hrs	48 - 72 Hrs	> 72 Hrs
CN		2	100	0
CP	-254	158	-51	-98

Loaded Cars on Hand Thunder Bay Waiting for Placement - Last 30 Days All Railways



Measurement Definitions

Loads on Wheels	<p>Count of loaded rail cars including all rail cars that have been released loaded at origin and have not been reported by the railway as unloaded at destination.</p> <p>Counts include all rail cars (hopper cars and boxcars) moving within a pipeline.</p>
Loads Not Moving	<p>Loaded rail cars for which the railways have not reported a movement event for 48 hours or more whether the rail car is at origin, enroute or at destination.</p>
Port Unloads	<p>Count of rail cars reported by railways as unloaded at the western port destinations of Vancouver, Prince Rupert and Thunder Bay.</p> <p>Unload counts include all rail cars (hopper cars and boxcars) unloaded by all receivers including major port terminals, transloaders and other receivers.</p>
Cars Arrived	<p>Count of rail cars reported as arrived at the destination railway terminal.</p>
Cars Received in Interchange	<p>Count of rail cars received in interchange by each railway within a destination railway terminal. Interchange activity is tracked for the Vancouver and Thunder Bay pipelines as applicable.</p>
Cars Delivered in Interchange	<p>Count of rail cars delivered in interchange by each railway within a destination railway terminal. Interchange activity is tracked for the Vancouver and Thunder Bay pipelines as applicable.</p>
Cars Placed for Unloading	<p>Count of rail cars reported by the railways as placed loaded at the receiver's facility for unloading.</p>
Loads on Wheels at Destination	<p>Count of rail cars that remain under load within the destination railway terminal including rail cars that have been reported as placed for unloading but not yet reported as unloaded.</p>
Waiting Placement for Unloading	<p>Count of rail cars that have been reported as arrived at the destination railway terminal but not reported as placed for unloading by the railway.</p> <p>For the Ports of Vancouver, Prince Rupert and Thunder Bay the count of rail cars waiting placement for unloading is categorized by age – i.e. the elapsed time from arrival at destination to the current report date.</p>