

## SPEED READ

- Loads on wheels fell overnight, reflecting reduced CP traffic offset by a slight increase in CN volumes. On a net basis, volumes fell due to reduced traffic in the Vancouver, Thunder Bay and E. Canada corridors offset by higher traffic in the Prince Rupert and USA/MEX corridors.
- Network fluidity deteriorated overnight, led by an increase in idle car counts on both CN and CP by 47% (+517) and 65% (+513), respectively. The total count of cars for 4+ days on both railways increased 37% (+213) overnight - now at 783 cars.
- Week 19 unloads concluded behind prior week's performance by 450 unloads, reflecting reduced unloads across all three major ports - Vancouver, Thunder Bay and Prince Rupert.

---

## Loads on Wheels

- Loads on wheels fell 3% (-306) overnight, due to reduced traffic on CP offset by higher traffic on CN - combined total at 11,382 and in line with the trailing 30-day average.
- On a net basis, the decline in loads on wheels reflects reduced traffic in the Vancouver, Thunder Bay and E. Canada corridors offset by higher traffic in the Prince Rupert and USA/MEX corridors.
- CN volumes increased marginally by (+16) overnight, with higher traffic in the Prince Rupert corridor offset by lower traffic in all other corridors. System wide CN loads on wheels now at 6,326 and 7% above the trailing 30-day average.
- CP volumes declined 5% (-233) overnight, driven by a decline in traffic in the Thunder Bay and Vancouver corridors offset by an increase in traffic in the USA/MEX and E. Canada corridors. CP system wide loads on wheels now at 4,743 and 11% below the trailing 30-day average.
- Vancouver now at 5,093, fell 6% (-344) overnight, now 10% below the trailing 30-day average.
- The Prince Rupert pipeline now at 1,964, rose for the third consecutive day, up 17% (+281) overnight, and 18% above the trailing 30-day average.
- Thunder Bay volumes fell 8% (-231) overnight - now at 2,546 and 4% below the trailing 30-day average, with 63% of traffic moving on CP.

## Hopper Car Rationing

- CN cancelled 50 hopper car orders for week 18. No hopper cars were rationed or cancelled by CP in week 18

## Loads Not Moving

- **The count of cars not moving for 48+ hours rose significantly by 54% (+1,030) overnight, reflecting higher counts on both CN and CP. Idle car counts currently at 2,923 and 7% below the trailing 30-day average.**
- CN
  - **The count of idle cars for 48+ hours increased 47% (+517) overnight - now at 1,618 cars.**
  - The number of cars idle for 4+ days rose 23% (+93) overnight - currently at 496 cars.
  - The count of cars not moving for 7+ days fell 4% (-7) overnight - currently at 158 cars.
  - Vancouver represents 26% of all idle cars.
  - In total 63% of all idle cars are dwelling at origin locations.
- CP
  - **CP idle car counts for 48+ hours increased 65% (+513) overnight - now at 1,305 cars.**
  - The number of cars idle for 4+ days increased 72% (+120) overnight - currently at 287 cars.
  - The number of cars idle for 7+ days increased 53% (+27) overnight - currently at 78 cars.

- Vancouver accounts for 50% of all idle cars.
- In total 53% of all idle cars are dwelling at origin locations.

### **Port Performance**

- CN and CP reported a total of 1,169 cars unloaded at the three major ports, now 2% below the trailing 30-day average. Week 19 unloads concluded behind last week's pace by 450 unloads, reflecting reduced unloads across all three major ports - Vancouver, Thunder Bay and Prince Rupert.
- Vancouver
  - 853 unloads reported by CN and CP at the Port of Vancouver; CN - 474 and CP - 379. Week 19 unloads finished behind last week's performance by more than 50 unloads.
  - There are 1,150 cars on site at Vancouver with 650 cars arriving at the port in the last 24 hours.
  - CN and CP have more than 1,300 cars in British Columbia en route to Vancouver, with more than 750 cars at Kamloops and west, and 65% of traffic moving on CP.
- Prince Rupert
  - Prince Rupert reported 26 unloads, finished behind last week's unloads by more than 150 unloads.
  - Loads on wheels remain above 1,000 cars - currently at 1,964 cars.
  - There are more than 600 cars west of Jasper en route to Prince Rupert.
  - There are 3 cars on site at Prince Rupert with 26 cars arriving at the port in the last 24 hours.
- Thunder Bay
  - 290 unloads were reported at Thunder Bay yesterday. Week 19 unloads finished behind last week's pace by more than 200 unloads.
  - There are 1,050 cars on site at Thunder Bay with 450 cars arriving at the port in the prior 24 hours.
  - There are more than 450 cars en route to Thunder Bay from Winnipeg and east.

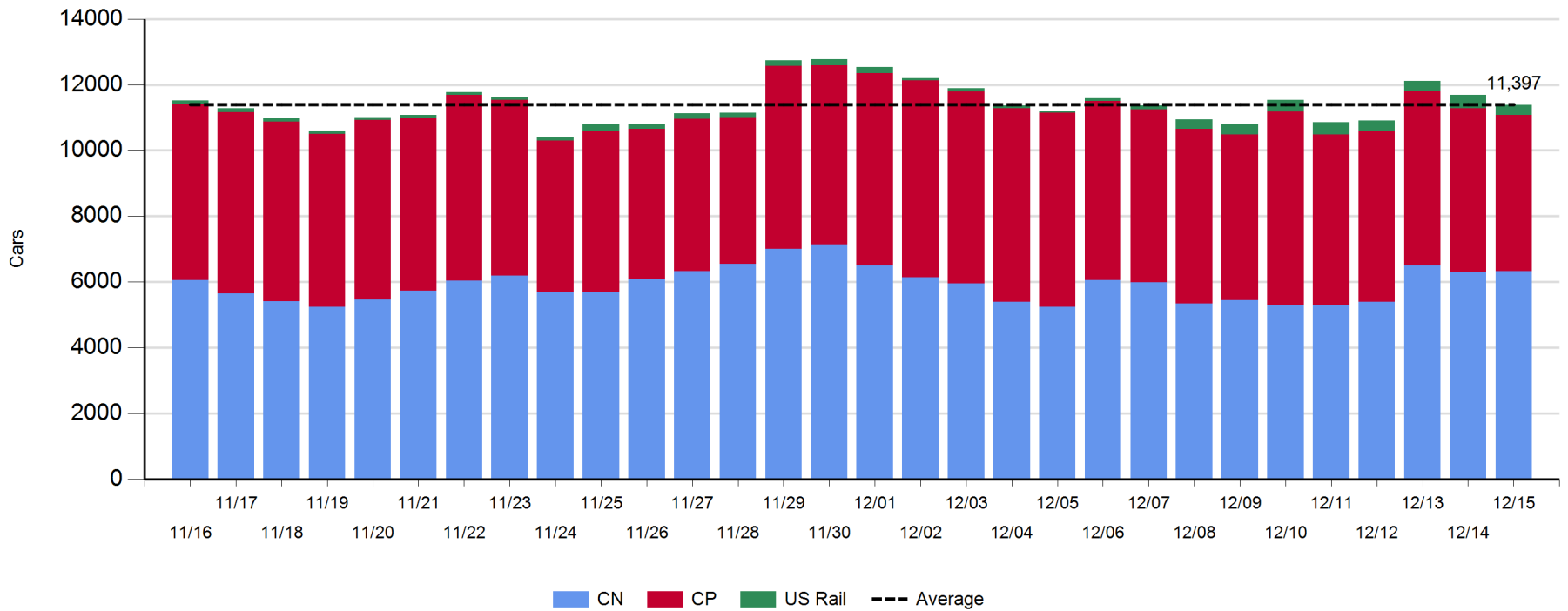
**Daily Loads on Wheels - 12/15/2019**

	E Canada	Prince Rupert	Thunder Bay	USA/MEX	Vancouver	Total
CN	837	1,964	935	206	2,384	6,326
CP	65		1,611	417	2,650	4,743
Short Line	63				59	122
US Rail				191		191
	965	1,964	2,546	814	5,093	11,382

**Change in Loads on Wheels - Prior 24 Hours**

	E Canada	Prince Rupert	Thunder Bay	USA/MEX	Vancouver	Total
CN	-15	281	-31	-2	-217	16
CP	1		-200	95	-129	-233
Short Line	-54				2	-52
US Rail				-37		-37
	-68	281	-231	56	-344	-306

**Loads on Wheels - Prior 30 Days**

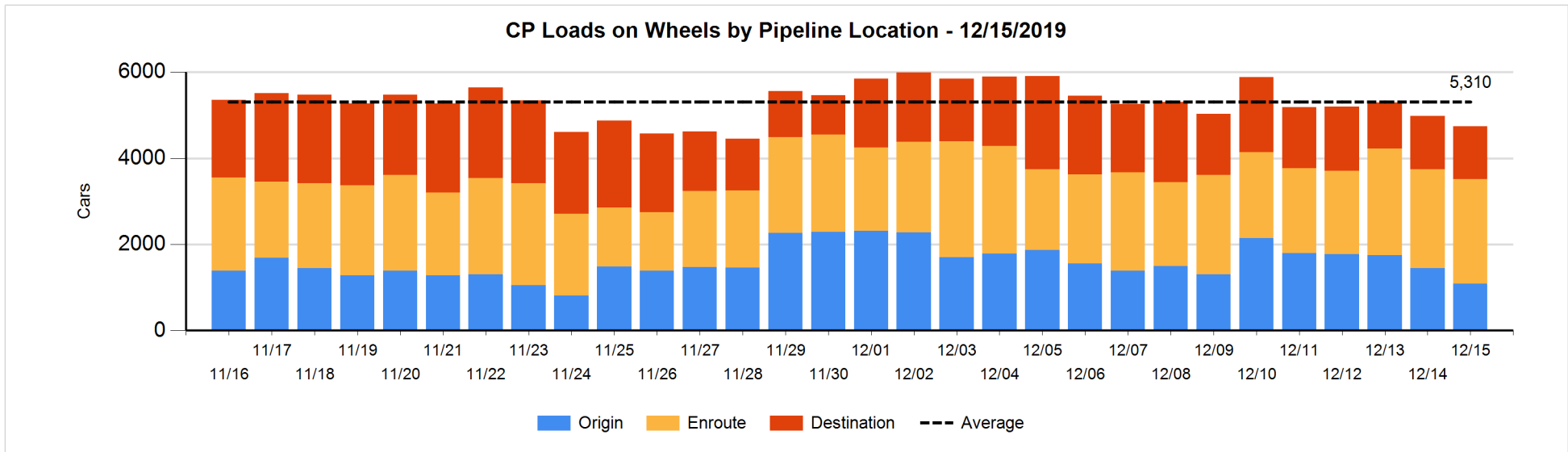
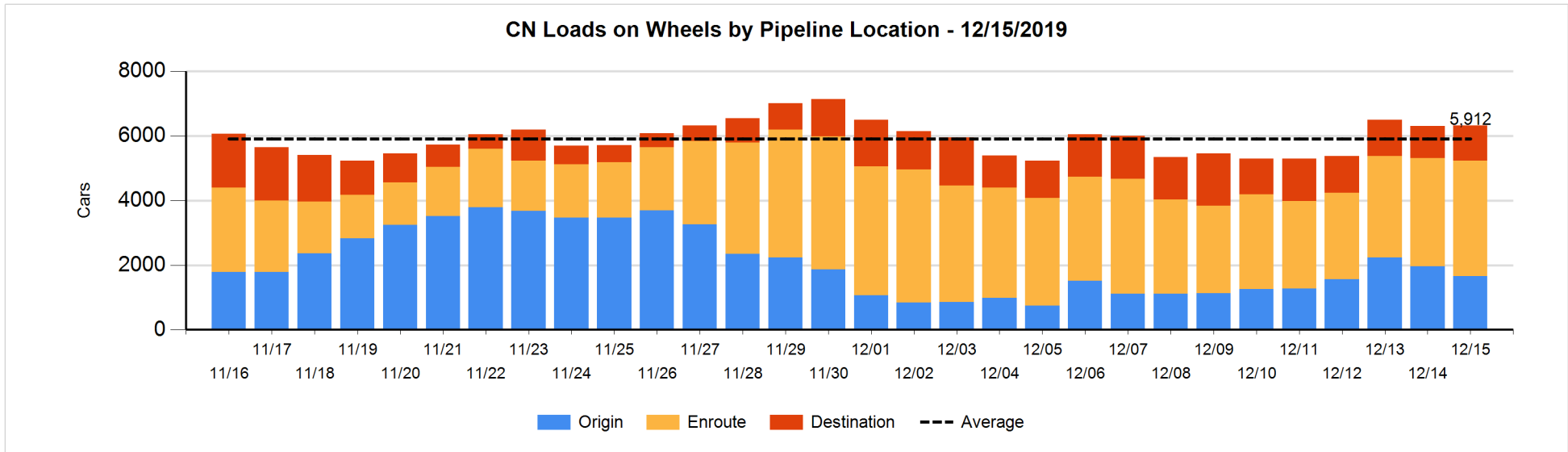


**Daily Loads on Wheels By Pipeline Location - 12/15/2019**

	E Canada	Prince Rupert	Thunder Bay	USA/MEX	Vancouver	Total
CN						
Origin	124	831	194	43	470	1,662
Enroute	543	1,130	434	156	1,312	3,575
Destination	170	3	307	7	602	1,089
	837	1,964	935	206	2,384	6,326
CP						
Origin	51		347	197	490	1,085
Enroute	14		525	220	1,667	2,426
Destination			739		493	1,232
	65		1,611	417	2,650	4,743
US Rail / Short Line						
Origin						
Enroute	61			75		136
Destination	2			116	59	177
	63			191	59	313

**Change in Daily Loads on Wheels By Pipeline Location - Prior 24 Hours**

	E Canada	Prince Rupert	Thunder Bay	USA/MEX	Vancouver	Total
CN						
Origin	-3	78	-147	0	-230	-302
Enroute	-129	206	80	0	69	226
Destination	117	-3	36	-2	-56	92
	-15	281	-31	-2	-217	16
CP						
Origin	0		-122	-1	-245	-368
Enroute	1		-222	96	265	140
Destination			144		-149	-5
	1		-200	95	-129	-233
US Rail / Short Line						
Origin						
Enroute	-51			4		-47
Destination	-3			-41	2	-42
	-54			-37	2	-89

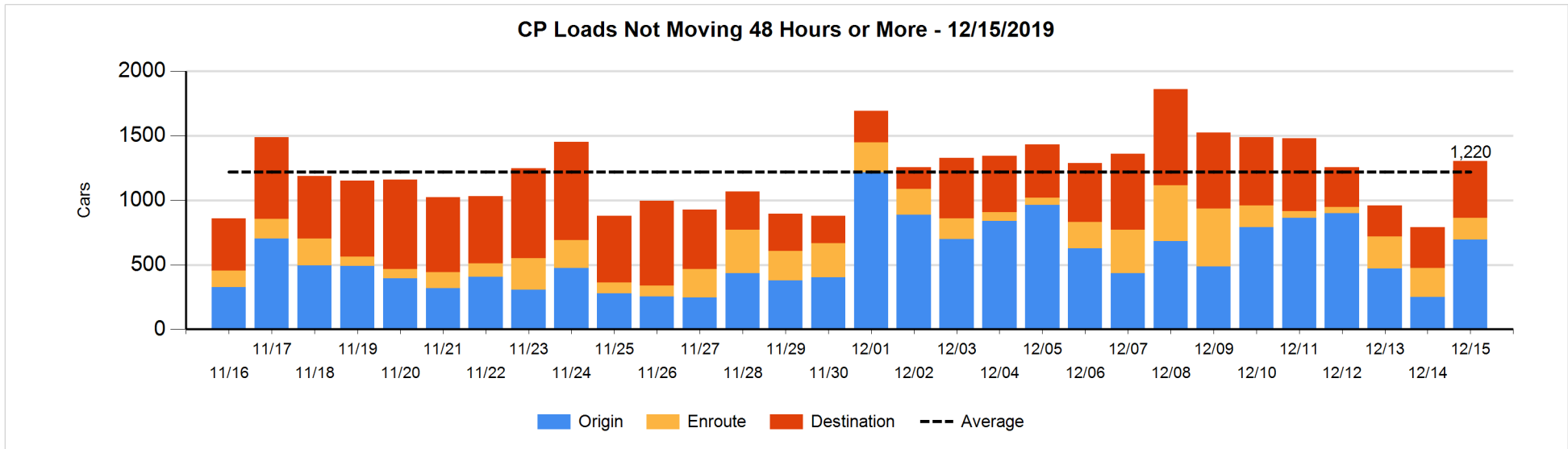
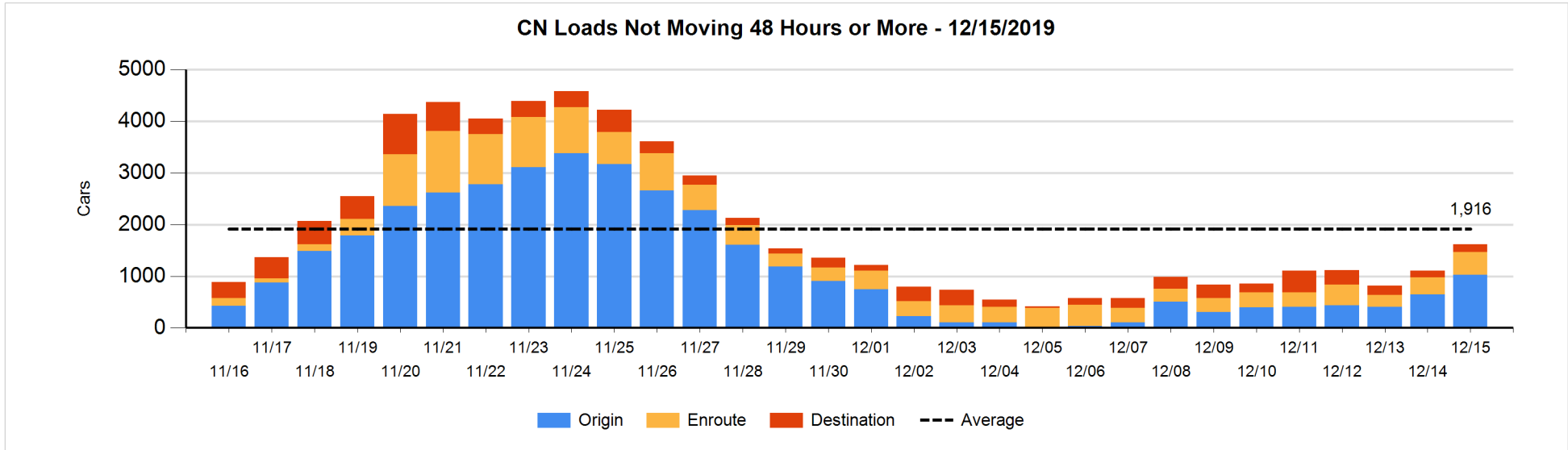


**Loads Not Moving 48 Hours or More - 12/15/2019**

	E Canada	Prince Rupert	Thunder Bay	USA/MEX	Vancouver	Total
CN						
Origin	49	626	100	43	204	1022
Enroute	172	67	43	31	131	444
Destination	25	3	35	3	86	152
	246	696	178	77	421	1618
CP						
Origin	27		113	197	359	696
Enroute	2		32	49	86	169
Destination			234		206	440
	29		379	246	651	1305
US Rail / Short Line						
Origin						
Enroute	60			49		109
Destination	2			27	37	66
	62			76	37	175

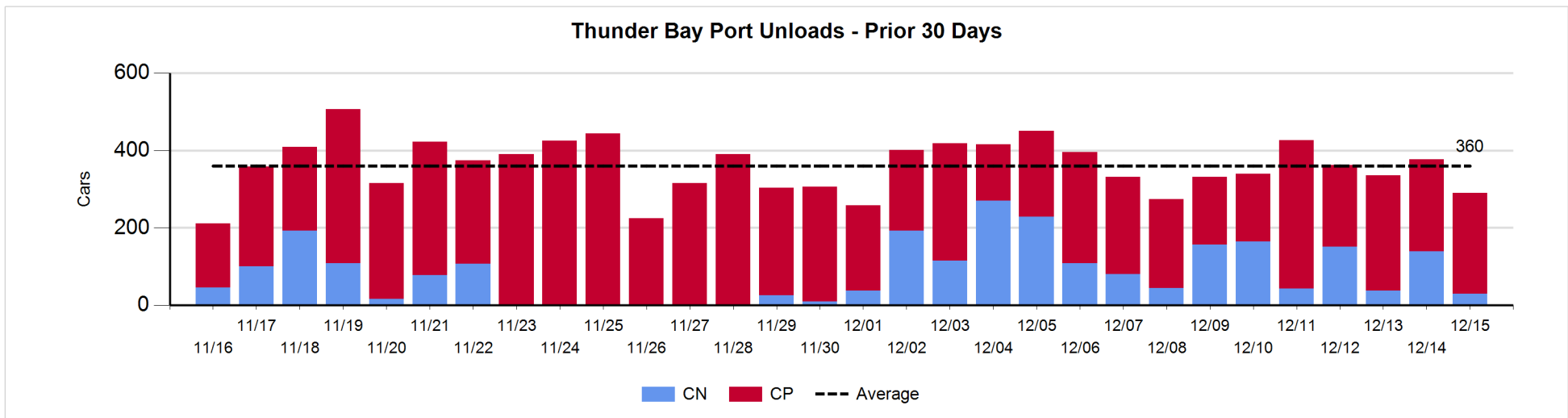
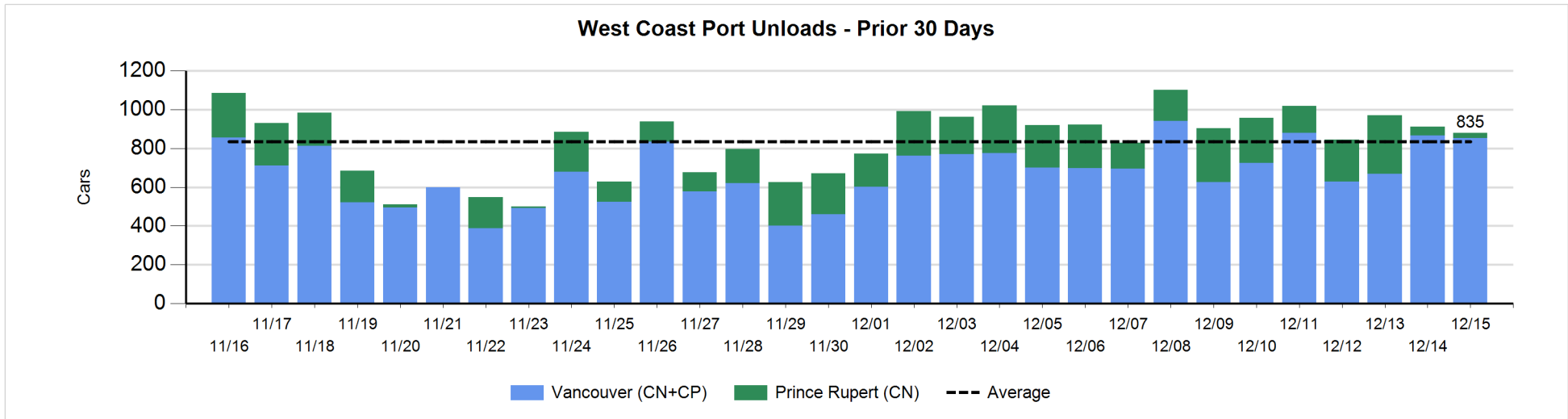
**Change in Loads Not Moving 48 Hours or More - 12/15/2019**

	E Canada	Prince Rupert	Thunder Bay	USA/MEX	Vancouver	Total
CN						
Origin	-3	398	100	0	-115	380
Enroute	74	-3	39	21	-24	107
Destination	1	-3	13	2	17	30
	72	392	152	23	-122	517
CP						
Origin	26		112	196	113	447
Enroute	2		-153	49	45	-57
Destination			27		96	123
	28		-14	245	254	513
US Rail / Short Line						
Origin						
Enroute	0			0		0
Destination	2			18	-8	12
	2			18	-8	12



Port Unloads - 12/15/2019

	Prince Rupert	Vancouver	West Coast Total	Thunder Bay	Total
CN	26	474	500	30	530
CP		379	379	260	639
	26	853	879	290	1,169





**Port Terminal Status**

**Vancouver**

Daily Activity for 12/15/2019

	Cars Arrived	Cars Received in Interchange	Cars Delivered in Interchange	Cars Placed for Unloading	Loads on Wheels at Destination As of 12/15/2019
CN	447	121	125	409	602
CP	199	123	123	272	494
SRY		4		5	59

**Port Unloads**

	12/15	12/14	Week To Date	Last Week
CN	474	410	2,443	2,402
CP	379	457	2,802	2,943
SRY	2	9	83	52

**Age Profile of Loaded Cars Waiting Placement for Unloading**

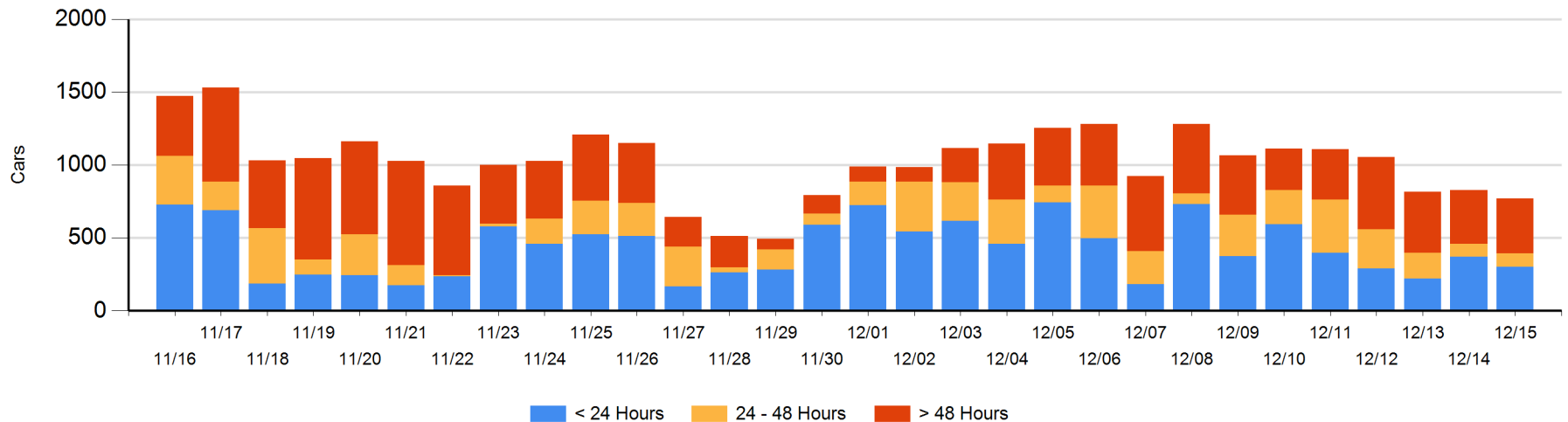
**Today**

	< 24 Hrs	24 - 48 Hrs	> 48-72 Hrs	> 72 Hrs	Total On Hand
CN	163	76	10	224	473
CP	138	18	64	77	297
SRY					0

**Change in Last 24 Hours**

	< 24 Hrs	24-48 Hrs	48 - 72 Hrs	> 72 Hrs
CN	-52	53	-91	88
CP	-19	-46	24	-16
SRY				

**Loaded Cars on Hand Vancouver Waiting for Placement - Last 30 Days All Railways**



**Port Terminal Status**

**Prince Rupert**

Daily Activity for 12/15/2019

	Cars Arrived	Cars Received in Interchange	Cars Delivered in Interchange	Cars Placed for Unloading	Loads on Wheels at Destination As of 12/15/2019
CN	26			26	3

**Port Unloads**

	12/15	12/14	Week To Date	Last Week
CN	26	45	1,239	1,400

**Age Profile of Loaded Cars Waiting Placement for Unloading**

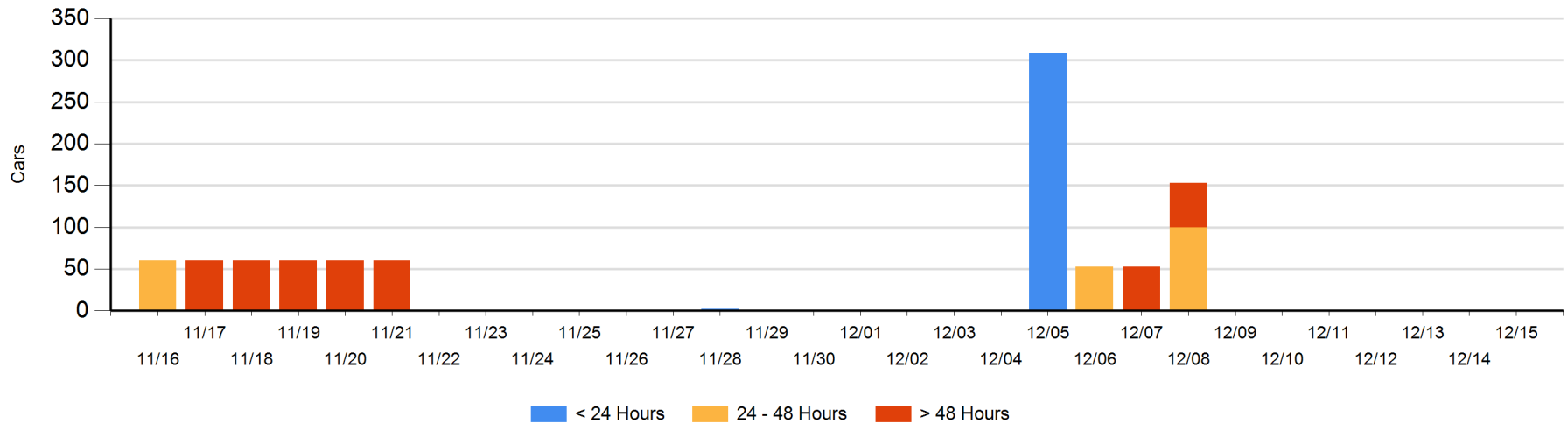
**Today**

	< 24 Hrs	24 - 48 Hrs	> 48-72 Hrs	> 72 Hrs	Total On Hand
CN					0

**Change in Last 24 Hours**

	< 24 Hrs	24-48 Hrs	48 - 72 Hrs	> 72 Hrs
CN				

Loaded Cars on Hand Prince Rupert Waiting for Placement - Last 30 Days All Railways



**Port Terminal Status**

**Thunder Bay**

Daily Activity for 12/15/2019

	Cars Arrived	Cars Received in Interchange	Cars Delivered in Interchange	Cars Placed for Unloading	Loads on Wheels at Destination As of 12/15/2019
CN	67			66	307
CP	377			243	739

**Port Unloads**

	12/15	12/14	Week To Date	Last Week
CN	30	139	720	1,039
CP	260	238	1,743	1,649

**Age Profile of Loaded Cars Waiting Placement for Unloading**

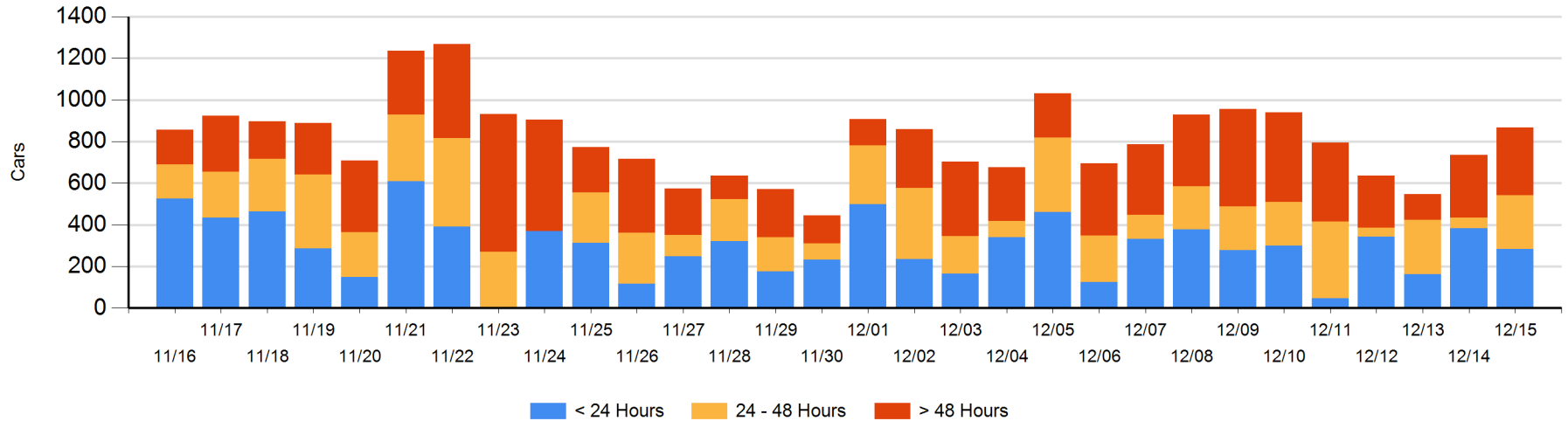
**Today**

	< 24 Hrs	24 - 48 Hrs	> 48-72 Hrs	> 72 Hrs	Total On Hand
CN	1	70		138	209
CP	283	187	29	160	659

**Change in Last 24 Hours**

	< 24 Hrs	24-48 Hrs	48 - 72 Hrs	> 72 Hrs
CN	-69	70	-100	100
CP	-30	135	-84	111

**Loaded Cars on Hand Thunder Bay Waiting for Placement - Last 30 Days All Railways**



## Measurement Definitions

Loads on Wheels	<p>Count of loaded rail cars including all rail cars that have been released loaded at origin and have not been reported by the railway as unloaded at destination.</p> <p>Counts include all rail cars (hopper cars and boxcars) moving within a pipeline.</p>
Loads Not Moving	<p>Loaded rail cars for which the railways have not reported a movement event for 48 hours or more whether the rail car is at origin, enroute or at destination.</p>
Port Unloads	<p>Count of rail cars reported by railways as unloaded at the western port destinations of Vancouver, Prince Rupert and Thunder Bay.</p> <p>Unload counts include all rail cars (hopper cars and boxcars) unloaded by all receivers including major port terminals, transloaders and other receivers.</p>
Cars Arrived	<p>Count of rail cars reported as arrived at the destination railway terminal.</p>
Cars Received in Interchange	<p>Count of rail cars received in interchange by each railway within a destination railway terminal. Interchange activity is tracked for the Vancouver and Thunder Bay pipelines as applicable.</p>
Cars Delivered in Interchange	<p>Count of rail cars delivered in interchange by each railway within a destination railway terminal. Interchange activity is tracked for the Vancouver and Thunder Bay pipelines as applicable.</p>
Cars Placed for Unloading	<p>Count of rail cars reported by the railways as placed loaded at the receiver's facility for unloading.</p>
Loads on Wheels at Destination	<p>Count of rail cars that remain under load within the destination railway terminal including rail cars that have been reported as placed for unloading but not yet reported as unloaded.</p>
Waiting Placement for Unloading	<p>Count of rail cars that have been reported as arrived at the destination railway terminal but not reported as placed for unloading by the railway.</p> <p>For the Ports of Vancouver, Prince Rupert and Thunder Bay the count of rail cars waiting placement for unloading is categorized by age – i.e. the elapsed time from arrival at destination to the current report date.</p>