

**SPEED READ**

- Loads on wheels decreased overnight, marking a decline in CN traffic offset by higher CP volumes. On a net basis, volumes fell due to reduced traffic in the E. Canada, Vancouver and Prince Rupert corridors offset by higher traffic in the Thunder Bay and USA/MEX corridors.
- Network fluidity improved overnight, led by a decline in idle car counts on both CN and CP by 20% (-317) and 11% (-142), respectively. The total count of cars for 4+ days on both railways decreased 2% (-19) overnight - now at 769 cars.
- One day in Week 20 unloads now ahead of prior week's performance by more than 100 unloads, marking improved week over week performance at Vancouver offset by reduced unloads at Prince Rupert and Thunder Bay.

=====

**Loads on Wheels**

- Loads on wheels decreased 3% (-397) overnight and have now decreased for the third consecutive day, due to reduced traffic on CN offset by higher traffic on CP - combined total at 10,973 and 4% below the trailing 30-day average.
- On a net basis, the decline in loads on wheels indicates reduced traffic in the E. Canada, Vancouver and Prince Rupert corridors offset by higher traffic in the Thunder Bay and USA/MEX corridors.
- CN volumes declined 7% (-419) overnight, with reduced traffic across all corridors other than USA/MEX. System wide CN loads on wheels currently at 5,916 and in line with the trailing 30-day average.
- CP volumes increased marginally by 1% (+35) overnight, driven by an increase in traffic in the Thunder Bay and USA/MEX corridors offset by a decline in traffic in the Vancouver and E. Canada corridors. CP system wide loads on wheels now at 4,777 and 10% below the trailing 30-day average.
- Vancouver currently at 4,965, the lowest seen in the last 30 days, fell for the third consecutive day, down 3% (-136) overnight, now 12% below the trailing 30-day average.
- The Prince Rupert pipeline currently at 1,882, decreased 4% (-83) overnight, and 13% above the trailing 30-day average.
- Thunder Bay volumes increased marginally by 1% (+20) overnight - currently at 2,566 and 3% below the trailing 30-day average, with 68% of traffic moving on CP.

**Hopper Car Rationing**

- CN cancelled 50 in grain week 18. No hopper cars were rationed or cancelled by CP in week 18.

**Loads Not Moving**

- **The count of cars not moving for 48+ hours declined 16% (-459) overnight, reflecting reduced counts on both CN and CP. Idle car counts now at 2,470 and 22% below the trailing 30-day average.**
- CN
  - **The count of idle cars for 48+ hours decreased 20% (-317) overnight - presently at 1,307 cars.**
  - The number of cars idle for 4+ days increased 10% (+49) overnight - currently at 550 cars.
  - The count of cars not moving for 7+ days increased 40% (+63) overnight - now at 221 cars.
  - Vancouver represents 22% of all idle cars.
  - In total 66% of all idle cars are dwelling at origin locations.
- CP
  - **CP idle car counts for 48+ hours declined 11% (-142) overnight - currently at 1,163 cars.**

- The number of cars idle for 4+ days declined 24% (-68) overnight - now at 219 cars.
- The number of cars idle for 7+ days declined 32% (-25) overnight - now at 53 cars.
- Vancouver accounts for 36% of all idle cars.
- In total 41% of all idle cars are dwelling at origin locations.

### **Port Performance**

- CN and CP reported a total of 1,359 cars unloaded at the three major ports, now 13% above the trailing 30-day average. One day in Week 20 unloads now ahead of last week's pace by more than 100 unloads, marking higher unloads at Vancouver offset by reduced unloads at Prince Rupert and Thunder Bay.
- Vancouver
  - 836 unloads reported by CN and CP at the Port of Vancouver; CN - 371 and CP - 465. One day in Week 20 unloads are tracking ahead of last week's performance by more than 200 unloads.
  - There are 1,100 cars on site at Vancouver with 800 cars arriving at the port in the last 24 hours.
  - CN and CP have 950 cars in British Columbia en route to Vancouver, with 550 cars at Kamloops and west, and 56% of traffic moving on CP.
- Prince Rupert
  - Prince Rupert reported 211 unloads, now behind last week's unloads after one day by more than 50 unloads.
  - Loads on wheels remain above 1,000 cars - now at 1,882 cars.
  - There are more than 500 cars west of Jasper en route to Prince Rupert.
  - There are 250 cars on site at Prince Rupert with 450 cars arriving at the port in the last 24 hours.
- Thunder Bay
  - 312 unloads were reported at Thunder Bay yesterday. One day in Week 20 unloads are tracking behind last week's pace by 20 unloads.
  - There are more than 950 cars on site at Thunder Bay with around 250 cars arriving at the port in the prior 24 hours.
  - There are more than 500 cars en route to Thunder Bay from Winnipeg and east.

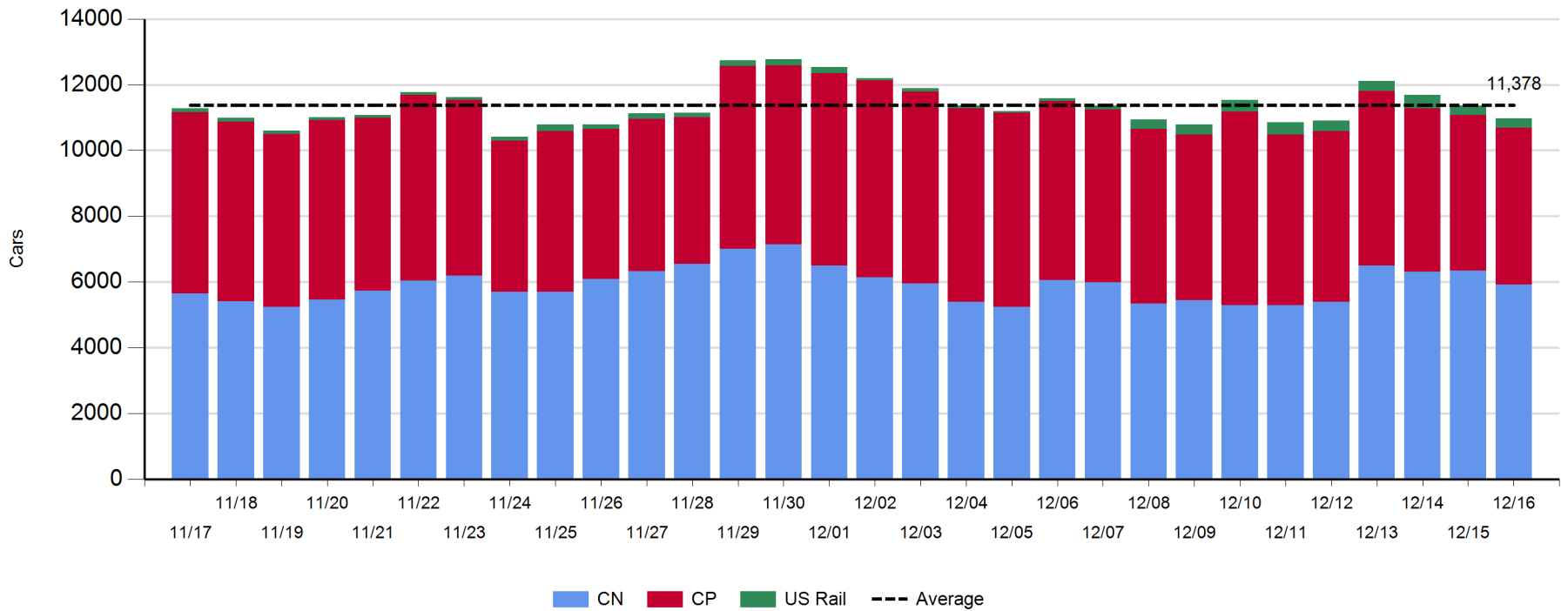
**Daily Loads on Wheels - 12/16/2019**

	E Canada	Prince Rupert	Thunder Bay	USA/MEX	Vancouver	Total
CN	632	1,882	814	210	2,378	5,916
CP	62		1,752	421	2,542	4,777
Short Line	64				45	109
US Rail				171		171
	758	1,882	2,566	802	4,965	10,973

**Change in Loads on Wheels - Prior 24 Hours**

	E Canada	Prince Rupert	Thunder Bay	USA/MEX	Vancouver	Total
CN	-205	-83	-121	4	-14	-419
CP	-2		141	4	-108	35
Short Line	0				-14	-14
US Rail				1		1
	-207	-83	20	9	-136	-397

**Loads on Wheels - Prior 30 Days**



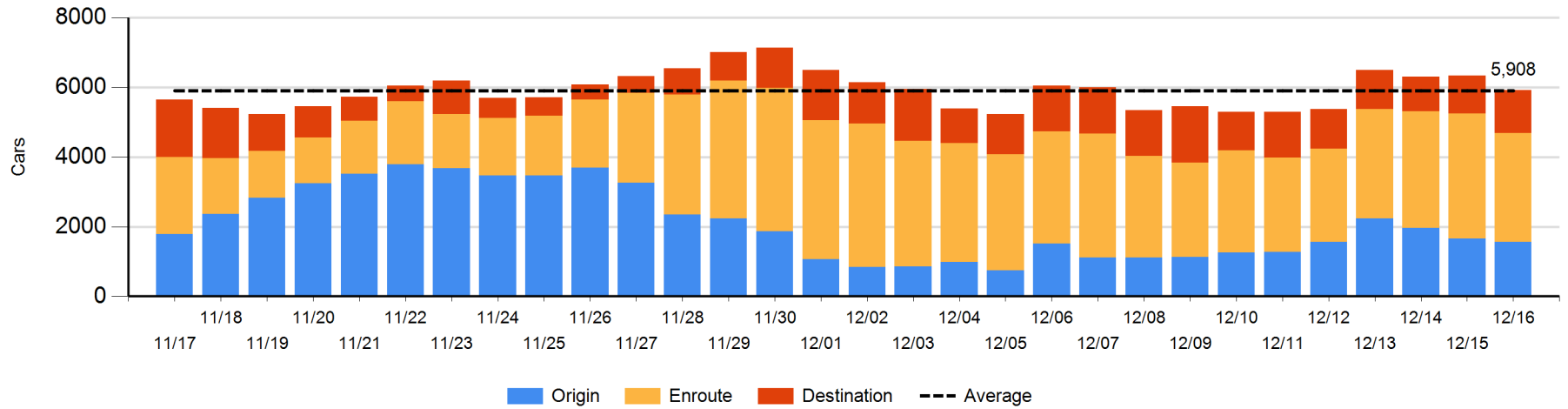
**Daily Loads on Wheels By Pipeline Location - 12/16/2019**

	E Canada	Prince Rupert	Thunder Bay	USA/MEX	Vancouver	Total
CN						
Origin	26	657	194	18	659	1,554
Enroute	544	982	225	185	1,197	3,133
Destination	62	243	395	7	522	1,229
	632	1,882	814	210	2,378	5,916
CP						
Origin	51		432	299	503	1,285
Enroute	11		746	122	1,498	2,377
Destination			574		541	1,115
	62		1,752	421	2,542	4,777
US Rail / Short Line						
Origin						
Enroute	64			144		208
Destination				27	45	72
	64			171	45	280

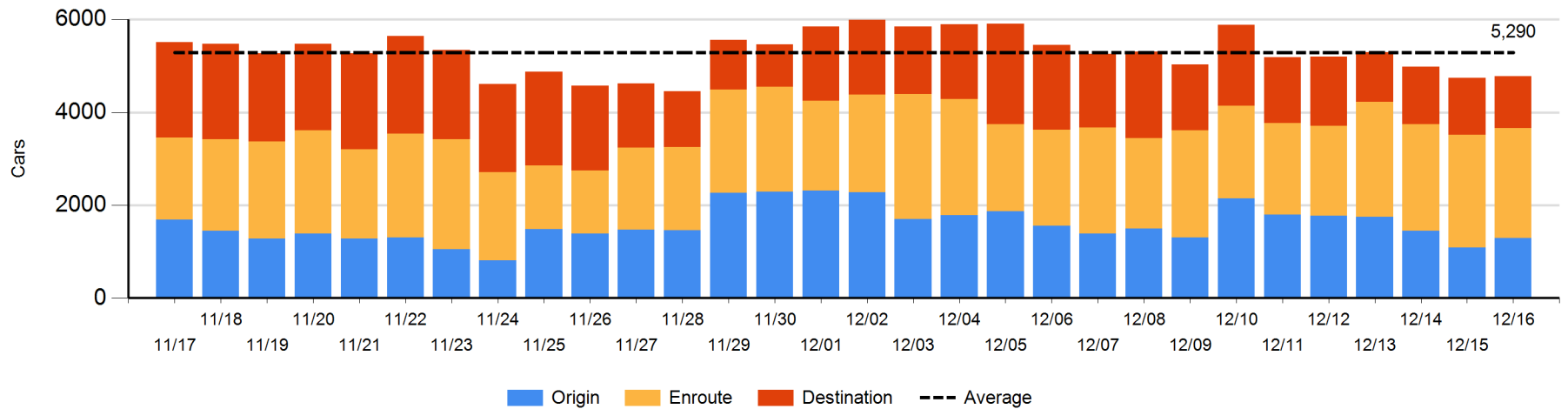
**Change in Daily Loads on Wheels By Pipeline Location - Prior 24 Hours**

	E Canada	Prince Rupert	Thunder Bay	USA/MEX	Vancouver	Total
CN						
Origin	-98	-175	0	-25	189	-109
Enroute	1	-148	-209	29	-118	-445
Destination	-108	240	88	0	-85	135
	-205	-83	-121	4	-14	-419
CP						
Origin	0		85	102	13	200
Enroute	-2		221	-98	-169	-48
Destination			-165		48	-117
	-2		141	4	-108	35
US Rail / Short Line						
Origin						
Enroute	2			69		71
Destination	-2			-68	-14	-84
	0			1	-14	-13

**CN Loads on Wheels by Pipeline Location - 12/16/2019**



**CP Loads on Wheels by Pipeline Location - 12/16/2019**

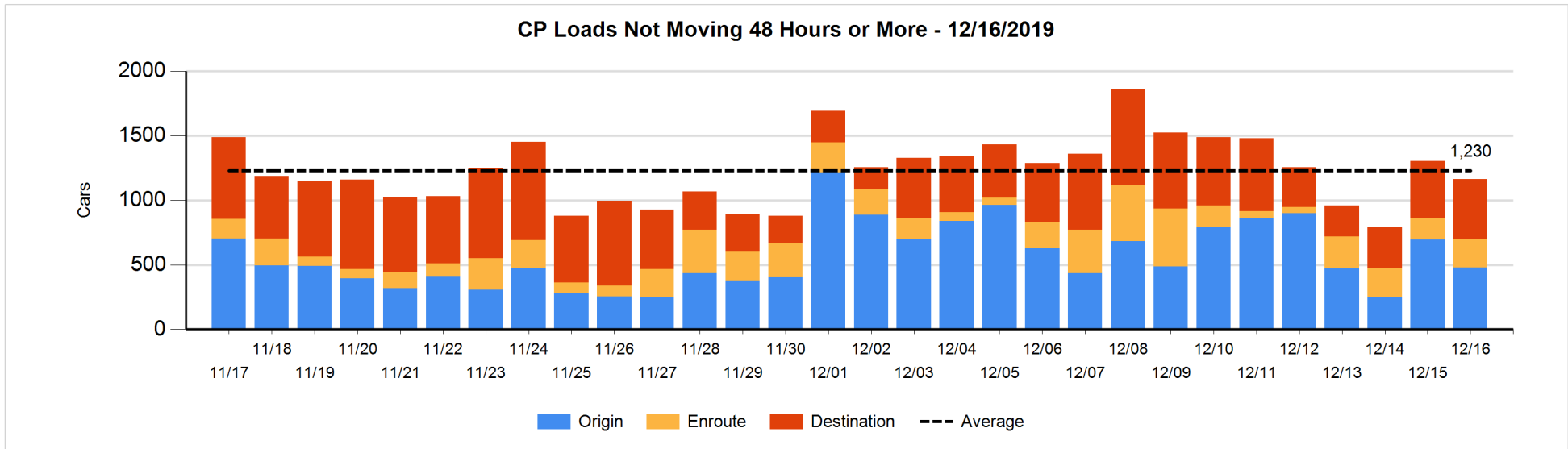
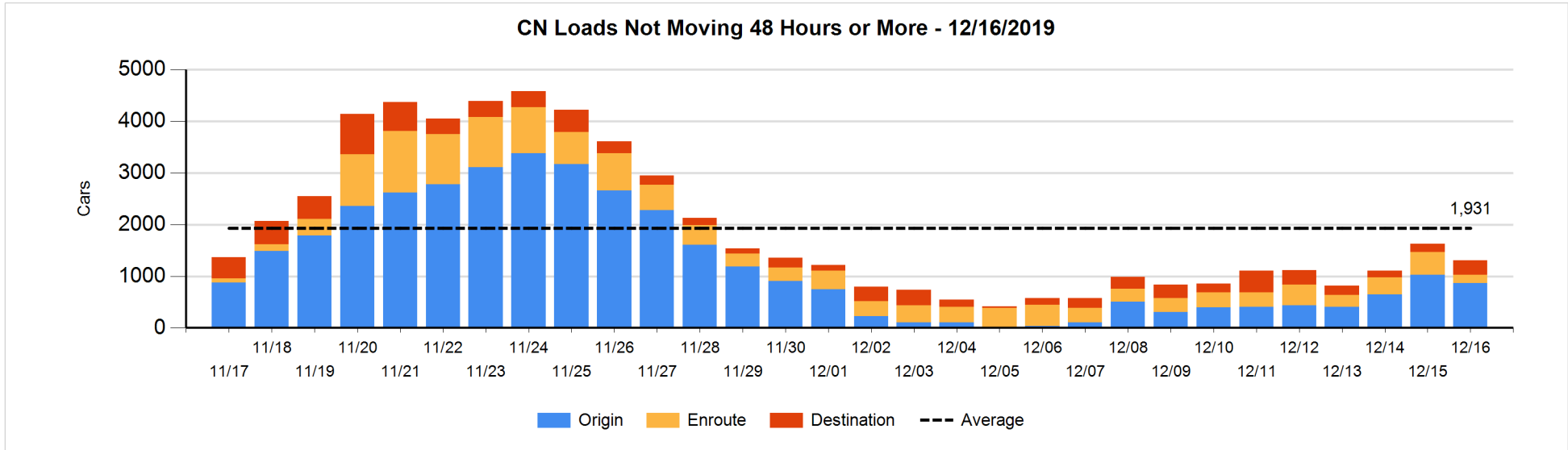


**Loads Not Moving 48 Hours or More - 12/16/2019**

	E Canada	Prince Rupert	Thunder Bay	USA/MEX	Vancouver	Total
<b>CN</b>						
Origin	21	427	194	14	207	863
Enroute	38	68	3	15	37	161
Destination	7	3	228	3	42	283
	66	498	425	32	286	1307
<b>CP</b>						
Origin	49		88	197	146	480
Enroute	3		25	120	70	218
Destination			261		204	465
	52		374	317	420	1163
<b>US Rail / Short Line</b>						
Origin						
Enroute	18			18		36
Destination				3	35	38
	18			21	35	74

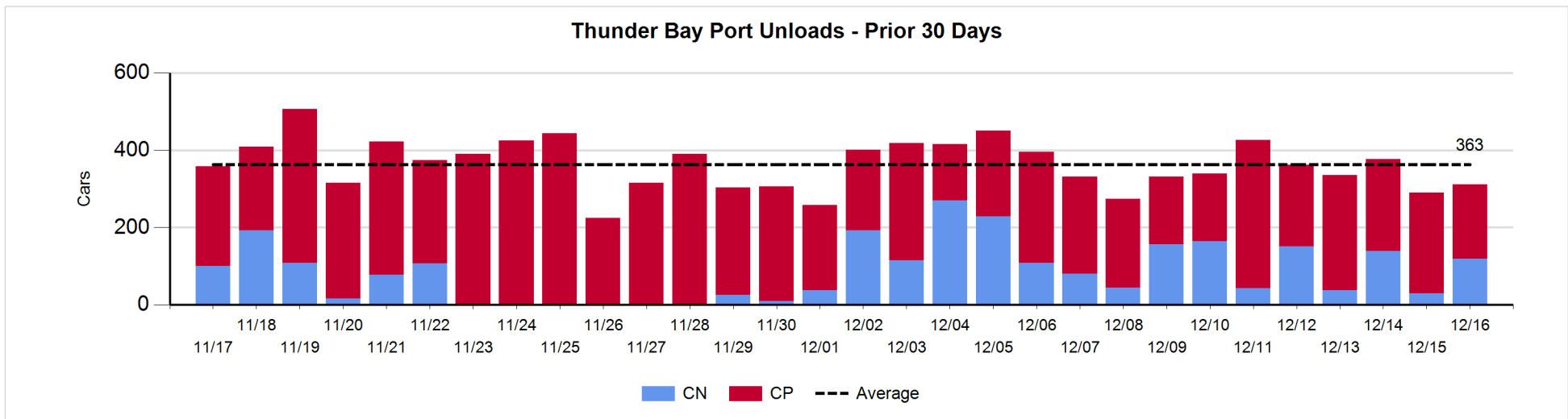
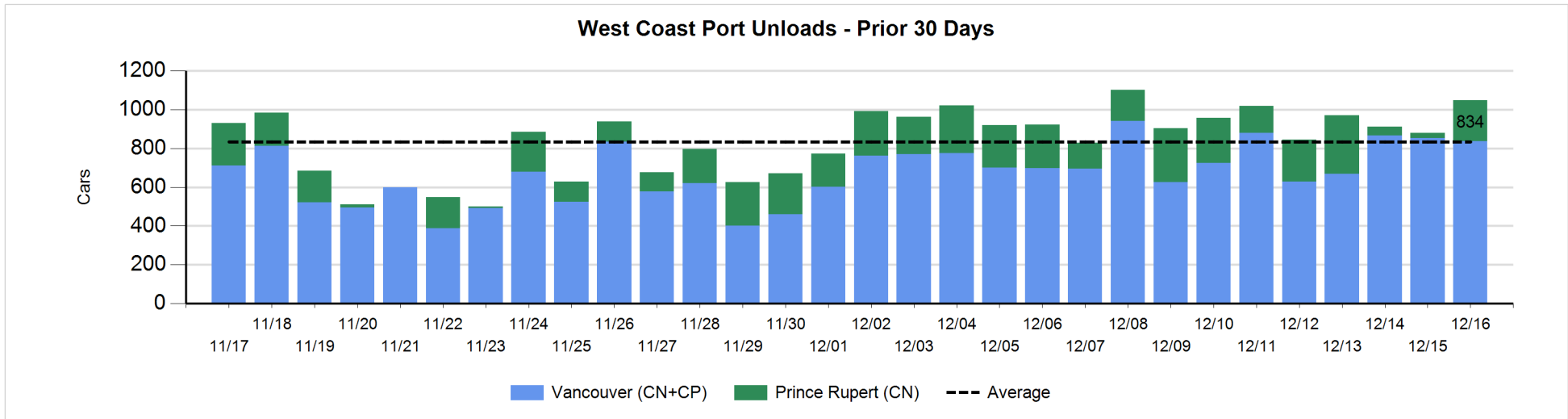
**Change in Loads Not Moving 48 Hours or More - 12/16/2019**

	E Canada	Prince Rupert	Thunder Bay	USA/MEX	Vancouver	Total
<b>CN</b>						
Origin	-28	-200	94	-29	3	-160
Enroute	-134	1	-40	-16	-94	-283
Destination	-18	0	193	0	-49	126
	-180	-199	247	-45	-140	-317
<b>CP</b>						
Origin	22		-25	0	-213	-216
Enroute	1		-7	71	-16	49
Destination			27		-2	25
	23		-5	71	-231	-142
<b>US Rail / Short Line</b>						
Origin						
Enroute	-42			-31		-73
Destination	-2			-24	-2	-28
	-44			-55	-2	-101



**Port Unloads - 12/16/2019**

	Prince Rupert	Vancouver	West Coast Total	Thunder Bay	Total
CN	211	371	582	119	701
CP		465	465	193	658
	211	836	1,047	312	1,359





**Port Terminal Status**

**Vancouver**

Daily Activity for 12/16/2019

	Cars Arrived	Cars Received in Interchange	Cars Delivered in Interchange	Cars Placed for Unloading	Loads on Wheels at Destination As of 12/16/2019
CN	282	109	86	387	522
CP	520	84	110	462	542
SRY		3		14	45

**Port Unloads**

	12/16	12/15	Week To Date	Last Week
CN	371	474	371	2,443
CP	465	379	465	2,802
SRY	16	2	16	83

**Age Profile of Loaded Cars Waiting Placement for Unloading**

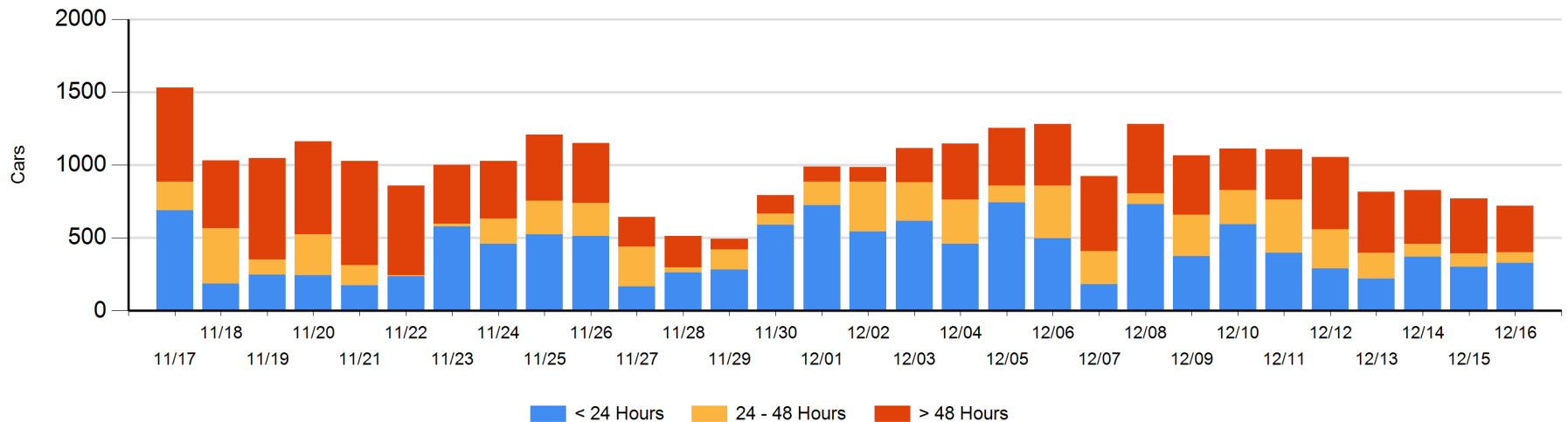
**Today**

	< 24 Hrs	24 - 48 Hrs	> 48-72 Hrs	> 72 Hrs	Total On Hand
CN	197	34	37	148	416
CP	130	39	18	116	303
SRY					0

**Change in Last 24 Hours**

	< 24 Hrs	24-48 Hrs	48 - 72 Hrs	> 72 Hrs
CN	31	-42	27	-76
CP	-5	21	-46	39
SRY				

**Loaded Cars on Hand Vancouver Waiting for Placement - Last 30 Days All Railways**



**Port Terminal Status**

**Prince Rupert**

Daily Activity for 12/16/2019

	Cars Arrived	Cars Received in Interchange	Cars Delivered in Interchange	Cars Placed for Unloading	Loads on Wheels at Destination As of 12/16/2019
CN	451			451	243

**Port Unloads**

	12/16	12/15	Week To Date	Last Week
CN	211	26	211	1,239

**Age Profile of Loaded Cars Waiting Placement for Unloading**

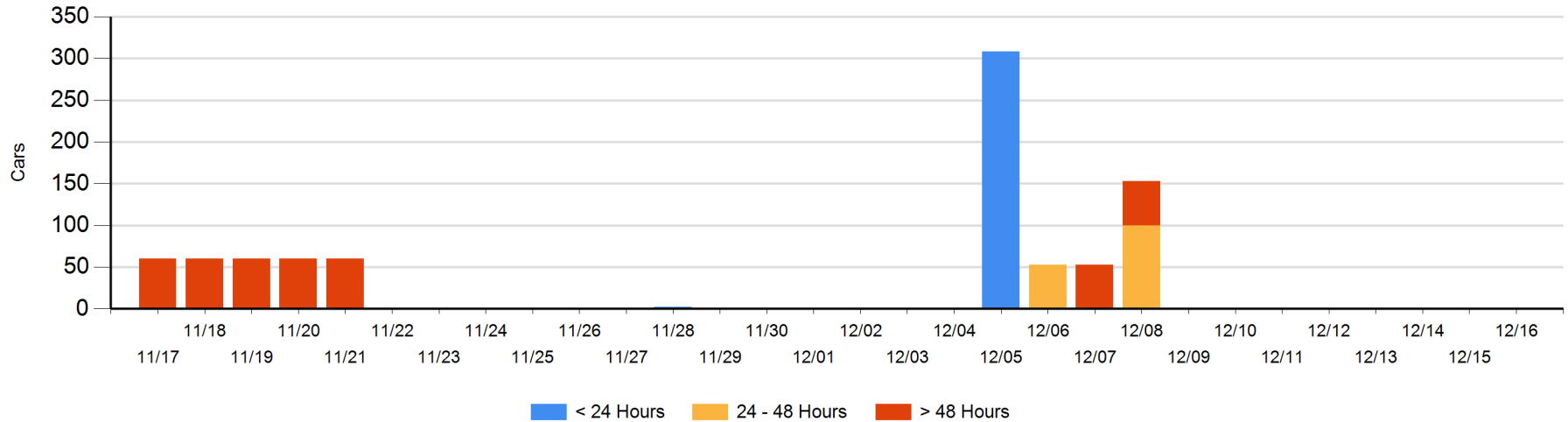
**Today**

	< 24 Hrs	24 - 48 Hrs	> 48-72 Hrs	> 72 Hrs	Total On Hand
CN					0

**Change in Last 24 Hours**

	< 24 Hrs	24-48 Hrs	48 - 72 Hrs	> 72 Hrs
CN				

Loaded Cars on Hand Prince Rupert Waiting for Placement - Last 30 Days All Railways



**Port Terminal Status**

**Thunder Bay**

Daily Activity for 12/16/2019

	Cars Arrived	Cars Received in Interchange	Cars Delivered in Interchange	Cars Placed for Unloading	Loads on Wheels at Destination As of 12/16/2019
CN	209			102	395
CP	28			162	574

**Port Unloads**

	12/16	12/15	Week To Date	Last Week
CN	119	30	119	720
CP	193	260	193	1,743

**Age Profile of Loaded Cars Waiting Placement for Unloading**

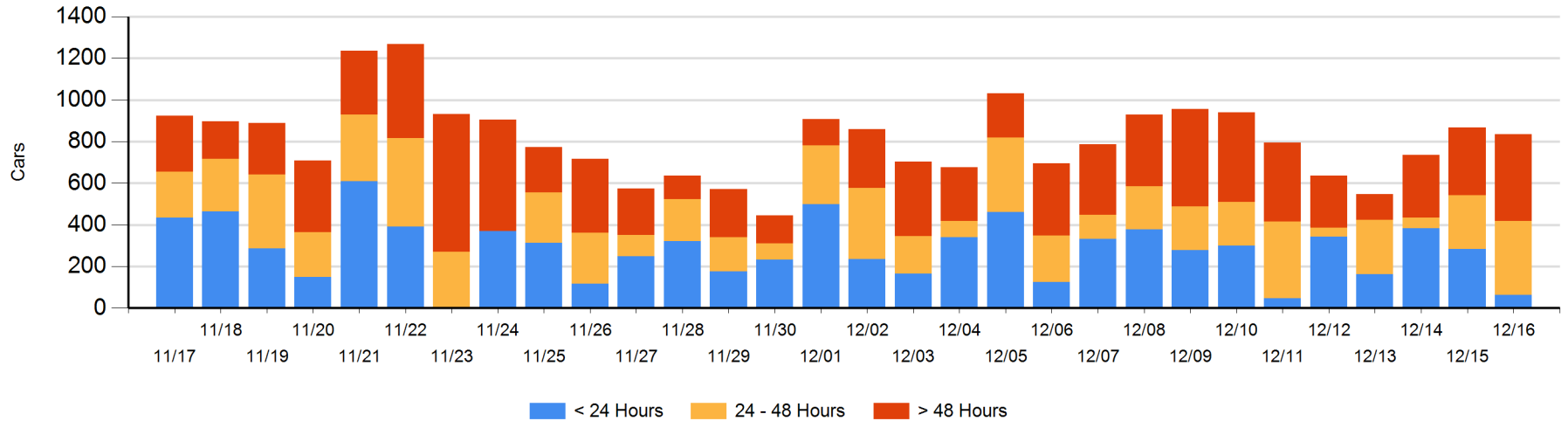
**Today**

	< 24 Hrs	24 - 48 Hrs	> 48-72 Hrs	> 72 Hrs	Total On Hand
CN	35	73	70	138	316
CP	28	283	102	106	519

**Change in Last 24 Hours**

	< 24 Hrs	24-48 Hrs	48 - 72 Hrs	> 72 Hrs
CN	34	3	70	0
CP	-255	96	73	-54

**Loaded Cars on Hand Thunder Bay Waiting for Placement - Last 30 Days All Railways**



## Measurement Definitions

Loads on Wheels	<p>Count of loaded rail cars including all rail cars that have been released loaded at origin and have not been reported by the railway as unloaded at destination.</p> <p>Counts include all rail cars (hopper cars and boxcars) moving within a pipeline.</p>
Loads Not Moving	<p>Loaded rail cars for which the railways have not reported a movement event for 48 hours or more whether the rail car is at origin, enroute or at destination.</p>
Port Unloads	<p>Count of rail cars reported by railways as unloaded at the western port destinations of Vancouver, Prince Rupert and Thunder Bay.</p> <p>Unload counts include all rail cars (hopper cars and boxcars) unloaded by all receivers including major port terminals, transloaders and other receivers.</p>
Cars Arrived	<p>Count of rail cars reported as arrived at the destination railway terminal.</p>
Cars Received in Interchange	<p>Count of rail cars received in interchange by each railway within a destination railway terminal. Interchange activity is tracked for the Vancouver and Thunder Bay pipelines as applicable.</p>
Cars Delivered in Interchange	<p>Count of rail cars delivered in interchange by each railway within a destination railway terminal. Interchange activity is tracked for the Vancouver and Thunder Bay pipelines as applicable.</p>
Cars Placed for Unloading	<p>Count of rail cars reported by the railways as placed loaded at the receiver's facility for unloading.</p>
Loads on Wheels at Destination	<p>Count of rail cars that remain under load within the destination railway terminal including rail cars that have been reported as placed for unloading but not yet reported as unloaded.</p>
Waiting Placement for Unloading	<p>Count of rail cars that have been reported as arrived at the destination railway terminal but not reported as placed for unloading by the railway.</p> <p>For the Ports of Vancouver, Prince Rupert and Thunder Bay the count of rail cars waiting placement for unloading is categorized by age – i.e. the elapsed time from arrival at destination to the current report date.</p>