

## SPEED READ

- Loads on wheels decreased overnight, reflecting a decline in both CN and CP volumes. On a net basis, volumes decreased due to lower traffic across all corridors other than USA/MEX.
- Network fluidity improved overnight, led by a decline in idle car counts on both CN and CP by 19% (-243) and 31% (-357), respectively. The total count of cars for 4+ days on both railways rose significantly by 54% (+415) overnight - presently at 1,184 cars.
- Two days in Week 20 unloads now tracking at par with the prior week's performance, reflecting improved week over week performance at Vancouver offset by reduced unloads at Prince Rupert and Thunder Bay.

=====

## Loads on Wheels

- Loads on wheels declined for the fourth consecutive day, down 5% (-502) overnight, due to lower traffic on both CN and CP - combined total at 10,575 and 7% below the trailing 30-day average.
- On a net basis, the decline in loads on wheels reflects lower traffic across all corridors other than USA/MEX.
- CN volumes declined 5% (-306) overnight, with lower traffic across all corridors other than Vancouver. System wide CN loads on wheels presently at 5,612 and 5% below the trailing 30-day average.
- CP volumes decreased 4% (-171) overnight, driven by a decline in traffic in the Vancouver offset by an increase in volumes in all other corridors. CP system wide loads on wheels currently at 4,708 and 11% below the trailing 30-day average.
- Vancouver currently at 4,773, the lowest seen in the last 30 days, decreased 6% (-294) overnight and have now decreased for the fourth consecutive day, now 15% below the trailing 30-day average.
- The Prince Rupert pipeline presently at 1,710, decreased 9% (-172) overnight, and 3% above the trailing 30-day average.
- Thunder Bay volumes decreased 3% (-72) overnight - presently at 2,496 and 5% below the trailing 30-day average, with 71% of traffic moving on CP.

## Hopper Car Rationing

- CN cancelled 50 hopper car orders in grain week 18. No hopper cars were rationed or cancelled by CP in week 18.

## Loads Not Moving

- **The count of cars not moving for 48+ hours declined 24% (-600) overnight, reflecting reduced counts on both CN and CP. Idle car counts presently at 1,870 and 40% below the trailing 30-day average.**
- CN
  - **The count of idle cars for 48+ hours decreased 19% (-243) overnight - currently at 1,064 cars.**
  - The number of cars idle for 4+ days rose for the third consecutive day, up 31% (+172) overnight - presently at 722 cars.
  - The count of cars not moving for 7+ days gained 3% (+6) overnight - currently at 227 cars.
  - Vancouver represents 19% of all idle cars.
  - In total 64% of all idle cars are dwelling at origin locations.
- CP
  - **CP idle car counts for 48+ hours decreased 31% (-357) overnight - now at 806 cars.**
  - The number of cars idle for 4+ days increased 111% (+243) overnight - presently at 462 cars.
  - The number of cars idle for 7+ days increased 60% (+32) overnight - presently at 85 cars.

- Vancouver accounts for 28% of all idle cars.
- In total 31% of all idle cars are dwelling at origin locations.

### **Port Performance**

- CN and CP reported a total of 1,190 cars unloaded at the three major ports, now in line with the trailing 30-day average. Two days in Week 20 unloads now ahead of last week's pace by 7 unloads, reflecting higher unloads at Vancouver offset by reduced unloads at Prince Rupert and Thunder Bay.
- Vancouver
  - 714 unloads reported by CN and CP at the Port of Vancouver; CN - 274 and CP - 440. Two days in Week 20 unloads are tracking ahead of last week's performance by 200 unloads.
  - There are 1,250 cars on site at Vancouver with more than 850 cars arriving at the port in the last 24 hours.
  - CN and CP have nearly 1,000 cars in British Columbia en route to Vancouver, with more than 300 cars at Kamloops and west, and 63% of traffic moving on CP.
- Prince Rupert
  - Prince Rupert reported 174 unloads, now behind last week's unloads after two days by more than 100 unloads.
  - Loads on wheels remain above 1,000 cars - currently at 1,710 cars.
  - There are nearly 500 cars west of Jasper en route to Prince Rupert.
  - There are 150 cars on site at Prince Rupert with 100 cars arriving at the port in the last 24 hours.
- Thunder Bay
  - 302 unloads were reported at Thunder Bay yesterday. Two days in Week 20 unloads are tracking behind last week's pace by 50 unloads.
  - There are 1,000 cars on site at Thunder Bay with nearly 350 cars arriving at the port in the prior 24 hours.
  - There are 550 cars en route to Thunder Bay from Winnipeg and east.

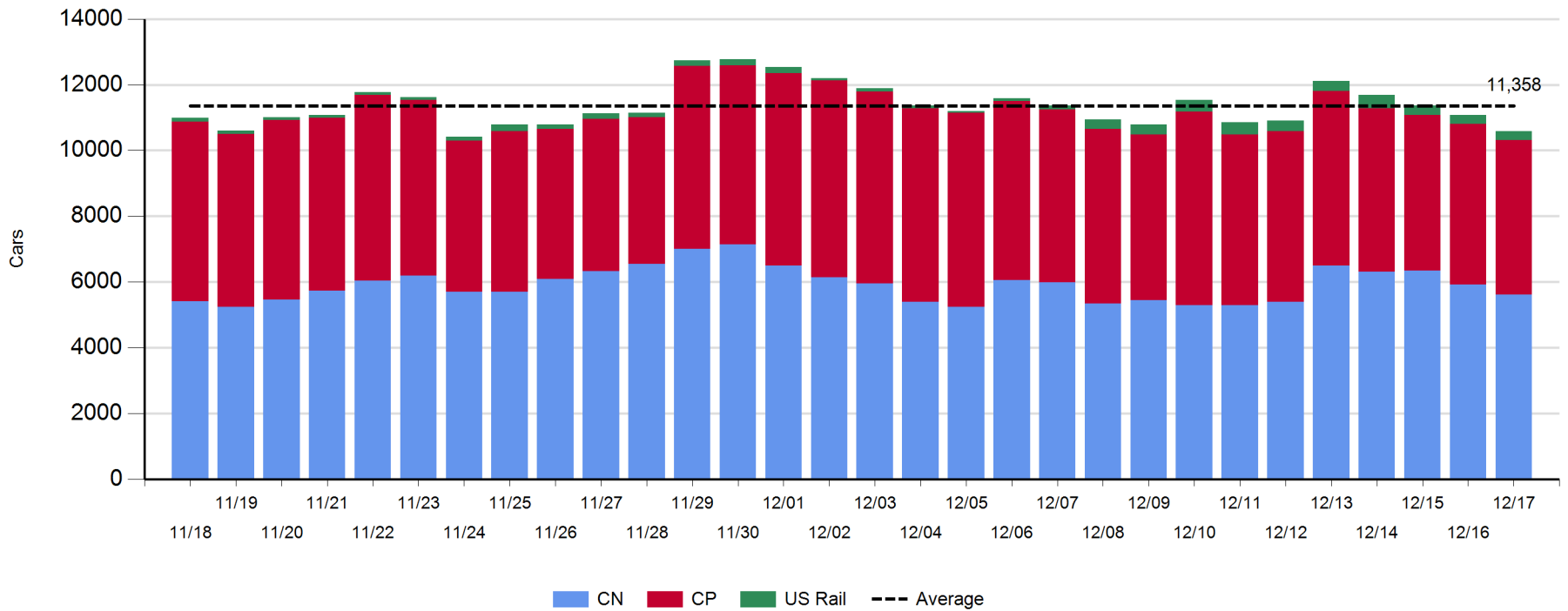
**Daily Loads on Wheels - 12/17/2019**

	E Canada	Prince Rupert	Thunder Bay	USA/MEX	Vancouver	Total
CN	575	1,710	732	209	2,386	5,612
CP	63		1,764	542	2,339	4,708
Short Line	54				48	102
US Rail				153		153
	692	1,710	2,496	904	4,773	10,575

**Change in Loads on Wheels - Prior 24 Hours**

	E Canada	Prince Rupert	Thunder Bay	USA/MEX	Vancouver	Total
CN	-57	-172	-83	-1	7	-306
CP	1		11	121	-304	-171
Short Line	-10				3	-7
US Rail				-18		-18
	-66	-172	-72	102	-294	-502

**Loads on Wheels - Prior 30 Days**

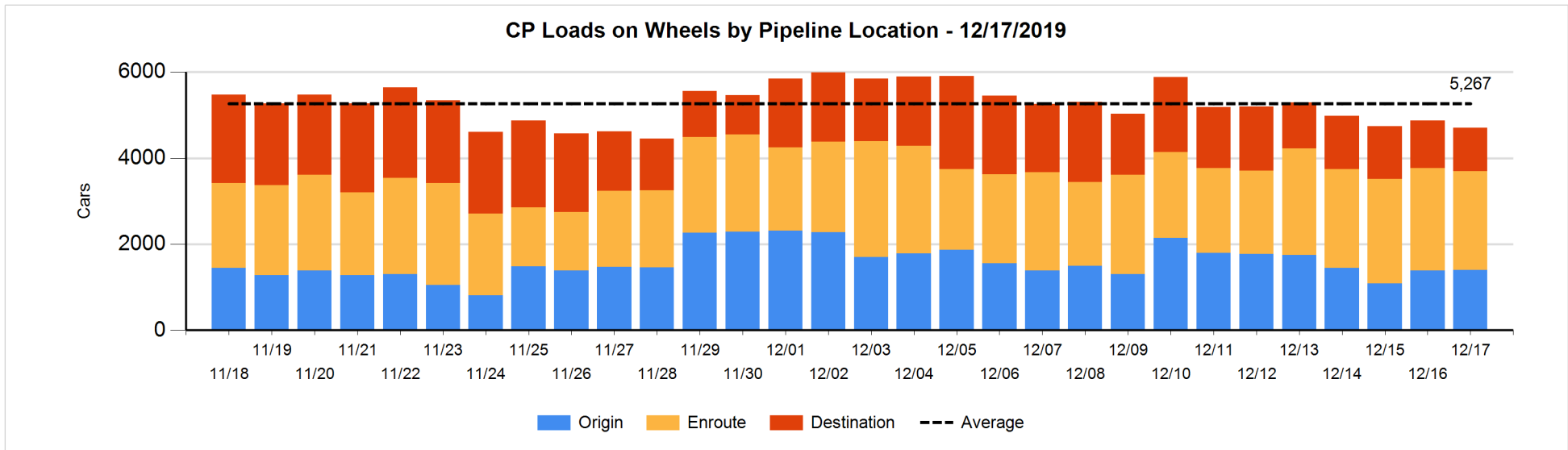
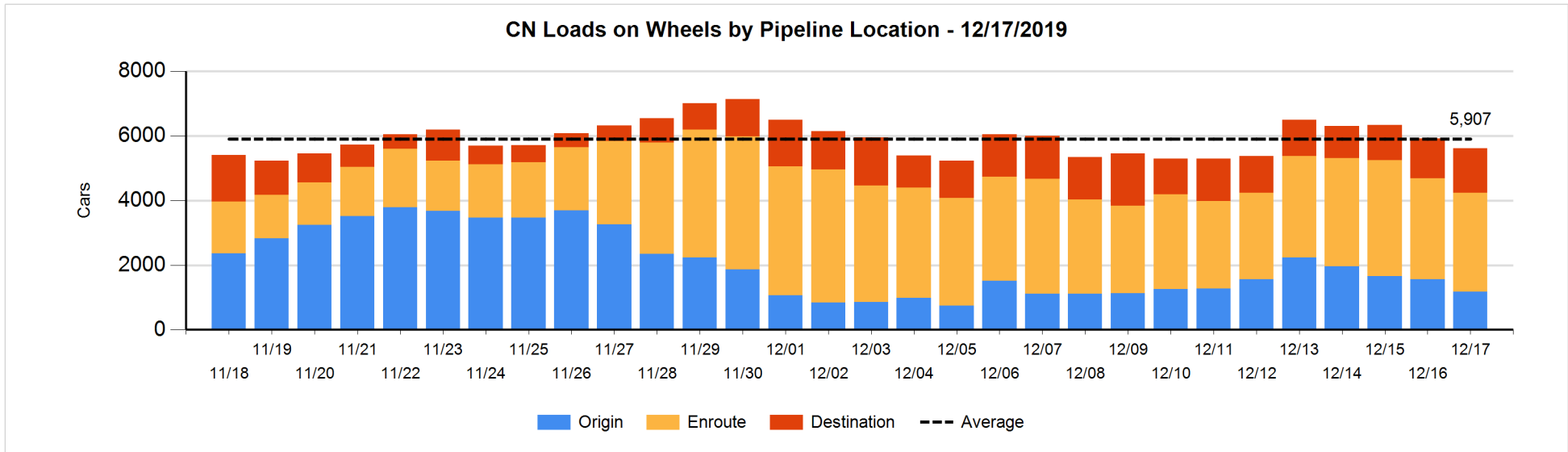


**Daily Loads on Wheels By Pipeline Location - 12/17/2019**

	E Canada	Prince Rupert	Thunder Bay	USA/MEX	Vancouver	Total
CN						
Origin	25	528	194	22	405	1,174
Enroute	539	1,022	51	159	1,292	3,063
Destination	11	160	487	28	689	1,375
	575	1,710	732	209	2,386	5,612
CP						
Origin	51		665	323	366	1,405
Enroute	12		586	219	1,468	2,285
Destination			513		505	1,018
	63		1,764	542	2,339	4,708
US Rail / Short Line						
Origin						
Enroute	50			125		175
Destination	4			28	48	80
	54			153	48	255

**Change in Daily Loads on Wheels By Pipeline Location - Prior 24 Hours**

	E Canada	Prince Rupert	Thunder Bay	USA/MEX	Vancouver	Total
CN						
Origin	-1	-129	0	4	-255	-381
Enroute	-5	40	-174	-26	95	-70
Destination	-51	-83	91	21	167	145
	-57	-172	-83	-1	7	-306
CP						
Origin	0		232	24	-238	18
Enroute	1		-160	97	-30	-92
Destination			-61		-36	-97
	1		11	121	-304	-171
US Rail / Short Line						
Origin						
Enroute	-14			-19		-33
Destination	4			1	3	8
	-10			-18	3	-25

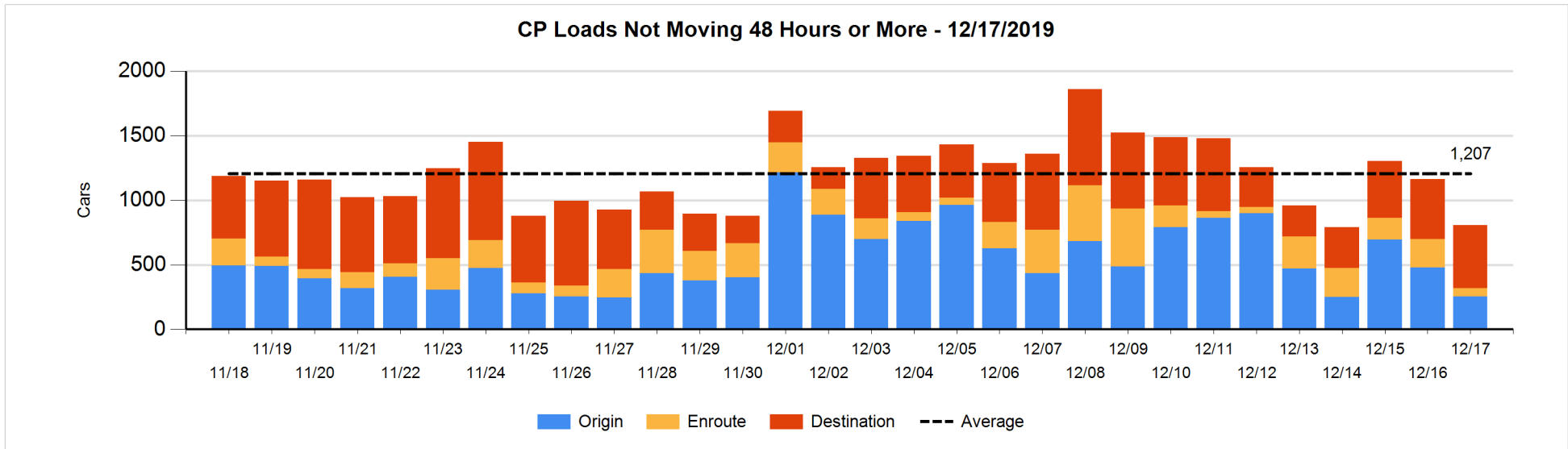
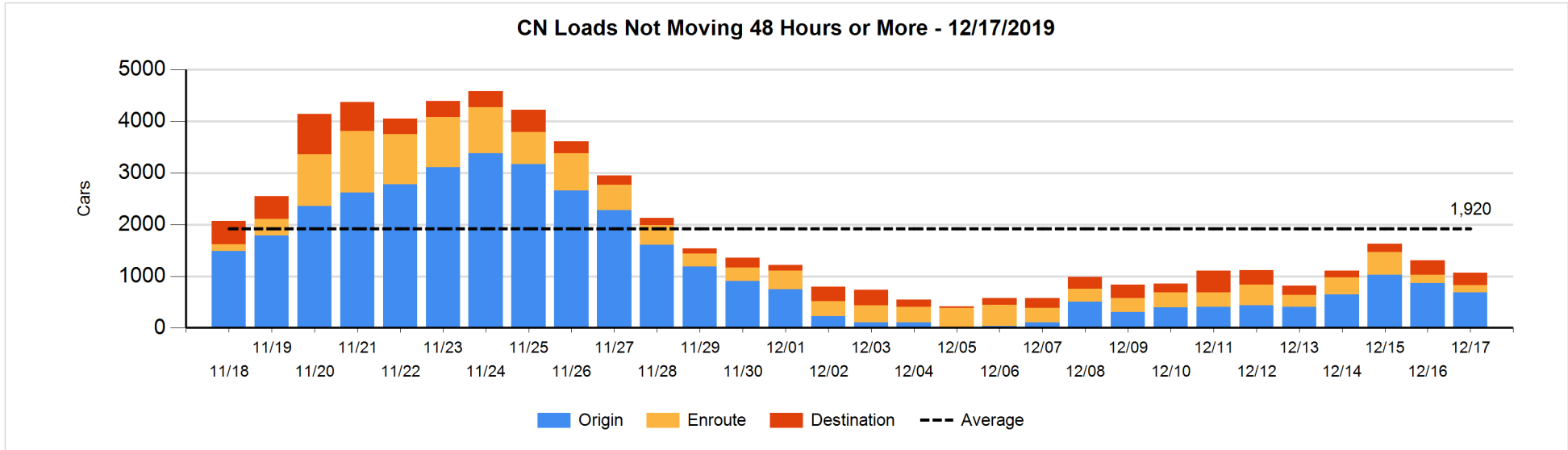


**Loads Not Moving 48 Hours or More - 12/17/2019**

	E Canada	Prince Rupert	Thunder Bay	USA/MEX	Vancouver	Total
<b>CN</b>						
Origin	1	427	194	13	51	686
Enroute	45	65	3	13	12	138
Destination	5	2	97	2	134	240
	51	494	294	28	197	1064
<b>CP</b>						
Origin	51		98	100	4	253
Enroute	4		2	15	46	67
Destination			311		175	486
	55		411	115	225	806
<b>US Rail / Short Line</b>						
Origin						
Enroute				10		10
Destination				3	37	40
				13	37	50

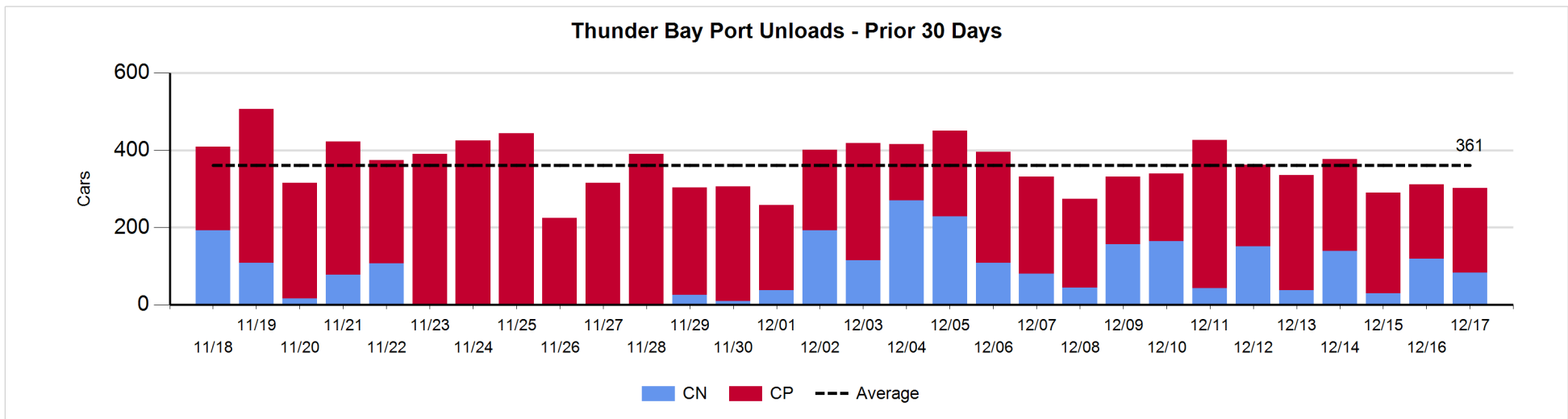
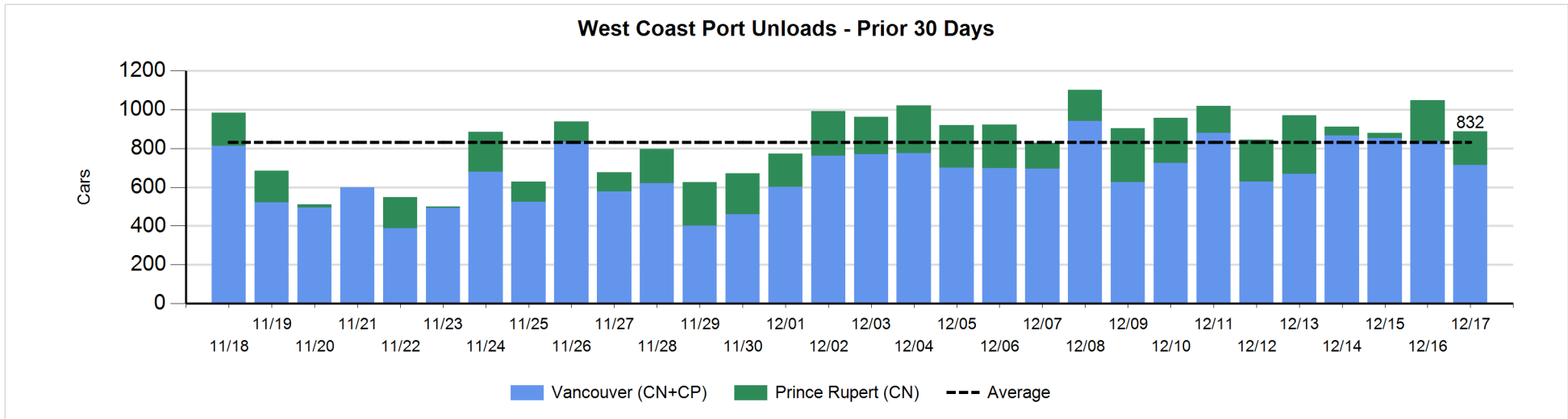
**Change in Loads Not Moving 48 Hours or More - 12/17/2019**

	E Canada	Prince Rupert	Thunder Bay	USA/MEX	Vancouver	Total
<b>CN</b>						
Origin	-20	0	0	-1	-156	-177
Enroute	7	-3	0	-2	-25	-23
Destination	-2	-1	-131	-1	92	-43
	-15	-4	-131	-4	-89	-243
<b>CP</b>						
Origin	2		10	-97	-142	-227
Enroute	1		-23	-105	-24	-151
Destination			50		-29	21
	3		37	-202	-195	-357
<b>US Rail / Short Line</b>						
Origin						
Enroute	-18			-8		-26
Destination				0	2	2
	-18			-8	2	-24



Port Unloads - 12/17/2019

	Prince Rupert	Vancouver	West Coast Total	Thunder Bay	Total
CN	174	274	448	83	531
CP		440	440	219	659
	174	714	888	302	1,190





**Port Terminal Status**

**Vancouver**

Daily Activity for 12/17/2019

	Cars Arrived	Cars Received in Interchange	Cars Delivered in Interchange	Cars Placed for Unloading	Loads on Wheels at Destination As of 12/17/2019
CN	373	236	152	503	689
CP	493	152	244	388	507
SRY		8		4	48

**Port Unloads**

	12/17	12/16	Week To Date	Last Week
CN	274	372	646	2,443
CP	440	465	905	2,802
SRY	5	16	21	83

**Age Profile of Loaded Cars Waiting Placement for Unloading**

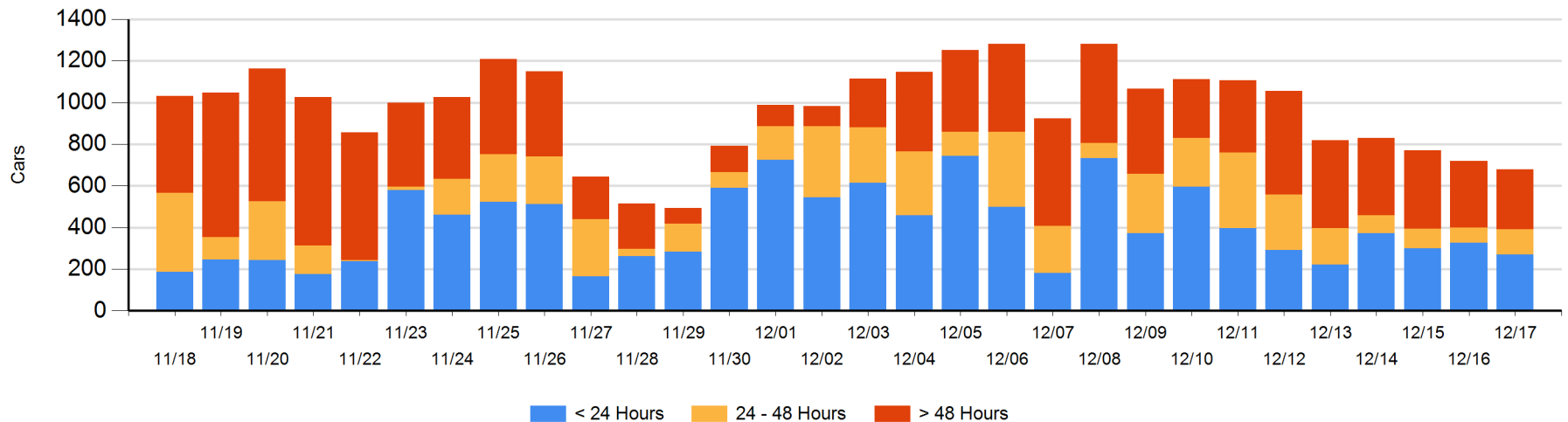
**Today**

	< 24 Hrs	24 - 48 Hrs	> 48-72 Hrs	> 72 Hrs	Total On Hand
CN	97	48	23	143	311
CP	172	75	35	87	369
SRY					0

**Change in Last 24 Hours**

	< 24 Hrs	24-48 Hrs	48 - 72 Hrs	> 72 Hrs
CN	-100	14	-14	-5
CP	42	36	17	-29
SRY				

**Loaded Cars on Hand Vancouver Waiting for Placement - Last 30 Days All Railways**



**Port Terminal Status**

**Prince Rupert**

Daily Activity for 12/17/2019

	Cars Arrived	Cars Received in Interchange	Cars Delivered in Interchange	Cars Placed for Unloading	Loads on Wheels at Destination As of 12/17/2019
CN	91				160

**Port Unloads**

	12/17	12/16	Week To Date	Last Week
CN	174	211	385	1,239

**Age Profile of Loaded Cars Waiting Placement for Unloading**

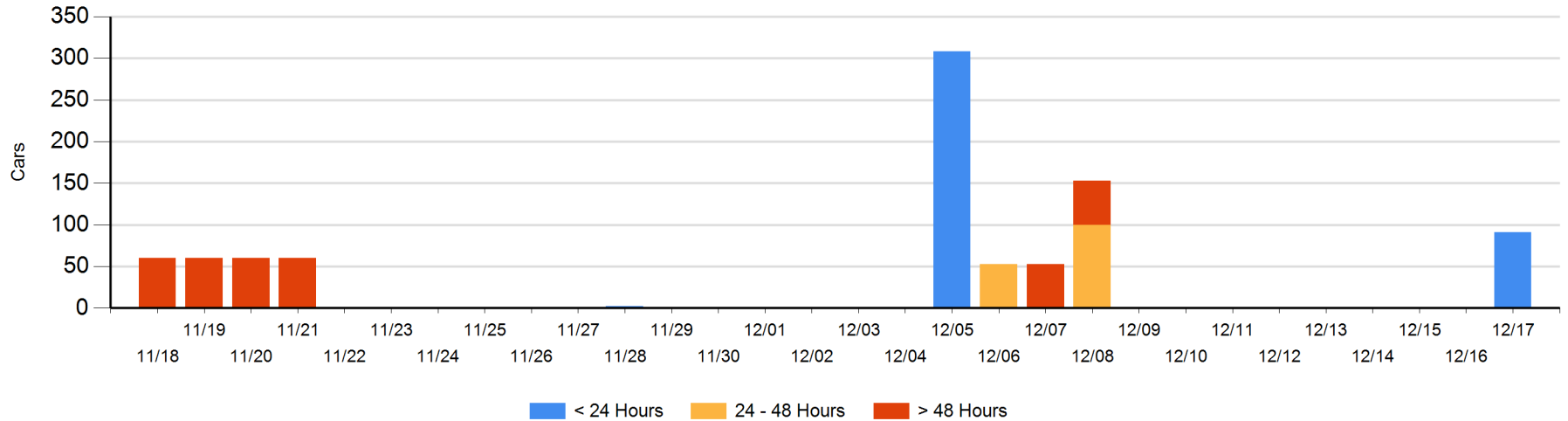
**Today**

	< 24 Hrs	24 - 48 Hrs	> 48-72 Hrs	> 72 Hrs	Total On Hand
CN	91				91

**Change in Last 24 Hours**

	< 24 Hrs	24-48 Hrs	48 - 72 Hrs	> 72 Hrs
CN	91			

Loaded Cars on Hand Prince Rupert Waiting for Placement - Last 30 Days All Railways



**Port Terminal Status**

**Thunder Bay**

Daily Activity for 12/17/2019

	Cars Arrived	Cars Received in Interchange	Cars Delivered in Interchange	Cars Placed for Unloading	Loads on Wheels at Destination As of 12/17/2019
CN	174			91	487
CP	160			222	513

**Port Unloads**

	12/17	12/16	Week To Date	Last Week
CN	83	119	202	720
CP	219	193	412	1,743

**Age Profile of Loaded Cars Waiting Placement for Unloading**

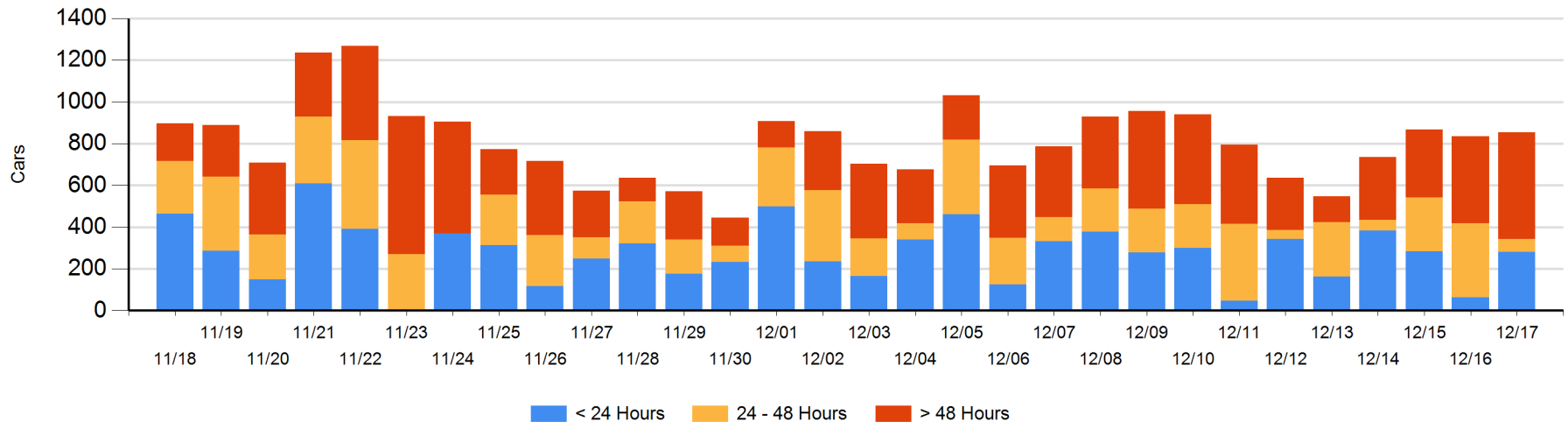
**Today**

	< 24 Hrs	24 - 48 Hrs	> 48-72 Hrs	> 72 Hrs	Total On Hand
CN	120	35	73	170	398
CP	160	28	96	172	456

**Change in Last 24 Hours**

	< 24 Hrs	24-48 Hrs	48 - 72 Hrs	> 72 Hrs
CN	85	-38	3	32
CP	132	-255	-6	66

**Loaded Cars on Hand Thunder Bay Waiting for Placement - Last 30 Days All Railways**



## Measurement Definitions

Loads on Wheels	<p>Count of loaded rail cars including all rail cars that have been released loaded at origin and have not been reported by the railway as unloaded at destination.</p> <p>Counts include all rail cars (hopper cars and boxcars) moving within a pipeline.</p>
Loads Not Moving	<p>Loaded rail cars for which the railways have not reported a movement event for 48 hours or more whether the rail car is at origin, enroute or at destination.</p>
Port Unloads	<p>Count of rail cars reported by railways as unloaded at the western port destinations of Vancouver, Prince Rupert and Thunder Bay.</p> <p>Unload counts include all rail cars (hopper cars and boxcars) unloaded by all receivers including major port terminals, transloaders and other receivers.</p>
Cars Arrived	<p>Count of rail cars reported as arrived at the destination railway terminal.</p>
Cars Received in Interchange	<p>Count of rail cars received in interchange by each railway within a destination railway terminal. Interchange activity is tracked for the Vancouver and Thunder Bay pipelines as applicable.</p>
Cars Delivered in Interchange	<p>Count of rail cars delivered in interchange by each railway within a destination railway terminal. Interchange activity is tracked for the Vancouver and Thunder Bay pipelines as applicable.</p>
Cars Placed for Unloading	<p>Count of rail cars reported by the railways as placed loaded at the receiver's facility for unloading.</p>
Loads on Wheels at Destination	<p>Count of rail cars that remain under load within the destination railway terminal including rail cars that have been reported as placed for unloading but not yet reported as unloaded.</p>
Waiting Placement for Unloading	<p>Count of rail cars that have been reported as arrived at the destination railway terminal but not reported as placed for unloading by the railway.</p> <p>For the Ports of Vancouver, Prince Rupert and Thunder Bay the count of rail cars waiting placement for unloading is categorized by age – i.e. the elapsed time from arrival at destination to the current report date.</p>