

SPEED READ

- Loads on wheels fell marginally overnight, marking reduced CP volumes offset by an increase in CN volumes. On a net basis, volumes fell due to lower traffic in the E. Canada, Thunder Bay and USA/MEX corridors offset by higher volumes in the Vancouver and Prince Rupert corridors.
- Network fluidity improved overnight, led by a decline in idle car counts on CP by 16% (-154) offset by an increase in idle car counts on CN by 12% (+83). The total count of cars for 4+ days on both railways decreased 2% (-16) overnight - presently at 829 cars.
- Four days in Week 20 unloads now behind prior week's performance by around 100 unloads, reflecting reduced unloads at Thunder Bay and Prince Rupert offset by improved week over week performance at Vancouver.

Loads on Wheels

- Loads on wheels fell marginally by 1% (-83) overnight, due to reduced volumes on CP offset by higher traffic on CN - combined total at 11,241 and 1% below the trailing 30-day average.
- On a net basis, the decline in loads on wheels reflects lower traffic in the E. Canada, Thunder Bay and USA/MEX corridors offset by higher volumes in the Vancouver and Prince Rupert corridors.
- CN volumes increased slightly by 1% (+62) overnight, with higher traffic in the Thunder Bay and Prince Rupert corridors offset by reduced volumes in the E. Canada, Vancouver and USA/MEX corridors. System wide CN loads on wheels now at 5,863 and 1% below the trailing 30-day average.
- CP volumes fell 2% (-109) overnight, driven by a decline in volumes across all corridors other than Vancouver. CP system wide loads on wheels presently at 5,206 and 1% below the trailing 30-day average.
- Vancouver now at 5,267, gained 2% (+84) overnight, now 6% below the trailing 30-day average.
- The Prince Rupert pipeline presently at 1,569, increased slightly by (+5) overnight, and 5% below the trailing 30-day average.
- Thunder Bay volumes fell 2% (-54) overnight - presently at 2,794 and 5% above the trailing 30-day average, with 68% of traffic moving on CP.

Hopper Car Rationing

- No hopper car orders have been reported rationed by either CN or CP in week 19.

Loads Not Moving

- **The count of cars not moving for 48+ hours decreased 4% (-71) overnight and have now decreased for the fourth consecutive day, reflecting reduced counts on CP offset by higher counts on CN. Idle car counts now at 1,588, the lowest seen in the last 30 days, and 47% below the trailing 30-day average.**
- CN
 - **The count of idle cars for 48+ hours increased 12% (+83) overnight - now at 776 cars.**
 - The number of cars idle for 4+ days decreased 6% (-27) overnight - presently at 398 cars.
 - The count of cars not moving for 7+ days increased 18% (+28) overnight - now at 184 cars.
 - Vancouver represents 24% of all idle cars.
 - In total 66% of all idle cars are dwelling at origin locations.
- CP
 - **CP idle car counts for 48+ hours decreased 16% (-154) overnight - now at 812 cars.**
 - The number of cars idle for 4+ days gained 3% (+11) overnight - now at 431 cars.
 - The number of cars idle for 7+ days increased significantly by 51% (+35) overnight - now at 104 cars.

- Vancouver accounts for 14% of all idle cars.
- In total 36% of all idle cars are dwelling at origin locations.

Port Performance

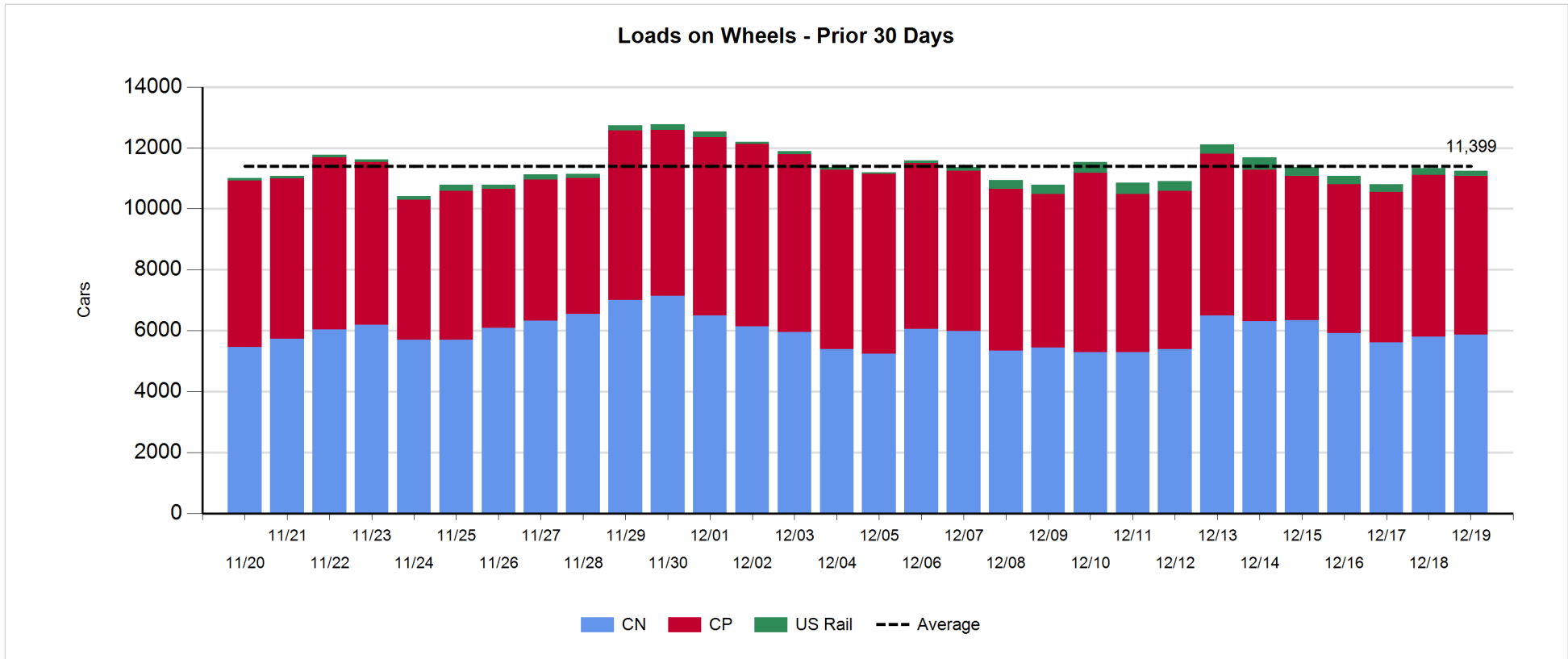
- CN and CP reported a total of 1,196 cars unloaded at the three major ports, in line with the trailing 30-day average. Four days in Week 20 unloads now behind last week's pace by fewer than 100 unloads, reflecting reduced unloads at Thunder Bay and Prince Rupert offset by higher unloads at Vancouver.
- Vancouver
 - 743 unloads reported by CN and CP at the Port of Vancouver; CN - 315 and CP - 428. Four days in Week 20 unloads are tracking ahead of last week's performance by more than 300 unloads.
 - There are 1,100 cars on site at Vancouver with 900 cars arriving at the port in the last 24 hours.
 - CN and CP have more than 1,200 cars in British Columbia en route to Vancouver, with 850 cars at Kamloops and west, and 52% of traffic moving on CP.
- Prince Rupert
 - Prince Rupert reported 187 unloads, now behind last week's unloads after four days by 150 unloads.
 - Loads on wheels now above 1,000 cars - presently at 1,569 cars.
 - There are more than 500 cars west of Jasper en route to Prince Rupert.
 - There are more than 300 cars on site at Prince Rupert with more than 250 cars arriving at the port in the last 24 hours.
- Thunder Bay
 - 266 unloads were reported at Thunder Bay yesterday. Four days in Week 20 unloads are tracking behind last week's pace by more than 250 unloads.
 - There are more than 1,000 cars on site at Thunder Bay with 200 cars arriving at the port in the prior 24 hours.
 - There are more than 600 cars en route to Thunder Bay from Winnipeg and east.

Daily Loads on Wheels - 12/19/2019

	E Canada	Prince Rupert	Thunder Bay	USA/MEX	Vancouver	Total
CN	752	1,569	891	186	2,465	5,863
CP	38		1,903	494	2,771	5,206
Short Line	1				31	32
US Rail				140		140
	791	1,569	2,794	820	5,267	11,241

Change in Loads on Wheels - Prior 24 Hours

	E Canada	Prince Rupert	Thunder Bay	USA/MEX	Vancouver	Total
CN	-45	5	124	-2	-20	62
CP	-21		-178	-26	116	-109
Short Line	-14				-12	-26
US Rail				-10		-10
	-80	5	-54	-38	84	-83

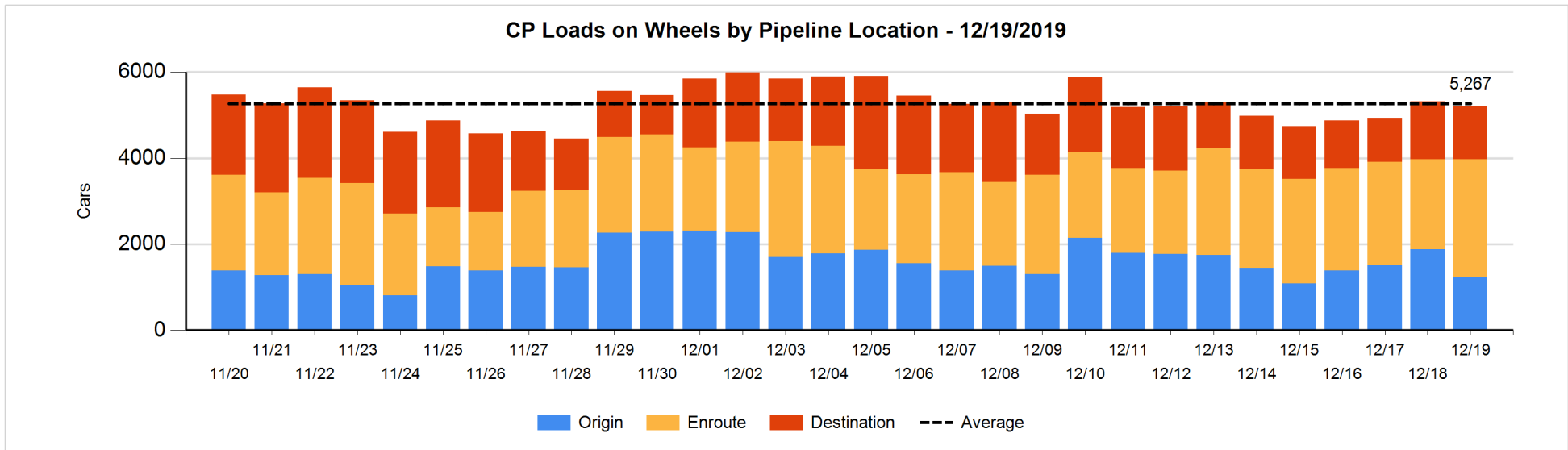
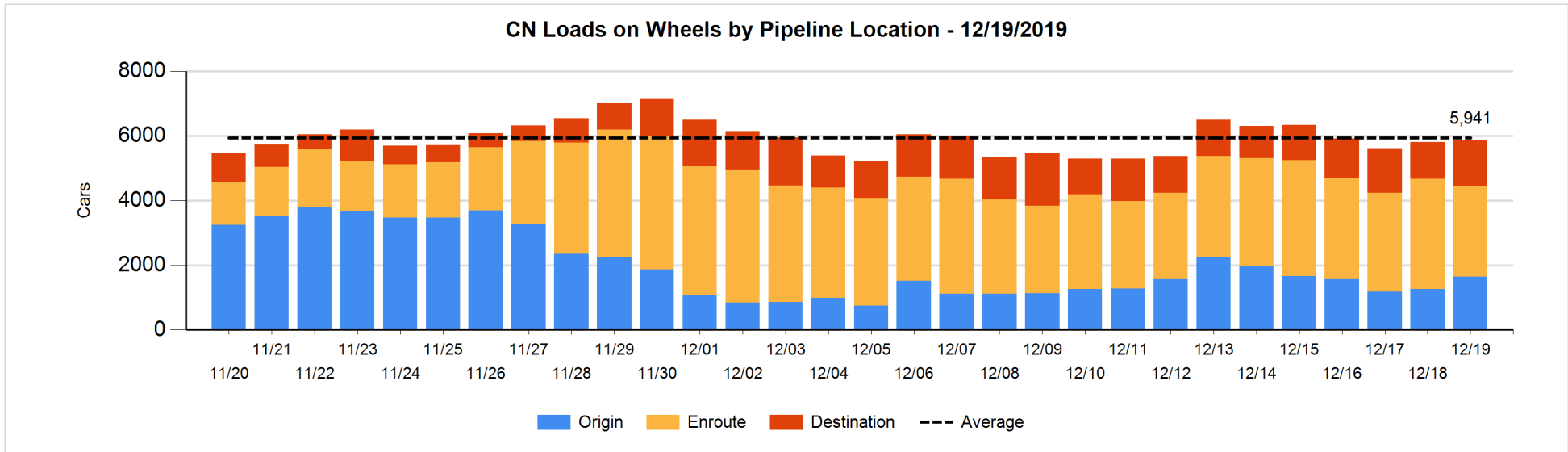


Daily Loads on Wheels By Pipeline Location - 12/19/2019

	E Canada	Prince Rupert	Thunder Bay	USA/MEX	Vancouver	Total
CN						
Origin	96	602	198	21	718	1,635
Enroute	558	640	434	112	1,074	2,818
Destination	98	327	259	53	673	1,410
	752	1,569	891	186	2,465	5,863
CP						
Origin	8		192	113	933	1,246
Enroute	30		889	364	1,440	2,723
Destination			822	17	398	1,237
	38		1,903	494	2,771	5,206
US Rail / Short Line						
Origin						
Enroute				22		22
Destination	1			118	31	150
	1			140	31	172

Change in Daily Loads on Wheels By Pipeline Location - Prior 24 Hours

	E Canada	Prince Rupert	Thunder Bay	USA/MEX	Vancouver	Total
CN						
Origin	-22	216	97	6	87	384
Enroute	-36	-300	101	-4	-365	-604
Destination	13	89	-74	-4	258	282
	-45	5	124	-2	-20	62
CP						
Origin	-21		-638	-101	129	-631
Enroute	0		466	58	101	625
Destination			-6	17	-114	-103
	-21		-178	-26	116	-109
US Rail / Short Line						
Origin						
Enroute	-14			-3		-17
Destination	0			-7	-12	-19
	-14			-10	-12	-36

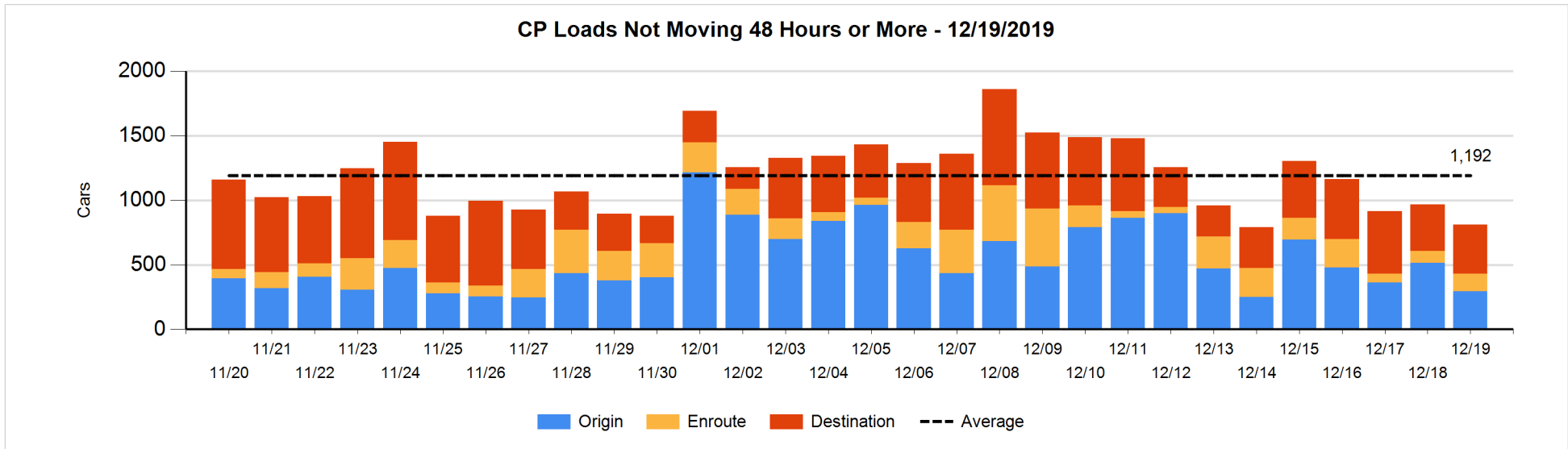
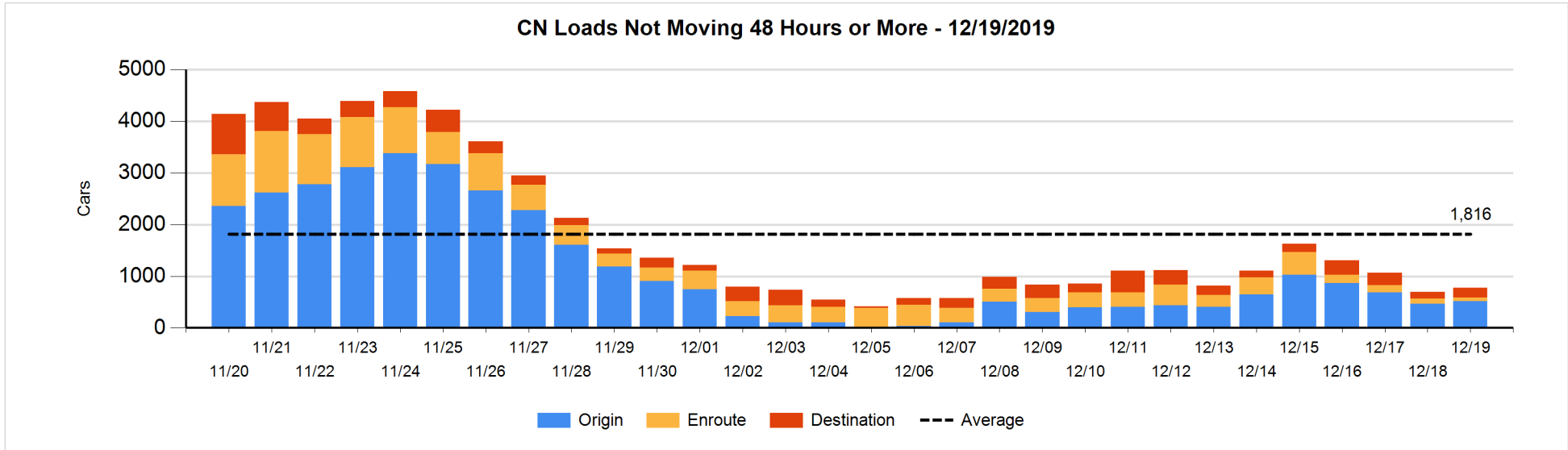


Loads Not Moving 48 Hours or More - 12/19/2019

	E Canada	Prince Rupert	Thunder Bay	USA/MEX	Vancouver	Total
CN						
Origin		386		15	114	515
Enroute	3	41	2	6	21	73
Destination	7	93	29	7	52	188
	10	520	31	28	187	776
CP						
Origin	3		171	112	8	294
Enroute	4		19	51	61	135
Destination			335		48	383
	7		525	163	117	812
US Rail / Short Line						
Origin						
Enroute				13		13
Destination				17	26	43
				30	26	56

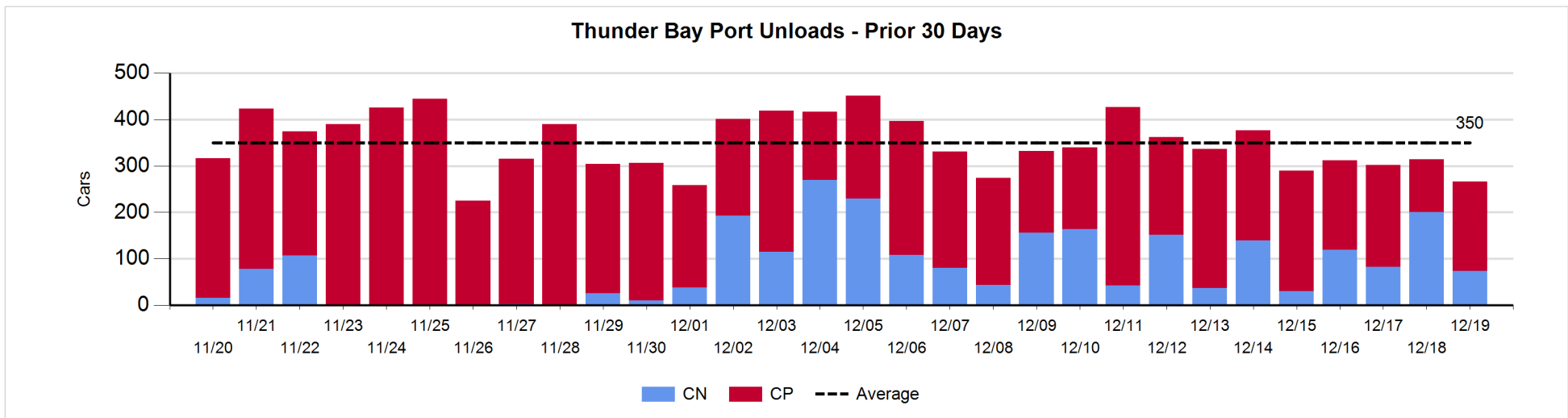
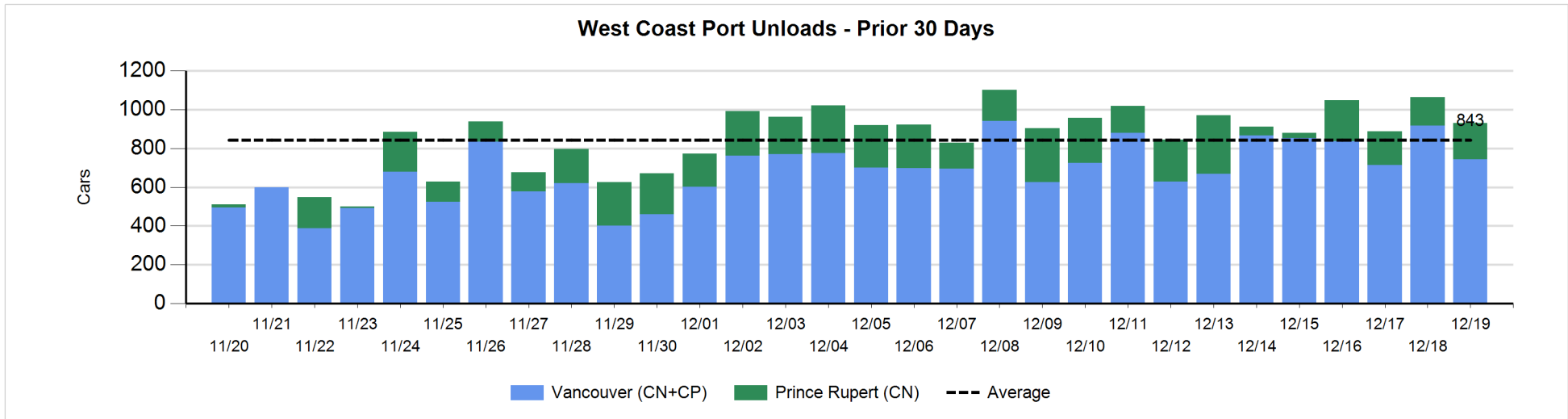
Change in Loads Not Moving 48 Hours or More - 12/19/2019

	E Canada	Prince Rupert	Thunder Bay	USA/MEX	Vancouver	Total
CN						
Origin	-1	0		6	48	53
Enroute	1	-25	-1	-10	9	-26
Destination	-2	91	-69	4	32	56
	-2	66	-70	0	89	83
CP						
Origin	-26		0	-89	-107	-222
Enroute	0		4	35	7	46
Destination			73		-51	22
	-26		77	-54	-151	-154
US Rail / Short Line						
Origin						
Enroute				-2		-2
Destination				2	-6	-4
				0	-6	-6



Port Unloads - 12/19/2019

	Prince Rupert	Vancouver	West Coast Total	Thunder Bay	Total
CN	187	315	502	74	576
CP		428	428	192	620
	187	743	930	266	1,196



Port Terminal Status

Vancouver

Daily Activity for 12/19/2019

	Cars Arrived	Cars Received in Interchange	Cars Delivered in Interchange	Cars Placed for Unloading	Loads on Wheels at Destination As of 12/19/2019
CN	550	25	204	399	673
CP	341	204	29	451	400
SRY		4		11	31

Port Unloads

	12/19	12/18	Week To Date	Last Week
CN	315	529	1,490	2,443
CP	428	388	1,721	2,802
SRY	13	5	39	83

Age Profile of Loaded Cars Waiting Placement for Unloading

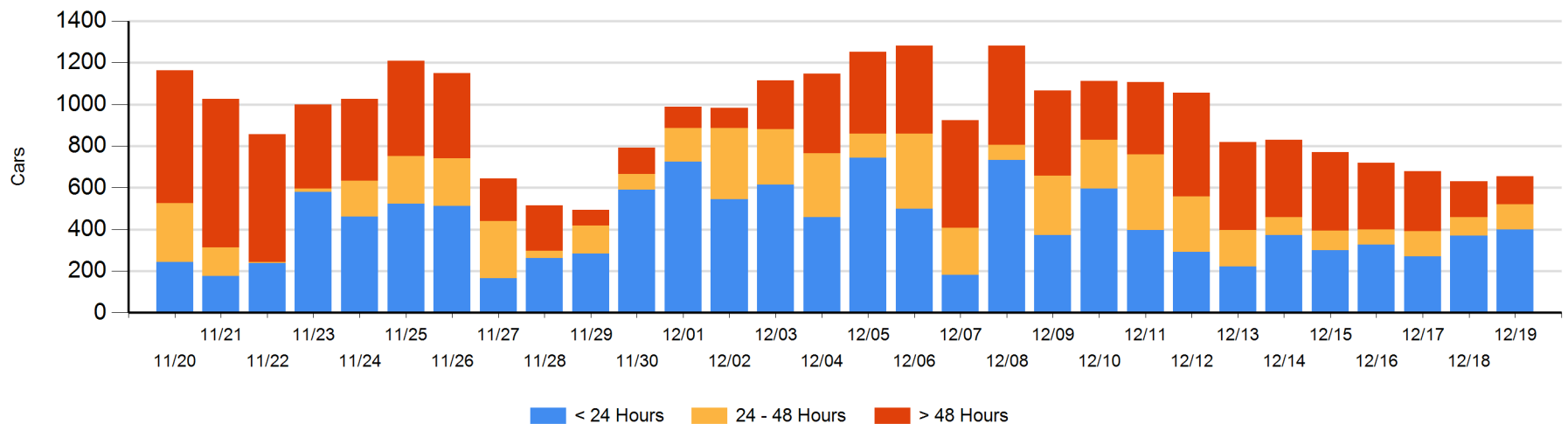
Today

	< 24 Hrs	24 - 48 Hrs	> 48-72 Hrs	> 72 Hrs	Total On Hand
CN	343	76	14	34	467
CP	55	46	39	49	189
SRY					0

Change in Last 24 Hours

	< 24 Hrs	24-48 Hrs	48 - 72 Hrs	> 72 Hrs
CN	245	51	2	-24
CP	-217	-17	4	-18
SRY				

Loaded Cars on Hand Vancouver Waiting for Placement - Last 30 Days All Railways



Port Terminal Status

Prince Rupert

Daily Activity for 12/19/2019

	Cars Arrived	Cars Received in Interchange	Cars Delivered in Interchange	Cars Placed for Unloading	Loads on Wheels at Destination As of 12/19/2019
CN	276			226	327

Port Unloads

	12/19	12/18	Week To Date	Last Week
CN	187	146	718	1,239

Age Profile of Loaded Cars Waiting Placement for Unloading

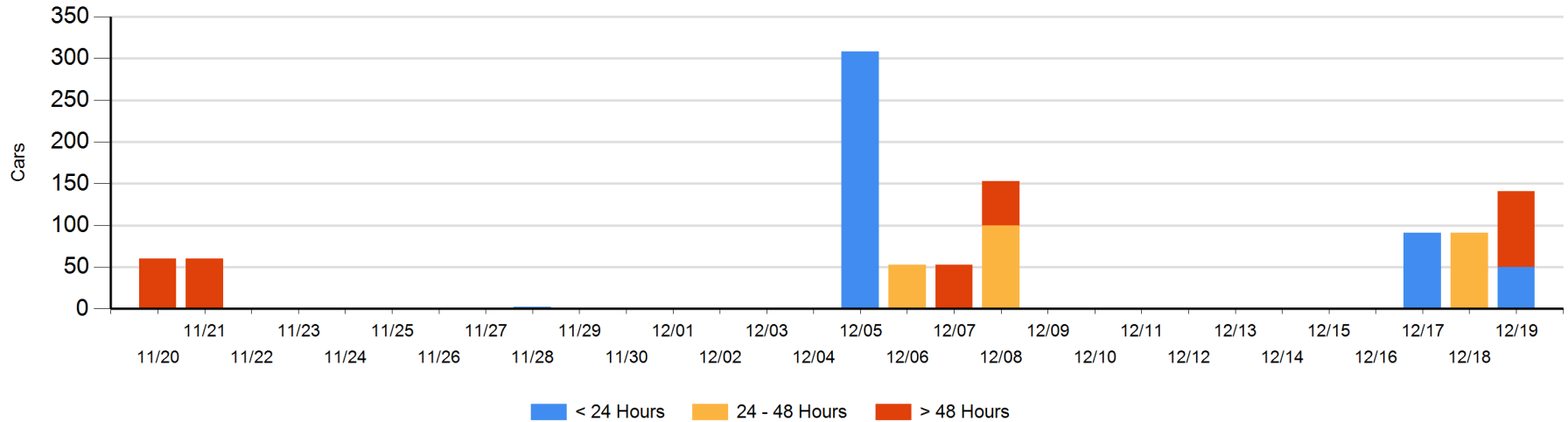
Today

	< 24 Hrs	24 - 48 Hrs	> 48-72 Hrs	> 72 Hrs	Total On Hand
CN	50		91		141

Change in Last 24 Hours

	< 24 Hrs	24-48 Hrs	48 - 72 Hrs	> 72 Hrs
CN	50	-91	91	

Loaded Cars on Hand Prince Rupert Waiting for Placement - Last 30 Days All Railways



Port Terminal Status

Thunder Bay

Daily Activity for 12/19/2019

	Cars Arrived	Cars Received in Interchange	Cars Delivered in Interchange	Cars Placed for Unloading	Loads on Wheels at Destination As of 12/19/2019
CN				191	259
CP	192			207	822

Port Unloads

	12/19	12/18	Week To Date	Last Week
CN	74	200	476	720
CP	192	114	718	1,743

Age Profile of Loaded Cars Waiting Placement for Unloading

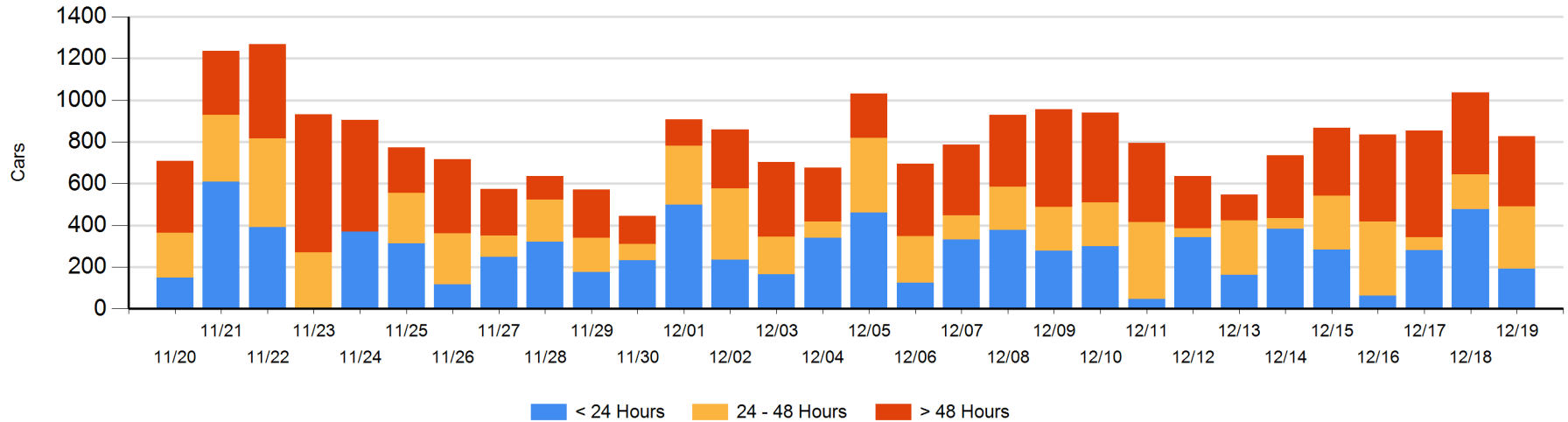
Today

	< 24 Hrs	24 - 48 Hrs	> 48-72 Hrs	> 72 Hrs	Total On Hand
CN		47	2	36	85
CP	192	252	112	185	741

Change in Last 24 Hours

	< 24 Hrs	24-48 Hrs	48 - 72 Hrs	> 72 Hrs
CN	-47	-8	1	-137
CP	-237	140	84	-7

Loaded Cars on Hand Thunder Bay Waiting for Placement - Last 30 Days All Railways



Measurement Definitions

Loads on Wheels	<p>Count of loaded rail cars including all rail cars that have been released loaded at origin and have not been reported by the railway as unloaded at destination.</p> <p>Counts include all rail cars (hopper cars and boxcars) moving within a pipeline.</p>
Loads Not Moving	<p>Loaded rail cars for which the railways have not reported a movement event for 48 hours or more whether the rail car is at origin, enroute or at destination.</p>
Port Unloads	<p>Count of rail cars reported by railways as unloaded at the western port destinations of Vancouver, Prince Rupert and Thunder Bay.</p> <p>Unload counts include all rail cars (hopper cars and boxcars) unloaded by all receivers including major port terminals, transloaders and other receivers.</p>
Cars Arrived	<p>Count of rail cars reported as arrived at the destination railway terminal.</p>
Cars Received in Interchange	<p>Count of rail cars received in interchange by each railway within a destination railway terminal. Interchange activity is tracked for the Vancouver and Thunder Bay pipelines as applicable.</p>
Cars Delivered in Interchange	<p>Count of rail cars delivered in interchange by each railway within a destination railway terminal. Interchange activity is tracked for the Vancouver and Thunder Bay pipelines as applicable.</p>
Cars Placed for Unloading	<p>Count of rail cars reported by the railways as placed loaded at the receiver's facility for unloading.</p>
Loads on Wheels at Destination	<p>Count of rail cars that remain under load within the destination railway terminal including rail cars that have been reported as placed for unloading but not yet reported as unloaded.</p>
Waiting Placement for Unloading	<p>Count of rail cars that have been reported as arrived at the destination railway terminal but not reported as placed for unloading by the railway.</p> <p>For the Ports of Vancouver, Prince Rupert and Thunder Bay the count of rail cars waiting placement for unloading is categorized by age – i.e. the elapsed time from arrival at destination to the current report date.</p>