

**SPEED READ**

- Loads on wheels gained overnight, reflecting a rise in CN volumes offset by reduced CP volumes. On a net basis, volumes increased due to higher traffic across all corridors other than Thunder Bay.
- Network fluidity deteriorated materially overnight, led by an increase in idle car counts on both CN and CP by 18% (+516) and 64% (+938), respectively. The total count of cars for 4+ days on both railways increased 24% (+478) overnight - currently at 2,511 cars.
- The significant increase in loads not moving is at least in part attributable to the track outage on CN's mainline between Boston Bar and Vancouver directly impacting traffic moving to and from Vancouver. This will impact the movement of both loads destined to Vancouver and will slow the movement of empty hopper cars returning to country loading positions likely resulting in a negative impact on order fulfillment performance during week 27.
- Approximately 88% of the more than 5,800 cars that have not moved for 48 hours or more are destined to Vancouver. The outage is impacting both CN and CP in this corridor.
- Week 26 unloads concluded behind prior week's performance by more than 300 unloads, reflecting reduced unloads at Vancouver and Thunder Bay offset by improved week over week performance at Prince Rupert.

=====

**Loads on Wheels**

- Loads on wheels increased for the fourth consecutive day, up 2% (+292) overnight, due to higher traffic on CN offset by reduced volumes on CP - combined total at 12,326, the highest seen in the last 30 days, and 13% above the trailing 30-day average.
- On a net basis, the rise in loads on wheels indicates higher traffic across all corridors other than Thunder Bay.
- CN volumes gained 3% (+217) overnight and have now increased for the third consecutive day, with higher volumes across all corridors other than Thunder Bay. System wide CN loads on wheels presently at 6,919 and 10% above the trailing 30-day average.
- CP volumes decreased marginally by (-16) overnight, driven by a decline in volumes across all corridors other than Vancouver. CP system wide loads on wheels presently at 5,167 and 13% above the trailing 30-day average.
- Vancouver presently at 8,176, the highest seen in the last 30 days, gained 2% (+184) overnight, now 21% above the trailing 30-day average.
- The Prince Rupert pipeline currently at 1,859, gained 2% (+35) overnight, and 3% below the trailing 30-day average.
- Thunder Bay volumes declined marginally by (-1) overnight - presently at 448 and 7% below the trailing 30-day average, with 76% of traffic moving on CP.

**Hopper Car Rationing**

- CN rationed 1,283 hopper car orders in week 25 on the heels of rationing 730 orders in the prior week. 90% of rationed orders in week 25 were for the Prince Rupert corridor.

**Loads Not Moving**

- **The count of cars not moving for 48+ hours gained for the third consecutive day, up 33% (+1,454) overnight, marking higher counts on both CN and CP. Idle car counts presently at 5,848, the highest seen in the last 30 days, and 61% above the trailing 30-day average.**
- CN
  - **The count of idle cars for 48+ hours gained 18% (+516) overnight and have now increased for the fifth consecutive day - presently at 3,442 cars, the highest seen in the last 30 days.**
  - **The number of cars idle for 4+ days gained 37% (+552) overnight and have now increased for the third consecutive day - currently at 2,030 cars, the highest seen in the last 30 days.**
  - **The count of cars not moving for 7+ days gained 17% (+125) overnight and have now increased for the third consecutive day - currently at 848 cars.**

- Vancouver represents 87% of all idle cars.
- In total 56% of all idle cars are dwelling at origin locations.
- CP
  - **CP idle car counts for 48+ hours increased 64% (+938) overnight - currently at 2,406 cars.**
  - The number of cars idle for 4+ days declined 13% (-74) overnight - presently at 481 cars.
  - The number of cars idle for 7+ days decreased 24% (-49) overnight - presently at 154 cars.
  - Vancouver accounts for 88% of all idle cars.
  - In total 62% of all idle cars are dwelling at origin locations.

### **Port Performance**

- CN and CP reported a total of 318 cars unloaded at the three major ports, the lowest seen in the last 30 days, now 63% below the trailing 30-day average. Week 26 unloads concluded behind last week's pace by more than 300 unloads, reflecting reduced unloads at Vancouver and Thunder Bay offset by higher unloads at Prince Rupert.
- Vancouver
  - 253 unloads, the lowest seen in the last 30 days, was reported by CN and CP at the Port of Vancouver; CN - 05 and CP - 248. Week 26 unloads concluded behind last week's performance by more than 250 unloads.
  - There are 550 cars on site at Vancouver with more than 100 cars arriving at the port in the last 24 hours.
  - CN and CP have 1,950 cars in British Columbia en route to Vancouver, with 750 cars at Kamloops and west, and 54% of traffic moving on CP.
- Prince Rupert
  - Prince Rupert reported 64 unloads, concluded ahead of last week's unloads by 16 unloads.
  - Loads on wheels remain above 1,000 cars - presently at 1,858 cars.
  - There are 800 cars west of Jasper en route to Prince Rupert.
  - There are 160 cars on site at Prince Rupert with 200 cars arriving at the port in the last 24 hours.
- Thunder Bay
  - 1 unload reported at Thunder Bay yesterday. Week 26 unloads ended behind last week's pace by more than 50 unloads.
  - There are more than 200 cars on site at Thunder Bay with zero cars arriving at the port in the prior 24 hours.
  - There are more than 150 cars en route to Thunder Bay from Winnipeg and east.

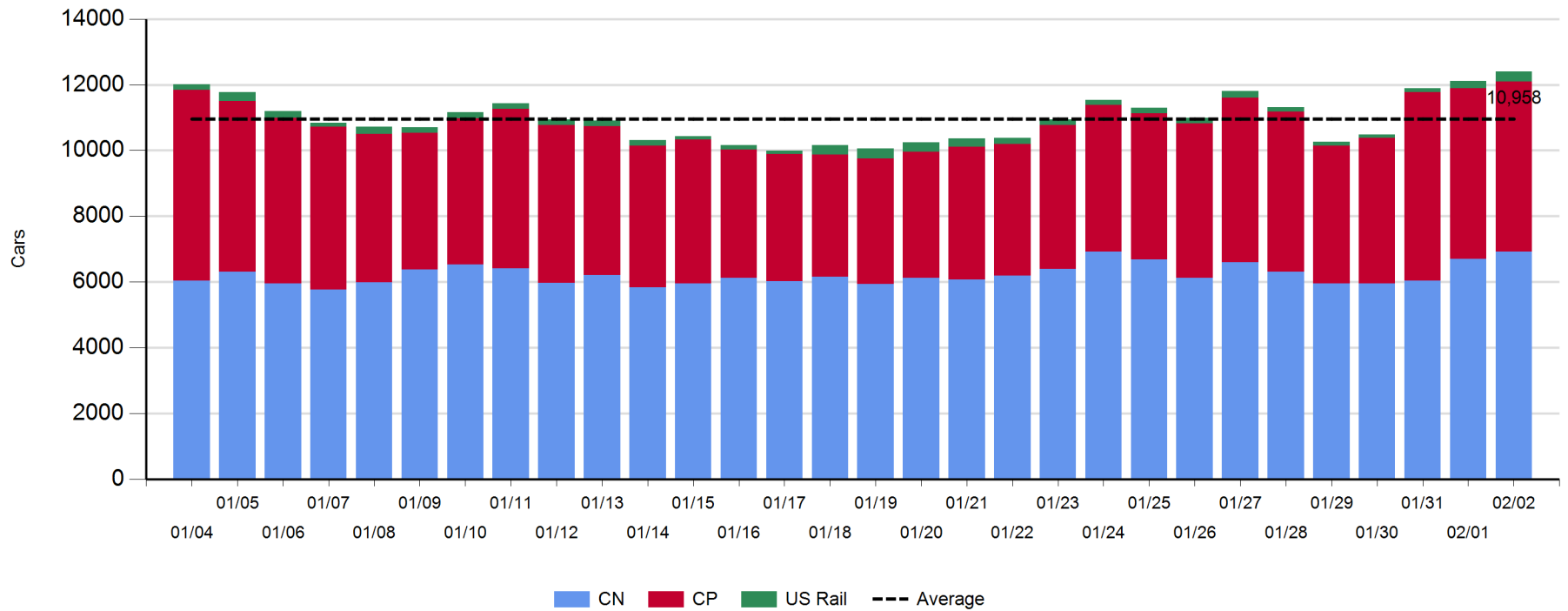
**Daily Loads on Wheels - 2/2/2020**

	E Canada	Prince Rupert	Thunder Bay	USA/MEX	Vancouver	Total
CN	742	1,858	106	253	3,960	6,919
CP	358	1	342	266	4,200	5,167
Short Line	119				16	135
US Rail				180		180
	1,219	1,859	448	699	8,176	12,401

**Change in Loads on Wheels - Prior 24 Hours**

	E Canada	Prince Rupert	Thunder Bay	USA/MEX	Vancouver	Total
CN	59	35	-1	1	123	217
CP	-1	0	0	-81	66	-16
Short Line	0				-4	-4
US Rail				96	-1	95
	58	35	-1	16	184	292

**Loads on Wheels - Prior 30 Days**

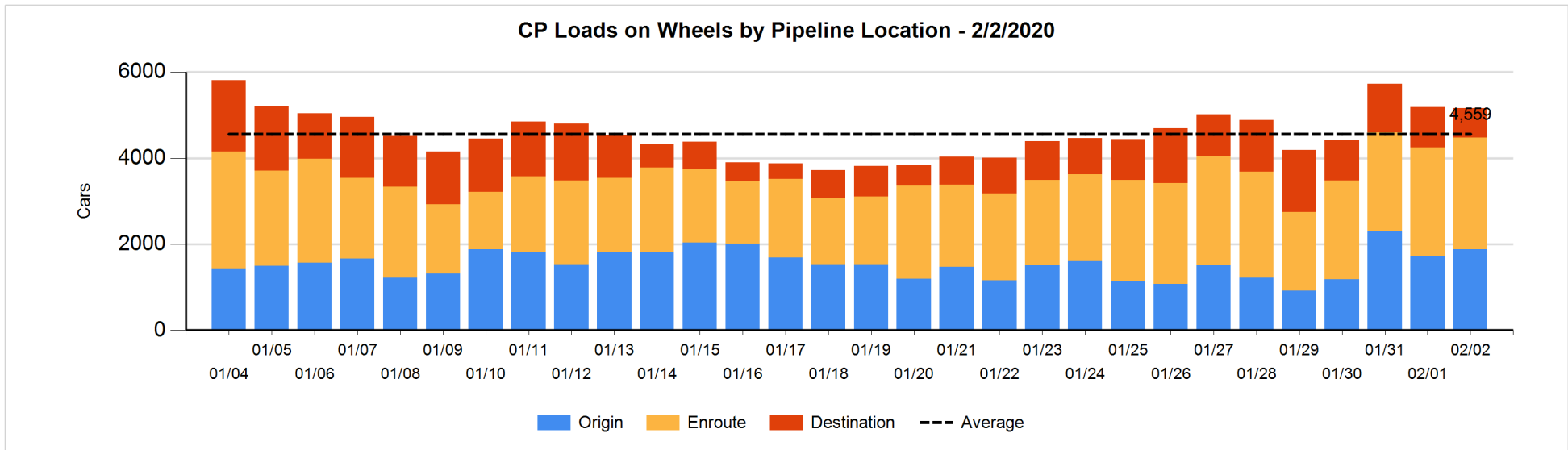
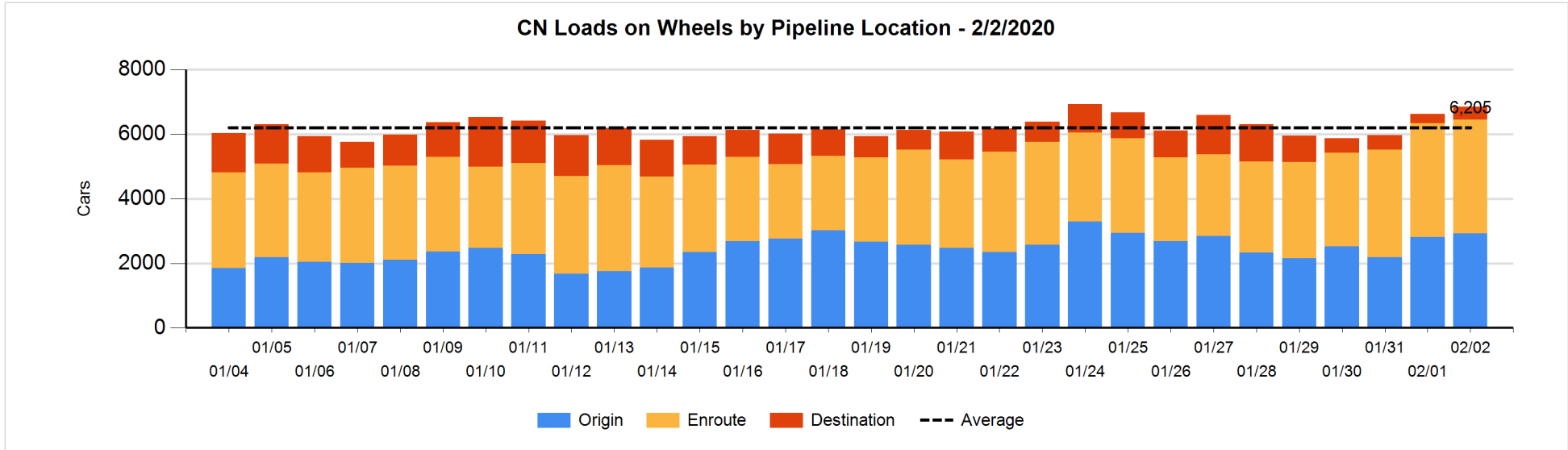


**Daily Loads on Wheels By Pipeline Location - 2/2/2020**

	E Canada	Prince Rupert	Thunder Bay	USA/MEX	Vancouver	Total
CN						
Origin	104	680			2,147	2,931
Enroute	493	1,018	103	243	1,661	3,518
Destination	145	160	3	10	78	396
	742	1,858	106	253	3,886	6,845
CP						
Origin	121		62	112	1,587	1,882
Enroute	237		66	128	2,167	2,598
Destination		1	214	26	446	687
	358	1	342	266	4,200	5,167
US Rail / Short Line						
Origin						
Enroute	110			54		164
Destination	9			126	16	151
	119			180	16	315

**Change in Daily Loads on Wheels By Pipeline Location - Prior 24 Hours**

	E Canada	Prince Rupert	Thunder Bay	USA/MEX	Vancouver	Total
CN						
Origin	-53	99			71	117
Enroute	154	-207	0	0	40	-13
Destination	-42	143	-1	1	12	113
	59	35	-1	1	123	217
CP						
Origin	-114		-65	17	325	163
Enroute	113		65	1	-108	71
Destination		0	0	-99	-151	-250
	-1	0	0	-81	66	-16
US Rail / Short Line						
Origin						
Enroute	0			-7		-7
Destination	0			103	-5	98
	0			96	-5	91



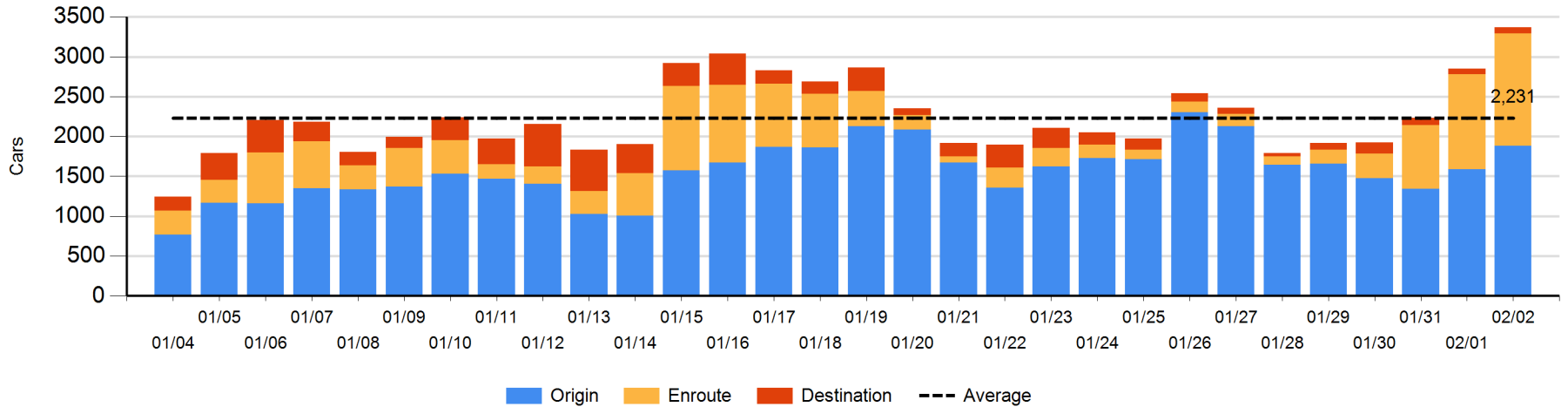
**Loads Not Moving 48 Hours or More - 2/2/2020**

	E Canada	Prince Rupert	Thunder Bay	USA/MEX	Vancouver	Total
CN						
Origin	1	181			1697	1879
Enroute	120	57		10	1226	1413
Destination	43	2	2	9	20	76
	164	240	2	19	2943	3368
CP						
Origin	121		62	37	1262	1482
Enroute	2			2	728	732
Destination		1	42	24	125	192
	123	1	104	63	2115	2406
US Rail / Short Line						
Origin						
Enroute				38		38
Destination	9			21	3	33
	9			59	3	71

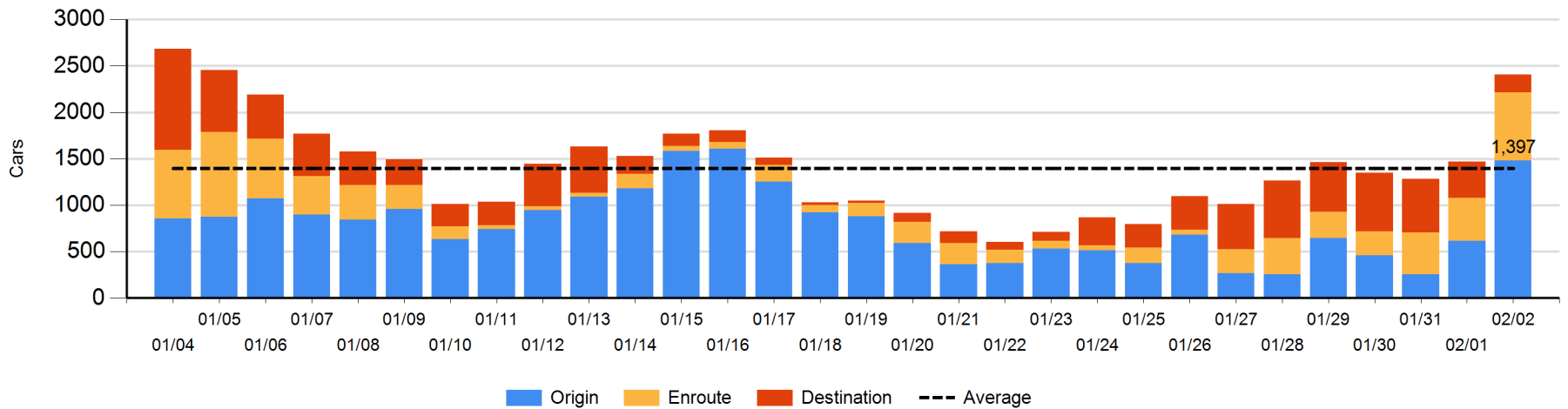
**Change in Loads Not Moving 48 Hours or More - 2/2/2020**

	E Canada	Prince Rupert	Thunder Bay	USA/MEX	Vancouver	Total
CN						
Origin	1	77			215	293
Enroute	-17	4		3	228	218
Destination	3	2	-1	1	0	5
	-13	83	-1	4	443	516
CP						
Origin	3		62	25	776	866
Enroute	-2		-1	1	273	271
Destination		0	38	8	-245	-199
	1	0	99	34	804	938
US Rail / Short Line						
Origin						
Enroute				-1		-1
Destination	9			17	-3	23
	9			16	-3	22

**CN Loads Not Moving 48 Hours or More - 2/2/2020**



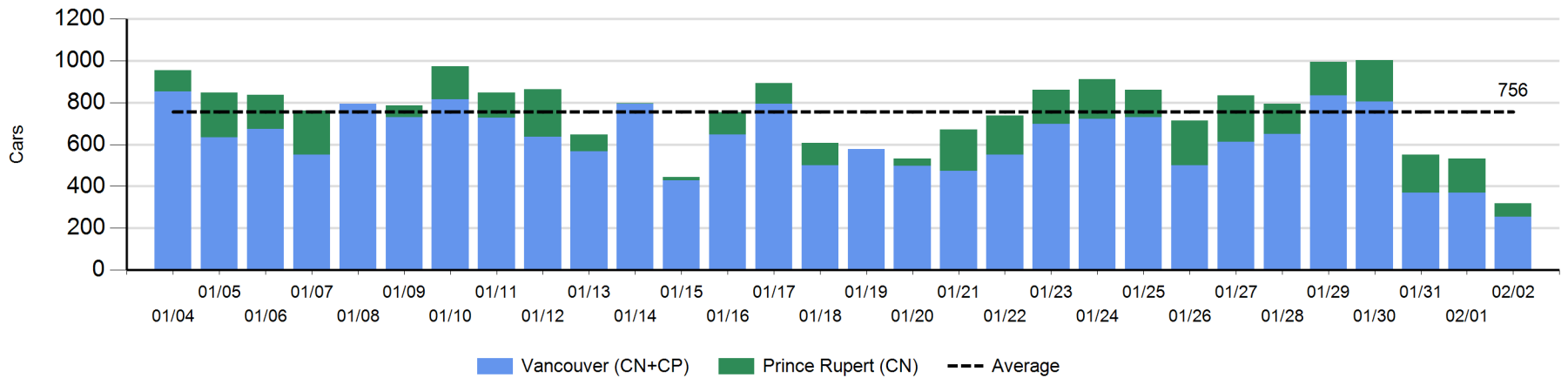
**CP Loads Not Moving 48 Hours or More - 2/2/2020**



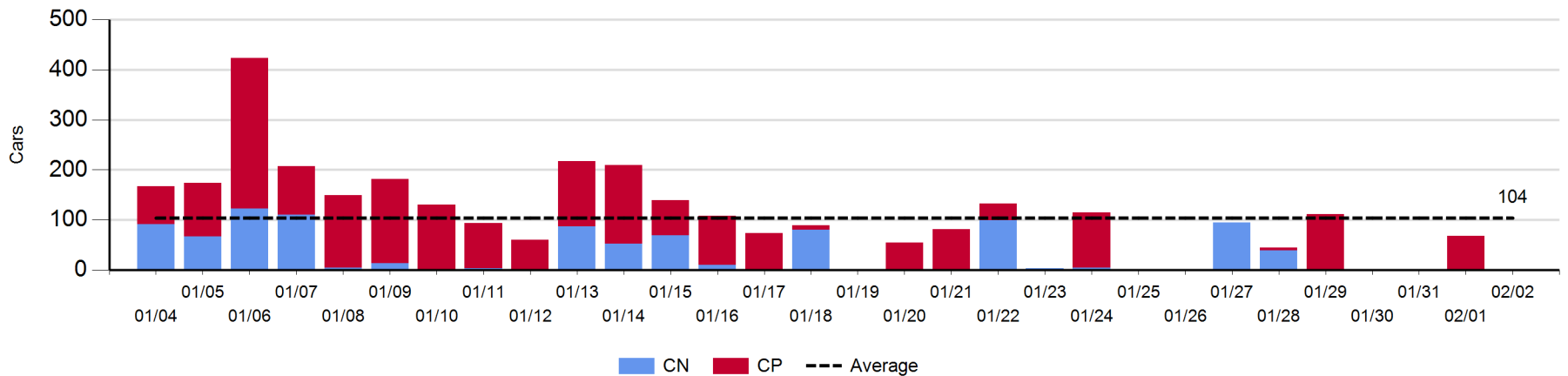
**Port Unloads - 2/2/2020**

	Prince Rupert	Vancouver	West Coast Total	Thunder Bay	Total
CN	64	5	69	1	70
CP		248	248		248
	64	253	317	1	318

**West Coast Port Unloads - Prior 30 Days**



**Thunder Bay Port Unloads - Prior 30 Days**





**Port Terminal Status**

**Vancouver**

Daily Activity for 2/2/2020

	Cars Arrived	Cars Received in Interchange	Cars Delivered in Interchange	Cars Placed for Unloading	Loads on Wheels at Destination As of 2/2/2020
CN	4	33	1	12	78
CP	109	1	33	320	446
SRY					16

**Port Unloads**

	02/02	02/01	Week To Date	Last Week
CN	5	44	1,678	2,026
CP	248	325	2,215	2,144
SRY	4	11	59	59

**Age Profile of Loaded Cars Waiting Placement for Unloading**

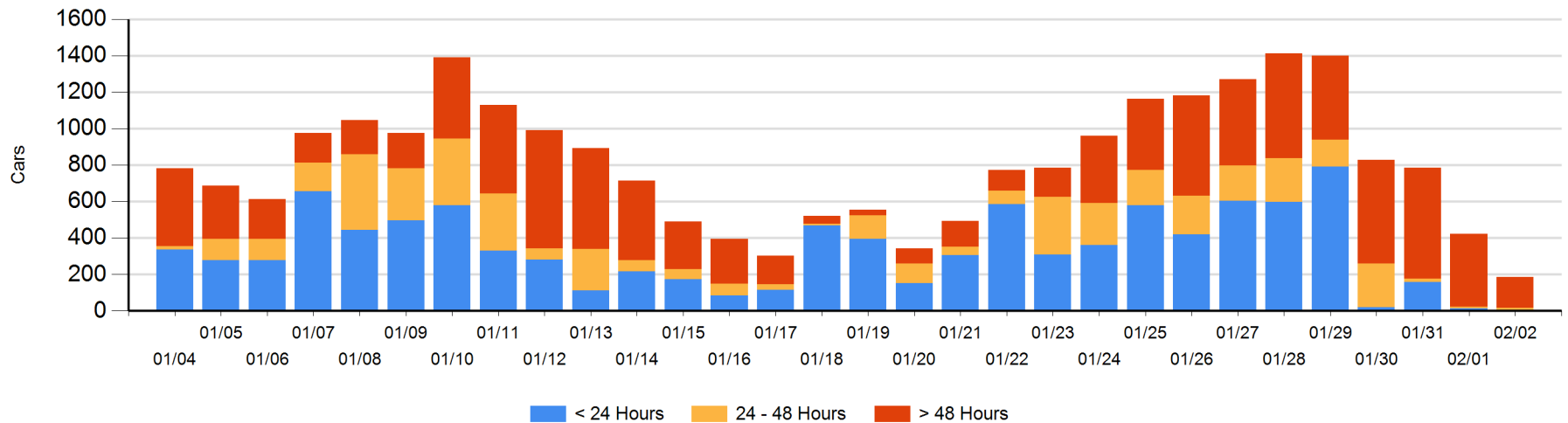
**Today**

	< 24 Hrs	24 - 48 Hrs	> 48-72 Hrs	> 72 Hrs	Total On Hand
CN	4		2	20	26
CP		13	5	141	159
SRY					0

**Change in Last 24 Hours**

	< 24 Hrs	24-48 Hrs	48 - 72 Hrs	> 72 Hrs
CN	4	-4	2	-71
CP	-13	7	-15	-147
SRY				

**Loaded Cars on Hand Vancouver Waiting for Placement - Last 30 Days All Railways**



**Port Terminal Status**

**Prince Rupert**

Daily Activity for 2/2/2020

	Cars Arrived	Cars Received in Interchange	Cars Delivered in Interchange	Cars Placed for Unloading	Loads on Wheels at Destination As of 2/2/2020
CN	207			207	160

**Port Unloads**

	02/02	02/01	Week To Date	Last Week
CN	64	164	1,135	1,119

**Age Profile of Loaded Cars Waiting Placement for Unloading**

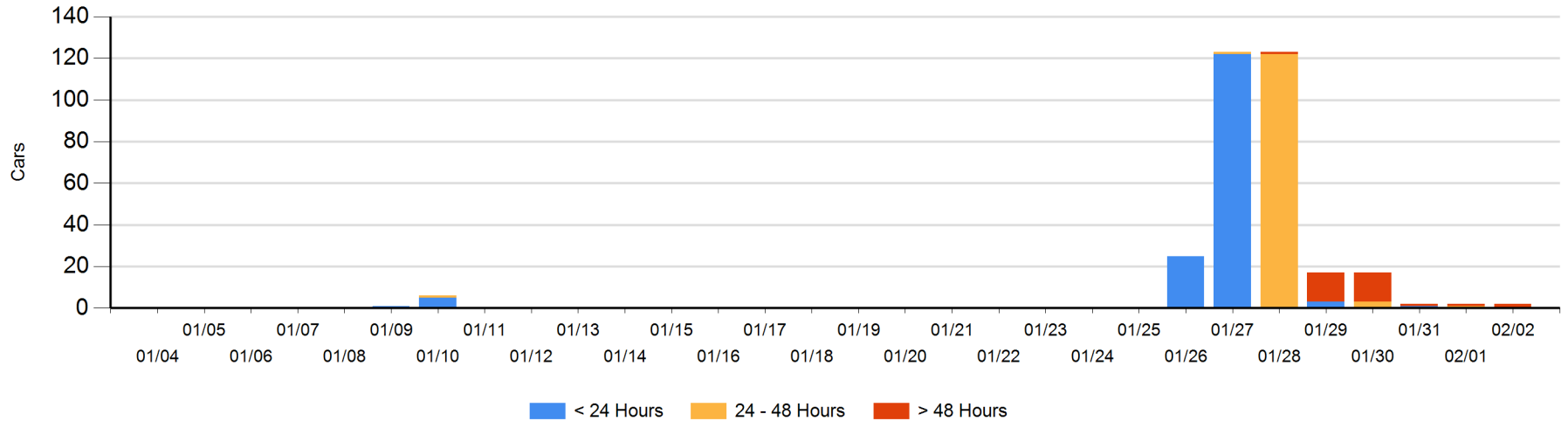
**Today**

	< 24 Hrs	24 - 48 Hrs	> 48-72 Hrs	> 72 Hrs	Total On Hand
CN			1	1	2

**Change in Last 24 Hours**

	< 24 Hrs	24-48 Hrs	48 - 72 Hrs	> 72 Hrs
CN		-1	1	0

Loaded Cars on Hand Prince Rupert Waiting for Placement - Last 30 Days All Railways



**Port Terminal Status**

**Thunder Bay**

Daily Activity for 2/2/2020

	Cars Arrived	Cars Received in Interchange	Cars Delivered in Interchange	Cars Placed for Unloading	Loads on Wheels at Destination As of 2/2/2020
CN					3
CP				62	214

**Port Unloads**

	02/02	02/01	Week To Date	Last Week
CN	1		135	108
CP		68	186	281

**Age Profile of Loaded Cars Waiting Placement for Unloading**

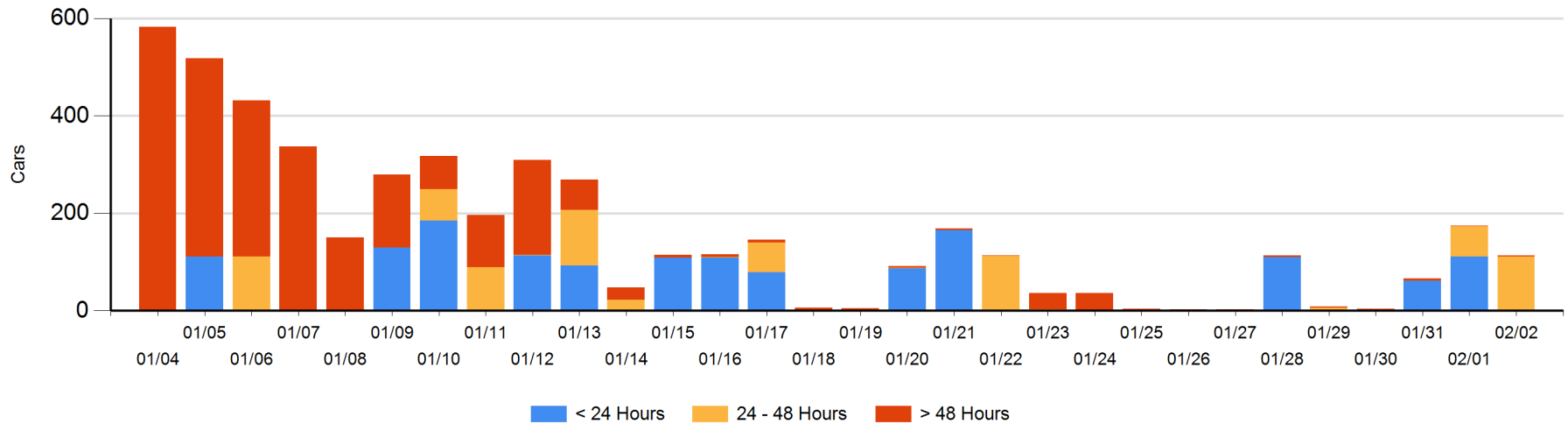
**Today**

	< 24 Hrs	24 - 48 Hrs	> 48-72 Hrs	> 72 Hrs	Total On Hand
CN		1			1
CP		110		2	112

**Change in Last 24 Hours**

	< 24 Hrs	24-48 Hrs	48 - 72 Hrs	> 72 Hrs
CN	-1	1		
CP	-110	48		0

Loaded Cars on Hand Thunder Bay Waiting for Placement - Last 30 Days All Railways



## Measurement Definitions

Loads on Wheels	<p>Count of loaded rail cars including all rail cars that have been released loaded at origin and have not been reported by the railway as unloaded at destination.</p> <p>Counts include all rail cars (hopper cars and boxcars) moving within a pipeline.</p>
Loads Not Moving	<p>Loaded rail cars for which the railways have not reported a movement event for 48 hours or more whether the rail car is at origin, enroute or at destination.</p>
Port Unloads	<p>Count of rail cars reported by railways as unloaded at the western port destinations of Vancouver, Prince Rupert and Thunder Bay.</p> <p>Unload counts include all rail cars (hopper cars and boxcars) unloaded by all receivers including major port terminals, transloaders and other receivers.</p>
Cars Arrived	<p>Count of rail cars reported as arrived at the destination railway terminal.</p>
Cars Received in Interchange	<p>Count of rail cars received in interchange by each railway within a destination railway terminal. Interchange activity is tracked for the Vancouver and Thunder Bay pipelines as applicable.</p>
Cars Delivered in Interchange	<p>Count of rail cars delivered in interchange by each railway within a destination railway terminal. Interchange activity is tracked for the Vancouver and Thunder Bay pipelines as applicable.</p>
Cars Placed for Unloading	<p>Count of rail cars reported by the railways as placed loaded at the receiver's facility for unloading.</p>
Loads on Wheels at Destination	<p>Count of rail cars that remain under load within the destination railway terminal including rail cars that have been reported as placed for unloading but not yet reported as unloaded.</p>
Waiting Placement for Unloading	<p>Count of rail cars that have been reported as arrived at the destination railway terminal but not reported as placed for unloading by the railway.</p> <p>For the Ports of Vancouver, Prince Rupert and Thunder Bay the count of rail cars waiting placement for unloading is categorized by age – i.e. the elapsed time from arrival at destination to the current report date.</p>