

**SPEED READ**

- Loads on wheels increased overnight, marking an increase in both CN and CP volumes. On a net basis, volumes rose due to higher volumes in the Vancouver corridor offset by lower volumes in all other corridors.
- Network fluidity deteriorated overnight, led by an increase in idle car counts on both CN and CP by 11% (+395) and 15% (+352), respectively. The total count of cars for 4+ days on both railways rose 28% (+714) overnight - now at 3,225 cars, the highest seen in the last 30 days.
- The count of loaded cars not moving for both CN and CP continue to climb, now rising above 6,500 cars representing 51% of all loads on wheels. Nearly 5,600 of these are destined to Vancouver.
- There are reports today that CN has experienced another track outage between Boston Bar and Vancouver with currently no estimated time for return to service.
- This disruption has resulted in declining unloads at Vancouver as loads are delayed in reaching destination. As of midnight last night there are fewer than 400 loads in Vancouver available for unload.
- It is reasonable to expect that unloads will remain low for the balance of this week and that the availability of empty hopper cars for country loading will be reduced affecting order fulfillment performance in week 27.
- One day in Week 27 unloads now behind prior week's performance by 350 unloads, reflecting reduced unloads at Vancouver offset by improved week over week performance at Thunder Bay and Prince Rupert.

=====

**Loads on Wheels**

- Loads on wheels increased for the fifth consecutive day, up 3% (+411) overnight, due to higher volumes on both CN and CP - combined total at 12,812, the highest seen in the last 30 days, and 17% above the trailing 30-day average.
- On a net basis, the increase in loads on wheels indicates higher volumes in the Vancouver corridor offset by lower volumes in all other corridors.
- CN volumes rose for the fourth consecutive day, up 4% (+307) overnight, with higher traffic in the Vancouver corridor offset by reduced traffic in the Prince Rupert, E. Canada and USA/MEX corridors. System wide CN loads on wheels presently at 7,226, the highest seen in the last 30 days, and 16% above the trailing 30-day average.
- CP volumes rose 3% (+168) overnight, driven by a rise in volumes in the Vancouver and E. Canada corridors offset by a decline in volumes in the USA/MEX corridor. CP system wide loads on wheels now at 5,334 and 17% above the trailing 30-day average.
- Vancouver currently at 9,027, the highest seen in the last 30 days, rose significantly by 10% (+851) overnight, now 34% above the trailing 30-day average.
- The Prince Rupert pipeline now at 1,733, decreased 7% (-126) overnight, and 10% below the trailing 30-day average.
- Thunder Bay volumes fell significantly by 31% (-139) overnight - currently at 309 and 32% below the trailing 30-day average, with 66% of traffic moving on CP.

**Hopper Car Rationing**

- CN rationed 1,283 hopper car orders in Week 25 on the heels of rationing 730 orders in the prior week. 90% of rationed orders in Week 25 were for the Prince Rupert corridor.

**Loads Not Moving**

- **The count of cars not moving for 48+ hours gained for the fourth consecutive day, up 13% (+747) overnight, reflecting higher counts on both CN and CP. Idle car counts currently at 6,595, the highest seen in the last 30 days, and 77% above the trailing 30-day average.**
- CN

- **The count of idle cars for 48+ hours increased 11% (+395) overnight and have now increased for the sixth consecutive day - now at 3,837 cars, the highest seen in the last 30 days.**
- The number of cars idle for 4+ days increased 21% (+417) overnight and have now increased for the fourth consecutive day - now at 2,447 cars, the highest seen in the last 30 days.
- The count of cars not moving for 7+ days rose for the fourth consecutive day, up 53% (+446) overnight - now at 1,294 cars, the highest seen in the last 30 days.
- Vancouver represents 81% of all idle cars.
- In total 63% of all idle cars are dwelling at origin locations.
- CP
  - **CP idle car counts for 48+ hours increased 15% (+352) overnight and have now increased for the third consecutive day - now at 2,758 cars, the highest seen in the last 30 days.**
  - The number of cars idle for 4+ days increased significantly by 62% (+297) overnight - now at 778 cars.
  - The number of cars idle for 7+ days gained significantly by 63% (+97) overnight - now at 251 cars.
  - Vancouver accounts for 92% of all idle cars.
  - In total 46% of all idle cars are dwelling at origin locations.

### Port Performance

- CN and CP reported a total of 579 cars unloaded at the three major ports, now 31% below the trailing 30-day average. One day in Week 27 unloads now behind last week's pace by 350 unloads, reflecting reduced unloads at Vancouver offset by higher unloads at Thunder Bay and Prince Rupert.
- Vancouver
  - 215 unloads, the lowest seen in the last 30 days, was reported by CN and CP at the Port of Vancouver; CN - 30 and CP - 185. One day in Week 27 unloads are tracking behind last week's performance by 400 unloads.
  - There are nearly 350 cars on site at Vancouver with 13 cars arriving at the port in the last 24 hours.
  - CN and CP have 2,100 cars in British Columbia en route to Vancouver, with more than 700 cars at Kamloops and west, and 56% of traffic moving on CN.
- Prince Rupert
  - Prince Rupert reported 227 unloads, the highest seen in the last 30 days, now tracking at last week's pace.
  - Loads on wheels remain above 1,000 cars - now at 1,732 cars.
  - There are about 450 cars west of Jasper en route to Prince Rupert.
  - There are more than 400 cars on site at Prince Rupert with 500 cars arriving at the port in the last 24 hours.
- Thunder Bay
  - 137 unloads were reported at Thunder Bay yesterday. One day in Week 27 unloads are tracking ahead of last week's pace by 50 unloads.
  - There are 150 cars on site at Thunder Bay with more than 50 cars arriving at the port in the prior 24 hours.
  - There are more than 150 cars en route to Thunder Bay from Winnipeg and east.

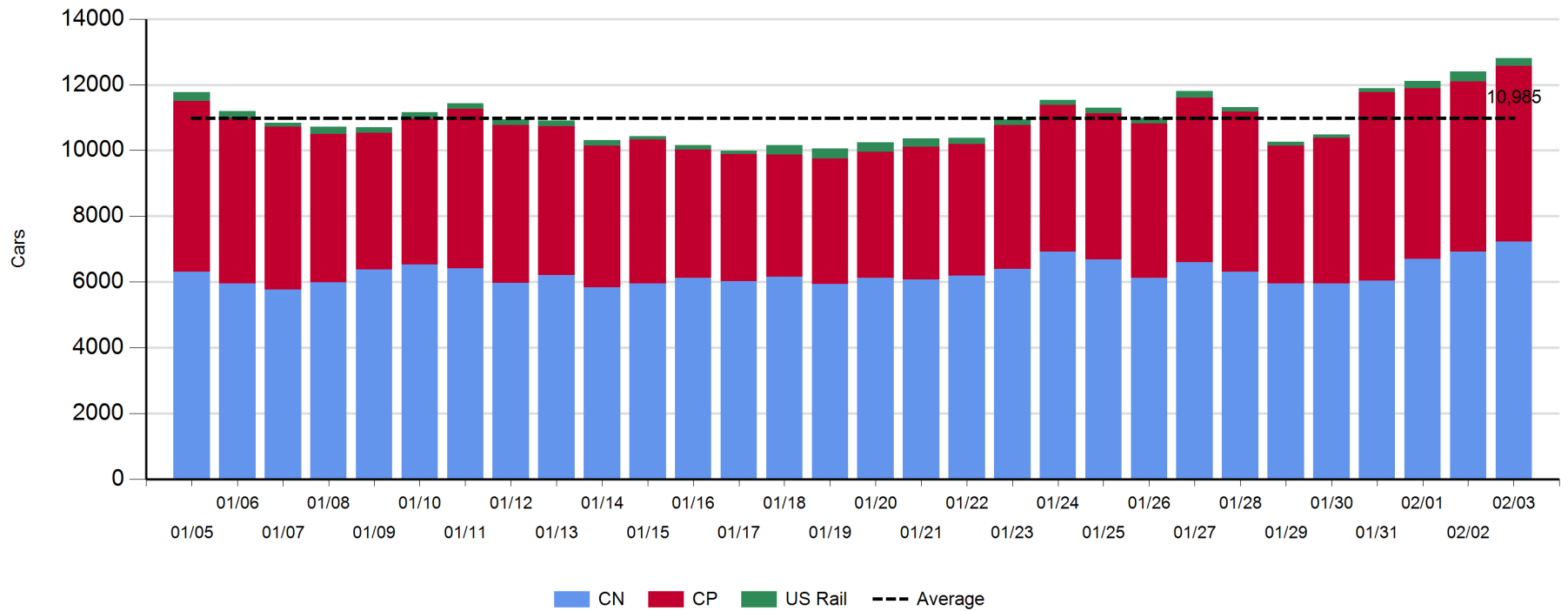
**Daily Loads on Wheels - 2/3/2020**

	E Canada	Prince Rupert	Thunder Bay	USA/MEX	Vancouver	Total
CN	676	1,732	106	245	4,467	7,226
CP	408	1	203	171	4,552	5,335
Short Line	60				8	68
US Rail				183		183
	1,144	1,733	309	599	9,027	12,812

**Change in Loads on Wheels - Prior 24 Hours**

	E Canada	Prince Rupert	Thunder Bay	USA/MEX	Vancouver	Total
CN	-66	-126	0	-8	507	307
CP	50	0	-139	-95	352	168
Short Line	-59				-8	-67
US Rail				3		3
	-75	-126	-139	-100	851	411

**Loads on Wheels - Prior 30 Days**

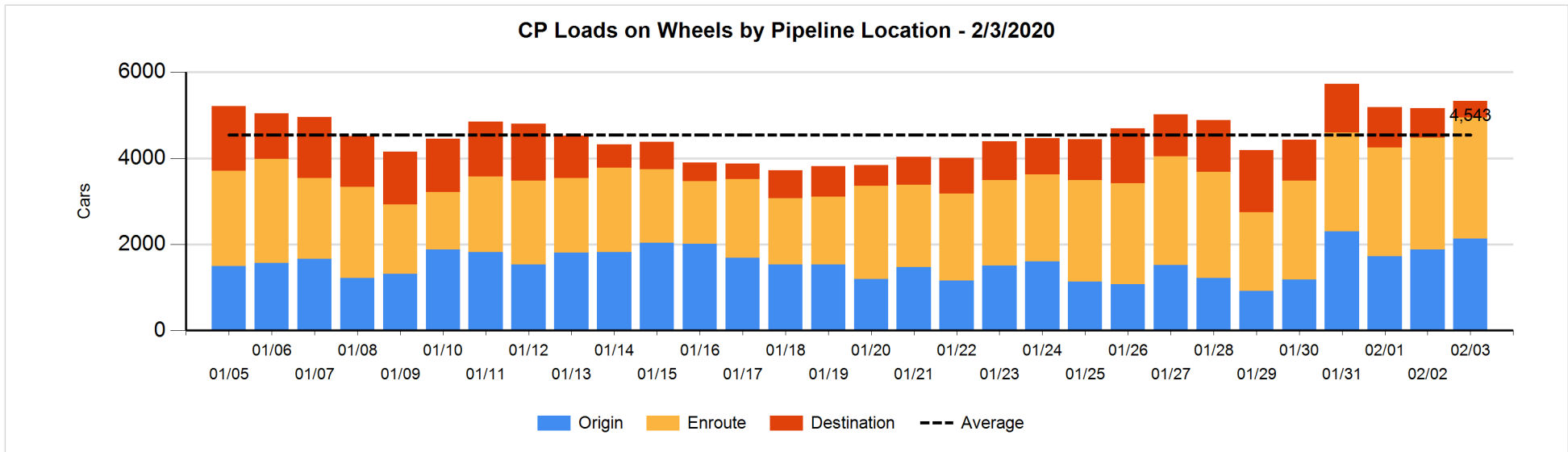
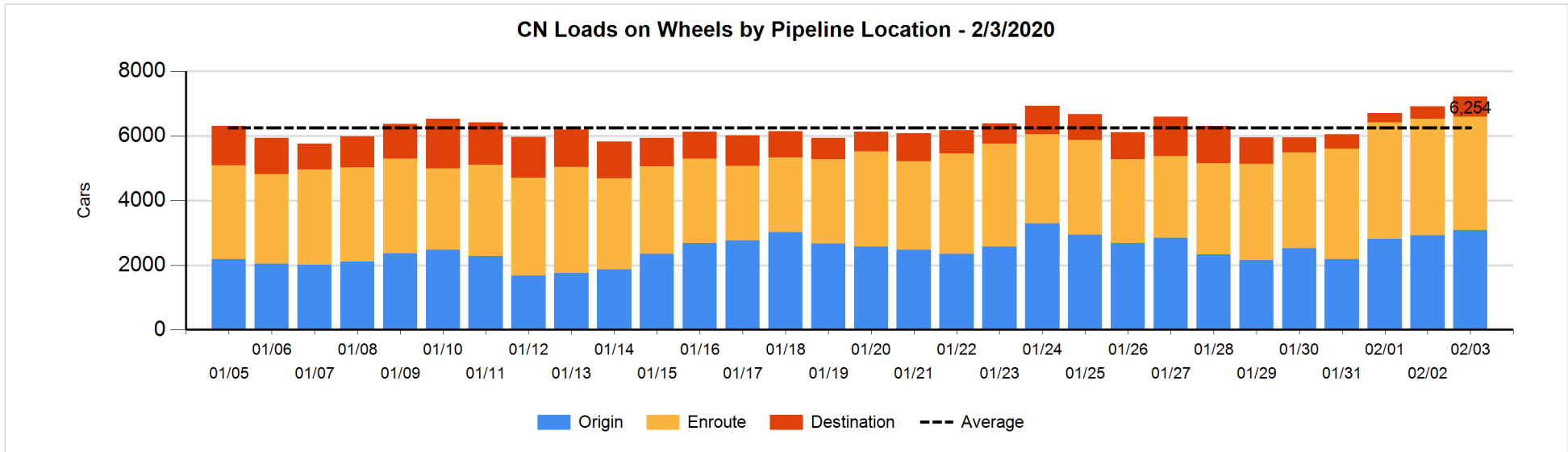


**Daily Loads on Wheels By Pipeline Location - 2/3/2020**

	E Canada	Prince Rupert	Thunder Bay	USA/MEX	Vancouver	Total
CN						
Origin	56	579		9	2,446	3,090
Enroute	504	739	103	228	1,936	3,510
Destination	116	414	3	8	85	626
	676	1,732	106	245	4,467	7,226
CP						
Origin	160			36	1,933	2,129
Enroute	248		62	125	2,381	2,816
Destination		1	141	10	238	390
	408	1	203	171	4,552	5,335
US Rail / Short Line						
Origin						
Enroute	60			167		227
Destination				16	8	24
	60			183	8	251

**Change in Daily Loads on Wheels By Pipeline Location - Prior 24 Hours**

	E Canada	Prince Rupert	Thunder Bay	USA/MEX	Vancouver	Total
CN						
Origin	-48	-101		9	299	159
Enroute	11	-279	0	-15	201	-82
Destination	-29	254	0	-2	7	230
	-66	-126	0	-8	507	307
CP						
Origin	39		-62	-76	346	247
Enroute	11		-4	-3	215	219
Destination		0	-73	-16	-209	-298
	50	0	-139	-95	352	168
US Rail / Short Line						
Origin						
Enroute	-50			113		63
Destination	-9			-110	-8	-127
	-59			3	-8	-64

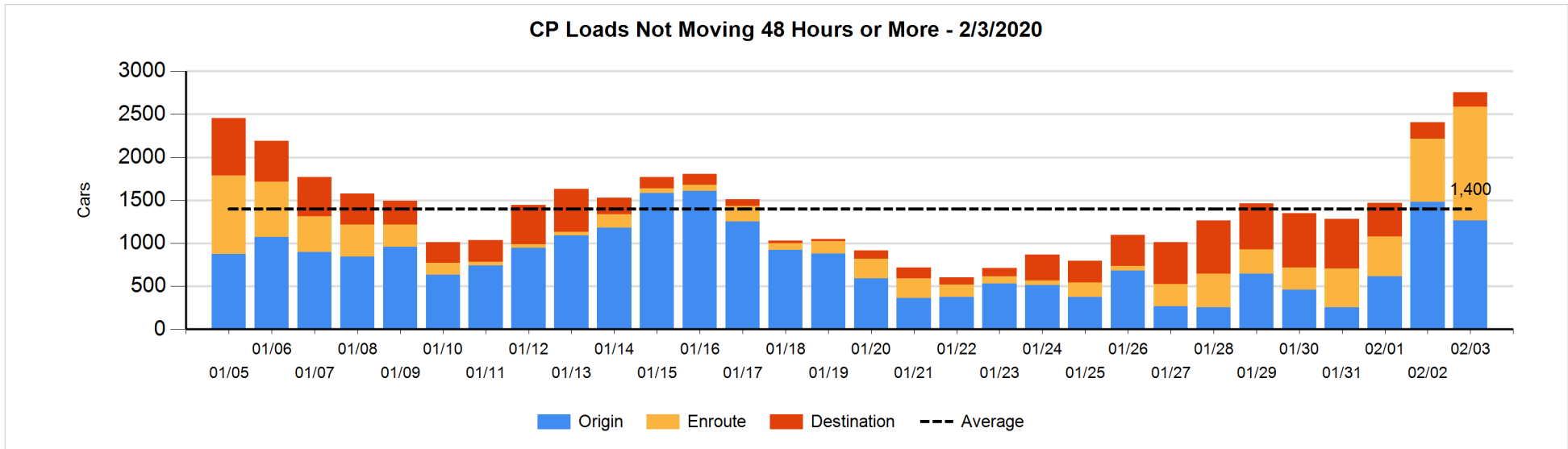
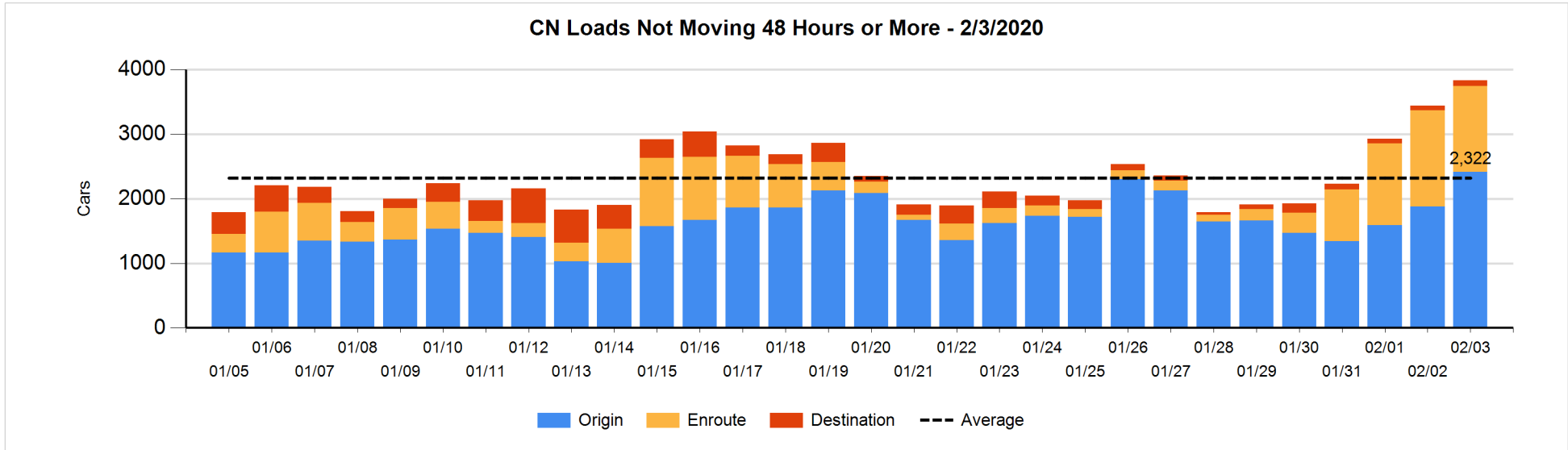


**Loads Not Moving 48 Hours or More - 2/3/2020**

	E Canada	Prince Rupert	Thunder Bay	USA/MEX	Vancouver	Total
CN						
Origin	52	478			1884	2414
Enroute	121	24		9	1177	1331
Destination	39	1	3	6	43	92
	212	503	3	15	3104	3837
CP						
Origin	106			12	1147	1265
Enroute	33			3	1287	1323
Destination		1	65	2	102	170
	139	1	65	17	2536	2758
US Rail / Short Line						
Origin						
Enroute				42		42
Destination				8	7	15
				50	7	57

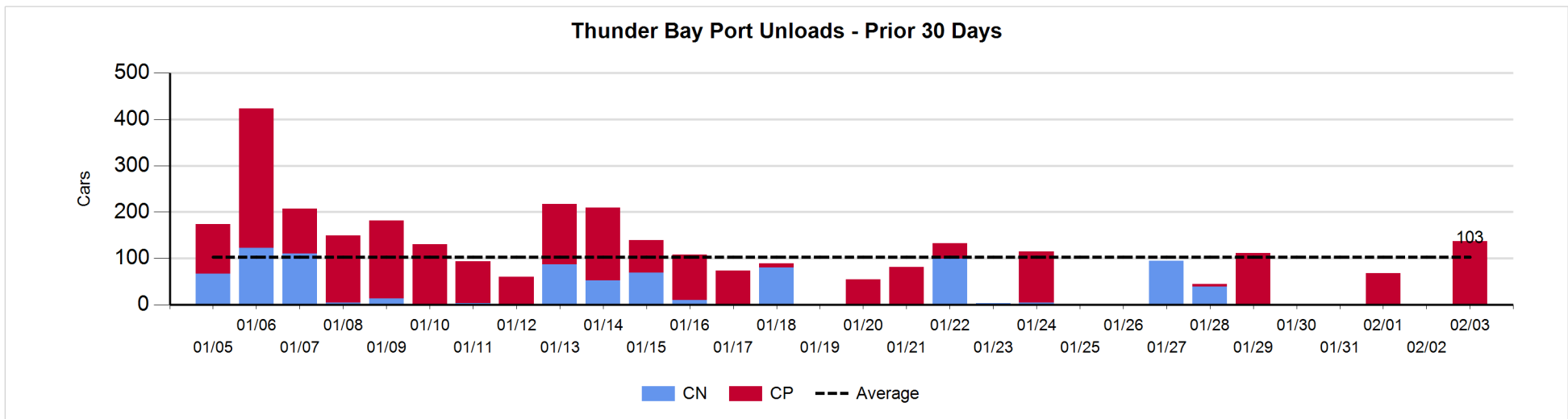
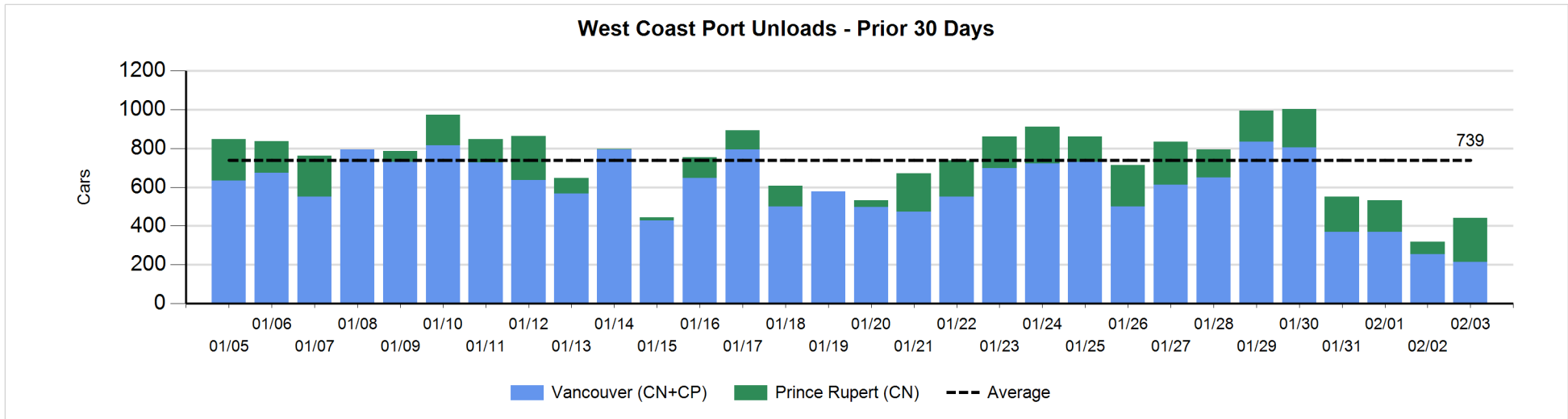
**Change in Loads Not Moving 48 Hours or More - 2/3/2020**

	E Canada	Prince Rupert	Thunder Bay	USA/MEX	Vancouver	Total
CN						
Origin	51	297			187	535
Enroute	1	-33		-1	-123	-156
Destination	-4	-1	1	-3	23	16
	48	263	1	-4	87	395
CP						
Origin	-15		-62	-25	-115	-217
Enroute	31			1	559	591
Destination		0	23	-22	-23	-22
	16	0	-39	-46	421	352
US Rail / Short Line						
Origin						
Enroute				4		4
Destination	-9			-13	4	-18
	-9			-9	4	-14



**Port Unloads - 2/3/2020**

	Prince Rupert	Vancouver	West Coast Total	Thunder Bay	Total
CN	227	30	257		257
CP		185	185	137	322
	227	215	442	137	579





**Port Terminal Status**

**Vancouver**

Daily Activity for 2/3/2020

	Cars Arrived	Cars Received in Interchange	Cars Delivered in Interchange	Cars Placed for Unloading	Loads on Wheels at Destination As of 2/3/2020	
CN			9	1	41	85
CP	12	1		11	2	239
SRY	1	2			9	8

**Port Unloads**

	02/03	02/02	Week To Date	Last Week
CN	30	5	30	1,678
CP	185	248	185	2,215
SRY	9	4	9	59

**Age Profile of Loaded Cars Waiting Placement for Unloading**

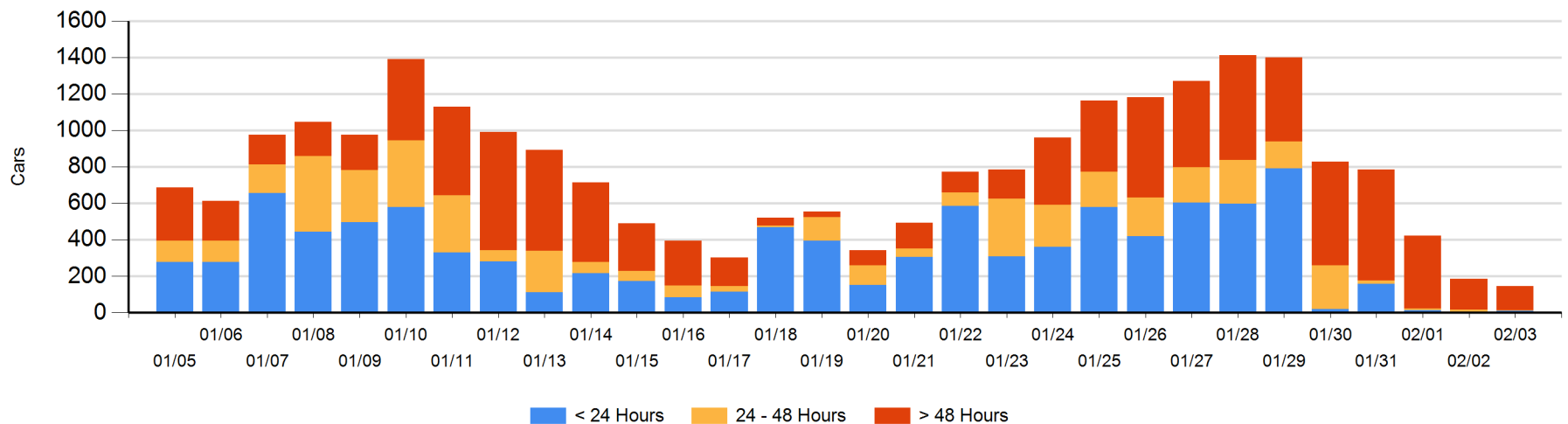
**Today**

	< 24 Hrs	24 - 48 Hrs	> 48-72 Hrs	> 72 Hrs	Total On Hand
CN				18	18
CP	12	1	13	101	127
SRY					0

**Change in Last 24 Hours**

	< 24 Hrs	24-48 Hrs	48 - 72 Hrs	> 72 Hrs
CN	-4		-2	-2
CP	11	-12	8	-40
SRY				

**Loaded Cars on Hand Vancouver Waiting for Placement - Last 30 Days All Railways**



**Port Terminal Status**

**Prince Rupert**

Daily Activity for 2/3/2020

	Cars Arrived	Cars Received in Interchange	Cars Delivered in Interchange	Cars Placed for Unloading	Loads on Wheels at Destination As of 2/3/2020
CN	491			303	414

**Port Unloads**

	02/03	02/02	Week To Date	Last Week
CN	227	64	227	1,135

**Age Profile of Loaded Cars Waiting Placement for Unloading**

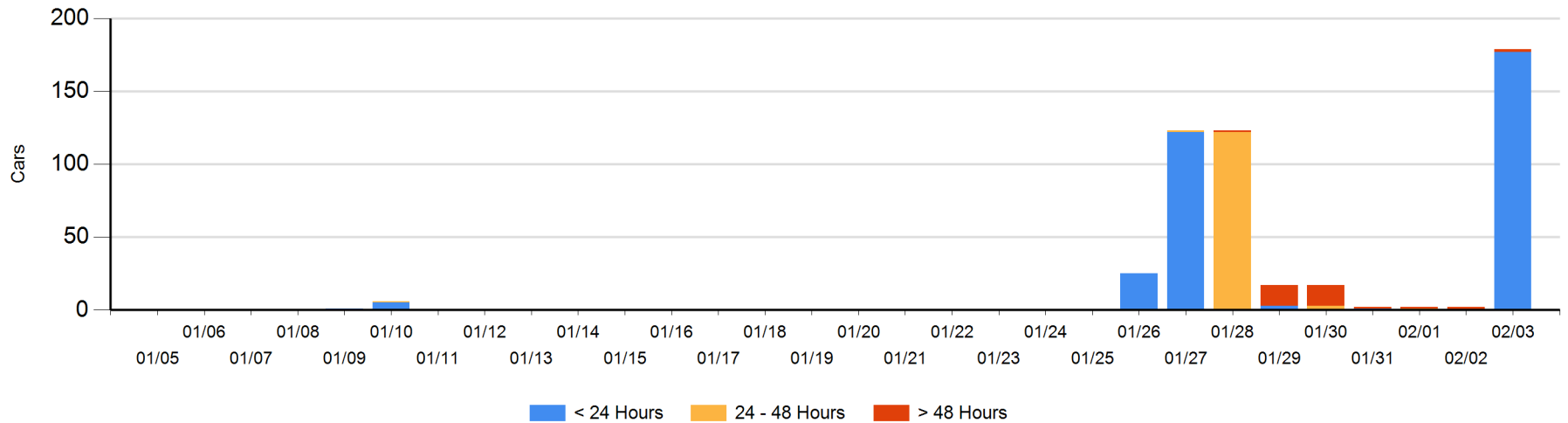
**Today**

	< 24 Hrs	24 - 48 Hrs	> 48-72 Hrs	> 72 Hrs	Total On Hand
CN	177			2	179

**Change in Last 24 Hours**

	< 24 Hrs	24-48 Hrs	48 - 72 Hrs	> 72 Hrs
CN	177		-1	1

Loaded Cars on Hand Prince Rupert Waiting for Placement - Last 30 Days All Railways



**Port Terminal Status**

**Thunder Bay**

Daily Activity for 2/3/2020

	Cars Arrived	Cars Received in Interchange	Cars Delivered in Interchange	Cars Placed for Unloading	Loads on Wheels at Destination As of 2/3/2020
CN					3
CP	66			48	141

**Port Unloads**

	02/03	02/02	Week To Date	Last Week
CN		1		135
CP	137		137	186

**Age Profile of Loaded Cars Waiting Placement for Unloading**

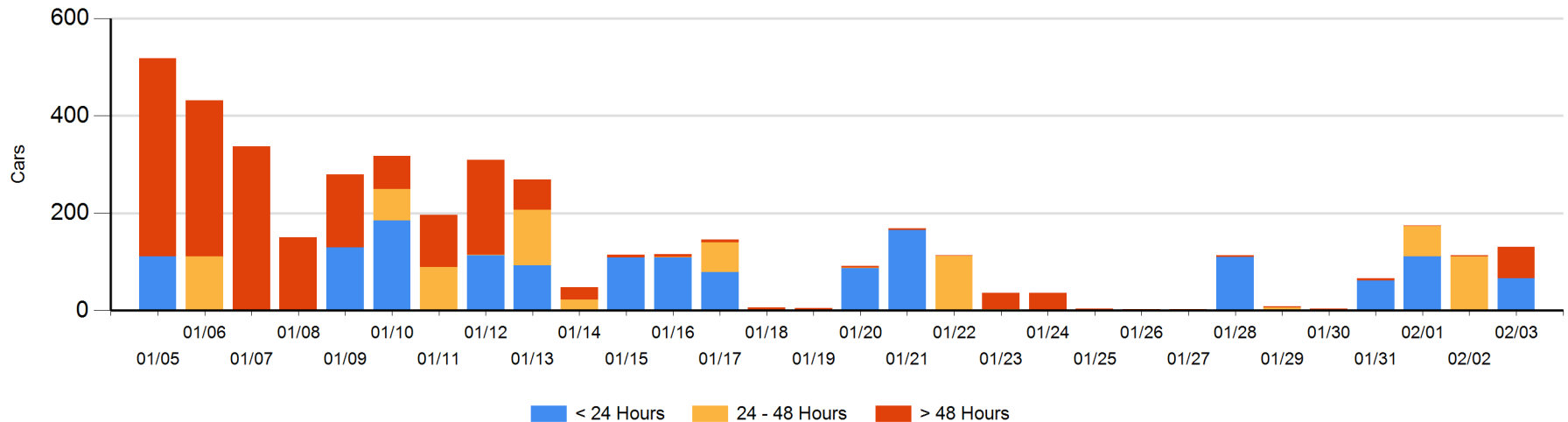
**Today**

	< 24 Hrs	24 - 48 Hrs	> 48-72 Hrs	> 72 Hrs	Total On Hand
CN			1		1
CP	66		62	2	130

**Change in Last 24 Hours**

	< 24 Hrs	24-48 Hrs	48 - 72 Hrs	> 72 Hrs
CN		-1	1	
CP	66	-110	62	0

**Loaded Cars on Hand Thunder Bay Waiting for Placement - Last 30 Days All Railways**



## Measurement Definitions

Loads on Wheels	<p>Count of loaded rail cars including all rail cars that have been released loaded at origin and have not been reported by the railway as unloaded at destination.</p> <p>Counts include all rail cars (hopper cars and boxcars) moving within a pipeline.</p>
Loads Not Moving	<p>Loaded rail cars for which the railways have not reported a movement event for 48 hours or more whether the rail car is at origin, enroute or at destination.</p>
Port Unloads	<p>Count of rail cars reported by railways as unloaded at the western port destinations of Vancouver, Prince Rupert and Thunder Bay.</p> <p>Unload counts include all rail cars (hopper cars and boxcars) unloaded by all receivers including major port terminals, transloaders and other receivers.</p>
Cars Arrived	<p>Count of rail cars reported as arrived at the destination railway terminal.</p>
Cars Received in Interchange	<p>Count of rail cars received in interchange by each railway within a destination railway terminal. Interchange activity is tracked for the Vancouver and Thunder Bay pipelines as applicable.</p>
Cars Delivered in Interchange	<p>Count of rail cars delivered in interchange by each railway within a destination railway terminal. Interchange activity is tracked for the Vancouver and Thunder Bay pipelines as applicable.</p>
Cars Placed for Unloading	<p>Count of rail cars reported by the railways as placed loaded at the receiver's facility for unloading.</p>
Loads on Wheels at Destination	<p>Count of rail cars that remain under load within the destination railway terminal including rail cars that have been reported as placed for unloading but not yet reported as unloaded.</p>
Waiting Placement for Unloading	<p>Count of rail cars that have been reported as arrived at the destination railway terminal but not reported as placed for unloading by the railway.</p> <p>For the Ports of Vancouver, Prince Rupert and Thunder Bay the count of rail cars waiting placement for unloading is categorized by age – i.e. the elapsed time from arrival at destination to the current report date.</p>