

## SPEED READ

- Loads on wheels fell overnight, reflecting a decline in both CN and CP volumes. On a net basis, volumes decreased due to lower traffic across all corridors.
- Network fluidity improved overnight, led by a decline in idle car counts on CN by 19% (-797) offset by an increase in idle car counts on CP by 1% (+24). The total count of cars for 4+ days on both railways fell 14% (-594) overnight - now at 3,786 cars.
- Four days in Week 27 unloads now behind prior week's performance by 1,250 unloads, reflecting lower unloads at Vancouver offset by improved week over week performance at Thunder Bay and Prince Rupert.

=====

## Loads on Wheels

- Loads on wheels fell 5% (-654) overnight, due to lower traffic on both CN and CP - combined total at 11,951 and 8% above the trailing 30-day average.
- On a net basis, the decline in loads on wheels indicates lower traffic across all corridors.
- CN volumes fell 5% (-364) overnight, with reduced volumes across all corridors other than USA/MEX. System wide CN loads on wheels currently at 6,803 and 7% above the trailing 30-day average.
- CP volumes fell 5% (-286) overnight, driven by a decline in traffic across all corridors. CP system wide loads on wheels presently at 4,920 and 8% above the trailing 30-day average.
- Vancouver currently at 8,898, fell 4% (-337) overnight, now 28% above the trailing 30-day average.
- The Prince Rupert pipeline now at 1,263, the lowest seen in the last 30 days, declined 10% (-148) overnight and have now decreased for the fourth consecutive day, and 34% below the trailing 30-day average.
- Thunder Bay volumes declined 23% (-50) overnight - presently at 172, the lowest seen in the last 30 days, and 56% below the trailing 30-day average, with 37% of traffic moving on CP.

## Hopper Car Rationing

- Preliminary reporting indicates that CN rationed more than 1,000 hopper car orders in week 26 on the heels of nearly 2,100 hopper car order cancellations in the prior two weeks.

## Loads Not Moving

- **The count of cars not moving for 48+ hours fell 12% (-773) overnight, marking reduced counts on CN offset by higher counts on CP. Idle car counts presently at 5,696 and 46% above the trailing 30-day average.**
- CN
  - **The count of idle cars for 48+ hours fell 19% (-797) overnight - currently at 3,492 cars.**
  - The number of cars idle for 4+ days fell 22% (-699) overnight - currently at 2,409 cars.
  - The count of cars not moving for 7+ days fell 18% (-318) overnight - currently at 1,412 cars.
  - Vancouver represents 79% of all idle cars.
  - In total 73% of all idle cars are dwelling at origin locations.
- CP
  - **CP idle car counts for 48+ hours gained marginally by 1% (+24) overnight - currently at 2,204 cars.**
  - The number of cars idle for 4+ days increased 8% (+105) overnight - presently at 1,377 cars.
  - The number of cars idle for 7+ days increased 75% (+159) overnight - presently at 370 cars.

- Vancouver accounts for 100% of all idle cars.
- In total 73% of all idle cars are dwelling at origin locations.

### **Port Performance**

- CN and CP reported a total of 980 cars unloaded at the three major ports, 22% above the trailing 30-day average. Four days in Week 27 unloads now behind last week's pace by 1,250 unloads, reflecting lower unloads at Vancouver offset by higher unloads at Thunder Bay and Prince Rupert.
- Vancouver
  - 782 unloads reported by CN and CP at the Port of Vancouver; CN - 349 and CP - 433; the highest level of unloads in the last 7 days. Four days in Week 27 unloads are tracking behind last week's performance by more than 1,450 unloads.
  - There are around 400 cars on site at Vancouver with more than 600 cars arriving at the port in the last 24 hours.
  - CN and CP have more than 2,000 cars in British Columbia en route to Vancouver, with more than 700 cars at Kamloops and west, and 66% of traffic moving on CP.
- Prince Rupert
  - Prince Rupert reported 148 unloads, now ahead of last week's unloads after four days by 100 unloads.
  - Loads on wheels remain above 1,000 cars - currently at 1,262 cars.
  - There are more than 450 cars west of Jasper en route to Prince Rupert.
  - There are more than 150 cars on site at Prince Rupert with nearly 100 cars arriving at the port in the last 24 hours.
- Thunder Bay
  - 50 unloads were reported at Thunder Bay yesterday. Four days in Week 27 unloads are tracking ahead of last week's pace by more than 100 unloads.
  - There are more than 50 cars on site at Thunder Bay with 3 cars arriving at the port in the prior 24 hours.
  - There are 100 cars en route to Thunder Bay from Winnipeg and east.

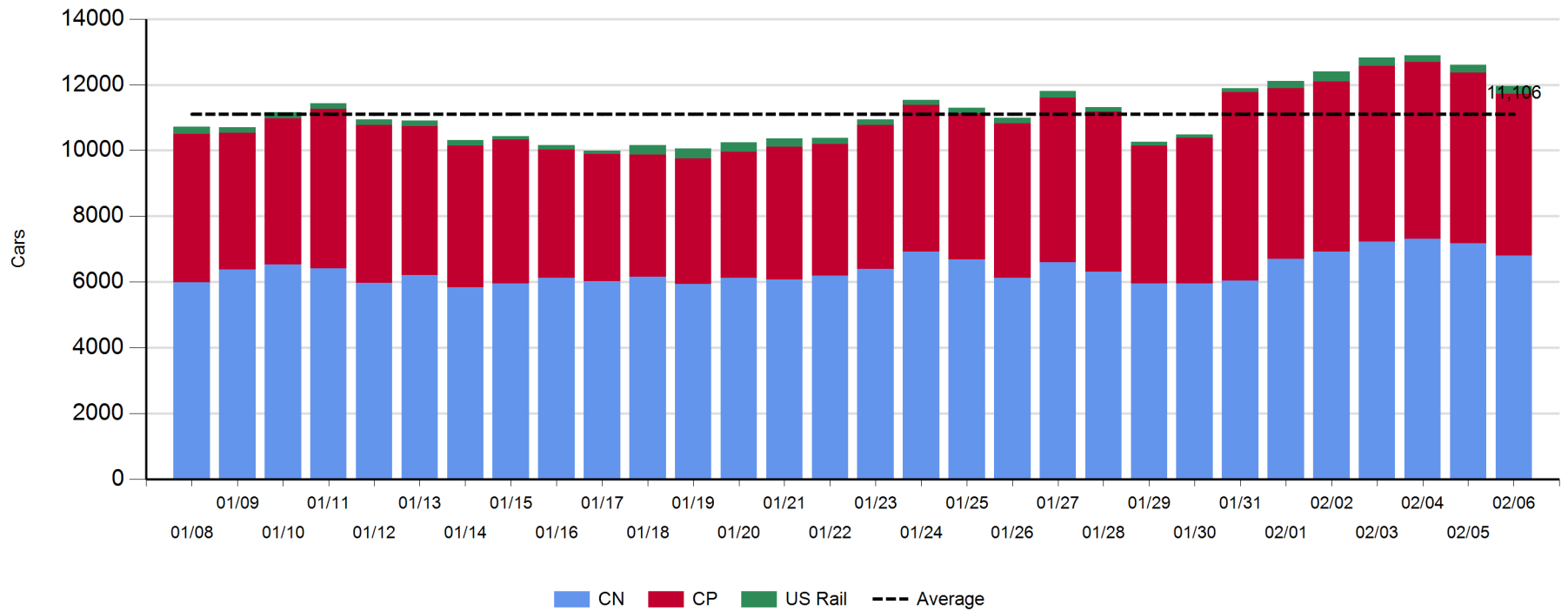
**Daily Loads on Wheels - 2/6/2020**

	E Canada	Prince Rupert	Thunder Bay	USA/MEX	Vancouver	Total
CN	488	1,262	109	279	4,665	6,803
CP	434	1	63	193	4,229	4,920
Short Line	40				4	44
US Rail				184		184
	962	1,263	172	656	8,898	11,951

**Change in Loads on Wheels - Prior 24 Hours**

	E Canada	Prince Rupert	Thunder Bay	USA/MEX	Vancouver	Total
CN	-90	-148	-27	15	-114	-364
CP	-20	0	-23	-25	-218	-286
Short Line	25				-5	20
US Rail				-24		-24
	-85	-148	-50	-34	-337	-654

**Loads on Wheels - Prior 30 Days**

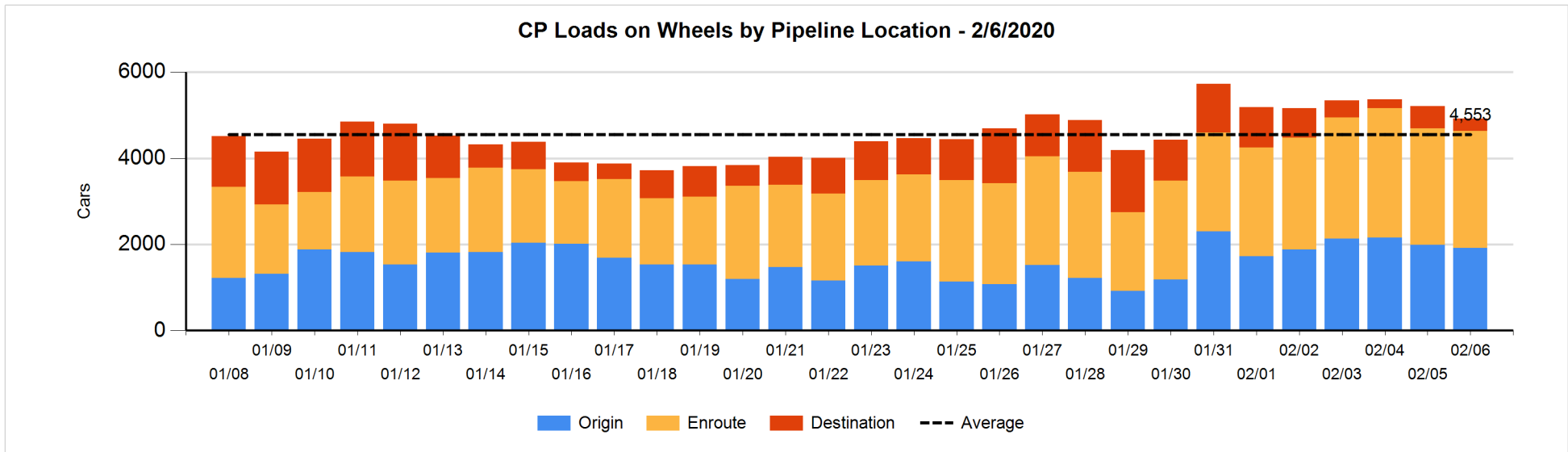
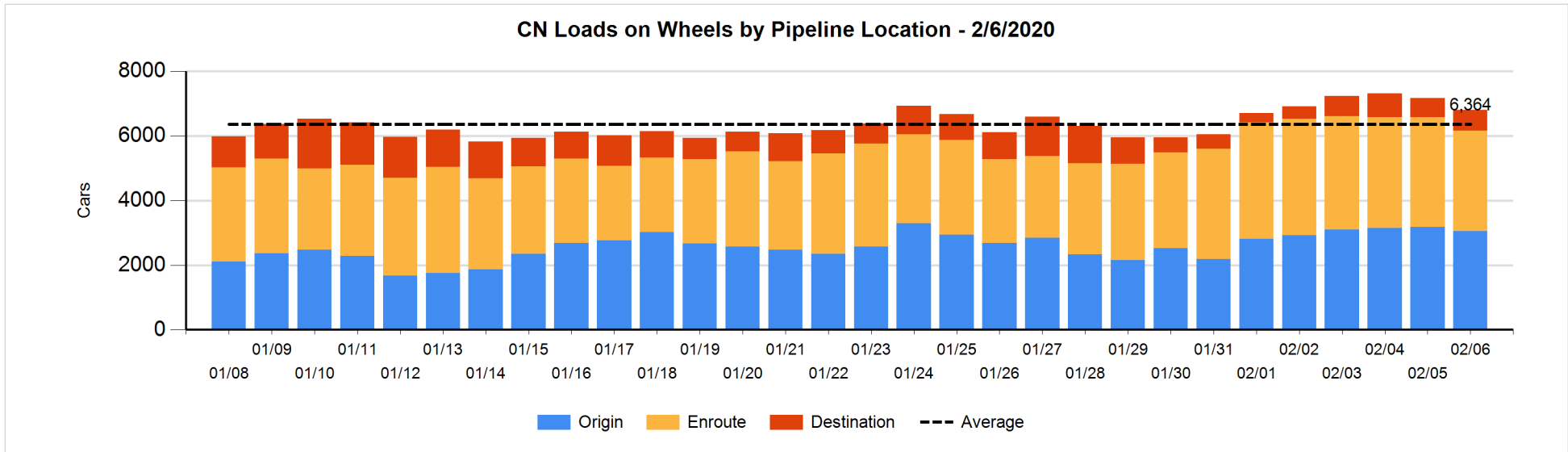


**Daily Loads on Wheels By Pipeline Location - 2/6/2020**

	E Canada	Prince Rupert	Thunder Bay	USA/MEX	Vancouver	Total
CN						
Origin	49	410		82	2,506	3,047
Enroute	363	673	100	114	1,871	3,121
Destination	76	179	9	83	288	635
	488	1,262	109	279	4,665	6,803
CP						
Origin	62			4	1,856	1,922
Enroute	369			63	2,284	2,716
Destination	3	1	63	126	89	282
	434	1	63	193	4,229	4,920
US Rail / Short Line						
Origin						
Enroute	24			170		194
Destination	16			14	4	34
	40			184	4	228

**Change in Daily Loads on Wheels By Pipeline Location - Prior 24 Hours**

	E Canada	Prince Rupert	Thunder Bay	USA/MEX	Vancouver	Total
CN						
Origin	35	0		-10	-157	-132
Enroute	-166	-81	-2	-48	20	-277
Destination	41	-67	-25	73	23	45
	-90	-148	-27	15	-114	-364
CP						
Origin	-56			1	-17	-72
Enroute	36			-102	81	15
Destination	0	0	-23	76	-282	-229
	-20	0	-23	-25	-218	-286
US Rail / Short Line						
Origin						
Enroute	21			-10		11
Destination	4			-14	-5	-15
	25			-24	-5	-4

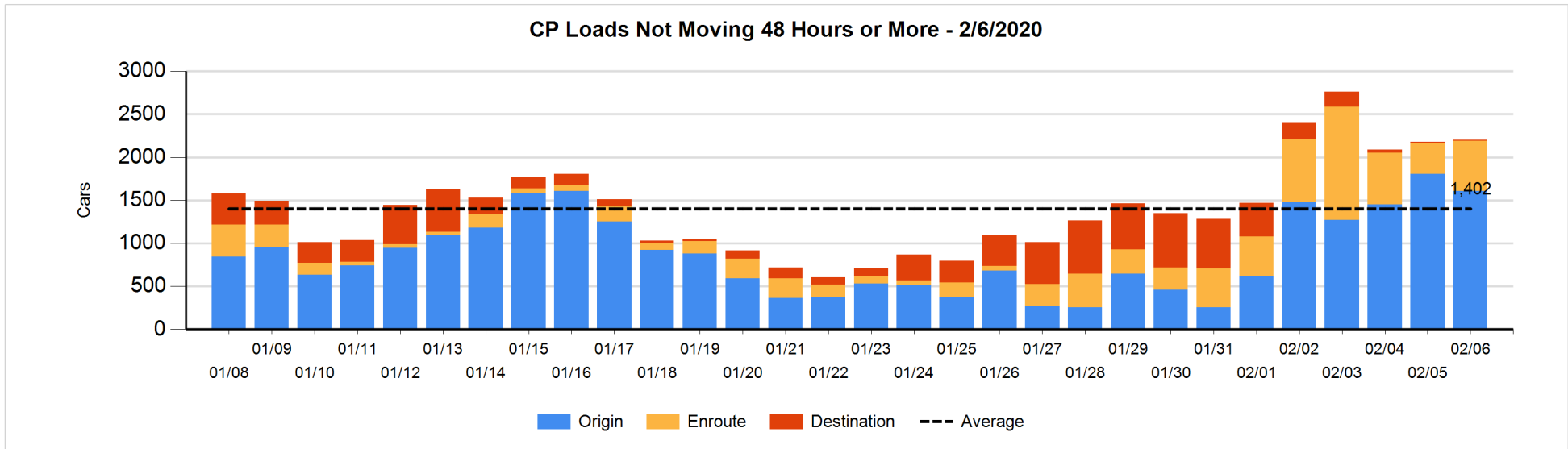
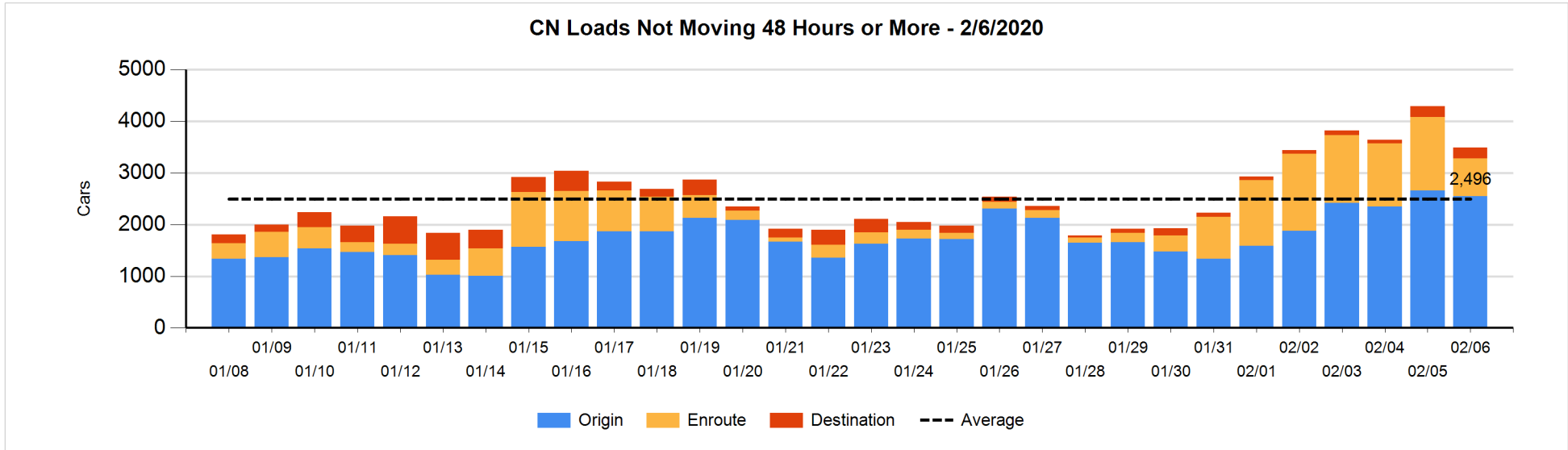


**Loads Not Moving 48 Hours or More - 2/6/2020**

	E Canada	Prince Rupert	Thunder Bay	USA/MEX	Vancouver	Total
<b>CN</b>						
Origin	2	308		55	2183	2548
Enroute	108	41		20	566	735
Destination	2	178	6	2	21	209
	112	527	6	77	2770	3492
<b>CP</b>						
Origin	2			1	1607	1610
Enroute	2				578	580
Destination	2	1	1		10	14
	6	1	1	1	2195	2204
<b>US Rail / Short Line</b>						
Origin						
Enroute				96		96
Destination				2	3	5
				98	3	101

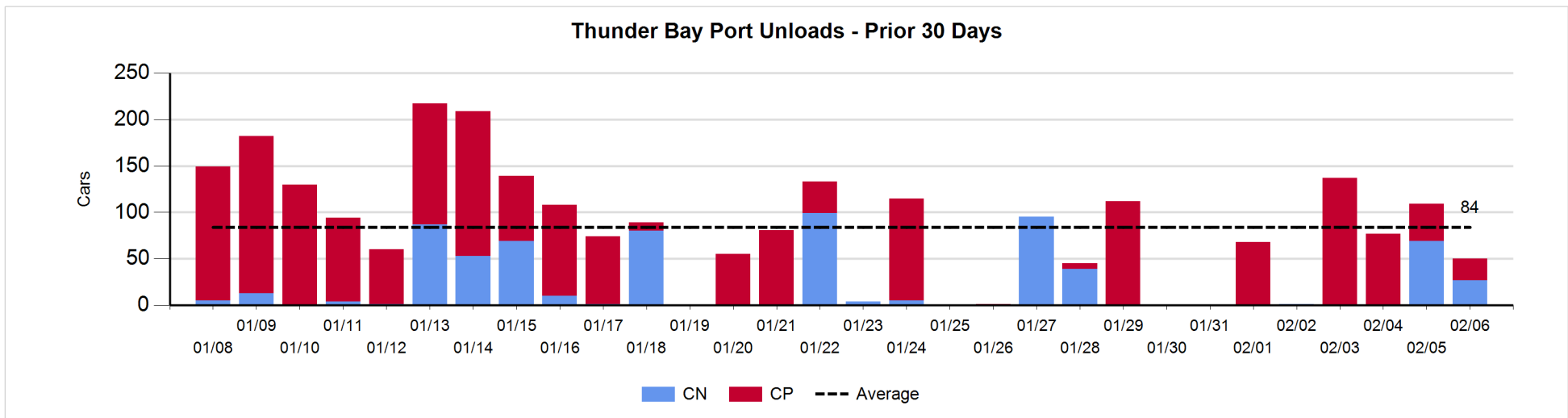
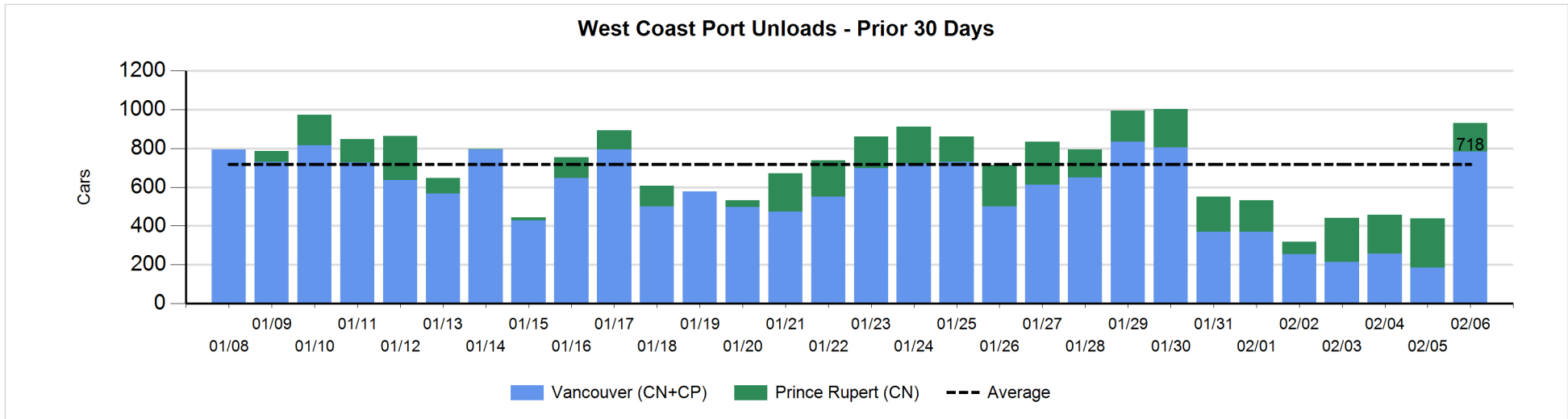
**Change in Loads Not Moving 48 Hours or More - 2/6/2020**

	E Canada	Prince Rupert	Thunder Bay	USA/MEX	Vancouver	Total
<b>CN</b>						
Origin	0	0		49	-157	-108
Enroute	-45	25		3	-669	-686
Destination	-5	0	3	-2	1	-3
	-50	25	3	50	-825	-797
<b>CP</b>						
Origin	-3			0	-194	-197
Enroute	-14			-2	234	218
Destination	2	0	-1		2	3
	-15	0	-1	-2	42	24
<b>US Rail / Short Line</b>						
Origin						
Enroute				58		58
Destination				0	0	0
				58	0	58



**Port Unloads - 2/6/2020**

	Prince Rupert	Vancouver	West Coast Total	Thunder Bay	Total
CN	148	349	497	27	524
CP		433	433	23	456
	148	782	930	50	980





## Port Terminal Status

### Vancouver

Daily Activity for 2/6/2020

	Cars Arrived	Cars Received in Interchange	Cars Delivered in Interchange	Cars Placed for Unloading	Loads on Wheels at Destination As of 2/6/2020
CN	449	2	17	255	288
CP	166	17	10	216	90
SRY		8		7	4

### Port Unloads

	02/06	02/05	Week To Date	Last Week
CN	349	26	542	1,678
CP	433	158	896	2,215
SRY	7	7	25	59

## Age Profile of Loaded Cars Waiting Placement for Unloading

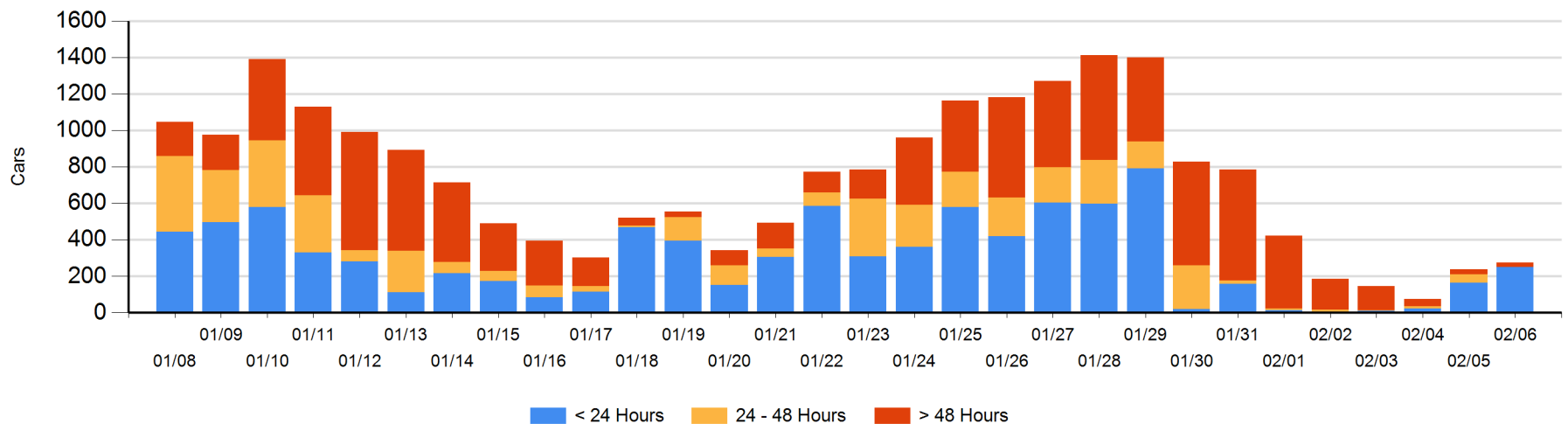
### Today

	< 24 Hrs	24 - 48 Hrs	> 48-72 Hrs	> 72 Hrs	Total On Hand
CN	223			3	226
CP	28		17	4	49
SRY					0

### Change in Last 24 Hours

	< 24 Hrs	24-48 Hrs	48 - 72 Hrs	> 72 Hrs
CN	112			-1
CP	-26	-46	5	-7
SRY				

Loaded Cars on Hand Vancouver Waiting for Placement - Last 30 Days All Railways



**Port Terminal Status**

**Prince Rupert**

Daily Activity for 2/6/2020

	Cars Arrived	Cars Received in Interchange	Cars Delivered in Interchange	Cars Placed for Unloading	Loads on Wheels at Destination As of 2/6/2020
CN	80			79	179

**Port Unloads**

	02/06	02/05	Week To Date	Last Week
CN	148	254	828	1,135

**Age Profile of Loaded Cars Waiting Placement for Unloading**

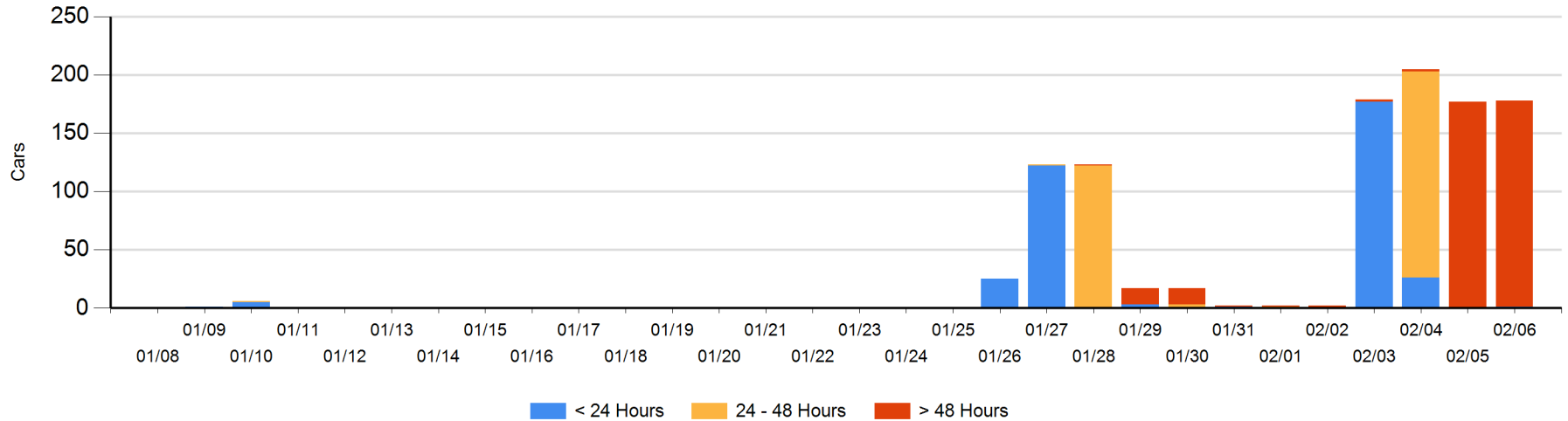
**Today**

	< 24 Hrs	24 - 48 Hrs	> 48-72 Hrs	> 72 Hrs	Total On Hand
CN	1			177	178

**Change in Last 24 Hours**

	< 24 Hrs	24-48 Hrs	48 - 72 Hrs	> 72 Hrs
CN	1		-177	177

Loaded Cars on Hand Prince Rupert Waiting for Placement - Last 30 Days All Railways



**Port Terminal Status**

**Thunder Bay**

Daily Activity for 2/6/2020

	Cars Arrived	Cars Received in Interchange	Cars Delivered in Interchange	Cars Placed for Unloading	Loads on Wheels at Destination As of 2/6/2020
CN	3			14	9
CP				62	63

**Port Unloads**

	02/06	02/05	Week To Date	Last Week
CN	27	69	96	135
CP	23	40	277	186

**Age Profile of Loaded Cars Waiting Placement for Unloading**

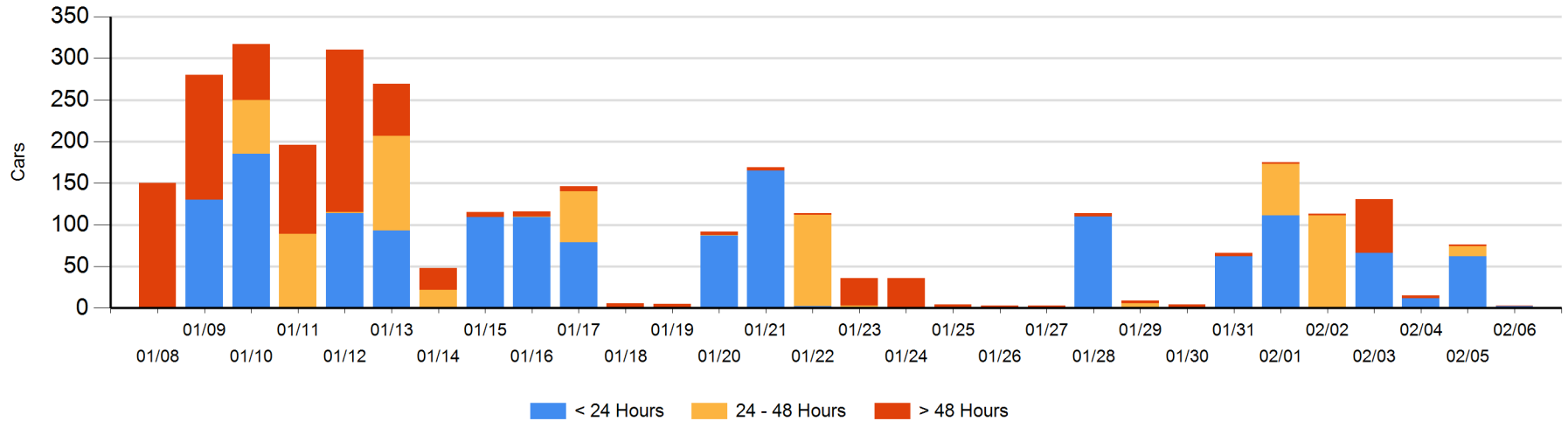
**Today**

	< 24 Hrs	24 - 48 Hrs	> 48-72 Hrs	> 72 Hrs	Total On Hand
CN	2				2
CP				1	1

**Change in Last 24 Hours**

	< 24 Hrs	24-48 Hrs	48 - 72 Hrs	> 72 Hrs
CN	2	-12		-1
CP	-62			0

**Loaded Cars on Hand Thunder Bay Waiting for Placement - Last 30 Days All Railways**



## Measurement Definitions

Loads on Wheels	<p>Count of loaded rail cars including all rail cars that have been released loaded at origin and have not been reported by the railway as unloaded at destination.</p> <p>Counts include all rail cars (hopper cars and boxcars) moving within a pipeline.</p>
Loads Not Moving	<p>Loaded rail cars for which the railways have not reported a movement event for 48 hours or more whether the rail car is at origin, enroute or at destination.</p>
Port Unloads	<p>Count of rail cars reported by railways as unloaded at the western port destinations of Vancouver, Prince Rupert and Thunder Bay.</p> <p>Unload counts include all rail cars (hopper cars and boxcars) unloaded by all receivers including major port terminals, transloaders and other receivers.</p>
Cars Arrived	<p>Count of rail cars reported as arrived at the destination railway terminal.</p>
Cars Received in Interchange	<p>Count of rail cars received in interchange by each railway within a destination railway terminal. Interchange activity is tracked for the Vancouver and Thunder Bay pipelines as applicable.</p>
Cars Delivered in Interchange	<p>Count of rail cars delivered in interchange by each railway within a destination railway terminal. Interchange activity is tracked for the Vancouver and Thunder Bay pipelines as applicable.</p>
Cars Placed for Unloading	<p>Count of rail cars reported by the railways as placed loaded at the receiver's facility for unloading.</p>
Loads on Wheels at Destination	<p>Count of rail cars that remain under load within the destination railway terminal including rail cars that have been reported as placed for unloading but not yet reported as unloaded.</p>
Waiting Placement for Unloading	<p>Count of rail cars that have been reported as arrived at the destination railway terminal but not reported as placed for unloading by the railway.</p> <p>For the Ports of Vancouver, Prince Rupert and Thunder Bay the count of rail cars waiting placement for unloading is categorized by age – i.e. the elapsed time from arrival at destination to the current report date.</p>