

## SPEED READ

- Loads on wheels decreased overnight, marking a decline in both CN and CP volumes. On a net basis, volumes decreased due to lower volumes across all corridors other than Thunder Bay and Prince Rupert.
- Network fluidity deteriorated overnight, led by a rise in idle car counts on CN by 22% (+563) offset by a decline in idle car counts on CP by 15% (-230). The total count of cars for 4+ days on both railways increased 3% (+96) overnight - presently at 3,015 cars.
- The count of cars not moving for 48 hours or more remains above the 4,000 car mark for the 12th consecutive day. CN currently accounts for 70% of this total.
- The Eastern Canada and Prince Rupert corridors represent 50% of all idle cars on CN with Vancouver accounting for the balance. Ongoing blockades are the principal drivers of growing counts in the E. Canada and Prince Rupert corridors.
- Three days in Week 28 unloads now ahead of prior week's performance by 800 unloads, marking improved week over week performance at Vancouver offset by lower unloads at Prince Rupert and Thunder Bay.
- Prince Rupert is effectively out of cars for unloading with currently no loads positioned west of the blockade at New Hazelton on CN lines.

---

## Loads on Wheels

- Loads on wheels decreased 5% (-548) overnight, due to lower traffic on both CN and CP - combined total at 11,107 and 1% below the trailing 30-day average.
- On a net basis, the decline in loads on wheels reflects lower volumes across all corridors other than Thunder Bay and Prince Rupert.
- CN volumes fell marginally by 1% (-100) overnight, with lower volumes across all corridors other than Thunder Bay and Prince Rupert. System wide CN loads on wheels presently at 6,594 and 2% above the trailing 30-day average.
- CP volumes fell 10% (-456) overnight, driven by a decline in volumes across all corridors - most notably Vancouver. CP system wide loads on wheels presently at 4,327 and 5% below the trailing 30-day average.
- Vancouver presently at 7,543, decreased 6% (-454) overnight, now 4% above the trailing 30-day average.
- The Prince Rupert pipeline presently at 1,501, was unchanged overnight, and 17% below the trailing 30-day average.
- Thunder Bay volumes increased (+82) overnight - presently at 142 and 50% below the trailing 30-day average, with 100% of traffic moving on CN.

## Hopper Car Rationing

- Early reporting indicates that CN has rationed more than 1,200 hopper car orders in week 27 on the heels of rationing nearly 3,400 orders in the preceding three weeks. Early indications are that rationing is continuing into week 28.

## Loads Not Moving

- **The count of cars not moving for 48+ hours gained 8% (+333) overnight, marking higher counts on CN offset by reduced counts on CP. Idle car counts presently at 4,486 and 7% above the trailing 30-day average.**
- CN
  - **The count of idle cars for 48+ hours increased 22% (+563) overnight - presently at 3,132 cars.**
  - The number of cars idle for 4+ days increased 10% (+182) overnight - now at 2,071 cars.
  - The count of cars not moving for 7+ days increased for the third consecutive day, up 5% (+76) overnight - now at 1,533 cars.
  - Vancouver represents 52% of all idle cars.
  - In total 69% of all idle cars are dwelling at origin locations.

- CP
  - **CP idle car counts for 48+ hours fell 15% (-230) overnight and have now decreased for the fifth consecutive day - presently at 1,354 cars.**
  - The number of cars idle for 4+ days decreased for the fourth consecutive day, down 8% (-86) overnight - presently at 944 cars.
  - The number of cars idle for 7+ days fell 18% (-114) overnight - presently at 513 cars.
  - Vancouver accounts for 84% of all idle cars.
  - In total 82% of all idle cars are dwelling at origin locations.

### Port Performance

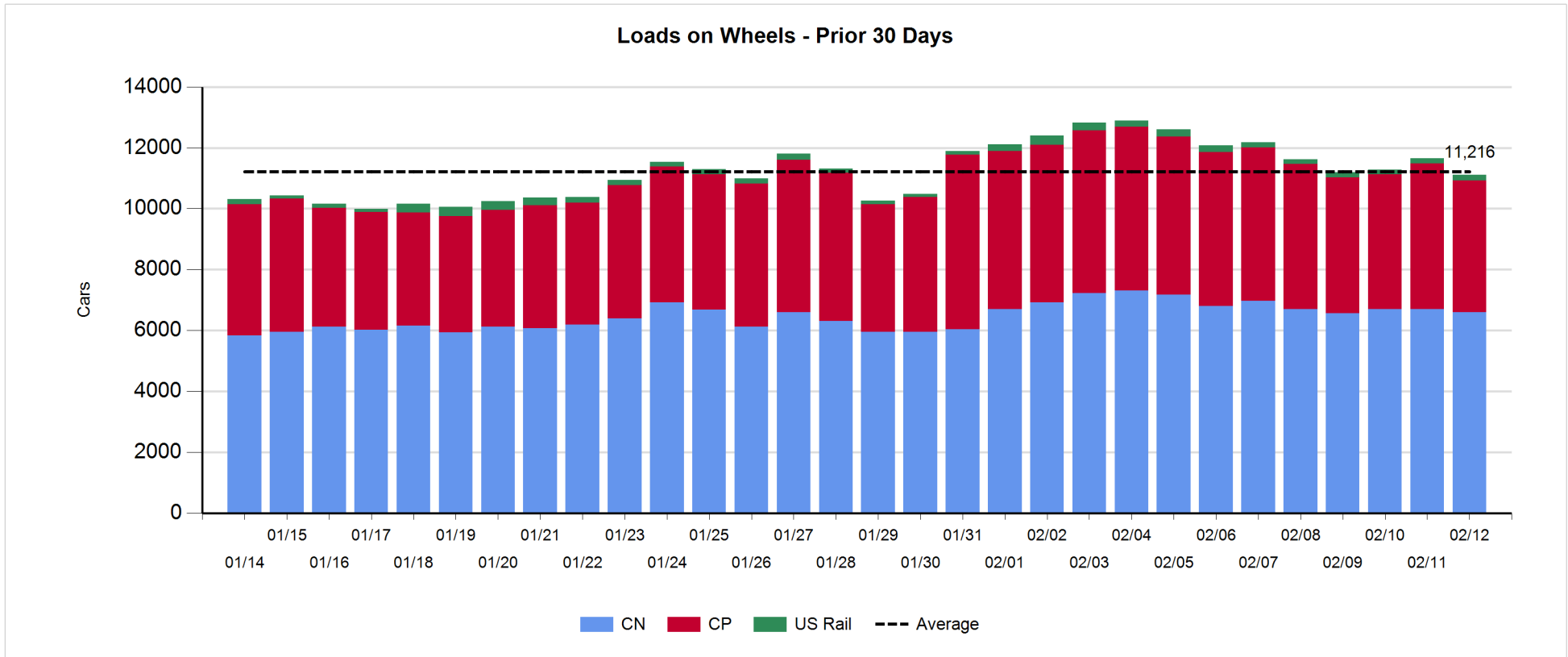
- CN and CP reported a total of 815 cars unloaded at the three major ports, 4% above the trailing 30-day average. Three days in Week 28 unloads now ahead of last week's pace by 800 unloads, marking higher unloads at Vancouver offset by lower unloads at Prince Rupert and Thunder Bay.
- Vancouver
  - 764 unloads reported by CN and CP at the Port of Vancouver; CN - 426 and CP - 338. Three days in Week 28 unloads are tracking ahead of last week's performance by more than 1,500 unloads.
  - To put this in context through the first three days last week unloads totaled less than 700 due to the service disruption on CN's main line west of Kamloops. Current unload rates reflect a return to normal activity levels.
  - There are 950 cars on site at Vancouver with 600 cars arriving at the port in the last 24 hours.
  - CN and CP have more than 1,500 cars in British Columbia en route to Vancouver, with 900 cars at Kamloops and west, and 50% of traffic moving on CN.
- Prince Rupert
  - Prince Rupert reported zero unloads, now behind last week's unloads after three days by more than 650 unloads.
  - Loads on wheels remain above 1,000 cars - now at 1,501 cars.
  - There are 350 cars west of Jasper en route to Prince Rupert.
  - There are 27 cars on site at Prince Rupert with zero cars arriving at the port in the last 24 hours.
- Thunder Bay
  - 51 unloads were reported at Thunder Bay yesterday. Three days in Week 28 unloads are tracking behind last week's pace by more than 100 unloads.
  - There are 9 cars on site at Thunder Bay with zero cars arriving at the port in the prior 24 hours.
  - There are zero cars en route to Thunder Bay from Winnipeg and east.

**Daily Loads on Wheels - 2/12/2020**

	E Canada	Prince Rupert	Thunder Bay	USA/MEX	Vancouver	Total
CN	1,029	1,501	142	180	3,742	6,594
CP	245			306	3,776	4,327
Short Line	43				25	68
US Rail				118		118
	1,317	1,501	142	604	7,543	11,107

**Change in Loads on Wheels - Prior 24 Hours**

	E Canada	Prince Rupert	Thunder Bay	USA/MEX	Vancouver	Total
CN	-64	0	126	-5	-157	-100
CP	-91		-44	-17	-304	-456
Short Line	12				7	19
US Rail				-11		-11
	-143	0	82	-33	-454	-548

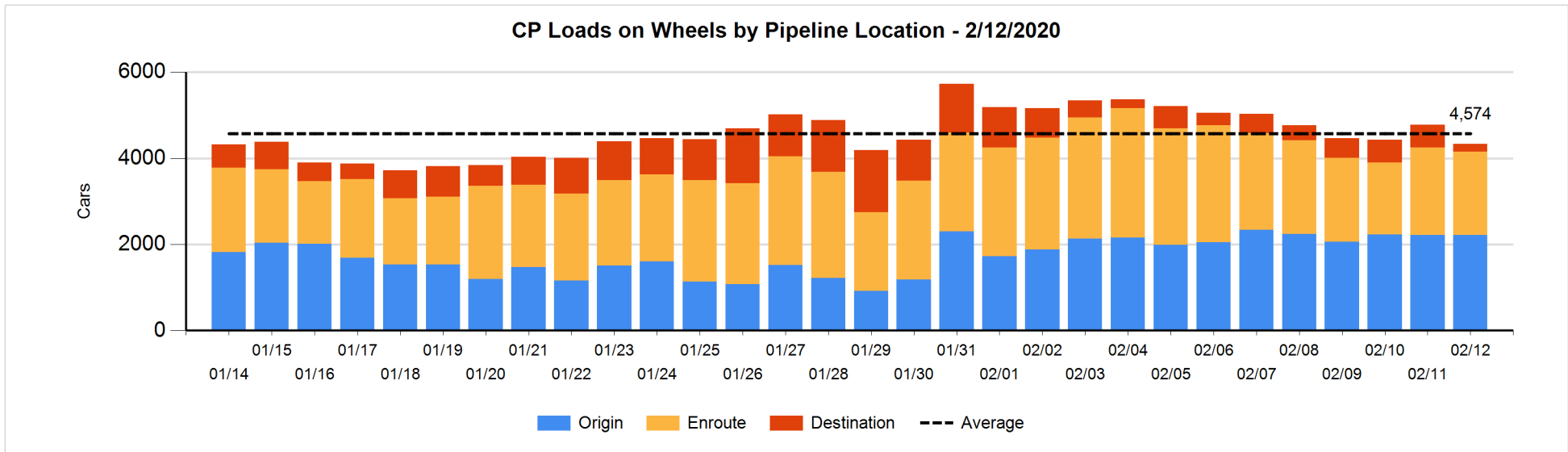
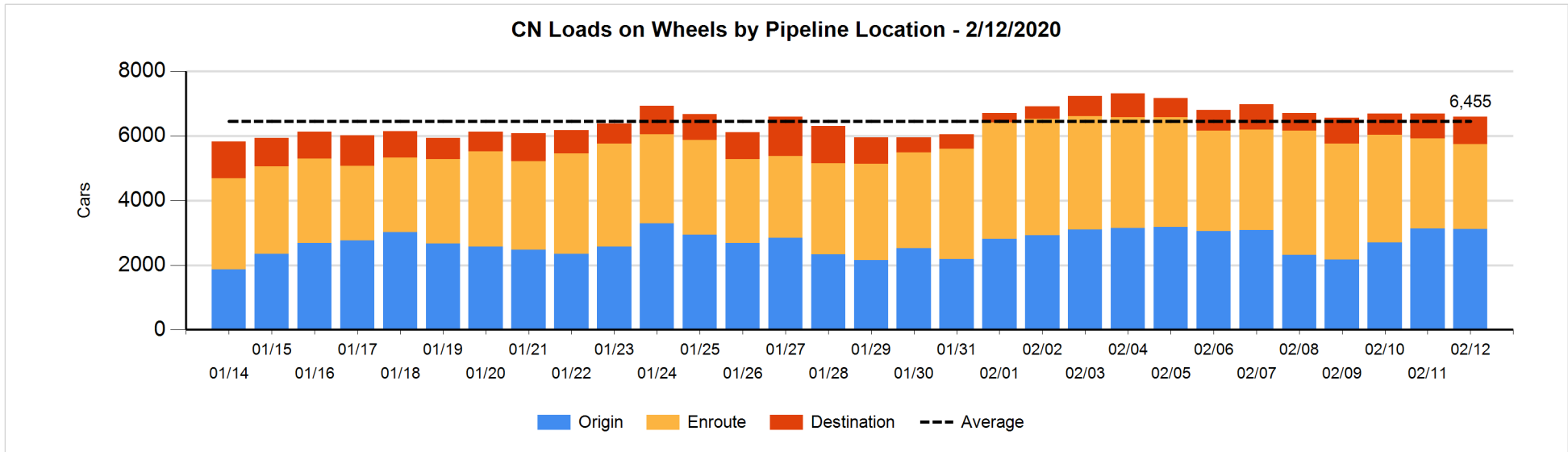


**Daily Loads on Wheels By Pipeline Location - 2/12/2020**

	E Canada	Prince Rupert	Thunder Bay	USA/MEX	Vancouver	Total
CN						
Origin	428	852	133	49	1,650	3,112
Enroute	597	622		82	1,329	2,630
Destination	4	27	9	49	763	852
	1,029	1,501	142	180	3,742	6,594
CP						
Origin	57			170	1,995	2,222
Enroute	188			118	1,620	1,926
Destination				18	161	179
	245			306	3,776	4,327
US Rail / Short Line						
Origin						
Enroute	14			78		92
Destination	29			40	25	94
	43			118	25	186

**Change in Daily Loads on Wheels By Pipeline Location - Prior 24 Hours**

	E Canada	Prince Rupert	Thunder Bay	USA/MEX	Vancouver	Total
CN						
Origin	1	-105	133	7	-57	-21
Enroute	-13	106		-1	-245	-153
Destination	-52	-1	-7	-11	145	74
	-64	0	126	-5	-157	-100
CP						
Origin	-2			-17	22	3
Enroute	-89			-10	-4	-103
Destination			-44	10	-322	-356
	-91		-44	-17	-304	-456
US Rail / Short Line						
Origin						
Enroute	14			-16		-2
Destination	-2			5	7	10
	12			-11	7	8

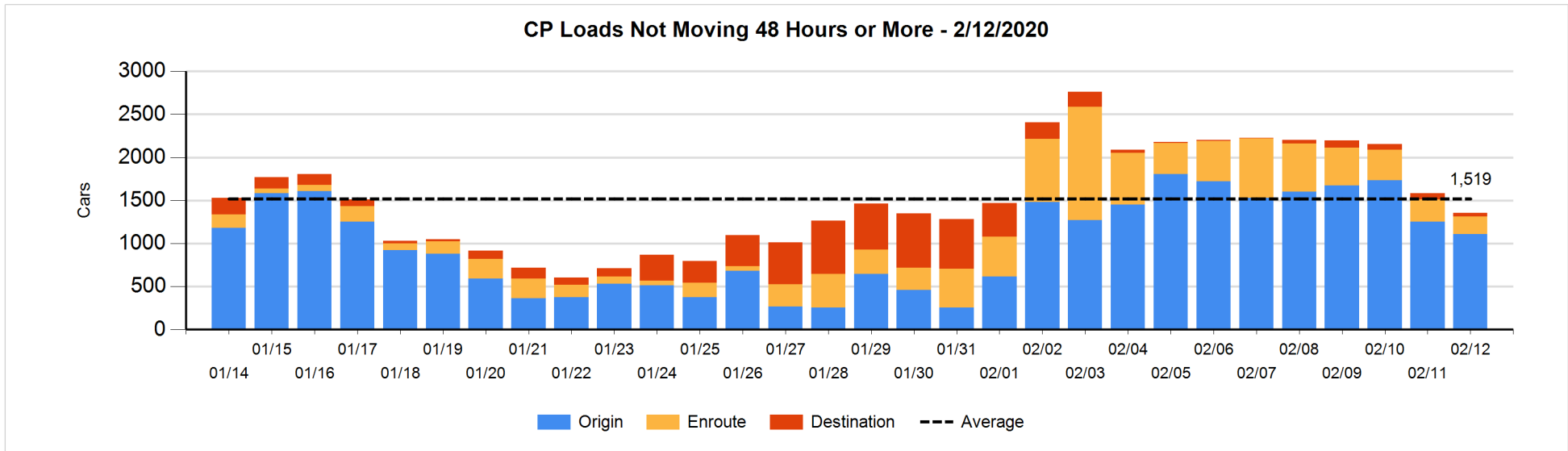
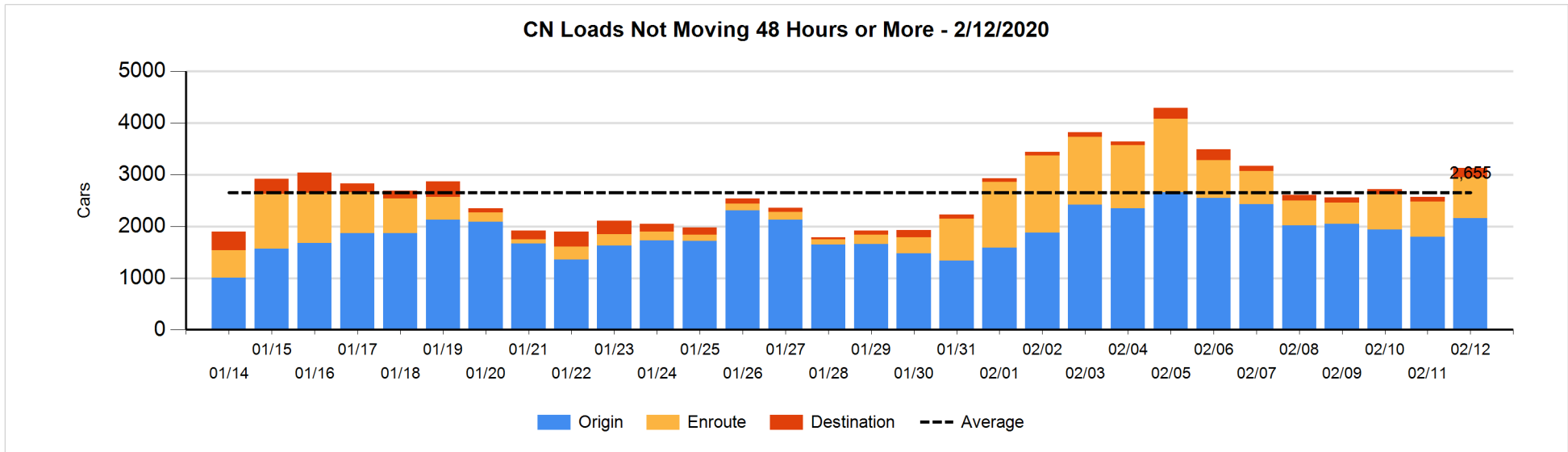


**Loads Not Moving 48 Hours or More - 2/12/2020**

	E Canada	Prince Rupert	Thunder Bay	USA/MEX	Vancouver	Total
CN						
Origin	247	533		36	1340	2156
Enroute	249	400		7	139	795
Destination	2	10	8	19	142	181
	498	943	8	62	1621	3132
CP						
Origin	30			170	908	1108
Enroute	15			4	183	202
Destination					44	44
	45			174	1135	1354
US Rail / Short Line						
Origin						
Enroute				37		37
Destination	17			1	5	23
	17			38	5	60

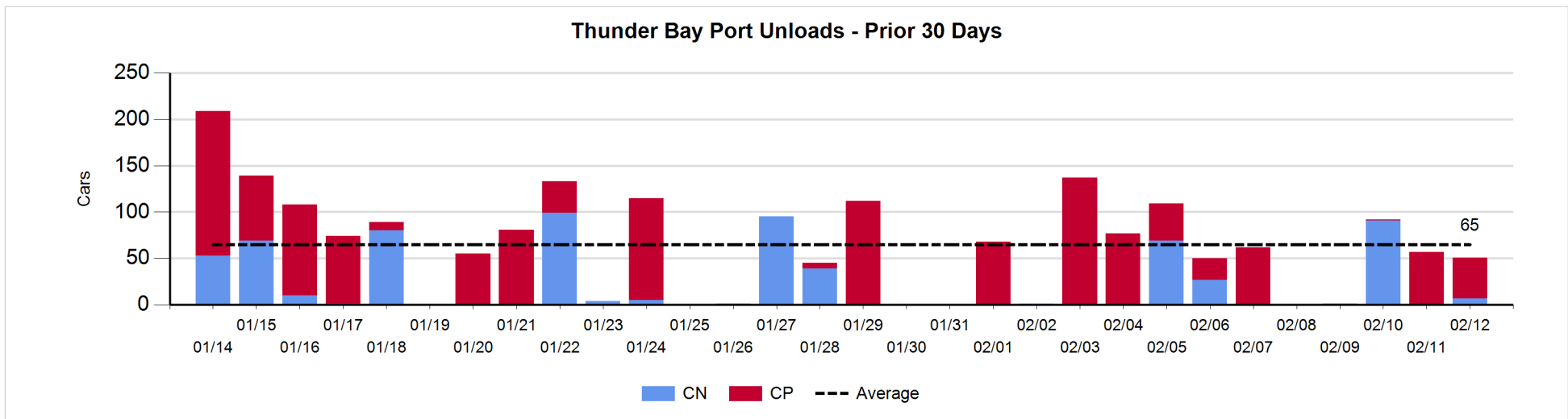
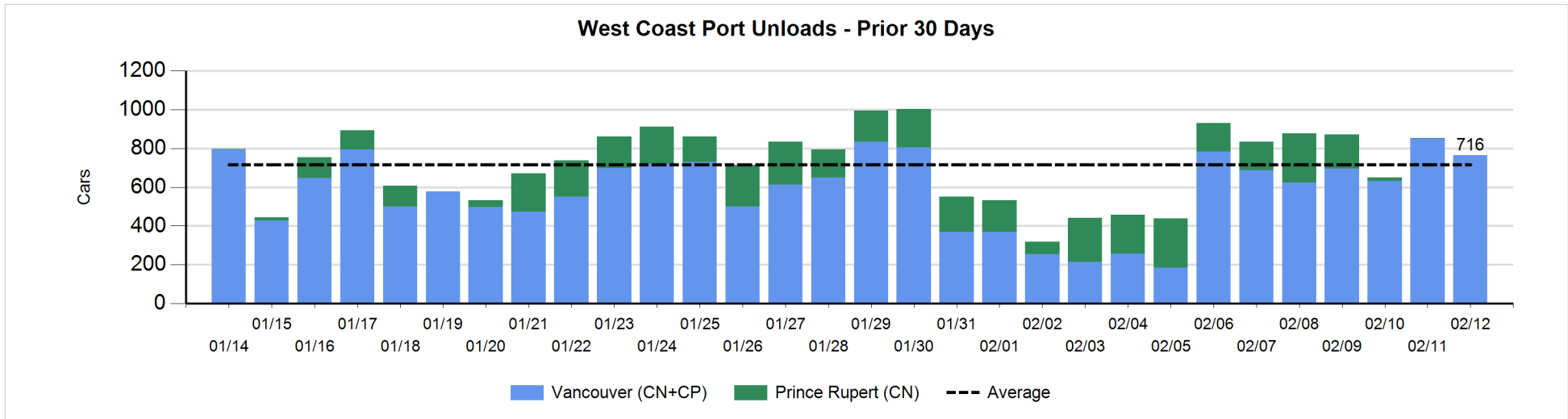
**Change in Loads Not Moving 48 Hours or More - 2/12/2020**

	E Canada	Prince Rupert	Thunder Bay	USA/MEX	Vancouver	Total
CN						
Origin	247	101		3	11	362
Enroute	42	108		6	-46	110
Destination	-2	0	-7	-20	120	91
	287	209	-7	-11	85	563
CP						
Origin	22			68	-233	-143
Enroute	-53			-1	-6	-60
Destination					-27	-27
	-31			67	-266	-230
US Rail / Short Line						
Origin						
Enroute				0		0
Destination	12			-1	1	12
	12			-1	1	12



**Port Unloads - 2/12/2020**

	Prince Rupert	Vancouver	West Coast Total	Thunder Bay	Total
CN		426	426	7	433
CP		338	338	44	382
		764	764	51	815





**Port Terminal Status**

**Vancouver**

Daily Activity for 2/12/2020

	Cars Arrived	Cars Received in Interchange	Cars Delivered in Interchange	Cars Placed for Unloading	Loads on Wheels at Destination As of 2/12/2020
CN	305	115	7	524	763
CP	289		115	191	162
SRY		7		4	25

**Port Unloads**

	02/12	02/11	Week To Date	Last Week
CN	426	489	1,180	1,547
CP	338	363	1,067	1,896
SRY	1	3	7	36

**Age Profile of Loaded Cars Waiting Placement for Unloading**

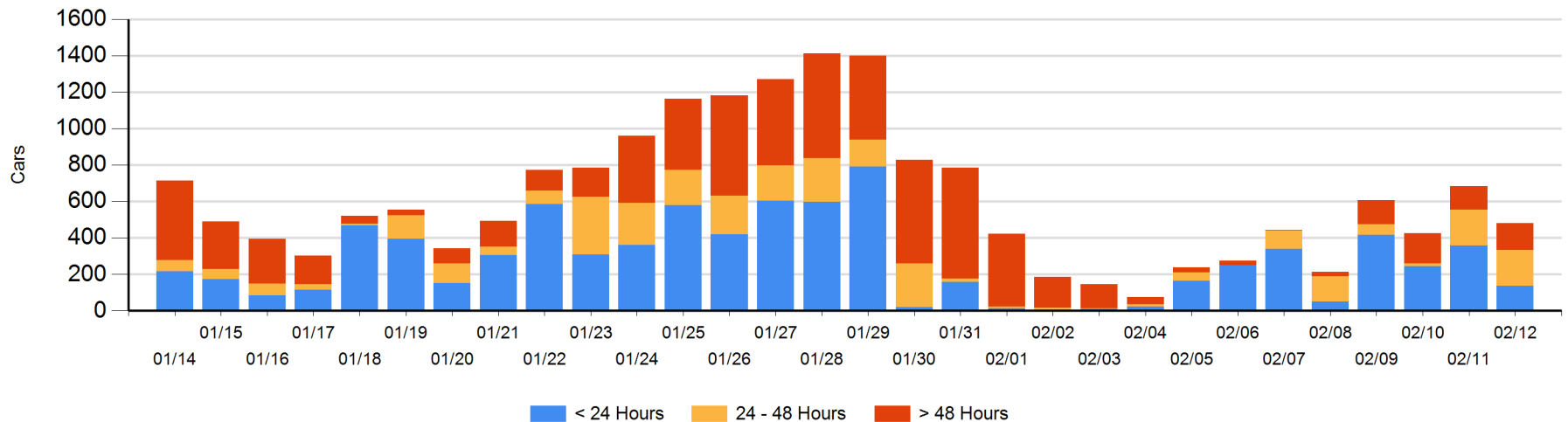
**Today**

	< 24 Hrs	24 - 48 Hrs	> 48-72 Hrs	> 72 Hrs	Total On Hand
CN	92	105	22	26	245
CP	45	91	19	80	235
SRY					0

**Change in Last 24 Hours**

	< 24 Hrs	24-48 Hrs	48 - 72 Hrs	> 72 Hrs
CN	-193	65	17	5
CP	-27	-66	7	-13
SRY				

**Loaded Cars on Hand Vancouver Waiting for Placement - Last 30 Days All Railways**



**Port Terminal Status**

**Prince Rupert**

Daily Activity for 2/12/2020

Cars Arrived	Cars Received in Interchange	Cars Delivered in Interchange	Cars Placed for Unloading	Loads on Wheels at Destination As of 2/12/2020
				27

**Port Unloads**

	02/12	02/11	Week To Date	Last Week
CN		1	19	1,407

**Age Profile of Loaded Cars Waiting Placement for Unloading**

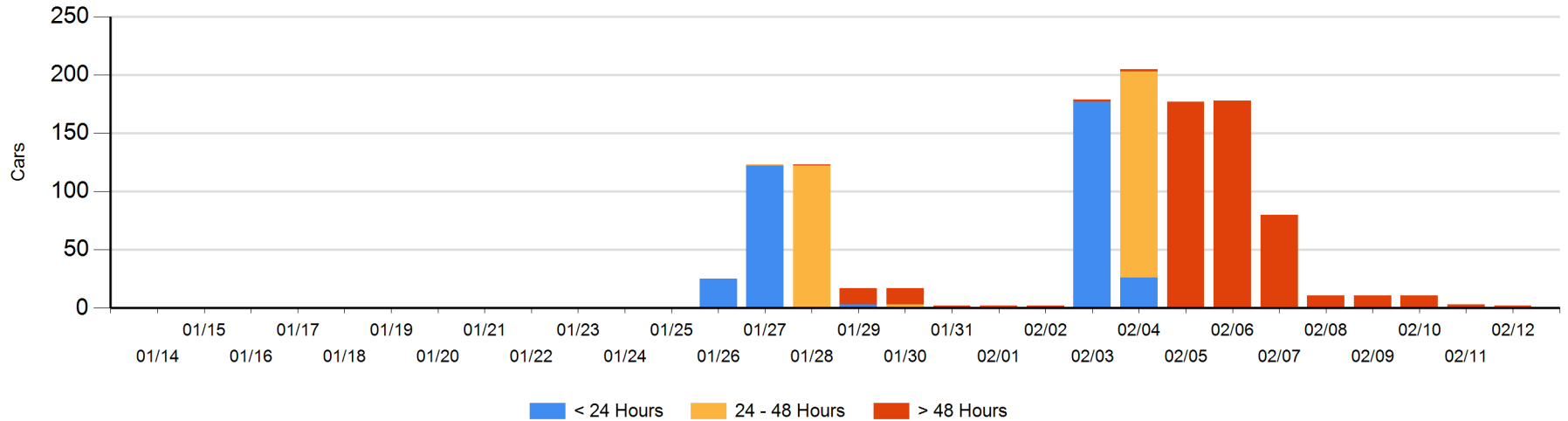
**Today**

	< 24 Hrs	24 - 48 Hrs	> 48-72 Hrs	> 72 Hrs	Total On Hand
CN		1		1	2

**Change in Last 24 Hours**

	< 24 Hrs	24-48 Hrs	48 - 72 Hrs	> 72 Hrs
CN	-1	1		-1

Loaded Cars on Hand Prince Rupert Waiting for Placement - Last 30 Days All Railways



**Port Terminal Status**

**Thunder Bay**

Daily Activity for 2/12/2020

	Cars Arrived	Cars Received in Interchange	Cars Delivered in Interchange	Cars Placed for Unloading	Loads on Wheels at Destination As of 2/12/2020
CN				1	9
CP				44	

**Port Unloads**

	02/12	02/11	Week To Date	Last Week
CN	7		98	96
CP	44	57	102	340

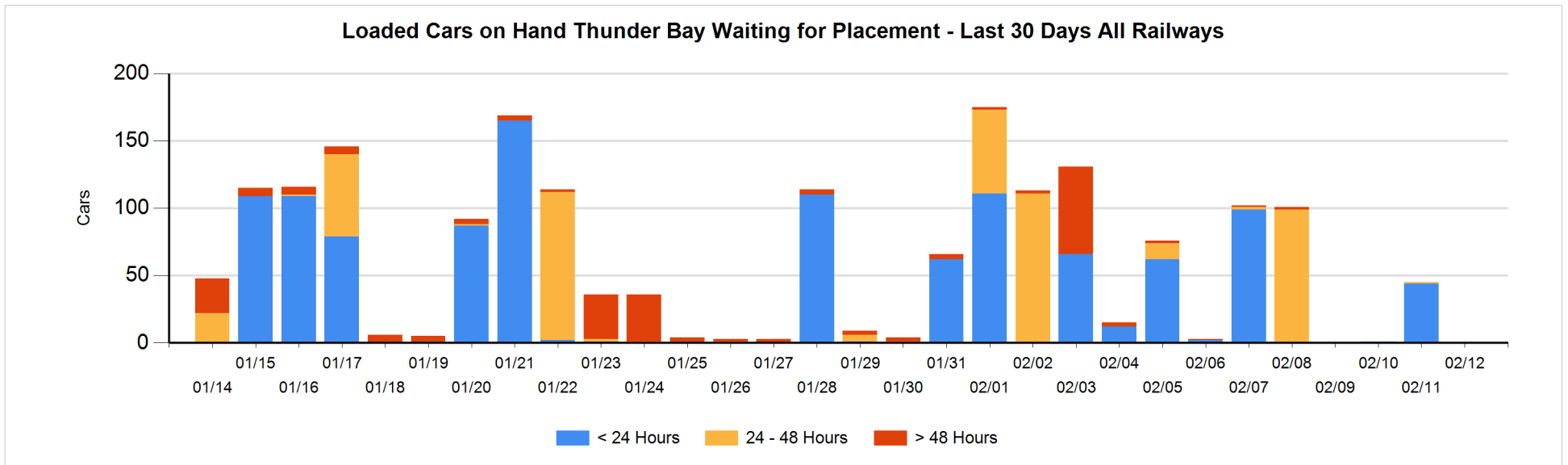
**Age Profile of Loaded Cars Waiting Placement for Unloading**

**Today**

	< 24 Hrs	24 - 48 Hrs	> 48-72 Hrs	> 72 Hrs	Total On Hand
CN					0
CP					0

**Change in Last 24 Hours**

	< 24 Hrs	24-48 Hrs	48 - 72 Hrs	> 72 Hrs
CN		-1		
CP	-44			



## Measurement Definitions

Loads on Wheels	<p>Count of loaded rail cars including all rail cars that have been released loaded at origin and have not been reported by the railway as unloaded at destination.</p> <p>Counts include all rail cars (hopper cars and boxcars) moving within a pipeline.</p>
Loads Not Moving	<p>Loaded rail cars for which the railways have not reported a movement event for 48 hours or more whether the rail car is at origin, enroute or at destination.</p>
Port Unloads	<p>Count of rail cars reported by railways as unloaded at the western port destinations of Vancouver, Prince Rupert and Thunder Bay.</p> <p>Unload counts include all rail cars (hopper cars and boxcars) unloaded by all receivers including major port terminals, transloaders and other receivers.</p>
Cars Arrived	<p>Count of rail cars reported as arrived at the destination railway terminal.</p>
Cars Received in Interchange	<p>Count of rail cars received in interchange by each railway within a destination railway terminal. Interchange activity is tracked for the Vancouver and Thunder Bay pipelines as applicable.</p>
Cars Delivered in Interchange	<p>Count of rail cars delivered in interchange by each railway within a destination railway terminal. Interchange activity is tracked for the Vancouver and Thunder Bay pipelines as applicable.</p>
Cars Placed for Unloading	<p>Count of rail cars reported by the railways as placed loaded at the receiver's facility for unloading.</p>
Loads on Wheels at Destination	<p>Count of rail cars that remain under load within the destination railway terminal including rail cars that have been reported as placed for unloading but not yet reported as unloaded.</p>
Waiting Placement for Unloading	<p>Count of rail cars that have been reported as arrived at the destination railway terminal but not reported as placed for unloading by the railway.</p> <p>For the Ports of Vancouver, Prince Rupert and Thunder Bay the count of rail cars waiting placement for unloading is categorized by age – i.e. the elapsed time from arrival at destination to the current report date.</p>